

# OECD How's Life? Well-being Database

## Definitions and Metadata



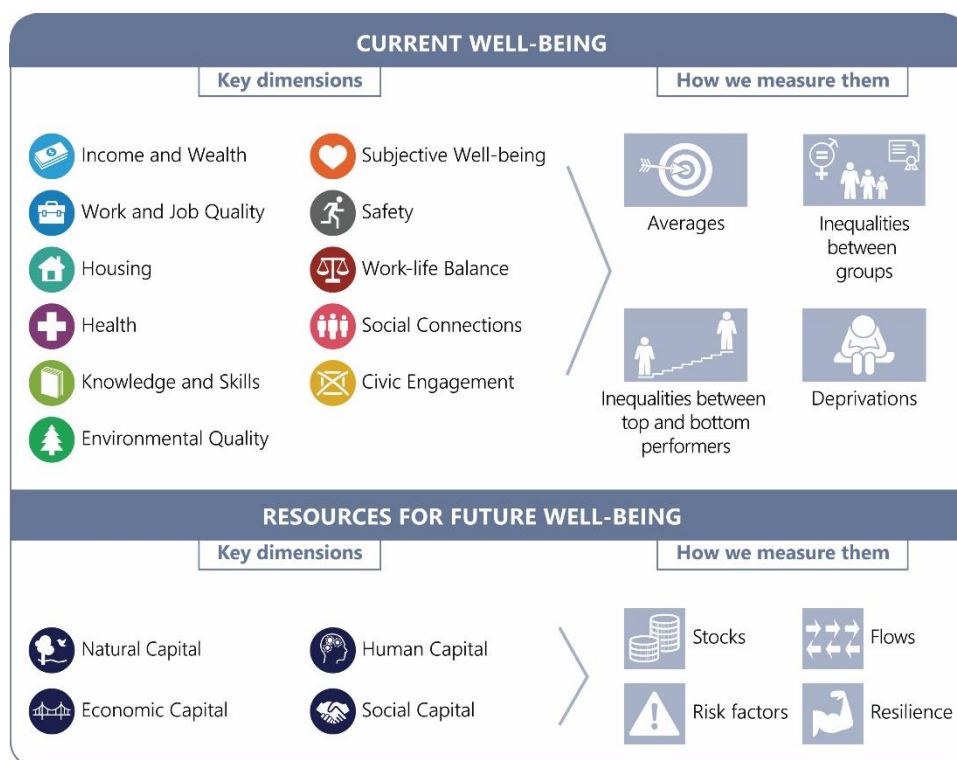
Latest updated: October 2025

### The OECD How's Life? Well-being Database

The How's Life? Well-being Database is the one-stop shop for the 80+ indicators of the OECD Well-being Dashboard (Figure 1), providing information on current well-being outcomes, well-being inequalities and the resources and risks that underpin future well-being. The **11 dimensions of current well-being** relate to material conditions that shape people's economic options (Income and Wealth, Housing, Work and Job Quality) and quality-of-life factors that encompass how well people are (and how well they feel they are), what they know and can do, and how healthy and safe their places of living are (Health, Knowledge and Skills, Environmental Quality, Subjective Well-being, Safety). Quality of life also encompasses how connected and engaged people are, and how and with whom they spend their time (Work-Life Balance, Social Connections, Civic Engagement). **The distribution of current well-being is taken into account by looking at three types of inequality:** gaps between population groups (horizontal inequalities); gaps between those at the top and those at the bottom of the achievement scale in each dimension (vertical inequalities); and deprivations (i.e. the percentage of the population falling below a given threshold). The **four systemic resources that underpin future well-being** over time are expressed in terms of different types of capital: Economic, Natural, Human and Social.

To access the How's Life? Well-being Database, please visit the OECD Data Explorer portal: <https://bit.ly/4aVcXn3>.

Figure 1. The OECD Well-being Framework



Source: OECD (2020), How's Life? 2020: Measuring Well-being, OECD Publishing, Paris, <https://doi.org/10.1787/9870c393-en>.

### ***Breakdowns considered in the OECD How's Life? Well-being Database***

Depending on the specific indicator and data availability, up to four ways of looking at an indicator are considered:

- **Country average.**
- **Deprivation:** Focus on the lower end of the distribution of outcomes, typically by measuring the percentage of the population falling below a given threshold of achievement.
- **Vertical inequality:** Focus on the dispersion of outcomes among individuals within a society, typically by measuring the gap between the bottom 20% (i.e. the quintile with the lowest values of a given indicator) and top 20% (i.e. the quintile with the highest values of a given indicator).
- **Horizontal inequality:** Focus on differences among groups that share some common traits, typically by measuring gaps by sex (female and male), age (young, middle-aged, and old), and educational attainment ("primary" which refers to below upper secondary education, "secondary" which refers to upper secondary education, and "tertiary" which refers to tertiary education):
  - Age ranges differ according to each indicator and are only broadly comparable. Age groups generally refer to 15-24/29 years for young people, 25/30 to 45/54 years for the middle-aged and 50 years and over for older people. Exact age groups for each indicator are specified throughout this document.
  - Educational attainment refers to the highest level of education completed. In most cases, this corresponds to ISCED levels 0-2 for "below upper secondary" (i.e. less than primary, primary and lower secondary education); 3-4 for "upper secondary" (i.e. secondary and post-secondary non-tertiary education); and 5-8 for "tertiary" education. For individual country level mappings to the ISCED 2011 classifications, please see <http://uis.unesco.org/en/isced-mappings>.
- The systemic resources that underpin future well-being over time include measures of **stocks, flows, risk factors** and **resilience factors**.

## Metadata and definitions

### 1. Income and Wealth

Income and wealth shape households' consumption possibilities. Income after taxes and transfers indicates what households have available to spend, while direct measures of household consumption expenditure inform about "realised" material conditions (rather than possibilities). Wealth meanwhile provides a buffer that can help to smooth consumption and enable longer-term investments (such as in housing).

#### 1.1 Household income

**Indicator and unit of measurement:** Household net adjusted disposable income, measured in USD at 2022 PPPs per capita

**Type of indicator:** Country average

**Definition:** Household net adjusted disposable income is obtained by summing all the (gross) income flows (earnings, self-employment and capital income, current transfers received from other sectors) paid to the (SNA) household sector and then subtracting current transfers (such as taxes on income and wealth) paid by households to other sectors of the economy. The term "adjusted", in National Accounts vocabulary, denotes the inclusion of the social transfers in-kind (such as education and health care services) that households receive from government. The measure used here also takes into account the amount needed to replace the capital assets of households (i.e. dwellings and equipment of unincorporated enterprises), which is deducted from their income.

**Source:** OECD calculations based on the *OECD National accounts*'

*Annual non-financial accounts by institutional sector (Expenditure) (database)*, [https://data-explorer.oecd.org/vis?pg=0&bp=true&snb=33&tm=Annual%20non-financial%20accounts%20by%20institutional%20sector%20%28Expenditure%29&df\[ds\]=dsDisseminateFinalDMZ&df\[id\]=DSD\\_NASEC10%40DF\\_TABLE14\\_EXP&df\[ag\]=OECD.SDD.NAD&df\[vs\]=1.1&pd=2010%2C&dq=A..S1M...P51CB%2BB7G\\_Z....V...&ly\[cl\]=TIME\\_PERIOD&to\[TIME\\_PERIOD\]=false&lb=bt](https://data-explorer.oecd.org/vis?pg=0&bp=true&snb=33&tm=Annual%20non-financial%20accounts%20by%20institutional%20sector%20%28Expenditure%29&df[ds]=dsDisseminateFinalDMZ&df[id]=DSD_NASEC10%40DF_TABLE14_EXP&df[ag]=OECD.SDD.NAD&df[vs]=1.1&pd=2010%2C&dq=A..S1M...P51CB%2BB7G_Z....V...&ly[cl]=TIME_PERIOD&to[TIME_PERIOD]=false&lb=bt)

*Annual GDP and components - expenditure approach (database)*, [https://data-explorer.oecd.org/vis?fs\[0\]=Topic%2C1%7CEconomy%23ECO%23%7CNational%20accounts%23ECO\\_NAD%23&pg=0&fc=Topic&bp=true&snb=138&df\[ds\]=dsDisseminateFinalDMZ&df\[id\]=DSD\\_NAMAIN10%40DF\\_TABLE1\\_EXPENDITURE&df\[ag\]=OECD.SDD.NAD&df\[vs\]=1.0&pd=2010%2C&dq=A....P41.....DR..&ly\[cl\]=TIME\\_PERIOD&ly\[rs\]=REF\\_AREA&to\[TIME\\_PERIOD\]=false](https://data-explorer.oecd.org/vis?fs[0]=Topic%2C1%7CEconomy%23ECO%23%7CNational%20accounts%23ECO_NAD%23&pg=0&fc=Topic&bp=true&snb=138&df[ds]=dsDisseminateFinalDMZ&df[id]=DSD_NAMAIN10%40DF_TABLE1_EXPENDITURE&df[ag]=OECD.SDD.NAD&df[vs]=1.0&pd=2010%2C&dq=A....P41.....DR..&ly[cl]=TIME_PERIOD&ly[rs]=REF_AREA&to[TIME_PERIOD]=false),

*Annual Purchasing Power Parities and exchange rates (database)*, [https://data-explorer.oecd.org/vis?pg=0&bp=true&snb=9&tm=Annual%20Purchasing%20Power%20Parities%20and%20exchange%20rates&df\[ds\]=dsDisseminateFinalDMZ&df\[id\]=DSD\\_NAMAIN10%40DF\\_TABLE4&df\[ag\]=OECD.SDD.NAD&df\[vs\]=1.0&pd=2010%2C&dq=A.AUS%2BAUT%2BBEL%2BCAN%2BCHL%2BCOL%2BCRI%2BCZE%2BDNK%2BEST%2BFIN%2BFRA%2BDEU%2BGRC%2BHUN%2BISL%2BIRL%2BISR%2BITA%2BJPN%2BKOR%2BLVA%2BLTU%2BLUX%2BMEX%2BNLD%2BNZL%2BNOR%2BPOL%2BPRT%2BSVK%2BSVN%2BESP%2BSWE%2BCHL%2BTUR%2BGBR...PPP\\_P41.....&ly\[rw\]=REF\\_AREA&ly\[cl\]=TIME\\_PERIOD&to\[TIME\\_PERIOD\]=false](https://data-explorer.oecd.org/vis?pg=0&bp=true&snb=9&tm=Annual%20Purchasing%20Power%20Parities%20and%20exchange%20rates&df[ds]=dsDisseminateFinalDMZ&df[id]=DSD_NAMAIN10%40DF_TABLE4&df[ag]=OECD.SDD.NAD&df[vs]=1.0&pd=2010%2C&dq=A.AUS%2BAUT%2BBEL%2BCAN%2BCHL%2BCOL%2BCRI%2BCZE%2BDNK%2BEST%2BFIN%2BFRA%2BDEU%2BGRC%2BHUN%2BISL%2BIRL%2BISR%2BITA%2BJPN%2BKOR%2BLVA%2BLTU%2BLUX%2BMEX%2BNLD%2BNZL%2BNOR%2BPOL%2BPRT%2BSVK%2BSVN%2BESP%2BSWE%2BCHL%2BTUR%2BGBR...PPP_P41.....&ly[rw]=REF_AREA&ly[cl]=TIME_PERIOD&to[TIME_PERIOD]=false) and

*Annual population and employment, national concept (database)*, [https://data-explorer.oecd.org/vis?tm=population&pg=0&snb=188&df\[ds\]=dsDisseminateFinalDMZ&df\[id\]=DSD\\_NAMAIN10%40DF\\_TABLE3\\_POP\\_EMPNC&df\[ag\]=OECD.SDD.NAD&df\[vs\]=1.0&pd=2010%2C&dq=A.AUS%2BAUT%2BBEL%2BCAN%2BCHL%2BCOL%2BCRI%2BCZE%2BDNK%2BEST%2BFIN%2BFRA%2BDEU%2BGRC%2BHUN%2BISL%2BIRL%2BISR%2BITA%2BJPN%2BKOR%2BLVA%2BLTU%2BLUX%2BMEX%2BNLD%2BNZL%2BNOR%2BP](https://data-explorer.oecd.org/vis?tm=population&pg=0&snb=188&df[ds]=dsDisseminateFinalDMZ&df[id]=DSD_NAMAIN10%40DF_TABLE3_POP_EMPNC&df[ag]=OECD.SDD.NAD&df[vs]=1.0&pd=2010%2C&dq=A.AUS%2BAUT%2BBEL%2BCAN%2BCHL%2BCOL%2BCRI%2BCZE%2BDNK%2BEST%2BFIN%2BFRA%2BDEU%2BGRC%2BHUN%2BISL%2BIRL%2BISR%2BITA%2BJPN%2BKOR%2BLVA%2BLTU%2BLUX%2BMEX%2BNLD%2BNZL%2BNOR%2BP)

[OL%2BPRT%2BSVK%2BSVN%2BESP%2BSWE%2BCHE%2BTUR%2BGBR%2BUSA...POP.....&ly\[rw\]=REF\\_AR  
EA&ly\[cl\]=TIME\\_PERIOD&to\[TIME\\_PERIOD\]=false.](https://data-explorer.oecd.org/vis?fs[0]=Topic%2C1%7CSociety%23SOC%23%7CInequality%23SOC_INE%23&pg=0&fc=Topic&bp=true&snb=2&vw=tb&dfds]=dsDisseminateFinalDMZ&dfid]=DSD_WISE_IDD%40DF_IDD&dfag]=OECD.WISE_INE&dfvs]=1.0&pd=2010%2C&dq=.A.QR_INC_DISP...T.METH2012.D_CUR.&ly[rw]=REF_AREA%2CUNIT_MEASURE&ly[cl]=TIME_PERIOD&to[TIME_PERIOD]=false)

### 1.2 S80/S20 income share ratio

**Indicator and unit of measurement:** Ratio of average (equivalised) household disposable income of the top 20% to the average income of the bottom 20% of the income distribution (S80/S20 income share ratio)

**Type of indicator:** Vertical inequality

**Definition:** This indicator is based on the concept of household disposable income, as measured in microdata – i.e. the market income received by all household members (gross earnings, self-employment income, capital income), plus current cash transfers received, net of income and wealth taxes and social security contributions paid by workers, and net of current transfers paid to other households. Household disposable income is “adjusted” by an equivalence scale that divides household income by the square root of household size, to account for economies of scale in household needs (i.e. the notion that any additional household member needs less than a proportionate increase of household income in order to maintain a given level of welfare). Data are drawn from the OECD Income Distribution Database, which relies on estimates supplied by National Statistical Offices and other producers of official statistics (based on household surveys or tax and administrative records), or produced by the OECD based on public use data from the European Union Statistics on Income and Living Conditions (EU-SILC). The data comply as much as possible with the 2011 Canberra Handbook. Negative household income values are set to zero, through special treatments as described in the Terms of Reference of the OECD Income Distribution Database. Survey data can suffer from under-coverage and underreporting at both ends of the distribution.

**Source:** OECD Income Distribution Database, [https://data-explorer.oecd.org/vis?fs\[0\]=Topic%2C1%7CSociety%23SOC%23%7CInequality%23SOC\\_INE%23&pg=0&fc=Topic&bp=true&snb=2&vw=tb&dfds\]=dsDisseminateFinalDMZ&dfid\]=DSD\\_WISE\\_IDD%40DF\\_IDD&dfag\]=OECD.WISE\\_INE&dfvs\]=1.0&pd=2010%2C&dq=.A.QR\\_INC\\_DISP...T.METH2012.D\\_CUR.&ly\[rw\]=REF\\_AREA%2CUNIT\\_MEASURE&ly\[cl\]=TIME\\_PERIOD&to\[TIME\\_PERIOD\]=false.](https://data-explorer.oecd.org/vis?fs[0]=Topic%2C1%7CSociety%23SOC%23%7CInequality%23SOC_INE%23&pg=0&fc=Topic&bp=true&snb=2&vw=tb&dfds]=dsDisseminateFinalDMZ&dfid]=DSD_WISE_IDD%40DF_IDD&dfag]=OECD.WISE_INE&dfvs]=1.0&pd=2010%2C&dq=.A.QR_INC_DISP...T.METH2012.D_CUR.&ly[rw]=REF_AREA%2CUNIT_MEASURE&ly[cl]=TIME_PERIOD&to[TIME_PERIOD]=false)

### 1.3 Household net wealth

**Indicator and unit of measurement:** Household median net wealth, USD at 2022 PPPs

**Type of indicator:** Country average and vertical inequality

**Definition:** Household wealth refers to the sum of non-financial (e.g. dwellings) and financial assets (e.g. deposits, shares and equity), net of their financial liabilities (e.g. loans), held by private households resident in the country, as measured in microdata (household surveys and, more rarely, administrative records). Household wealth is reported for the median household (rather than as the mean across all households) to reduce the impact of differences across countries in measuring the top end of the distribution (where most wealth is concentrated). Values are expressed in USD using purchasing power parities (PPPs) for household private consumption; when analysing changes over time, these values are adjusted for changes in the consumer price index (CPI). The concept of household wealth used corresponds to the one presented in the OECD Guidelines for Micro Statistics on Household Wealth and excludes private and occupational pensions, whose size and distribution differ markedly across countries depending on the characteristics of their social security systems. Data are shown per household (rather than per person or per adult), with no adjustment made to reflect differences in household size. They are drawn from the OECD Wealth Distribution Database, which includes estimates that are supplied by National Statistical Offices and other producers of official statistics, or that are produced by the OECD based on public use data from the Euro-System Household Finance and Consumption Survey (for 17 European countries except the Netherlands). Differences in the extent to which rich

households are oversampled in different countries (ranging from no oversampling in Australia and Austria, to large oversampling for the United States and Spain) affect cross-country differences in average wealth per household (and their inequality).

**Vertical inequality** in household wealth is measured by the percentage of household wealth held by the 10% of wealthiest households.

**Source:** OECD Wealth Distribution Database, [https://data-explorer.oecd.org/vis?fs\[0\]=Topic%2C1%7CSociety%23SOC%23%7CInequality%23SOC\\_INE%23&pg=0&fc=Topic&bp=true&snb=2&df\[ds\]=dsDisseminateFinalDMZ&df\[id\]=DSD\\_WEALTH%40DF\\_WEALTH&df\[ag\]=OECD.WISE.INE&df\[vs\]=1.0&lo=5&lom=LASTNPERIODS&dq=.A.SH.TOP10+NW...&to\[TIME\\_PERIOD\]=false,](https://data-explorer.oecd.org/vis?fs[0]=Topic%2C1%7CSociety%23SOC%23%7CInequality%23SOC_INE%23&pg=0&fc=Topic&bp=true&snb=2&df[ds]=dsDisseminateFinalDMZ&df[id]=DSD_WEALTH%40DF_WEALTH&df[ag]=OECD.WISE.INE&df[vs]=1.0&lo=5&lom=LASTNPERIODS&dq=.A.SH.TOP10+NW...&to[TIME_PERIOD]=false,)

OECD Annual Purchasing Power Parities and exchange rates (database), [https://data-explorer.oecd.org/vis?tm=DSD\\_NAMAIN10%40DF\\_TABLE4&pg=0&snb=33&df\[ds\]=dsDisseminateFinalDMZ&df\[id\]=DSD\\_NAMAIN10%40DF\\_TABLE4&df\[ag\]=OECD.SDD.NAD&df\[vs\]=2.0&dq=A.AUS%2BAUT%2BBEL%2BCAN%2BCHL%2BCOL%2BCRI%2BCZE%2BDNK%2BEST%2BFIN%2BFRA%2BDEU%2BGRC%2BHUN%2BISL%2BIRL%2BISR%2BITA%2BJPN%2BKOR%2BLVA%2BLTU%2BLUX%2BMEX%2BNLD%2BNZL%2BNOR%2BPOL%2BPORT%2BSVK%2BSVN%2BESP%2BSWE%2BCHE%2BTUR%2BGBR%2BUSA...PPP.P31S14.....&lom=LASTNPERIODS&lo=10&to\[TIME\\_PERIOD\]=false&lb=id](https://data-explorer.oecd.org/vis?tm=DSD_NAMAIN10%40DF_TABLE4&pg=0&snb=33&df[ds]=dsDisseminateFinalDMZ&df[id]=DSD_NAMAIN10%40DF_TABLE4&df[ag]=OECD.SDD.NAD&df[vs]=2.0&dq=A.AUS%2BAUT%2BBEL%2BCAN%2BCHL%2BCOL%2BCRI%2BCZE%2BDNK%2BEST%2BFIN%2BFRA%2BDEU%2BGRC%2BHUN%2BISL%2BIRL%2BISR%2BITA%2BJPN%2BKOR%2BLVA%2BLTU%2BLUX%2BMEX%2BNLD%2BNZL%2BNOR%2BPOL%2BPORT%2BSVK%2BSVN%2BESP%2BSWE%2BCHE%2BTUR%2BGBR%2BUSA...PPP.P31S14.....&lom=LASTNPERIODS&lo=10&to[TIME_PERIOD]=false&lb=id) and

OECD Consumer price indices (CPIs, HICPs), COICOP 1999 (database), [https://data-explorer.oecd.org/vis?tm=DSD\\_PRICES%40DF\\_PRICES\\_ALL&pg=0&snb=8&vw=tb&df\[ds\]=dsDisseminateFinalDMZ&df\[id\]=DSD\\_PRICES%40DF\\_PRICES\\_ALL&df\[ag\]=OECD.SDD.TPS&df\[vs\]=1.0&dq=.A.N.CPI.IX.T.N.&pd=2010%2C&to\[TIME\\_PERIOD\]=false&ly\[cl\]=TIME\\_PERIOD&ly\[rw\]=REF\\_AREA&lb=nm.](https://data-explorer.oecd.org/vis?tm=DSD_PRICES%40DF_PRICES_ALL&pg=0&snb=8&vw=tb&df[ds]=dsDisseminateFinalDMZ&df[id]=DSD_PRICES%40DF_PRICES_ALL&df[ag]=OECD.SDD.TPS&df[vs]=1.0&dq=.A.N.CPI.IX.T.N.&pd=2010%2C&to[TIME_PERIOD]=false&ly[cl]=TIME_PERIOD&ly[rw]=REF_AREA&lb=nm.)

#### 1.4 Relative income poverty

**Indicator and unit of measurement:** Percentage of individuals with household disposable income below the relative income poverty line, set at 50% of the national median income

**Type of indicator:** Deprivation

**Definition:** This indicator is based on the concept of household disposable income, as measured in microdata – i.e. the market income received by all household members (gross earnings, self-employment income, capital income), plus current cash transfers received, net of income and wealth taxes and social security contributions paid by workers, and net of current transfers paid to other households. Household disposable income is “adjusted” by an equivalence scale that divides household income by the square root of household size, to account for economies of scale in household needs (i.e. the notion that any additional household member needs less than a proportionate increase of household income in order to maintain a given level of welfare). Data are drawn from the OECD Income Distribution Database, which relies on estimates supplied by National Statistical Offices and other producers of official statistics (based on household surveys or tax and administrative records), or produced by the OECD based on public use data from the European Union Statistics on Income and Living Conditions (EU-SILC). The data comply as much as possible with the 2011 Canberra Handbook. Negative household income values are set to zero, through special treatments as described in the Terms of Reference of the OECD Income Distribution Database. Survey data can suffer from under-coverage and underreporting at both ends of the distribution.

**Source:** OECD Income Distribution Database, [https://data-explorer.oecd.org/vis?fs\[0\]=Topic%2C1%7CSociety%23SOC%23%7CInequality%23SOC\\_INE%23&pg=0&fc=Topic&bp=true&snb=2&vw=tb&df\[ds\]=dsDisseminateFinalDMZ&df\[id\]=DSD\\_WISE\\_IDD%40DF\\_IDD&df\[ag\]=OECD.WISE\\_INE&df\[vs\]=1.0&pd=2010%2C&dq=.A.QR\\_INC\\_DISP...T.METH2012.D.CUR.&ly\[rw\]=REF\\_AREA%2CUNIT\\_MEASURE&ly\[cl\]=TIME\\_PERIOD&to\[TIME\\_PERIOD\]=false.](https://data-explorer.oecd.org/vis?fs[0]=Topic%2C1%7CSociety%23SOC%23%7CInequality%23SOC_INE%23&pg=0&fc=Topic&bp=true&snb=2&vw=tb&df[ds]=dsDisseminateFinalDMZ&df[id]=DSD_WISE_IDD%40DF_IDD&df[ag]=OECD.WISE_INE&df[vs]=1.0&pd=2010%2C&dq=.A.QR_INC_DISP...T.METH2012.D.CUR.&ly[rw]=REF_AREA%2CUNIT_MEASURE&ly[cl]=TIME_PERIOD&to[TIME_PERIOD]=false.)

### 1.5 Difficulty making ends meet

**Indicator and unit of measurement:** Percentage of individuals who declare to have difficulty or great difficulty to make ends meet

**Type of indicator:** Deprivation

**Definition:** Difficulty in making ends meet refers to the percentage of people who report having difficulty or great difficulty in making ends meet. The question is asked to the household reference person, and the information is available at household level only. Data come from estimates provided by National Statistical Offices and the European Union Statistics on Income and Living Conditions, a nationally representative survey with large samples (from around 4 000 individuals in the smallest member states, to around 16 000 in the largest) covering all members of private households aged 16 or older and available for EU countries, as well as Norway and Switzerland.

**Source:** *European Union Statistics on Income and Living Conditions (EU-SILC) (database)*, <https://ec.europa.eu/eurostat/data/database>; and estimates provided by National Statistical Offices.

### 1.6 Financial insecurity

**Indicator and unit of measurement:** Percentage of individuals with equivalised liquid financial assets below 3 months of the annual national relative income poverty line

**Type of indicator:** Deprivation

**Definition:** Financial insecurity, a measure of wealth deprivation, refers to the percentage of people who are not currently income-poor, but who have liquid financial wealth below three months of the annual national relative income poverty line. Liquid financial wealth includes cash, quoted shares, mutual funds and bonds net of liabilities. These people are considered as “financially insecure” as, in the event of a shock, their liquid financial wealth would be insufficient to support them at the level of the income poverty line for more than three months. The indicator is compiled by the OECD following the OECD Guidelines for Micro Statistics on Household Wealth. The income concept used to compute this indicator follows as much as possible that used for reporting income poverty, i.e. household disposable income. However, for most countries, information on household disposable income is not available in the data sources used for the computation of wealth statistics; for this reason, the choice made here has been to rely on the concept of gross income (i.e. the total sum of wages and salaries, self-employment income, property income and current transfers received, all recorded before payment of taxes) when information on disposable income was not available. The poverty line is hence based on household disposable income for Australia, Canada, Chile, Denmark, Finland, Japan, Korea, Italy, the Netherlands, New Zealand, Norway, the United Kingdom and the United States, and on household gross income for the remaining countries.

**Source:** OECD Wealth Distribution Database, [https://data-explorer.oecd.org/vis?fs\[0\]=Topic%2C1%7CSociety%23SOC%23%7CInequality%23SOC\\_INE%23&pg=0&fc=Topic&bp=true&snb=2&df\[ds\]=dsDisseminateFinalDMZ&df\[id\]=DSD\\_WEALTH%40DF\\_WEALTH&df\[ag\]=OECD.WISE.INE&df\[vs\]=1.0&dq=.A.SH\\_LFA\\_B...PL\\_25&to\[TIME\\_PERIOD\]=false&pd=2010%2C&vw=tb](https://data-explorer.oecd.org/vis?fs[0]=Topic%2C1%7CSociety%23SOC%23%7CInequality%23SOC_INE%23&pg=0&fc=Topic&bp=true&snb=2&df[ds]=dsDisseminateFinalDMZ&df[id]=DSD_WEALTH%40DF_WEALTH&df[ag]=OECD.WISE.INE&df[vs]=1.0&dq=.A.SH_LFA_B...PL_25&to[TIME_PERIOD]=false&pd=2010%2C&vw=tb).

## 2. Work and Job Quality

Work refers to productive activity (whether paid or unpaid), and job quality is about both material and non-material aspects of people's working conditions. Material aspects of working conditions include issues such as remuneration (e.g. salary), the availability of jobs, and the risk of job loss. Non-material aspects relate to the quality of the working



environment, measured through workers' self-reports about their physical safety, the content of their job, how well this matches their skills and abilities, the autonomy afforded, their learning opportunities, working time arrangements, and relationships with co-workers.

## 2.1 Employment rate

**Indicator and unit of measurement:** Employed people aged 25-64, as a percentage of the population of the same age

**Type of indicator:** Country average and horizontal inequality (data by sex, education level and age [young=15-24 years, middle-aged=25-54, and old=55-64]).

**Definition:** The employment rate refers to the percentage of the adult population (people aged 25 to 64) who report having worked in gainful employment for at least one hour in the previous week. It also includes persons who, having already worked in their present job, were temporarily absent from work during the reference period of the survey while having retained a formal attachment to their job (e.g. due to parental leave, sickness, or annual leave). The data come from national Labour Force Surveys (LFSs) as compiled in the OECD Annual Labour Force Statistics (ALFS) Database, and are consistent with the standards set by the International Conference of Labour Statisticians.

**Source:** *OECD Employment and unemployment by five-year age group and sex - indicators (database)*, [https://data-explorer.oecd.org/vis?fs\[0\]=Topic%2C1%7CJobs%23JOB%23%7CEmployment%23JOB\\_EMP%23&pg=0&fc=Topic&bp=true&snb=27&vw=tb&df\[ds\]=dsDisseminateFinalDMZ&df\[id\]=DSD\\_LFS%40DF\\_LFS\\_INDIC&df\[ag\]=OECD.EL.S.SAE&df\[vs\]=1.1&pd=2010%2C&dq=AUS...T..&ly\[rw\]=AGE&ly\[cl\]=TIME\\_PERIOD&ly\[rs\]=LABOUR\\_FORCE\\_STATUS%2CMEASURE%2CUNIT\\_MEASURE&to\[TIME\\_PERIOD\]=false](https://data-explorer.oecd.org/vis?fs[0]=Topic%2C1%7CJobs%23JOB%23%7CEmployment%23JOB_EMP%23&pg=0&fc=Topic&bp=true&snb=27&vw=tb&df[ds]=dsDisseminateFinalDMZ&df[id]=DSD_LFS%40DF_LFS_INDIC&df[ag]=OECD.EL.S.SAE&df[vs]=1.1&pd=2010%2C&dq=AUS...T..&ly[rw]=AGE&ly[cl]=TIME_PERIOD&ly[rs]=LABOUR_FORCE_STATUS%2CMEASURE%2CUNIT_MEASURE&to[TIME_PERIOD]=false) and

*OECD Employment rates of adults, by educational attainment, age group and gender (database)*, [https://data-explorer.oecd.org/vis?tm=DSD\\_EAG\\_LSO\\_EA%40DF\\_LSO\\_NEAC\\_EMP&pg=0&snb=29&df\[ds\]=dsDisseminateFinalDMZ&df\[id\]=DSD\\_EAG\\_LSO\\_EA%40DF\\_LSO\\_NEAC\\_EMP&df\[ag\]=OECD.EDU.IMEP&df\[vs\]=1.0&dq=.T.Y25T64.ISCED11A\\_0T2%2BISCED11A\\_3\\_4%2BISCED11A\\_5T8.....OBS...A&pd=2010%2C&to\[TIME\\_PERIOD\]=true](https://data-explorer.oecd.org/vis?tm=DSD_EAG_LSO_EA%40DF_LSO_NEAC_EMP&pg=0&snb=29&df[ds]=dsDisseminateFinalDMZ&df[id]=DSD_EAG_LSO_EA%40DF_LSO_NEAC_EMP&df[ag]=OECD.EDU.IMEP&df[vs]=1.0&dq=.T.Y25T64.ISCED11A_0T2%2BISCED11A_3_4%2BISCED11A_5T8.....OBS...A&pd=2010%2C&to[TIME_PERIOD]=true).

## 2.2 Gender wage gap

**Indicator and unit of measurement:** Difference between male and female median wages expressed as a percentage of male wages

**Type of indicator:** Horizontal inequality

**Definition:** This indicator is calculated for full-time employees (not in full-year equivalent terms, as the indicator on earnings).

**Source:** *OECD Gender wage gap (database)*, [https://data-explorer.oecd.org/vis?pg=0&bp=true&snb=2&df\[ds\]=dsDisseminateFinalDMZ&df\[id\]=DSD\\_EARNINGS%40GENDER\\_WAGE\\_GAP&df\[ag\]=OECD.ELS.SAE&df\[vs\]=1.0&pd=2005%2C&dq=.....T&to\[TIME\\_PERIOD\]=false&tm=gender%20wage%20gap](https://data-explorer.oecd.org/vis?pg=0&bp=true&snb=2&df[ds]=dsDisseminateFinalDMZ&df[id]=DSD_EARNINGS%40GENDER_WAGE_GAP&df[ag]=OECD.ELS.SAE&df[vs]=1.0&pd=2005%2C&dq=.....T&to[TIME_PERIOD]=false&tm=gender%20wage%20gap).

### 2.3 Long-term unemployment rate

**Indicator and unit of measurement:** Percentage of the labour force unemployed for one year or more

**Type of indicator:** Deprivation and horizontal inequality (data by sex, age [young=15-24 years, middle-aged=25-54, and old=55-64] and education level (for those aged 25-64)).

**Definition:** The long-term unemployment rate refers to the number of people who have been unemployed for one year or more, as a percentage of the labour force (i.e. the sum of employed and unemployed persons). Unemployed persons are those who did not perform any paid work in the survey reference week, but who actively searched for work within the last 4 weeks, and would be available to start work within the next 2 weeks. The data are drawn from national Labour Force Surveys, as available in the OECD Employment Outlook Database, and are consistent with the standards set by the International Conference of Labour Statisticians. The horizontal inequality for education level refers to people aged 25 to 64 years old rather than 15 to 64 years old as is the case for the country average and sex horizontal inequalities.

**Source:** OECD calculations based on the *OECD Employment and unemployment by five-year age group and sex - indicators (database)*, [https://data-explorer.oecd.org/vis?fs\[0\]=Topic%2C1%7CJobs%23JOB%23%7CEmployment%23JOB\\_EMP%23&pg=0&fc=Topic&bp=true&snb=27&vw=tb&df\[ds\]=dsDisseminateFinalDMZ&df\[id\]=DSD\\_LFS%40DF\\_LFS\\_INDIC&df\[ag\]=OECD.EL.S.SAE&df\[vs\]=1.1&pd=2010%2C&dq=AUS...T..&ly\[rw\]=AGE&ly\[cl\]=TIME\\_PERIOD&ly\[rs\]=LABOUR\\_FORCE\\_STA.TUS%2CMEASURE%2CUNIT\\_MEASURE&to\[TIME\\_PERIOD\]=false](https://data-explorer.oecd.org/vis?fs[0]=Topic%2C1%7CJobs%23JOB%23%7CEmployment%23JOB_EMP%23&pg=0&fc=Topic&bp=true&snb=27&vw=tb&df[ds]=dsDisseminateFinalDMZ&df[id]=DSD_LFS%40DF_LFS_INDIC&df[ag]=OECD.EL.S.SAE&df[vs]=1.1&pd=2010%2C&dq=AUS...T..&ly[rw]=AGE&ly[cl]=TIME_PERIOD&ly[rs]=LABOUR_FORCE_STA.TUS%2CMEASURE%2CUNIT_MEASURE&to[TIME_PERIOD]=false).

*OECD Incidence of unemployment by duration (database)*, [https://data-explorer.oecd.org/vis?df\[ds\]=DisseminateFinalDMZ&df\[id\]=DSD\\_DUR%40DF\\_DUR\\_I&df\[ag\]=OECD.ELS.SAE&dq=...F%2BM%2B.T.T.Y\\_GE1.A&pd=2004%2C&to\[TIME\\_PERIOD\]=false&vw=tb](https://data-explorer.oecd.org/vis?df[ds]=DisseminateFinalDMZ&df[id]=DSD_DUR%40DF_DUR_I&df[ag]=OECD.ELS.SAE&dq=...F%2BM%2B.T.T.Y_GE1.A&pd=2004%2C&to[TIME_PERIOD]=false&vw=tb).

*OECD Unemployment rates of adults, by educational attainment, age group and gender (database)*, [https://data-explorer.oecd.org/vis?tm=DF\\_LSO\\_NEAC\\_UNEMP&pg=0&snb=1&df\[ds\]=dsDisseminateFinalDMZ&df\[id\]=DSD\\_EA.G\\_LSO\\_EA%40DF\\_LSO\\_NEAC\\_UNEMP&df\[ag\]=OECD.EDU.IMEP&df\[vs\]=1.0&dq=.T.Y25T64.ISCED11A\\_0T2%2BISCED11A\\_3\\_4%2BISCED11A\\_5T8.....OBS...A&pd=2010%2C&to\[TIME\\_PERIOD\]=true](https://data-explorer.oecd.org/vis?tm=DF_LSO_NEAC_UNEMP&pg=0&snb=1&df[ds]=dsDisseminateFinalDMZ&df[id]=DSD_EA.G_LSO_EA%40DF_LSO_NEAC_UNEMP&df[ag]=OECD.EDU.IMEP&df[vs]=1.0&dq=.T.Y25T64.ISCED11A_0T2%2BISCED11A_3_4%2BISCED11A_5T8.....OBS...A&pd=2010%2C&to[TIME_PERIOD]=true).

*OECD Duration of unemployment distribution among unemployed adults, by educational attainment, age group and gender (database)*, [https://data-explorer.oecd.org/vis?tm=DSD\\_EAG\\_LSO\\_EA%40DF\\_LSO\\_NEAC\\_DISTR\\_DURUNEMP&pg=0&snb=29&vw=tb&df\[ds\]=dsDisseminateFinalDMZ&df\[id\]=DSD\\_EAG\\_LSO\\_EA%40DF\\_LSO\\_NEAC\\_DISTR\\_DURUNEMP&df\[ag\]=OECD.EDU.IMEP&df\[vs\]=1.0&dq=.T.Y25T64.ISCED11A\\_0T2%2BISCED11A\\_3\\_4%2BISCED11A\\_5T8.....M\\_GE12..OBS...A3&pd=%2C&to\[TIME\\_PERIOD\]=true](https://data-explorer.oecd.org/vis?tm=DSD_EAG_LSO_EA%40DF_LSO_NEAC_DISTR_DURUNEMP&pg=0&snb=29&vw=tb&df[ds]=dsDisseminateFinalDMZ&df[id]=DSD_EAG_LSO_EA%40DF_LSO_NEAC_DISTR_DURUNEMP&df[ag]=OECD.EDU.IMEP&df[vs]=1.0&dq=.T.Y25T64.ISCED11A_0T2%2BISCED11A_3_4%2BISCED11A_5T8.....M_GE12..OBS...A3&pd=%2C&to[TIME_PERIOD]=true).

### 2.4 NEET

**Indicator and unit of measurement:** Percentage of youth (aged 15-24) not in employment, education or training (NEET)

**Type of indicator:** Deprivation and horizontal inequality (data by sex)

**Definition:** Youth not in employment, education or training (NEET) refers to the number of youth (i.e. people aged 15-24) who are not in employment, education or training, as a percentage of the population of the same age. The transition of younger individuals from education to working life varies with educational opportunities and social and economic contexts. In low-income countries, this indicator should be analysed in combination with the share of youth in vulnerable and informal jobs to better grasp the marginalisation of young people on the labour market. Education and training refer to courses currently being attended in the regular educational system, either during the previous four weeks or over a shorter period. Some OECD countries may include some people who are not classified as being in



formal education, but who are in training (or education) for employment or for tertiary entrance examinations. The data are compiled from National Labour Force Surveys by the OECD Labour Market and Social Outcomes of Learning Network through an annual questionnaire.

**Source:** *OECD Distribution of young adults' education and work status, for a given level of educational attainment, age group and gender (database)*, [https://data-explorer.oecd.org/vis?tm=DSD\\_EAG\\_LSO\\_EA%40DF\\_LSO\\_TRANS&pg=0&snb=29&vw=tb&df\[ds\]=dsDisseminateFinalDMZ&df\[id\]=DSD\\_EAG\\_LSO\\_EA%40DF\\_LSO\\_TRANS&df\[ag\]=OECD.EDU.IMEP&df\[vs\]=1.0&dq=AUS%2BAUT%2BBEL%2BCAN%2BCHL%2BCOL%2BCRI%2BCZE%2BDNK%2BEST%2BFIN%2BFRA%2BDEU%2BGRC%2BHUN%2BISL%2BISR%2BITA%2BLVA%2BLTU%2BMEX%2BNLD%2BNZL%2BNOR%2BPOL%2BPRT%2BSVK%2BSVN%2BESP%2BCHE%2BTUR%2BGBR%2BUSA%2BOECD%2BARG%2BBRA%2BBGR%2BHRV%2BPER%2BROU%2BZAF.F%2BM%2B\\_T.Y15T24.T.....NED.NE...OBS...A&pd=2010%2C&to\[TIME\\_PERIOD\]=true&lb=n.m.](https://data-explorer.oecd.org/vis?tm=DSD_EAG_LSO_EA%40DF_LSO_TRANS&pg=0&snb=29&vw=tb&df[ds]=dsDisseminateFinalDMZ&df[id]=DSD_EAG_LSO_EA%40DF_LSO_TRANS&df[ag]=OECD.EDU.IMEP&df[vs]=1.0&dq=AUS%2BAUT%2BBEL%2BCAN%2BCHL%2BCOL%2BCRI%2BCZE%2BDNK%2BEST%2BFIN%2BFRA%2BDEU%2BGRC%2BHUN%2BISL%2BISR%2BITA%2BLVA%2BLTU%2BMEX%2BNLD%2BNZL%2BNOR%2BPOL%2BPRT%2BSVK%2BSVN%2BESP%2BCHE%2BTUR%2BGBR%2BUSA%2BOECD%2BARG%2BBRA%2BBGR%2BHRV%2BPER%2BROU%2BZAF.F%2BM%2B_T.Y15T24.T.....NED.NE...OBS...A&pd=2010%2C&to[TIME_PERIOD]=true&lb=n.m.)

## 2.5 Labour market insecurity

**Indicator and unit of measurement:** Average expected monetary loss associated with becoming and staying unemployed, as a percentage of previous earnings

**Type of indicator:** Country average and horizontal inequality (data by sex, education level and age [young=15-29 years, middle-aged=30-49 years and old=50-64 years])

**Definition:** Labour market insecurity refers to the average expected monetary loss that an employed person would incur upon becoming and staying unemployed, expressed as a percentage of previous earnings. This loss depends on the risk of becoming unemployed, the expected duration of unemployment and the mitigation against these losses provided by unemployment benefits (effective insurance). Data on unemployment duration are used to measure the probability of entering unemployment (people who report having been unemployed for 1 month or less are assumed to have been employed in the previous month), as well as the average expected duration of completed unemployment spells (in months). Unemployment insurance is calculated as the product of the coverage of unemployment insurance/assistance (the share of the unemployed who declare receiving an unemployment benefit) and (model-based estimates of) the replacement rates (the ratio of public transfers received by recipients of unemployment benefits and previous earnings). These replacement rates include benefits from unemployment insurance and unemployment assistance but exclude social assistance benefits; they are computed by averaging replacement rates for different configurations of earnings levels and family types. The indicator combines data from the OECD Unemployment Duration Database, the OECD Benefit Recipients Database, the OECD Labour Market Programmes Database and the OECD Taxes and Benefits Database.

**Source:** *OECD Job Quality (database)*, [https://data-explorer.oecd.org/vis?tenant=archive&df\[ds\]=DisseminateArchiveDMZ&df\[id\]=DF\\_JOBQ&df\[ag\]=OECD.](https://data-explorer.oecd.org/vis?tenant=archive&df[ds]=DisseminateArchiveDMZ&df[id]=DF_JOBQ&df[ag]=OECD.)

## 2.6 Job strain

**Indicator and unit of measurement:** Percentage of employees who experience a number of job demands that exceed that of job resources

**Type of indicator:** Deprivation and horizontal inequality (data by sex, education level and age [young=15-29 years, middle-aged=30-49 years and old=50-64 years])

**Definition:** This indicator refers to the percentage of employees who experience job strain. Job strain is defined as a situation in which the job demands reported by employees (e.g. time pressure, and exposure to physical health risks) exceed their job resources (e.g. work autonomy, opportunities for learning and good workplace relationships). The

data used to compute this indicator refer to three types of job demands (namely a) physical demands related to hard physical work such as carrying and moving heavy loads; b) work intensity, which relates to longer-than-average working hours; and c) working time inflexibility); and three types of job resources (namely 1) work autonomy, which includes workers' freedom to choose and change their work tasks and methods; 2) training and learning opportunities, which include training and informal learning opportunities at work; and 3) perceived opportunity for career advancement, which is linked to workers' motivation at work). Job strain refers to instances where employees report more job demands than job resources. As no single data source covers all OECD countries, the job strain index is obtained by combining data from the European Working Conditions Survey (EWCS) and the Work Orientations modules of the International Social Survey Program (ISSP).

**Source:** OECD Job Quality (database), [https://data-explorer.oecd.org/vis?tenant=archive&df\[ds\]=DisseminateArchiveDMZ&df\[id\]=DF\\_JOBQ&df\[ag\]=OECD](https://data-explorer.oecd.org/vis?tenant=archive&df[ds]=DisseminateArchiveDMZ&df[id]=DF_JOBQ&df[ag]=OECD).

## 2.7 Long hours in paid work

**Indicator and unit of measurement:** Percentage of employees aged 15+ usually working 50+ hours per week

**Type of indicator:** Deprivation and horizontal inequality (data by sex and age [young=15-24 years, middle-age=25-54 years and old=55+ years])

**Definition:** Long hours in paid work refers to the percentage of employees (aged 15+) whose usual working hours are 50 hours or more per week. The threshold is set at 50 hours because, after commuting, unpaid work and basic needs (such as sleeping and eating) are taken into account, workers routinely working more than 50 hours per week are likely to be left with very few hours (one or two per day) for other activities. Moreover, in countries where there is a regulation on maximum working time, this is generally limited to 48 hours per week.

**Source:** OECD Labour Force Statistics (database), [https://data-explorer.oecd.org/vis?df\[ds\]=DisseminateFinalDMZ&df\[id\]=DSD\\_HW%40DF\\_LNG\\_WK\\_HRS&df\[ag\]=OECD.ELS.SAE&df\[vs\]=1.0&dq=FRA%2BAUS%2BAUT%2BBEL%2BCAN%2BCHL%2BCOL%2BCRI%2BCZE%2BDNK%2BES%2BFIN%2BDEU%2BGRC%2BHUN%2BISL%2BIRL%2BISR%2BITA%2BJPN%2BKOR%2BLVA%2BLTU%2BLUX%2BMEX%2BNLD%2BNZL%2BNOR%2BPOL%2BPRT%2BSVK%2BSVN%2BESP%2BSWE%2BCHE%2BTUR%2BGBR%2BUSA%2BOECD...T.Y55T64%2BY25T54%2BY15T24%2BT....ICSE931...H1T49%2BH\\_GE50.&pd=2010%2C&to\[TIME\\_PERIOD\]=false&vw=tb](https://data-explorer.oecd.org/vis?df[ds]=DisseminateFinalDMZ&df[id]=DSD_HW%40DF_LNG_WK_HRS&df[ag]=OECD.ELS.SAE&df[vs]=1.0&dq=FRA%2BAUS%2BAUT%2BBEL%2BCAN%2BCHL%2BCOL%2BCRI%2BCZE%2BDNK%2BES%2BFIN%2BDEU%2BGRC%2BHUN%2BISL%2BIRL%2BISR%2BITA%2BJPN%2BKOR%2BLVA%2BLTU%2BLUX%2BMEX%2BNLD%2BNZL%2BNOR%2BPOL%2BPRT%2BSVK%2BSVN%2BESP%2BSWE%2BCHE%2BTUR%2BGBR%2BUSA%2BOECD...T.Y55T64%2BY25T54%2BY15T24%2BT....ICSE931...H1T49%2BH_GE50.&pd=2010%2C&to[TIME_PERIOD]=false&vw=tb).

## 2.8 Wages

**Indicator and unit of measurement:** Average annual wages per full-time employee, USD at 2024 PPPs

**Type of indicator:** Country average, deprivation and vertical inequality

**Definition:** Wages refer to the average annual wages of employees working in all sectors of the economy and in all types of dependent employment, expressed on a full-time and full-year equivalent basis. The wages concept used, which is sourced from the National Accounts, includes employees' gross remuneration (i.e. including employers' social security contributions) before any deductions are made by the employer in respect of taxes, contributions to social security and pension schemes, life insurance premiums, union dues and other employee obligations. This value ("Wages and salaries") is divided by the number of full-time equivalent employees in the economy (obtained by multiplying data on the number of employees by the ratio of hours worked by all employees and by those working full-time, in order to correct for the prevalence of part-time work). Real compensation per employee (instead of real wages) are considered for Iceland, Mexico and New Zealand. This indicator hence combines data from the National Accounts, Labour Force Surveys, establishment/employer surveys, household income surveys and administrative registers from

tax files. Wages are expressed in US dollars (USD) using purchasing power parities (PPPs) for private consumption and are deflated using a price deflator for private final consumption expenditures in 2023 prices.

**Deprivation** refers the percentage of full-time workers earning less than two-thirds of gross median earnings of all full-time workers (not only employees).

**Vertical inequality** is measured by the gap between earnings of the top 10% (i.e. the decile with the highest earnings) relative to the bottom 10% (i.e. the decile with the lowest earnings) of full-time employees.

**Source:** *OECD Average annual wages (database)*, [https://data-explorer.oecd.org/vis?fs\[0\]=Topic%2C1%7CJobs%23JOB%23%7CEarnings%20and%20wages%23JOB\\_EW%23&pg=0&fc=Topic&bp=true&snb=9&vw=tb&df\[ds\]=dsDisseminateFinalDMZ&df\[id\]=DSD\\_EARNINGS%40AV\\_AN\\_WAGE&df\[ag\]=OECD.ELS.SAE&df\[vs\]=1.0&pd=2000%2C&dq=.....&ly\[rw\]=REF\\_AREA%2CPRICE\\_BASE%2CUNIT\\_MEASURE&ly\[cl\]=TIME\\_PERIOD&to\[TIME\\_PERIOD\]=false](https://data-explorer.oecd.org/vis?fs[0]=Topic%2C1%7CJobs%23JOB%23%7CEarnings%20and%20wages%23JOB_EW%23&pg=0&fc=Topic&bp=true&snb=9&vw=tb&df[ds]=dsDisseminateFinalDMZ&df[id]=DSD_EARNINGS%40AV_AN_WAGE&df[ag]=OECD.ELS.SAE&df[vs]=1.0&pd=2000%2C&dq=.....&ly[rw]=REF_AREA%2CPRICE_BASE%2CUNIT_MEASURE&ly[cl]=TIME_PERIOD&to[TIME_PERIOD]=false) .

*OECD Incidence of low and high pay (database)*, [https://data-explorer.oecd.org/vis?df\[ds\]=dsDisseminateFinalDMZ&df\[id\]=DSD\\_EARNINGS%40PAY\\_INCIDENCE&df\[ag\]=OECD.ELS.SAE&df\[vs\]=1.0&pd=2005%2C&dq=.....&ly\[rw\]=REF\\_AREA%2CMEASURE&ly\[cl\]=TIME\\_PERIOD&to\[TIME\\_PERIOD\]=false&vw=ov](https://data-explorer.oecd.org/vis?df[ds]=dsDisseminateFinalDMZ&df[id]=DSD_EARNINGS%40PAY_INCIDENCE&df[ag]=OECD.ELS.SAE&df[vs]=1.0&pd=2005%2C&dq=.....&ly[rw]=REF_AREA%2CMEASURE&ly[cl]=TIME_PERIOD&to[TIME_PERIOD]=false&vw=ov) and

*OECD Decile ratios of gross earnings (database)*, [https://data-explorer.oecd.org/vis?df\[ds\]=dsDisseminateFinalDMZ&df\[id\]=DSD\\_EARNINGS%40DEC\\_I&df\[ag\]=OECD.ELS.SAE&df\[vs\]=1.0&pd=2005%2C&dq=.....&ly\[rw\]=REF\\_AREA%2CUNIT\\_MEASURE%2CAGGREGATION\\_OPERATION&ly\[cl\]=TIME\\_PERIOD&to\[TIME\\_PERIOD\]=false&vw=tb](https://data-explorer.oecd.org/vis?df[ds]=dsDisseminateFinalDMZ&df[id]=DSD_EARNINGS%40DEC_I&df[ag]=OECD.ELS.SAE&df[vs]=1.0&pd=2005%2C&dq=.....&ly[rw]=REF_AREA%2CUNIT_MEASURE%2CAGGREGATION_OPERATION&ly[cl]=TIME_PERIOD&to[TIME_PERIOD]=false&vw=tb).

## 2.9 Job satisfaction

**Indicator and unit of measurement:** Mean average job satisfaction on a 0-10 scale, with responses ranging from 0 (not at all satisfied) to 10 (completely satisfied)

**Type of indicator:** Country average, deprivation, vertical and horizontal inequality (by sex, education and age [young=16-29 years, middle-aged=30-49 years and old=50+ years])

**Definition:** Job satisfaction is a measure of how individuals (aged 16/18, depending on the country) rate their satisfaction with their job on a 0-10 scale, from 0 (not at all satisfied) to 10 (completely satisfied). The average indicator refers to the mean values.

**Deprivation** refers to the percentage of people reporting a score equal to or below 4.

**Vertical inequality** for this indicator is measured by the ratio of job satisfaction of the top 20% (i.e. the quintile with the highest scores in job satisfaction) relative to the bottom 20% (i.e. the quintile with the lowest scores in job satisfaction).

**Source:** OECD calculations based on *Eurostat's European Union Statistics on Income and Living Conditions (EU-SILC) (database)*, <https://ec.europa.eu/eurostat/data/database>.

## 3. Housing

Housing provides shelter, safety, privacy and personal space. The area where people live also determines their access to many different services. Different aspects of housing conditions include the quality of housing, housing affordability, and the amenities and characteristics of neighbourhoods.

### 3.1 Overcrowding rate

**Indicator and unit of measurement:** Percentage of households living in overcrowded conditions

**Type of indicator:** Deprivation

**Definition:** The overcrowding rate (the percentage of households living in overcrowded conditions) adopts the EU-agreed definition, which takes into account different needs for living space according to the age and gender composition of the household. A household is considered as living in overcrowded conditions if less than one room is available in each household: for each couple in the household; for each single person aged 18 or more; for each pair of people of the same gender between 12 and 17; for each single person between 12 and 17 not included in the previous category; and for each pair of children under age 12. Data are sourced from the OECD Affordable Housing Database, which uses household survey data. For Chile, Mexico, Denmark, the Netherlands and the United States no information on subsidized tenants due to data limitations.

**Source:** OECD Affordable Housing Database, Housing space, <https://www.oecd.org/content/oecd/en/data/datasets/oecd-affordable-housing-database.html>

### 3.2 Housing affordability

**Indicator and unit of measurement:** Percentage of household gross adjusted disposable income remaining, after deductions for housing rents and maintenance

**Type of indicator:** Country average

**Definition:** Housing affordability refers to the percentage of household gross adjusted disposable income that remains available to the household after deducting housing costs. Housing costs include rent (including imputed rentals for housing held by owner-occupiers) and maintenance (expenditure on the repair of the dwelling, including miscellaneous services, water supply, electricity, gas and other fuels, as well as expenditure on furniture, furnishings, household equipment and goods and services for routine home maintenance). Data are sourced from the OECD National Accounts database and refer to both households and non-profit institutions serving households. Countries currently using the COICOP 2018 version of annual household final consumption expenditure include Austria, Belgium, Bulgaria, Czechia, Denmark, Estonia, France, Germany, Hungary, Ireland, Italy, Korea, Latvia, Lithuania, Netherlands, Portugal, Slovenia, Spain and Sweden.

**Source:** OECD calculations based on *OECD National accounts'*

*Annual household final consumption expenditure by purpose (COICOP 2018) (database)*, [https://data-explorer.oecd.org/vis?df\[ds\]=dsDisseminateFinalDMZ&df\[id\]=DSD\\_NAMAIN10%40DF\\_TABLE5A\\_T501&df\[ag\]=OECD.SDD.NAD&df\[vs\]=2.0&dq=A..S14.....CP04%2BCP05.XDC.V..&pd=2010%2C&to\[TIME\\_PERIOD\]=false&vw=tb](https://data-explorer.oecd.org/vis?df[ds]=dsDisseminateFinalDMZ&df[id]=DSD_NAMAIN10%40DF_TABLE5A_T501&df[ag]=OECD.SDD.NAD&df[vs]=2.0&dq=A..S14.....CP04%2BCP05.XDC.V..&pd=2010%2C&to[TIME_PERIOD]=false&vw=tb) complemented with

*Annual household final consumption expenditure by purpose (COICOP) (database)*, [https://data-explorer.oecd.org/vis?tm=Annual%20household%20final%20consumption%20expenditure%20by%20purpose%20%28COICOP%29&pg=0&snb=1&df\[ds\]=dsDisseminateFinalDMZ&df\[id\]=DSD\\_NAMAIN10%40DF\\_TABLE5\\_T501&df\[ag\]=OECD.SDD.NAD&df\[vs\]=1.0&pd=2010%2C&dq=A..S14.....CP05%2BCP04.XDC.V..&ly\[rw\]=EXPENDITURE&ly\[cl\]=TIME\\_PERIOD&to\[TIME\\_PERIOD\]=false](https://data-explorer.oecd.org/vis?tm=Annual%20household%20final%20consumption%20expenditure%20by%20purpose%20%28COICOP%29&pg=0&snb=1&df[ds]=dsDisseminateFinalDMZ&df[id]=DSD_NAMAIN10%40DF_TABLE5_T501&df[ag]=OECD.SDD.NAD&df[vs]=1.0&pd=2010%2C&dq=A..S14.....CP05%2BCP04.XDC.V..&ly[rw]=EXPENDITURE&ly[cl]=TIME_PERIOD&to[TIME_PERIOD]=false) and

*OECD Annual non-financial accounts by institutional sector (database)*, [https://data-explorer.oecd.org/vis?tm=DSD\\_NASEC10%40DF\\_TABLE14&pg=0&snb=15&vw=tb&df\[ds\]=dsDisseminateFinalDMZ&df\[id\]=DSD\\_NASEC10%40DF\\_TABLE14&df\[ag\]=OECD.SDD.NAD&df\[vs\]=1.1&dq=A..S1M..D.B7G.Z....V..&pd=2010%2C&to\[TIME\\_PERIOD\]=false&ly\[cl\]=TIME\\_PERIOD&ly\[rs\]=REF\\_AREA%2CCOMBINED\\_UNIT\\_MEASURE&lb=nm](https://data-explorer.oecd.org/vis?tm=DSD_NASEC10%40DF_TABLE14&pg=0&snb=15&vw=tb&df[ds]=dsDisseminateFinalDMZ&df[id]=DSD_NASEC10%40DF_TABLE14&df[ag]=OECD.SDD.NAD&df[vs]=1.1&dq=A..S1M..D.B7G.Z....V..&pd=2010%2C&to[TIME_PERIOD]=false&ly[cl]=TIME_PERIOD&ly[rs]=REF_AREA%2CCOMBINED_UNIT_MEASURE&lb=nm).



around 16 000 in the largest) covering all members of private households aged 16 or older and available for EU countries, as well as Norway and Switzerland.

**Source:** *European Union Statistics on Income and Living Conditions (EU-SILC) (database)*, <https://ec.europa.eu/eurostat/data/database>.

## 4. Work-life balance

Work-Life Balance is about being able to combine family commitments, leisure, and work.

### 4.1 Time off

**Indicator and unit of measurement:** Time allocated to leisure and personal care, hours per day, people in full-time employment

**Type of indicator:** Country average and horizontal inequality (data by sex and age [young=15-29 years, middle-aged=30-49 years, and old=50+ years]).

**Definition:** Time off is measured by hours per day and refers to people in full-time employment. It is the sum of personal care time (i.e. the amount of time spent sleeping, eating and drinking, on other personal care activities and on travel time associated with personal care) and leisure time (i.e. the amount of time spent practicing sports, interacting with friends and relatives, attending or participating in events, watching TV or listening to music, on other leisure activities, and on travel time associated with leisure). Only time spent on main or primary activities is included and as such, it is likely to underestimate especially the time spent on leisure activities, which are often performed in combination with other tasks (e.g. chatting on the phone with a friend while cooking). Time off is measured through Time Use Surveys (TUS), in which participants record, in a diary, the nature and the duration of the activities they have performed over 24 hours.

**Source:** OECD calculations based on public-use time use survey microdata when available; *Eurostat's Harmonised European Time Use Surveys (database)*, <https://ec.europa.eu/eurostat/web/time-use-surveys>; and estimates provided by National Statistical Offices.

### 4.2 Long unpaid working hours

**Indicator and unit of measurement:** Percentage of the total working-age population who usually work more than 60 hours per week, of which at least 30 hours involve unpaid work

**Type of indicator:** Country average

**Definition:** Long unpaid working hours corresponds to the percentage of the working-age (15-64) population who usually work more than 60 hours in total (paid and unpaid work) per week, of which at least 30 hours is unpaid work. 60 hours per week is the equivalent of two full-time jobs when the lower bound definition of full-time employment is considered (30 hours per week). This indicator captures long unpaid working hours both for people whose primary activity is domestic production and for those who face a "double day" burden of both paid work and long unpaid working hours. Unpaid work includes routine housework, shopping for goods and services (mainly food, clothing and items related to accommodation), caring for household members (children and adults) and non-household members, volunteering, travel related to household activities and other unpaid work. Paid work, on the other hand, includes time spent in all jobs and all commuting time. Time spent commuting to and from the workplace and to and from school



could not be separated out in a number of countries, and thus time spent commuting includes both work- and school-related commuting.

**Source:** OECD calculations based on public-use time use survey microdata when available; *Eurostat's Harmonised European Time Use Surveys (database)*, <https://ec.europa.eu/eurostat/web/time-use-surveys>; and estimates provided by National Statistical Offices.

#### 4.3 Gender gap in hours worked

**Indicator and unit of measurement:** Extra minutes of total time spent working (paid and unpaid) that women work, relative to men (aged 15-64), minutes per day

**Type of indicator:** Horizontal inequality

**Definition:** The gender gap in total hours worked refers to the extra time, in minutes per day, that women work relative to men (total time spent working: paid and unpaid). The data for this indicator have been restricted to the working-age population (15-64). Unpaid work includes routine housework, shopping for goods and services (mainly food, clothing and items related to accommodation), caring for household members (children and adults) and non-household members, volunteering, travel related to household activities and other unpaid work. Paid work, on the other hand, includes time spent in all jobs and all commuting time. Time spent commuting to and from the workplace and to and from school could not be separated out in a number of countries, and thus time spent commuting includes both work- and school-related commuting.

**Source:** *OECD Time Use (database)*, [https://stats.oecd.org/Index.aspx?DataSetCode=TIME\\_USE](https://stats.oecd.org/Index.aspx?DataSetCode=TIME_USE).

#### 4.4 Satisfaction with time use

**Indicator and unit of measurement:** Mean average satisfaction with time use on a 0-10 scale, with responses ranging from 0 (not at all satisfied) to 10 (completely satisfied)

**Type of indicator:** Country average, deprivation, vertical and horizontal inequality (by sex, education and age [young=16-29 years, middle-aged=30-49 years and old=50+ years])

**Definition:** Satisfaction with time use is a measure of how individuals (aged 16/18 + depending on the country) rate their satisfaction with time use on an 11-point scale, from 0 (not at all satisfied) to 10 (completely satisfied). The average indicator refers to the mean values. Respondents are asked to provide a broad, reflective appraisal of all areas of their time use.

**Deprivation** refers to the percentage of people reporting a score equal to or below 4.

**Vertical inequality** for this indicator is measured by the ratio of satisfaction with time use scores of the top 20% (i.e. the quintile with the highest scores in satisfaction with time use) relative to the bottom 20% (i.e. the quintile with the lowest scores in satisfaction with time use).

**Source:** OECD calculations based on *Eurostat's European Union Statistics on Income and Living Conditions (EU-SILC) (database)*, <https://ec.europa.eu/eurostat/data/database>, and estimates provided by National Statistical Offices.

## 5. Health

Health is about being and feeling well: a long life unencumbered by physical or mental illness, and the ability to participate in activities that people value.

### 5.1 Life expectancy

**Indicator and unit of measurement:** Life expectancy at birth, years

**Type of indicator:** Country average and horizontal inequality (data by sex)

**Definition:** Life expectancy at birth is a summary measure of mortality rates, and refers to the number of years a child born today could expect to live based on the age-specific death rates currently prevailing. It is only an estimate of the expected life span of a given cohort, as the age-specific death rates of a particular birth cohort cannot be known in advance.

**Source:** OECD Life expectancy (database), [https://data-explorer.oecd.org/vis?tm=life%20expectancy&pg=0&snb=16&df\[ds\]=dsDisseminateFinalDMZ&df\[id\]=DSD\\_HEALTH\\_STAT%40DF\\_LE&df\[ag\]=OECD.ELS.HD&df\[vs\]=1.0&pd=2010%2C&dq=.A.LFEXP..Y0.....&ly\[rw\]=REF\\_AREA&ly\[cl\]=TIME\\_PERIOD&ly\[rs\]=SEX&to\[TIME\\_PERIOD\]=false](https://data-explorer.oecd.org/vis?tm=life%20expectancy&pg=0&snb=16&df[ds]=dsDisseminateFinalDMZ&df[id]=DSD_HEALTH_STAT%40DF_LE&df[ag]=OECD.ELS.HD&df[vs]=1.0&pd=2010%2C&dq=.A.LFEXP..Y0.....&ly[rw]=REF_AREA&ly[cl]=TIME_PERIOD&ly[rs]=SEX&to[TIME_PERIOD]=false).

### 5.2 Perceived health

**Indicator and unit of measurement:** Percentage of the population 16 years or over reporting “good” or “very good” health

**Type of indicator:** Country average, deprivation, and horizontal inequality (data by sex, education and age [young=15-24 years, middle-aged=25-64 years and old=65+ years])

**Definition:** Perceived health refers to people’s overall self-reported health status. Averages in perceived health refer to the percentage of adults reporting “good” or “very good” health. Data are based on general household surveys or on more detailed health interviews. The indicator is based on questions such as: “How is your health in general?”, with answers usually classified as “very good”, “good”, “not very good” and “poor” – although in some non-European countries (Australia, Canada, Chile, Israel, New Zealand, the United States) different response scales are used, which may lead to an upward bias in the estimates. In the OECD Health Status database, the response categories from different surveys are rescored to fit into three broad categories of “good/very good” (all positive response categories), “fair” (neither good nor bad), “bad/very bad” (all negative response categories). Respondents are generally 16 years or over, though the specific age range varies across countries. Data are based on general household surveys or on more detailed health interviews.

**Deprivation** in perceived health is measured as the percentage of adults reporting “bad” or “very bad” health.

**Source:** OECD Perceived health status (database), [https://data-explorer.oecd.org/vis?pg=0&bp=true&snb=9&df\[ds\]=dsDisseminateFinalDMZ&df\[id\]=DSD\\_HEALTH\\_STAT%40DF\\_PHS&df\[ag\]=OECD.ELS.HD&df\[vs\]=1.0&dq=.A...Y\\_GE15..T.....G..&pd=2010%2C&to\[TIME\\_PERIOD\]=false&tm=perceived%20health](https://data-explorer.oecd.org/vis?pg=0&bp=true&snb=9&df[ds]=dsDisseminateFinalDMZ&df[id]=DSD_HEALTH_STAT%40DF_PHS&df[ag]=OECD.ELS.HD&df[vs]=1.0&dq=.A...Y_GE15..T.....G..&pd=2010%2C&to[TIME_PERIOD]=false&tm=perceived%20health)

### 5.3 Deaths from suicide, alcohol abuse and drug overdose

**Indicator and unit of measurement:** Combined deaths from suicide, acute alcohol abuse and drug overdose, per 100 000 population (age-standardised based on the 2015 OECD population structure)

**Type of indicator:** Country average and horizontal inequality (data by sex)

**Definition:** Suicide, alcohol- and drug-related deaths is an objective measure of severe mental illness and addiction. The indicator reported here is drawn from official death registries obtained from the WHO Mortality Database and OECD calculations of population statistics, and refers to combined deaths from suicides, alcohol and drug abuse per 100 000 population (standardised to 2010). The following ICD-10 codes are used to calculate this indicator: X40-X45 (Accidental poisoning by and exposure to noxious substances: nonopioid analgesics, antipyretics and antirheumatics; antiepileptic, sedative-hypnotic, antiparkinsonism and psychotropic drugs, not elsewhere classified; narcotics and psychodysleptics [hallucinogens], not elsewhere classified; other drugs acting on the autonomic nervous system; other and unspecified drugs, medicaments and biological substances; alcohol), X60-X84 (Intentional self-poisoning by drugs, medicaments and biological substances), Y10-Y15 (Event of undetermined intent: poisoning by and exposure to drugs, medicaments and biological substances, undetermined intent; alcohol, undetermined intent), Y87.0 (Sequelae of intentional self-harm), E24.4 (Alcohol-induced pseudo-Cushing's syndrome), F10-16 (Mental and behavioural disorders due to psychoactive substance abuse of alcohol; opioids; cannabinoids; sedatives or hypnotics; cocaine; other stimulants, including caffeine; hallucinogens), F18-F19 (Mental and behavioural disorders due to use of volatile solvents; multiple drug use and use of other psychoactive substances), G31.2 (Degeneration of nervous system due to alcohol), G62.1 (Alcoholic polyneuropathy), G72.1 (Alcoholic myopathy), I42.6 (Alcoholic cardiomyopathy), K29.2 (Alcoholic gastritis), K70 (Alcoholic liver disease), K73 (Chronic hepatitis, not elsewhere classified), K74.0-K74.2 (Hepatic fibrosis, Hepatic sclerosis, Hepatic fibrosis with hepatic sclerosis), K74.6 (Other and unspecified cirrhosis of liver), K85.2 (Alcohol-induced acute pancreatitis), K86.0 (Alcohol induced chronic pancreatitis), Q86.0 (Fetal induced alcohol syndrome (dysmorphic)), and R78.0 (Findings of alcohol not normally found in blood).

**Source:** Calculations based on official mortality statistics included in the *WHO Mortality Database*, <https://www.who.int/data/data-collection-tools/who-mortality-database>; and OECD calculations of population statistics.

### 5.4 Depressive symptoms

**Indicator and unit of measurement:** Percentage of the population 15 years and over reporting having experienced a range of depressive symptoms in the past two weeks

**Type of indicator:** Country average and horizontal inequality (data by sex, education and age [young=15-24 years, middle aged=15-64 years, and old=65+ years])

**Definition:** Self-reported depressive symptoms as measured by the Patient Health Questionnaire (PHQ, version 8) is a measure of mental (ill)health. It refers to the percentage of people 15 years or over who report experiencing a range of depressive symptoms in the past two weeks: little interest or pleasure in doing things; feeling down, depressed or hopeless; trouble falling or staying asleep, or sleeping too much; feeling tired or having little energy; poor appetite or overeating; feeling bad about yourself or that you are a failure or have let yourself or your family down; trouble concentrating on things, such as reading the newspaper or watching television; moving or speaking so slowly that other people could have noticed, or being so fidgety or restless that you have been moving around a lot more than usual. In line with the criteria of the Diagnostic and Statistical Manual of Mental Disorders (DSM-IV), a respondent is characterised as having depressive symptoms if one of the first two items (little interest or pleasure in doing things, feeling down, depressed or hopeless) and five or more of the total list (major depression) or one of the first two items and two to four of the total list (other depressive symptoms) are reported for at least half of the reference period.

**Source:** *European Health Interview Survey (EHIS) (database)*, <https://ec.europa.eu/eurostat/web/microdata/european-health-interview-survey>; and estimates provided by National Statistical Offices.

### *5.5 Symptoms of anxiety (to be added in the next wave of database updates)*

**Indicator and unit of measurement:** Percentage of the population 15 years and over reporting having experienced symptoms of generalized anxiety in the past two weeks

**Type of indicator:** Country average and horizontal inequality (data by sex, education and age [young=15-24 years, middle aged=25-64 years, and old=65+ years])

**Definition:** This indicator, most likely either the GAD-2 or GAD-7, will be added in the next wave of database updates.

**Source:** Estimates provided by National Statistical Offices.

## 6. Knowledge and Skills

Knowledge and skills are about what people know and can do.

### *6.1 Student skills in reading*

**Indicator and unit of measurement:** Cognitive skills of 15-year-old students in reading (mean score)

**Type of indicator:** Country average, deprivation, vertical and horizontal inequality (data by sex and parents' highest education)

**Definition:** Student cognitive skills are measured using the OECD Programme for International Student Assessment (PISA) test scores. PISA assessments are conducted once every three years, with the focal subject cycling between mathematics, reading and science. PISA assessments are normalised such that the OECD average is 500 points, with a standard deviation of 100 points. Normalisation is established in the first year a subject is a focal subject, implying that the value of the OECD average in any given year may not be equal to 500. Because PISA assessments are conducted within schools, they capture the cognitive ability only of 15-year-olds who are currently enrolled in school. These tests thus do not include dropouts, or home-schooled students.

**Deprivation** is measured as the percentage of 15-year-old students who are low achievers in PISA (i.e. those with cognitive skills below Level 2 in all three subjects).

**Vertical inequality** is measured by the ratio of cognitive skills among top performers (those above the 90th percentile) to bottom performers (those below the 10th percentile), for each of the three PISA subject areas. The closer the ratio is to 1, the lower the gap between top and bottom students.

**Source:** OECD (2023), *PISA 2022 Results (Volume I): The State of Learning and Equity in Education*, PISA, OECD Publishing, Paris, <https://doi.org/10.1787/53f23881-en>.

## 6.2 Student skills in mathematics

**Indicator and unit of measurement:** Cognitive skills of 15-year-old students in maths (mean score)

**Type of indicator:** Country average, deprivation, vertical and horizontal inequality (data by sex and parents' highest education)

**Definition:** Student cognitive skills are measured using the OECD Programme for International Student Assessment (PISA) test scores. PISA assessments are conducted once every three years, with the focal subject cycling between mathematics, reading and science. PISA assessments are normalised such that the OECD average is 500 points, with a standard deviation of 100 points. Normalisation is established in the first year a subject is a focal subject, implying that the value of the OECD average in any given year may not be equal to 500. Because PISA assessments are conducted within schools, they capture the cognitive ability only of 15-year-olds who are currently enrolled in school. These tests thus do not include dropouts, or home-schooled students.

**Deprivation** is measured as the percentage of 15-year-old students who are low achievers in PISA (i.e. those with cognitive skills below Level 2 in all three subjects)..

**Vertical inequality** is measured by the ratio of cognitive skills among top performers (those above the 90th percentile) to bottom performers (those below the 10th percentile), for each of the three PISA subject areas. The closer the ratio is to 1, the lower the gap between top and bottom students.

**Source:** OECD (2023), *PISA 2022 Results (Volume I): The State of Learning and Equity in Education*, PISA, OECD Publishing, Paris, <https://doi.org/10.1787/53f23881-en>.

## 6.3 Student skills in science

**Indicator and unit of measurement:** Cognitive skills of 15-year-old students in science (mean score)

**Type of indicator:** Country average, deprivation, vertical and horizontal inequality (data by sex and parents' highest education)

**Definition:** Student cognitive skills are measured using the OECD Programme for International Student Assessment (PISA) test scores. PISA assessments are conducted once every three years, with the focal subject cycling between mathematics, reading and science. PISA assessments are normalised such that the OECD average is 500 points, with a standard deviation of 100 points. Normalisation is established in the first year a subject is a focal subject, implying that the value of the OECD average in any given year may not be equal to 500. Because PISA assessments are conducted within schools, they capture the cognitive ability only of 15-year-olds who are currently enrolled in school. These tests thus do not include dropouts, or home-schooled students.

**Deprivation** is measured as the percentage of 15-year-old students who are low achievers in PISA (i.e. those with cognitive skills below Level 2 in all three subjects).

**Vertical inequality** is measured by the ratio of cognitive skills among top performers (those above the 90th percentile) to bottom performers (those below the 10th percentile), for each of the three PISA subject areas. The closer the ratio is to 1, the lower the gap between top and bottom students.

**Source:** OECD (2023), *PISA 2022 Results (Volume I): The State of Learning and Equity in Education*, PISA, OECD Publishing, Paris, <https://doi.org/10.1787/53f23881-en>.

### 6.4 Adult skills in numeracy

**Indicator and unit of measurement:** PIAAC mean scores in numeracy

**Type of indicator:** Country average, deprivation, vertical and horizontal inequality (data by sex and age [young=16-24 years, middle-aged=25-44 years, and old=45-64 years])

**Definition:** Adult cognitive skills are measured using the OECD Programme for the International Assessment of Adult Competencies (PIAAC) assessments in literacy and numeracy. The first cycle of PIAAC comprised three rounds, running from 2011 to 2017, covering over 220 000 adults in 38 countries. Adults are administered assessments of numeracy, literacy and problem-solving skills, with possible scores ranging from 0 to 500 (unlike PISA, PIAAC results are not normalised, meaning that the highest possible score is 500). Data for Belgium are limited to Flanders, and those for the United Kingdom to England and Northern Ireland.

**Deprivation** for this indicator refer to the percentage of adults scoring at or below Level 1 in both literacy and numeracy assessment.

**Vertical inequality** for this indicator is measured by the ratio of cognitive skills among top performers (those above the 90th percentile) to bottom performers (those below the 10th percentile), for each of the two PIAAC assessment areas. The closer the ratio is to 1, the lower the gap between top and bottom performers.

**Source:** OECD Programme for the International Assessment of Adult Competencies (PIAAC), <https://www.oecd.org/skills/piaac/>.

### 6.5 Adult skills in literacy

**Indicator and unit of measurement:** PIAAC mean scores in literacy

**Type of indicator:** Country average, deprivation, vertical and horizontal inequality (data by sex and age [young=16-24 years, middle-aged=25-44 years, and old=45-64 years])

**Definition:** Adult cognitive skills are measured using the OECD Programme for the International Assessment of Adult Competencies (PIAAC) assessments in literacy and numeracy. The first cycle of PIAAC comprised three rounds, running from 2011 to 2017, covering over 220 000 adults in 38 countries. Adults are administered assessments of numeracy, literacy and problem-solving skills, with possible scores ranging from 0 to 500 (unlike PISA, PIAAC results are not normalised, meaning that the highest possible score is 500). Data for Belgium are limited to Flanders, and those for the United Kingdom to England and Northern Ireland.

**Deprivation** for this indicator refer to the percentage of adults scoring at or below Level 1 in both literacy and numeracy assessment.

**Vertical inequality** for this indicator is measured by the ratio of cognitive skills among top performers (those above the 90th percentile) to bottom performers (those below the 10th percentile), for each of the two PIAAC assessment areas. The closer the ratio is to 1, the lower the gap between top and bottom performers.

**Source:** OECD Programme for the International Assessment of Adult Competencies (PIAAC), <https://www.oecd.org/skills/piaac/>.



## 7. Social connections

Social Connections capture the quantity of social interactions (e.g., frequency and amount of time individuals spend with household members, their family, friends, colleagues, and other known persons), their quality (e.g. satisfaction with social interactions, perceived loneliness), and the support (e.g. emotional and financial) provided by these connections.

### 7.1 Social support

**Indicator and unit of measurement:** Percentage of people who report having friends or relatives whom they can count on in times of trouble

**Type of indicator:** Country average, deprivation, and horizontal inequality (data by sex, education and age [young=15-29 years, middle-aged=30-49 years, and old=50+ years])

**Definition:** Social support is measured by the percentage of people answering "yes" to a (yes/no) question: "If you were in trouble, do you have relatives or friends you can count on to help you whenever you need them, or not?". The source for these data is the Gallup World Poll, which samples around 1 000 people per country, per year. The sample is ex ante designed to be nationally representative of the population aged 15 or over (including rural areas).

Due to the small sample size, data are pooled as follows:

- for the country average and data by sex: 3-year pooled averages (from 2006 to 2019, resulting in five data points: 2008-10, 2011-13, 2014-16, 2017-19, 2020-22) and 2-year pooled averages (from 2006 to 2007 and from 2023 to 2024, resulting in 2 data points: 2006-07 and 2023-24);
- for data by age: 7-year pooled averages (from 2011 to 2024, resulting in 2 data points: 2011-17 and 2018-24) and a 5-year pooled average for 2006-10;
- for data by education attainment: 5-year pooled averages (from 2010 to 2023, resulting in three data points: 2010-14, 2015-19 and 2020-24) and a 4-year pooled average for 2006-09.

**Deprivation** in social support refer to the percentage of people answering "no" to the question mentioned above.

**Source:** Gallup World Poll, <https://gallup.com/analytics/232838/world-poll.aspx>.

### 7.2 Social interactions

**Indicator and unit of measurement:** Time spent interacting with friends and family as primary activity, hours per week

**Type of indicator:** Country average and horizontal inequality (data by sex and age [young=15-29 years, middle-aged=30-49 years, and old=50+ years])

**Definition:** Time spent in social interactions refers to the average number of hours spent in social interactions per week. This includes the amount of time allocated to interacting with friends or relatives as a primary activity (e.g. talking with family members or going out with friends) in a typical day (the averages were converted into weekly estimates). Therefore, country averages do not exclude people who did not spend any time in social interactions during the surveyed day. Since only the time spent interacting with family and friends as the main or primary activity is considered, time estimates presented are likely to underestimate the total amount spent on social activities, as they exclude those interactions that occur alongside a primary activity (e.g. talking around the dinner table, or chatting on the phone while performing unpaid work).

**Source:** OECD calculations based on public-use time use survey microdata when available; *Eurostat's Harmonised European Time Use Surveys (database)*, <https://ec.europa.eu/eurostat/web/time-use-surveys>; and estimates provided by National Statistical Offices.

### 7.3 Satisfaction with personal relationships

**Indicator and unit of measurement:** Mean average satisfaction with personal relationships on an 11-point scale, with responses ranging from 0 (not at all satisfied) to 10 (completely satisfied)

**Type of indicator:** Country average, deprivation, vertical and horizontal inequality (data by sex, education and age [young=16-29 years, middle-aged=30-49 years, and old=50+ years])

**Definition:** Satisfaction with personal relationships refers to the mean score of survey respondents who rate their satisfaction with their personal relationships on an 11-point scale, from 0 (not at all satisfied) to 10 (completely satisfied). The variable refers to the respondent's opinion/feeling about the degree of satisfaction with his/her personal relationships. The respondent is expected to make a broad, reflective appraisal of all areas of his/her personal relationships (e.g. relatives, friends, colleagues from work etc.) in a particular point in time (these days). This indicator refers to individuals aged 16 or more, except for Canada (15 or more) and Mexico (18 or more).

**Deprivation** for this indicator refer to the percentage of people answering 4 or below.

**Vertical inequality** for this indicator is measured by the ratio of satisfaction with personal relationships scores of the top 20% (i.e. the quintile with the highest scores in satisfaction with personal relationships) relative to the bottom 20% (i.e. the quintile with the lowest scores in satisfaction with personal relationships).

**Source:** OECD calculations based on *Eurostat's European Union Statistics on Income and Living Conditions (EU-SILC) (database)*, <https://ec.europa.eu/eurostat/data/database> and estimates provided by National Statistical Offices..

### 7.4 Loneliness

**Indicator and unit of measurement:** Percentage of people feeling lonely most or all of the time in the past four weeks

**Type of indicator:** Deprivation and horizontal inequality (data by sex, education and age [young=16-29 years, middle-aged=30-49 years, and old=50+ years])

**Definition:** Loneliness refers to the percentage of people who report feeling lonely "all of the time" and "most of the time" in the past four weeks. The following question is asked to the household reference person: "How much of the time over the past four weeks have you been feeling lonely?", with response categories: "all of the time", "most of the time", "some of the time", "a little of the time", and "none of the time". Canada, Japan, the United Kingdom and the United States do not include a time frame in their question format for loneliness and are therefore not directly comparable with the other countries. The United Kingdom data refers to England only.

**Source:** *European Union Statistics on Income and Living Conditions (EU-SILC) (database)*, <https://ec.europa.eu/eurostat/web/income-andliving-conditions>; and estimates provided by National Statistical Offices.

## 8. Civic Engagement

Civic Engagement is about whether people can and do take part in a range of important civic activities that enable them to shape the society they live in.

### 8.1 Having a say in government

**Indicator and unit of measurement:** Percentage of respondents with a score equal to 6 or above, on a scale of 0 (not at all) to 10 (a great deal) when asked “How much would you say the political system in your country allows people like you to have a say in what the government does?”

**Type of indicator:** Country average, deprivation and horizontal inequality (data by sex, education and age [young=18-29 years, middle-aged=30-49 years, and old=50+ years])

**Definition:** Having a say in what the government does is measured through a question in the OECD Survey on the Drivers of Trust in Public Institutions, also called OECD Trust Survey, which asks respondents to rate on a 0-10 point scale, where 0 stands for “not at all” and 10 for “a great deal”, what extent they agree with the statement, “How much would you say the political system in [COUNTRY] allows people like you to have a say in what the government does?”. Having a say in government refers to the percentage of respondents who gave a score of at least 6.

**Deprivation** refers to the percentage of respondents who gave a score of 4 or less.

**Source:** OECD Trust Survey, <https://www.oecd.org/governance/trust-in-government/>.

### 8.2 Voter turnout

**Indicator and unit of measurement:** Percentage of votes cast among the population registered to vote

**Type of indicator:** Country average and horizontal inequality (data by sex, education and age [young=16-24 years, middle-aged=25-54 years, and old=55+ years])

**Definition:** Voter turnout is measured as the number of votes cast, as a percentage of the population registered to vote (i.e. the number of people listed in the electoral register). This information is gathered from National Statistical Offices and electoral management bodies, compiled by the International Institute for Democracy and Electoral Assistance, and refers to major national elections. National elections refer to presidential elections in Brazil, Chile, Colombia, Czechia, Finland, France, Indonesia, Iceland, Korea, Lithuania, Mexico, Peru, Romania and the United States, and to parliamentary elections for other countries. Australia, Belgium, Brazil, Luxembourg and Türkiye enforce compulsory voting.

Estimates of the distribution of voter turnout by population group are obtained through post-election self-reported survey data from the Comparative Study of Electoral Systems. This is measured by the percentage of people answering “yes” to a (yes/no) question: “Did respondent cast a ballot (in current election)?”.

**Source:** For country average data: *Institute for Democracy and Electoral Assistance (IDEA) (database)*, <https://www.idea.int/>; and for horizontal inequality data: *Comparative Study of Electoral Systems (database)*, <https://cses.org/>; and estimates provided by National Statistical Offices.

## 9. Environmental Quality

Environmental Quality affects human health through the quality of air, water and soil, which is related to the presence and density of hazardous substances. Environmental Quality also matters intrinsically to people who value natural beauty and the amenities that affect their life choices (e.g. a place to live). Finally, people benefit from environmental services and assets.

### 9.1 Access to green space

**Indicator and unit of measurement:** Percentage of urban population with access to green space within a 5 minutes' walk

**Type of indicator:** Country average

**Definition:** Access to recreational green space in urban areas refers to the share of the urban population with access to recreational green space within 5 minutes' walking distance from their home (equivalent to 400 meters). Public green areas for predominantly recreational use such as gardens, playgrounds, zoos, parks, castle parks and cemeteries. Suburban natural areas that have become and are managed as urban parks. Forests or green areas extending from the surroundings into urban areas are mapped as green urban areas when at least two sides are bordered by urban areas and structures, and traces of recreational use are visible. The underlying method consists of determining an area of easy walking distance – around 5 minutes' walking time or a walking distance from home equal to 400 meters (with an average speed of 5 km per hour) – around an inhabited European Urban Atlas polygon.

**Source:** Calculations based on Poelman (2018), "A walk to the park? Assessing access to green areas in Europe's cities, update using completed Copernicus urban atlas data", European Commission, Regional and urban policy, [https://ec.europa.eu/regional\\_policy/sources/docgener/work/2018\\_01\\_green\\_urban\\_area.pdf](https://ec.europa.eu/regional_policy/sources/docgener/work/2018_01_green_urban_area.pdf); and estimates provided by National Statistical Offices.

### 9.2 Exposure to outdoor air pollution

**Indicator and unit of measurement:** Percentage of population exposed to more than 5 µg/m<sup>3</sup> of PM<sup>2.5</sup>

**Type of indicator:** Country average

**Definition:** Exposure to outdoor air pollution refers to the percentage of the population exposed to more than 5 µg/m<sup>3</sup> of PM<sup>2.5</sup>, i.e. living in areas with annual concentrations of fine particulate matter less than 2.5 microns in diameter exceeding the 2021 WHO Air Quality Guidelines value of 5 micrograms per cubic metre.

**Source:** OECD Exposure to air pollution (database), [https://data-explorer.oecd.org/vis?fs\[0\]=Topic%2C1%7CEnvironment%23ENV%23%7CAir%20and%20climate%23ENV\\_AC%23&pg=0&fc=Topic&bp=true&snb=12&vw=tb&df\[ds\]=dsDisseminateFinalDMZ&df\[id\]=DSD\\_AIR\\_POL%40DF\\_AIR\\_POLL&df\[ag\]=OECD.ENV.EPI&df\[vs\]=1.0&pd=2010%2C2020&dq=AUT%2BAUS%2BBEL%2BCAN%2BCHL%2BCOL%2BCRI%2BCZE%2BDNK%2BEST%2BFIN%2BFRA%2BDEU%2BGRC%2BHUN%2BISL%2BIRL%2BISR%2BITA%2BJPN%2BKOR%2BLVA%2BLTU%2BLUX%2BMEX%2BNLD%2BNZL%2BNOR%2BPOL%2BPRT%2BSVK%2BSVN%2BESP%2BSWE%2BCHE%2BTUR%2BGBR%2BUSA%2BG7%2BG20%2BEA20%2BEU27\\_2020%2BOECD%2BOECD%2BOECD%2BAES%2BEMES%2BIPAC%2BW.A.POP\\_EXP\\_POL.EL\\_GT\\_5.PT\\_POP.&ly\[cl\]=TIME\\_PERIOD&ly\[rs\]=ISO&ly\[rw\]=REF\\_AREA&to\[TIME\\_PERIOD\]=false](https://data-explorer.oecd.org/vis?fs[0]=Topic%2C1%7CEnvironment%23ENV%23%7CAir%20and%20climate%23ENV_AC%23&pg=0&fc=Topic&bp=true&snb=12&vw=tb&df[ds]=dsDisseminateFinalDMZ&df[id]=DSD_AIR_POL%40DF_AIR_POLL&df[ag]=OECD.ENV.EPI&df[vs]=1.0&pd=2010%2C2020&dq=AUT%2BAUS%2BBEL%2BCAN%2BCHL%2BCOL%2BCRI%2BCZE%2BDNK%2BEST%2BFIN%2BFRA%2BDEU%2BGRC%2BHUN%2BISL%2BIRL%2BISR%2BITA%2BJPN%2BKOR%2BLVA%2BLTU%2BLUX%2BMEX%2BNLD%2BNZL%2BNOR%2BPOL%2BPRT%2BSVK%2BSVN%2BESP%2BSWE%2BCHE%2BTUR%2BGBR%2BUSA%2BG7%2BG20%2BEA20%2BEU27_2020%2BOECD%2BOECD%2BOECD%2BAES%2BEMES%2BIPAC%2BW.A.POP_EXP_POL.EL_GT_5.PT_POP.&ly[cl]=TIME_PERIOD&ly[rs]=ISO&ly[rw]=REF_AREA&to[TIME_PERIOD]=false).

### 9.3 Exposure to extreme temperature

**Indicator and unit of measurement:** Percentage of population exposed to hot days for at least two weeks a year

**Type of indicator:** Deprivation

**Definition:** Percentage of population exposed to hot days (maximum temperature > 35°C) for at least two weeks a year. Exposure to extreme heat has documented impacts on health and other well-being outcomes, and is likely to increase in the face of climate change.

**Source:** *OECD Exposure to extreme temperature (database)*, [https://data-explorer.oecd.org/vis?tm=exposure%20to%20extreme%20temperature&pg=0&snb=3&df\[ds\]=dsDisseminateFinalDMZ&df\[id\]=DSD\\_ECH%40EXT\\_TEMP&df\[ag\]=OECD.ENV.EPI&df\[vs\]=1.1&pd=2010%2C&dq=CHE%2BSVK%2BLUX%2BHUN%2BCZE%2BAUT%2BAUS%2BBEL%2BCAN%2BCHL%2BCOL%2BCRI%2BDNK%2BEST%2BFIN%2BFRA%2BDEU%2BGRC%2BISL%2BIRL%2BISR%2BITA%2BJPN%2BKOR%2BLVA%2BLTU%2BMEX%2BNLD%2BNZL%2BNOR%2BPOL%2BPRT%2BSVN%2BESP%2BSWE%2BTUR%2BGBR%2BUSA%2BG7%2BG20%2BEA19%2BEU27%2BOECD%2BOECD%2BOECD%2BOECD%2BAES%2BEMES%2BIPAC.A.HD\\_POP\\_EXP.PT\\_POP.W\\_LT\\_2...&ly\[rw\]=REF\\_AREA&ly\[cl\]=TIME\\_PERIOD&to\[TIME\\_PERIOD\]=false&vw=tb](https://data-explorer.oecd.org/vis?tm=exposure%20to%20extreme%20temperature&pg=0&snb=3&df[ds]=dsDisseminateFinalDMZ&df[id]=DSD_ECH%40EXT_TEMP&df[ag]=OECD.ENV.EPI&df[vs]=1.1&pd=2010%2C&dq=CHE%2BSVK%2BLUX%2BHUN%2BCZE%2BAUT%2BAUS%2BBEL%2BCAN%2BCHL%2BCOL%2BCRI%2BDNK%2BEST%2BFIN%2BFRA%2BDEU%2BGRC%2BISL%2BIRL%2BISR%2BITA%2BJPN%2BKOR%2BLVA%2BLTU%2BMEX%2BNLD%2BNZL%2BNOR%2BPOL%2BPRT%2BSVN%2BESP%2BSWE%2BTUR%2BGBR%2BUSA%2BG7%2BG20%2BEA19%2BEU27%2BOECD%2BOECD%2BOECD%2BOECD%2BAES%2BEMES%2BIPAC.A.HD_POP_EXP.PT_POP.W_LT_2...&ly[rw]=REF_AREA&ly[cl]=TIME_PERIOD&to[TIME_PERIOD]=false&vw=tb).

## 10. Safety

Safety is about freedom from harm, whether that harm comes in the form of crime, conflict, violence, terrorism, oppression, accidents or natural disasters.

### 10.1 Homicides

**Indicator and unit of measurement:** Death due to assault, age-standardised rate, per 100 000 population

**Type of indicator:** Country average and horizontal inequality (data by sex)

**Definition:** Homicides refer to deaths due to assault (rate per 100 000 population). Data come from civil registration systems, compiled by national authorities, and collated by the World Health Organisation (WHO). Only medically certified causes of death are included.

**Source:** *OECD Causes of mortality (database)*, [https://data-explorer.oecd.org/vis?df\[ds\]=dsDisseminateFinalDMZ&df\[id\]=DSD\\_HEALTH\\_STAT%40DF\\_COM&df\[ag\]=OECD.EL.S.HD&df\[vs\]=1.0&pd=2015%2C&dq=.A..DT\\_10P5HB....CICDHOCD.STANDARD....&ly\[rw\]=REF\\_AREA&ly\[cl\]=TIME\\_PERIOD&ly\[rs\]=DEATH\\_CAUSE%2CSEX&to\[TIME\\_PERIOD\]=false](https://data-explorer.oecd.org/vis?df[ds]=dsDisseminateFinalDMZ&df[id]=DSD_HEALTH_STAT%40DF_COM&df[ag]=OECD.EL.S.HD&df[vs]=1.0&pd=2015%2C&dq=.A..DT_10P5HB....CICDHOCD.STANDARD....&ly[rw]=REF_AREA&ly[cl]=TIME_PERIOD&ly[rs]=DEATH_CAUSE%2CSEX&to[TIME_PERIOD]=false).

### 10.2 Feeling safe at night

**Indicator and unit of measurement:** Percentage of people declaring that they feel safe when walking alone at night in the city or area where they live

**Type of indicator:** Country average, deprivation and horizontal inequality (data by sex, education and age [young=15-29 years, middle-aged=30-49 years, and old=50+ years])

**Definition:** Feelings safe at night is measured by the percentage of people answering "yes" to a (yes/no) question: "Do you feel safe walking alone at night in the city or area where you live?". The source for these data is the Gallup

World Poll, which samples around 1 000 people per country, per year. The sample is ex ante designed to be nationally representative of the population aged 15 or over (including rural areas).

Due to the small sample size, data are pooled as follows:

- for the country average and data by sex: 3-year pooled averages (from 2006 to 2019, resulting in five data points: 2008-10, 2011-13, 2014-16, 2017-19, 2020-22) and 2-year pooled averages (from 2006 to 2007 and from 2023 to 2024, resulting in 2 data points: 2006-07 and 2023-24);
- for data by age: 7-year pooled averages (from 2011 to 2024, resulting in 2 data points: 2011-17 and 2018-24) and a 5-year pooled average for 2006-10;
- for data by education attainment: 5-year pooled averages (from 2010 to 2023, resulting in three data points: 2010-14, 2015-19 and 2020-24) and a 4-year pooled average for 2006-09.

**Deprivation** in feeling safe at night refers to the percentage of people answering "no" to the (yes/no) question mentioned above.

**Source:** Gallup World Poll, <https://gallup.com/analytics/232838/world-poll.aspx>.

### 10.3 Road deaths

**Indicator and unit of measurement:** Road deaths, rate per 100 000 population

**Type of indicator:** Country average

**Definition:** Road deaths (rate per 100 000 population) refers to persons killed immediately or dying within 30 days because of a road accident, excluding suicides.

**Source:** International Traffic Safety Data and Analysis Group (IRTAD) (database), <https://itf-oecd.org/irtad-road-safety-database>.

## 11. Subjective Well-being

Subjective Well-being is about good mental states, and how people experience their lives.

### 11.1 Life satisfaction

**Indicator and unit of measurement:** Mean values on an 11-point scale, with responses ranging from 0 (not at all satisfied) to 10 (fully satisfied)

**Type of indicator:** Country average, deprivation, vertical and horizontal inequality (data by sex, education and age [young=16-29 years, middle-aged=30-49 years, and old=50+ years])

**Definition:** Life satisfaction is measured through survey questions concerning overall satisfaction with life. Averages refer to mean scores. Consistent with the OECD Guidelines on Measuring Subjective Well-being, the question format typically used in OECD countries is: "Overall, how satisfied are you with your life as a whole these days?", with a response scale ranging from 0 to 10, anchored by 0 ("not at all satisfied") and 10 ("completely satisfied"). Despite progress in harmonisation, there are minor differences in the question wording across OECD countries, such as the scale anchors used (e.g. "very dissatisfied" to "very satisfied" in Canada; "completely dissatisfied" and "completely



satisfied" in New Zealand) as well as more substantial methodological differences (e.g. identification of the scale midpoint, 5, as "neutral" in Korea). Differences in the population sampled also limit comparability. In the majority of OECD countries, data refer to the population 16 years and older, with minor variations in Australia, Canada, Colombia and New Zealand (where data refer to those aged 15 and older), Mexico (those aged 18 and older) and Korea (those aged 19 and older from 2020. Until 2019, the age range was significantly narrow: 19-69 years).

**Deprivation** refers to the percentage of the population reporting a life satisfaction of 4 or below.

**Vertical inequality** refers to the ratio of life satisfaction scores of the top 20% (i.e. the quintile with the highest scores in life satisfaction) relative to the bottom 20% (i.e. the quintile with the lowest scores in life satisfaction).

**Source:** *European Union Statistics on Income and Living Conditions (EU-SILC) (database)*, <https://ec.europa.eu/eurostat/web/income-andliving-conditions>; and estimates provided by National Statistical Offices.

### 11.2 Negative affect balance

**Indicator and unit of measurement:** Percentage of population reporting more negative than positive feelings and states in a typical day

**Type of indicator:** Deprivation and horizontal inequality (data by sex, education and age [young=15-29 years, middle-aged=30-49 years and old=50+])

**Definition:** Negative affect balance is measured through a battery of items, to which respondents indicate "yes" or "no" to having felt a lot of each emotion or state on the previous day. The negative items considered here relate to anger, sadness and worry, and the positive affect items to enjoyment, feeling well-rested and laughing or smiling. The indicator refers to the percentage of respondents who report more negative than positive feelings or states on the previous day. Data are sourced from the Gallup World Poll, which samples around 1 000 people per country, each year. The sample is ex ante designed to be nationally representative of the population aged 15 and over (including rural areas); the sample data are weighted to the population using weights supplied by Gallup.

Due to the small sample size, data are pooled as follows:

- for the country average and data by sex: 3-year pooled averages (from 2006 to 2019, resulting in five data points: 2008-10, 2011-13, 2014-16, 2017-19, 2020-22) and 2-year pooled averages (from 2006 to 2007 and from 2023 to 2024, resulting in 2 data points: 2006-07 and 2023-24);
- for data by age: 7-year pooled averages (from 2011 to 2024, resulting in 2 data points: 2011-17 and 2018-24) and a 5-year pooled average for 2006-10;
- for data by education attainment: 5-year pooled averages (from 2010 to 2023, resulting in three data points: 2010-14, 2015-19 and 2020-24) and a 4-year pooled average for 2006-09.

**Source:** *Gallup World Poll*, <https://gallup.com/analytics/232838/world-poll.aspx>.

### 11.3 Pain

**Indicator and unit of measurement:** Percentage of population reporting experiencing a lot of physical pain the previous day

**Type of indicator:** Deprivation and horizontal inequality (data by sex, education and age [young=15-29 years, middle-aged=30-49 years and old=50+])

**Definition:** The indicator refers to the percentage of people answering "yes" to a (yes/no) question: "Did you experience the following feelings during a lot of the day yesterday? How about physical pain?". The source is the

Gallup World Poll, which samples around 1 000 people per country, per year. The sample is ex ante designed to be nationally representative of the population aged 15 or over (including rural areas).

Due to the small sample size, data are pooled as follows:

- for the country average and data by sex: 3-year pooled averages (from 2006 to 2019, resulting in five data points: 2008-10, 2011-13, 2014-16, 2017-19) and 2-year pooled averages (from 2006 to 2007 and from 2020 to 2023, resulting in 3 data points: 2006-07, 2020-21 and 2022-23);
- for data by age: 7-year pooled averages (from 2006 to 2023, resulting in 2 data points: 2010-16 and 2017-23) and a 4-year pooled average for 2006-09;
- for data by education attainment: 5-year pooled averages (from 2006 to 2023, resulting in three data points: 2009-13, 2014-18 and 2019-23) and a 3-year pooled average for 2006-08.

**Source:** Gallup World Poll, <https://gallup.com/analytics/232838/world-poll.aspx>.

## 12. Natural Capital

Natural Capital consists of naturally occurring assets and ecosystems, from tradable items such as minerals and timber through to oceans and the atmosphere. The scope of Natural Capital is vast: indicators selected for this chapter represent a small headline set of all the possible stocks, flows, and risk and resilience factors of relevance.

### 12.1 Natural and semi-natural land cover

**Indicator and unit of measurement:** Natural and semi-natural vegetated land cover (tree-covered area, grassland, wetland, shrubland and sparse vegetation) as a percentage of total land area

**Type of indicator:** Stock

**Definition:** Natural and semi-natural land cover is defined as the percentage of total land area composed of tree cover, grassland, wetland, shrubland and sparse vegetation.

**Source:** OECD Land cover and land cover change (database), [https://data-explorer.oecd.org/vis?fs\[0\]=Topic%2C1%7CEnvironment%23ENV%23%7CLand%20and%20forest%23ENV\\_FOR%23&pg=0&fc=Topic&bp=true&snb=3&vw=tb&df\[ds\]=dsDisseminateFinalDMZ&df\[id\]=DSD\\_LAND%40DF\\_LAND\\_COVER&df\[ag\]=OECD.ENV.EPI&df\[vs\]=1.0&pd=2000%2C2020&dq=AUT%2BAUS%2BBEL%2BCAN%2BCHL%2BCOL%2BCRI%2BCZE%2BDNK%2BEST%2BFIN%2BFRA%2BDEU%2BGRC%2BHUN%2BISL%2BIRL%2BISR%2BITA%2BJPN%2BKOR%2BLVA%2BLTU%2BLUX%2BMEX%2BNLD%2BNZL%2BNOR%2BPOL%2BPRT%2BSVK%2BSVN%2BESP%2BSWE%2BCHE%2BTUR%2BGBR%2BUSA%2BG7%2BG20%2BEA20%2BEU27\\_2020%2BOECD%2BOECD%2BOECD%2BOECD%2BAES%2BEMES%2BIPAC%2BW%2BA9.A5..PT\\_LAR%2BPT\\_LDNTR\\_SNTR\\_BP.&ly\[rw\]=REF\\_AREA%2CUNIT\\_MEASURE&ly\[cl\]=TIME\\_PERIOD&ly\[rs\]=MEASURE&to\[TIME\\_PERIOD\]=false](https://data-explorer.oecd.org/vis?fs[0]=Topic%2C1%7CEnvironment%23ENV%23%7CLand%20and%20forest%23ENV_FOR%23&pg=0&fc=Topic&bp=true&snb=3&vw=tb&df[ds]=dsDisseminateFinalDMZ&df[id]=DSD_LAND%40DF_LAND_COVER&df[ag]=OECD.ENV.EPI&df[vs]=1.0&pd=2000%2C2020&dq=AUT%2BAUS%2BBEL%2BCAN%2BCHL%2BCOL%2BCRI%2BCZE%2BDNK%2BEST%2BFIN%2BFRA%2BDEU%2BGRC%2BHUN%2BISL%2BIRL%2BISR%2BITA%2BJPN%2BKOR%2BLVA%2BLTU%2BLUX%2BMEX%2BNLD%2BNZL%2BNOR%2BPOL%2BPRT%2BSVK%2BSVN%2BESP%2BSWE%2BCHE%2BTUR%2BGBR%2BUSA%2BG7%2BG20%2BEA20%2BEU27_2020%2BOECD%2BOECD%2BOECD%2BOECD%2BAES%2BEMES%2BIPAC%2BW%2BA9.A5..PT_LAR%2BPT_LDNTR_SNTR_BP.&ly[rw]=REF_AREA%2CUNIT_MEASURE&ly[cl]=TIME_PERIOD&ly[rs]=MEASURE&to[TIME_PERIOD]=false).

### 12.2 Loss of natural and semi-natural land cover

**Indicator and unit of measurement:** Percentage of loss of natural and semi-natural land cover

**Type of indicator:** Stock

**Definition:** Loss of natural and semi-natural vegetated land is the percentage of tree cover, grassland, wetland, shrubland and sparse vegetation converted to (from) any other land cover type (e.g. agricultural, built-up area). The denominator used is the “stock” of natural and semi-natural land at the start of the reference period.

**Source:** *OECD Land cover and land cover change (database)*, [https://data-explorer.oecd.org/vis?fs\[0\]=Topic%2C1%7CEnvironment%23ENV%23%7CLand%20and%20forest%23ENV\\_FOR%23&pg=0&fc=Topic&bp=true&snb=3&vw=tb&df\[ds\]=dsDisseminateFinalDMZ&df\[id\]=DSD\\_LAND%40DF\\_LAND\\_COVER&df\[ag\]=OECD.ENV.EPI&df\[vs\]=1.0&pd=2000%2C2020&dq=AUT%2BAUS%2BBEL%2BCAN%2BCHL%2BCOL%2BCRI%2BCZE%2BDNK%2BEST%2BFIN%2BFRA%2BDEU%2BGRC%2BHUN%2BISL%2BIRL%2BISR%2BITA%2BJPN%2BKOR%2BLVA%2BLTU%2BLUX%2BMEX%2BNLD%2BNZL%2BNOR%2BPOL%2BPRT%2BSVK%2BSVN%2BESP%2BSWE%2BCHE%2BTUR%2BGBR%2BUSA%2BG7%2BG20%2BEA20%2BEU27\\_2020%2BOECD%2BOECD%2BOECD%2BAES%2BEMES%2BIPAC%2BW%2BA9.A5..PT\\_LAR%2BPT\\_LND\\_NTR\\_SNTR\\_BP.&ly\[rw\]=REF\\_AREA%2CUNIT\\_MEASURE&ly\[cl\]=TIME\\_PERIOD&ly\[rs\]=MEASURE&to\[TIME\\_PERIOD\]=false](https://data-explorer.oecd.org/vis?fs[0]=Topic%2C1%7CEnvironment%23ENV%23%7CLand%20and%20forest%23ENV_FOR%23&pg=0&fc=Topic&bp=true&snb=3&vw=tb&df[ds]=dsDisseminateFinalDMZ&df[id]=DSD_LAND%40DF_LAND_COVER&df[ag]=OECD.ENV.EPI&df[vs]=1.0&pd=2000%2C2020&dq=AUT%2BAUS%2BBEL%2BCAN%2BCHL%2BCOL%2BCRI%2BCZE%2BDNK%2BEST%2BFIN%2BFRA%2BDEU%2BGRC%2BHUN%2BISL%2BIRL%2BISR%2BITA%2BJPN%2BKOR%2BLVA%2BLTU%2BLUX%2BMEX%2BNLD%2BNZL%2BNOR%2BPOL%2BPRT%2BSVK%2BSVN%2BESP%2BSWE%2BCHE%2BTUR%2BGBR%2BUSA%2BG7%2BG20%2BEA20%2BEU27_2020%2BOECD%2BOECD%2BOECD%2BAES%2BEMES%2BIPAC%2BW%2BA9.A5..PT_LAR%2BPT_LND_NTR_SNTR_BP.&ly[rw]=REF_AREA%2CUNIT_MEASURE&ly[cl]=TIME_PERIOD&ly[rs]=MEASURE&to[TIME_PERIOD]=false).

### 12.3 Gain of natural and semi-natural land cover

**Indicator and unit of measurement:** Percentage of the gain of natural and semi-natural land cover

**Type of indicator:** Stock

**Definition:** Gain of natural and semi-natural vegetated land is the percentage of tree cover, grassland, wetland, shrubland and sparse vegetation converted to (from) any other land cover type (e.g. agricultural, built-up area). The denominator used is the “stock” of natural and semi-natural land at the start of the reference period.

**Source:** *OECD Land cover and land cover change (database)*, [https://data-explorer.oecd.org/vis?fs\[0\]=Topic%2C1%7CEnvironment%23ENV%23%7CLand%20and%20forest%23ENV\\_FOR%23&pg=0&fc=Topic&bp=true&snb=3&vw=tb&df\[ds\]=dsDisseminateFinalDMZ&df\[id\]=DSD\\_LAND%40DF\\_LAND\\_COVER&df\[ag\]=OECD.ENV.EPI&df\[vs\]=1.0&pd=2000%2C2020&dq=AUT%2BAUS%2BBEL%2BCAN%2BCHL%2BCOL%2BCRI%2BCZE%2BDNK%2BEST%2BFIN%2BFRA%2BDEU%2BGRC%2BHUN%2BISL%2BIRL%2BISR%2BITA%2BJPN%2BKOR%2BLVA%2BLTU%2BLUX%2BMEX%2BNLD%2BNZL%2BNOR%2BPOL%2BPRT%2BSVK%2BSVN%2BESP%2BSWE%2BCHE%2BTUR%2BGBR%2BUSA%2BG7%2BG20%2BEA20%2BEU27\\_2020%2BOECD%2BOECD%2BOECD%2BAES%2BEMES%2BIPAC%2BW%2BA9.A5..PT\\_LAR%2BPT\\_LND\\_NTR\\_SNTR\\_BP.&ly\[rw\]=REF\\_AREA%2CUNIT\\_MEASURE&ly\[cl\]=TIME\\_PERIOD&ly\[rs\]=MEASURE&to\[TIME\\_PERIOD\]=false](https://data-explorer.oecd.org/vis?fs[0]=Topic%2C1%7CEnvironment%23ENV%23%7CLand%20and%20forest%23ENV_FOR%23&pg=0&fc=Topic&bp=true&snb=3&vw=tb&df[ds]=dsDisseminateFinalDMZ&df[id]=DSD_LAND%40DF_LAND_COVER&df[ag]=OECD.ENV.EPI&df[vs]=1.0&pd=2000%2C2020&dq=AUT%2BAUS%2BBEL%2BCAN%2BCHL%2BCOL%2BCRI%2BCZE%2BDNK%2BEST%2BFIN%2BFRA%2BDEU%2BGRC%2BHUN%2BISL%2BIRL%2BISR%2BITA%2BJPN%2BKOR%2BLVA%2BLTU%2BLUX%2BMEX%2BNLD%2BNZL%2BNOR%2BPOL%2BPRT%2BSVK%2BSVN%2BESP%2BSWE%2BCHE%2BTUR%2BGBR%2BUSA%2BG7%2BG20%2BEA20%2BEU27_2020%2BOECD%2BOECD%2BOECD%2BAES%2BEMES%2BIPAC%2BW%2BA9.A5..PT_LAR%2BPT_LND_NTR_SNTR_BP.&ly[rw]=REF_AREA%2CUNIT_MEASURE&ly[cl]=TIME_PERIOD&ly[rs]=MEASURE&to[TIME_PERIOD]=false).

### 12.4 Intact forest landscapes

**Indicator and unit of measurement:** Intact forest landscapes, square kilometres

**Type of indicator:** Stock

**Definition:** Intact forest landscape (in square kilometres) refers to an unbroken expanse of natural ecosystem within the current forest extent, with no remotely detected signs of human activity, and large enough that all native biodiversity, including viable populations of wide-ranging species, could be maintained. These forests are defined as larger than 500 km<sup>2</sup> and wider than 10 km, and must be free of settlements or infrastructure and unaffected by industrial activity, agricultural clearing or other anthropogenic disturbance in the last 70 years. Treeless areas within these forests such as lakes, ice or patches of grassland are included. Identification of intact forest landscapes is based on a map of global forests, with all the forest patches that do not meet the criteria above excluded through visual identification of disturbance using satellite images and other sources of information like thematic maps (roads, settlements, etc.).

**Source:** *OECD Green Growth (database)*, [https://data-explorer.oecd.org/vis?tm=intact%20forest&pg=0&snb=2&vw=tb&df\[ds\]=dsDisseminateFinalDMZ&df\[id\]=DSD\\_GG%40DF\\_GREEN\\_GROWTH&df\[ag\]=OECD.ENV.EPI&df\[vs\]=1.1&dq=..FOR\\_IF\\_EXTENT.KM2.&pd=%2C&to\[TIME\\_PERIOD\]=false](https://data-explorer.oecd.org/vis?tm=intact%20forest&pg=0&snb=2&vw=tb&df[ds]=dsDisseminateFinalDMZ&df[id]=DSD_GG%40DF_GREEN_GROWTH&df[ag]=OECD.ENV.EPI&df[vs]=1.1&dq=..FOR_IF_EXTENT.KM2.&pd=%2C&to[TIME_PERIOD]=false).

### 12.5 Protected areas (terrestrial)

**Indicator and unit of measurement:** Percentage of total land that has been designated as protected

**Type of indicator:** Stock

**Definition:** Protected terrestrial areas refer to the share of total land that has been designated as protected using national, regional (e.g. the European Natura 2000 networks) or international frameworks (e.g. Wetlands of International Importance, known as Ramsar sites). They include strict natural reserves, wilderness areas, national parks, natural monuments, habitat or species management areas, protected landscapes or seascapes, and protected areas with sustainable use of natural resources.

**Source:** *OECD Protected areas (database)*, [https://data-explorer.oecd.org/vis?tm=protected%20areas&pg=0&snb=42&vw=tb&df\[ds\]=dsDisseminateFinalDMZ&df\[id\]=DSD\\_PA%40DF\\_PROT\\_AREA&df\[ag\]=OECD.ENV.EPI&df\[vs\]=1.0&pd=%2C&dq=.A.TERRESTRIAL.PT\\_LAR.ALL\\_INC\\_P.TCEO.CNTRY&ly\[rw\]=REF\\_AREA&ly\[cl\]=TIME\\_PERIOD&to\[TIME\\_PERIOD\]=false&lo=5&lom=LASTNPERIODS](https://data-explorer.oecd.org/vis?tm=protected%20areas&pg=0&snb=42&vw=tb&df[ds]=dsDisseminateFinalDMZ&df[id]=DSD_PA%40DF_PROT_AREA&df[ag]=OECD.ENV.EPI&df[vs]=1.0&pd=%2C&dq=.A.TERRESTRIAL.PT_LAR.ALL_INC_P.TCEO.CNTRY&ly[rw]=REF_AREA&ly[cl]=TIME_PERIOD&to[TIME_PERIOD]=false&lo=5&lom=LASTNPERIODS).

### 12.6 Protected areas (marine)

**Indicator and unit of measurement:** Percentage of total exclusive economic zones that have been designated as protected

**Type of indicator:** Stock

**Definition:** Protected marine areas refer to the share of total exclusive economic zones that have been designated as protected using national, regional (e.g. the European Natura 2000 networks) or international frameworks (e.g. Wetlands of International Importance, known as Ramsar sites). They include strict natural reserves, wilderness areas, national parks, natural monuments, habitat/species management areas, protected landscapes/ seascapes, and protected areas with sustainable use of natural resources.

**Source:** *OECD Protected areas (database)*, [https://data-explorer.oecd.org/vis?tm=protected%20areas&pg=0&snb=42&vw=tb&df\[ds\]=dsDisseminateFinalDMZ&df\[id\]=DSD\\_PA%40DF\\_PROT\\_AREA&df\[ag\]=OECD.ENV.EPI&df\[vs\]=1.0&pd=%2C&dq=.A.MARINE..ALL\\_INC\\_P.TCEO.CNTRY&ly\[rw\]=REF\\_AREA&ly\[cl\]=TIME\\_PERIOD&to\[TIME\\_PERIOD\]=false&lo=5&lom=LASTNPERIODS](https://data-explorer.oecd.org/vis?tm=protected%20areas&pg=0&snb=42&vw=tb&df[ds]=dsDisseminateFinalDMZ&df[id]=DSD_PA%40DF_PROT_AREA&df[ag]=OECD.ENV.EPI&df[vs]=1.0&pd=%2C&dq=.A.MARINE..ALL_INC_P.TCEO.CNTRY&ly[rw]=REF_AREA&ly[cl]=TIME_PERIOD&to[TIME_PERIOD]=false&lo=5&lom=LASTNPERIODS).

### 12.7 Red List Index of threatened species

**Indicator and unit of measurement:** Red List Index, where 1.0 = all species qualifying as "Least Concern", 0 = all species having gone extinct

**Type of indicator:** Risk factor

**Definition:** The Red List Index (drawn from the IUCN Red List of Threatened Species) shows trends in the overall extinction risk of species within a country. It is a combined indicator of extinction risk for birds, mammals, amphibians,

cycads and corals. A value of 1.0 implies that all species qualify as Least Concern (i.e. not expected to become extinct in the near future), while a value of 0 equates to all species having gone extinct.

**Source:** UNECE Sustainable Development Indicators, indicator 15.5.1, <https://w3.unece.org/SDG/en/Indicator?id=69>

## 12.8 Greenhouse gas emissions

**Indicator and unit of measurement:** Total greenhouse gas emissions from domestic production, excluding those from land use, land-use change and forestry (LULUCF), kilograms per capita, CO<sub>2</sub> equivalent, thousands

**Type of indicator:** Risk factors

**Definition:** Greenhouse gas emissions from domestic production are total per capita greenhouse gas emissions (GHG) from domestic production, excluding those from land use, land-use change and forestry (LULUCF), in tonnes per capita, CO<sub>2</sub> equivalent. This indicator concerns man-made emissions of six different gases: carbon dioxide (CO<sub>2</sub>, including emissions from energy use and industrial processes, e.g. cement production); methane (CH<sub>4</sub>, including methane emissions from solid waste, livestock, mining of hard coal and lignite, rice paddies, agriculture and leaks from natural gas pipelines); nitrous oxide (N<sub>2</sub>O); hydrofluorocarbons (HFCs); perfluorocarbons (PFCs); and sulphur hexafluoride (SF<sub>6</sub>). Emissions of each type of gas are weighted by their “warming potential” and expressed in tonnes per capita of CO<sub>2</sub> equivalent.

**Source:** OECD Air emissions - Greenhouse gas emissions Inventories (database), [https://data-explorer.oecd.org/vis?tm=greenhouse%20gases&pg=0&hc\[Pollutant\]=Greenhouse%20gases&snb=9&df\[ds\]=dsDisseminateFinalDMZ&df\[id\]=DSD\\_AIR\\_GHG%40DF\\_AIR\\_GHG&df\[ag\]=OECD.ENV.EPI&df\[vs\]=1.0&pd=%2C&dq=.A.GHG..T.KG.CO2E.PS&to\[TIME\\_PERIOD\]=false&ly\[cl\]=TIME\\_PERIOD&ly\[rw\]=REF\\_AREA&vw=tb](https://data-explorer.oecd.org/vis?tm=greenhouse%20gases&pg=0&hc[Pollutant]=Greenhouse%20gases&snb=9&df[ds]=dsDisseminateFinalDMZ&df[id]=DSD_AIR_GHG%40DF_AIR_GHG&df[ag]=OECD.ENV.EPI&df[vs]=1.0&pd=%2C&dq=.A.GHG..T.KG.CO2E.PS&to[TIME_PERIOD]=false&ly[cl]=TIME_PERIOD&ly[rw]=REF_AREA&vw=tb)

## 12.9 Carbon footprint

**Indicator and unit of measurement:** Carbon dioxide emissions embodied in domestic final demand, tonnes per capita

**Type of indicator:** Risk factor

**Definition:** Carbon footprint (tonnes per capita) is an estimate of the total per capita emissions of carbon dioxide (CO<sub>2</sub>) associated with domestic consumption, including both CO<sub>2</sub> emitted and consumed domestically and CO<sub>2</sub> emitted abroad and embodied in imports. Emissions embodied in the domestic consumption of a country increase global GHG concentrations even when there are no increases in emissions from domestic production.

**Source:** OECD Greenhouse Gas Emissions Footprints Indicators (2023 ed.) (database), [https://data-explorer.oecd.org/vis?tm=DF\\_ICIO\\_GHG\\_ORGN\\_2023&snb=5&vw=ov&df\[ds\]=dsDisseminateFinalDMZ&df\[id\]=DSD\\_ICIO\\_GHG\\_MAIN%40DF\\_ICIO\\_GHG\\_MAIN\\_2023&df\[ag\]=OECD.STI.PIE&df\[vs\]=1.0&dq=A.FD\\_GHG..T.T.CO2E.PS&pd=2004%2C&to\[TIME\\_PERIOD\]=false&ly\[rs\]=TIME\\_PERIOD&ly\[rw\]=REF\\_AREA](https://data-explorer.oecd.org/vis?tm=DF_ICIO_GHG_ORGN_2023&snb=5&vw=ov&df[ds]=dsDisseminateFinalDMZ&df[id]=DSD_ICIO_GHG_MAIN%40DF_ICIO_GHG_MAIN_2023&df[ag]=OECD.STI.PIE&df[vs]=1.0&dq=A.FD_GHG..T.T.CO2E.PS&pd=2004%2C&to[TIME_PERIOD]=false&ly[rs]=TIME_PERIOD&ly[rw]=REF_AREA)

## 12.10 Renewable energy

**Indicator and unit of measurement:** Renewable energy as a percentage of total primary energy supply

**Type of indicator:** Resilience factors

**Definition:** Renewable energy supply refers to the share of the total primary energy supply (TPES) from renewable sources. Renewables include hydro, geothermal, solar (thermal and PV), wind and tide/wave/ocean energy, as well

as renewables from the combustion of solid biomass, liquid biomass, biogas and renewable municipal waste. TPES comprises production, plus imports, less exports, less energy in international marine bunkers and international aviation bunkers, plus changes in energy stocks.

**Source:** OECD Green Growth (database), [https://data-explorer.oecd.org/vis?tm=renewable%20energy%20total%20primary%20energy%20supply&pg=0&snb=7&vw=tb&df\[ds\]=dsDisseminateFinalDMZ&df\[id\]=DSD\\_GG%40DF\\_GREEN\\_GROWTH&df\[ag\]=OECD.ENV.EPI&df\[vs\]=1.1&pd=2017%2C&dq=AUS%2BBEL%2BCAN%2BCHL%2BCOL%2BCRI%2BCZE%2BDNK%2BEST%2BFIN%2BAUT%2BFRA%2BDEU%2BGRC%2BHUN%2BISL%2BIRL%2BISR%2BITA%2BJPN%2BKOR%2BLVA%2BLTU%2BLUX%2BNLD%2BNZL%2BNOR%2BPOL%2BPRT%2BMEX%2BSVK%2BSVN%2BESP%2BSWE%2BCHE%2BTUR%2BGBR%2BUSA%2BOECD..RE\\_TPES.PT\\_SUP\\_NRG.&to\[TIME\\_PERIOD\]=false](https://data-explorer.oecd.org/vis?tm=renewable%20energy%20total%20primary%20energy%20supply&pg=0&snb=7&vw=tb&df[ds]=dsDisseminateFinalDMZ&df[id]=DSD_GG%40DF_GREEN_GROWTH&df[ag]=OECD.ENV.EPI&df[vs]=1.1&pd=2017%2C&dq=AUS%2BBEL%2BCAN%2BCHL%2BCOL%2BCRI%2BCZE%2BDNK%2BEST%2BFIN%2BAUT%2BFRA%2BDEU%2BGRC%2BHUN%2BISL%2BIRL%2BISR%2BITA%2BJPN%2BKOR%2BLVA%2BLTU%2BLUX%2BNLD%2BNZL%2BNOR%2BPOL%2BPRT%2BMEX%2BSVK%2BSVN%2BESP%2BSWE%2BCHE%2BTUR%2BGBR%2BUSA%2BOECD..RE_TPES.PT_SUP_NRG.&to[TIME_PERIOD]=false)

### 12.11 Soil nutrient balance

**Indicator and unit of measurement:** Nutrient surplus (nitrogen), kilograms per hectare of agricultural land

**Type of indicator:** Risk factor

**Definition:** Nitrogen balance (nitrogen surplus, kilograms per hectare of agricultural land) is calculated as the difference between the total quantity of nitrogen inputs entering an agricultural system (mainly fertilisers, livestock manure) and the quantity of nitrogen outputs leaving the system (mainly uptake of nutrients by crops and grassland). Gross nitrogen balances are expressed in kg of nutrient surplus (when positive) or deficit (when negative) per hectare of agricultural land. This indicator is used as a proxy to reveal the status of environmental pressures, such as declining soil fertility (in the case of a nutrient deficit) or the risk of polluting soil, water and air (in the case of a nutrient surplus).

**Source:** OECD Nutrients balances (database), [https://data-explorer.oecd.org/vis?tm=Soil%20nutrient%20balance&pg=0&snb=3&vw=tb&df%5bds%5d=dsDisseminateFinalDMZ&df%5bid%5d=DSD\\_AGR\\_ENV%40DF\\_NB&df%5bag%5d=OECD.TAD.ARP&df%5bvs%5d=1.0&pd=2012%2C&dq=.A.B0\\_H...NITROGEN.&ly%5brw%5d=REF\\_AREA&ly%5bcl%5d=TIME\\_PERIOD&to%5bTIME\\_PERIOD%5d=false](https://data-explorer.oecd.org/vis?tm=Soil%20nutrient%20balance&pg=0&snb=3&vw=tb&df%5bds%5d=dsDisseminateFinalDMZ&df%5bid%5d=DSD_AGR_ENV%40DF_NB&df%5bag%5d=OECD.TAD.ARP&df%5bvs%5d=1.0&pd=2012%2C&dq=.A.B0_H...NITROGEN.&ly%5brw%5d=REF_AREA&ly%5bcl%5d=TIME_PERIOD&to%5bTIME_PERIOD%5d=false)

### 12.12 Water stress (internal)

**Indicator and unit of measurement:** Gross abstractions as a percentage of internal resources

**Type of indicator:** Risk factor

**Definition:** Water stress (internal) is expressed as the ratio of total gross abstractions of freshwater as a percentage of total internal renewable freshwater resources (precipitation net of evapotranspiration). Water stress is categorised as either “low” (less than 10%), implying no major stress on the available resources; “moderate” (10-20%), when water availability is becoming a constraint on development and significant investment is needed to provide adequate supplies; “medium-high” (20-40%), requiring management of both supply and demand, and a need to resolve conflicts among competing uses of water; and “high” (more than 40%), indicating serious scarcity and (usually) unsustainable water use, which can become a limiting factor in social and economic development. Note that data for the United Kingdom include freshwater abstractions only in England and Wales.

**Source:** OECD Freshwater - abstractions (database), [https://data-explorer.oecd.org/vis?tm=freshwater%20abstractions&pg=0&snb=6&df\[ds\]=dsDisseminateFinalDMZ&df\[id\]=DSD\\_WATER\\_ABSTRACT%40DF\\_WATER\\_ABSTRACT&df\[ag\]=OECD.ENV.EPI&df\[vs\]=1.0&pd=%2C&dq=.A.TOTAL.P.T\\_RSC\\_REN\\_INT.TOTAL\\_ABSTRACT&ly\[cl\]=TIME\\_PERIOD&ly\[rw\]=COMBINED\\_UNIT\\_MEASURE%2CREF\\_AREA&to\[TIME\\_PERIOD\]=false](https://data-explorer.oecd.org/vis?tm=freshwater%20abstractions&pg=0&snb=6&df[ds]=dsDisseminateFinalDMZ&df[id]=DSD_WATER_ABSTRACT%40DF_WATER_ABSTRACT&df[ag]=OECD.ENV.EPI&df[vs]=1.0&pd=%2C&dq=.A.TOTAL.P.T_RSC_REN_INT.TOTAL_ABSTRACT&ly[cl]=TIME_PERIOD&ly[rw]=COMBINED_UNIT_MEASURE%2CREF_AREA&to[TIME_PERIOD]=false)



### 12.13 Water stress (total)

**Indicator and unit of measurement:** Gross abstractions as a percentage of total renewable resources

**Type of indicator:** Risk factor

**Definition:** Water stress (total) is expressed as the ratio of total gross abstractions of freshwater as a percentage of total available renewable freshwater resources (including inflows from neighbouring countries). Water stress is categorised as either “low” (less than 10%), implying no major stress on the available resources; “moderate” (10-20%), when water availability is becoming a constraint on development and significant investment is needed to provide adequate supplies; “medium-high” (20-40%), requiring management of both supply and demand, and a need to resolve conflicts among competing uses of water; and “high” (more than 40%), indicating serious scarcity and (usually) unsustainable water use, which can become a limiting factor in social and economic development. Note that data for the United Kingdom include freshwater abstractions only in England and Wales.

**Source:** OECD Freshwater - abstractions (database), [https://data-explorer.oecd.org/vis?tm=freshwater%20abstractions&pg=0&snb=6&df\[ds\]=dsDisseminateFinalDMZ&df\[id\]=DSD\\_WATER\\_ABSTRACT%40DF\\_WATER\\_ABSTRACT&df\[ag\]=OECD.ENV.EPI&df\[vs\]=1.0&pd=%2C&dq=.A.TOTAL.P.T.RSC.REN.WAT.TOTAL\\_ABSTRACT&to\[TIME\\_PERIOD\]=false](https://data-explorer.oecd.org/vis?tm=freshwater%20abstractions&pg=0&snb=6&df[ds]=dsDisseminateFinalDMZ&df[id]=DSD_WATER_ABSTRACT%40DF_WATER_ABSTRACT&df[ag]=OECD.ENV.EPI&df[vs]=1.0&pd=%2C&dq=.A.TOTAL.P.T.RSC.REN.WAT.TOTAL_ABSTRACT&to[TIME_PERIOD]=false)

### 12.14 Material footprint

**Indicator and unit of measurement:** Used raw material extracted to meet the economy's final demand per capita, tonnes per capita

**Type of indicator:** Flow

**Definition:** Material footprint is expressed in tonnes per capita, and refers to the global allocation of used raw material extracted to meet the final demand of an economy, thus including materials used in the production of imported products. These data refer to material resources, i.e. materials originating from natural resources that form the material basis of the economy: metals (ferrous, non-ferrous) non-metallic minerals (construction minerals, industrial minerals), biomass (wood, food) and fossil energy carriers.

**Source:** OECD Material flow accounts (database), [https://data-explorer.oecd.org/vis?pg=0&fs\[0\]=Topic%2C1%7CEnvironment%23ENV%23%7CMaterial%20resources%23ENV\\_MAT%23&fc=Topic&snb=1&vw=tb&df\[ds\]=dsDisseminateFinalDMZ&df\[id\]=DSD\\_MATERIAL\\_RESOURCES%40DF\\_MATERIAL\\_RESOURCES&df\[ag\]=OECD.ENV.EPI&df\[vs\]=1.0&pd=2010%2C&dq=.A.MF.T.PS.TOT&ly\[rw\]=REF\\_AREA&ly\[c\]=TIME\\_PERIOD&to\[TIME\\_PERIOD\]=false&bp=true](https://data-explorer.oecd.org/vis?pg=0&fs[0]=Topic%2C1%7CEnvironment%23ENV%23%7CMaterial%20resources%23ENV_MAT%23&fc=Topic&snb=1&vw=tb&df[ds]=dsDisseminateFinalDMZ&df[id]=DSD_MATERIAL_RESOURCES%40DF_MATERIAL_RESOURCES&df[ag]=OECD.ENV.EPI&df[vs]=1.0&pd=2010%2C&dq=.A.MF.T.PS.TOT&ly[rw]=REF_AREA&ly[c]=TIME_PERIOD&to[TIME_PERIOD]=false&bp=true)

### 12.15 Recycling rate

**Indicator and unit of measurement:** Municipal waste recycled or composted as a percentage of all treated waste

**Type of indicator:** Resilience factors

**Definition:** Municipal waste material recovery refers to waste recycled or composted, expressed as a percentage of all waste treated. Recycling is defined as any reprocessing of material in a production process that diverts it from the waste stream, except reuse as fuel. It includes reprocessing both as the same type of product and for different purposes. Direct recycling within industrial plants at the place of generation is excluded. Composting is defined as a

biological process that submits biodegradable waste to anaerobic or aerobic decomposition and that results in a product that is recovered. Waste treated includes recycling, composting, incineration and landfill disposal.

**Source:** *OECD Waste - Municipal waste: generation and treatment (database)*, [https://data-explorer.oecd.org/vis?tm=recycling&pg=0&snb=9&vw=tb&df\[ds\]=dsDisseminateFinalDMZ&df\[id\]=DSD\\_MUNW%40DF\\_MUNW&df\[ag\]=OECD.ENV.EPI&df\[vs\]=1.0&pd=2010%2C&dg=.A.COMPOST%2BRECycling.PT\\_WST\\_TR&ly\[rw\]=REF\\_AREA&ly\[cl\]=TIME\\_PERIOD&to\[TIME\\_PERIOD\]=false](https://data-explorer.oecd.org/vis?tm=recycling&pg=0&snb=9&vw=tb&df[ds]=dsDisseminateFinalDMZ&df[id]=DSD_MUNW%40DF_MUNW&df[ag]=OECD.ENV.EPI&df[vs]=1.0&pd=2010%2C&dg=.A.COMPOST%2BRECycling.PT_WST_TR&ly[rw]=REF_AREA&ly[cl]=TIME_PERIOD&to[TIME_PERIOD]=false)

## 13. Human Capital

Human Capital refers to the skills, competencies (including education and tacit knowledge) and health status of individuals. Many researchers and institutions are currently using definitions of human capital that emphasise its value to economic production and income generation, particularly regarding the importance of the quality of labour. Beyond technical skills, the concept of human capital has since been expanded to include aspects of motivation and behaviour, as well as the physical, emotional and mental health of individuals. Both health and education are also outcomes of intrinsic value in their own right, as well as contributing extensively to the production of other well-being outcomes.

### 13.1 Educational attainment among young adults

**Indicator and unit of measurement:** Percentage of people aged 25-34 who have attained at least an upper secondary education

**Type of indicator:** Stock

**Definition:** Educational attainment among young adults is measured as the percentage of people aged 25 to 34 that have attained at least upper secondary education. Upper secondary education uses the International Standard Classification of Education (ISCED) definition, of education at or above level 3. This includes both general programmes geared towards preparation for higher education, as well as vocational education and training (VET) programmes.

**Source:** *OECD Adults' educational attainment distribution, by age group and gender (database)*, [https://data-explorer.oecd.org/vis?tm=DSD\\_EAG\\_LSO\\_EA%40DF\\_LSO\\_NEAC\\_DISTR\\_EA&pg=0&snb=29&df\[ds\]=dsDisseminateFinalDMZ&df\[id\]=DSD\\_EAG\\_LSO\\_EA%40DF\\_LSO\\_NEAC\\_DISTR\\_EA&df\[ag\]=OECD.EDU.IMEP&df\[vs\]=1.0&dg=.T.Y25T34.ISCED11A\\_3\\_4%2BISCED11A\\_5T8.....OBS...A&pd=2010%2C&to\[TIME\\_PERIOD\]=true&ly\[cl\]=ATTAINMENT\\_LEV&ly\[rs\]=TIME\\_PERIOD&ly\[rw\]=REF\\_AREA](https://data-explorer.oecd.org/vis?tm=DSD_EAG_LSO_EA%40DF_LSO_NEAC_DISTR_EA&pg=0&snb=29&df[ds]=dsDisseminateFinalDMZ&df[id]=DSD_EAG_LSO_EA%40DF_LSO_NEAC_DISTR_EA&df[ag]=OECD.EDU.IMEP&df[vs]=1.0&dg=.T.Y25T34.ISCED11A_3_4%2BISCED11A_5T8.....OBS...A&pd=2010%2C&to[TIME_PERIOD]=true&ly[cl]=ATTAINMENT_LEV&ly[rs]=TIME_PERIOD&ly[rw]=REF_AREA); and estimates provided by National Statistical Offices.

### 13.2 Labour underutilisation

**Indicator and unit of measurement:** Percentage of unemployed, discouraged (persons not in the labour force who did not actively look for work during the past four weeks but who wish and are available to work) and underemployed (full-time workers working less than usual during the survey reference week for economic reasons and part-time workers who wanted but could not find full-time work) workers in the total labour force

**Type of indicator:** Risk factor

**Definition:** The labour underutilisation rate (the percentage of unemployed, discouraged workers and underemployed workers in the total labour force) aims to capture the permanent effects of labour market slack in reducing the skills

and learning opportunities available to people. It includes in the numerator the unemployed, the discouraged (i.e. persons not in the labour force who did not actively look for work during the past four weeks but who wish and are available to work) and underemployed workers (i.e. full-time workers working less than usual during the survey reference week for economic reasons and part-time workers who wanted but could not find full-time work), expressed as a ratio of the labour force. It therefore provides a wider view of joblessness and unrealised potential, beyond unemployment rates.

**Source:** *OECD Household indicators dashboard – indicator view (database)*, [https://data-explorer.oecd.org/vis?tm=labour%20underutilisation&pg=0&snb=3&vw=tb&dfds\]=dsDisseminateFinalDMZ&dfid\]=DSD HHDASH%40DF HHDASH INDIC&dfag\]=OECD.SDD.NAD&dfvs\]=1.0&pd=2010%2C&dq=A..LAB UR6.&ly\[rw\]=REF AREA&ly\[cl\]=TIME PERIOD&to\[TIME PERIOD\]=false](https://data-explorer.oecd.org/vis?tm=labour%20underutilisation&pg=0&snb=3&vw=tb&dfds]=dsDisseminateFinalDMZ&dfid]=DSD HHDASH%40DF HHDASH INDIC&dfag]=OECD.SDD.NAD&dfvs]=1.0&pd=2010%2C&dq=A..LAB UR6.&ly[rw]=REF AREA&ly[cl]=TIME PERIOD&to[TIME PERIOD]=false)

### 13.3 Premature mortality

**Indicator and unit of measurement:** Potential years of life lost due to a range of medical conditions and fatal accidents, years of potential life lost per 100 000 population (age standardised)

**Type of indicator:** Country average

**Definition:** Premature mortality (years of potential life lost due to a range of medical conditions and fatal accidents per 100 000 population) refers to deaths occurring before the age of 75. The indicator is calculated by subtracting the selected age of premature mortality (75 years in OECD calculations) from the actual age of death of each person, then multiplying this by the number of deaths at each age, and finally adding up the numbers across all age groups to come up with an overall total. Implicit in this approach is that deaths occurring at a younger age are weighted more heavily than deaths at an older age (e.g. in the case of an infant dying in its first year of life, PYLL is  $75 - 1$ , i.e. 74, while for someone dying at 74, PYLL is  $75 - 74$ , i.e. 1). The indicator takes into account differences in population structure by age across OECD countries (by applying the OECD population structure) to avoid reporting higher scores for countries that have the same age-specific death rates as others but a younger population structure (i.e., data are age standardised).

**Source:** *OECD Potential years of life lost (database)*, [https://data-explorer.oecd.org/vis?tm=years%20of%20life%20lost&pg=0&snb=6&vw=tb&dfds\]=dsDisseminateFinalDMZ&dfid\]=DSD HEALTH STAT%40DF PYLL&dfag\]=OECD.ELS.HD&dfvs\]=1.0&pd=2010%2C&dq=A..... T.....&ly\[rw\]=REF AREA&ly\[cl\]=TIME PERIOD&ly\[rs\]=SEX&to\[TIME PERIOD\]=false](https://data-explorer.oecd.org/vis?tm=years%20of%20life%20lost&pg=0&snb=6&vw=tb&dfds]=dsDisseminateFinalDMZ&dfid]=DSD HEALTH STAT%40DF PYLL&dfag]=OECD.ELS.HD&dfvs]=1.0&pd=2010%2C&dq=A..... T.....&ly[rw]=REF AREA&ly[cl]=TIME PERIOD&ly[rs]=SEX&to[TIME PERIOD]=false)

### 13.4 Smoking prevalence

**Indicator and unit of measurement:** Percentage of people aged 15 or over who report smoking every day

**Type of indicator:** Risk factor

**Definition:** Smoking prevalence is defined as the percentage of the population aged 15 or over that smokes tobacco daily. This indicator takes into account neither the quantity of tobacco smoked, beyond one cigarette per day nor the exposure to second-hand smoke; it also excludes the use of smokeless tobacco products (such as chewing tobacco).

**Source:** *OECD Tobacco consumption (database)*, [https://data-explorer.oecd.org/vis?tm=smoking&pg=0&snb=11&vw=tb&dfds\]=dsDisseminateFinalDMZ&dfid\]=DSD HEALTH LVNG%40DF HEALTH LVNG TC&dfag\]=OECD.ELS.HD&dfvs\]=1.0&pd=2010%2C&dq=A.SP DS.Y GE15...&ly\[rw\]=REF AREA&ly\[cl\]=TIME PERIOD&ly\[rs\]=SEX%2CAGE&to\[TIME PERIOD\]=false](https://data-explorer.oecd.org/vis?tm=smoking&pg=0&snb=11&vw=tb&dfds]=dsDisseminateFinalDMZ&dfid]=DSD HEALTH LVNG%40DF HEALTH LVNG TC&dfag]=OECD.ELS.HD&dfvs]=1.0&pd=2010%2C&dq=A.SP DS.Y GE15...&ly[rw]=REF AREA&ly[cl]=TIME PERIOD&ly[rs]=SEX%2CAGE&to[TIME PERIOD]=false)

### 13.5 Obesity prevalence

**Indicator and unit of measurement:** Percentage of the population aged 15 or older who are obese, either self-reported or measured through health interviews

**Type of indicator:** Risk factor

**Definition:** This indicator captures the percentage of the population aged 15 or older who are obese, either self-reported or measured through health interviews. Self-reported values are used for Austria, Bulgaria, Croatia, Denmark, Greece, Iceland, Italy, Lithuania, Luxembourg, the Netherlands, Norway, Poland, Romania, Slovenia, Spain, Sweden, and Switzerland and values are measured through health interviews for all other countries. Obesity is defined using the body mass index (BMI), a single number that takes into account an individual's height and weight. Based on WHO standards, an adult with a BMI of 30 or above is considered obese. While BMI is the most commonly-used metric for defining obesity, it is not without limits (e.g. different ethnic groups may have equivalent levels of health risks at different BMI values).

**Source:** OECD Risk factors for health (database), [https://data-explorer.oecd.org/vis?tm=obese&pg=0&snb=9&vw=tb&df\[ds\]=dsDisseminateFinalDMZ&df\[id\]=DSD\\_HEALTH\\_LVNG%40DF\\_HEALTH\\_LVNG&df\[ag\]=OECD.ELS.HD&df\[vs\]=1.0&pd=2010%2C&dq=.A.SP\\_OBS...PT\\_POP.&ly\[rw\]=REF\\_AREA&ly\[cl\]=TIME\\_PERIOD&ly\[rs\]=SEX&to\[TIME\\_PERIOD\]=false](https://data-explorer.oecd.org/vis?tm=obese&pg=0&snb=9&vw=tb&df[ds]=dsDisseminateFinalDMZ&df[id]=DSD_HEALTH_LVNG%40DF_HEALTH_LVNG&df[ag]=OECD.ELS.HD&df[vs]=1.0&pd=2010%2C&dq=.A.SP_OBS...PT_POP.&ly[rw]=REF_AREA&ly[cl]=TIME_PERIOD&ly[rs]=SEX&to[TIME_PERIOD]=false)

## 14. Social capital

Social Capital is about the social norms, shared values and institutional arrangements that foster co-operation among population groups.

### 14.1 Trust in others

**Indicator and unit of measurement:** Mean average, on a scale from 0 (you do not trust any other person) to 10 (most people can be trusted)

**Type of indicator:** Stock

**Definition:** Mean score in interpersonal trust on a scale from 0 to 10. Trust in others is based on a variant of the survey question: "And now a general question about trust. In general, how much do you trust most people?" Respondents answer using an 11-point scale, ranging from 0 ("Not at all") to 10 ("Completely"). Comparable data for the population aged 16 or above is available for European countries via Eurostat's EU-SILC ad hoc modules on well-being and for New Zealand via Stats NZ's General Social Survey.

**Source:** European Union Statistics on Income and Living Conditions (EU-SILC) (database), <https://ec.europa.eu/eurostat/web/income-and-living-conditions>; and estimates provided by National Statistical Offices.

### 14.2 Trust in the police

**Indicator and unit of measurement:** Mean score on a scale from 0 (no trust at all) to 10 (complete trust)

**Type of indicator:** Stock

**Definition:** Mean score in trust in the police on a scale from 0 to 10. Trust in the police is based on a variant of the survey question: “How much do you personally trust each of the following institutions...the police”, which respondents answer using an 11-point scale, ranging from 0 (“Not at all”) to 10 (“Completely”). Comparable data for the population aged 16 or above is available for European countries via Eurostat’s EU-SILC ad hoc modules on well-being and via Stats NZ’s General Social Survey.

**Source:** *European Union Statistics on Income and Living Conditions (EU-SILC) (database)*, <https://ec.europa.eu/eurostat/web/income-andliving-conditions>; and estimates provided by National Statistical Offices.

### 14.3 Trust in government

**Indicator and unit of measurement:** Percentage of the population responding “yes” to a question about confidence in the national government

**Type of indicator:** Stock and horizontal inequality (data by sex, education and age [young=15-29 years, middle-aged=30-49 years and old=50+])

**Definition:** Trust in government is based on the survey question: “In this country, do you have confidence in each of the following, or not? ... How about national government?” The data shown reflect the percentage of respondents answering “yes” (the other response categories being “no”, and “don’t know”). Information is sourced via the annual Gallup World Poll, which samples around 1 000 people per country each year. The sample is ex ante designed to be nationally representative of the population aged 15 and over (including rural areas).

Due to the small sample size, data are pooled as follows:

- for the country average and data by sex: 3-year pooled averages (from 2006 to 2019, resulting in five data points: 2008-10, 2011-13, 2014-16, 2017-19, 2020-22) and 2-year pooled averages (from 2006 to 2007 and from 2023 to 2024, resulting in 2 data points: 2006-07 and 2023-24);
- for data by age: 7-year pooled averages (from 2011 to 2024, resulting in 2 data points: 2011-17 and 2018-24) and a 5-year pooled average for 2006-10;
- for data by education attainment: 5-year pooled averages (from 2010 to 2023, resulting in three data points: 2010-14, 2015-19 and 2020-24) and a 4-year pooled average for 2006-09.

**Source:** Gallup World Poll, <https://gallup.com/analytics/232838/world-poll.aspx>.

### 14.4 Government stakeholder engagement

**Indicator and unit of measurement:** Government stakeholder engagement when developing primary laws and subordinate regulations, from 0 (no engagement) to 4 (maximum engagement) scale

**Type of indicator:** Resilience factor

**Definition:** Government stakeholder engagement measures whether countries have adopted stakeholder engagement practices and require them to be consulted when developing new regulations. Data comes from responses to the OECD’s Indicators of Regulatory Policy and Governance questionnaire, which asks government officials about four aspects of stakeholder engagement (systematic adoption of stakeholder engagement requirements, consultation methodology, transparency, oversight and quality control). For both primary laws and subordinate regulations, a composite indicator with a maximum score of four (maximum score of one for each aspect) is computed - the indicator reported here is the simple average of the primary laws and subordinate regulations composite indicators.

**Source:** *OECD Stakeholder engagement, RIA, and Ex post evaluation indexes - Government at a glance indicators, 2023 edition (database)*, [https://data-explorer.oecd.org/vis?tm=stakeholder%20engagement&pg=0&snb=7&vw=tb&df\[ds\]=dsDisseminateFinalDMZ&df\[id\]=DSD\\_GOV\\_REG%40DF\\_GOV\\_REG\\_2023&df\[ag\]=OECD.GOV.GIP&df\[vs\]=1.0&dq=A..SA...S%2BP.&pd=2014%2C&to\[TIME\\_PERIOD\]=false](https://data-explorer.oecd.org/vis?tm=stakeholder%20engagement&pg=0&snb=7&vw=tb&df[ds]=dsDisseminateFinalDMZ&df[id]=DSD_GOV_REG%40DF_GOV_REG_2023&df[ag]=OECD.GOV.GIP&df[vs]=1.0&dq=A..SA...S%2BP.&pd=2014%2C&to[TIME_PERIOD]=false).

#### 14.5 Gender parity in politics

**Indicator and unit of measurement:** Percentage of women in the national lower or single houses of parliament

**Type of indicator:** Resilience factor

**Definition:** Gender parity in politics refers to the percentage of women among elected members of the national lower or single houses of parliament.

**Source:** *OECD Public employment and representation - Government at a glance indicators, Yearly updates (database)*, [https://data-explorer.oecd.org/vis?fs\[0\]=Topic%2C1%7CGovernment%23GOV%23%7CPublic%20employment%20and%20management%23GOV\\_PEM%23&pg=0&fc=Topic&bp=true&snb=2&vw=tb&df\[ds\]=dsDisseminateFinalDMZ&df\[id\]=DSD\\_GOV%40DF\\_GOV\\_EMPPS\\_REP\\_YU&df\[ag\]=OECD.GOV.GIP&df\[vs\]=1.0&pd=2007%2C&dq=A.AUS%2BBEL%2BCAN%2BCHL%2BCOL%2BCRI%2BCZE%2BDNK%2BEST%2BFIN%2BFRA%2BDEU%2BGRC%2BHUN%2BISL%2BIRL%2BISR%2BITA%2BJPN%2BKOR%2BLVA%2BLTU%2BLUX%2BMEX%2BNLD%2BNZL%2BNOR%2BPOL%2BPRT%2BSVK%2BSVN%2BESP%2BSWE%2BCHE%2BTUR%2BGBR%2BUSA%2BEUOECD%2BOECD\\_REP%2BAUT.EMPW\\_PARL....&ly\[c\]=TIME\\_PERIOD&ly\[rs\]=REF\\_AREA&to\[TIME\\_PERIOD\]=false](https://data-explorer.oecd.org/vis?fs[0]=Topic%2C1%7CGovernment%23GOV%23%7CPublic%20employment%20and%20management%23GOV_PEM%23&pg=0&fc=Topic&bp=true&snb=2&vw=tb&df[ds]=dsDisseminateFinalDMZ&df[id]=DSD_GOV%40DF_GOV_EMPPS_REP_YU&df[ag]=OECD.GOV.GIP&df[vs]=1.0&pd=2007%2C&dq=A.AUS%2BBEL%2BCAN%2BCHL%2BCOL%2BCRI%2BCZE%2BDNK%2BEST%2BFIN%2BFRA%2BDEU%2BGRC%2BHUN%2BISL%2BIRL%2BISR%2BITA%2BJPN%2BKOR%2BLVA%2BLTU%2BLUX%2BMEX%2BNLD%2BNZL%2BNOR%2BPOL%2BPRT%2BSVK%2BSVN%2BESP%2BSWE%2BCHE%2BTUR%2BGBR%2BUSA%2BEUOECD%2BOECD_REP%2BAUT.EMPW_PARL....&ly[c]=TIME_PERIOD&ly[rs]=REF_AREA&to[TIME_PERIOD]=false).

#### 14.6 Corruption

**Indicator and unit of measurement:** Corruption Perception Index score on a scale of 0 (highly corrupt) to 100 (very clean)

**Type of indicator:** Risk factor

**Definition:** Corruption is measured via Transparency International's annual Corruption Perception Index (CPI), which ranks countries based on how corrupt a country's public sector is perceived to be by experts and business executives. The CPI is a composite index that combines information from 13 surveys and expert assessments from 12 independent institutions specialising in governance and business climate analysis to arrive at a score from 0 (highly corrupt) to 100 (very clean).

**Source:** *Transparency International Corruption Perception Index 2023*, <https://www.transparency.org/en/cpi/2023>

#### 14.7 Volunteering through organisations

**Indicator and unit of measurement:** Percentage of the population who declared having volunteered through an organisation in the past month

**Type of indicator:** Flow and horizontal inequality (data by sex, education and age [young=15-29 years, middle-aged=30-49 years and old=50+])

**Definition:** Volunteering through organisations refers to the percentage of the population answering "yes" to the (yes/no) question: "Have you done any of the following in the past month? How about volunteered your time at an organization?"



The source for these data is the Gallup World Poll, which samples around 1 000 people per country, per year. The sample is ex ante designed to be nationally representative of the population aged 15 or over (including rural areas).

Due to the small sample size, data are pooled as follows:

- for the country average and data by sex: 3-year pooled averages (from 2006 to 2019, resulting in five data points: 2008-10, 2011-13, 2014-16, 2017-19, 2020-22) and 2-year pooled averages (from 2006 to 2007 and from 2023 to 2024, resulting in 2 data points: 2006-07 and 2023-24);
- for data by age: 7-year pooled averages (from 2011 to 2024, resulting in 2 data points: 2011-17 and 2018-24) and a 5-year pooled average for 2006-10;
- for data by education attainment: 5-year pooled averages (from 2010 to 2023, resulting in three data points: 2010-14, 2015-19 and 2020-24) and a 4-year pooled average for 2006-09.

**Source:** Gallup World Poll, <https://gallup.com/analytics/232838/world-poll.aspx>.

## 15. Economic Capital

Economic Capital consists of produced and financial capital. Produced capital refers to man-made tangible assets such as roads, railways, buildings and machinery; intellectual property such as Research and Development expenditure, computer software and art works; and inventories of final and intermediate goods. Financial capital includes financial assets such as currency and deposits, equity, securities and derivatives, and liabilities in the form of loans and debt securities.

### 15.1 Produced fixed assets

**Indicator and unit of measurement:** Produced fixed assets, USD at 2020 PPPs, per capita

**Type of indicator:** Stock

**Definition:** Produced fixed assets are expressed in USD per capita at 2020 PPPs. This indicator refers to the value of a country's stock of produced economic assets, including dwellings, buildings, structures, machinery and equipment; cultivated assets such as livestock for breeding and vineyards; intangible assets such as computer software and entertainment, literary or artistic originals; and inventories. It reflects the reduction in their value due to physical deterioration, normal obsolescence or normal accidental damage.

**Source:** OECD calculations based on *OECD National accounts*'

*Annual balance sheets for non-financial assets* (database), [https://data-explorer.oecd.org/vis?pg=0&bp=true&snb=24&tm=Annual%20balance%20sheets%20for%20non-financial%20assets&vw=tb&df\[ds\]=dsDisseminateFinalDMZ&df\[id\]=DSD\\_NASEC10%40DF\\_TABLE9B&df\[ag\]=OEC.D.SDD.NAD&df\[vs\]=1.1&pd=2010%2C&dq=A...S1....N117N%2BN11N....V..&ly\[rw\]=INSTR\\_ASSET&ly\[cl\]=TIME\\_PERIOD&ly\[rs\]=REF\\_AREA&to\[TIME\\_PERIOD\]=false](https://data-explorer.oecd.org/vis?pg=0&bp=true&snb=24&tm=Annual%20balance%20sheets%20for%20non-financial%20assets&vw=tb&df[ds]=dsDisseminateFinalDMZ&df[id]=DSD_NASEC10%40DF_TABLE9B&df[ag]=OEC.D.SDD.NAD&df[vs]=1.1&pd=2010%2C&dq=A...S1....N117N%2BN11N....V..&ly[rw]=INSTR_ASSET&ly[cl]=TIME_PERIOD&ly[rs]=REF_AREA&to[TIME_PERIOD]=false),

*Annual GDP and components - expenditure approach* (database), [https://data-explorer.oecd.org/vis?fs\[0\]=Topic%2C1%7CEconomy%23ECO%23%7CNational%20accounts%23ECO\\_NAD%23&pg=0&fc=Topic&bp=true&snb=138&df\[ds\]=dsDisseminateFinalDMZ&df\[id\]=DSD\\_NAMAIN10%40DF\\_TABLE1\\_EXPENDITURE&df\[ag\]=OEC.D.SDD.NAD&df\[vs\]=1.0&pd=2010%2C&dq=A...B1GQ.....DR..&ly\[cl\]=TIME\\_PERIOD&ly\[rs\]=REF\\_AREA&to\[TIME\\_PERIOD\]=false](https://data-explorer.oecd.org/vis?fs[0]=Topic%2C1%7CEconomy%23ECO%23%7CNational%20accounts%23ECO_NAD%23&pg=0&fc=Topic&bp=true&snb=138&df[ds]=dsDisseminateFinalDMZ&df[id]=DSD_NAMAIN10%40DF_TABLE1_EXPENDITURE&df[ag]=OEC.D.SDD.NAD&df[vs]=1.0&pd=2010%2C&dq=A...B1GQ.....DR..&ly[cl]=TIME_PERIOD&ly[rs]=REF_AREA&to[TIME_PERIOD]=false),

*Annual Purchasing Power Parities and exchange rates* (database), [https://data-explorer.oecd.org/vis?pg=0&bp=true&snb=9&tm=Annual%20Purchasing%20Power%20Parities%20and%20exchange%20rates&df\[ds\]=dsDisseminateFinalDMZ&df\[id\]=DSD\\_NAMAIN10%40DF\\_TABLE4&df\[ag\]=OECD.SDD.NAD&df\[vs\]=1.0&pd=2010%2C&dq=A.AUS%2BAUT%2BBEL%2BCAN%2BCHL%2BCOL%2BCRI%2BCZE%2BDNK%2BEST%2BFIN%2BFRA%2BDEU%2BGRC%2BHUN%2BISL%2BIRL%2BISR%2BITA%2BJPN%2BKOR%2BLVA%2BLTU%2BLUX%2BMEX%2BNLD%2BNZL%2BNOR%2BPOL%2BPRT%2BSVK%2BSVN%2BESP%2BSWE%2BCHL%2BTUR%2BGBR%2BUSA...PPP\\_B1GQ.....&ly\[rw\]=REF\\_AREA&ly\[cl\]=TIME\\_PERIOD&to\[TIME\\_PERIOD\]=false](https://data-explorer.oecd.org/vis?pg=0&bp=true&snb=9&tm=Annual%20Purchasing%20Power%20Parities%20and%20exchange%20rates&df[ds]=dsDisseminateFinalDMZ&df[id]=DSD_NAMAIN10%40DF_TABLE4&df[ag]=OECD.SDD.NAD&df[vs]=1.0&pd=2010%2C&dq=A.AUS%2BAUT%2BBEL%2BCAN%2BCHL%2BCOL%2BCRI%2BCZE%2BDNK%2BEST%2BFIN%2BFRA%2BDEU%2BGRC%2BHUN%2BISL%2BIRL%2BISR%2BITA%2BJPN%2BKOR%2BLVA%2BLTU%2BLUX%2BMEX%2BNLD%2BNZL%2BNOR%2BPOL%2BPRT%2BSVK%2BSVN%2BESP%2BSWE%2BCHL%2BTUR%2BGBR%2BUSA...PPP_B1GQ.....&ly[rw]=REF_AREA&ly[cl]=TIME_PERIOD&to[TIME_PERIOD]=false) and

*Annual population and employment, national concept* (database), [https://data-explorer.oecd.org/vis?tm=population&pg=0&snb=188&df\[ds\]=dsDisseminateFinalDMZ&df\[id\]=DSD\\_NAMAIN10%40DF\\_TABLE3\\_POP\\_EMPNC&df\[ag\]=OECD.SDD.NAD&df\[vs\]=1.0&pd=2010%2C&dq=A.AUS%2BAUT%2BBEL%2BCAN%2BCHL%2BCOL%2BCRI%2BCZE%2BDNK%2BEST%2BFIN%2BFRA%2BDEU%2BGRC%2BHUN%2BISL%2BIRL%2BISR%2BITA%2BJPN%2BKOR%2BLVA%2BLTU%2BLUX%2BMEX%2BNLD%2BNZL%2BNOR%2BPOL%2BPRT%2BSVK%2BSVN%2BESP%2BSWE%2BCHL%2BTUR%2BGBR%2BUSA...POP.....&ly\[rw\]=REF\\_AREA&ly\[cl\]=TIME\\_PERIOD&to\[TIME\\_PERIOD\]=false](https://data-explorer.oecd.org/vis?tm=population&pg=0&snb=188&df[ds]=dsDisseminateFinalDMZ&df[id]=DSD_NAMAIN10%40DF_TABLE3_POP_EMPNC&df[ag]=OECD.SDD.NAD&df[vs]=1.0&pd=2010%2C&dq=A.AUS%2BAUT%2BBEL%2BCAN%2BCHL%2BCOL%2BCRI%2BCZE%2BDNK%2BEST%2BFIN%2BFRA%2BDEU%2BGRC%2BHUN%2BISL%2BIRL%2BISR%2BITA%2BJPN%2BKOR%2BLVA%2BLTU%2BLUX%2BMEX%2BNLD%2BNZL%2BNOR%2BPOL%2BPRT%2BSVK%2BSVN%2BESP%2BSWE%2BCHL%2BTUR%2BGBR%2BUSA...POP.....&ly[rw]=REF_AREA&ly[cl]=TIME_PERIOD&to[TIME_PERIOD]=false)

### 15.2 Intellectual property assets

**Indicator and unit of measurement:** Intellectual property assets, USD at 2020 PPPs, per capita

**Type of indicator:** Stock

**Definition:** Intellectual property assets are expressed in USD per capita at 2020 PPPs. The indicator refers to a country's knowledge capital (e.g. research and development, software and databases, mineral exploration and evaluation, and entertainment, artistic and literary originals). ICT equipment is included in Korea, while ownership costs are excluded in Australia, and artistic originals are excluded in Canada.

**Source:** OECD calculations based on *OECD National accounts*'

*Annual balance sheets for non-financial assets* (database), [https://data-explorer.oecd.org/vis?pg=0&bp=true&snb=24&tm=Annual%20balance%20sheets%20for%20non-financial%20assets&vw=tb&df\[ds\]=dsDisseminateFinalDMZ&df\[id\]=DSD\\_NASEC10%40DF\\_TABLE9B&df\[ag\]=OECD.SDD.NAD&df\[vs\]=1.1&pd=2010%2C&dq=A.S1....N117N%2BN11N....V..&ly\[rw\]=INSTR\\_ASSET&ly\[cl\]=TIME\\_PERIOD&ly\[rs\]=REF\\_AREA&to\[TIME\\_PERIOD\]=false](https://data-explorer.oecd.org/vis?pg=0&bp=true&snb=24&tm=Annual%20balance%20sheets%20for%20non-financial%20assets&vw=tb&df[ds]=dsDisseminateFinalDMZ&df[id]=DSD_NASEC10%40DF_TABLE9B&df[ag]=OECD.SDD.NAD&df[vs]=1.1&pd=2010%2C&dq=A.S1....N117N%2BN11N....V..&ly[rw]=INSTR_ASSET&ly[cl]=TIME_PERIOD&ly[rs]=REF_AREA&to[TIME_PERIOD]=false),

*Annual GDP and components - expenditure approach* (database), [https://data-explorer.oecd.org/vis?fs\[0\]=Topic%2C1%7CEconomy%23ECO%23%7CNational%20accounts%23ECO\\_NAD%23&pg=0&fc=Topic&bp=true&snb=138&df\[ds\]=dsDisseminateFinalDMZ&df\[id\]=DSD\\_NAMAIN10%40DF\\_TABLE1\\_EXPENDITURE&df\[ag\]=OECD.SDD.NAD&df\[vs\]=1.0&pd=2010%2C&dq=A...B1GQ.....DR..&ly\[cl\]=TIME\\_PERIOD&ly\[rs\]=REF\\_AREA&to\[TIME\\_PERIOD\]=false](https://data-explorer.oecd.org/vis?fs[0]=Topic%2C1%7CEconomy%23ECO%23%7CNational%20accounts%23ECO_NAD%23&pg=0&fc=Topic&bp=true&snb=138&df[ds]=dsDisseminateFinalDMZ&df[id]=DSD_NAMAIN10%40DF_TABLE1_EXPENDITURE&df[ag]=OECD.SDD.NAD&df[vs]=1.0&pd=2010%2C&dq=A...B1GQ.....DR..&ly[cl]=TIME_PERIOD&ly[rs]=REF_AREA&to[TIME_PERIOD]=false),

*Annual Purchasing Power Parities and exchange rates* (database), [https://data-explorer.oecd.org/vis?pg=0&bp=true&snb=9&tm=Annual%20Purchasing%20Power%20Parities%20and%20exchange%20rates&df\[ds\]=dsDisseminateFinalDMZ&df\[id\]=DSD\\_NAMAIN10%40DF\\_TABLE4&df\[ag\]=OECD.SDD.NAD&df\[vs\]=1.0&pd=2010%2C&dq=A.AUS%2BAUT%2BBEL%2BCAN%2BCHL%2BCOL%2BCRI%2BCZE%2BDNK%2BEST%2BFIN%2BFRA%2BDEU%2BGRC%2BHUN%2BISL%2BIRL%2BISR%2BITA%2BJPN%2BKOR%2BLVA%2BLTU%2BLUX%2BMEX%2BNLD%2BNZL%2BNOR%2BPOL%2BPRT%2BSVK%2BSVN%2BESP%2BSWE%2BCHL%2BTUR%2BGBR%2BUSA...PPP\\_B1GQ.....&ly\[rw\]=REF\\_AREA&ly\[cl\]=TIME\\_PERIOD&to\[TIME\\_PERIOD\]=false](https://data-explorer.oecd.org/vis?pg=0&bp=true&snb=9&tm=Annual%20Purchasing%20Power%20Parities%20and%20exchange%20rates&df[ds]=dsDisseminateFinalDMZ&df[id]=DSD_NAMAIN10%40DF_TABLE4&df[ag]=OECD.SDD.NAD&df[vs]=1.0&pd=2010%2C&dq=A.AUS%2BAUT%2BBEL%2BCAN%2BCHL%2BCOL%2BCRI%2BCZE%2BDNK%2BEST%2BFIN%2BFRA%2BDEU%2BGRC%2BHUN%2BISL%2BIRL%2BISR%2BITA%2BJPN%2BKOR%2BLVA%2BLTU%2BLUX%2BMEX%2BNLD%2BNZL%2BNOR%2BPOL%2BPRT%2BSVK%2BSVN%2BESP%2BSWE%2BCHL%2BTUR%2BGBR%2BUSA...PPP_B1GQ.....&ly[rw]=REF_AREA&ly[cl]=TIME_PERIOD&to[TIME_PERIOD]=false) and

*Annual population and employment, national concept* (database), [https://data-explorer.oecd.org/vis?tm=population&pg=0&snb=188&df\[ds\]=dsDisseminateFinalDMZ&df\[id\]=DSD\\_NAMAIN10%40](https://data-explorer.oecd.org/vis?tm=population&pg=0&snb=188&df[ds]=dsDisseminateFinalDMZ&df[id]=DSD_NAMAIN10%40)

[DF\\_TABLE3\\_POP\\_EMPNC&df\[ag\]=OECD.SDD.NAD&df\[vs\]=1.0&pd=2010%2C&dq=A.AUS%2BAUT%2BBEL%2BCAN%2BCHL%2BCOL%2BCRI%2BCZE%2BDNK%2BEST%2BFIN%2BFRA%2BDEU%2BGRC%2BHUN%2BISL%2BIRL%2BISR%2BITA%2BJPN%2BKOR%2BLVA%2BLTU%2BLUX%2BMEX%2BNLD%2BNZL%2BNOR%2BPOL%2BPRT%2BSVK%2BSVN%2BESP%2BSWE%2BCHE%2BTUR%2BGBR%2BUSA...POP.....&ly\[rw\]=REF\\_AR\\_EA&ly\[cl\]=TIME\\_PERIOD&to\[TIME\\_PERIOD\]=false](#)

### 15.3 Gross fixed capital formation

**Indicator and unit of measurement:** Gross fixed capital formation, annual growth rates

**Type of indicator:** Flow

**Definition:** Gross fixed capital formation refers to the investment in both produced fixed assets (such as dwellings, buildings and other structures, transport equipment, other machinery and equipment, cultivated assets) and intangible fixed assets (such as intellectual property, computer software and art works) within a country. Data are expressed as annual growth rates at constant prices.

**Source:** OECD National accounts' Annual GDP and components - expenditure approach (database), [https://data-explorer.oecd.org/vis?pg=0&fs\[0\]=Topic%2C1%7CEconomy%23ECO%23%7CNational%20accounts%23ECO\\_NAD%23&fc=Topic&bp=true&snb=138&df\[ds\]=dsDisseminateFinalDMZ&df\[id\]=DSD\\_NAMAIN10%40DF\\_TABLE1\\_EXPENDITURE&df\[ag\]=OECD.SDD.NAD&df\[vs\]=1.0&pd=2010%2C&dq=A....P51G....PC...&ly\[rw\]=TRANSACTION&ly\[cl\]=TIME\\_PERIOD&ly\[rs\]=REF\\_AREA&to\[TIME\\_PERIOD\]=false](https://data-explorer.oecd.org/vis?pg=0&fs[0]=Topic%2C1%7CEconomy%23ECO%23%7CNational%20accounts%23ECO_NAD%23&fc=Topic&bp=true&snb=138&df[ds]=dsDisseminateFinalDMZ&df[id]=DSD_NAMAIN10%40DF_TABLE1_EXPENDITURE&df[ag]=OECD.SDD.NAD&df[vs]=1.0&pd=2010%2C&dq=A....P51G....PC...&ly[rw]=TRANSACTION&ly[cl]=TIME_PERIOD&ly[rs]=REF_AREA&to[TIME_PERIOD]=false)

### 15.4 Investment in R&D

**Indicator and unit of measurement:** Investment in R&D, percentage of GDP

**Type of indicator:** Flow

**Definition:** Investment in Research and Development, expressed as percentage of GDP, refers to the expenditure undertaken by resident producers on creative work carried out on a systematic basis in order to increase the stock of knowledge, including knowledge of man, culture and society, and the use of this stock of knowledge to devise new applications.

**Source:** OECD calculations based on OECD National accounts'

*Annual capital formation by economic activity* (database), [https://data-explorer.oecd.org/vis?tm=Annual%20capital%20formation%20by%20economic%20activity&pg=0&snb=34&df\[ds\]=dsDisseminateFinalDMZ&df\[id\]=DSD\\_NAMAIN10%40DF\\_TABLE8&df\[ag\]=OECD.SDD.NAD&df\[vs\]=1.0&pd=%2C&dq=A.....N1171G..T...V..&to\[TIME\\_PERIOD\]=false](https://data-explorer.oecd.org/vis?tm=Annual%20capital%20formation%20by%20economic%20activity&pg=0&snb=34&df[ds]=dsDisseminateFinalDMZ&df[id]=DSD_NAMAIN10%40DF_TABLE8&df[ag]=OECD.SDD.NAD&df[vs]=1.0&pd=%2C&dq=A.....N1171G..T...V..&to[TIME_PERIOD]=false) and

*Annual GDP and components - expenditure approach* (database), [https://data-explorer.oecd.org/vis?fs\[0\]=Topic%2C1%7CEconomy%23ECO%23%7CNational%20accounts%23ECO\\_NAD%23&pg=0&fc=Topic&bp=true&snb=138&df\[ds\]=dsDisseminateFinalDMZ&df\[id\]=DSD\\_NAMAIN10%40DF\\_TABLE1\\_EXPENDITURE&df\[ag\]=OECD.SDD.NAD&df\[vs\]=1.0&pd=2010%2C&dq=A..S1..B1GQ....XDC.V..&to\[TIME\\_PERIOD\]=false](https://data-explorer.oecd.org/vis?fs[0]=Topic%2C1%7CEconomy%23ECO%23%7CNational%20accounts%23ECO_NAD%23&pg=0&fc=Topic&bp=true&snb=138&df[ds]=dsDisseminateFinalDMZ&df[id]=DSD_NAMAIN10%40DF_TABLE1_EXPENDITURE&df[ag]=OECD.SDD.NAD&df[vs]=1.0&pd=2010%2C&dq=A..S1..B1GQ....XDC.V..&to[TIME_PERIOD]=false)

### 15.5 Financial net wealth of total economy

**Indicator and unit of measurement:** Financial net worth of total economy, USD per capita at current PPPs

**Type of indicator:** Stock

**Definition:** Financial net worth of the total economy, expressed in USD per capita at current PPPs, captures the net foreign asset position of a country with respect to the rest of the world. The financial assets include currency, deposits, debt securities, loans, equity and investment fund shares/units, financial derivatives and employment stock options, and other accounts receivable.

**Source:** OECD calculation based on *OECD National accounts*'

*Annual Financial Balance Sheets (stocks), non-consolidated (database)*, [https://data-explorer.oecd.org/vis?tm=Annual%20Financial%20Balance%20Sheets%20%28stocks%29%2C%20non-consolidated&pg=0&snb=23&dfds\]=dsDisseminateFinalDMZ&dfid\]=DSD\\_NASEC20%40DF\\_T720R\\_A&dfag\]=OECD.SDD.NAD&dfvs\]=1.1&pd=2010%2C&dq=A....S1.....BF90..XDC.....&ly\[cl\]=TIME\\_PERIOD&ly\[rs\]=REF\\_AREA&to\[TIME\\_PERIOD\]=false](https://data-explorer.oecd.org/vis?tm=Annual%20Financial%20Balance%20Sheets%20%28stocks%29%2C%20non-consolidated&pg=0&snb=23&dfds]=dsDisseminateFinalDMZ&dfid]=DSD_NASEC20%40DF_T720R_A&dfag]=OECD.SDD.NAD&dfvs]=1.1&pd=2010%2C&dq=A....S1.....BF90..XDC.....&ly[cl]=TIME_PERIOD&ly[rs]=REF_AREA&to[TIME_PERIOD]=false) and

*Annual Financial Balance Sheets (stocks), consolidated (database)*, [https://data-explorer.oecd.org/vis?tm=DSD\\_NASEC20%40DF\\_T710R\\_A&pg=0&snb=24&vw=tb&dfds\]=dsDisseminateFinalDMZ&dfid\]=DSD\\_NASEC20%40DF\\_T710R\\_A&dfag\]=OECD.SDD.NAD&dfvs\]=1.1&dq=A....S1.....BF90..XDC.....&pd=2010%2C&to\[TIME\\_PERIOD\]=false&ly\[cl\]=TIME\\_PERIOD&ly\[rs\]=REF\\_AREA%2CCOMBINED\\_UNIT&lb=nm](https://data-explorer.oecd.org/vis?tm=DSD_NASEC20%40DF_T710R_A&pg=0&snb=24&vw=tb&dfds]=dsDisseminateFinalDMZ&dfid]=DSD_NASEC20%40DF_T710R_A&dfag]=OECD.SDD.NAD&dfvs]=1.1&dq=A....S1.....BF90..XDC.....&pd=2010%2C&to[TIME_PERIOD]=false&ly[cl]=TIME_PERIOD&ly[rs]=REF_AREA%2CCOMBINED_UNIT&lb=nm) and

*Annual Purchasing Power Parities and exchange rates (database)*, [https://data-explorer.oecd.org/vis?pg=0&bp=true&snb=9&tm=Annual%20Purchasing%20Power%20Parities%20and%20exchange%20rates&dfds\]=dsDisseminateFinalDMZ&dfid\]=DSD\\_NAMAIN10%40DF\\_TABLE4&dfag\]=OECD.SDD.NAD&dfvs\]=1.0&pd=2010%2C&dq=A.AUS%2BAUT%2BBEL%2BCAN%2BCHL%2BCOL%2BCRI%2BCZE%2BDNK%2BEST%2BFIN%2BFRA%2BDEU%2BGRC%2BHUN%2BISL%2BIRL%2BISR%2BITA%2BJPN%2BKOR%2BLVA%2BLTU%2BLUX%2BMEX%2BNLD%2BNZL%2BNOR%2BPOL%2BPRT%2BSVK%2BSVN%2BESP%2BSWE%2BCHL%2BTUR%2BGBR%2BUSA...PPP\\_B1GQ.....&ly\[rw\]=REF\\_AREA&ly\[cl\]=TIME\\_PERIOD&to\[TIME\\_PERIOD\]=false](https://data-explorer.oecd.org/vis?pg=0&bp=true&snb=9&tm=Annual%20Purchasing%20Power%20Parities%20and%20exchange%20rates&dfds]=dsDisseminateFinalDMZ&dfid]=DSD_NAMAIN10%40DF_TABLE4&dfag]=OECD.SDD.NAD&dfvs]=1.0&pd=2010%2C&dq=A.AUS%2BAUT%2BBEL%2BCAN%2BCHL%2BCOL%2BCRI%2BCZE%2BDNK%2BEST%2BFIN%2BFRA%2BDEU%2BGRC%2BHUN%2BISL%2BIRL%2BISR%2BITA%2BJPN%2BKOR%2BLVA%2BLTU%2BLUX%2BMEX%2BNLD%2BNZL%2BNOR%2BPOL%2BPRT%2BSVK%2BSVN%2BESP%2BSWE%2BCHL%2BTUR%2BGBR%2BUSA...PPP_B1GQ.....&ly[rw]=REF_AREA&ly[cl]=TIME_PERIOD&to[TIME_PERIOD]=false) and

*Annual population and employment, national concept (database)*, [https://data-explorer.oecd.org/vis?tm=population&pg=0&snb=188&dfds\]=dsDisseminateFinalDMZ&dfid\]=DSD\\_NAMAIN10%40DF\\_TABLE3\\_POP\\_EMPNC&dfag\]=OECD.SDD.NAD&dfvs\]=1.0&pd=2010%2C&dq=A.AUS%2BAUT%2BBEL%2BCAN%2BCHL%2BCOL%2BCRI%2BCZE%2BDNK%2BEST%2BFIN%2BFRA%2BDEU%2BGRC%2BHUN%2BISL%2BIRL%2BISR%2BITA%2BJPN%2BKOR%2BLVA%2BLTU%2BLUX%2BMEX%2BNLD%2BNZL%2BNOR%2BPOL%2BPRT%2BSVK%2BSVN%2BESP%2BSWE%2BCHL%2BTUR%2BGBR%2BUSA...POP.....&ly\[rw\]=REF\\_AREA&ly\[cl\]=TIME\\_PERIOD&to\[TIME\\_PERIOD\]=false](https://data-explorer.oecd.org/vis?tm=population&pg=0&snb=188&dfds]=dsDisseminateFinalDMZ&dfid]=DSD_NAMAIN10%40DF_TABLE3_POP_EMPNC&dfag]=OECD.SDD.NAD&dfvs]=1.0&pd=2010%2C&dq=A.AUS%2BAUT%2BBEL%2BCAN%2BCHL%2BCOL%2BCRI%2BCZE%2BDNK%2BEST%2BFIN%2BFRA%2BDEU%2BGRC%2BHUN%2BISL%2BIRL%2BISR%2BITA%2BJPN%2BKOR%2BLVA%2BLTU%2BLUX%2BMEX%2BNLD%2BNZL%2BNOR%2BPOL%2BPRT%2BSVK%2BSVN%2BESP%2BSWE%2BCHL%2BTUR%2BGBR%2BUSA...POP.....&ly[rw]=REF_AREA&ly[cl]=TIME_PERIOD&to[TIME_PERIOD]=false).

### 15.6 Household debt

**Indicator and unit of measurement:** Household debt as a percentage of household disposable income

**Type of indicator:** Risk factor

**Definition:** Household debt, expressed as a percentage of household net disposable income, refers to the total outstanding debt of households (including non-profit institutions serving households), which includes loans (primarily mortgage loans and consumer credit) and other accounts payable.

**Source:** *OECD Financial indicators dashboard: Households and NPISH (database)*, [https://data-explorer.oecd.org/vis?tm=Financial%20dashboard&pg=0&snb=13&dfds\]=dsDisseminateFinalDMZ&dfid\]=DSD\\_FIN\\_DASH%40DF\\_FIN\\_DASH\\_S1M&dfag\]=OECD.SDD.NAD&dfvs\]=1.0&pd=2010%2C&dq=A..LES1M\\_FD4.PT\\_B6N\\_S1M&ly\[rw\]=REF\\_AREA&ly\[cl\]=TIME\\_PERIOD&to\[TIME\\_PERIOD\]=false](https://data-explorer.oecd.org/vis?tm=Financial%20dashboard&pg=0&snb=13&dfds]=dsDisseminateFinalDMZ&dfid]=DSD_FIN_DASH%40DF_FIN_DASH_S1M&dfag]=OECD.SDD.NAD&dfvs]=1.0&pd=2010%2C&dq=A..LES1M_FD4.PT_B6N_S1M&ly[rw]=REF_AREA&ly[cl]=TIME_PERIOD&to[TIME_PERIOD]=false)

### 15.7 Financial net wealth of general government

**Indicator and unit of measurement:** Adjusted financial net worth of general government as a percentage of GDP

**Type of indicator:** Risk factor

**Definition:** Financial net worth of the general government, expressed in USD per capita at current PPPs, refers to the total value of financial assets held by the general government (i.e. central, state and local governments, as well as social security funds), less the total value of its outstanding liabilities.

**Source:** OECD Financial indicators dashboard: Government (database), [https://data-explorer.oecd.org/vis?tm=Financial%20dashboard&pg=0&snb=13&df\[ds\]=dsDisseminateFinalDMZ&df\[id\]=DSD\\_FIN\\_DASH%40DF\\_FIN\\_DASH\\_S13&df\[ag\]=OECD.SDD.NAD&df\[vs\]=1.0&pd=2010%2C&dq=A..LES13\\_BF90A.&ly\[rw\]=REF\\_AREA&ly\[c\]=TIME\\_PERIOD&to\[TIME\\_PERIOD\]=false](https://data-explorer.oecd.org/vis?tm=Financial%20dashboard&pg=0&snb=13&df[ds]=dsDisseminateFinalDMZ&df[id]=DSD_FIN_DASH%40DF_FIN_DASH_S13&df[ag]=OECD.SDD.NAD&df[vs]=1.0&pd=2010%2C&dq=A..LES13_BF90A.&ly[rw]=REF_AREA&ly[c]=TIME_PERIOD&to[TIME_PERIOD]=false)

### 15.8 Leverage ratio of monetary financial institutions

**Indicator and unit of measurement:** Ratio of selected assets to monetary financial institutions' own equity

**Type of indicator:** Risk factor

**Definition:** Banking sector leverage (also known as equity multiplier ratio or financial leverage) is the ratio between the total financial assets of the banking sector and the market value of its equity (excluding investment fund shares). The banking sector includes the central bank and monetary financial institutions.

**Source:** OECD Financial indicators dashboard: Financial corporations (database), [https://data-explorer.oecd.org/vis?tm=Financial%20dashboard&pg=0&snb=13&df\[ds\]=dsDisseminateFinalDMZ&df\[id\]=DSD\\_FIN\\_DASH%40DF\\_FIN\\_DASH\\_S12&df\[ag\]=OECD.SDD.NAD&df\[vs\]=1.0&pd=2010%2C&dq=A..LES12\\_FD4\\_F5LI.&ly\[rw\]=REF\\_AREA&ly\[c\]=TIME\\_PERIOD&to\[TIME\\_PERIOD\]=false](https://data-explorer.oecd.org/vis?tm=Financial%20dashboard&pg=0&snb=13&df[ds]=dsDisseminateFinalDMZ&df[id]=DSD_FIN_DASH%40DF_FIN_DASH_S12&df[ag]=OECD.SDD.NAD&df[vs]=1.0&pd=2010%2C&dq=A..LES12_FD4_F5LI.&ly[rw]=REF_AREA&ly[c]=TIME_PERIOD&to[TIME_PERIOD]=false).