



## Does Inequality Matter? How People Perceive Economic Disparities and Social Mobility in Japan

High-Level Roundtable organised by the OECD Centre on Well-being, Inclusion, Sustainability and Equal Opportunity (WISE) and the Japan Institute for Labour Policy and Training (JILPT)

Hybrid format (Speakers and limited audience in person)

Date: Thursday 8<sup>th</sup> December 2022

Timing: 16:00-18:00 (JST), 8:00-10:00 (CET)

Location: Belle Salle Toranomon, Sumitomofudousan Toranomon Tower 2F,  
2-2-1 Toranomon, Minato-ku, Tokyo ([https://www.bellesalle.co.jp/shisetsu/roppongi/bs\\_toranomon](https://www.bellesalle.co.jp/shisetsu/roppongi/bs_toranomon))

Register to participate online: [https://us02web.zoom.us/webinar/register/WN\\_itAoYIX2QjCN6uq2R1NbOQ](https://us02web.zoom.us/webinar/register/WN_itAoYIX2QjCN6uq2R1NbOQ)

Ensuring a strong and inclusive recovery to the COVID-19 crisis and addressing the looming challenges created by a rising cost of living and by geopolitical tensions will require policies and reforms that can tackle existing inequalities and promote equal opportunities as a foundation for future prosperity and social cohesion. However, ambitious reform packages on the scale needed to achieve this objective cannot be effectively implemented without widespread support from the public. To better understand what factors drive public support, the **OECD report *Does Inequality Matter?*** provides a detailed cross-country analysis of **what people think about inequality** and how their views shape the **demand for redistributive policies**.

The event will provide an opportunity **to present the findings on the *Does Inequality Matter?* report for Japan** and **stimulate discussion on what are the perceptions, definitions and experiences of inequality in Japan**. This discussion will be supported by the most recent data on inequality in income and wealth from the OECD Income and Wealth Distribution Databases and by research from JILPT.

The event will centre around a panel discussion which will bring to the table **the voice and perspectives from different parts of Japanese society**. Panellists will include representatives from policy-making circles, the private sector, trade unions and civil society. The roundtable discussion will focus on the following points:

1. What are the aspects and dimensions of inequality that are of main concern to people in Japan and how does this compare with other countries?
2. What risks would deeper inequalities raise for Japanese society?
3. What measures should be considered when we talk about (re)distribution to tackle inequalities?

### Draft Agenda

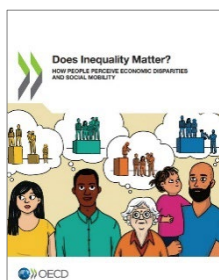
16:00	Opening remarks by OECD Deputy Secretary-General <b>Yoshiki Takeuchi</b>
16:10	Presentation of the <b><i>Does Inequality Matter?</i></b> report by <b>Romina Boarini</b> , Director of the OECD WISE Centre
16:20	Presentation on disparities in Japan by <b>Tomohiro Takami</b> , Senior Researcher at the Japan Institute for Labour Policy and Training

Co-organised with:

In collaboration with:

16:30	Discussion by <b>Sébastien Lechevalier</b> , Professor at the École des Hautes Études en Sciences Sociales and President of the Fondation France-Japon
16:40	Roundtable discussion on inequality in Japan, moderated by <b>Naoko Ueda</b> , Head of the OECD Tokyo Centre Invited speakers include: <ul style="list-style-type: none"> <li>• <b>Mana Nakazora</b>, Member of the Council for Economic and Fiscal Policy and Vice-Chairperson of Global Market at BNP Paribas Japan</li> <li>• <b>Kumie Inoue</b>, Executive Director, RENGO</li> <li>• <b>Takashi Inoue</b>, Senior Managing Director, Keidanren</li> <li>• <b>Sawako Shirahase</b>, Professor at the University of Tokyo, and Senior Vice-Rector at UN University</li> <li>• <b>Yuki Murohashi</b>, Representative Director of the Japan Youth Conference</li> </ul>
17:50	Wrap-up & concluding remarks by the President of JILPT, <b>Yoshio Higuchi</b>
18:00	End of event

### About the OECD report *Does Inequality Matter?*



Ensuring a strong and inclusive recovery to the COVID-19 crisis and addressing the looming challenges created by a rising cost of living and by geopolitical tensions will require policies and reforms that can tackle existing inequalities and promote equal opportunities as a foundation for future prosperity and social cohesion. However, ambitious reform packages on the scale needed to achieve this objective cannot be effectively implemented without widespread support from the public. To better understand what factors drive public support, the new OECD report *Does Inequality Matter?* provides a detailed cross-country analysis of what people think about inequality and how their views shape the demand for redistributive policies.

*Does Inequality Matter?* is the latest in a series of landmark publications through which the OECD has been documenting the extent, evolution, causes and the consequences of inequality through extensive statistical and policy analysis for nearly fifteen years now. This new report extends existing analysis by focusing on the way citizens perceive economic disparities and social mobility, including: Do people care about inequality? Are perceptions disconnected from reality? How divided is public opinion within countries?

Further information on the *Does Inequality Matter* report can be found on the following link: <https://www.oecd.org/social/does-inequality-matter-3023ed40-en.htm>

Further information on the OECD WISE Centre and its activities can be found on the following link: <https://www.oecd.org/wise>