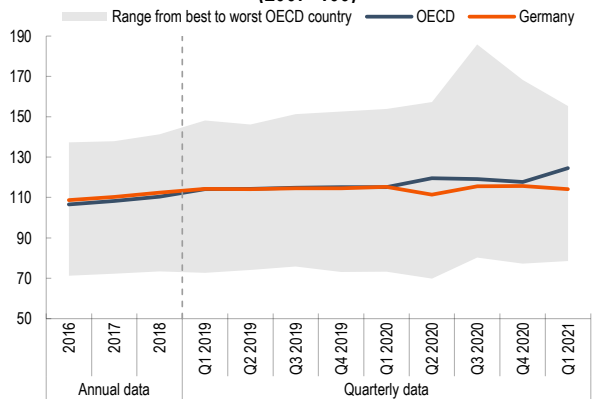




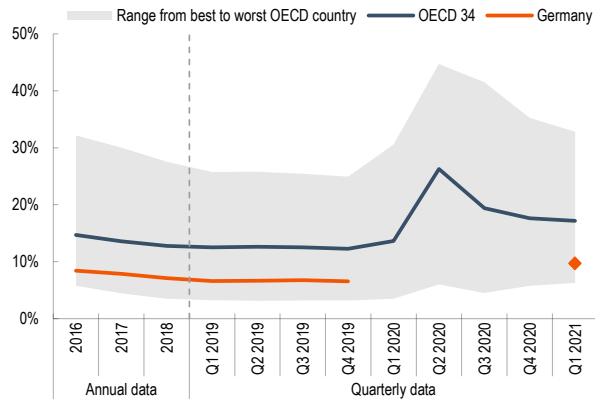
## Material well-being

### Household disposable income per capita, index (2007=100)



Note: Between Q4 2019 and Q4 2020, household disposable income per capita increased cumulatively by 1% in Germany, and 2% for the OECD on average.

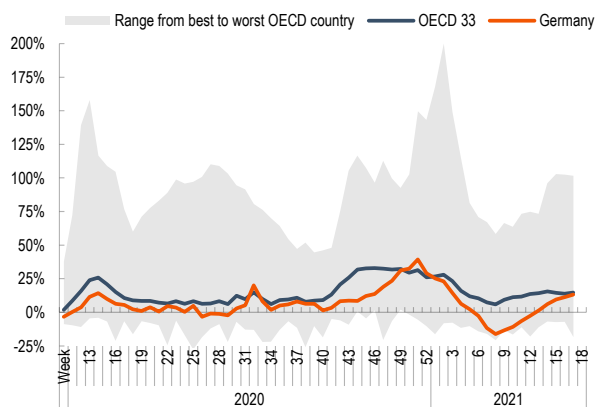
### Labour underutilisation rate



Note: The labour underutilisation rate includes the unemployed, marginally attached workers and the underemployed, expressed as a share of the total labour force. Between Q4 2019 and Q4 2020, the labour underutilisation rate increased from 12% to 18% for the OECD 34 on average. In Germany, 2021 data are not comparable to data from 2019 and earlier due to changes in survey methodology.

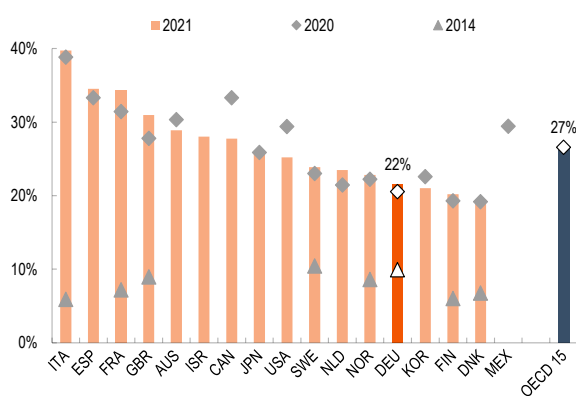
## Quality of life

### Excess mortality



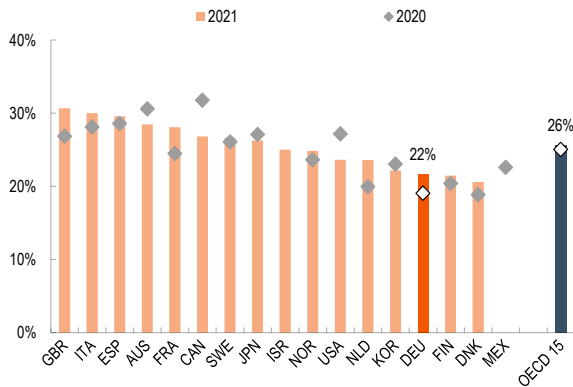
Note: Excess mortality is expressed as the percentage change in the total number of deaths from week 11 2020 to week 19 2021, compared to the 2015-2019 average. Between March 2020 and May 2021, excess mortality averaged 7% in Germany, and 16% for the OECD 33.

### Share of people at risk of depression



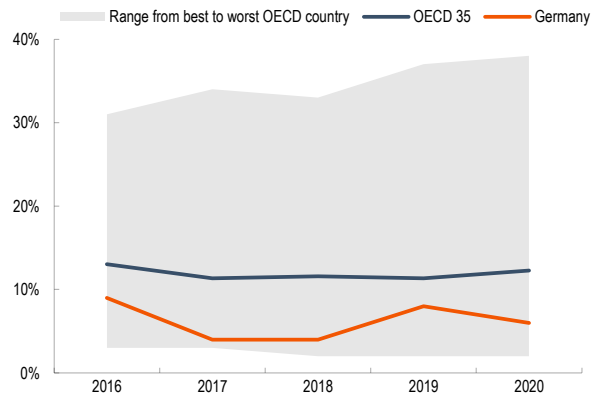
Note: Risk of depression is measured using the PHQ-4 instrument. In 2020 and 2021, the share of people at risk of depression in Germany was 21% and 22% respectively, and 27% for both years for the OECD 15 on average. In 2014, it was 10% in Germany, but this value is not strictly comparable with later years, as it stems from a different source.

### Share of people at risk of anxiety



Note: Risk of anxiety is measured using the PHQ-4 instrument. In 2020 and 2021, the share of people at risk of anxiety in Germany was 19% and 22% respectively, and 25% and 26% for the OECD 15 on average.

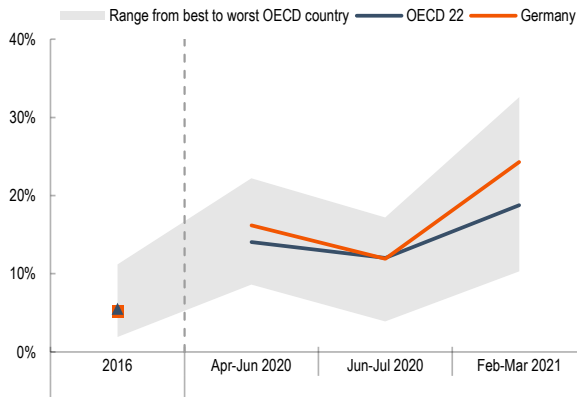
### Share of people with very low life satisfaction



Note: Very low life satisfaction is defined as answering 4 or less on the 0-10 Cantril ladder scale. Between 2019 and 2020, the share of people reporting low life satisfaction decreased from 8% to 6% in Germany, and increased from 11% to 12% for the OECD 35 on average.

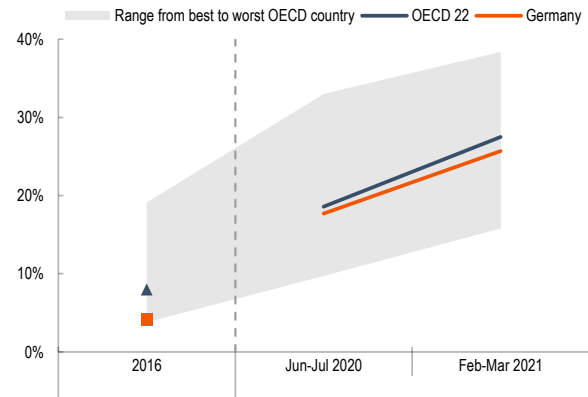
## Community relations

### Share of people feeling lonely



Note: Data refer to people reporting feeling lonely "most" or "all of the time" in the past two weeks. In April-June 2020 and February-March 2021, it was 16% and 24% respectively in Germany, and 14% and 19% for the OECD 22 on average. In 2016, the share of people feeling lonely was 5% in Germany and 6% for the OECD 22 on average, but this value is not strictly comparable with later years, as it stems from a different source.

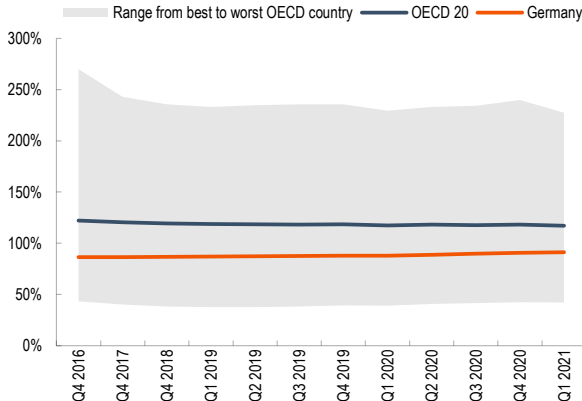
### Share of people feeling left out of society



Note: Data refer to the share of people agreeing or strongly agreeing with the statement "I feel left out of society". In June-July 2020 and February-March 2021, it was 18% and 26% respectively in Germany, and 19% and 27% for the OECD 22 on average. In 2016, the share of people feeling left out was 4% in Germany and 8% for the OECD 22 on average, but this value is not strictly comparable with later years, as it stems from a different source.

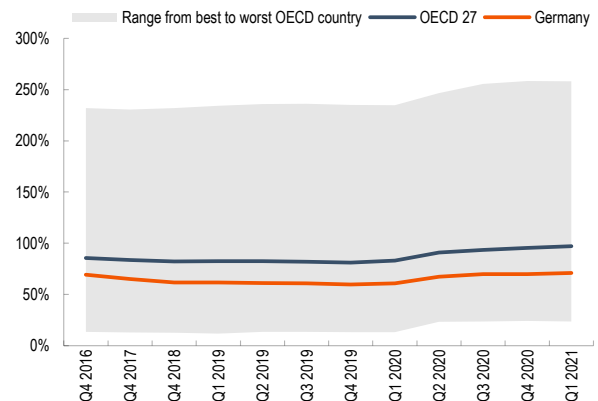
## Sustainability

### Household debt as a share of income

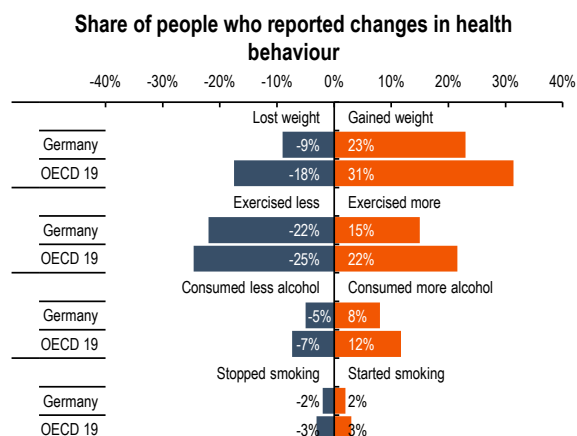


Note: Between Q4 2019 and Q4 2020, household debt increased from 88% to 91% of gross household disposable income in Germany, and decreased from 119% to 118% for the OECD 20 on average.

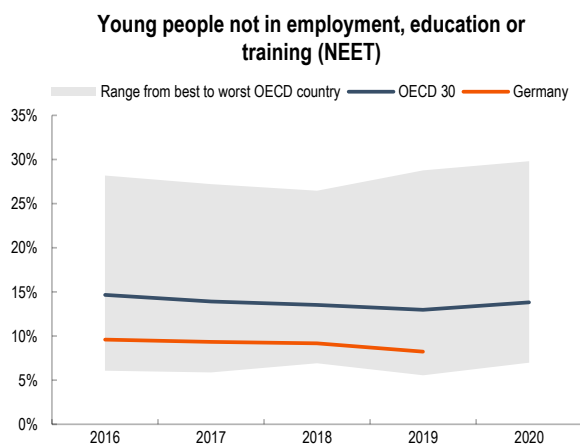
### Government debt as a share of GDP



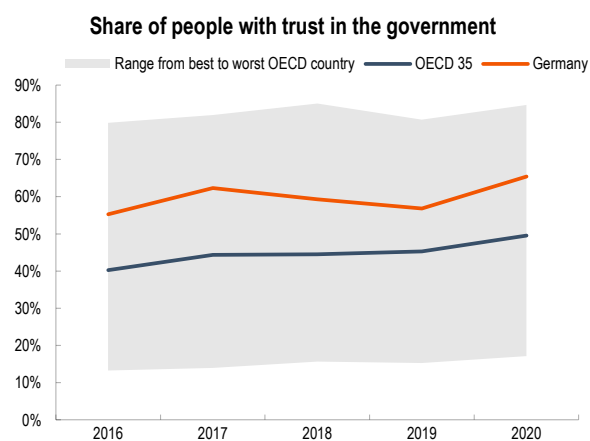
Note: Between Q4 2019 and Q4 2020, government gross debt increased from 60% to 70% of GDP in Germany, and from 81% to 95% of GDP for the OECD 27 on average.



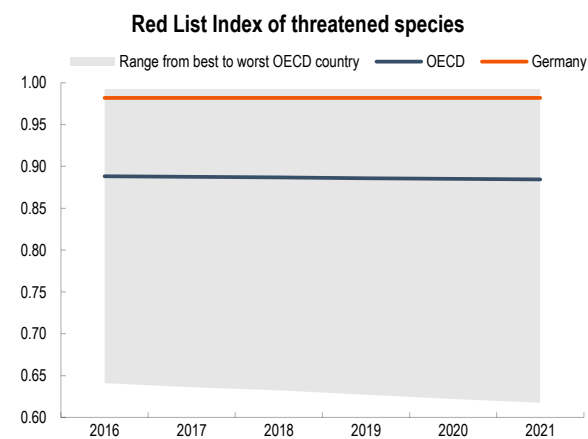
Note: Data refer to the share of people reporting changes in health behaviour since the start of the pandemic until October-November 2020.



Note: Between 2019 and 2020, the share of young people aged 15-29 not in employment, education or training increased from 13% to 14% for the OECD 30 on average.



Note: Between 2019 and 2020, the share of people answering "yes" to a question about whether they have confidence in the national government increased from 57% to 65% in Germany, and from 45% to 49% for the OECD 35 on average.



Note: A Red List Index value of 0 refers to all species having gone extinct, and a value of 1.0 refers to all species qualifying as "Least Concern". Between 2019 and 2021, the Red List Index of threatened species remained stable at 0.98 in Germany, and decreased from 0.89 to 0.88 for the OECD on average.

### For more information

Access the complete OECD (2021) *COVID-19 and Well-being: Life in the Pandemic* publication: [www.oecd.org/wise/covid-19-and-well-being-1e1ecb53-en.htm](http://www.oecd.org/wise/covid-19-and-well-being-1e1ecb53-en.htm)

Find the data used in this country profile, and more information about indicator definitions, sources and methodology at: [www.oecd.org/wise/COVID-19-well-being-country-notes-data.xlsx](http://www.oecd.org/wise/COVID-19-well-being-country-notes-data.xlsx).

Whenever data are available for fewer than all 38 OECD countries, the number of countries included in the calculation of the OECD average is specified in the figure and note (e.g. OECD 33).

Whenever data for the country of this note are not available, only the OECD average is shown.