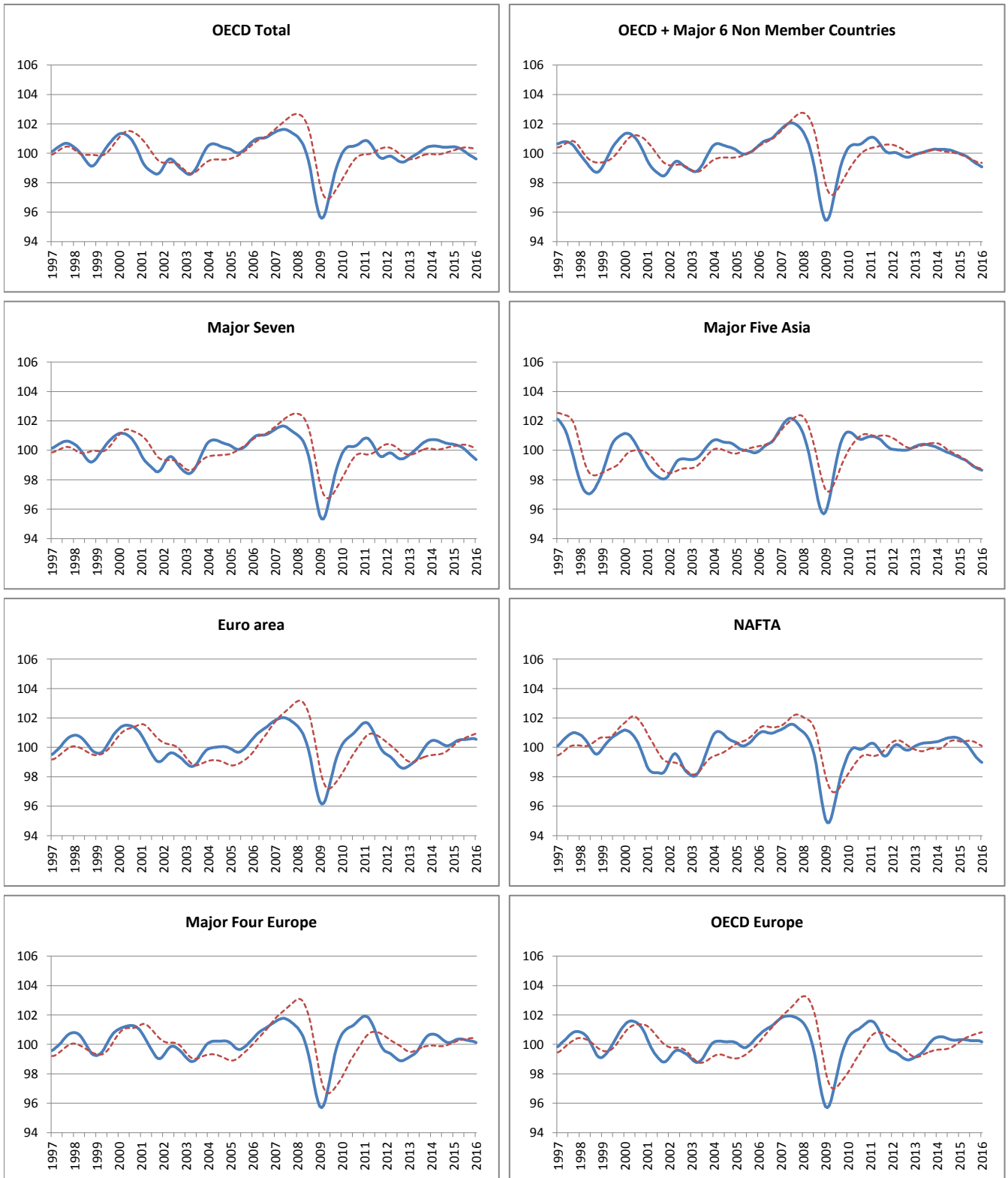


AREA TOTALS

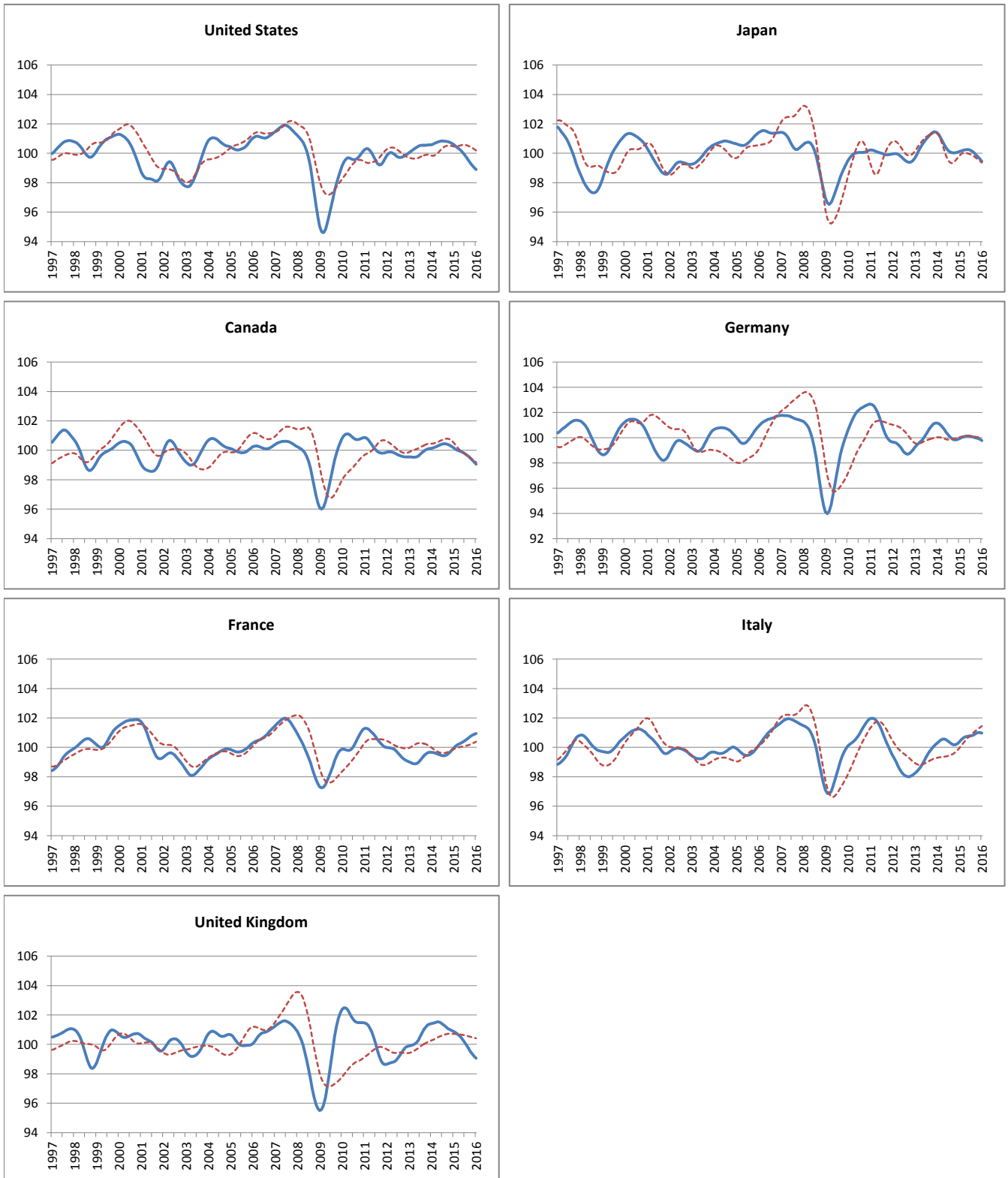
----- Reference series — Composite leading indicators



	OECD Total	OECD + Major 6 Non Member Countries	Major Seven	Major Five Asia	Euro Area	NAFTA	Major Four Europe	OECD Europe
Amplitude adjusted (long term average =100)								
February 2015	100.43	99.95	100.38	99.45	100.39	100.52	100.30	100.32
March 2015	100.40	99.90	100.34	99.40	100.46	100.43	100.34	100.33
April 2015	100.35	99.85	100.29	99.34	100.50	100.32	100.37	100.32
May 2015	100.28	99.78	100.24	99.27	100.53	100.20	100.37	100.30
June 2015	100.21	99.70	100.17	99.18	100.53	100.06	100.35	100.28
July 2015	100.12	99.59	100.07	99.07	100.53	99.88	100.32	100.26
August 2015	100.01	99.48	99.95	98.96	100.54	99.68	100.29	100.25
September 2015	99.92	99.39	99.82	98.87	100.56	99.50	100.26	100.25
October 2015	99.85	99.31	99.71	98.81	100.59	99.34	100.24	100.26
November 2015	99.78	99.23	99.60	98.75	100.60	99.20	100.22	100.25
December 2015	99.70	99.16	99.49	98.70	100.59	99.08	100.18	100.23
January 2016	99.62	99.08	99.37	98.65	100.55	98.97	100.12	100.17
Month on Month growth rate (%)								
February 2015	-0.01	-0.05	-0.03	-0.06	0.08	-0.07	0.06	0.01
March 2015	-0.03	-0.05	-0.04	-0.05	0.07	-0.09	0.04	0.00
April 2015	-0.05	-0.05	-0.04	-0.06	0.05	-0.11	0.02	-0.01
May 2015	-0.06	-0.07	-0.06	-0.08	0.02	-0.12	0.00	-0.02
June 2015	-0.08	-0.09	-0.07	-0.09	0.01	-0.14	-0.02	-0.02
July 2015	-0.09	-0.10	-0.10	-0.11	0.00	-0.18	-0.03	-0.02
August 2015	-0.10	-0.11	-0.12	-0.11	0.01	-0.20	-0.03	-0.01
September 2015	-0.09	-0.10	-0.12	-0.09	0.02	-0.19	-0.03	0.00
October 2015	-0.07	-0.08	-0.11	-0.07	0.02	-0.16	-0.02	0.01
November 2015	-0.07	-0.07	-0.11	-0.05	0.01	-0.14	-0.02	0.00
December 2015	-0.08	-0.08	-0.11	-0.05	-0.01	-0.12	-0.04	-0.03
January 2016	-0.08	-0.08	-0.12	-0.05	-0.04	-0.11	-0.06	-0.06
Year on Year growth rate (%)								
February 2015	-0.06	-0.32	-0.34	-0.67	-0.08	0.11	-0.39	-0.19
March 2015	-0.10	-0.36	-0.38	-0.67	-0.01	-0.03	-0.33	-0.19
April 2015	-0.13	-0.42	-0.41	-0.66	0.07	-0.19	-0.26	-0.19
May 2015	-0.18	-0.48	-0.43	-0.68	0.15	-0.36	-0.18	-0.18
June 2015	-0.23	-0.55	-0.46	-0.72	0.24	-0.54	-0.10	-0.16
July 2015	-0.31	-0.64	-0.51	-0.78	0.32	-0.75	-0.02	-0.12
August 2015	-0.39	-0.73	-0.58	-0.84	0.39	-0.98	0.05	-0.09
September 2015	-0.48	-0.79	-0.66	-0.88	0.45	-1.18	0.11	-0.05
October 2015	-0.56	-0.83	-0.74	-0.89	0.47	-1.34	0.12	-0.03
November 2015	-0.65	-0.86	-0.84	-0.88	0.45	-1.46	0.09	-0.03
December 2015	-0.73	-0.88	-0.93	-0.88	0.37	-1.55	0.01	-0.07
January 2016	-0.82	-0.92	-1.03	-0.87	0.24	-1.61	-0.12	-0.14

MAJOR SEVEN OECD COUNTRIES

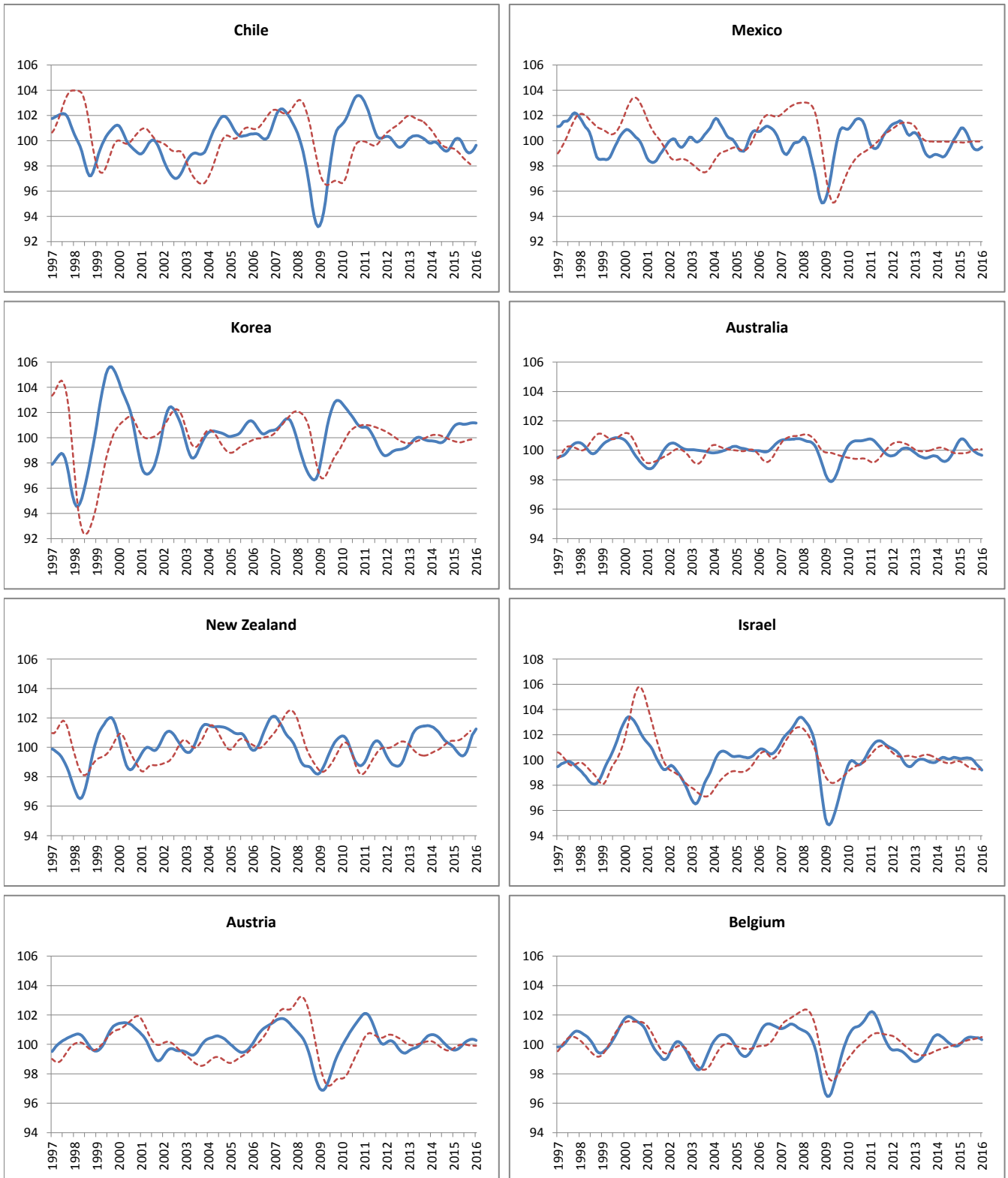
----- Reference series — Composite leading indicators



	Canada	United States	Japan	France	Germany	Italy	United Kingdom
Amplitude adjusted (long term average =100)							
February 2015	100.07	100.50	100.16	100.07	99.99	100.51	100.81
March 2015	100.01	100.39	100.20	100.17	100.06	100.63	100.71
April 2015	99.95	100.28	100.23	100.23	100.11	100.71	100.59
May 2015	99.90	100.17	100.25	100.29	100.14	100.74	100.46
June 2015	99.85	100.04	100.24	100.36	100.14	100.75	100.30
July 2015	99.78	99.88	100.20	100.45	100.11	100.77	100.12
August 2015	99.68	99.69	100.12	100.54	100.06	100.80	99.92
September 2015	99.58	99.50	100.01	100.64	100.02	100.87	99.71
October 2015	99.46	99.33	99.89	100.73	99.98	100.95	99.52
November 2015	99.34	99.17	99.76	100.82	99.94	101.00	99.34
December 2015	99.20	99.03	99.61	100.89	99.87	101.01	99.20
January 2016	99.06	98.89	99.45	100.93	99.77	100.97	99.06
Month on Month growth rate (%)							
February 2015	-0.09	-0.10	0.05	0.12	0.07	0.13	-0.07
March 2015	-0.07	-0.11	0.04	0.09	0.07	0.11	-0.10
April 2015	-0.06	-0.11	0.03	0.07	0.05	0.08	-0.12
May 2015	-0.05	-0.11	0.02	0.06	0.03	0.03	-0.13
June 2015	-0.05	-0.13	0.00	0.07	0.00	0.01	-0.15
July 2015	-0.07	-0.16	-0.05	0.08	-0.03	0.01	-0.18
August 2015	-0.10	-0.19	-0.08	0.09	-0.04	0.04	-0.21
September 2015	-0.11	-0.19	-0.10	0.10	-0.04	0.07	-0.21
October 2015	-0.11	-0.17	-0.12	0.09	-0.04	0.08	-0.19
November 2015	-0.12	-0.16	-0.14	0.08	-0.04	0.05	-0.17
December 2015	-0.14	-0.15	-0.15	0.07	-0.06	0.01	-0.15
January 2016	-0.14	-0.14	-0.16	0.04	-0.10	-0.04	-0.13
Year on Year growth rate (%)							
February 2015	-0.10	-0.13	-1.07	0.43	-1.10	0.12	-0.62
March 2015	-0.21	-0.30	-0.84	0.56	-0.92	0.13	-0.76
April 2015	-0.32	-0.46	-0.56	0.68	-0.70	0.15	-0.91
May 2015	-0.43	-0.62	-0.30	0.79	-0.48	0.18	-1.05
June 2015	-0.54	-0.78	-0.10	0.91	-0.29	0.25	-1.16
July 2015	-0.65	-0.94	0.00	1.02	-0.12	0.35	-1.24
August 2015	-0.76	-1.12	0.03	1.12	0.01	0.49	-1.34
September 2015	-0.86	-1.30	-0.03	1.18	0.10	0.65	-1.44
October 2015	-0.92	-1.44	-0.13	1.19	0.13	0.77	-1.53
November 2015	-0.98	-1.56	-0.28	1.16	0.10	0.82	-1.63
December 2015	-1.04	-1.64	-0.46	1.08	0.01	0.75	-1.72
January 2016	-1.10	-1.69	-0.66	0.98	-0.15	0.59	-1.80

OTHER OECD COUNTRIES

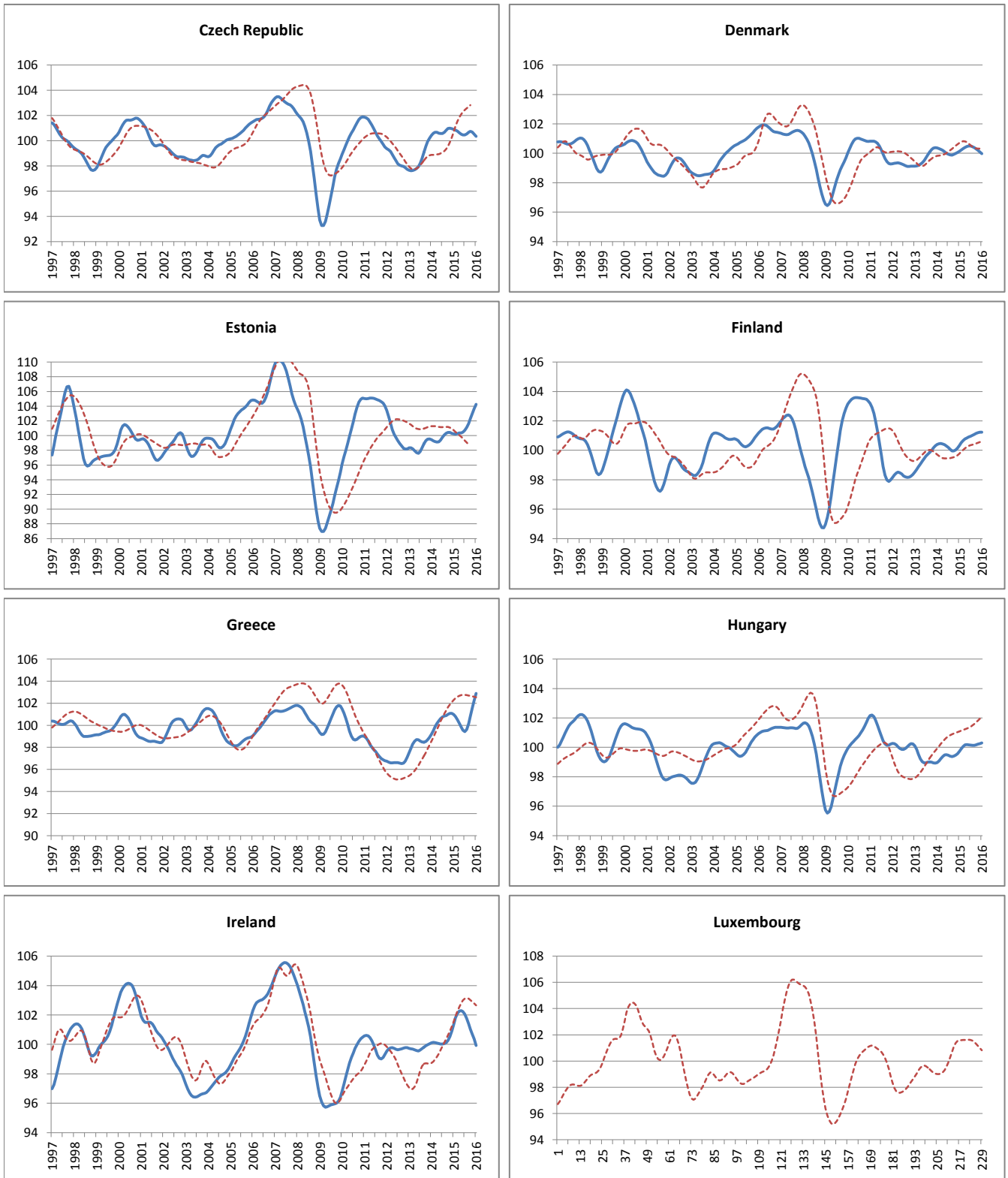
----- Reference series — Composite leading indicators



	Chile	Mexico	Korea	Australia	New Zealand	Israel	Austria	Belgium
Amplitude adjusted (long term average =100)								
February 2015	100.13	101.00	101.01	100.78	99.85	100.09	99.61	100.08
March 2015	100.20	101.00	101.09	100.77	99.69	100.12	99.66	100.22
April 2015	100.15	100.83	101.12	100.68	99.53	100.15	99.75	100.35
May 2015	99.98	100.57	101.10	100.51	99.43	100.16	99.86	100.43
June 2015	99.70	100.27	101.07	100.33	99.41	100.16	99.99	100.48
July 2015	99.38	99.89	101.06	100.17	99.50	100.12	100.11	100.50
August 2015	99.13	99.52	101.08	100.04	99.71	100.04	100.21	100.48
September 2015	99.03	99.33	101.12	99.93	100.05	99.88	100.28	100.46
October 2015	99.04	99.28	101.15	99.84	100.44	99.69	100.33	100.45
November 2015	99.16	99.28	101.17	99.76	100.83	99.53	100.35	100.45
December 2015	99.34	99.36	101.18	99.71	101.04	99.38	100.33	100.42
January 2016	99.63	99.48	101.17	99.67	101.25	99.19	100.26	100.31
Month on Month growth rate (%)								
February 2015	0.18	0.18	0.14	0.10	-0.16	-0.02	0.00	0.12
March 2015	0.06	0.00	0.08	0.00	-0.16	0.03	0.05	0.14
April 2015	-0.05	-0.16	0.02	-0.10	-0.15	0.03	0.09	0.12
May 2015	-0.17	-0.26	-0.02	-0.16	-0.10	0.02	0.12	0.08
June 2015	-0.28	-0.30	-0.03	-0.18	-0.02	-0.01	0.13	0.05
July 2015	-0.33	-0.38	-0.01	-0.16	0.09	-0.03	0.12	0.02
August 2015	-0.25	-0.36	0.02	-0.13	0.22	-0.09	0.10	-0.02
September 2015	-0.10	-0.19	0.04	-0.11	0.34	-0.15	0.07	-0.02
October 2015	0.01	-0.06	0.04	-0.09	0.39	-0.20	0.05	-0.01
November 2015	0.12	0.00	0.02	-0.08	0.39	-0.16	0.02	0.00
December 2015	0.19	0.09	0.01	-0.05	0.21	-0.16	-0.02	-0.03
January 2016	0.29	0.12	-0.01	-0.04	0.21	-0.19	-0.07	-0.10
Year on Year growth rate (%)								
February 2015	0.25	2.18	1.28	1.31	-1.49	0.06	-1.04	-0.55
March 2015	0.30	2.25	1.39	1.42	-1.56	-0.01	-0.96	-0.34
April 2015	0.32	2.15	1.46	1.41	-1.60	-0.05	-0.81	-0.12
May 2015	0.29	1.84	1.49	1.29	-1.57	-0.02	-0.60	0.07
June 2015	0.20	1.37	1.47	1.08	-1.43	0.03	-0.35	0.23
July 2015	0.04	0.71	1.42	0.82	-1.16	0.06	-0.09	0.36
August 2015	-0.08	0.08	1.33	0.53	-0.78	-0.04	0.14	0.45
September 2015	-0.13	-0.43	1.19	0.22	-0.32	-0.26	0.35	0.50
October 2015	-0.17	-0.77	1.00	-0.12	0.14	-0.52	0.51	0.55
November 2015	-0.25	-1.00	0.76	-0.46	0.60	-0.66	0.63	0.58
December 2015	-0.33	-1.16	0.51	-0.77	0.90	-0.77	0.68	0.52
January 2016	-0.32	-1.32	0.30	-1.00	1.24	-0.92	0.65	0.35

OTHER OECD COUNTRIES

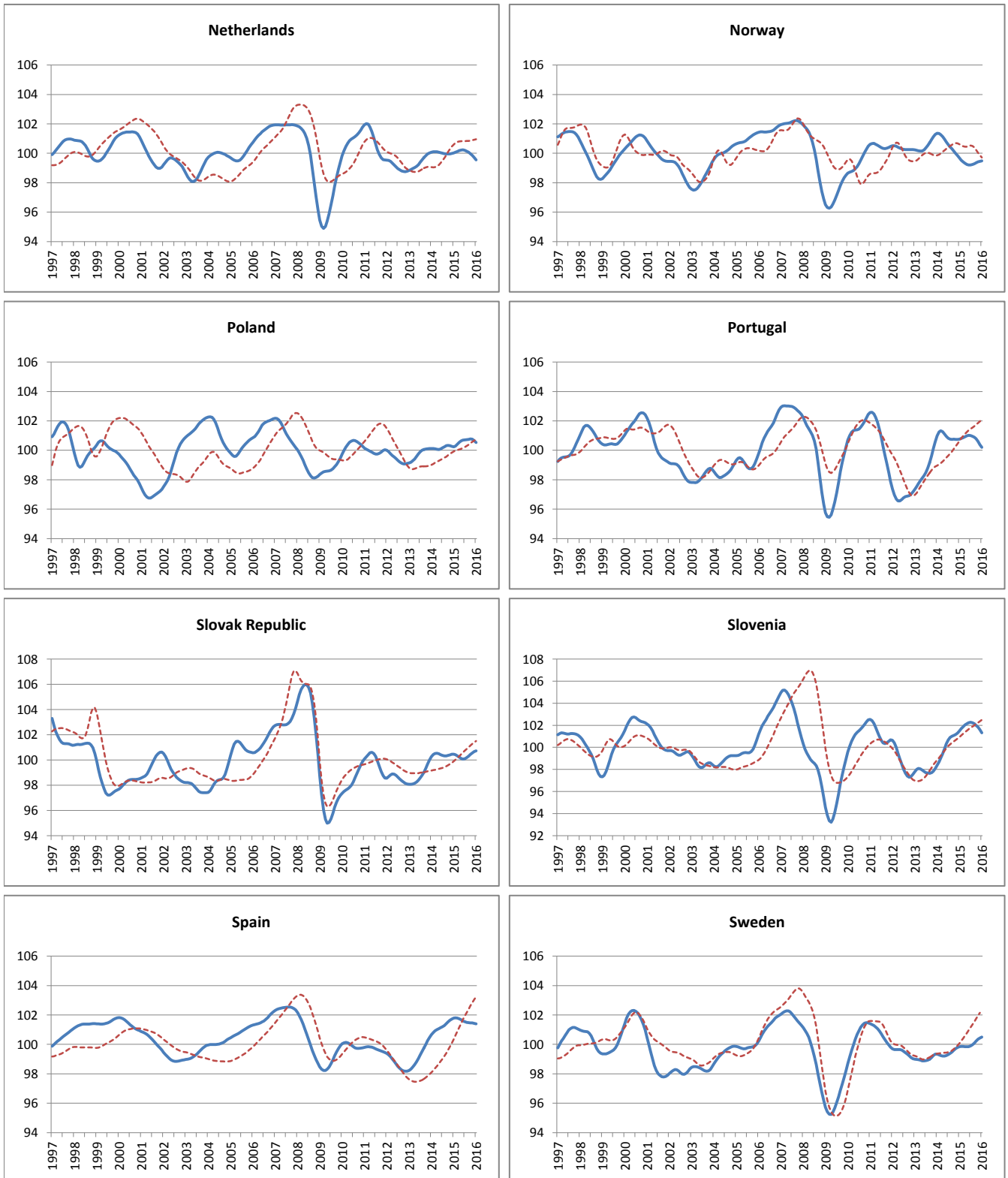
----- Reference series — Composite leading indicators



	Czech Republic	Denmark	Estonia	Finland	Greece	Hungary	Ireland	Luxembourg
Amplitude adjusted (long term average =100)								
February 2015	100.84	100.22	100.20	100.51	100.80	99.90	101.80	n.a
March 2015	100.76	100.31	100.28	100.66	100.52	100.06	102.10	n.a
April 2015	100.63	100.40	100.35	100.77	100.18	100.16	102.25	n.a
May 2015	100.51	100.46	100.38	100.84	99.84	100.18	102.29	n.a
June 2015	100.46	100.50	100.48	100.90	99.57	100.17	102.23	n.a
July 2015	100.46	100.50	100.74	100.96	99.43	100.15	102.04	n.a
August 2015	100.52	100.45	101.12	101.02	99.63	100.13	101.75	n.a
September 2015	100.66	100.38	101.63	101.08	100.14	100.14	101.40	n.a
October 2015	100.74	100.30	102.29	101.15	100.81	100.17	101.03	n.a
November 2015	100.68	100.21	102.99	101.21	101.55	100.22	100.69	n.a
December 2015	100.52	100.10	103.66	101.24	102.26	100.25	100.36	n.a
January 2016	100.35	99.98	104.26	101.23	102.89	100.30	99.93	n.a
Month on Month growth rate (%)								
February 2015	-0.06	0.08	-0.05	0.17	-0.18	0.18	0.43	-
March 2015	-0.08	0.09	0.08	0.15	-0.27	0.16	0.29	-
April 2015	-0.13	0.09	0.08	0.11	-0.34	0.10	0.15	-
May 2015	-0.12	0.06	0.03	0.07	-0.33	0.02	0.04	-
June 2015	-0.05	0.04	0.10	0.06	-0.28	-0.01	-0.06	-
July 2015	0.00	0.00	0.26	0.06	-0.13	-0.02	-0.18	-
August 2015	0.06	-0.05	0.38	0.06	0.19	-0.02	-0.29	-
September 2015	0.14	-0.07	0.50	0.06	0.51	0.01	-0.34	-
October 2015	0.07	-0.08	0.64	0.07	0.68	0.03	-0.37	-
November 2015	-0.06	-0.09	0.68	0.06	0.73	0.04	-0.34	-
December 2015	-0.16	-0.11	0.65	0.03	0.70	0.04	-0.33	-
January 2016	-0.17	-0.12	0.58	-0.01	0.61	0.05	-0.43	-
Year on Year growth rate (%)								
February 2015	0.25	-0.10	0.90	0.06	1.28	0.83	1.66	-
March 2015	0.09	0.05	1.11	0.20	0.66	0.85	1.97	-
April 2015	-0.03	0.20	1.24	0.33	0.01	0.80	2.16	-
May 2015	-0.09	0.35	1.22	0.45	-0.56	0.71	2.24	-
June 2015	-0.10	0.49	1.09	0.59	-1.03	0.67	2.21	-
July 2015	-0.11	0.56	0.97	0.76	-1.31	0.69	2.02	-
August 2015	-0.13	0.56	1.01	0.95	-1.20	0.73	1.70	-
September 2015	-0.17	0.50	1.30	1.12	-0.74	0.78	1.27	-
October 2015	-0.23	0.38	1.84	1.20	-0.17	0.78	0.76	-
November 2015	-0.31	0.22	2.56	1.18	0.47	0.76	0.15	-
December 2015	-0.42	0.04	3.35	1.08	1.18	0.68	-0.55	-
January 2016	-0.54	-0.16	4.01	0.89	1.89	0.58	-1.41	-

OTHER OECD COUNTRIES

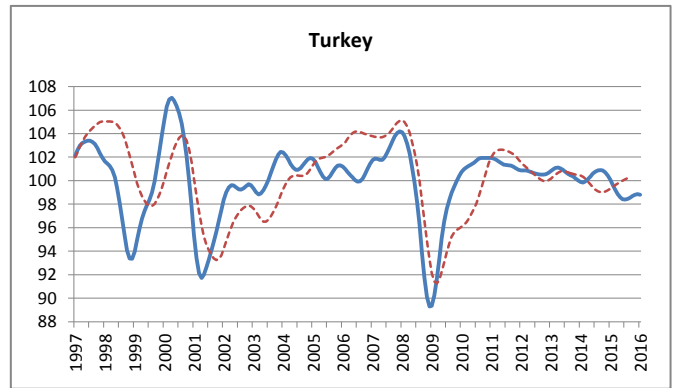
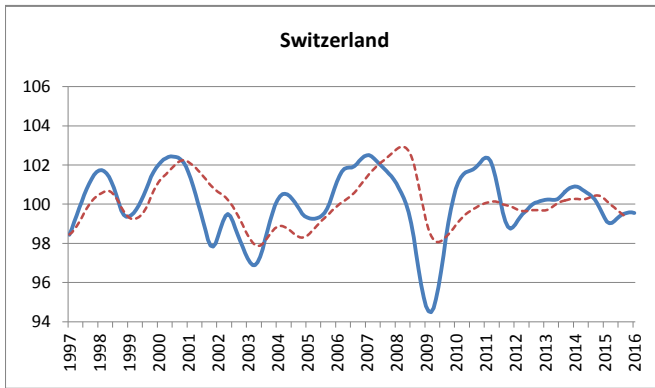
----- Reference series — Composite leading indicators



	Netherlands	Norway	Poland	Portugal	Slovak Republic	Slovenia	Spain	Sweden
Amplitude adjusted (long term average =100)								
February 2015	100.06	99.54	100.28	100.80	100.42	101.68	101.80	99.85
March 2015	100.12	99.42	100.41	100.86	100.33	101.87	101.78	99.85
April 2015	100.19	99.32	100.55	100.92	100.22	102.03	101.73	99.84
May 2015	100.22	99.24	100.65	100.98	100.12	102.14	101.66	99.84
June 2015	100.23	99.20	100.69	101.01	100.08	102.23	101.60	99.84
July 2015	100.20	99.20	100.71	101.00	100.10	102.27	101.54	99.89
August 2015	100.14	99.23	100.72	100.95	100.18	102.23	101.50	99.97
September 2015	100.07	99.29	100.75	100.89	100.30	102.14	101.48	100.09
October 2015	99.97	99.36	100.77	100.79	100.43	102.00	101.47	100.22
November 2015	99.86	99.41	100.76	100.60	100.55	101.83	101.45	100.34
December 2015	99.72	99.46	100.67	100.39	100.66	101.61	101.43	100.43
January 2016	99.55	99.48	100.52	100.20	100.73	101.32	101.39	100.50
Month on Month growth rate (%)								
February 2015	0.05	-0.14	0.05	0.05	-0.04	0.19	0.02	0.02
March 2015	0.06	-0.12	0.13	0.06	-0.09	0.19	-0.02	0.00
April 2015	0.06	-0.10	0.14	0.06	-0.11	0.16	-0.05	-0.01
May 2015	0.04	-0.08	0.10	0.06	-0.10	0.11	-0.06	-0.01
June 2015	0.01	-0.04	0.04	0.03	-0.04	0.08	-0.07	0.01
July 2015	-0.03	0.00	0.02	-0.02	0.02	0.04	-0.06	0.04
August 2015	-0.06	0.03	0.02	-0.04	0.08	-0.03	-0.04	0.09
September 2015	-0.08	0.06	0.02	-0.06	0.12	-0.09	-0.02	0.12
October 2015	-0.09	0.07	0.03	-0.10	0.13	-0.14	-0.01	0.13
November 2015	-0.11	0.06	-0.02	-0.19	0.12	-0.17	-0.01	0.12
December 2015	-0.14	0.04	-0.09	-0.21	0.10	-0.22	-0.02	0.09
January 2016	-0.17	0.03	-0.14	-0.19	0.07	-0.28	-0.04	0.07
Year on Year growth rate (%)								
February 2015	-0.03	-1.79	0.16	-0.43	-0.02	3.03	0.98	0.57
March 2015	0.02	-1.83	0.32	-0.46	-0.19	2.86	0.85	0.62
April 2015	0.09	-1.79	0.49	-0.34	-0.31	2.61	0.71	0.64
May 2015	0.15	-1.69	0.59	-0.12	-0.36	2.26	0.59	0.64
June 2015	0.19	-1.56	0.60	0.06	-0.34	1.90	0.46	0.61
July 2015	0.20	-1.39	0.54	0.18	-0.26	1.58	0.34	0.59
August 2015	0.17	-1.20	0.48	0.20	-0.15	1.32	0.21	0.59
September 2015	0.11	-1.00	0.44	0.15	-0.03	1.11	0.07	0.61
October 2015	0.02	-0.79	0.43	0.04	0.07	0.91	-0.06	0.62
November 2015	-0.10	-0.58	0.44	-0.14	0.15	0.67	-0.18	0.63
December 2015	-0.27	-0.38	0.40	-0.35	0.21	0.32	-0.29	0.64
January 2016	-0.46	-0.19	0.29	-0.55	0.27	-0.16	-0.39	0.66

OTHER OECD COUNTRIES

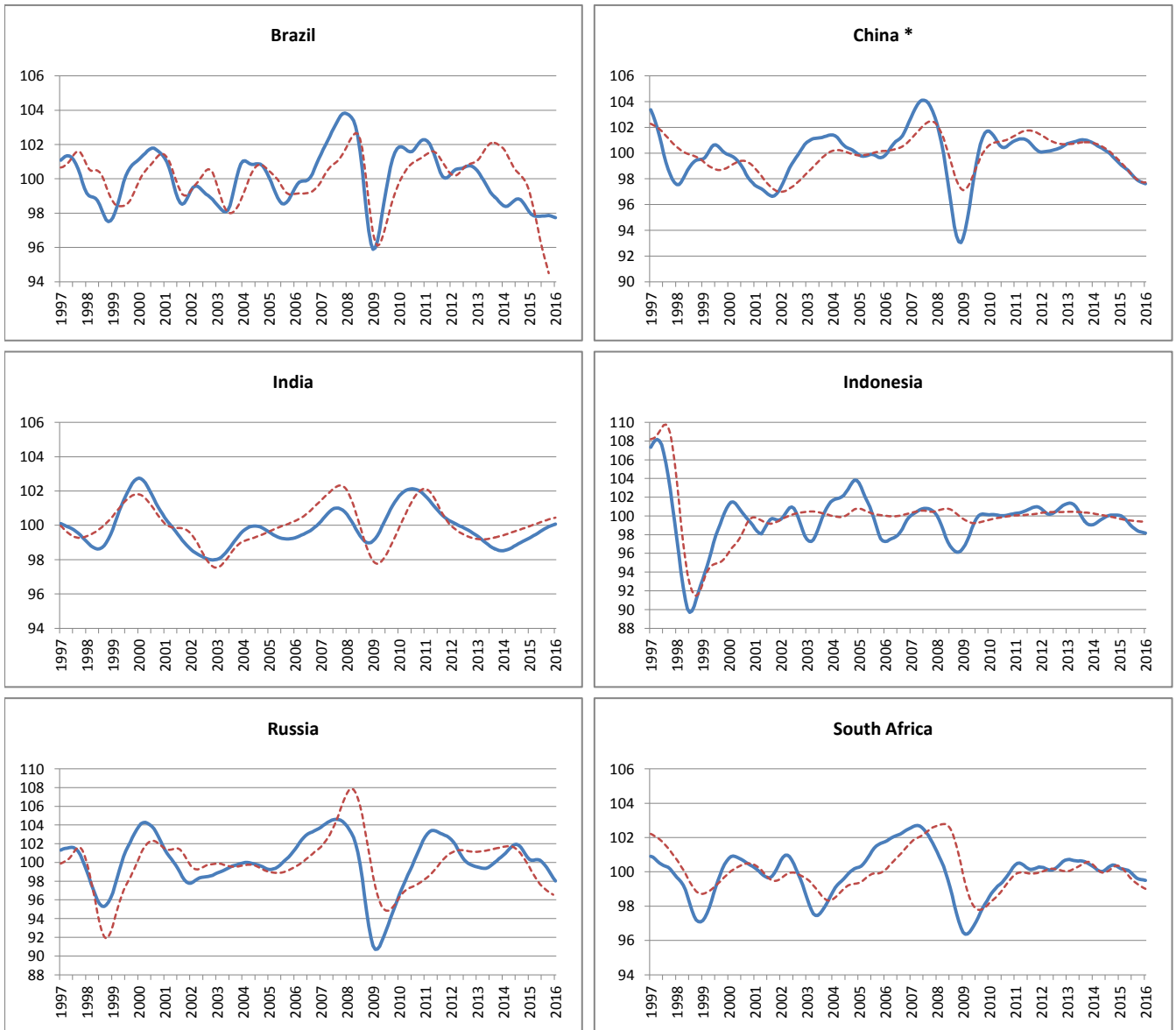
----- Reference series — Composite leading indicators



	Switzerland	Turkey
Amplitude adjusted (long term average =100)		
February 2015	99.10	99.66
March 2015	99.03	99.23
April 2015	99.05	98.86
May 2015	99.13	98.58
June 2015	99.25	98.41
July 2015	99.38	98.39
August 2015	99.46	98.45
September 2015	99.51	98.56
October 2015	99.56	98.69
November 2015	99.58	98.80
December 2015	99.57	98.85
January 2016	99.55	98.81
Month on Month growth rate (%)		
February 2015	-0.21	-0.42
March 2015	-0.08	-0.44
April 2015	0.02	-0.37
May 2015	0.08	-0.28
June 2015	0.12	-0.17
July 2015	0.13	-0.03
August 2015	0.08	0.07
September 2015	0.05	0.11
October 2015	0.04	0.13
November 2015	0.02	0.11
December 2015	-0.01	0.05
January 2016	-0.03	-0.04
Year on Year growth rate (%)		
February 2015	-1.77	-0.18
March 2015	-1.79	-0.71
April 2015	-1.68	-1.26
May 2015	-1.52	-1.77
June 2015	-1.32	-2.16
July 2015	-1.11	-2.36
August 2015	-0.92	-2.40
September 2015	-0.73	-2.33
October 2015	-0.51	-2.15
November 2015	-0.25	-1.89
December 2015	0.01	-1.58
January 2016	0.24	-1.27

MAJOR NON MEMBER COUNTRIES

----- Reference series — Composite leading indicators



* The reference series for China is the Index of Industrial Production.

	Brasil	China	India	Indonesia	Russia	South Africa
Amplitude adjusted (long term average =100)						
February 2015	97.93	99.04	99.33	99.99	100.24	100.17
March 2015	97.84	98.92	99.39	99.83	100.25	100.15
April 2015	97.81	98.80	99.47	99.61	100.30	100.13
May 2015	97.81	98.65	99.55	99.34	100.31	100.09
June 2015	97.82	98.48	99.63	99.08	100.22	100.00
July 2015	97.83	98.29	99.71	98.84	100.03	99.87
August 2015	97.84	98.09	99.79	98.64	99.77	99.74
September 2015	97.85	97.94	99.86	98.47	99.46	99.64
October 2015	97.86	97.83	99.92	98.36	99.12	99.57
November 2015	97.84	97.76	99.98	98.28	98.75	99.54
December 2015	97.79	97.68	100.03	98.23	98.36	99.53
January 2016	97.74	97.61	100.07	98.18	98.02	99.49
Month on Month growth rate (%)						
February 2015	-0.14	-0.17	0.07	-0.07	-0.10	-0.06
March 2015	-0.09	-0.13	0.07	-0.15	0.01	-0.03
April 2015	-0.03	-0.12	0.08	-0.23	0.05	-0.02
May 2015	0.00	-0.14	0.08	-0.26	0.01	-0.04
June 2015	0.01	-0.17	0.08	-0.27	-0.08	-0.09
July 2015	0.01	-0.20	0.08	-0.24	-0.19	-0.13
August 2015	0.01	-0.20	0.08	-0.21	-0.27	-0.13
September 2015	0.02	-0.15	0.07	-0.17	-0.31	-0.10
October 2015	0.01	-0.11	0.06	-0.11	-0.34	-0.06
November 2015	-0.02	-0.08	0.06	-0.08	-0.38	-0.03
December 2015	-0.05	-0.08	0.05	-0.05	-0.39	-0.02
January 2016	-0.06	-0.07	0.04	-0.05	-0.35	-0.03
Year on Year growth rate (%)						
February 2015	-0.47	-1.60	0.79	0.80	-0.75	-0.03
March 2015	-0.57	-1.63	0.82	0.49	-0.98	0.04
April 2015	-0.70	-1.66	0.84	0.10	-1.17	0.09
May 2015	-0.81	-1.72	0.86	-0.32	-1.38	0.08
June 2015	-0.92	-1.79	0.87	-0.73	-1.63	-0.06
July 2015	-0.99	-1.88	0.87	-1.08	-1.86	-0.28
August 2015	-1.01	-1.95	0.87	-1.38	-2.05	-0.52
September 2015	-0.94	-1.96	0.87	-1.60	-2.15	-0.71
October 2015	-0.80	-1.90	0.87	-1.74	-2.18	-0.82
November 2015	-0.64	-1.81	0.86	-1.81	-2.19	-0.83
December 2015	-0.47	-1.71	0.84	-1.85	-2.22	-0.79
January 2016	-0.33	-1.61	0.82	-1.87	-2.31	-0.74