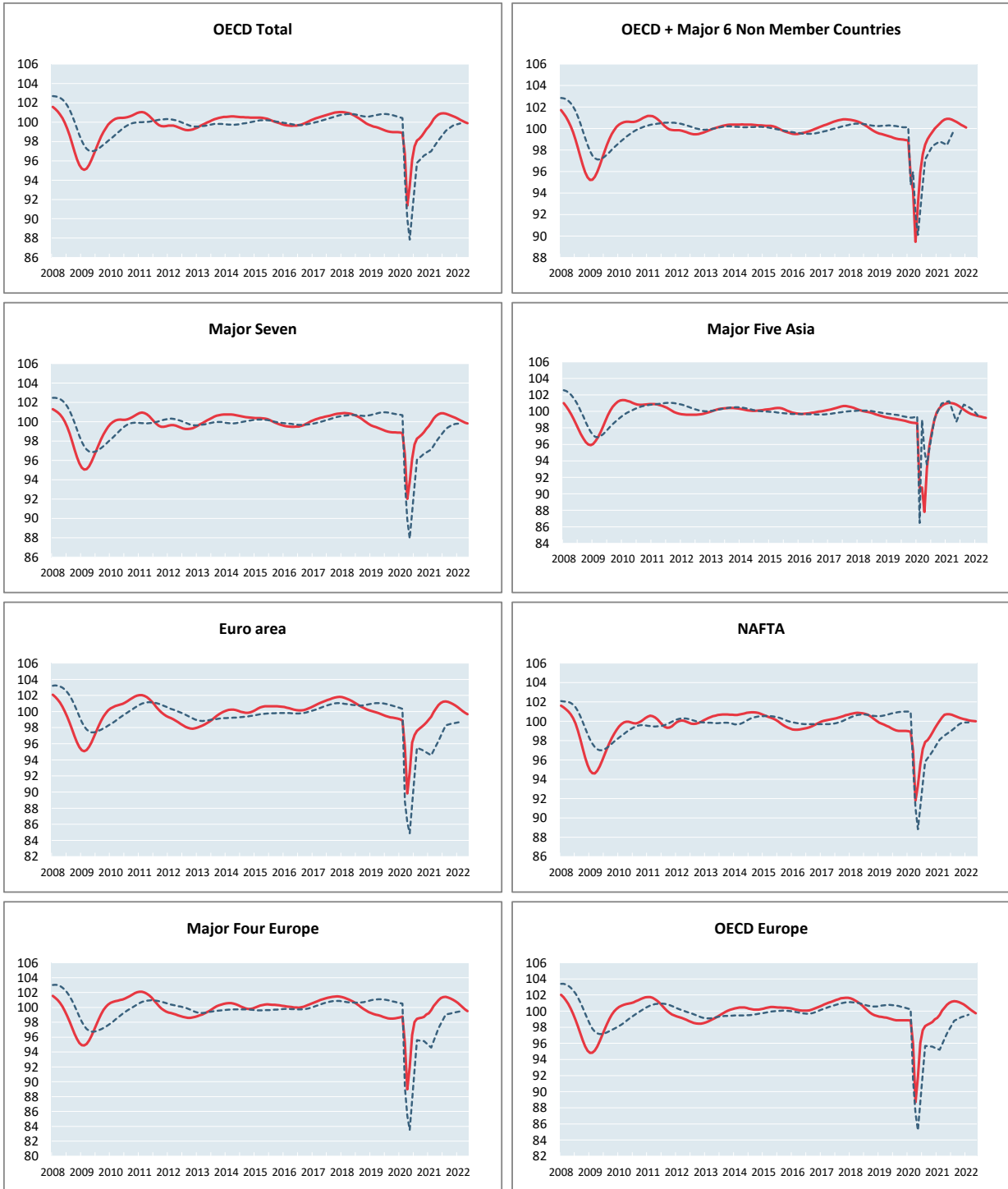


## AREA TOTALS

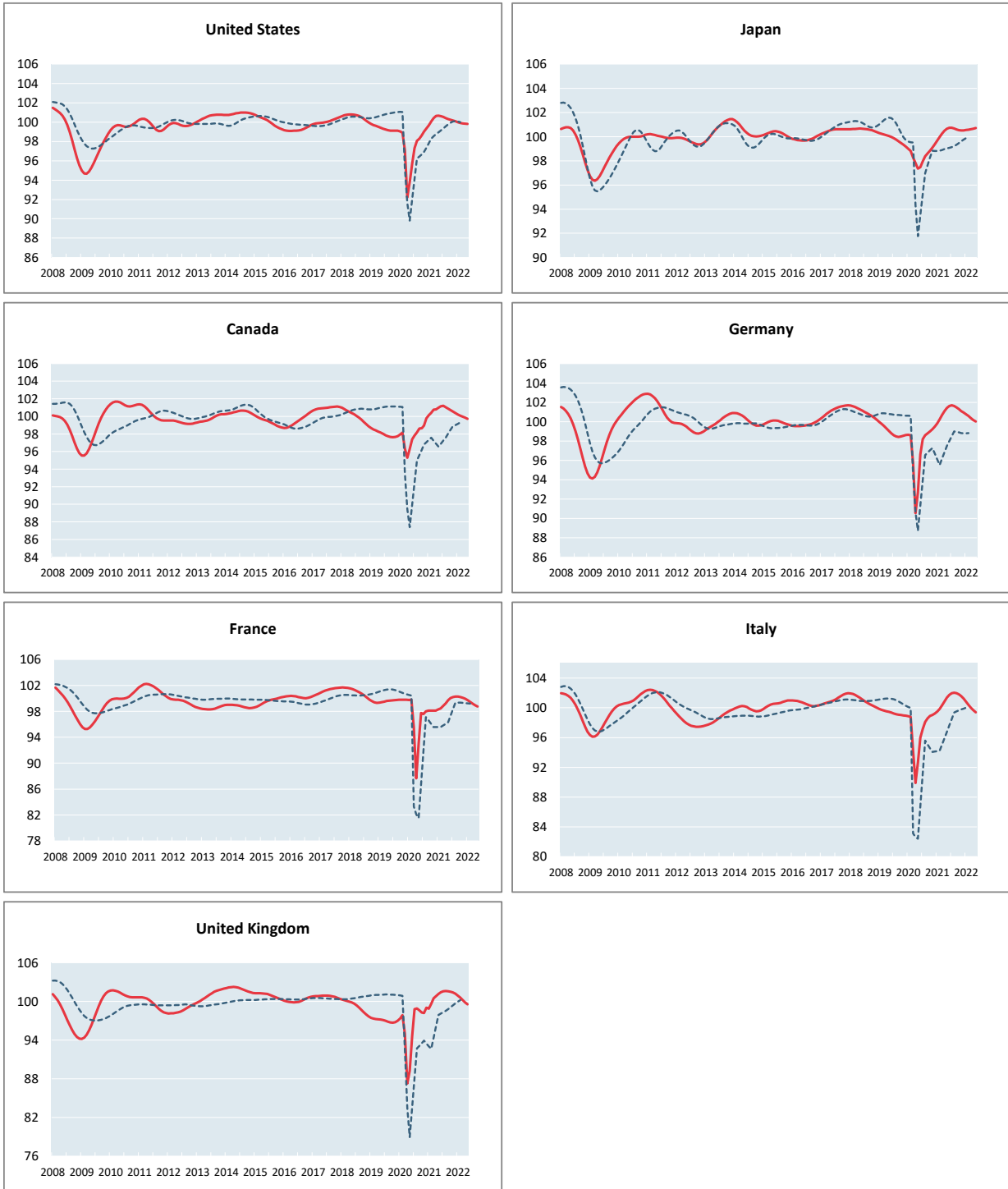
----- Reference series      — Composite leading indicators



	OECD Total	OECD + Major 6 Non Member Countries	Major Seven	Major Five Asia	Euro Area	NAFTA	Major Four Europe	OECD Europe
<b>Amplitude adjusted (long term average =100)</b>								
June 2021	100.89	100.90	100.86	100.65	101.08	100.73	101.25	101.02
July 2021	100.92	100.84	100.86	100.44	101.22	100.66	101.39	101.16
August 2021	100.89	100.73	100.79	100.22	101.24	100.56	101.40	101.21
September 2021	100.81	100.60	100.70	100.00	101.19	100.46	101.33	101.19
October 2021	100.72	100.47	100.60	99.82	101.08	100.37	101.20	101.12
November 2021	100.62	100.34	100.50	99.69	100.92	100.30	101.04	100.99
December 2021	100.51	100.22	100.39	99.59	100.74	100.23	100.84	100.83
January 2022	100.38	100.10	100.26	99.51	100.53	100.17	100.59	100.63
February 2022	100.25	0.00	100.13	99.43	100.30	100.10	100.31	100.40
March 2022	100.11		100.01	99.36	100.06	100.05	100.01	100.16
April 2022	99.99		99.90	99.29	99.85	100.02	99.74	99.93
May 2022	99.88		99.82	99.22	99.67	99.99	99.51	99.73
<b>Month on Month growth rate (%)</b>								
June 2021	0.11	0.00	0.09	-0.17	0.28	0.00	0.28	0.24
July 2021	0.03	-0.06	0.00	-0.20	0.14	-0.06	0.13	0.14
August 2021	-0.04	-0.11	-0.07	-0.22	0.03	-0.10	0.02	0.05
September 2021	-0.07	-0.13	-0.09	-0.22	-0.05	-0.10	-0.07	-0.02
October 2021	-0.09	-0.13	-0.10	-0.18	-0.11	-0.09	-0.13	-0.08
November 2021	-0.10	-0.12	-0.10	-0.13	-0.15	-0.07	-0.16	-0.12
December 2021	-0.11	-0.12	-0.11	-0.10	-0.18	-0.07	-0.20	-0.16
January 2022	-0.12	-0.12	-0.12	-0.08	-0.21	-0.07	-0.24	-0.20
February 2022	-0.13		-0.13	-0.08	-0.23	-0.06	-0.28	-0.23
March 2022	-0.14		-0.13	-0.07	-0.24	-0.05	-0.30	-0.24
April 2022	-0.12		-0.10	-0.07	-0.21	-0.04	-0.27	-0.22
May 2022	-0.11		-0.08	-0.07	-0.18	-0.03	-0.23	-0.20
<b>Year on Year growth rate (%)</b>								
June 2021	4.98	5.14	4.87	5.10	5.11	5.40	5.17	5.16
July 2021	3.52	3.32	3.29	2.90	4.24	3.66	3.43	3.61
August 2021	2.86	2.26	2.60	1.27	3.74	2.78	2.99	3.14
September 2021	2.57	1.60	2.30	0.13	3.39	2.47	2.80	2.92
October 2021	2.20	1.09	1.96	-0.55	3.04	2.00	2.61	2.70
November 2021	1.76	0.64	1.60	-0.95	2.63	1.49	2.36	2.39
December 2021	1.25	0.21	1.13	-1.25	2.11	0.96	1.82	1.86
January 2022	0.84	-0.13	0.73	-1.45	1.55	0.50	1.40	1.48
February 2022	0.35		0.21	-1.58	0.95	0.06	0.70	0.88
March 2022	-0.20		-0.31	-1.65	0.13	-0.35	-0.16	0.09
April 2022	-0.60		-0.69	-1.64	-0.54	-0.64	-0.83	-0.50
May 2022	-0.90		-0.94	-1.59	-1.12	-0.73	-1.45	-1.03

## MAJOR SEVEN OECD COUNTRIES

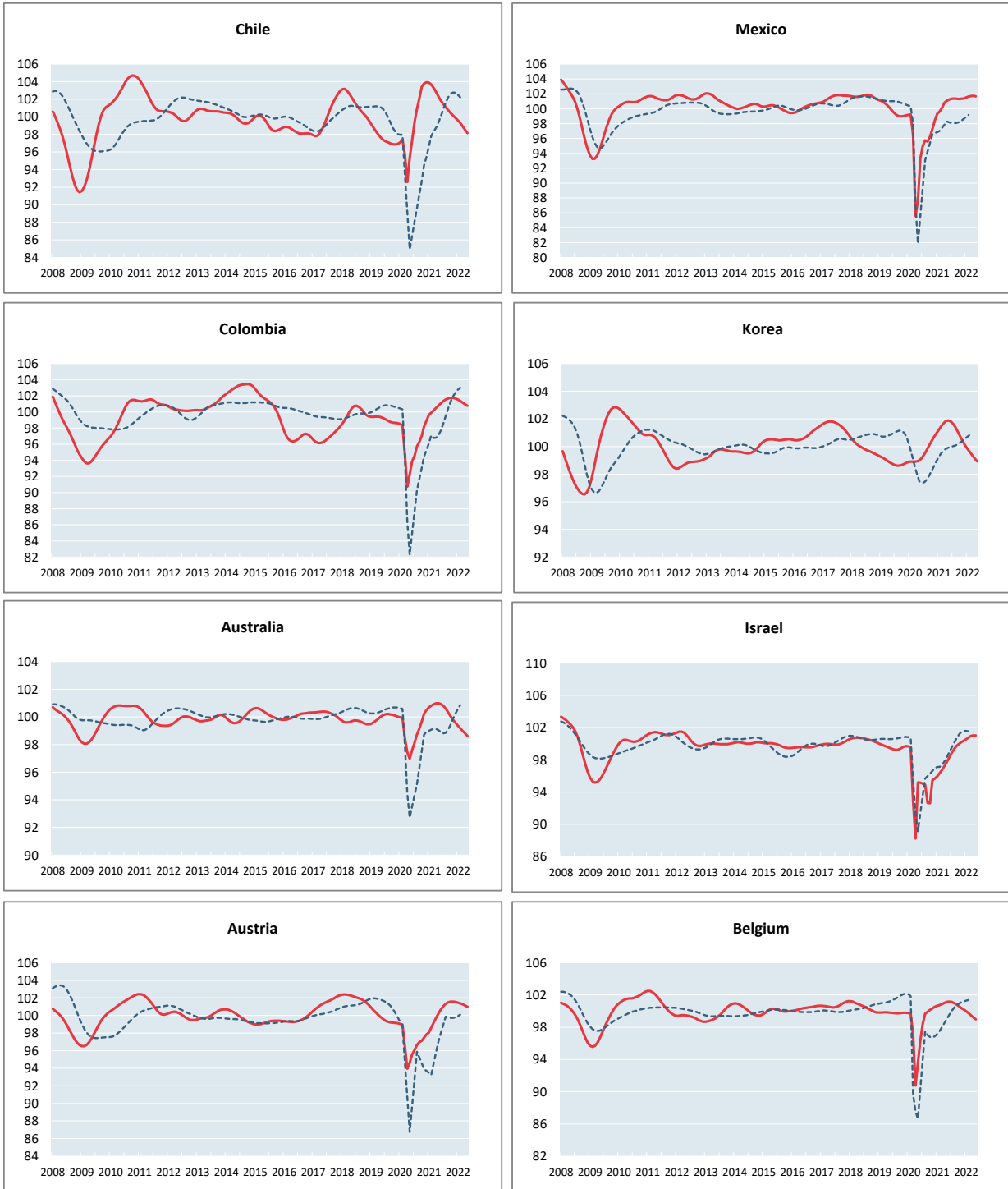
----- Reference series      — Composite leading indicators



	Canada	United States	Japan	France	Germany	Italy	United Kingdom
<b>Amplitude adjusted (long term average =100)</b>							
June 2021	101.14	100.62	100.72	100.05	101.62	101.75	101.42
July 2021	101.20	100.53	100.72	100.21	101.69	101.97	101.57
August 2021	101.04	100.42	100.67	100.28	101.61	102.03	101.62
September 2021	100.88	100.32	100.60	100.28	101.47	101.97	101.59
October 2021	100.72	100.23	100.54	100.21	101.28	101.81	101.51
November 2021	100.55	100.16	100.51	100.10	101.10	101.56	101.38
December 2021	100.38	100.08	100.52	99.94	100.93	101.24	101.18
January 2022	100.23	100.00	100.55	99.73	100.77	100.83	100.91
February 2022	100.09	99.92	100.57	99.47	100.59	100.41	100.58
March 2022	99.97	99.86	100.61	99.20	100.37	100.01	100.21
April 2022	99.85	99.83	100.66	98.95	100.18	99.68	99.86
May 2022	99.73	99.81	100.70	98.74	100.01	99.41	99.55
<b>Month on Month growth rate (%)</b>							
June 2021	0.15	-0.04	0.08	0.35	0.20	0.38	0.25
July 2021	0.05	-0.09	0.00	0.16	0.06	0.21	0.15
August 2021	-0.15	-0.11	-0.05	0.07	-0.07	0.06	0.05
September 2021	-0.16	-0.10	-0.07	-0.01	-0.14	-0.06	-0.03
October 2021	-0.16	-0.09	-0.06	-0.07	-0.18	-0.16	-0.07
November 2021	-0.16	-0.07	-0.03	-0.11	-0.18	-0.24	-0.13
December 2021	-0.17	-0.08	0.01	-0.16	-0.16	-0.32	-0.20
January 2022	-0.16	-0.08	0.03	-0.21	-0.16	-0.40	-0.27
February 2022	-0.13	-0.08	0.03	-0.26	-0.18	-0.42	-0.33
March 2022	-0.12	-0.06	0.04	-0.28	-0.21	-0.40	-0.37
April 2022	-0.12	-0.03	0.04	-0.25	-0.19	-0.33	-0.34
May 2022	-0.12	-0.02	0.04	-0.21	-0.17	-0.27	-0.31
<b>Year on Year growth rate (%)</b>							
June 2021	3.87	5.18	3.35	2.37	5.18	5.99	7.27
July 2021	3.44	3.32	2.84	2.69	3.56	4.95	2.79
August 2021	2.90	2.41	2.34	2.33	3.06	4.01	2.73
September 2021	2.29	2.07	2.02	2.20	2.71	3.44	3.03
October 2021	2.09	1.60	1.73	2.12	2.30	2.94	3.29
November 2021	1.61	1.16	1.44	2.02	1.89	2.55	3.25
December 2021	0.62	0.75	1.16	1.86	1.45	2.02	2.17
January 2022	0.08	0.34	0.89	1.44	0.95	1.34	2.06
February 2022	-0.31	-0.14	0.60	1.03	0.36	0.57	0.98
March 2022	-0.78	-0.54	0.36	0.34	-0.31	-0.33	-0.26
April 2022	-0.95	-0.80	0.17	-0.28	-0.90	-1.19	-0.95
May 2022	-1.25	-0.85	0.05	-0.97	-1.39	-1.93	-1.59

## OTHER OECD COUNTRIES

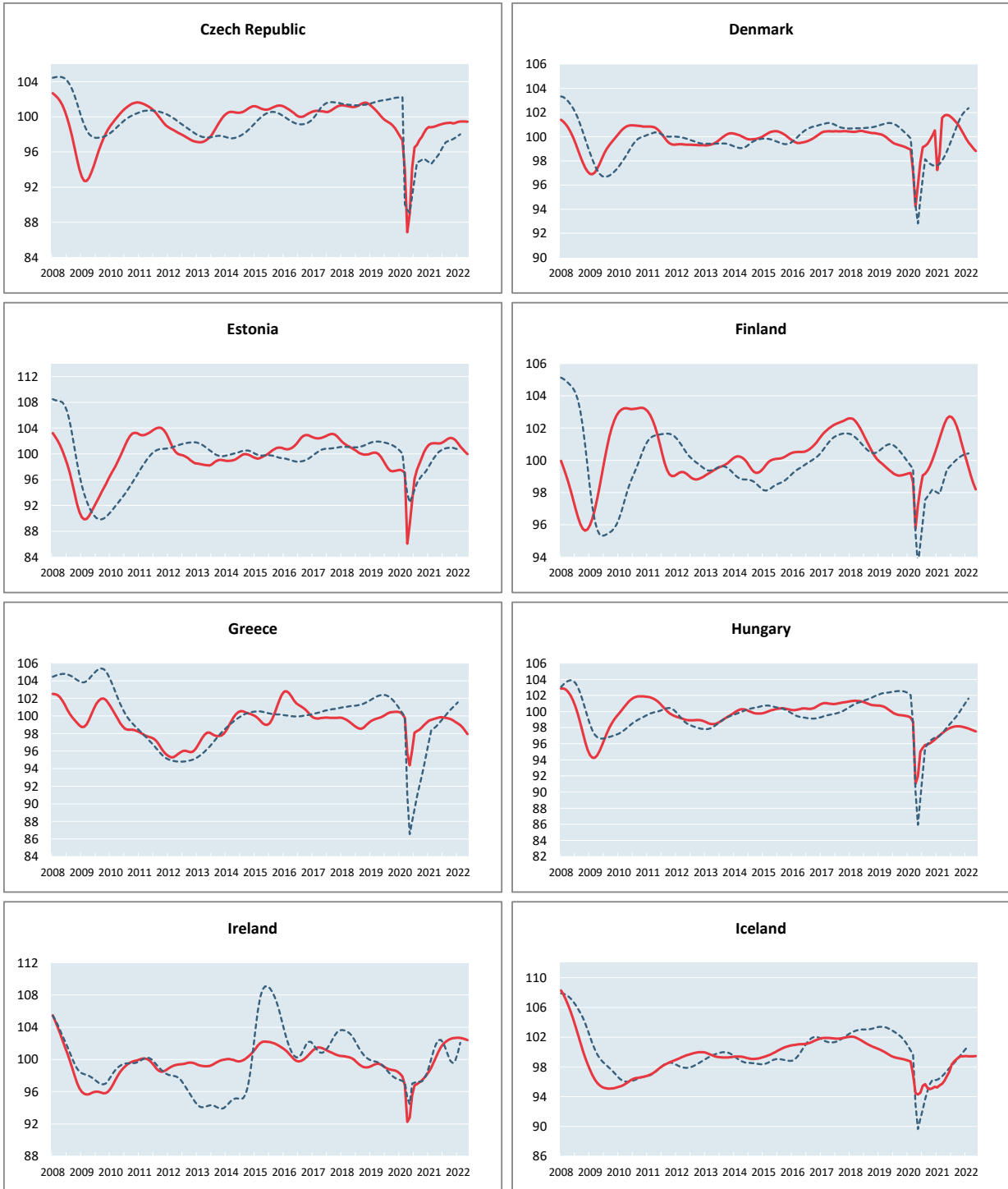
----- Reference series      — Composite leading indicators



	Chile	Mexico	Colombia	Korea	Australia	Israel	Austria	Belgium
<b>Amplitude adjusted (long term average =100)</b>								
June 2021	101.84	101.25	101.08	101.82	100.93	98.32	100.69	101.18
July 2021	101.44	101.35	101.33	101.64	100.81	98.86	101.06	101.13
August 2021	101.08	101.36	101.54	101.37	100.61	99.34	101.33	101.00
September 2021	100.75	101.33	101.68	101.04	100.34	99.74	101.49	100.82
October 2021	100.44	101.30	101.76	100.69	100.06	99.99	101.56	100.61
November 2021	100.15	101.32	101.76	100.37	99.80	100.18	101.57	100.40
December 2021	99.87	101.39	101.68	100.09	99.58	100.36	101.53	100.20
January 2022	99.60	101.50	101.55	99.84	99.38	100.55	101.47	100.00
February 2022	99.30	101.62	101.37	99.60	99.18	100.76	101.38	99.77
March 2022	98.93	101.70	101.16	99.37	98.99	100.96	101.27	99.50
April 2022	98.54	101.72	100.95	99.14	98.81	101.02	101.13	99.23
May 2022	98.15	101.66	100.77	98.92	98.62	101.02	100.99	98.99
<b>Month on Month growth rate (%)</b>								
June 2021	-0.45	0.17	0.28	-0.07	-0.06	0.57	0.46	0.05
July 2021	-0.39	0.09	0.25	-0.18	-0.12	0.55	0.37	-0.04
August 2021	-0.35	0.01	0.20	-0.26	-0.20	0.49	0.27	-0.13
September 2021	-0.33	-0.03	0.14	-0.33	-0.26	0.40	0.15	-0.18
October 2021	-0.31	-0.02	0.07	-0.34	-0.28	0.25	0.07	-0.20
November 2021	-0.29	0.02	0.00	-0.32	-0.26	0.20	0.01	-0.21
December 2021	-0.28	0.06	-0.07	-0.28	-0.22	0.18	-0.04	-0.20
January 2022	-0.27	0.11	-0.13	-0.25	-0.20	0.19	-0.06	-0.20
February 2022	-0.31	0.12	-0.18	-0.24	-0.20	0.20	-0.09	-0.23
March 2022	-0.37	0.08	-0.20	-0.23	-0.19	0.21	-0.11	-0.27
April 2022	-0.40	0.01	-0.21	-0.23	-0.18	0.06	-0.13	-0.28
May 2022	-0.39	-0.06	-0.18	-0.22	-0.19	0.00	-0.14	-0.24
<b>Year on Year growth rate (%)</b>								
June 2021	4.63	8.49	7.65	2.68	3.41	3.31	5.36	5.03
July 2021	2.06	6.71	7.16	2.23	2.73	4.01	5.19	2.78
August 2021	0.17	5.86	6.06	1.64	1.90	4.69	4.85	1.34
September 2021	-1.33	6.00	5.59	0.98	1.20	7.66	4.64	0.89
October 2021	-2.88	5.27	4.87	0.31	0.39	7.96	4.59	0.47
November 2021	-3.51	4.17	3.66	-0.30	-0.41	4.94	4.20	0.07
December 2021	-3.90	3.01	2.84	-0.84	-0.92	4.89	3.78	-0.35
January 2022	-4.13	2.20	1.93	-1.35	-1.29	4.78	3.47	-0.64
February 2022	-4.22	2.01	1.46	-1.83	-1.62	4.60	2.81	-0.98
March 2022	-4.23	1.55	0.96	-2.27	-1.91	4.34	2.10	-1.37
April 2022	-4.16	0.90	0.45	-2.65	-2.15	3.89	1.40	-1.77
May 2022	-4.06	0.58	-0.03	-2.91	-2.34	3.33	0.76	-2.12

**OTHER OECD COUNTRIES**

----- Reference series      — Composite leading indicators

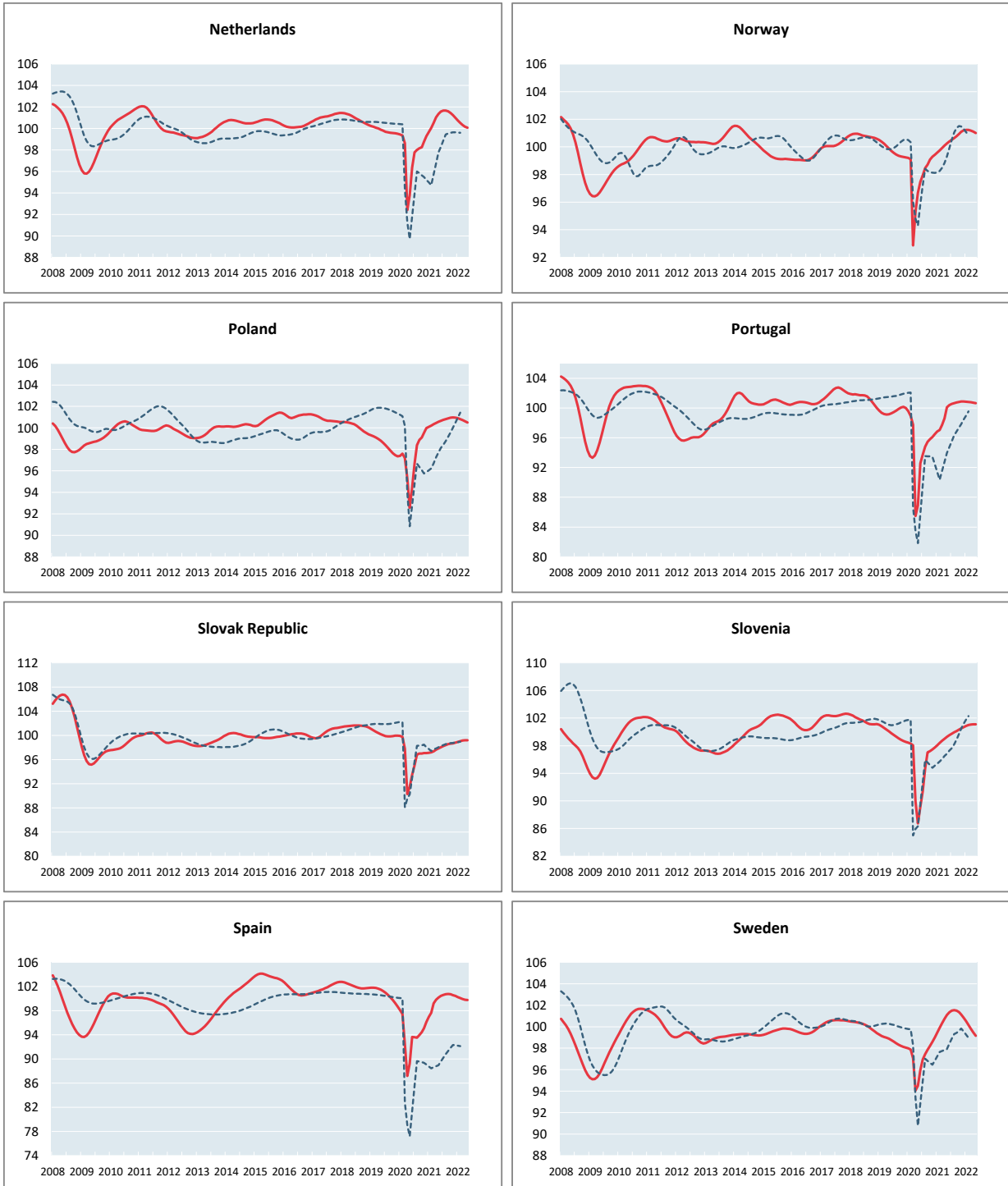


	Czech Republic	Denmark	Estonia	Finland	Greece	Hungary	Iceland	Ireland
<b>Amplitude adjusted (long term average =100)</b>								
June 2021	99.14	101.73	101.65	102.73	99.85	97.93	97.34	101.51
July 2021	99.23	101.57	101.84	102.68	99.84	98.06	98.31	101.92
August 2021	99.27	101.36	102.09	102.48	99.78	98.13	98.73	102.20
September 2021	99.30	101.14	102.36	102.14	99.73	98.16	99.03	102.40
October 2021	99.32	100.89	102.47	101.69	99.65	98.16	99.32	102.55
November 2021	99.25	100.57	102.40	101.17	99.51	98.13	99.41	102.64
December 2021	99.31	100.21	102.14	100.63	99.32	98.07	99.43	102.68
January 2022	99.41	99.85	101.68	100.10	99.15	97.99	99.44	102.69
February 2022	99.46	99.54	101.16	99.57	98.96	97.89	99.41	102.67
March 2022	99.47	99.28	100.75	99.06	98.69	97.77	99.41	102.61
April 2022	99.48	99.04	100.33	98.59	98.33	97.64	99.42	102.51
May 2022	99.45	98.81	99.95	98.19	97.95	97.53	99.45	102.39
<b>Month on Month growth rate (%)</b>								
June 2021	0.08	-0.07	0.04	0.13	0.04	0.18	0.61	0.55
July 2021	0.08	-0.16	0.19	-0.04	-0.01	0.13	1.00	0.39
August 2021	0.05	-0.20	0.25	-0.20	-0.06	0.08	0.43	0.28
September 2021	0.03	-0.22	0.26	-0.33	-0.06	0.03	0.30	0.20
October 2021	0.02	-0.25	0.10	-0.44	-0.08	0.00	0.29	0.15
November 2021	-0.07	-0.31	-0.07	-0.52	-0.14	-0.03	0.08	0.09
December 2021	0.06	-0.36	-0.25	-0.53	-0.18	-0.06	0.02	0.04
January 2022	0.09	-0.36	-0.46	-0.53	-0.18	-0.08	0.01	0.01
February 2022	0.06	-0.31	-0.51	-0.53	-0.19	-0.10	-0.03	-0.02
March 2022	0.01	-0.26	-0.41	-0.52	-0.27	-0.13	0.00	-0.06
April 2022	0.01	-0.24	-0.41	-0.47	-0.36	-0.13	0.01	-0.10
May 2022	-0.03	-0.23	-0.38	-0.41	-0.40	-0.12	0.03	-0.12
<b>Year on Year growth rate (%)</b>								
June 2021	5.30	3.92	9.65	4.55	3.91	3.07	2.99	6.25
July 2021	2.81	2.46	5.93	3.64	1.77	2.70	2.98	5.30
August 2021	2.56	2.16	4.68	3.33	1.54	2.38	3.19	5.44
September 2021	2.01	1.73	3.98	2.80	1.32	2.34	4.10	5.42
October 2021	1.66	1.17	3.07	2.05	0.99	2.19	4.54	5.29
November 2021	1.09	0.48	2.15	1.15	0.57	1.94	4.48	5.07
December 2021	0.70	-0.30	1.19	0.19	0.12	1.62	4.31	4.73
January 2022	0.58	2.68	0.28	-0.79	-0.30	1.26	4.44	4.30
February 2022	0.66	0.98	-0.45	-1.77	-0.62	0.87	4.06	3.72
March 2022	0.63	-2.24	-0.91	-2.74	-0.97	0.48	3.85	3.00
April 2022	0.54	-2.66	-1.29	-3.60	-1.41	0.10	3.41	2.20
May 2022	0.39	-2.94	-1.63	-4.29	-1.87	-0.24	2.79	1.42



## OTHER OECD COUNTRIES

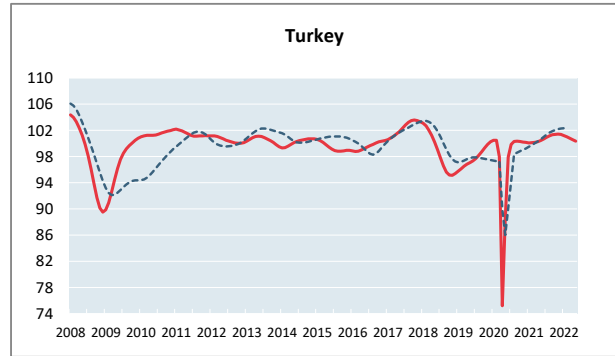
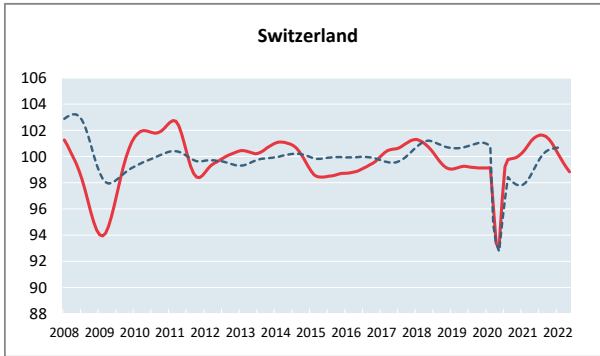
----- Reference series      — Composite leading indicators



	Netherlands	Norway	Poland	Portugal	Slovak Republic	Slovenia	Spain	Sweden
<b>Amplitude adjusted (long term average =100)</b>								
June 2021	101.58	100.40	100.66	100.39	98.05	99.52	100.42	101.35
July 2021	101.68	100.51	100.74	100.56	98.23	99.74	100.61	101.51
August 2021	101.68	100.63	100.82	100.67	98.39	99.95	100.73	101.55
September 2021	101.60	100.77	100.89	100.76	98.55	100.14	100.76	101.50
October 2021	101.45	100.93	100.94	100.83	98.64	100.32	100.71	101.35
November 2021	101.24	101.08	100.97	100.87	98.67	100.50	100.58	101.14
December 2021	101.00	101.19	100.95	100.89	98.79	100.69	100.42	100.85
January 2022	100.75	101.23	100.90	100.87	98.91	100.87	100.25	100.52
February 2022	100.52	101.23	100.83	100.84	99.04	101.01	100.08	100.18
March 2022	100.32	101.18	100.73	100.79	99.14	101.08	99.92	99.82
April 2022	100.17	101.11	100.62	100.73	99.18	101.11	99.81	99.48
May 2022	100.06	101.01	100.50	100.66	99.21	101.10	99.74	99.17
<b>Month on Month growth rate (%)</b>								
June 2021	0.21	0.14	0.09	0.28	0.21	0.24	0.27	0.26
July 2021	0.10	0.12	0.09	0.18	0.18	0.22	0.19	0.16
August 2021	0.00	0.12	0.08	0.11	0.17	0.21	0.11	0.05
September 2021	-0.08	0.14	0.07	0.08	0.16	0.19	0.03	-0.06
October 2021	-0.15	0.16	0.05	0.07	0.09	0.18	-0.05	-0.14
November 2021	-0.21	0.15	0.02	0.05	0.02	0.18	-0.13	-0.22
December 2021	-0.24	0.11	-0.01	0.01	0.12	0.19	-0.16	-0.28
January 2022	-0.25	0.04	-0.05	-0.02	0.13	0.18	-0.17	-0.32
February 2022	-0.23	-0.01	-0.07	-0.03	0.13	0.14	-0.17	-0.34
March 2022	-0.20	-0.04	-0.09	-0.05	0.10	0.08	-0.16	-0.36
April 2022	-0.15	-0.07	-0.11	-0.06	0.04	0.02	-0.11	-0.34
May 2022	-0.11	-0.10	-0.12	-0.07	0.03	-0.01	-0.07	-0.31
<b>Year on Year growth rate (%)</b>								
June 2021	5.42	3.01	6.58	8.46	4.91	11.60	7.24	5.60
July 2021	3.99	2.63	4.23	7.28	3.36	9.11	7.49	4.70
August 2021	3.75	2.19	2.48	6.19	1.61	5.55	7.69	4.21
September 2021	3.51	2.08	2.04	5.56	1.59	3.17	7.25	3.71
October 2021	3.25	1.87	1.85	5.25	1.69	3.18	6.62	3.19
November 2021	2.50	1.81	1.43	4.96	1.66	3.11	5.77	2.59
December 2021	1.73	1.76	0.98	4.54	1.77	3.00	4.47	1.87
January 2022	1.09	1.65	0.80	4.14	1.85	2.85	3.39	1.08
February 2022	0.47	1.48	0.61	3.89	1.89	2.65	2.50	0.28
March 2022	-0.19	1.26	0.39	3.13	1.85	2.38	0.73	-0.51
April 2022	-0.87	1.01	0.16	2.13	1.58	2.11	0.02	-1.25
May 2022	-1.29	0.75	-0.07	0.55	1.39	1.83	-0.41	-1.90

## OTHER OECD COUNTRIES

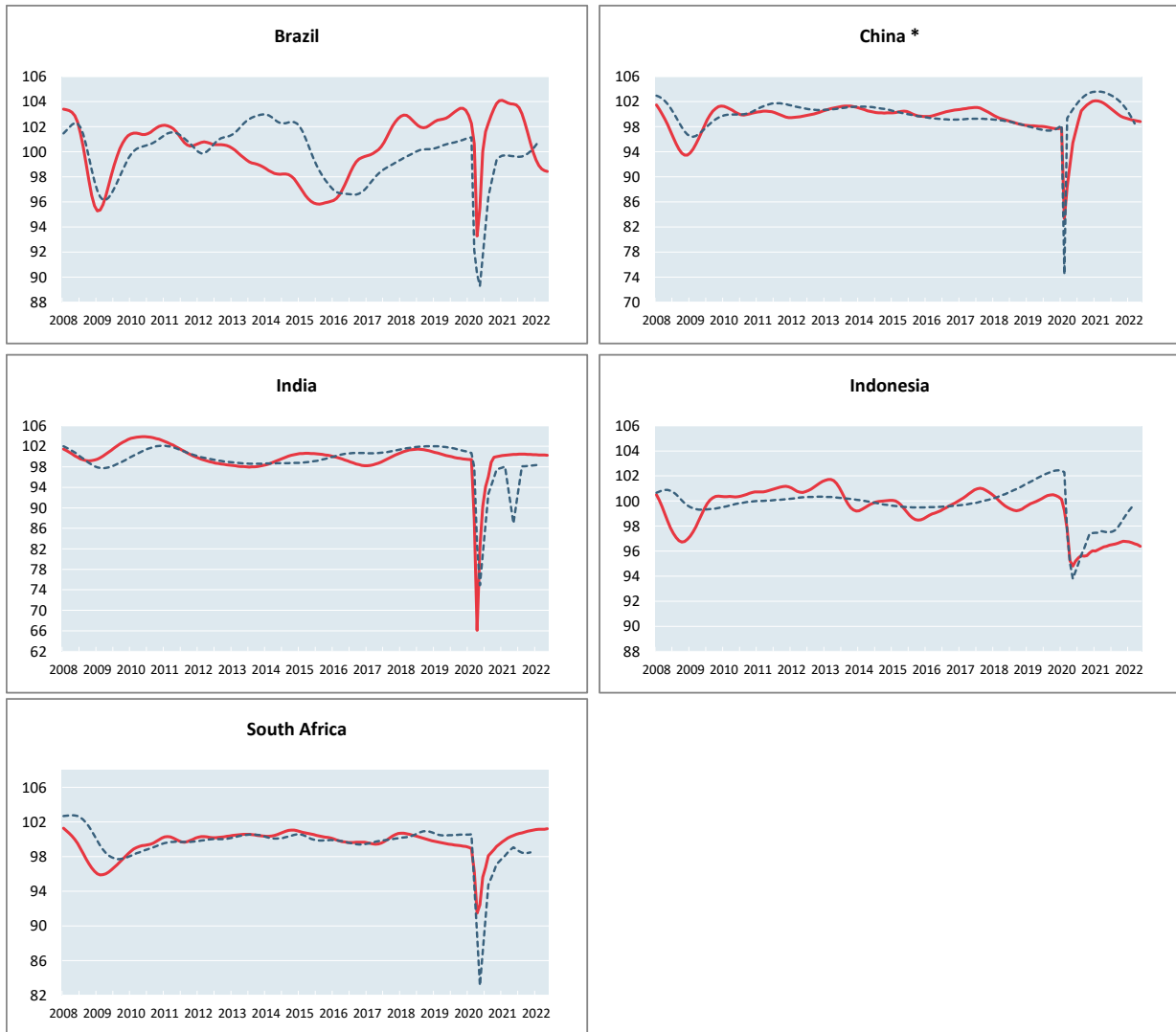
----- Reference series      — Composite leading indicators



	Switzerland	Turkey
<b>Amplitude adjusted (long term average =100)</b>		
June 2021	101.56	100.67
July 2021	101.64	100.93
August 2021	101.64	101.16
September 2021	101.54	101.32
October 2021	101.34	101.41
November 2021	101.04	101.42
December 2021	100.67	101.36
January 2022	100.26	101.23
February 2022	99.86	101.03
March 2022	99.48	100.81
April 2022	99.14	100.59
May 2022	98.84	100.37
<b>Month on Month growth rate (%)</b>		
June 2021	0.15	0.23
July 2021	0.08	0.27
August 2021	-0.01	0.22
September 2021	-0.10	0.16
October 2021	-0.20	0.09
November 2021	-0.29	0.01
December 2021	-0.37	-0.06
January 2022	-0.41	-0.13
February 2022	-0.39	-0.19
March 2022	-0.38	-0.22
April 2022	-0.35	-0.22
May 2022	-0.30	-0.21
<b>Year on Year growth rate (%)</b>		
June 2021	5.14	2.82
July 2021	2.41	1.10
August 2021	1.86	0.84
September 2021	1.71	0.98
October 2021	1.46	1.09
November 2021	1.09	1.19
December 2021	0.58	1.21
January 2022	-0.03	1.13
February 2022	-0.69	0.92
March 2022	-1.39	0.64
April 2022	-2.03	0.32
May 2022	-2.54	-0.06

## MAJOR NON MEMBER COUNTRIES

----- Reference series      — Composite leading indicators



\* The reference series for China is the value added of industry ,at 1995 constant prices,100 million Yuan.

	Brazil	China	India	Indonesia	South Africa
<b>Amplitude adjusted (long term average =100)</b>					
June 2021	103.75	101.10	100.45	96.47	100.56
July 2021	103.51	100.72	100.47	96.51	100.65
August 2021	103.03	100.35	100.47	96.55	100.74
September 2021	102.35	99.99	100.47	96.64	100.82
October 2021	101.55	99.69	100.45	96.72	100.91
November 2021	100.72	99.49	100.43	96.79	101.00
December 2021	99.97	99.34	100.40	96.77	101.06
January 2022	99.35	99.22	100.37	96.74	101.11
February 2022	98.91	99.11	100.35	96.68	101.14
March 2022	98.64	99.02	100.32	96.58	101.16
April 2022	98.49	98.93	100.30	96.51	101.15
May 2022	98.42	98.84	100.27	96.39	101.21
<b>Month on Month growth rate (%)</b>					
June 2021	-0.06	-0.34	0.03	0.10	0.11
July 2021	-0.23	-0.37	0.02	0.04	0.09
August 2021	-0.46	-0.38	0.00	0.04	0.08
September 2021	-0.66	-0.36	-0.01	0.08	0.08
October 2021	-0.78	-0.29	-0.02	0.09	0.09
November 2021	-0.81	-0.21	-0.02	0.07	0.08
December 2021	-0.75	-0.15	-0.03	-0.02	0.07
January 2022	-0.62	-0.12	-0.03	-0.02	0.05
February 2022	-0.44	-0.11	-0.03	-0.07	0.03
March 2022	-0.28	-0.09	-0.03	-0.10	0.02
April 2022	-0.15	-0.09	-0.02	-0.08	-0.01
May 2022	-0.07	-0.09	-0.02	-0.13	0.07
<b>Year on Year growth rate (%)</b>					
June 2021	3.71	3.99	11.30	1.33	5.18
July 2021	1.87	1.80	6.76	1.10	4.05
August 2021	0.75	-0.18	4.59	0.94	2.68
September 2021	-0.55	-1.05	1.62	1.09	2.42
October 2021	-1.84	-1.75	0.55	1.14	2.13
November 2021	-3.01	-2.29	0.43	0.96	1.84
December 2021	-3.95	-2.65	0.31	0.78	1.63
January 2022	-4.57	-2.86	0.19	0.76	1.43
February 2022	-4.91	-2.94	0.09	0.58	1.22
March 2022	-5.06	-2.90	-0.01	0.38	1.02
April 2022	-5.15	-2.77	-0.08	0.19	0.83
May 2022	-5.19	-2.57	-0.15	0.00	0.76