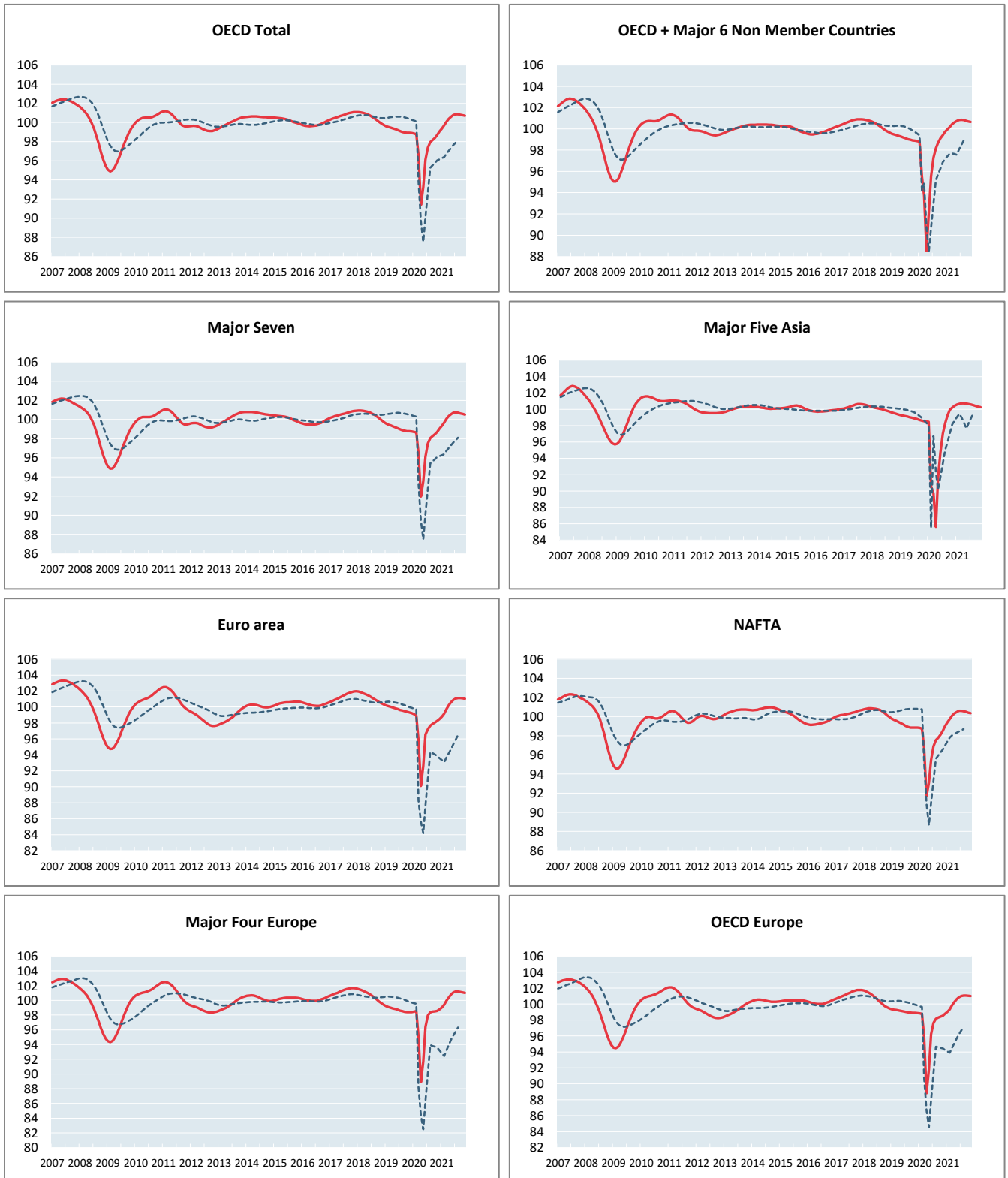


AREA TOTALS

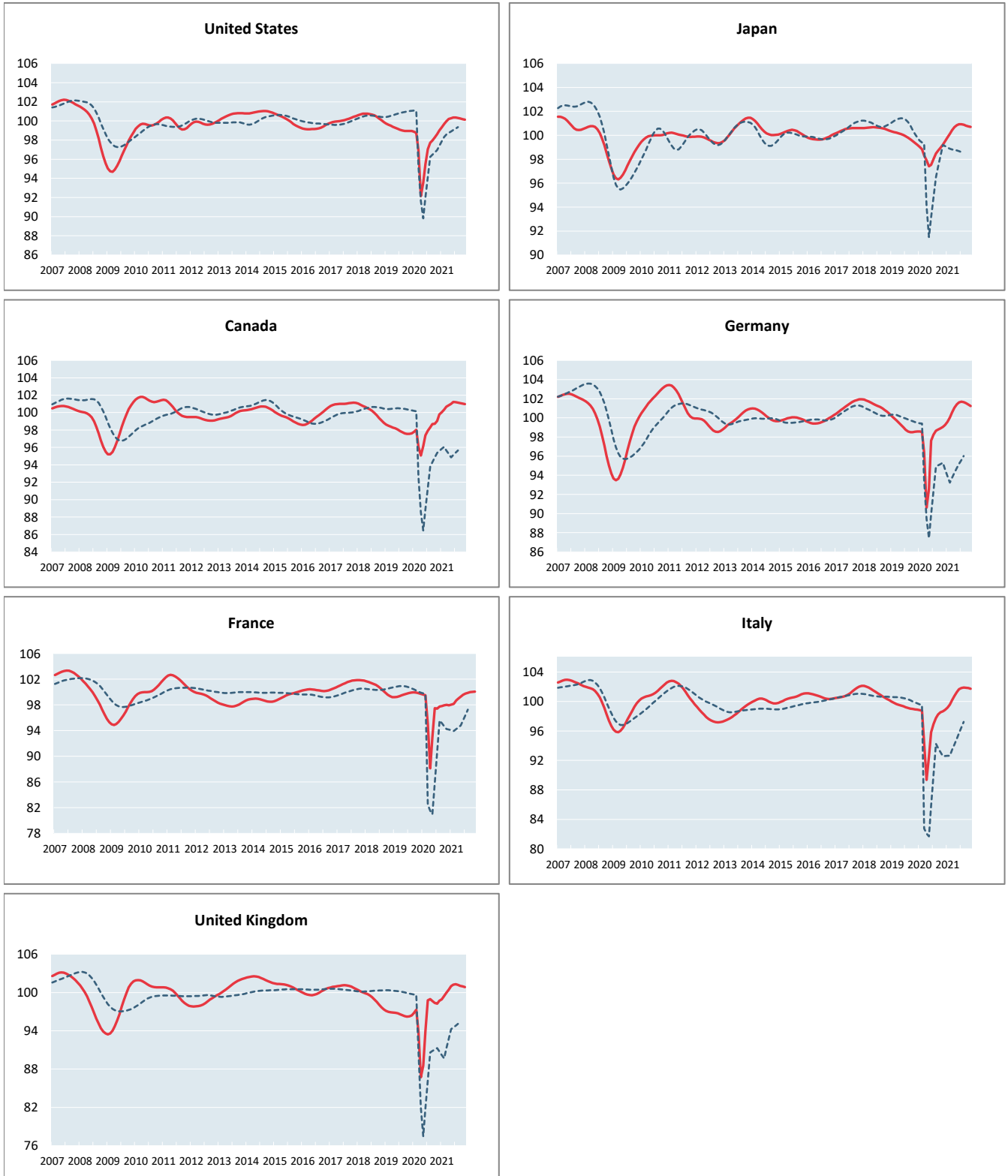
----- Reference series — Composite leading indicators



	OECD Total	OECD + Major 6 Non Member Countries	Major Seven	Major Five Asia	Euro Area	NAFTA	Major Four Europe	OECD Europe
Amplitude adjusted (long term average =100)								
December 2020	99.05	99.71	99.02	100.42	98.48	99.01	98.78	98.79
January 2021	99.36	99.96	99.32	100.56	98.78	99.41	99.01	99.02
February 2021	99.69	100.18	99.67	100.66	99.17	99.76	99.40	99.36
March 2021	100.06	100.41	100.04	100.71	99.71	100.08	99.94	99.82
April 2021	100.38	100.60	100.35	100.72	100.21	100.33	100.40	100.24
May 2021	100.62	100.74	100.56	100.70	100.62	100.48	100.82	100.61
June 2021	100.79	100.83	100.70	100.65	100.90	100.60	101.08	100.87
July 2021	100.85	100.85	100.73	100.58	101.06	100.61	101.20	101.01
August 2021	100.85	100.82	100.70	100.48	101.12	100.56	101.20	101.07
September 2021	100.82	100.77	100.64	100.39	101.12	100.50	101.15	101.07
October 2021	100.77	100.70	100.58	100.31	101.09	100.42	101.08	101.05
November 2021	100.72	100.64	100.51	100.24	101.02	100.35	101.00	101.01
Month on Month growth rate (%)								
December 2020	0.36	0.30	0.33	0.21	0.23	0.50	0.21	0.25
January 2021	0.31	0.24	0.30	0.15	0.31	0.41	0.24	0.23
February 2021	0.33	0.23	0.35	0.10	0.39	0.35	0.39	0.35
March 2021	0.37	0.23	0.38	0.05	0.55	0.32	0.54	0.47
April 2021	0.32	0.19	0.30	0.01	0.50	0.26	0.46	0.42
May 2021	0.24	0.13	0.21	-0.03	0.41	0.14	0.42	0.37
June 2021	0.17	0.09	0.14	-0.05	0.28	0.13	0.25	0.25
July 2021	0.07	0.02	0.03	-0.07	0.16	0.00	0.12	0.15
August 2021	0.00	-0.03	-0.03	-0.09	0.06	-0.04	0.00	0.05
September 2021	-0.04	-0.05	-0.06	-0.09	0.00	-0.07	-0.05	0.00
October 2021	-0.05	-0.06	-0.07	-0.08	-0.04	-0.08	-0.07	-0.02
November 2021	-0.05	-0.06	-0.06	-0.07	-0.06	-0.06	-0.08	-0.04
Year on Year growth rate (%)								
December 2020	0.15	0.88	0.28	1.95	-0.76	0.15	0.36	-0.08
January 2021	0.51	1.18	0.61	2.13	-0.32	0.58	0.56	0.20
February 2021	0.92	4.91	1.02	11.12	0.26	1.01	0.87	0.60
March 2021	3.61	7.13	3.72	12.28	4.09	3.45	5.12	4.12
April 2021	9.86	13.64	9.13	17.65	11.21	9.44	12.95	12.86
May 2021	7.90	9.18	7.48	9.92	8.61	7.92	9.94	9.55
June 2021	4.86	5.54	4.77	6.26	4.50	5.39	4.88	4.84
July 2021	3.57	3.66	3.31	3.66	3.95	3.84	3.32	3.45
August 2021	2.96	2.71	2.70	2.19	3.54	3.09	2.88	2.98
September 2021	2.71	2.10	2.44	1.10	3.31	2.77	2.73	2.82
October 2021	2.42	1.61	2.15	0.37	3.08	2.37	2.61	2.69
November 2021	2.05	1.24	1.84	0.04	2.82	1.86	2.46	2.50

MAJOR SEVEN OECD COUNTRIES

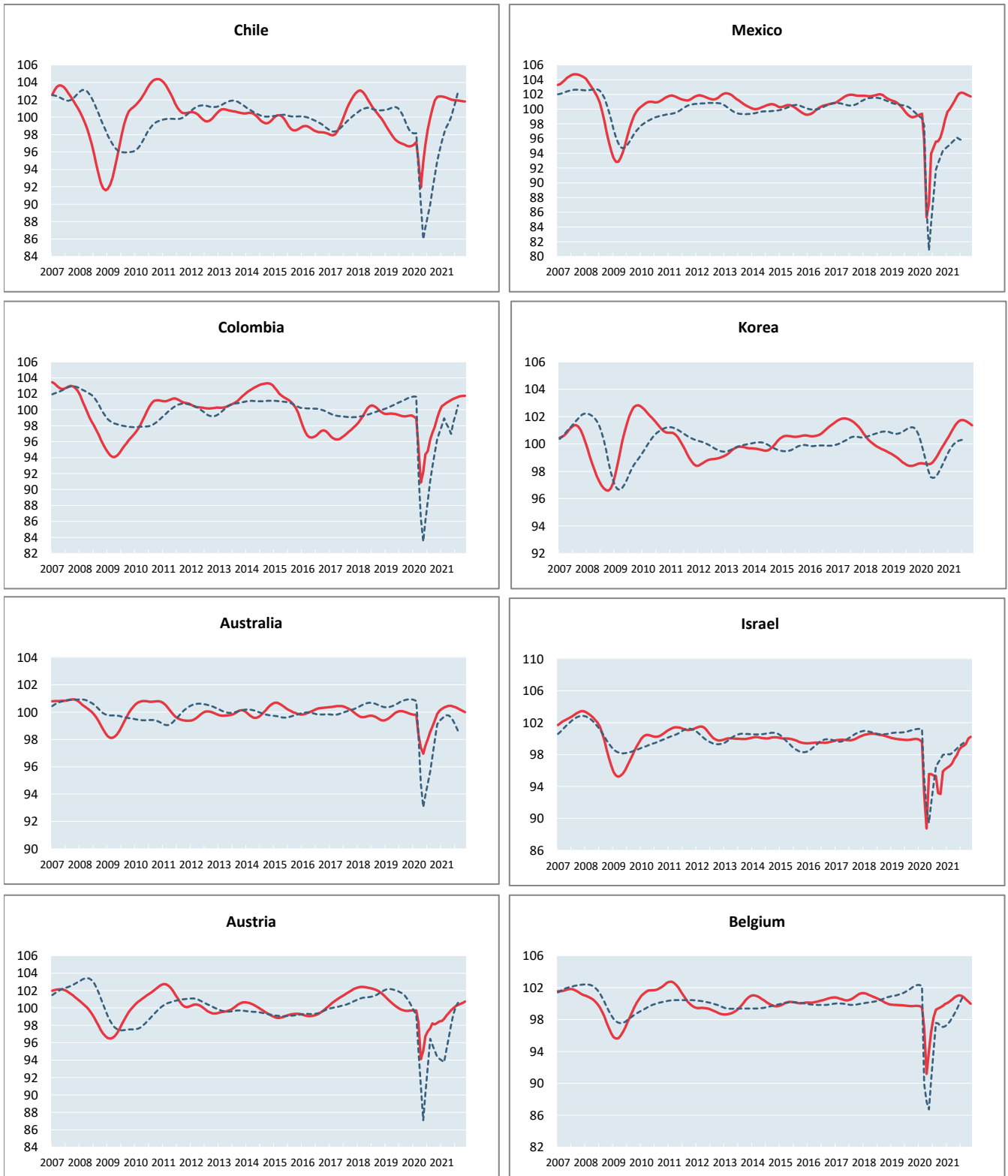
----- Reference series — Composite leading indicators



	Canada	United States	Japan	France	Germany	Italy	United Kingdom
Amplitude adjusted (long term average =100)							
December 2020	99.79	98.99	99.50	97.95	99.26	98.86	98.71
January 2021	100.05	99.33	99.81	98.04	99.58	99.16	98.91
February 2021	100.35	99.67	100.13	98.15	100.04	99.57	99.45
March 2021	100.67	99.97	100.42	98.70	100.57	100.17	99.95
April 2021	100.85	100.20	100.67	98.99	101.05	100.77	100.45
May 2021	101.00	100.28	100.84	99.30	101.41	101.28	101.00
June 2021	101.22	100.37	100.92	99.57	101.62	101.65	101.22
July 2021	101.20	100.36	100.92	99.77	101.69	101.84	101.29
August 2021	101.15	100.32	100.87	99.90	101.64	101.90	101.18
September 2021	101.08	100.26	100.80	99.98	101.53	101.87	101.05
October 2021	101.02	100.19	100.74	100.03	101.39	101.82	100.95
November 2021	100.97	100.13	100.70	100.08	101.23	101.74	100.86
Month on Month growth rate (%)							
December 2020	0.76	0.38	0.29	-0.05	0.21	0.21	0.45
January 2021	0.26	0.34	0.31	0.09	0.33	0.31	0.21
February 2021	0.30	0.34	0.32	0.11	0.46	0.41	0.54
March 2021	0.32	0.30	0.29	0.55	0.53	0.60	0.50
April 2021	0.18	0.23	0.25	0.29	0.48	0.59	0.50
May 2021	0.14	0.09	0.17	0.31	0.36	0.51	0.55
June 2021	0.22	0.08	0.08	0.27	0.21	0.36	0.22
July 2021	-0.02	-0.01	0.00	0.20	0.06	0.19	0.07
August 2021	-0.05	-0.04	-0.05	0.13	-0.05	0.05	-0.11
September 2021	-0.06	-0.06	-0.07	0.08	-0.10	-0.02	-0.13
October 2021	-0.06	-0.07	-0.06	0.05	-0.14	-0.05	-0.10
November 2021	-0.05	-0.06	-0.04	0.05	-0.16	-0.07	-0.09
Year on Year growth rate (%)							
December 2020	2.22	0.05	0.30	-1.78	0.69	-0.03	2.38
January 2021	2.32	0.45	0.79	-1.57	1.01	0.33	2.21
February 2021	2.38	0.92	1.31	-1.35	1.52	0.84	2.18
March 2021	4.75	3.15	2.14	3.88	4.40	6.25	6.47
April 2021	6.08	8.74	2.82	12.34	11.52	12.77	15.84
May 2021	5.03	7.20	3.53	6.83	9.55	9.46	14.08
June 2021	3.94	5.13	3.47	2.14	4.11	6.07	7.79
July 2021	3.34	3.41	2.96	2.43	3.51	5.06	2.56
August 2021	2.90	2.66	2.44	2.21	3.03	4.23	2.24
September 2021	2.42	2.35	2.12	2.20	2.78	3.71	2.40
October 2021	2.35	1.95	1.81	2.16	2.51	3.33	2.62
November 2021	1.95	1.53	1.49	2.12	2.20	3.13	2.64

OTHER OECD COUNTRIES

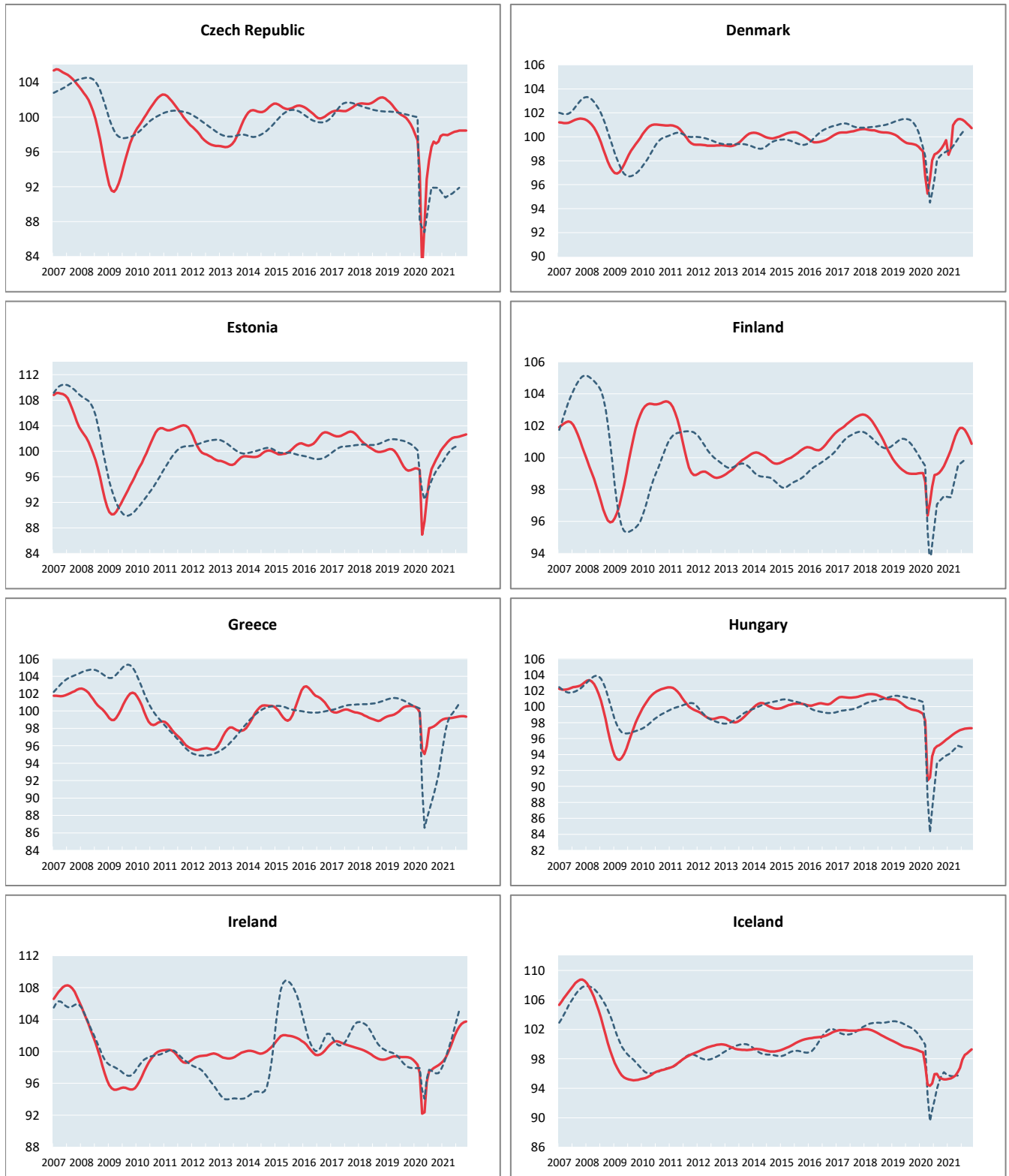
----- Reference series — Composite leading indicators



	Chile	Mexico	Colombia	Korea	Australia	Israel	Austria	Belgium
Amplitude adjusted (long term average =100)								
December 2020	102.39	98.58	99.77	100.27	100.09	96.14	98.43	99.94
January 2021	102.39	99.64	100.43	100.56	100.23	96.36	98.48	100.08
February 2021	102.35	100.04	100.65	100.86	100.33	96.59	98.75	100.27
March 2021	102.26	100.53	100.85	101.16	100.40	96.87	99.11	100.51
April 2021	102.14	101.07	101.03	101.43	100.45	97.47	99.40	100.75
May 2021	102.03	101.69	101.20	101.63	100.45	97.92	99.75	100.95
June 2021	101.97	102.13	101.36	101.73	100.40	98.55	99.96	101.03
July 2021	101.94	102.24	101.50	101.75	100.34	98.95	100.19	100.97
August 2021	101.91	102.17	101.61	101.70	100.25	99.11	100.34	100.79
September 2021	101.88	102.03	101.68	101.60	100.18	99.33	100.46	100.53
October 2021	101.85	101.86	101.73	101.48	100.09	100.00	100.58	100.25
November 2021	101.81	101.74	101.75	101.36	100.00	100.21	100.72	99.99
Month on Month growth rate (%)								
December 2020	0.06	1.32	0.81	0.27	0.23	0.26	0.14	0.24
January 2021	0.01	1.07	0.66	0.29	0.13	0.23	0.05	0.14
February 2021	-0.05	0.41	0.22	0.30	0.10	0.23	0.27	0.19
March 2021	-0.09	0.49	0.20	0.30	0.07	0.30	0.36	0.23
April 2021	-0.12	0.53	0.18	0.27	0.04	0.62	0.29	0.24
May 2021	-0.10	0.62	0.17	0.19	0.00	0.46	0.35	0.19
June 2021	-0.06	0.42	0.16	0.10	-0.04	0.64	0.21	0.08
July 2021	-0.03	0.11	0.14	0.02	-0.06	0.41	0.24	-0.06
August 2021	-0.02	-0.07	0.11	-0.05	-0.09	0.16	0.15	-0.18
September 2021	-0.03	-0.14	0.07	-0.09	-0.08	0.23	0.12	-0.25
October 2021	-0.03	-0.17	0.04	-0.12	-0.09	0.67	0.11	-0.28
November 2021	-0.03	-0.11	0.02	-0.12	-0.09	0.21	0.14	-0.27
Year on Year growth rate (%)								
December 2020	5.89	-0.53	0.49	1.73	0.25	-3.80	-1.27	0.23
January 2021	5.75	0.39	1.29	2.00	0.42	-3.46	-1.24	0.42
February 2021	5.35	0.68	1.76	2.32	0.53	-3.04	-0.97	0.71
March 2021	7.61	4.96	5.73	2.67	2.07	4.08	0.82	3.64
April 2021	11.09	18.46	11.18	2.97	3.13	9.84	5.62	10.49
May 2021	7.60	16.61	9.76	3.13	3.60	2.47	4.93	7.33
June 2021	5.27	8.70	7.36	3.11	2.94	3.13	3.31	4.73
July 2021	3.35	7.88	7.05	2.91	2.37	3.75	2.97	2.80
August 2021	1.99	6.89	5.53	2.58	1.73	4.00	2.72	1.58
September 2021	0.92	6.68	4.74	2.18	1.27	6.61	2.30	1.15
October 2021	-0.08	5.88	3.94	1.76	0.72	7.45	2.53	0.71
November 2021	-0.50	4.57	2.81	1.36	0.13	4.50	2.47	0.28

OTHER OECD COUNTRIES

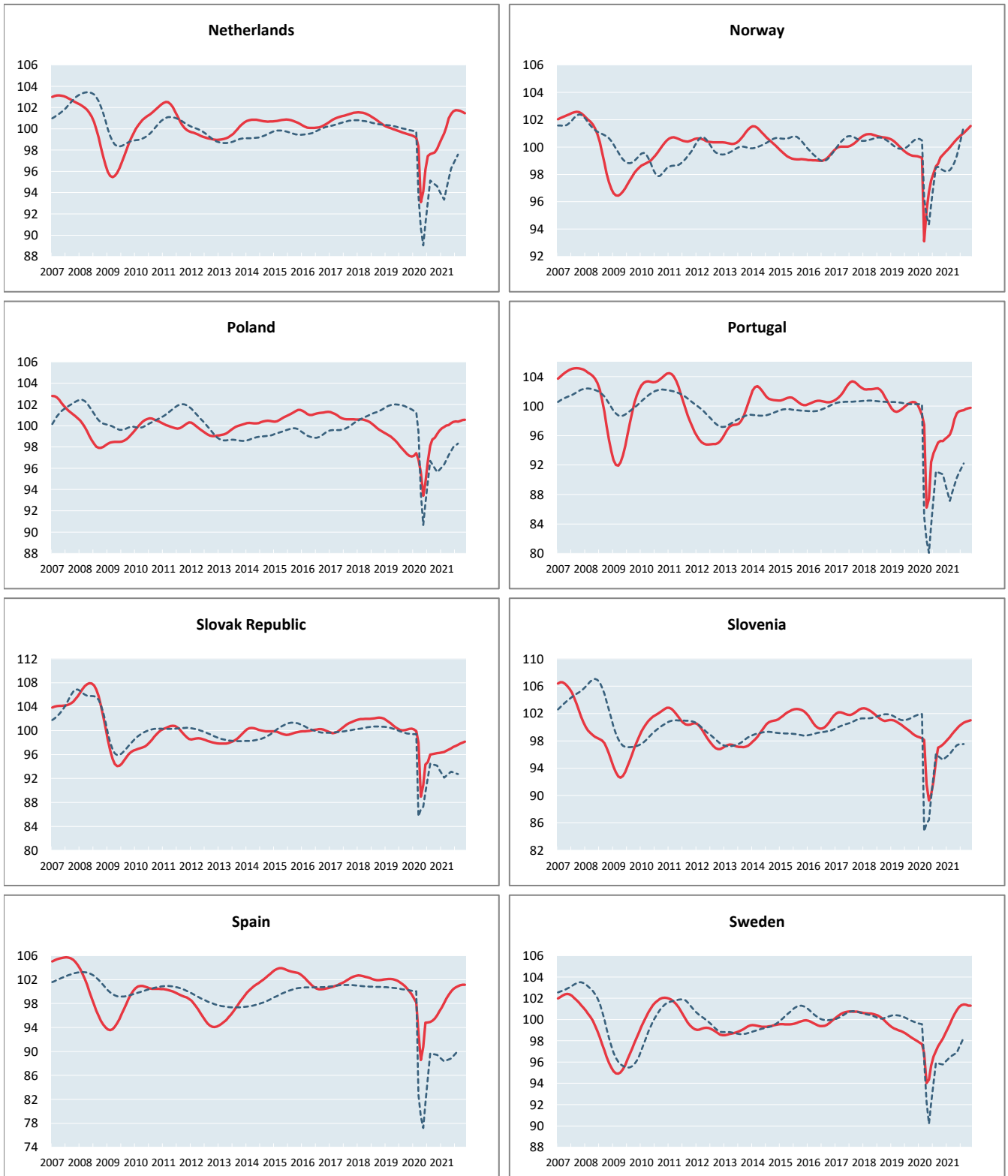
----- Reference series — Composite leading indicators



	Czech Republic	Denmark	Estonia	Finland	Greece	Hungary	Iceland	Ireland
Amplitude adjusted (long term average =100)								
December 2020	97.84	99.71	100.05	99.77	98.89	95.84	95.21	98.48
January 2021	97.99	98.50	100.58	100.11	99.06	96.06	95.26	98.75
February 2021	97.97	99.01	101.03	100.50	99.13	96.30	95.34	99.16
March 2021	97.93	100.95	101.44	100.93	99.16	96.53	95.49	99.73
April 2021	98.09	101.28	101.81	101.36	99.19	96.74	95.73	100.42
May 2021	98.21	101.46	102.06	101.69	99.23	96.92	96.23	101.19
June 2021	98.33	101.49	102.19	101.86	99.28	97.06	96.78	101.96
July 2021	98.38	101.42	102.24	101.87	99.33	97.16	97.90	102.60
August 2021	98.46	101.28	102.28	101.74	99.37	97.23	98.53	103.11
September 2021	98.46	101.11	102.40	101.52	99.40	97.27	98.72	103.46
October 2021	98.47	100.92	102.51	101.22	99.39	97.30	99.01	103.66
November 2021	98.46	100.72	102.64	100.87	99.34	97.30	99.28	103.76
Month on Month growth rate (%)								
December 2020	0.67	0.36	0.68	0.30	0.23	0.25	0.03	0.21
January 2021	0.16	-1.22	0.53	0.34	0.17	0.23	0.05	0.28
February 2021	-0.02	0.52	0.45	0.39	0.07	0.24	0.09	0.42
March 2021	-0.04	1.96	0.40	0.43	0.03	0.24	0.15	0.57
April 2021	0.16	0.32	0.36	0.43	0.03	0.22	0.25	0.70
May 2021	0.12	0.18	0.25	0.32	0.04	0.19	0.53	0.76
June 2021	0.12	0.03	0.12	0.17	0.05	0.14	0.57	0.76
July 2021	0.05	-0.07	0.05	0.01	0.06	0.10	1.15	0.63
August 2021	0.08	-0.14	0.04	-0.12	0.04	0.07	0.65	0.50
September 2021	0.00	-0.17	0.11	-0.22	0.03	0.05	0.19	0.34
October 2021	0.01	-0.19	0.11	-0.30	-0.01	0.03	0.29	0.20
November 2021	-0.01	-0.20	0.12	-0.34	-0.05	0.01	0.27	0.10
Year on Year growth rate (%)								
December 2020	-0.83	0.54	2.95	0.77	-1.67	-3.62	-3.95	-0.50
January 2021	-0.03	-0.49	3.33	1.09	-1.42	-3.26	-3.78	0.06
February 2021	0.64	0.24	3.86	1.48	-1.12	-2.84	-3.58	0.84
March 2021	4.48	4.40	4.50	2.46	-0.68	-1.76	-1.72	2.52
April 2021	19.06	6.33	17.11	5.18	3.81	6.60	1.32	8.92
May 2021	11.96	5.15	14.63	4.62	4.39	6.37	2.01	9.56
June 2021	5.87	3.54	10.72	3.75	3.47	3.50	2.24	6.07
July 2021	3.47	2.93	7.10	2.99	1.33	2.55	2.08	5.22
August 2021	1.93	2.69	5.24	2.82	1.27	2.30	2.68	5.56
September 2021	1.28	2.34	4.59	2.49	1.20	2.20	3.46	5.68
October 2021	1.55	1.89	3.89	2.01	1.00	2.02	3.91	5.68
November 2021	1.31	1.38	3.28	1.41	0.70	1.78	4.30	5.59

OTHER OECD COUNTRIES

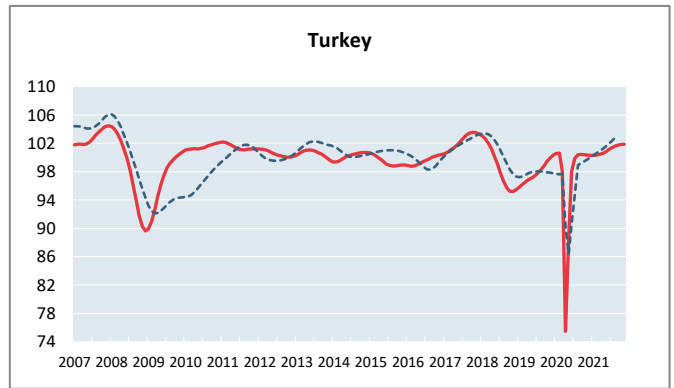
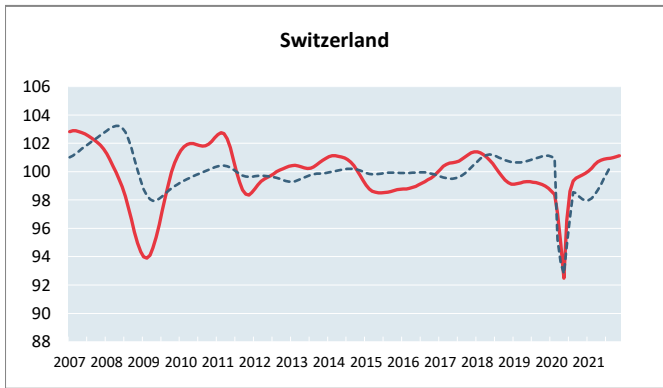
----- Reference series — Composite leading indicators



	Netherlands	Norway	Poland	Portugal	Slovak Republic	Slovenia	Spain	Sweden
Amplitude adjusted (long term average =100)								
December 2020	98.59	99.61	99.52	95.53	96.27	97.78	96.70	98.64
January 2021	99.10	99.78	99.75	95.79	96.34	98.15	97.35	99.10
February 2021	99.56	99.97	99.87	96.11	96.44	98.55	98.11	99.57
March 2021	100.16	100.18	100.02	96.85	96.61	98.98	98.83	100.03
April 2021	100.98	100.38	100.07	98.21	96.82	99.39	99.48	100.48
May 2021	101.39	100.57	100.24	99.02	97.04	99.78	100.01	100.87
June 2021	101.64	100.74	100.37	99.27	97.27	100.12	100.41	101.16
July 2021	101.75	100.89	100.40	99.39	97.45	100.42	100.71	101.34
August 2021	101.74	101.04	100.38	99.46	97.64	100.65	100.92	101.41
September 2021	101.68	101.19	100.44	99.60	97.83	100.81	101.07	101.39
October 2021	101.59	101.36	100.55	99.70	98.01	100.91	101.14	101.31
November 2021	101.47	101.53	100.55	99.77	98.15	101.00	101.16	101.30
Month on Month growth rate (%)								
December 2020	0.48	0.17	0.30	0.29	0.06	0.33	0.68	0.43
January 2021	0.52	0.18	0.23	0.28	0.07	0.37	0.67	0.46
February 2021	0.47	0.19	0.12	0.33	0.11	0.41	0.79	0.47
March 2021	0.60	0.21	0.15	0.77	0.17	0.43	0.73	0.47
April 2021	0.82	0.20	0.05	1.39	0.22	0.42	0.66	0.45
May 2021	0.40	0.19	0.17	0.83	0.22	0.38	0.54	0.39
June 2021	0.25	0.17	0.13	0.25	0.24	0.35	0.40	0.29
July 2021	0.10	0.15	0.03	0.12	0.19	0.30	0.30	0.18
August 2021	0.00	0.15	-0.02	0.07	0.19	0.22	0.21	0.07
September 2021	-0.06	0.15	0.06	0.14	0.20	0.15	0.14	-0.02
October 2021	-0.10	0.17	0.10	0.11	0.19	0.10	0.07	-0.07
November 2021	-0.12	0.17	0.01	0.07	0.14	0.09	0.02	-0.02
Year on Year growth rate (%)								
December 2020	-0.81	0.29	2.49	-4.69	-4.04	-0.84	-2.84	0.69
January 2021	-0.20	0.51	2.66	-3.84	-3.86	-0.36	-1.56	1.29
February 2021	0.40	0.76	2.53	-2.72	-3.48	0.20	-0.05	1.93
March 2021	1.86	7.59	3.28	-0.60	-1.39	0.87	6.11	3.33
April 2021	8.47	5.27	4.67	13.91	8.84	8.44	12.32	6.87
May 2021	7.75	3.98	7.30	13.27	6.76	11.76	10.21	6.91
June 2021	5.69	3.26	6.06	7.42	3.13	11.07	5.93	5.75
July 2021	4.41	2.87	3.91	6.17	2.85	9.01	6.17	5.01
August 2021	4.22	2.49	2.31	5.39	1.73	5.89	6.31	4.51
September 2021	4.09	2.44	1.76	4.79	1.83	3.92	6.26	3.99
October 2021	3.89	2.14	1.70	4.63	1.94	3.83	5.90	3.54
November 2021	3.41	2.11	1.34	4.75	2.02	3.63	5.32	3.13

OTHER OECD COUNTRIES

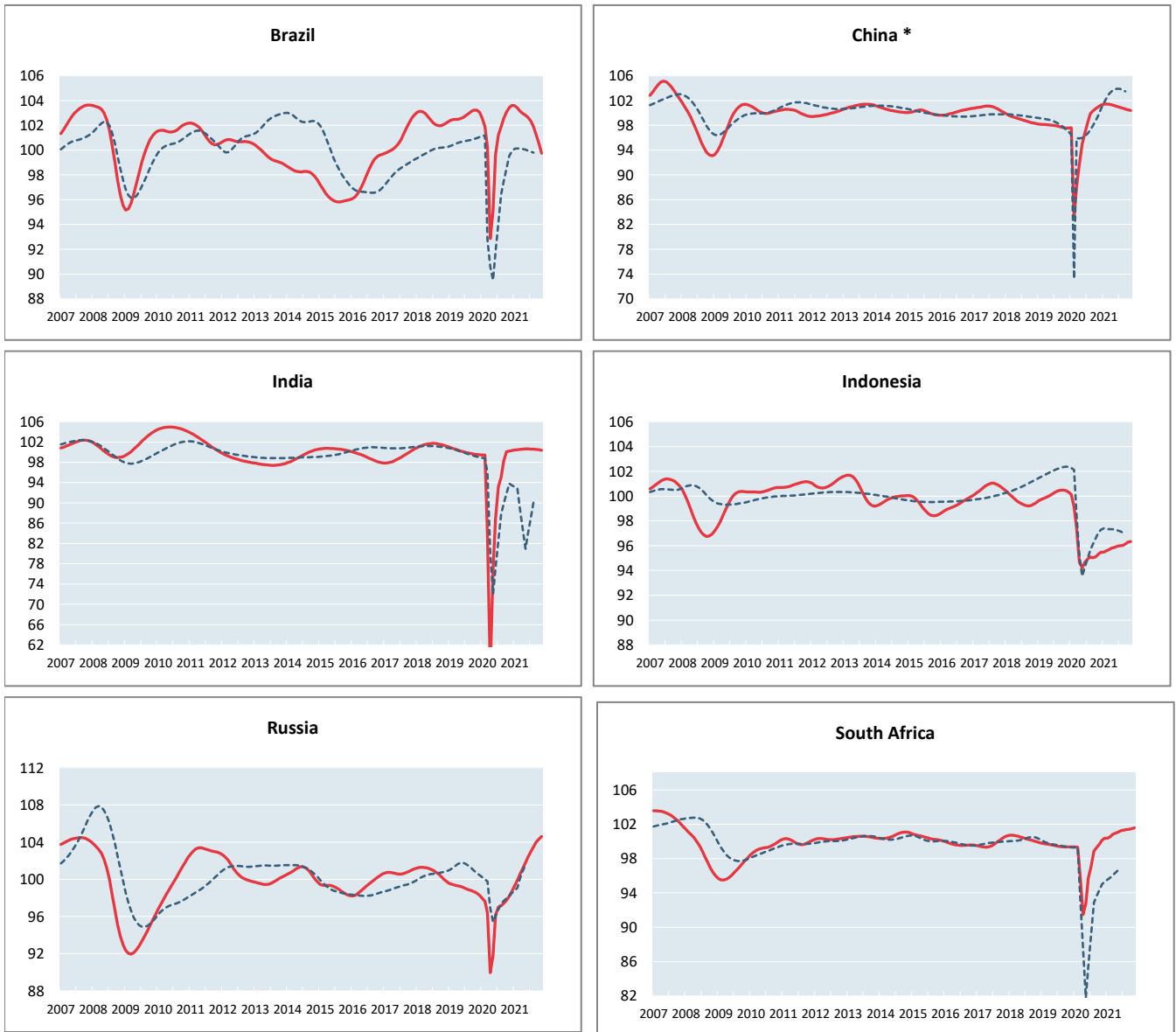
----- Reference series — Composite leading indicators



	Switzerland	Turkey
Amplitude adjusted (long term average =100)		
December 2020	99.89	100.30
January 2021	100.05	100.28
February 2021	100.25	100.33
March 2021	100.49	100.43
April 2021	100.69	100.58
May 2021	100.81	100.81
June 2021	100.88	101.09
July 2021	100.92	101.39
August 2021	100.95	101.61
September 2021	100.99	101.75
October 2021	101.05	101.83
November 2021	101.12	101.86
Month on Month growth rate (%)		
December 2020	0.13	-0.05
January 2021	0.16	-0.02
February 2021	0.20	0.04
March 2021	0.24	0.10
April 2021	0.20	0.15
May 2021	0.12	0.23
June 2021	0.07	0.28
July 2021	0.04	0.29
August 2021	0.03	0.22
September 2021	0.05	0.14
October 2021	0.06	0.08
November 2021	0.07	0.04
Year on Year growth rate (%)		
December 2020	1.08	-0.06
January 2021	1.44	-0.30
February 2021	1.89	-0.27
March 2021	3.52	2.41
April 2021	6.04	33.28
May 2021	9.00	13.76
June 2021	4.46	3.18
July 2021	2.33	1.48
August 2021	1.62	1.20
September 2021	1.47	1.33
October 2021	1.40	1.42
November 2021	1.37	1.50

MAJOR NON MEMBER COUNTRIES

----- Reference series — Composite leading indicators



* The reference series for China is the value added of industry ,at 1995 constant prices,100 million Yuan.

	Brazil	China	India	Indonesia	Russia	South Africa
Amplitude adjusted (long term average =100)						
December 2020	103.62	101.25	100.31	95.48	98.70	100.37
January 2021	103.59	101.39	100.41	95.47	99.28	100.37
February 2021	103.39	101.42	100.50	95.58	99.91	100.55
March 2021	103.15	101.39	100.56	95.69	100.54	100.83
April 2021	102.96	101.29	100.60	95.81	101.18	100.97
May 2021	102.81	101.17	100.63	95.86	101.80	101.10
June 2021	102.63	101.04	100.63	95.96	102.41	101.26
July 2021	102.34	100.91	100.61	96.00	102.97	101.32
August 2021	101.86	100.76	100.58	96.02	103.50	101.39
September 2021	101.25	100.62	100.53	96.14	104.00	101.41
October 2021	100.53	100.49	100.47	96.30	104.34	101.49
November 2021	99.75	100.41	100.40	96.35	104.60	101.57
Month on Month growth rate (%)						
December 2020	0.18	0.23	0.11	0.16	0.53	0.22
January 2021	-0.03	0.14	0.10	-0.02	0.59	0.00
February 2021	-0.19	0.04	0.08	0.12	0.63	0.18
March 2021	-0.23	-0.04	0.06	0.12	0.64	0.29
April 2021	-0.19	-0.09	0.04	0.12	0.63	0.13
May 2021	-0.15	-0.12	0.02	0.06	0.62	0.13
June 2021	-0.17	-0.13	0.00	0.10	0.59	0.16
July 2021	-0.29	-0.14	-0.02	0.04	0.55	0.06
August 2021	-0.46	-0.14	-0.03	0.02	0.51	0.07
September 2021	-0.61	-0.14	-0.05	0.12	0.48	0.02
October 2021	-0.71	-0.12	-0.06	0.17	0.32	0.08
November 2021	-0.78	-0.08	-0.07	0.05	0.26	0.08
Year on Year growth rate (%)						
December 2020	0.56	3.79	0.84	-4.81	0.42	1.01
January 2021	0.97	3.90	0.98	-4.65	1.33	1.02
February 2021	1.47	22.11	1.08	-3.58	2.34	1.23
March 2021	2.90	15.08	20.27	-1.77	4.34	5.14
April 2021	10.88	10.42	77.50	1.20	12.48	10.38
May 2021	8.09	6.52	30.73	1.75	10.88	9.01
June 2021	3.00	4.52	15.70	1.39	6.50	5.75
July 2021	1.11	2.62	7.97	1.15	6.14	4.33
August 2021	-0.02	0.91	5.81	0.96	6.51	2.55
September 2021	-1.26	0.30	2.36	1.16	6.77	2.15
October 2021	-2.46	-0.20	0.39	1.27	6.75	1.84
November 2021	-3.56	-0.59	0.20	1.07	6.55	1.42