

Unemployment rate in the OECD declines slightly to 5% in April 2022

The unemployment rate in the OECD fell further to 5.0% in April 2022, from 5.1% in March. This continues a positive trend for the OECD, which has now recorded 12 months of falling unemployment (Figure 1).

The unemployment rate was equal to or below the pre-pandemic rate in three quarters of OECD countries in April (Figure 2). Moreover, the number of unemployed workers in the OECD also continued to fall, reaching 34.0 million, 0.5 million below the pre-pandemic level.

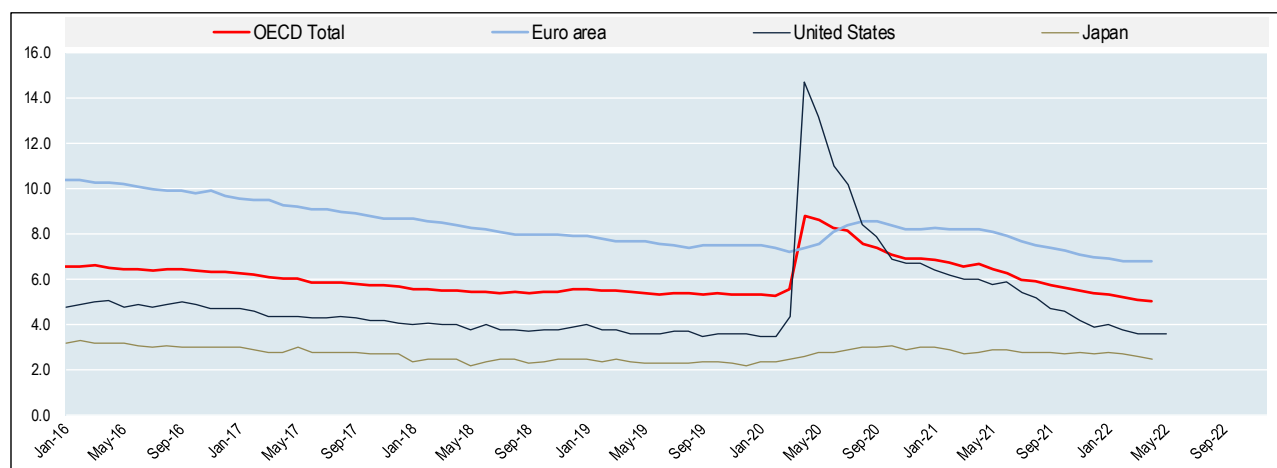
A decline in the OECD unemployment rate was recorded for **women** (Table 2), as well as for **all age groups** (Table 3). However, the unemployment rate for **men** was stable at 4.9%.

In the euro area, the unemployment rate remained stable at 6.8% in April for the third month in a row. It turned upwards in one quarter of the euro area countries, with the largest increase observed in Greece (Table 1).

Outside the euro area, the unemployment rate fell markedly in Colombia, and more modestly in Australia, Canada, Denmark, Iceland, Israel, Japan and Mexico. However, unemployment increased in the Czech Republic and Hungary. More recent data show that in May 2022, the unemployment rate remained stable at 3.6% for the third consecutive month in the United States.

It should be noted that the unemployment rate does not capture non-employed people who are outside of the labour force, either because they are not actively looking for a job or are not available for work.

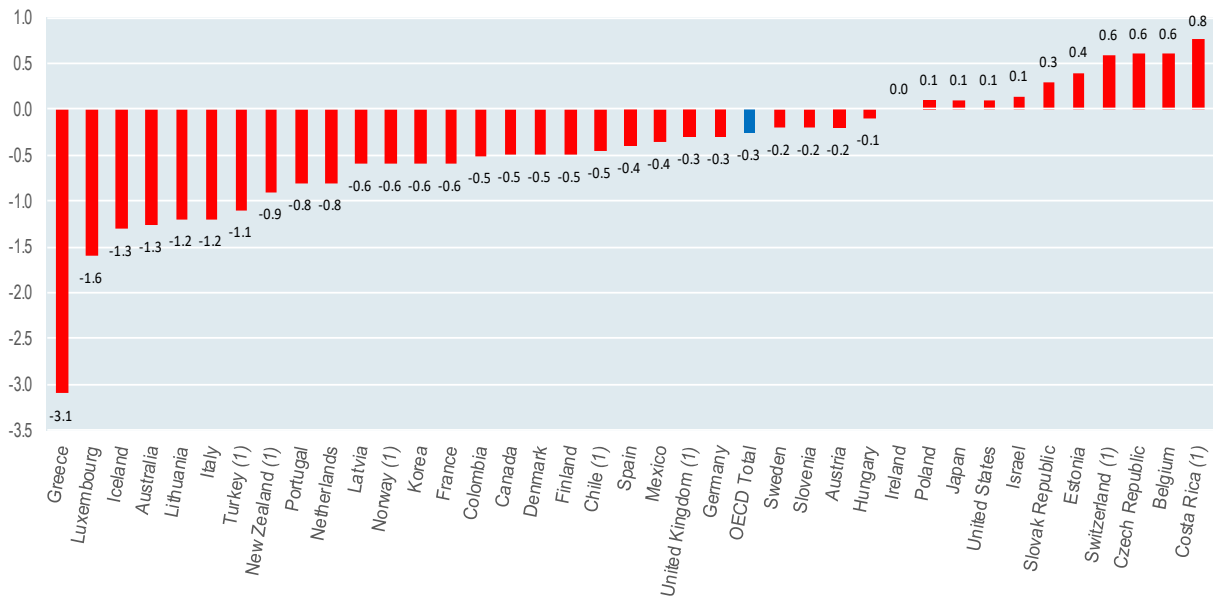
Figure 1. Unemployment rates for selected OECD countries and country aggregates ⁽¹⁾
Percentage, seasonally adjusted



(1) The fall in the OECD unemployment rate when compared with the April 2020 peak should be interpreted with caution, as it largely reflects the return of temporary laid-off workers in the United States and Canada, where they are recorded as unemployed, unlike in most other countries, including European member states, where they are recorded as employed.

Visit the interactive [OECD Data Portal](#) to explore these data further.

Figure 2. Changes in unemployment rate for OECD and selected OECD countries⁽¹⁾ between February 2020 and April 2022
Percentage points



(1) For Costa Rica, Chile, Norway and Turkey change between February 2020 and March 2022; for the United Kingdom, change between February 2020 and February 2022; for New Zealand, change between fourth quarter 2019 and first quarter 2022; Switzerland, change between fourth quarter 2019 and fourth quarter 2021.

Contacts: For further information readers are invited to contact the OECD's Media Relations Division on (33) 1 45 24 97 00 or e-mail news.contact@oecd.org; for technical questions contact stat.contact@oecd.org

Next release: July 2022

Methodological Note

The OECD unemployment rate is calculated as the total number of unemployed people in all OECD countries as a percentage of the total labour force (i.e. the unemployed plus those in employment). Rates and levels are seasonally adjusted (s.a.).

For countries for which unemployment data for the most recent month or quarter are not available, the latest available data are used to compile data for the OECD total.

For further methodological information, including the impact of COVID-19 on employment and unemployment statistics, see: [Methodological Notes for OECD Unemployment Rates News Release](#)

OECD Online Database: [OECD Short-Term Labour Market Statistics](#)

The entry into force in 2021 of the Integrated European Social Statistics (IESS) Framework Regulation resulted in a new methodology of the EU Labour Force Survey, [updating the definitions of the labour status](#). Information by country on the status of the implementation of IESS regulation as well as on possible resulting breaks in time series can be found in a Eurostat Statistics Explained [article](#).

Statistical data for Israel are supplied by and under the responsibility of the relevant Israeli authorities. The use of such data by the OECD is without prejudice to the status of the Golan Heights, East Jerusalem and Israeli settlements in the West Bank under the terms of international law.

Table 1: OECD Unemployment rates
Percentage of the labour force, seasonally adjusted

	2020	2021	2021			2022	2020	2021			2022			
			Q2	Q3	Q4	Q1		Feb	Nov	Dec	Jan	Feb	Mar	Apr
OECD - Total	7.2	6.2	6.5	5.9	5.5	5.2	5.3	5.5	5.4	5.4	5.2	5.1	5.0	
G7	6.5	5.2	5.5	5.0	4.5	4.2	4.2	4.5	4.3	4.4	4.2	4.1	4.0	
European Union	7.2	7.1	7.3	6.8	6.5	6.2	6.6	6.5	6.4	6.3	6.2	6.2	6.2	
Euro area	8.0	7.7	8.1	7.5	7.1	6.8	7.4	7.1	7.0	6.9	6.8	6.8	6.8	
Australia	6.5	5.1	5.2	4.6	4.7	4.0	5.1	4.6	4.2	4.2	4.0	3.9	3.9	
Austria	6.0	6.2	6.7	5.6	5.3	4.6	4.6	5.2	4.8	4.7	4.8	4.3	4.4	
Belgium	5.8	6.3	6.3	6.3	5.8	5.6	5.1	5.8	5.7	5.6	5.6	5.6	5.7	
Canada	9.6	7.5	7.9	7.2	6.3	5.8	5.7	6.1	6.0	6.5	5.5	5.3	5.2	
Chile	10.8	8.9	9.1	8.2	7.7	7.8	8.2	7.7	7.7	7.8	7.8	7.7	..	
Colombia	15.9	13.8	14.5	12.7	13.2	12.3	11.3	13.5	12.6	12.5	12.1	12.2	10.8	
Costa Rica	19.6	16.4	18.0	15.3	13.7	13.6	12.5	13.7	13.1	13.3	13.6	13.3	..	
Czech Republic	2.6	2.8	3.1	2.7	2.2	2.4	1.8	2.2	2.1	2.3	2.5	2.3	2.4	
Denmark	5.7	5.1	5.1	4.8	4.6	4.4	4.8	4.5	4.5	4.5	4.3	4.4	4.3	
Estonia	6.9	6.2	6.7	5.9	5.3	5.6	5.2	5.3	5.4	5.8	5.5	5.5	5.6	
Finland	7.7	7.7	8.2	7.5	6.9	6.6	6.7	6.8	7.2	7.0	6.5	6.4	6.2	
France	8.0	7.9	8.2	7.8	7.4	7.3	7.8	7.4	7.4	7.3	7.3	7.3	7.2	
Germany	3.6	3.6	3.7	3.5	3.3	3.1	3.3	3.3	3.2	3.1	3.1	3.0	3.0	
Greece	17.6	14.8	15.9	13.7	13.1	12.6	15.8	13.0	12.9	13.2	12.5	12.2	12.7	
Hungary	4.1	4.1	4.1	3.9	3.8	3.5	3.5	3.8	3.7	3.7	3.7	3.2	3.4	
Iceland	6.4	6.0	6.2	5.0	4.4	4.0	5.0	4.4	4.3	4.1	4.0	3.8	3.7	
Ireland	5.9	6.3	6.9	5.5	5.2	5.0	4.8	5.2	5.1	5.0	4.8	5.1	4.8	
Israel	4.3	5.0	5.3	5.0	4.4	3.8	3.4	4.3	4.1	3.9	3.9	3.8	3.5	
Italy	9.3	9.6	9.8	9.1	9.1	8.6	9.6	9.1	8.9	8.7	8.6	8.4	8.4	
Japan	2.8	2.8	2.9	2.8	2.7	2.7	2.4	2.8	2.7	2.8	2.7	2.6	2.5	
Korea	3.9	3.7	3.7	3.2	3.4	3.0	3.3	3.2	3.8	3.6	2.7	2.7	2.7	
Latvia	8.1	7.6	7.8	7.4	7.3	6.9	7.2	7.3	7.4	7.2	6.9	6.7	6.6	
Lithuania	8.5	7.1	7.5	6.7	6.7	6.3	7.4	6.7	6.6	6.5	6.2	6.1	6.2	
Luxembourg	6.7	5.4	5.5	5.1	4.7	4.4	5.8	4.7	4.7	4.5	4.5	4.3	4.2	
Mexico ⁽¹⁾	4.4	4.1	4.3	4.0	3.8	3.5	3.5	3.7	3.8	3.5	3.7	3.3	3.2	
Netherlands	4.9	4.2	4.4	4.1	3.8	3.4	4.0	3.7	3.8	3.6	3.4	3.3	3.2	
New Zealand	4.6	3.8	4.0	3.3	3.2	3.2								
Norway	4.6	4.3	4.9	4.0	3.5	3.0	3.5	3.5	3.3	3.1	3.1	2.9	..	
Poland	3.2	3.4	3.5	3.2	3.1	3.0	2.9	3.1	3.1	3.0	3.0	3.0	3.0	
Portugal	7.1	6.6	6.9	6.4	6.2	5.8	6.6	6.3	5.9	5.8	5.7	5.8	5.8	
Slovak Republic	6.7	6.8	7.0	6.7	6.6	6.5	6.0	6.6	6.5	6.5	6.5	6.4	6.3	
Slovenia	5.0	4.8	4.6	4.5	4.6	4.1	4.2	4.6	4.4	4.2	4.0	4.0	4.0	
Spain	15.5	14.8	15.4	14.7	13.5	13.3	13.7	13.5	13.3	13.2	13.3	13.5	13.3	
Sweden	8.5	8.8	9.2	8.6	8.2	7.7	7.9	8.2	8.0	8.0	7.4	7.6	7.7	
Switzerland	4.8	5.1	5.2	5.0	4.7	..								
Turkey	13.1	12.0	12.4	11.3	11.3	11.4	12.6	11.3	11.4	11.5	11.1	11.5	..	
United Kingdom	4.6	4.4	4.7	4.3	4.1	3.7	4.0	4.1	3.9	3.8	3.7	
United States	8.1	5.4	5.9	5.1	4.2	3.8	3.5	4.2	3.9	4.0	3.8	3.6	3.6	

..: not available

Notes:

(1) Mexico: April, May and June 2020 monthly figures are based on the INEGI Encuesta Telefónica de Ocupación y Empleo (ETOE) phone survey. These data are not strictly comparable with the results for earlier months. Data from July 2020 are based on the new Encuesta Nacional de Ocupación y Empleo (ENOE) survey, combining telephone and face-to-face interviews.

Table 2: Unemployment rates by sex
Percentage of the labour force of each group, seasonally adjusted

	Women							Men						
	2020	2021	2021	2022	2022			2020	2021	2021	2022	2022		
			Q4	Q1	Feb	Mar	Apr			Q4	Q1	Feb	Mar	Apr
OECD - Total	7.4	6.3	5.7	5.4	5.4	5.3	5.2	6.9	6.0	5.3	5.1	5.0	4.9	4.9
G7	6.5	5.1	4.4	4.2	4.2	4.0	3.9	6.4	5.3	4.6	4.3	4.2	4.1	4.1
European Union	7.5	7.4	6.7	6.6	6.6	6.6	6.5	7.0	6.8	6.3	6.0	5.9	5.9	5.8
Euro area	8.3	8.1	7.4	7.3	7.3	7.2	7.2	7.7	7.4	6.9	6.5	6.5	6.5	6.4
Australia	6.4	5.0	4.7	3.8	3.8	3.7	3.7	6.6	5.2	4.6	4.2	4.2	4.2	4.0
Austria	5.9	6.1	5.3	4.5	4.8	4.2	4.3	6.1	6.3	5.3	4.7	4.7	4.4	4.4
Belgium	5.5	5.9	4.8	4.5	4.5	4.6	4.6	6.0	6.6	6.7	6.6	6.6	6.6	6.6
Canada	9.5	7.2	6.0	5.8	5.3	5.5	5.1	9.6	7.7	6.6	5.8	5.7	5.2	5.4
Chile	11.0	9.2	8.0	8.2	8.2	8.2	..	10.6	8.6	7.5	7.4	7.4	7.4	..
Colombia	20.1	17.5	16.7	15.7	15.1	15.7	14.1	12.8	11.3	10.8	9.8	10.0	9.7	8.3
Costa Rica	25.7	22.0	17.4	17.5	17.5	17.8	..	15.6	12.7	11.3	10.9	10.9	10.2	..
Czech Republic	3.0	3.4	2.7	3.0	3.2	2.8	3.0	2.2	2.3	1.9	1.9	2.0	1.9	1.9
Denmark	6.0	5.2	4.5	4.6	4.5	4.7	4.5	5.4	5.0	4.6	4.2	4.1	4.1	4.1
Estonia	6.7	5.6	4.9	5.0	5.1	4.7	4.7	7.1	6.8	5.7	6.2	5.8	6.3	6.4
Finland	7.4	7.1	6.5	6.3	6.0	6.2	5.6	8.1	8.2	7.2	6.9	6.9	6.6	6.7
France	8.0	7.8	7.3	7.3	7.3	7.3	7.2	8.1	8.0	7.6	7.3	7.3	7.3	7.3
Germany	3.2	3.2	2.9	2.7	2.7	2.7	2.7	4.0	3.9	3.6	3.4	3.4	3.3	3.2
Greece	21.5	19.0	17.2	16.6	16.2	16.1	16.2	14.6	11.4	9.8	9.5	9.5	9.1	9.9
Hungary	4.2	4.2	4.0	3.4	3.7	2.8	3.1	4.1	3.9	3.6	3.7	3.7	3.6	3.6
Iceland	6.3	6.5	4.4	4.2	4.2	4.0	3.8	6.6	5.7	4.5	3.8	3.8	3.7	3.6
Ireland	5.9	6.2	5.2	5.0	4.8	5.1	4.7	5.8	6.3	5.2	4.9	4.7	5.1	4.9
Israel	4.1	4.9	4.3	4.0	4.1	4.1	3.4	4.5	5.0	4.5	3.7	3.7	3.5	3.6
Italy	10.3	10.7	10.1	9.8	10.0	9.4	9.6	8.6	8.7	8.2	7.7	7.5	7.7	7.4
Japan	2.5	2.5	2.5	2.4	2.4	2.4	2.2	3.0	3.1	2.9	2.9	3.0	2.7	2.8
Korea	4.0	3.8	3.7	3.2	2.6	2.8	2.9	3.9	3.6	3.2	2.9	2.8	2.6	2.5
Latvia	7.1	6.6	6.6	5.9	5.8	5.7	5.8	9.1	8.5	8.0	8.0	8.0	7.7	7.4
Lithuania	7.7	6.6	5.8	6.0	6.0	6.2	6.3	9.3	7.6	7.6	6.5	6.4	6.0	6.1
Luxembourg	6.8	5.9	5.0	4.6	4.7	4.5	4.5	6.5	5.0	4.5	4.3	4.3	4.2	4.0
Mexico ⁽¹⁾	4.2	4.1	4.0	3.5	3.8	3.2	3.1	4.6	4.1	3.7	3.5	3.6	3.4	3.2
Netherlands	5.1	4.5	4.1	3.7	3.6	3.6	3.4	4.6	4.0	3.6	3.3	3.3	3.1	3.0
New Zealand	5.0	3.9	3.3	3.3				4.3	3.7	3.1	3.1			
Norway	4.4	4.0	3.3	2.8	2.8	2.8	..	4.8	4.6	3.7	3.3	3.4	3.1	..
Poland	3.3	3.4	3.1	3.0	3.0	3.1	3.2	3.1	3.4	3.1	3.0	3.0	2.9	2.9
Portugal	7.4	6.9	6.3	6.2	6.2	6.5	6.5	6.8	6.3	6.0	5.2	5.1	5.0	5.1
Slovak Republic	7.1	7.0	6.5	6.4	6.4	6.3	6.2	6.2	6.7	6.6	6.6	6.6	6.5	6.3
Slovenia	5.7	5.4	5.1	4.5	4.4	4.3	4.3	4.4	4.3	4.2	3.7	3.7	3.8	3.8
Spain	17.4	16.7	15.3	15.0	15.0	15.2	15.2	13.9	13.1	12.0	11.8	11.7	11.9	11.7
Sweden	8.5	9.1	8.8	8.3	7.3	8.6	8.7	8.5	8.5	7.7	7.1	7.4	6.8	6.9
Switzerland	5.0	5.3	4.6	..				4.7	4.9	4.8	..			
Turkey	14.8	14.7	14.1	13.7	13.4	13.9	..	12.4	10.7	9.9	10.2	9.9	10.3	..
United Kingdom	4.3	4.3	3.9	3.5	3.5	4.8	4.7	4.2	3.9	3.9
United States	8.4	5.2	4.2	3.8	3.9	3.6	3.5	7.8	5.5	4.2	3.8	3.8	3.6	3.8

..: not available

Notes:

(1) Mexico: April, May and June 2020 monthly figures are based on the INEGI ETOE phone survey. These data are not strictly comparable with the results for earlier months. Data from July 2020 are based on the New ENOE survey, combining telephone and face-to-face interviews.

Table 3: Unemployment rates by age group
Percentage of the labour force of each group, seasonally adjusted

	Youth (15-24)							Prime-age and Older Workers (25+)						
	2020	2021	2021	2022	2022			2020	2021	2021	2022	2022		
			Q4	Q1	Feb	Mar	Apr			Q4	Q1	Feb	Mar	Apr
OECD - Total	15.3	12.8	11.6	11.1	11.0	10.8	10.7	6.1	5.3	4.7	4.5	4.5	4.4	4.3
G7	13.9	10.6	9.3	9.1	9.0	9.0	8.8	5.6	4.5	3.9	3.6	3.6	3.5	3.5
European Union	17.4	16.7	14.8	14.1	14.0	14.0	13.9	6.3	6.2	5.7	5.5	5.5	5.5	5.4
Euro area	17.9	16.9	14.9	14.1	14.0	14.0	13.9	7.0	6.9	6.4	6.1	6.1	6.1	6.0
Australia	14.3	11.3	11.1	8.9	9.2	8.3	8.8	5.0	4.0	3.5	3.2	3.1	3.1	2.9
Austria	11.7	11.0	9.5	8.2	8.5	7.2	11.7	5.3	5.6	4.8	4.1	4.3	3.9	3.4
Belgium ⁽¹⁾	15.9	18.2	15.5	13.5	13.5	13.5	..	5.0	5.3	5.0	5.0	5.0	5.0	5.1
Canada	20.0	13.6	10.7	11.4	10.9	9.8	10.1	7.9	6.5	5.6	4.9	4.6	4.6	4.5
Chile	24.7	20.0	16.9	17.1	17.1	16.7	..	9.6	7.9	7.0	7.0	7.0	7.0	..
Colombia	27.3	25.6	24.9	23.4	24.0	22.4	21.4	13.7	11.7	11.2	10.3	9.9	10.4	8.9
Costa Rica	42.4	39.4	35.4	34.4	34.4	32.8	..	15.8	12.5	10.2	10.1	10.1	10.0	..
Czech Republic	7.9	8.2	7.1	7.0	7.4	7.1	7.9	2.3	2.5	2.0	2.1	2.2	2.1	2.1
Denmark	11.6	10.8	9.8	8.4	8.3	8.3	8.2	4.7	4.2	3.7	3.7	3.7	3.7	3.7
Estonia	18.3	16.9	17.4	18.8	18.8	17.5	17.7	6.0	5.4	4.4	4.6	4.4	4.6	4.7
Finland	20.8	17.1	14.9	13.6	13.8	12.0	12.5	6.0	6.5	5.9	5.7	5.5	5.7	5.4
France	21.4	18.9	16.6	16.5	16.5	16.8	16.5	6.6	6.6	6.4	6.2	6.2	6.2	6.1
Germany	7.5	7.0	6.0	5.7	5.7	5.7	5.7	3.2	3.2	3.0	2.8	2.8	2.7	2.7
Greece	38.4	35.5	31.3	30.7	31.6	26.0	36.8	16.6	13.8	12.2	11.8	11.6	11.6	11.5
Hungary	12.4	13.4	12.6	10.5	11.2	9.8	11.4	3.5	3.4	3.2	3.1	3.2	2.8	2.8
Iceland	11.9	12.3	9.0	9.6	9.6	9.6	9.5	5.5	5.0	3.7	3.0	3.0	2.8	2.7
Ireland	15.9	14.8	11.8	8.6	8.4	7.2	5.6	4.6	5.1	4.2	4.4	4.2	4.8	4.7
Israel ⁽²⁾	7.9	7.7	7.5	6.3	6.5	6.5	6.1	3.7	4.5	4.1	3.1	3.2	2.9	2.6
Italy	29.5	29.9	27.2	24.9	24.2	25.1	23.8	8.1	8.3	7.9
Japan	4.5	4.6	4.8	4.2	3.8	4.0	4.1	2.6	2.7	2.6	2.6	2.6	2.5	2.4
Korea	10.5	8.5	7.7	7.7	7.4	7.6	7.2	3.6	3.4	3.2	2.7	2.4	2.4	2.4
Latvia	14.8	14.8	12.5	11.5	11.6	11.1	10.7	7.7	7.1	7.0	6.6	6.6	6.4	6.3
Lithuania	19.5	14.4	10.6	13.5	13.6	14.3	12.9	7.7	6.6	6.4	5.7	5.6	5.5	5.7
Luxembourg	22.7	17.9	16.2	14.9	15.0	14.6	14.0	5.4	4.4	3.8	3.6	3.6	3.5	3.5
Mexico ⁽³⁾	8.2	8.1	7.6	6.5	6.6	6.3	6.3	3.7	3.4	3.0	2.9	3.1	2.7	2.6
Netherlands	10.6	9.4	8.0	7.3	7.3	7.1	6.9	3.7	3.2	2.9	2.6	2.6	2.5	2.4
New Zealand	12.4	10.5	8.8	9.6	3.3	2.7	2.2	2.1
Norway	11.5	10.9	9.5	8.1	8.2	7.2	..	3.6	3.3	2.6	2.3	2.3	2.3	..
Poland	10.9	11.9	9.6	9.1	9.1	9.0	8.9	2.7	2.8	2.7	2.6	2.6	2.6	2.6
Portugal	22.9	23.1	21.9	20.3	20.0	20.4	19.9	6.0	5.5	5.1	4.8	4.7	4.8	4.8
Slovak Republic	20.3	20.6	19.1	18.9	18.9	18.8	18.6	5.8	6.1	5.9	5.8	5.8	5.7	5.6
Slovenia ⁽¹⁾	14.4	13.1	10.2	9.5	9.5	9.5	..	4.4	4.2	4.1	3.6	3.6	3.6	3.6
Spain	38.3	35.0	31.3	29.9	29.7	29.6	28.9	14.0	13.4	12.3	12.1	12.1	12.3	12.2
Sweden	23.2	24.8	24.1	22.2	22.2	22.7	21.8	6.7	6.8	6.2	5.8	5.5	5.7	5.9
Switzerland	8.6	8.9	8.4	4.3	4.6	4.2
Turkey	24.9	22.8	21.4	21.1	20.7	21.2	..	11.1	10.1	9.5	9.7	9.4	9.8	..
United Kingdom	13.8	12.3	11.2	10.6	10.6	3.3	3.4	3.1	2.8	2.8
United States	15.1	9.7	8.4	8.3	8.3	8.2	7.9	7.1	4.7	3.6	3.1	3.2	2.9	3.0

..: not available

Notes:

(1) Belgium and Slovenia: For youth unemployment, quarterly data are shown.

(2) Israel: Data shown in this table are not seasonally adjusted.

(3) Mexico: April, May and June 2020 monthly figures are based on the INEGI ETOE phone survey. These data are not strictly comparable with the results for earlier months. Data from July 2020 are based on the New ENOE survey, combining telephone and face-to-face interviews.

Table 4: Unemployment levels
Thousands of persons, seasonally adjusted

	2020	2021	2021		2022	2022			
			Q3	Q4		Q1	Jan	Feb	Mar
OECD - Total	46,811	40,953	39,243	36,935	35,222	36,095	35,064	34,529	34,031
G7	24,545	19,872	19,160	17,303	16,250	16,809	16,233	15,747	15,638
European Union	15,186	14,956	14,569	13,904	13,453	13,583	13,422	13,353	13,264
Euro area	12,840	12,619	12,323	11,735	11,339	11,429	11,311	11,277	11,181
Australia	879	701	630	640	562	579	560	548	537
Austria	271	284	259	244	213	218	222	199	202
Belgium	291	324	326	303	295	295	294	296	297
Canada	1,897	1,520	1,470	1,298	1,193	1,342	1,136	1,100	1,086
Chile	938	806	748	721	738	730	738	739	..
Colombia	3,731	3,263	3,019	3,117	2,998	3,021	2,960	3,014	2,713
Costa Rica	468	401	378	333	330	322	330	325	..
Czech Republic	137	150	143	121	126	122	133	122	126
Denmark	171	155	145	140	136	139	133	136	134
Estonia	48	43	41	37	40	42	39	40	40
Finland	209	212	207	191	185	196	181	179	173
France	2,381	2,365	2,341	2,246	2,213	2,205	2,212	2,223	2,201
Germany	1,551	1,536	1,495	1,416	1,336	1,360	1,334	1,314	1,299
Greece	790	678	644	613	600	615	599	586	600
Hungary	198	196	189	185	173	181	181	157	164
Iceland	13	13	10	9	8	9	8	8	8
Ireland	139	158	142	136	132	132	127	136	129
Israel	177	206	210	188	165	165	166	164	150
Italy	2,296	2,371	2,263	2,261	2,146	2,183	2,144	2,111	2,094
Japan	1,922	1,946	1,917	1,877	1,860	1,910	1,880	1,790	1,760
Korea	1,108	1,037	890	971	862	1,038	780	770	782
Latvia	79	71	69	68	65	67	65	64	62
Lithuania	126	105	99	99	92	96	91	89	91
Luxembourg	21	18	16	15	14	15	14	14	14
Mexico ⁽¹⁾	2,337	2,372	2,328	2,227	2,055	2,048	2,169	1,947	1,893
Netherlands	465	408	399	370	339	354	336	327	316
New Zealand	132	110	98	93	94				
Norway	131	123	115	100	90	92	91	86	..
Poland	537	580	555	536	523	523	521	525	526
Portugal	358	337	332	319	297	299	293	299	300
Slovak Republic	186	188	186	182	179	181	179	176	174
Slovenia	51	48	46	47	42	43	42	41	41
Spain	3,531	3,430	3,413	3,149	3,111	3,087	3,099	3,146	3,113
Sweden	467	488	480	456	428	448	410	426	435
Switzerland	238	252	245	235	..				
Turkey	4,040	3,927	3,722	3,790	3,845	3,900	3,741	3,894	..
United Kingdom	1,551	1,512	1,448	1,374	1,257	1,296	1,257
United States	12,948	8,623	8,225	6,832	6,245	6,513	6,270	5,952	5,941

..: not available

Notes:

(1) Mexico: April, May and June 2020 monthly figures are based on the INEGI ETOE phone survey. These data are not strictly comparable with the results for earlier months. Data from July 2020 are based on the New ENOE survey, combining telephone and face-to-face interviews.