

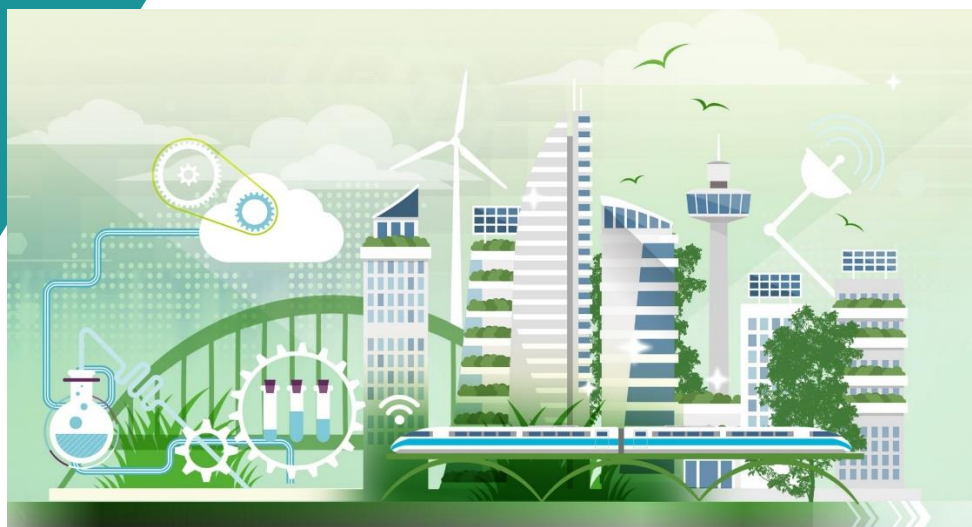
OECD and European Commission

Getting to services: Transport & accessibility

A discussion of data, methods and applications

Thursday 26 October 2023 | DIGITAL EVENT

AGENDA



Funded by
the European Union



Venue: *Virtual meeting on ZOOM* | 15.00-17.00 (Paris time) | 10:00am Federal District, Brazil | 9:00am Ottawa / New York time

To participate, please register here: https://meetoecd1.zoom.us/webinar/register/WN_szywL_2TRDC68_Q__e8hGA

A link with log-in details will be sent to all registered participants.

■ **Contacts** Alison Weingarden: alison.weingarden@oecd.org; Carsten Dolle: carsten.dolle@oecd.org

Chair: *Ana Moreno Monroy*, Head of Unit – OECD Centre for Entrepreneurship, SMEs, Regions and Cities (CFE)

15.00-15.10 Introduction

Nadim Ahmad, Deputy Director – OECD CFE

15.10-16.00 Data and methods for multi-modal transport analysis

Keynote: Rafael H. M. Pereira, Head of Data Science – Institute for Applied Economic Research (Ipea), Brazil discusses “Measuring access: How far we have come and how far we have yet to go”

Case study (Canada): Alessandro Alasia, Assistant Director – Statistics Canada presents “Spatial Access Measures: Measuring access to services and amenities using active and public modes of transportation in Canada” (link [here](#))

Cross-country: Alison Weingarden, Policy Analyst/Economist – OECD CFE presents “Transport and access to services in settlements of OECD regions”

Q&A: Brilé Anderson, Policy Analyst/Economist – OECD Sahel and West Africa Club (SWAC)

16.00-16.50 Transport performance and accessibility to services within & across settlements

Keynote: Hugo Poelman, Senior Assistant – European Commission (EC) DG-REGIO discusses “Measuring accessibility now and in the future”

Case study (Netherlands) Jeroen Bastiaanssen, Transport Researcher – Environmental Planning Agency (PBL), Netherlands presents “Access for everyone? An analysis of the (in)accessibility of facilities and jobs in the Netherlands” (link [here](#))

Cross-country: Claire Hoffmann, Junior Policy Analyst/Statistician – OECD CFE presents “Geographic inequalities in accessibility of essential services”

Q&A: Alexander Lembcke, Head of Unit – OECD CFE

16.50-17.00 Closing remarks

Jorge Durán Laguna, Head of Economic Analysis and Regional Statistics – EC DG-REGIO

Rudiger Ahrend, Head of Economic Analysis, Data and Statistics Division – OECD CFE