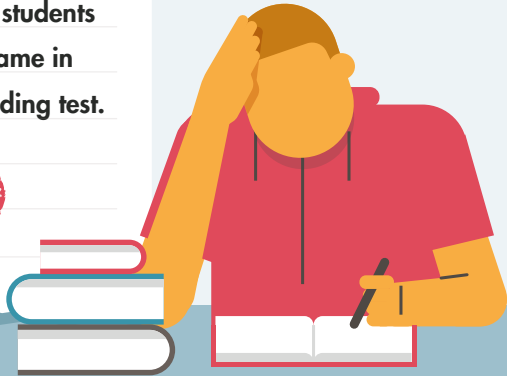


# School policies, performance and equity

A disadvantaged student is more than **twice as likely** than an advantaged student to have **repeated a grade**

even if both students scored the same in the PISA reading test.

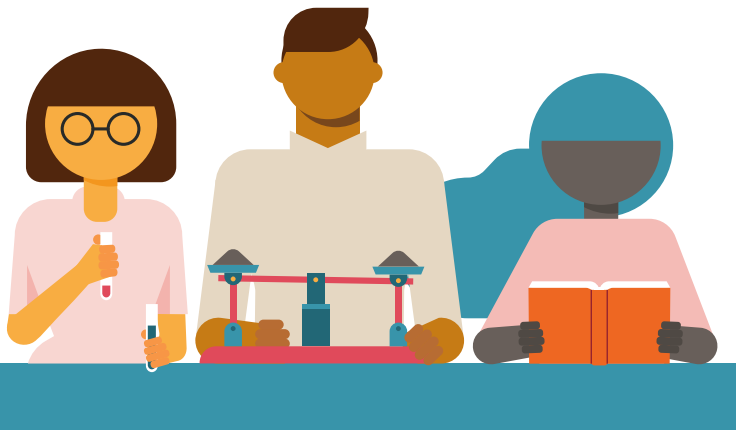


Countries/economies with **smaller shares of students who had repeated a grade** generally showed

- ✓ higher mean reading performance and
- ✓ greater equity in reading performance.



In **high performing** education systems, **differences in educational resources** between advantaged and disadvantaged schools were **small**.



**59%** of students

in **advantaged schools,**

**but only**

**49%** of students

in **disadvantaged schools** have access to an **effective online learning platform.**

**Teacher mentoring** is more prevalent in **advantaged schools** than in disadvantaged schools.



More than **60%** of students attend schools that **provide teacher mentoring** on the school's initiative.

