



# Identifying Tools for Sustainability Assessments

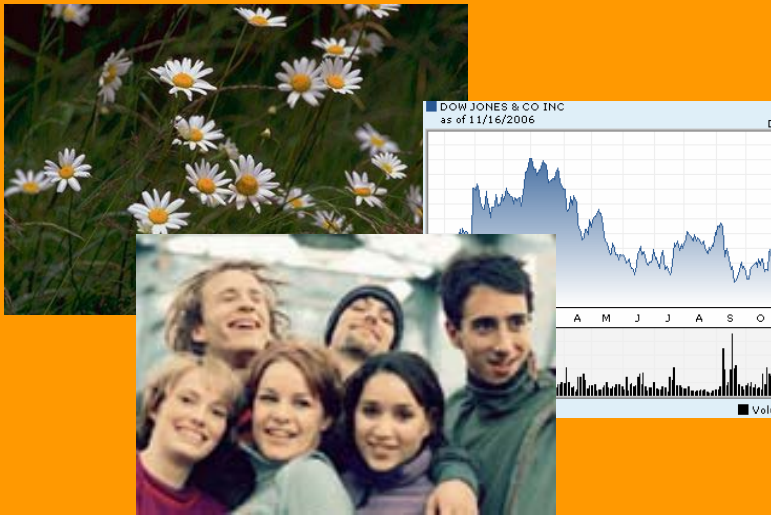
Anneke von Raggamby

Ecologic

# The broader picture

## Political context:

Sustainable



Development

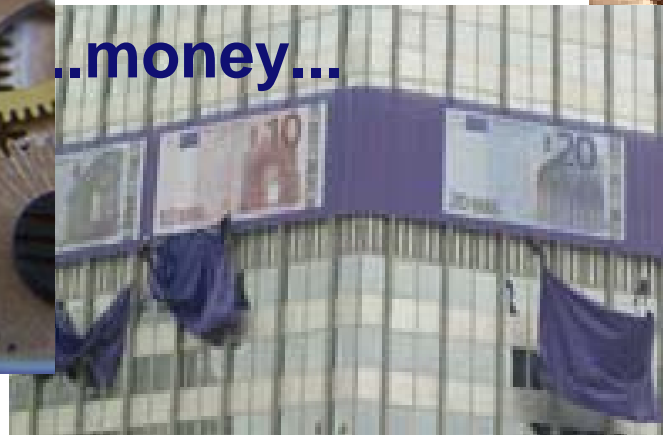
Better



Regulation

# The broader picture

Resources in terms of...

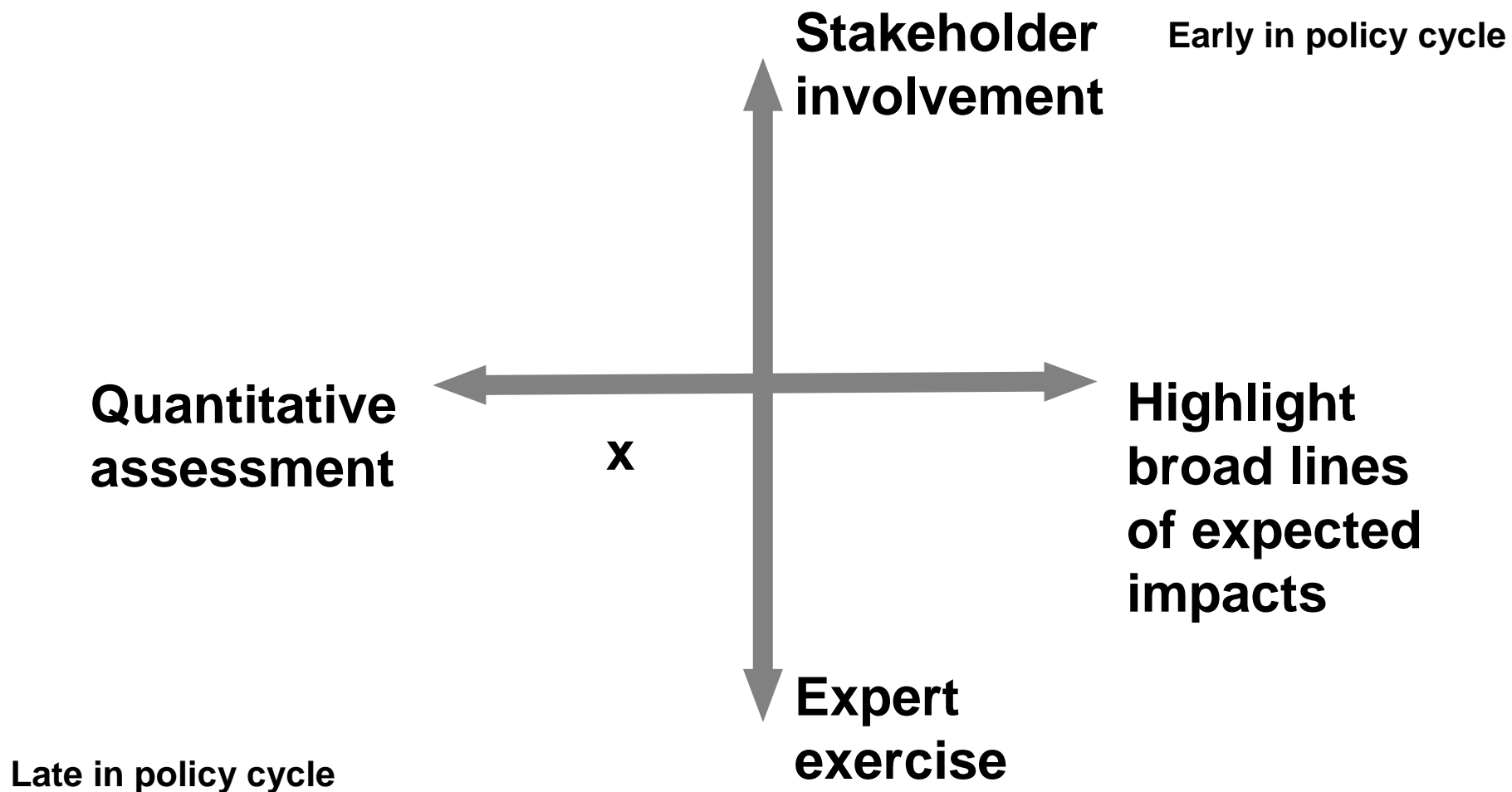


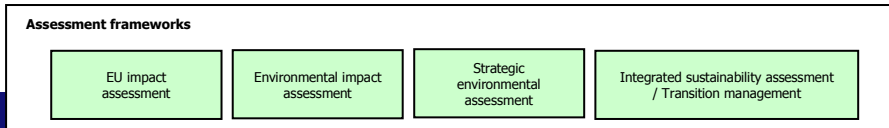
...personel...



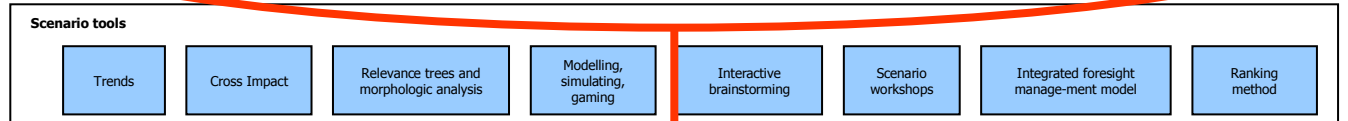
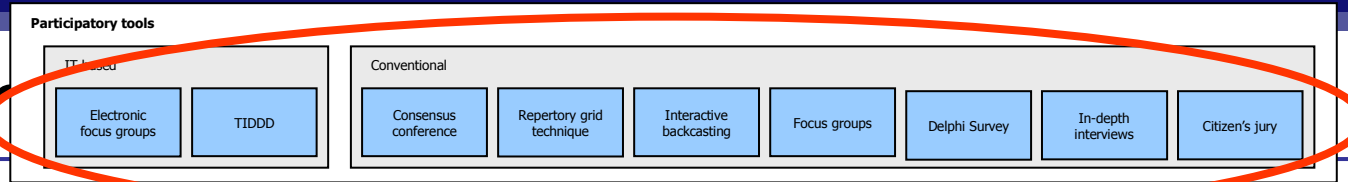
...often limited affecting quality of IAs

# The broader picture

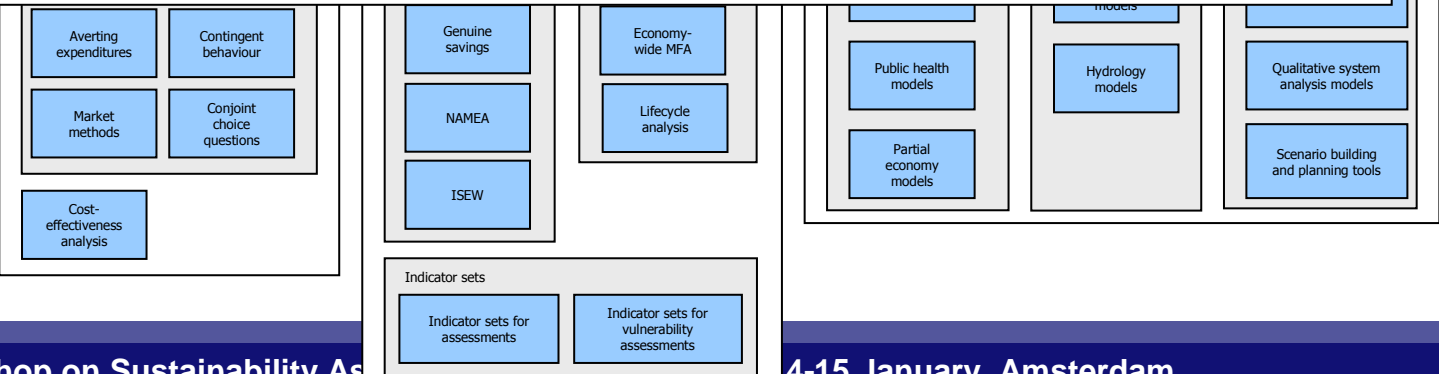
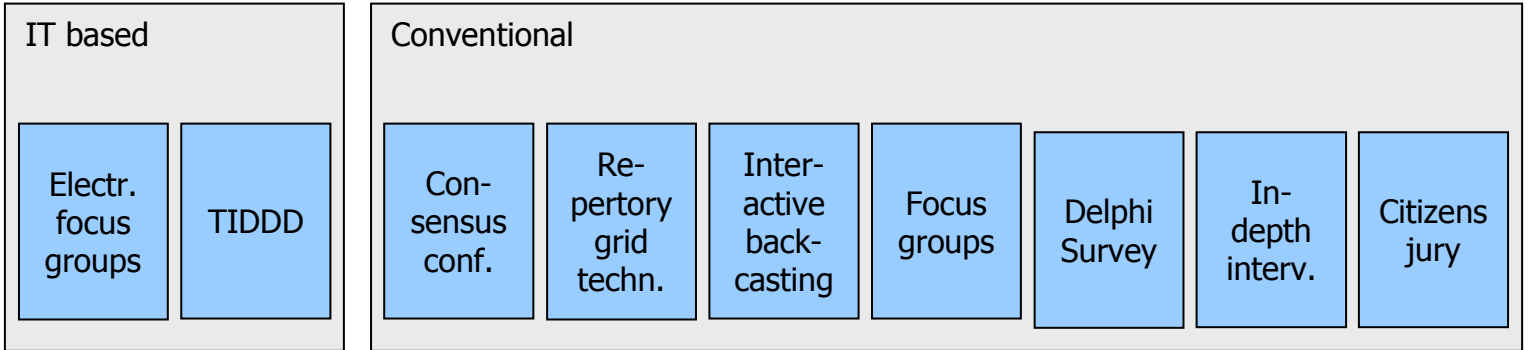




# Which



## Participatory tools





# The Jungle of tools



## Which tools are wanted (interviews)?

- **Tools should be...**
  - **...flexible, easy to adapt to a given policy & circumstances**
  - **...up-to date**
  - **...suitable to be combined (blind spots).**
- **Tools should reliably show main tendencies that is whether the proposal will help to achieve the objectives or not.**

# Which tools are used (interviews)?

Category	Tool/method/procedure
Comparing impacts of different options	CBA CEA
Dealing with Risk & uncertainty	MDA Scenario analysis
Assessment of impacts	Risk Assessment CGE Models
	Macro-economic models Sector based economic models
	System Models CA
	Integrated Assessment Models
Participatory tools	Focus Groups, Electronic focus groups Consensus conference Interactive backcasting Tools for dialogue Repertory grid technique
Other tools	Bibliometrics Innovation indicators Historical approach

- Demand for formal tools & methods generally quite low by COM DOs
- Most popular tools are CBA, CEA, modelling
- If tool use is extended then these are often models which are of sectoral character (e.g. energy or transport policy)



# Which tools are needed (interviews)?



**'We don't need new tools ...  
... just better consolidation of  
what we already have'  
(Commission Desk Officer)**

## **Problems of tool use in practice?**

---

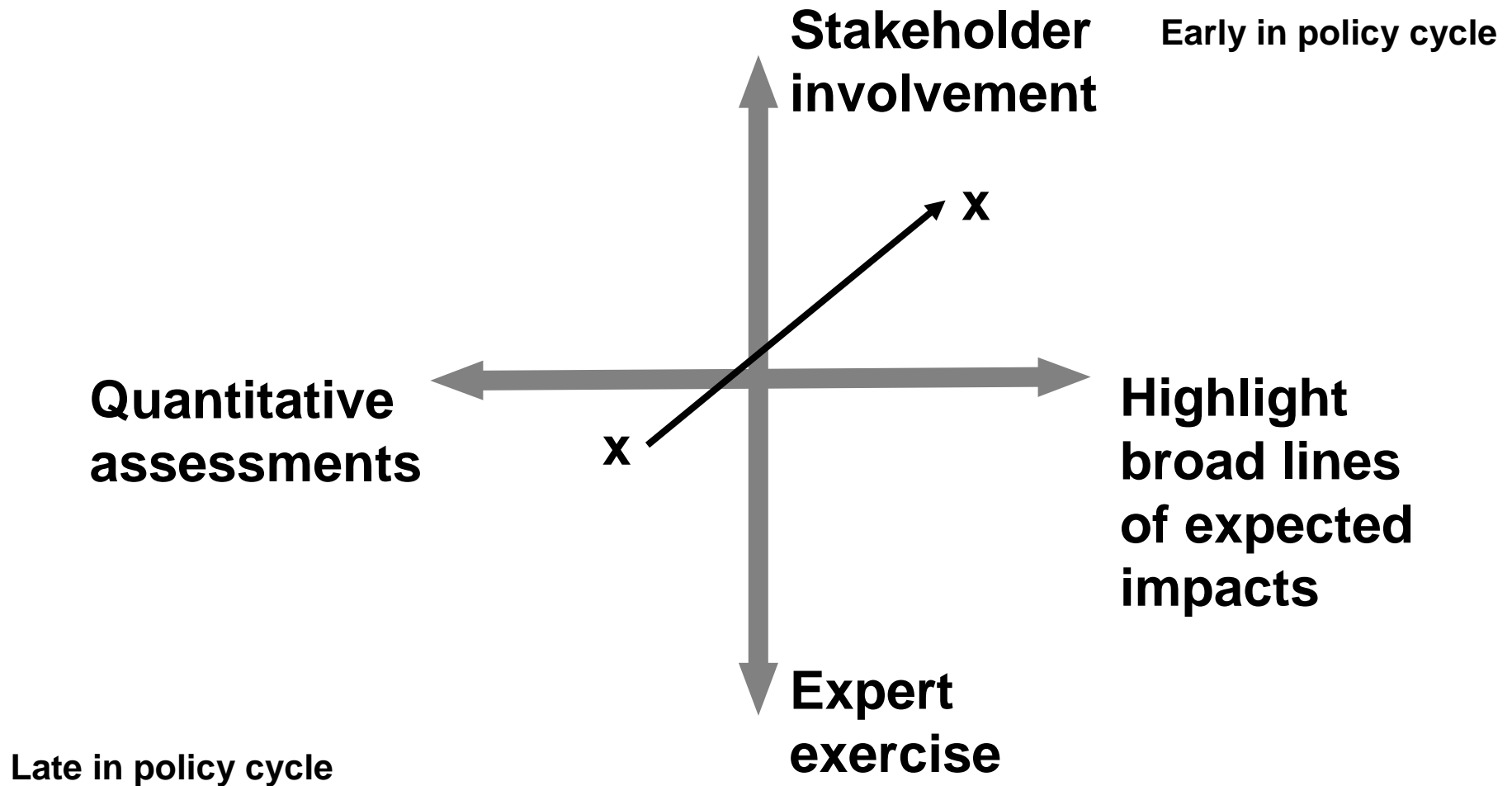
- **Availability of data, methodological gaps in quantifying environmental / social impacts & tendency to only accept quantitative results**
- › **qualitative impacts or those which are difficult to quantify are difficult to show though they may be as or even more severe than those easy to quantify (usually economic effects)**

## **Problems of tool use in practice?**

---

- **The environment is perceived to be in a politically weak position, therefore pro env DGs find themselves under pressure to use quantification as much as possible to press their case**
- **More tool use at environmental IA level will not necessarily make the environment more politically salient**

# A shift in IA needed?



## **Anneke von Raggamby**

**Ecologic, Pfalzburger Str. 43-44, D-10717 Berlin**

**☎ +49-30-86880-0, 📠 +49-30-86880-100**

**[anneke.raggamby@ecologic.eu](mailto:anneke.raggamby@ecologic.eu), [www.ecologic.eu](http://www.ecologic.eu)**