

# Session 4

## Addressing new frontiers in CI resilience

### Cyber risks – and beyond

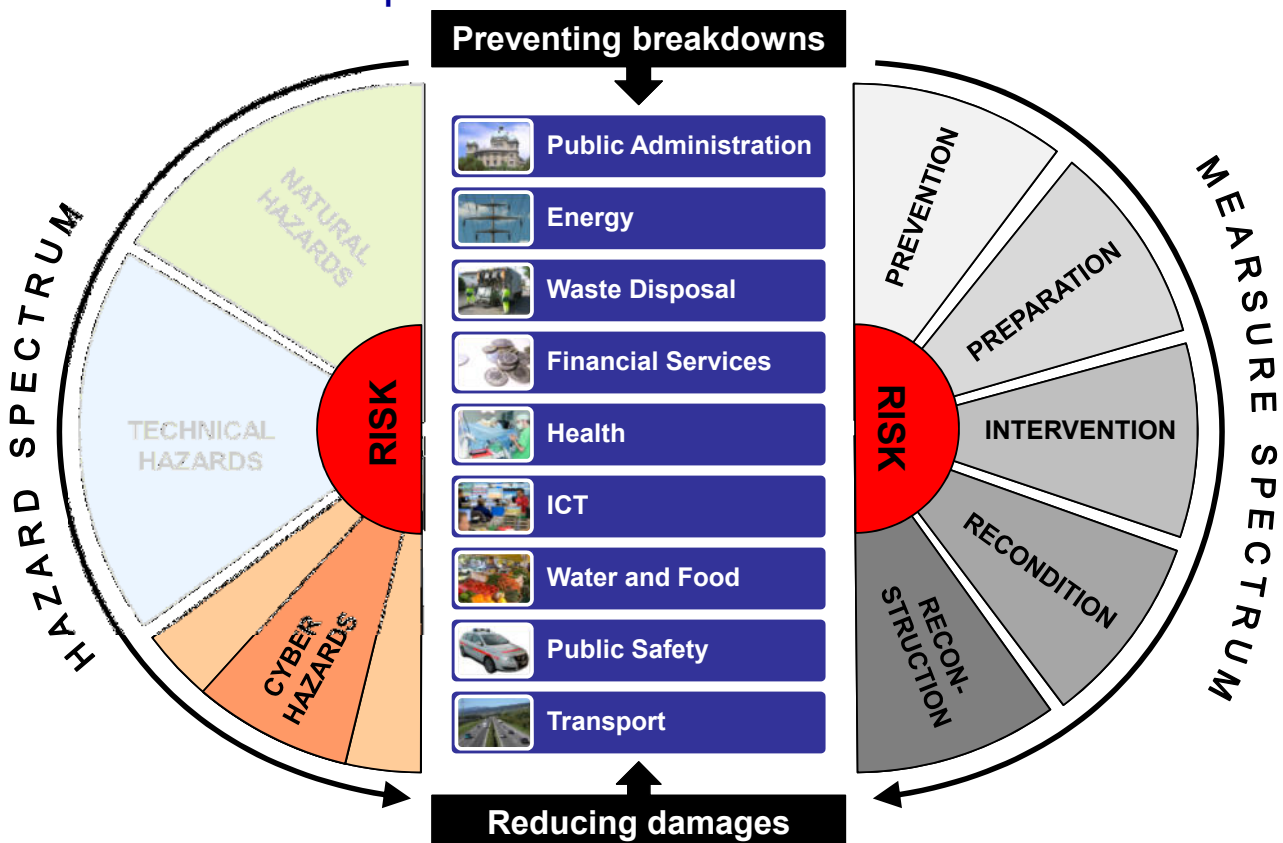
### Swiss application and insights

Joint OECD-JRC Workshop on  
Critical Infrastructure Resilience

Paris, 25 September 2018

Dr. Stefan BREM  
 Head of Unit, Risk Analysis and Research Coordination  
 Federal Office for Civil Protection FOCP

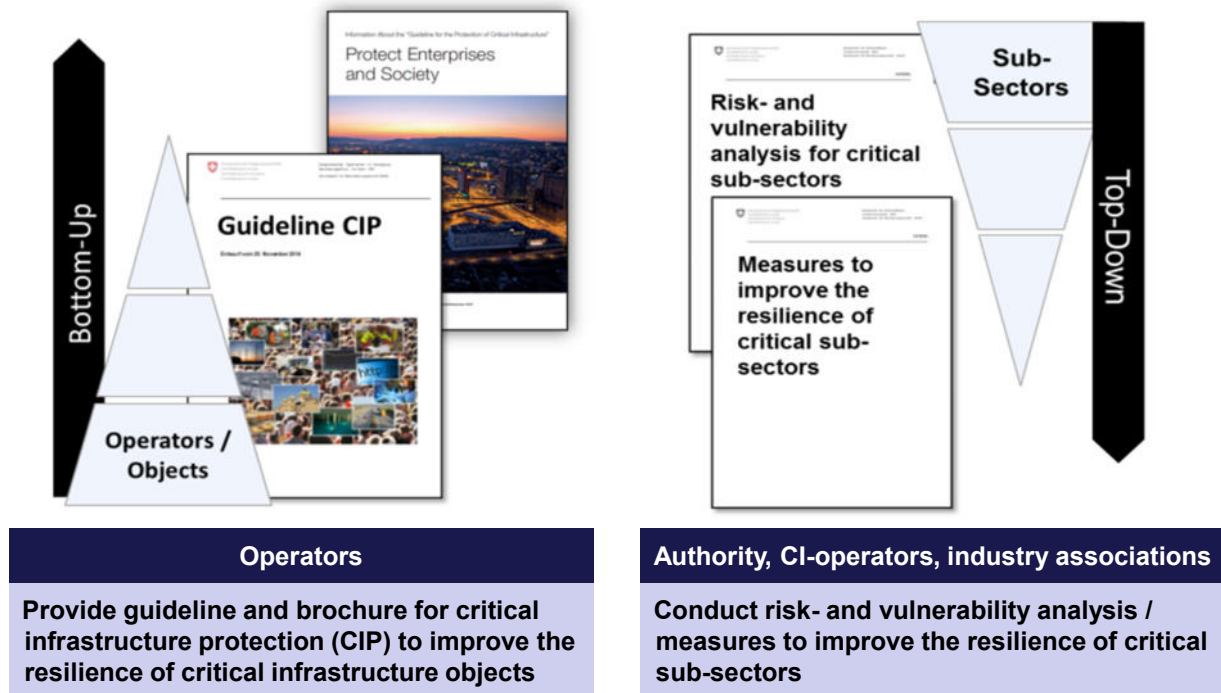
#### 1. What are critical infrastructures in Switzerland? CIP concept in Switzerland





## 2. Critical infrastructure guideline

### Twin approach to improve the resilience of CI



## 2. Critical infrastructure guideline

### Roles and tasks of expert groups

<b>FOCP</b>	<p><b>Role:</b> Project coordination</p> <p><b>Task:</b> Provides framework and tools Drafts and finalizes the reports</p>
<b>Regulators</b>	<p><b>Role:</b> Governing body</p> <p><b>Task:</b> Definition and controlling of set-up and requirements</p>
<b>Expert group</b> CI Operators, Industry Associations	<p><b>Role:</b> Experts, reviewer, approver</p> <p><b>Task:</b> Provides sub-sector expertise Contributes to and reviews the reports</p> <ul style="list-style-type: none"> <li>- general feedback</li> <li>- specific feedback concerning evaluation and damage estimation</li> </ul> <p>Update of the relevant stakeholders about results and findings</p>











## 2. Critical infrastructure guideline

Most relevant hazards

(to the financial sector as an example sector)

 Cyber attacks	
 Power supply outage Telecommunication outage	
 Earthquake	



## 3. Policy tools to foster collaboration

...and to reduce (cyber) vulnerabilities for CI

- Excerpts from CI-Inventory (classified)
- Guideline (and other tools) on comprehensive resilience concept
- Information exchange  
federal level – Cantons – CI operators
- Methodical support in CIP context  
(criticality assessment, hazard catalogue, hazard files, etc.)
- Support in CIP-related aspects (risk & vulnerability assessments, scenarios, contacts to federal offices and international partners, etc.)





## 4. Key insights from all sub-sectors

**Outages of CI can be triggered by various hazards. Cyber is treated as one of them, however for some sub-sectors the most pressing one. An integrated and risk based approach is therefore essential to identify the most severe weakness and their consequences.**

Most CI are particularly **depending on reliable power supply and uninterrupted access to telecommunication networks.**

**Emergency planning and business continuity management** are essential for handling and mastering grave incidents.



## Contact information

### **Dr. Stefan Brem**

Head of Risk Analysis and Research Coordination  
Federal Office for Civil Protection

Monbijoustrasse 51A, 3003 Bern

Tel +41 58 462 51 37

stefan.brem[at]babs.admin.ch

[www.civilprotection.ch](http://www.civilprotection.ch)

**CIP: [www.infraprotection.ch](http://www.infraprotection.ch)**

**National Risk Analysis: [www.risk-ch.ch](http://www.risk-ch.ch)**

**Cantonal Risk Analysis: [www.kataplan.ch](http://www.kataplan.ch)**

