

SECURITY AND RESILIENCE OF SNCF RESEAU, THE FRENCH NATIONAL RAILWAY INFRASTRUCTURE MANAGER

OECD-JRC Workshop on "System-thinking for critical
infrastructure resilience and security"



DIRECTION SÉCURITÉ, SÛRETÉ, RISQUES
SEPTEMBRE 2018



SOME MAJOR EVENTS



Fire of an electric transformer of an energy provider ...

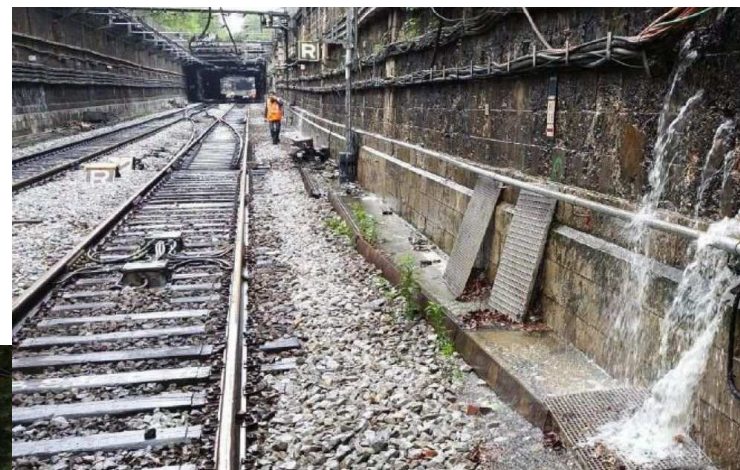
... provoke the freeze of train operations in Gare Montparnasse.
July 2018



SOME MAJOR EVENTS



Flood of the Seine river ...



... provoke the freeze of train operations of underground RER line. Juin 2016 and January 2018.



THE NETWORK



15000 TRAINS/DAY

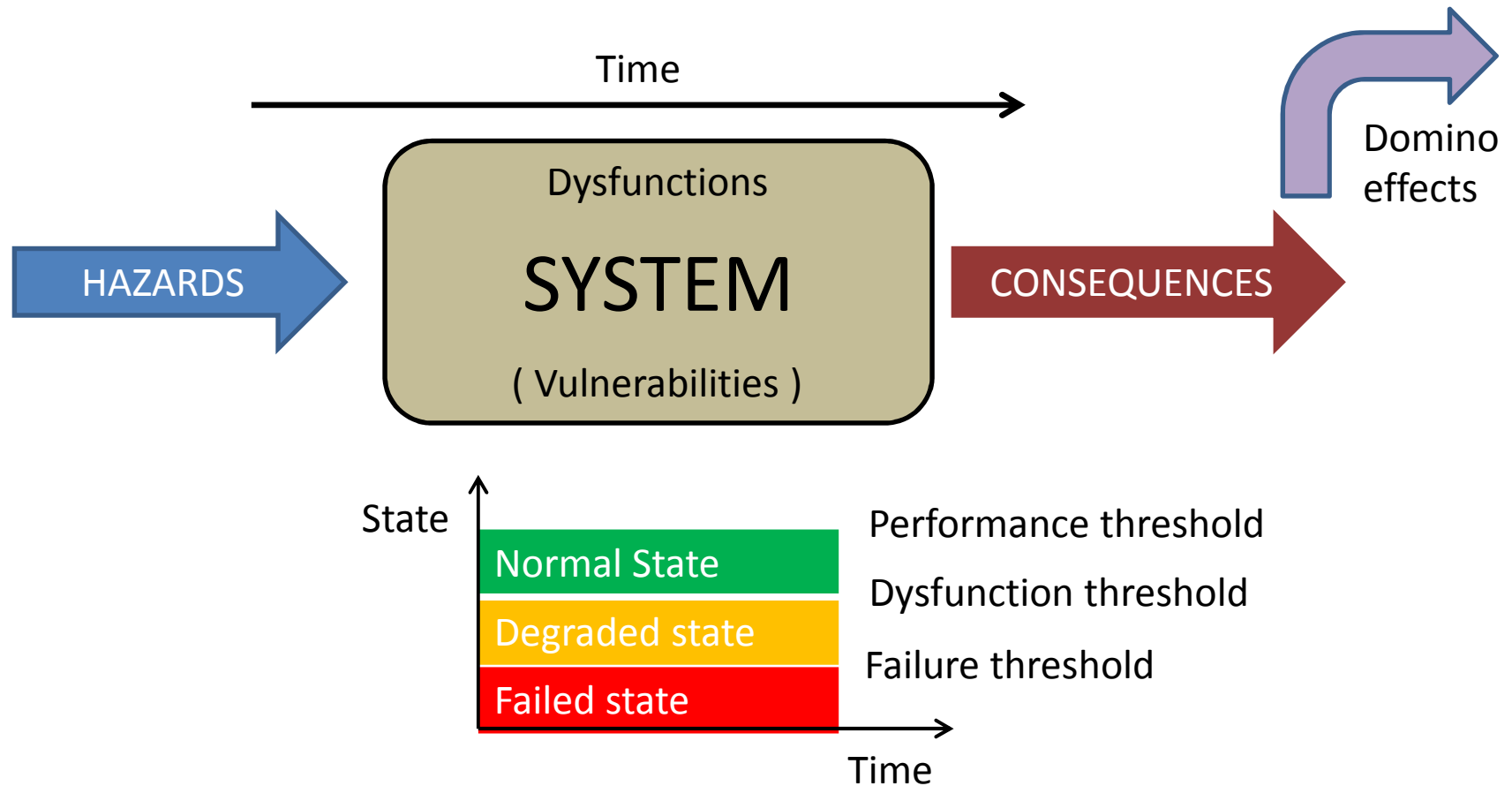


5 MILLIONS OF PASSENGERS

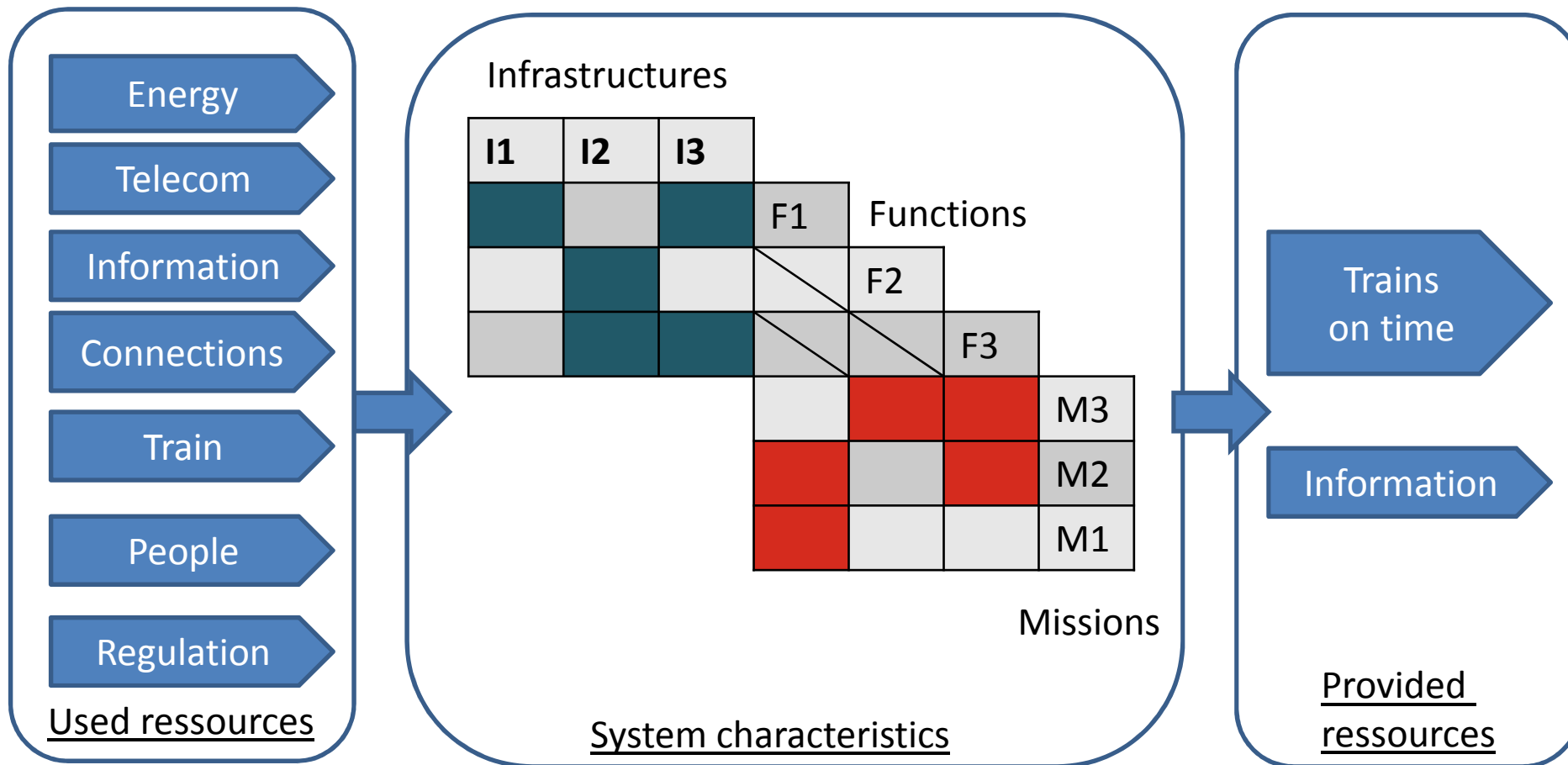


30 000 KM OF LINES

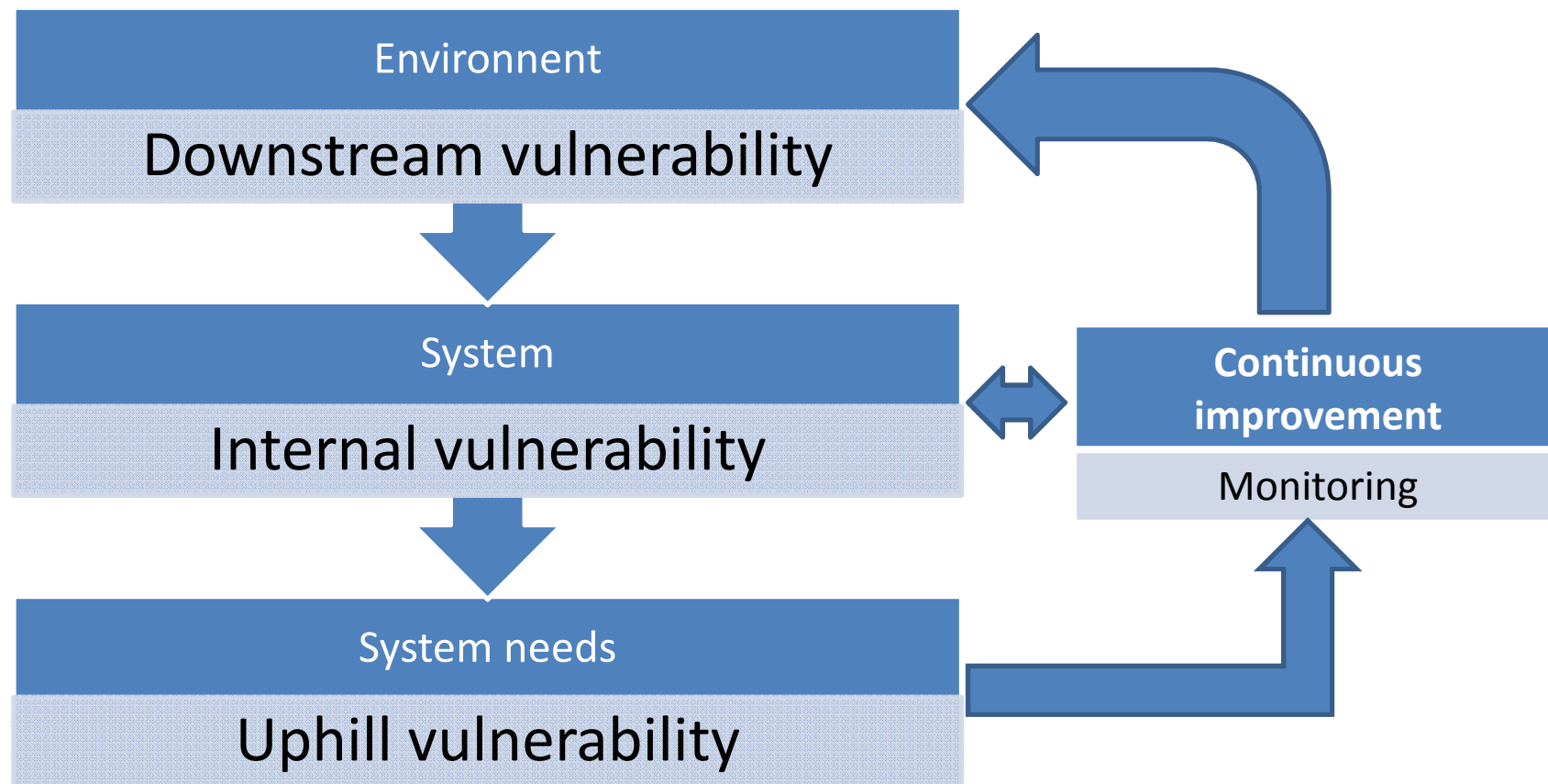
RISKS AND STATE OF THE SYSTEM



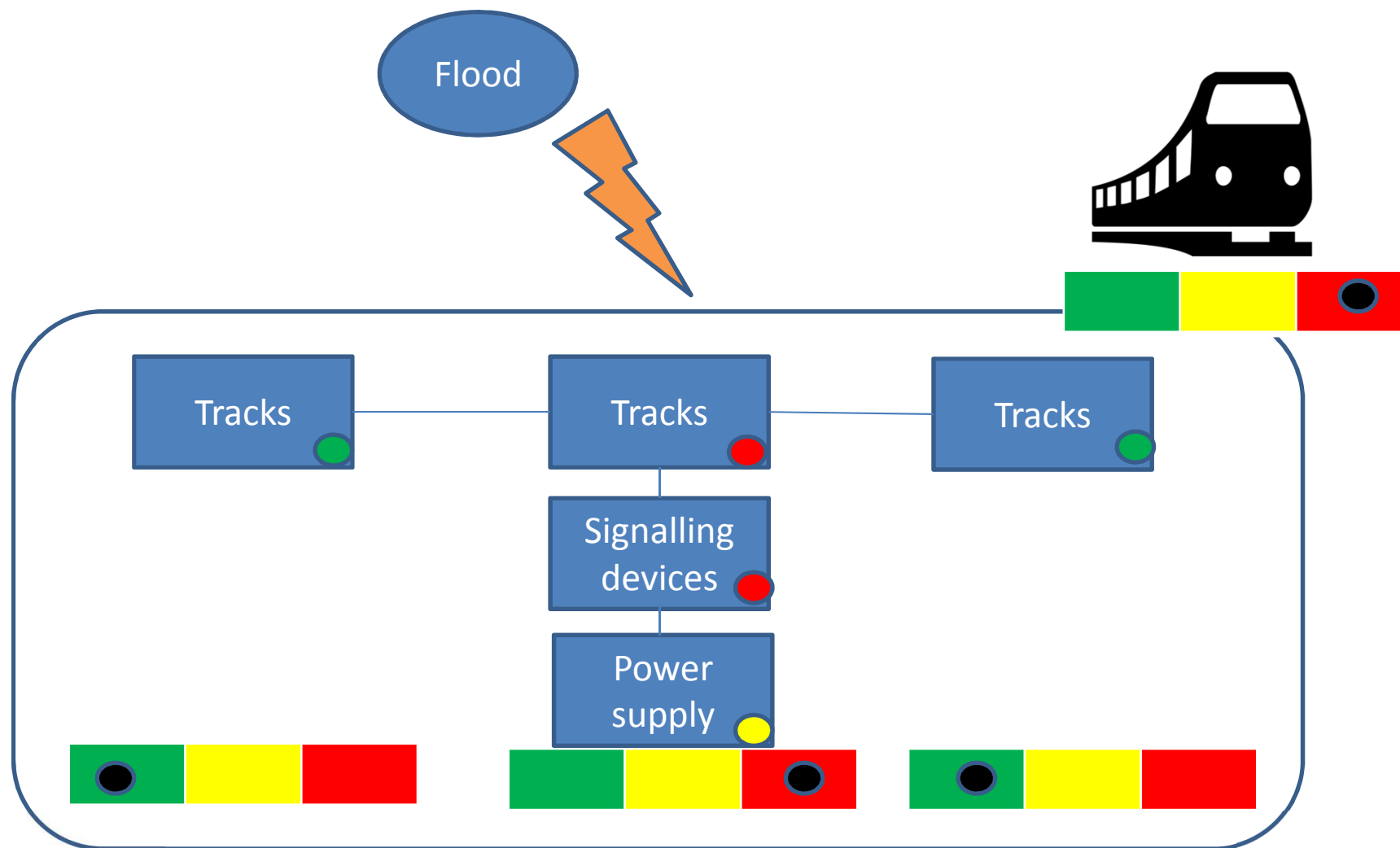
CHARACTERIZATION OF RAILWAY CRITICAL INFRASTRUCTURE



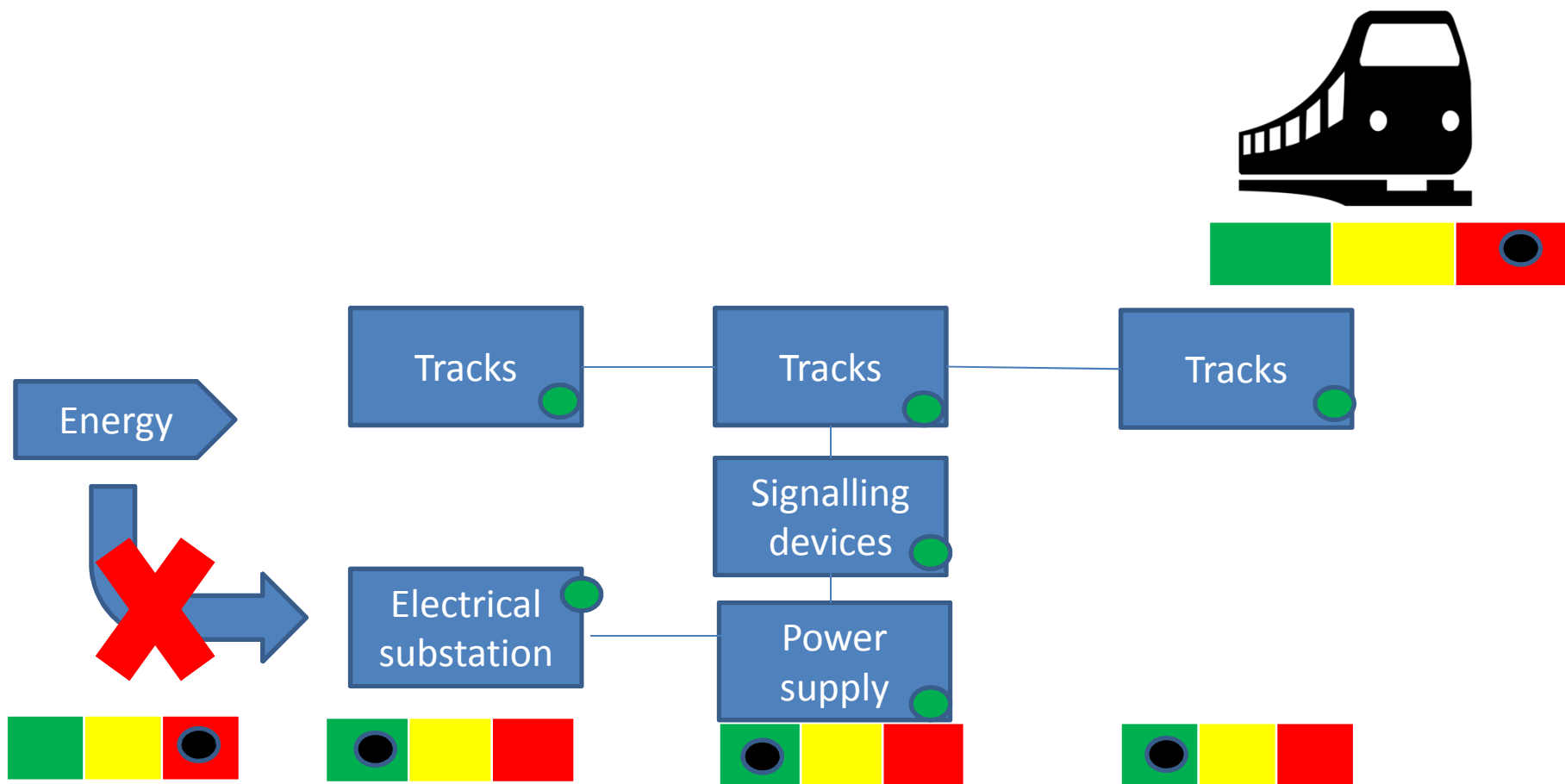
VULNERABILITIES ANALYSIS



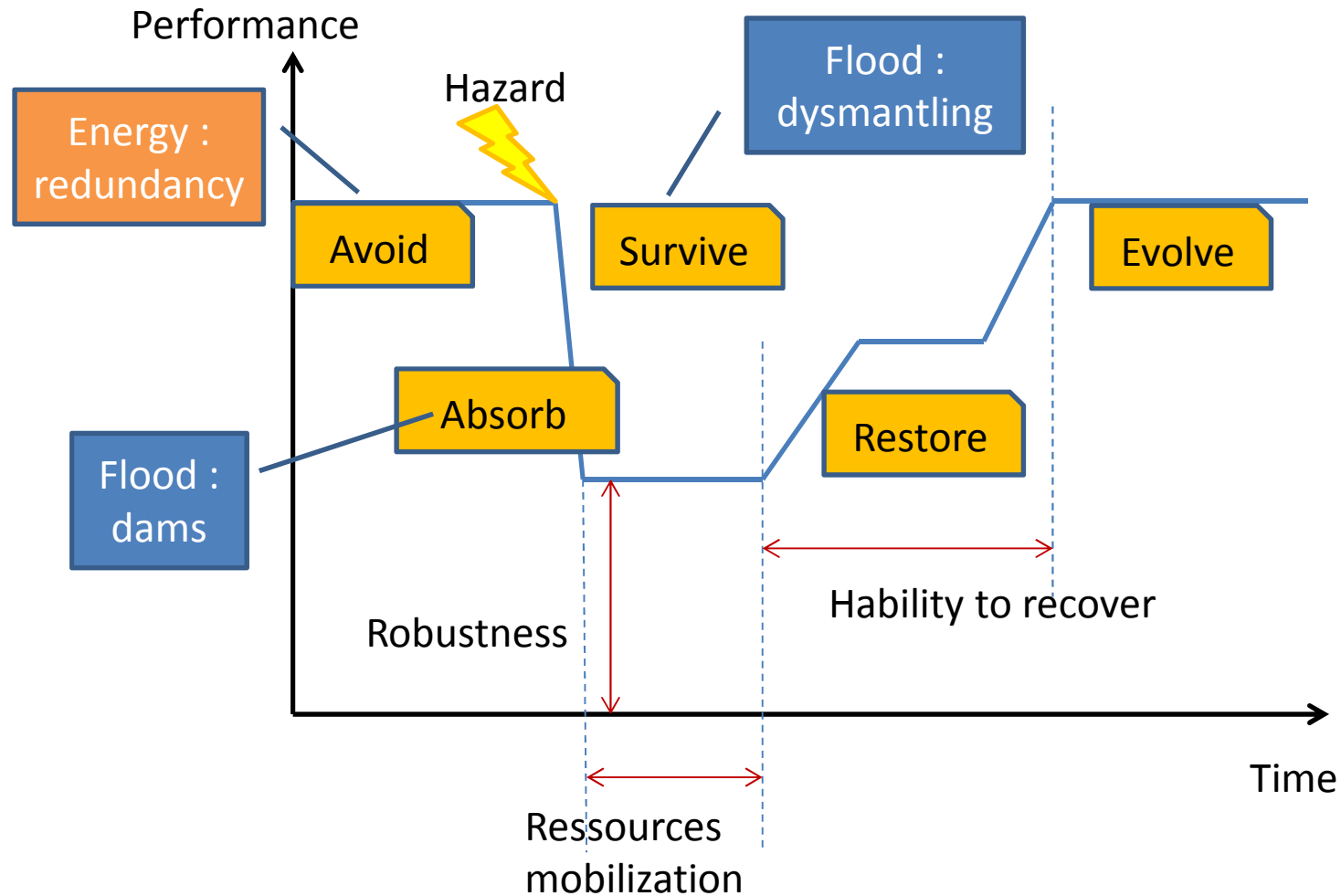
FLOOD - INTERNAL VULNERABILITY



FIRE – UPHILL VULNERABILITY



RESILIENCE OBJECTIVES



➤ Jean-Luc Planchet – Defense and security officer
jean-luc.planchet@reseau.sncf.fr



DIRECTION SÉCURITÉ, SÛRETÉ, RISQUES
SEPTEMBRE 2018

