



Low-Emission Development Strategies (LEDS): Technical, Institutional and Policy Lessons

Christa Clapp and Gregory Briner (OECD)

CCXG side event, 02/12/10

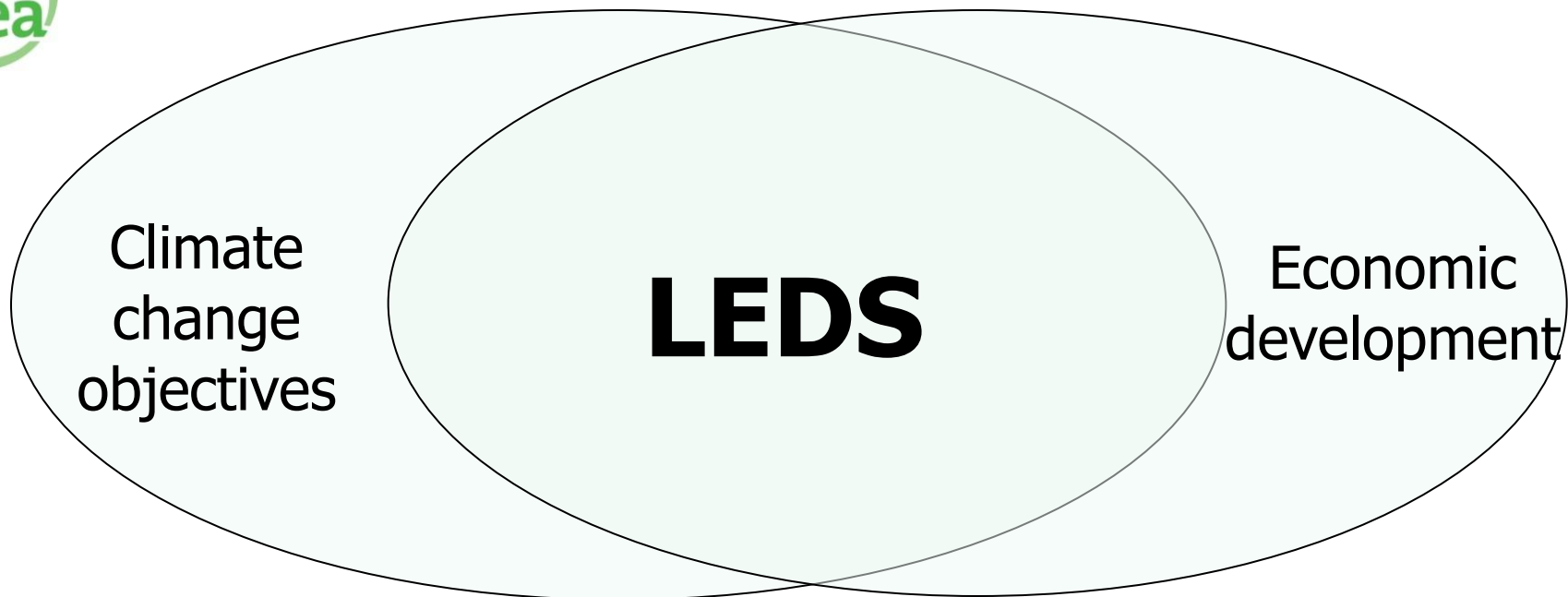
Presentation outline



- **What is a LEDS?**
- **Case studies**
- **LEDS planning cycle and lessons learned**
- **Potential benefits and challenges**
- **Concluding remarks**



What is a LEDS?



Three criteria:

1. Covers both climate change and development
2. Senior economic policymakers involved
3. Sources of financial support identified

Case studies

UK

Low Carbon Transition Plan

Israel

National Climate Change Strategy
(under development)

Thailand

Strategic Plan on
Climate Change

Mexico

Special Programme on
Climate Change

Guyana

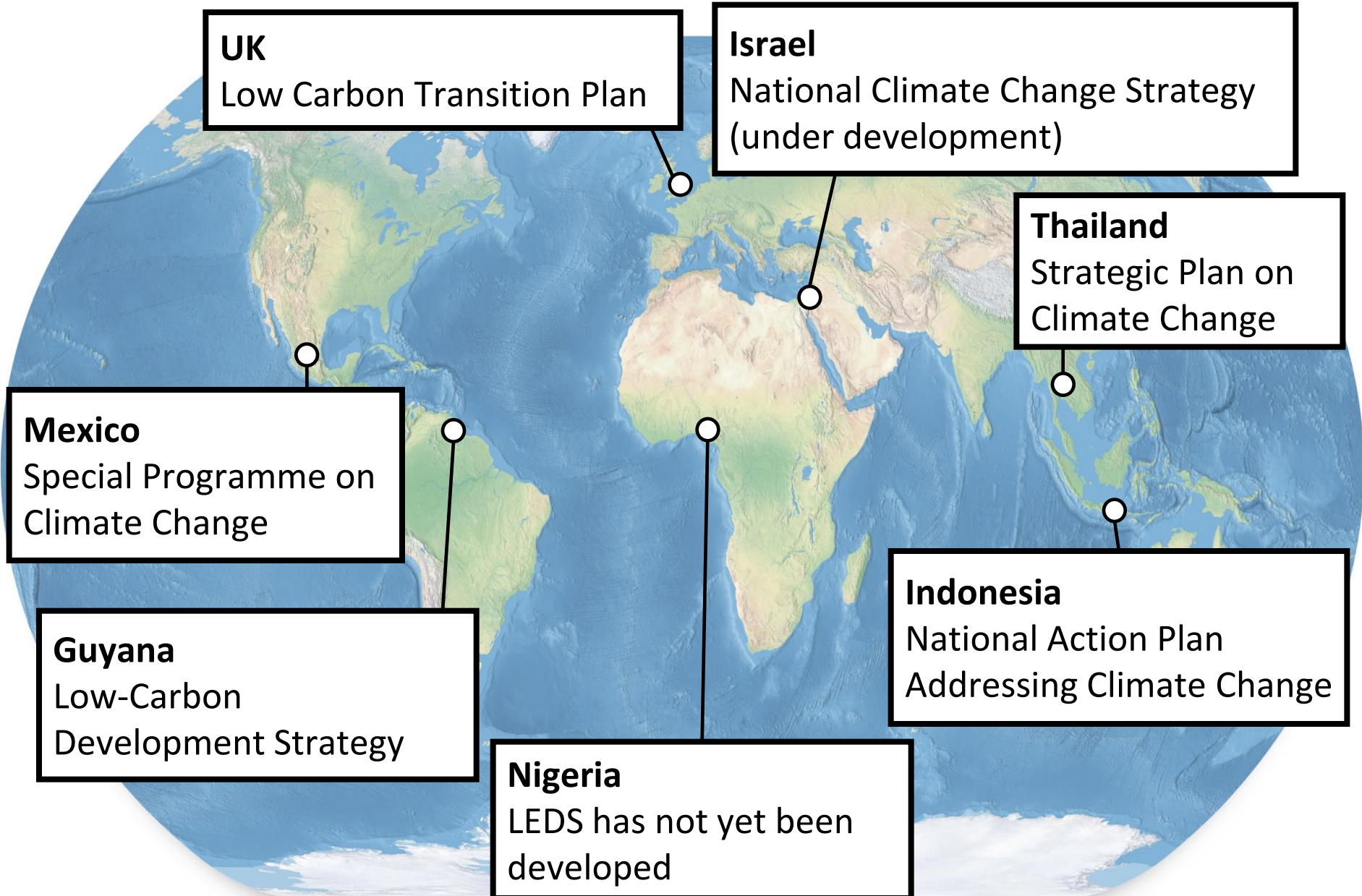
Low-Carbon
Development Strategy

Indonesia

National Action Plan
Addressing Climate Change

Nigeria

LEDs has not yet been
developed



LEDS planning cycle and lessons learned



1. Formulating goals

Align development and climate change goals
Build on past reports and strategies
Analyse appropriate and reliable data

2. Institutional framework

Clearly define roles
Interministerial participation
Coordinate stakeholder consultation

Clear leadership
Stakeholder consultation

3. Prioritising policies

Identify & address implementation barriers
Consider policy synergies and tradeoffs
Consider policy interactions across sectors

4. Implementation

Identify sources of finance
Coordinate funding disbursement
Implement policies

5. Monitoring

Track progress towards goals
Learn from experience
Update and improve LEDS

Potential benefits and challenges

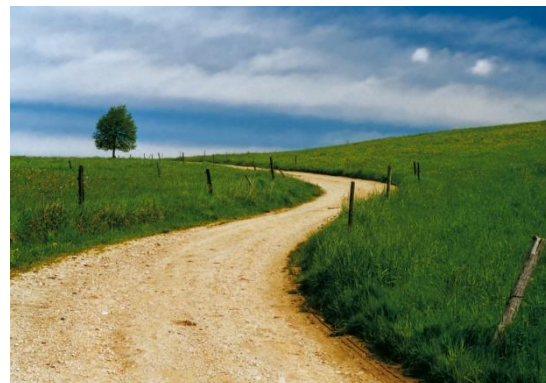


Benefits

- Policy integration
- Coordination
- Communication
- Early signals for private sector
- Global emissions trajectory
- Financing needs

Challenges

- Agreement across government
- Data issues
- Barriers to implementation
- Capacity



© danielschoenen / Fotolia.com

Concluding remarks

- **LEDS provides added-value for domestic and international stakeholders**
- **Support is needed to address challenges in LEDS preparation**
- **Preparing a LEDS should not slow down NAMA implementation**
- **LEDS should not be a pre-condition for financing**

Contact information

Christa Clapp

OECD Environment Directorate
christa.clapp@oecd.org
+33 (0)1 45 24 16 89

Gregory Briner

OECD Environment Directorate
gregory.briner@oecd.org
+33 (0)1 45 24 83 45

Climate Change Expert Group

www.oecd.org/env/cc/ccxg