

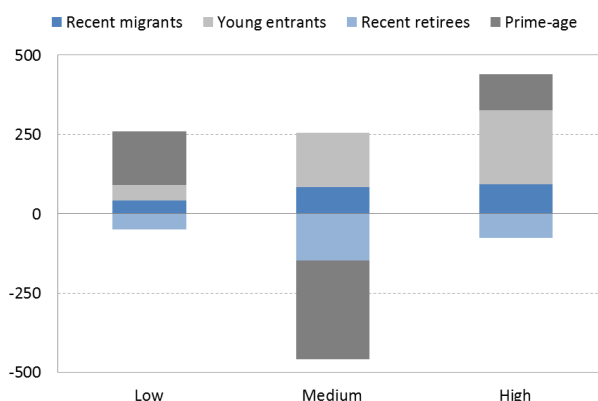
# Migration-Demography Database

## Norway

OECD data show that the labour force of Norway grew by 15.6% between 2005 and 2015, with young entrants contributing 19 percentage points, recent migrants 9.1 percentage points (including recent EU migrants, which contributed 5.2 percentage points) and retirees -11.4 percentage points.

The highly-educated labour force increased by 47%, with young entrants contributing 30.3 percentage points and recent migrants 11.9 percentage points. The share of highly-educated people among recent immigrants was 42.3%, lower than among young entrants where it was 51.8%.

### Contribution of demographic groups to labour force growth by education level in Norway, 2005-2015 (thousands)



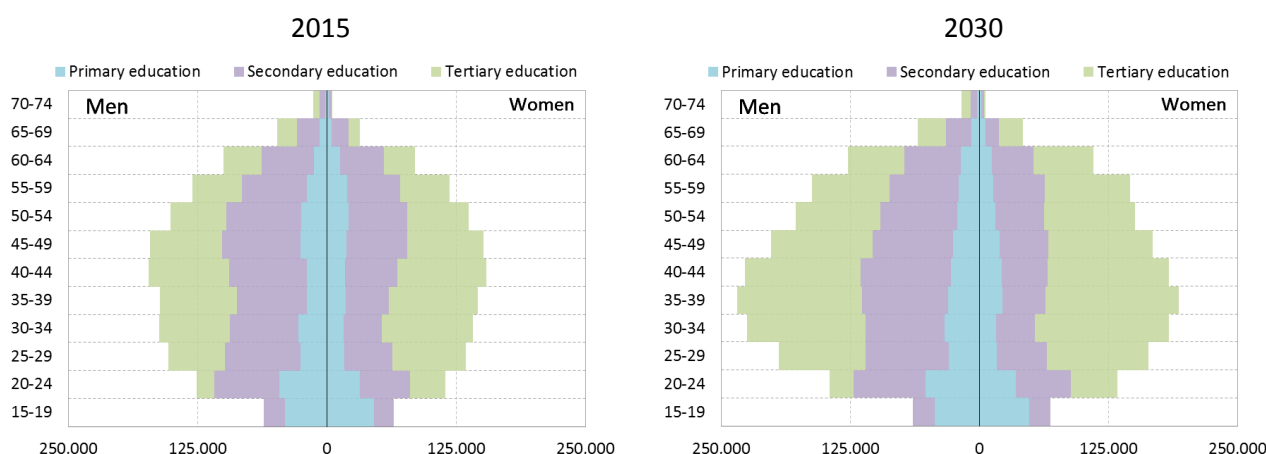
Note: See the methodological appendix of Meghnagi and Spielvogel (2018), "The contribution of migration to the dynamics of the labour force in OECD countries: 2005-2015", *OECD Social, Employment and Migration Working Papers*, No. 203, OECD Publishing, Paris.

Source: OECD estimates.

According to OECD projections, if net migration rates and labour force participation rates remain the same as between 2010-2015 and recent trends in educational attainment continue, the total labour force of Norway will increase by 23.8% between 2015 and 2030. The number of highly-educated people in the labour force will increase by 50%.

Over this period, the share of highly-educated people in the foreign-born labour force will increase from 41.7% to 47.5% (from 44.9% to 50.6% among EU-born immigrants, and from 38.5% to 44.3% among non-EU-born immigrants).

### Age and sex distribution of the labour force of Norway by education level, in 2015 and 2030 (projection)



Note: The 2030 projection shown here assumes baseline migration, medium trend education and baseline labour force participation. For the definitions of those variants, see the methodological appendix of Spielvogel and Meghnagi (2018), "Assessing the role of migration in European labour force growth by 2030", *OECD Social, Employment and Migration Working Papers*, No. 204, OECD Publishing, Paris.

Source: OECD estimates.

Contact: [migration.contact@oecd.org](mailto:migration.contact@oecd.org)

 [www.oecd.org/migration/migration-demography](http://www.oecd.org/migration/migration-demography)



This note was produced with the financial assistance of the European Union Programme for Employment and Social Innovation "EaSI" (2014-2020).