

OECD Family Database

www.oecd.org/els/social/family/database

4th meeting of the ECEC Network

30th October, 2008
María del Carmen Huerta
OECD Social Policy Division

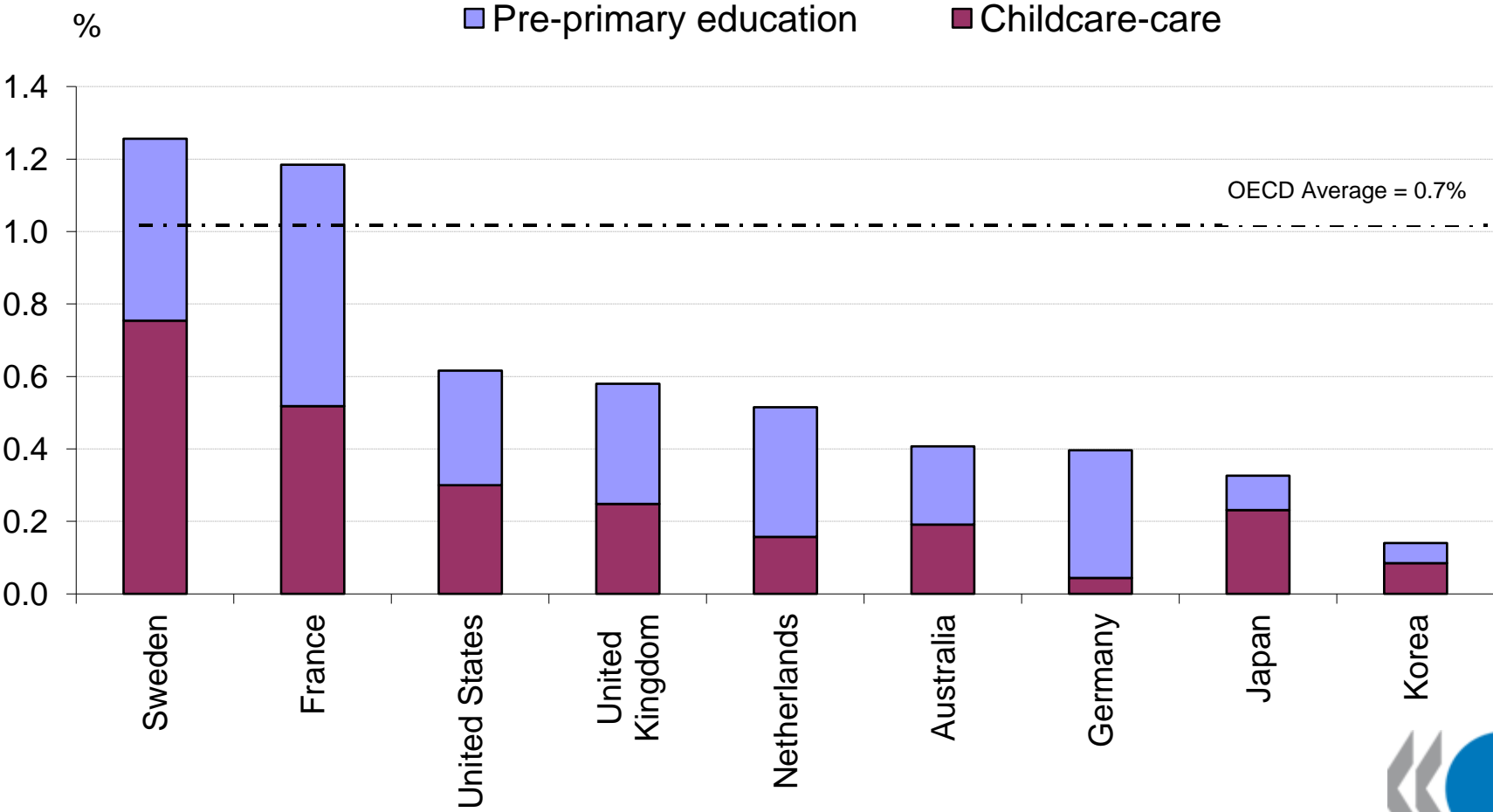
Family database structure

- Family composition
- Labour Market Status of Families
- Public Policies for Families and Children
- Child Outcomes

Public Policies for Families with Children

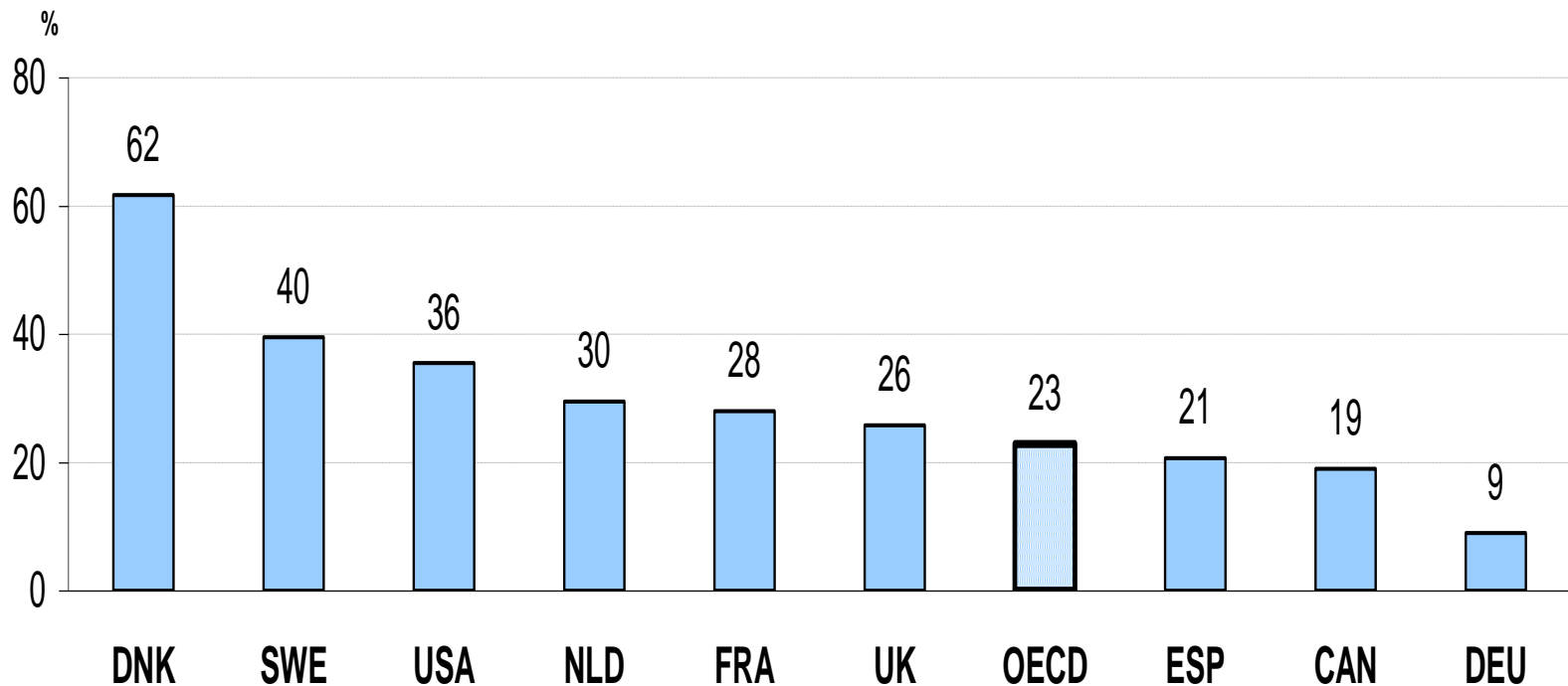
- PF10. Public spending on childcare and early education
- PF11. Enrolment in day-care and pre-schools
- PF12. Childcare support
- PF13. Typology of childcare
- PF14. Quality of childcare
- PF15. Out-of-school hours care

Public spending on families (2005) vary across countries



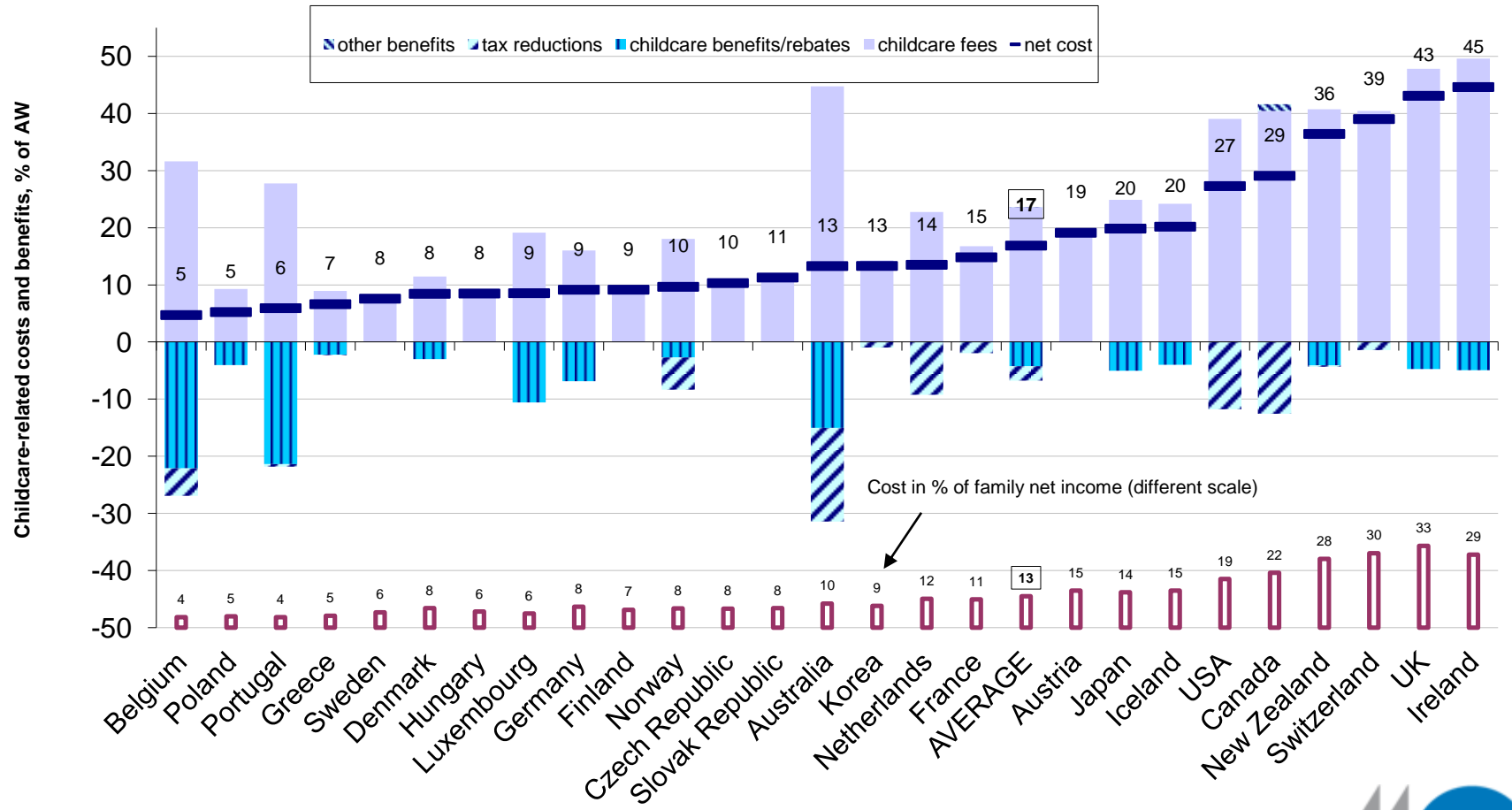
.. as does childcare enrolment (children aged under 3)

Average enrolment rate of children aged under three years of age in formal childcare (2004)



Data for Germany concern 2001; data for France reflect 2002; and data for Denmark and United States concern 2005.

Out-of-pocket childcare costs for a two-earner couple: full-time care at a typical childcare centre



Source: OECD Tax-Benefit Models

Next steps for the Family Database

- Continue compiling and updating indicators
- Address data gaps
 - Out of School Hours Care
- Construct indicators for EU non-OECD countries

File Edit View Favorites Tools Help

Back Forward Stop Home Search Favorites Refresh Print

Address http://www.oecd.org/document/4/0,3343,en_2649_34819_37836996_1_1_1_1,00.html Go Links >>

Google [www.oecd.org/els/employment](#) Go 52 blocked Check AutoLink AutoFill Send to Settings



Help/FAQ | MyOECD | Français

Search >>

[More Search options](#)

Directorate for Employment, Labour and Social Affairs

Directorate for Employment, Labour and Social Affairs

- ▼ Social Policy
 - Benefits and Wages
 - Family Policies
 - Pension Systems
 - Social Expenditure
 - Social Indicators
- > Employment Policy
- > Health Policy and Data
- > Sickness and Disability Policies
- > Labour Market and Social Policies in Non-Member Countries
- > Trends in International Migration and in Migration Policies

Back to

- > OECD home page
- > Department List

Related Topics

- > Education

Home: Family Policies > OECD Family database

- > About
- > Statistics
- > Publications & Documents
- > Information by Country

OECD Family database

send print

Bookmark this page: www.oecd.org/els/social/family/database

Following up on the *OECD Babies and Bosses* reviews on the reconciliation of work and family life in selected Member States, and in view of the strong demand for cross-national indicators on the situation of families and children, the OECD has developed an on-line database on family outcomes and family policies with indicators for all OECD countries.

The database brings together information from different OECD databases (for example, the [OECD Social Expenditure database](#), the [OECD Benefits and Wages database](#), or the [OECD Education database](#), and databases maintained by other (international) organisations.

Development of the Family database is an ongoing process and release or updating of indicators is not linked to any particular point in time. Not all indicators can already be presented on cross-national basis. The first batch of indicators was released by the end of 2006, but work is ongoing on the preparation of new indicators for release throughout 2007. We also intend to update existing indicators on OECD Education database a regular basis.

Don't miss

- > Social, Employment and Migration Working Papers
- > Social Policy Related Sites
- > Early Childhood Education and Care Home Page
- > Contact Us
- > Site Map

Editor's choice

