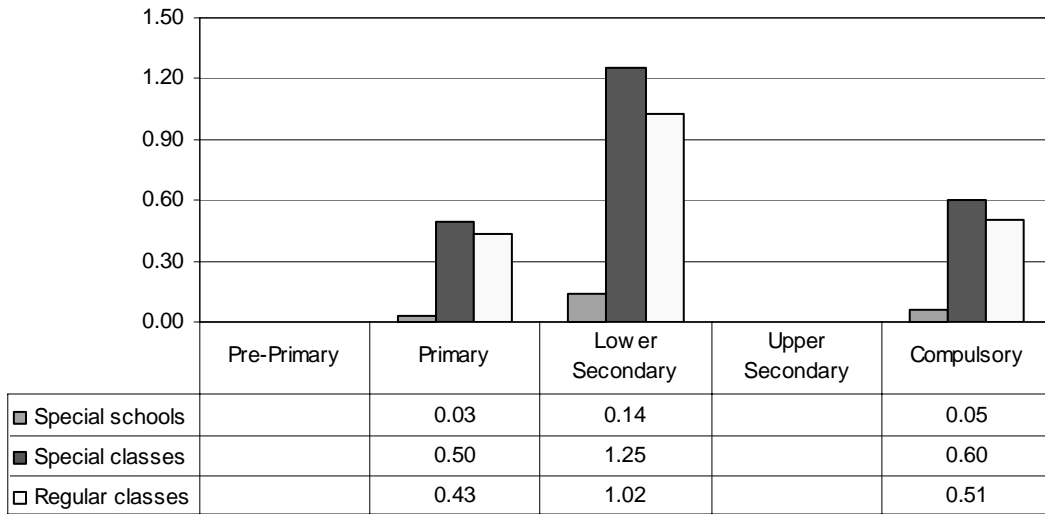


UNITED STATES

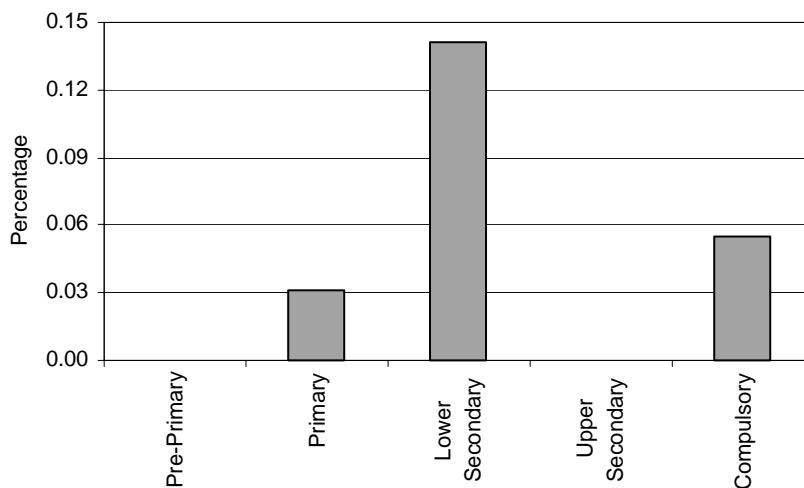
Category 1 Cross-national Category A – “Mental retardation” means significantly sub-average general intellectual functioning existing concurrently with deficits in adaptive behaviour and manifested during the developmental period that adversely affects a child’s educational performance. (34 Code of Federal Regulations §300.7.)

Proportion of students with mental retardation by phases of education in special schools, special classes and regular classes



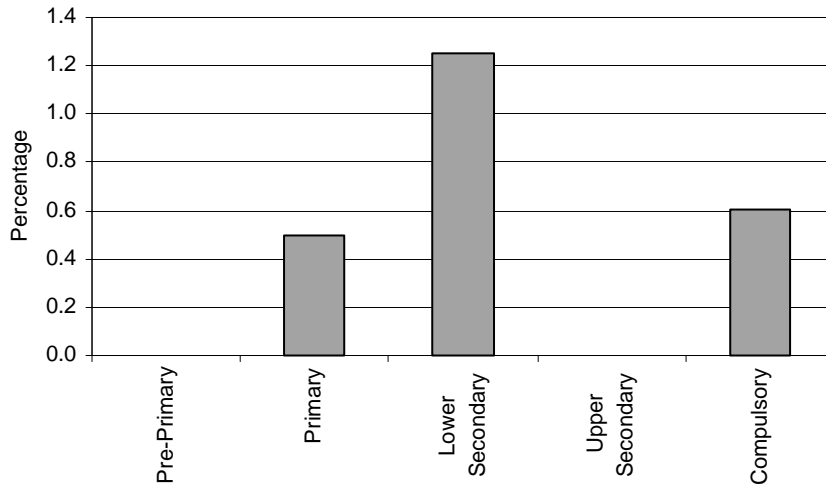
Note: Pre-primary education data are missing.
Upper secondary education data are included in lower secondary data.

Special Schools – Category 1. Total percentage of students with mental retardation falling within the resources definition, by phase of education



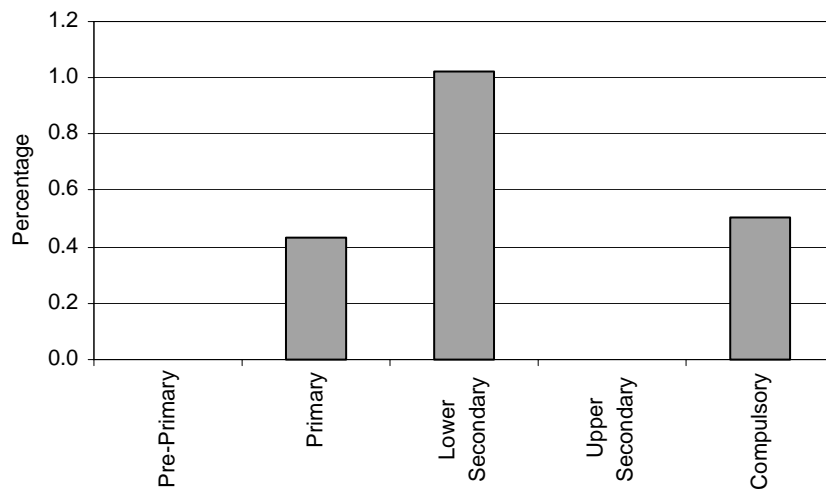
Note: Pre-primary education data are missing.
Upper secondary education data are included in lower secondary data.

Special Classes – Category 1. Total percentage of students with mental retardation falling within the resources definition, by phase of education



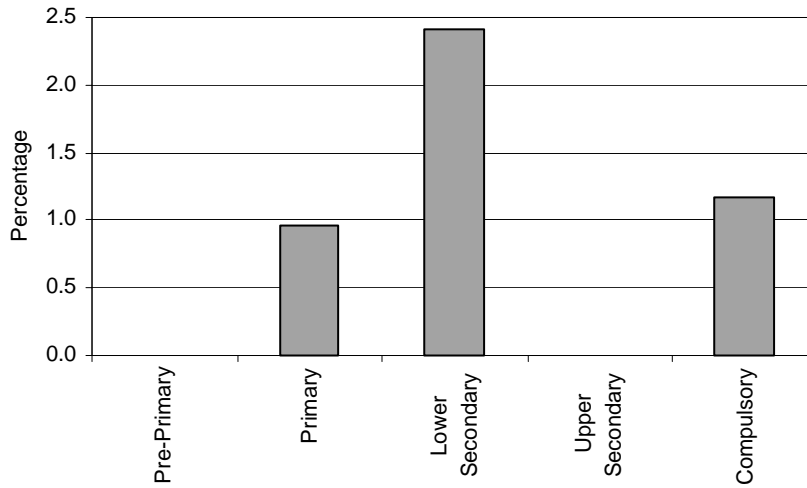
Note: Pre-primary education data are missing.
Upper secondary education data are included in lower secondary data.

Regular Classes – Category 1. Total percentage of students with mental retardation falling within the resources definition, by phase of education



Note: Pre-primary education data are missing.
Upper secondary education data are included in lower secondary data.

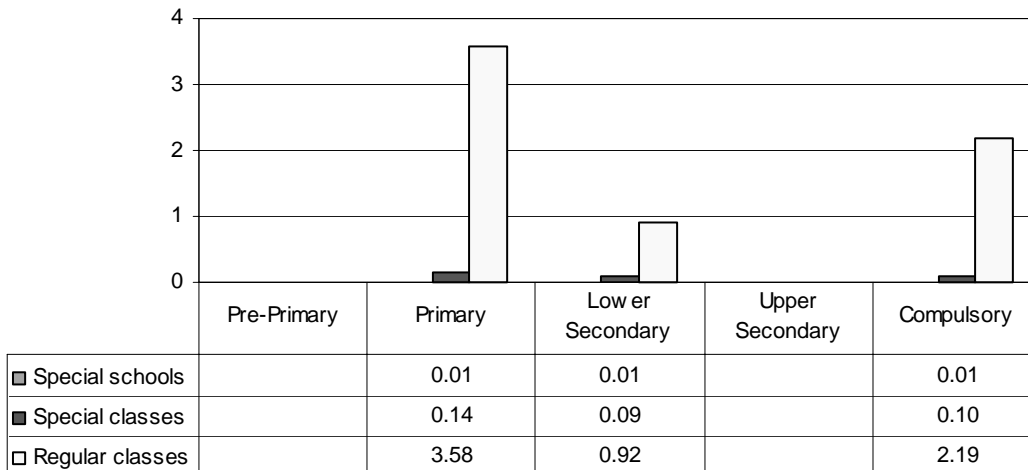
Total – Category 1. Total percentage of students with mental retardation falling within the resources definition



Note: Pre-primary education data are missing.
Upper secondary education data are included in lower secondary data.

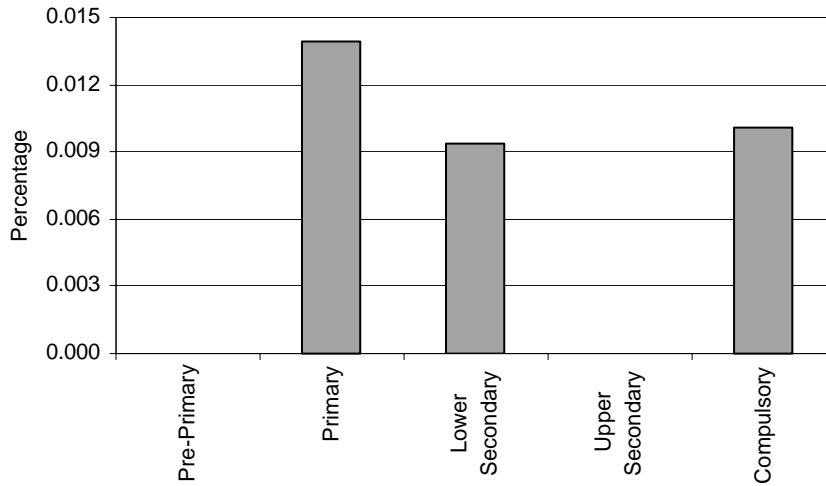
Category 2 Cross-national Category A – “Speech or language impairment” means a communication disorder such as stuttering, impaired articulation, language impairment, or a voice impairment that adversely affects a child's educational performance. (34 Code of Federal Regulations §300.7.)

Proportion of students with speech or language impairment by phases of education in special schools, special classes and regular classes



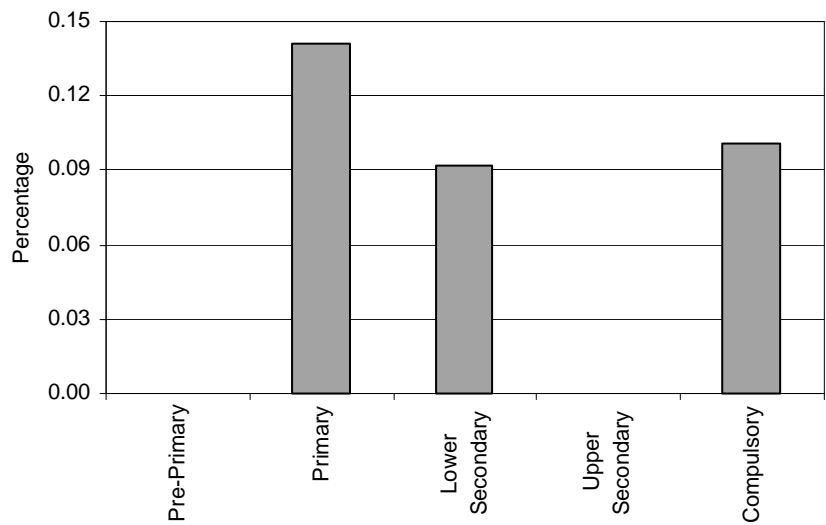
Note: Pre-primary education data are missing.
Upper secondary education data are included in lower secondary data.

Special Schools – Category 2. Total percentage of students with speech or language impairment falling within the resources definition, by phase of education



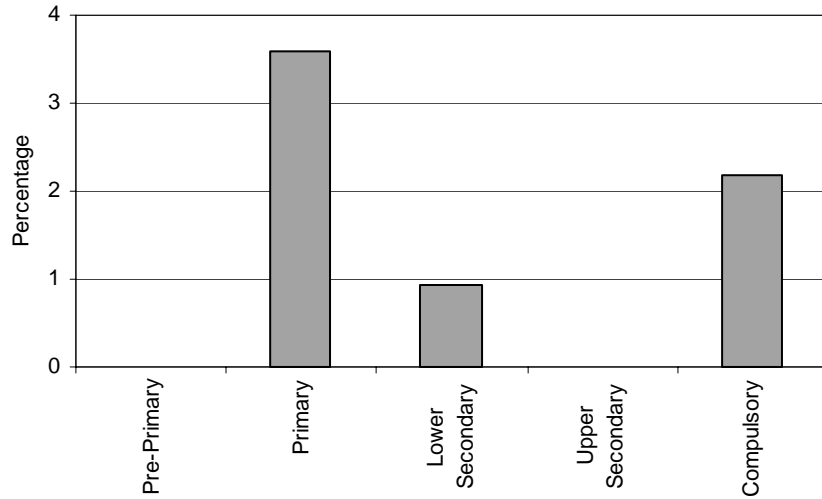
Note: Pre-primary education data are missing.
Upper secondary education data are included in lower secondary data.

Special Classes – Category 2. Total percentage of students with speech or language impairment falling within the resources definition, by phase of education



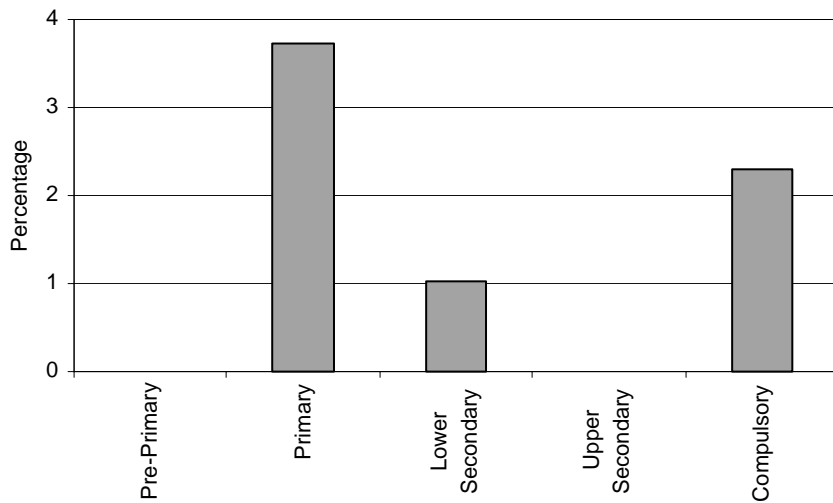
Note: Pre-primary education data are missing.
Upper secondary education data are included in lower secondary data.

Regular Classes – Category 2. Total percentage of students with speech or language impairment falling within the resources definition, by phase of education



Note: Pre-primary education data are missing.
Upper secondary education data are included in lower secondary data.

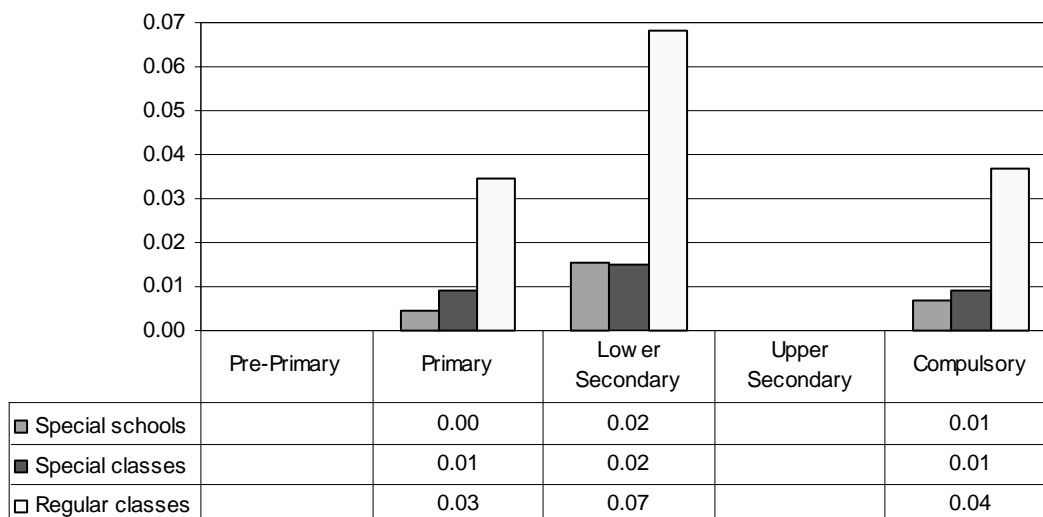
Total – Category 2. Total percentage of students with speech or language impairment falling within the resources definition



Note: Pre-primary education data are missing.
Upper secondary education data are included in lower secondary data.

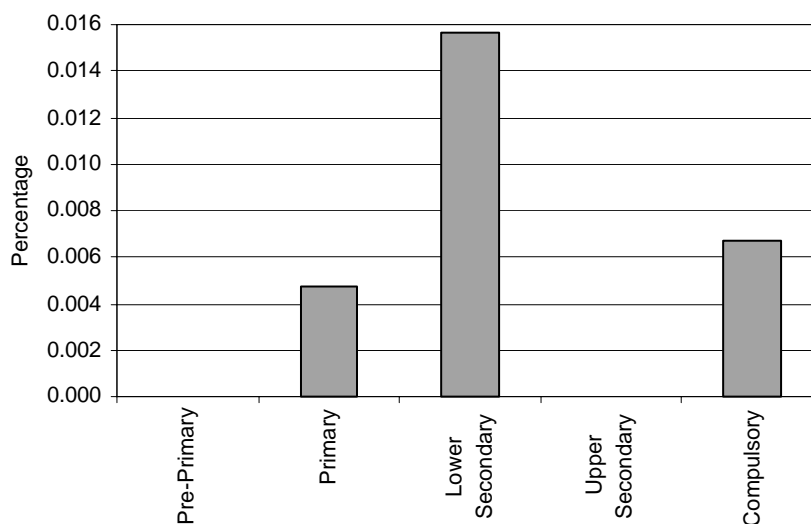
Category 3 Cross-national Category A – “Visual impairment including blindness” means impairment in vision that, even with correction, adversely affects a child's educational performance. The term includes both partial sight and blindness. (34 Code of Federal Regulations §300.7.)

Proportion of students with visual impairments by phases of education in special schools, special classes and regular classes



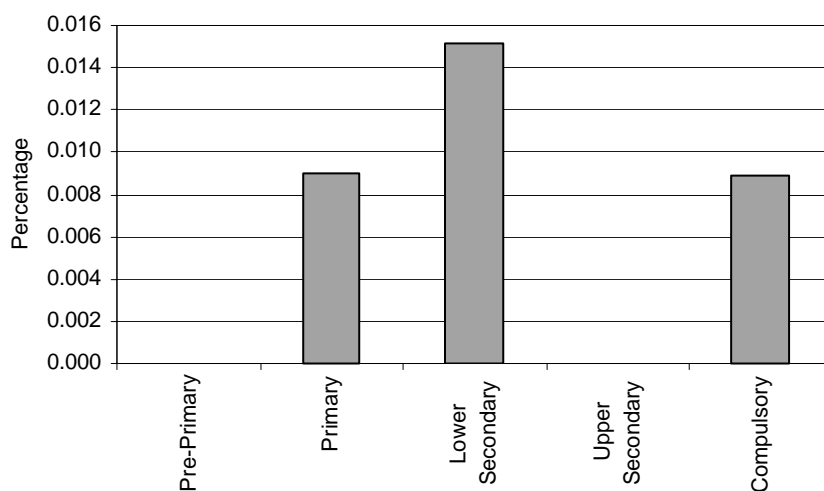
Note: Pre-primary education data are missing.
Upper secondary education data are included in lower secondary data.

Special Schools – Category 3. Total percentage of students with visual impairments falling within the resources definition, by phase of education



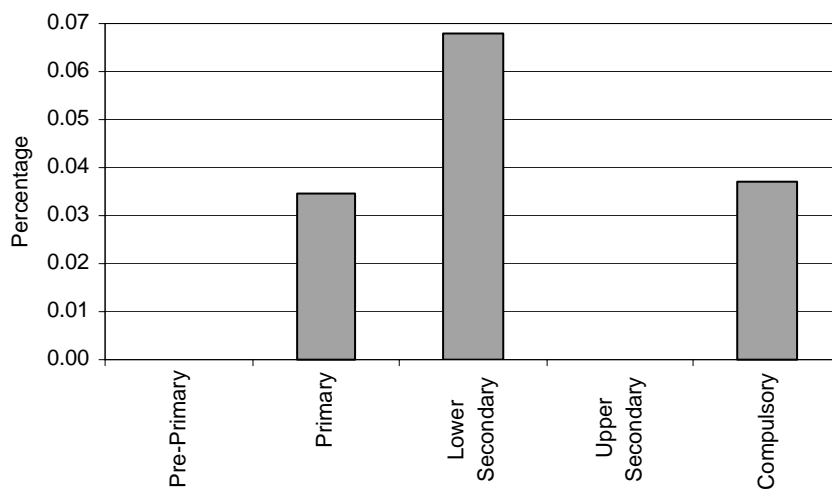
Note: Pre-primary education data are missing.
Upper secondary education data are included in lower secondary data.

Special Classes – Category 3. Total percentage of students with visual impairments falling within the resources definition, by phase of education



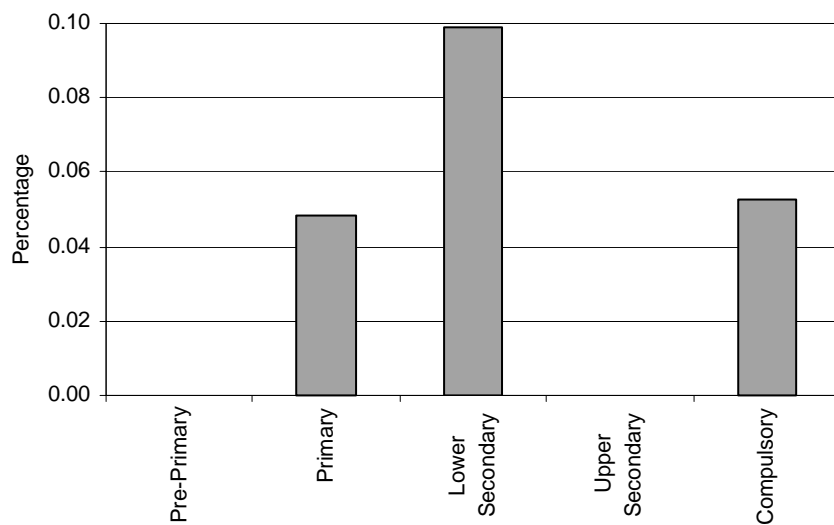
Note: Pre-primary education data are missing.
Upper secondary education data are included in lower secondary data.

Regular Classes – Category 3. Total percentage of students with visual impairments falling within the resources definition, by phase of education



Note: Pre-primary education data are missing.
Upper secondary education data are included in lower secondary data.

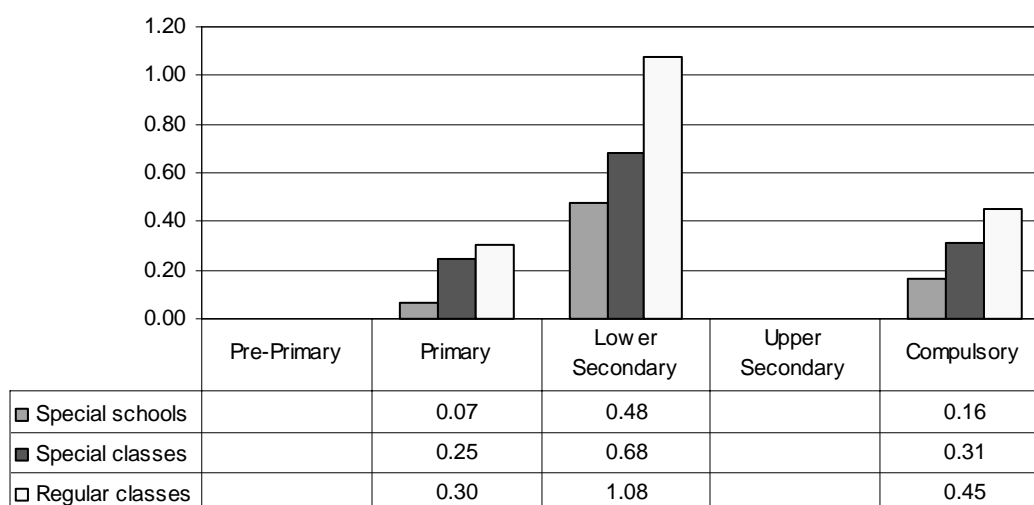
Total – Category 3. Total percentage of students with visual impairments falling within the resources definition



Note: Pre-primary education data are missing.
Upper secondary education data are included in lower secondary data.

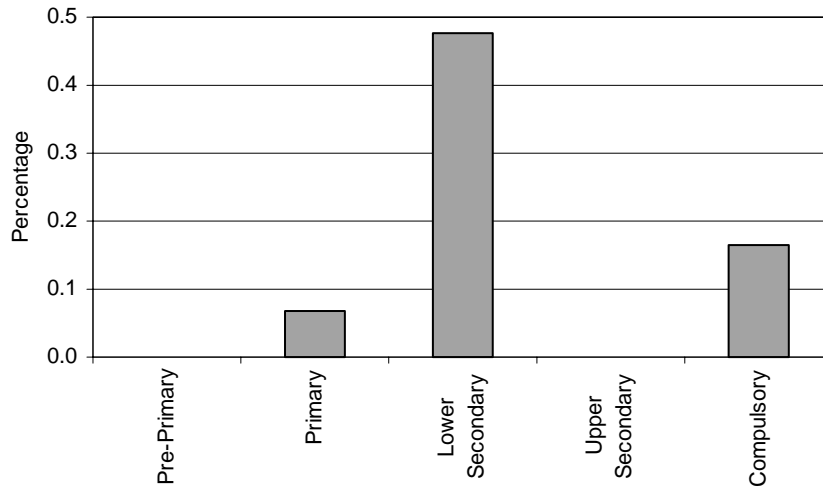
Category 4 Cross-national Category B – “Emotional disturbance” is defined as follows: (i) The term means a condition exhibiting one or more of the following characteristics over a long period of time and to a marked degree that adversely affects a child's educational performance - (A) An inability to learn that cannot be explained by intellectual, sensory, or health factors; (B) An inability to build or maintain satisfactory interpersonal relationships with peers and teachers; (C) Inappropriate types of behaviour or feelings under normal circumstances; (D) A general pervasive mood of unhappiness or depression; or (E) A tendency to develop physical symptoms or fears associated with personal or school problems. (ii) The term includes schizophrenia. The term does not apply to children who are socially maladjusted, unless it is determined that they have a serious emotional disturbance. (34 Code of Federal Regulations §300.7.)

Proportion of students with emotional disturbances by phases of education in special schools, special classes and regular classes



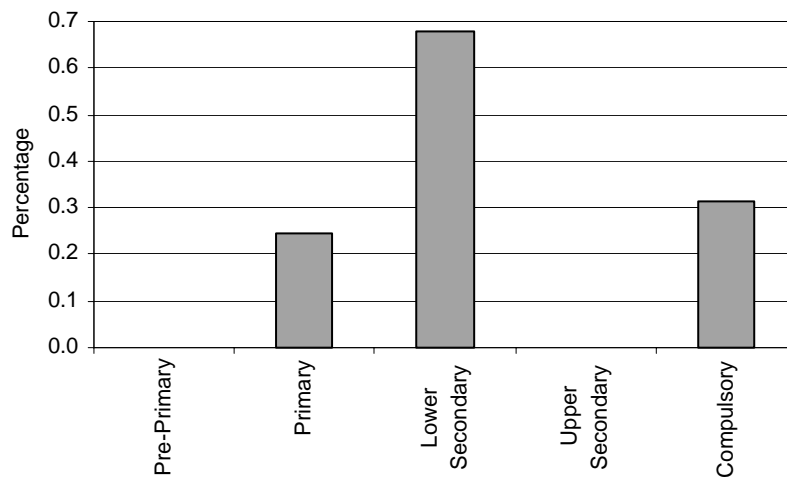
Note: Pre-primary education data are missing.
Upper secondary education data are included in lower secondary data.

Special Schools – Category 4. Total percentage of students with emotional disturbances falling within the resources definition, by phase of education



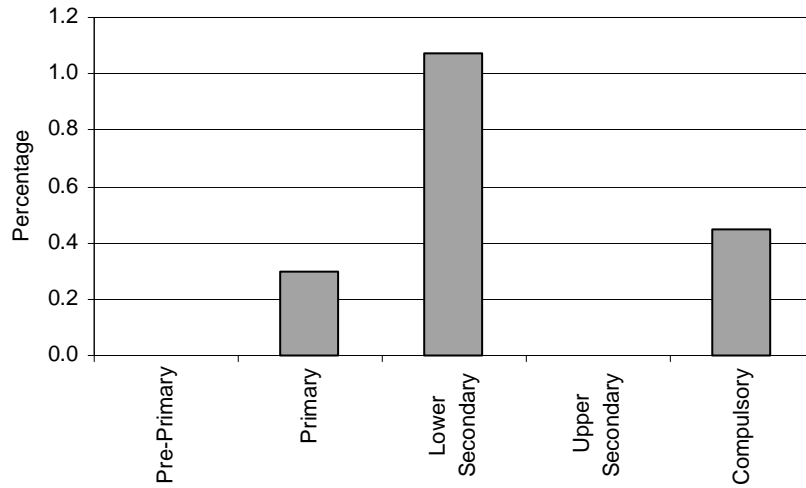
Note: Pre-primary education data are missing.
Upper secondary education data are included in lower secondary data.

Special Classes – Category 4. Total percentage of students with emotional disturbances falling within the resources definition, by phase of education



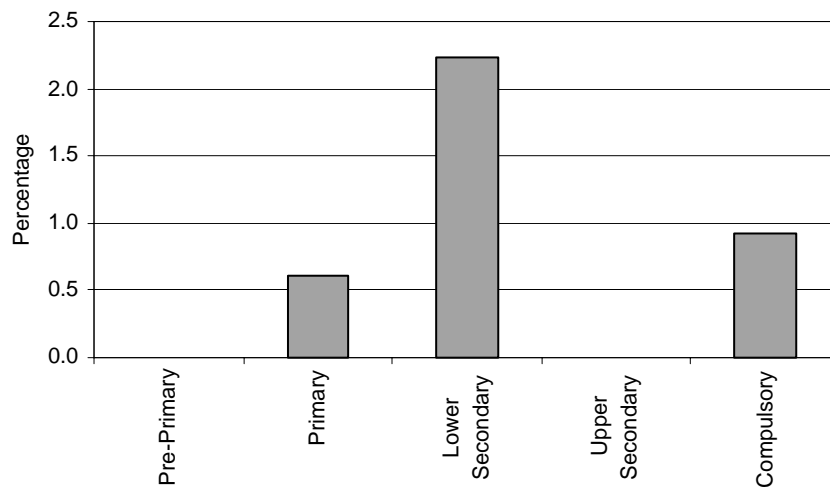
Note: Pre-primary education data are missing.
Upper secondary education data are included in lower secondary data.

Regular Classes – Category 4. Total percentage of students with emotional disturbances falling within the resources definition, by phase of education



Note: Pre-primary education data are missing.
Upper secondary education data are included in lower secondary data.

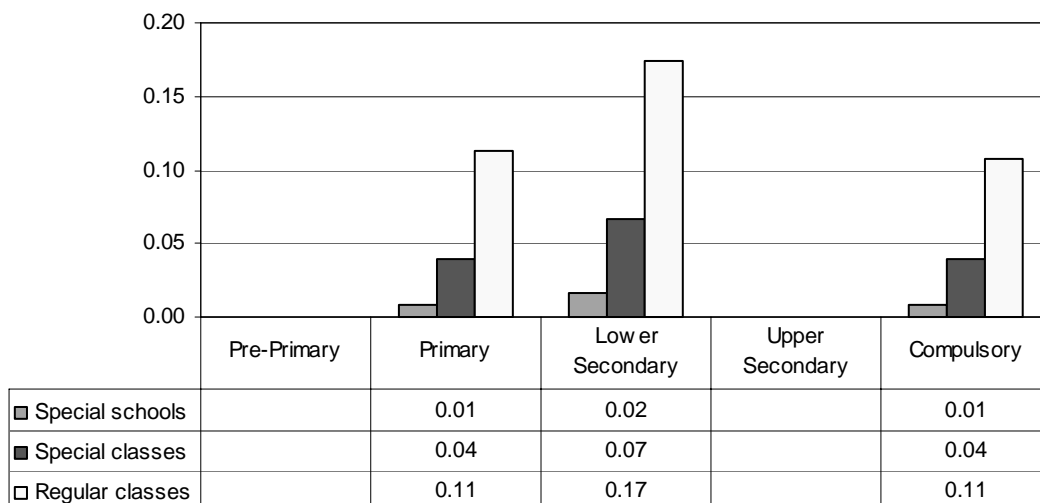
Total – Category 4. Total percentage of students with emotional disturbances falling within the resources definition



Note: Pre-primary education data are missing.
Upper secondary education data are included in lower secondary data.

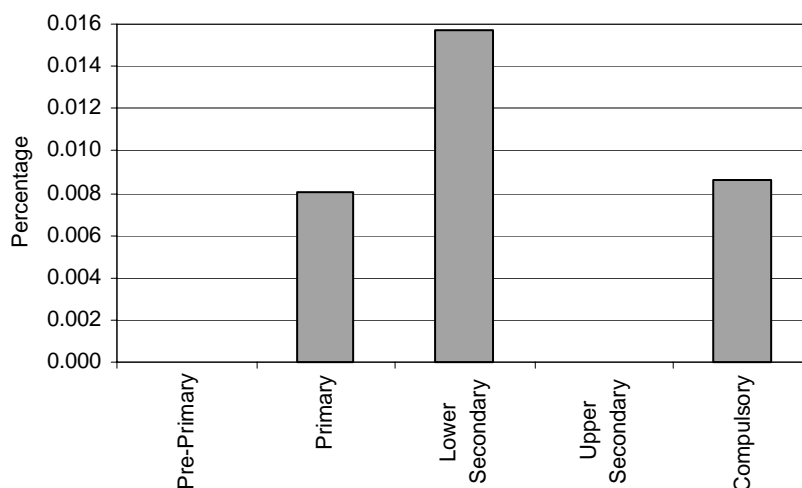
Category 5 Cross-national Category A – “Orthopaedic impairment” means a severe orthopaedic impairment that adversely affects a child’s educational performance. The term includes impairments caused by congenital anomaly (e.g. clubfoot, absence of some member, etc.), impairments caused by disease (e.g. poliomyelitis, bone tuberculosis, etc.), and impairments from other causes (e.g. cerebral palsy, amputations, and fractures or burns that cause contractures). (34 Code of Federal Regulations §300.7.)

Proportion of students with orthopedic impairments by phases of education in special schools, special classes and regular classes



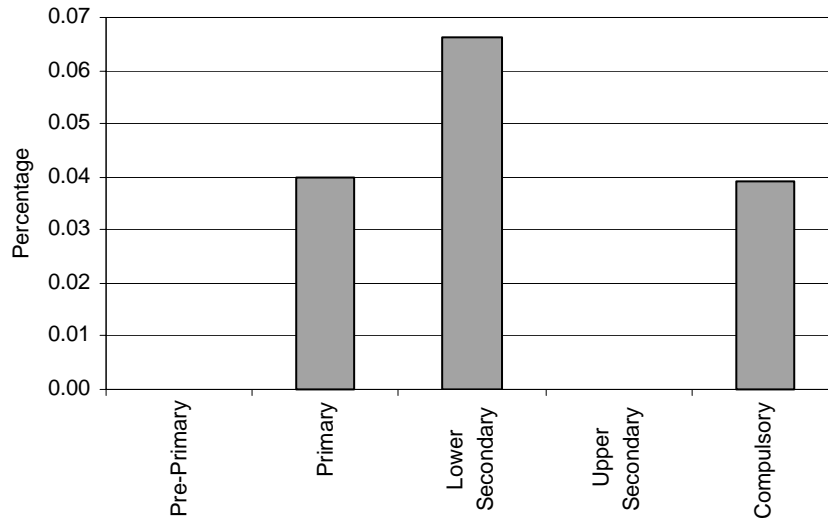
Note: Pre-primary education data are missing.
Upper secondary education data are included in lower secondary data.

Special Schools – Category 5. Total percentage of students with orthopedic impairments falling within the resources definition, by phase of education



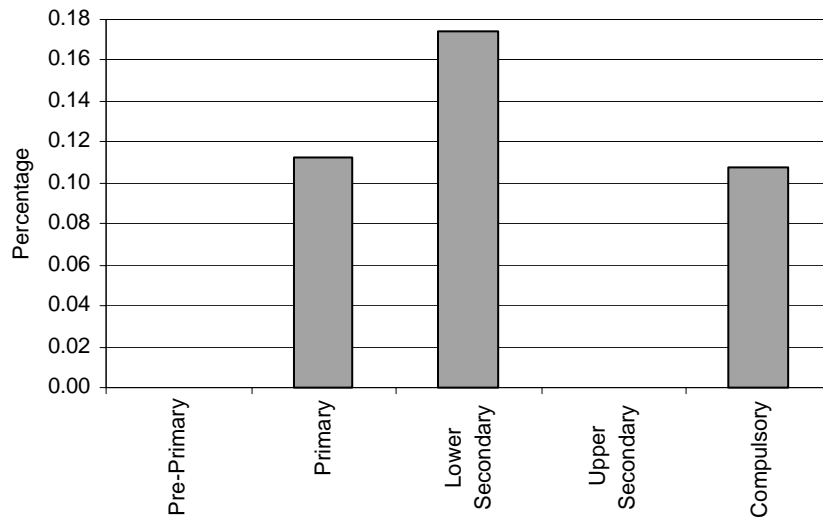
Note: Pre-primary education data are missing.
Upper secondary education data are included in lower secondary data.

Special Classes – Category 5. Total percentage of students with orthopedic impairments falling within the resources definition, by phase of education



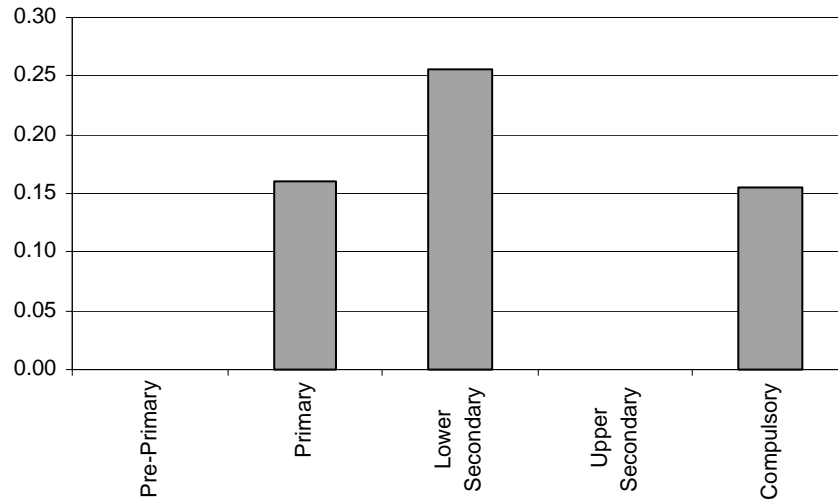
Note: Pre-primary education data are missing.
Upper secondary education data are included in lower secondary data.

Regular Classes – Category 5. Total percentage of students with orthopedic impairments falling within the resources definition, by phase of education



Note: Pre-primary education data are missing.
Upper secondary education data are included in lower secondary data.

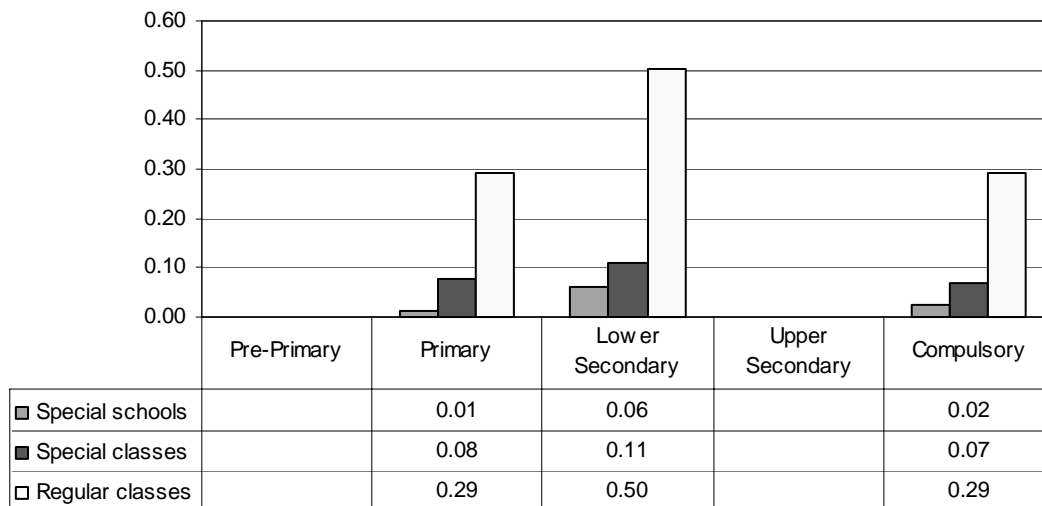
Total – Category 5. Total percentage of students with orthopedic impairments falling within the resources definition



Note: Pre-primary education data are missing.
Upper secondary education data are included in lower secondary data.

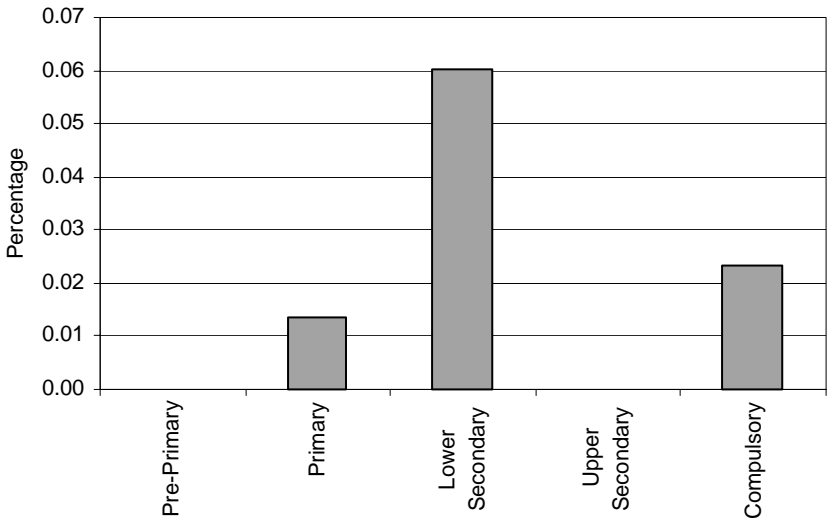
Category 6 Cross-national Category A – “Other health impairment” means having limited strength, vitality or alertness, due to chronic or acute health problems such as a heart condition, tuberculosis, rheumatic fever, nephritis, asthma, sickle cell anaemia, haemophilia, epilepsy, lead poisoning, leukaemia, or diabetes that adversely affects a child's educational performance. (34 Code of Federal Regulations §300.7.)

Proportion of students with other health impairments by phases of education in special schools, special classes and regular classes



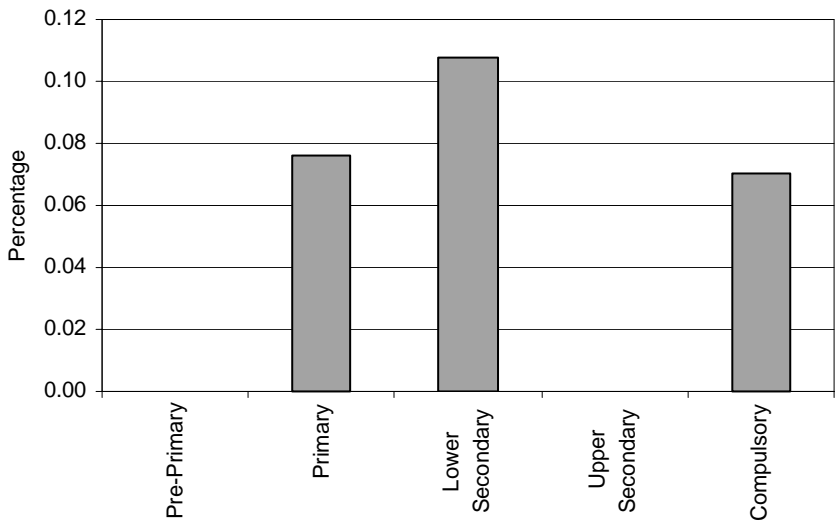
Note: Pre-primary education data are missing.
Upper secondary education data are included in lower secondary data.

Special Schools – Category 6. Total percentage of students with other health impairments falling within the resources definition, by phase of education



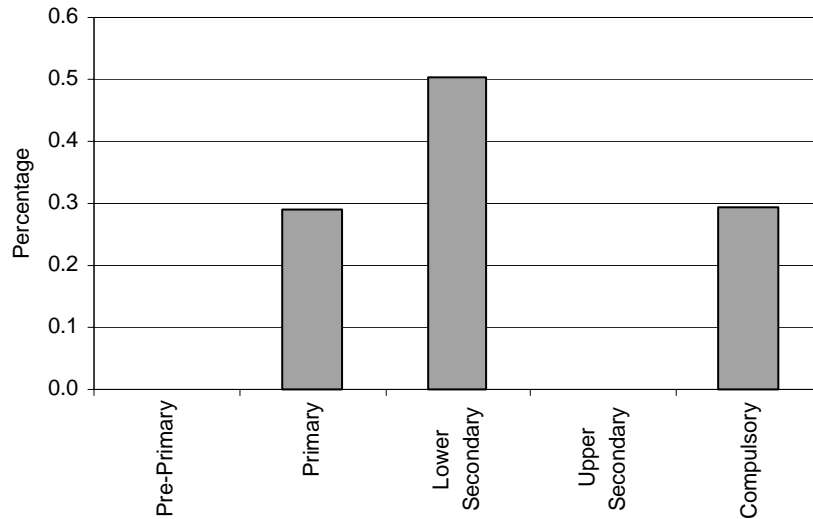
Note: Pre-primary education data are missing.
Upper secondary education data are included in lower secondary data.

Special Classes – Category 6. Total percentage of students with other health impairments falling within the resources definition, by phase of education



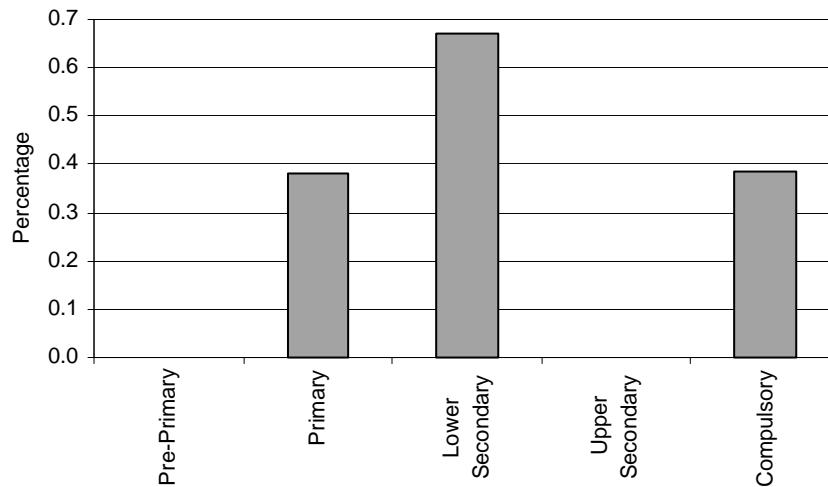
Note: Pre-primary education data are missing.
Upper secondary education data are included in lower secondary data.

Regular Classes – Category 6. Total percentage of students with other health impairments falling within the resources definition, by phase of education



Note: Pre-primary education data are missing.
Upper secondary education data are included in lower secondary data.

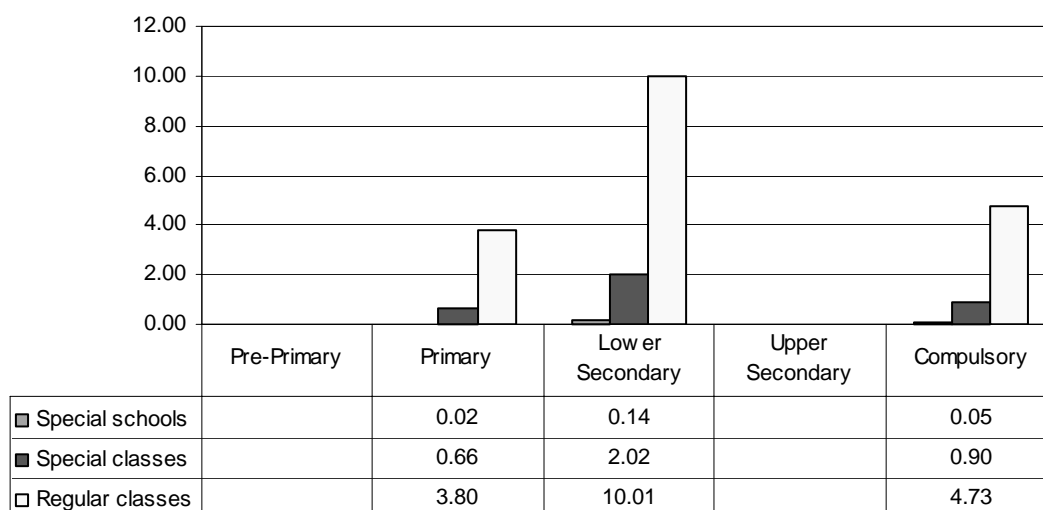
Total – Category 6. Total percentage of students with other health impairments falling within the resources definition



Note: Pre-primary education data are missing.
Upper secondary education data are included in lower secondary data.

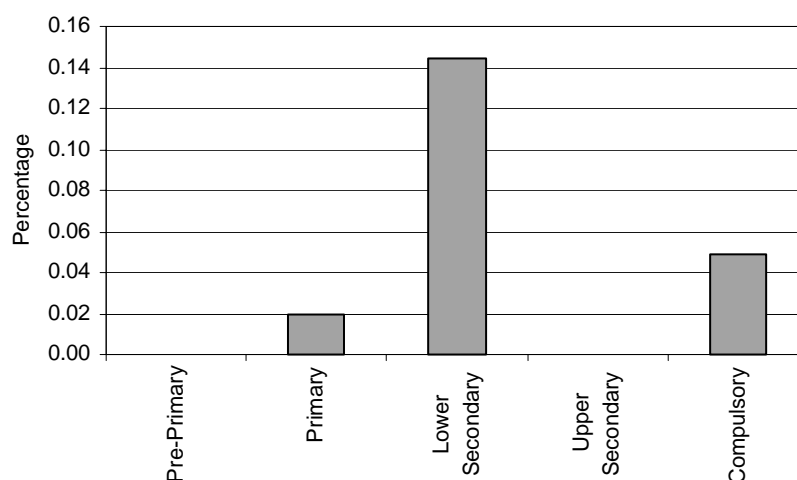
Category 7 Cross-national Category B – “Specific learning disability” means a disorder in one or more of the basic psychological processes involved in understanding or in using language, spoken or written, that may manifest itself in an imperfect ability to listen, think, speak, read, write, spell, or to do mathematical calculations. The term includes such conditions as perceptual disabilities, brain injury, minimal brain dysfunction, dyslexia, and developmental aphasia. The term does not apply to children who have learning problems that are primarily the result of visual, hearing, or motor disabilities, of mental retardation, of emotional disturbance, or of environmental, cultural, or economic disadvantage. (34 Code of Federal Regulations §300.7.)

Proportion of students with specific learning disabilities by phases of education in special schools, special classes and regular classes



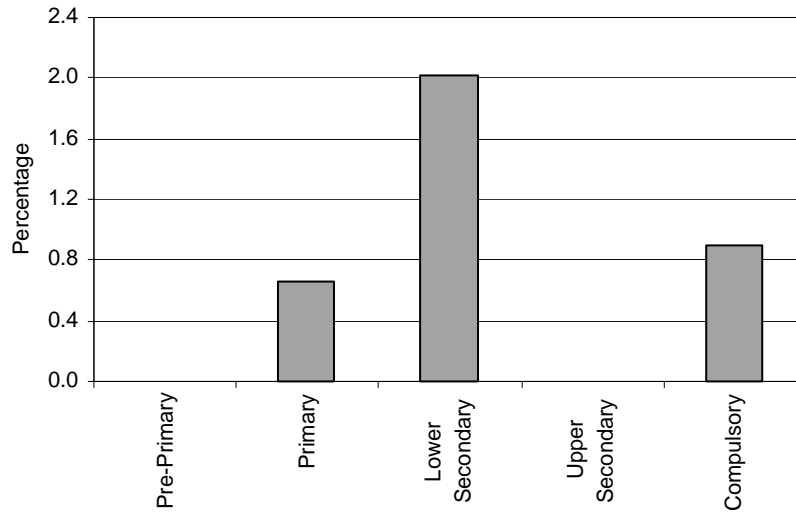
Note: Pre-primary education data are missing.
Upper secondary education data are included in lower secondary data.

Special Schools – Category 7. Total percentage of students with specific learning disabilities falling within the resources definition, by phase of education



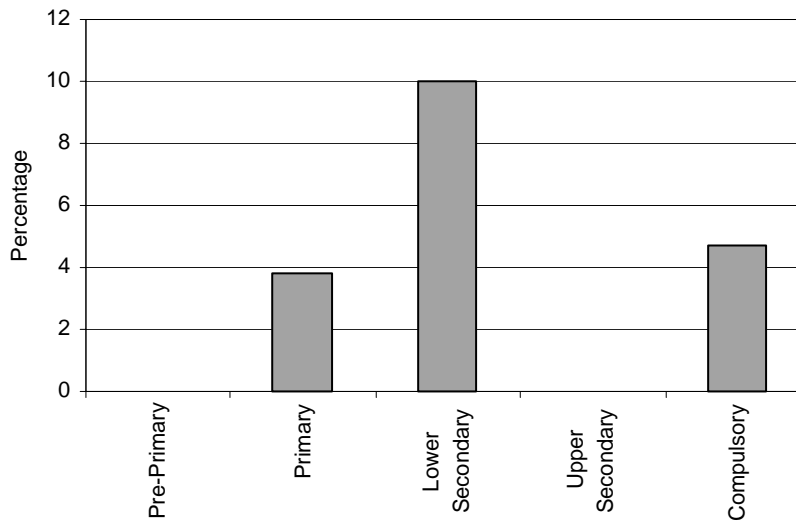
Note: Pre-primary education data are missing.
Upper secondary education data are included in lower secondary data.

Special Classes – Category 7. Total percentage of students with specific learning disabilities falling within the resources definition, by phase of education



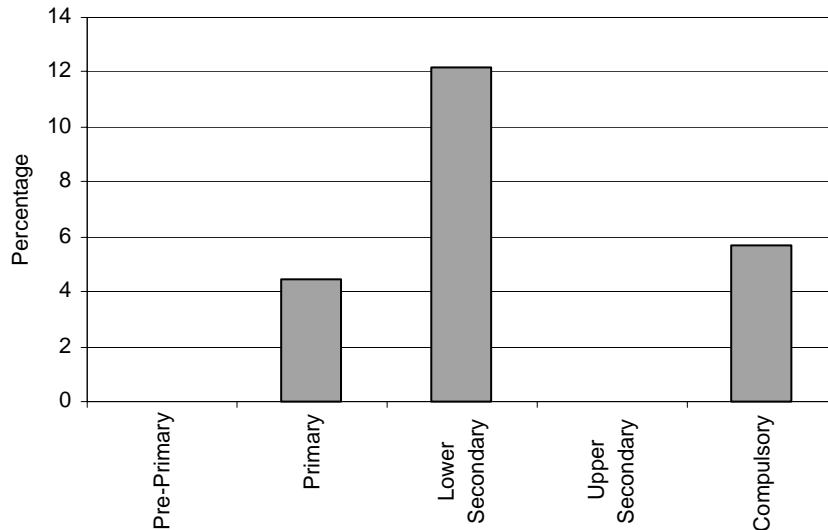
Note: Pre-primary education data are missing.
Upper secondary education data are included in lower secondary data.

Regular Classes – Category 7. Total percentage of students with specific learning disabilities falling within the resources definition, by phase of education



Note: Pre-primary education data are missing.
Upper secondary education data are included in lower secondary data.

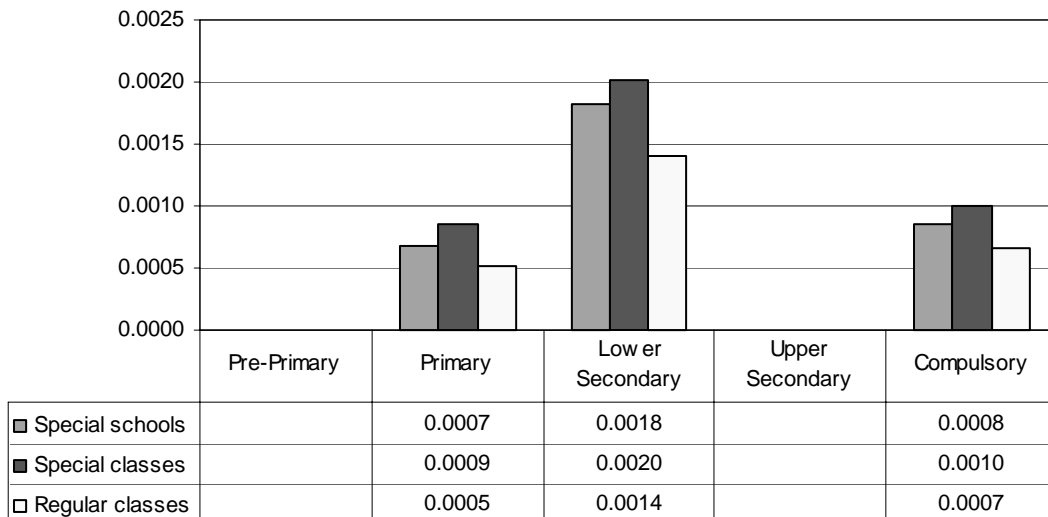
Total – Category 7. Total percentage of students with specific learning disabilities falling within the resources definition



Note: Pre-primary education data are missing.
Upper secondary education data are included in lower secondary data.

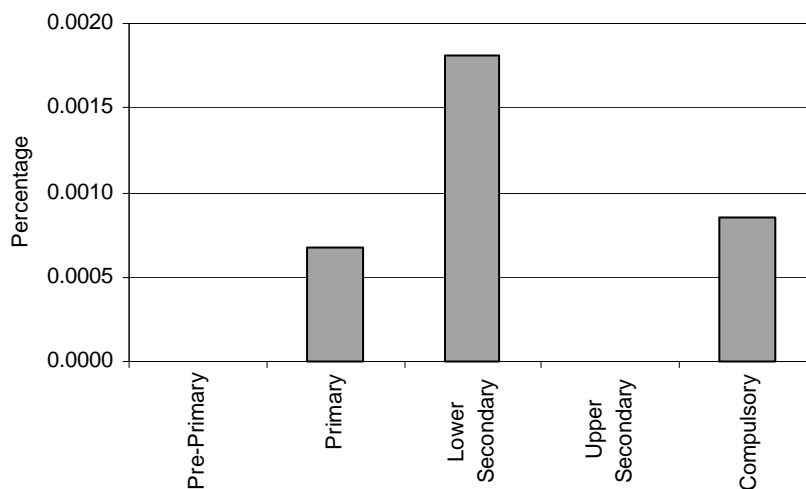
Category 8 Cross-national Category A – “Deaf-Blindness” means concomitant hearing and visual impairments, the combination of which causes such severe communication and other developmental and educational problems that they cannot be accommodated in special education programs solely for children with deafness or children with blindness. (34 Code of Federal Regulations §300.7.)

Proportion of students who are deaf or blind by phases of education in special schools, special classes and regular classes



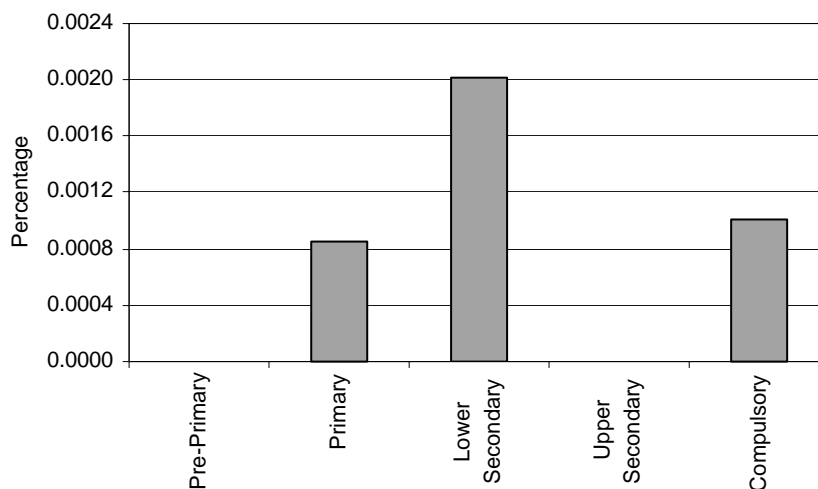
Note: Pre-primary education data are missing.
Upper secondary education data are included in lower secondary data.

Special Schools – Category 8. Total percentage of students who are deaf or blind falling within the resources definition, by phase of education



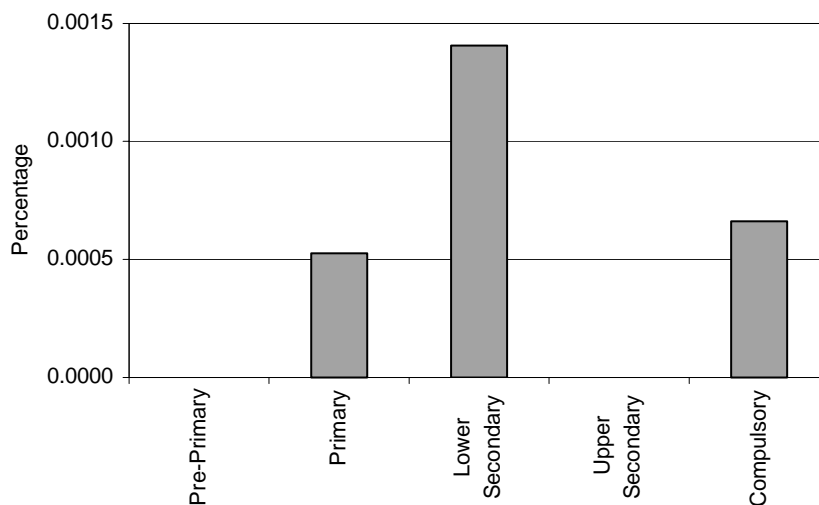
Note: Pre-primary education data are missing.
Upper secondary education data are included in lower secondary data.

Special Classes – Category 8. Total percentage of students who are deaf or blind falling within the resources definition, by phase of education



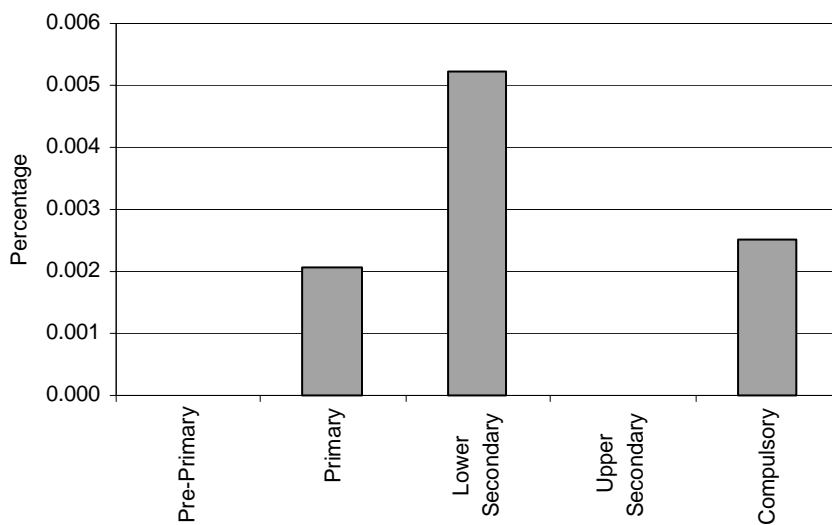
Note: Pre-primary education data are missing.
Upper secondary education data are included in lower secondary data.

Regular Classes – Category 8. Total percentage of students who are deaf or blind falling within the resources definition, by phase of education



Note: Pre-primary education data are missing.
Upper secondary education data are included in lower secondary data.

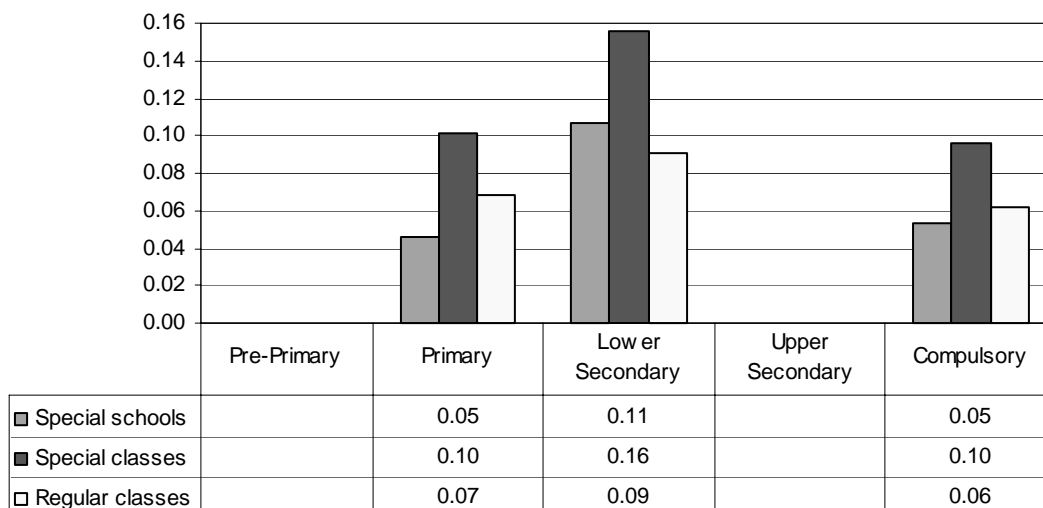
Total – Category 8. Total percentage of students who are deaf or blind falling within the resources definition



Note: Pre-primary education data are missing.
Upper secondary education data are included in lower secondary data.

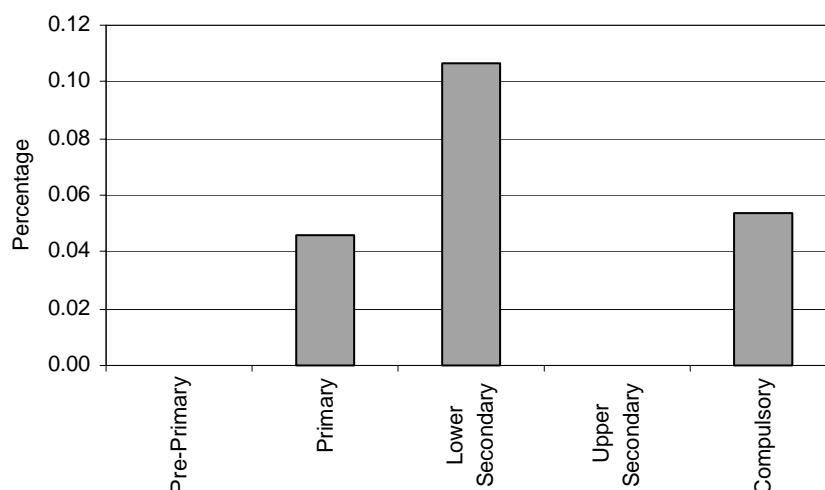
Category 9 Cross-national Category A – “Multiple disabilities” means concomitant impairments (such as mental retardation-blindness, mental retardation-orthopaedic impairment, etc.), the combination of which causes such severe educational problems that they cannot be accommodated in special education programmes solely for one of the impairments. The term does not include deaf-blindness. (34 Code of Federal Regulations §300.7.)

Proportion of students with multiple disabilities by phases of education in special schools, special classes and regular classes



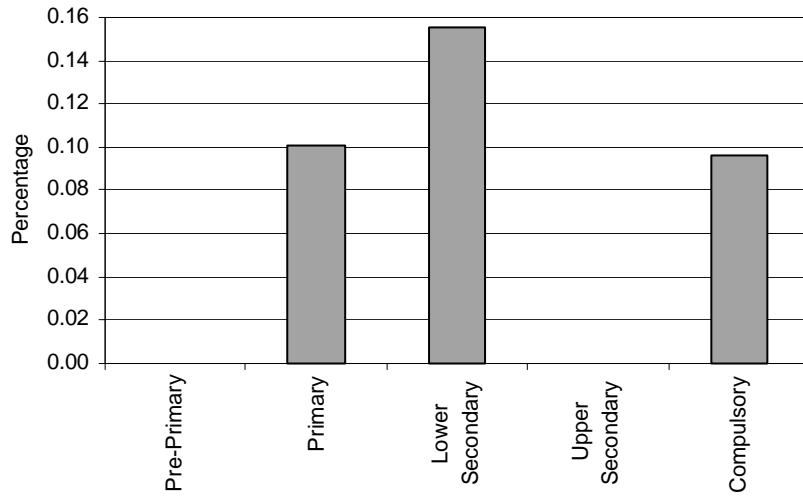
Note: Pre-primary education data are missing.
Upper secondary education data are included in lower secondary data.

Special Schools – Category 9. Total percentage of students with multiple disabilities falling within the resources definition, by phase of education



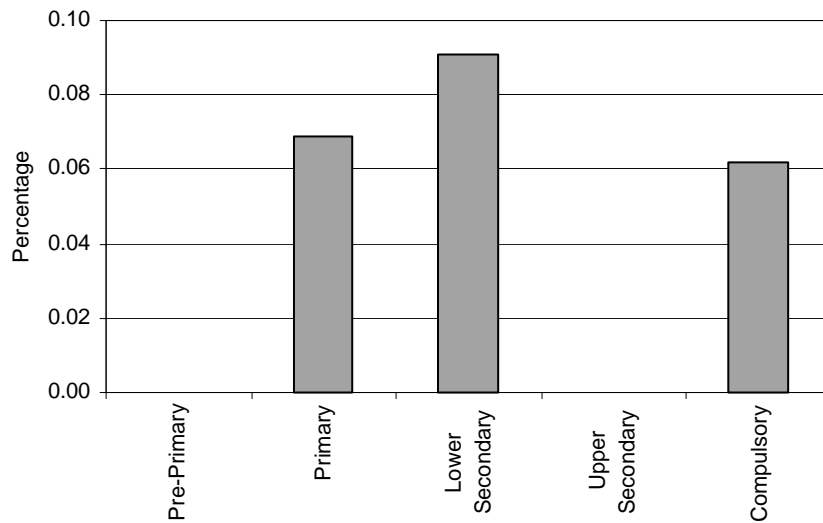
Note: Pre-primary education data are missing.
Upper secondary education data are included in lower secondary data.

Special Classes – Category 9. Total percentage of students with multiple disabilities falling within the resources definition, by phase of education



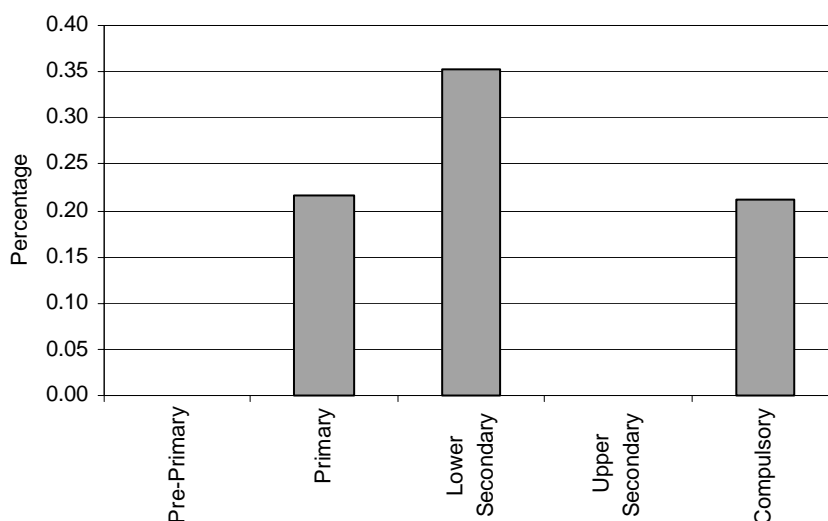
Note: Pre-primary education data are missing.
Upper secondary education data are included in lower secondary data.

Regular Classes – Category 9. Total percentage of students with multiple disabilities falling within the resources definition, by phase of education



Note: Pre-primary education data are missing.
Upper secondary education data are included in lower secondary data.

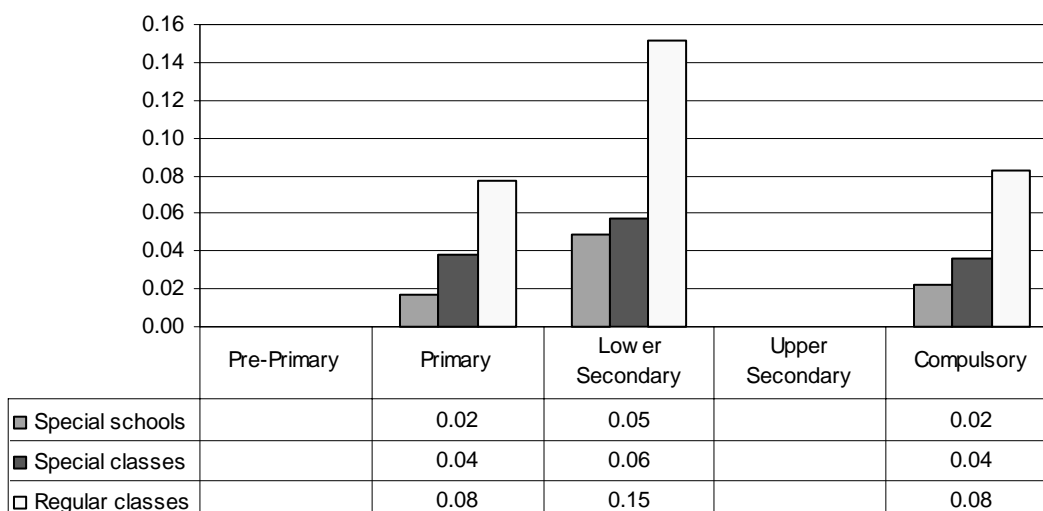
Total – Category 9. Total percentage of students with multiple disabilities falling within the resources definition



Note: Pre-primary education data are missing.
Upper secondary education data are included in lower secondary data.

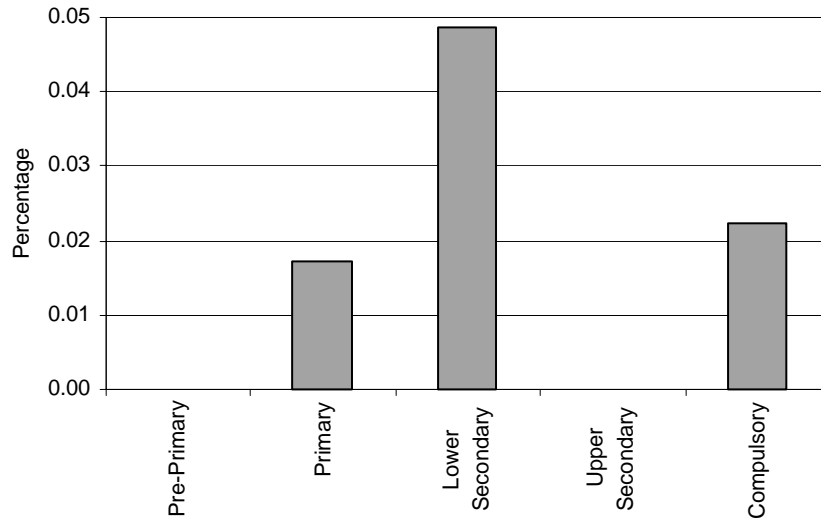
Category 10 Cross-national Category A – “Hearing Impairment” includes deafness and hard of hearing. “Deafness” means a hearing impairment that is so severe that the child is impaired in processing linguistic information through hearing, with or without amplification, that adversely affects a child's educational performance. “Hard of hearing” means impairment in hearing, whether permanent or fluctuating, that adversely affects a child's educational performance but that is not included under the definition of deafness in this section. (34 Code of Federal Regulations §300.7.)

Proportion of students with hearing impairments by phases of education in special schools, special classes and regular classes



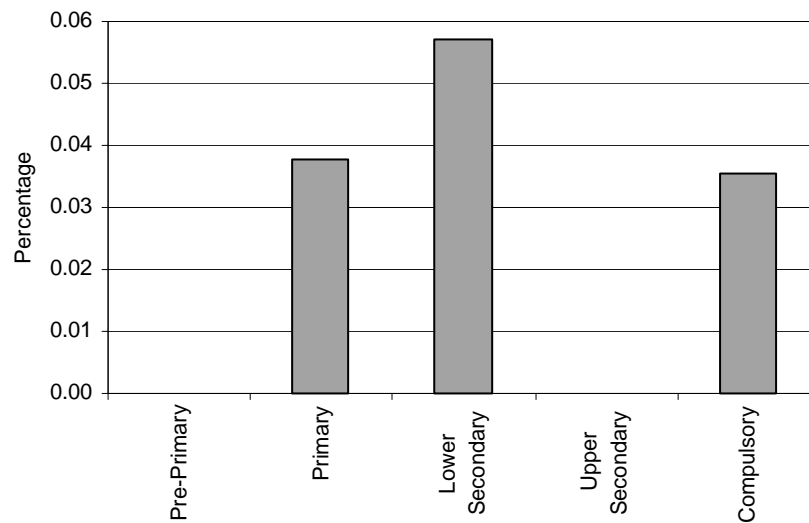
Note: Pre-primary education data are missing.
Upper secondary education data are included in lower secondary data.

Special Schools – Category 10. Total percentage of students with hearing impairments falling within the resources definition, by phase of education



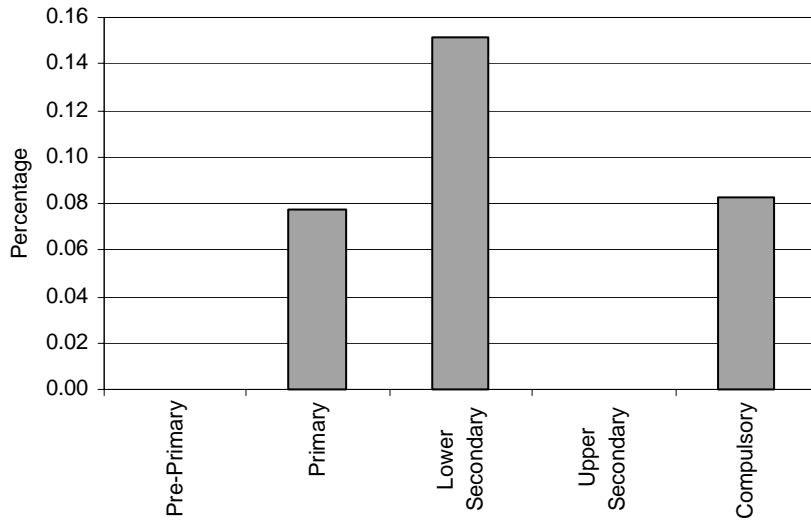
Note: Pre-primary education data are missing.
Upper secondary education data are included in lower secondary data.

Special Classes – Category 10. Total percentage of students with hearing impairments falling within the resources definition, by phase of education



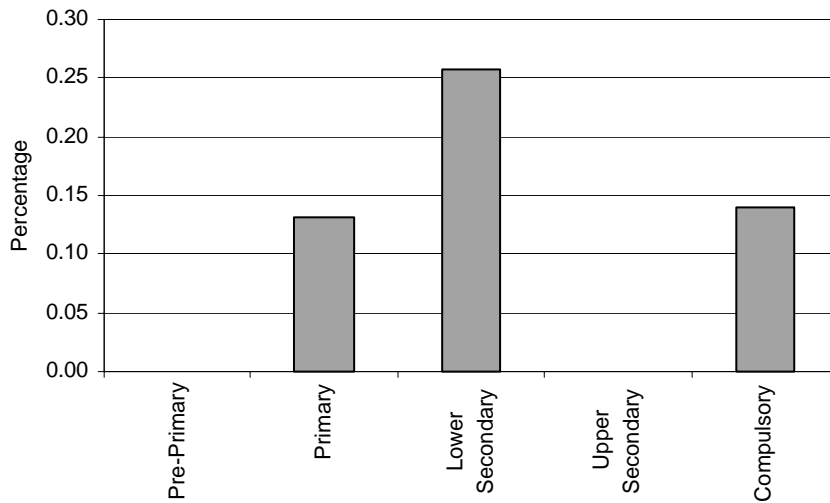
Note: Pre-primary education data are missing.
Upper secondary education data are included in lower secondary data.

Regular Classes – Category 10. Total percentage of students with hearing impairments falling within the resources definition, by phase of education



Note: Pre-primary education data are missing.
Upper secondary education data are included in lower secondary data.

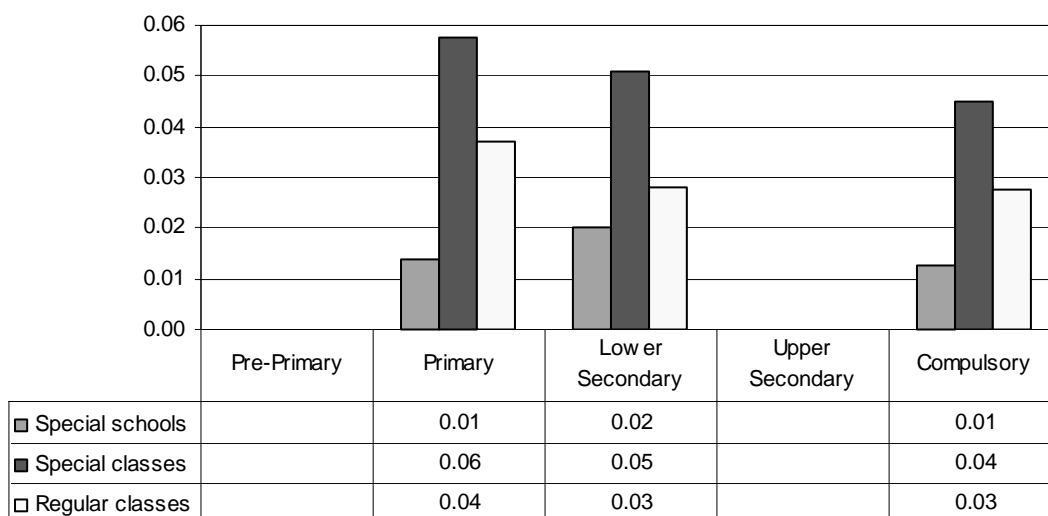
Total – Category 10. Total percentage of students with hearing impairments falling within the resources definition



Note: Pre-primary education data are missing.
Upper secondary education data are included in lower secondary data.

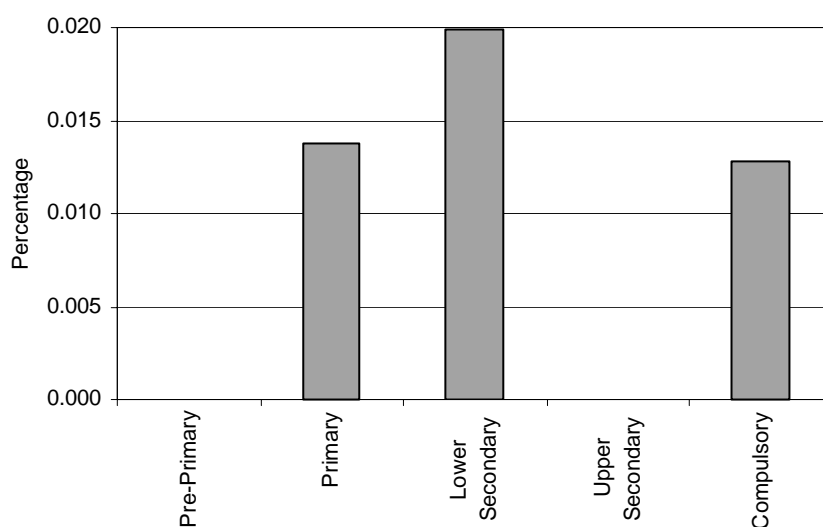
Category 11 Cross-national Category A – “Autism” means a developmental disability significantly affecting verbal and non-verbal communication and social interaction, generally evident before age 3, that adversely affects a child's educational performance. Other characteristics often associated with autism are engagement in repetitive activities and stereotyped movements, resistance to environmental change or change in daily routines, and unusual responses to sensory experiences. The term does not apply if a child's educational performance is adversely affected primarily because the child has a serious emotional disturbance, as defined in paragraph (b)(9) of this section. (34 Code of Federal Regulations §300.7.)

Proportion of students with autism by phases of education in special schools, special classes and regular classes



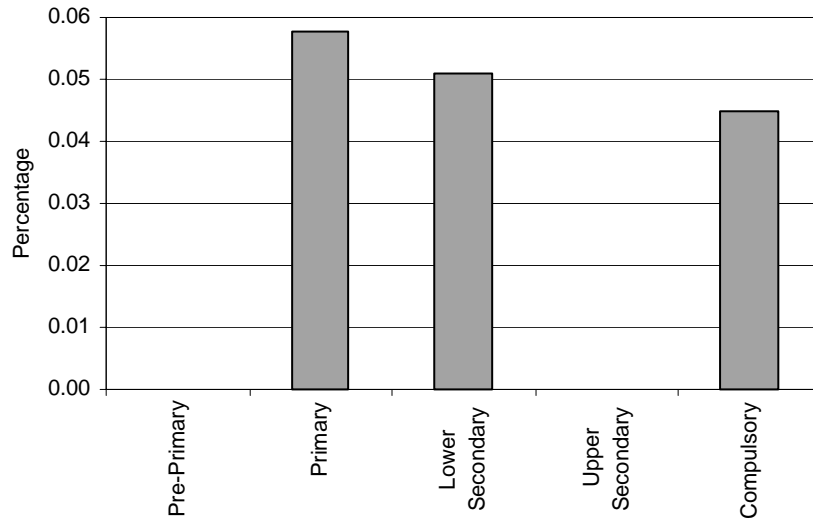
Note: Pre-primary education data are missing.
Upper secondary education data are included in lower secondary data.

Special Schools – Category 11. Total percentage of students with autism falling within the resources definition, by phase of education



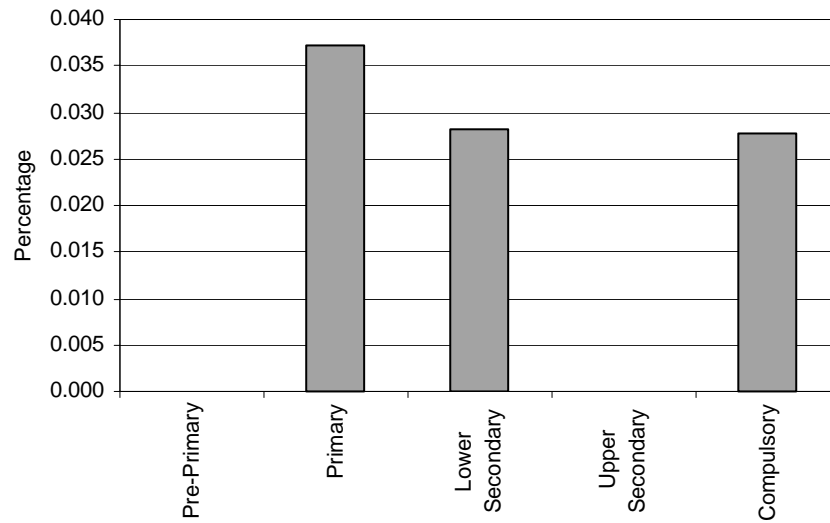
Note: Pre-primary education data are missing.
Upper secondary education data are included in lower secondary data.

Special Classes – Category 11. Total percentage of students with autism falling within the resources definition, by phase of education



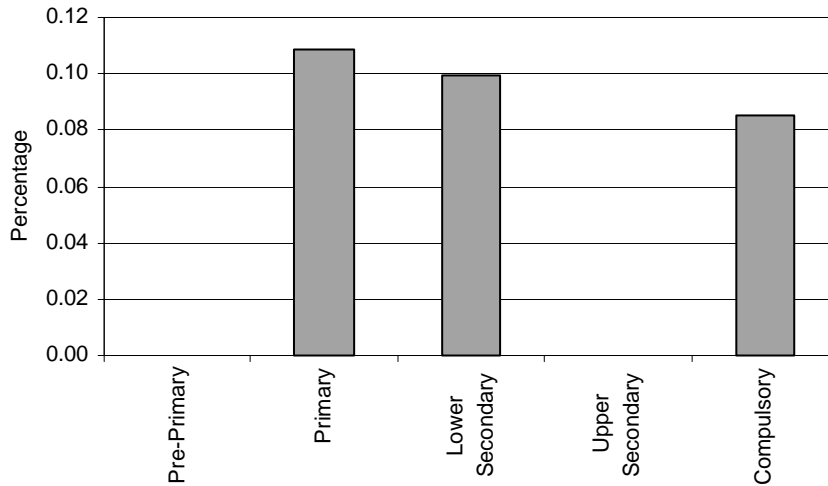
Note: Pre-primary education data are missing.
Upper secondary education data are included in lower secondary data.

Regular Classes – Category 11. Total percentage of students with autism falling within the resources definition, by phase of education



Note: Pre-primary education data are missing.
Upper secondary education data are included in lower secondary data.

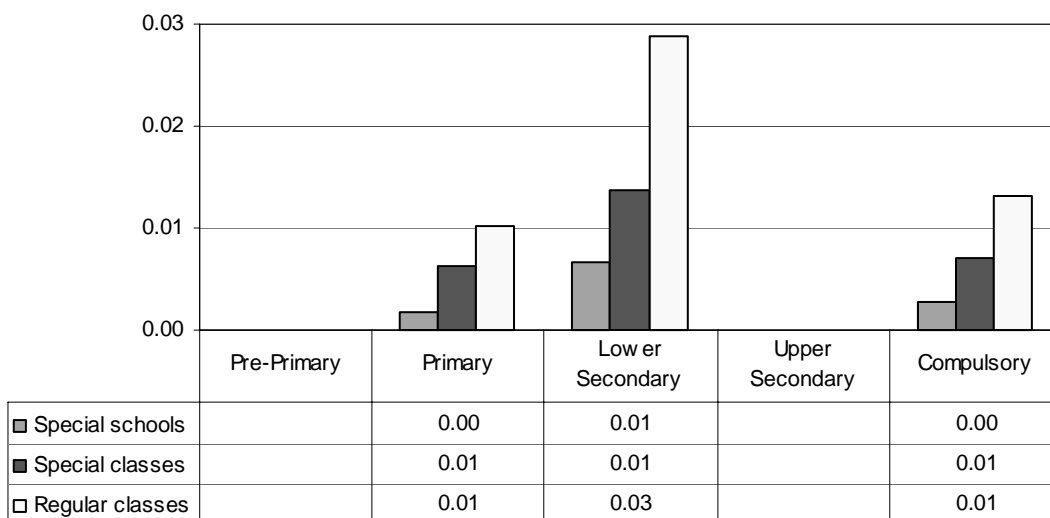
Total – Category 11. Total percentage of students with autism falling within the resources definition



Note: Pre-primary education data are missing.
Upper secondary education data are included in lower secondary data.

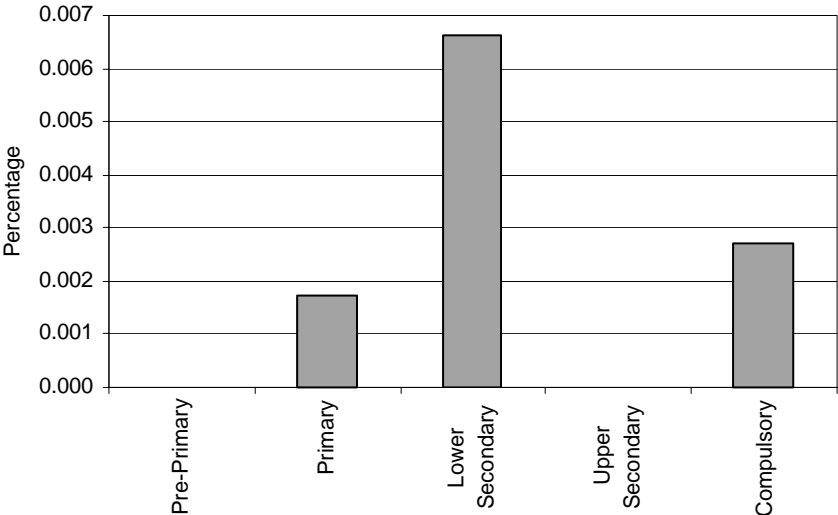
Category 12 Cross-national Category A – “Traumatic brain injury” means an acquired injury to the brain caused by an external physical force, resulting in total or partial functional disability or psychosocial impairment, or both, that adversely affects a child’s educational performance. The term applies to open or closed head injuries resulting in impairments in one or more areas, such as cognition; language; memory; attention; reasoning; abstract thinking; judgement; problem-solving; sensory; perceptual and motor abilities; psychosocial behaviour; physical functions; information processing; and speech. The term does not apply to brain injuries that are congenital or degenerative, or brain injuries induced by birth trauma. (34 Code of Federal Regulations §300.7.)

Proportion of students with traumatic brain injury by phases of education in special schools, special classes and regular classes



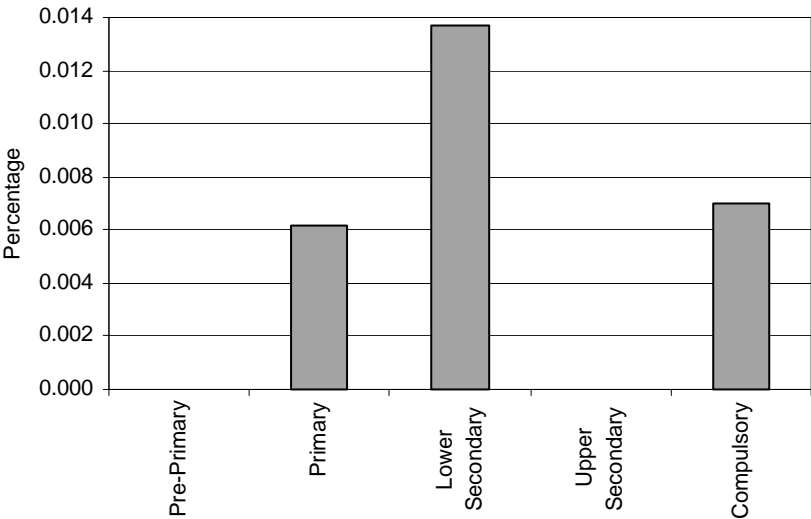
Note: Pre-primary education data are missing.
Upper secondary education data are included in lower secondary data.

Special Schools – Category 12. Total percentage of students with traumatic brain injury falling within the resources definition, by phase of education



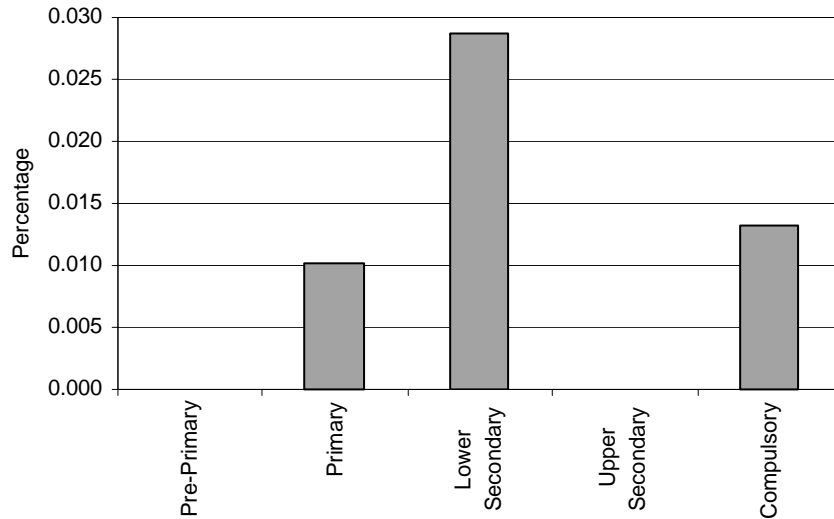
Note: Pre-primary education data are missing.
Upper secondary education data are included in lower secondary data.

Special Classes – Category 12. Total percentage of students with traumatic brain injury falling within the resources definition, by phase of education



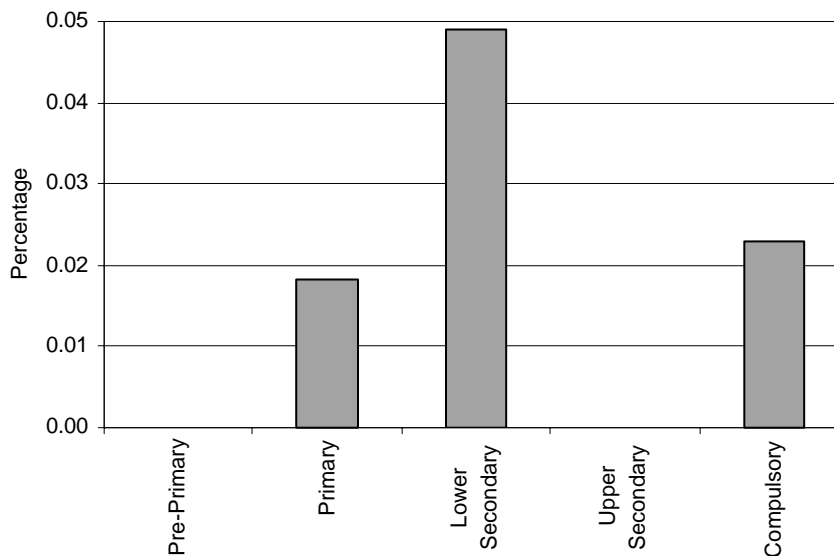
Note: Pre-primary education data are missing.
Upper secondary education data are included in lower secondary data.

Regular Classes – Category 12. Total percentage of students with traumatic brain injury falling within the resources definition, by phase of education



Note: Pre-primary education data are missing.
Upper secondary education data are included in lower secondary data.

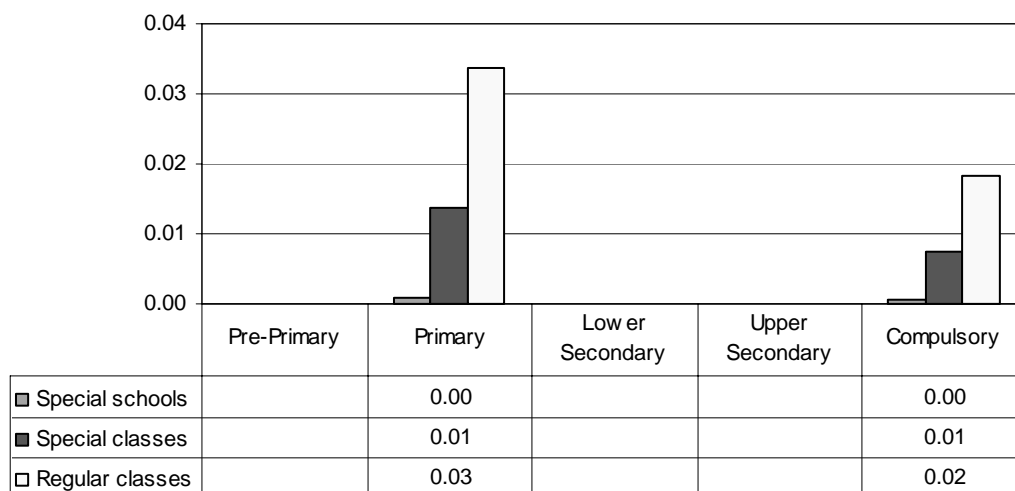
Total – Category 12. Total percentage of students with traumatic brain injury falling within the resources definition



Note: Pre-primary education data are missing.
Upper secondary education data are included in lower secondary data.

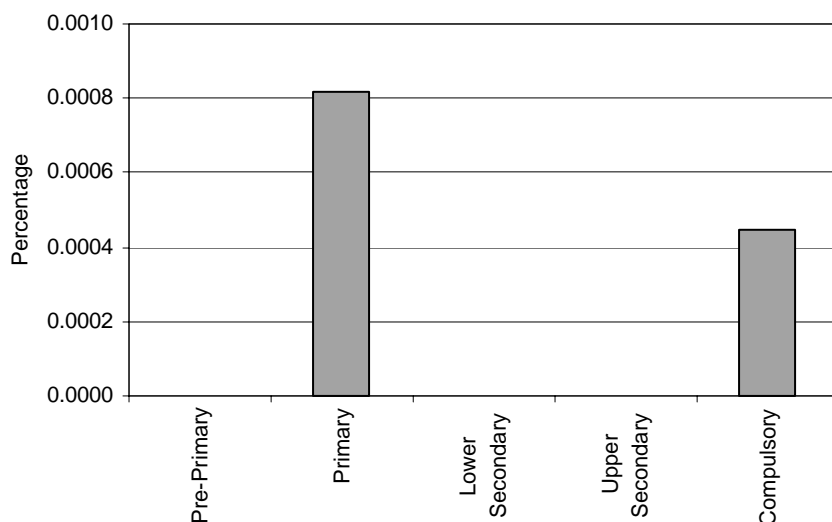
Category 13 Cross-national Category A – “Developmental Delay” means a student “who is experiencing developmental delays, as defined by the State and as measured by appropriate diagnostic instruments and procedures, in one or more of the following areas: physical development, cognitive development, communication development, social or emotional development, or adaptive development and who, by reason thereof, needs special education and related services”. (34 Code of Federal Regulations §300.7(b)(1)(2), 300.313(b).)

Proportion of students with development delay by phases of education in special schools, special classes and regular classes



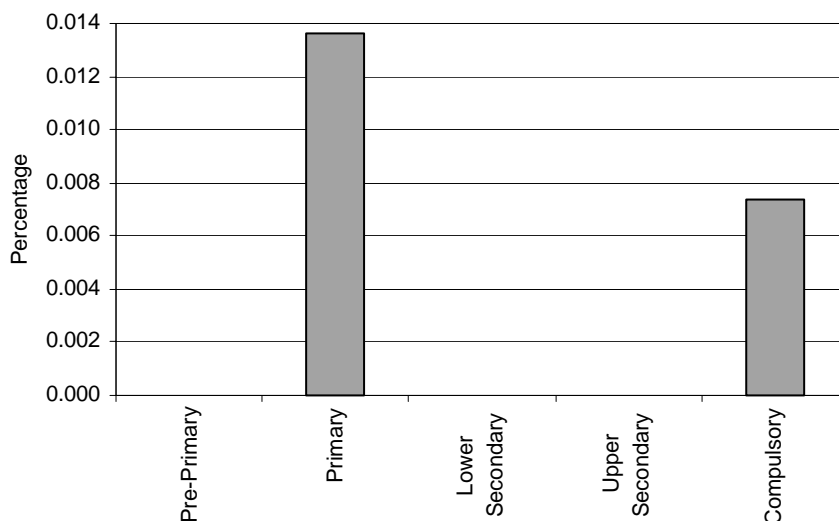
Note: Pre-primary education data are missing.
Lower secondary and upper secondary education data are not applicable.

Special Schools – Category 13. Total percentage of students with developmental delay falling within the resources definition, by phase of education



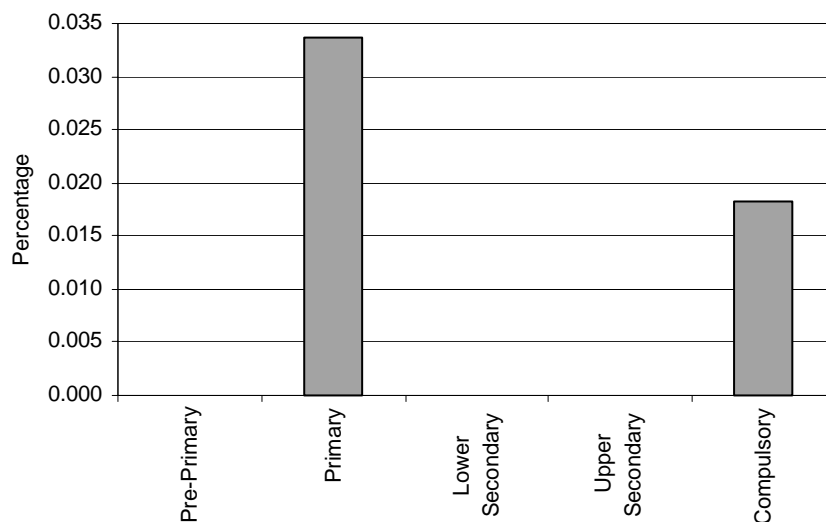
Note: Pre-primary education data are missing.
Lower secondary and upper secondary education data are not applicable.

Special Classes – Category 13. Total of students with developmental delay falling within the resources definition, by phase of education



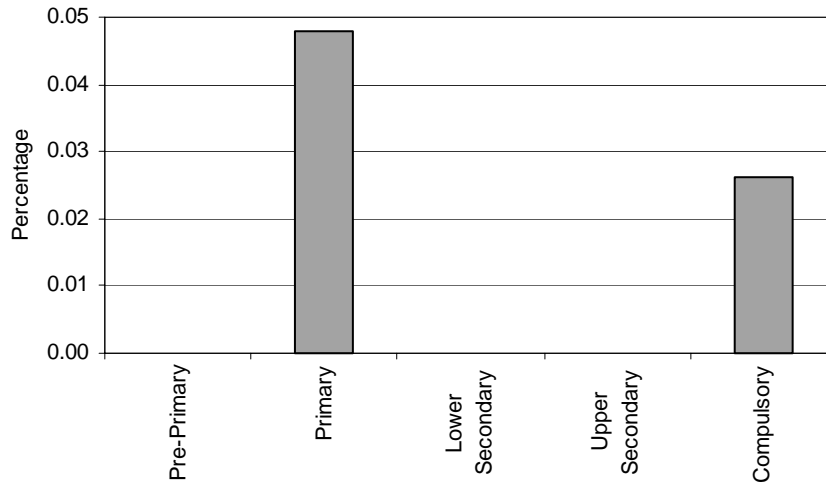
Note: Pre-primary education data are missing.
Lower secondary and upper secondary education data are not applicable.

Regular Classes – Category 13. Total percentage of students with developmental delay falling within the resources definition, by phase of education



Note: Pre-primary education data are missing.
Lower secondary and upper secondary education data are not applicable.

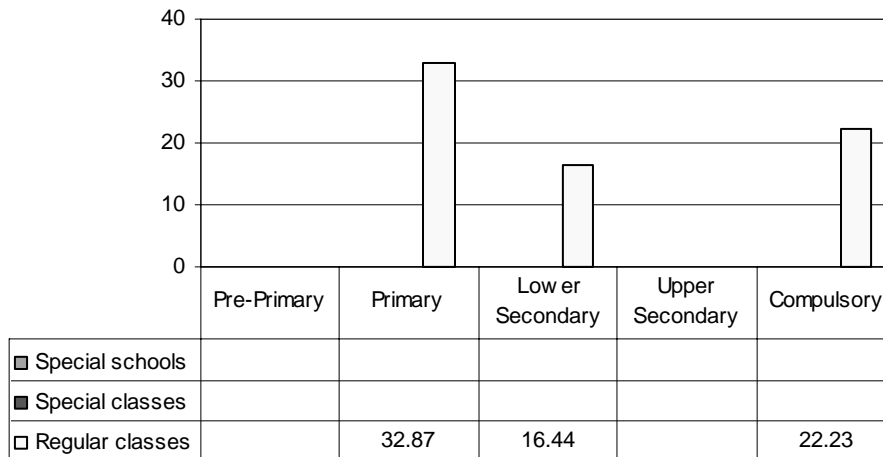
Total – Category 13. Total percentage of students with developmental delay falling within the resources definition



Note: Pre-primary education data are missing.
Lower secondary and upper secondary education data are not applicable.

Category 14 Cross-national Category C. A definition of this category has not been made available.

Proportion of disadvantaged students by phases of education in special schools, special classes and regular classes



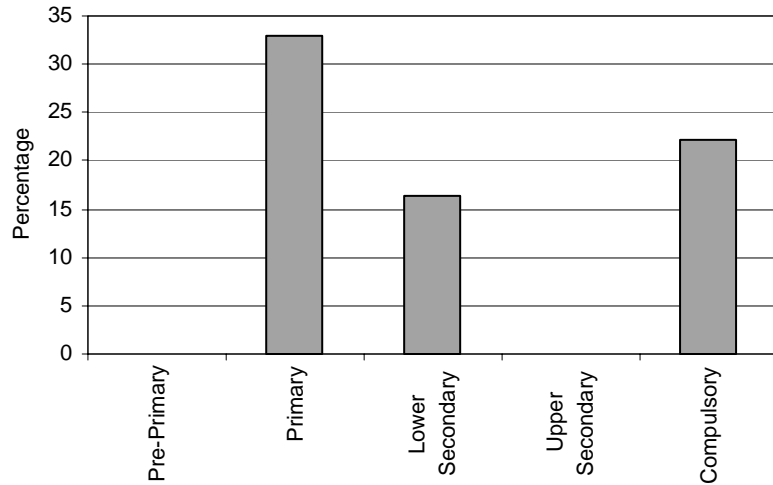
Note: Special schools and special classes data are missing.
Regular classes data in pre-primary and upper secondary education data are missing.

Special Schools – Category 14. Disadvantaged students

MISSING

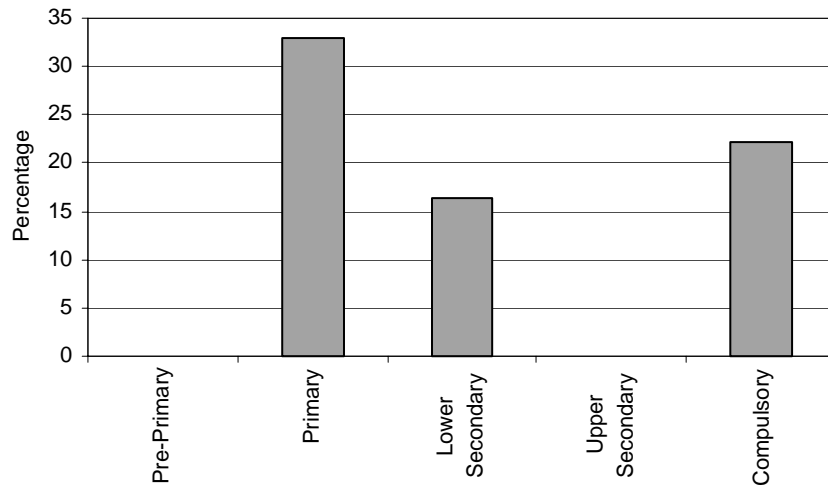
Special Classes – Category 14. Disadvantaged students
MISSING

Regular Classes – Category 14. Total percentage of disadvantaged students falling within the resources definition, by phase of education



Note: Regular classes data in pre-primary and upper secondary education data are missing.

Total – Category 14. Total percentage of disadvantaged students falling within the resources definition



Note: Special schools and special classes data are missing. Regular classes data in pre-primary and upper secondary education data are missing.