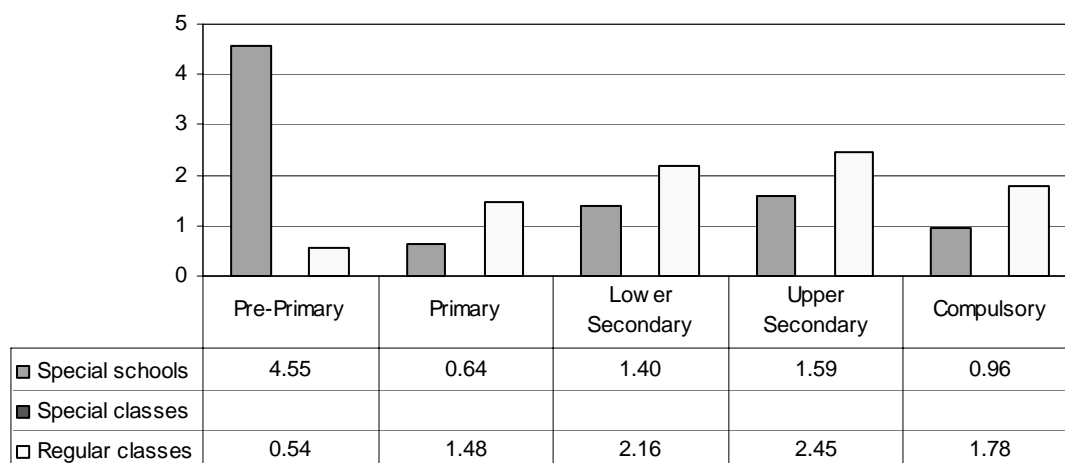


## UNITED KINGDOM

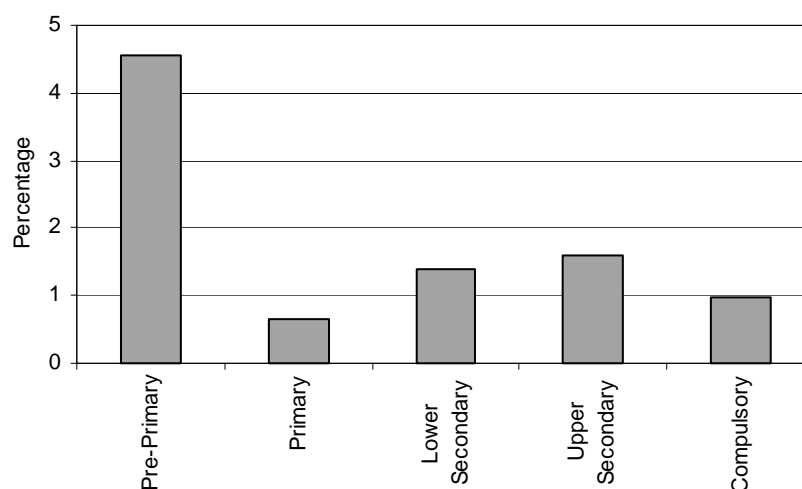
*Category 1 Cross-national Category A* - The statement (record) of special educational needs is a legal document that sets out the child's needs and all the special help he or she should have, which may include money, staff time and special equipment. It also sets out the responsibility for these resources between the school, local authority and others agencies such as health and social services. The statement (record) will also specify the educational placement of the child – whether in mainstream (regular) school, special school or other form of specialist provision. In England, Wales and Northern Ireland, the vast majority of pupils in special schools will have a statement. In Scotland, a smaller proportion of pupils in special schools will have records.

### Proportion of students with statements of SEN by phases of education in special schools, special classes and regular classes



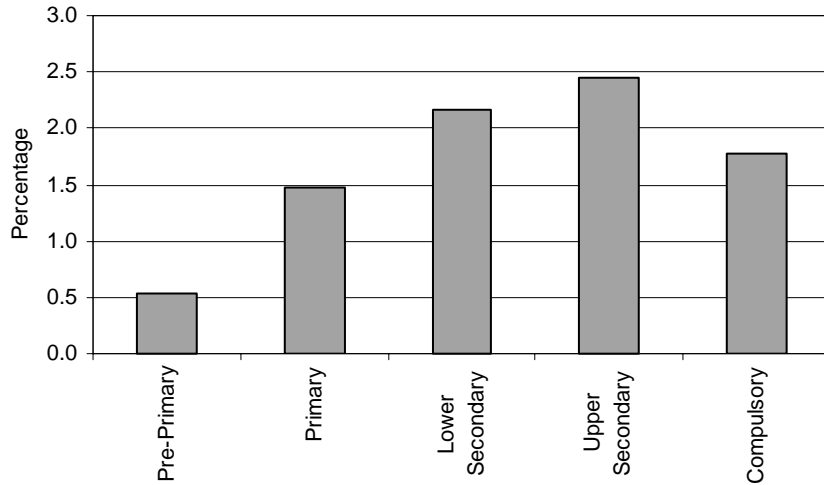
Note: Special classes data is included in regular classes data.

### Special Schools –Category 1. Total percentage of students with statements of SEN falling within the resources definition, by phase of education



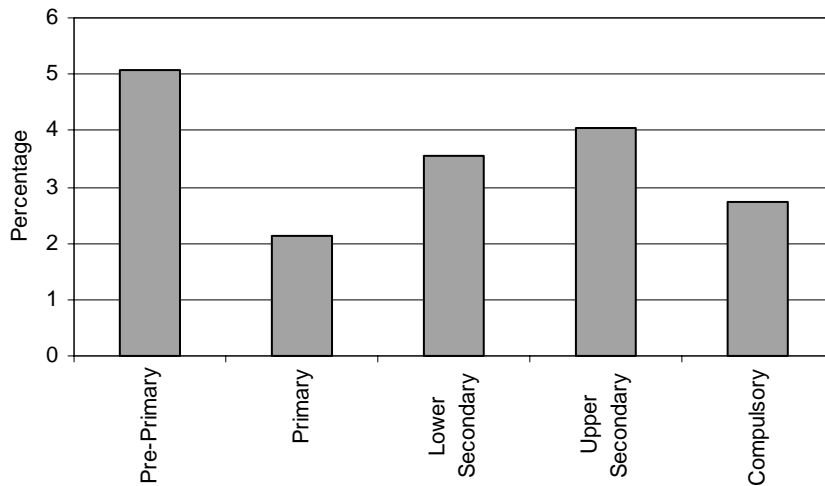
**Special Classes – Category 1. Children with statements of SEN**  
INCLUDED IN REGULAR CLASSES

**Regular Classes – Category 1. Total percentage of students with statements of SEN falling within the resources definition, by phase of education**



Note: Regular classes data also include special classes data.

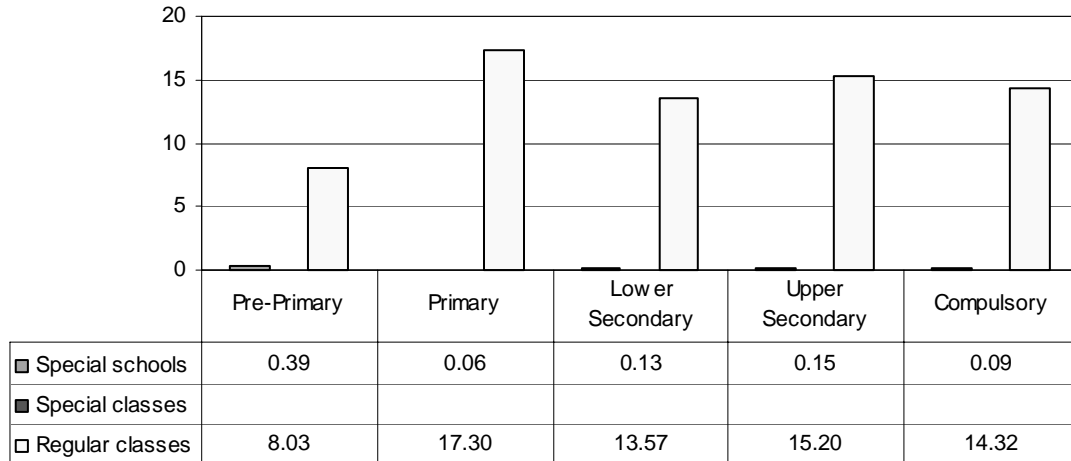
**Total – Category 1. Total percentage of students with statements of SEN falling within the resources definition**



Note: Special classes data is included in regular classes data.

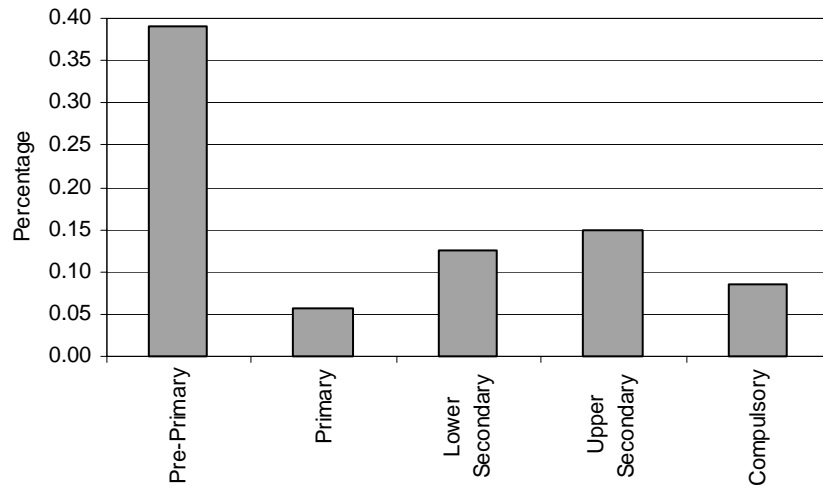
Category 2 Cross-national Category B - No definition is available.

**Proportion of students with SEN without statements by phases of education in special schools, special classes and regular classes**



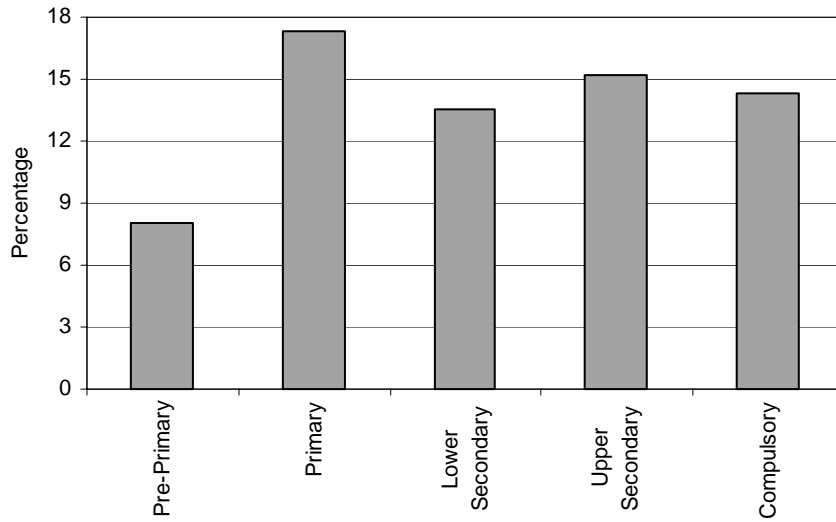
Note: Special classes data is included in regular classes data.

**Special Schools – Category 2. Total percentage of students with SEN without statements falling within the resources definition, by phase of education**



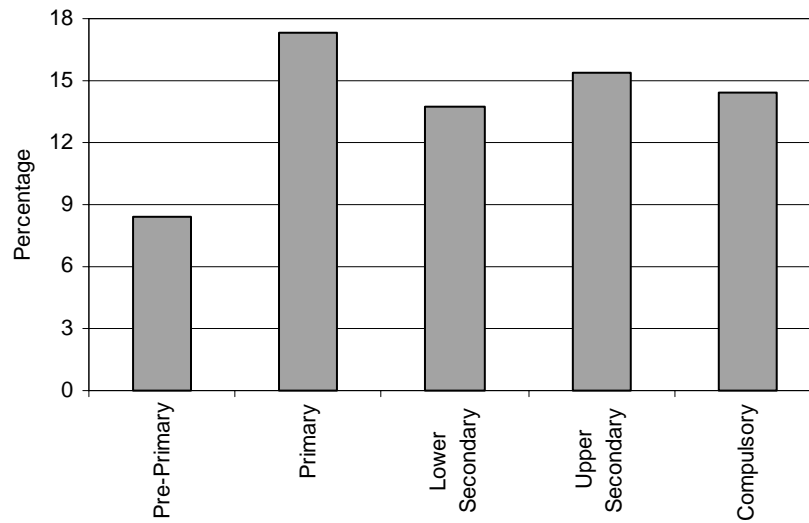
**Special Classes – Category 2. Children with SEN without statements**  
INCLUDED IN REGULAR CLASSES

**Regular Classes – Category 2. Total percentage of students with SEN without statements falling within the resources definitions, by phase of education**



Note: Regular classes data also include special classes data.

**Total – Category 2. Total percentage of students with SEN without statements falling within the resources definition**



Note: Special classes data is included in regular classes data.