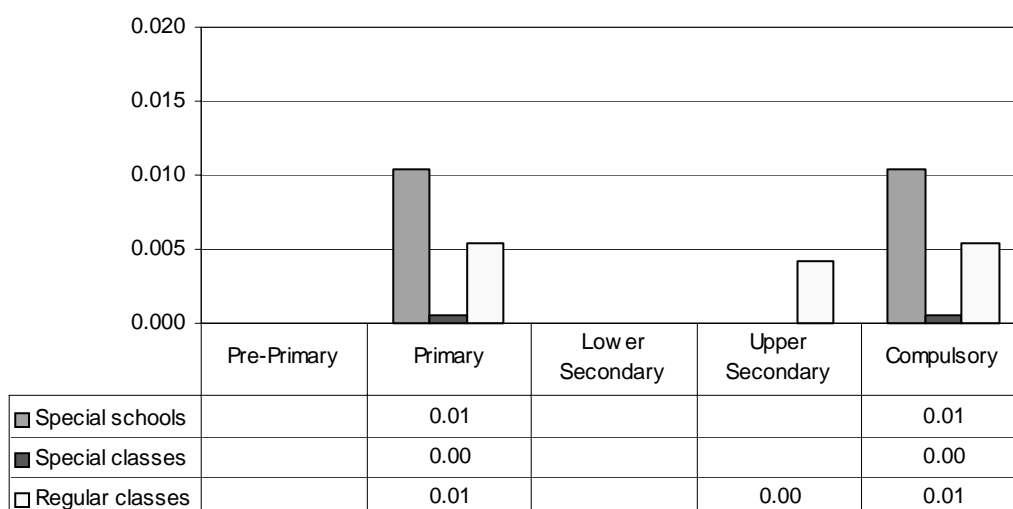


TURKEY

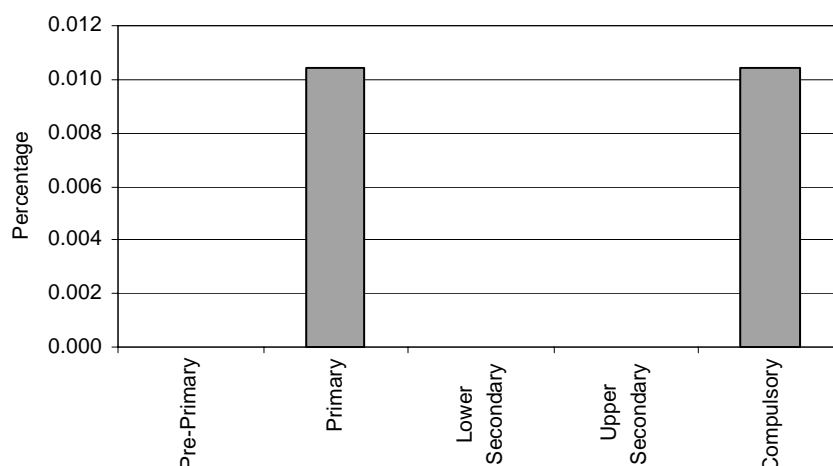
Category 1 Cross-national Category A - BLIND: The ones whose visual acuity, even after all possible correction, is below 1/10 and who are unable to use their power of vision in their education. *LOW VISION:* The ones whose visual acuity, even after all possible correction, is between 1/10 and 3/10 and who are unable to use their vision in their education without the use of special materials and methods.

Proportion of students with visual impairments by phases of education in special schools, special classes and regular classes



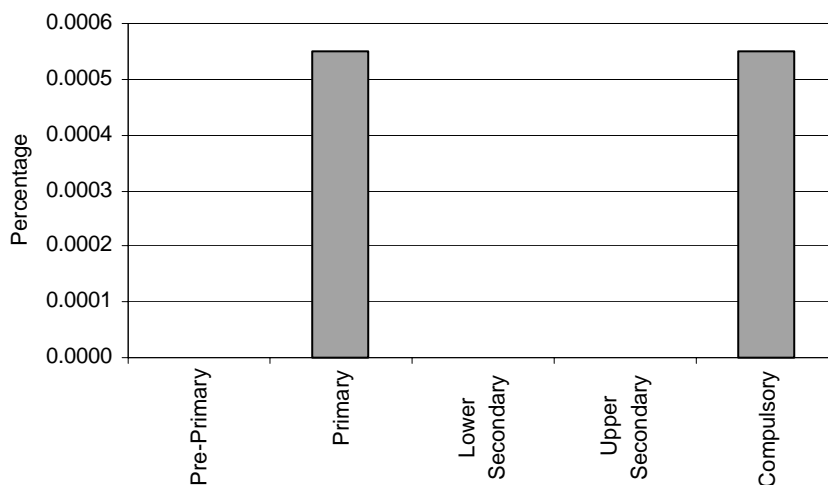
Note: Special schools data in pre-primary and upper secondary education are missing.
 Special schools data in lower secondary education are not applicable.
 Special classes data in pre-primary, lower secondary and upper secondary education are not applicable.
 Regular classes data in pre-primary education are missing.
 Regular classes data in upper secondary education are not applicable.

Special Schools – Category 1. Total percentage of students with visual impairments falling within the resources definition, by phase of education



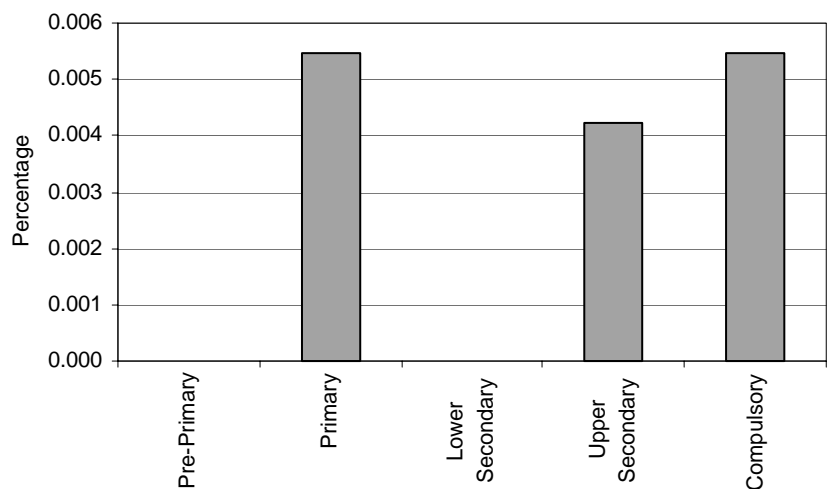
Note: Special schools data in pre-primary and upper secondary education are missing.
 Special schools data in lower secondary education are not applicable.

Special Classes – Category 1. Total percentage of students with visual impairments falling within the resources definition, by phase of education



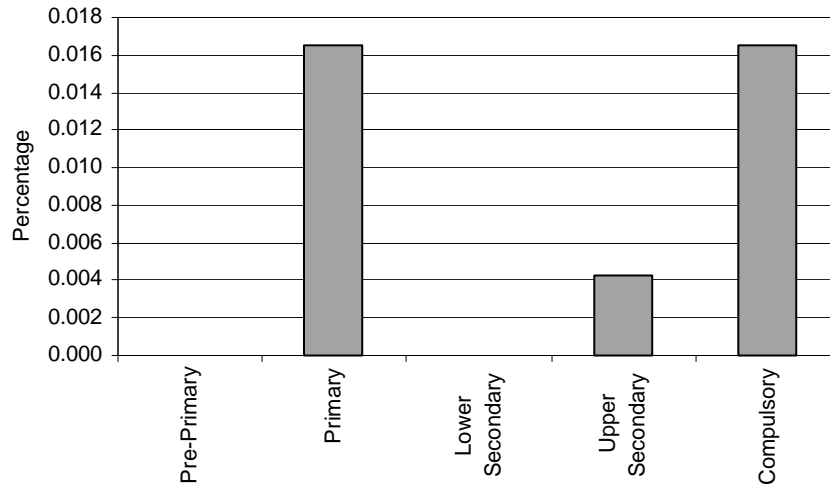
Note: Special classes data in pre-primary, lower secondary and upper secondary education are not applicable.

Regular Classes – Category 1. Total percentage of students with visual impairments falling within the resources definition, by phase of education



Note: Regular classes data in pre-primary education are missing.
Regular classes data in upper secondary education are not applicable.

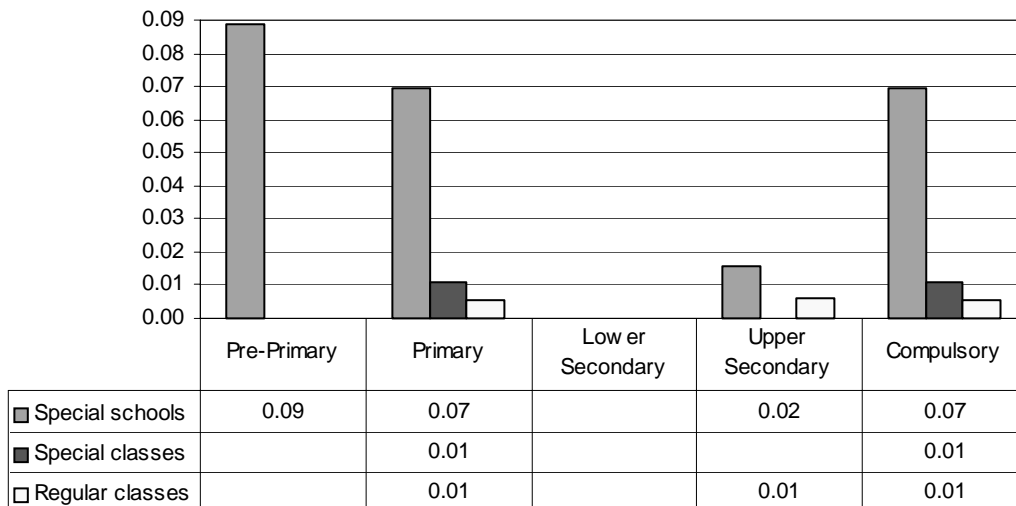
Total – Category 1. Total percentage of students with visual impairments falling within the resources definition



Note: Special schools data in pre-primary and upper secondary education are missing.
 Special schools data in lower secondary education are not applicable.
 Special classes data in pre-primary, lower secondary and upper secondary education are not applicable.
 Regular classes data in pre-primary education are missing.
 Regular classes data in upper secondary education are not applicable.

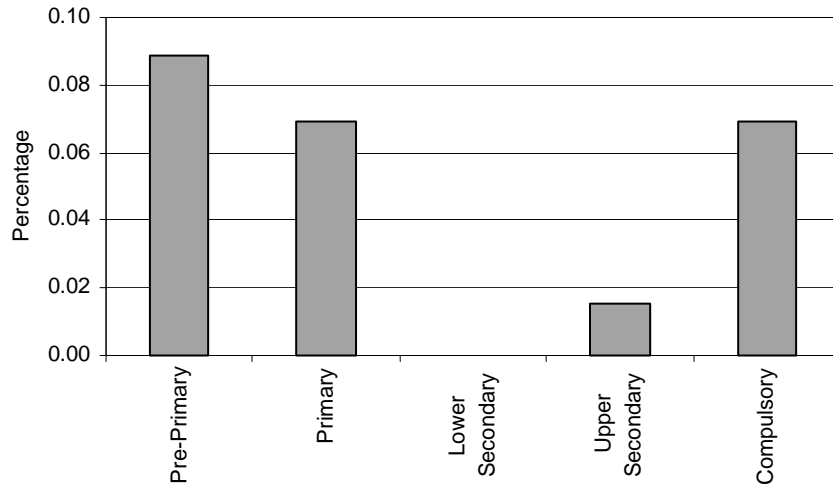
Category 2 Cross-national Category A - DEAF: The ones whose loss of hearing, even after all possible correction, is above 70 decibels and who are unable to use their power of hearing in their education.
HARD OF HEARING: The ones whose loss of hearing, even after all possible correction is between 25-70 decibels and who are only able to use their power of hearing in their education with the use of hearing aids.

Proportion of students with hearing impairments by phases of education in special schools, special classes and regular classes



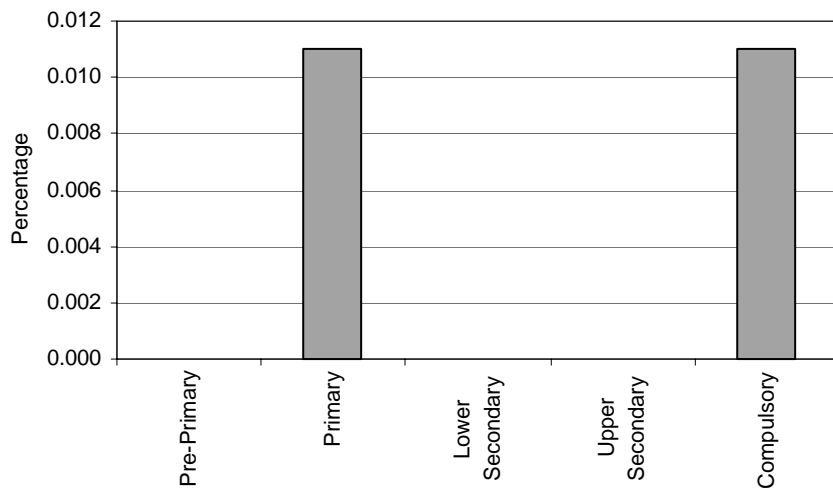
Note: Special schools data in lower secondary education are not applicable.
 Special classes data in pre-primary, lower secondary and upper secondary education are not applicable.
 Regular classes data in pre-primary education are missing.
 Regular classes data in lower secondary education are not applicable.

Special Schools – Category 2. Total percentage of students with hearing impairments falling within the resources definition, by phase of education



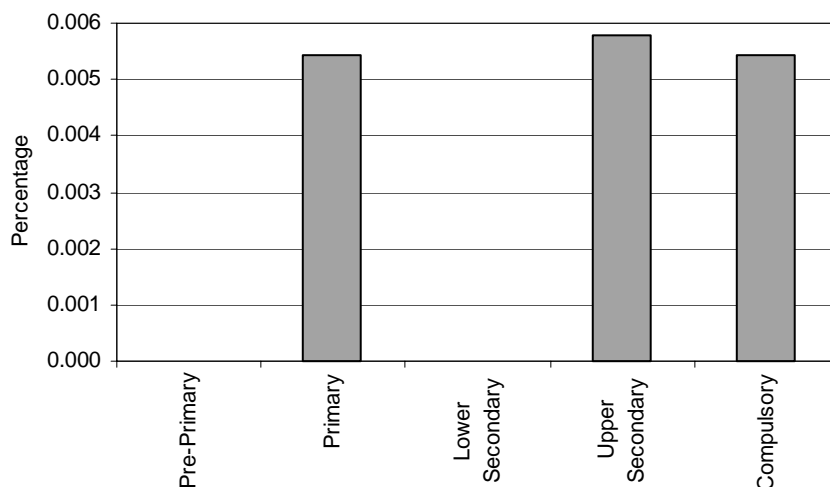
Note: Special schools data in lower secondary education are not applicable.

Special Classes – Category 2. Total percentage of students with hearing impairments falling within the resources definition, by phase of education



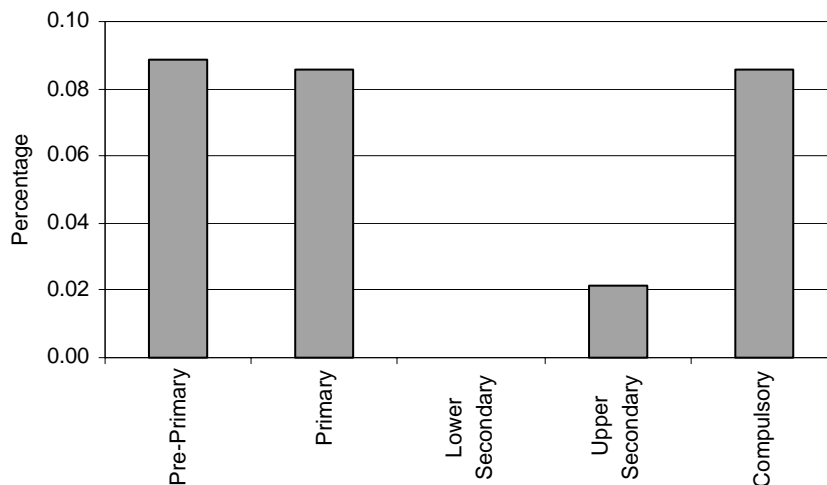
Note: Special classes data in pre-primary, lower secondary and upper secondary education are not applicable.

Regular classes – Category 2. Total percentage of students with hearing impairments falling within the resources definition, by phase of education



Note: Regular classes data in pre-primary education are missing.
Regular classes data in lower secondary education are not applicable.

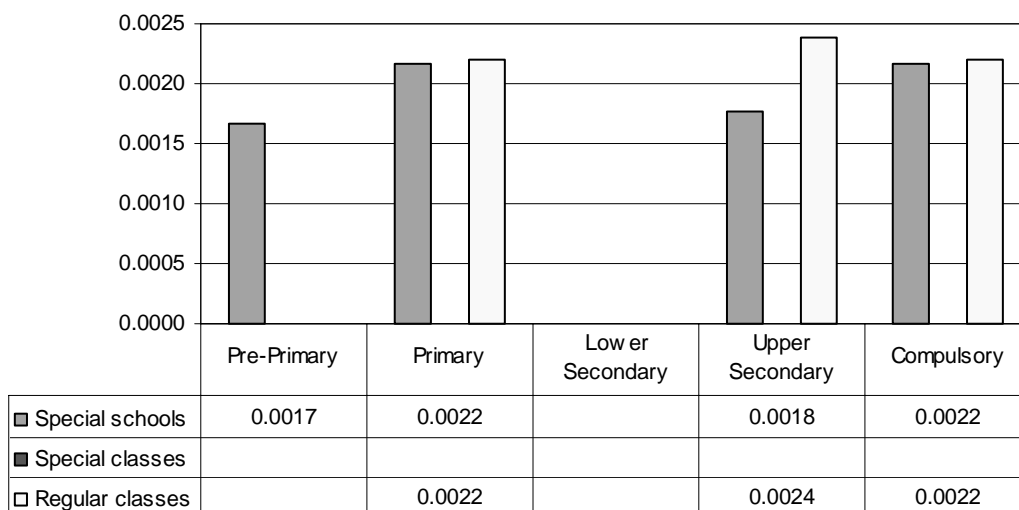
Total – Category 2. Total percentage of students with hearing impairments falling within the resources definition



Note: Special schools data in lower secondary education are not applicable.
Special classes data in pre-primary, lower secondary and upper secondary education are not applicable.
Regular classes data in pre-primary education are missing.
Regular classes data in lower secondary education are not applicable.

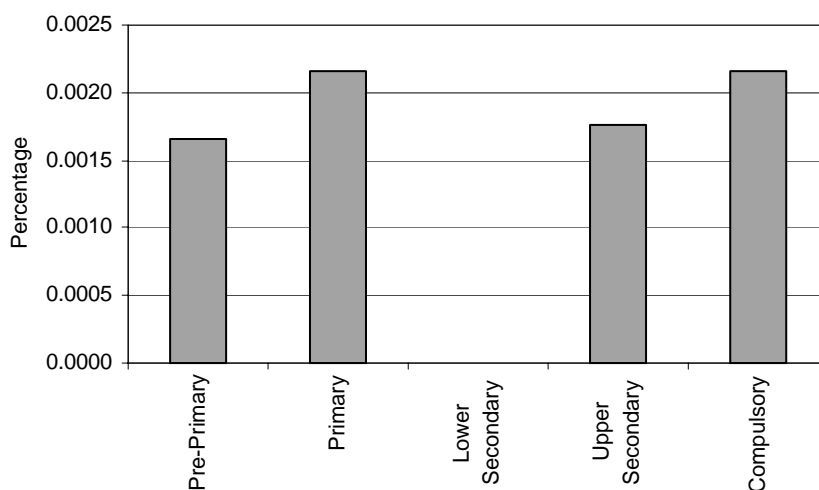
Category 3 Cross-national Category A - The ones who are unable to make use of the educational process satisfactorily because of the defects in their skeleton, nervous system, muscles and joints, even after all possible correction.

Proportion of students who are orthopaedically handicapped by phases of education in special schools, special classes and regular classes



Note: Special schools data in lower secondary education are not applicable.
 Special classes data are not applicable.
 Regular classes data in pre-primary education are missing.
 Regular classes data in lower secondary education are not applicable.

Special Schools – Category 3. Total percentage of students who are orthopaedically handicapped falling within the resources definition, by phase of education

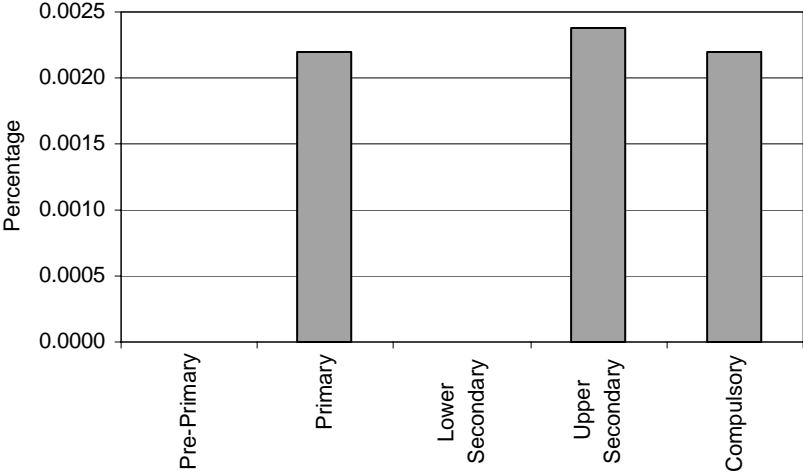


Note: Special schools data in lower secondary education are not applicable.

**Special Classes – Category 3. Orthopaedically
handicapped**

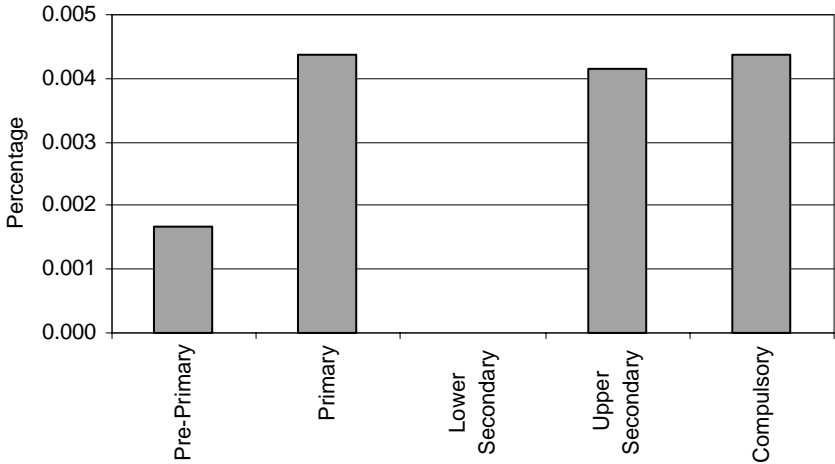
NOT APPLICABLE

**Regular Classes – Category 3. Total percentage of students who are orthopaedically
handicapped falling within the resources definition, by phase of education**



Note: Regular classes data in pre-primary education are missing.
Regular classes data in lower secondary education are not applicable.

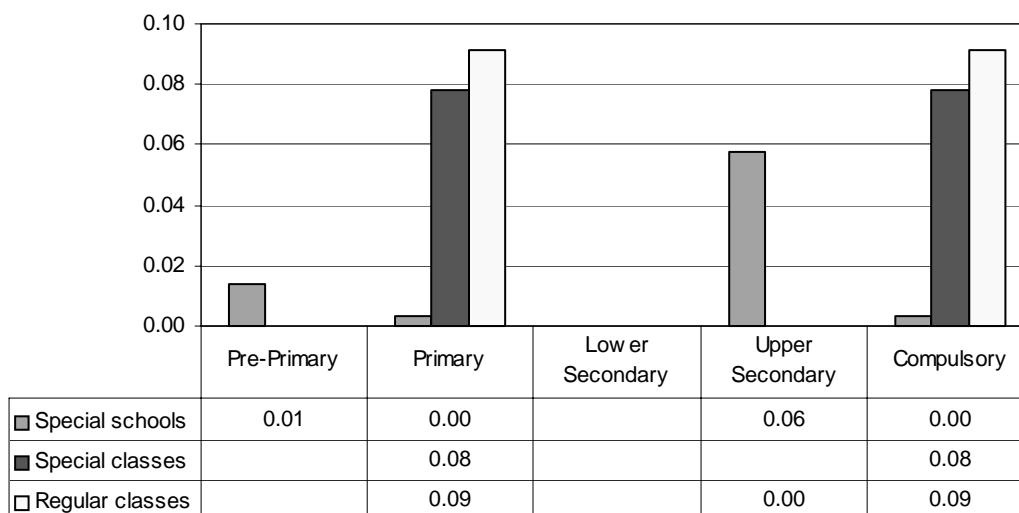
**Total – Category 3. Total percentage of students who are orthopaedically handicapped
falling within the resources definition**



Note: Special schools data in lower secondary education are not applicable.
Special classes data are not applicable.
Regular classes data in pre-primary education are missing.
Regular classes data in lower secondary education are not applicable.

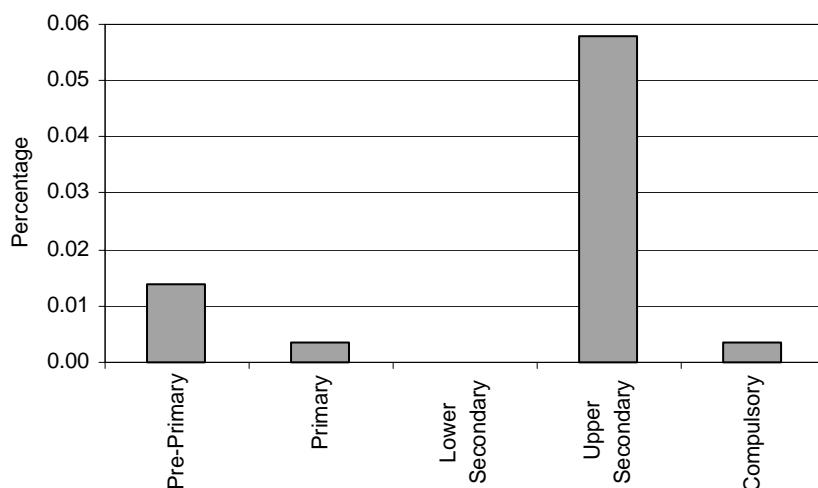
Category 4 Cross-national Category A - Mentally handicapped whose IQ is between 45-75 as measured by various intelligence scales.

Proportion of students with educable mental handicaps by phases of education in special schools, special classes and regular classes



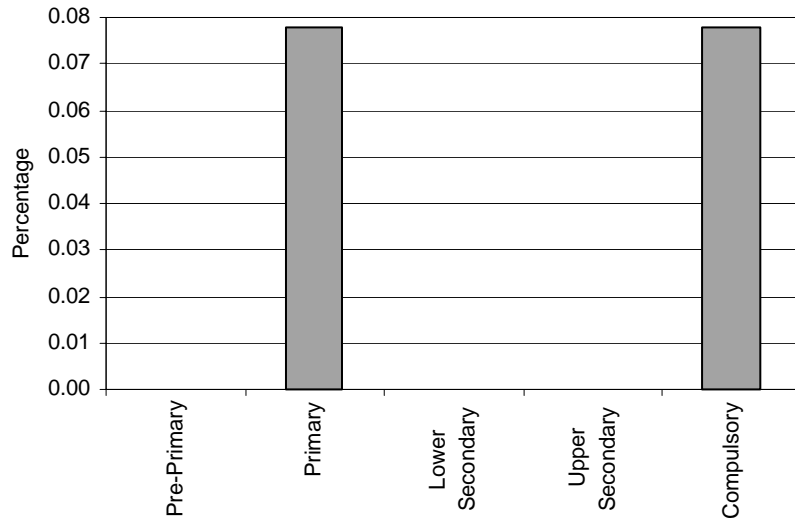
Note: Special schools data in lower secondary education are not applicable.
 Special classes data in pre-primary, lower secondary and upper secondary education are not applicable.
 Regular classes data in pre-primary education are missing.
 Regular classes data in lower secondary education are not applicable.

Special Schools – Category 4. Total percentage of students with educable mental handicaps falling within the resources definition, by phase of education



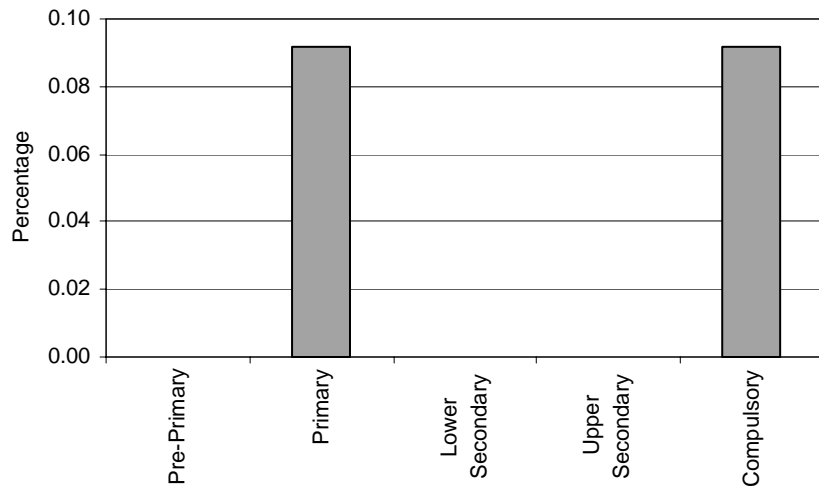
Note: Special schools data in lower secondary education are not applicable.

Special Classes – Category 4. Total percentage of students with educable mental handicaps falling within the resources definition, by phase of education



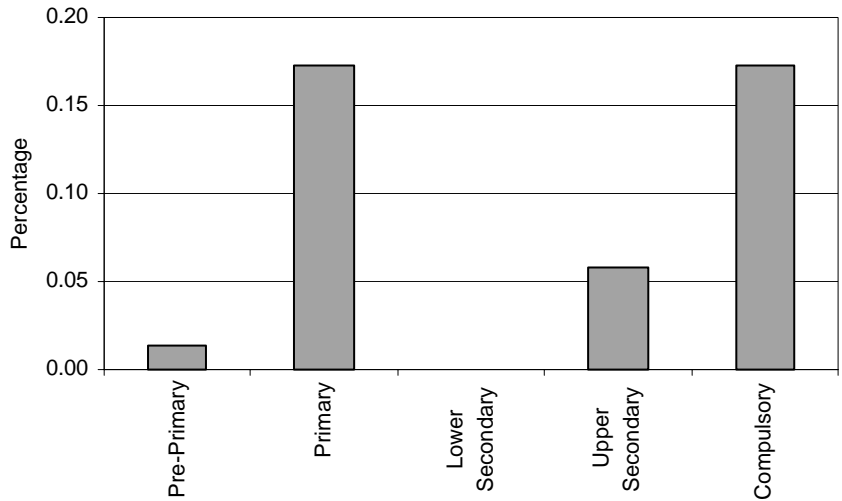
Note: Special classes data in pre-primary, lower secondary and upper secondary education are not applicable.

Regular Classes – Category 4. Total percentage of students with educable mental handicaps falling within the resources definition, by phase of education



Note: Regular classes data in pre-primary education are missing.
Regular classes data in lower secondary education are not applicable.

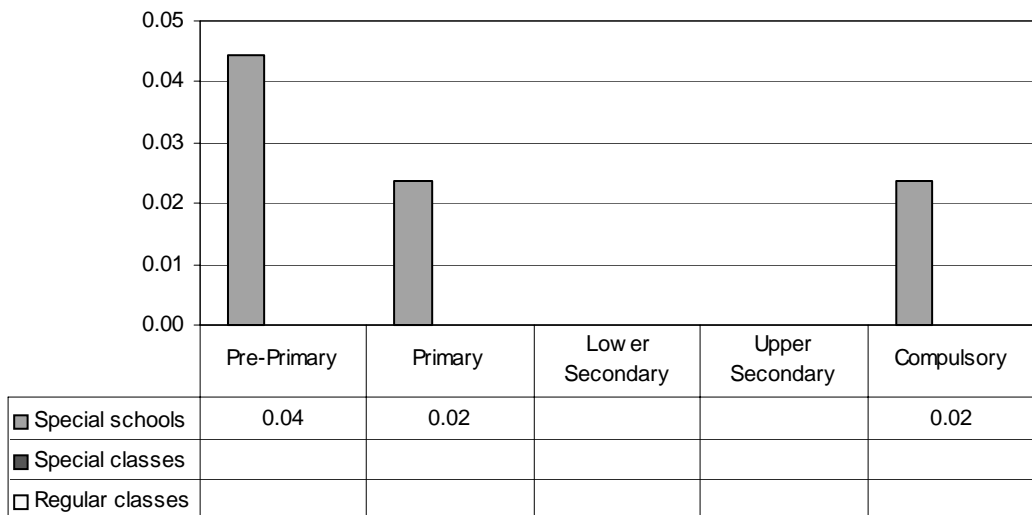
Total – Category 4. Total percentage of students with educable mental handicaps falling within the resources definition



Note: Special schools data in lower secondary education are not applicable.
 Special classes data in pre-primary, lower secondary and upper secondary education are not applicable.
 Regular classes data in pre-primary education are missing.
 Regular classes data in lower secondary education are not applicable.

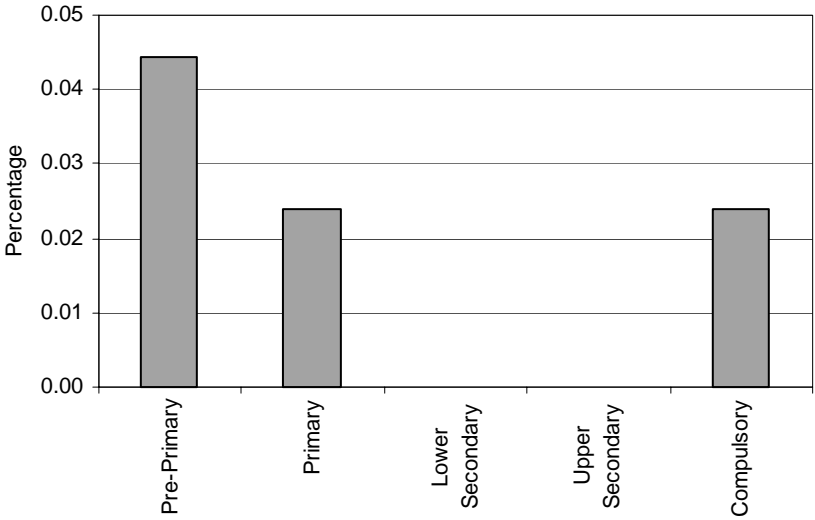
Category 5 Cross-national Category A - Mentally handicapped whose IQ is between 25-45 as measured by various intelligence scales.

Proportion of students with trainable mental handicaps by phases of education in special schools, special classes and regular classes



Note: Special schools data in lower secondary and upper secondary education are not applicable.
 Special classes data are not applicable.
 Regular classes data are missing.

Special schools – Category 5. Total percentage of students with trainable mental handicaps falling within the resources definition, by phase of education

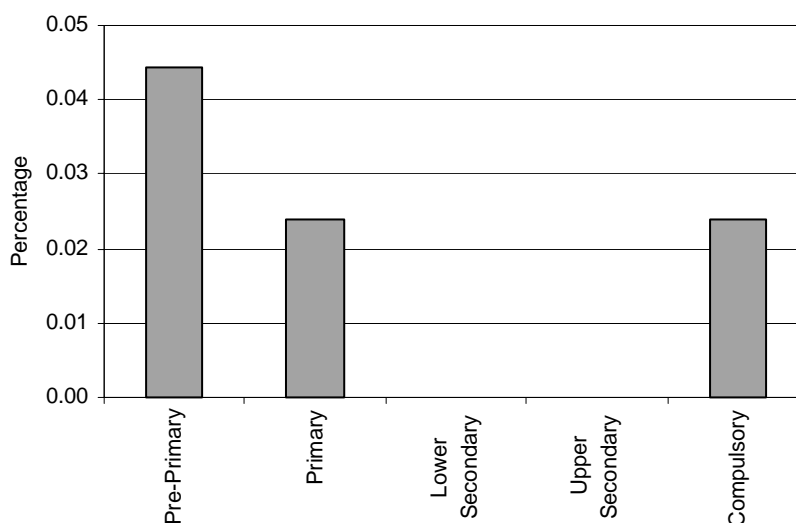


Note: Special schools data in lower secondary and upper secondary education are not applicable.

Special Classes – Category 5. Trainable mentally handicapped
NOT APPLICABLE

Regular Classes – Category 5. Trainable mentally handicapped
MISSING

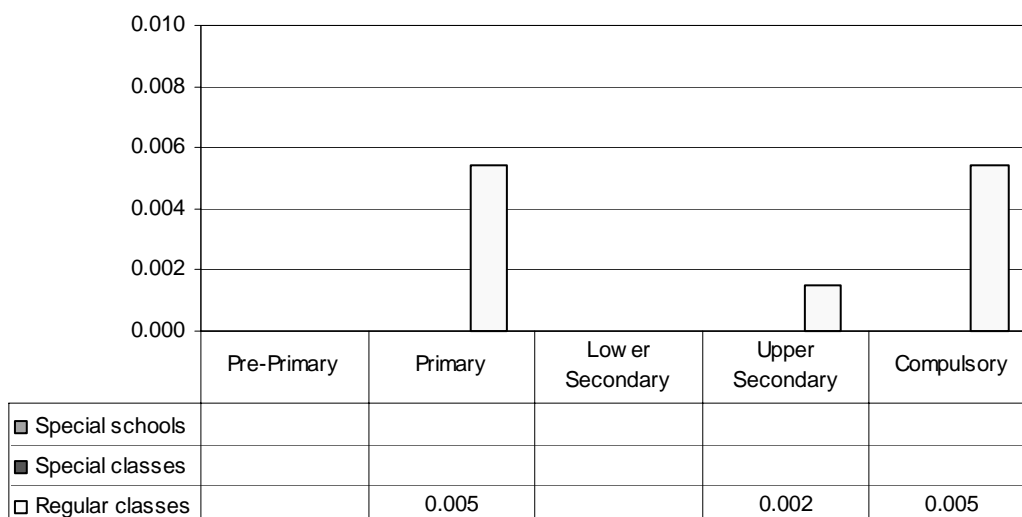
Total – Category 5. Total percentage of students with trainable mental handicaps falling within the resources definition



Note: Special schools data in lower secondary and upper secondary education are not applicable.
 Special classes data are not applicable.
 Regular classes data are missing.

Category 6 Cross-national Category A - The ones who have impairments in the flow, rhythm and pitch of their speech and in using their voice and articulation effectively.

Proportion of students with speech impairments by phases of education in special schools, special classes and regular classes

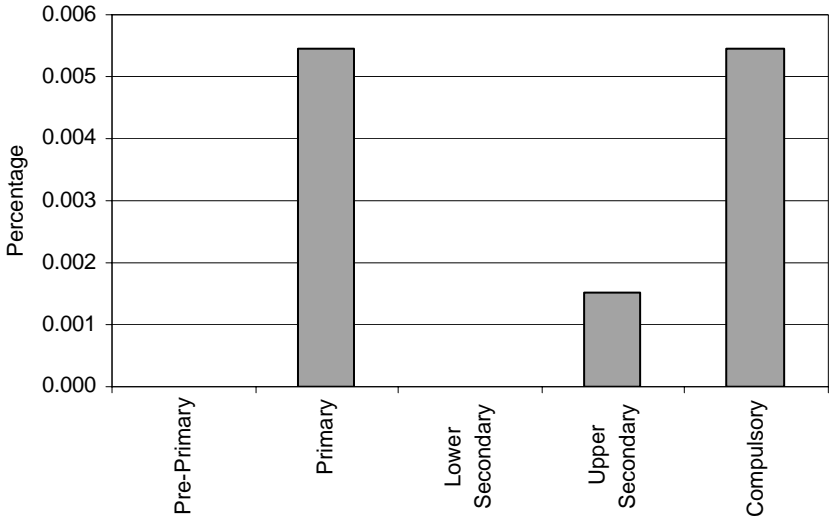


Note: Special schools data are not applicable.
 Special classes data are not applicable.
 Regular classes data in pre-primary education are missing.
 Regular classes data in lower secondary education are not applicable.

Special Schools – Category 6. Speech impairment
NOT APPLICABLE

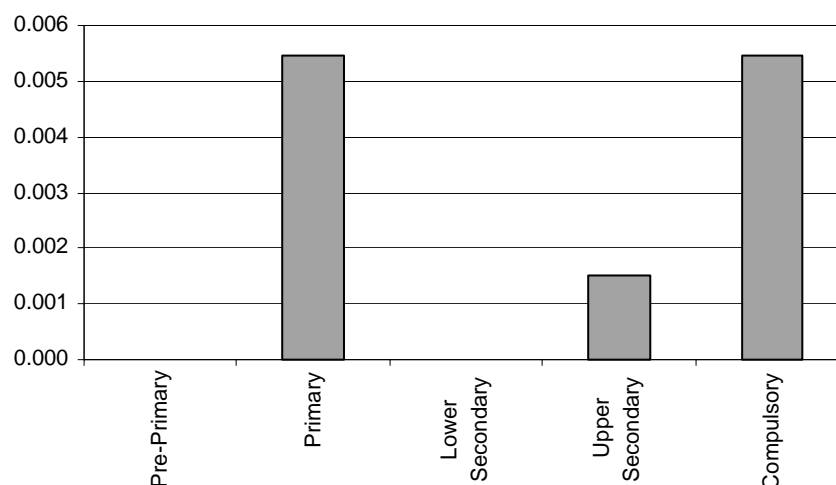
Special Classes – Category 6. Speech impairment
NOT APPLICABLE

Regular Classes – Category 6. Total percentage of students with speech impairments falling within the resources definition



Note: Regular classes data in pre-primary education are missing.
Regular classes data in lower secondary education are not applicable.

Total – Category 6. Total percentage of students with speech impairments falling within the resources definition



Note: Special schools data are not applicable.
 Special classes data are not applicable.
 Regular classes data in pre-primary education are missing.
 Regular classes data in lower secondary education are not applicable.

Category 7 Cross-national Category B - The ones whose IQ is 130 or above as measured by various intelligence scales (gifted) and whose IQ is 110 or above as measured by various intelligence scales (talented) who show superior talents in the areas such as fine arts and technical areas as compared to their peers.

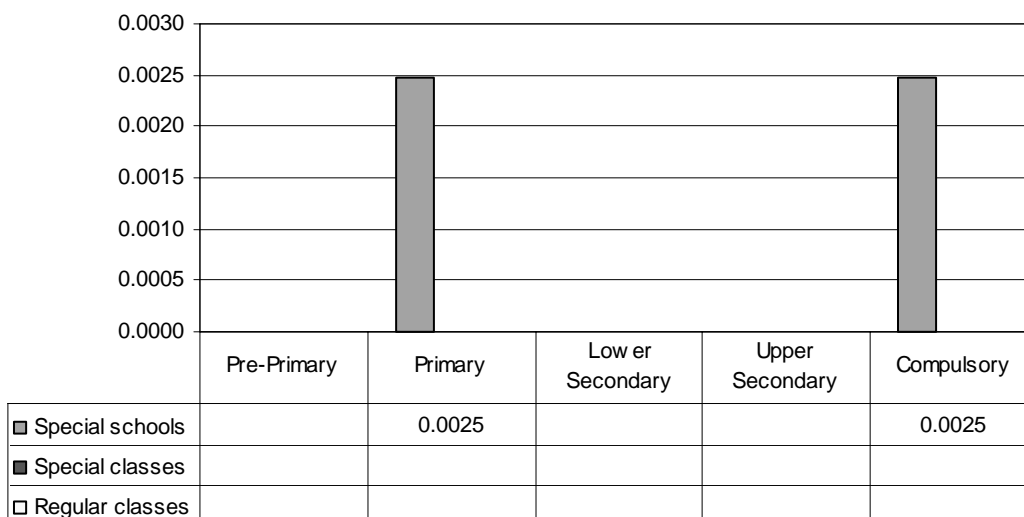
Special schools – Category 7. Gifted and talented
 CATEGORY NOT TAKEN INTO ACCOUNT IN THIS STUDY

Special Classes – Category 7. Gifted and talented
 CATEGORY NOT TAKEN INTO ACCOUNT IN THIS STUDY

Regular Classes – Category 7. Gifted and talented
 CATEGORY NOT TAKEN INTO ACCOUNT IN THIS STUDY

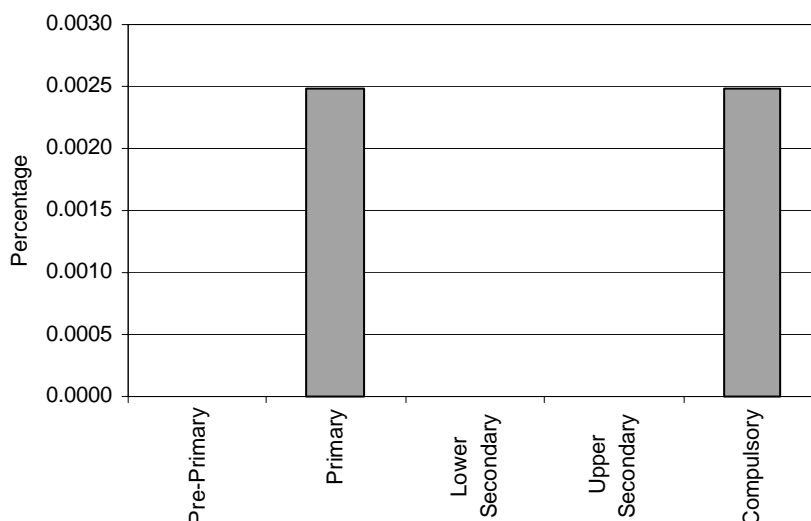
Category 8 Cross-national Category A - The ones who need special measures to be taken in their education because of the illnesses which require permanent care and medication.

Proportion of students who are chronically ill by phases of education in special schools, special classes and regular classes



Note: Special schools data in pre-primary, lower secondary and upper secondary education are not applicable. Special classes data are not applicable. Regular classes data are missing.

Special Schools – Category 8. Total percentage of students who are chronically ill falling within the resources definition, by phase of education

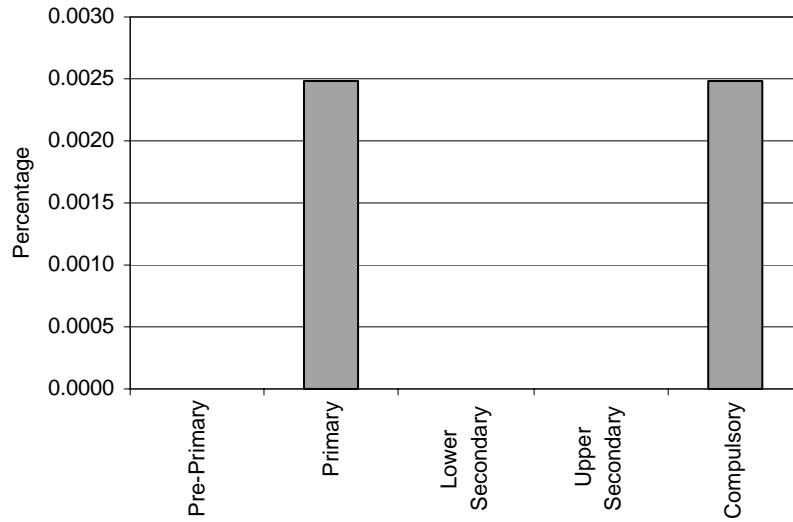


Note: Special schools data in pre-primary, lower secondary and upper secondary education are not applicable.

Special Classes – Category 8. Chronically ill
NOT APPLICABLE

Regular Classes – Category 8. Chronically ill
MISSING

Total – Category 8. Total percentage of students who are chronically ill falling within the resources definition



Note: Special schools data in pre-primary, lower secondary and upper secondary education are not applicable.
Special classes data are not applicable.
Regular classes data are missing.