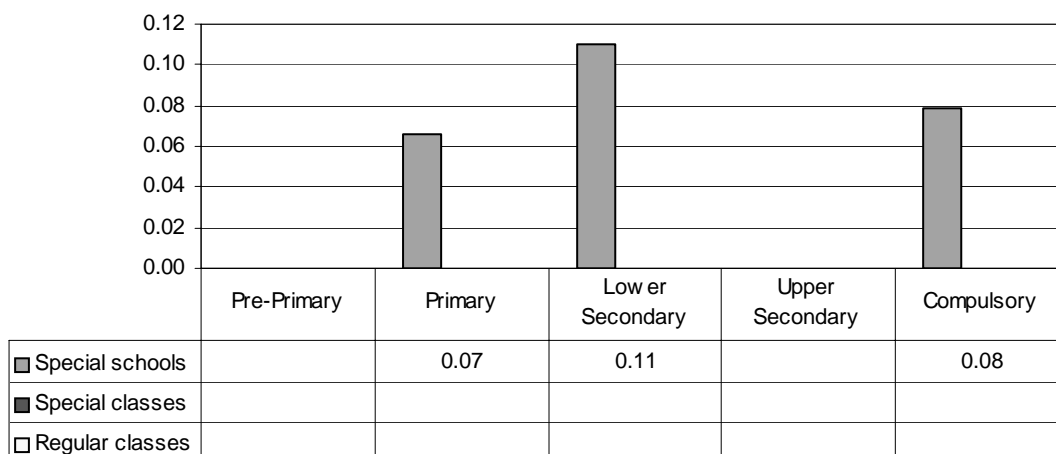


SWEDEN

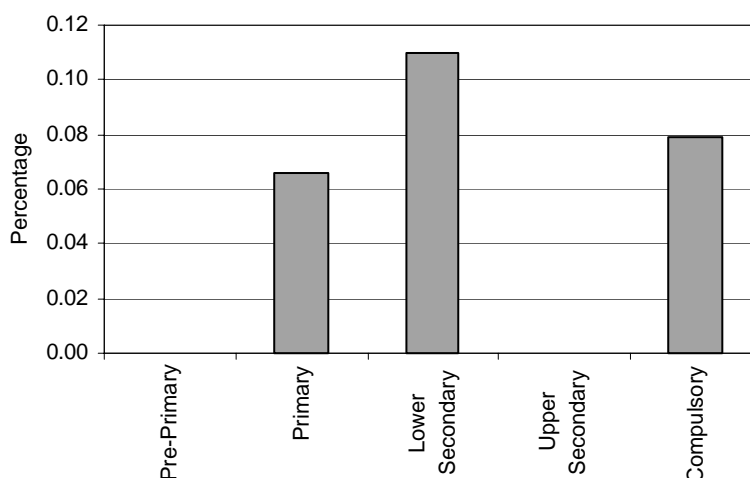
Category 1 Cross-national Category A - Special schools exist for deaf, hard of hearing, sight-impaired and speech- or language-impaired children with secondary disabilities. There are eight special schools in Sweden with approximately 800 students. Most intellectually handicapped children, though, attend compulsory school for those with learning difficulties (cat. 2) or are integrated in regular schools (cat. 5 and 6). Special school is of ten years' duration and has its own syllabus. Term grades are awarded from year 9 and leaving certificates are awarded at the end of year 10. The same rules apply to the assessment of grades as in compulsory school, but the criteria are in respect of year 10 (instead of 9). Suitable parts of those national tests used in compulsory school may be used in special school.

Proportion of students with impaired hearing, vision and physical disabilities by phases of education in special schools, special classes and regular classes



Note: Special schools data in pre-primary and upper secondary education are not applicable.
Special schools and regular classes data are not applicable.

Special Schools – Category 1. Total percentage of students with impaired hearing, vision and physical disabilities falling within the resources definition, by phase of education



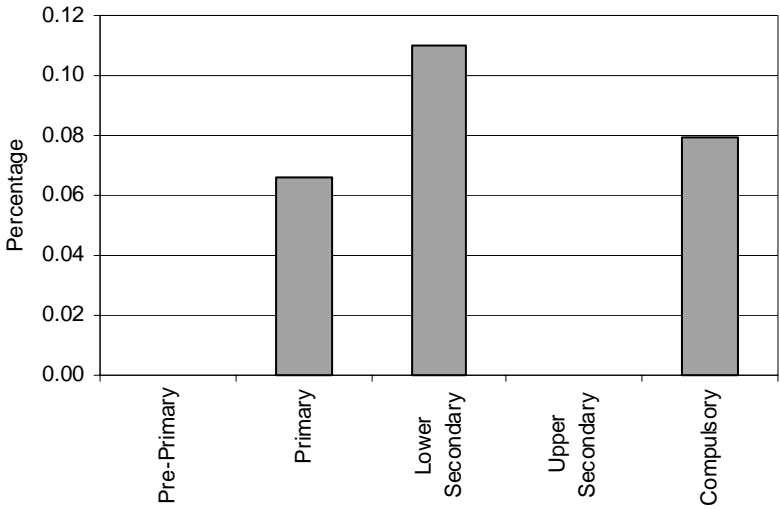
Note: Special schools data in pre-primary and upper secondary education are not applicable.

Special Classes – Category 1. Pupils with impaired hearing, vision and physical disabilities

NOT APPLICABLE

Regular Classes – Category 1. Pupils with impaired hearing, vision and physical disabilities

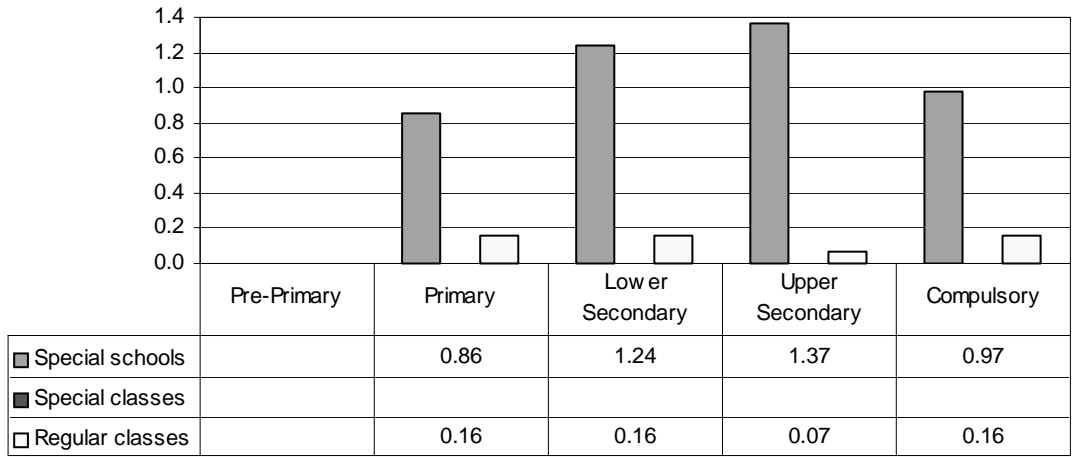
NOT APPLICABLE



Note: Special schools data in pre-primary and upper secondary education are not applicable. Special schools and regular classes data are not applicable.

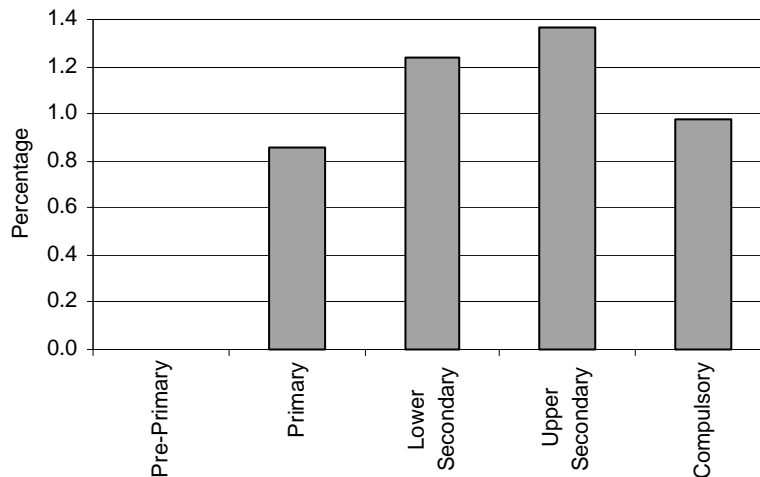
Category 2 Cross-national Category A - Compulsory school and upper secondary school for the mentally retarded has the same curriculum as other compulsory and upper secondary schools but has its own syllabus adapted to this type of schooling and the pupils. Compulsory school for mentally retarded comprises compulsory basic school for the mentally handicapped and training school. It involves nine years of compulsory schooling and in addition to this, pupils are entitled to a tenth, optional school year to supplement their education. Compulsory basic schools for the mentally handicapped are attended by pupils with minor difficulties. They are basically taught the same subjects as pupils in regular compulsory schools. However, the content and scope of the subjects are adapted according to aptitude, with in many cases an individual teaching plan for each pupil. Training school pupils have disabilities that prevent them from assimilating instruction in compulsory school for the mentally handicapped. Instead of individual subjects, the training school syllabus has five teaching areas, which together are intended to foster sound, all-round development. Upper secondary school for those with learning difficulties offers vocational education in the same way as regular upper secondary in the form of national, specially designed or individual programmes. All programmes are of four years' duration, apart from individual programmes, and include core subjects and programme-specific subjects. Pupils attending compulsory and upper secondary school for the mentally retarded must be issued a certificate on completion of their studies. A final assessment is also obtainable on request.

Proportion of students with mental retardation by phases of education in special schools, special classes and regular classes



Note: Students with mental retardation belong to a separate educational organisation. These special schools however are usually integrated in regular schools.
 Special schools data in pre-primary education are not applicable.
 Special classes data are not applicable.
 Regular classes data in pre-primary education are not applicable.

Special schools – Category 2. Total percentage of students with mental retardation falling within the resources definition, by phase of education

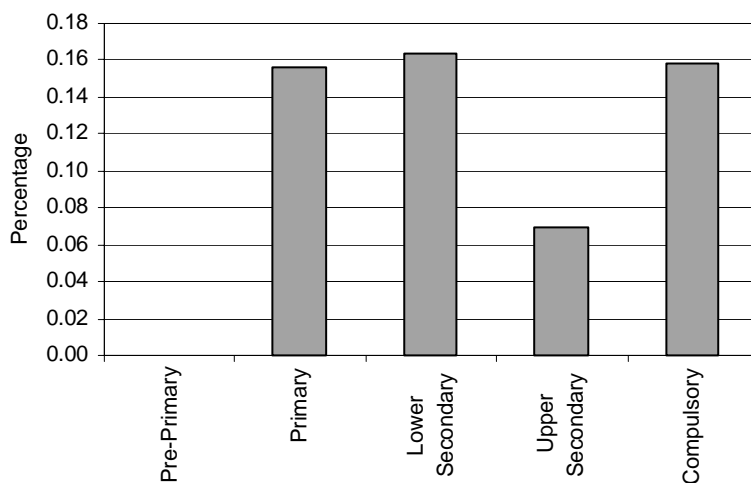


Note: Students with mental retardation belong to a separate educational organisation. These special schools however are usually integrated in regular schools.
 Special schools data in pre-primary education are not applicable.

Special Classes – Category 2. Pupils with mental retardation

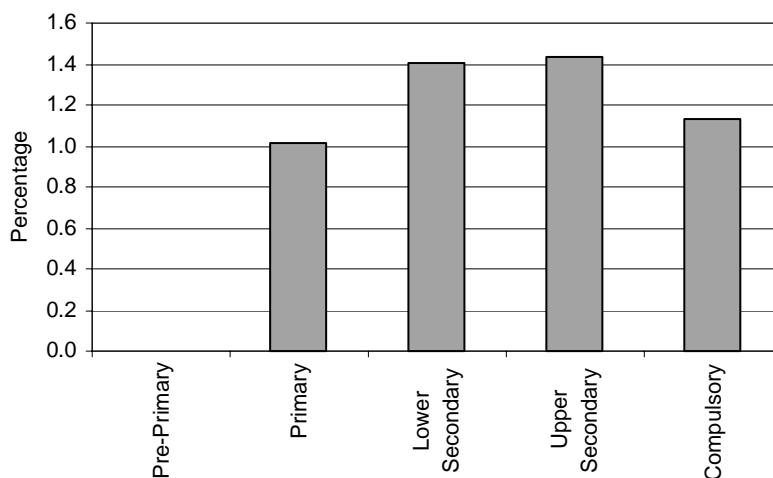
NOT APPLICABLE

Regular Classes – Category 2. Total percentage of students with mental retardation falling within the resources definition, by phase of education



Note: Students with mental retardation belong to a separate educational organisation. These special schools however are usually integrated in regular schools.
Regular classes data in pre-primary education are not applicable.

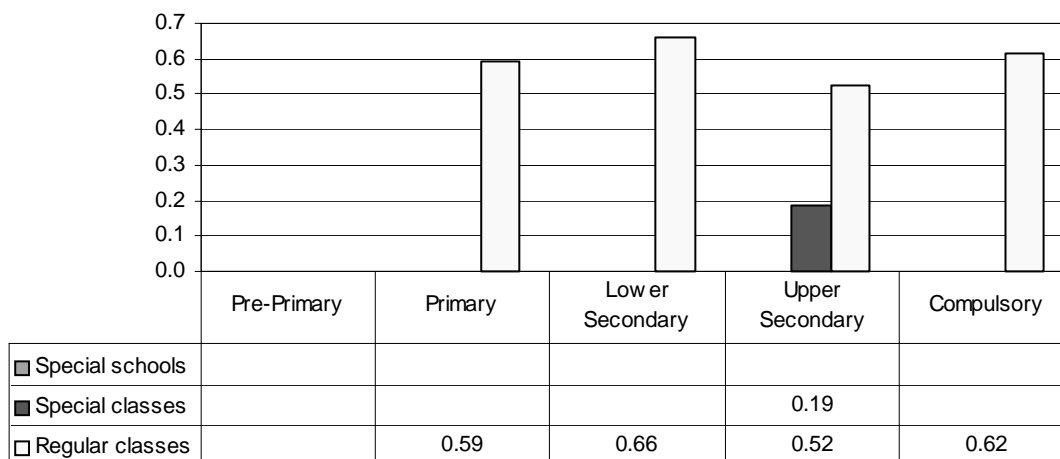
Total – Category 2. Total percentage of students with mental retardation falling within the resources definition



Note: Students with mental retardation belong to a separate educational organisation. These special schools however are usually integrated in regular schools.
Special schools data in pre-primary education are not applicable.
Special classes data are not applicable.
Regular classes data in pre-primary education are not applicable.

Category 3 Cross-national Category A - Defined as students in need of special support in their schooling because of their disabilities. Students who are deaf or with impaired hearing and/or physical disabilities from all over the country can apply to five regular upper secondary schools in Sweden. Almost all deaf students and approximately 20% of the students with impaired hearing or physical disabilities are enrolled in special classes in these schools. Other students in this category attend regular classes.

Proportion of students with impaired hearing and/or physical disabilities by phases of education in special schools, special classes and regular classes

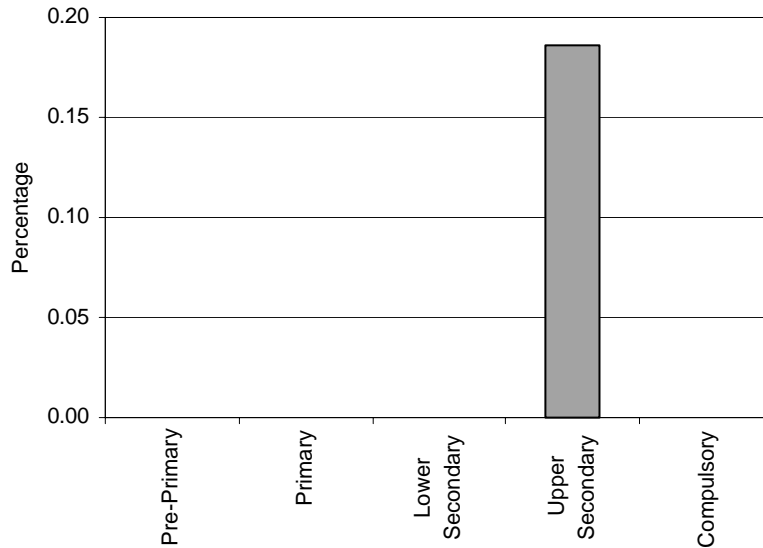


Note: Special schools data are not applicable.
 Special classes data in pre-primary, primary, lower secondary and compulsory education are not applicable.
 Regular classes data in pre-primary education are missing.

Special Schools – Category 3. Students with impaired hearing and/or physical disabilities

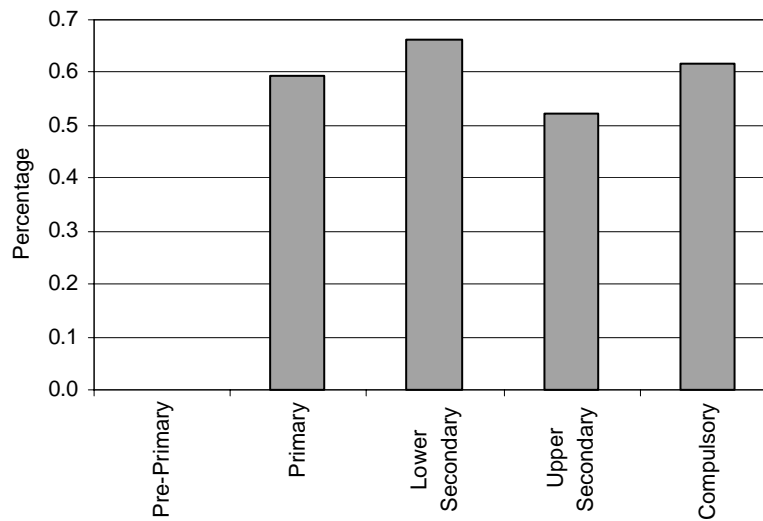
NOT APPLICABLE

Special Classes – Category 3. Total percentage of students with impaired hearing and/or physical disabilities falling within the resources definition, by phase of education



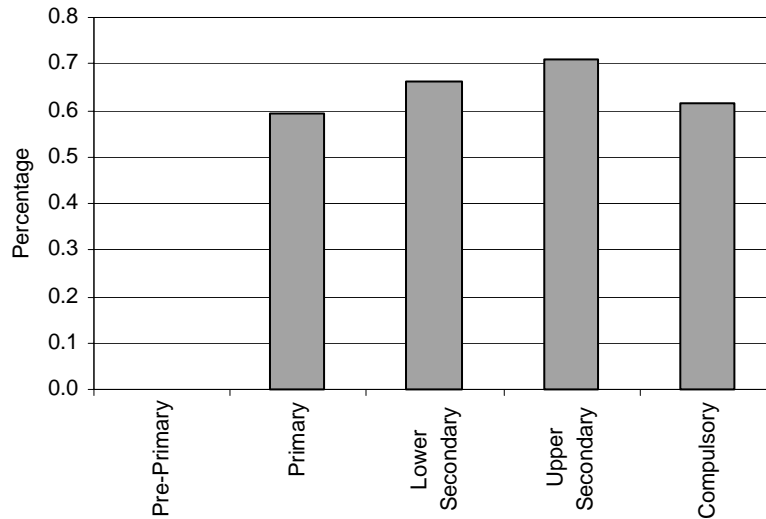
Note: Special classes data in pre-primary, primary, lower secondary and compulsory education are not applicable.

Regular Classes – Category 3. Total percentage of students with impaired hearing and/or physical disabilities falling within the resources definition, by phase of education



Note: Regular classes data in pre-primary education are missing.

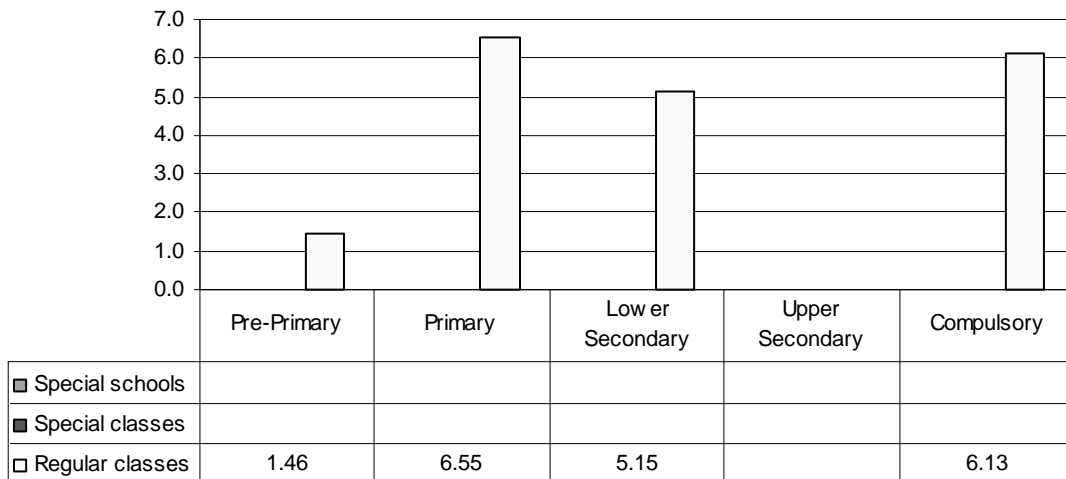
Total – Category 3. Total percentage of students with impaired hearing and/or physical disabilities falling within the resources definition



Note: Special schools data are not applicable.
 Special classes data in pre-primary, primary, lower secondary and compulsory education are not applicable.
 Regular classes data in pre-primary education are missing.

Category 4 Cross-national Category C - According to the Education Act and national guidelines, all students are entitled to tuition in their mother tongue and tuition in Swedish as a second language if, for example, one or both parents has another mother tongue than Swedish and this language is frequently used at home (for more detailed information on students' rights, etc., see the Education Act).

Proportion of students receiving tuition in mother tongue and/or Swedish as a second language by phases of education in special schools, special classes and regular classes



Note: Special schools data are not applicable.
 Special classes data are included in regular classes data.
 Regular classes data in upper secondary education are missing.

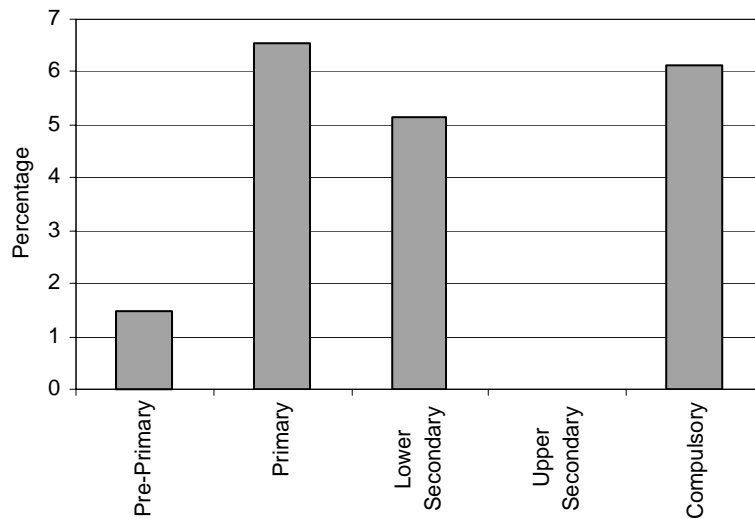
Special Schools – Category 4. Students receiving tuition in mother tongue and/or Swedish as a second language

NOT APPLICABLE

Special Classes – Category 4. Students receiving tuition in mother tongue and/or Swedish as a second language

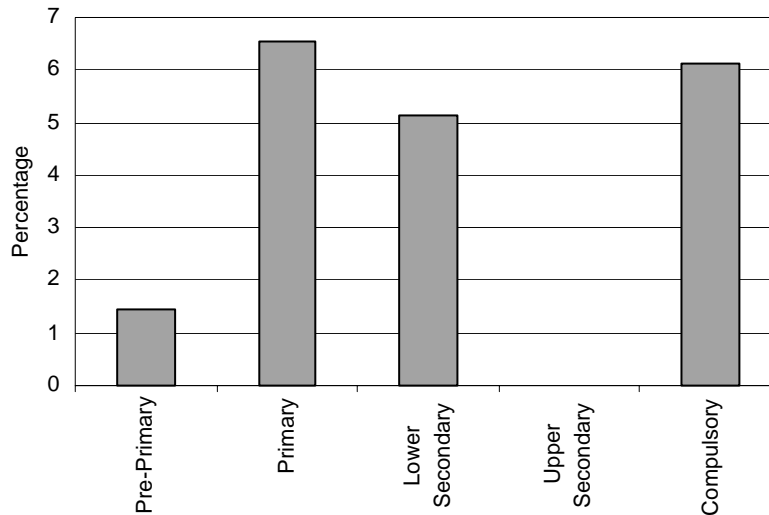
INCLUDED IN REGULAR CLASSES

Regular Classes – Category 4. Total percentage of students receiving tuition in mother tongue and/or Swedish as a second language falling within the resources definition, by phase of education



Note: Regular classes data in upper secondary education are missing.

Total – Category 4. Total percentage of students receiving tuition in mother tongue and/or Swedish as a second language falling within the resource definition



Note: Special schools data are not applicable.
 Special classes data are included in regular classes data.
 Regular classes data in upper secondary education are missing.

Category 5 Cross-national Category C - Students with special educational needs in inclusive settings, not included in national categories 1-4. According to Swedish legislation, all students in need of special support are entitled to this. The support is given in various forms in regular schools. We do not currently collect information on this group of students, that can be categorised in CNC C or in CNC B. For students in segregated settings, data is available and presented, but this is a small group relative to all student with special educational need who receive additional resources.

Special Schools – Category 5. Students in need of special support
 NOT APPLICABLE

Special Classes – Category 5. Students in need of special support
 NOT APPLICABLE

Regular Classes – Category 5. Students in need of special support
 MISSING