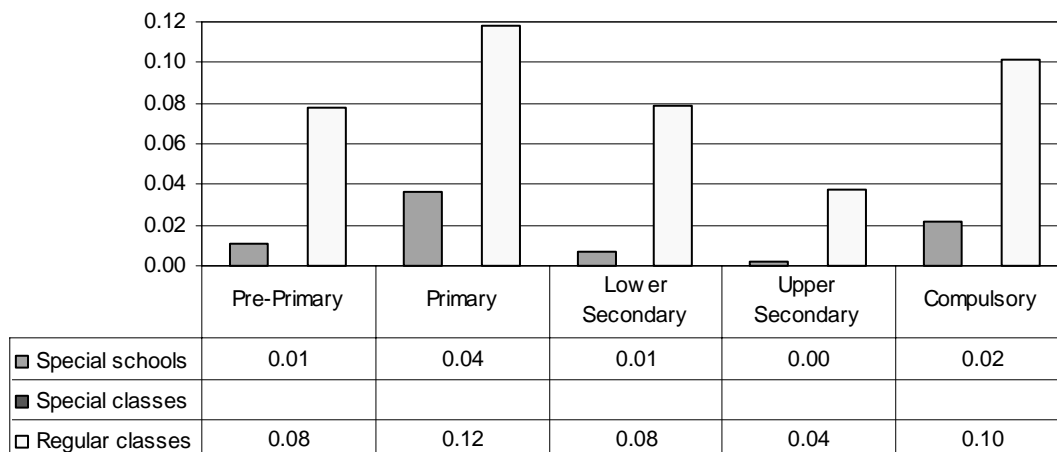


**SPAIN**

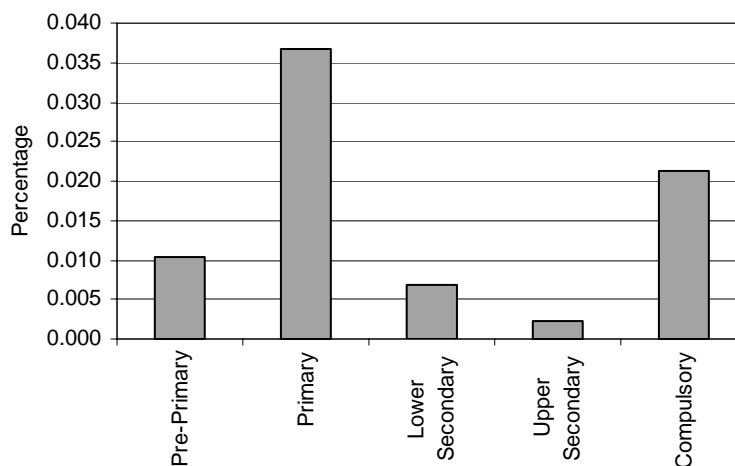
*Category 1 Cross-national Category A - Students with partial or complete hearing loss.*

**Proportion of students with hearing impairments by phases of education in special schools, special classes and regular classes**



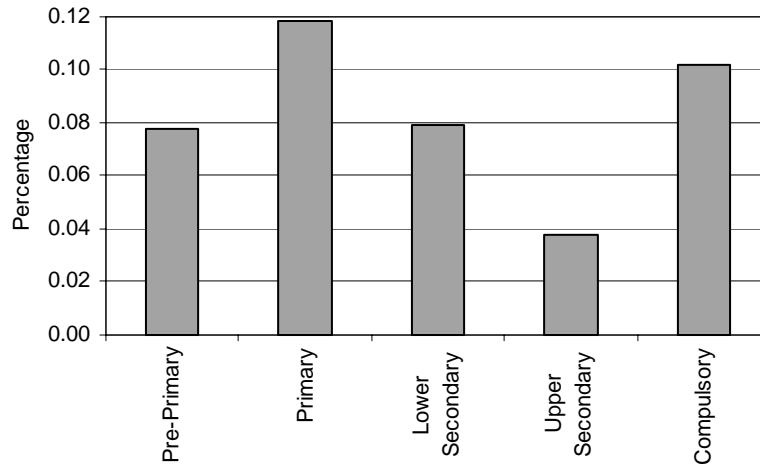
Note: Special classes data are included in special schools data.

**Special Schools – Category 1. Total percentage of students with hearing impairments falling within the resources definition, by phase of education**

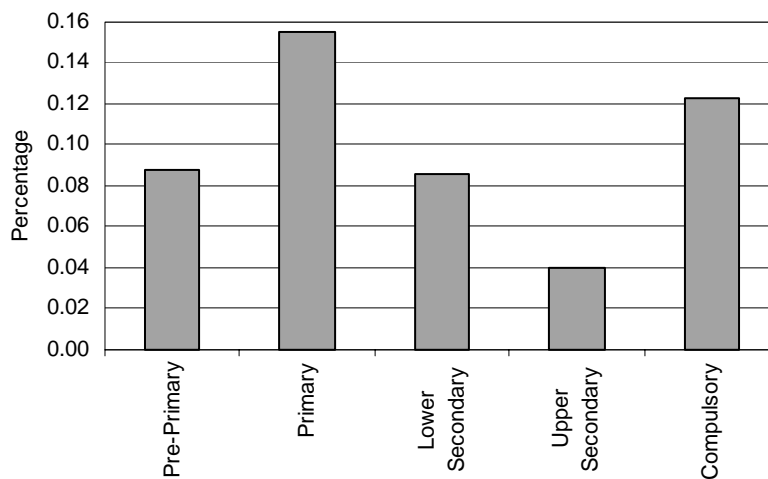


**Special Classes – Category 1. Hearing impairment**  
 INCLUDED IN SPECIAL SCHOOLS, CATEGORIES 1-6 INCLUDED

**Regular Classes – Category 1. Total percentage of students with hearing impairments falling within the resources definition, by phase of definition**



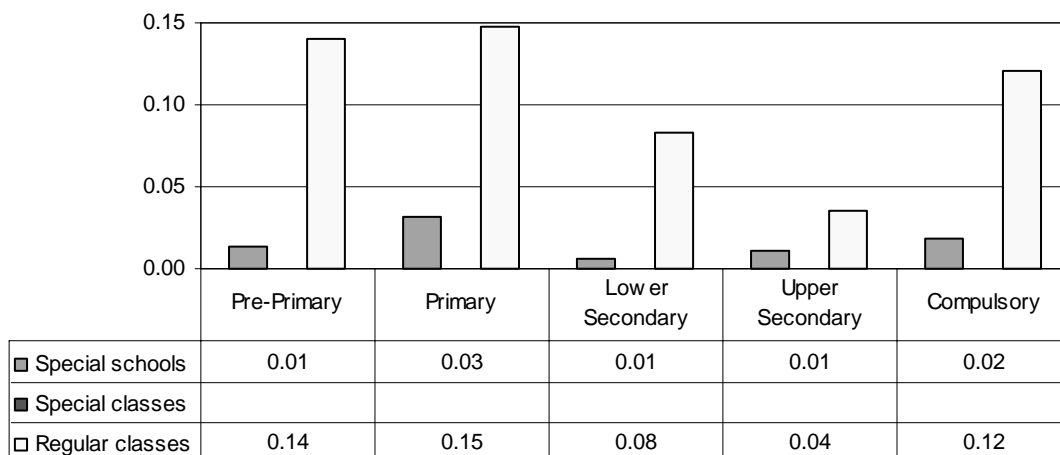
**Total – Category 1. Total percentage of students with hearing impairments falling within the resources definition**



Note: Special classes data are included in special schools data.

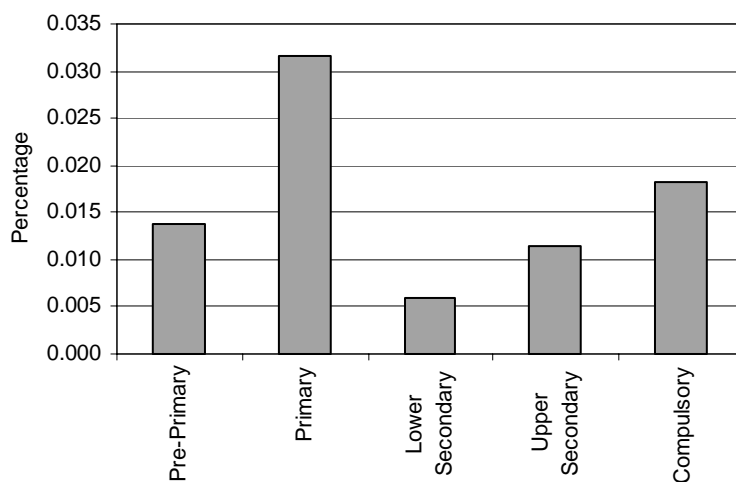
Category 2 Cross-national Category A - Motor system alteration due to a deficient osteo-articular, muscular and/or nervous system activity.

**Proportion of students with motor impairments by phases of education in special schools, special classes and regular classes**



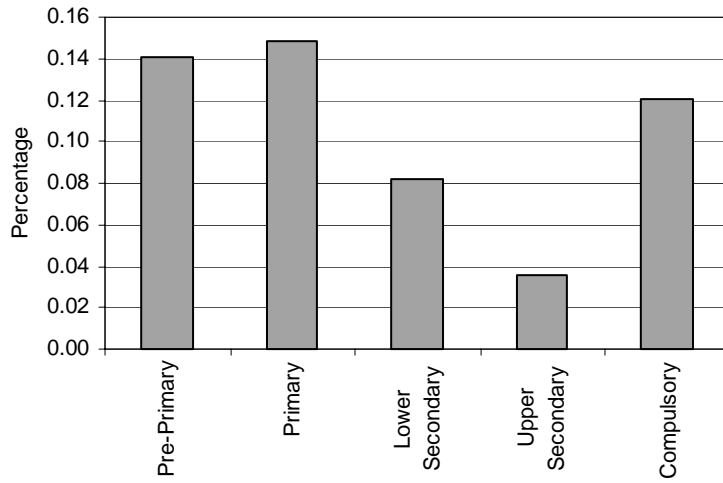
Note: Special classes data are included in special schools data.

**Special Schools – Category 2. Total percentage of students with motor impairments falling within the resources definition, by phase of education**

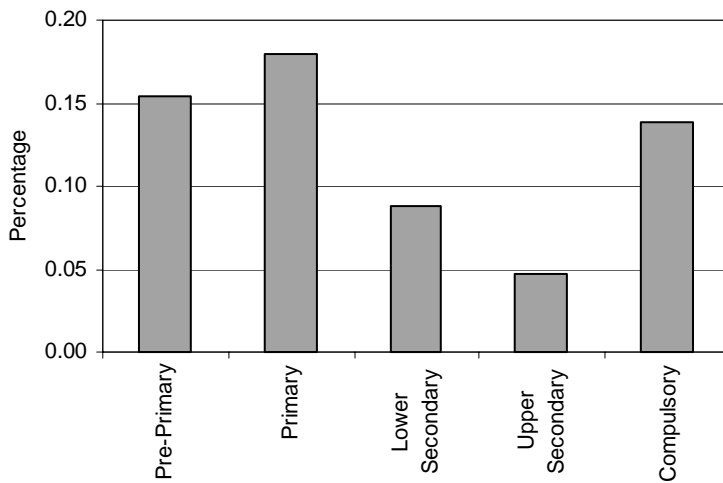


**Special Classes – Category 2. Motor impairment**  
 INCLUDED IN SPECIAL SCHOOLS, CATEGORIES 1-6 INCLUDED

**Regular Classes – Category 2. Total percentage of students with motor impairments falling within the resources definition, by phase of definition**



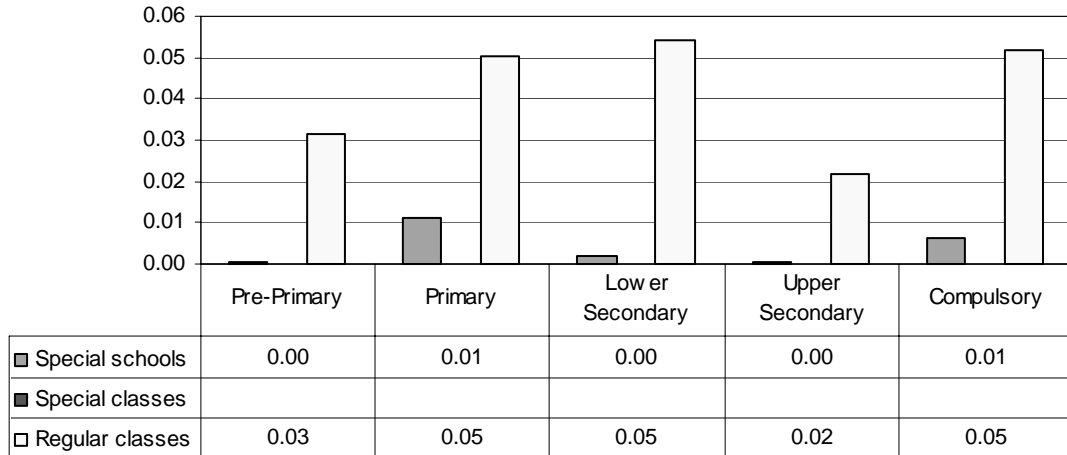
**Total – Category 2. Total percentage of students with motor impairments falling within the resources definition**



Note: Special classes data are included in special schools data.

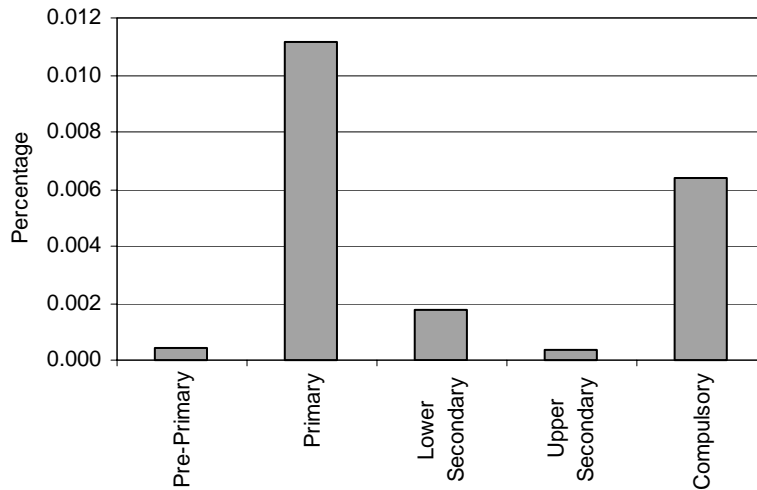
Category 3 Cross-national Category A - Significant or complete vision loss.

**Proportion of students with visual impairments by phases of education in special schools, special classes and regular classes**



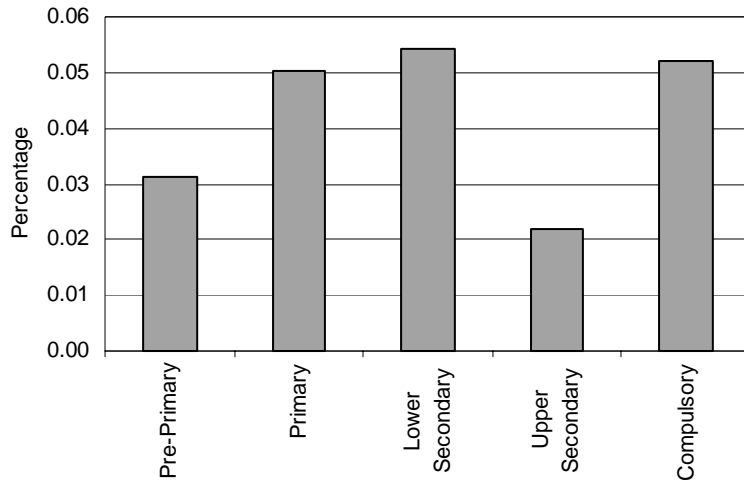
Note: Special classes data are included in special schools data.

**Special Schools – Category 3. Total percentage of students with visual impairments falling within the resources definition, by phase of education**

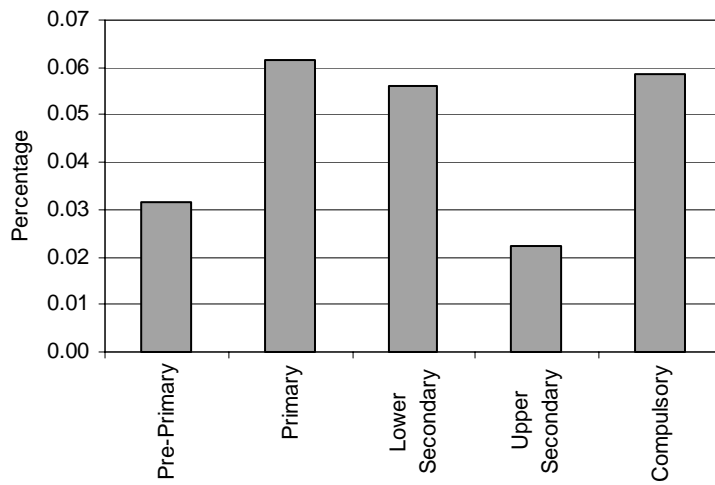


**Special Classes – Category 3. Visual impairment**  
 INCLUDED IN SPECIAL SCHOOLS, CATEGORIES 1-6 INCLUDED

**Regular Classes – Category 3. Total percentage of students with visual impairments falling within the resources definition, by phase of definition**



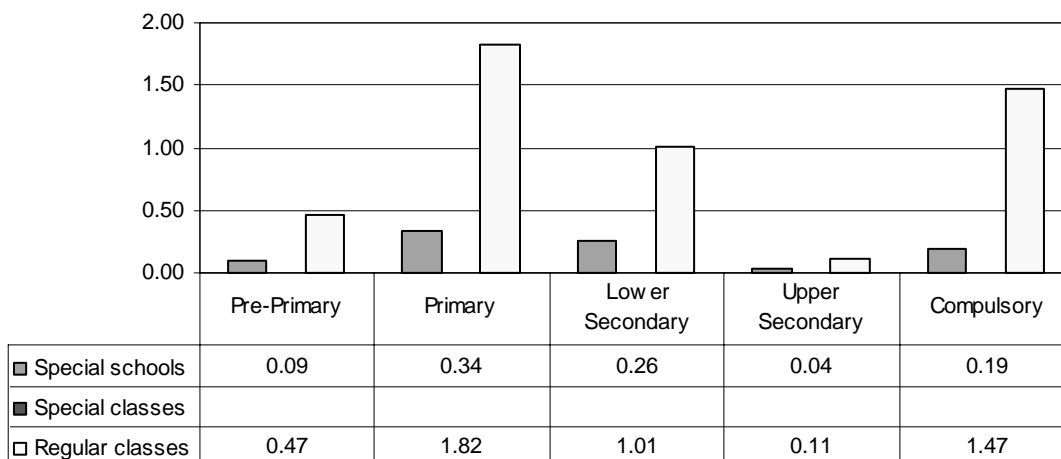
**Total – Category 3. Total percentage of students with visual impairments falling within the resources definition**



Note: Special classes data are included in special schools data.

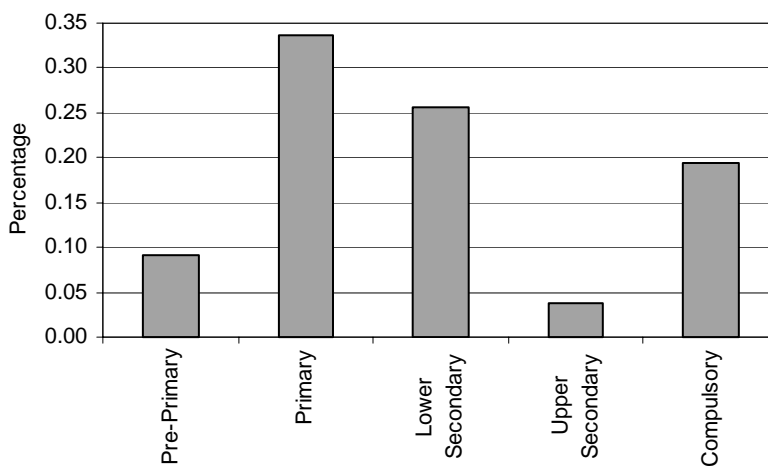
Category 4 Cross-national Category A - Intellectual performance significantly below average and substantial limitations in adoptive development, revealed before age 18.

**Proportion of students with mental handicaps by phases of education in special schools, special classes and regular classes**



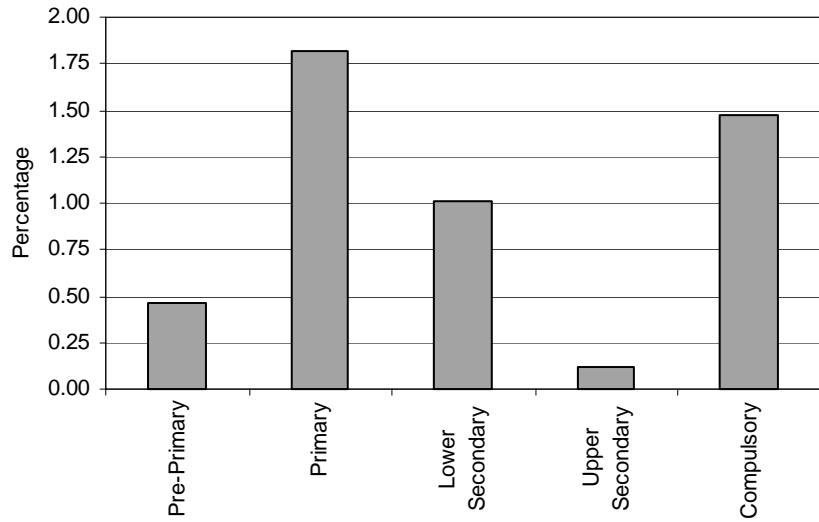
Note: Special classes data are included in special schools data.

**Special Schools – Category 4. Total percentage of students with mental handicaps falling within the resources definition, by phase of education**

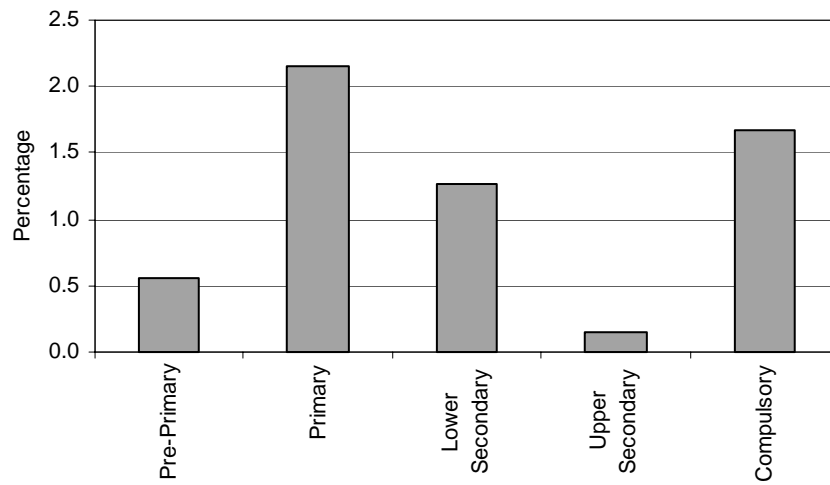


**Special Classes – Category 4. Mental handicaps**  
 INCLUDED IN SPECIAL SCHOOLS, CATEGORIES 1-6 INCLUDED

**Regular Classes – Category 4. Total percentage of students with mental handicaps falling within the resources definition, by phase of definition**



**Total – Category 4. Total percentage of students with mental handicaps falling within the resources definition**

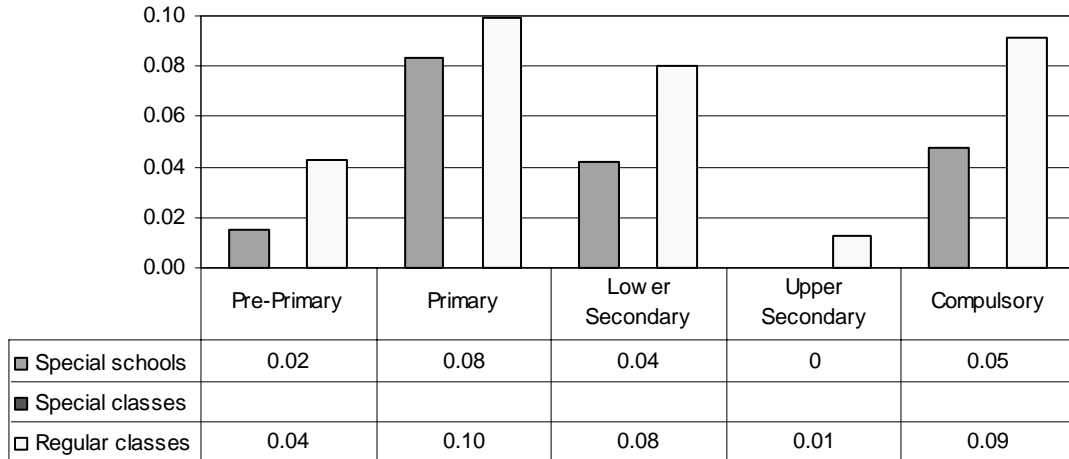


Note: Special classes data are included in special schools data.



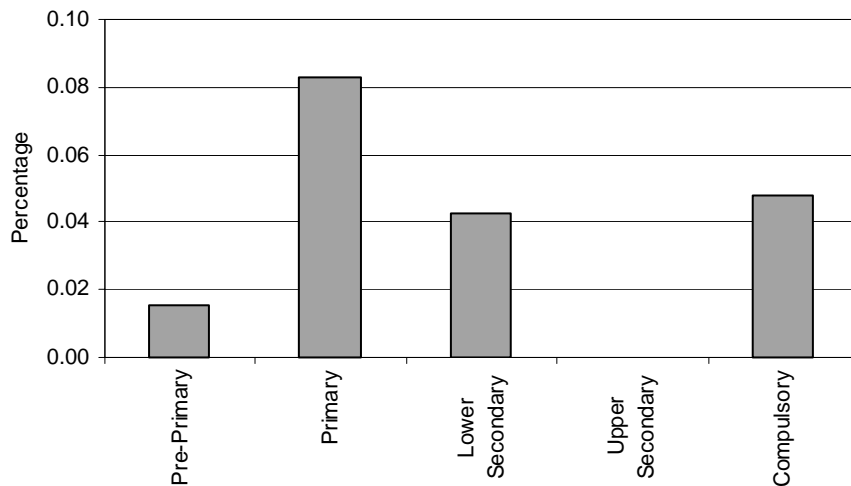
Category 5 Cross-national Category A - Personality alteration, generally linked with psychosis and autism.

**Proportion of students with emotional/behavioural problems by phases of education in special schools, special classes and regular classes**



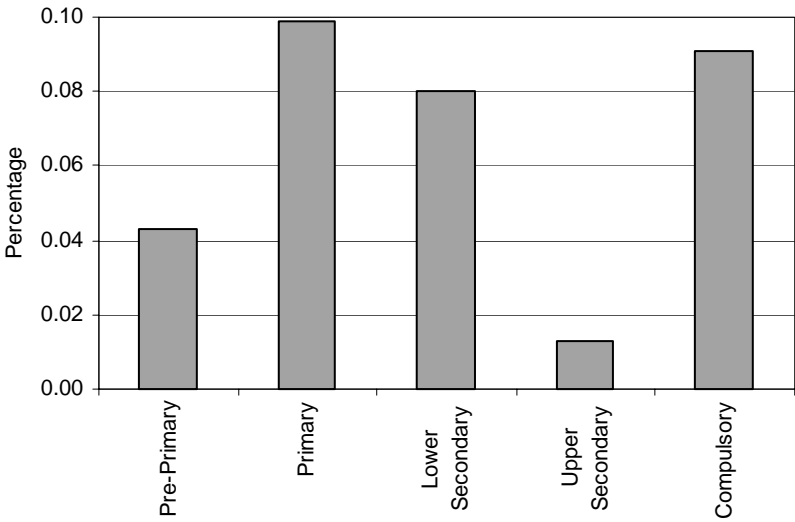
Note: Special classes data are included in special schools data.

**Special Schools – Category 5. Total percentage of students with emotional/behavioural problems falling within the resources definition, by phase of education**

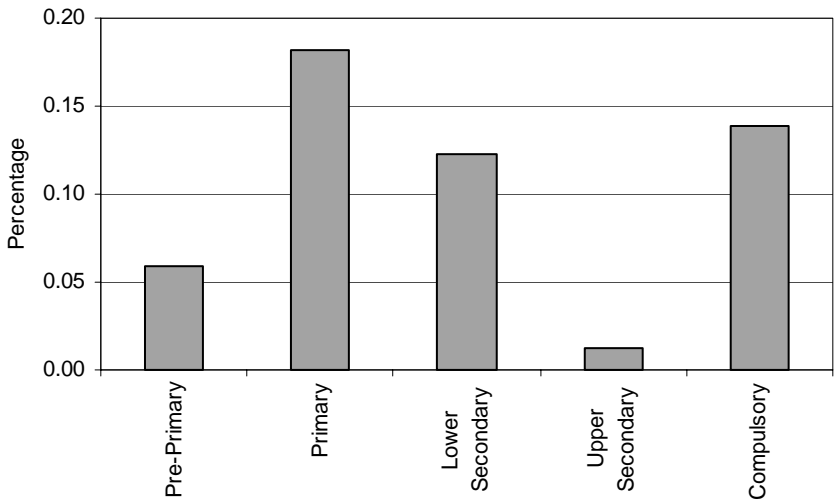


**Special Classes – Category 5.  
Emotional/behavioural problems**  
INCLUDED IN SPECIAL SCHOOLS, CATEGORIES  
1-6 INCLUDED

**Regular Classes – Category 5. Total percentage of students with emotional/behavioural problems falling within the resources definition, by phase of education**



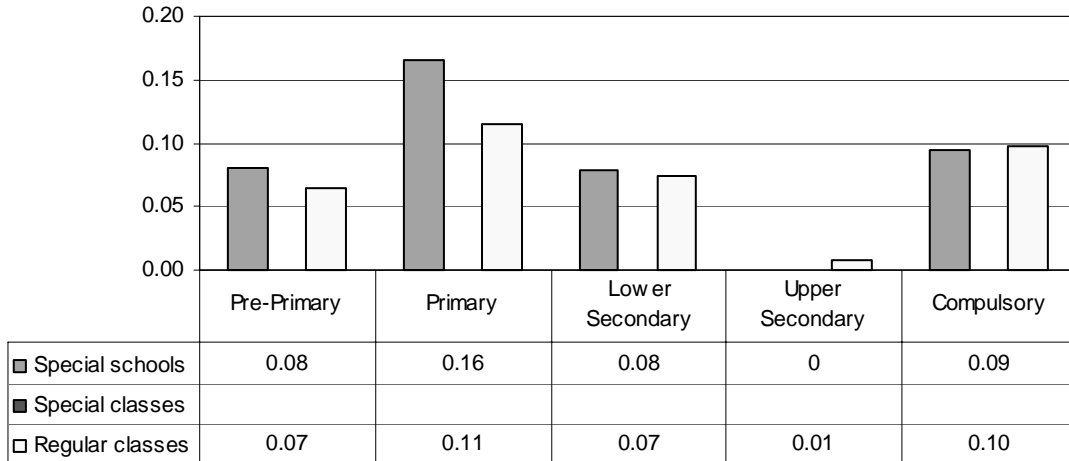
**Total – Category 5. Total percentage of students with emotional/behavioural problems falling within the resources definition**



Note: Special classes data are included in special schools data.

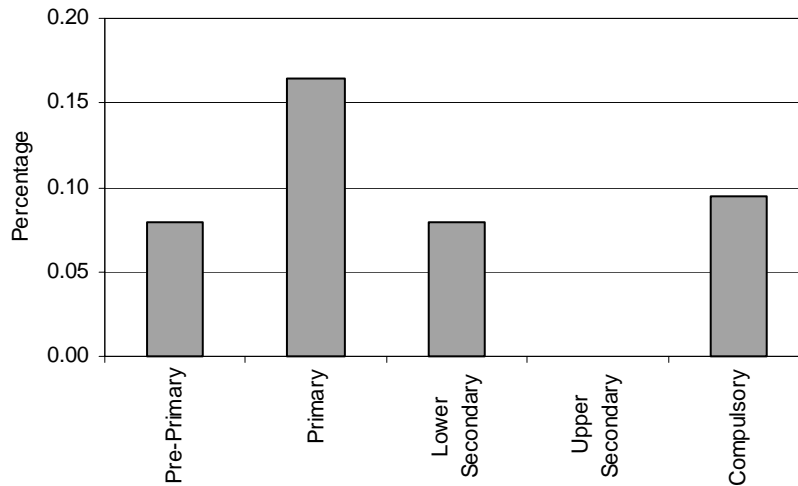
Category 6 Cross-national Category A - Two or more concurrent disabilities.

**Proportion of students with multiple impairments by phases of education in special schools, special classes and regular classes**



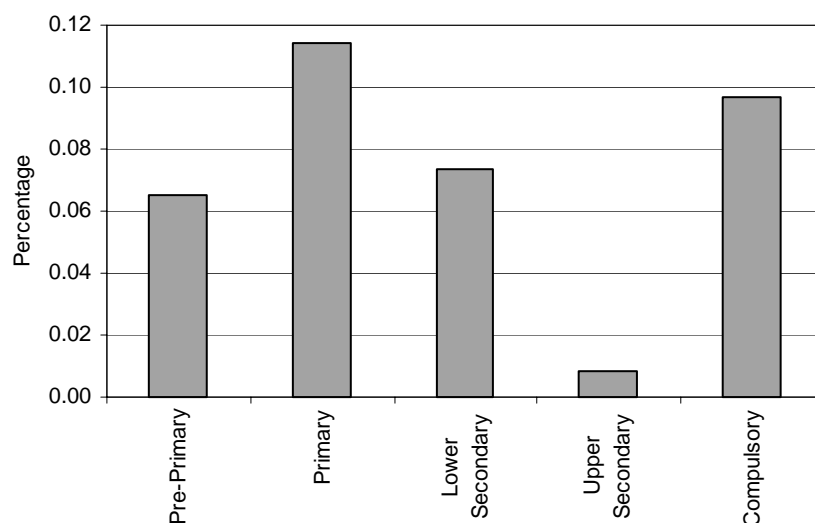
Note: Special classes data are included in special schools data.

**Special Schools – Category 6. Total percentage of students with multiple impairments falling within the resources definition, by phase of education**

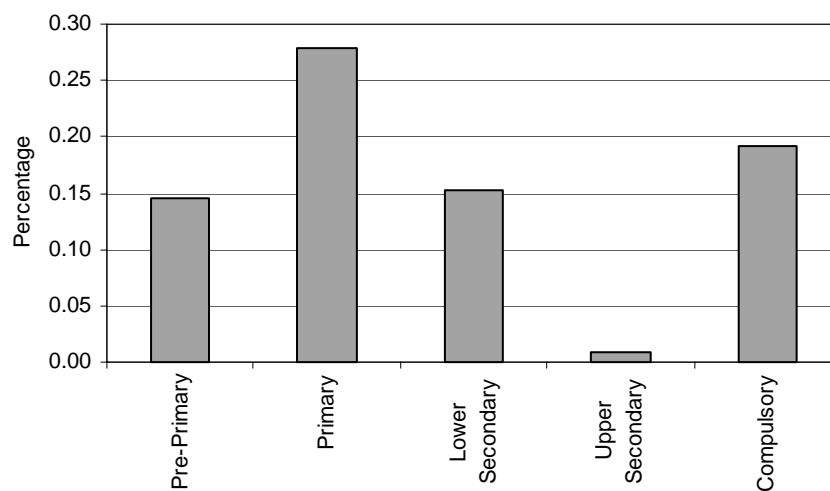


**Special Classes – Category 6. Multiple impairments**  
 INCLUDED IN SPECIAL SCHOOLS, CATEGORIES 1-6 INCLUDED

**Regular Classes – Category 6. Total percentage of students with multiple impairments falling within the resources definition, by phase of education**



**Total – Category 6. Total percentage of students with multiple impairments falling within the resources definition**



Note: Special classes data are included in special schools data.

*Category 7 Cross-national Category B* - Intellectual capability above average, high degree of devotion to tasks and creativity level.

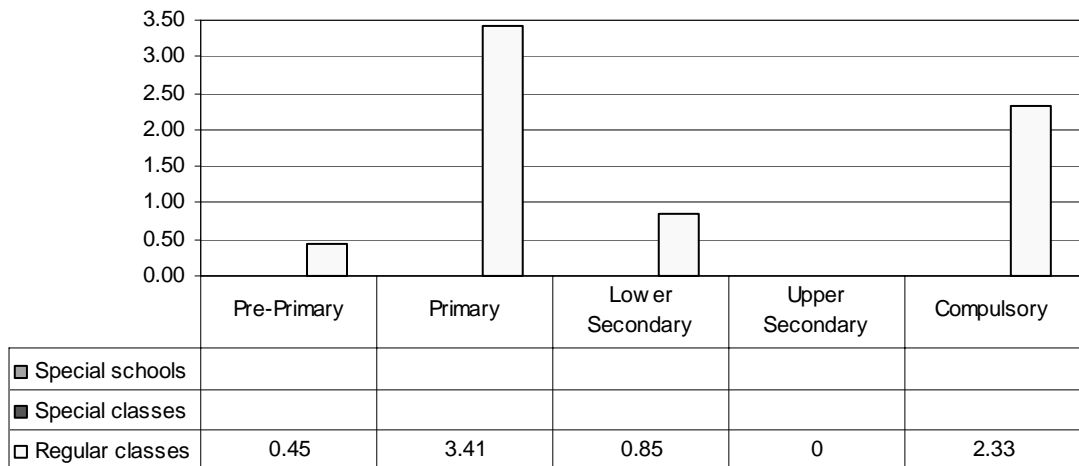
**Special Schools – Category 7. Highly gifted**  
 CATEGORY NOT TAKEN INTO ACCOUNT IN  
 THIS STUDY

**Special Classes – Category 7. Highly gifted**  
 CATEGORY NOT TAKEN INTO ACCOUNT IN  
 THIS STUDY

**Regular Classes – Category 7. Highly gifted**  
 CATEGORY NOT TAKEN INTO ACCOUNT IN  
 THIS STUDY

*Category 8 Cross-national Category C* - Addressed to students with social or cultural problems that are the cause of a delay in the achievement of knowledge.

**Proportion of students with compensatory education needs by phases of education in special schools, special classes and regular classes**

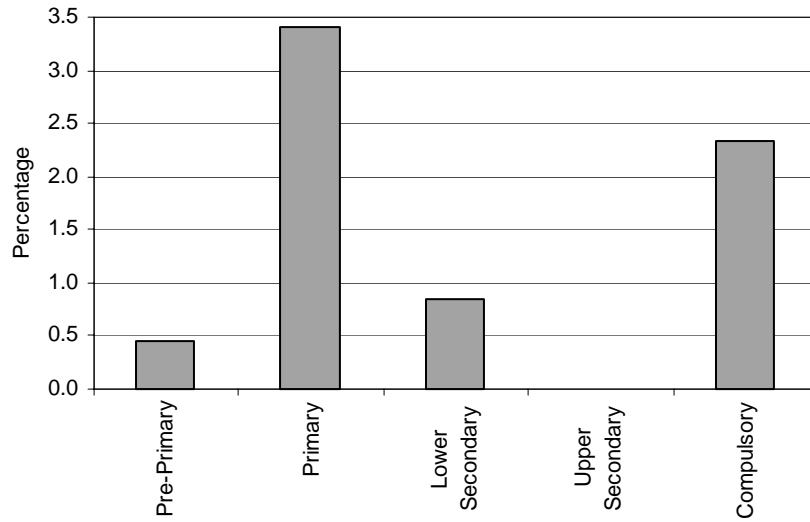


Note: Special schools and special classes data are not applicable.

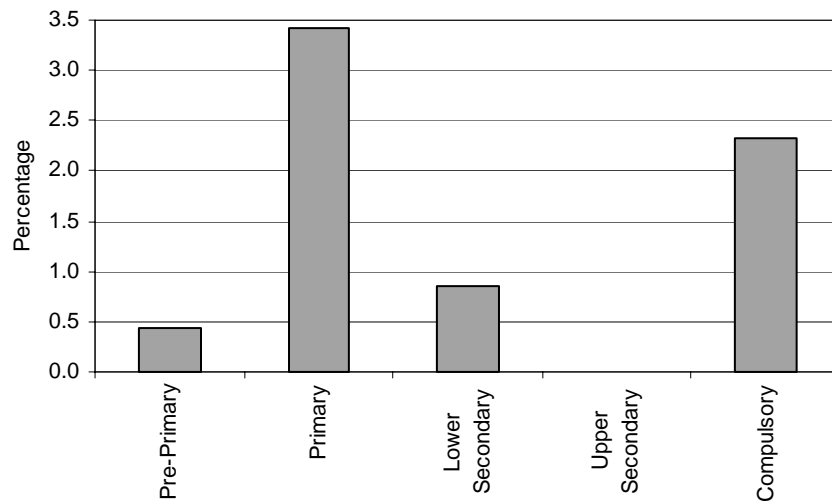
**Special Schools – Category 8. Students with compensatory education needs**  
 NOT APPLICABLE

**Special Classes – Category 8. Students with compensatory education needs**  
 NOT APPLICABLE

**Regular Classes – Category 8. Total percentage of students with compensatory education needs falling within the resources definition, by phase of education**



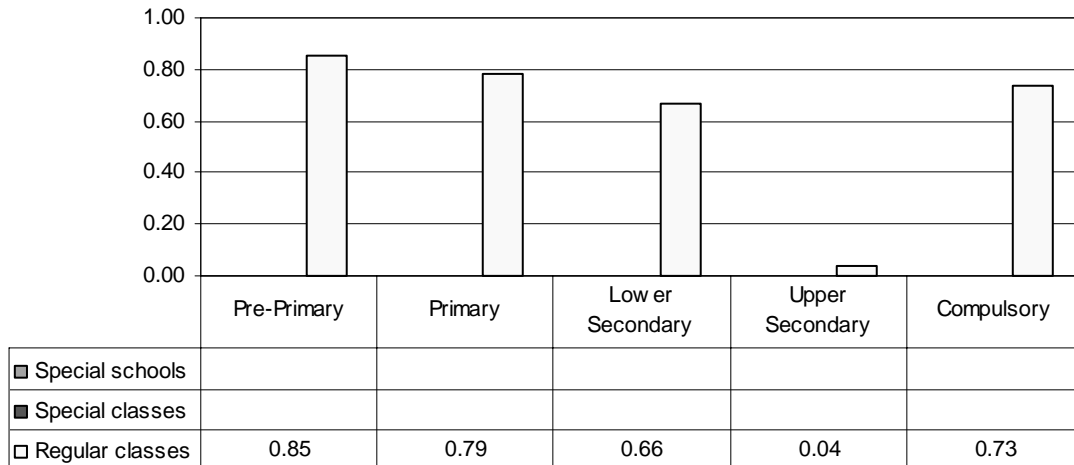
**Total – Category 8. Total percentage of students with compensatory education needs falling within the resources definition**



Note: Specials schools and special classes data are not applicable.

Category 9 Cross-national Category B - Addressed to students who have serious health problems and are hospitalised or housebound.

**Proportion of students with addressed programmes in hospitals or with health problems by phases of education in special schools, special classes and regular classes**

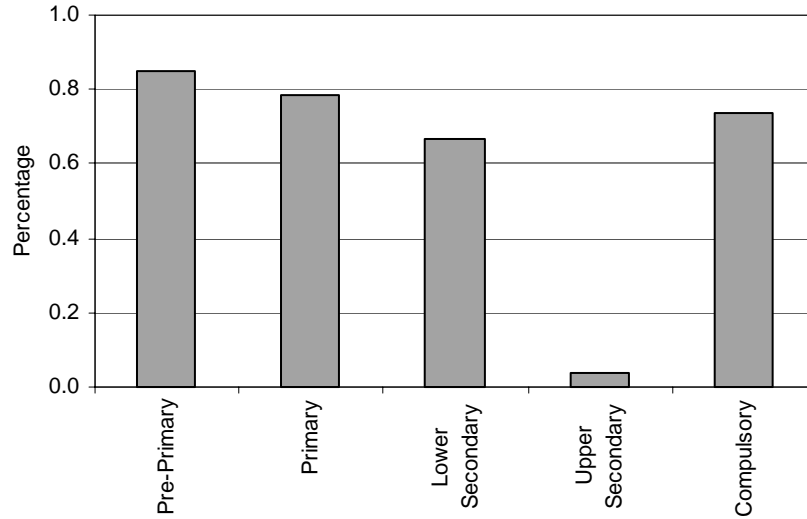


Note: Specials schools and special classes data are not applicable.

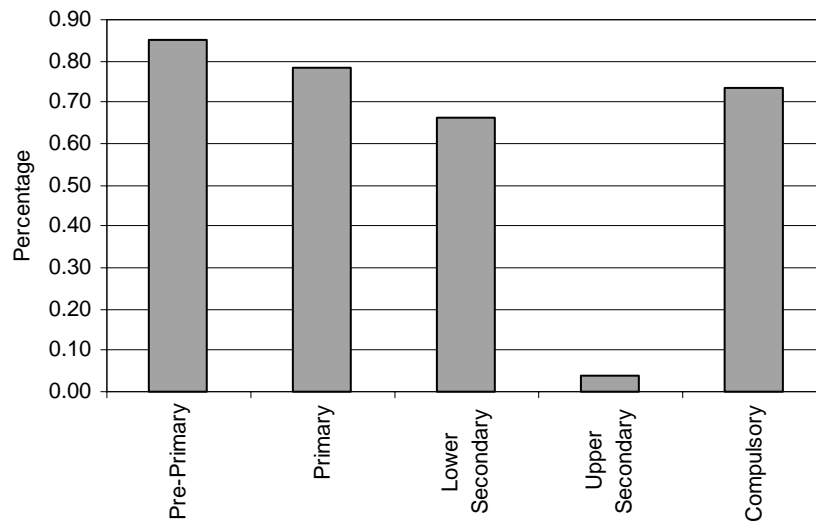
**Special Schools – Category 9. Programmes addressed to students in hospitals or with health problems**  
NOT APPLICABLE

**Special Classes – Category 9. Programmes addressed to students in hospitals or with health problems**  
NOT APPLICABLE

**Regular Classes – Category 9. Total percentage of students with addressed programmes in hospitals or with health problems falling within the resources definition, by phase of education**



**Total – Category 9. Total percentage of students with addressed programmes in hospitals or with health problems falling within the resources definition**

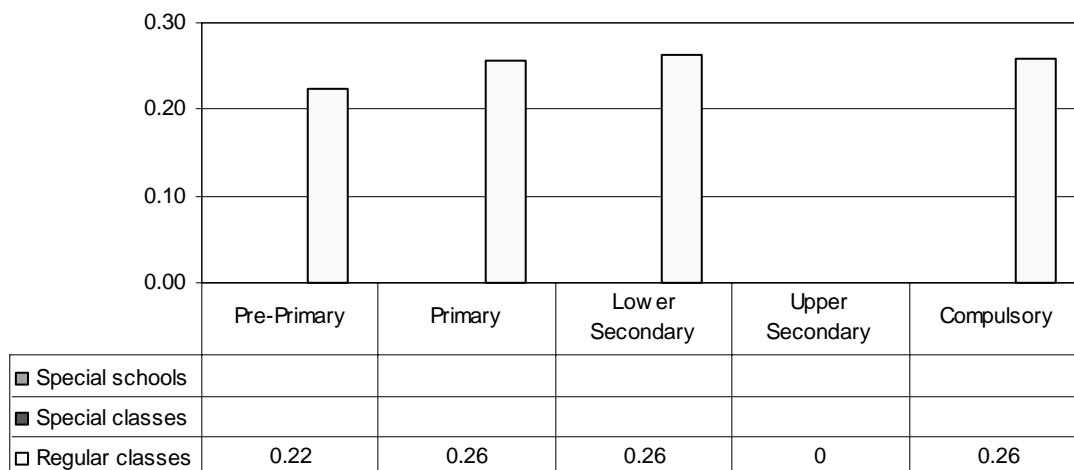


Note: Specials schools and special classes data are not applicable.



Category 10 Cross-national Category C - Addressed to students whose parents are itinerant workers (temporary, circus, fairs).

**Proportion of itinerant students with addressed programmes by phases of education in special schools, special classes and regular classes**

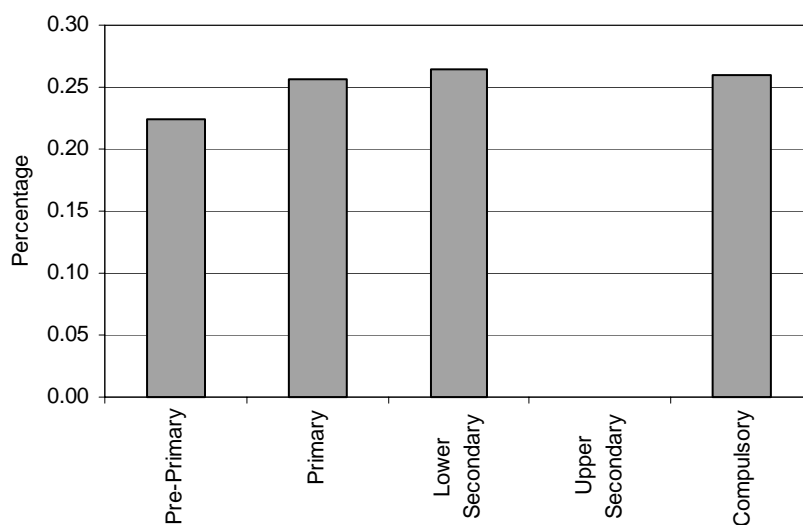


Note: Special schools and special classes data are not applicable.

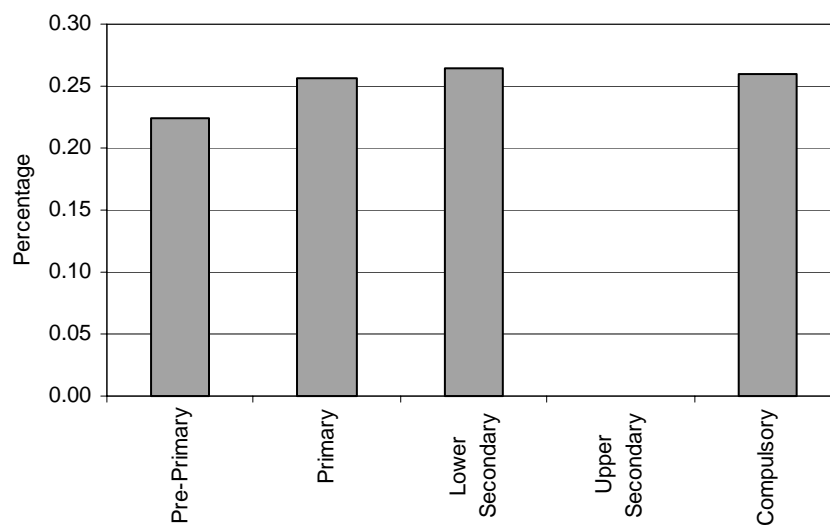
**Special Schools – Category 10. Programmes addressed to itinerant students**  
NOT APPLICABLE

**Special Classes – Category 10. Programmes addressed to itinerant students**  
NOT APPLICABLE

**Regular Classes – Category 10. Total percentage of itinerant students with addressed programmes falling within the resources definition, by phase of education**



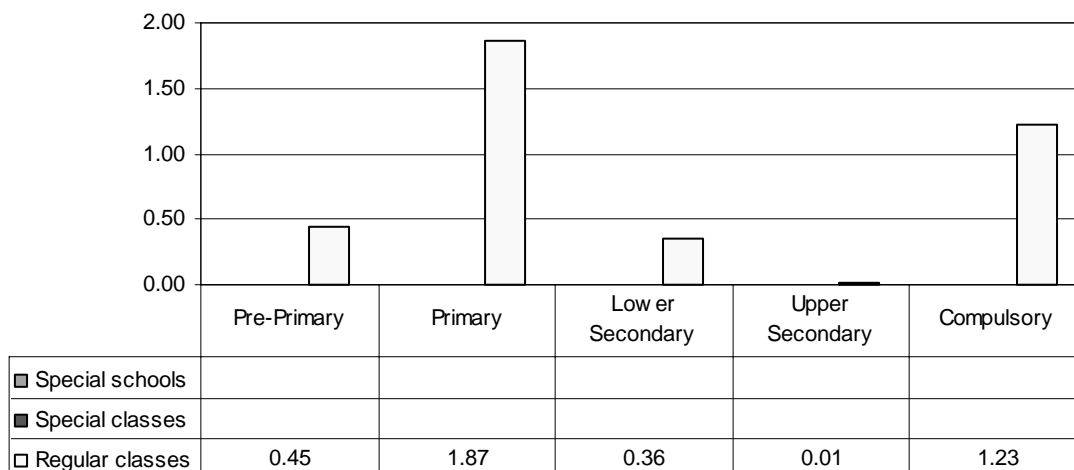
**Total – Category 10. Total percentage of itinerant students with addressed programmes falling within the resources definition**



Note: Specials schools and special classes data are not applicable.

Category 11 Cross-national Category B - Refers to temporary learning difficulties (dyslexia is included in this category).

**Proportion of students with learning difficulties by phases of education in special schools, special classes and regular classes**

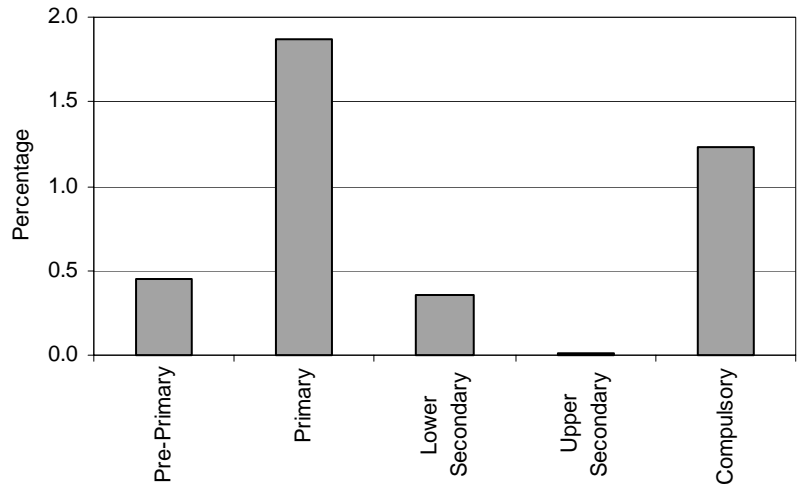


Note: Special schools and special classes data are not applicable.

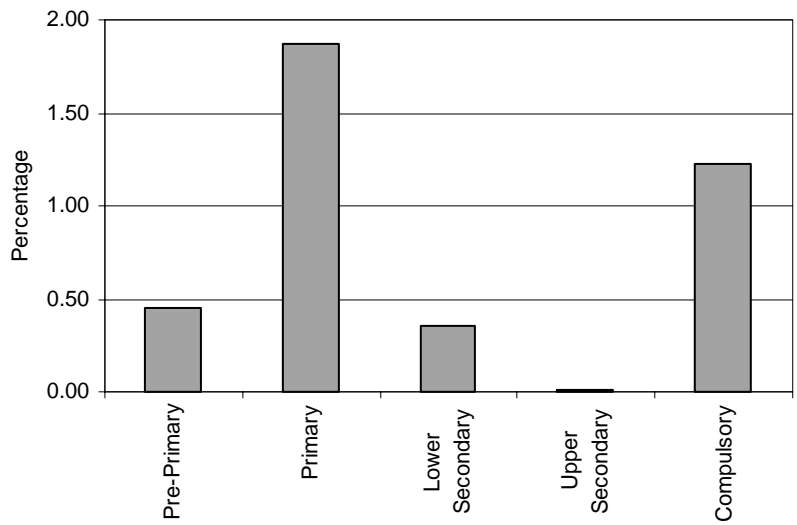
**Special Schools – Category 11. Learning difficulties**  
NOT APPLICABLE

**Special Classes – Category 11. Learning difficulties**  
NOT APPLICABLE

**Regular Classes – Category 11. Total percentage of students with learning difficulties falling within the resources definition, by phase of education**



**Total – Category 11. Total percentage of students with learning difficulties falling within the resources definition**



Note: Specials schools and special classes data are not applicable.