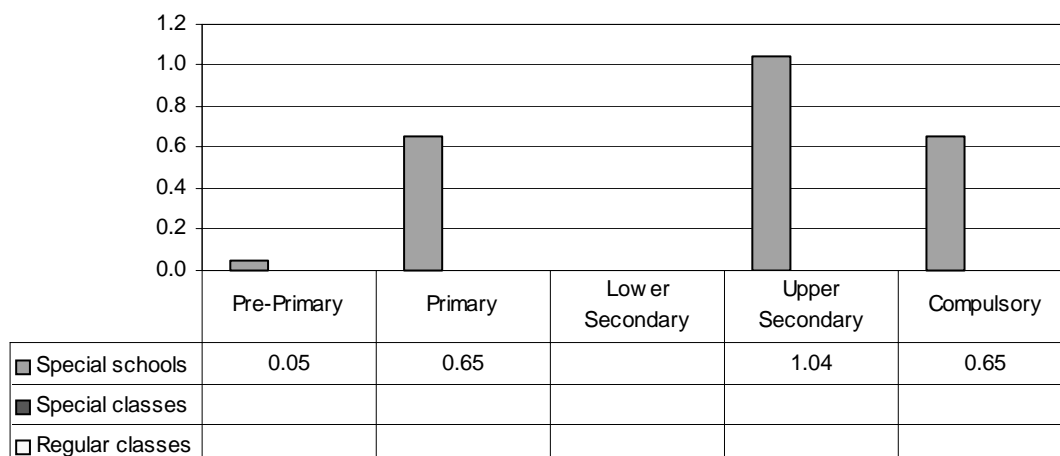


**POLAND**

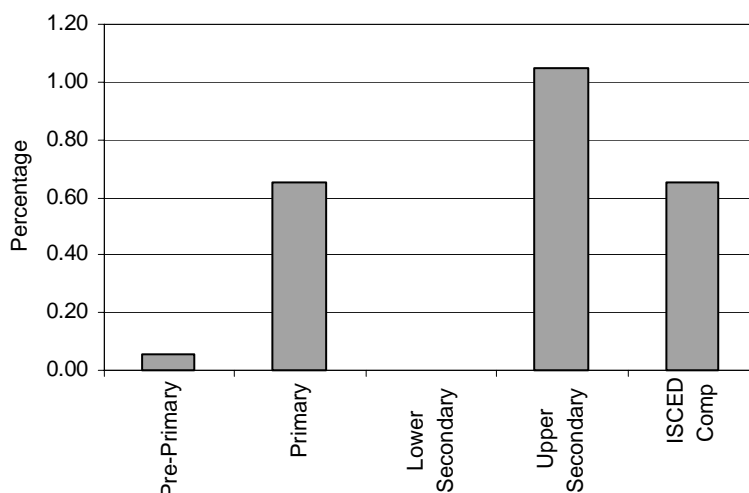
*Category 1 Cross-national Category A* - This category covers handicaps as regards intelligence, memory and thinking. It concerns persons (IQ between 51 and 67) capable of learning practical skills and how to read, as well as notions of arithmetic thanks to special education, and who can be taught a certain degree of socialisation.

**Proportion of students with light mental handicaps by phases of education in special schools, special classes and regular classes**



Note: Data for special schools only.  
Special schools data in lower secondary education are not applicable.

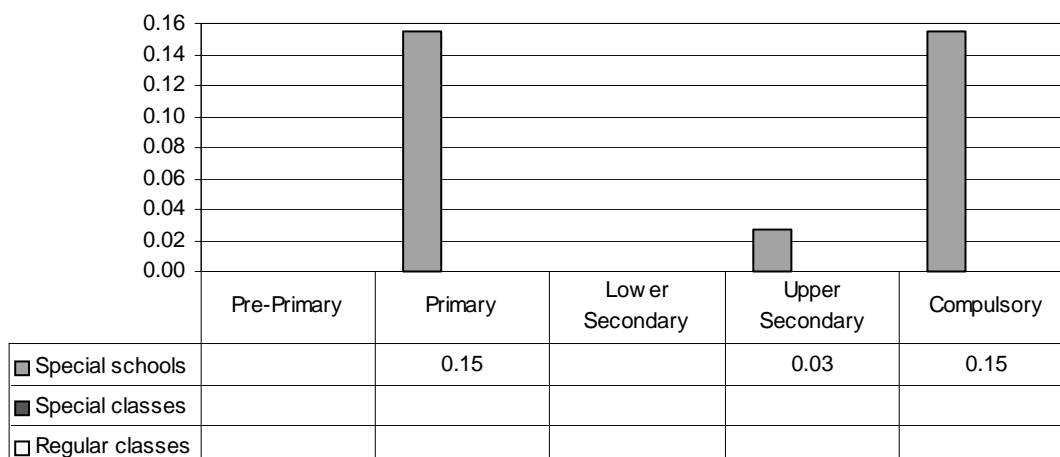
**Special Schools – Category 1. Total percentage of students with light mental handicaps falling within the resources definition, by phase of education**



Note: Special schools data in lower secondary education are not applicable.

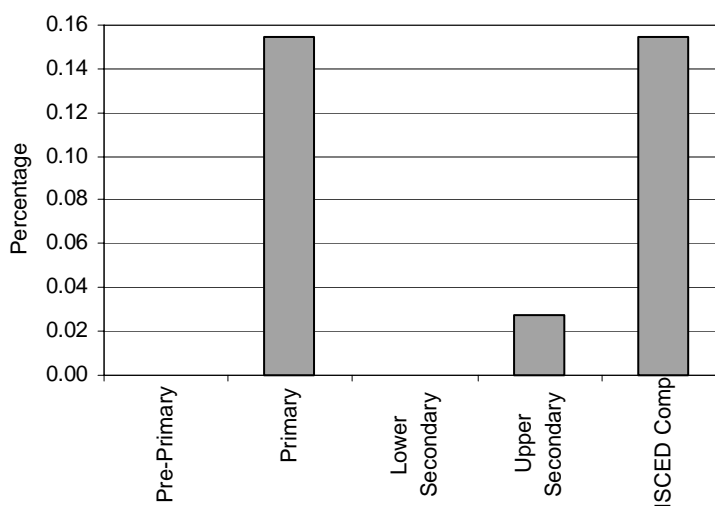
*Category 2 Cross-national Category A* - Multiple mental handicap - IQ between 36 and 51, concerns persons able to acquire simple notions of communication, hygiene and elementary safety as well as simple manual skills, but who are incapable of learning how to do arithmetic or read. Severe mental handicap – IQ between 20 and 35, concerns persons who can benefit from the systematic learning of simple gestures.

**Proportion of students with multiple & severe mental handicaps by phases of education in special schools, special classes and regular classes**



Note: Data for special schools only.  
 Special schools data in pre-primary education are missing.  
 Special schools data in lower secondary education are not applicable.

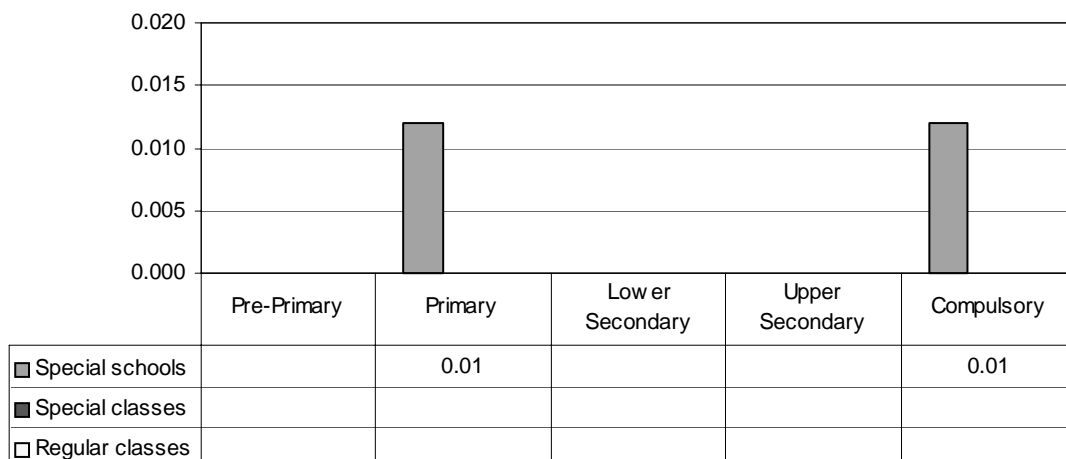
**Special Schools – Category 2. Total percentage of students with multiple and severe mental handicaps falling within the resources definition, by phase of education**



Note: Special schools data in pre-primary education are missing.  
 Special schools data in lower secondary education are not applicable.

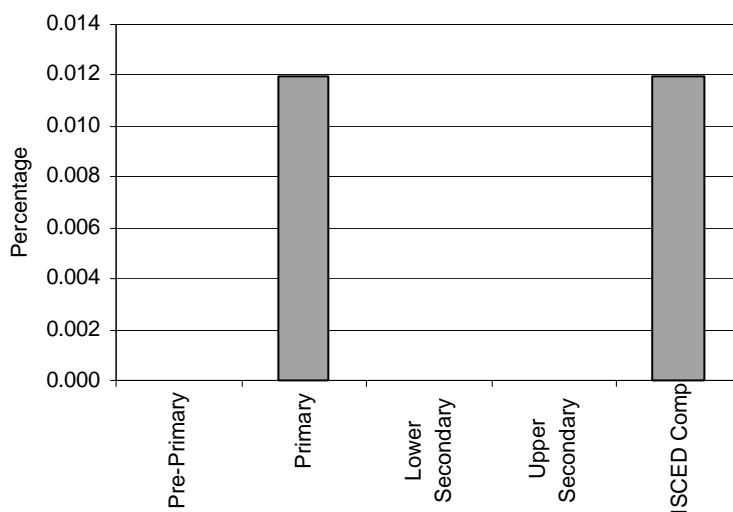
Category 3 Cross-national Category A - Profound mental handicap - IQ between 0 and 19, concerns persons who have many problems with learning of simple gestures.

**Proportion of students with profound mental handicap by phases of education in special schools, special classes and regular classes**



Note: Data for special schools only.  
 Special schools data in pre-primary education are missing.  
 Special schools data in lower secondary and upper secondary education are not applicable.

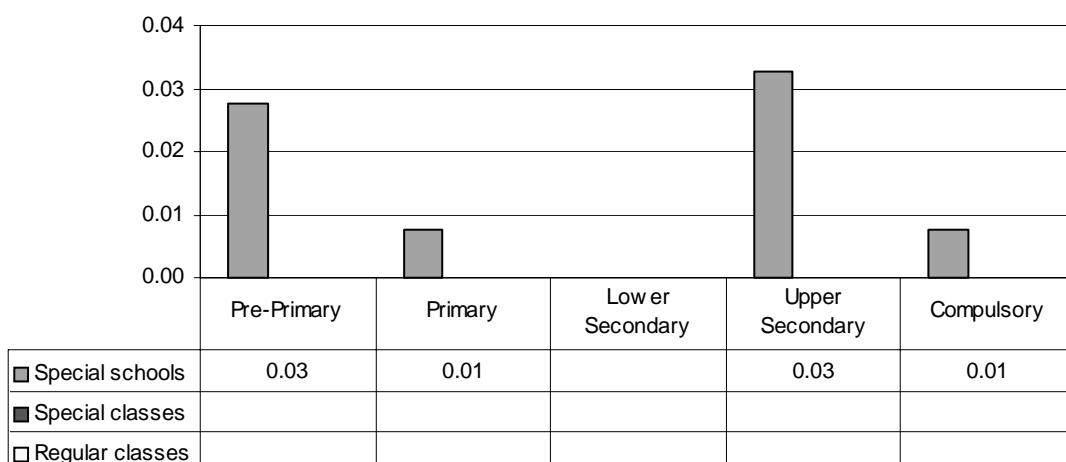
**Special Schools – Category 3. Total percentage of students with profound mental handicaps falling within the resources definition, by phase of education**



Note: Special schools data in pre-primary education are missing.  
 Special schools data in lower secondary and upper secondary education are not applicable.

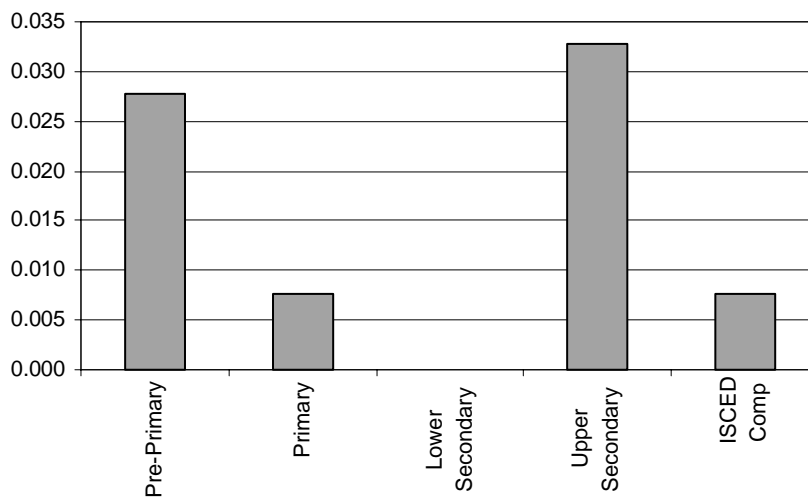
Category 4 Cross-national Category A - Blind - total lack of sight. Acuity of sight on level 0.00 diopter, or acuity of sight no larger than 0.00 diopter, limited field of vision no wider than 20 degrees, regardless of acuity of sight.

**Proportion of students who are blind by phases of education in special schools, special classes and regular classes**



Note: Data for special schools only.  
Special schools data in lower secondary education are not applicable.

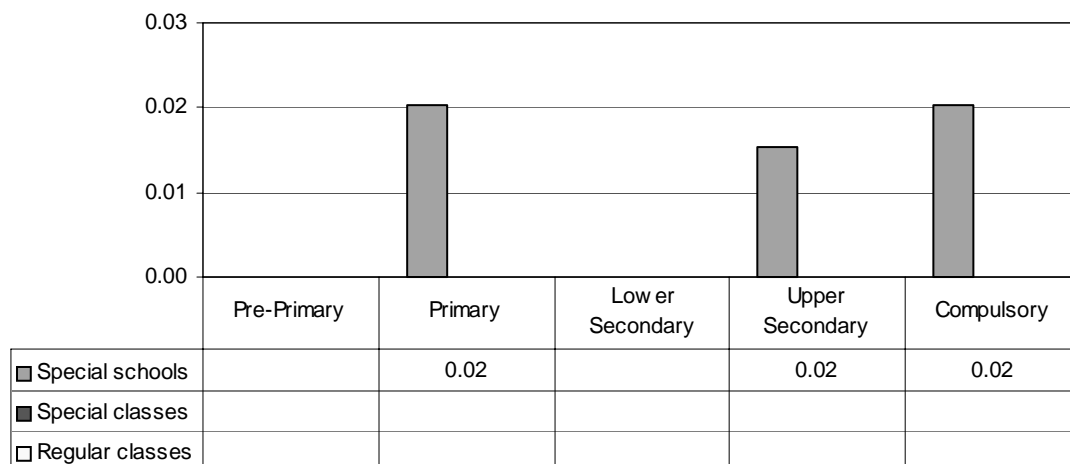
**Special Schools – Category 4. Total percentage of students who are blind falling within the resources definition, by phase of education**



Note: Special schools data in lower secondary education are not applicable.

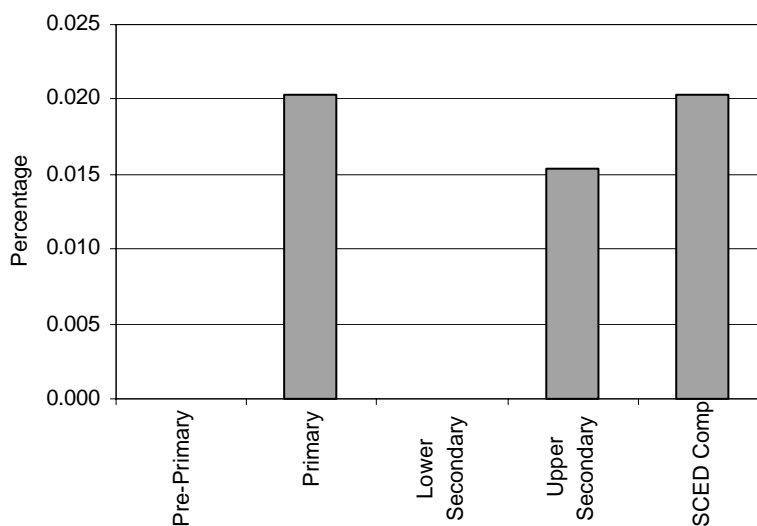
Category 5 Cross-national Category A - Acuity of sight between 0.05 and 0.3 diopter; field of vision limitation to 20 degrees, regardless of acuity of sight (acuity of sight can be better than 0.3 diopter).

**Proportion of students who are partially sighted by phases of education in special schools, special classes and regular classes**



Note: Data for special schools only.  
 Special schools data in pre-primary education are missing.  
 Special schools data in lower secondary education are not applicable.

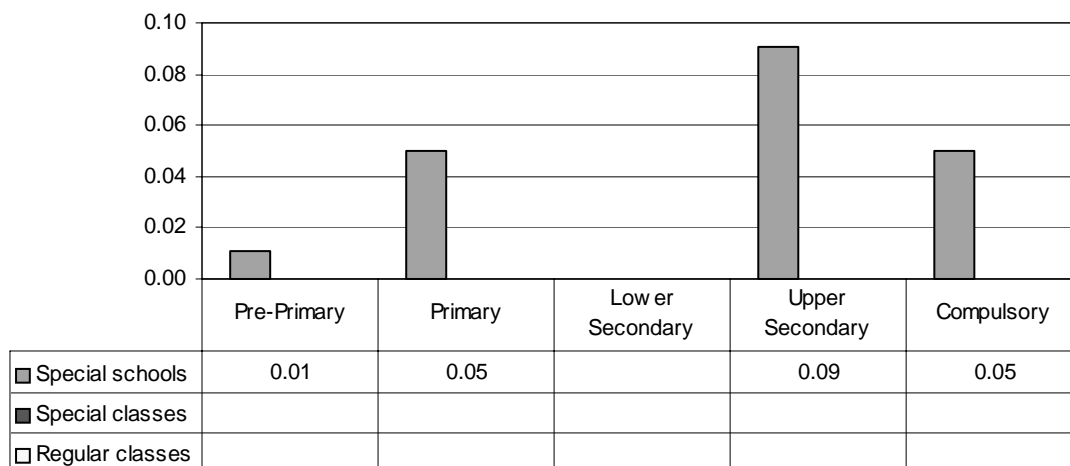
**Special Schools – Category 5. Total percentage of students who are partially sighted falling within the resources definition, by phase of education**



Note: Special schools data in pre-primary education are missing.  
 Special schools data in lower secondary education are not applicable.

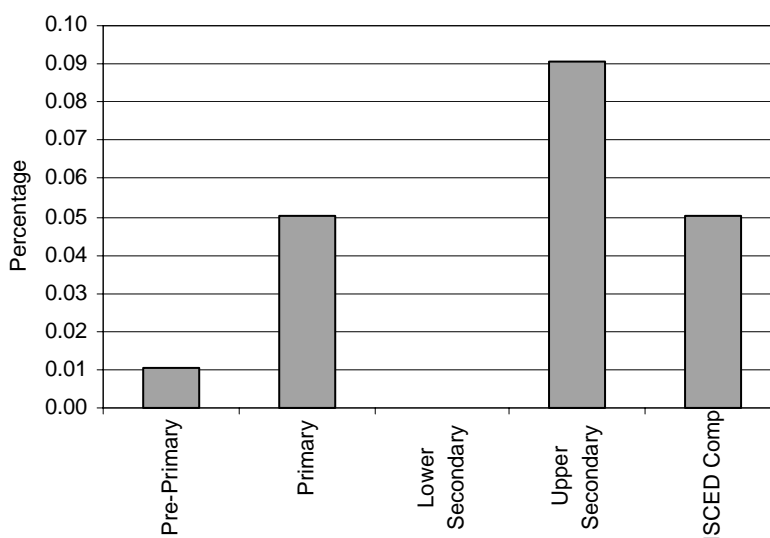
Category 6 Cross-national Category A - Lack perception of sounds or loss of hearing between 80 and 90 dB; the most raised voice cannot be heard on various frequencies.

**Proportion of students who are deaf by phases of education in special schools, special classes and regular classes**



Note: Data for special schools only.  
Special schools data in lower secondary education are not applicable.

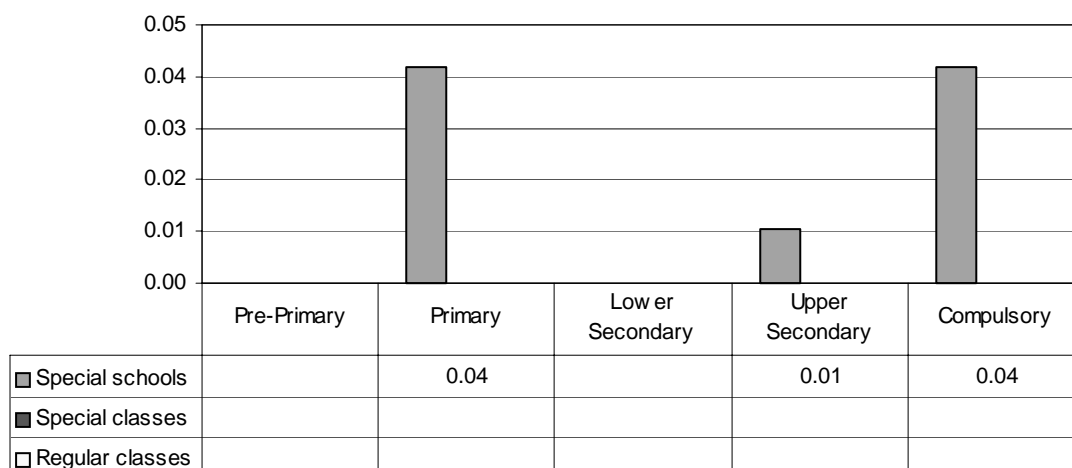
**Special Schools – Category 6. Total percentage of students who are deaf falling within the resources definition, by phase of education**



Note: Special schools data in lower secondary education are not applicable.

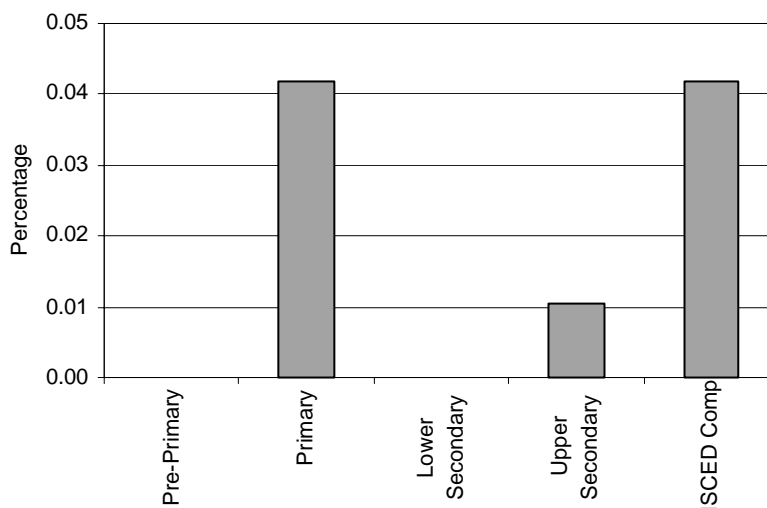
Category 7 Cross-national Category A - Loss of hearing between 40 and 80 dB (students can use an apparatus for test of hearing systematically; students have to use a hearing aid).

**Proportion of students with partial hearing by phases of education in special schools, special classes and regular classes**



Note: Data for special schools only.  
 Special schools data in pre-primary education are missing.  
 Special schools data in lower secondary education are not applicable.

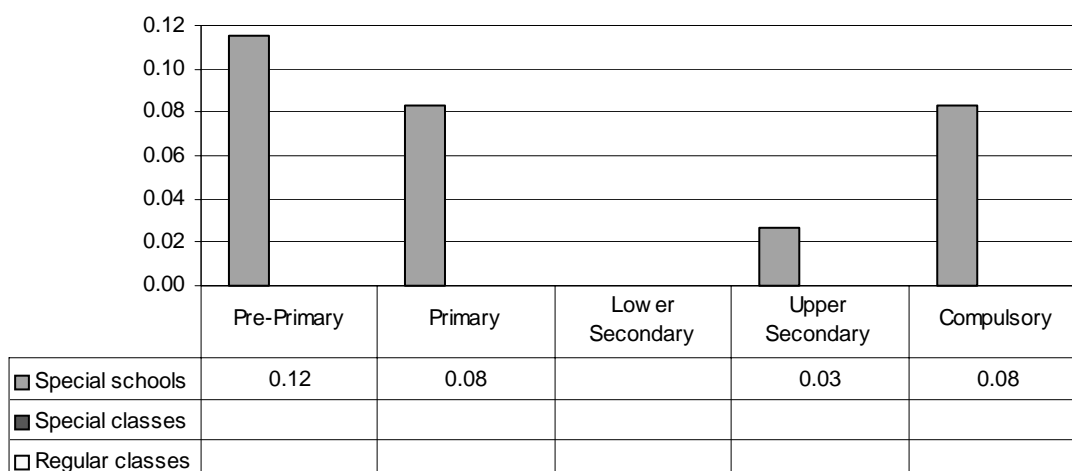
**Special Schools – Category 7. Total percentage of students with partial hearing falling within the resources definition, by phase of education**



Note: Special schools data in pre-primary education are missing.  
 Special schools data in lower secondary education are not applicable.

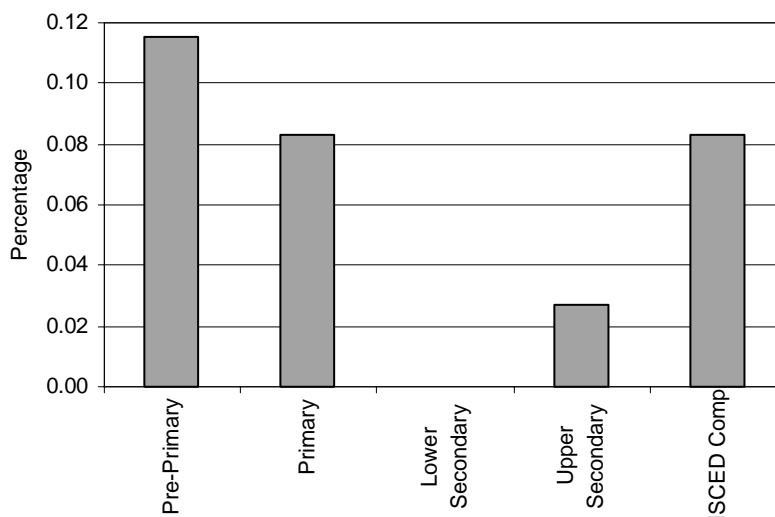
*Category 8 Cross-national Category A* - Refers to students who suffer from various psychosomatic illnesses. It is the reason of long-lasting hospital, health resort or home treatment. Schools are organised in hospitals, health resorts. Organisation and range of classes is adjusted to abilities of sick children.

**Proportion of students who are chronically sick by phases of education in special schools, special classes and regular classes**



Note: Data for special schools only.  
Special schools data in lower secondary education are not applicable.

**Special Schools – Category 8. Total percentage of students who are chronically sick falling within the resources definition, by phase of education**

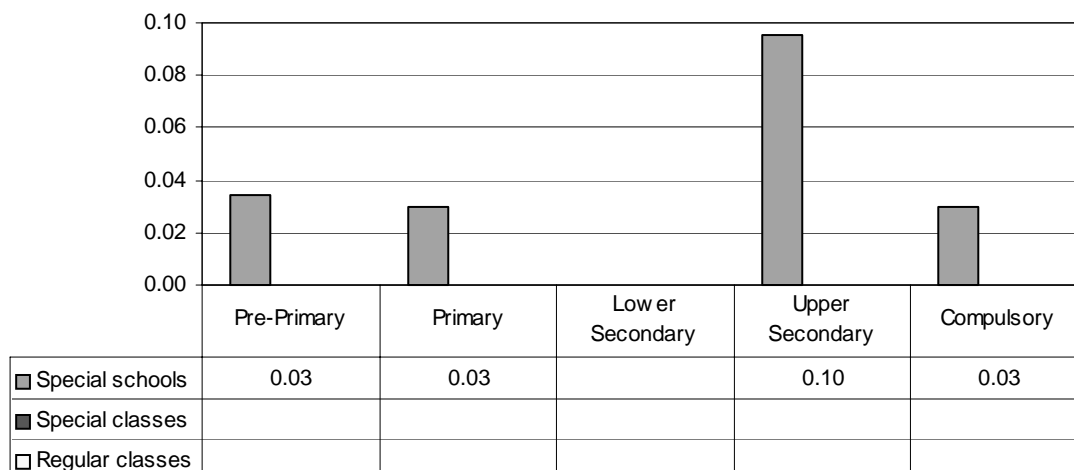


Note: Special schools data in lower secondary education are not applicable.



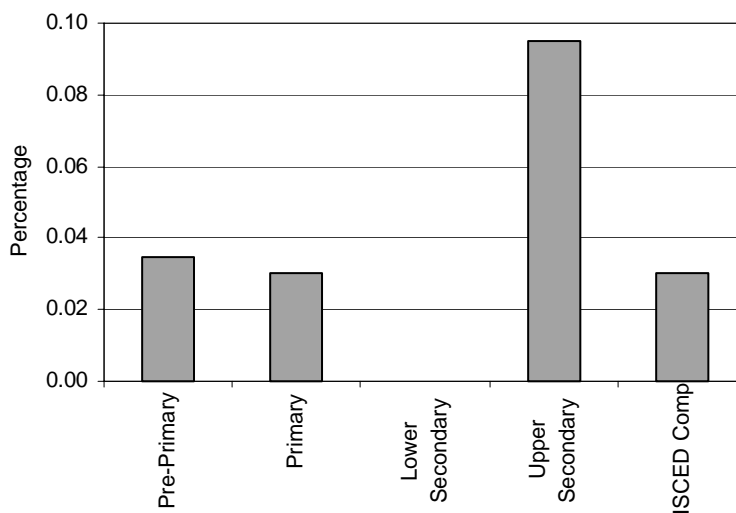
Category 9 Cross-national Category A - Refers to students with various forms of motor dysfunction based on impairment of organs of movement. Students have to use: artificial limb, wheelchair, balcony or others.

**Proportion of students with motion handicaps by phases of education in special schools, special classes and regular classes**



Note: Data for special schools only.  
Special schools data in lower secondary education are not applicable.

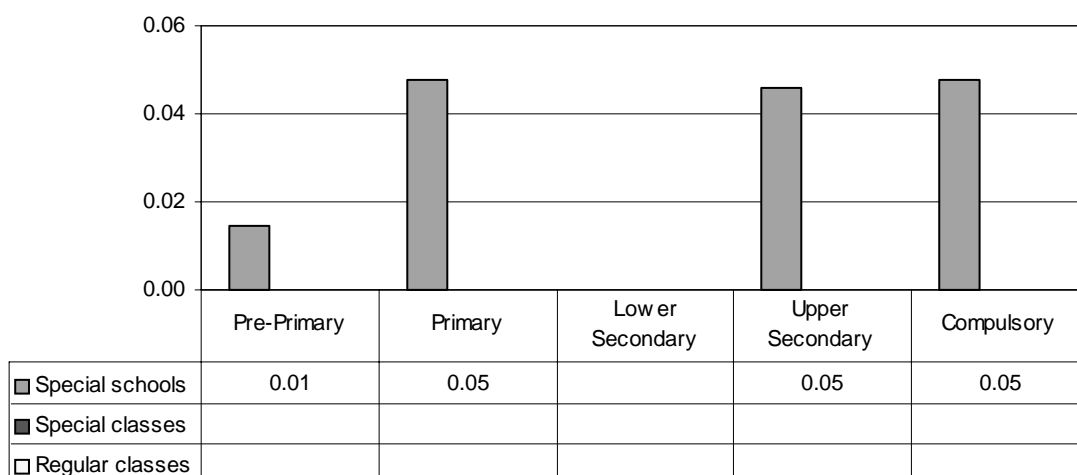
**Special Schools – Category 9. Total percentage of students with motion handicaps falling within the resources definition, by phase of education**



Note: Special schools data in lower secondary education are not applicable.

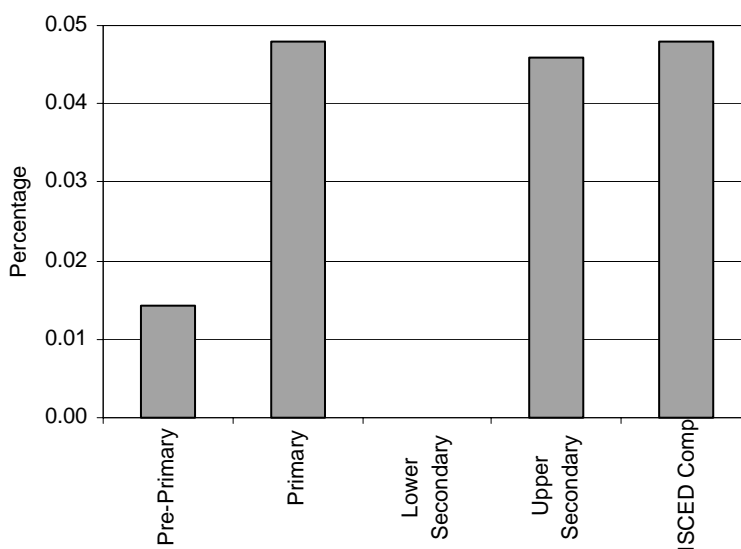
*Category 10 Cross-national Category C* - Refers to students who do not accept current social norm. It manifests social negative tendency in behaviour, inability to function in the group, disturbance of emotional process.

**Proportion of students with social disadvantages, behaviour difficulties, danger of addiction by phases of education in special schools, special classes and regular classes**



Note: Data for special schools only.  
Special schools data in lower secondary education are not applicable.

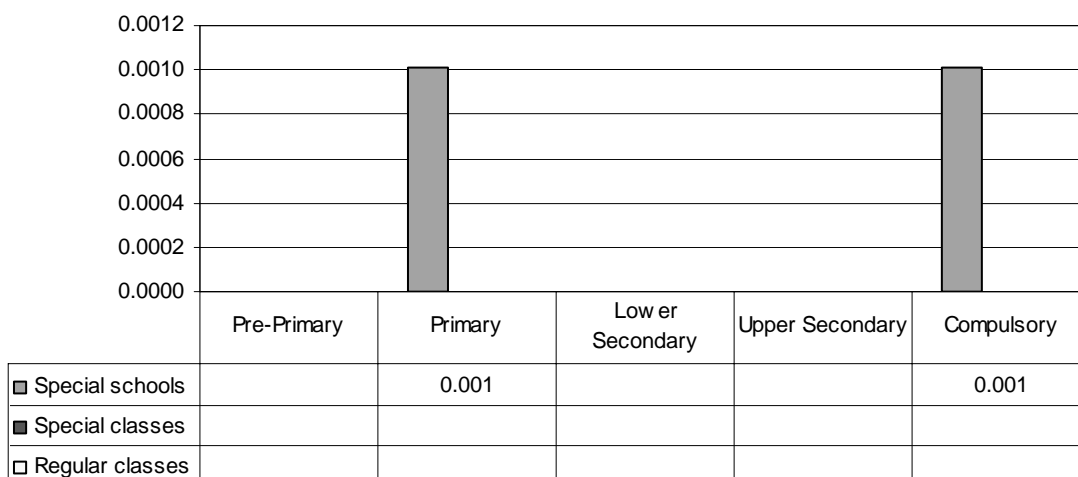
**Special Schools – Category 10. Total percentage of students with social disadvantages, behaviour difficulties, danger of addiction falling within the resources definition, by phase of education**



Note: Special schools data in lower secondary education are not applicable.

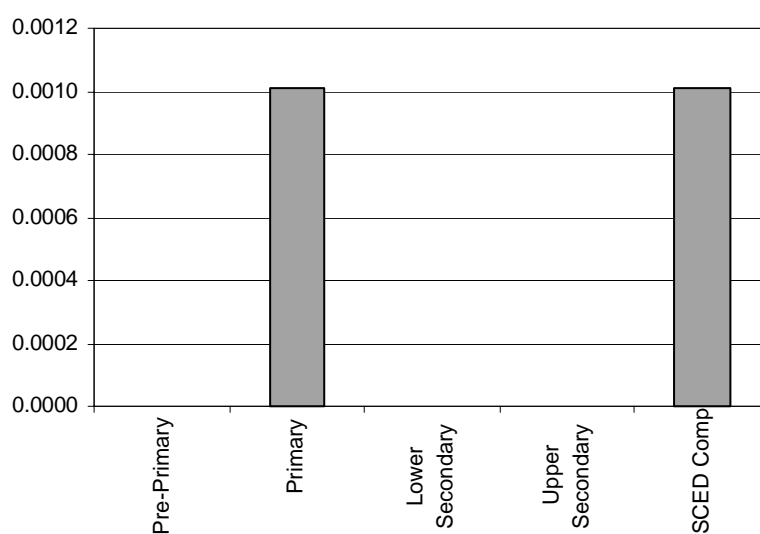
*Category 11 Cross-national Category A* - Refers to students with non-specific developmental disturbance since birth. Autistic students present psychomotor problems, which prevent them from being included in the social environment and the regular educational system. Developmental disability significantly affecting verbal and non-verbal communication and social interaction. Other characteristics often associated with autism are engagement in repetitive activities and stereotyped movements, resistance to environmental change or change in daily routines.

**Proportion of students with autism by phases of education in special schools, special classes and regular classes**



Note: Data for special schools only.  
 Special schools data in pre-primary and upper secondary education are missing.  
 Special schools data in lower secondary education are not applicable.

**Special Schools – Category 11. Total percentage of students with autism falling within the resources definition, by phase of education**



Note: Special schools data in pre-primary and upper secondary education are missing.  
 Special schools data in lower secondary education are not applicable.

