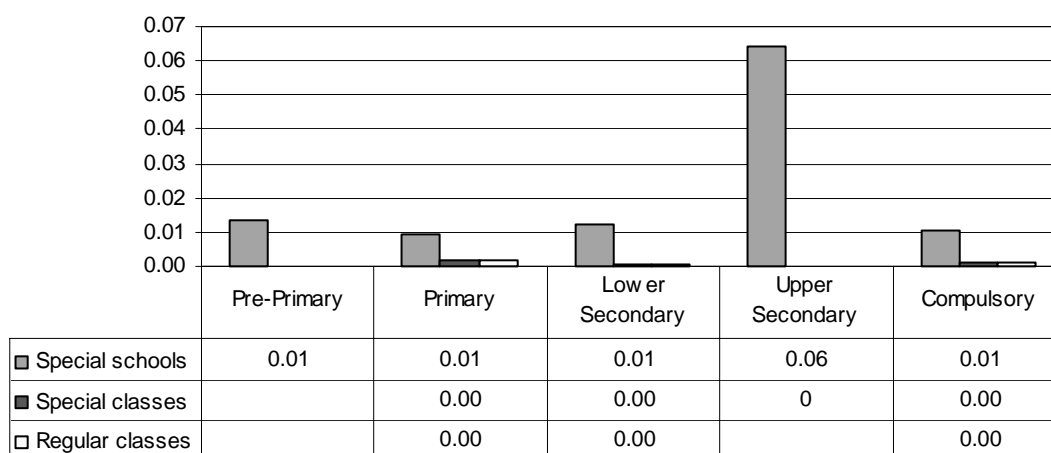


JAPAN

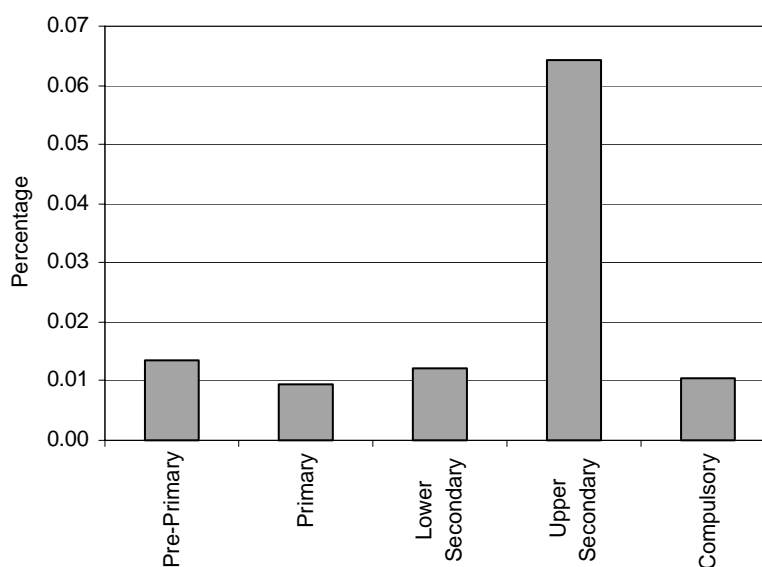
Category 1 Cross-national Category A - Those with corrected visual acuity of less than 0.1 for both eyes. Those with corrected visual acuity of over 0.1 but less than 0.3 and who require education through Braille or who will require such as education in the future. Impairment of visual functions other than visual acuity such as contraction of visual field and who require education through Braille or who will require such as education in the future.

Proportion of students who are blind & partially sighted by phases of education in special schools, special classes and regular classes

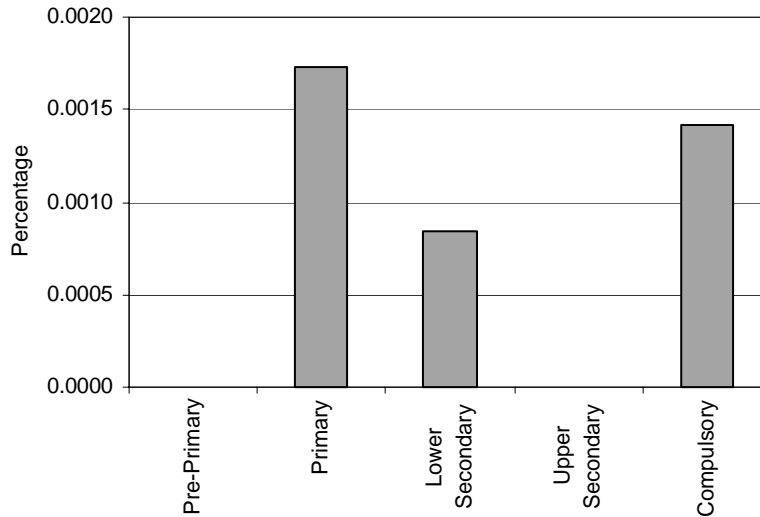


Note: Special classes data in pre-primary education are not applicable.
Regular classes data in pre-primary and upper secondary education are not applicable.

Special schools - Category 1. Total percentage of students who are blind & partially sighted falling within the resources definition, by phase of education

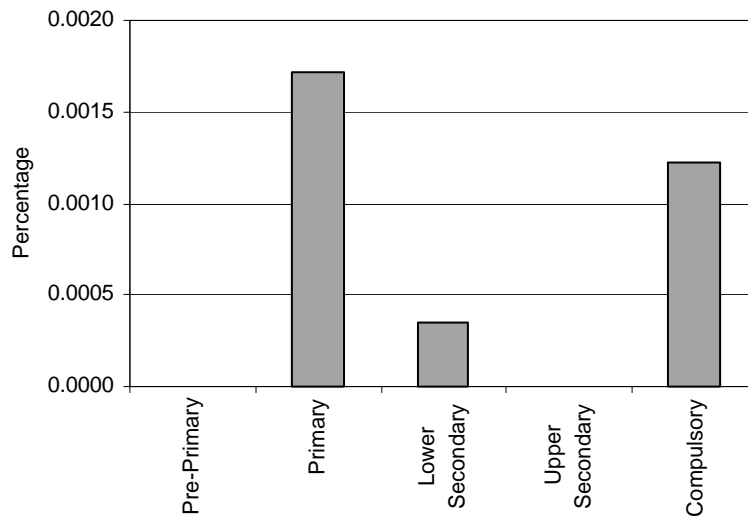


Special Classes - Category 1. Total percentage of students who are blind & partially sighted falling within the resources definition, by phase of education



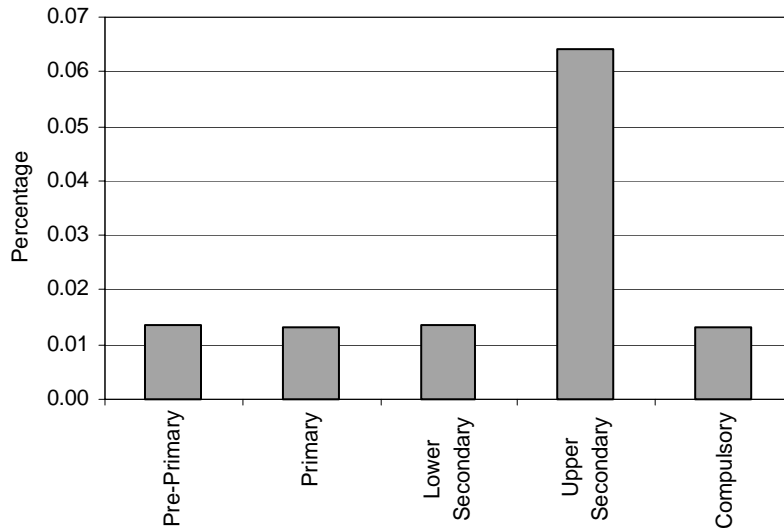
Note: Special classes data in pre-primary education are not applicable.

Regular classes - Category 1. Total percentage of students who are blind & partially sighted falling within the resources definition, by phase of education



Note: Regular classes data in pre-primary and upper secondary education are not applicable.

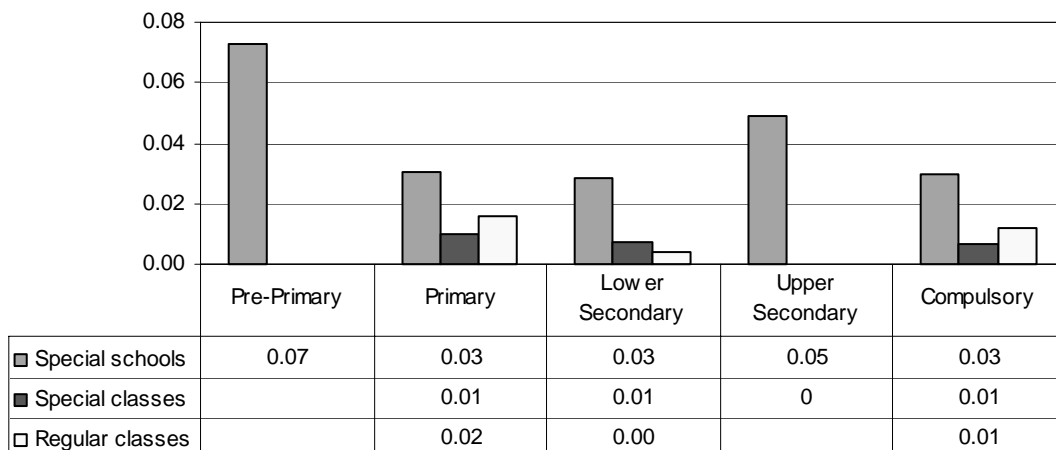
Total - Category 1. Total percentage of students who are blind & partially sighted falling within the resources definition



Note: Special classes data in pre-primary education are not applicable.
Regular classes data in pre-primary and upper secondary education are not applicable.

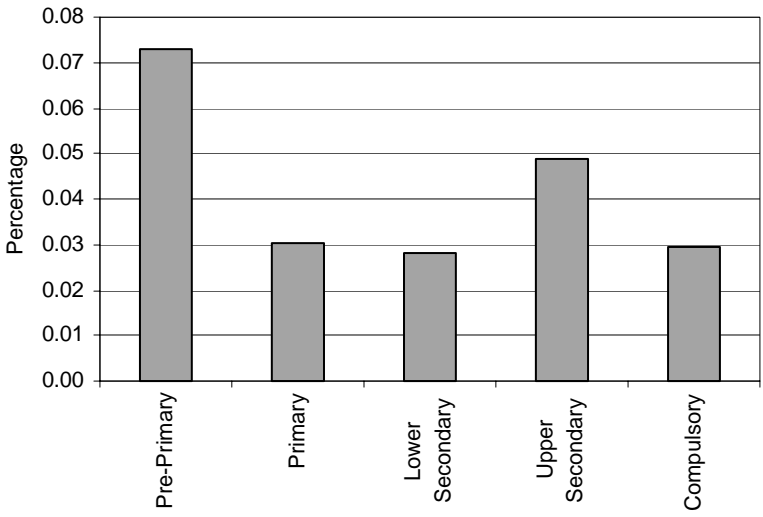
Category 2 Cross-national Category A - Those with a hearing level of more than 100 decibels for both ears. Those with a hearing level of more than 60 decibels but less than 100 decibels and who find it either impossible or extremely difficult to comprehend normal speech even with a hearing aid.

Proportion of students who are deaf and hard of hearing by phases of education in special schools, special classes and regular classes

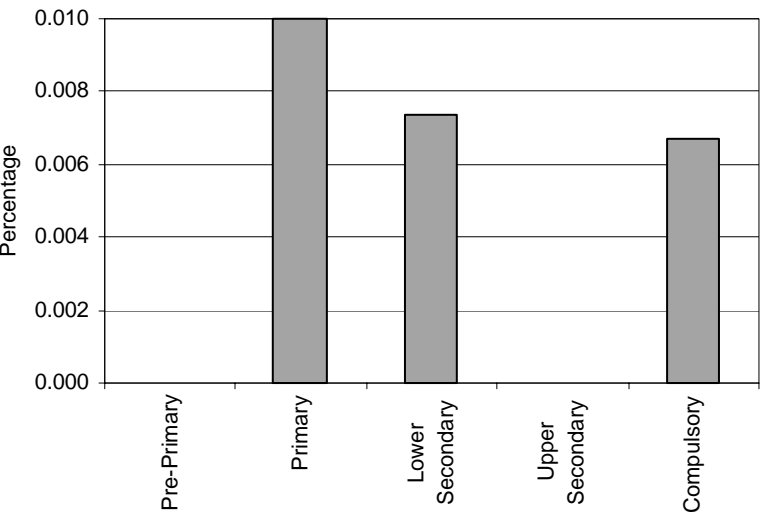


Note: Special classes data in pre-primary education are not applicable.
Regular classes data in pre-primary and upper secondary education are not applicable.

Special schools - Category 2. Total percentage of students who are deaf and hard of hearing falling within the resources definition, by phase of education

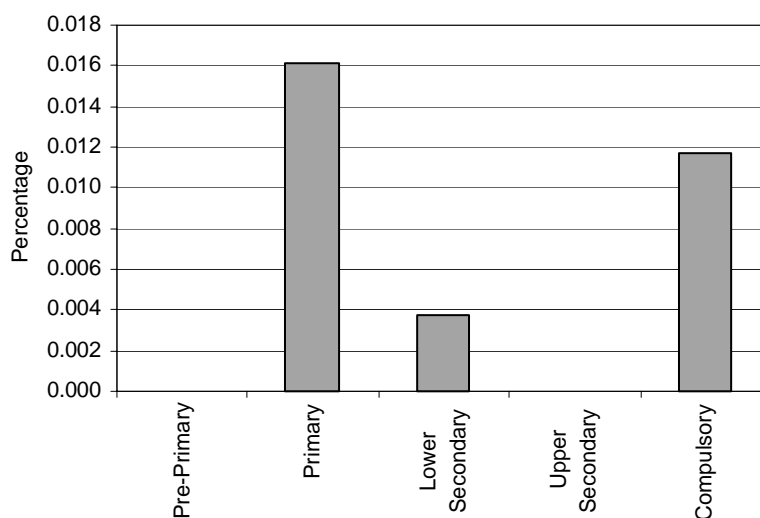


Special classes - Category 2. Total percentage of students who are deaf and hard of hearing falling within the resources definition, by phase of education



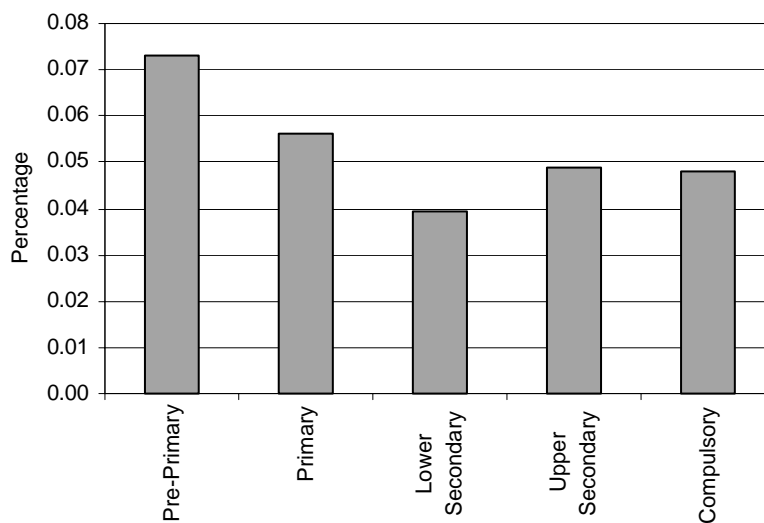
Note: Special classes data in pre-primary education are not applicable.

Regular classes - Category 2. Total percentage of students who are deaf and hard of hearing falling within the resources definition, by phase of education



Note: Regular classes data in pre-primary and upper secondary education are not applicable.

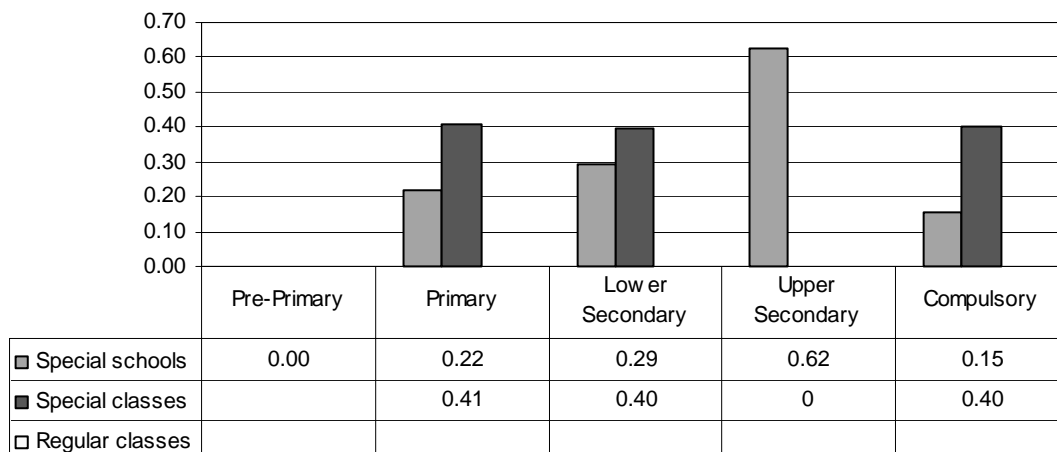
Total - Category 2. Total percentage of students who are deaf and hard of hearing falling within the resources definition



Note: Special classes data in pre-primary education are not applicable.
Regular classes data in pre-primary and upper secondary education are not applicable.

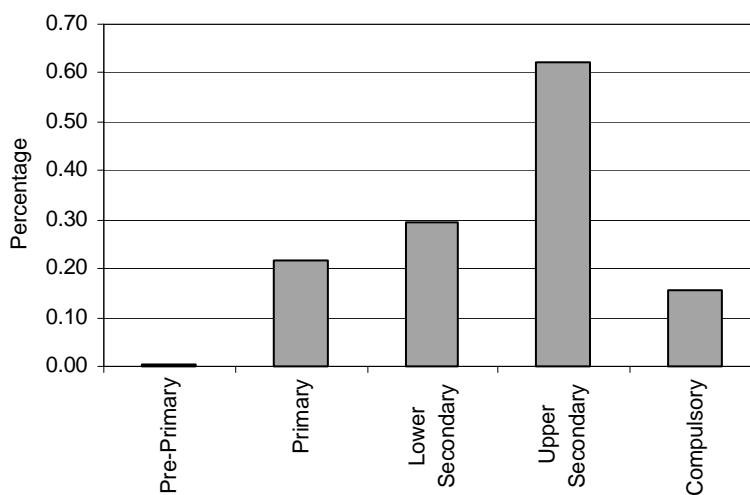
Category 3 Cross-national Category A - Severe - Moderate - Mild and those who particularly lack social adaptability.

Proportion of students with intellectual disabilities by phases of education in special schools, special classes and regular classes

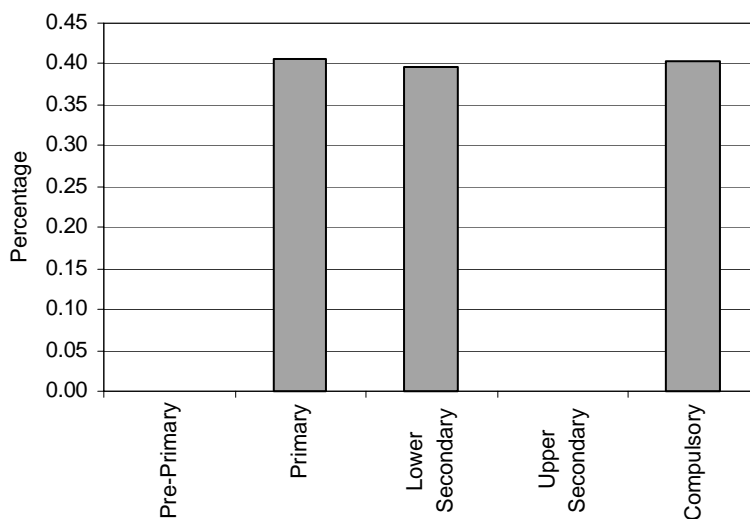


Note: Special classes data in pre-primary education are not applicable.
Regular classes data are not applicable.

Special schools - Category 3. Total percentage of students with intellectual disabilities falling within the resources definition, by phase of education



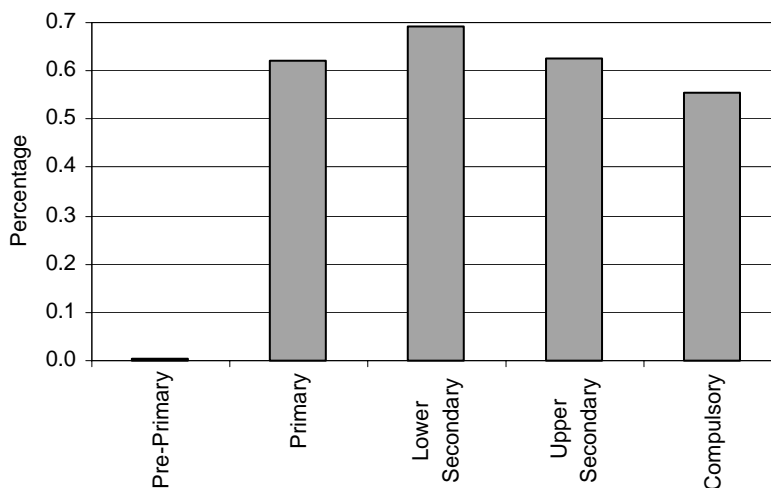
Special Classes - Category 3. Total percentage of students with intellectual disabilities falling within the resources definition, by phase of education



Note: Special classes data in pre-primary education are not applicable.

Regular Classes – Category 3. Intellectual disabilities
NOT APPLICABLE

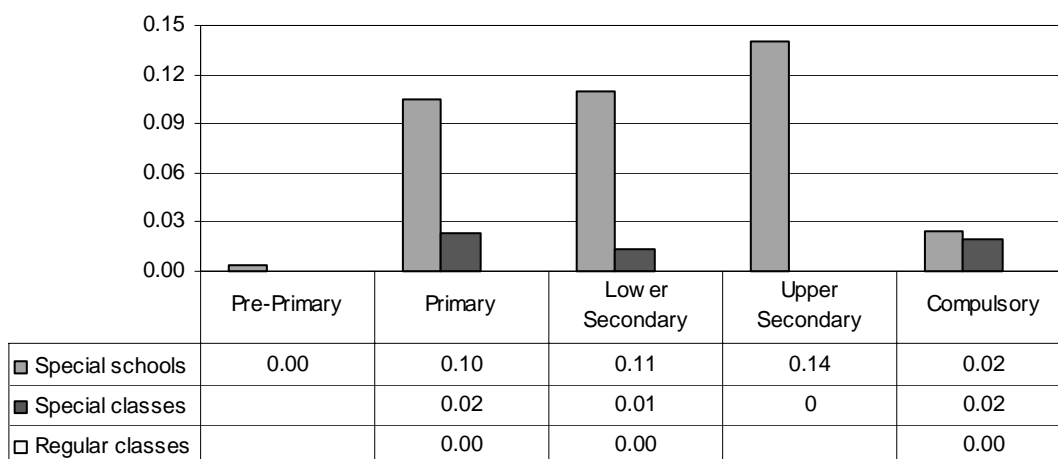
Total - Category 3. Total percentage of students with intellectual disabilities falling within the resources definition



Note: Special classes data in pre-primary education are not applicable.
Regular classes data are not applicable.

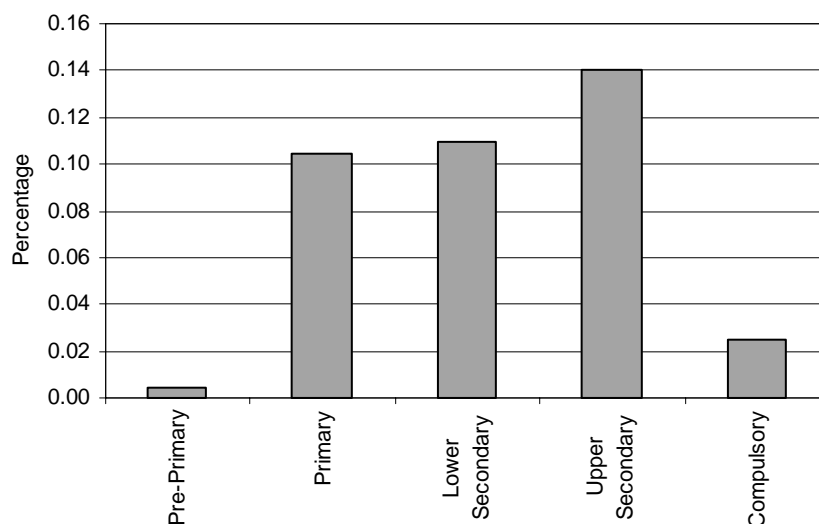
Category 4 Cross-national Category A - Those who find it impossible or extremely difficult to maintain their posture, write, or walk, and those with similar disabilities. Those with milder disabilities and who require medical observation and guidance for more than six months.

Proportion of students with physical disabilities by phases of education in special schools, special classes and regular classes

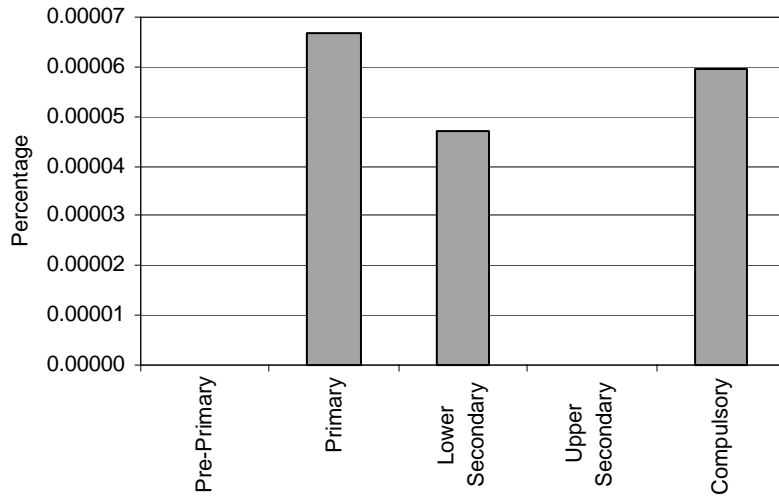


Note: Special classes data in pre-primary education are not applicable.
Regular classes data in pre-primary and upper secondary education are not applicable.

Special schools - Category 4. Total percentage of students with physical disabilities falling within the resources definition, by phase of education

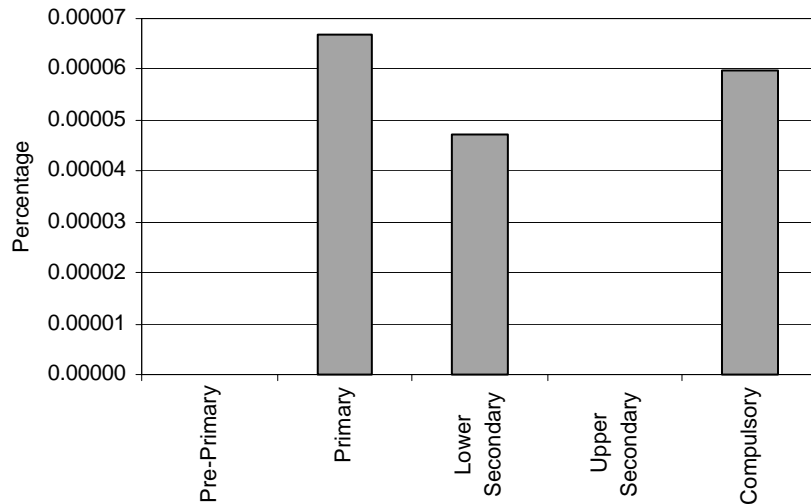


Special Classes - Category 4. Total percentage of students with physical disabilities falling within the resources definition, by phase of education



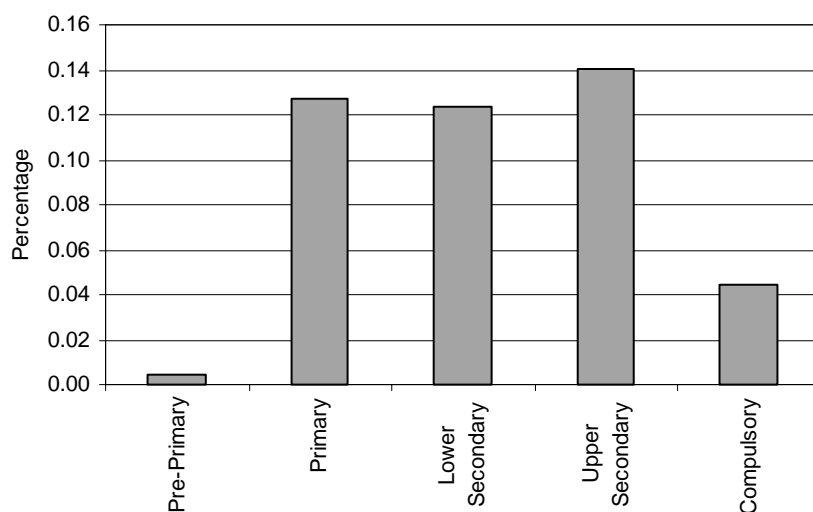
Note: Special classes data in pre-primary education are not applicable.

Regular classes - Category 4. Total percentage of students with physical disabilities falling within the resources definition, by phase of education



Note: Regular classes data in pre-primary and upper secondary education are not applicable.

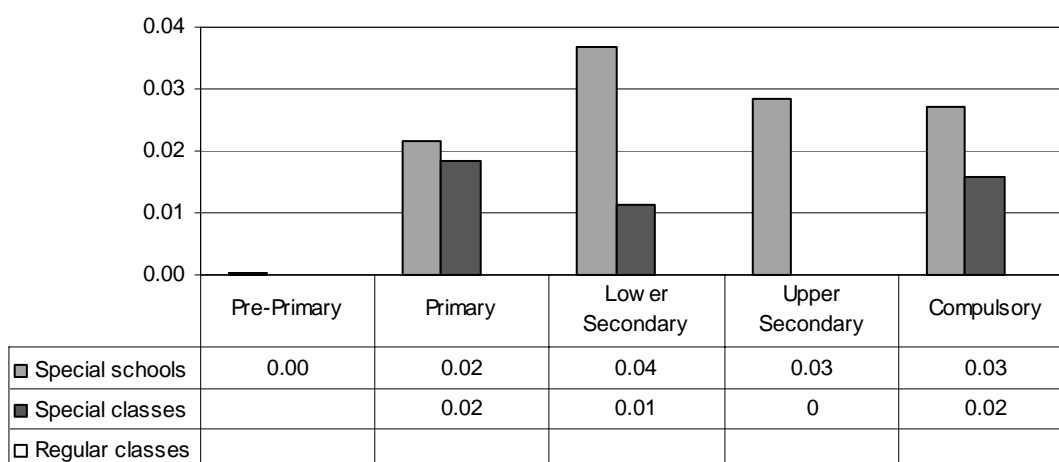
Total - Category 4. Total percentage of students with physical disabilities falling within the resources definition



Note: Special classes data in pre-primary education are not applicable.
Regular classes data in pre-primary and upper secondary education are not applicable.

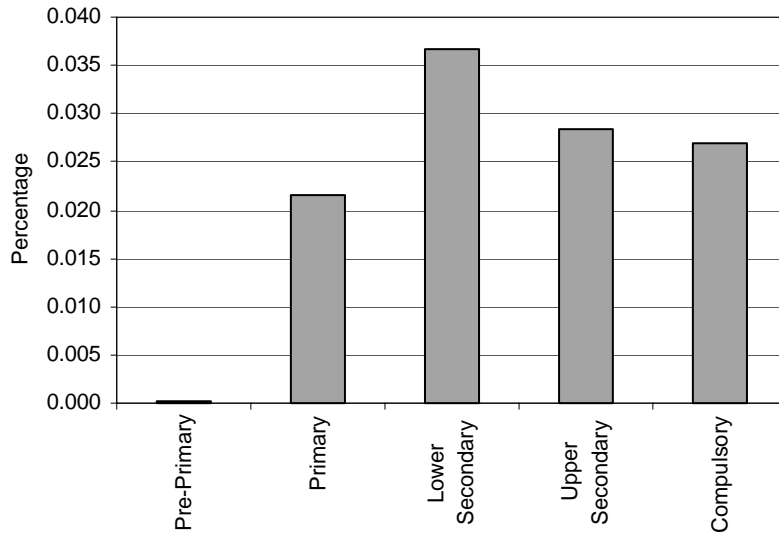
Category 5 Cross-national Category A - Those with a chronic disease of heart, chest or kidney and who require more than six months of medical care or restricted living. Those who are physically weak and require more than six months of restricted living.

Proportion of students with health impairments by phases of education in special schools, special classes and regular classes

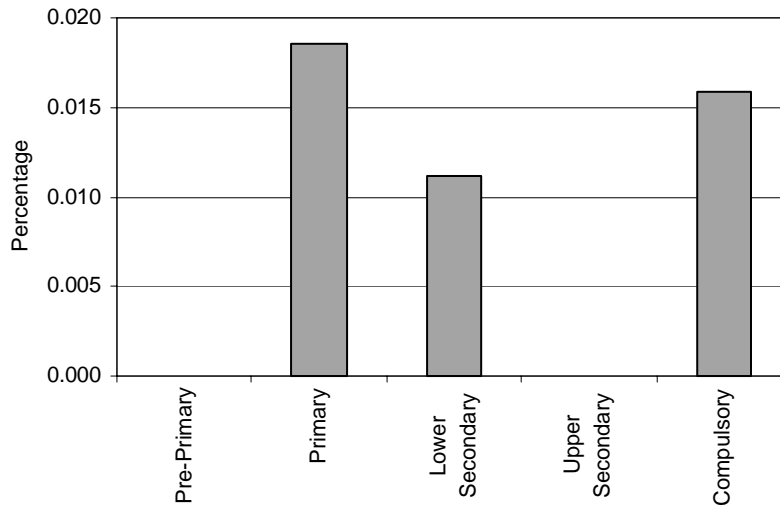


Note: Special classes data in pre-primary education are not applicable.
Regular classes data are missing.

Special schools - Category 5. Total percentage of students with health impairments falling within the resources definition, by phase of education



Special Classes - Category 5. Total percentage of students with health impairments falling within the resources definition, by phase of education

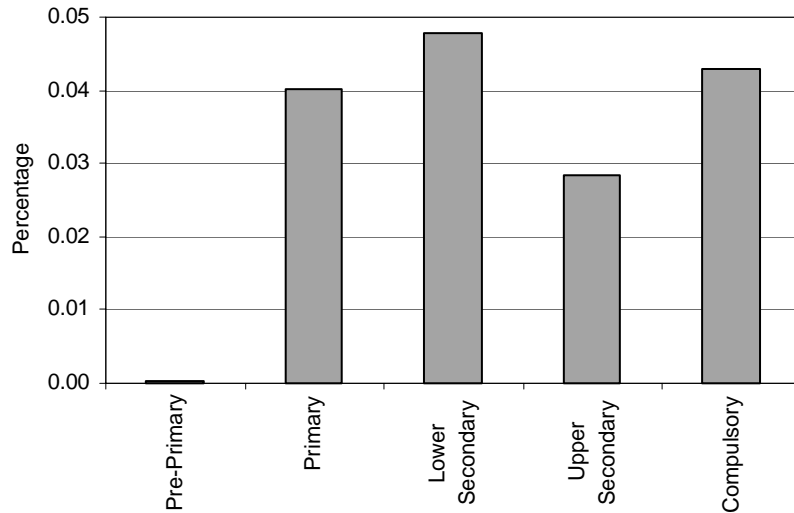


Note: Special classes data in pre-primary education are not applicable.

Regular Classes – Category 5. Health impaired

MISSING

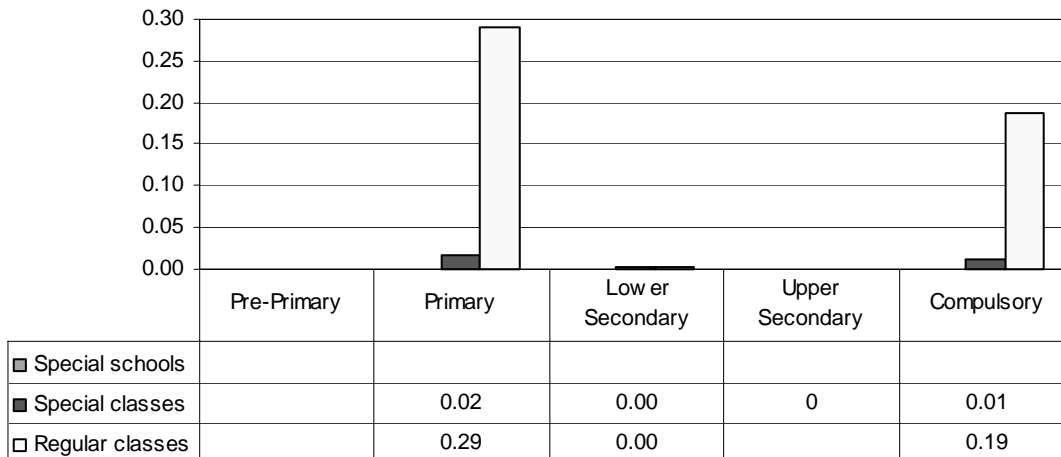
Total - Category 5. Total percentage of students with health impairments falling within the resources definition



Note: Special classes data in pre-primary education are not applicable.
Regular classes data are missing.

Category 6 Cross-national Category A - Those with speech impairment other than with speech impairment resulting from deafness, hard of hearing, cerebral palsy and intellectual disabilities.

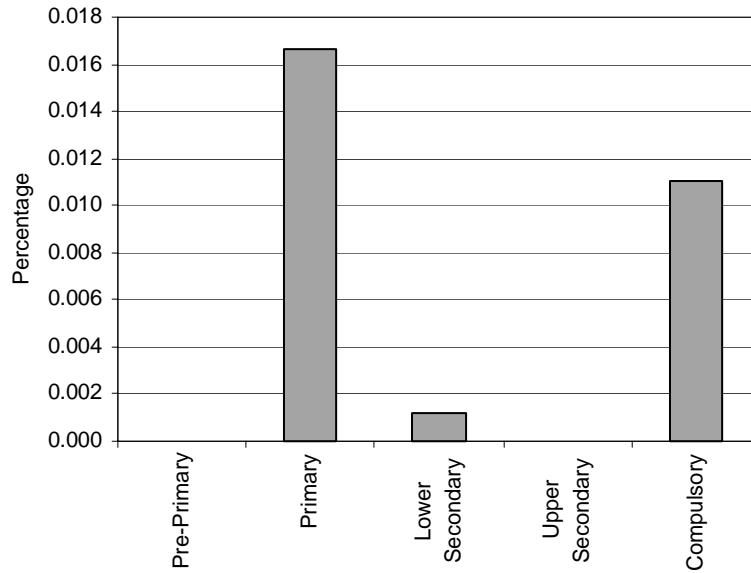
Proportion of students with speech impairments by phases of education in special schools, special classes and regular classes



Note: Special schools data are not applicable.
Special classes data in pre-primary education are not applicable.
Regular classes data in pre-primary and upper secondary education are not applicable.

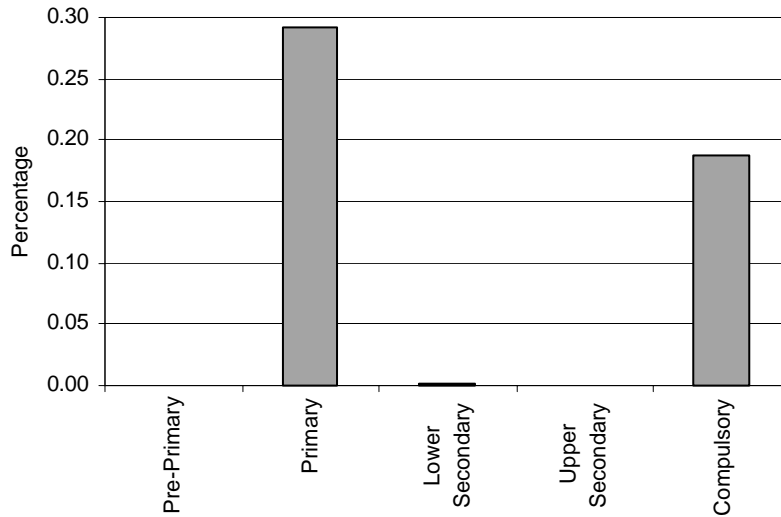
Special Schools – Category 6. Speech impaired
NOT APPLICABLE

Special Classes - Category 6. Total percentage of students with speech impairments falling within the resources definition, by phase of education



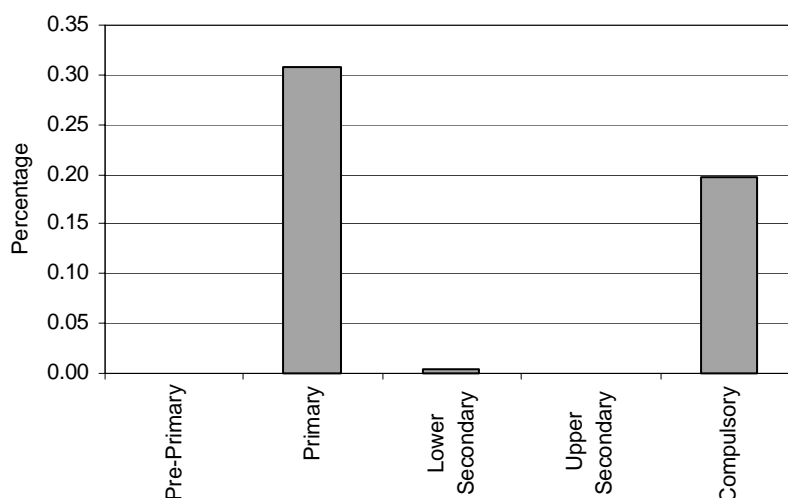
Note: Special classes data in pre-primary education are not applicable.

Regular classes - Category 6. Total percentage of students with speech impairments falling within the resources definition, by phase of education



Note: Regular classes data in pre-primary and upper secondary education are not applicable.

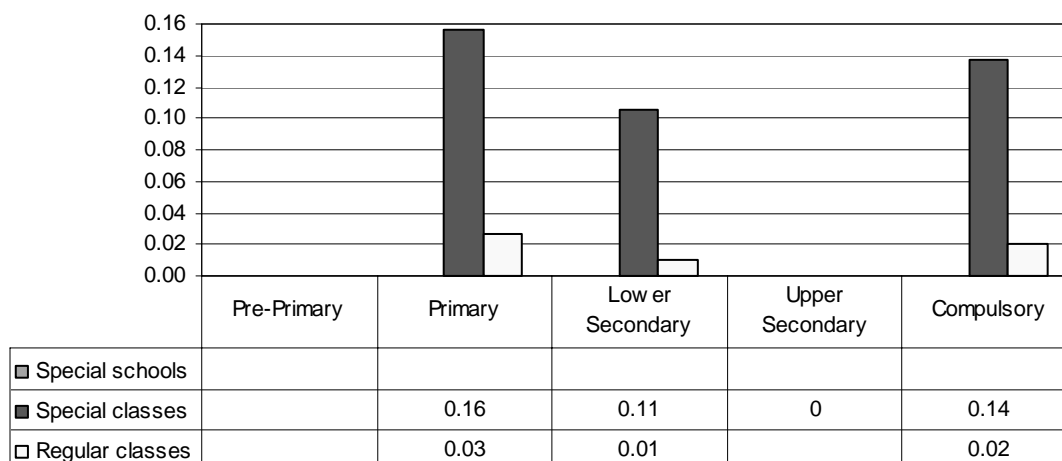
Total - Category 6. Total percentage of students with speech impairments falling within the resources definition, by phase of education



Note: Special schools data are not applicable.
 Special classes data in pre-primary education are not applicable.
 Regular classes data in pre-primary and upper secondary education are not applicable.

Category 7 Cross-national Category A - Those with emotional disturbance other than with emotional disturbance accompanied with intellectual disability or health impairment.

Proportion of students who are emotionally disturbed by phases of education in special schools, special classes and regular classes

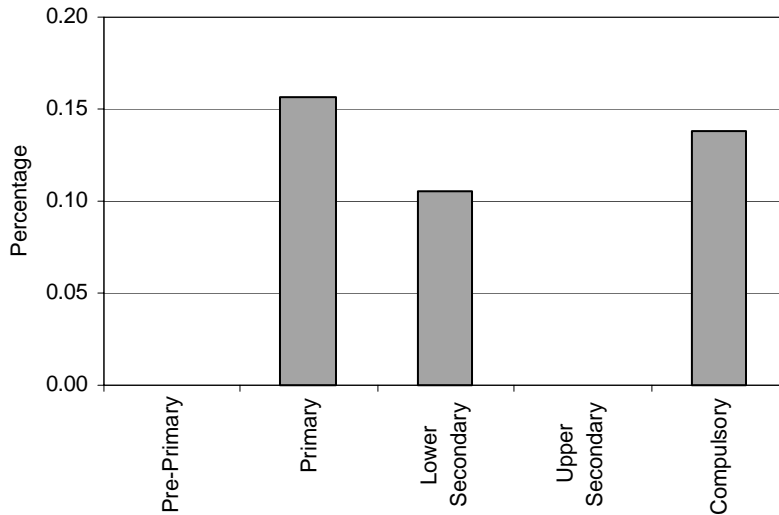


Note: Special schools data are not applicable.
 Special classes data in pre-primary education are not applicable.
 Regular classes data in pre-primary and upper secondary education are not applicable.

Special Schools – Category 7. Emotionally disturbed

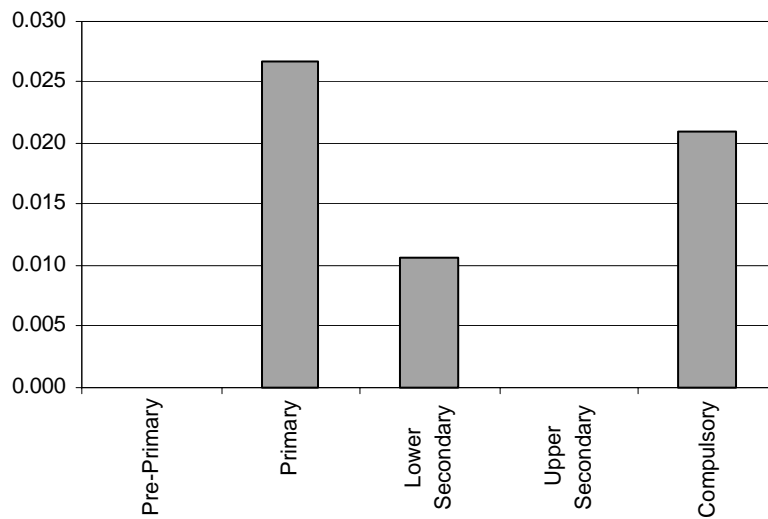
NOT APPLICABLE

Special Classes - Category 7. Total percentage of students who are emotionally disturbed falling within the resources definition, by phase of education



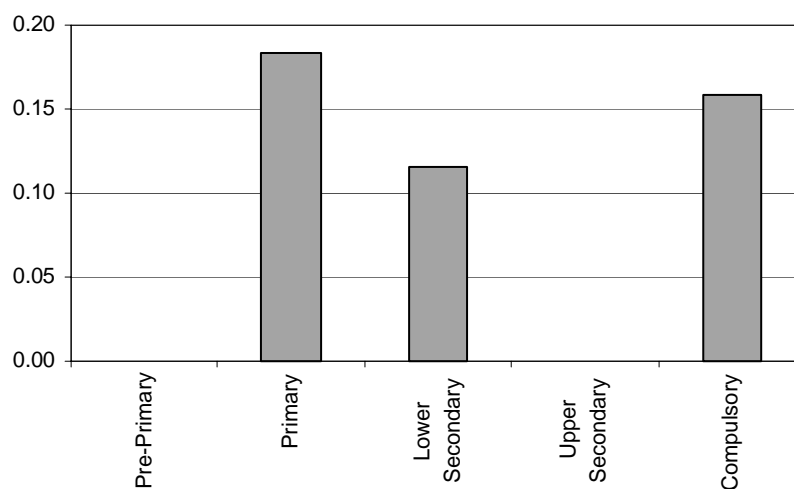
Note: Special classes data in pre-primary education are not applicable.

Regular Classes - Category 7. Total percentage of students who are emotionally disturbed falling within the resources definition, by phase of education



Note: Regular classes data in pre-primary and upper secondary education are not applicable.

Total - Category 7. Total percentage of students who are emotionally disturbed falling within the resources definition, by phase of education



Note: Special schools data are not applicable.
Special classes data in pre-primary education are not applicable.
Regular classes data in pre-primary and upper secondary education are not applicable.

Category 8 Cross-national Category C – A definition of this category has not been made available.