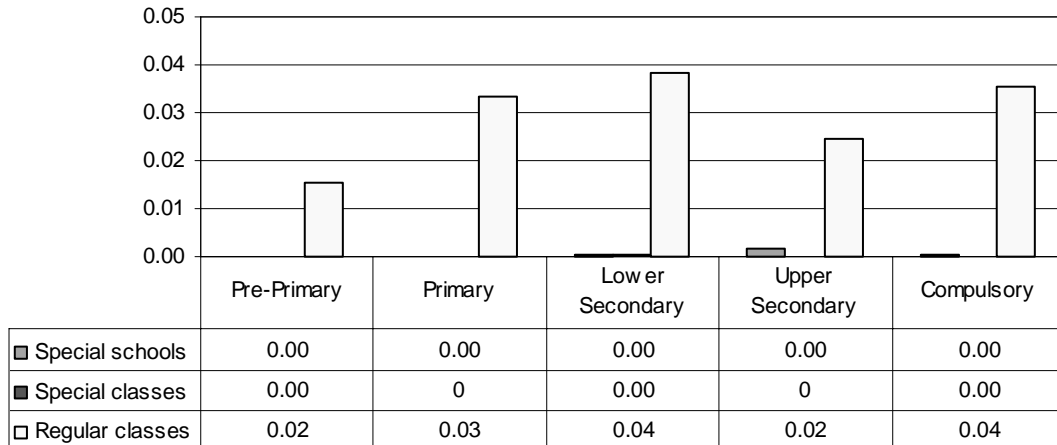


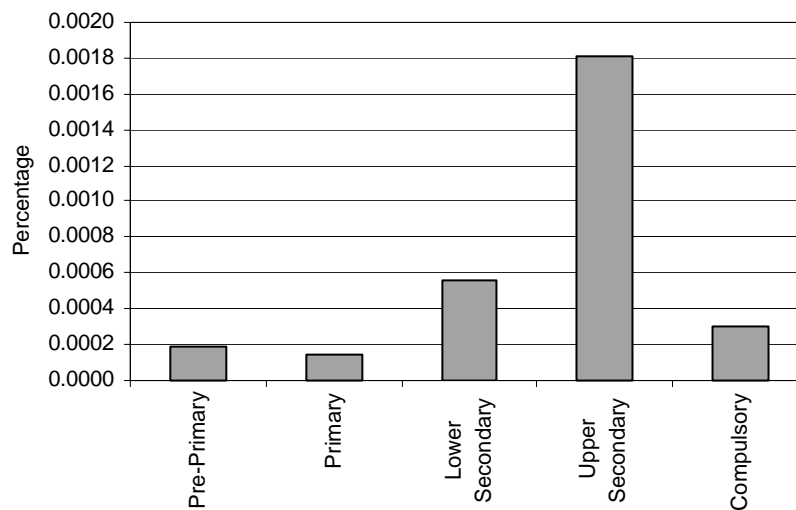
ITALY

Category 1 Cross-national Category A - Includes blind children and partially-sighted children.

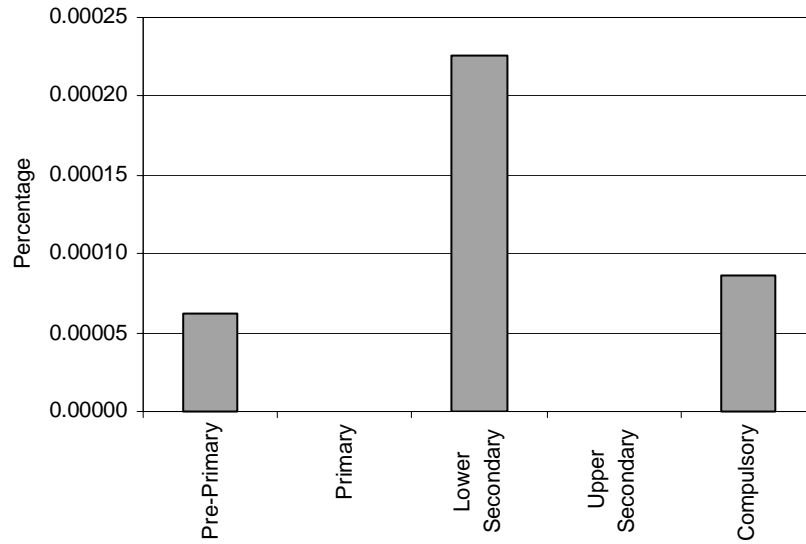
Proportion of students with visual impairments by phases of education in special schools, special classes and regular classes



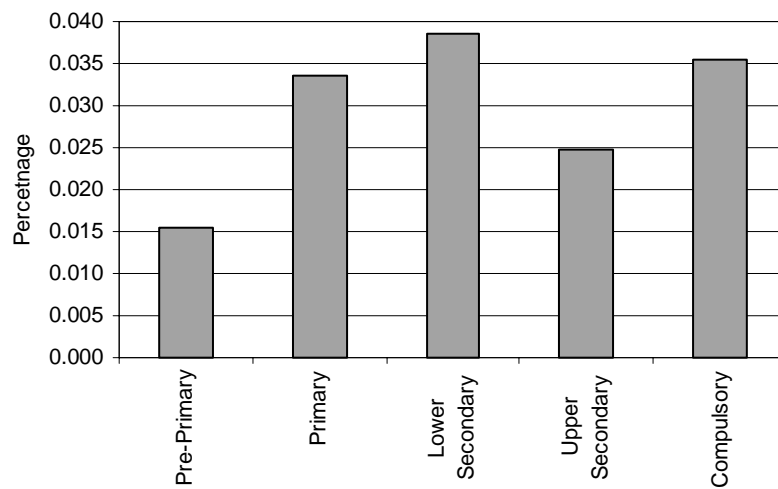
Special schools - Category 1. Total percentage of students with visual impairments falling within the resources definition, by phase of education



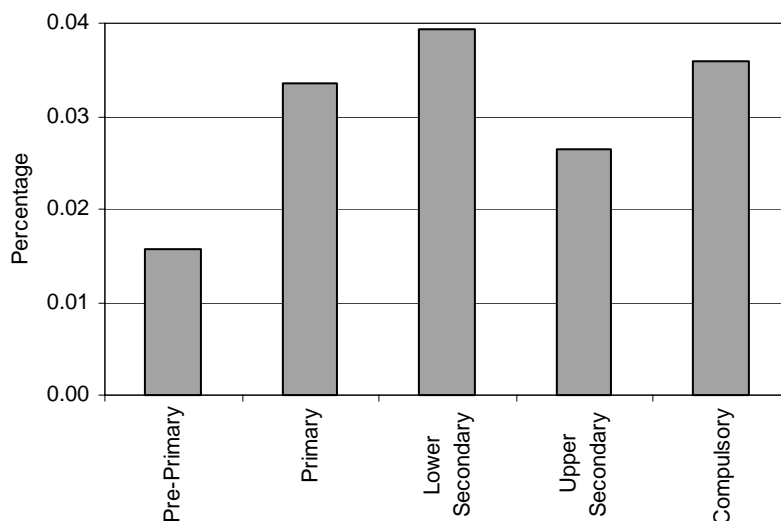
Special classes - Category 1. Total percentage of students with visual impairments falling within the resources definition, by phase of education



Regular classes - Category 1. Total percentage of students with visual impairments falling within the resources definition, by phase of education

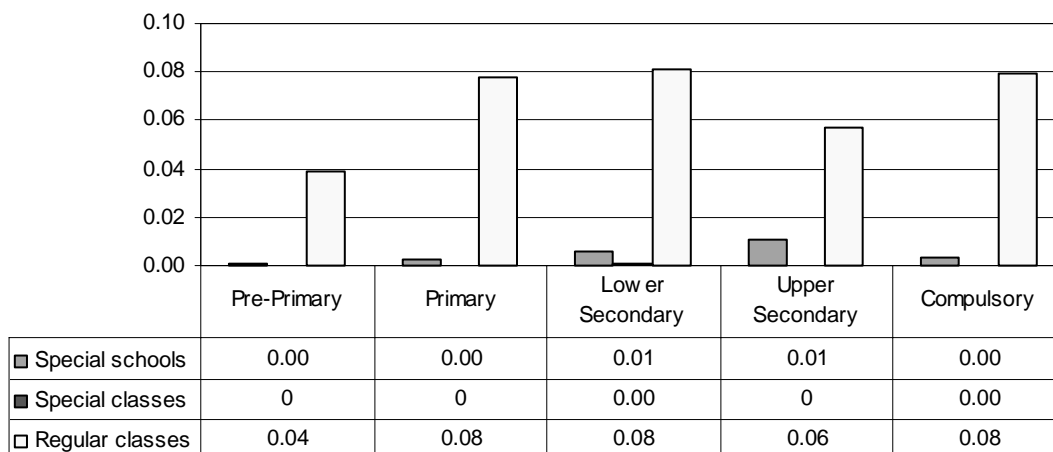


Total - Category 1. Total percentage of students with visual impairments falling within the resources definition

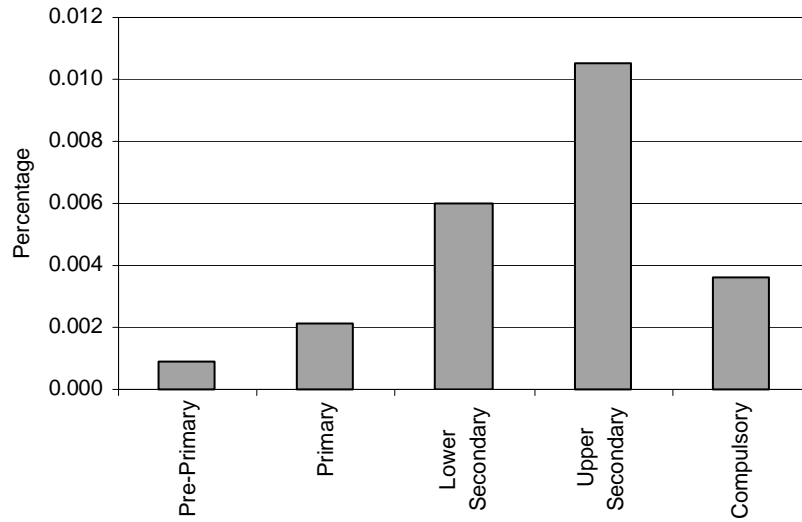


Category 2 Cross-national Category A - Includes deaf children and partially-deaf children.

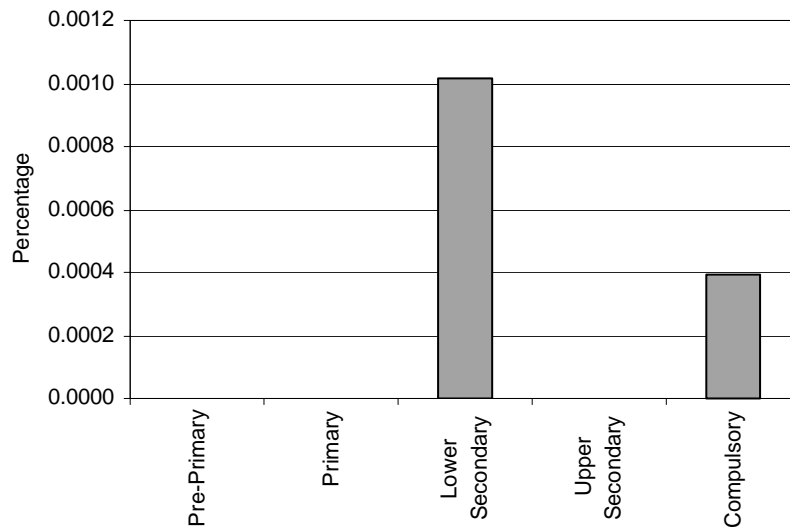
Proportion of students with hearing impairments by phases of education in special schools, special classes and regular classes



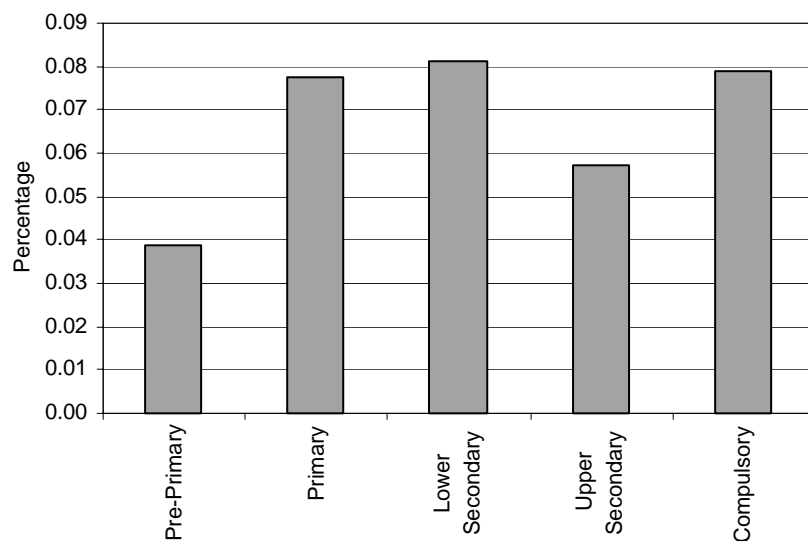
Special schools - Category 2. Total percentage of students with hearing impairments falling within the resources definition, by phase of education



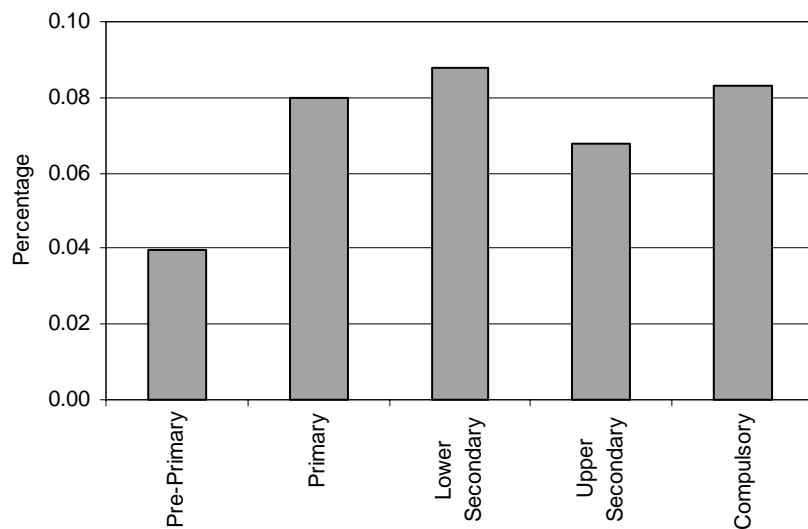
Special Classes - Category 2. Total percentage of students with hearing impairments falling within the resources definition, by phase of education



Regular classes - Category 2. Total percentage of students with hearing impairments falling within the resources definition, by phase of education

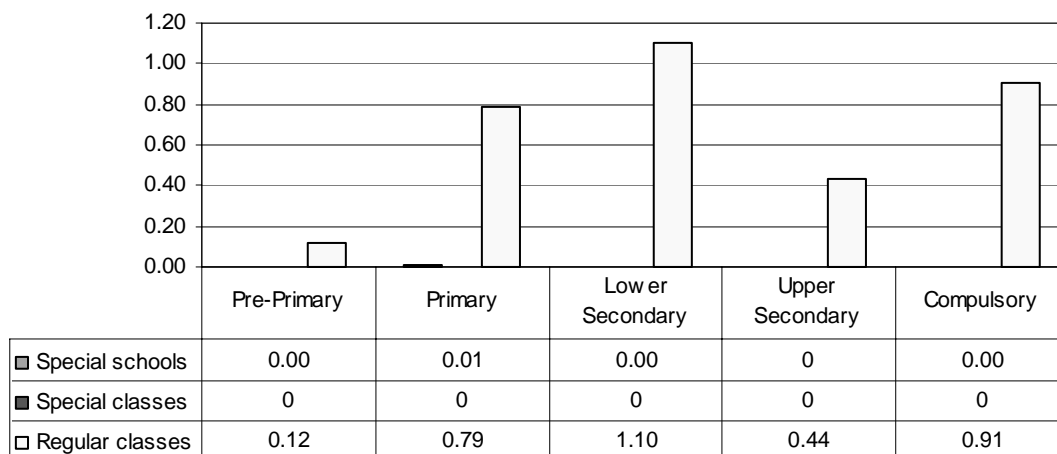


Total - Category 2. Total percentage of students with hearing impairments falling within the resources definition



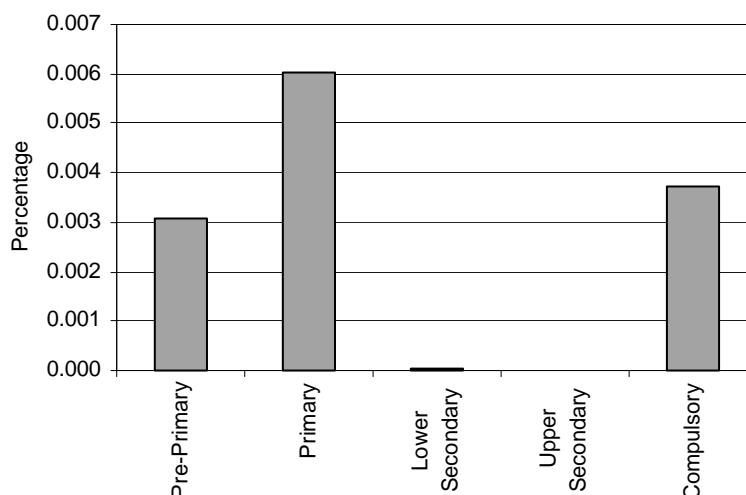
Category 3 Cross-national Category A - This category includes both mild mental retardation and moderate mental retardation. It includes therefore those pupils who are classified as “educable” (that is, that can acquire the knowledge in skills demanded of the final year of primary education – age 10-11) and as “trainable” (that is, that can acquire the knowledge in skills demanded of the second year of primary education – age 7-8). The IQ levels of these pupils range from 70 to 35-40.

Proportion of students with moderate mental handicaps by phases of education in special schools, special classes and regular classes



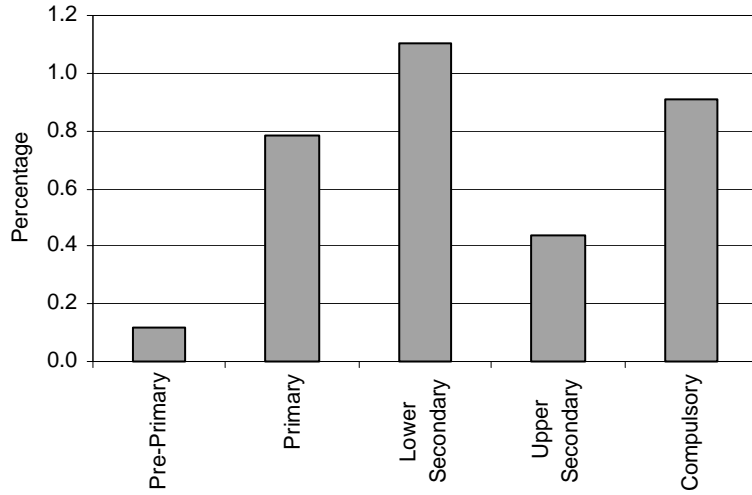
Note: Regular classes data in upper secondary education also include Severe Mental Handicap (category 4) data.

Special schools - Category 3. Total percentage of students with moderate mental handicap falling within the resources definition, by phase of education



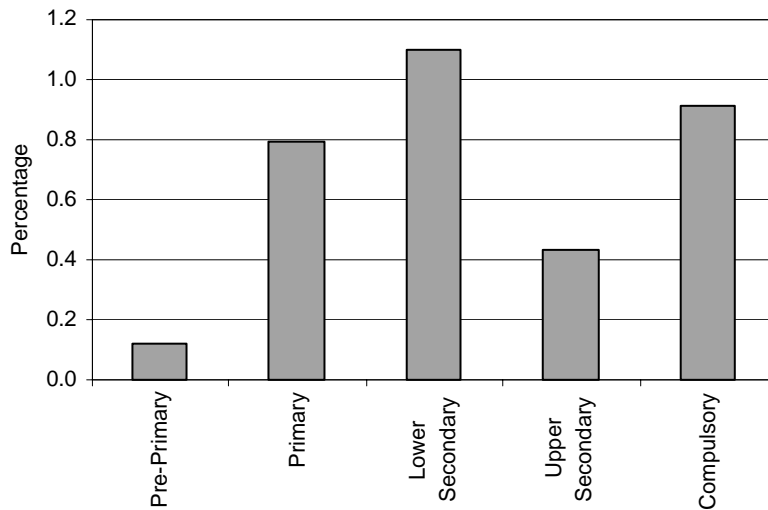
Special Classes – Category 3. Moderate mental handicap
NIL

Regular Classes - Category 3. Total percentage of students with moderate mental handicap falling within the resources definition, by phase of education



Note: Regular classes data in upper secondary education also include Severe Mental Handicap (category 4) data.

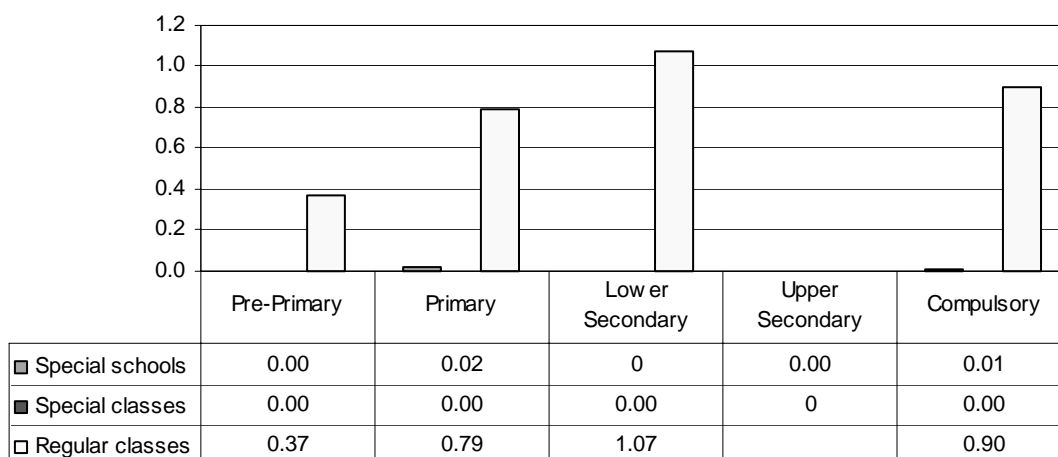
Total - Category 3. Total percentage of students with moderate mental handicap falling within the resources definition, by phase of education



Note: Regular classes data in upper secondary education also include Severe Mental Handicap (category 4) data.

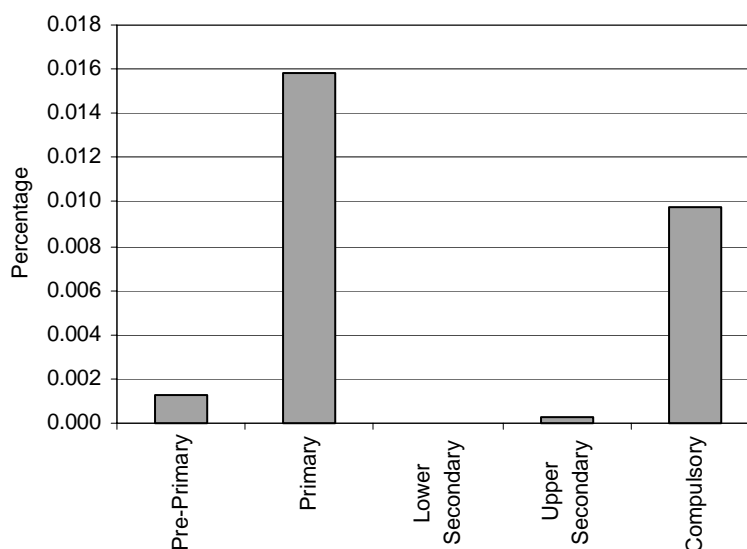
Category 4 Cross-national Category A - This category includes both the group with serious mental retardation and the group with most serious mental retardation. It includes pupils who can at most acquire a minimum level of communicative language and pupils who at most can acquire very basic self-care and communication skills. The IQ levels of these pupils range from 35-40 to under 20-25.

Proportion of students with severe mental handicaps by phases of education in special schools, special classes and regular classes

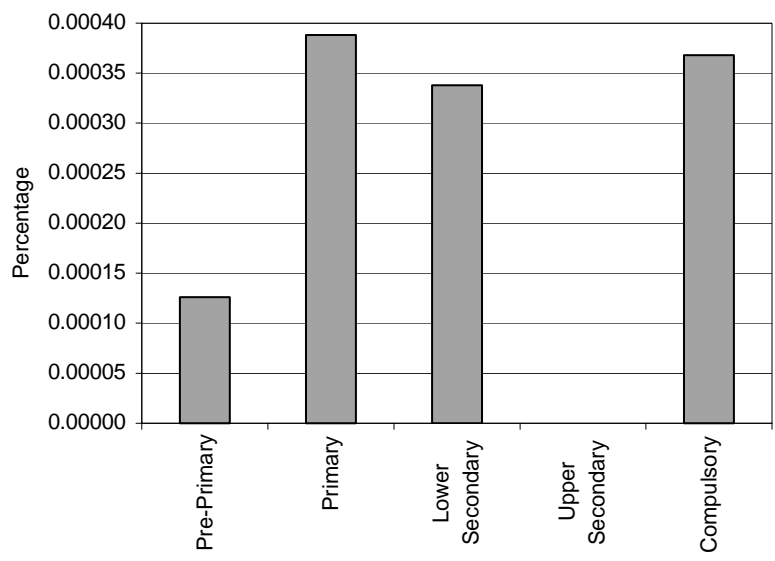


Note: Regular classes data in upper secondary education are included in Moderate Mental Handicap (category 3) data.

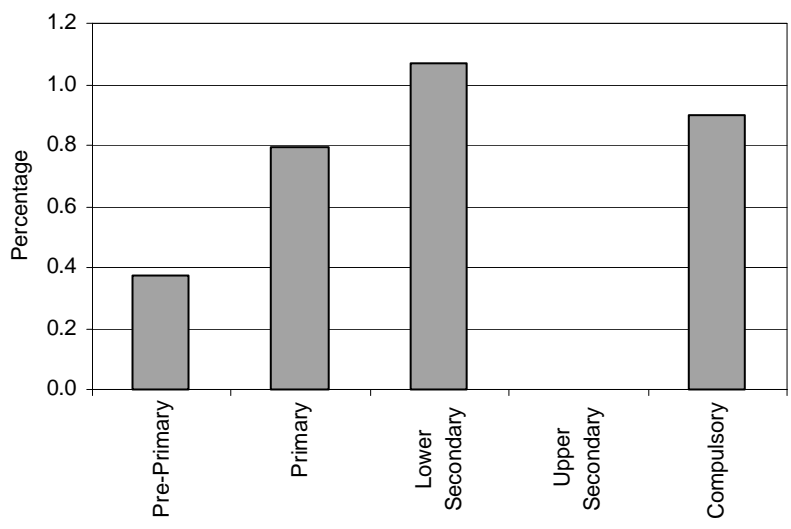
Special schools - Category 4. Total percentage of students with severe mental handicap falling within the resources definition, by phase of education



Special classes - Category 4. Total percentage of students with severe mental handicap falling within the resources definition, by phase of education

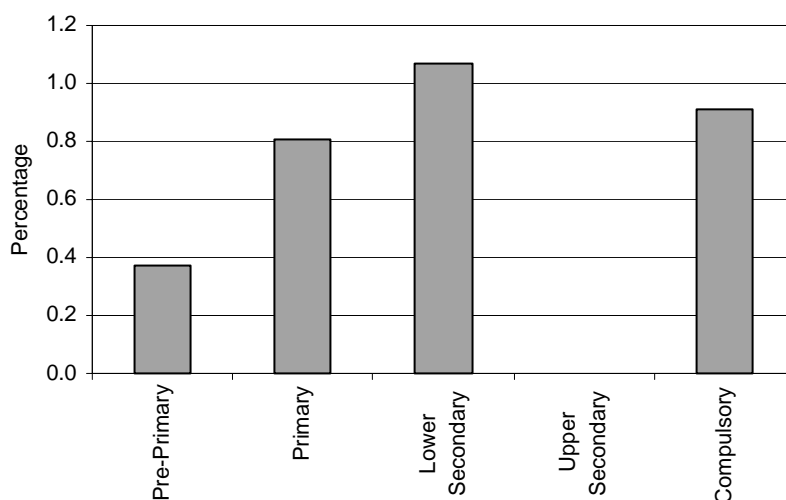


Regular classes - Category 4. Total percentage of students with severe mental handicap falling within the resources definition, by phase of education



Note: Regular classes data in upper secondary education are included in Moderate Mental Handicap (category 3) data.

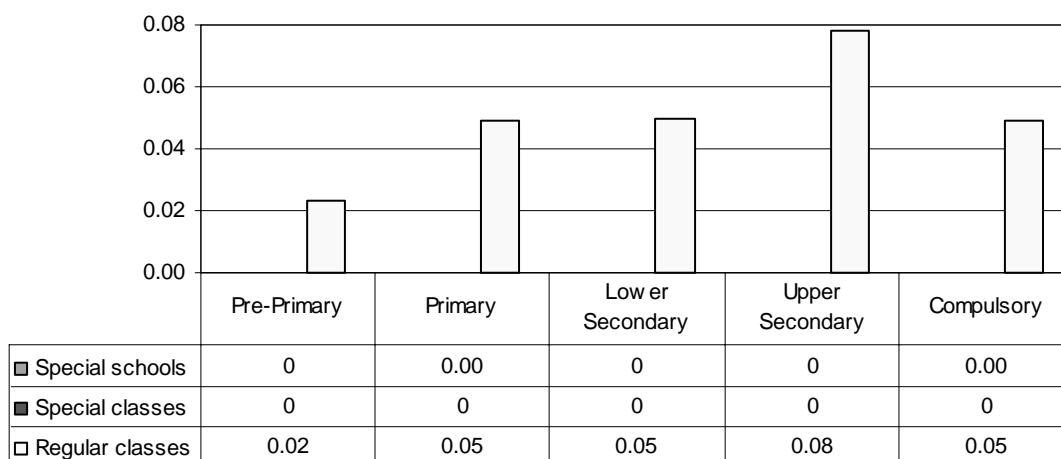
Total - Category 4. Total percentage of students with severe mental handicap falling within the resources definition



Note: Regular classes data in upper secondary education are included in Moderate Mental Handicap (category 3) data.

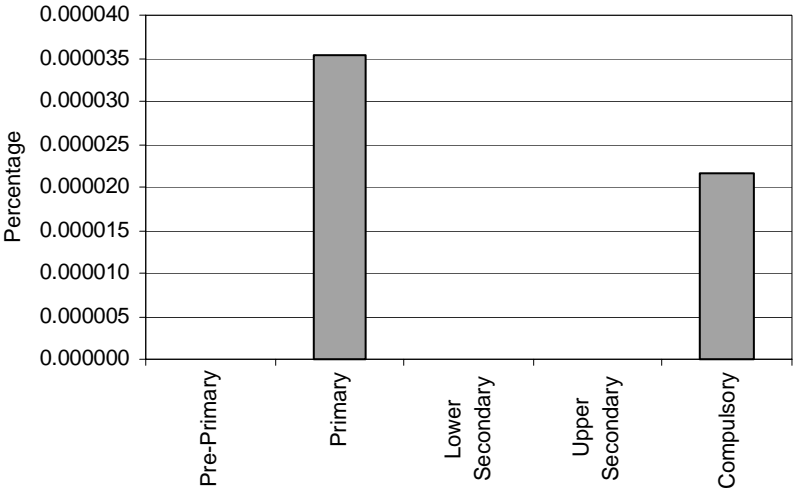
Category 5 Cross-national Category A - Children with a slight motorial impairment and or a manual impairment, that would not prevent from gaining a relative autonomy.

Proportion of students with mild physical handicaps by phases of education in special schools, special classes and regular classes



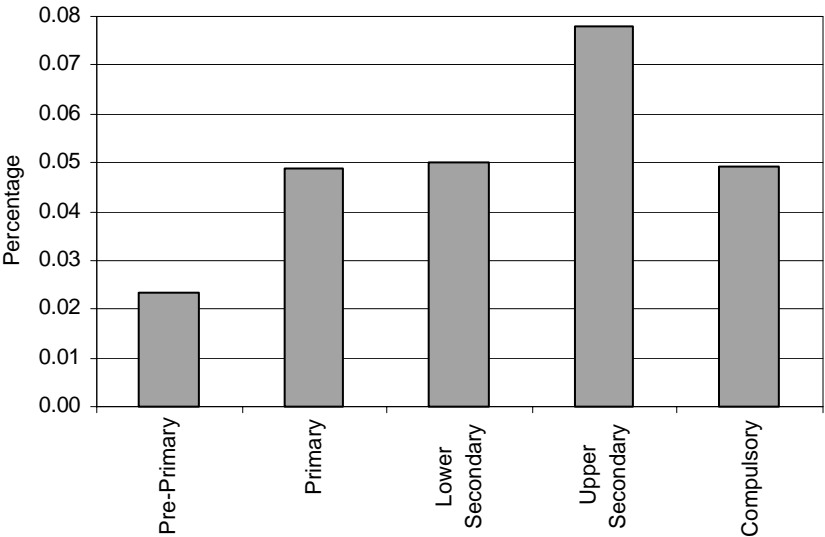
Note: Regular classes data in upper secondary education also include Severe Physical Handicap (category 6) data.

Special Schools - Category 5. Total percentage of students with mild physical handicap falling within the resources definition, by phase of education



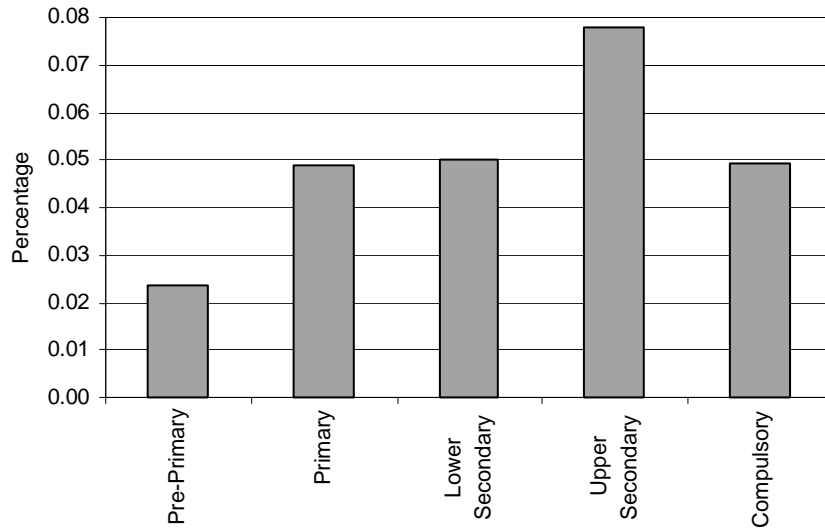
Special Classes – Category 5. Mild physical handicap
NIL

Regular classes - Category 5. Total percentage of students with mild physical handicap falling within the resources definition, by phase of education



Note: Regular classes data in upper secondary education also include Severe Physical Handicap (category 6) data.

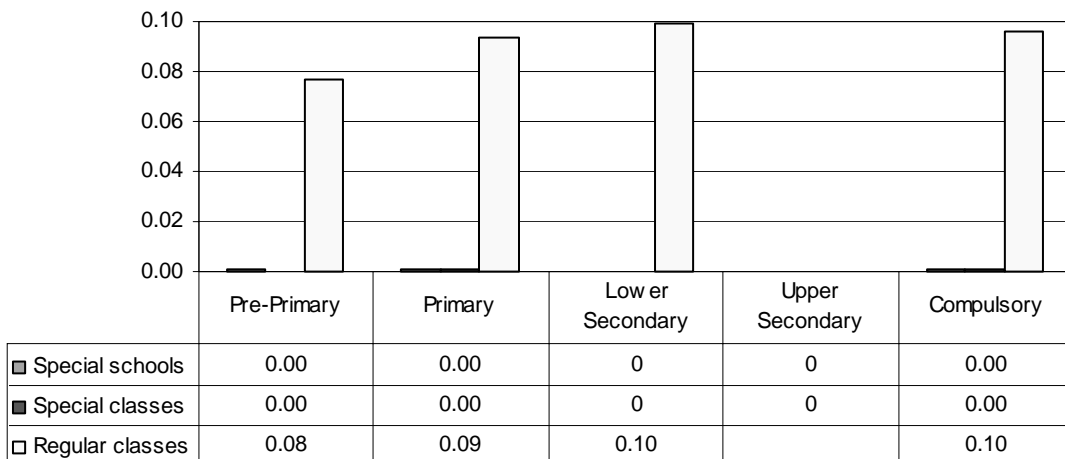
Total - Category 5. Total percentage of students with mild physical handicap falling within the resources definition



Note: Regular classes data in upper secondary education also include Severe Physical Handicap (category 6) data.

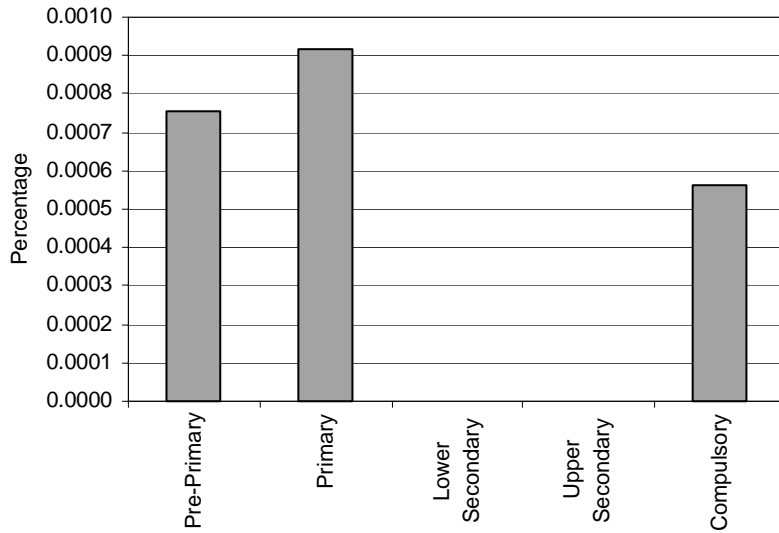
Category 6 Cross-national Category A - Children with a profound motorial impairment and or a manual impairment, deeply affecting personal autonomy. These children necessitate adequate and continuous assistance.

Proportion of students with severe physical handicap by phases of education in special schools, special classes and regular classes

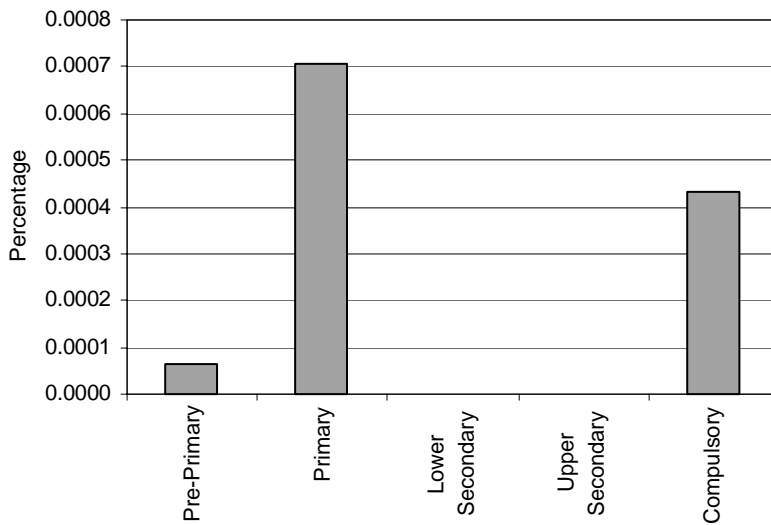


Note: Regular classes data in upper secondary education are included in Mild Physical Handicap (category 5) data.

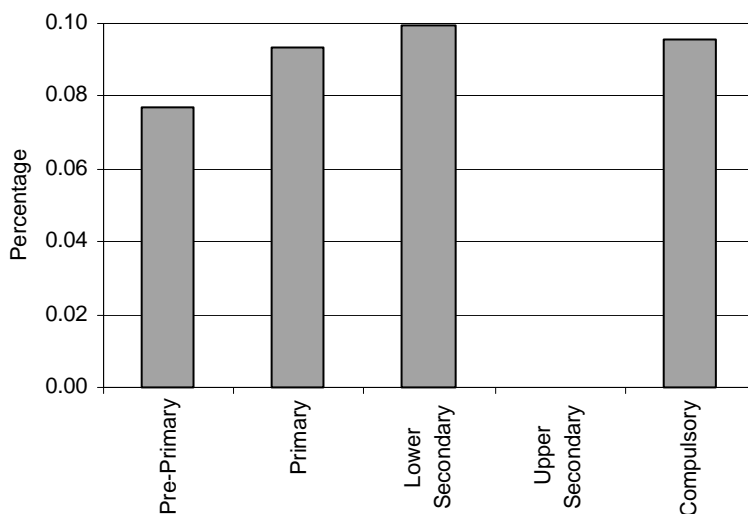
Special Schools - Category 6. Total percentage of students with severe physical handicap falling within the resources definition, by phase of education



Special Classes - Category 6. Total percentage of students with severe physical handicap falling within the resources definition, by phase of education

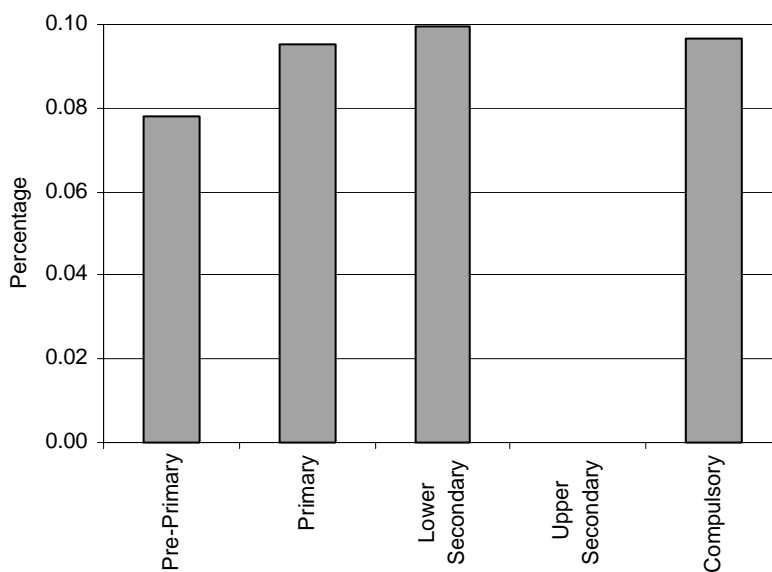


Regular Classes - Category 6. Total percentage of students with severe physical handicap falling within the resources definition, by phase of education



Note: Regular classes data in upper secondary education are included in Mild Physical Handicap (category 5) data.

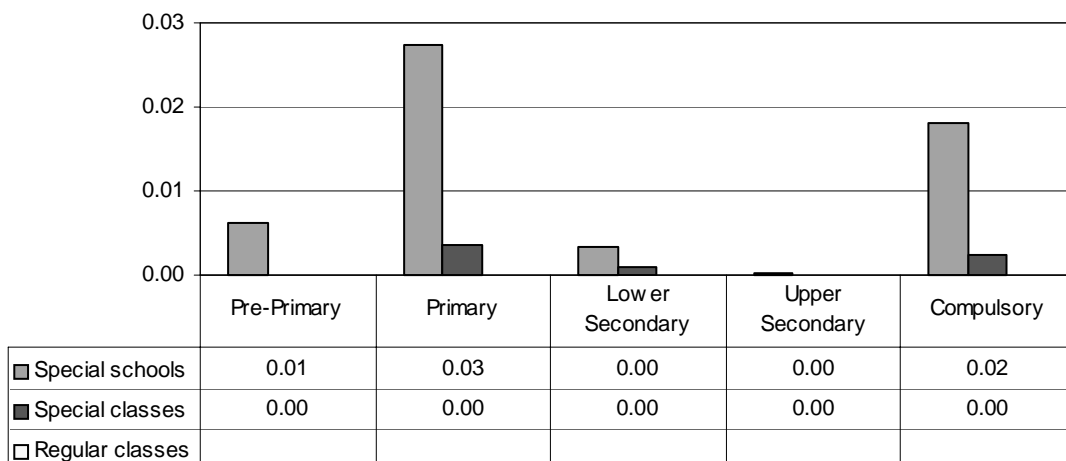
Total - Category 6. Total percentage of students with severe physical handicap falling within the resources definition



Note: Regular classes data in upper secondary education are included in Mild Physical Handicap (category 5) data.

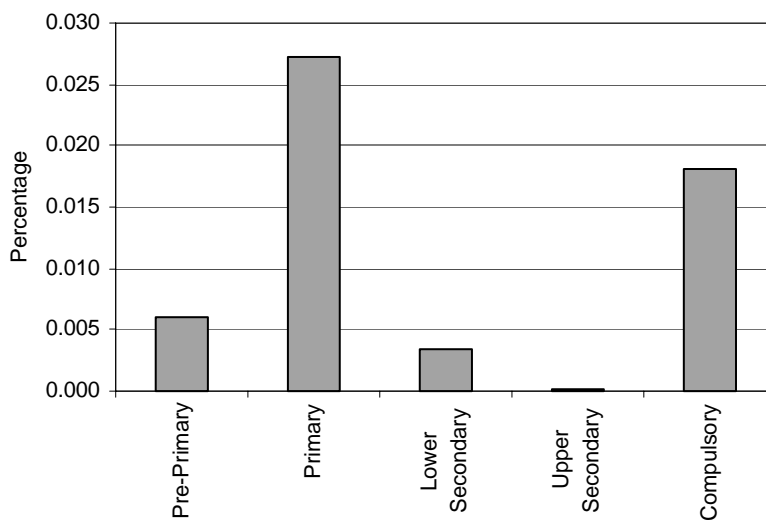
Category 7 Cross-national Category A - Children with two or more of the impairments included in categories from 1 to 6. Residual category.

Proportion of students with multiple handicaps by phases of education in special schools, special classes and regular classes

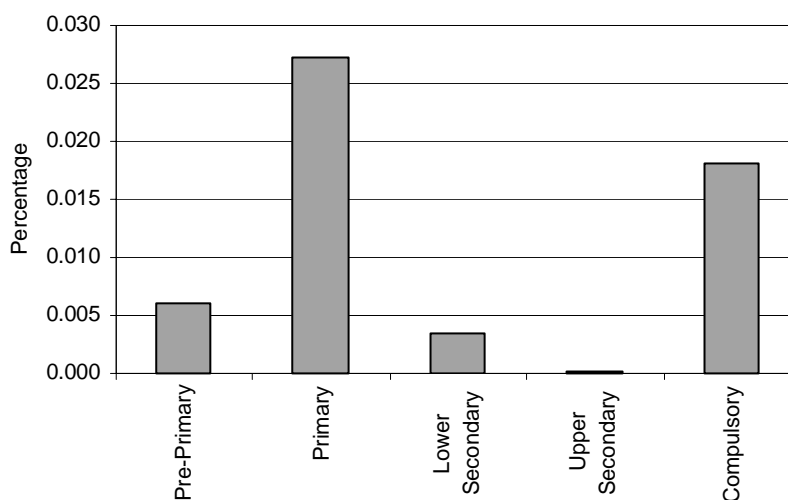


Note: Regular classes data are included in other categories.

Special schools - Category 7. Total percentage of students with multiple handicaps falling within the resources definition, by phase of education

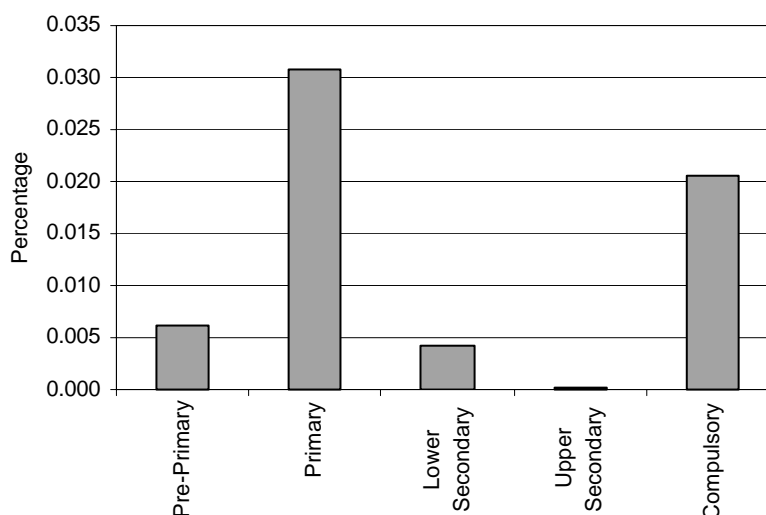


Special classes - Category 7. Total percentage of students with multiple handicaps falling within the resources definition, by phase of education



Regular Classes – Category 7. Multiple handicaps
INCLUDED IN OTHER CATEGORIES

Total - Category 7. Total percentage of students with multiple handicaps falling within the resources definition



Note: Regular classes data are included in other categories.

Category 8 Cross-national Category C - Approximately 96 000 students with a foreign citizenship attended Italian schools in 1998/99 (20 000 in ISCED0, 44 000 in ISCED1, 21 000 in ISCED2 and 11 000 in ISCED3). Category C - pupils with a foreign citizenship do not directly receive additional resources but benefit rather from the resources allocated to schools to promote and increase activities/projects of inclusion, e.g. intercultural education, language training, etc.

**Special Schools – Category 8. Students with
foreign citizenship**

CATEGORY NOT TAKEN INTO ACCOUNT IN
THIS STUDY

**Special Classes – Category 8. Students with
foreign citizenship**

CATEGORY NOT TAKEN INTO ACCOUNT IN
THIS STUDY

**Regular Classes – Category 8. Students with
foreign citizenship**

CATEGORY NOT TAKEN INTO ACCOUNT IN
THIS STUDY