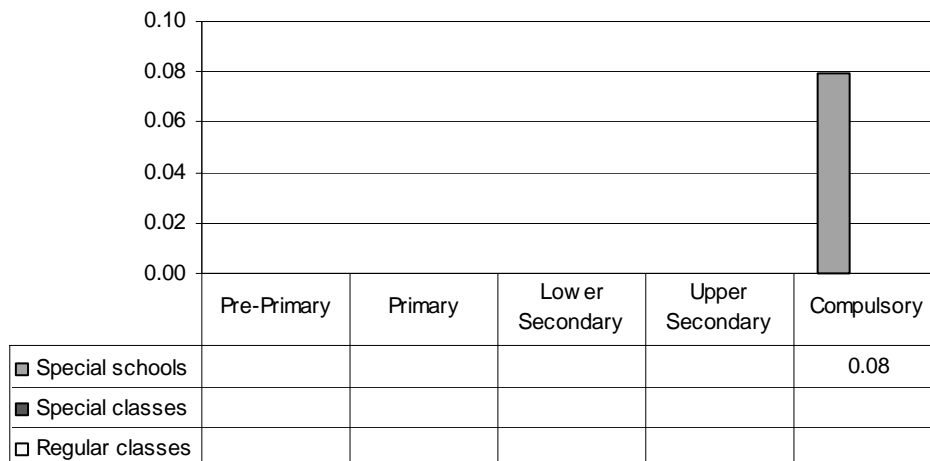


FRANCE

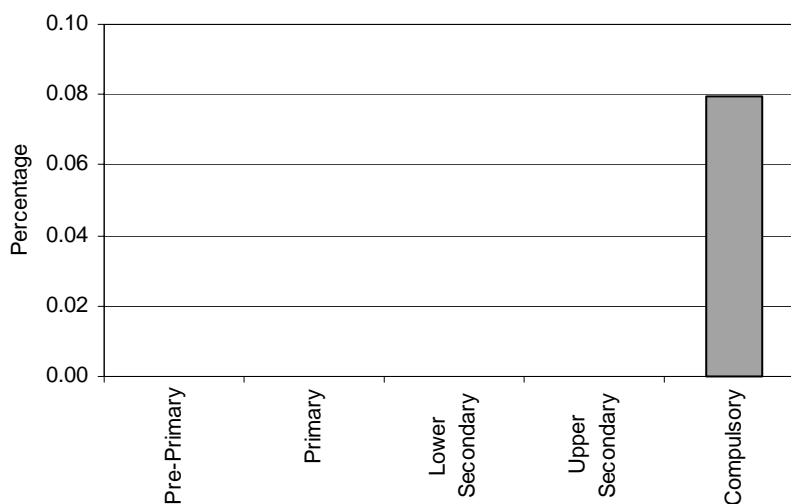
Category 1 Cross-national Category A - Severe mental handicap (IQ between 20 & 34) concerns persons who can benefit from the systematic learning of simple gestures.

Proportion of students with severe mental handicaps by phases of education in special schools, special classes and regular classes



Note: Special schools data in pre-primary, primary, lower secondary and upper secondary education are included in compulsory education data.
Special classes and regular classes data are not applicable.

Special Schools - Category 1. Total percentage of students with severe mental handicaps falling within the resources definition, by phase of education

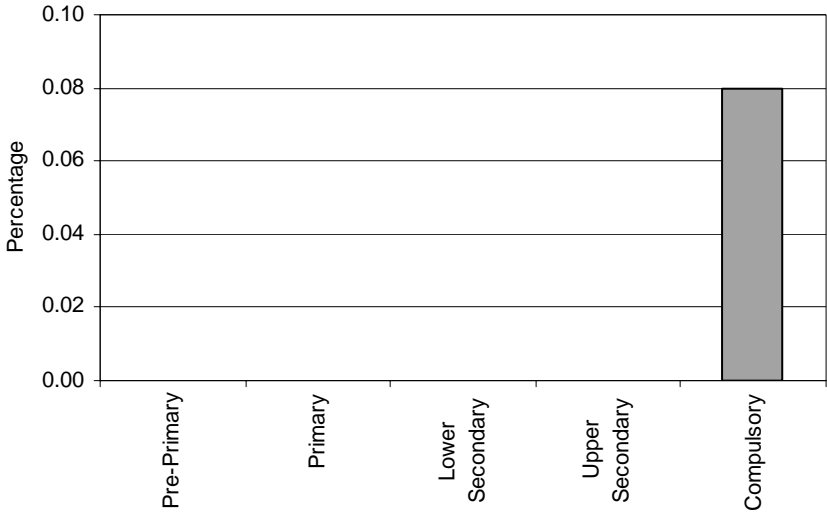


Note: Special schools data in pre-primary, primary, lower secondary and upper secondary education are included in compulsory education data.

Special Classes – Category 1. Severe mental handicap
NOT APPLICABLE

Regular Classes – Category 1. Severe mental handicap
NOT APPLICABLE

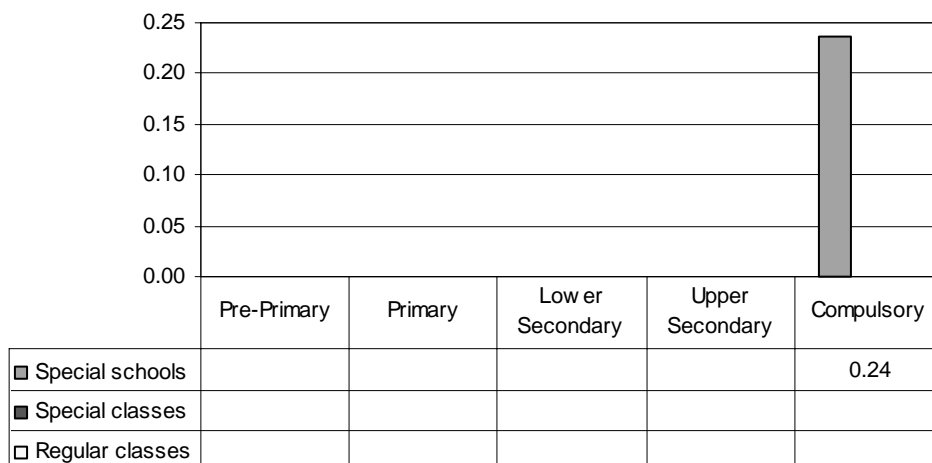
Total - Category 1. Total percentage of students with severe mental handicaps falling within the resources definition



Note: Special schools data in pre-primary, primary, lower secondary and upper secondary education are included in compulsory education data.
Special classes and regular classes data are not applicable.

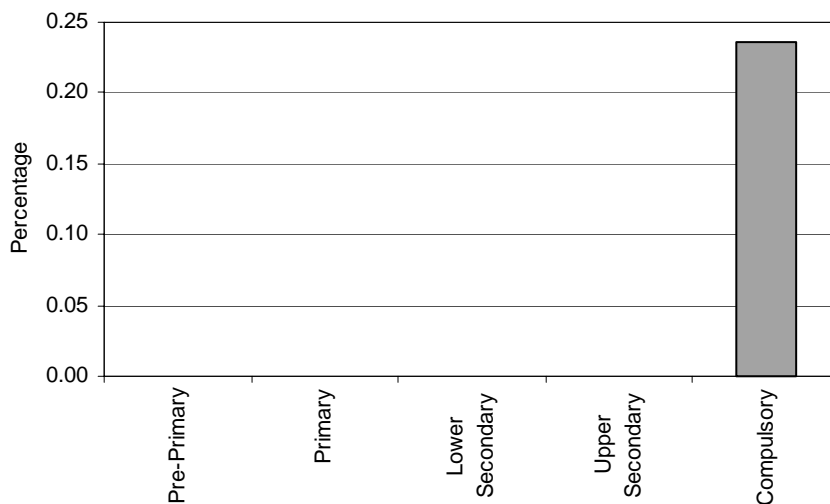
Category 2 Cross-national Category A - Moderate mental handicap (IQ between 35 & 49) concerns persons able to acquire simple notions of communication, hygiene and elementary safety as well as simple manual skills, but who are incapable of learning how to do arithmetic or reading.

Proportion of students with moderate mental handicaps by phases of education in special schools, special classes and regular classes



Note: Special schools data in pre-primary, primary, lower secondary and upper secondary education are included in compulsory education data.
Special classes and regular classes data are not applicable.

Special Schools - Category 2. Total percentage of students with moderate mental handicaps falling within the resources definition, by phase of education

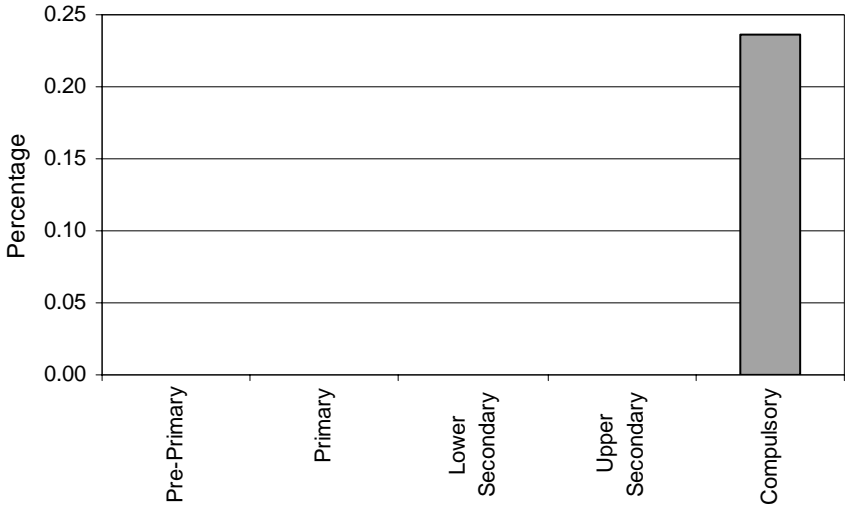


Note: Special schools data in pre-primary, primary, lower secondary and upper secondary education are included in compulsory education data.

Special Classes – Category 2. Moderate mental handicap
NOT APPLICABLE

Regular Classes – Category 2. Moderate mental handicap
NOT APPLICABLE

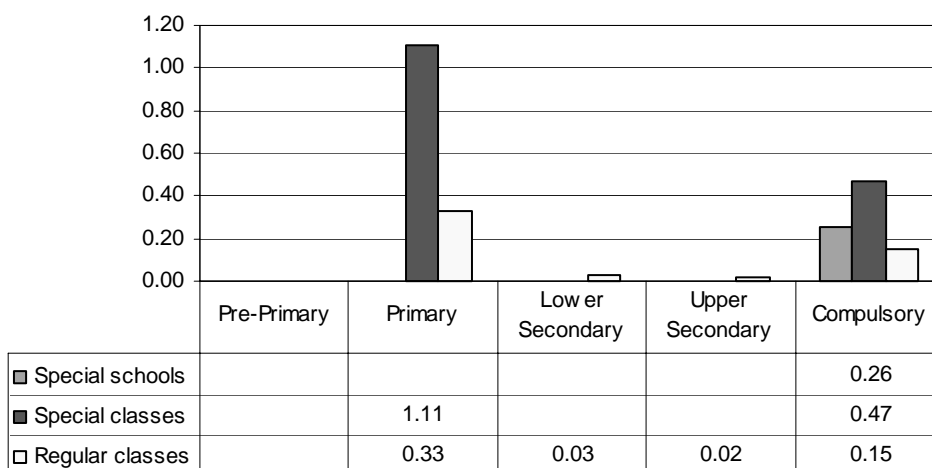
Total - Category 2. Total percentage of students with moderate mental handicaps falling within the resources definition



Note: Special schools data in pre-primary, primary, lower secondary and upper secondary education are included in compulsory education data.
Special classes and regular classes data are not applicable.

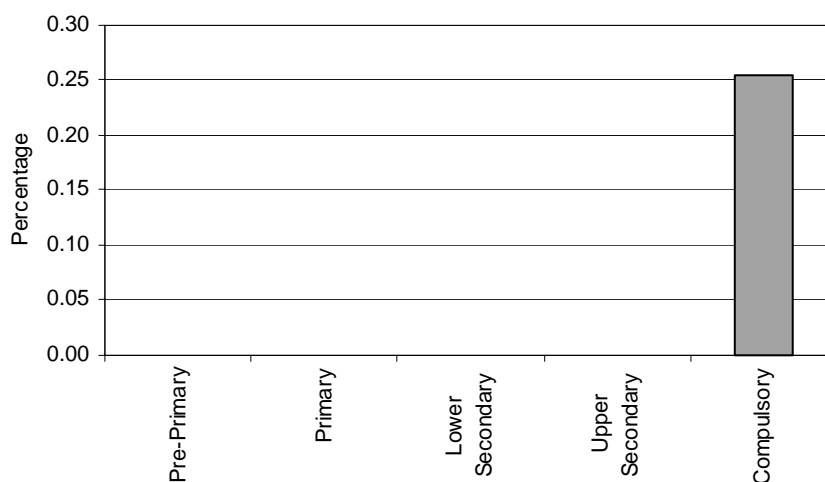
Category 3 Cross-national Category A - This category covers handicaps as regards intelligence, memory and thinking. It concerns persons (IQ between 50 & 70) capable of learning practical skills and how to read, as well as notions of arithmetic thanks to special education, and who can be taught a certain degree of socialisation.

Proportion of students with mild mental handicaps by phases of education in special schools, special classes and regular classes



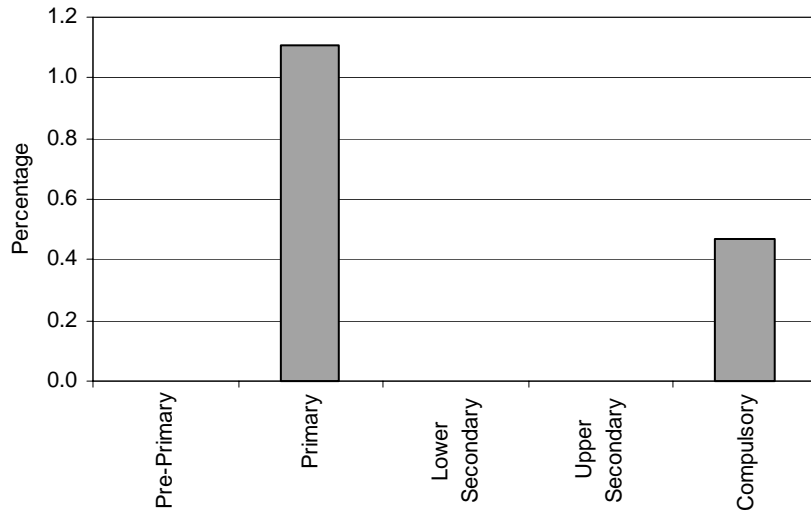
Note: Special schools data in pre-primary, primary, lower secondary and upper secondary education are included in compulsory education data.
 Special classes data in pre-primary, lower secondary and upper secondary education are not applicable.
 Regular classes data in pre-primary education are missing.

Special Schools - Category 3. Total percentage of students with mild mental handicaps falling within the resources definition, by phase of education



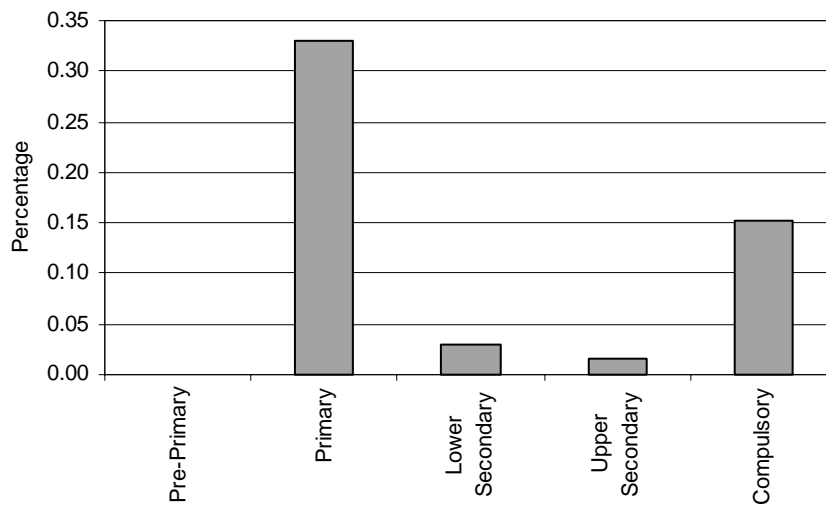
Note: Special schools data in pre-primary, primary, lower secondary and upper secondary education are included in compulsory education data.

Special Classes - Category 3. Total percentage of students with mild mental handicaps falling within the resources definition, by phase of education



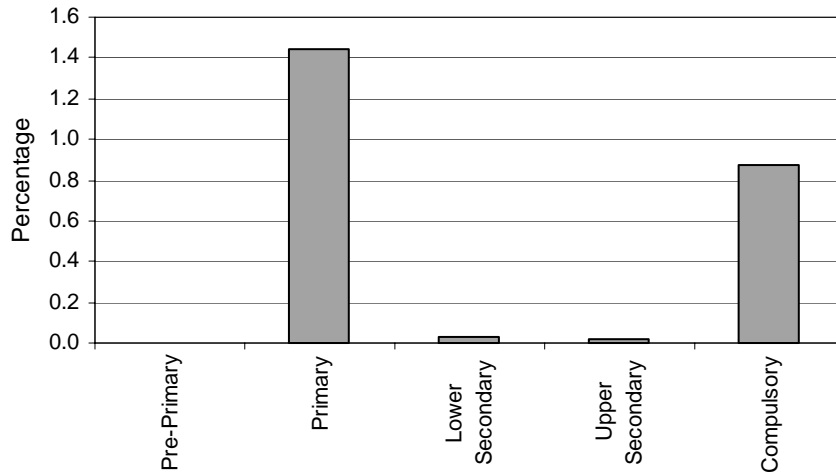
Note: Special classes data in pre-primary, lower secondary and upper secondary education are not applicable.

Regular Classes - Category 3. Total percentage of students with mild mental handicaps falling within the resources definition, by phase of education



Note: Regular classes data in pre-primary education are missing.

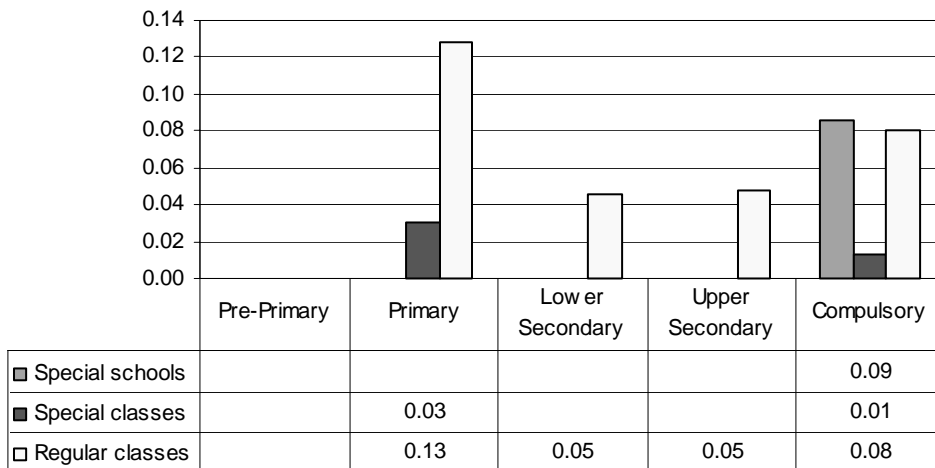
Total - Category 3. Total percentage of students with mild mental handicaps falling within the resources definition



Note: Special schools data in pre-primary, primary, lower secondary and upper secondary education are included in compulsory education data.
 Special classes data in pre-primary, lower secondary and upper secondary education are not applicable.
 Regular classes data in pre-primary education are missing.

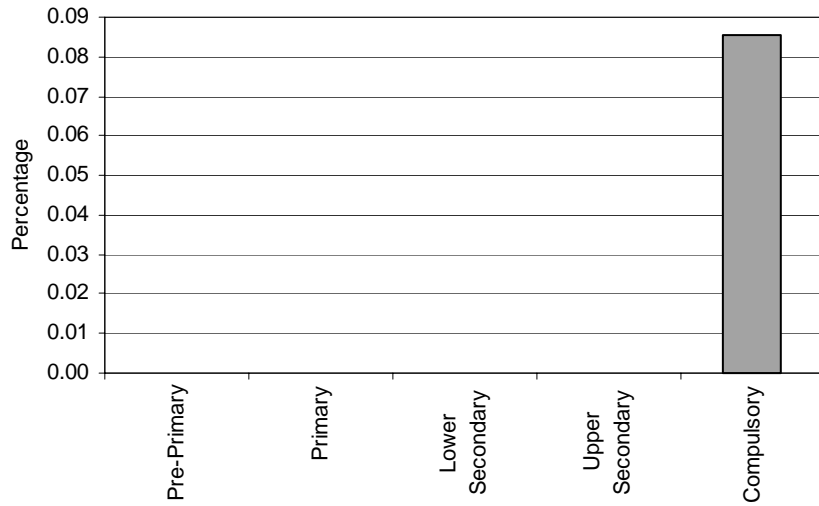
Category 4 Cross-national Category A - Orthopaedic and motor deficiencies have been broadly interpreted as covering the structure of the body and its visible parts. Such handicaps include mechanical and functional alterations to the face, head, neck, trunk and limbs, as well as limbs which are missing in whole or in part.

Proportion of students with physical handicaps by phases of education in special schools, special classes and regular classes



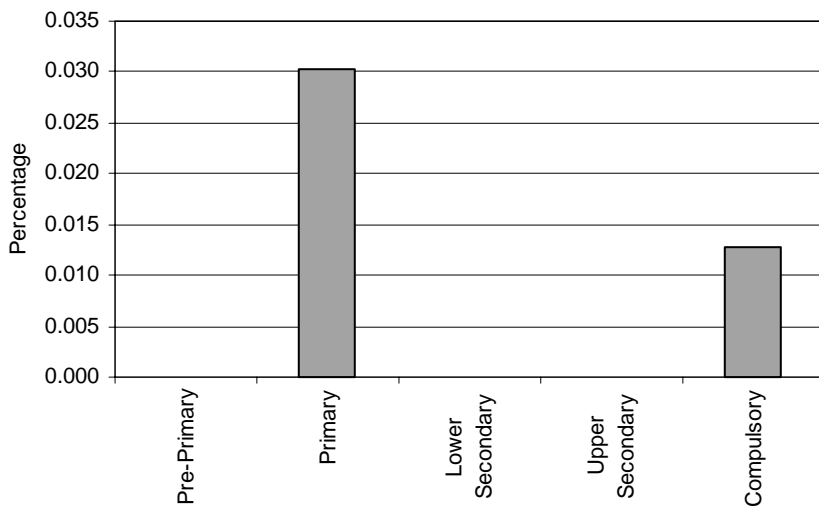
Note: Special schools data in pre-primary, primary, lower secondary and upper secondary education are included in compulsory education data.
 Special classes data in pre-primary, lower secondary and upper secondary education are not applicable.
 Regular classes data in pre-primary education are missing.

Special Schools - Category 4. Total percentage of students with physical handicap falling within the resources definition, by phase of education



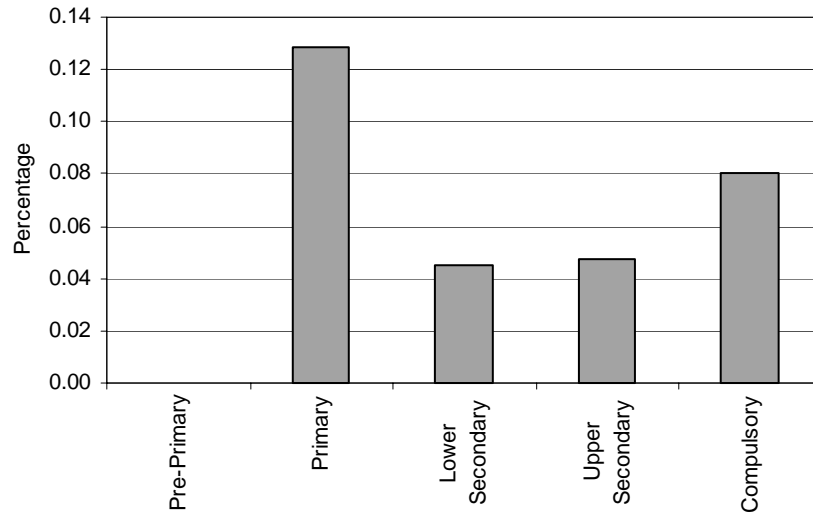
Note: Special schools data in pre-primary, primary, lower secondary and upper secondary education are included in compulsory education data.

Special Classes - Category 4. Total percentage of students with physical handicap falling within the resources definition, by phase of education



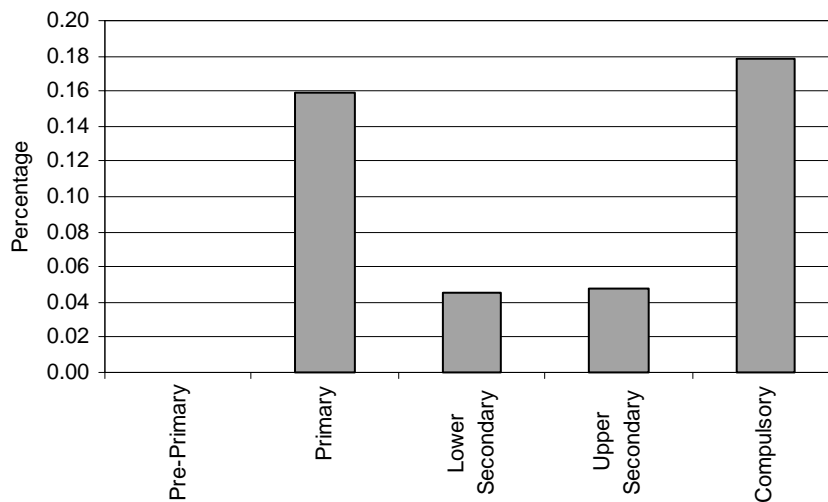
Note: Special classes data in pre-primary, lower secondary and upper secondary education are not applicable.

Regular Classes - Category 4. Total percentage of students with physical handicap falling within the resources definition, by phase of education



Note: Regular classes data in pre-primary education are missing.

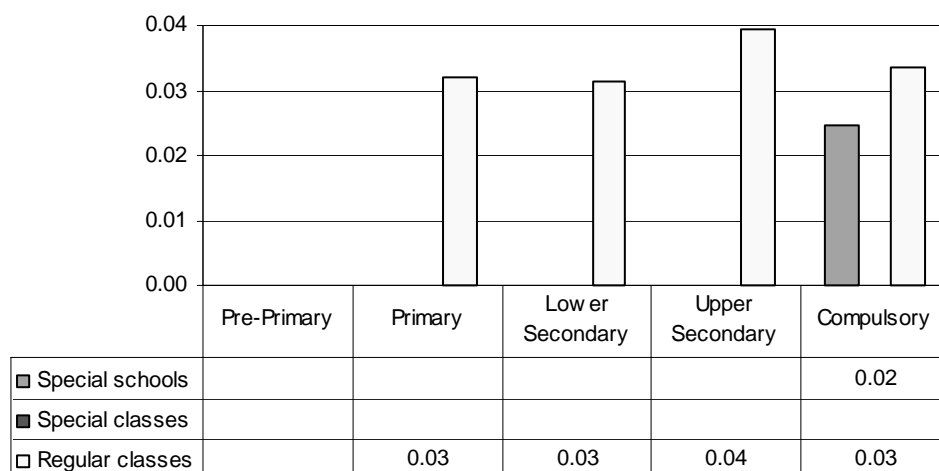
Total - Category 4. Total percentage of students with physical handicap falling within the resources definition



Note: Special schools data in pre-primary, primary, lower secondary and upper secondary education are included in compulsory education data.
 Special classes data in pre-primary, lower secondary and upper secondary education are not applicable.
 Regular classes data in pre-primary education are missing.

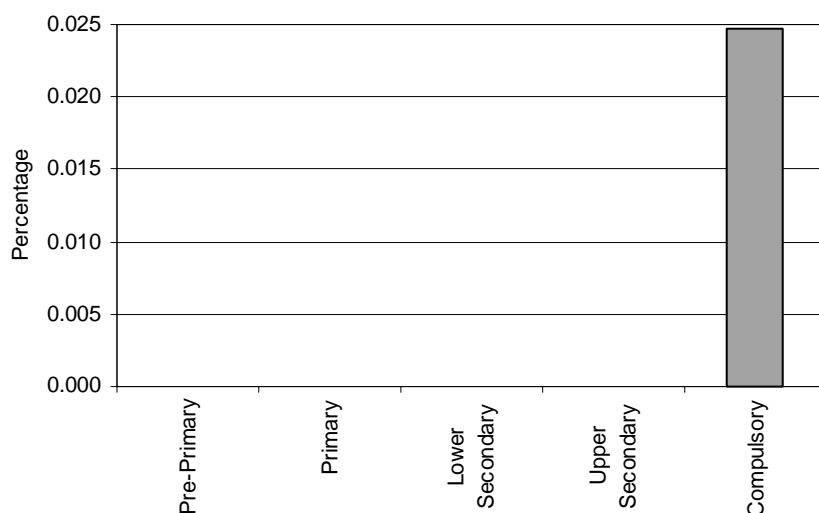
Category 5 Cross-national Category A - Metabolic or nutritional disorders include abnormal development and maturation, gluten intolerance, diabetes, malnutrition, and weight loss or gain (but exclude thinness and obesity).

Proportion of students with metabolic disorders by phases of education in special schools, special classes and regular classes



Note: Special schools data in pre-primary, primary, lower secondary and upper secondary education are included in compulsory education data.
 Special classes data are not applicable.
 Regular classes data in pre-primary education are missing.

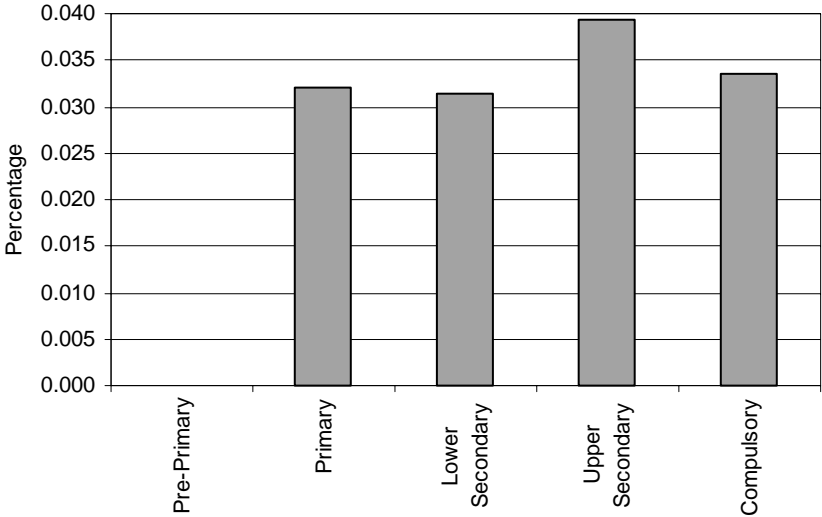
Special Schools – Category 5. Total percentage of students with metabolic disorders falling within the resources definition, by phase of education



Note: Special schools data in pre-primary, primary, lower secondary and upper secondary education are included in compulsory education data.

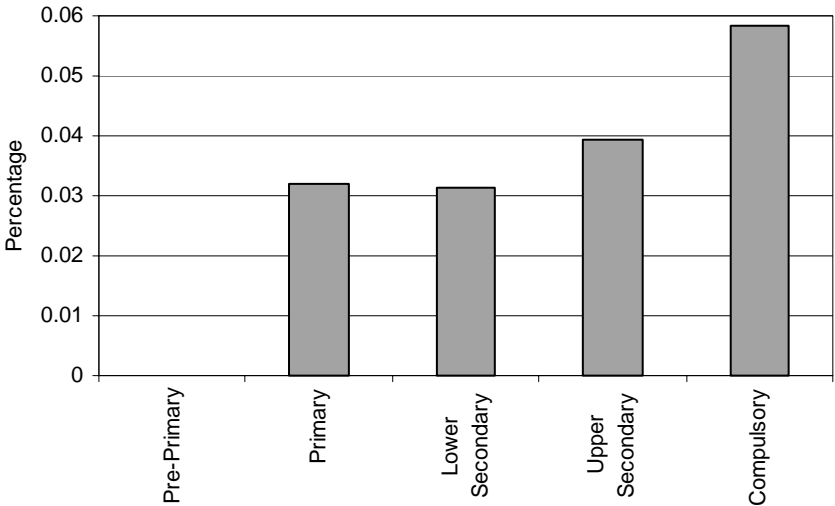
Special Classes – Category 5. Metabolic disorders
NOT APPLICABLE

Regular Classes – Category 5. Total percentage of students with metabolic disorders falling within the resources definition, by phase of education



Note: Regular classes data in pre-primary education are missing.

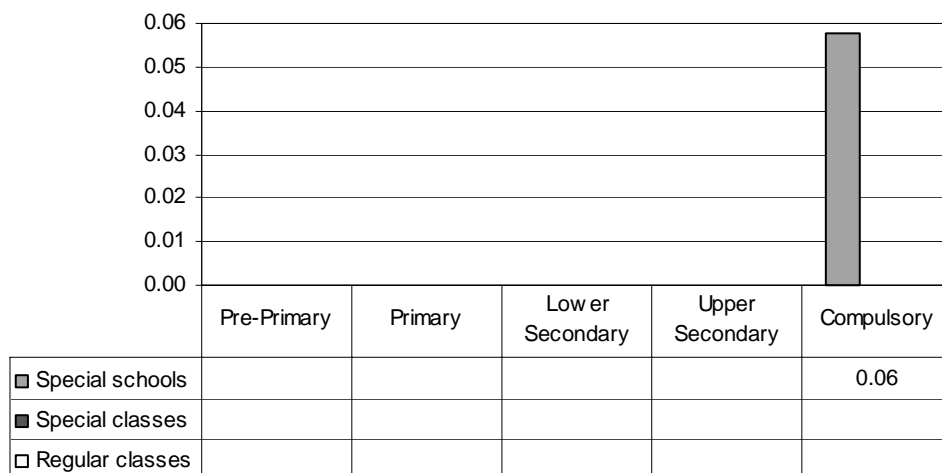
Total – Category 5. Total percentage of students with metabolic disorders falling within the resources definition



Note: Special schools data in pre-primary, primary, lower secondary and upper secondary education are included in compulsory education data.
Special classes data are not applicable.
Regular classes data in pre-primary education are missing.

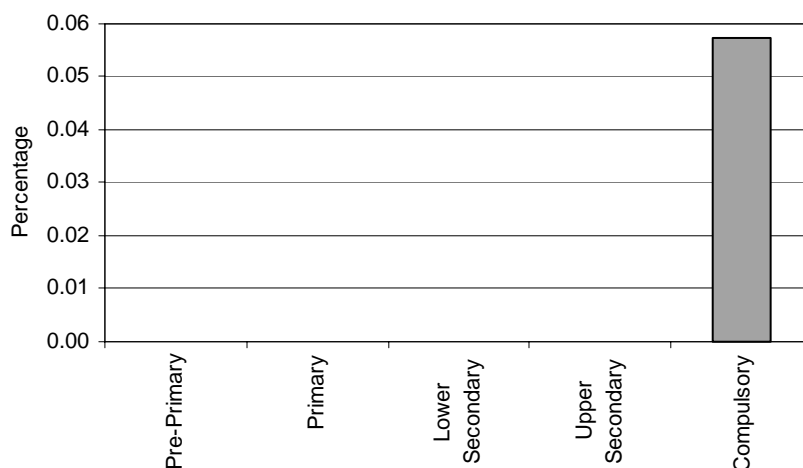
Category 6 Cross-national Category A - Disorders in this category concern not only the ear but also its ancillary parts and its functions. The most important sub-division is that of hearing impairment. The term “deaf” should only be applied to persons whose hearing impairment is such that it cannot be helped by any hearing aid. Like blindness, deafness is a serious sensory impairment.

Proportion of students who are deaf by phases of education in special schools, special classes and regular classes



Note: Special schools data in pre-primary, primary, lower secondary and upper secondary education are included in compulsory education data. Special classes and regular classes data are not applicable.

Special Schools – Category 6. Total percentage of students who are deaf falling within the resources definition, by phase of education



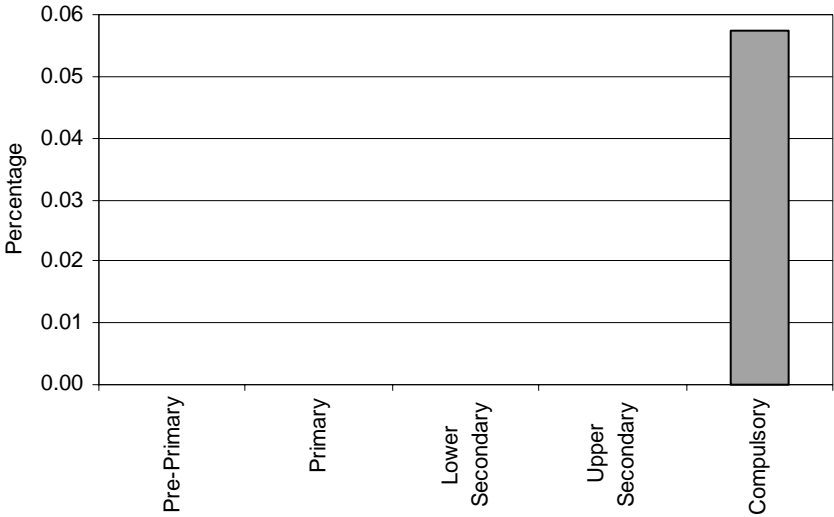
Note: Special schools data in pre-primary, primary, lower secondary and upper secondary education are included in compulsory education data.

Special Classes – Category 6. Deaf

NOT APPLICABLE

Regular Classes – Category 6. Deaf
NOT APPLICABLE

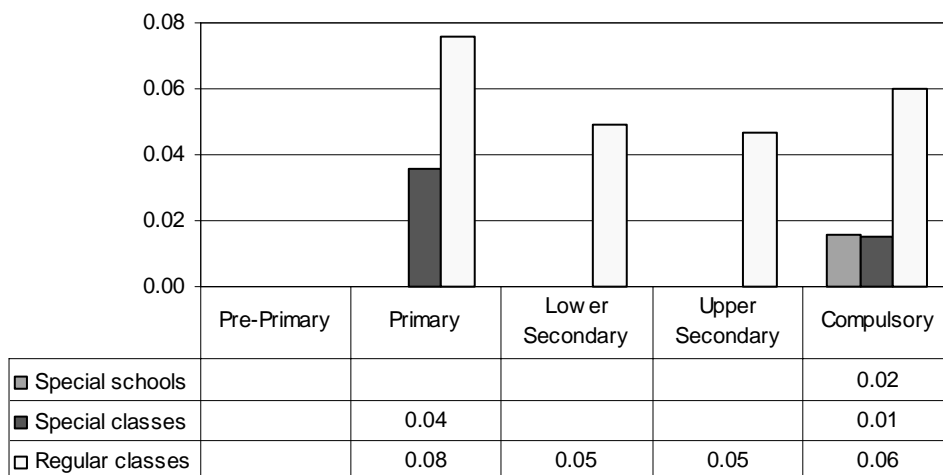
Total – Category 6. Total percentage of students who are deaf falling within the resources definition



Note: Special schools data in pre-primary, primary, lower secondary and upper secondary education are included in compulsory education data.
Special classes and regular classes data are not applicable.

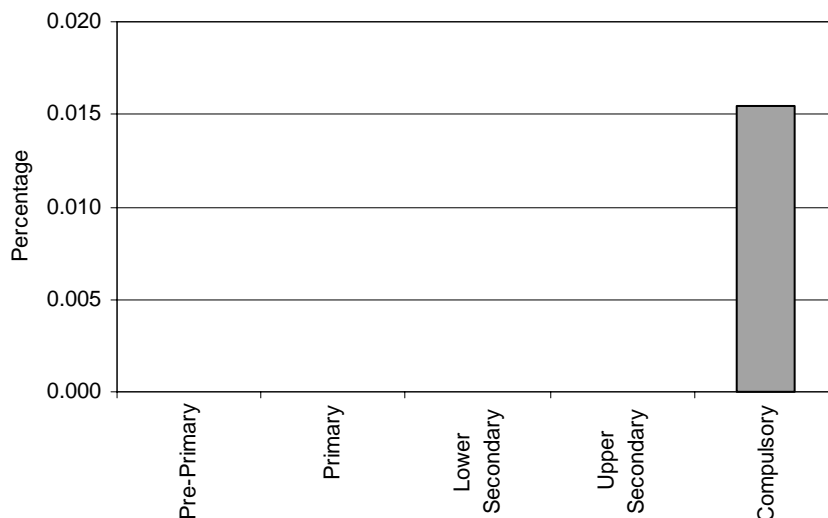
Category 7 Cross-national Category A - Disorders in this category concern not only the ear but also its ancillary parts and functions. The most important sub-division is that of hearing impairment.

Proportion of students with partially hearing by phases of education in special schools, special classes and regular classes



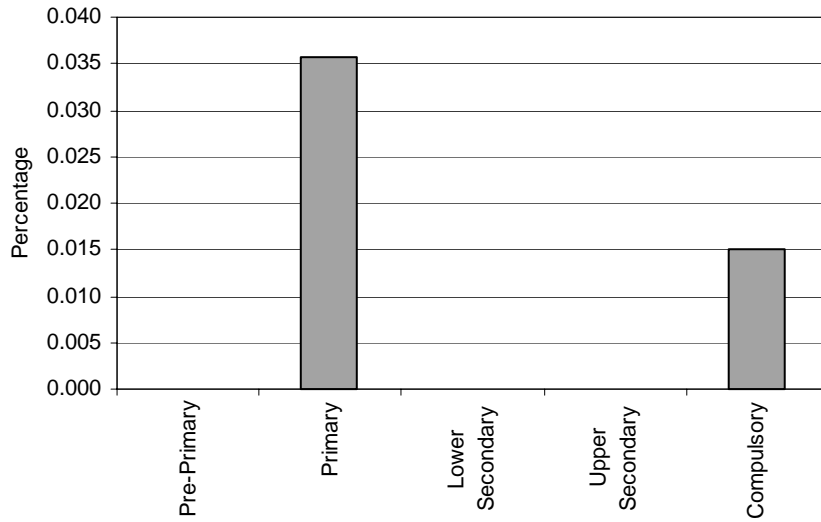
Note: Special schools data in pre-primary, primary, lower secondary and upper secondary education are included in compulsory education data.
 Special classes data in pre-primary, lower secondary and upper secondary education are not applicable.
 Regular classes data in pre-primary education are missing.

Special Schools – Category 7. Total percentage of students who are partially hearing falling within the resources definition, by phase of education



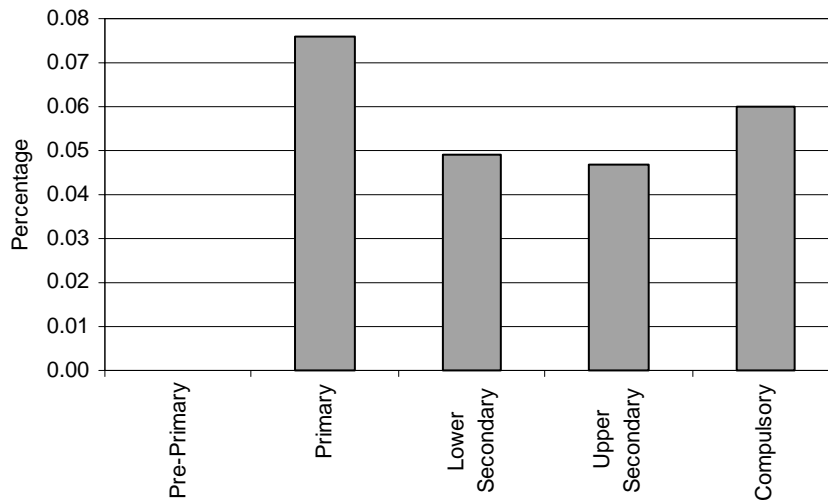
Note: Special schools data in pre-primary, primary, lower secondary and upper secondary education are included in compulsory education data.

Special Classes – Category 7. Total percentage of students who are partially hearing falling within the resources definition, by phase of education



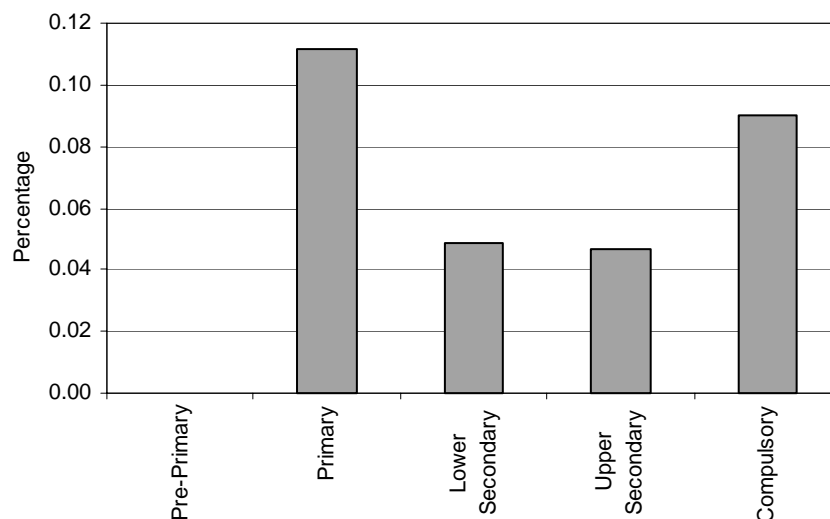
Note: Special classes data in pre-primary, lower secondary and upper secondary education are not applicable.

Regular Classes – Category 7. Total percentage of students who are partially hearing falling within the resources definition, by phase of education



Note: Regular classes data in pre-primary education are missing.

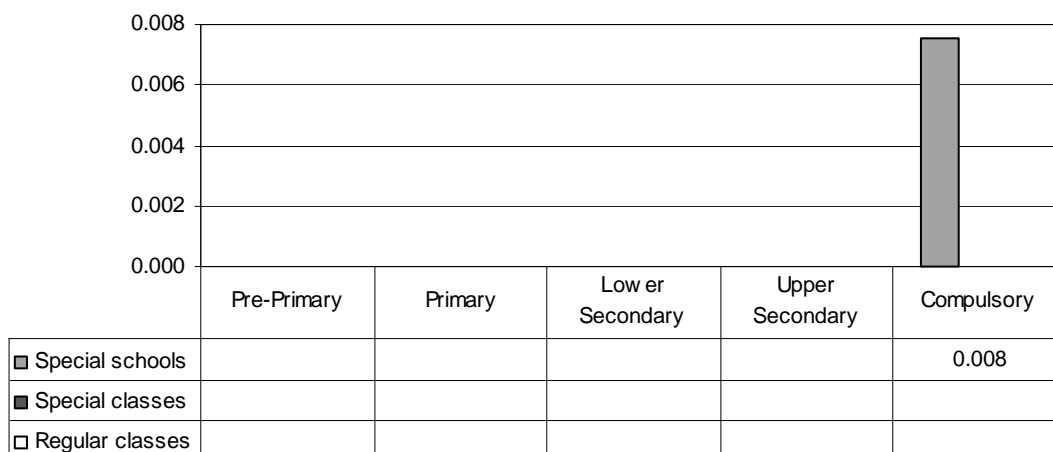
Total – Category 7. Total percentage of students who are partially hearing falling within the resources definition



Note: Special schools data in pre-primary, primary, lower secondary and upper secondary education are included in compulsory education data.
 Special classes data in pre-primary, lower secondary and upper secondary education are not applicable.
 Regular classes data in pre-primary education are missing.

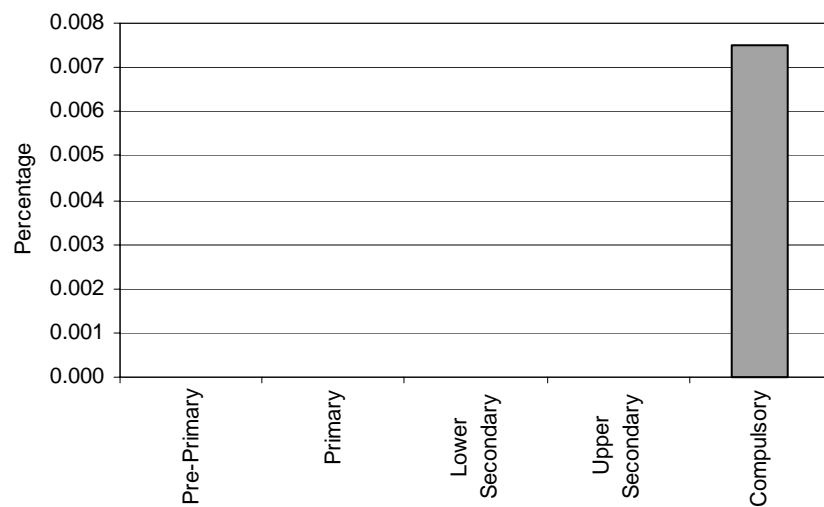
Category 8 Cross-national Category A - Blindness is a serious sensory impairment. Such impairment may be marked (very poor vision or partial blindness), almost total (severe or almost total blindness) or total (no perception of light). It may affect one eye or both.

Proportion of students who are blind by phases of education in special schools, special classes and regular classes



Note: Special schools data in pre-primary, primary, lower secondary and upper secondary education are included in compulsory education data.
 Special classes and regular classes data are not applicable.

Special Schools – Category 8. Total percentage of students who are blind falling within the resources definition, by phase of education

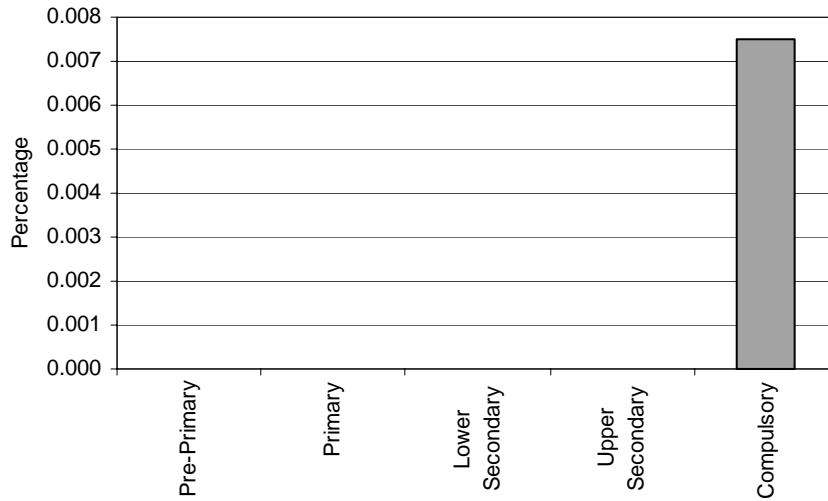


Note: Special schools data in pre-primary, primary, lower secondary and upper secondary education are included in compulsory education data.

Special Classes – Category 8. Blind
NOT APPLICABLE

Regular Classes – Category 8. Blind
NOT APPLICABLE

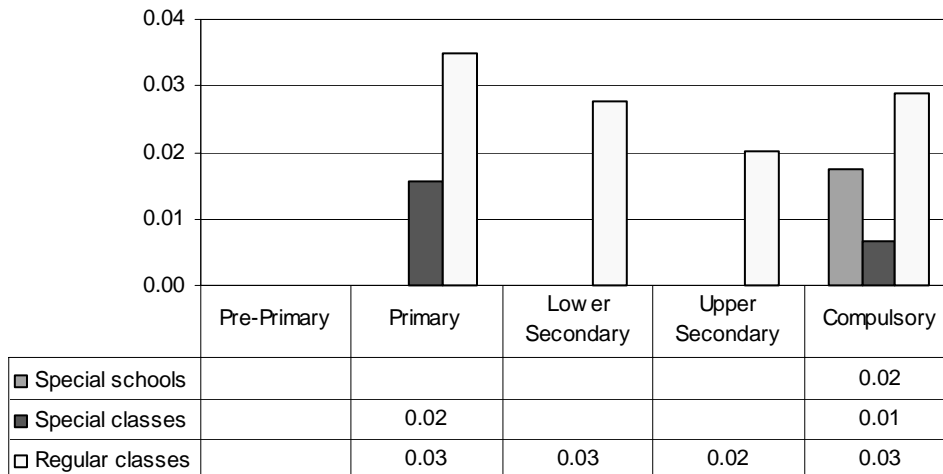
Total – Category 8. Total percentage of students who are blind falling within the resources definition



Note: Special schools data in pre-primary, primary, lower secondary and upper secondary education are included in compulsory education data.
Special classes and regular classes data are not applicable.

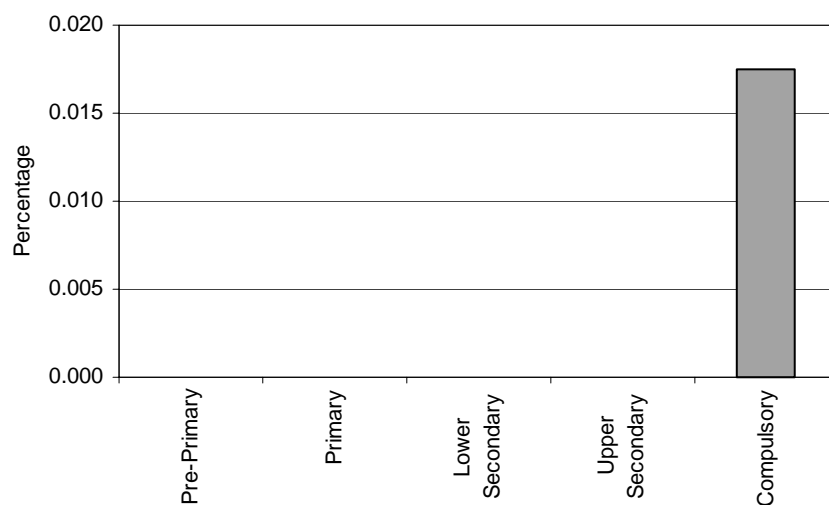
Category 9 Cross-national Category A - Other visual impairments include astigmatism, accommodation deficiency, diplopia (strabismus), amblyopia and sensitivity to light.

Proportion of students who are partially sighted by phases of education in special schools, special classes and regular classes



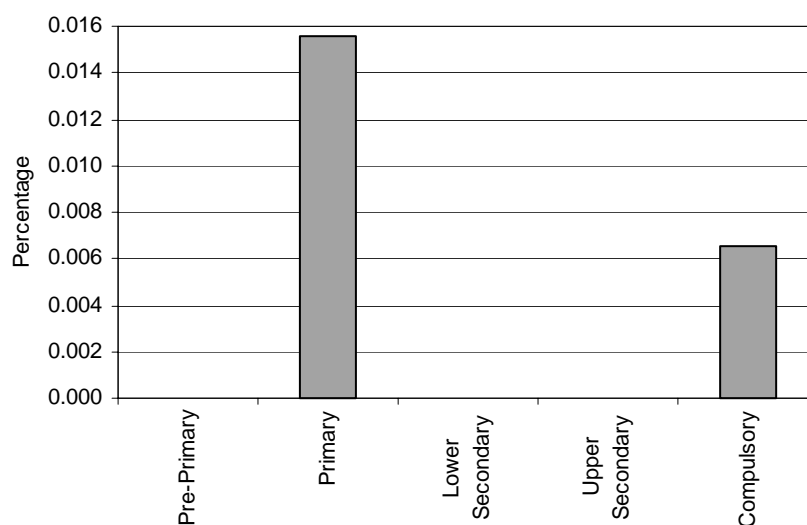
Note: Special schools data in pre-primary, primary, lower secondary and upper secondary education are included in compulsory education data.
Special classes data in pre-primary, lower secondary and upper secondary education are not applicable.
Regular classes data in pre-primary education are missing.

Special Schools – Category 9. Total percentage of students who are partially sighted falling within the resources definition, by phase of education



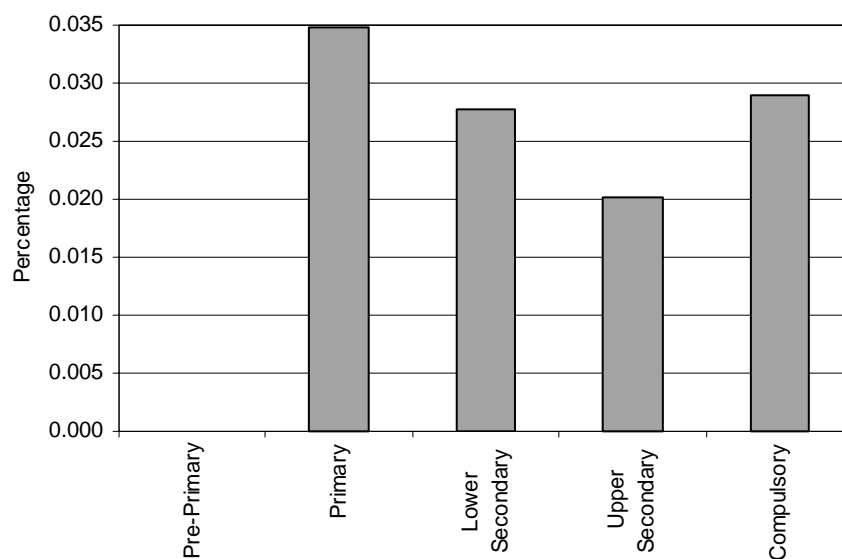
Note: Special schools data in pre-primary, primary, lower secondary and upper secondary education are included in compulsory education data.

Special Classes – Category 9. Total percentage of students who are partially sighted falling within the resources definition, by phase of education



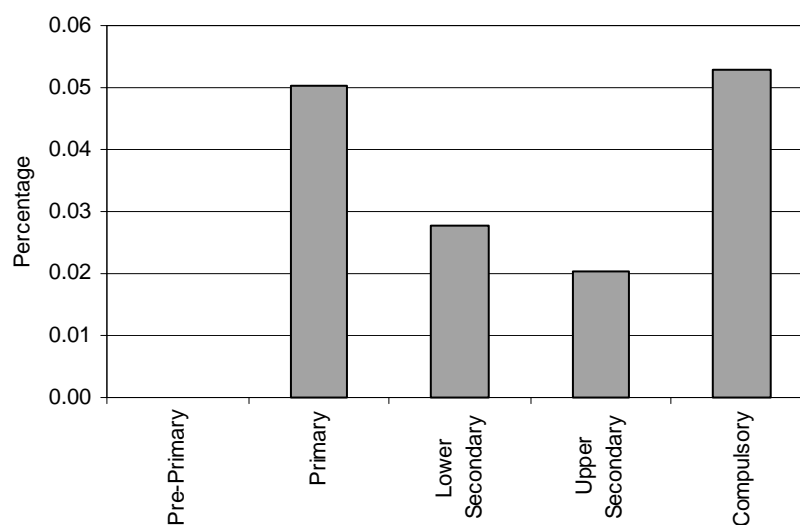
Note: Special classes data in pre-primary, lower secondary and upper secondary education are not applicable.

Regular Classes – Category 9. Total percentage of students who are partially sighted falling within the resources definition, by phase of education



Note: Regular classes data in pre-primary education are missing.

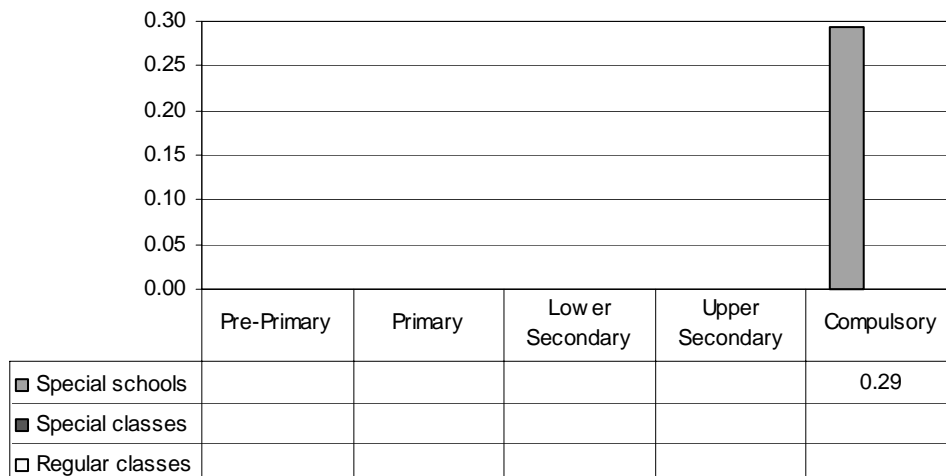
Total – Category 9. Total percentage of students who are partially sighted falling within the resources definition



Note: Special schools data in pre-primary, primary, lower secondary and upper secondary education are included in compulsory education data.
 Special classes data in pre-primary, lower secondary and upper secondary education are not applicable.
 Regular classes data in pre-primary education are missing.

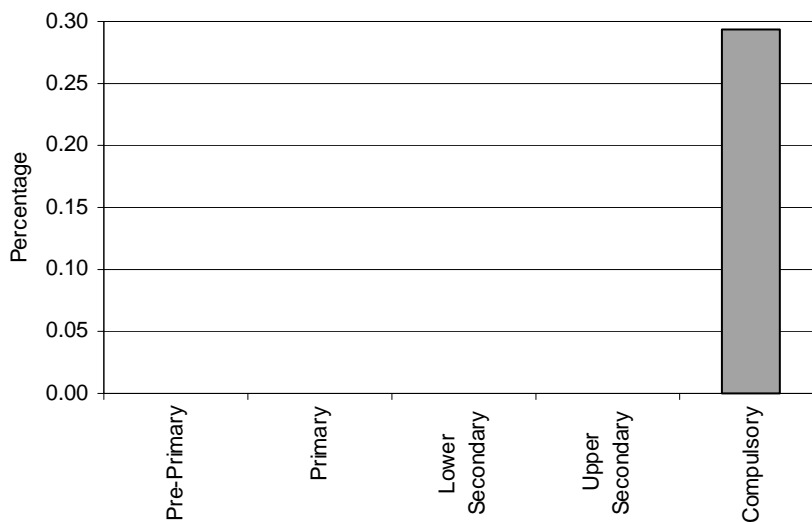
Category 10 Cross-national Category A - Neuropsychological disorders have been defined to include any interference with the basic elements of the mental process. This being so, the functions listed are those which normally involve the presence of basic neuropsychological and psychological mechanisms.

Proportion of students with other neuropsychological disorders by phases of education in special schools, special classes and regular classes



Note: Special schools data in pre-primary, primary, lower secondary and upper secondary education are included in compulsory education data.
Special classes and regular classes data are not applicable.

Special Schools – Category 10. Total percentage of students with other neuropsychological disorders falling within the resources definition, by phase of education



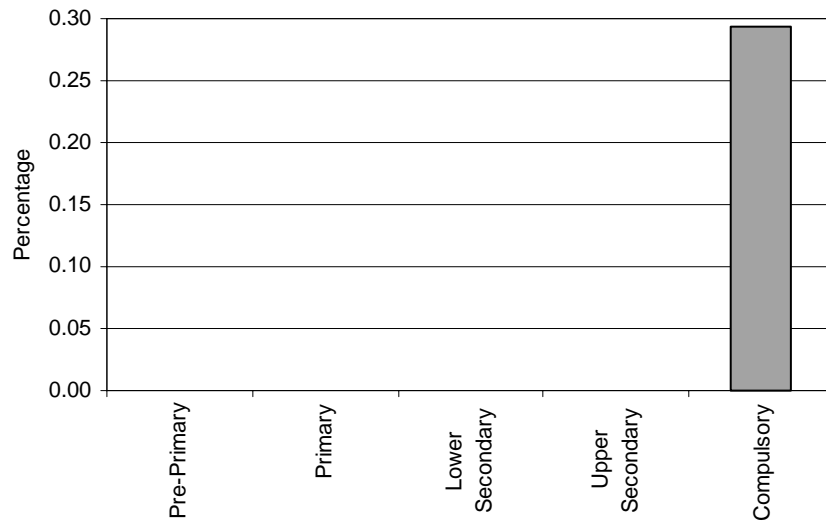
Note: Special schools data in pre-primary, primary, lower secondary and upper secondary education are included in compulsory education data.

Special Classes – Category 10. Other neuropsychological disorders
NOT APPLICABLE

Special Classes – Category 10. Other neuropsychological disorders

NOT APPLICABLE

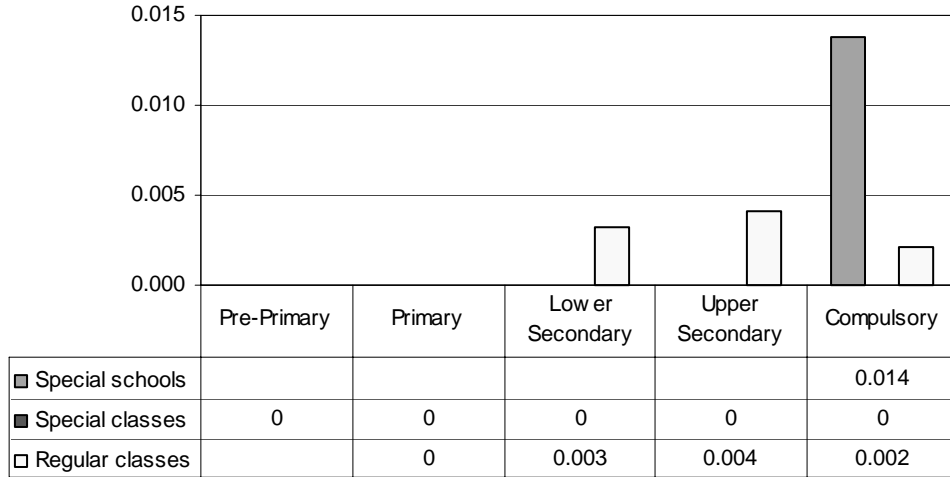
Total – Category 10. Total percentage of students with other neuropsychological disorders falling within the resources definition



Note: Special schools data in pre-primary, primary, lower secondary and upper secondary education are included in compulsory education data.
Special classes and regular classes data are not applicable.

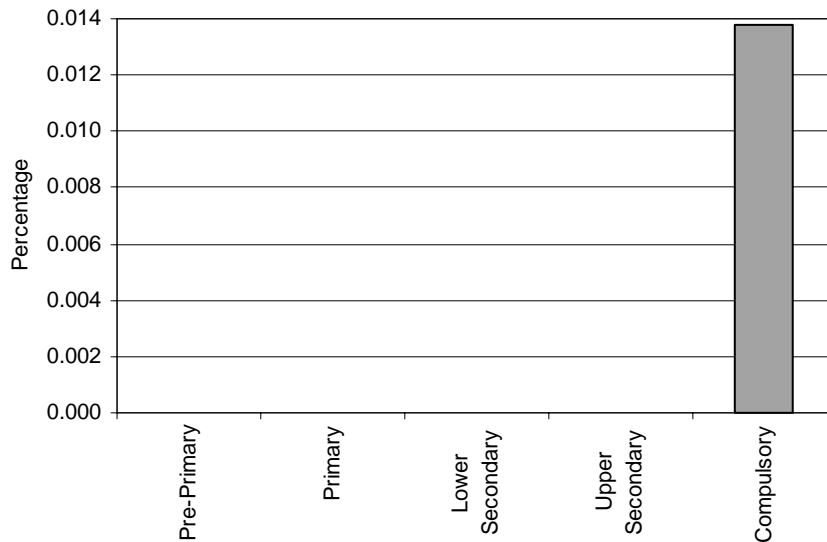
Category 11 Cross-national Category A - Speech disorders or impairment include artificial larynx, severe dysarthria, lack of voice expression and stuttering; while language disorders or impairment include central impairment of the visual function with inability to communicate (e.g. severe dyslexia).

Proportion of students with speech & language disorders by phases of education in special schools, special classes and regular classes



Note: Special schools data in pre-primary, primary, lower secondary and upper secondary education are included in compulsory education data.
Regular classes data in pre-primary education are missing.

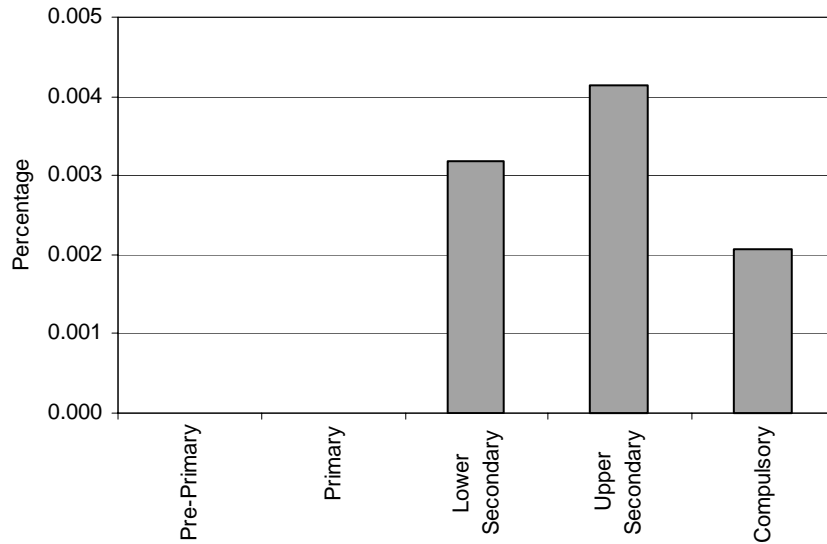
Special Schools – Category 11. Total percentage of students with speech and language disorders falling within the resources definition, by phase of education



Note: Special schools data in pre-primary, primary, lower secondary and upper secondary education are included in compulsory education data.

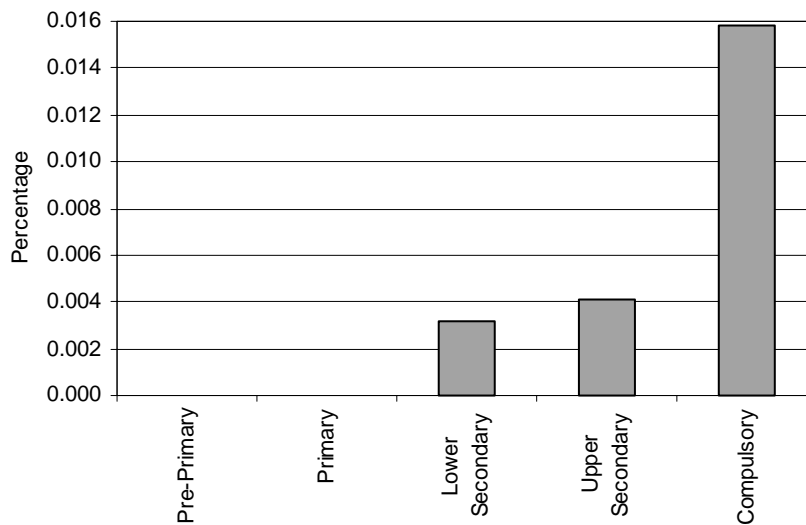
Special Classes – Category 11. Speech and language disorders
ZERO

Regular classes – Category 11. Total percentage of students with speech and language disorders falling within the resources definition, by phase of education



Note: Regular classes data in pre-primary education are missing.

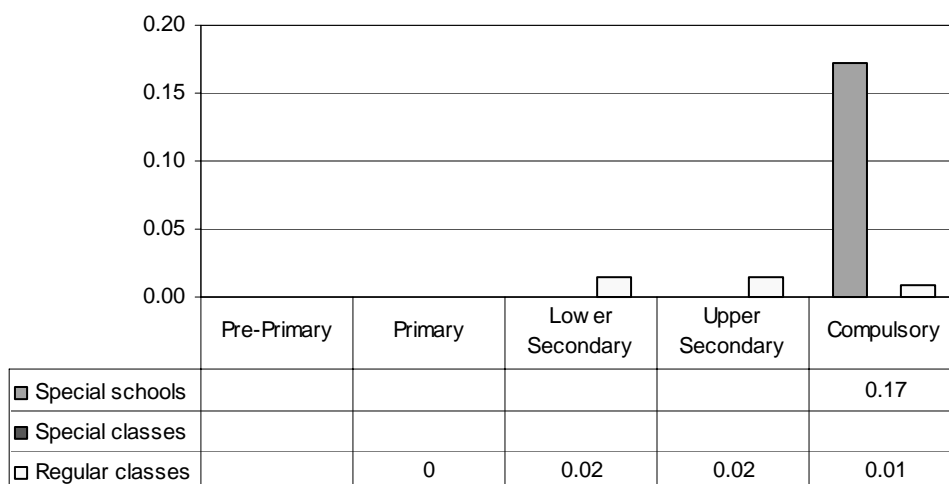
Total – Category 11. Total percentage of students with speech and language disorders falling within the resources definition



Note: Special schools data in pre-primary, primary, lower secondary and upper secondary education are included in compulsory education data.
Regular classes data in pre-primary education are missing.

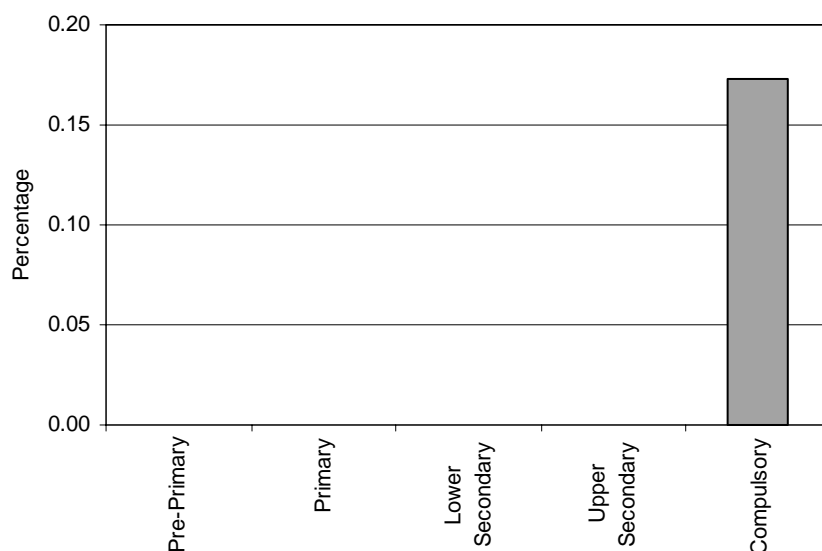
Category 12 Cross-national Category A - Other deficiencies are all those not mentioned above.

Proportion of students with other deficiencies by phases of education in special schools, special classes and regular classes



Note: Special schools data in pre-primary, primary, lower secondary and upper secondary education are included in compulsory education data.
 Special classes data are not applicable.
 Regular classes data in pre-primary education are missing.

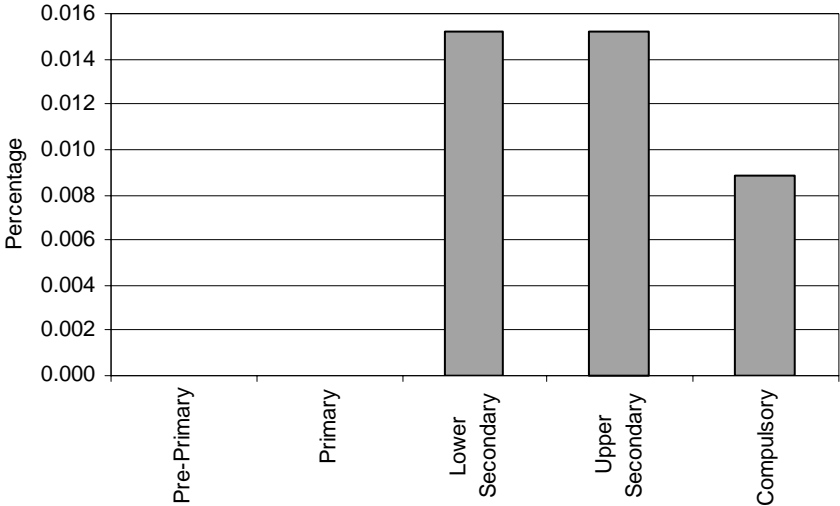
Special Schools – Category 12. Total percentage of students with other deficiencies falling within the resources definition, by phase of education



Note: Special schools data in pre-primary, primary, lower secondary and upper secondary education are included in compulsory education data.

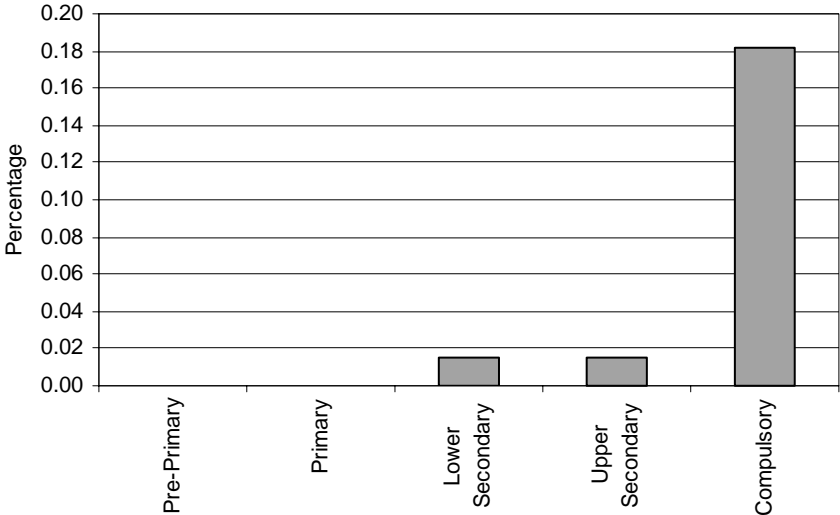
Special Classes – Category 12. Other deficiencies
NOT APPLICABLE

Regular Classes – Category 12. Total percentage of students with other deficiencies falling within the resources definition, by phase of education



Note: Regular classes data in pre-primary education are missing.

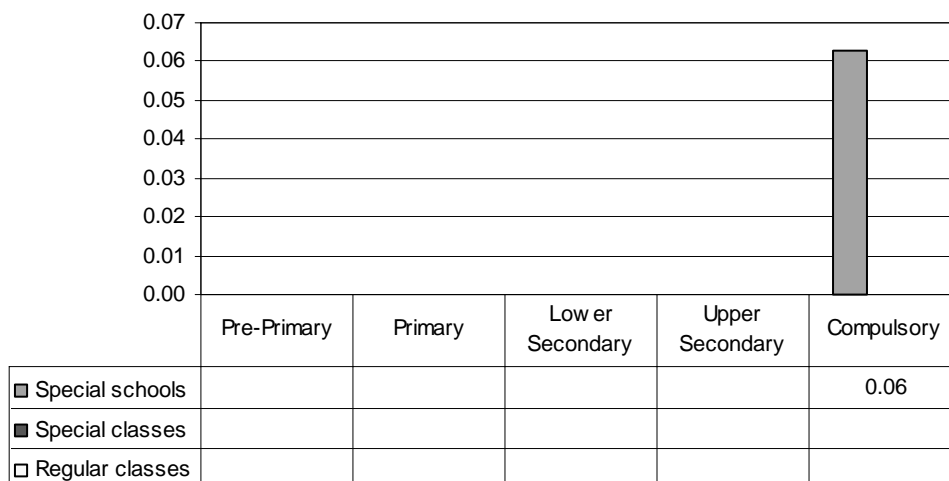
Total – Category 12. Total percentage of students with other deficiencies falling within the resources definition



Note: Special schools data in pre-primary, primary, lower secondary and upper secondary education are included in compulsory education data.
Special classes data are not applicable.
Regular classes data in pre-primary education are missing.

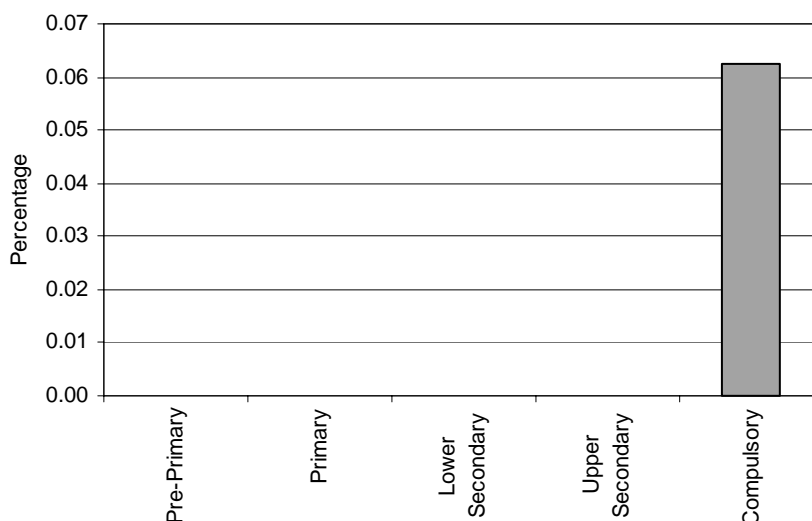
Category 13 Cross-national Category A - Children or young people in special educational establishments suffer from a main handicap, which is usually the reason they are attending special classes. But they may suffer from other disorders in addition to this main one.

Proportion of students who are multiply handicapped by phases of education in special schools, special classes and regular classes



Note: Special schools data in pre-primary, primary, lower secondary and upper secondary education are included in compulsory education data. Special classes and regular classes data are not applicable.

Special Schools – Category 13. Total percentage of students who are multiply handicapped falling within the resources definition, by phase of education

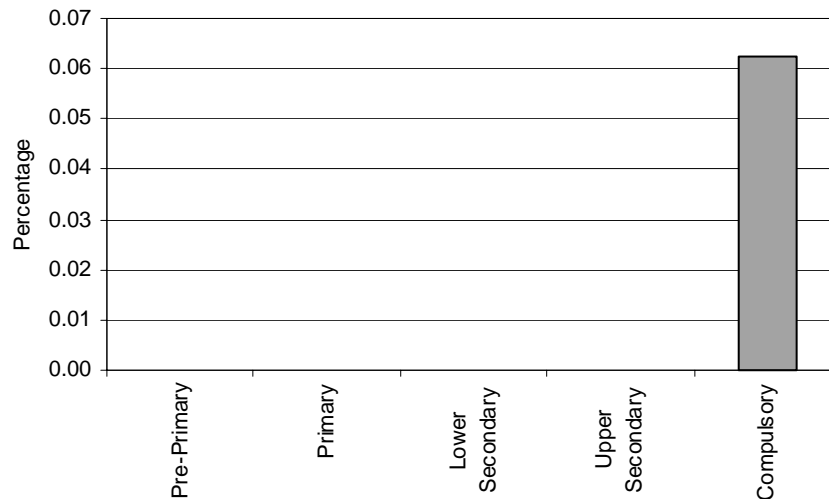


Note: Special schools data in pre-primary, primary, lower secondary and upper secondary education are included in compulsory education data.

**Special Classes – Category 13. Multiply
handicapped**
NOT APPLICABLE

**Regular Classes – Category 13. Multiply
handicapped**
NOT APPLICABLE

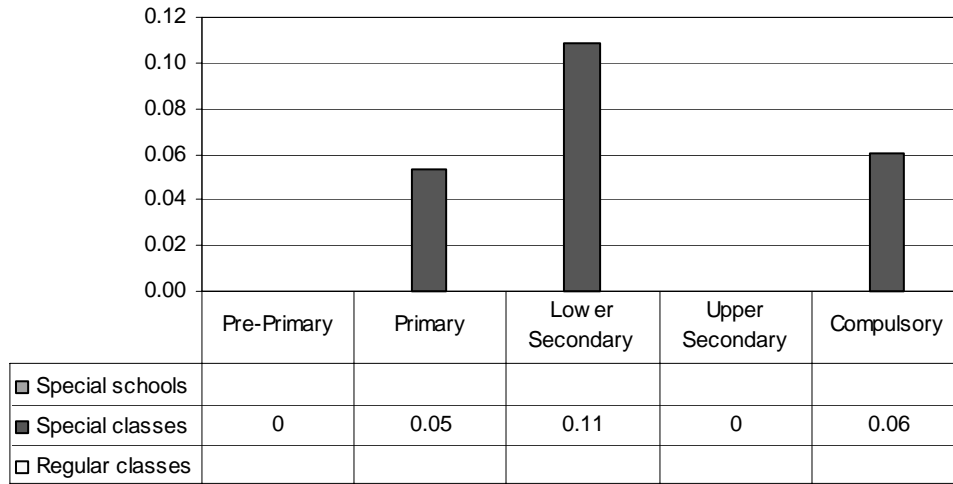
**Total – Category 13. Total percentage of students who are multiply handicapped falling
within the resources definition**



Note: Special schools data in pre-primary, primary, lower secondary and upper secondary education are included in compulsory education data.
Special classes and regular classes data are not applicable.

Category 14 Cross-national Category C - Initiation classes (CLINs) have been created in primary schools for non-French speaking pupils of foreign nationality. Reception classes, in 1st to 4th year secondary (but mainly 1st year), are offered to foreign pupils (in principle, non-French speaking, newly arrived in France and whose age corresponds to that of the school).

Proportion of students who are non-francophone by phases of education in special schools, special classes and regular classes

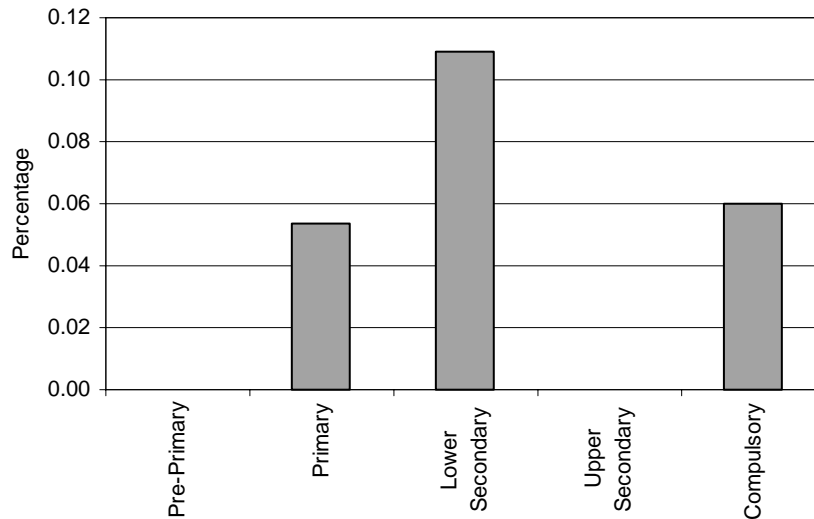


Note: Special schools and regular classes data are not applicable.

Special Schools – Category 14. Non-francophone students

NOT APPLICABLE

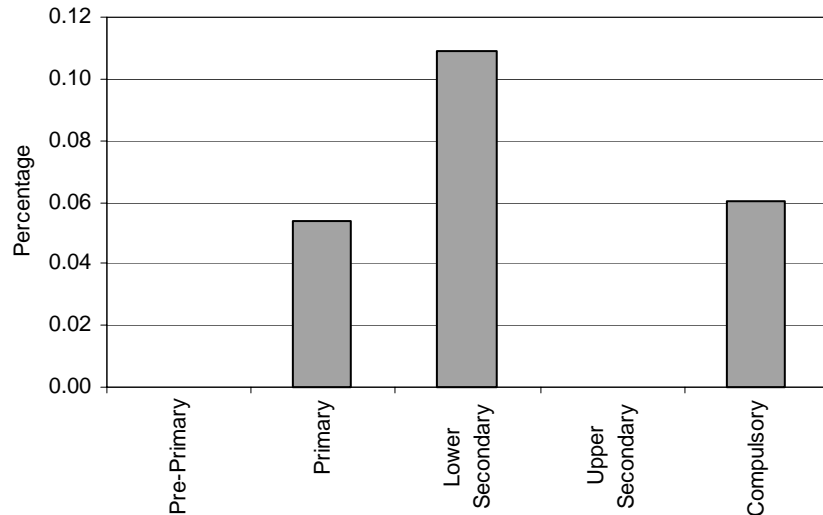
Special Classes – Category 14. Total percentage of students who are non-francophone falling within the resources definition, by phase of education



Regular Classes – Category 14. Non-francophone students

NOT APPLICABLE

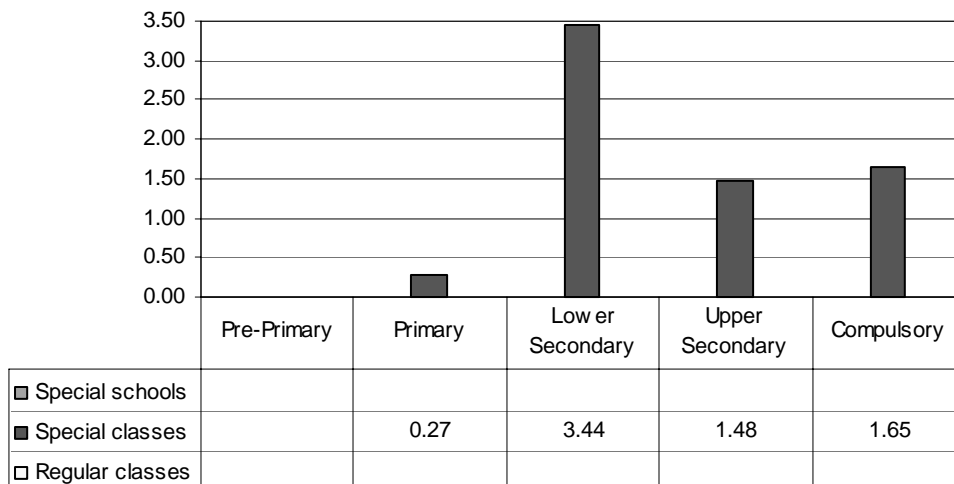
Total – Category 14. Total percentage of students who are non-francophone falling within the resources definition



Note: Special schools and regular classes data are not applicable.

Category 15 Cross-national Category B - Special 3rd year classes and 4th year vestibule classes (second level) provide assistance and support to pupils with problems at school and unable to derive benefit from the general and technical instruction normally given. Together with remedial classes, they form part of the system of assistance, support and insertion. SEGPA (special sections for general or occupational training) are incorporated into public and private secondary schools (usually lower secondary ones). They make it easier for pupils with learning difficulties to pursue their studies.

Proportion of students with learning difficulties by phases of education in special schools, special classes and regular classes

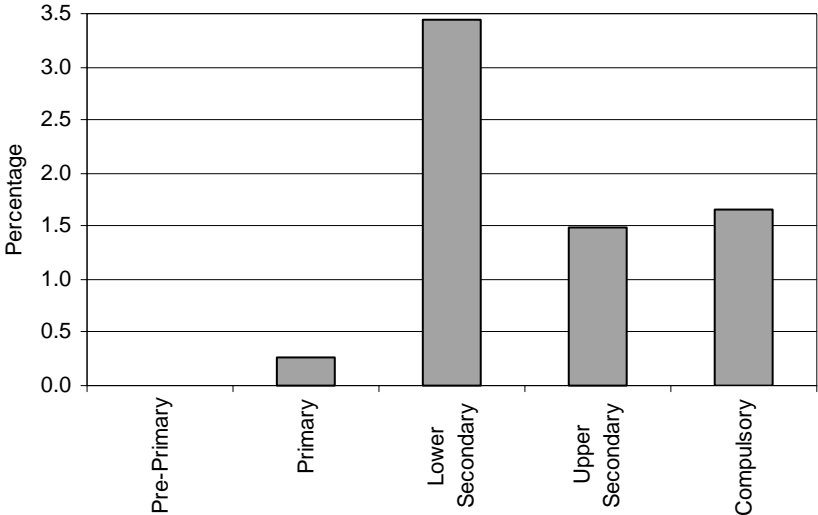


Note: Special schools and regular classes data are not applicable. Special classes data in pre-primary education are not applicable.

Special Schools – Category 15. Learning difficulties

NOT APPLICABLE

Special Classes – Category 15. Total percentage of students with learning difficulties falling within the resources definition, by phase of education

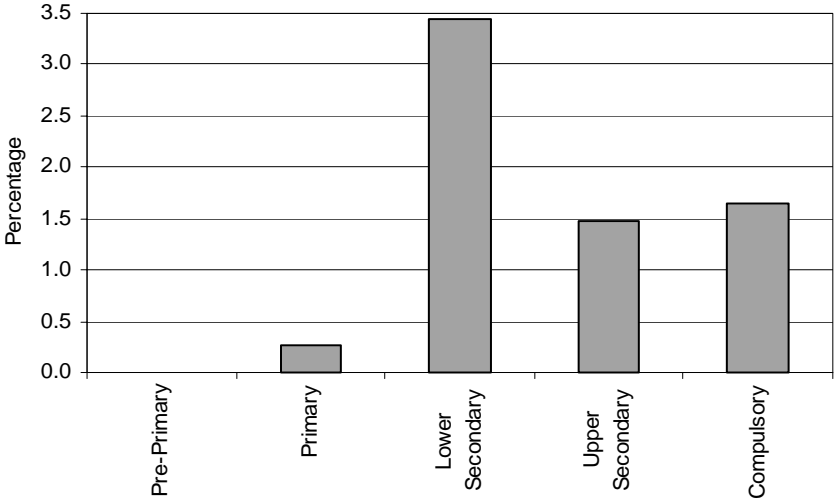


Note: Special classes data in pre-primary education are not applicable.

Regular Classes – Category 15. Learning difficulties

NOT APPLICABLE

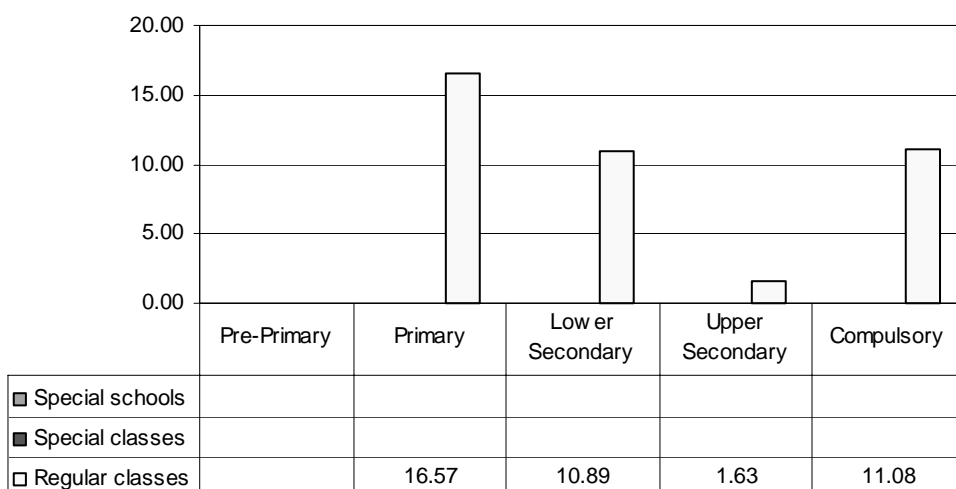
Total – Category 15. Total percentage of students with learning difficulties falling within the resources definition



Note: Special schools and regular classes data are not applicable. Special classes data in pre-primary education are not applicable.

Category 16 Cross-national Category C - “Zones of Education Prioritaires” (ZEP) are geographical surfaces - communes, districts - in which a policy of differentiated education is essential. Two types of criteria governed the delimitation of these underprivileged surfaces: first, school (rate of redoubling, density in vocational schools, classes of reception, etc.); second, socio-economic (low level of study of the parents, poverty, unemployment, discomfort of the dwellings, maladjustment to the language or the culture). “Zones of Education Prioritaires” are also and especially a community project of development centred on the school and aiming at make the children of popular medium enjoy fully their rights to education.

Proportion of students with disadvantages by phases of education in special schools, special classes and regular classes

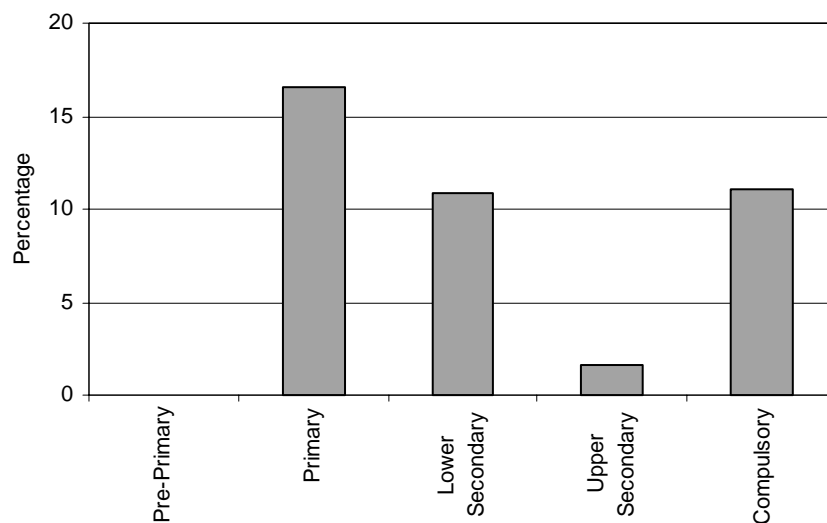


Note: Special schools and special classes data are not applicable.
Regular classes data in pre-primary education are missing.

Special Schools – Category 16. Disadvantaged children
NOT APPLICABLE

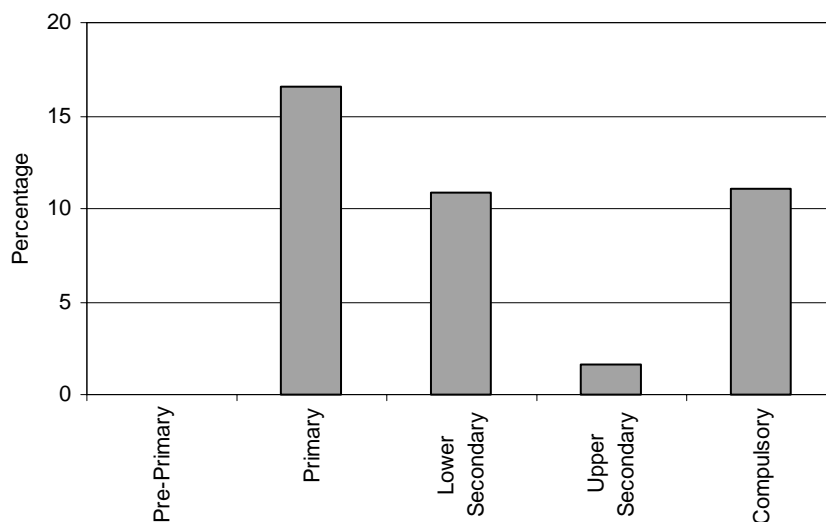
Special Classes – Category 16. Disadvantaged children
NOT APPLICABLE

Regular Classes – Category 16. Total percentage of students with disadvantages falling within the resources definition, by phase of education



Note: Regular classes data in pre-primary education are missing.

Total – Category 16. Total percentage of students with disadvantages falling within the resources definition



Note: Special schools and special classes data are not applicable.
Regular classes data in pre-primary education are missing.