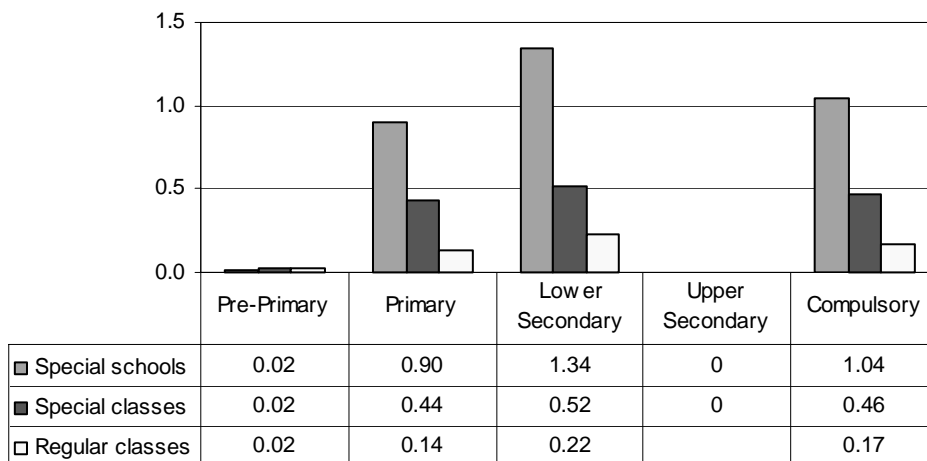


FINLAND

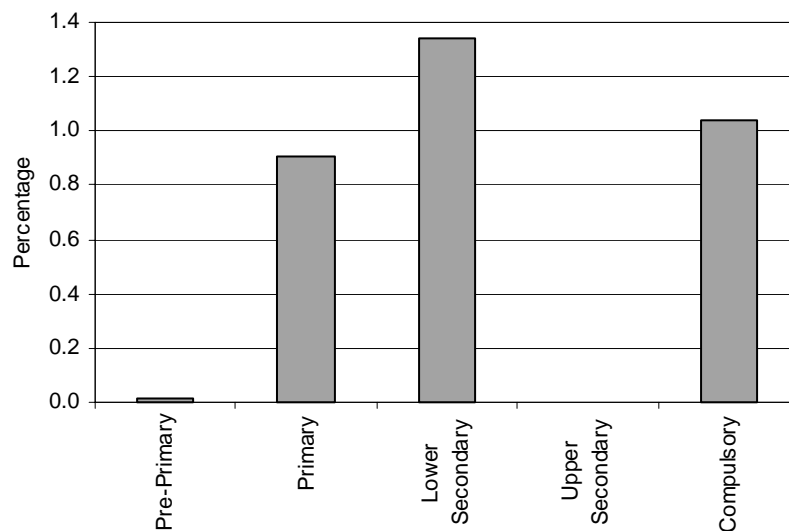
Category 1 Cross-national Category B - Education for children and young persons needing adjustment of curriculum and extra support (education for students with mild mental impairment). Adjustment may concern all or only some subjects.

Proportion of students with mild mental impairment by phases of education in special schools, special classes and regular classes

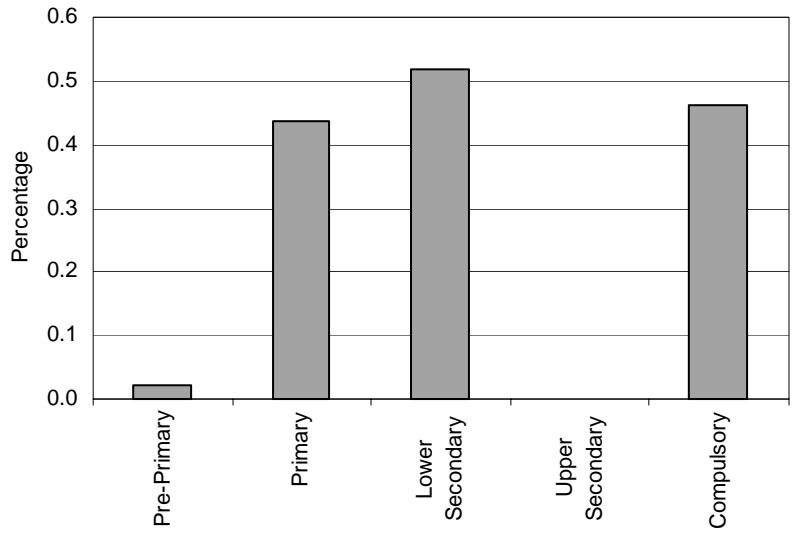


Note: Regular classes data in upper secondary education are missing.

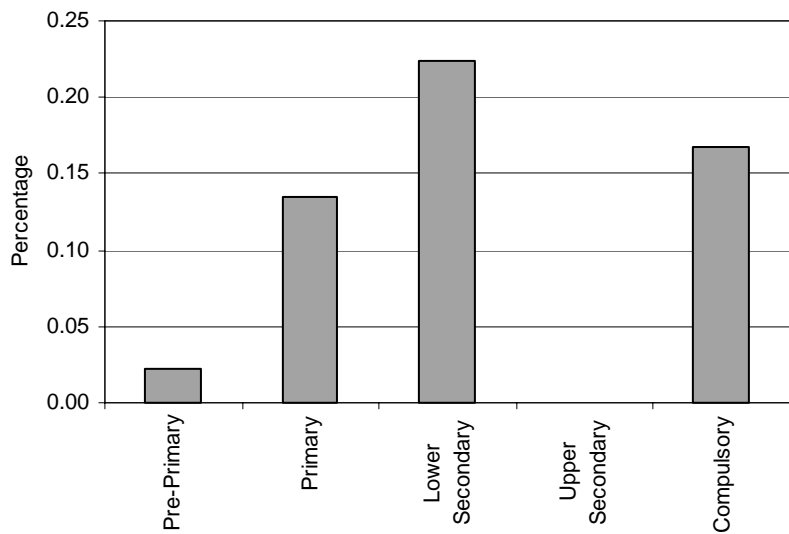
Special Schools - Category 1. Total percentage of students with mild mental impairment falling within the resources definition, by phase of education



Special Classes - Category 1. Total percentage of students with mild mental impairment falling within the resources definition, by phase of education

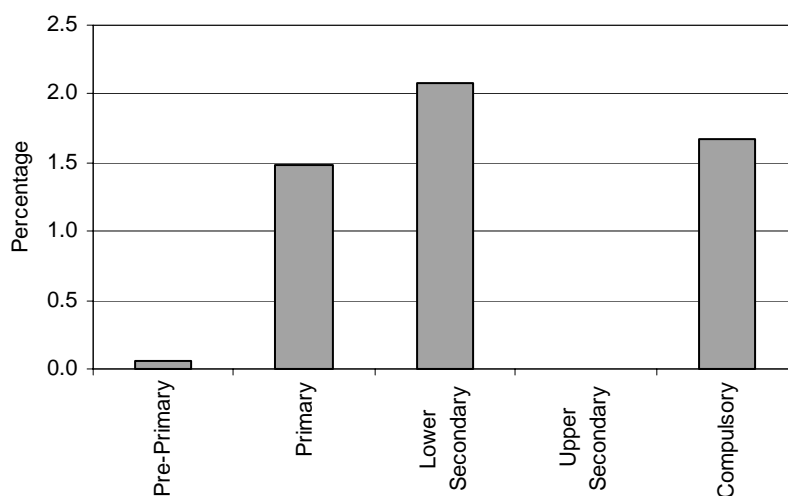


Regular Classes - Category 1. Total percentage of students with mild mental impairment falling within the resources definition, by phase of education



Note: Regular classes data in upper secondary education are missing.

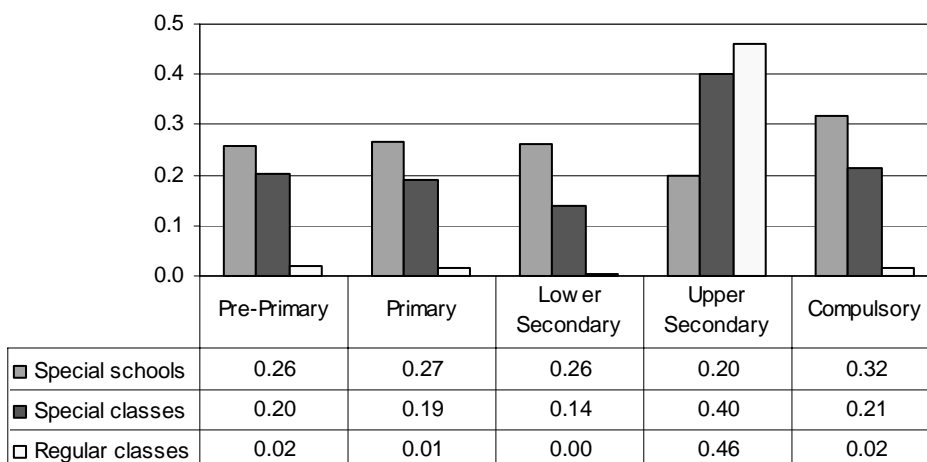
Total - Category 1. Total percentage of students with mild mental impairment falling within the resources definition



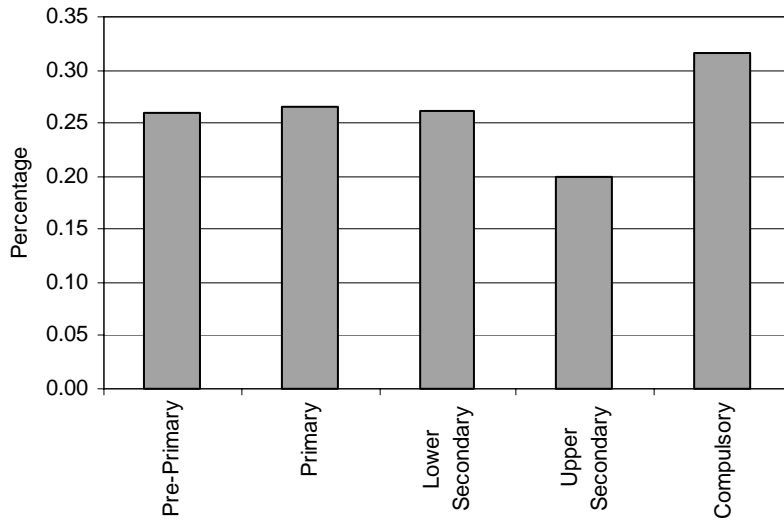
Note: Regular classes data in upper secondary education are missing.

Category 2 Cross-national Category A - Education for mentally-disabled students needing adjustment of curriculum and extensive support (education for students with moderate or severe mental impairment).

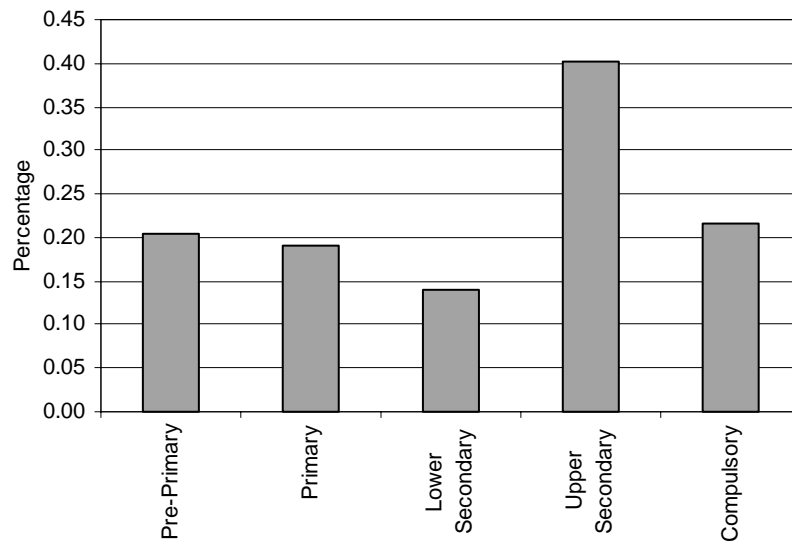
Proportion of students with moderate mental impairment by phases of education in special schools, special classes and regular classes



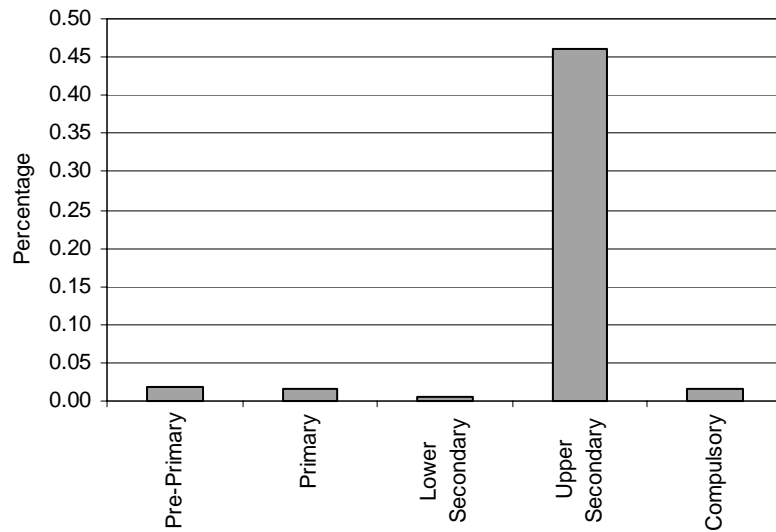
Special Schools - Category 2. Total percentage of students with moderate mental impairment falling within the resources definition, by phase of education



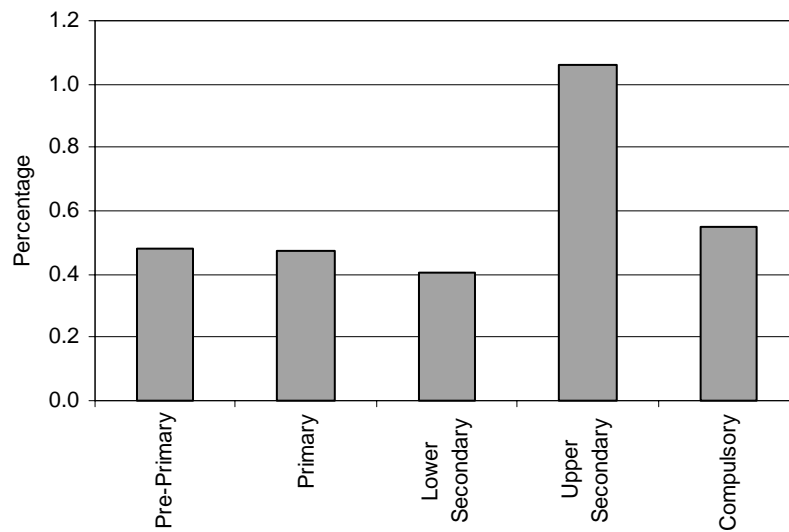
Special Classes - Category 2. Total percentage of students with moderate mental impairment falling within the resources definition, by phase of education



Regular Classes - Category 2. Total percentage of students with moderate mental impairment falling within the resources definition, by phase of education

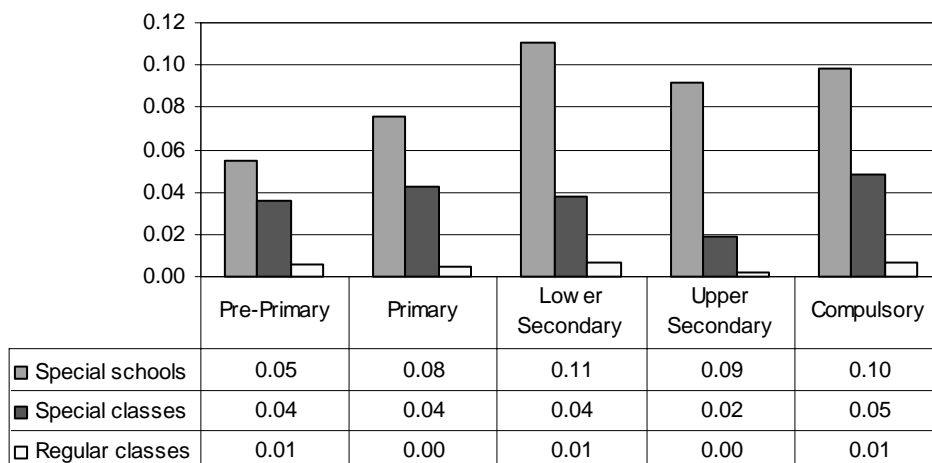


Total - Category 2. Total percentage of students with moderate mental impairment falling within the resources definition

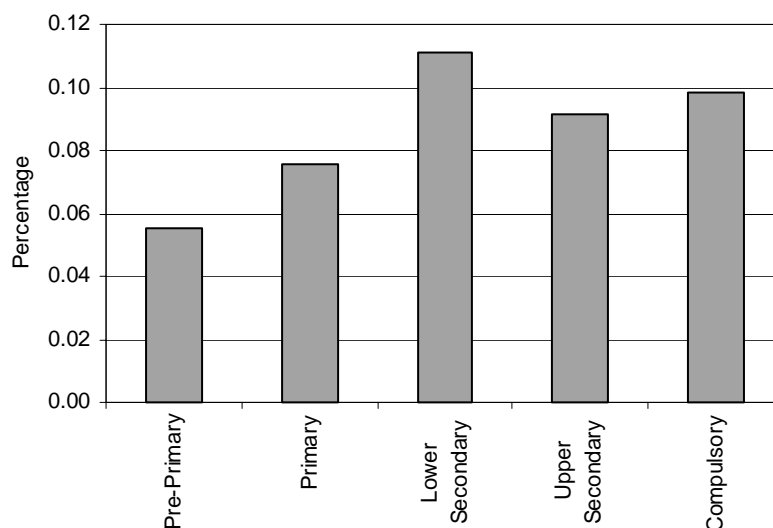


Category 3 Cross-national Category A - Education for mentally-disabled students with a curriculum based on training of everyday activities and with extensive support (education for students with most severe mental impairment).

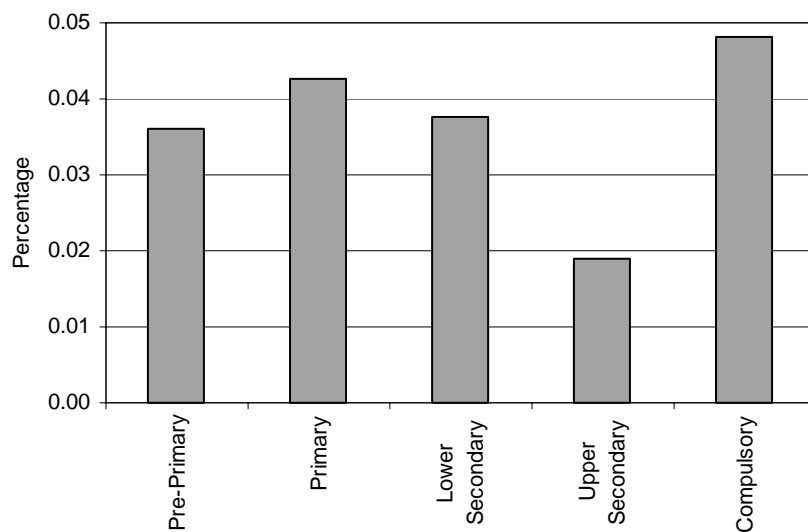
Proportion of students with most severe mental impairment by phases of education in special schools, special classes and regular classes



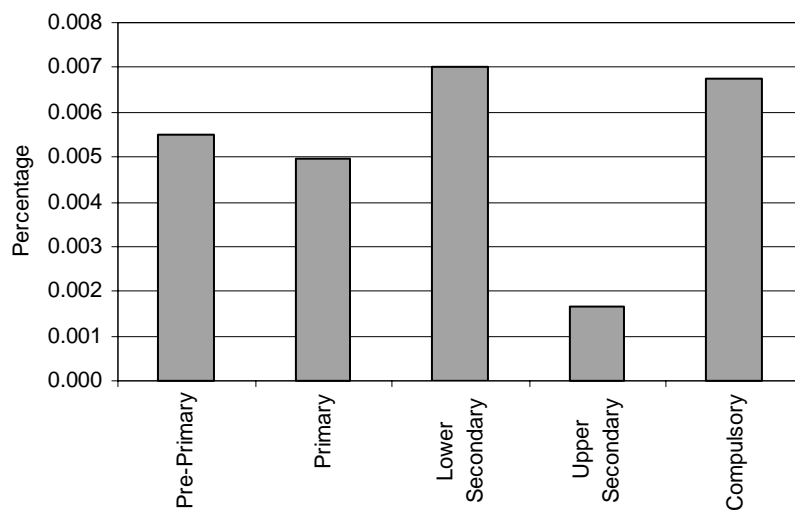
Special schools - Category 3. Total percentage of students with most severe mental impairment falling within the resources definition, by phase of education



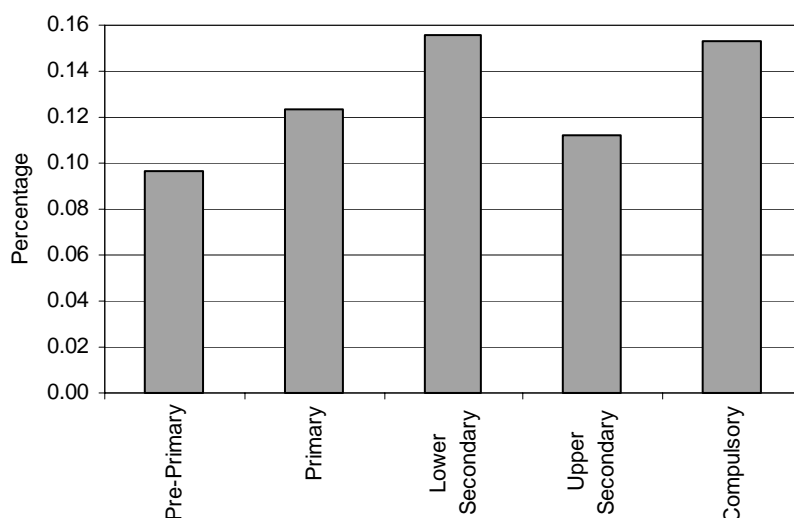
Special Classes - Category 3. Total percentage of students with most severe mental impairment falling within the resources definition, by phase of education



Regular Classes - Category 3. Total percentage of students with most severe mental impairment falling within the resources definition, by phase of education

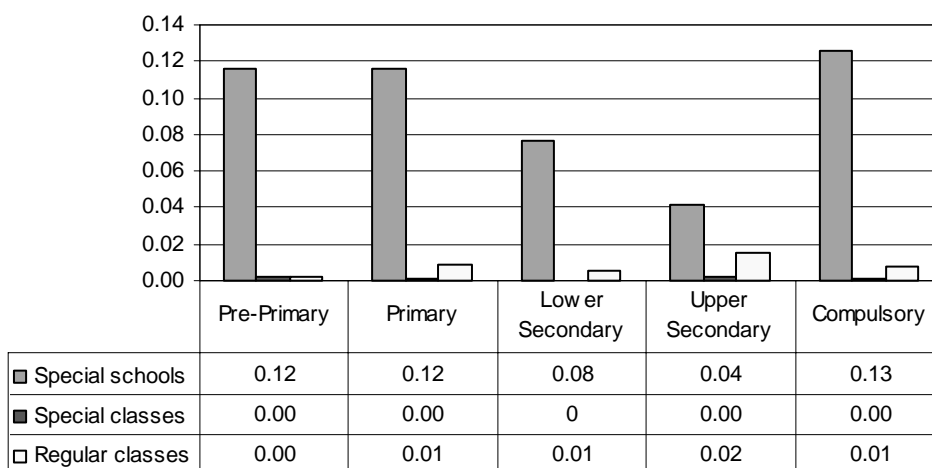


Total - Category 3. Total percentage of students with most severe mental impairment falling within the resources definition

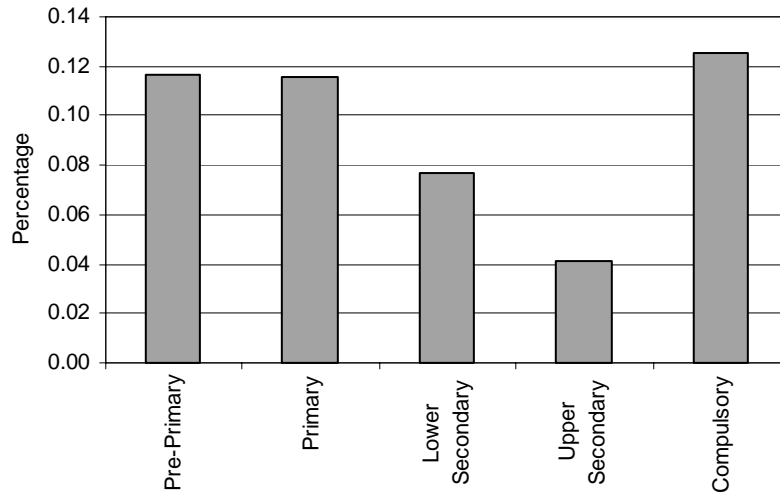


Category 4 Cross-national Category A - Education according to the curriculum for the hearing impaired.

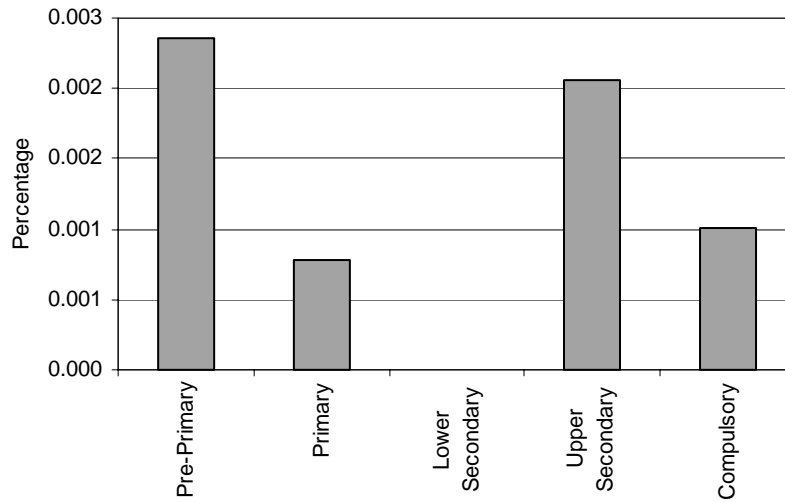
Proportion of students with hearing impairment by phases of education in special schools, special classes and regular classes



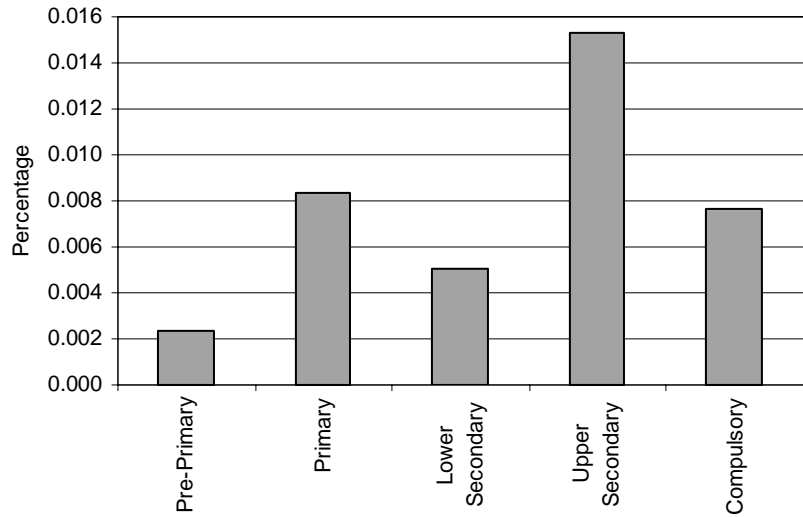
Special Schools - Category 4. Total percentage of students with hearing impairment falling within the resources definition, by phase of education



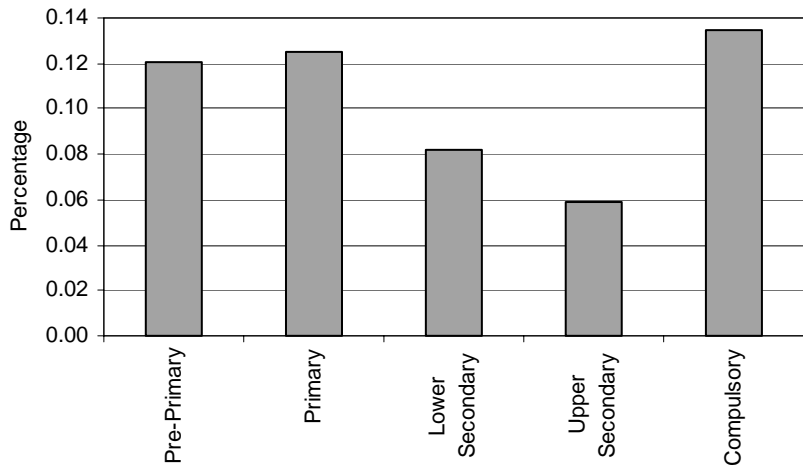
Special Classes - Category 4. Total percentage of students with hearing impairment falling within the resources definition, by phase of education



Regular Classes - Category 4. Total percentage of students with hearing impairment falling within the resources definition, by phase of education

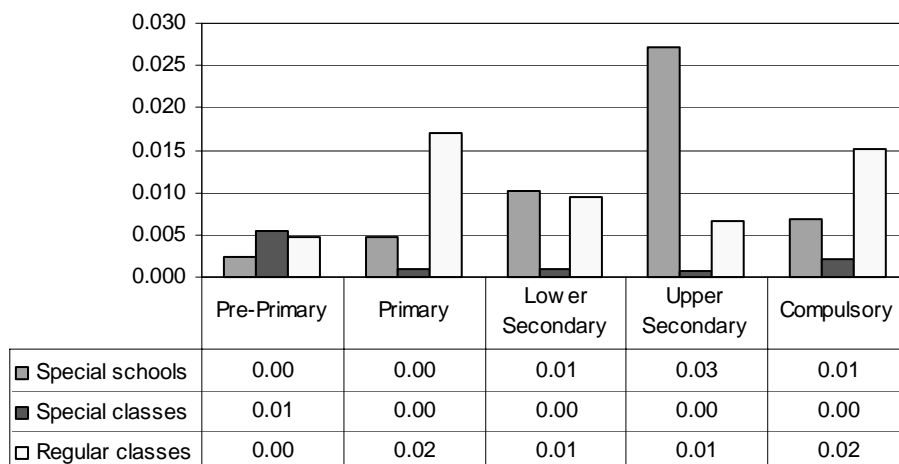


Total - Category 4. Total percentage of students with hearing impairment falling within the resources definition

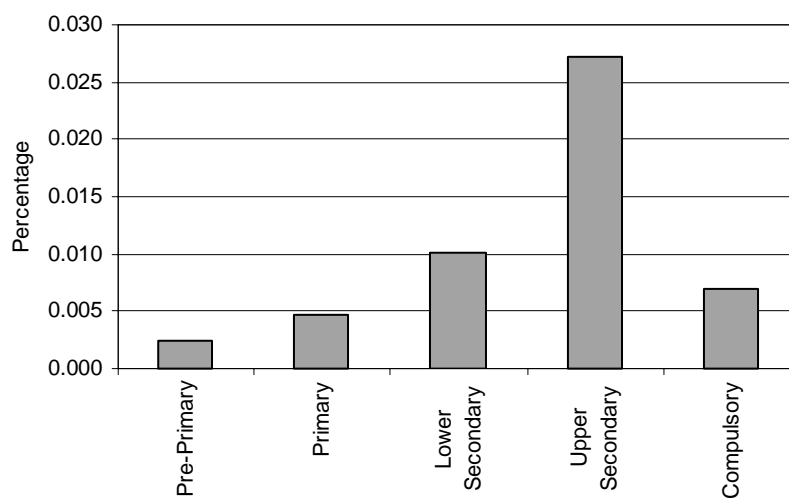


Category 5 Cross-national Category A - Education according to the curriculum for the visually impaired.

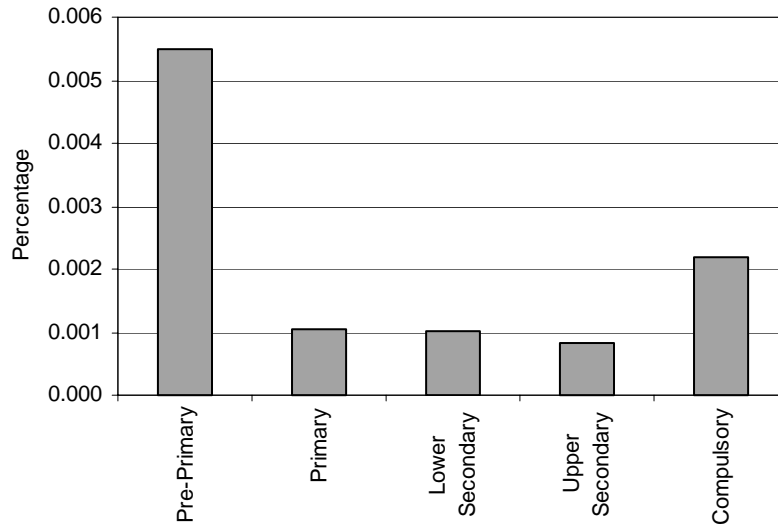
Proportion of students with visual impairment by phases of education in special schools, special classes and regular classes



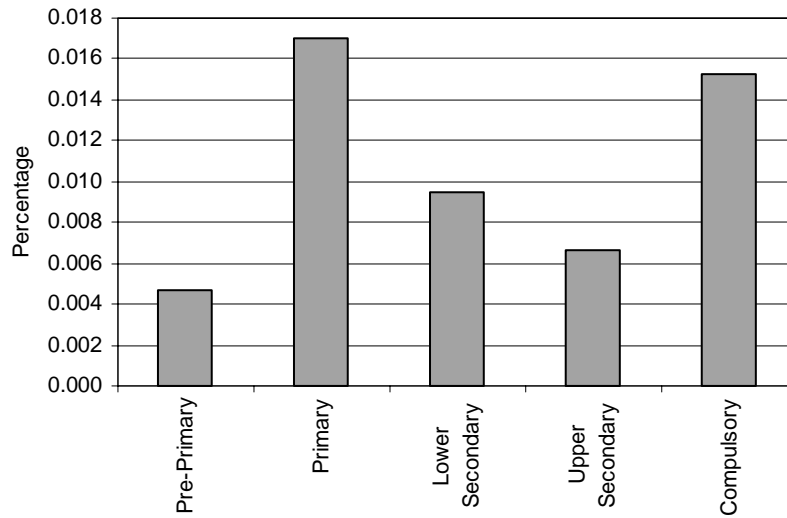
Special Schools - Category 5. Total percentage of students with visual impairment falling within the resources definition, by phase of education



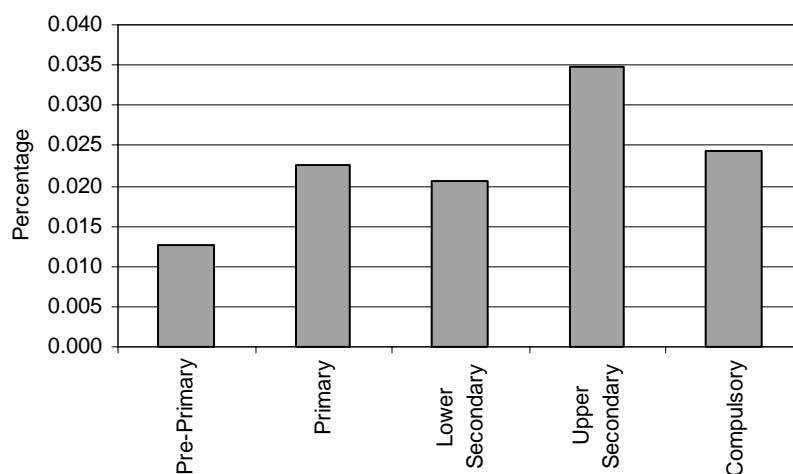
Special Classes - Category 5. Total percentage of students with visual impairment falling within the resources definition, by phase of education



Regular Classes - Category 5. Total percentage of students with visual impairment falling within the resources definition, by phase of education

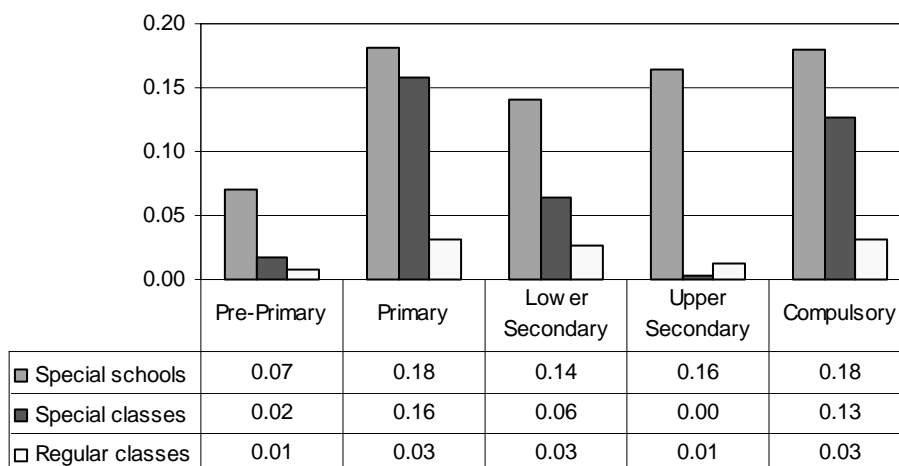


Total - Category 5. Total percentage of students with visual impairment falling within the resources definition

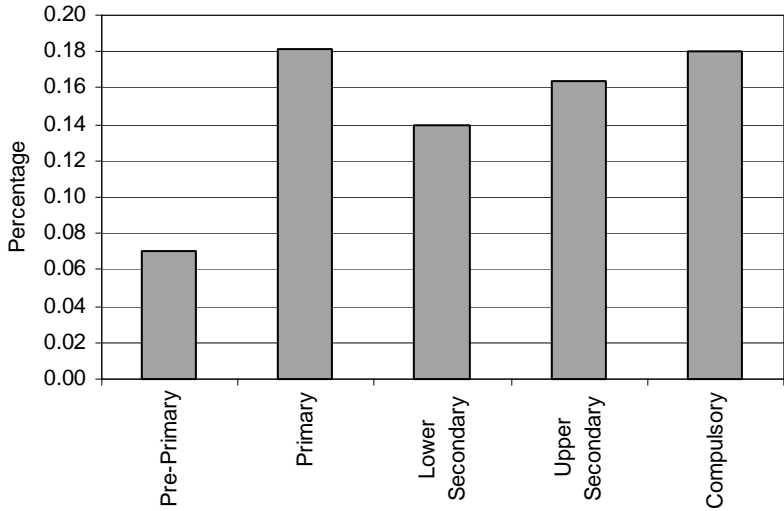


Category 6 Cross-national Category A - Education according to the curriculum for the disabled (physical disabilities, neurological disabilities, developmental disorders).

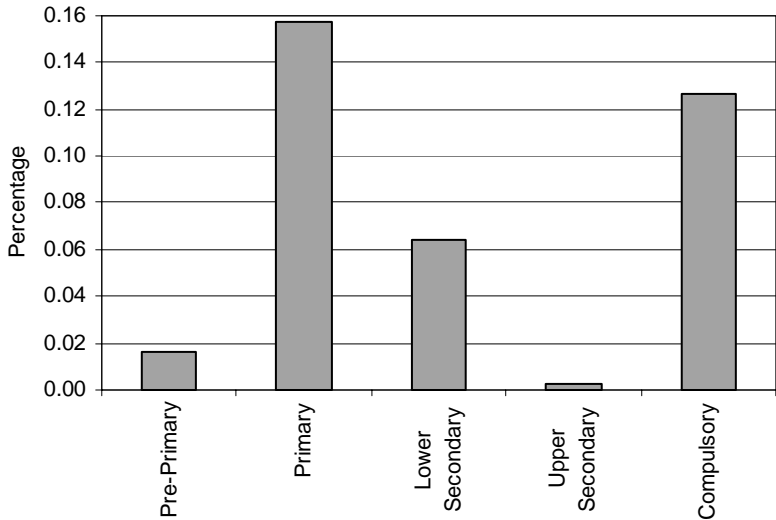
Proportion of students with physical and other impairments by phases of education in special schools, special classes and regular classes



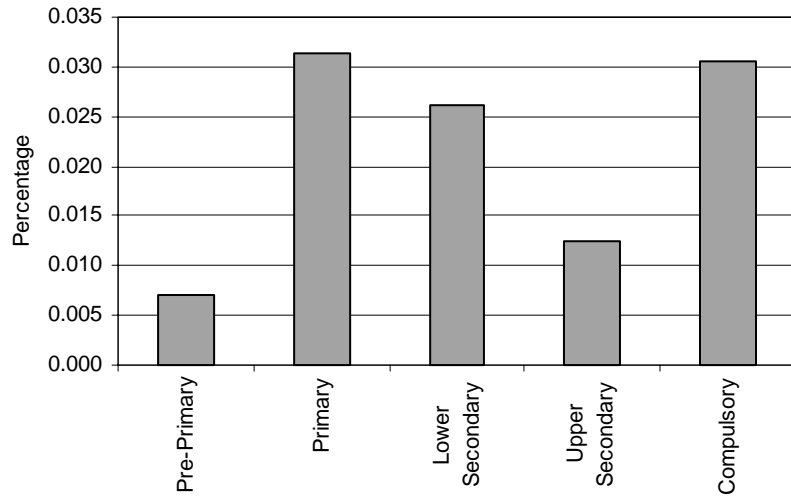
Special Schools - Category 6. Total percentage of students with physical and other impairment falling within the resources definition, by phase of education



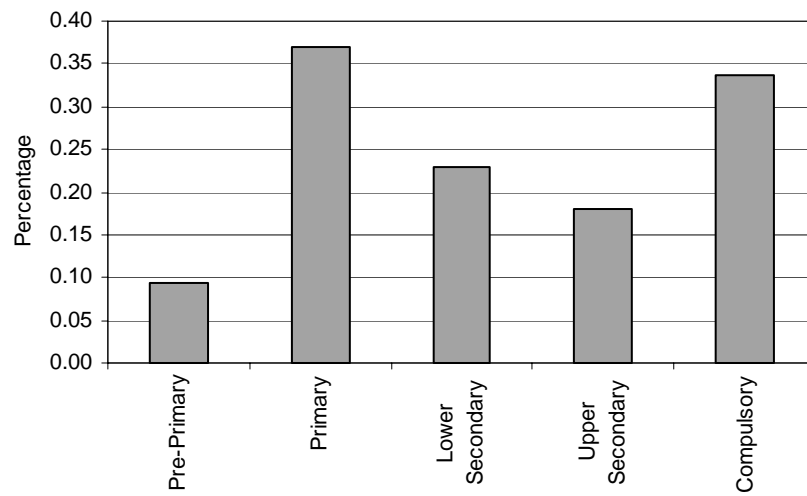
Special Classes - Category 6. Total percentage of students with physical and other impairment falling within the resources definition, by phase of education



Regular Classes - Category 6. Total percentage of students with physical and other impairment falling within the resources definition, by phase of education

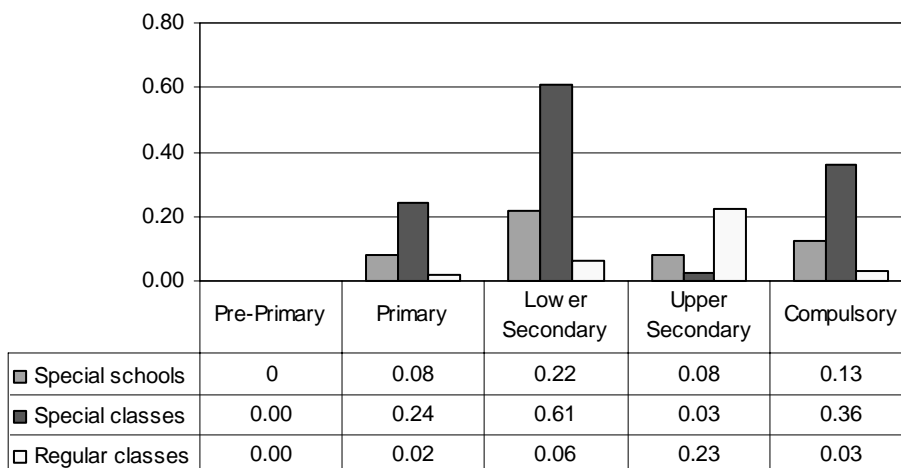


Total - Category 6. Total percentage of students with physical and other impairment falling within the resources definition

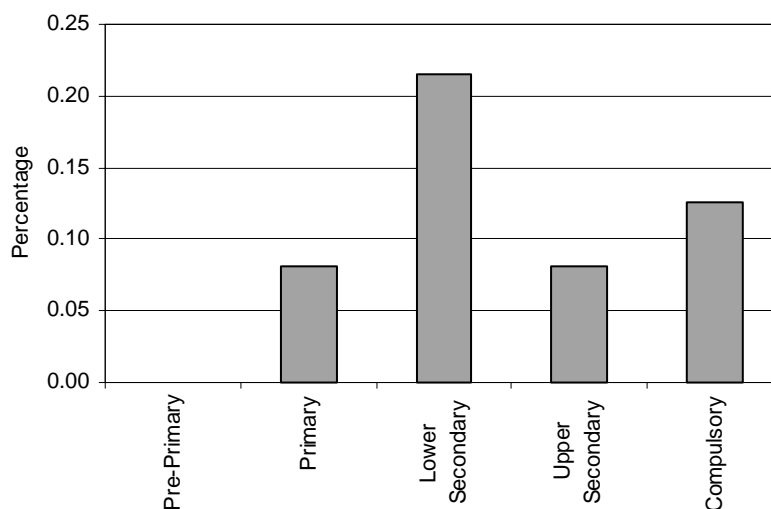


Category 7 Cross-national Category B - Education according to the curriculum for the maladjusted.

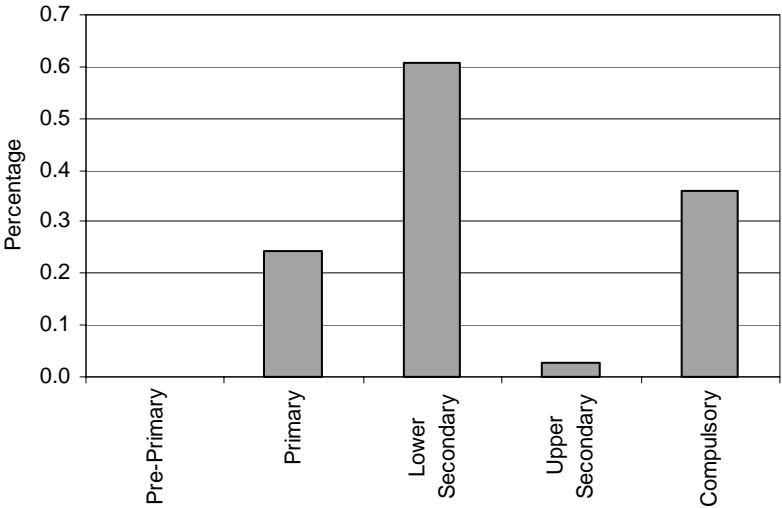
Proportion of students with emotional and social impairment by phases of education in special schools, special classes and regular classes



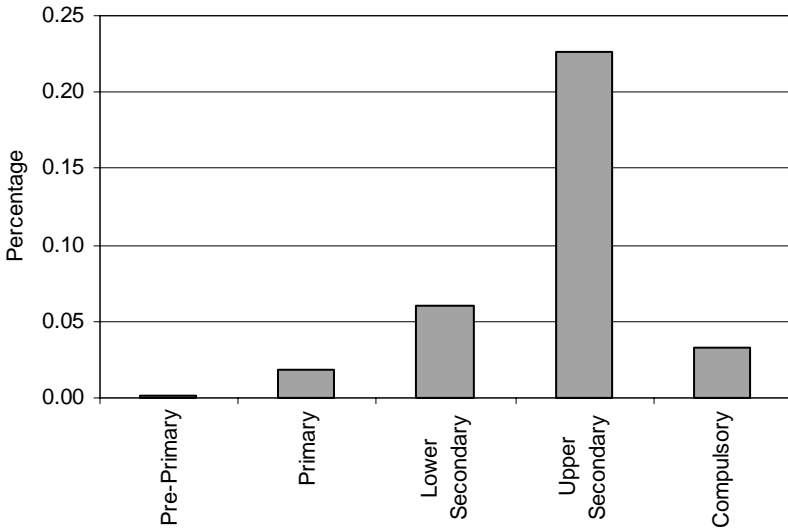
Special Schools - Category 7. Total percentage of students with emotional and social impairment falling within the resources definition, by phase of education



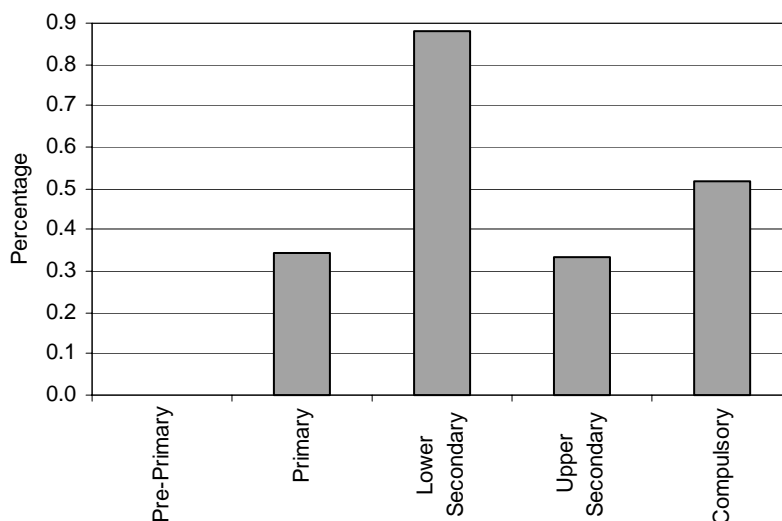
Special Classes - Category 7. Total percentage of students with emotional and social impairment falling within the resources definition, by phase of education



Regular Classes - Category 7. Total percentage of students with emotional and social impairment falling within the resources definition, by phase of education

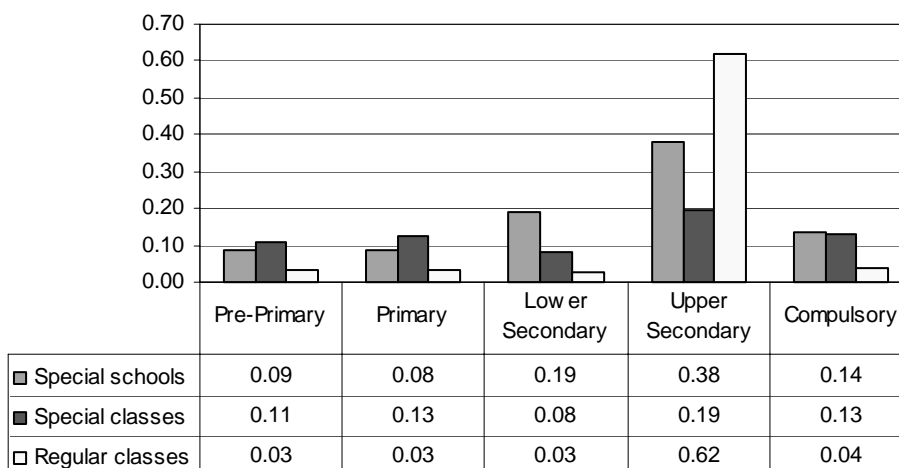


Total - Category 7. Total percentage of students with emotional and social impairment falling within the resources definition

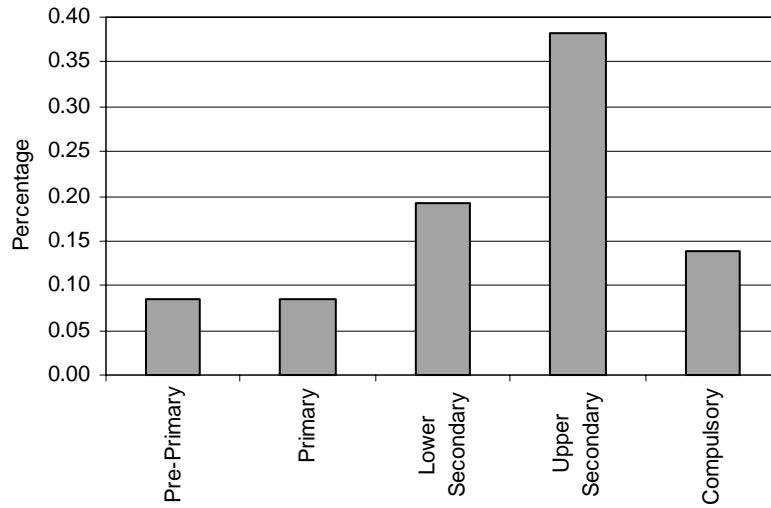


Category 8 Cross-national Category A - Education according to other special needs curricula (e.g., general education curriculum for hospital teaching).

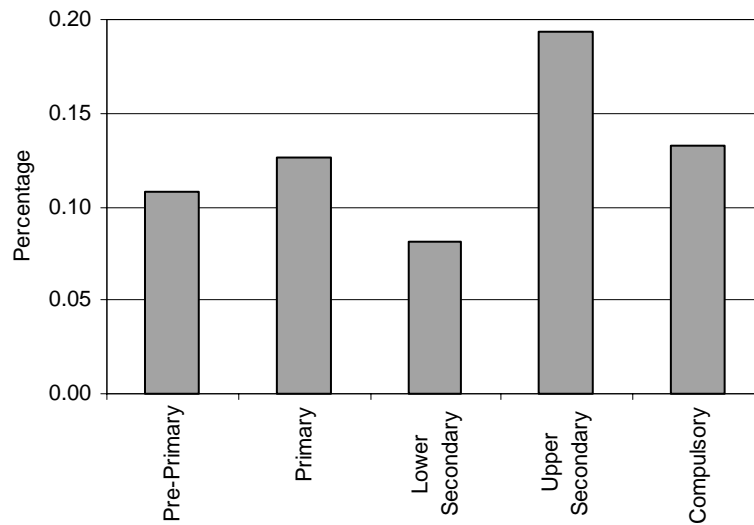
Proportion of students with other impairments by phases of education in special schools, special classes and regular classes



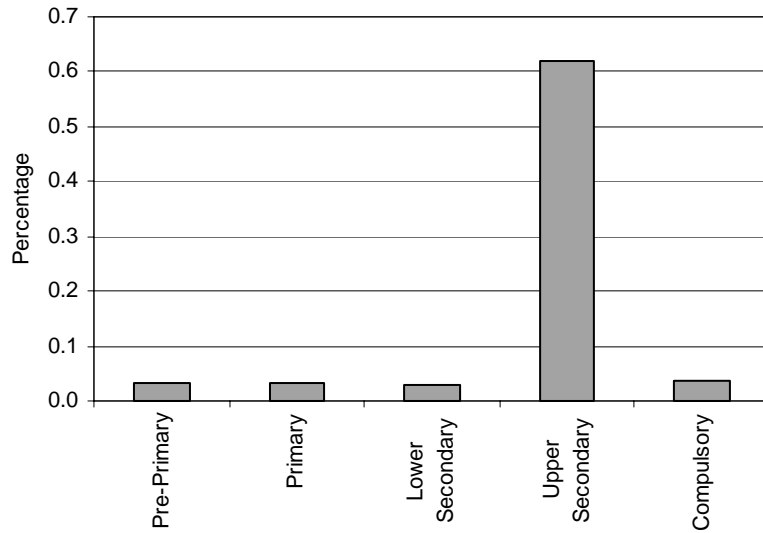
Special Schools - Category 8. Total percentage of students with other impairments falling within the resources definition, by phase of education



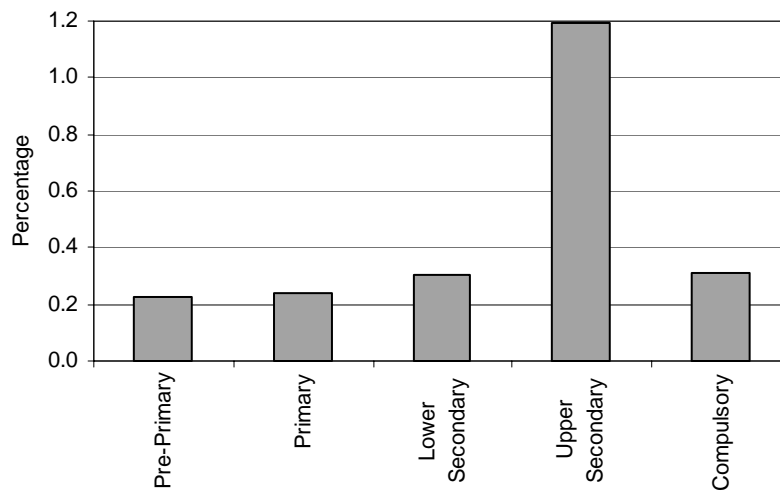
Special Classes - Category 8. Total percentage of students with other impairments falling within the resources definition, by phase of education



Regular Classes - Category 8. Total percentage of students with other impairments falling within the resources definition, by phase of education

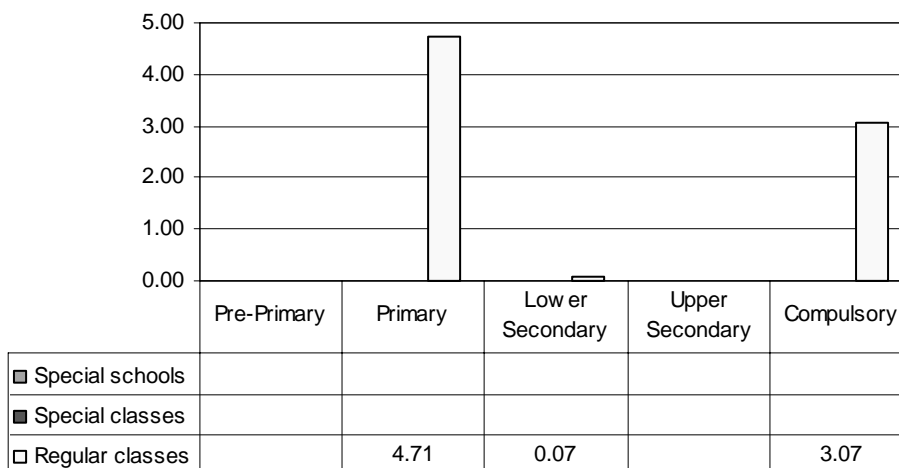


Total - Category 8. Total percentage of students with other impairments falling within the resources definition



Category 9 Cross-national Category B - Part-time special needs education for students with speech difficulties.

Proportion of students with speech difficulties by phases of education in special schools, special classes and regular classes

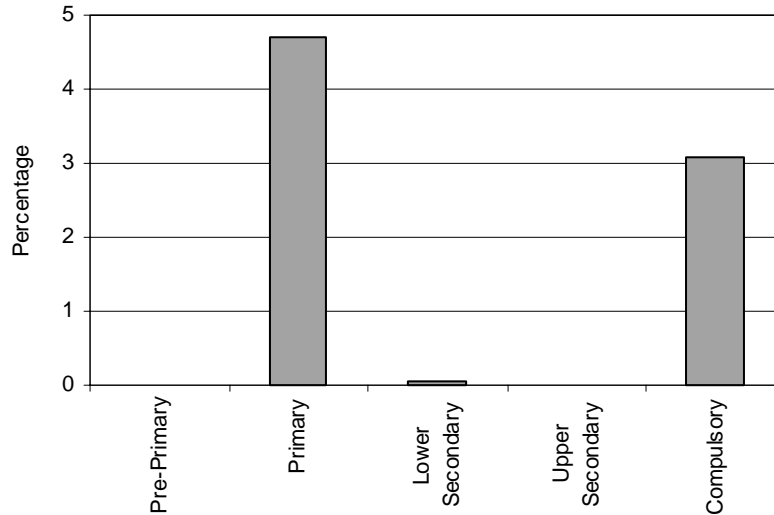


Note: Special schools and special classes data are not applicable.
 Regular classes data in pre-primary education are missing.
 Regular classes data in upper secondary education are not applicable.

Special Schools – Category 9. Speech difficulties
 NOT APPLICABLE

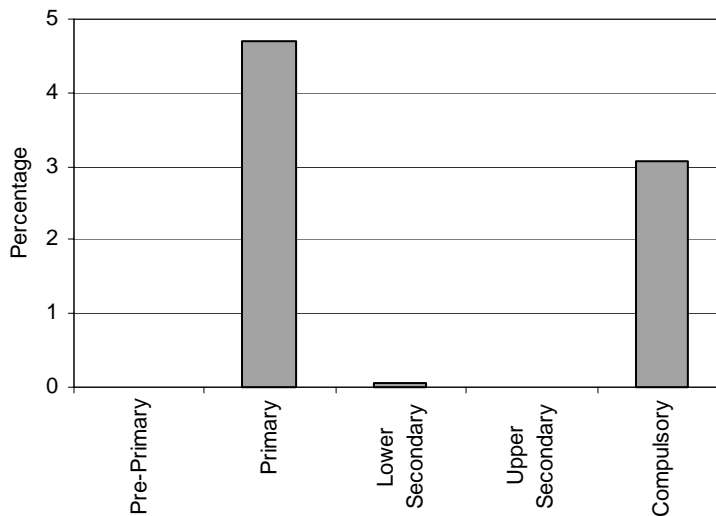
Special Classes – Category 9. Speech difficulties
 NOT APPLICABLE

Regular Classes - Category 9. Total percentage of students with speech difficulties falling within the resources definition, by phase of education



Note: Regular classes data in pre-primary education are missing.
Regular classes data in upper secondary education are not applicable.

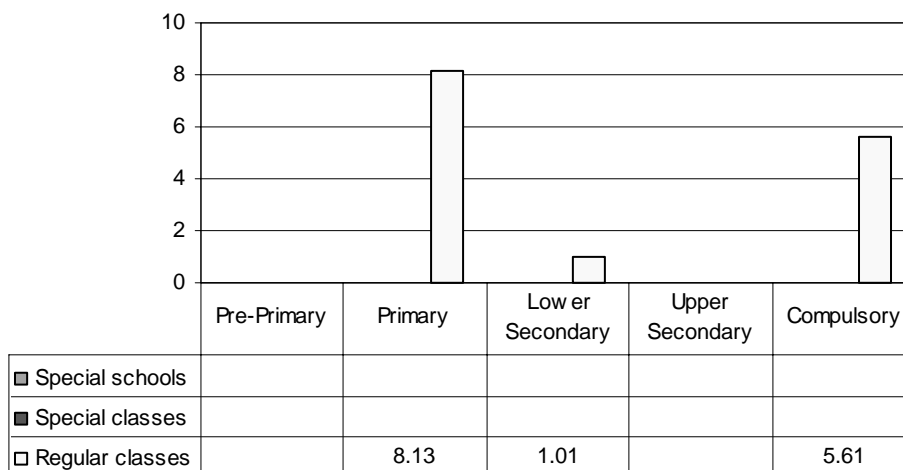
Total - Category 9. Total percentage of students with speech difficulties falling within the resources definition, by phase of education



Note: Special schools and special classes data are not applicable.
Regular classes data in pre-primary education are missing.
Regular classes data in upper secondary education are not applicable.

Category 10 Cross-national Category B - Part-time special needs education for students with reading and writing difficulties.

Proportion of students with reading and writing difficulties by phases of education in special schools, special classes and regular classes

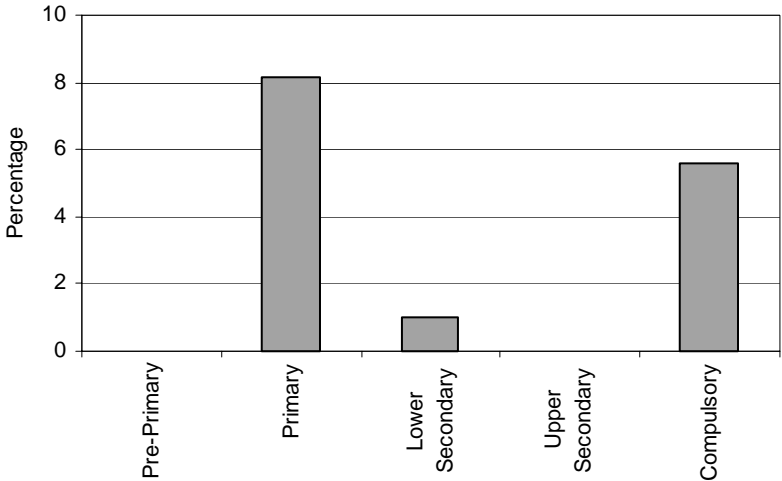


Note: Special schools and special classes data are not applicable.
 Regular classes data in pre-primary education are missing.
 Regular classes data in upper secondary education are not applicable.

Special Schools – Category 10. Reading and writing difficulties
 NOT APPLICABLE

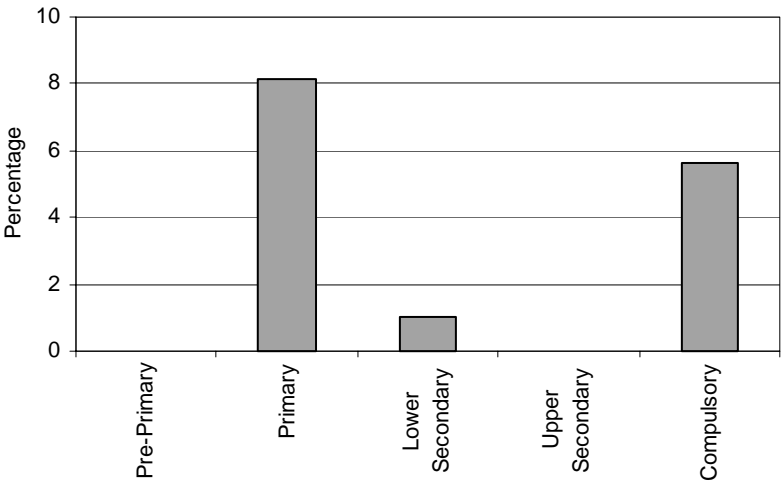
Special Classes – Category 10. Reading and writing difficulties
 NOT APPLICABLE

Regular Classes - Category 10. Total percentage of students with reading and writing difficulties falling within the resources definition, by phase of education



Note: Regular classes data in pre-primary education are missing.
Regular classes data in upper secondary education are not applicable.

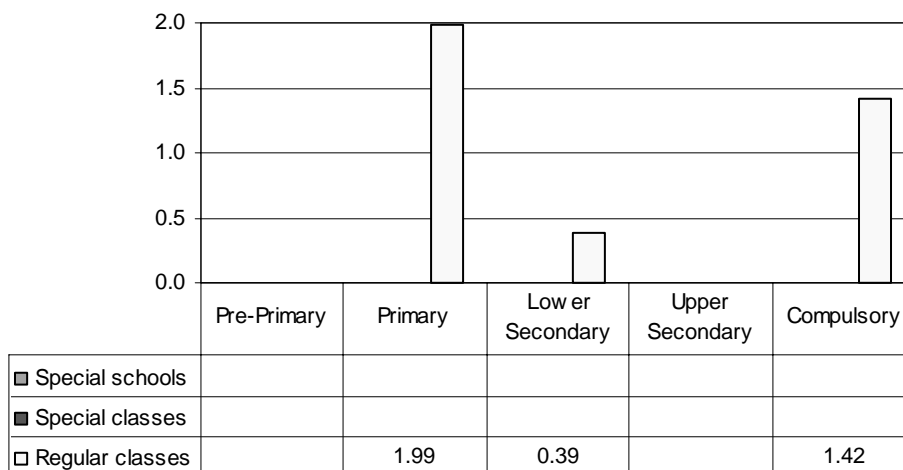
Total - Category 10. Total percentage of students with reading and writing difficulties falling within the resources definition



Note: Special schools and special classes data are not applicable.
Regular classes data in pre-primary education are missing.
Regular classes data in upper secondary education are not applicable.

Category 11 Cross-national Category B - Part-time special needs education aimed at relieving speech, reading and writing difficulties.

Proportion of students with speech, reading and writing difficulties by phases of education in special schools, special classes and regular classes

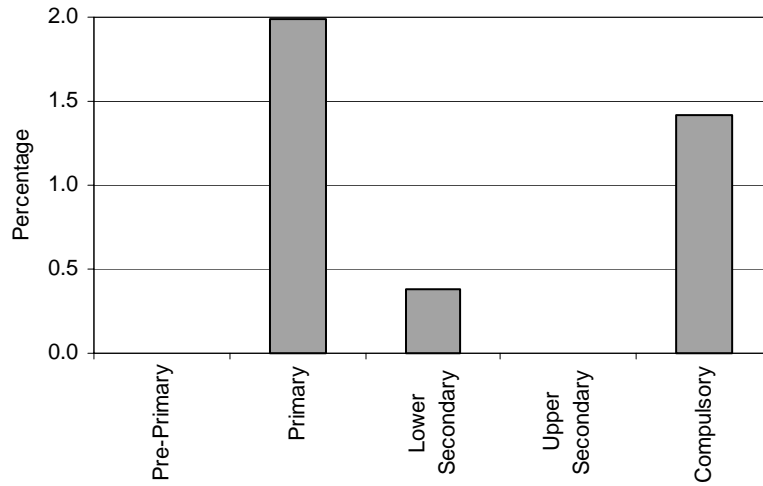


Note: Special schools and special classes data are not applicable.
 Regular classes data in pre-primary education are missing.
 Regular classes data in upper secondary education are not applicable.

Special Schools – Category 11. Speech, reading and writing difficulties
 NOT APPLICABLE

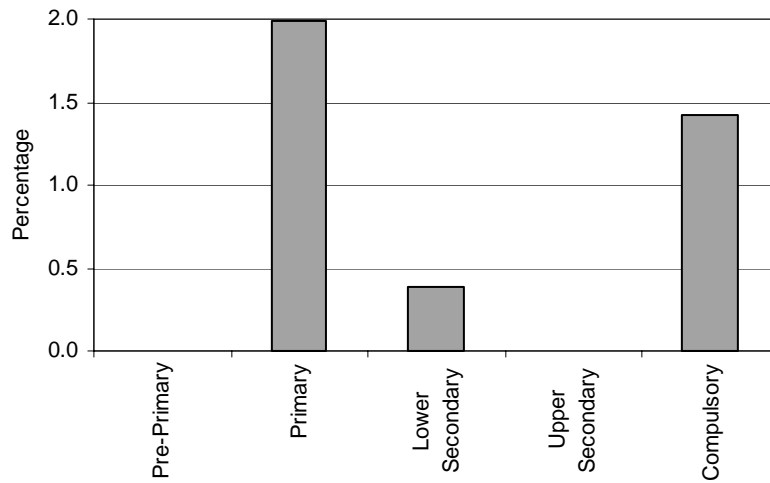
Special Classes – Category 11. Speech, reading and writing difficulties
 NOT APPLICABLE

Regular Classes - Category 11. Total percentage of students with speech, reading and writing difficulties falling within the resources definition, by phase of education



Note: Regular classes data in pre-primary education are missing.
Regular classes data in upper secondary education are not applicable.

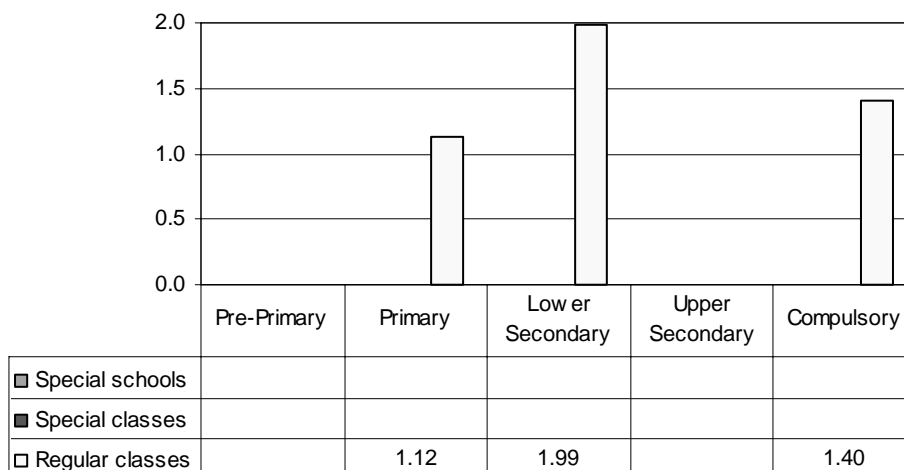
Total - Category 11. Total percentage of students with speech, reading and writing difficulties falling within the resources definition



Note: Special schools and special classes data are not applicable.
Regular classes data in pre-primary education are missing.
Regular classes data in upper secondary education are not applicable.

Category 12 Cross-national Category B - Part-time special needs education aiming at relieving learning difficulties in mathematics.

Proportion of students with learning difficulties in mathematics by phases of education in special schools, special classes and regular classes

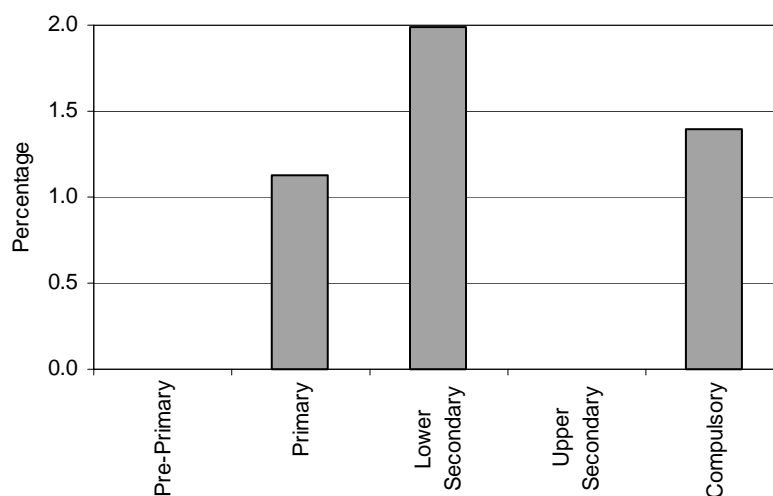


Note: Special schools and special classes data are not applicable.
 Regular classes data in pre-primary education are missing.
 Regular classes data in upper secondary education are not applicable.

Special Schools – Category 12. Learning difficulties in mathematics
 NOT APPLICABLE

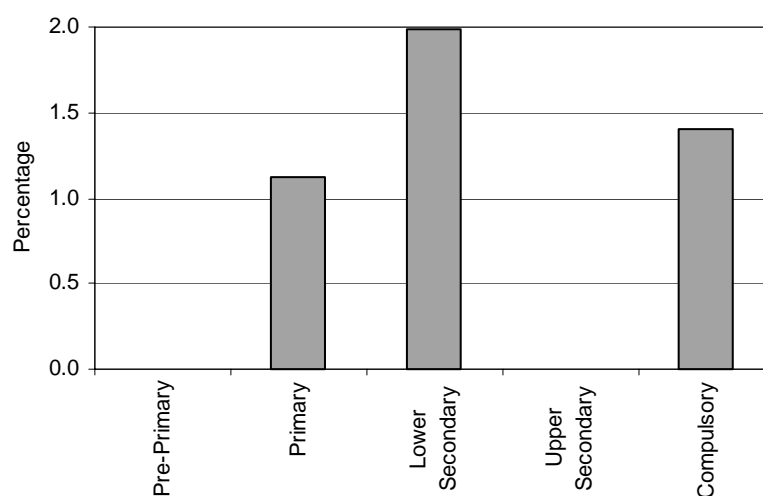
Special Classes – Category 12. Learning difficulties in mathematics
 NOT APPLICABLE

Regular Classes - Category 12. Total percentage of students with learning difficulties in mathematics falling within the resources definition, by phase of education



Note: Regular classes data in pre-primary education are missing.
Regular classes data in upper secondary education are not applicable.

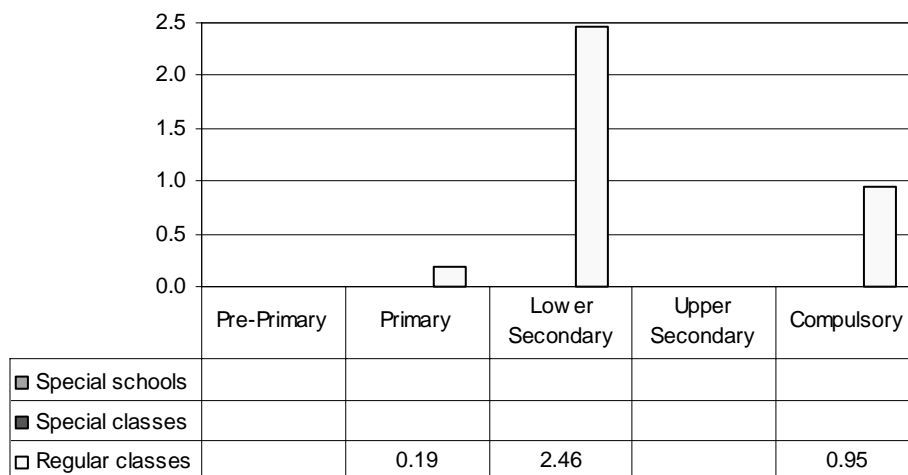
Total - Category 12. Total percentage of students with learning difficulties in mathematics falling within the resources definition



Note: Special schools and special classes data are not applicable.
Regular classes data in pre-primary education are missing.
Regular classes data in upper secondary education are not applicable.

Category 13 Cross-national Category B - Part-time special needs education aiming at relieving learning difficulties in foreign languages.

Proportion of students with learning difficulties in foreign languages by phases of education in special schools, special classes and regular classes

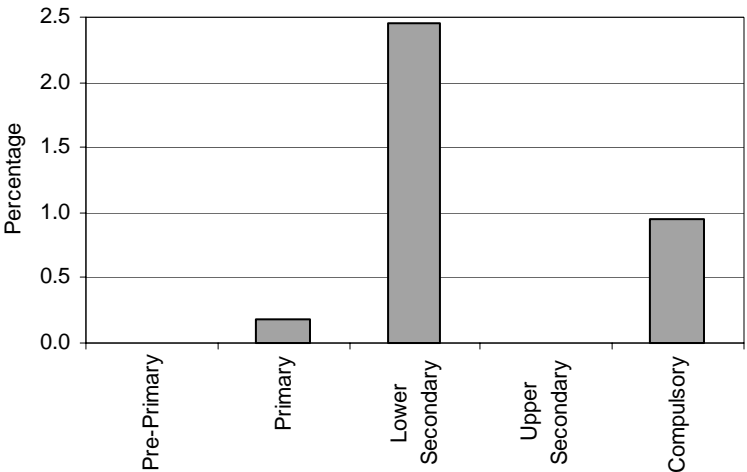


Note: Special schools and special classes data are not applicable.
 Regular classes data in pre-primary education are missing.
 Regular classes data in upper secondary education are not applicable.

Special Schools – Category 13. Learning difficulties in foreign languages
 NOT APPLICABLE

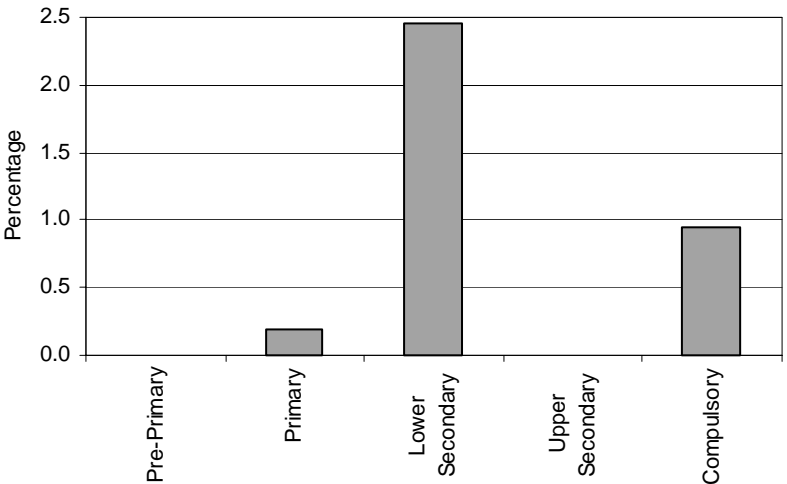
Special Classes – Category 13. Learning difficulties in foreign languages
 NOT APPLICABLE

Regular Classes - Category 13. Total percentage of students with learning difficulties in foreign languages falling within the resources definition, by phase of education



Note: Regular classes data in pre-primary education are missing.
Regular classes data in upper secondary education are not applicable.

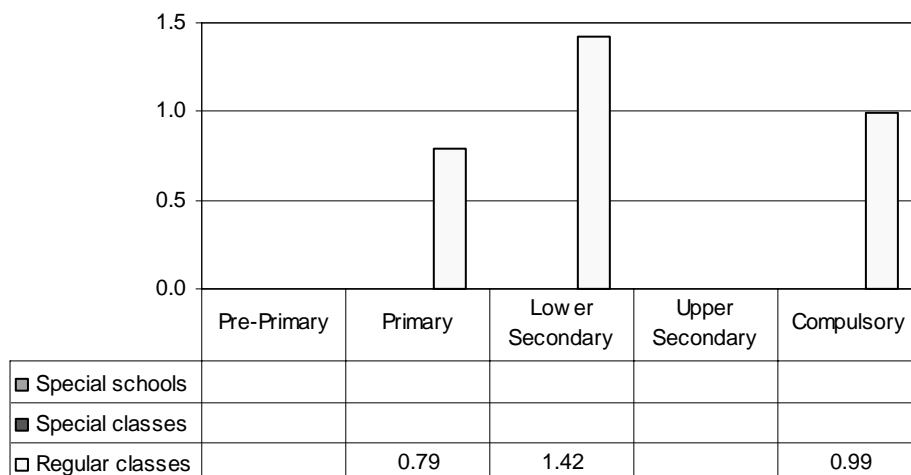
Total - Category 13. Total percentage of students with learning difficulties in foreign languages falling within the resources definition



Note: Special schools and special classes data are not applicable.
Regular classes data in pre-primary education are missing.
Regular classes data in upper secondary education are not applicable.

Category 14 Cross-national Category B - Part-time special needs education aiming at relieving general learning difficulties.

Proportion of students with general learning difficulties by phases of education in special schools, special classes and regular classes

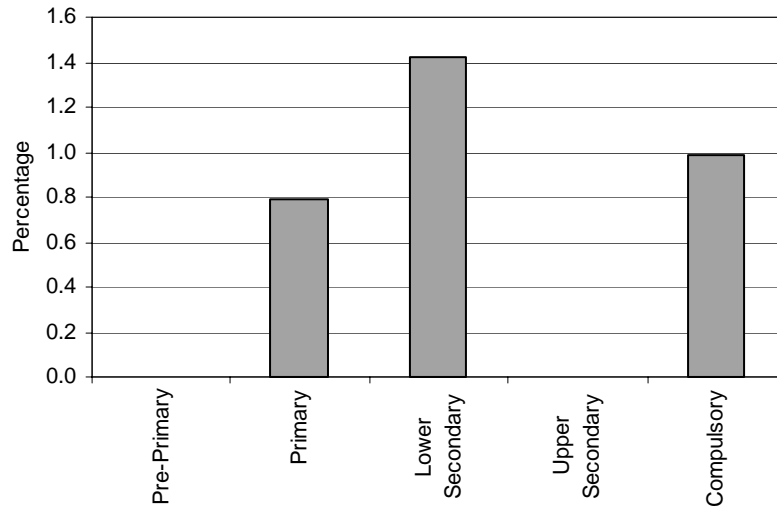


Note: Special schools and special classes data are not applicable.
 Regular classes data in pre-primary education are missing.
 Regular classes data in upper secondary education are not applicable.

Special Schools – Category 14. General learning difficulties
 NOT APPLICABLE

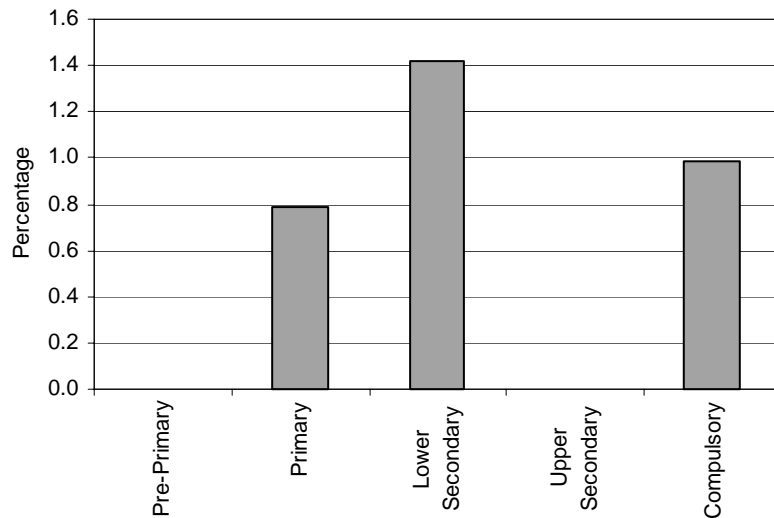
Special Classes – Category 14. General learning difficulties
 NOT APPLICABLE

Regular Classes - Category 14. Total percentage of students with general learning difficulties falling within the resources definition, by phase of education



Note: Regular classes data in pre-primary education are missing.
Regular classes data in upper secondary education are not applicable.

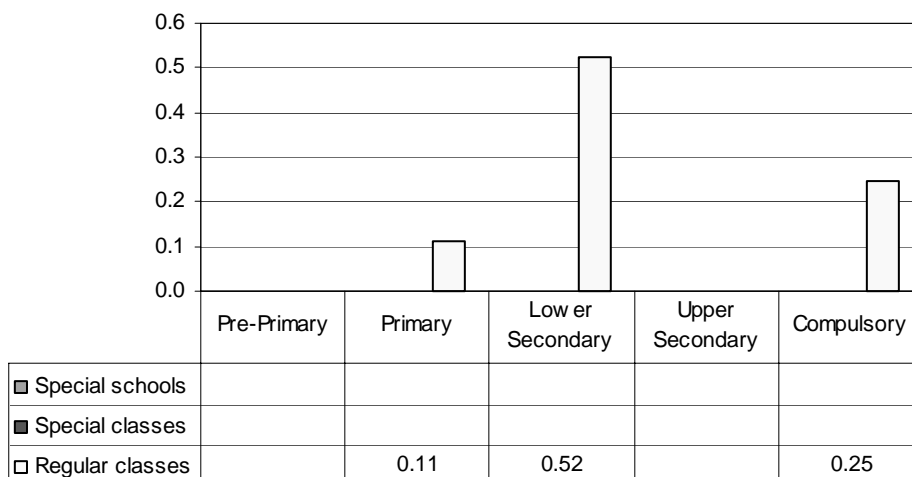
Total - Category 14. Total percentage of students with general learning difficulties falling within the resources definition



Note: Special schools and special classes data are not applicable.
Regular classes data in pre-primary education are missing.
Regular classes data in upper secondary education are not applicable.

Category 15 Cross-national Category B - Part-time special needs education for the maladjusted.

Proportion of students with emotional and social difficulties by phases of education in special schools, special classes and regular classes

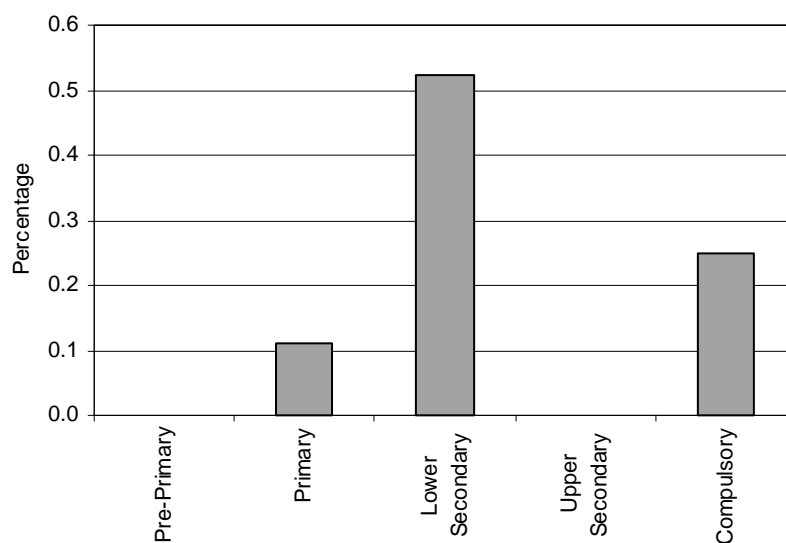


Note: Special schools and special classes data are not applicable.
 Regular classes data in pre-primary education are missing.
 Regular classes data in upper secondary education are not applicable.

Special Schools – Category 15. Emotional and social difficulties
 NOT APPLICABLE

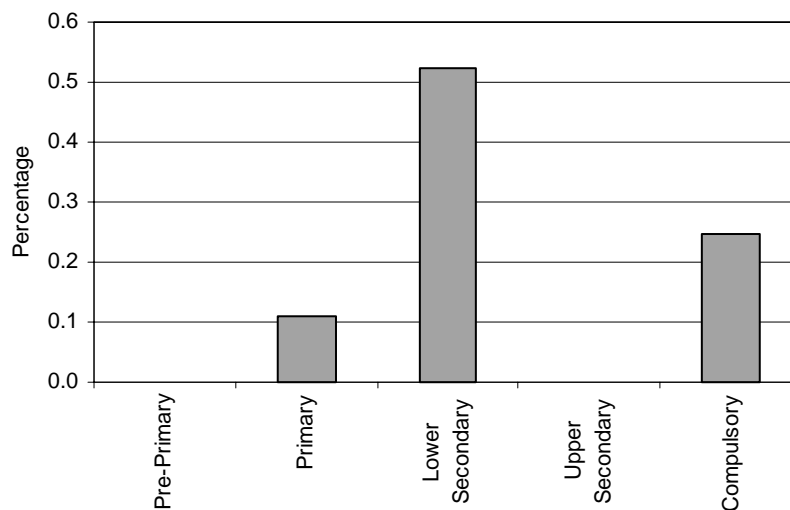
Special Classes – Category 15. Emotional and social difficulties
 NOT APPLICABLE

Regular Classes - Category 15. Total percentage of students with emotional and social difficulties falling within the resources definition, by phase of education



Note: Regular classes data in pre-primary education are missing.
Regular classes data in upper secondary education are not applicable.

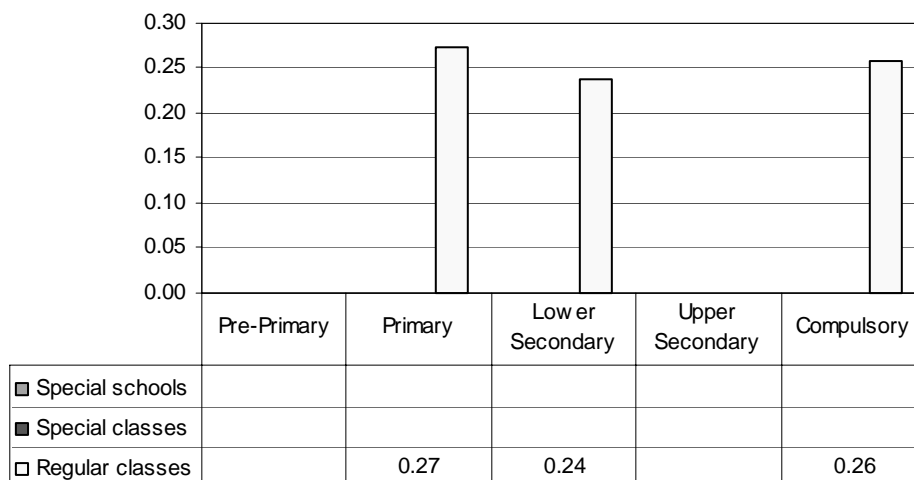
Total - Category 15. Total percentage of students with emotional and social difficulties falling within the resources definition



Note: Special schools and special classes data are not applicable.
Regular classes data in pre-primary education are missing.
Regular classes data in upper secondary education are not applicable.

Category 16 Cross-national Category B - Part-time special needs education for other difficulties.

Proportion of students with other special difficulties by phases of education in special schools, special classes and regular classes

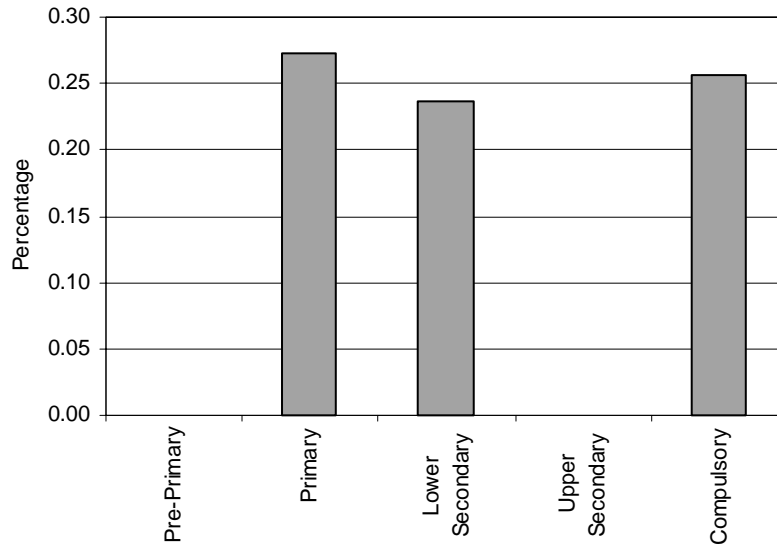


Note: Special schools and special classes data are not applicable.
 Regular classes data in pre-primary education are missing.
 Regular classes data in upper secondary education are not applicable.

Special Schools – Category 16. Other special difficulties
 NOT APPLICABLE

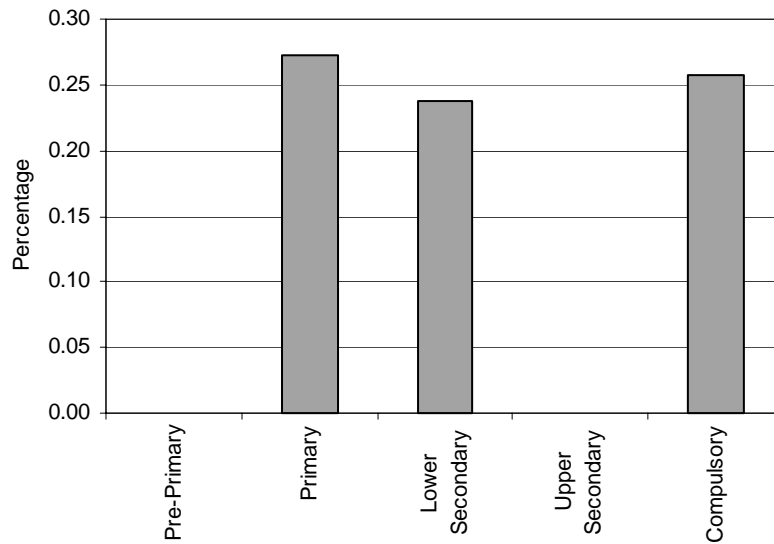
Special Classes – Category 16. Other special difficulties
 NOT APPLICABLE

Regular Classes - Category 16. Total percentage of students with other special difficulties falling within the resources definition, by phase of education



Note: Regular classes data in pre-primary education are missing.
Regular classes data in upper secondary education are not applicable.

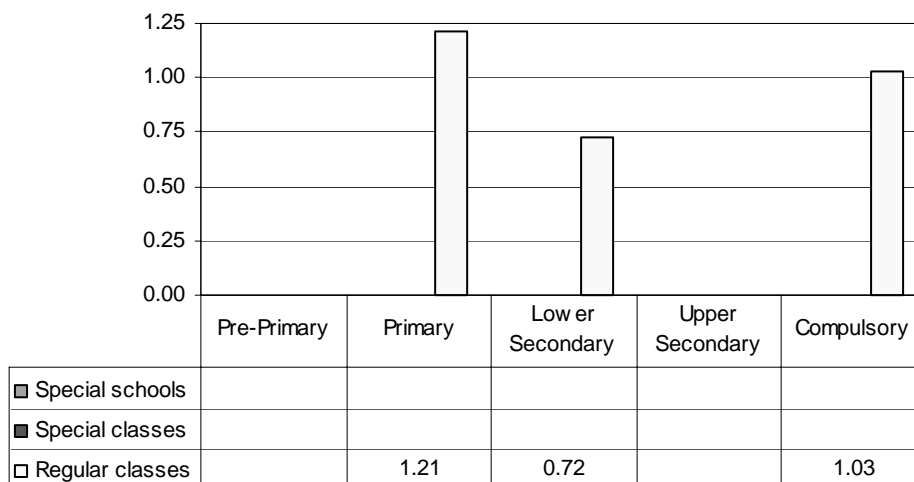
Total - Category 16. Total percentage of students with emotional and social difficulties falling within the resources definition



Note: Special schools and special classes data are not applicable.
Regular classes data in pre-primary education are missing.
Regular classes data in upper secondary education are not applicable.

Category 17 Cross-national Category C - Periodical remedial teaching for students who have moved to Finland from abroad; mother tongue teaching for Sami, Romany and foreign-language speakers; and teaching for Finnish students who have moved back to Finland from abroad in order to maintain the language skills they have acquired abroad (part-time teaching).

Proportion of immigrant students receiving remedial teaching by phases of education in special schools, special classes and regular classes

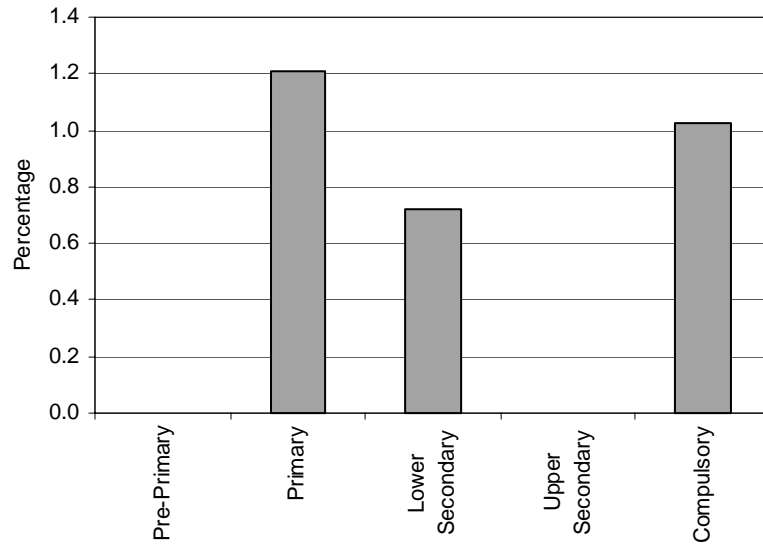


Note: Special schools and special classes data are not applicable.
 Regular classes data in pre-primary education are missing.
 Regular classes data in upper secondary education are not applicable.

Special Schools – Category 17. Remedial teaching for immigrants
 NOT APPLICABLE

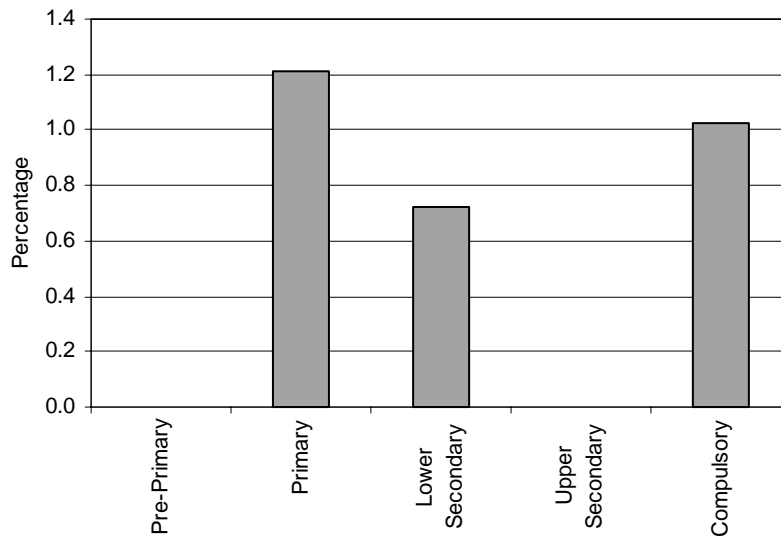
Special Classes – Category 17. Remedial teaching for immigrants
 NOT APPLICABLE

Regular Classes - Category 17. Total percentage of immigrant students receiving remedial teaching falling within the resources definition, by phase of education



Note: Regular classes data in pre-primary education are missing.
Regular classes data in upper secondary education are not applicable.

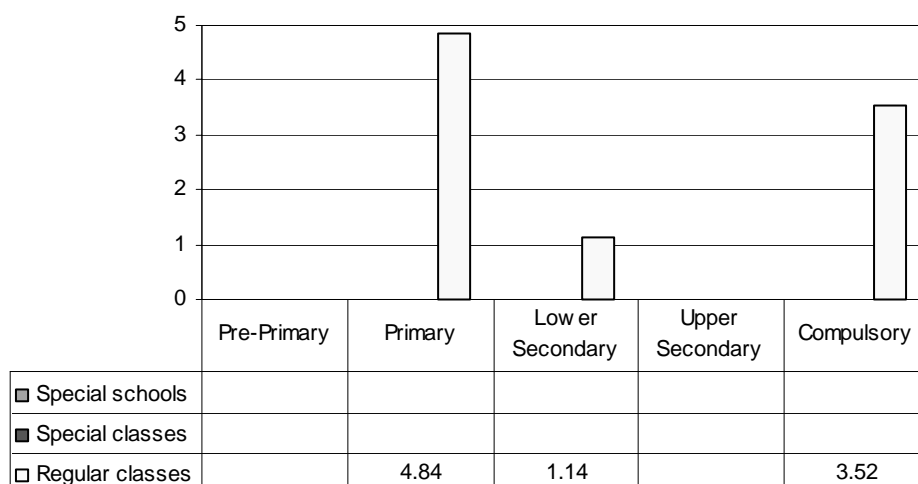
Total - Category 17. Total percentage of immigrant students receiving remedial teaching falling within the resources definition



Note: Special schools and special classes data are not applicable.
Regular classes data in pre-primary education are missing.
Regular classes data in upper secondary education are not applicable.

Category 18 Cross-national Category B - Temporary teaching usually provided by a general education teacher for students who have temporarily fallen behind in their studies or who need other special support (part-time teaching).

Proportion of students receiving remedial teaching by phases of education in special schools, special classes and regular classes

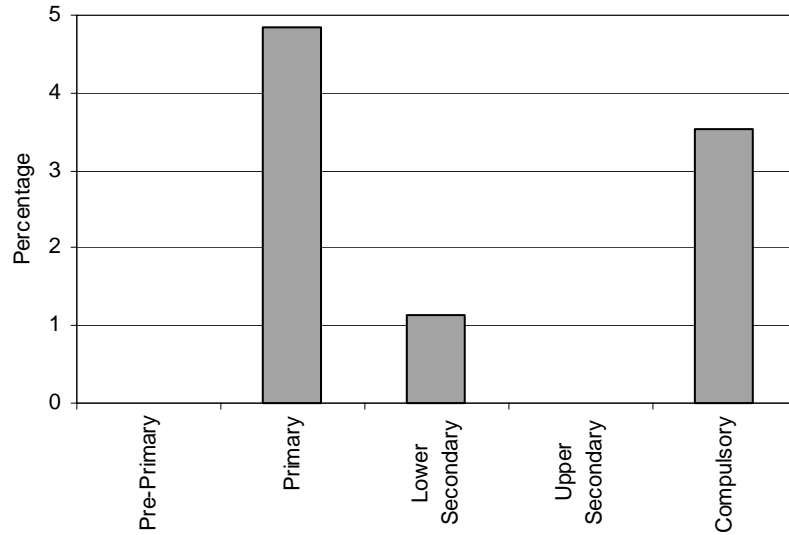


Note: Special schools and special classes data are not applicable.
 Regular classes data in pre-primary education are missing.
 Regular classes data in upper secondary education are not applicable.

Special Schools – Category 18. Remedial teaching
 NOT APPLICABLE

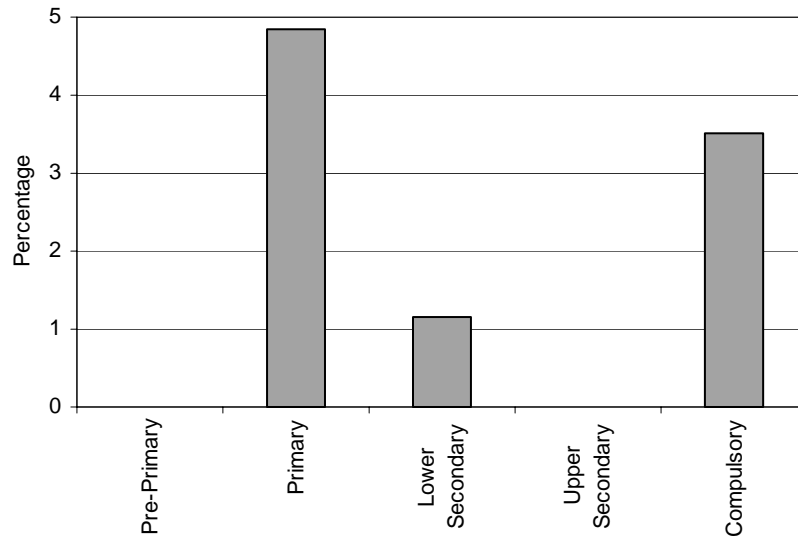
Special Classes – Category 18. Remedial teaching
 NOT APPLICABLE

Regular Classes - Category 18. Total percentage of students receiving remedial teaching falling within the resources definition, by phase of education



Note: Regular classes data in pre-primary education are missing.
Regular classes data in upper secondary education are not applicable.

Total - Category 18. Total percentage of students receiving remedial teaching falling within the resources definition



Note: Special schools and special classes data are not applicable.
Regular classes data in pre-primary education are missing.
Regular classes data in upper secondary education are not applicable.