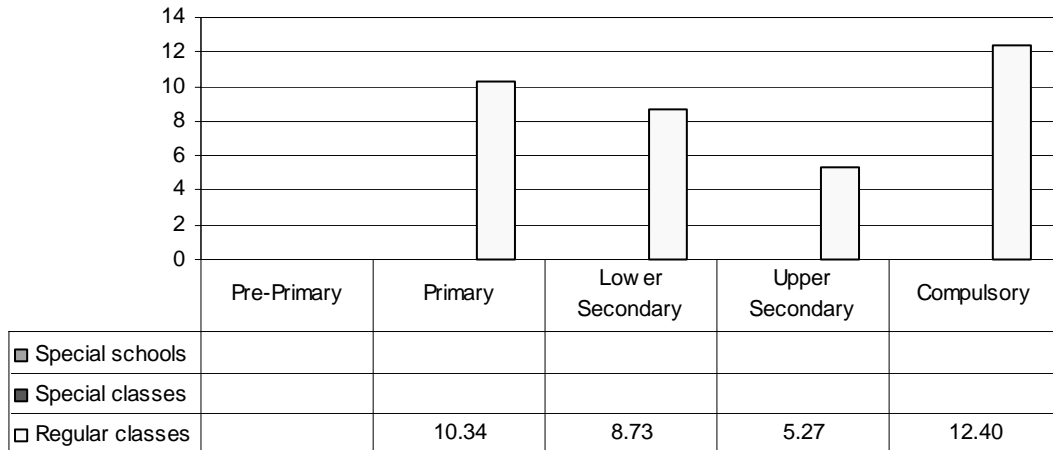


CANADA (NB)

Category 1 Cross-national Category B - Students with severe behavioural challenges that are primarily a result of social, psychological and environmental factors.

Proportion of students with behavioural exceptionalities by phases of education in special schools, special classes and regular classes

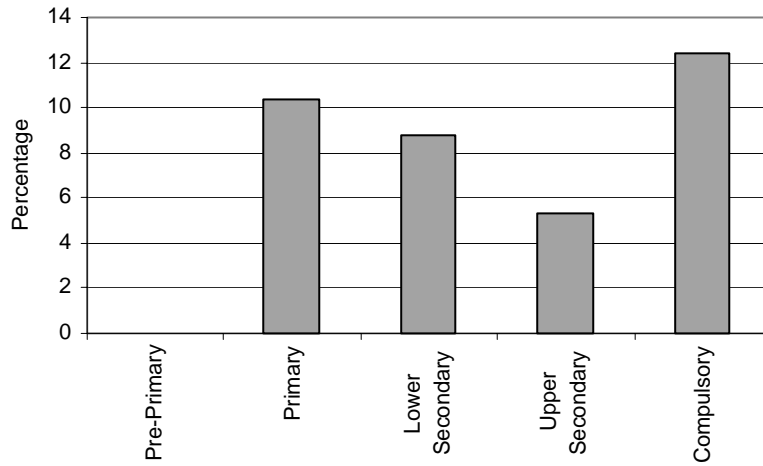


Note: Special schools data are not applicable.
 Special classes data are not applicable.
 Regular classes data in pre-primary education are not applicable.

Special Schools – Category 1. Behavioural exceptionalities
 NOT APPLICABLE

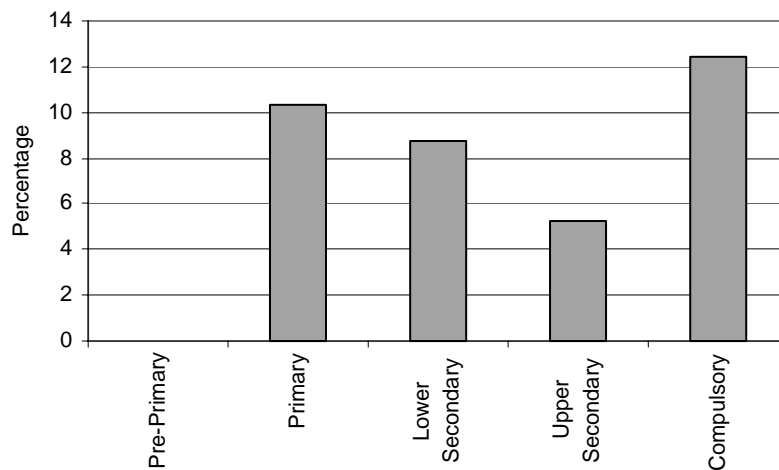
Special Classes – Category 1. Behavioural exceptionalities
 NOT APPLICABLE

Regular Classes - Category 1. Total percentage of students with behavioural exceptionalities falling within the resources definition, by phase of education



Note: Regular classes data in pre-primary education are not applicable.

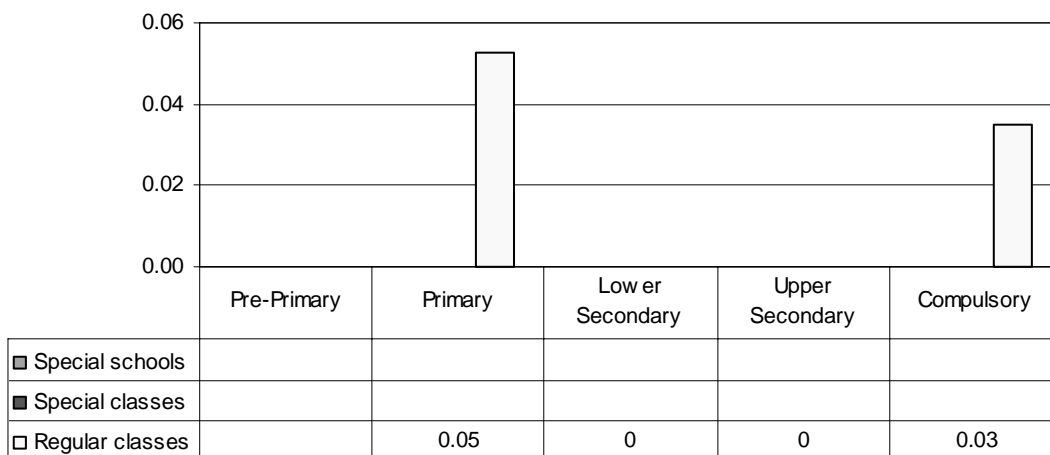
Total - Category 1. Total percentage of students with behavioural exceptionalities falling within the resources definition



Note: Special schools data are not applicable.
 Special classes data are not applicable.
 Regular classes data in pre-primary education are not applicable.

Category 2 Cross-national Category A - Students who require support because of deficits in speech/articulation development and language.

Proportion of students with communicational disabilities by phases of education in special schools, special classes and regular classes

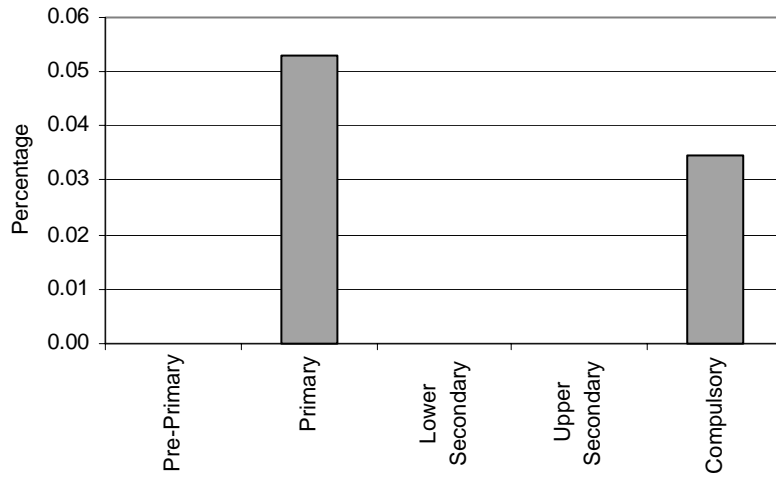


Note: Special schools data are not applicable.
 Special classes data are not applicable.
 Regular classes data in pre-primary education are not applicable.

**Special Schools – Category 2.
 Communicational**
 NOT APPLICABLE

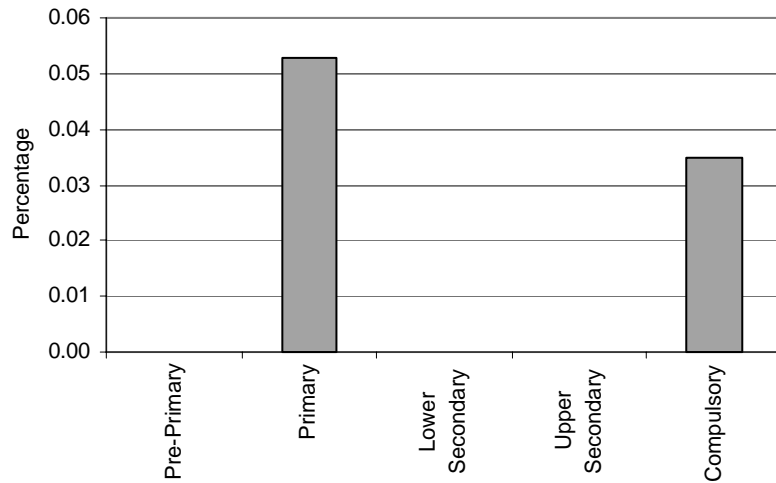
**Special Classes – Category 2.
 Communicational**
 NOT APPLICABLE

Regular Classes - Category 2. Total percentage of students with communicational disabilities falling within the resources definition, by phase of education



Note: Regular classes data in pre-primary education are not applicable.

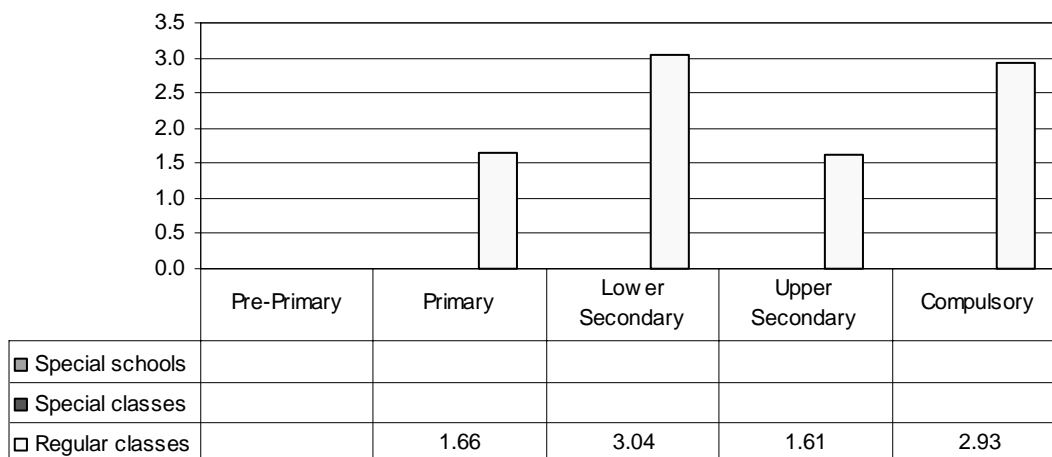
Total - Category 2. Total percentage of students with communicational disabilities falling within the resources definition



Note: Special schools data are not applicable.
 Special classes data are not applicable.
 Regular classes data in pre-primary education are not applicable.

Category 3 Cross-national Category A - Students who may require modified or long term intensive special educational programmes or services to develop their academic and social potential.

Proportion of students with severe mental disability by phases of education in special schools, special classes and regular classes

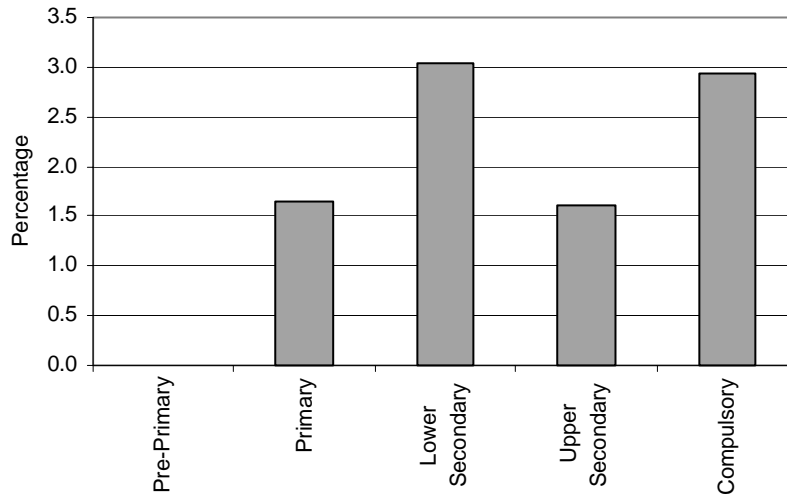


Note: Special schools data are not applicable.
 Special classes data are not applicable.
 Regular classes data in pre-primary education are not applicable.

Special Schools – Category 3. Intellectual
 NOT APPLICABLE

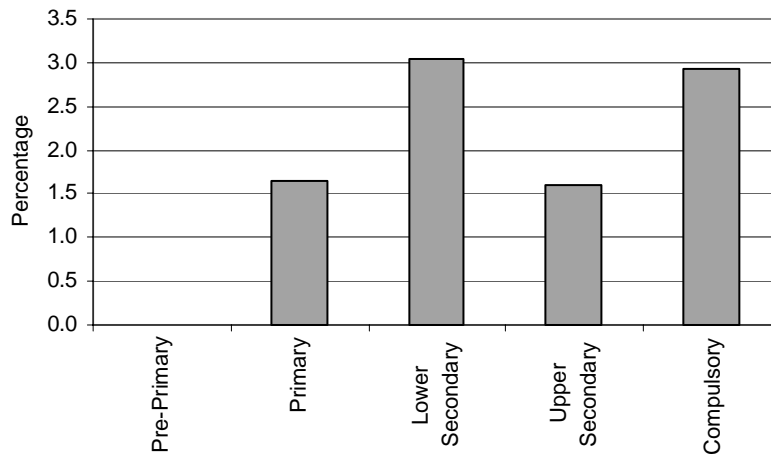
Special Classes – Category 3. Intellectual
 NOT APPLICABLE

Regular Classes - Category 3. Total percentage of students with intellectual disabilities falling within the resources definition, by phase of education



Note: Regular classes data in pre-primary education are not applicable.

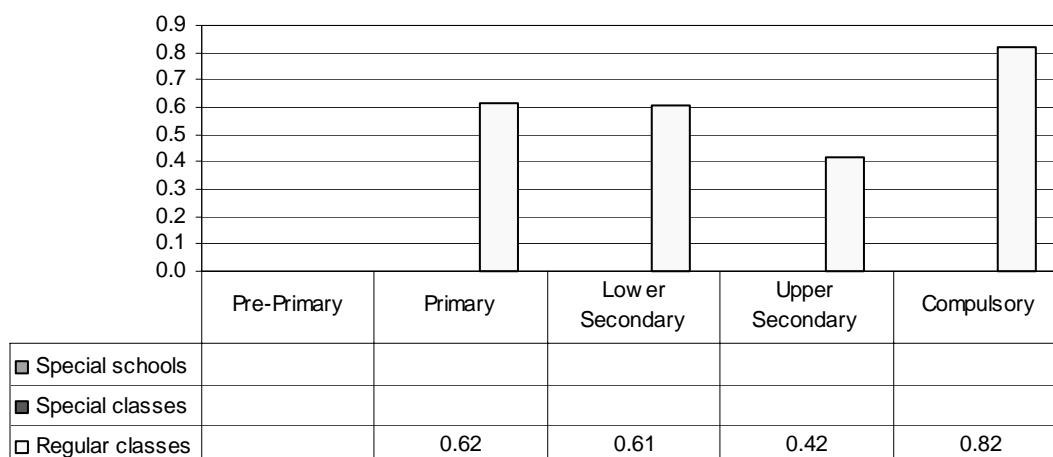
Total - Category 3. Total percentage of students with intellectual disabilities falling within the resources definition



Note: Special schools data are not applicable.
 Special classes data are not applicable.
 Regular classes data in pre-primary education are not applicable.

Category 4 Cross-national Category A - Medical/Health; Physically Handicapped (students who because of physically challenging conditions require mobility assistance or adaptation of physical environment personal care); Hearing Impaired (services received from APSEA); Visually Impaired (services received from APSEA).

Proportion of students with physical disabilities by phases of education in special schools, special classes and regular classes

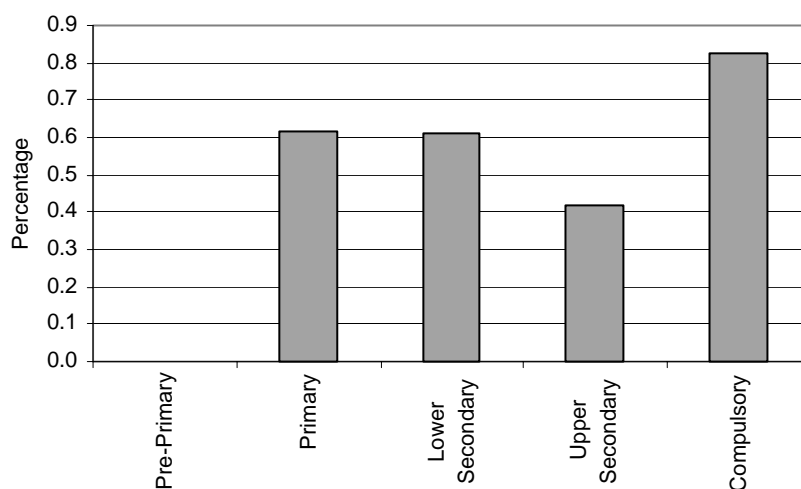


Note: Special schools data are not applicable.
 Special classes data are not applicable.
 Regular classes data in pre-primary education are not applicable.

Special Schools – Category 4. Physical
 NOT APPLICABLE

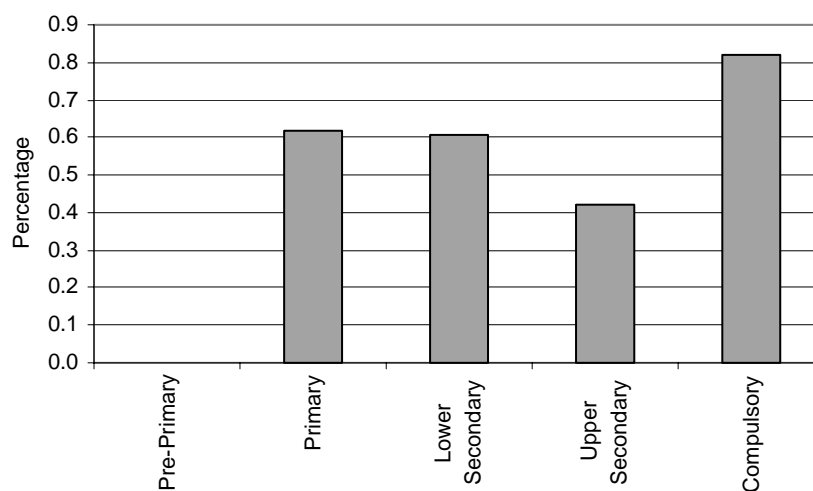
Special Classes – Category 4. Physical
 NOT APPLICABLE

Regular Classes - Category 4. Total percentage of students with physical disabilities falling within the resources definition, by phase of education



Note: Regular classes data in pre-primary education are not applicable.

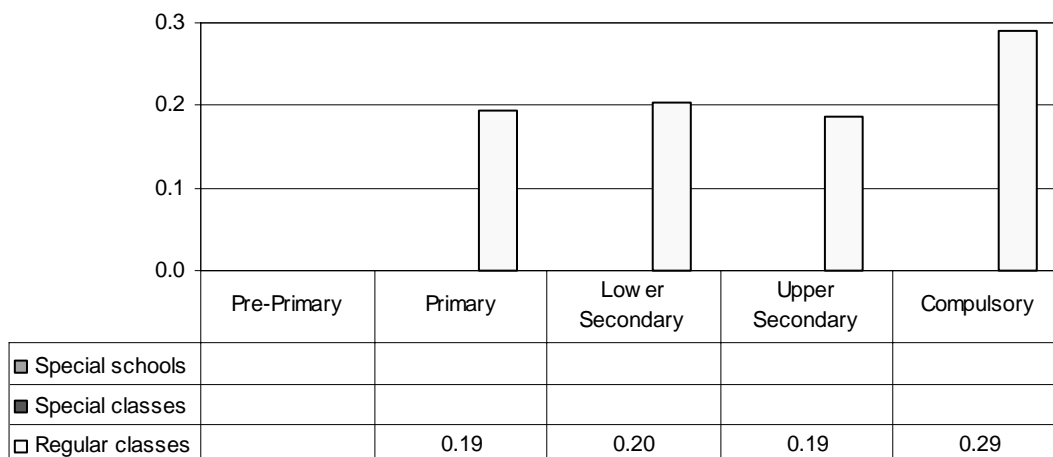
Total - Category 4. Total percentage of students with physical disabilities falling within the resources definition



Note: Special schools data are not applicable.
 Special classes data are not applicable.
 Regular classes data in pre-primary education are not applicable.

Category 5 Cross-national Category A - Students who because of specific learning disabilities continue to experience a wide range of difficulties in coping in the regular classroom environment.

Proportion of students with perceptual disabilities by phases of education in special schools, special classes and regular classes

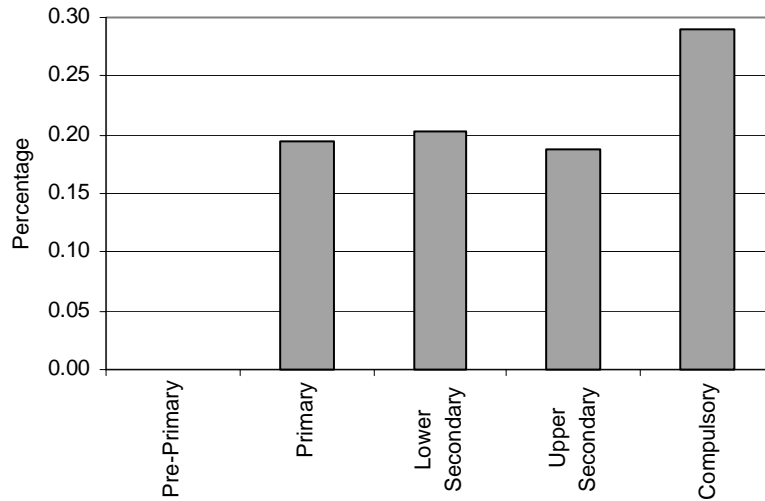


Note: Special schools data are not applicable.
 Special classes data are not applicable.
 Regular classes data in pre-primary education are not applicable.

Special Schools – Category 5. Perceptual
 NOT APPLICABLE

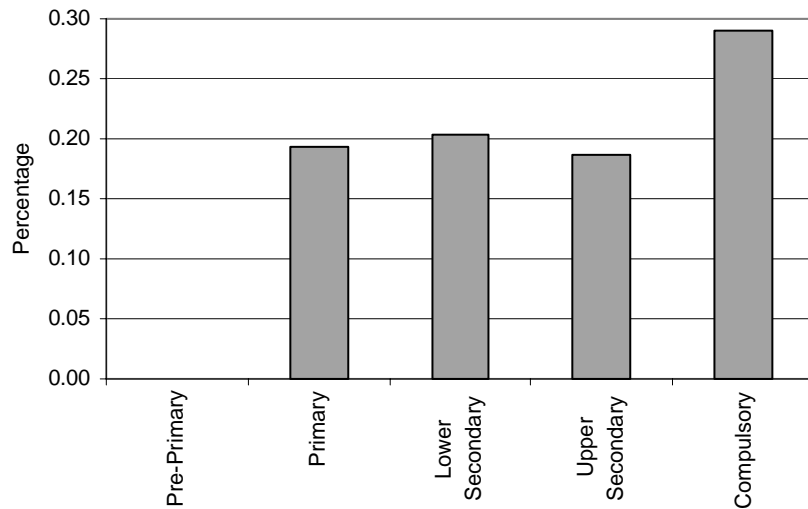
Special Classes – Category 5. Perceptual
 NOT APPLICABLE

Regular Classes - Category 5. Total percentage of students with perceptual disabilities falling within the resources definition, by phase of education



Note: Regular classes data in pre-primary education are not applicable.

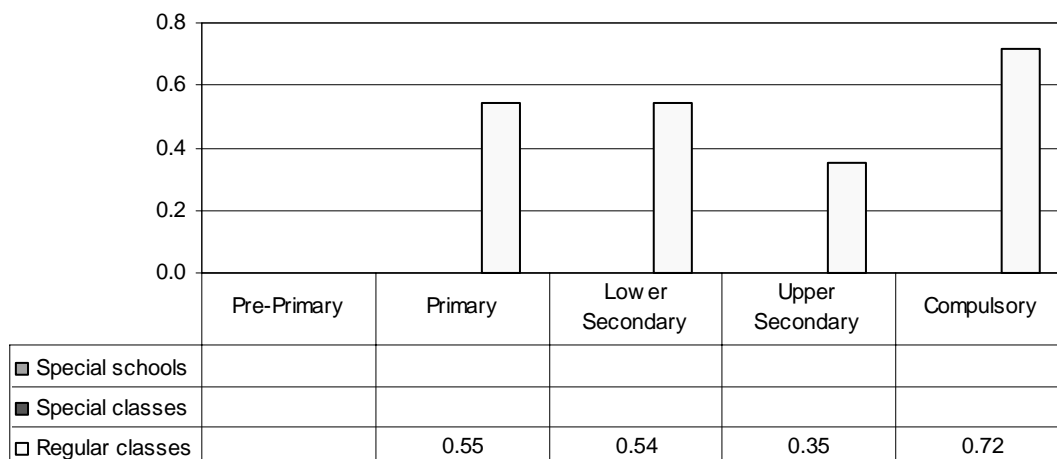
Total - Category 5. Total percentage of students with perceptual disabilities falling within the resources definition



Note: Special schools data are not applicable.
 Special classes data are not applicable.
 Regular classes data in pre-primary education are not applicable.

Category 6 Cross-national Category A - Students who have combinations of challenging disabilities.

Proportion of students with multiple disabilities by phases of education in special schools, special classes and regular classes

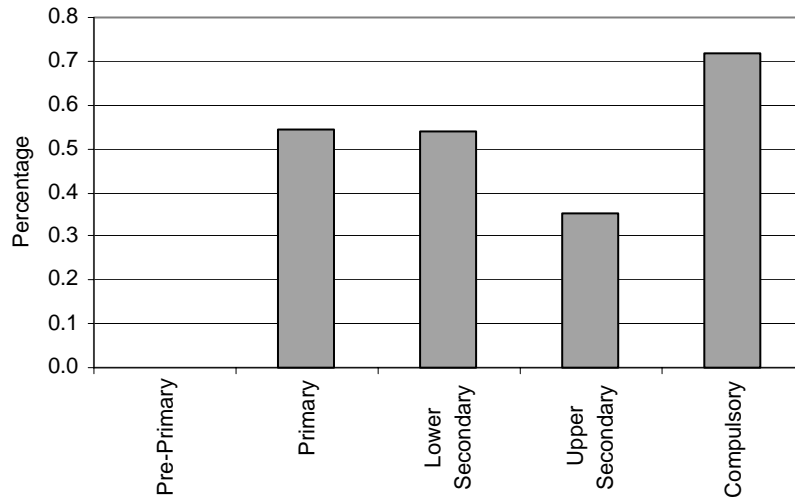


Note: Special schools data are not applicable.
 Special classes data are not applicable.
 Regular classes data in pre-primary education are not applicable.

Special Schools – Category 6. Multiple
 NOT APPLICABLE

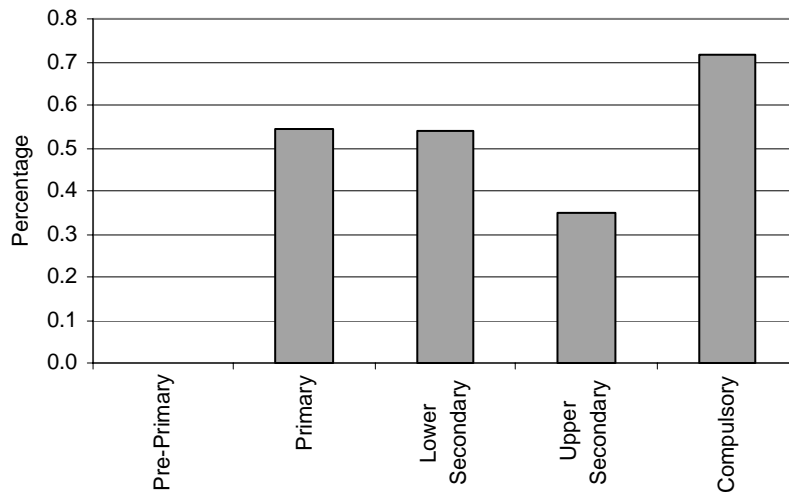
Special Classes – Category 6. Multiple
 NOT APPLICABLE

Regular Classes - Category 6. Total percentage of students with multiple disabilities falling within the resources definition, by education phase



Note: Regular classes data in pre-primary education are not applicable.

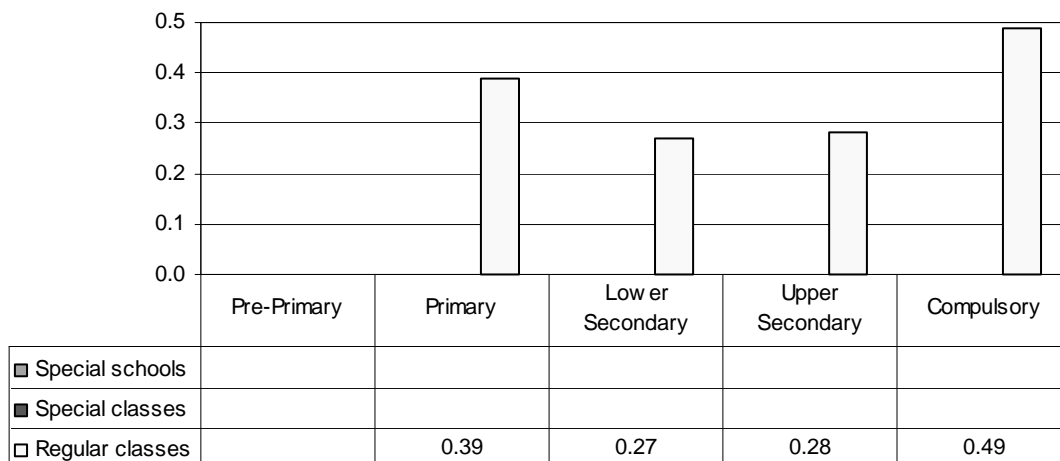
Total - Category 6. Total percentage of students with multiple disabilities falling within the resources definition



Note: Special schools data are not applicable.
 Special classes data are not applicable.
 Regular classes data in pre-primary education are not applicable.

Category 7 Cross-national Category C - Students who receive tutorial funding to acquire skills in English language.

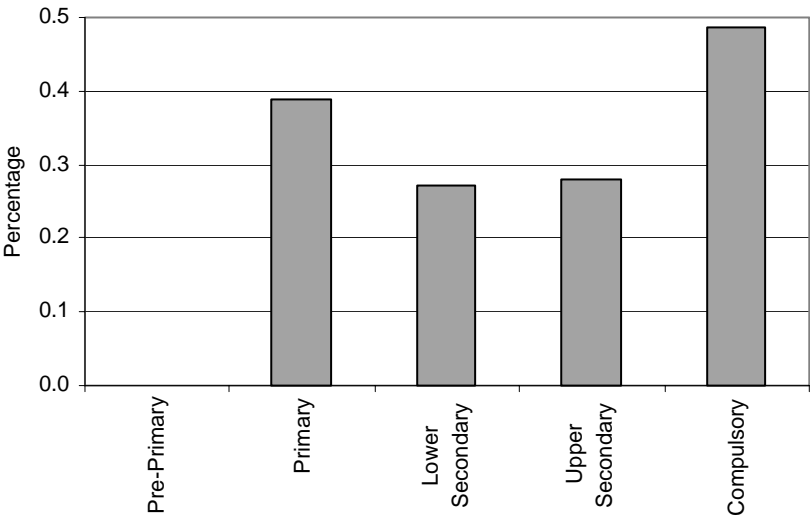
Proportion of students who are immigrants by phases of education in special schools, special classes and regular classes



Special Schools – Category 7. Immigrant
NOT APPLICABLE

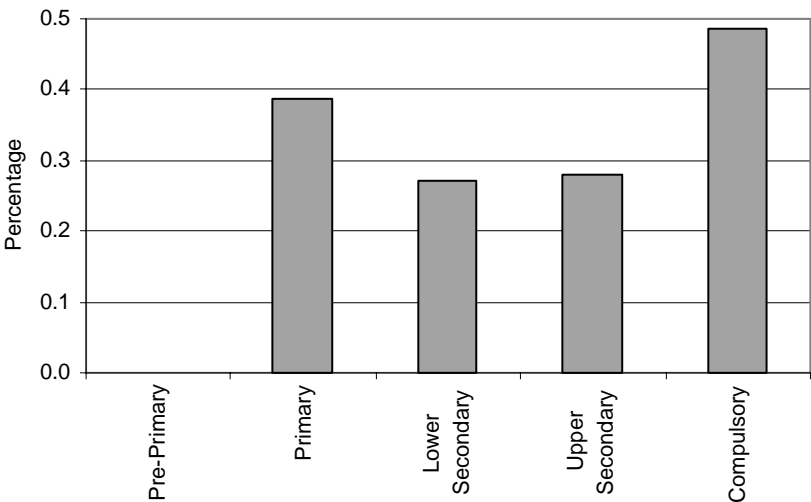
Special Classes – Category 7. Immigrant
NOT APPLICABLE

Regular Classes - Category 7. Total percentage of students who are immigrants falling within the resources definition, by education phase



Note: Regular classes data in pre-primary education are not applicable.

Total - Category 7. Total percentage of students who are immigrants falling within the resources definition



Note: Special schools data are not applicable.
 Special classes data are not applicable.
 Regular classes data in pre-primary education are not applicable.