

Globally Competitive, Locally Engaged
Valencia, 20 September 2007

Sweden - action at all levels

Susanne Andersson – VINNOVA

Anders Olsson – Region Värmland

Per Fredriksson – Karlstad University



VINNOVA

Swedish Governmental Agency for
Innovation Systems

The mission:

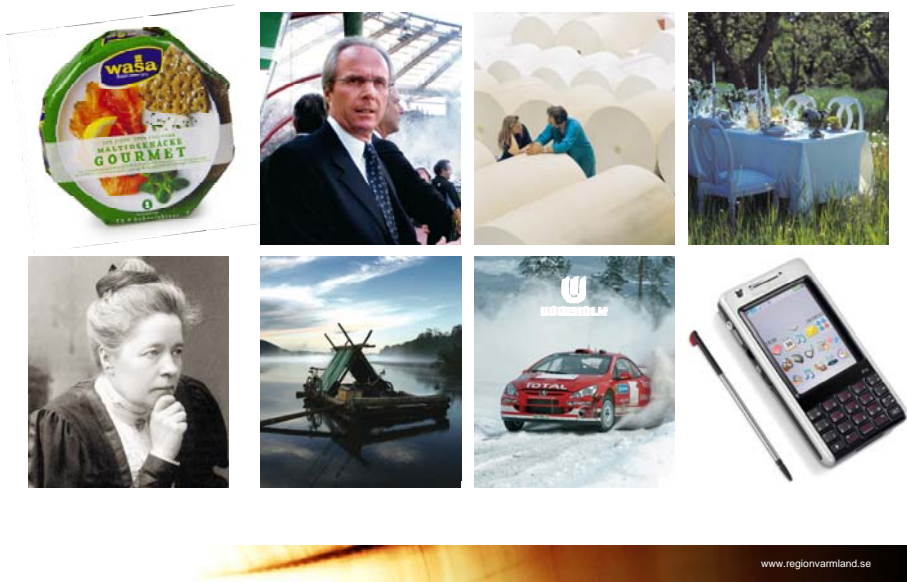
to promote sustainable growth
by financing needs-driven R&D and
developing innovation systems



Efficient innovation systems

- **Tripple Helix**
- Sustainable growth requires interaction between business, university and government/public sector





www.regionvarmland.se



Karlstad University

"Challenging the established, exploring the unknown"

- Young university (1999)
- 10 000 students
- 70 professors, 260 doctorates
- 1 000 employees
- 90 M Euro (turn over 2006)



Shaping a university!

Research and education combined with innovative ways of working creates an attractive environment for researchers, students, partners and society at large!



The Key Actors Programme

The programme support development of capabilities, methods, processes and structures to enhance the professionalism at universities as key actors in the Swedish innovation system, regarding:

- cooperation between academic researchers, industry and other actors in the surrounding society
- knowledge transfer, i.e. utilisation of knowledge and commercialisation of research results

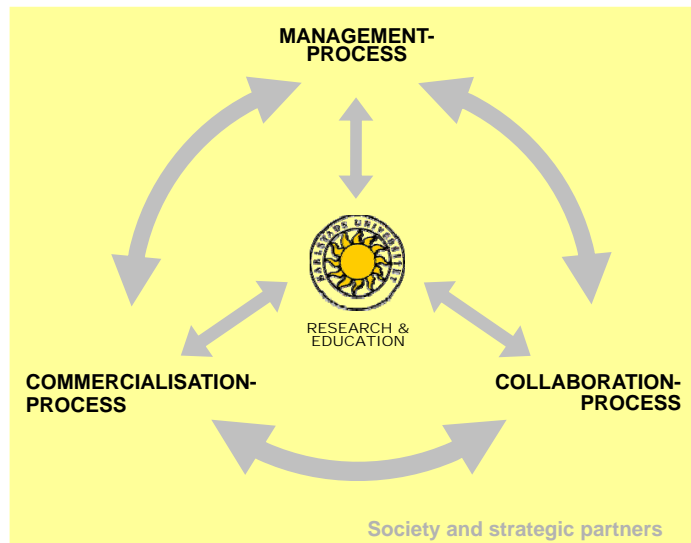
The Key Actors Programme

- Is open for experimentation and for local solutions.
- Has a focus on "best practice" and on creating networks for learning (all universities cannot be funded...)
- Includes activities for learning and exchange of experiences.
- Is a long term commitment.
- The programme runs for eight years, 25 MSEK per year.

Research-Industry Matrix

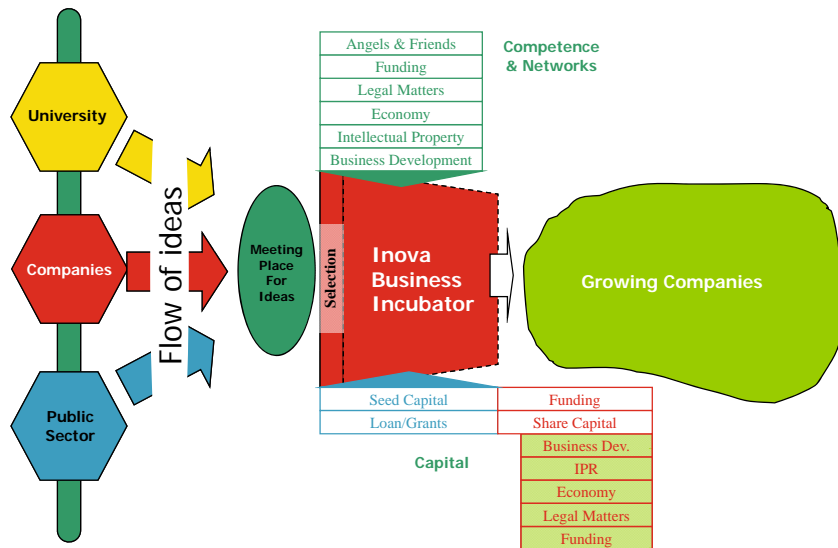
		Industry			
		Paper/ Packaging	Steel and Engineering	IT	Wellness?
Research	Consumer focus				
	Gender				
	Information technology				
	Entrepreneurship				
	One more				

INSIDE A MODERN UNIVERSITY



TRUST..

- ..between individuals
- ..between partner organisations (in roles)
- ..in a Modern University



Peer-review based performance assessment of knowledge transfer and commercialisation at universities

- Developed by a expert group within a project under CREST
- Used as a starting point for applications to the Key Actors Programme
- Performed by 24 Swedish universities in 2006
- Starting point for an increased focus on these issues within the universities



CAPACITY: developing Regional Research Agendas

- | | |
|--|---|
| 1 Region Värmland (lead partner) | 9 Jyväskylä University of Applied Science |
| 2 Øresund Science Region | 10 Länsstyrelsen Värmland |
| 3 Jyväskylä Regional Development Company Jykes Ltd | 11 Innovationplatform Twente |
| 4 Universiteit Twente | 12 University of Jyväskylä |
| 5 Saxion University of Applied Science | 13 Attityd i Karlstad AB |
| 6 Universidad Politecnica de Valencia | 14 Danish Technological Institute |
| 7 Napier University | + Trøndelag and Sunshine Coast |
| 8 Karlstad University | |

▪ 15 partners from the "OECD area"



NAPIER UNIVERSITY
EDINBURGH

Globally Competitive, Locally Engaged
Valencia, 20 September 2007

"Out of two opposites arises all creato"

(Carl von Linneus)

