



Ministry of Science
Technology and Innovation



UNDERSVISINGSS
MINISTERIET

Educational R&D: Update on New Developments

The Danish Case

Jørn Skovsgaard
Senior Advisor, Ministry of Education



Ministry of Science
Technology and Innovation



UNDERVISNINGENS
MINISTERIET

New Map of Danish Universities

Aalborg University

- Aalborg University
- Danish Building Research Institute

University of Aarhus

- University of Aarhus
- Århus School of Business
- Danish School of Education
- Danish Institute of Agricultural Sciences
- National Environmental Research Institute

University of Southern Denmark

- University of Southern Denmark
- National Institute of Public Health

The National Research Institutions

- The National Geological Surveys of Denmark and Greenland
- The National Research Centre for the Working Environment
- The National Centre for Social Research



Technical University of Denmark

- Technical University of Denmark
- Risø National Laboratory
- Danish Institute for Food and Veterinary Research
- Danish National Space Centre
- Danish Institute for Fisheries Research
- Danish Transport Research Institute

University of Copenhagen

- University of Copenhagen
- Danish University of Pharmaceutical Sciences
- Royal Veterinary and Agricultural University

IT University of Copenhagen

Copenhagen Business School

Roskilde University

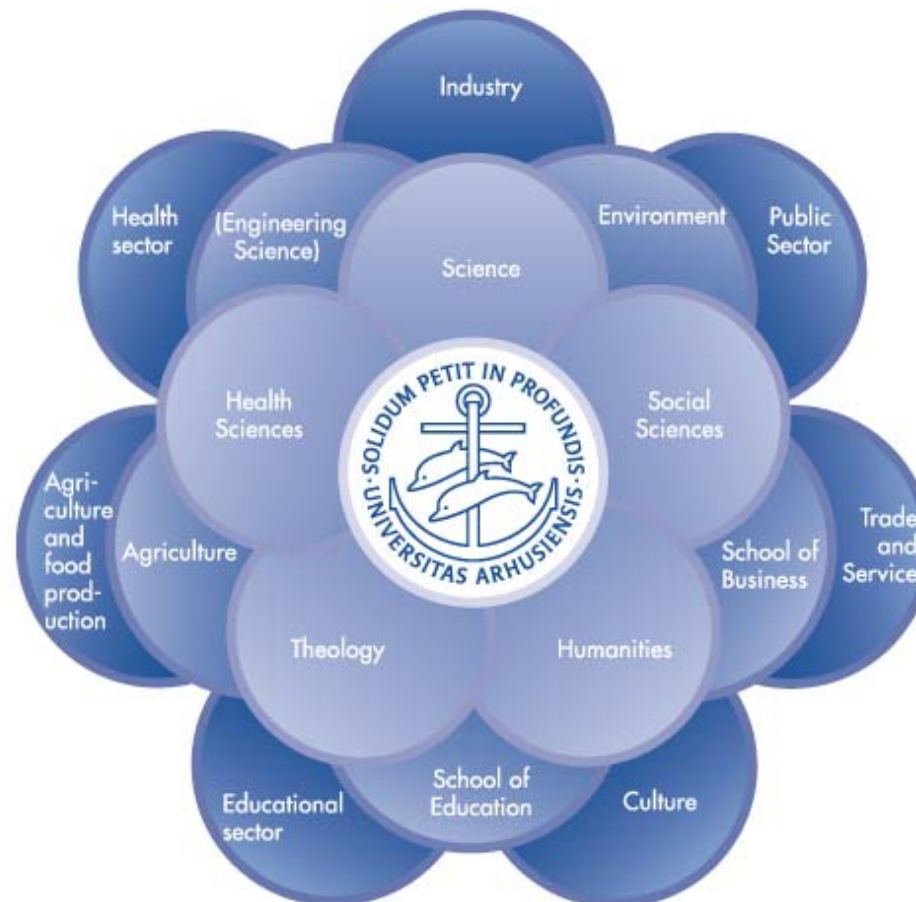


Ministry of Science
Technology and Innovation



UNDERSVISINGS
MINISTERIET

The New University of Aarhus



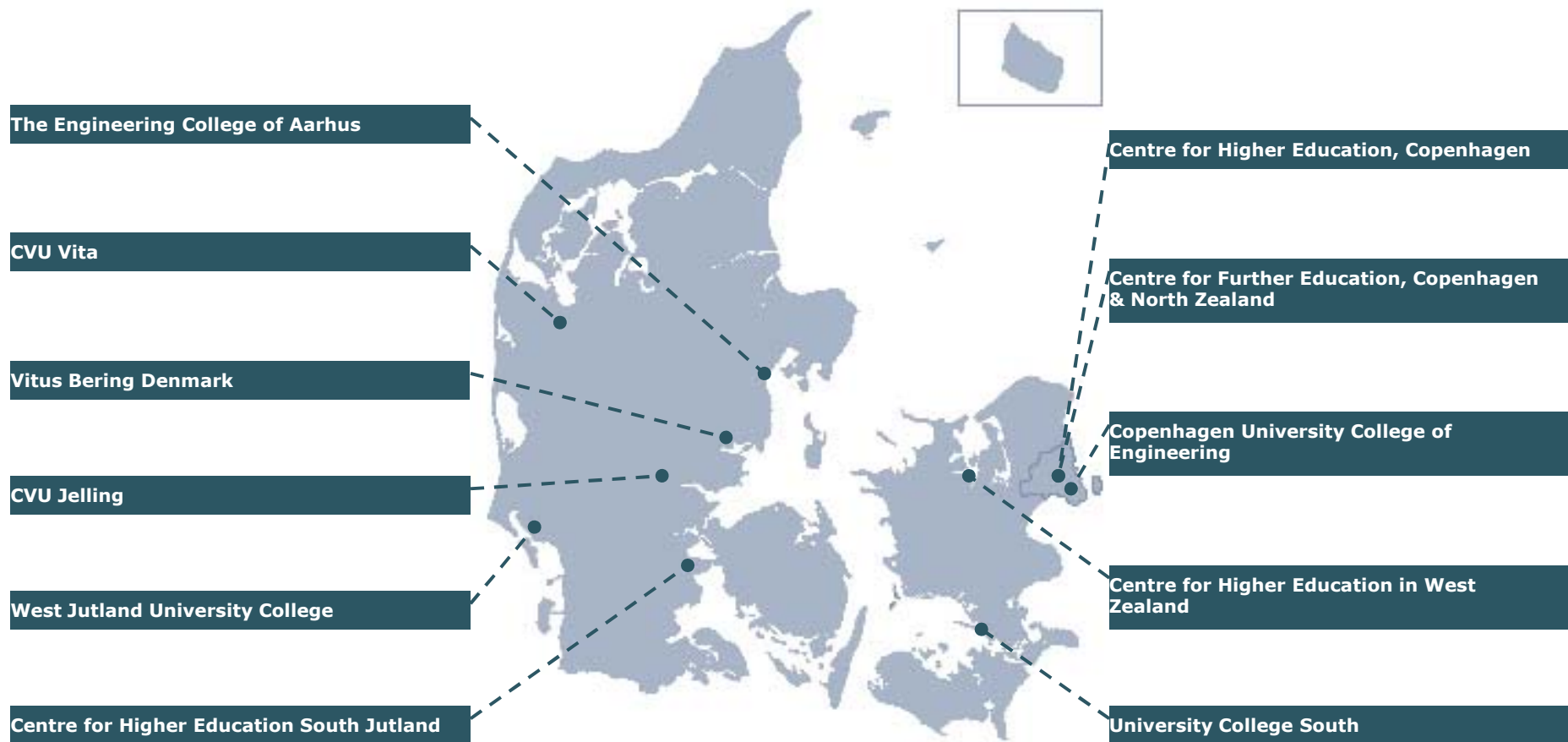


Ministry of Science
Technology and Innovation



UNDERSVISINGSS
MINISTERIET

New Map of Danish University Colleges



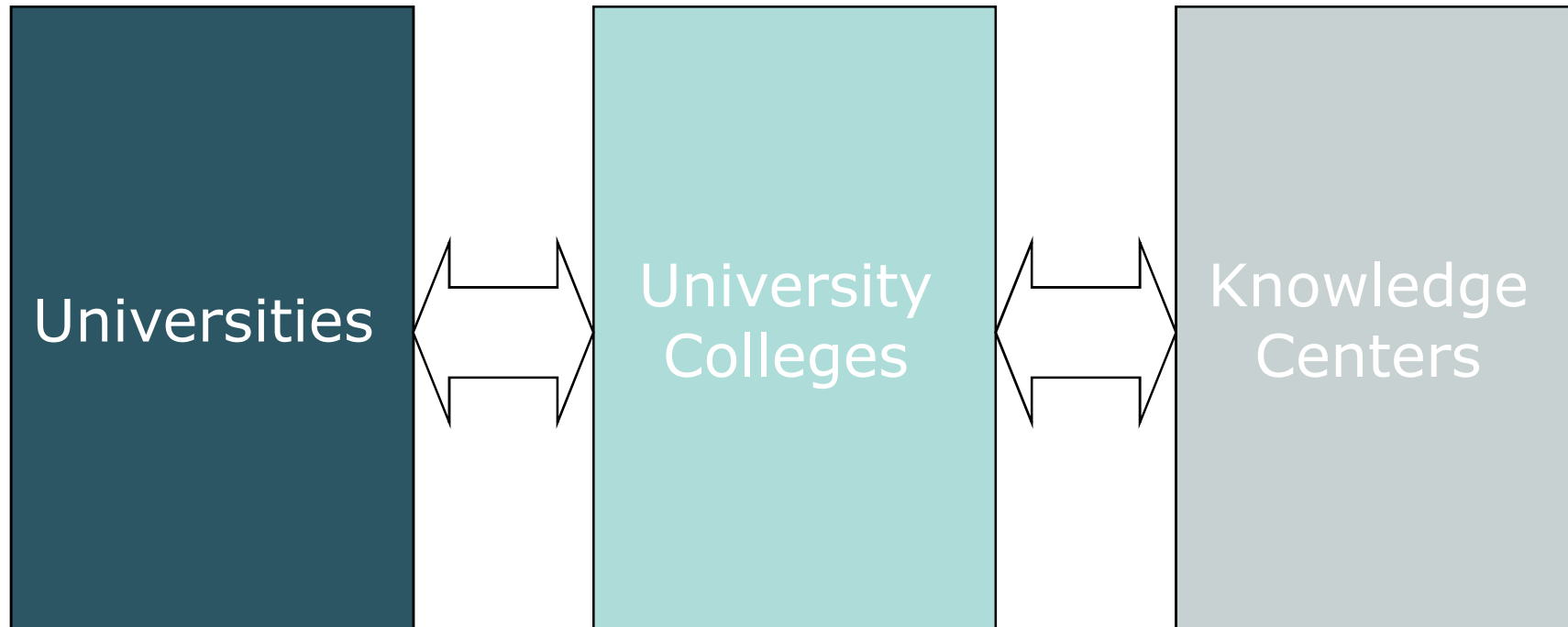


Ministry of Science
Technology and Innovation



UNDERVISNINGSS
MINISTERIET

Institutional Linkages



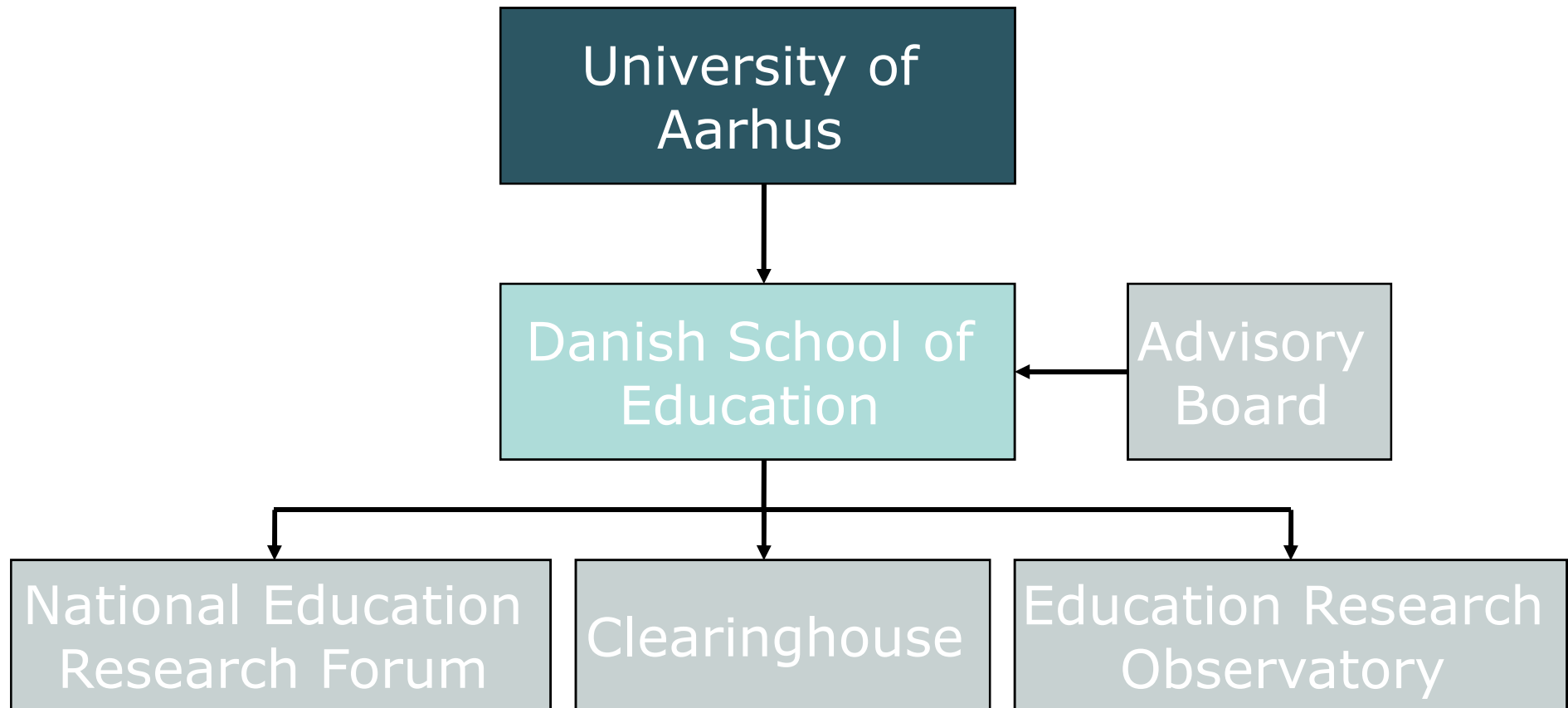


Ministry of Science
Technology and Innovation



UNDERSVISINGSS
MINISTERIET

Organisational Chart: Education School





Ministry of Science
Technology and Innovation



UNDERSVINGNINGSS
MINISTERIET

Division of labour

National level

University level



The National Education Research Forum

- Contributes to a national strategy for educational research with prioritised research areas
- Periodic reporting on developments in the Danish educational research
- Advice on the division of labour between the different research environments
- Contribute to strengthening of Danish articles and publications

Educational Research Observatory

- Develops quality criteria and –standards
- Identifies new research areas

Clearinghouse for Educational Research

- Establishes an overview of existing knowledge
- Quality control of available knowledge
- Identifies and communicates the big picture

Advisory Board

The board advises the Dean on the:

- Internal distribution of funds
- Strategies for research, education and knowledge distribution
- Content, structure and composition of the study programmes
- Need for new study programmes
- Organisation and strategic cooperation

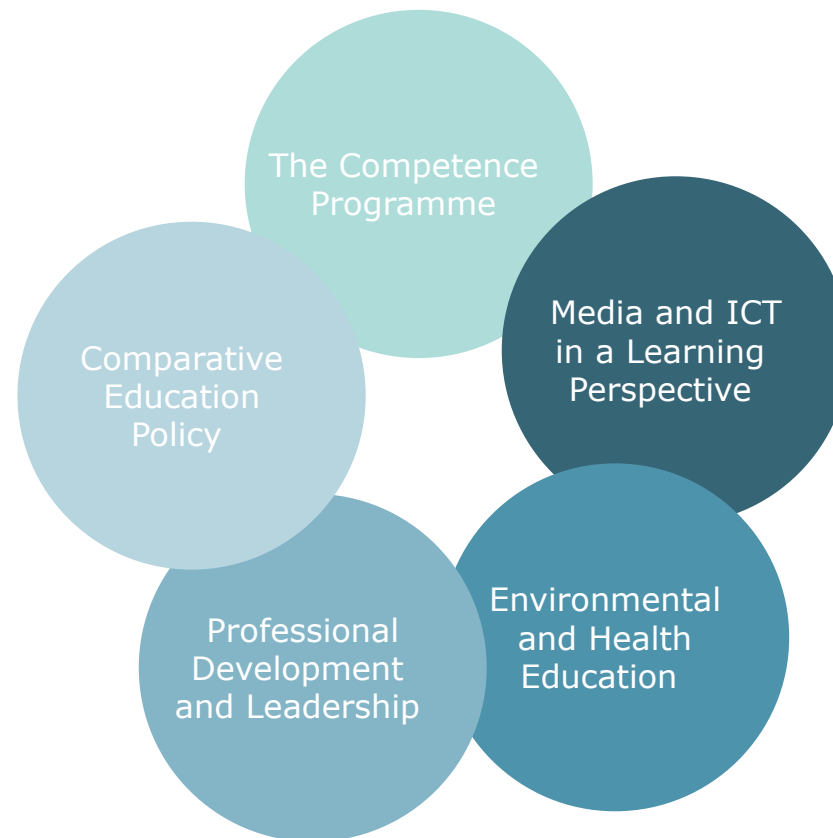


Ministry of Science
Technology and Innovation



UNDERSVISINGS
MINISTERIET

Danish School of Education: High-Priority Research Areas





Ministry of Science
Technology and Innovation



UNDERVISNINGSS
MINISTERIET

Main priorities in following years

- Integrate the School of Education and educational research back into the sectors (primary school, gymnasiums etc.)
- Strengthen quantitative evidence-based educational research



Ministry of Science
Technology and Innovation



UNDERVISNINGSS
MINISTERIET

Political Pressure and Research Strategies

Political Pressure

- Interest groups
- Public debate
- Politicians etc.

Clearinghouse

Research
Strategy

School of Education



Ministry of Science
Technology and Innovation



UNDERVISNINGSS
MINISTERIET

Final Points

1. Structures before strategies
2. National Education Research Forum as a midwife for cooperation and trust between stakeholders
3. Quantitative analyses and longitudinal studies are important



Ministry of Science
Technology and Innovation



UNDERVISNINGSS
MINISTERIET

Thank you