

***Challenges in Data Collection:  
China's Engagement with Africa***

***Africa's Emerging Partnerships, Expert  
Meeting; 12 Oct 2010***

***Dambudzo Muzenda, OECD – DAF - Investment***

# Overview

1. Example of how to measure Chinese activities in Africa
2. Challenges raised in analysing China's activities in Africa
3. How to understand and overcome these challenges

# Compiling Index of Chinese Engagement

- Context:
  - Understand nature and level of Chinese engagement with individual African countries
  - Look at economic and political aspect
  - Comprised of six components:
    - i) FDI
    - ii) Trade
    - iii) Presence of Chinese Embassy
    - iv) Presence of Defense Attache
    - v) Number of official visits

Indicator	Source	Years Covered
China's Outward FDI Flow, USD 10,000	2007 Statistical Bulletin, Ministry of Commerce, People's Republic of China	2003-2006
China's Trade Volume	2008 China Commerce Yearbook. Ministry of Commerce, People's Republic of China	2007
Chinese embassies	Ministry of Foreign Affairs  Website	2009
Chinese leaders' visits(a president or premier)	Various news articles retrieved  from Lexis Nexis	2002-2007
Chinese attaches	David Shinn, China into Africa  (Rotberg ed.)	2008

<b>Strong Engagement</b>	<b>Partial Engagement</b>	<b>Low Engagement</b>
1) South Africa	Zimbabwe	Malawi
Namibia	Congo, DRC	Central African Republic
Nigeria	Madagascar	Benin
Egypt	Uganda	Chad
Algeria	Mali	Sierra Leone
Liberia	Angola	Mauritania
Tanzania	Mauritius	Guinea-Bissau
Cameroon	Gabon	Comoros
Morocco	Senegal	Burundi
Ethiopia	Ghana	Congo-Republic
Zambia	Equatorial Guinea	Sao-Tome and Principe
Sudan	Eritrea	Somalia
Libya	Niger	Swaziland
Tunisia	Botswana	Cote d'Ivoire
Mozambique	Togo	The Gambia
Kenya	Rwanda	Burkina Faso
Seychelles	Guinea	53) Cape Verde
	Djibouti	

# Challenges

## 1. Hard to find country-level data

e.g. UNCTAD data on investment inflows;

-Centre for Chinese Studies at Stellenbosch

University has data on the type and amount of projects undertaken by Chinese companies in African countries

-Investment treaties: China Commerce Yearbook

## 2. Some data mostly estimates & conflicting

-E.g. Immigration figures

- “There are already more Chinese living in Nigeria than there were Britons during the height of the empire” (approx. 1 million) – Behar 2009
- BUT: 100,000 in Nigeria (Asche, 2008)
- At least 750,000 Chinese working or living for extended periods on the continent (official Chinese source)

### 3. What is counted?

-FDI-Trade-Aid Mix:

- Concessional loans, technical assistance, export credits, conditional grants
- Difference between commitments and disbursements

-Danger of double counting

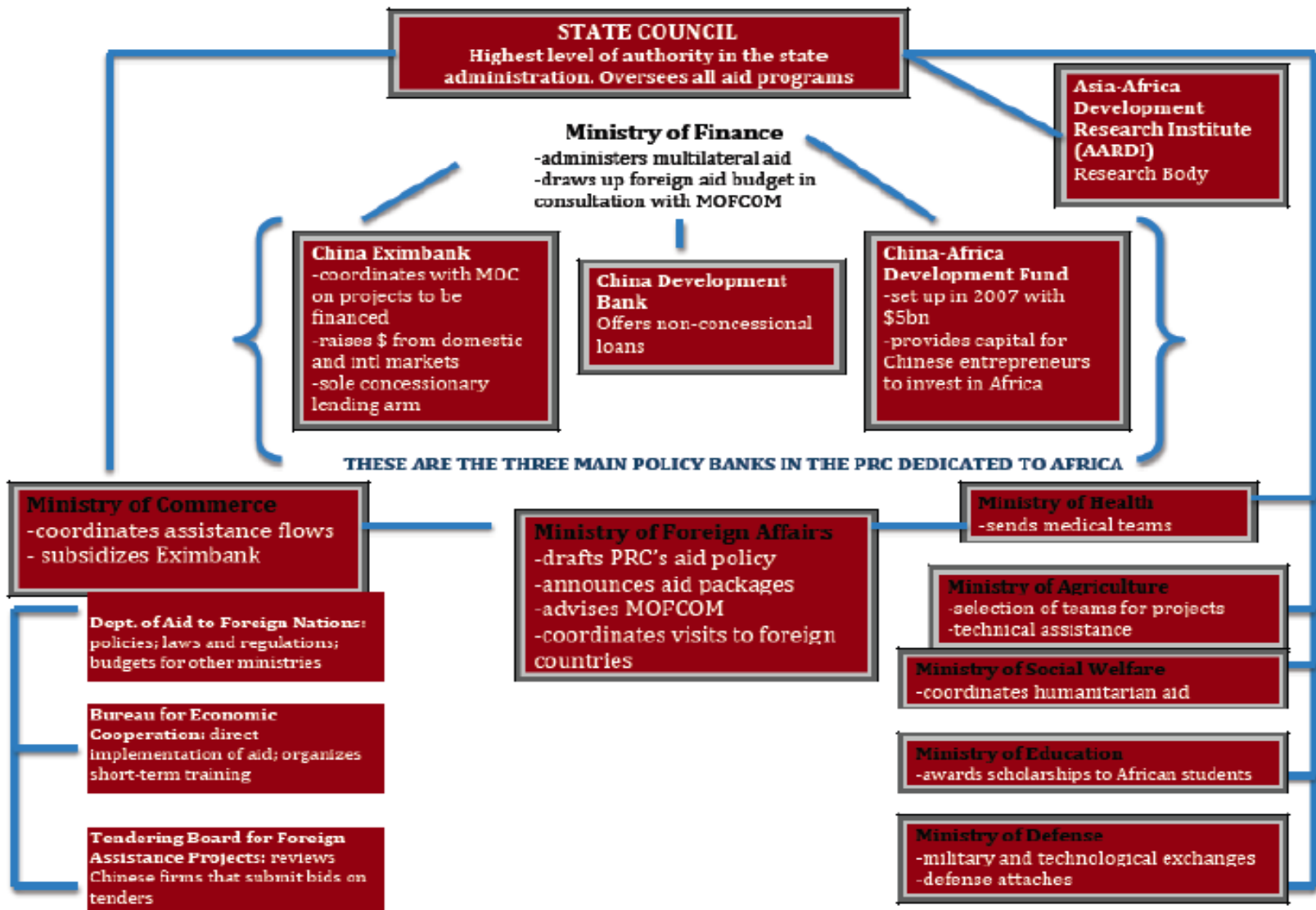


# **However, data challenges must be seen in context**

## **1. Structure of PRC government**

- national government organs still coming to terms with engagement with Africa
- some provinces have their own economic ties with African countries
- private companies acting independently of the central govt.

# Structure of PRC Development Assistance Organs



## 2. Problematic data issues within China

- Study on China's GDP in national income accounts – household consumption:
  - i) different official explanations on how the various (household) consumption components are calculated are rarely identical
  - ii) The official explanations of deriving the various consumption components from the underlying data is not replicable/ does not match official data
  - iii) time series comparisons of the consumption data with the underlying data reveal roller-coaster relationships that stretch credulity

*Deconstructing China's GDP Statistics; Carsten Holz*

### 3. How are statistics gathered in PRC?

-National Bureau of Statistics:

- Reports to State Council
- The sum of provincial GDP routinely exceeds nationwide GDP.

- Min of Commerce Circular to all provinces, pvt enterprises and gvt agencies under central gvt control:
  - Use of the Statistical System of Direct Overseas Investment
  - Commerce depts at provincial level liaise with local foreign exchange depts
  - Includes number of employed people in enterprises in host country as measure of contribution of enterprises outside China to the host country; also counts taxes paid by enterprises outside China

## 4. But, not unique to China

- Other emerging countries face data challenges e.g. Brazil does not publish its ODA data
- Developed countries/ Western donors have flaws too
- Need to generate capacity from the African government side to collect data and report on how much is disbursed

**THANK YOU**

**dambudzo.muzenda@oecd.org**