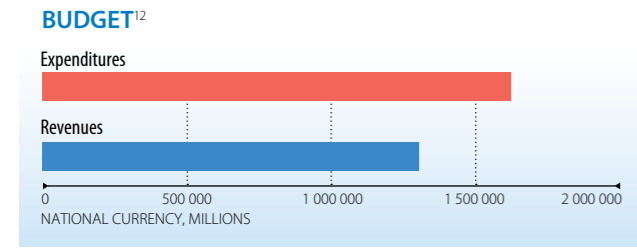
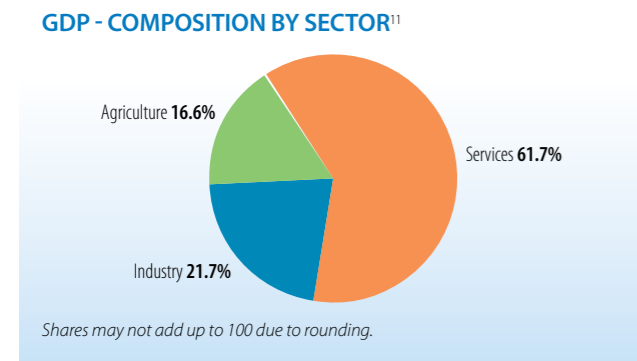
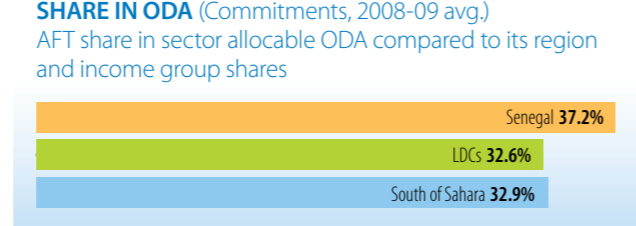
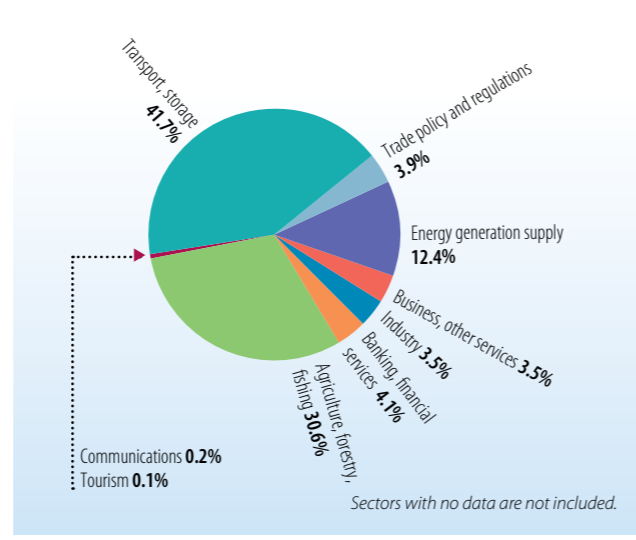


BASIC INDICATORS	
Population (thousands, 2009) ¹	12 534
GDP (millions current USD, 2009) ²	13 059
GDP real growth rate (annual %, 2009) ³	2.2
GDP per capita, PPP (current international dollars, 2009) ⁴	1 816.6
Income group ⁵	LDC
Poverty (% living below USD 1.25/day, 2005) ⁶	33.5
Income share held by highest 20% (% , 2005) ⁷	45.9
Labour force, female (% of total labour force, 2008) ⁸	43.1
Human development index (2010) ⁹	144/169
Aid dependency (ODA/GNI, 2008) ¹⁰	8.0



- ### SOURCES:
- WTO Trade Profiles 2010
 - WTO Trade Profiles 2010
 - World Bank - National Accounts Data
 - World Bank - World Development Indicators
 - DAC List of ODA Recipients 2009/2010
 - World Bank - World Development Indicators
 - World Bank - World Development Indicators
 - World Bank - World Development Indicators
 - UNDP - Human Development Report 2010
 - World Bank - World Development Indicators
 - World Bank - National Accounts Data
 - IMF's World Economic Outlook Database, Government Finance
 - OECD-DAC, Aid activities database (CRS)
 - OECD/WTO Questionnaire
 - World Bank - World Trade Indicators
 - ITU, World Bank - World Development Indicators
 - ITC (WTO/UNCTAD)
 - ITC (WTO/UNCTAD)
 - WTO Secretariat
 - WTO Secretariat
 - WTO Secretariat

AID FLOWS ¹³			
Aid for Trade	Commitments		Disbursements
	2002-05 avg.	2009	2009
Trade policy and regulations	4 115	15 240	3 866
Economic infrastructure	88 703	214 179	108 044
Building productive capacity	99 460	164 941	105 706
Of which: Trade development marker	..	41 173	31 715
Trade-related adjustment	..	9	..
Total AFT	192 278	394 369	217 616
<i>AFT per capita (USD)</i>	<i>18</i>	<i>31</i>	<i>17</i>



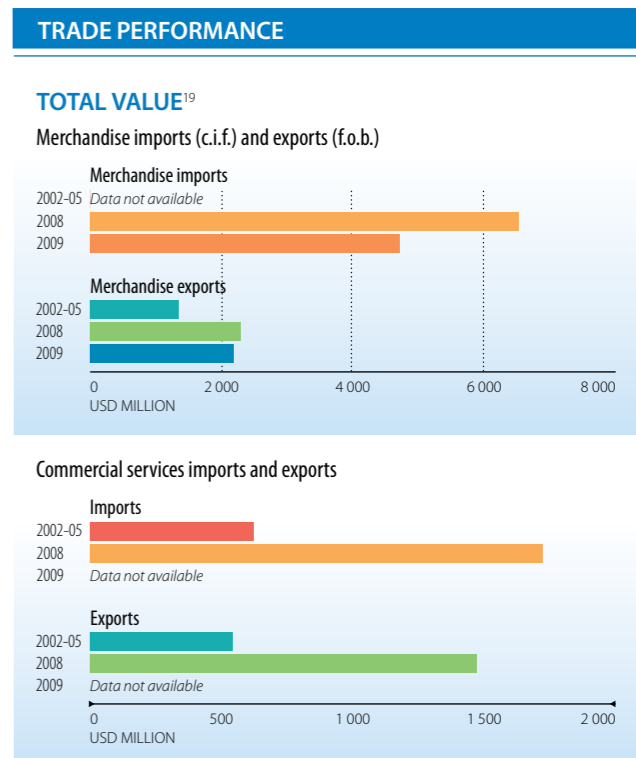
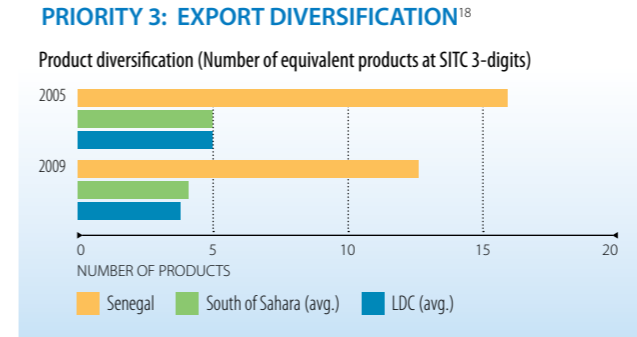
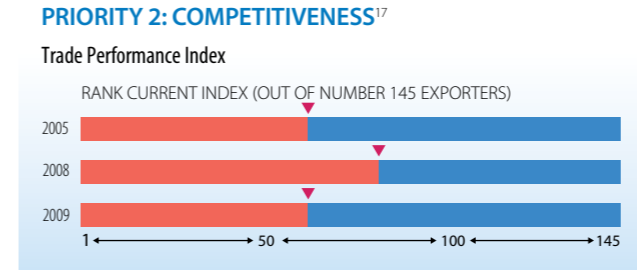
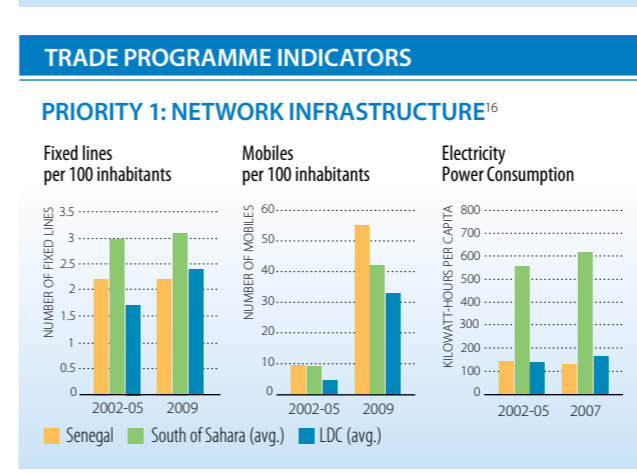
TOP DONORS (USD '000, 2009 constant)

Commitments	2008-09 avg.
World Bank	111 930
EU Institutions	54 542
France	40 461
African Dev. Bank	34 688
Canada	24 170
United States	23 091

Disbursements	2008-09 avg.
World Bank	72 620
EU Institutions	62 654
France	36 020
African Dev. Bank	21 199
Japan	11 551
Spain	8 547

TRADE MAINSTREAMING¹⁴

Changes to aid-for-trade priorities have been mainstreamed in the national development plan and the country is planning to update its operational strategies accordingly. The EIF focal point and committee are involved in overseeing the trade agenda. The EIF has had a significant impact on the ability to mainstream trade in the national development plan.



MAIN TRADING PARTNERS²⁰

Imports by main origin (% share of total)

	2007	2008	2009
European Union	46.6	39.8	43.9
Nigeria	8.4	11.9	8.8
China	5.7	6.8	8.3

Exports by main destination (% share of total)

	2007	2008	2009
European Union	25.7	23.3	20.6
Mali	24.0	17.0	19.2
India	6.7	11.6	7.8

