

**TRANSAT**

# OECD Seminar

*GETTING THE SKILLS BASE RIGHT: SHORTENING THE  
TRANSITION FROM SCHOOL TO WORK*

**RESOC Antwerp - TRANSIT project**

# Structure of presentation



## **1. Introduction**

- 1.1 Belgium and Flanders
- 1.2 Youth unemployment in the region

## **2. Policy process on the local level**

- 2.1 RESOC Antwerp
- 2.2 Rationale of the project
- 2.3 Decision making processes

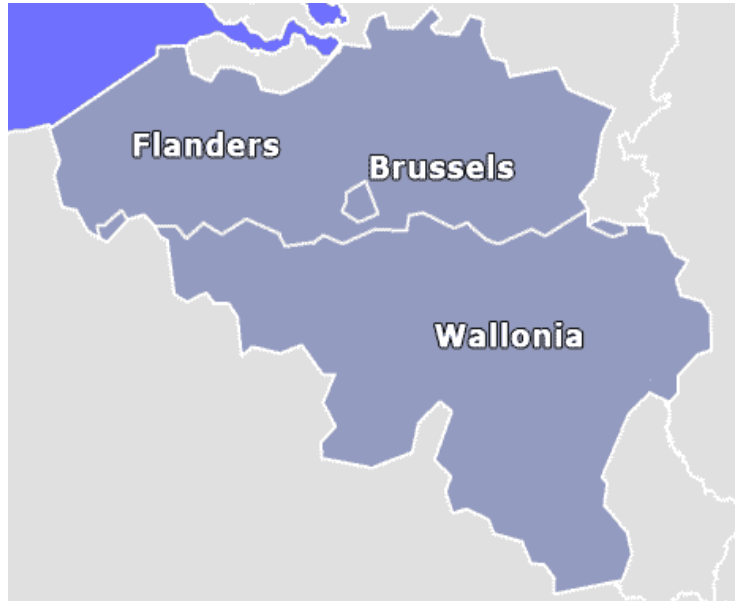
## **3. The TRANSIT Project**

- 3.1 Structure
- 3.2 Activities
- 3.3 Practical Information

## **4. Results and Recommendations**

# 1. Introduction

## 1.1 Belgium and Flanders

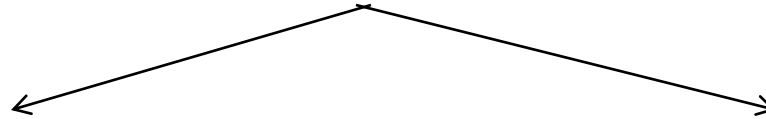


## Kingdom of Belgium

- Federal state
- Population: 10.5 million (UN, 2008)
- Official languages: Dutch (local variant called Flemish), French, German
- GNI per capita: US \$40,410 (World Bank, 2007)
- Different federal units: communities and regions.



## Employment and labour policy: flemish jurisdiction



### **Regional mandate**

- Job placement
- Employment Programmes

### **Community mandate**

- Education and training
- Assistance

<b>Flemish Department of Work and Social Economy</b>	<ul style="list-style-type: none"><li>•Labour Migration</li><li>•Diversity at work</li><li>•Private job placement</li><li>•Corporate responsibility</li><li>•Social Economy and employment measures</li></ul>
<b>VDAB (Flemish Public Employment and Vocational Service)</b>	<ul style="list-style-type: none"><li>•Job placement</li><li>•Training/education</li><li>•Assistance</li></ul>

## 1.2 Youth unemployment in the region

Youth unemployment = % of unemployed youngsters (age 15 – 24)

Belgium **17.3** % (EUROSTAT)

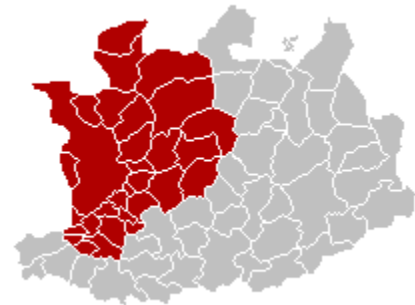
### Remarks to this statistics:

- Depends on how students can combine studying and working (due to legislation, students in Belgium are less likely to combine both in comparison with neighboring countries).
- Depends on age limit with regards to compulsory education (18 in Belgium).

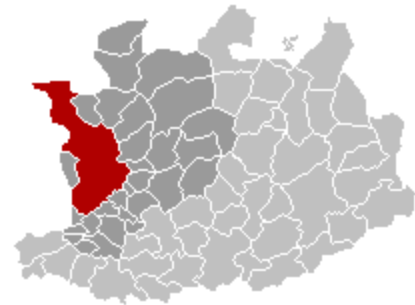
—————> % of unemployment rate younger than 24 = better indicator.



Province: NUTS 2



District: NUTS 3

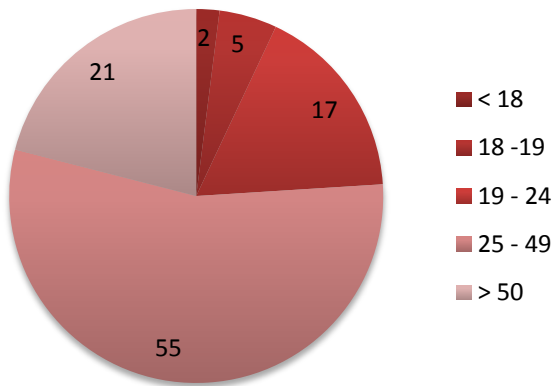


City of Antwerp: NUTS 4

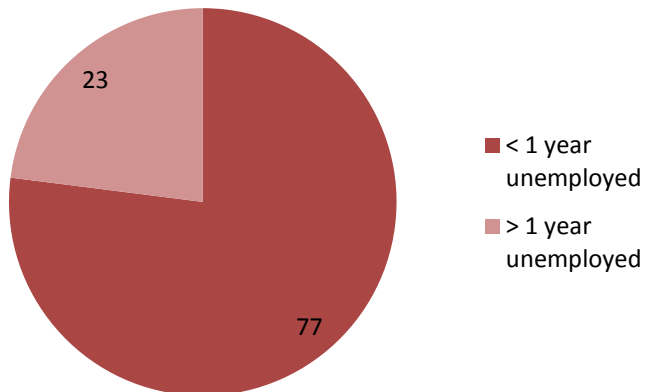
	<b>Unemployment Rate</b>	<b>% younger than 25</b>	<b>% longer than 1 year unemployed</b>
<b>Flanders</b>	7.43 %	25%	18.5%
<b>District Antwerp</b>	10.32%	24%	23%
<b>Antwerp City</b>	15.5 %	22%	26%

Source: VDAB Arvastat 2009

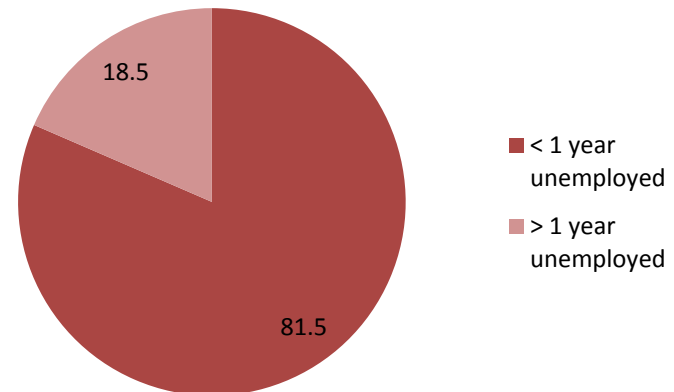
\* note: not all students leaving school are registered in the VDAB system.



District Antwerp  
Unemployment by age group



District Antwerp  
Unemployment (< 25) by duration



Flanders  
Unemployment (< 25) by duration



## **Additional Information**

- City of Antwerp: increase unemployment rate with almost double in comparison with Flanders (Data 2008).
- Youth unemployment rise with 29.4%

## **Possible thresholds to work facing youngsters**

- Lack of knowledge on labor market institutions/social legislation.
- Combination of structural factors like gender, origin and educational level.

—————> High unemployment level: necessity to start thinking out of the box.

## 2. Policy Process on the Local Level

### 2.1 RESOC Antwerp



#### Regional Socio – Economic Consultative Committee (RESOC)

- Social partners
- Representatives of municipalities (NUTS 4)
- Province administration (NUTS 2)
- Organized on the district level (NUTS 3) and includes 30 municipalities (1 million inhabitants)



Tripartite advisory body:

- Subregional economy and employment issues
- Consultary function between policy levels
- Think tank on the relevant issues

## Regional Pact Antwerp

- Strategic outset on socio - economic development in the region for all different partners.
- Concrete framework for cooperation between the different actors on the short, middle and long term.
- Translation into specific commitments.

## 2.2 Rationale

### Objective:

- To project prepares students in their last year of vocational education for the transition between the life of a student to the life of a professional. It introduces them to their rights and duties on the labour market.
- To fulfill this objective: different approaches of the involved trade unions and non governmental organisations are coordinated.

### Tools: different thematic workshops:

- labour law
- applying for a job
- social security
- flemish labour policy



## History:

- Tradition social partners: information on transition to labour market to their ideologically related institutions.
- Within the consultatory environment of RESOC: raised the idea of a more coordinated approach: increase of efficiency of the activities: social partners organise one moment and schools come to a fixed location.

## Target:

- Students coming from vocational programmes as those students were likely to start working after graduating.

## 2.3 Decision Making Processes

### Illustration of multi level governance:

- local, regional and national policymakers/civil society are all actors on the local level: conceptualization and implementation of the project.
- TRANSIT project = part of the Regional Pact as a concrete action to take in the area of socio - economic development.
- RESOC secretariat: intermediate facilitator: legitimization because of its mandate (stipulated by the RESOC committee).

**➡ local, regional and national policymakers and non – governmental organizations are the actors on the local level, conceptualizing and implementing the project.**

# 3. The TRANSIT Project



## 3.1 Structure

- Steering committee: aims and objectives, evaluation and conceptual framework.
- Working groups: concrete implementation of the project (members = all relevant stakeholders)
- RESOC: operational leadership: coordination, dissemination,...



## 3.2 Activities

### The TRANSIT Days:

- Introduction to students in their last year of vocational education: transition to professional life.
- Content: consultative process
- Four workshops: delegation of experts

### TRANSIT WEB

- Information and relevant links
- Content: partnership
- Province of Antwerp: practical development.



# TRANSIT

HOME SITEMAP LINKS LEERKRACHTEN NORMAL CONTRAST



## INFODAGEN

De TRANSIT schoolwerkplaatsen helpen je op een doeltreffende manier je eigen weg te vinden op de arbeidsmarkt. In een halve dag maak je kennis met verschillende aspecten van de overgang school/werk. Dit jaar zijn de workshops ingekast waartoe elke deelnemer alle workshops kan volgen.

[Lees meer!](#)

## NIEUWS

**TRANSIT PAS**

15:04

**...Voorstel voor vier weken vaderschapsverlof**

Twintig weken moederschapsrust en vier weken vaderschapsverlof vragen Europese parlementsliden. Ze stellen extra maatregelen voor om de combinatie gezin en werk gemakkelijker te maken.

# WWW.TRANSITWEB.BE

### 3.3 Practical Information

Edition	Students Reached	Budget
<b>2007 – 2008</b> <b>Schoolverlatersdagen</b>	2000 students from 34 schools	€ 12 000
<b>2008 – 2009 TRANSIT</b>	2500 students from 40 schools	€ 54 000
<b>2009 – 2010 TRANSIT</b>	Increased coverage, both in terms of students and schools	€ 25 000

- '08 – '09 budget: one time subsidies by the Flemish government ([www.vlaandereninactie.be](http://www.vlaandereninactie.be))
- Design TRANSIT: external bureau

# TRANSIT



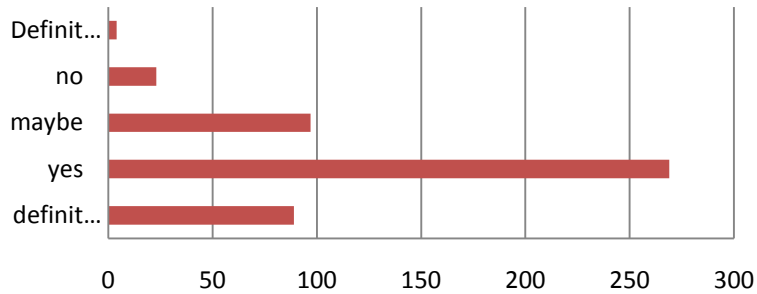
# TRANSIT



- Evaluation by students

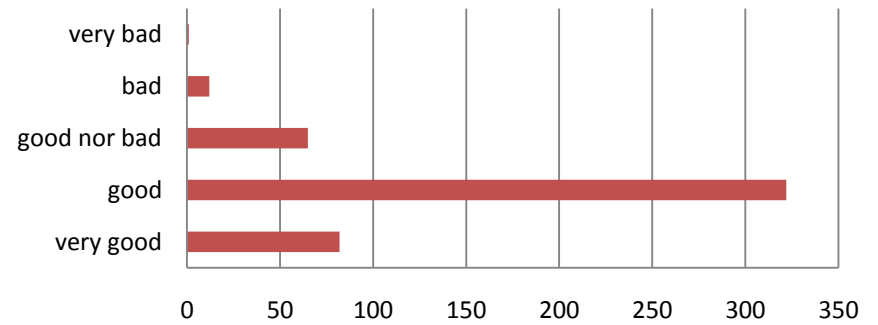


**Question 1: Would you recommend TRANSIT to your friends?**



definitely	yes	maybe	no	Definitely not
------------	-----	-------	----	----------------

**Question 4: I believe this method of teaching is ...**



	very good	good	good nor bad	bad	very bad
Series1	82	322	65	12	1

# 4. Conclusions and Recommendations



## **Conclusion**

- New approach a succes: better fitting to the target group.
- More positive evaluation by students

## **Future challenges**

- Bigger scope of schools/students
- Broadening of topics (independent entrepreneurship)
- Broadening of the target public (all secondary school programmes)

## **Good Practices?**

- Finding common ground for action between relevant actors
- Availability of neutral secretariat
- Constant check and balances between different partners



# Contact information

## **Christian Labour Union**

Johan Stassen

[Johan.stassen@acv-csc.be](mailto:Johan.stassen@acv-csc.be)

Tel: +32/(3)222 71 51

## **RESOC Antwerp**

Sophie van Haasen

[Sophie.vanhaasen@resocantwerpen.be](mailto:Sophie.vanhaasen@resocantwerpen.be)

Tel: +32/(3)202 05 54