

Urban/Rural Distribution and Economic Growth

WAF

Sahel and West Africa Club Secretariat (SWAC/OECD)
West African Futures: settlement, market and food security
by T. Allen, October 2011

www.oecd.org/swac/waf

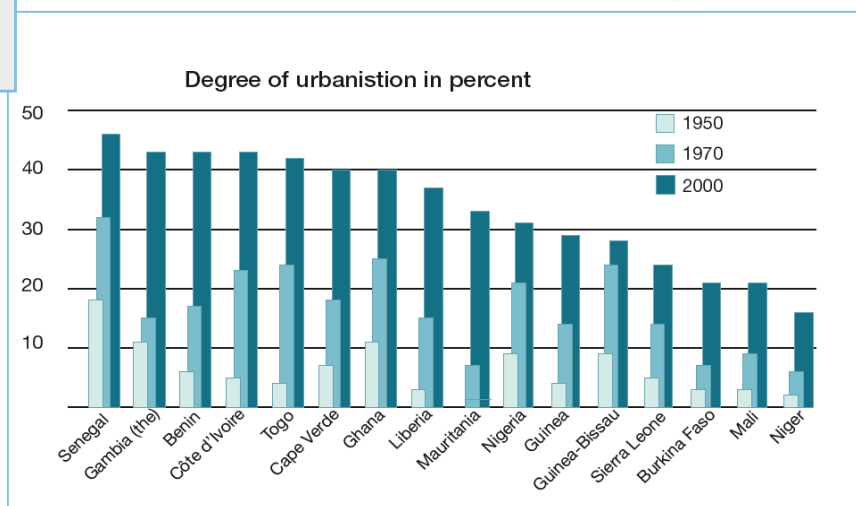
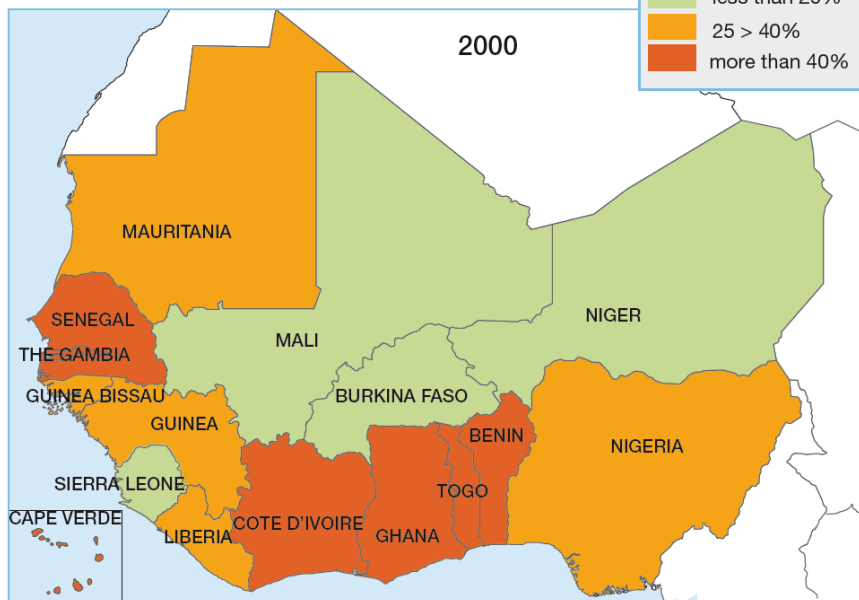
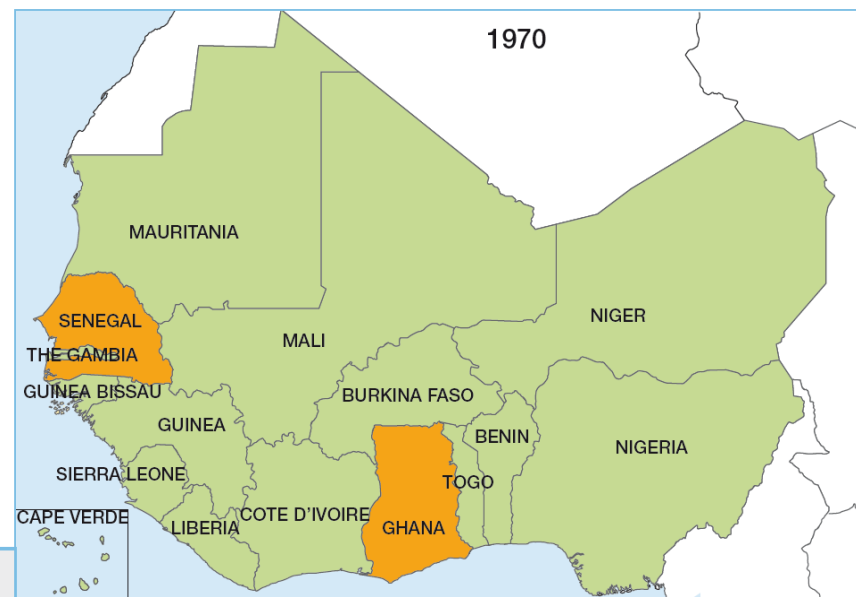


How settlement patterns impact food security issues?

How settlement patterns impact food security issues?

This question:

- *can only be tackled **at the regional level**;*
- *and requires to **revisit** current settlement trends.*



Factors favouring economic development:

- *Concentration of activities and people;*
- *Decline of transportation costs;*
- *Removal of barriers to movement of goods, people and information.*

Factors favouring economic development:

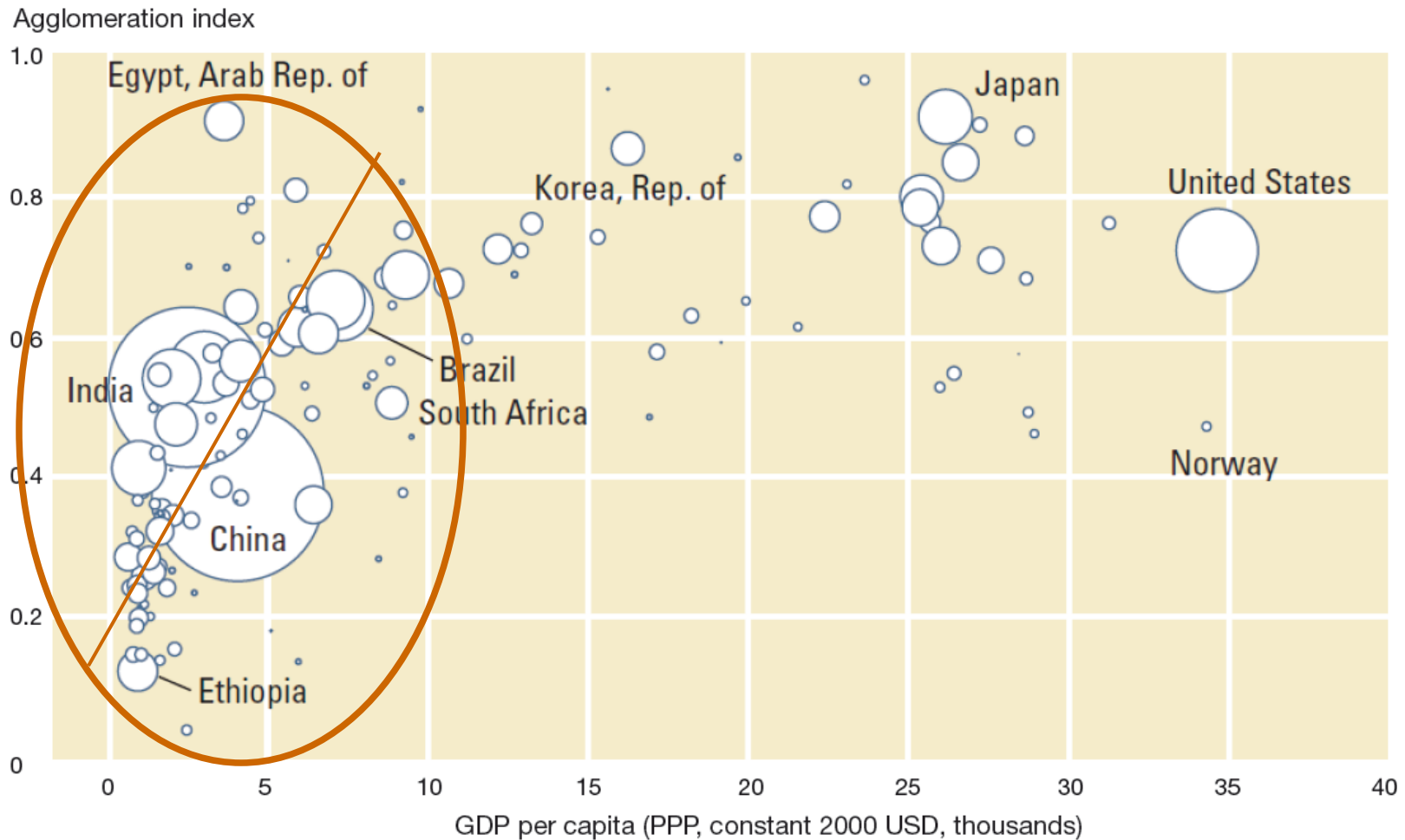
- ***Concentration of activities and people;***
- *Decline of transportation costs;*
- *Removal of barriers to movement of goods, people and information.*



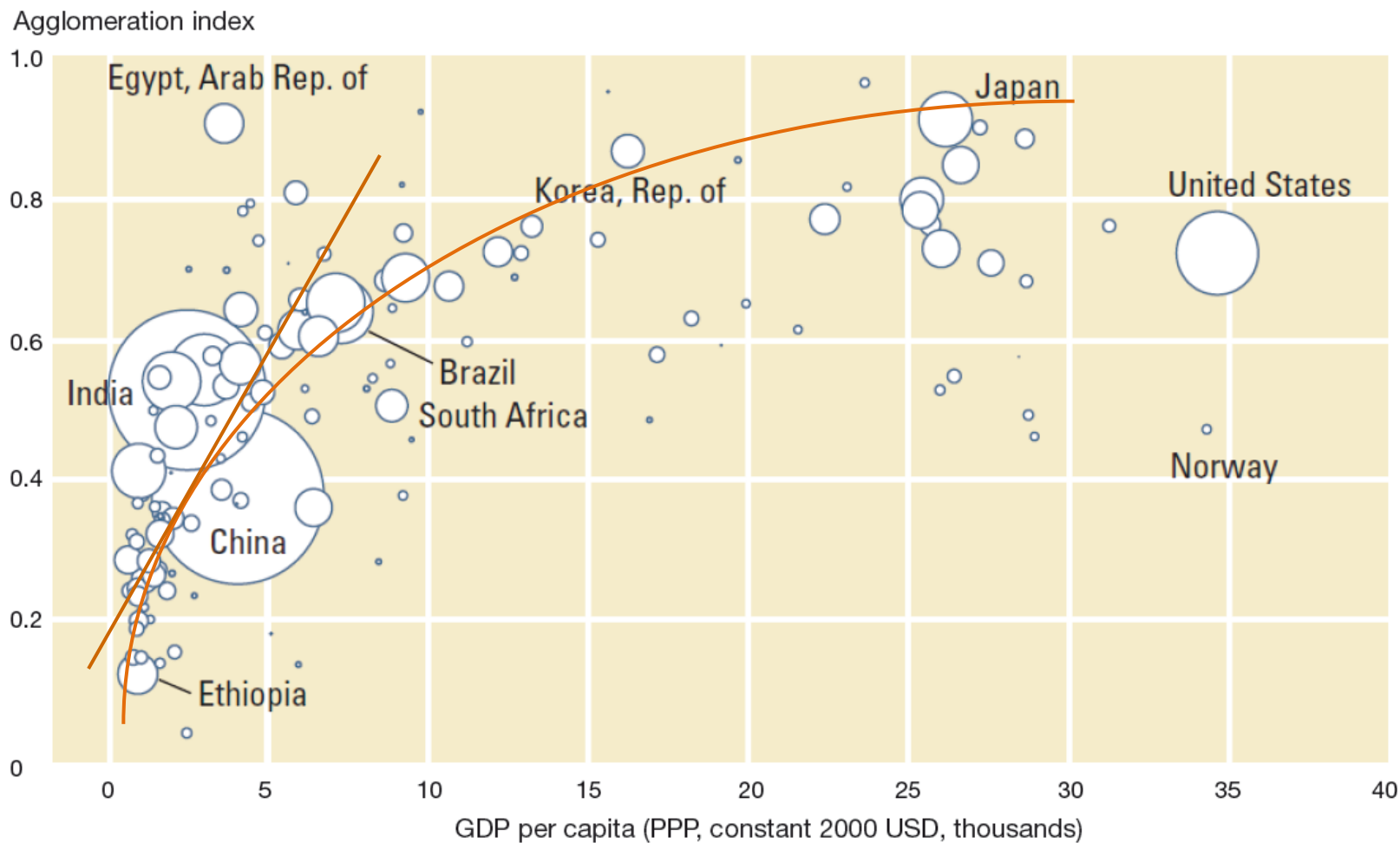
Source : WDR 2009, page 60



Source : WDR 2009, page 60



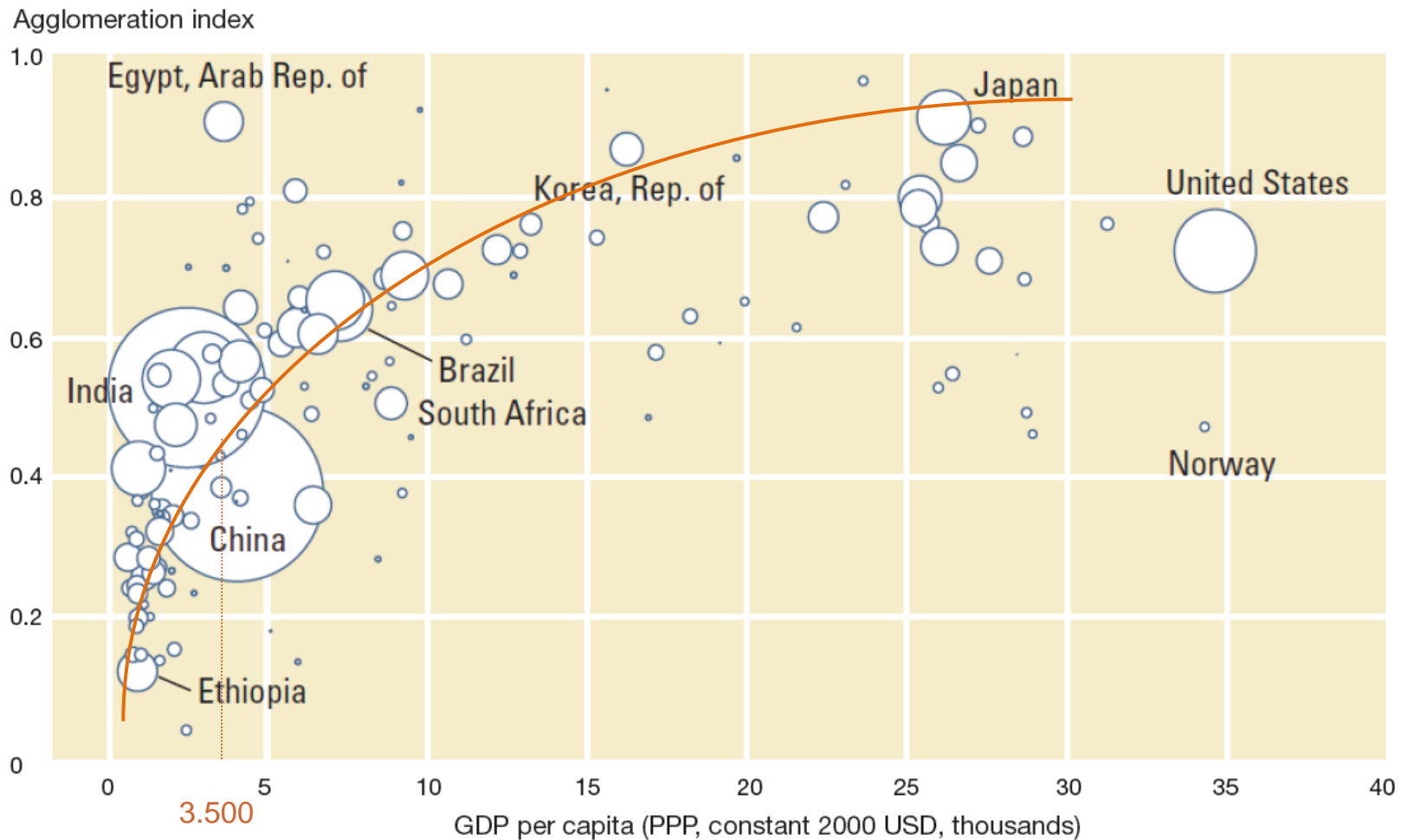
Source : WDR 2009, page 60



Source : WDR 2009, page 60



Source : WDR 2009, page 60



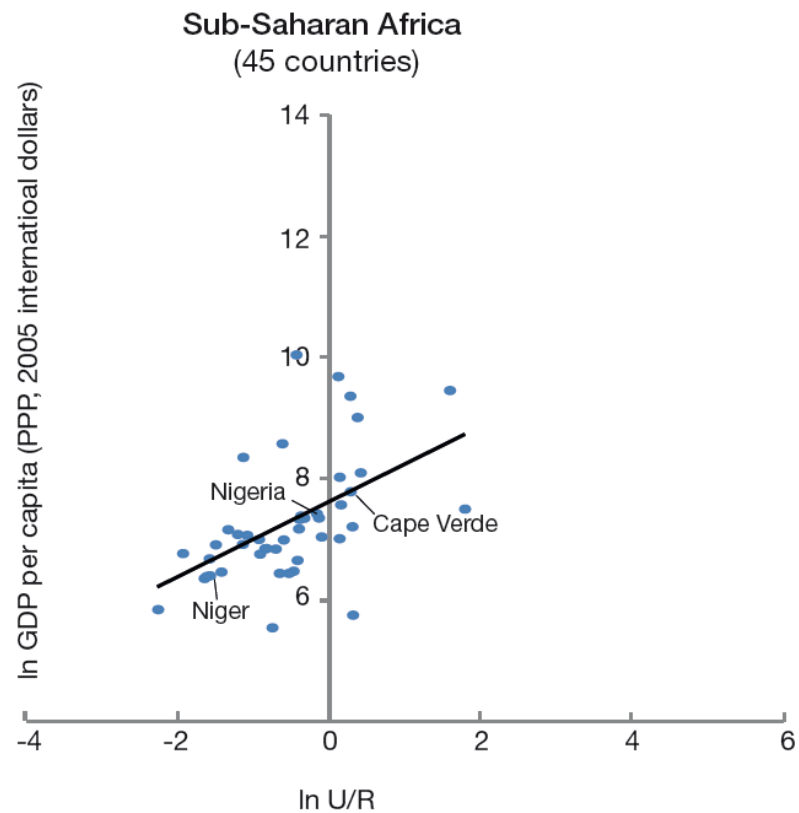
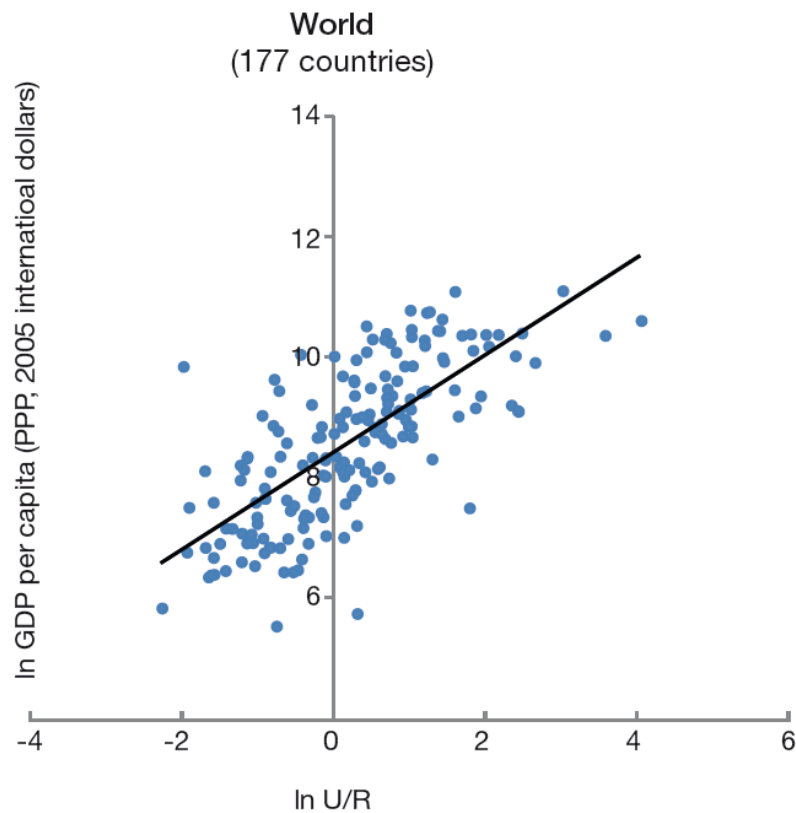
Source : WDR 2009, page 60

Urban/Rural ratio:

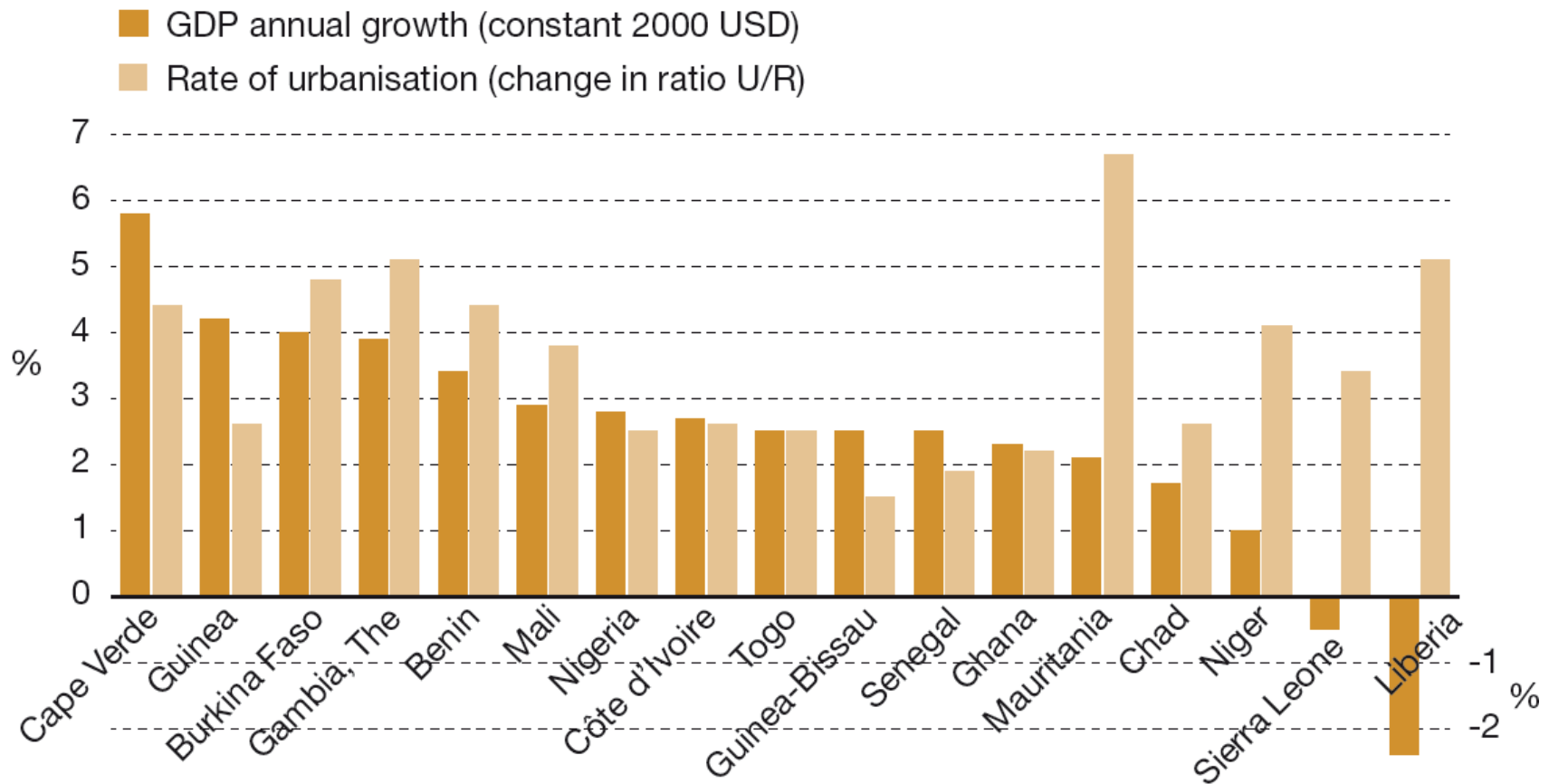
$$U/R = \frac{\textit{Urban population}}{\textit{Rural population}}$$

Two advantages:

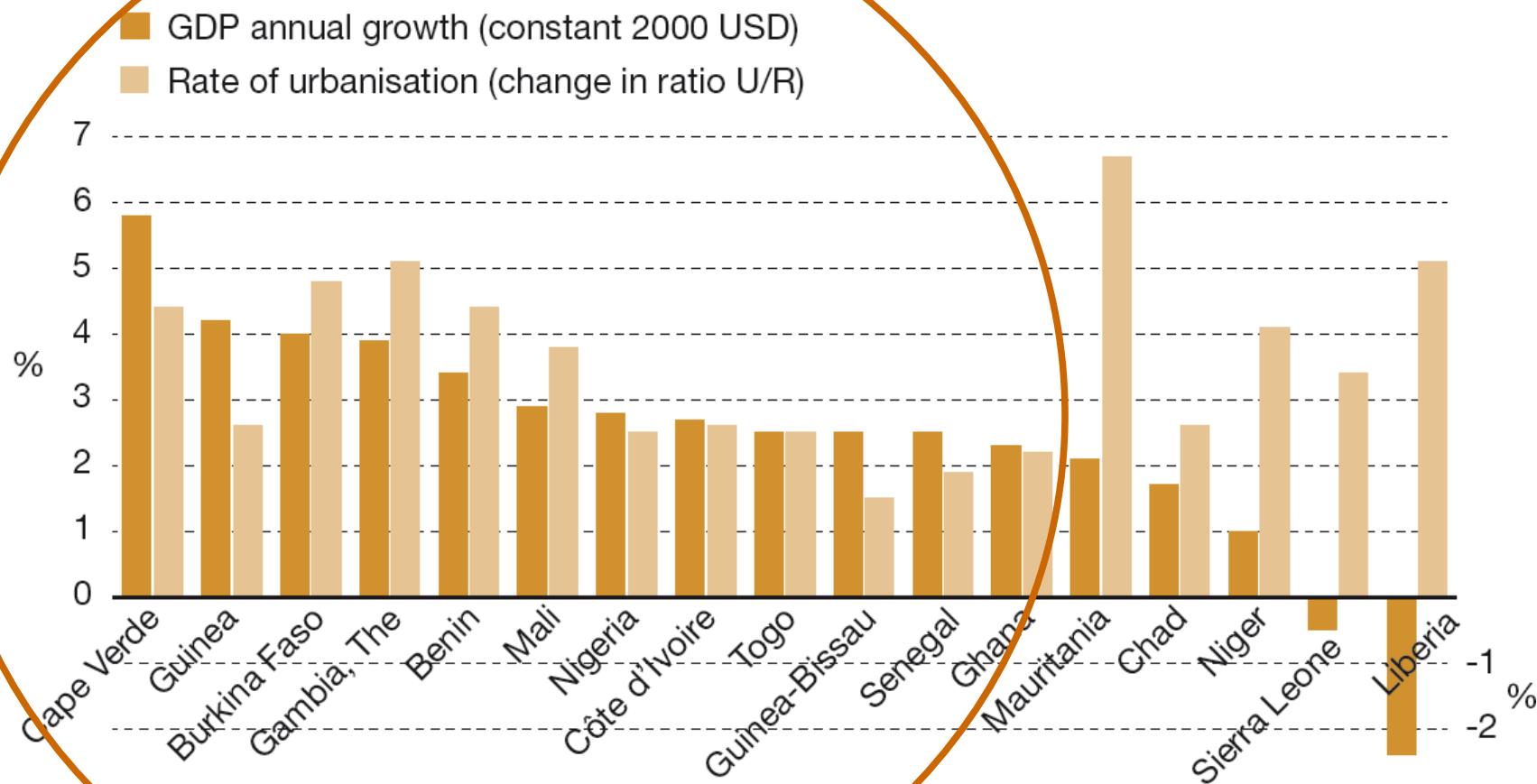
- 1) **An uncapped indicator;**
- 2) ...



Sources: Authors' calculation, World Bank, WDI 2011



Sources: Authors' calculation based on Africapolis and World Bank, WDI 2011



Sources: Authors' calculation based on Africapolis and World Bank, WDI 2011

Urban/Rural ratio:

$$U/R = \frac{\textit{Urban population}}{\textit{Rural population}}$$

Two advantages:

- 1) A non-capped indicator;
- 2) **A proxy for the ratio of non-producing food consumers to producers.**

Country	1960	1970	1980	1990	2000
Niger	0.03	0.05	0.10	0.16	0.18
Burkina Faso	0.03	0.06	0.11	0.19	0.25
Mali	0.04	0.09	0.17	0.22	0.28
Guinea-Bissau	0.10	0.23	0.19	0.29	0.36
Guinea	0.06	0.18	0.30	0.37	0.39
Sierra Leone	0.08	0.17	0.27	0.33	0.45
West Africa	0.14	0.23	0.32	0.42	0.51
Mauritania		0.08	0.28	0.58	0.54
Nigeria	0.17	0.26	0.32	0.43	0.54
Togo	0.09	0.27	0.36	0.44	0.58
Ghana	0.22	0.35	0.39	0.47	0.66
Benin	0.10	0.18	0.43	0.57	0.67
Côte d'Ivoire	0.14	0.33	0.52	0.62	0.71
Senegal	0.28	0.41	0.60	0.70	0.73
Liberia	0.08	0.18	0.39	0.64	0.81
Gambia, The	0.09	0.18	0.36	0.59	0.82
Cape Verde	0.20	0.23	0.34	0.55	0.84

Sources: Authors' calculations based on Africapolis and World Bank, WDI 2011

Country	1960	1970	1980	1990	2000
Niger	0.03	0.05	0.10	0.16	0.18
Burkina Faso	0.03	0.06	0.11	0.19	0.25
Mali	0.04	0.09	0.17	0.22	0.28
Guinea-Bissau	0.10	0.23	0.19	0.29	0.36
Guinea	0.06	0.18	0.30	0.37	0.39
Sierra Leone	0.08	0.17	0.27	0.33	0.45
West Africa	0.14	0.23	0.32	0.42	0.51
Mauritania		0.08	0.28	0.58	0.54
Nigeria	0.17	0.26	0.32	0.43	0.54
Togo	0.09	0.27	0.36	0.44	0.58
Ghana	0.22	0.35	0.39	0.47	0.66
Benin	0.10	0.18	0.43	0.57	0.67
Côte d'Ivoire	0.14	0.33	0.52	0.62	0.71
Senegal	0.28	0.41	0.60	0.70	0.73
Liberia	0.08	0.18	0.39	0.64	0.81
Gambia, The	0.09	0.18	0.36	0.59	0.82
Cape Verde	0.20	0.23	0.34	0.55	0.84

Sources: Authors' calculations based on Africapolis and World Bank, WDI 2011

Evolution of the U/R ratio

Country	1960	1970	1980	1990	2000
Niger	0.03	0.05	0.10	0.16	0.18
Burkina Faso	0.03	0.06	0.11	0.19	0.25
Mali	0.04	0.09	0.17	0.22	0.28
Guinea-Bissau	0.10	0.23	0.19	0.29	0.36
Guinea	0.06	0.18	0.30	0.37	0.39
Sierra Leone	0.08	0.17	0.27	0.33	0.45
West Africa	0.14	0.23	0.32	0.42	0.51
Mauritania		0.08	0.28	0.58	0.54
Nigeria	0.17	0.26	0.32	0.43	0.54
Togo	0.09	0.27	0.36	0.44	0.58
Ghana	0.22	0.35	0.39	0.47	0.66
Benin	0.10	0.18	0.43	0.57	0.67
Côte d'Ivoire	0.14	0.33	0.52	0.62	0.71
Senegal	0.28	0.41	0.60	0.70	0.73
Liberia	0.08	0.18	0.39	0.64	0.81
Gambia, The	0.09	0.18	0.36	0.59	0.82
Cape Verde	0.20	0.23	0.34	0.55	0.84

Sources: Authors' calculations based on Africapolis and World Bank, WDI 2011

The Urban/Rural trend induces **new characteristics of food insecurity:**

- *The urbanisation process creates demand for marketed agricultural products;*
- *Up-stream and down-stream economic activities linked to agricultural production have sustained the development of the urban centres.*