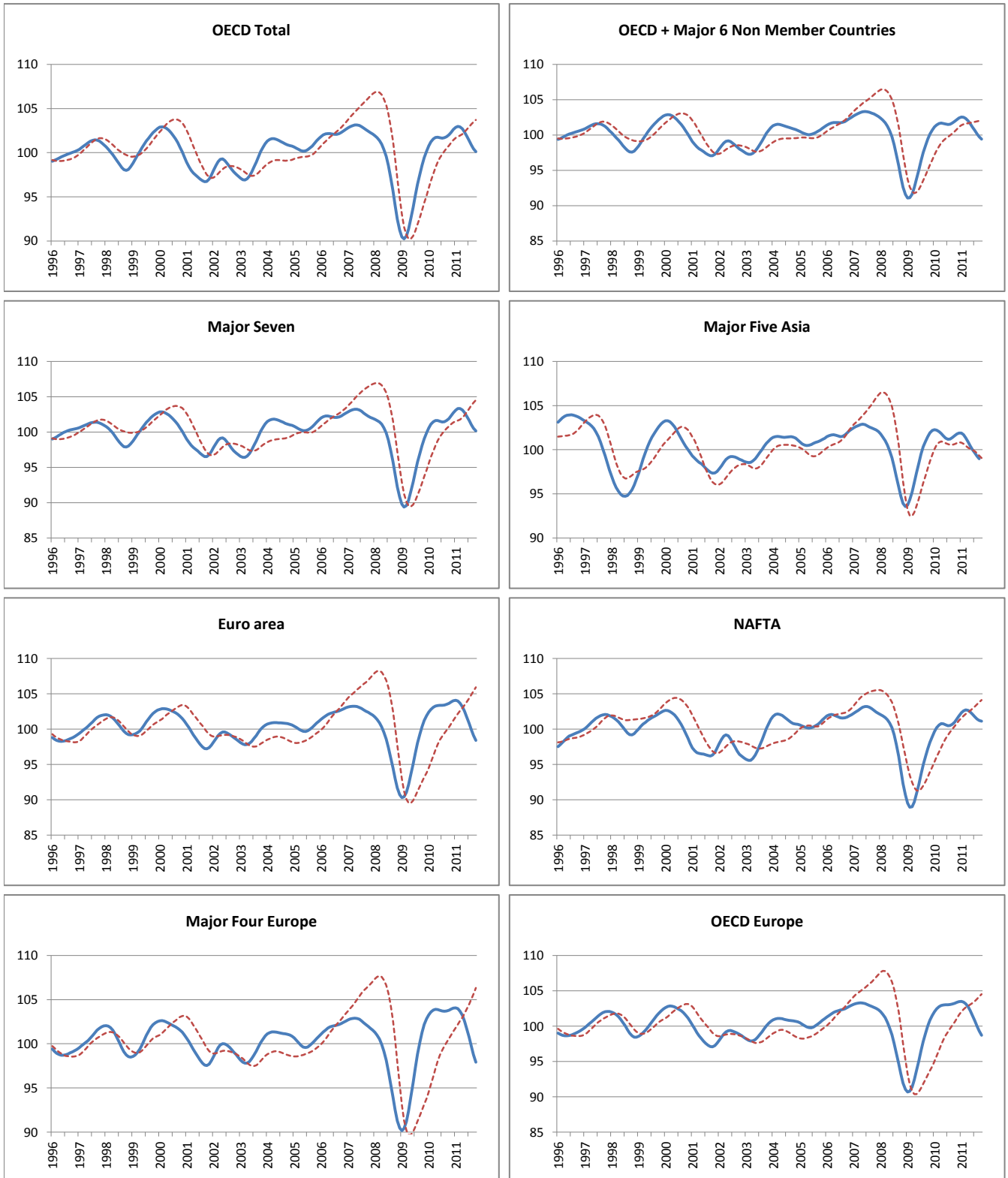


## AREA TOTALS

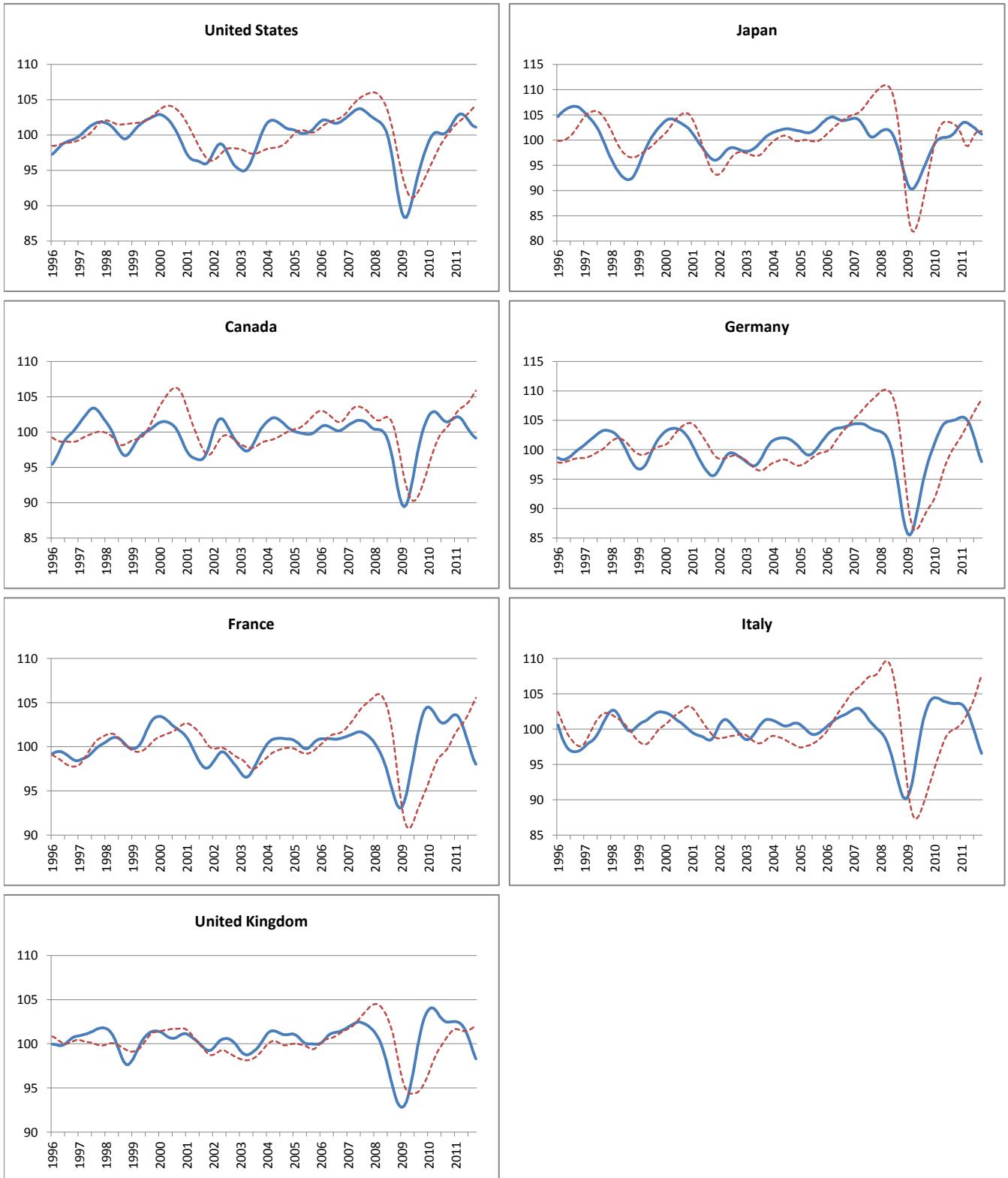
- - - Reference series     
 — Composite leading indicators



	OECD Total	OECD + Major 6 Non Member Countries	Major Seven	Major Five Asia	Euro Area	NAFTA	Major Four Europe	OECD Europe
<b>Amplitude adjusted (long term average =100)</b>								
October 2010	102.02	101.93	101.90	101.58	103.65	100.99	103.79	103.24
November 2010	102.31	102.18	102.30	101.77	103.83	101.41	103.92	103.36
December 2010	102.61	102.41	102.73	101.90	104.00	101.87	104.04	103.48
January 2011	102.86	102.55	103.10	101.90	104.08	102.30	104.08	103.51
February 2011	102.98	102.53	103.32	101.71	103.98	102.59	103.98	103.41
March 2011	102.93	102.35	103.32	101.35	103.68	102.71	103.70	103.16
April 2011	102.70	102.02	103.12	100.89	103.18	102.64	103.21	102.75
May 2011	102.34	101.60	102.75	100.43	102.50	102.42	102.54	102.18
June 2011	101.88	101.12	102.25	100.02	101.70	102.10	101.70	101.50
July 2011	101.37	100.63	101.66	99.63	100.82	101.75	100.74	100.75
August 2011	100.87	100.16	101.07	99.27	99.94	101.42	99.74	100.01
September 2011	100.44	99.77	100.55	98.98	99.13	101.21	98.77	99.32
<b>Month on Month growth rate (%)</b>								
October 2010	0.21	0.22	0.28	0.21	0.15	0.31	0.08	0.10
November 2010	0.28	0.25	0.39	0.19	0.18	0.42	0.12	0.12
December 2010	0.30	0.22	0.42	0.12	0.16	0.46	0.12	0.11
January 2011	0.24	0.13	0.36	0.00	0.07	0.42	0.04	0.03
February 2011	0.12	-0.02	0.21	-0.19	-0.09	0.29	-0.09	-0.09
March 2011	-0.05	-0.18	0.01	-0.35	-0.29	0.11	-0.27	-0.24
April 2011	-0.22	-0.32	-0.19	-0.46	-0.49	-0.07	-0.47	-0.41
May 2011	-0.36	-0.41	-0.36	-0.45	-0.65	-0.21	-0.65	-0.55
June 2011	-0.45	-0.46	-0.49	-0.41	-0.78	-0.31	-0.82	-0.67
July 2011	-0.50	-0.49	-0.57	-0.38	-0.87	-0.35	-0.94	-0.74
August 2011	-0.49	-0.47	-0.59	-0.37	-0.87	-0.32	-1.00	-0.74
September 2011	-0.42	-0.39	-0.51	-0.29	-0.81	-0.20	-0.97	-0.69
<b>Year on Year growth rate (%)</b>								
October 2010	3.51	2.54	3.90	0.09	3.30	3.91	2.46	3.22
November 2010	2.90	2.05	3.28	-0.14	2.59	3.36	1.70	2.48
December 2010	2.45	1.69	2.84	-0.28	2.07	2.97	1.17	1.92
January 2011	2.08	1.39	2.50	-0.38	1.63	2.67	0.77	1.44
February 2011	1.73	1.07	2.18	-0.50	1.15	2.39	0.36	0.95
March 2011	1.35	0.71	1.82	-0.68	0.56	2.10	-0.12	0.41
April 2011	0.95	0.32	1.46	-0.92	-0.10	1.84	-0.67	-0.17
May 2011	0.58	-0.05	1.11	-1.12	-0.81	1.66	-1.28	-0.78
June 2011	0.18	-0.42	0.71	-1.29	-1.60	1.50	-2.02	-1.46
July 2011	-0.28	-0.85	0.22	-1.54	-2.46	1.26	-2.87	-2.20
August 2011	-0.80	-1.37	-0.39	-1.92	-3.35	0.91	-3.80	-2.96
September 2011	-1.34	-1.89	-1.05	-2.35	-4.22	0.53	-4.76	-3.70

## MAJOR SEVEN OECD COUNTRIES

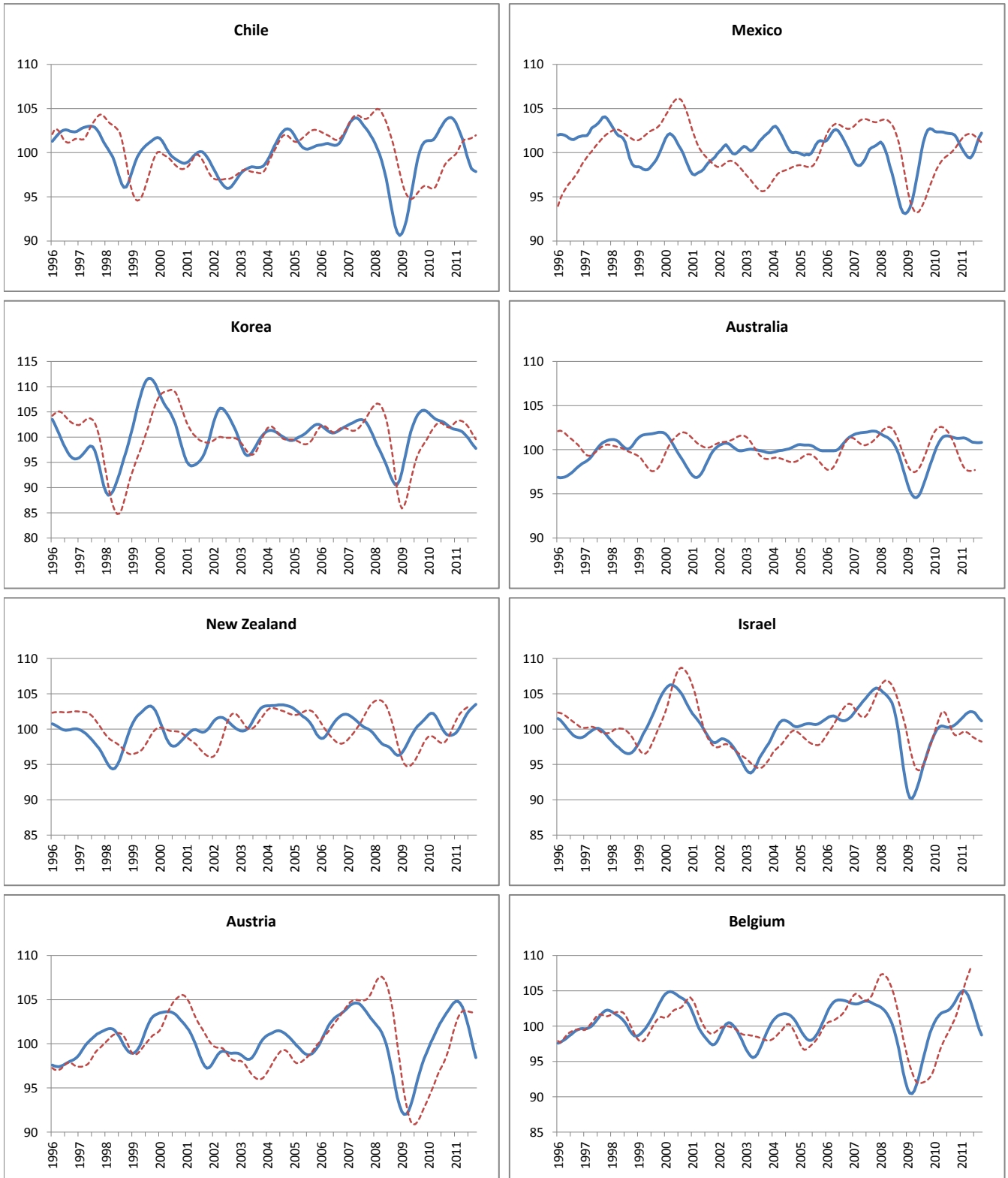
--- Reference series      — Composite leading indicators



	Canada	United States	Japan	France	Germany	Italy	United Kingdom
<b>Amplitude adjusted (long term average =100)</b>							
October 2010	101.49	100.79	101.47	103.09	105.04	103.62	102.45
November 2010	101.68	101.30	102.07	103.36	105.20	103.63	102.48
December 2010	101.92	101.88	102.70	103.58	105.39	103.63	102.51
January 2011	102.12	102.41	103.21	103.64	105.53	103.53	102.51
February 2011	102.17	102.80	103.50	103.49	105.52	103.29	102.46
March 2011	102.02	102.99	103.52	103.08	105.30	102.87	102.33
April 2011	101.69	102.97	103.32	102.47	104.82	102.23	102.08
May 2011	101.22	102.76	103.02	101.75	104.05	101.43	101.70
June 2011	100.72	102.40	102.69	100.97	103.00	100.49	101.17
July 2011	100.23	101.96	102.36	100.15	101.73	99.48	100.51
August 2011	99.78	101.53	101.97	99.34	100.39	98.47	99.77
September 2011	99.42	101.25	101.55	98.60	99.10	97.47	99.01
<b>Month on Month growth rate (%)</b>							
October 2010	0.06	0.37	0.44	0.24	0.10	-0.02	-0.02
November 2010	0.19	0.51	0.59	0.27	0.15	0.01	0.03
December 2010	0.23	0.57	0.61	0.21	0.18	0.00	0.03
January 2011	0.20	0.53	0.51	0.06	0.13	-0.10	0.00
February 2011	0.05	0.38	0.28	-0.15	-0.01	-0.23	-0.05
March 2011	-0.15	0.18	0.02	-0.39	-0.21	-0.41	-0.13
April 2011	-0.33	-0.02	-0.19	-0.59	-0.46	-0.63	-0.24
May 2011	-0.46	-0.20	-0.30	-0.70	-0.74	-0.79	-0.37
June 2011	-0.50	-0.35	-0.32	-0.77	-1.01	-0.92	-0.52
July 2011	-0.48	-0.43	-0.33	-0.81	-1.23	-1.00	-0.65
August 2011	-0.45	-0.42	-0.38	-0.81	-1.32	-1.02	-0.73
September 2011	-0.36	-0.28	-0.41	-0.74	-1.28	-1.01	-0.76
<b>Year on Year growth rate (%)</b>							
October 2010	1.68	4.61	5.32	-0.31	7.50	0.30	0.36
November 2010	0.85	4.06	4.80	-0.71	6.35	-0.30	-0.44
December 2010	0.26	3.67	4.38	-0.84	5.38	-0.66	-0.97
January 2011	-0.18	3.37	4.02	-0.81	4.44	-0.87	-1.32
February 2011	-0.53	3.11	3.66	-0.79	3.42	-1.08	-1.54
March 2011	-0.86	2.83	3.28	-0.88	2.28	-1.38	-1.65
April 2011	-1.14	2.58	2.88	-1.08	1.05	-1.86	-1.69
May 2011	-1.35	2.38	2.51	-1.37	-0.24	-2.44	-1.72
June 2011	-1.48	2.16	2.15	-1.81	-1.56	-3.27	-1.87
July 2011	-1.58	1.82	1.75	-2.45	-2.93	-4.15	-2.20
August 2011	-1.75	1.34	1.21	-3.25	-4.29	-5.04	-2.72
September 2011	-1.99	0.83	0.52	-4.11	-5.57	-5.95	-3.37

## OTHER OECD COUNTRIES

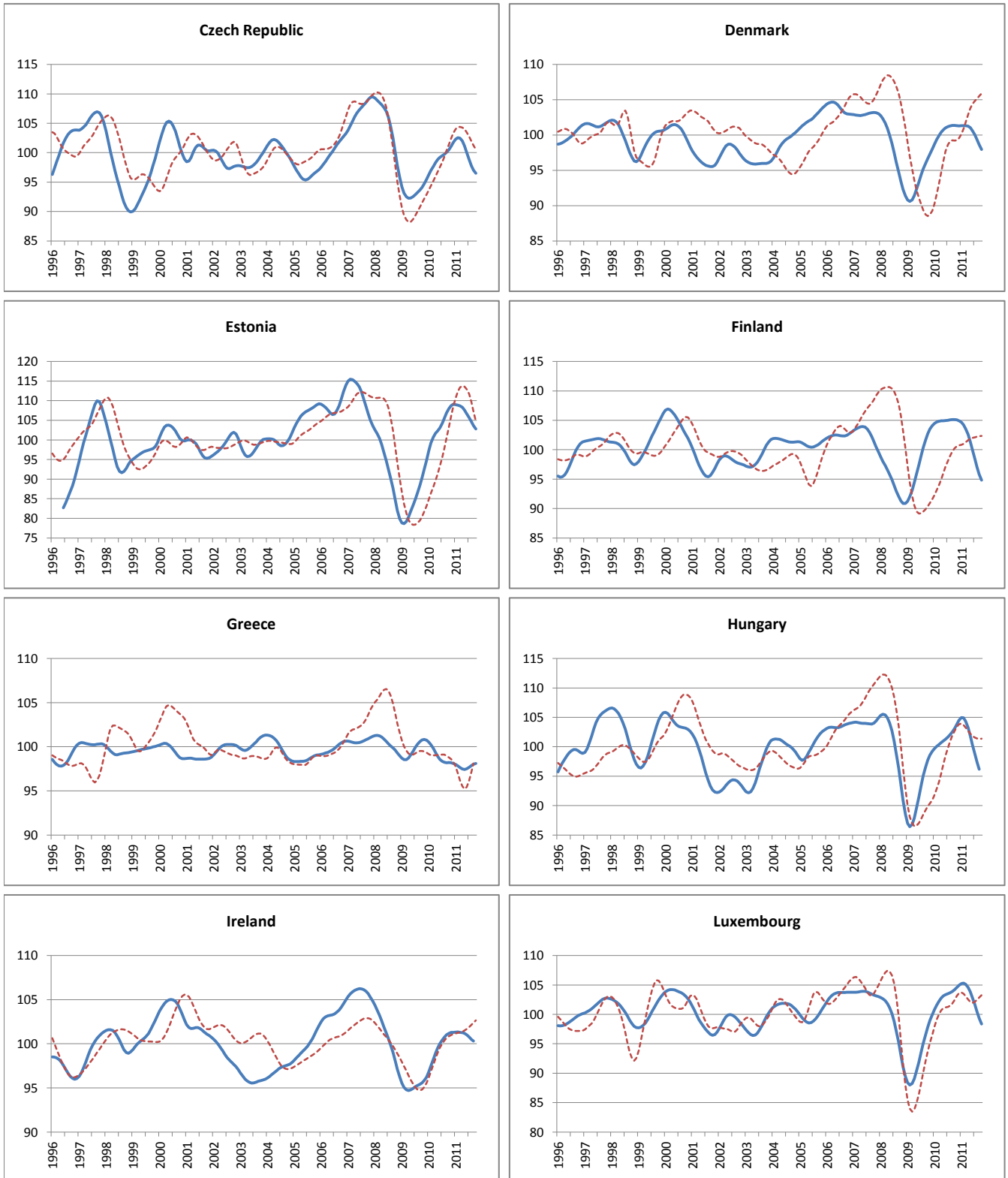
--- Reference series      — Composite leading indicators



	Chile	Mexico	Korea	Australia	New Zealand	Ireland	Austria	Belgium
<b>Amplitude adjusted (long term average =100)</b>								
October 2010	103.95	102.00	102.15	101.34	99.12	100.56	103.88	103.33
November 2010	103.99	101.66	101.83	101.29	99.10	100.82	104.26	103.91
December 2010	103.83	101.13	101.61	101.30	99.20	101.12	104.59	104.49
January 2011	103.44	100.59	101.51	101.33	99.41	101.45	104.80	104.91
February 2011	102.88	100.17	101.43	101.34	99.78	101.78	104.82	105.06
March 2011	102.27	99.78	101.28	101.30	100.32	102.10	104.61	104.86
April 2011	101.57	99.46	101.02	101.17	100.94	102.35	104.16	104.36
May 2011	100.70	99.38	100.63	100.99	101.55	102.48	103.49	103.61
June 2011	99.75	99.67	100.13	100.86	102.10	102.46	102.65	102.66
July 2011	98.90	100.29	99.55	100.82	102.58	102.31	101.65	101.58
August 2011	98.22	101.06	98.91	100.79	102.90	101.90	100.56	100.51
September 2011	97.98	101.74	98.32	100.80	103.20	101.51	99.45	99.55
<b>Month on Month growth rate (%)</b>								
October 2010	0.15	-0.14	-0.35	-0.07	-0.14	0.18	0.37	0.49
November 2010	0.04	-0.34	-0.31	-0.05	-0.02	0.26	0.36	0.56
December 2010	-0.16	-0.52	-0.21	0.01	0.10	0.30	0.32	0.56
January 2011	-0.37	-0.54	-0.10	0.03	0.22	0.33	0.21	0.41
February 2011	-0.54	-0.42	-0.08	0.01	0.37	0.32	0.02	0.14
March 2011	-0.60	-0.39	-0.14	-0.04	0.53	0.31	-0.20	-0.19
April 2011	-0.68	-0.31	-0.26	-0.13	0.62	0.25	-0.43	-0.48
May 2011	-0.86	-0.09	-0.39	-0.17	0.61	0.12	-0.64	-0.72
June 2011	-0.95	0.30	-0.50	-0.14	0.54	-0.02	-0.82	-0.92
July 2011	-0.84	0.62	-0.58	-0.03	0.47	-0.15	-0.97	-1.05
August 2011	-0.69	0.77	-0.63	-0.04	0.32	-0.40	-1.08	-1.06
September 2011	-0.24	0.67	-0.61	0.01	0.28	-0.38	-1.10	-0.96
<b>Year on Year growth rate (%)</b>								
October 2010	3.09	-0.56	-2.96	3.98	-1.87	3.88	6.40	5.53
November 2010	2.78	-1.05	-3.31	3.14	-2.20	3.16	6.01	4.96
December 2010	2.46	-1.48	-3.35	2.38	-2.47	2.59	5.67	4.63
January 2011	2.03	-1.81	-3.11	1.68	-2.59	2.18	5.25	4.34
February 2011	1.48	-2.14	-2.77	1.03	-2.41	1.90	4.65	3.94
March 2011	0.81	-2.51	-2.51	0.44	-1.84	1.81	3.86	3.29
April 2011	-0.20	-2.81	-2.46	-0.07	-0.92	1.92	2.86	2.49
May 2011	-1.46	-2.88	-2.66	-0.47	0.20	2.07	1.68	1.61
June 2011	-2.84	-2.52	-3.02	-0.70	1.39	2.16	0.37	0.59
July 2011	-4.09	-1.87	-3.42	-0.73	2.50	2.06	-1.03	-0.61
August 2011	-5.12	-1.09	-3.81	-0.71	3.35	1.62	-2.48	-1.91
September 2011	-5.60	-0.39	-4.09	-0.61	3.96	1.12	-3.91	-3.19

## OTHER OECD COUNTRIES

--- Reference series      — Composite leading indicators

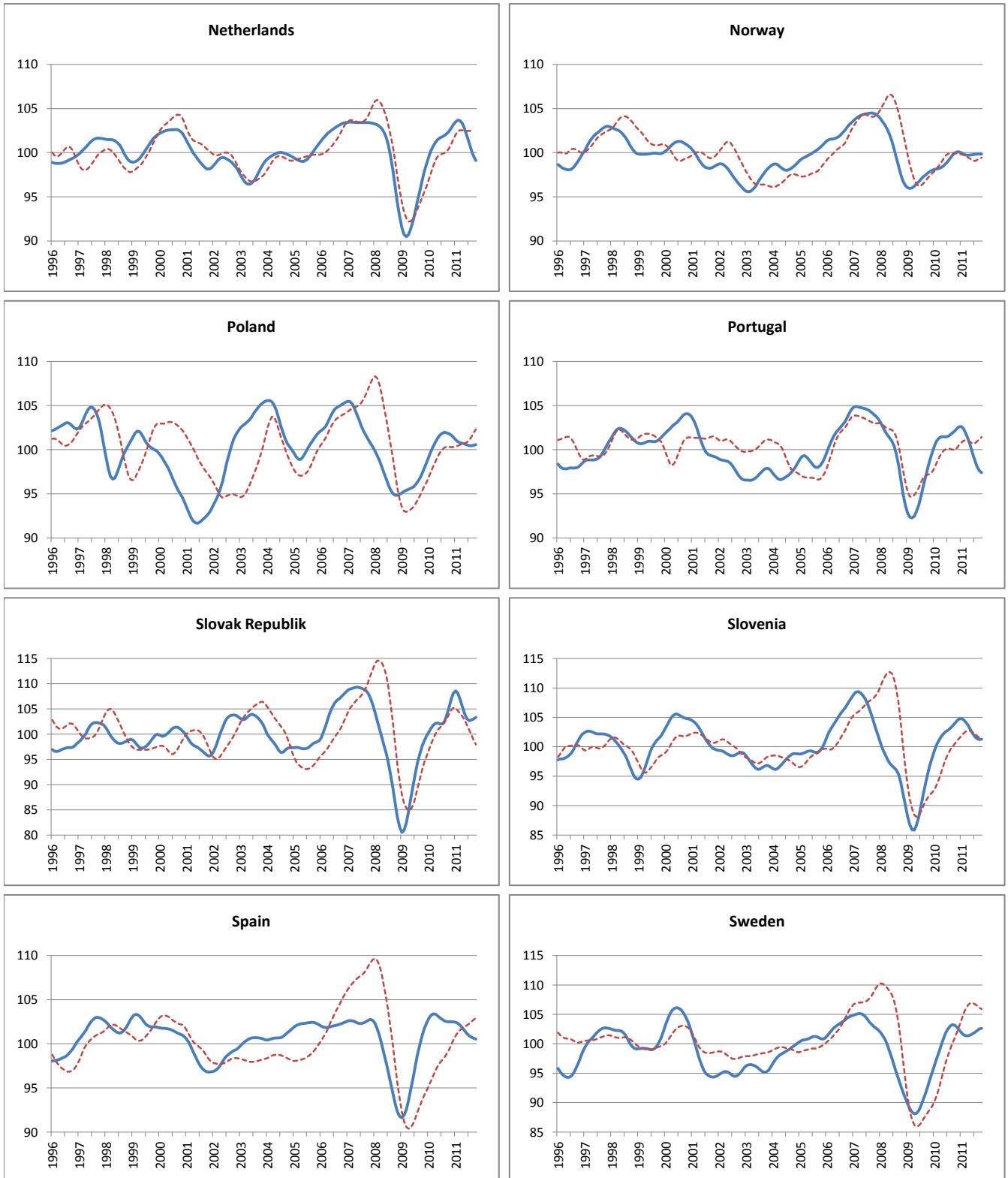


	Czech Republic	Denmark	Estonia	Finland	Greece	Hungary	Ireland	Luxembourg
<b>Amplitude adjusted (long term average =100)</b>								
October 2010	100.49	101.34	108.01	105.12	98.21	103.10	101.19	104.19
November 2010	101.06	101.31	108.71	105.06	98.19	103.82	101.29	104.56
December 2010	101.72	101.30	109.08	104.92	98.11	104.51	101.29	104.94
January 2011	102.28	101.31	109.01	104.66	98.00	104.96	101.31	105.22
February 2011	102.55	101.32	108.83	104.22	97.82	104.91	101.35	105.29
March 2011	102.48	101.33	108.69	103.53	97.64	104.30	101.28	105.08
April 2011	101.99	101.27	108.31	102.57	97.49	103.24	101.25	104.59
May 2011	101.11	101.05	107.59	101.37	97.43	101.85	101.18	103.83
June 2011	100.00	100.62	106.66	99.96	97.50	100.30	101.03	102.83
July 2011	98.83	100.02	105.68	98.47	97.67	98.79	100.78	101.66
August 2011	97.80	99.34	104.67	97.03	97.85	97.39	100.51	100.45
September 2011	97.04	98.63	103.67	95.80	98.03	96.19	100.31	99.32
<b>Month on Month growth rate (%)</b>								
October 2010	0.45	-0.01	1.04	0.00	0.01	0.58	0.18	0.29
November 2010	0.57	-0.03	0.65	-0.05	-0.03	0.70	0.09	0.36
December 2010	0.65	-0.01	0.34	-0.14	-0.08	0.67	0.01	0.36
January 2011	0.55	0.01	-0.07	-0.24	-0.12	0.42	0.02	0.27
February 2011	0.27	0.01	-0.16	-0.42	-0.18	-0.05	0.04	0.07
March 2011	-0.08	0.01	-0.14	-0.66	-0.19	-0.58	-0.07	-0.20
April 2011	-0.48	-0.06	-0.35	-0.92	-0.15	-1.02	-0.03	-0.47
May 2011	-0.86	-0.21	-0.66	-1.18	-0.06	-1.35	-0.07	-0.73
June 2011	-1.09	-0.42	-0.86	-1.39	0.06	-1.52	-0.15	-0.97
July 2011	-1.18	-0.60	-0.93	-1.49	0.17	-1.50	-0.24	-1.14
August 2011	-1.04	-0.68	-0.95	-1.46	0.19	-1.42	-0.27	-1.19
September 2011	-0.77	-0.71	-0.96	-1.27	0.18	-1.24	-0.20	-1.12
<b>Year on Year growth rate (%)</b>								
October 2010	6.79	4.84	19.52	2.33	-2.55	5.51	5.87	6.51
November 2010	6.72	4.10	17.56	1.49	-2.63	5.32	5.68	5.65
December 2010	6.56	3.35	15.07	0.79	-2.62	5.33	5.25	5.00
January 2011	6.27	2.63	12.15	0.19	-2.53	5.29	4.64	4.39
February 2011	5.75	1.97	9.66	-0.46	-2.39	4.86	3.94	3.68
March 2011	4.93	1.39	7.93	-1.26	-2.20	3.90	3.10	2.78
April 2011	3.76	0.86	6.52	-2.23	-1.89	2.53	2.37	1.76
May 2011	2.33	0.29	5.17	-3.39	-1.50	0.85	1.68	0.68
June 2011	0.80	-0.38	3.51	-4.74	-1.08	-0.98	1.02	-0.50
July 2011	-0.67	-1.16	1.41	-6.21	-0.69	-2.80	0.37	-1.79
August 2011	-1.94	-1.93	-0.82	-7.64	-0.39	-4.57	-0.23	-3.11
September 2011	-3.00	-2.68	-3.03	-8.86	-0.17	-6.17	-0.69	-4.39



## OTHER OECD COUNTRIES

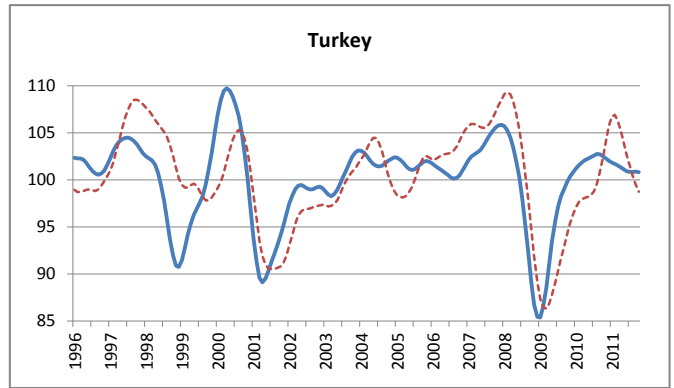
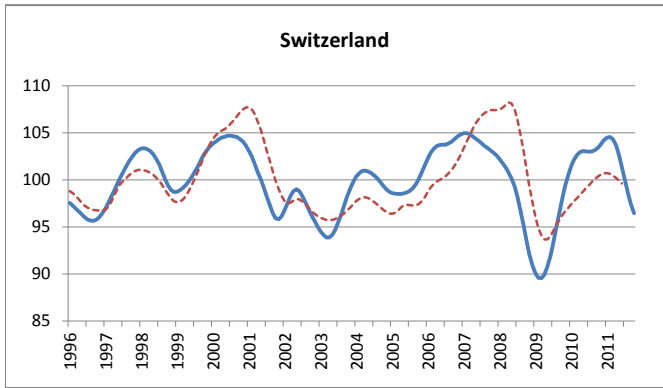
--- Reference series      — Composite leading indicators



	Netherlands	Norway	Poland	Portugal	Slovak Republic	Slovenia	Spain	Sweden
<b>Amplitude adjusted (long term average =100)</b>								
October 2010	102.41	99.95	101.82	102.12	105.24	103.93	102.49	103.18
November 2010	102.77	100.09	101.66	102.38	106.87	104.38	102.49	102.85
December 2010	103.17	100.08	101.43	102.61	108.09	104.71	102.49	102.37
January 2011	103.50	99.98	101.13	102.63	108.59	104.80	102.43	101.90
February 2011	103.68	99.85	100.91	102.38	108.11	104.60	102.32	101.52
March 2011	103.64	99.74	100.79	101.86	106.94	104.19	102.10	101.34
April 2011	103.31	99.71	100.71	101.21	105.42	103.63	101.80	101.36
May 2011	102.73	99.73	100.65	100.48	104.08	102.96	101.47	101.50
June 2011	101.96	99.77	100.56	99.63	103.11	102.30	101.17	101.70
July 2011	101.12	99.81	100.48	98.80	102.64	101.75	100.91	101.94
August 2011	100.31	99.85	100.45	98.11	102.78	101.38	100.76	102.23
September 2011	99.64	99.85	100.51	97.63	103.01	101.25	100.65	102.49
<b>Month on Month growth rate (%)</b>								
October 2010	0.27	0.26	-0.10	0.24	1.52	0.42	-0.03	-0.07
November 2010	0.35	0.14	-0.16	0.25	1.55	0.43	0.00	-0.32
December 2010	0.39	-0.01	-0.23	0.22	1.14	0.32	0.00	-0.46
January 2011	0.32	-0.10	-0.29	0.02	0.46	0.08	-0.05	-0.46
February 2011	0.17	-0.13	-0.22	-0.24	-0.44	-0.19	-0.12	-0.37
March 2011	-0.04	-0.11	-0.12	-0.51	-1.08	-0.39	-0.22	-0.17
April 2011	-0.31	-0.04	-0.08	-0.64	-1.41	-0.54	-0.29	0.02
May 2011	-0.57	0.03	-0.06	-0.72	-1.27	-0.65	-0.33	0.14
June 2011	-0.75	0.04	-0.09	-0.85	-0.93	-0.63	-0.29	0.20
July 2011	-0.83	0.04	-0.09	-0.83	-0.46	-0.54	-0.26	0.23
August 2011	-0.80	0.03	-0.02	-0.69	0.14	-0.36	-0.15	0.29
September 2011	-0.67	0.00	0.05	-0.50	0.22	-0.12	-0.11	0.25
<b>Year on Year growth rate (%)</b>								
October 2010	5.80	2.32	4.67	4.28	7.88	8.90	1.61	11.24
November 2010	5.04	2.27	3.85	3.59	8.29	7.69	0.77	9.45
December 2010	4.45	2.11	2.94	2.91	8.47	6.59	0.13	7.55
January 2011	3.96	1.92	1.95	2.17	8.17	5.46	-0.41	5.77
February 2011	3.45	1.73	1.08	1.39	6.90	4.26	-0.87	4.13
March 2011	2.85	1.56	0.39	0.55	5.02	3.05	-1.26	2.74
April 2011	2.10	1.42	-0.18	-0.25	3.20	1.88	-1.52	1.62
May 2011	1.22	1.28	-0.65	-0.98	1.85	0.76	-1.66	0.65
June 2011	0.29	1.07	-1.06	-1.81	1.05	-0.22	-1.72	-0.09
July 2011	-0.67	0.79	-1.37	-2.67	0.63	-1.03	-1.79	-0.57
August 2011	-1.59	0.48	-1.48	-3.49	0.28	-1.68	-1.80	-0.76
September 2011	-2.44	0.15	-1.39	-4.17	-0.63	-2.17	-1.82	-0.74

## OTHER OECD COUNTRIES

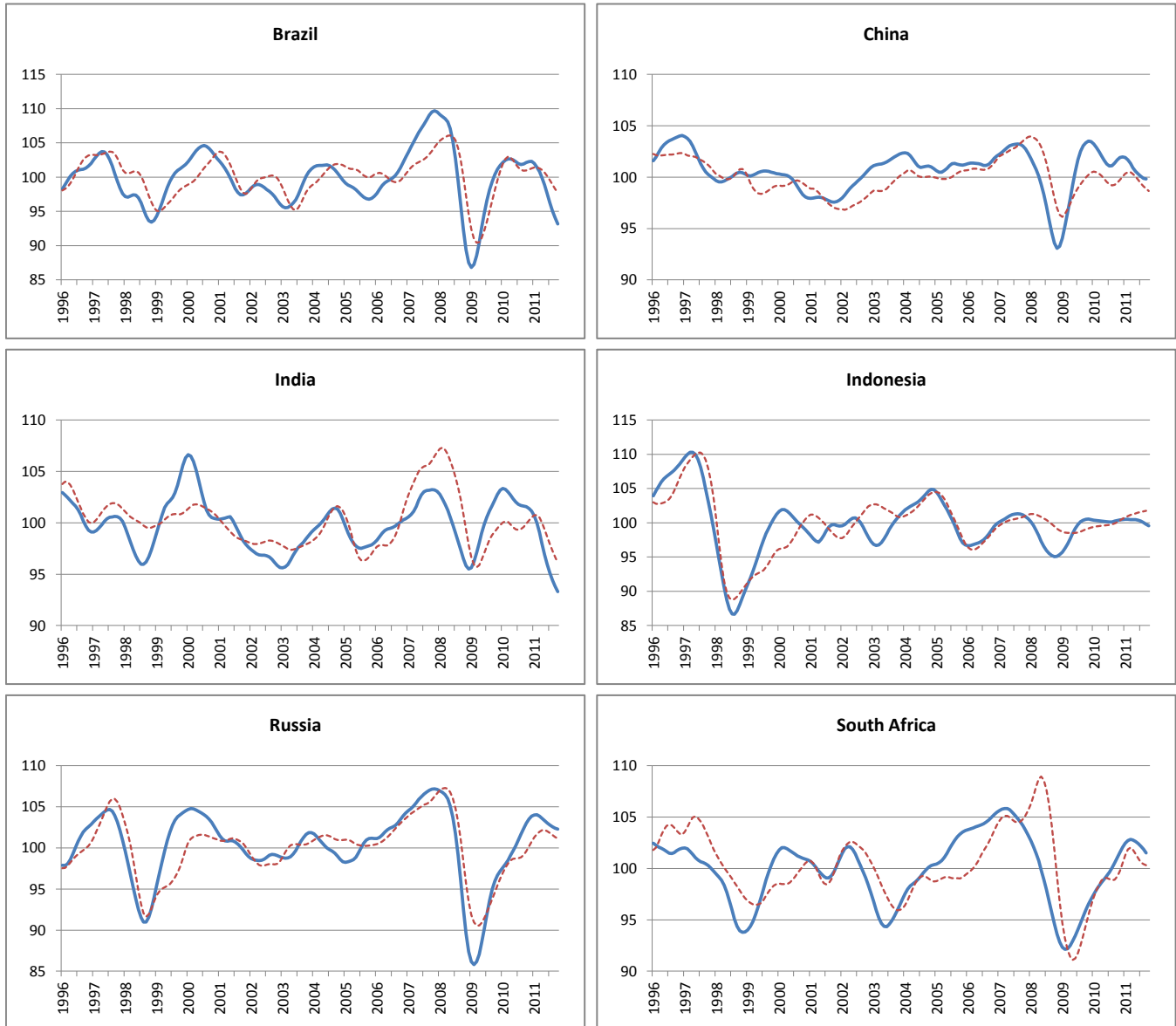
----- Reference series      — Composite leading indicators



	Switzerland	Turkey
<b>Amplitude adjusted (long term average =100)</b>		
October 2010	103.43	102.53
November 2010	103.81	102.26
December 2010	104.22	102.02
January 2011	104.49	101.84
February 2011	104.55	101.68
March 2011	104.31	101.54
April 2011	103.68	101.33
May 2011	102.66	101.11
June 2011	101.37	100.92
July 2011	99.94	100.86
August 2011	98.61	100.85
September 2011	97.44	100.89
<b>Month on Month growth rate (%)</b>		
October 2010	0.26	-0.19
November 2010	0.37	-0.26
December 2010	0.40	-0.23
January 2011	0.26	-0.18
February 2011	0.06	-0.16
March 2011	-0.23	-0.14
April 2011	-0.60	-0.20
May 2011	-0.98	-0.22
June 2011	-1.26	-0.18
July 2011	-1.41	-0.07
August 2011	-1.33	0.00
September 2011	-1.18	0.03
<b>Year on Year growth rate (%)</b>		
October 2010	5.50	2.78
November 2010	4.44	1.92
December 2010	3.65	1.20
January 2011	2.97	0.60
February 2011	2.31	0.10
March 2011	1.59	-0.33
April 2011	0.70	-0.74
May 2011	-0.39	-1.11
June 2011	-1.62	-1.45
July 2011	-2.96	-1.70
August 2011	-4.27	-1.84
September 2011	-5.54	-1.78

## MAJOR NON MEMBER COUNTRIES

----- Reference series      — Composite leading indicators



	Brasil	China	India	Indonnesia	Russia	South Africa
<b>Amplitude adjusted (long term average =100)</b>						
October 2010	102.14	101.67	101.56	100.34	102.98	101.04
November 2010	102.28	101.90	101.39	100.42	103.50	101.56
December 2010	102.30	101.98	101.14	100.47	103.86	102.04
January 2011	102.01	101.91	100.69	100.49	104.01	102.45
February 2011	101.46	101.67	100.00	100.49	104.03	102.72
March 2011	100.79	101.32	99.05	100.47	103.86	102.82
April 2011	99.95	100.90	97.98	100.46	103.60	102.77
May 2011	98.88	100.57	96.90	100.44	103.31	102.62
June 2011	97.60	100.30	95.95	100.38	103.04	102.41
July 2011	96.28	100.07	95.13	100.24	102.77	102.15
August 2011	95.07	99.88	94.42	100.02	102.55	101.89
September 2011	94.05	99.82	93.81	99.79	102.39	101.51
<b>Month on Month growth rate (%)</b>						
October 2010	0.23	0.31	-0.07	0.11	0.61	0.51
November 2010	0.14	0.22	-0.16	0.08	0.51	0.51
December 2010	0.01	0.08	-0.24	0.05	0.35	0.48
January 2011	-0.28	-0.06	-0.45	0.02	0.14	0.40
February 2011	-0.54	-0.23	-0.69	0.00	0.02	0.26
March 2011	-0.66	-0.34	-0.94	-0.02	-0.16	0.10
April 2011	-0.84	-0.42	-1.08	-0.01	-0.26	-0.05
May 2011	-1.07	-0.33	-1.10	-0.02	-0.28	-0.14
June 2011	-1.29	-0.26	-0.98	-0.06	-0.26	-0.21
July 2011	-1.36	-0.23	-0.85	-0.14	-0.26	-0.25
August 2011	-1.25	-0.20	-0.75	-0.22	-0.21	-0.25
September 2011	-1.08	-0.06	-0.64	-0.23	-0.16	-0.37
<b>Year on Year growth rate (%)</b>						
October 2010	1.76	-1.62	-0.65	-0.17	7.32	5.29
November 2010	1.13	-1.55	-1.34	-0.10	7.08	5.22
December 2010	0.58	-1.42	-1.97	0.00	6.89	5.18
January 2011	-0.14	-1.26	-2.56	0.10	6.57	5.10
February 2011	-1.00	-1.16	-3.16	0.17	6.13	4.90
March 2011	-1.80	-1.13	-3.84	0.20	5.44	4.60
April 2011	-2.64	-1.14	-4.59	0.22	4.57	4.20
May 2011	-3.56	-1.07	-5.30	0.24	3.67	3.71
June 2011	-4.55	-0.96	-5.94	0.23	2.77	3.16
July 2011	-5.59	-0.98	-6.54	0.12	1.81	2.53
August 2011	-6.64	-1.22	-7.14	-0.12	0.87	1.84
September 2011	-7.71	-1.52	-7.69	-0.43	0.03	0.98