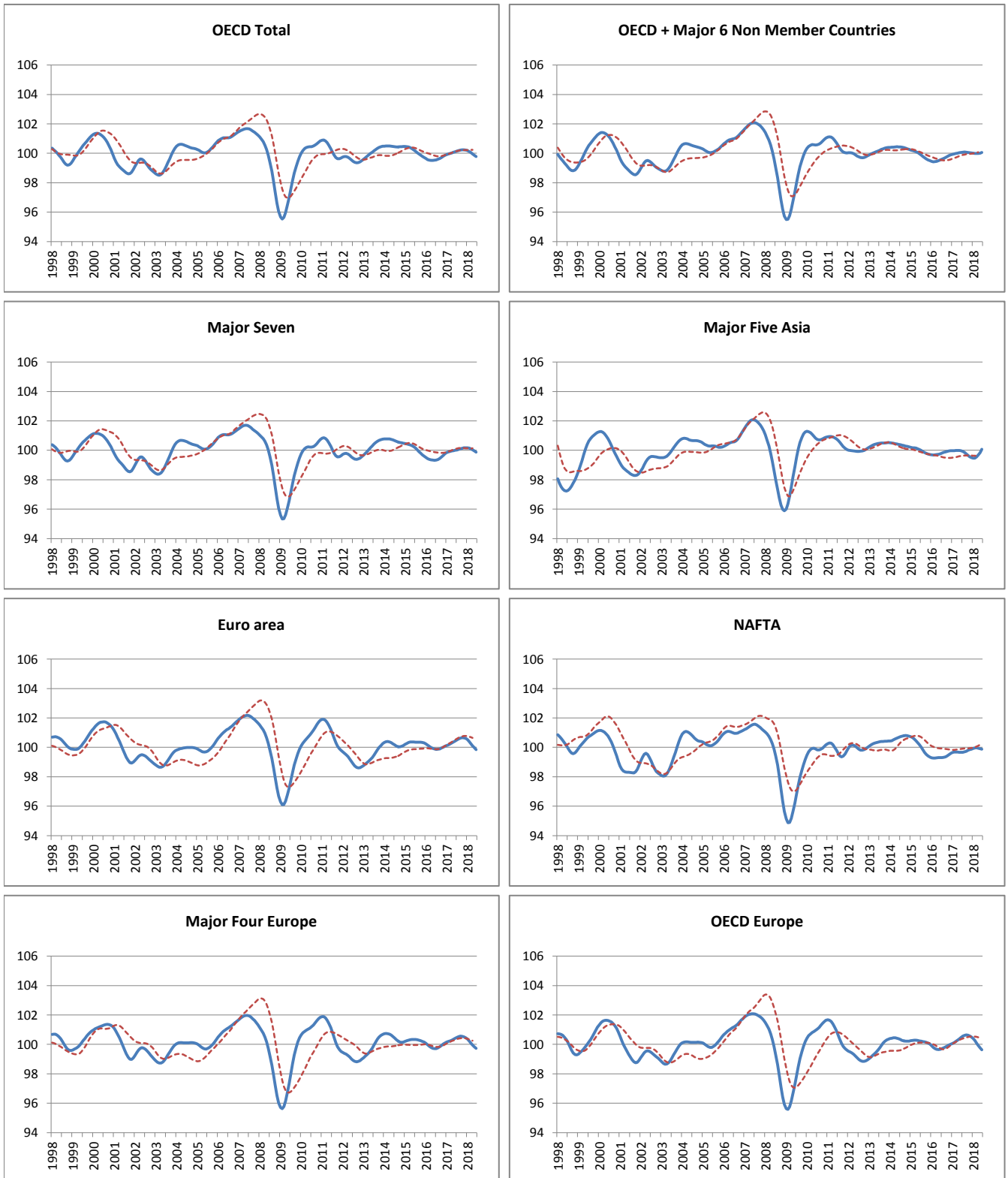


## AREA TOTALS

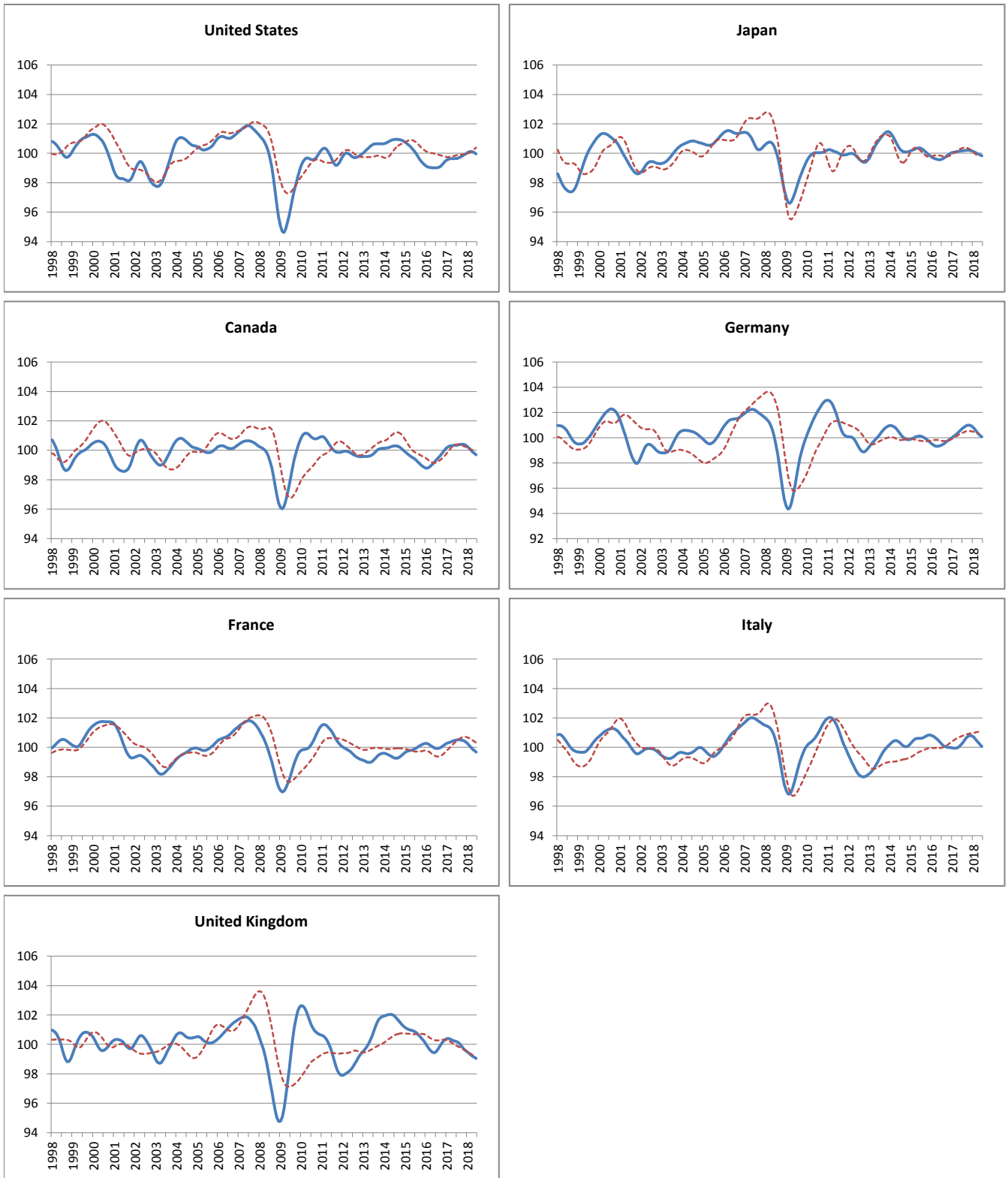
----- Reference series      — Composite leading indicators



	OECD Total	OECD + Major 6 Non Member Countries	Major Seven	Major Five Asia	Euro Area	NAFTA	Major Four Europe	OECD Europe
<b>Amplitude adjusted (long term average =100)</b>								
July 2017	100.15	100.07	100.03	99.93	100.51	99.66	100.48	100.56
August 2017	100.18	100.08	100.06	99.86	100.58	99.69	100.53	100.62
September 2017	100.21	100.07	100.10	99.76	100.63	99.73	100.56	100.64
October 2017	100.23	100.06	100.14	99.66	100.65	99.79	100.55	100.62
November 2017	100.23	100.04	100.16	99.57	100.65	99.84	100.52	100.58
December 2017	100.21	100.02	100.17	99.50	100.61	99.88	100.45	100.50
January 2018	100.18	100.00	100.17	99.46	100.52	99.92	100.36	100.40
February 2018	100.13	99.99	100.15	99.47	100.40	99.95	100.23	100.26
March 2018	100.05	99.99	100.10	99.55	100.26	99.96	100.09	100.09
April 2018	99.96	99.99	100.03	99.67	100.11	99.94	99.95	99.92
May 2018	99.86	100.01	99.95	99.84	99.98	99.91	99.83	99.77
June 2018	99.78	100.06	99.87	100.07	99.85	99.87	99.73	99.64
<b>Month on Month growth rate (%)</b>								
July 2017	0.04	0.02	0.03	-0.04	0.07	0.00	0.07	0.09
August 2017	0.04	0.01	0.04	-0.07	0.06	0.03	0.05	0.06
September 2017	0.03	-0.01	0.04	-0.10	0.05	0.04	0.03	0.02
October 2017	0.02	-0.01	0.03	-0.10	0.03	0.05	0.00	-0.02
November 2017	0.00	-0.02	0.02	-0.09	0.00	0.05	-0.03	-0.05
December 2017	-0.02	-0.02	0.01	-0.07	-0.04	0.04	-0.06	-0.07
January 2018	-0.03	-0.02	0.00	-0.04	-0.09	0.04	-0.10	-0.10
February 2018	-0.05	-0.01	-0.02	0.01	-0.12	0.03	-0.13	-0.14
March 2018	-0.08	0.00	-0.05	0.08	-0.14	0.01	-0.14	-0.17
April 2018	-0.09	0.00	-0.07	0.12	-0.15	-0.02	-0.14	-0.17
May 2018	-0.09	0.02	-0.08	0.17	-0.14	-0.03	-0.12	-0.16
June 2018	-0.09	0.05	-0.08	0.23	-0.13	-0.04	-0.10	-0.13
<b>Year on Year growth rate (%)</b>								
July 2017	0.60	0.48	0.70	0.12	0.65	0.35	0.77	0.85
August 2017	0.59	0.43	0.70	0.01	0.71	0.37	0.77	0.86
September 2017	0.57	0.36	0.66	-0.13	0.73	0.37	0.72	0.82
October 2017	0.51	0.28	0.60	-0.27	0.70	0.36	0.62	0.74
November 2017	0.44	0.20	0.51	-0.39	0.64	0.33	0.50	0.62
December 2017	0.36	0.13	0.42	-0.47	0.54	0.29	0.36	0.49
January 2018	0.27	0.08	0.33	-0.51	0.40	0.28	0.20	0.34
February 2018	0.18	0.03	0.25	-0.50	0.22	0.28	0.03	0.14
March 2018	0.06	0.01	0.17	-0.43	0.03	0.29	-0.15	-0.10
April 2018	-0.07	-0.02	0.08	-0.31	-0.18	0.27	-0.33	-0.36
May 2018	-0.20	-0.02	-0.02	-0.15	-0.39	0.24	-0.51	-0.60
June 2018	-0.33	0.00	-0.13	0.10	-0.58	0.21	-0.67	-0.83

## MAJOR SEVEN OECD COUNTRIES

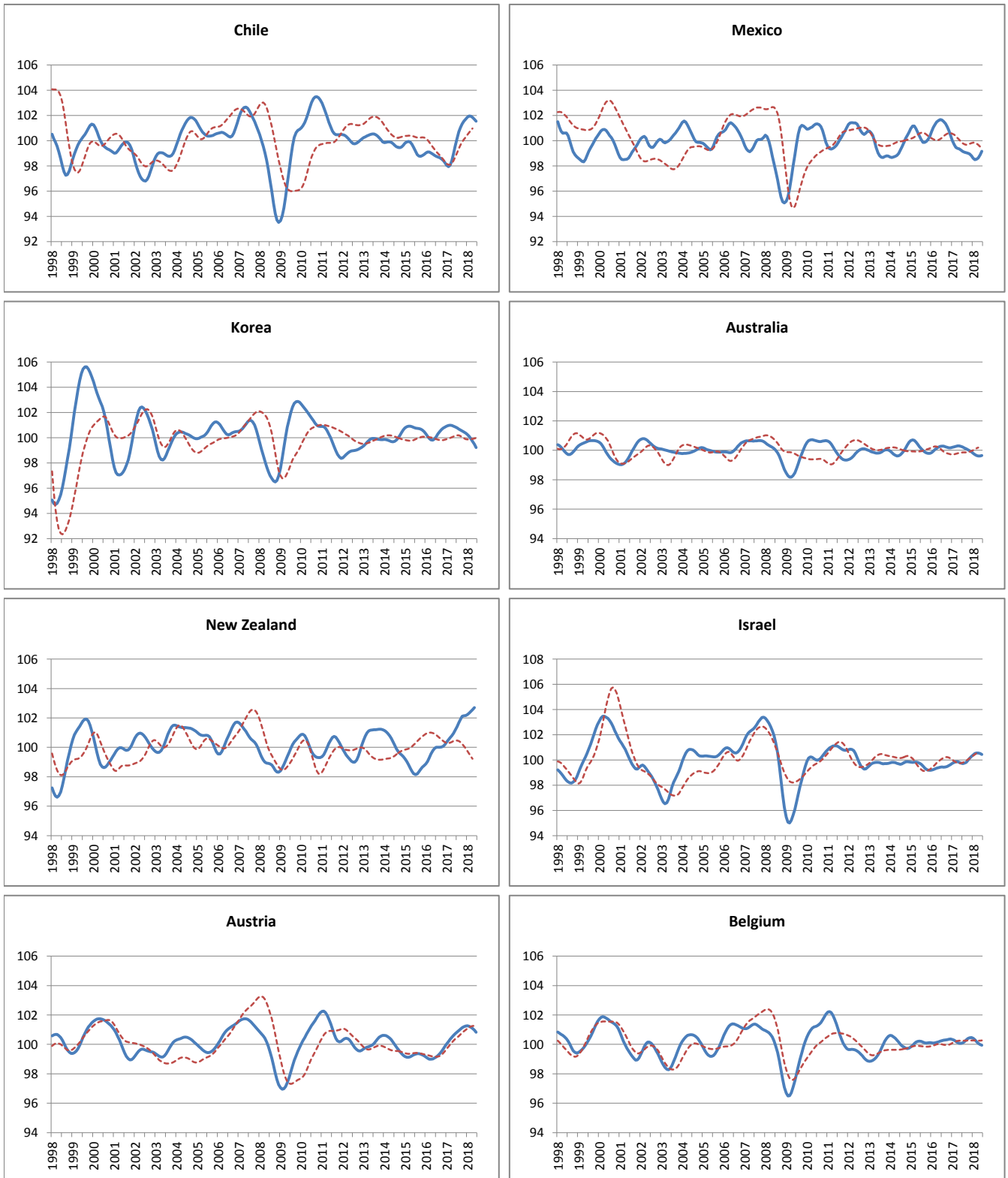
----- Reference series      — Composite leading indicators



	Canada	United States	Japan	France	Germany	Italy	United Kingdom
<b>Amplitude adjusted (long term average =100)</b>							
July 2017	100.36	99.65	100.18	100.51	100.75	100.31	100.17
August 2017	100.38	99.69	100.19	100.52	100.86	100.48	100.10
September 2017	100.40	99.74	100.20	100.51	100.94	100.64	99.98
October 2017	100.41	99.81	100.21	100.48	100.99	100.75	99.83
November 2017	100.40	99.88	100.21	100.44	101.00	100.80	99.67
December 2017	100.35	99.96	100.18	100.37	100.94	100.80	99.56
January 2018	100.26	100.04	100.12	100.27	100.83	100.72	99.48
February 2018	100.14	100.11	100.07	100.14	100.67	100.60	99.39
March 2018	100.01	100.13	100.00	100.01	100.49	100.47	99.29
April 2018	99.90	100.10	99.95	99.88	100.32	100.33	99.19
May 2018	99.80	100.04	99.90	99.77	100.17	100.19	99.12
June 2018	99.70	99.96	99.82	99.68	100.07	100.06	99.04
<b>Month on Month growth rate (%)</b>							
July 2017	0.01	0.01	0.02	0.02	0.13	0.15	-0.04
August 2017	0.02	0.04	0.01	0.01	0.11	0.17	-0.07
September 2017	0.02	0.06	0.01	-0.01	0.08	0.16	-0.12
October 2017	0.01	0.07	0.01	-0.03	0.05	0.11	-0.15
November 2017	-0.01	0.07	0.00	-0.04	0.00	0.05	-0.15
December 2017	-0.05	0.08	-0.03	-0.07	-0.05	-0.01	-0.11
January 2018	-0.09	0.08	-0.05	-0.10	-0.11	-0.08	-0.08
February 2018	-0.12	0.07	-0.06	-0.13	-0.16	-0.12	-0.09
March 2018	-0.12	0.02	-0.06	-0.14	-0.18	-0.14	-0.11
April 2018	-0.12	-0.03	-0.05	-0.13	-0.17	-0.14	-0.10
May 2018	-0.10	-0.06	-0.05	-0.11	-0.14	-0.13	-0.07
June 2018	-0.09	-0.08	-0.07	-0.10	-0.11	-0.13	-0.08
<b>Year on Year growth rate (%)</b>							
July 2017	1.02	0.65	0.58	0.59	1.33	0.11	0.68
August 2017	0.91	0.67	0.53	0.59	1.36	0.37	0.45
September 2017	0.80	0.67	0.46	0.54	1.33	0.60	0.11
October 2017	0.66	0.65	0.37	0.45	1.27	0.74	-0.23
November 2017	0.50	0.59	0.28	0.33	1.17	0.81	-0.53
December 2017	0.31	0.53	0.17	0.18	1.01	0.81	-0.76
January 2018	0.09	0.50	0.07	0.01	0.80	0.76	-0.89
February 2018	-0.11	0.50	0.00	-0.17	0.54	0.66	-1.00
March 2018	-0.28	0.49	-0.09	-0.35	0.24	0.53	-1.07
April 2018	-0.42	0.46	-0.17	-0.52	-0.05	0.36	-1.11
May 2018	-0.54	0.40	-0.24	-0.67	-0.32	0.14	-1.13
June 2018	-0.64	0.32	-0.34	-0.80	-0.55	-0.11	-1.17

## OTHER OECD COUNTRIES

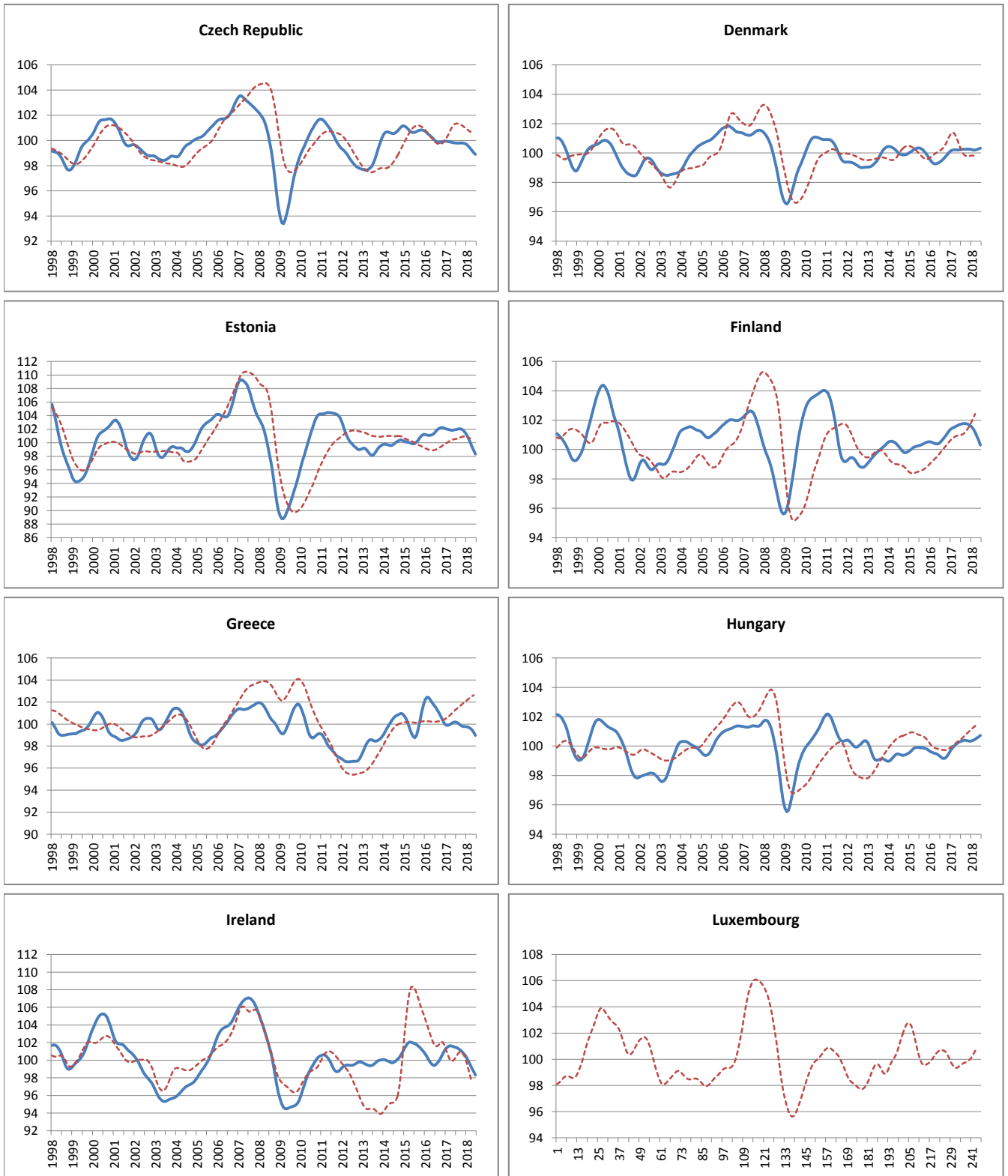
----- Reference series      — Composite leading indicators



	Chile	Mexico	Korea	Australia	New Zealand	Israel	Austria	Belgium
<b>Amplitude adjusted (long term average =100)</b>								
July 2017	100.19	99.14	100.77	100.21	101.42	99.71	100.83	100.10
August 2017	100.69	99.08	100.68	100.15	101.67	99.74	100.93	100.18
September 2017	101.05	99.04	100.60	100.10	101.90	99.81	101.03	100.29
October 2017	101.33	99.01	100.54	100.04	102.11	99.96	101.13	100.39
November 2017	101.53	98.94	100.46	99.98	102.14	100.13	101.21	100.45
December 2017	101.71	98.79	100.37	99.89	102.16	100.28	101.25	100.46
January 2018	101.87	98.60	100.25	99.80	102.22	100.40	101.26	100.41
February 2018	101.96	98.50	100.11	99.71	102.32	100.50	101.23	100.31
March 2018	101.94	98.52	99.93	99.65	102.43	100.55	101.17	100.18
April 2018	101.84	98.63	99.72	99.61	102.56	100.54	101.08	100.06
May 2018	101.69	98.86	99.49	99.61	102.70	100.50	100.96	99.99
June 2018	101.53	99.16	99.22	99.64		100.44	100.83	99.94
<b>Month on Month growth rate (%)</b>								
July 2017	0.60	-0.11	-0.08	-0.06	0.25	-0.04	0.11	0.04
August 2017	0.51	-0.06	-0.09	-0.06	0.25	0.03	0.10	0.08
September 2017	0.36	-0.05	-0.08	-0.05	0.23	0.07	0.10	0.11
October 2017	0.27	-0.03	-0.07	-0.05	0.21	0.15	0.10	0.10
November 2017	0.20	-0.07	-0.07	-0.07	0.03	0.17	0.08	0.06
December 2017	0.17	-0.15	-0.10	-0.09	0.02	0.15	0.05	0.01
January 2018	0.16	-0.19	-0.12	-0.09	0.06	0.13	0.01	-0.05
February 2018	0.08	-0.11	-0.14	-0.09	0.10	0.10	-0.03	-0.10
March 2018	-0.02	0.03	-0.18	-0.06	0.11	0.05	-0.06	-0.13
April 2018	-0.09	0.11	-0.21	-0.04	0.12	-0.01	-0.09	-0.11
May 2018	-0.14	0.24	-0.24	0.00	0.14	-0.04	-0.11	-0.07
June 2018	-0.16	0.30	-0.27	0.03		-0.06	-0.13	-0.05
<b>Year on Year growth rate (%)</b>								
July 2017	1.45	-2.46	0.70	-0.07	1.42	0.28	1.71	-0.15
August 2017	2.02	-2.41	0.39	-0.12	1.66	0.31	1.70	-0.09
September 2017	2.44	-2.27	0.10	-0.14	1.90	0.38	1.68	-0.01
October 2017	2.81	-2.07	-0.12	-0.15	2.09	0.49	1.62	0.07
November 2017	3.15	-1.85	-0.30	-0.20	2.07	0.58	1.53	0.11
December 2017	3.52	-1.62	-0.48	-0.28	1.97	0.64	1.40	0.10
January 2018	3.89	-1.42	-0.66	-0.40	1.86	0.68	1.23	0.08
February 2018	4.10	-1.19	-0.84	-0.53	1.79	0.70	1.04	0.03
March 2018	3.97	-0.95	-1.04	-0.62	1.77	0.70	0.82	-0.02
April 2018	3.47	-0.77	-1.24	-0.69	1.76	0.69	0.59	-0.06
May 2018	2.75	-0.49	-1.42	-0.69	1.73	0.70	0.35	-0.08
June 2018	1.96	-0.09	-1.62	-0.63		0.69	0.10	-0.13

## OTHER OECD COUNTRIES

----- Reference series      — Composite leading indicators

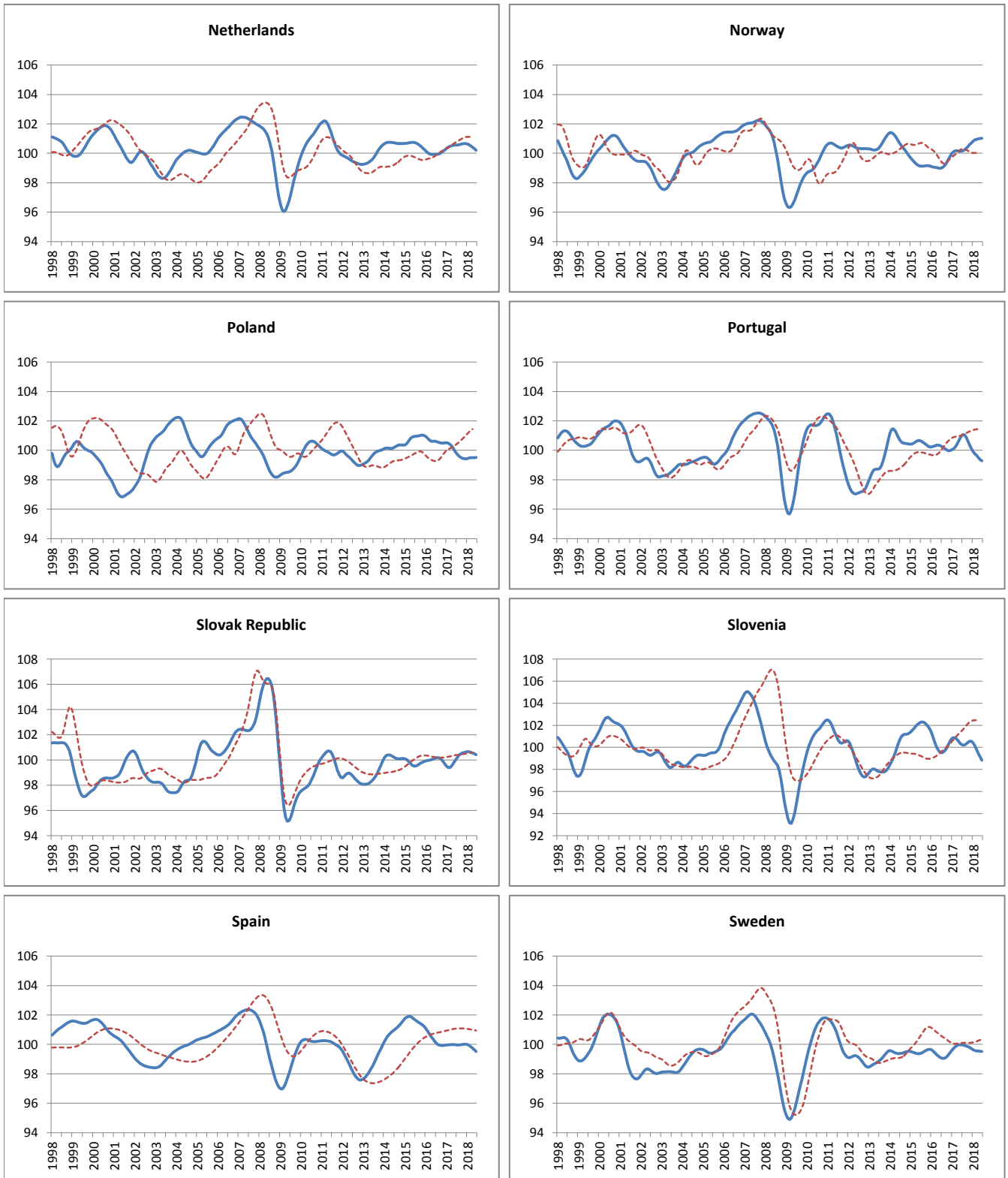


	Czech Republic	Denmark	Estonia	Finland	Greece	Hungary	Ireland	Luxembourg
<b>Amplitude adjusted (long term average =100)</b>								
July 2017	99.79	100.24	101.94	101.75	100.16	100.33	101.43	n.a
August 2017	99.79	100.25	102.01	101.77	100.07	100.38	101.33	n.a
September 2017	99.80	100.25	102.07	101.78	99.94	100.40	101.20	n.a
October 2017	99.80	100.26	102.02	101.76	99.83	100.38	101.02	n.a
November 2017	99.79	100.26	101.85	101.72	99.78	100.34	100.81	n.a
December 2017	99.75	100.25	101.53	101.65	99.77	100.33	100.57	n.a
January 2018	99.67	100.23	101.13	101.54	99.76	100.35	100.26	n.a
February 2018	99.55	100.20	100.69	101.39	99.72	100.40	99.90	n.a
March 2018	99.39	100.20	100.11	101.18	99.62	100.46	99.49	n.a
April 2018	99.21	100.23	99.49	100.92	99.49	100.55	99.09	n.a
May 2018	99.02	100.28	98.87	100.63	99.24	100.63	98.72	n.a
June 2018	98.88	100.33	98.33	100.30	98.97	100.72	98.30	n.a
<b>Month on Month growth rate (%)</b>								
July 2017	-0.02	0.02	0.03	0.04	-0.01	0.05	-0.07	-
August 2017	0.00	0.00	0.07	0.02	-0.10	0.04	-0.09	-
September 2017	0.00	0.01	0.06	0.01	-0.12	0.02	-0.13	-
October 2017	0.00	0.01	-0.05	-0.02	-0.11	-0.02	-0.18	-
November 2017	-0.01	0.00	-0.17	-0.04	-0.06	-0.03	-0.20	-
December 2017	-0.03	-0.01	-0.31	-0.07	0.00	-0.01	-0.24	-
January 2018	-0.08	-0.02	-0.39	-0.11	-0.01	0.02	-0.30	-
February 2018	-0.12	-0.03	-0.44	-0.15	-0.04	0.05	-0.37	-
March 2018	-0.16	-0.01	-0.58	-0.20	-0.09	0.06	-0.40	-
April 2018	-0.18	0.03	-0.62	-0.26	-0.13	0.09	-0.41	-
May 2018	-0.19	0.06	-0.62	-0.30	-0.25	0.08	-0.37	-
June 2018	-0.14	0.05	-0.55	-0.32	-0.28	0.10	-0.43	-
<b>Year on Year growth rate (%)</b>								
July 2017	-0.15	0.83	0.32	1.23	-1.34	1.08	1.97	-
August 2017	-0.07	0.73	0.09	1.12	-1.20	1.21	1.68	-
September 2017	-0.04	0.62	-0.07	0.97	-1.04	1.26	1.25	-
October 2017	-0.06	0.49	-0.23	0.79	-0.86	1.17	0.72	-
November 2017	-0.11	0.35	-0.39	0.60	-0.60	1.00	0.13	-
December 2017	-0.18	0.20	-0.61	0.37	-0.30	0.80	-0.47	-
January 2018	-0.27	0.08	-0.92	0.14	-0.14	0.63	-1.06	-
February 2018	-0.37	-0.01	-1.26	-0.08	-0.16	0.51	-1.60	-
March 2018	-0.50	-0.03	-1.76	-0.34	-0.31	0.44	-2.09	-
April 2018	-0.65	0.01	-2.32	-0.65	-0.54	0.41	-2.50	-
May 2018	-0.81	0.07	-2.93	-1.01	-0.88	0.41	-2.81	-
June 2018	-0.93	0.10	-3.51	-1.38	-1.21	0.44	-3.15	-



## OTHER OECD COUNTRIES

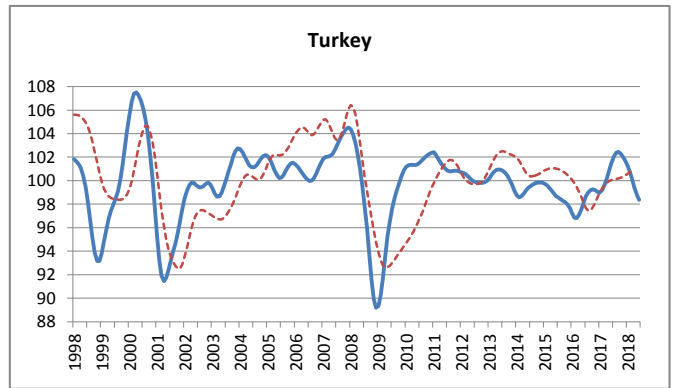
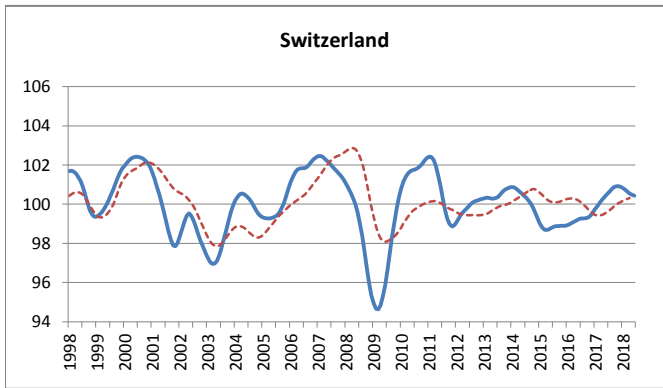
----- Reference series      — Composite leading indicators



	Netherlands	Norway	Poland	Portugal	Slovak Republic	Slovenia	Spain	Sweden
<b>Amplitude adjusted (long term average =100)</b>								
July 2017	100.57	100.16	99.74	101.06	100.18	100.20	99.96	99.96
August 2017	100.58	100.23	99.61	101.06	100.35	100.20	99.96	99.92
September 2017	100.61	100.33	99.53	100.89	100.47	100.31	99.97	99.88
October 2017	100.64	100.45	99.47	100.63	100.54	100.45	100.00	99.84
November 2017	100.66	100.59	99.43	100.36	100.59	100.55	100.01	99.79
December 2017	100.66	100.71	99.41	100.10	100.63	100.55	100.01	99.71
January 2018	100.63	100.82	99.44	99.90	100.66	100.41	99.99	99.64
February 2018	100.58	100.91	99.48	99.76	100.65	100.15	99.93	99.58
March 2018	100.50	100.95	99.50	99.66	100.60	99.81	99.84	99.55
April 2018	100.41	100.98	99.50	99.51	100.54	99.46	99.74	99.54
May 2018	100.31	101.01	99.50	99.37	100.48	99.14	99.64	99.53
June 2018	100.20	101.02	99.52	99.28	100.41	98.83	99.52	99.51
<b>Month on Month growth rate (%)</b>								
July 2017	0.01	0.03	-0.17	0.14	0.21	-0.09	-0.01	-0.02
August 2017	0.02	0.07	-0.13	-0.01	0.18	0.00	0.00	-0.04
September 2017	0.03	0.10	-0.09	-0.16	0.12	0.11	0.01	-0.04
October 2017	0.03	0.13	-0.06	-0.25	0.07	0.14	0.02	-0.04
November 2017	0.02	0.14	-0.04	-0.27	0.05	0.10	0.02	-0.06
December 2017	0.00	0.12	-0.01	-0.25	0.04	0.00	0.00	-0.07
January 2018	-0.02	0.11	0.02	-0.20	0.03	-0.14	-0.03	-0.07
February 2018	-0.05	0.09	0.04	-0.14	-0.01	-0.26	-0.06	-0.06
March 2018	-0.08	0.03	0.02	-0.11	-0.05	-0.34	-0.09	-0.03
April 2018	-0.09	0.03	0.00	-0.15	-0.06	-0.35	-0.10	-0.01
May 2018	-0.10	0.03	0.00	-0.14	-0.06	-0.33	-0.11	-0.01
June 2018	-0.11	0.02	0.02	-0.09	-0.07	-0.31	-0.12	-0.02
<b>Year on Year growth rate (%)</b>								
July 2017	0.64	1.16	-0.85	0.80	0.01	0.69	-0.12	0.91
August 2017	0.64	1.14	-0.94	0.88	0.17	0.62	-0.03	0.89
September 2017	0.63	1.09	-0.98	0.81	0.32	0.54	0.03	0.80
October 2017	0.59	1.03	-1.01	0.63	0.50	0.41	0.07	0.66
November 2017	0.52	0.95	-1.05	0.38	0.72	0.20	0.08	0.45
December 2017	0.42	0.86	-1.09	0.11	0.96	-0.09	0.07	0.22
January 2018	0.30	0.79	-1.07	-0.15	1.17	-0.42	0.03	0.00
February 2018	0.17	0.78	-0.99	-0.38	1.26	-0.72	-0.04	-0.19
March 2018	0.03	0.77	-0.90	-0.63	1.20	-0.99	-0.14	-0.33
April 2018	-0.11	0.82	-0.78	-0.96	1.01	-1.18	-0.24	-0.40
May 2018	-0.23	0.87	-0.60	-1.32	0.75	-1.31	-0.35	-0.45
June 2018	-0.35	0.89	-0.39	-1.62	0.45	-1.46	-0.46	-0.47

## OTHER OECD COUNTRIES

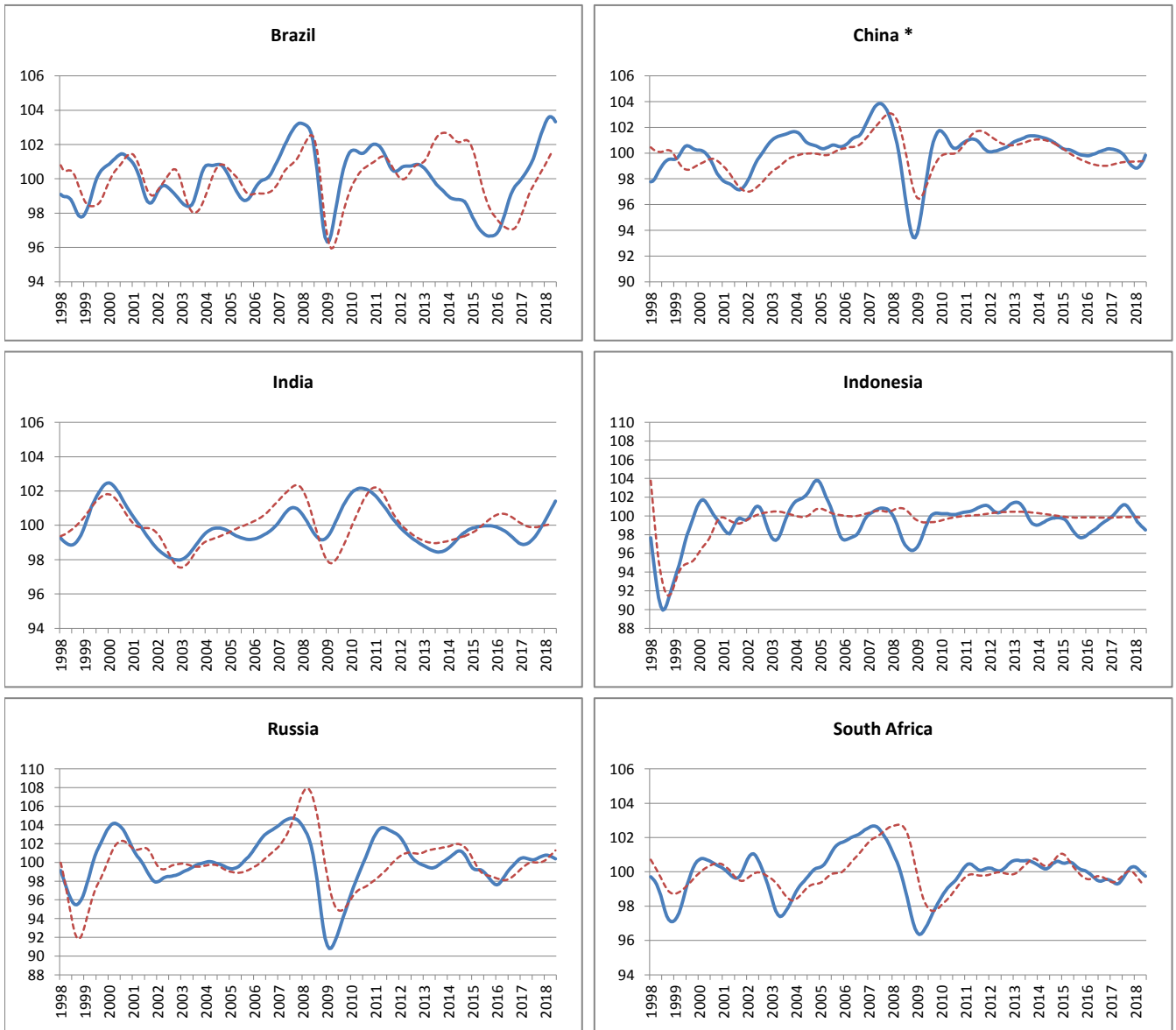
----- Reference series      — Composite leading indicators



	Switzerland	Turkey
<b>Amplitude adjusted (long term average =100)</b>		
July 2017	100.61	102.03
August 2017	100.74	102.37
September 2017	100.85	102.45
October 2017	100.90	102.31
November 2017	100.91	102.04
December 2017	100.89	101.69
January 2018	100.83	101.29
February 2018	100.74	100.77
March 2018	100.64	100.12
April 2018	100.54	99.43
May 2018	100.47	98.81
June 2018	100.43	98.35
<b>Month on Month growth rate (%)</b>		
July 2017	0.13	0.56
August 2017	0.13	0.33
September 2017	0.11	0.08
October 2017	0.05	-0.13
November 2017	0.01	-0.26
December 2017	-0.02	-0.35
January 2018	-0.06	-0.40
February 2018	-0.08	-0.51
March 2018	-0.10	-0.64
April 2018	-0.09	-0.69
May 2018	-0.07	-0.63
June 2018	-0.05	-0.46
<b>Year on Year growth rate (%)</b>		
July 2017	1.36	3.40
August 2017	1.48	3.41
September 2017	1.57	3.28
October 2017	1.59	3.09
November 2017	1.51	2.88
December 2017	1.33	2.66
January 2018	1.09	2.32
February 2018	0.83	1.57
March 2018	0.56	0.48
April 2018	0.33	-0.76
May 2018	0.13	-1.99
June 2018	-0.06	-3.07

## MAJOR NON MEMBER COUNTRIES

----- Reference series      — Composite leading indicators



\* The reference series for China is the value added of industry ,at 1995 constant prices,100 million Yuan.

	Brasil	China	India	Indonesia	Russia	South Africa
<b>Amplitude adjusted (long term average =100)</b>						
July 2017	101.17	99.90	99.22	101.18	100.28	99.65
August 2017	101.50	99.70	99.36	101.20	100.33	99.83
September 2017	101.88	99.48	99.52	101.05	100.42	100.01
October 2017	102.25	99.25	99.69	100.78	100.53	100.16
November 2017	102.61	99.06	99.88	100.46	100.64	100.27
December 2017	102.95	98.91	100.08	100.11	100.73	100.30
January 2018	103.26	98.83	100.29	99.75	100.77	100.28
February 2018	103.49	98.84	100.51	99.36	100.77	100.20
March 2018	103.62	98.95	100.73	99.16	100.72	100.08
April 2018	103.62	99.16	100.95	98.93	100.63	99.95
May 2018	103.51	99.44	101.18	98.72	100.52	99.84
June 2018	103.31	99.84	101.40	98.51	100.39	99.74
<b>Month on Month growth rate (%)</b>						
July 2017	0.27	-0.15	0.12	0.16	-0.01	0.18
August 2017	0.33	-0.19	0.14	0.01	0.05	0.18
September 2017	0.37	-0.23	0.16	-0.15	0.09	0.17
October 2017	0.37	-0.23	0.18	-0.26	0.11	0.15
November 2017	0.35	-0.19	0.19	-0.32	0.11	0.11
December 2017	0.33	-0.15	0.20	-0.35	0.09	0.03
January 2018	0.30	-0.08	0.21	-0.36	0.05	-0.03
February 2018	0.23	0.01	0.21	-0.39	-0.01	-0.08
March 2018	0.12	0.12	0.22	-0.21	-0.05	-0.12
April 2018	0.00	0.20	0.22	-0.22	-0.08	-0.13
May 2018	-0.11	0.28	0.22	-0.22	-0.11	-0.12
June 2018	-0.19	0.41	0.22	-0.21	-0.13	-0.10
<b>Year on Year growth rate (%)</b>						
July 2017	2.44	-0.20	-0.27	2.29	1.10	0.19
August 2017	2.43	-0.45	-0.03	2.11	0.90	0.38
September 2017	2.52	-0.73	0.25	1.79	0.74	0.51
October 2017	2.71	-1.01	0.54	1.36	0.62	0.62
November 2017	2.93	-1.25	0.84	0.90	0.51	0.71
December 2017	3.15	-1.41	1.13	0.42	0.41	0.77
January 2018	3.30	-1.48	1.40	-0.10	0.33	0.80
February 2018	3.36	-1.45	1.64	-0.68	0.27	0.80
March 2018	3.30	-1.30	1.86	-1.13	0.24	0.77
April 2018	3.12	-1.05	2.04	-1.61	0.21	0.67
May 2018	2.82	-0.70	2.20	-2.07	0.18	0.50
June 2018	2.40	-0.20	2.33	-2.49	0.10	0.27