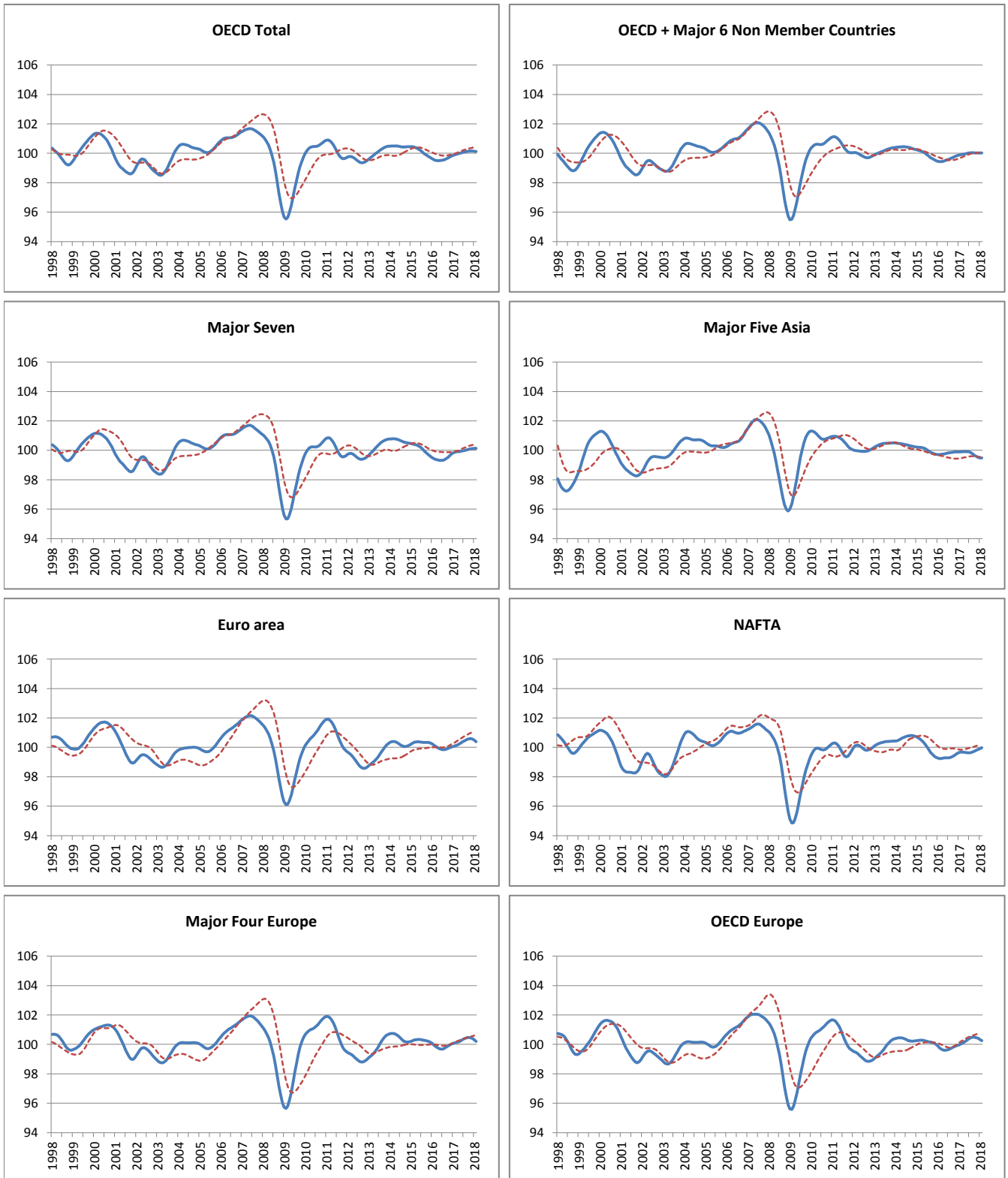


AREA TOTALS

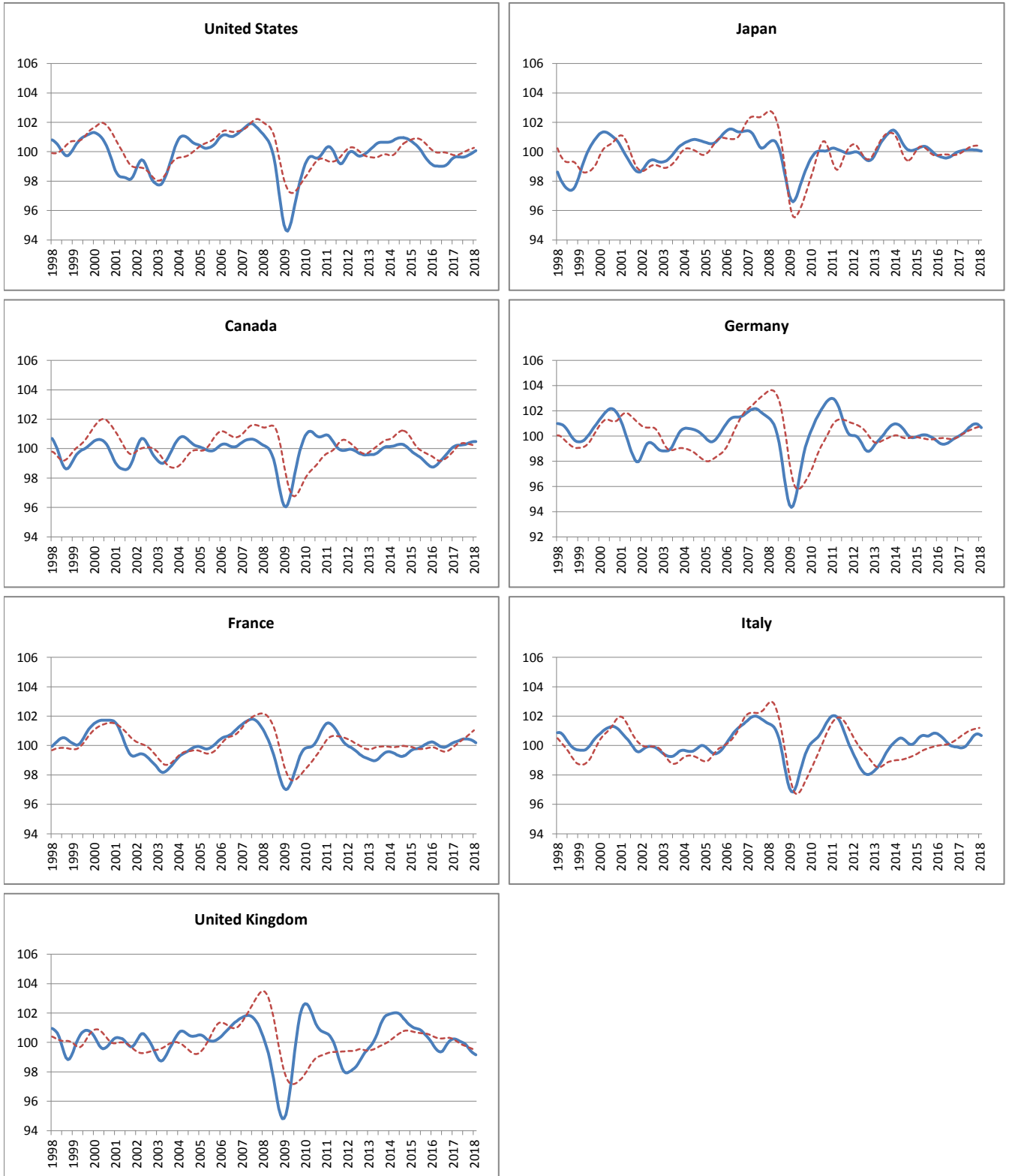
----- Reference series — Composite leading indicators



	OECD Total	OECD + Major 6 Non Member Countries	Major Seven	Major Five Asia	Euro Area	NAFTA	Major Four Europe	OECD Europe
Amplitude adjusted (long term average =100)								
March 2017	99.94	99.92	99.90	99.90	100.14	99.67	100.13	100.08
April 2017	99.97	99.95	99.91	99.91	100.20	99.66	100.17	100.15
May 2017	100.00	99.97	99.93	99.91	100.27	99.65	100.22	100.23
June 2017	100.04	100.00	99.95	99.91	100.34	99.63	100.29	100.32
July 2017	100.07	100.02	99.97	99.89	100.42	99.63	100.36	100.40
August 2017	100.10	100.03	100.01	99.83	100.49	99.65	100.42	100.46
September 2017	100.13	100.03	100.04	99.75	100.54	99.69	100.46	100.49
October 2017	100.15	100.03	100.08	99.65	100.58	99.75	100.46	100.49
November 2017	100.15	100.02	100.11	99.58	100.59	99.81	100.44	100.45
December 2017	100.15	100.02	100.12	99.51	100.56	99.86	100.39	100.41
January 2018	100.14	100.02	100.13	99.48	100.49	99.91	100.31	100.34
February 2018	100.12	100.03	100.14	99.49	100.39	99.97	100.20	100.25
Month on Month growth rate (%)								
March 2017	0.03	0.02	0.03	0.01	0.04	0.00	0.03	0.06
April 2017	0.03	0.02	0.01	0.01	0.06	-0.01	0.03	0.07
May 2017	0.03	0.03	0.02	0.01	0.07	-0.01	0.06	0.08
June 2017	0.03	0.03	0.02	0.00	0.08	-0.02	0.07	0.09
July 2017	0.03	0.02	0.02	-0.03	0.08	-0.01	0.07	0.08
August 2017	0.03	0.01	0.03	-0.06	0.07	0.02	0.06	0.06
September 2017	0.03	0.00	0.04	-0.08	0.06	0.04	0.04	0.03
October 2017	0.02	0.00	0.04	-0.09	0.04	0.06	0.01	0.00
November 2017	0.01	-0.01	0.03	-0.08	0.01	0.06	-0.02	-0.03
December 2017	0.00	-0.01	0.02	-0.06	-0.03	0.05	-0.05	-0.05
January 2018	-0.01	0.00	0.01	-0.03	-0.07	0.05	-0.08	-0.07
February 2018	-0.02	0.01	0.00	0.01	-0.10	0.06	-0.11	-0.09
Year on Year growth rate (%)								
March 2017	0.42	0.50	0.52	0.18	0.08	0.43	0.27	0.41
April 2017	0.46	0.49	0.57	0.17	0.21	0.40	0.39	0.53
May 2017	0.50	0.48	0.61	0.15	0.35	0.37	0.51	0.63
June 2017	0.52	0.46	0.64	0.12	0.47	0.35	0.61	0.70
July 2017	0.54	0.43	0.66	0.07	0.57	0.33	0.68	0.75
August 2017	0.54	0.40	0.65	-0.01	0.64	0.34	0.70	0.77
September 2017	0.51	0.35	0.62	-0.11	0.67	0.34	0.66	0.73
October 2017	0.47	0.29	0.56	-0.22	0.66	0.33	0.58	0.66
November 2017	0.41	0.23	0.48	-0.32	0.62	0.30	0.48	0.58
December 2017	0.34	0.18	0.39	-0.38	0.54	0.28	0.36	0.48
January 2018	0.28	0.14	0.32	-0.41	0.43	0.27	0.24	0.38
February 2018	0.22	0.13	0.27	-0.41	0.29	0.30	0.09	0.24

MAJOR SEVEN OECD COUNTRIES

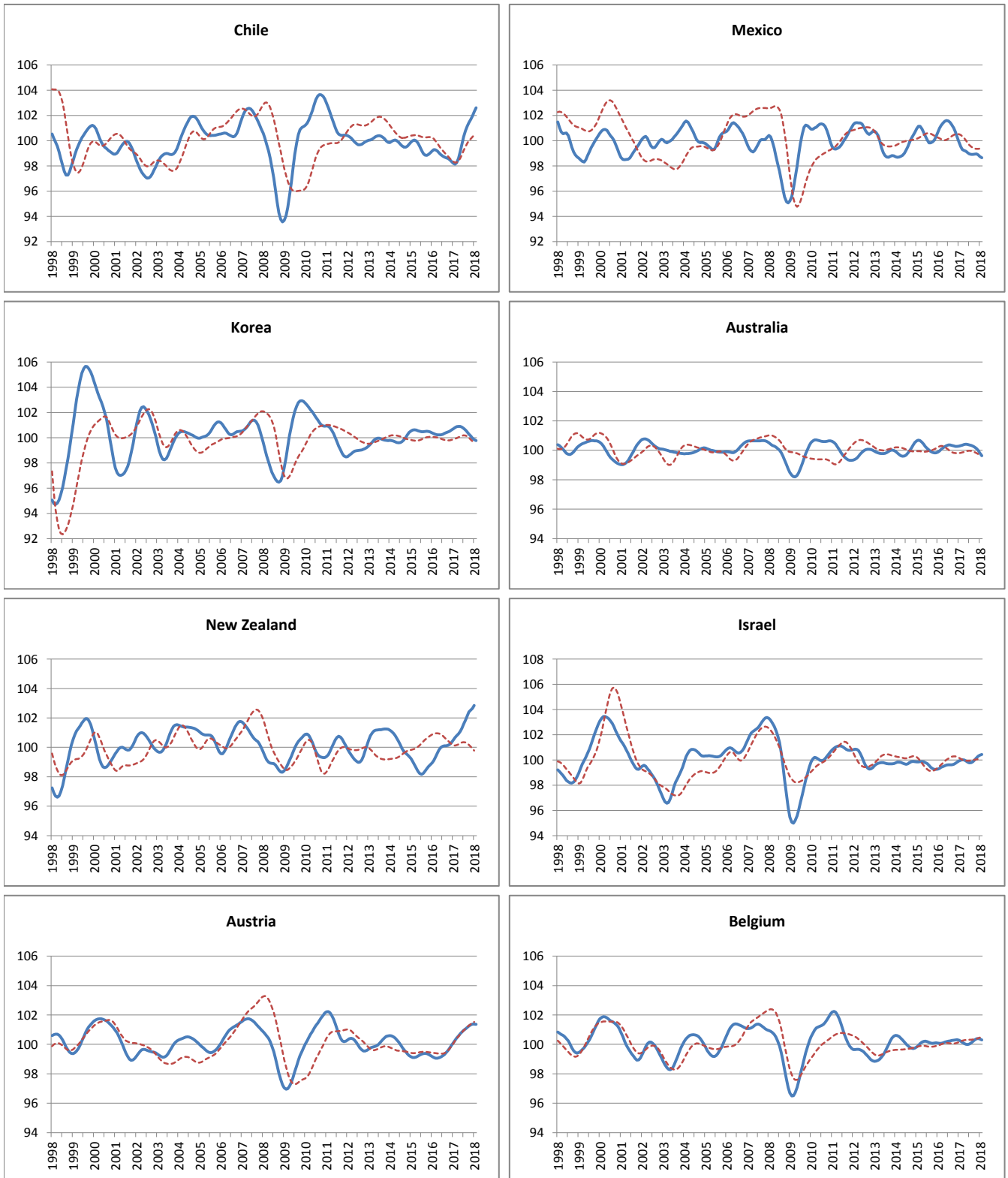
----- Reference series — Composite leading indicators



	Canada	United States	Japan	France	Germany	Italy	United Kingdom
Amplitude adjusted (long term average =100)							
March 2017	100.21	99.66	100.07	100.27	100.14	99.84	100.20
April 2017	100.23	99.65	100.10	100.32	100.25	99.87	100.13
May 2017	100.24	99.64	100.12	100.37	100.38	99.94	100.07
June 2017	100.25	99.64	100.13	100.41	100.52	100.06	100.02
July 2017	100.26	99.64	100.13	100.44	100.66	100.21	99.97
August 2017	100.29	99.66	100.13	100.45	100.78	100.39	99.89
September 2017	100.33	99.71	100.13	100.44	100.89	100.56	99.76
October 2017	100.38	99.78	100.13	100.42	100.96	100.69	99.59
November 2017	100.43	99.84	100.12	100.39	100.97	100.78	99.44
December 2017	100.47	99.91	100.10	100.35	100.92	100.80	99.32
January 2018	100.48	99.99	100.06	100.28	100.81	100.75	99.24
February 2018	100.48	100.08	100.03	100.18	100.67	100.67	99.15
Month on Month growth rate (%)							
March 2017	0.04	0.03	0.03	0.04	0.09	-0.01	-0.04
April 2017	0.02	0.00	0.02	0.05	0.11	0.03	-0.07
May 2017	0.01	-0.01	0.02	0.05	0.13	0.08	-0.06
June 2017	0.01	-0.01	0.01	0.04	0.14	0.12	-0.05
July 2017	0.01	0.00	0.00	0.03	0.14	0.15	-0.05
August 2017	0.03	0.03	0.00	0.01	0.13	0.18	-0.08
September 2017	0.04	0.05	0.00	-0.01	0.10	0.17	-0.13
October 2017	0.05	0.06	0.00	-0.02	0.07	0.13	-0.16
November 2017	0.05	0.07	-0.01	-0.03	0.02	0.08	-0.16
December 2017	0.04	0.07	-0.02	-0.05	-0.05	0.02	-0.12
January 2018	0.01	0.08	-0.04	-0.07	-0.11	-0.04	-0.08
February 2018	0.00	0.08	-0.03	-0.09	-0.15	-0.08	-0.09
Year on Year growth rate (%)							
March 2017	1.42	0.63	0.43	0.12	0.76	-0.79	0.59
April 2017	1.33	0.64	0.49	0.25	0.90	-0.66	0.66
May 2017	1.21	0.64	0.54	0.38	1.03	-0.47	0.70
June 2017	1.08	0.64	0.56	0.49	1.13	-0.22	0.68
July 2017	0.96	0.64	0.55	0.56	1.21	0.06	0.56
August 2017	0.86	0.65	0.50	0.57	1.25	0.34	0.32
September 2017	0.77	0.64	0.43	0.53	1.25	0.59	-0.01
October 2017	0.67	0.60	0.34	0.45	1.21	0.76	-0.35
November 2017	0.58	0.53	0.24	0.35	1.14	0.86	-0.65
December 2017	0.48	0.47	0.14	0.23	1.01	0.90	-0.87
January 2018	0.38	0.43	0.05	0.09	0.84	0.88	-0.99
February 2018	0.30	0.45	-0.01	-0.05	0.61	0.82	-1.09

OTHER OECD COUNTRIES

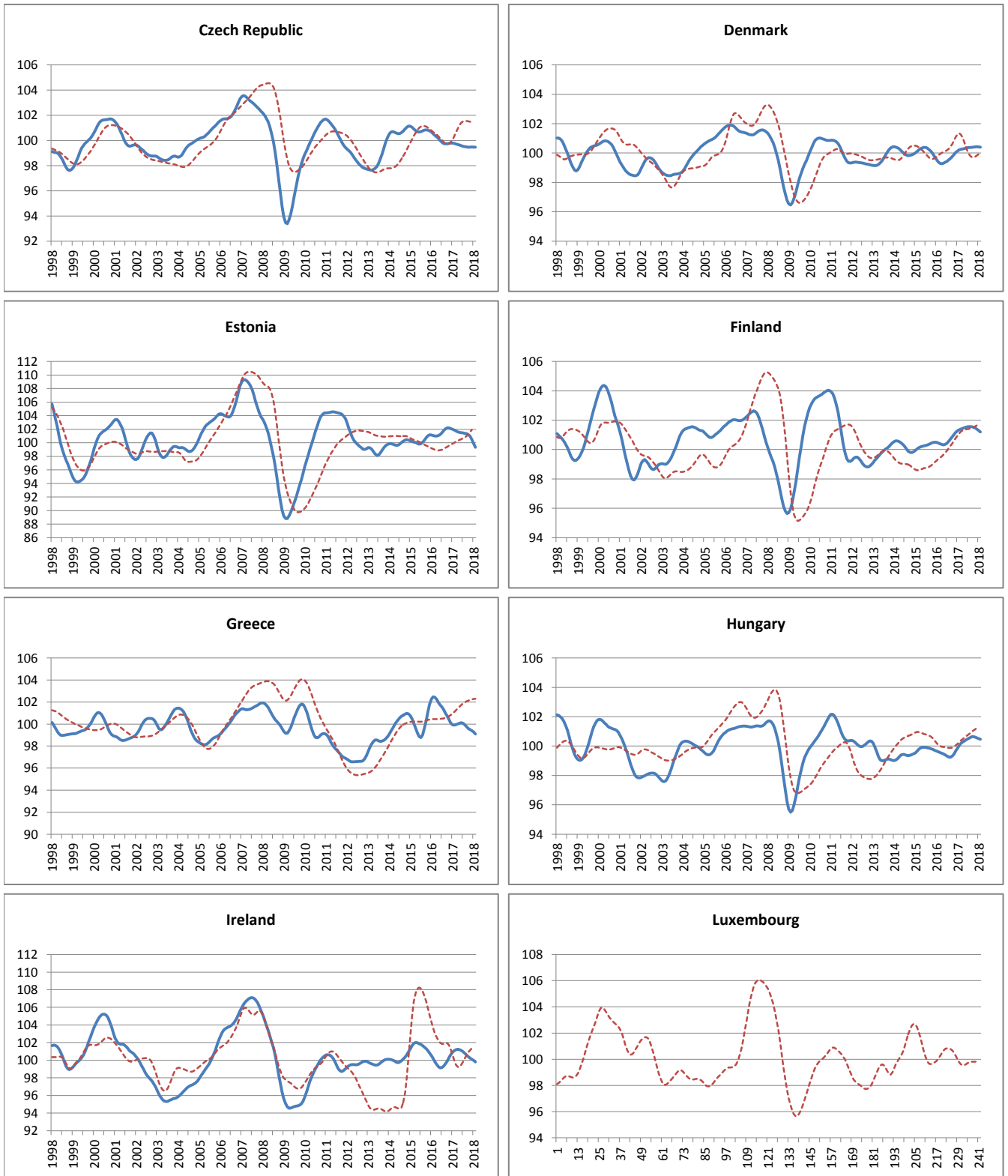
----- Reference series — Composite leading indicators



	Chile	Mexico	Korea	Australia	New Zealand	Israel	Austria	Belgium
Amplitude adjusted (long term average =100)								
March 2017	98.24	99.30	100.87	100.36	100.79	100.02	100.43	100.14
April 2017	98.60	99.21	100.90	100.39	100.91	100.00	100.58	100.06
May 2017	99.13	99.16	100.89	100.41	101.08	99.92	100.72	100.00
June 2017	99.72	99.05	100.83	100.40	101.30	99.83	100.84	99.99
July 2017	100.30	98.95	100.73	100.37	101.57	99.77	100.95	100.02
August 2017	100.79	98.91	100.60	100.32	101.85	99.79	101.05	100.10
September 2017	101.15	98.91	100.45	100.28	102.13	99.86	101.15	100.20
October 2017	101.44	98.93	100.29	100.22	102.40	100.00	101.25	100.30
November 2017	101.69	98.94	100.12	100.12	102.53	100.16	101.33	100.37
December 2017	101.96	98.87	99.97	99.98	102.66	100.29	101.37	100.40
January 2018	102.29	98.75	99.85	99.82	102.84	100.38	101.38	100.37
February 2018	102.62	98.64	99.76	99.63		100.44	101.36	100.30
Month on Month growth rate (%)								
March 2017	0.12	-0.24	0.08	0.04	0.13	0.04	0.16	-0.08
April 2017	0.37	-0.09	0.03	0.04	0.12	-0.02	0.15	-0.08
May 2017	0.54	-0.05	-0.01	0.02	0.16	-0.08	0.14	-0.06
June 2017	0.59	-0.11	-0.05	0.00	0.22	-0.09	0.12	-0.01
July 2017	0.58	-0.10	-0.10	-0.04	0.27	-0.06	0.11	0.03
August 2017	0.49	-0.04	-0.13	-0.04	0.28	0.02	0.10	0.07
September 2017	0.35	-0.01	-0.15	-0.05	0.27	0.07	0.10	0.11
October 2017	0.29	0.03	-0.16	-0.06	0.27	0.15	0.10	0.10
November 2017	0.25	0.01	-0.16	-0.09	0.13	0.16	0.08	0.07
December 2017	0.27	-0.07	-0.15	-0.14	0.12	0.13	0.04	0.02
January 2018	0.32	-0.13	-0.12	-0.17	0.18	0.09	0.01	-0.02
February 2018	0.32	-0.11	-0.08	-0.19		0.06	-0.02	-0.07
Year on Year growth rate (%)								
March 2017	-1.05	-1.89	0.60	0.28	1.46	0.61	1.39	0.07
April 2017	-0.58	-2.18	0.66	0.22	1.31	0.52	1.54	-0.04
May 2017	0.10	-2.34	0.66	0.15	1.24	0.38	1.65	-0.14
June 2017	0.84	-2.51	0.60	0.08	1.31	0.24	1.72	-0.20
July 2017	1.55	-2.57	0.46	0.00	1.49	0.16	1.76	-0.20
August 2017	2.12	-2.50	0.27	-0.04	1.75	0.18	1.76	-0.14
September 2017	2.53	-2.32	0.05	-0.06	2.02	0.24	1.73	-0.06
October 2017	2.89	-2.05	-0.16	-0.08	2.27	0.35	1.67	0.02
November 2017	3.24	-1.75	-0.40	-0.15	2.33	0.43	1.58	0.07
December 2017	3.66	-1.42	-0.63	-0.28	2.33	0.47	1.45	0.08
January 2018	4.16	-1.14	-0.84	-0.46	2.34	0.47	1.28	0.09
February 2018	4.57	-0.90	-1.02	-0.69		0.46	1.09	0.08

OTHER OECD COUNTRIES

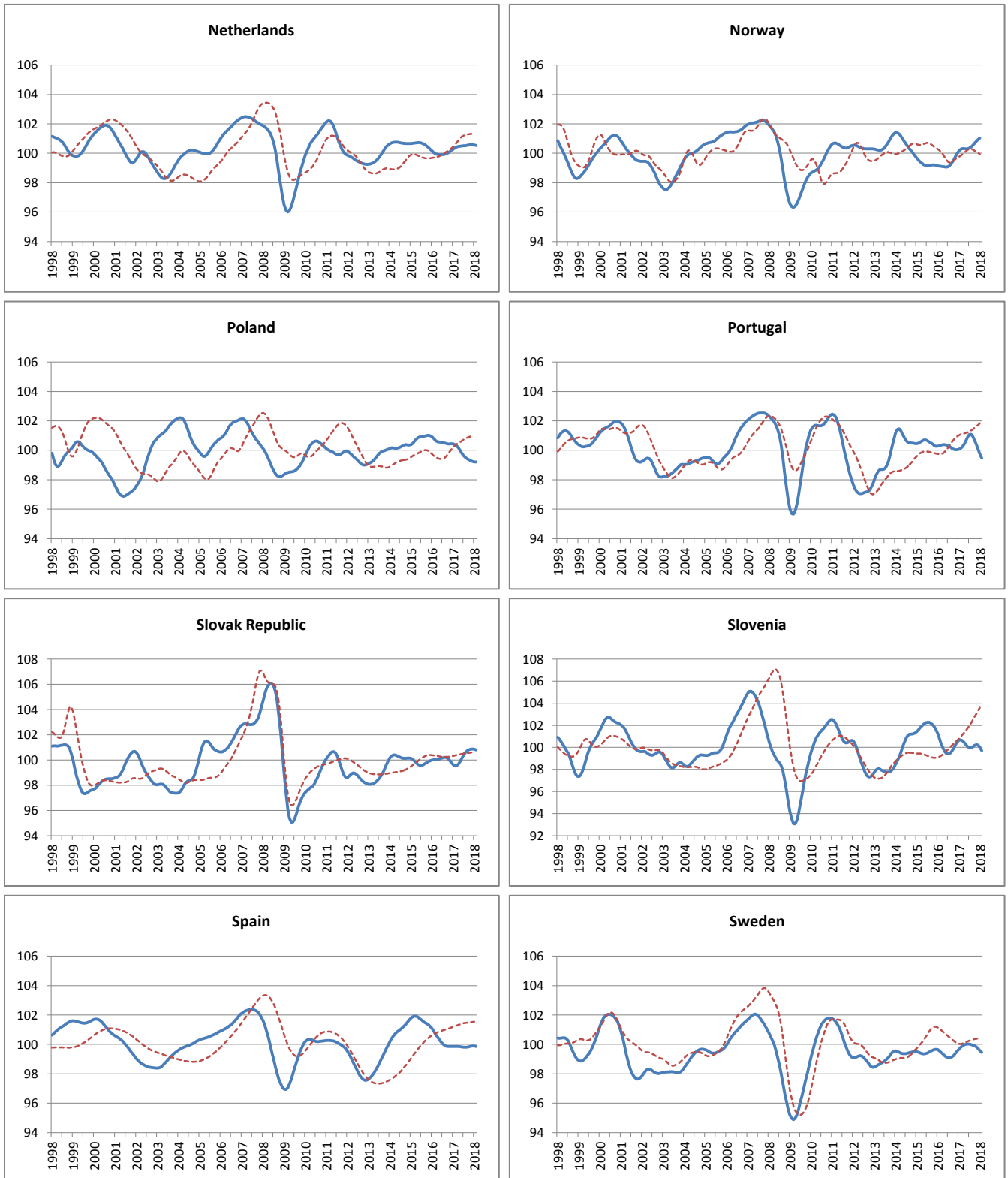
----- Reference series — Composite leading indicators



	Czech Republic	Denmark	Estonia	Finland	Greece	Hungary	Ireland	Luxembourg
Amplitude adjusted (long term average =100)								
March 2017	99.72	100.26	101.73	101.39	99.94	100.18	101.20	n.a
April 2017	99.68	100.28	101.61	101.44	100.02	100.28	101.23	n.a
May 2017	99.63	100.30	101.54	101.49	100.09	100.36	101.19	n.a
June 2017	99.58	100.34	101.50	101.53	100.11	100.42	101.10	n.a
July 2017	99.54	100.37	101.44	101.56	100.07	100.49	100.96	n.a
August 2017	99.50	100.38	101.40	101.56	99.93	100.57	100.79	n.a
September 2017	99.48	100.39	101.35	101.56	99.77	100.63	100.59	n.a
October 2017	99.46	100.40	101.21	101.52	99.60	100.64	100.40	n.a
November 2017	99.47	100.41	100.95	101.47	99.48	100.61	100.25	n.a
December 2017	99.47	100.42	100.51	101.40	99.40	100.56	100.12	n.a
January 2018	99.46	100.42	99.94	101.31	99.30	100.51	100.00	n.a
February 2018	99.46	100.39	99.33	101.20	99.10	100.46	99.81	n.a
Month on Month growth rate (%)								
March 2017	-0.04	0.04	-0.14	0.05	0.04	0.14	0.11	-
April 2017	-0.05	0.02	-0.12	0.04	0.08	0.10	0.03	-
May 2017	-0.05	0.02	-0.07	0.05	0.07	0.07	-0.04	-
June 2017	-0.05	0.04	-0.04	0.04	0.03	0.07	-0.09	-
July 2017	-0.04	0.03	-0.06	0.03	-0.05	0.07	-0.14	-
August 2017	-0.03	0.01	-0.04	0.01	-0.13	0.08	-0.17	-
September 2017	-0.02	0.01	-0.05	-0.01	-0.17	0.06	-0.19	-
October 2017	-0.01	0.01	-0.14	-0.03	-0.16	0.01	-0.19	-
November 2017	0.00	0.01	-0.26	-0.05	-0.12	-0.03	-0.16	-
December 2017	0.01	0.01	-0.43	-0.07	-0.08	-0.05	-0.13	-
January 2018	-0.02	0.00	-0.57	-0.09	-0.10	-0.05	-0.11	-
February 2018	0.00	-0.03	-0.61	-0.10	-0.20	-0.05	-0.19	-
Year on Year growth rate (%)								
March 2017	-0.68	0.97	0.72	0.99	-2.43	0.62	1.37	-
April 2017	-0.60	1.01	0.61	1.09	-2.17	0.77	1.73	-
May 2017	-0.52	1.01	0.48	1.16	-1.84	0.90	1.95	-
June 2017	-0.41	0.98	0.29	1.18	-1.59	1.04	1.99	-
July 2017	-0.32	0.94	-0.05	1.12	-1.44	1.18	1.81	-
August 2017	-0.26	0.86	-0.40	0.99	-1.34	1.33	1.46	-
September 2017	-0.25	0.76	-0.69	0.84	-1.22	1.39	1.00	-
October 2017	-0.28	0.64	-0.95	0.65	-1.09	1.34	0.48	-
November 2017	-0.30	0.52	-1.21	0.45	-0.91	1.16	-0.04	-
December 2017	-0.32	0.39	-1.55	0.23	-0.70	0.91	-0.51	-
January 2018	-0.34	0.28	-2.01	0.03	-0.63	0.65	-0.90	-
February 2018	-0.30	0.18	-2.49	-0.14	-0.80	0.42	-1.27	-

OTHER OECD COUNTRIES

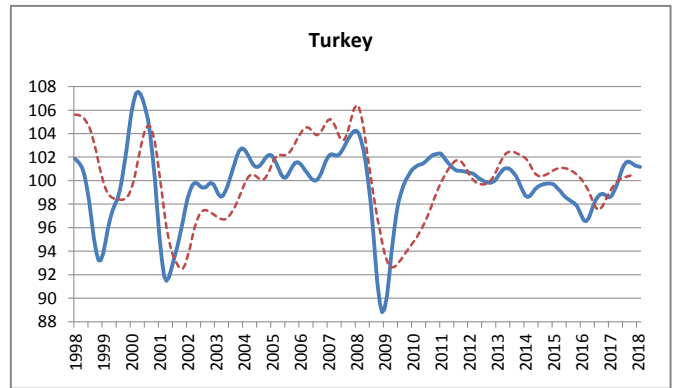
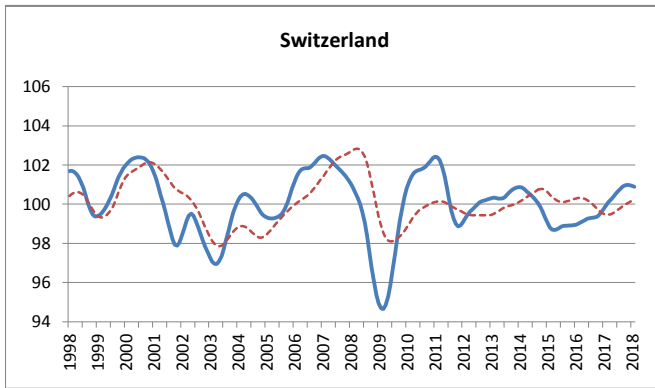
----- Reference series — Composite leading indicators



	Netherlands	Norway	Poland	Portugal	Slovak Republic	Slovenia	Spain	Sweden
Amplitude adjusted (long term average =100)								
March 2017	100.43	100.31	100.29	100.23	99.55	100.62	99.86	99.90
April 2017	100.47	100.31	100.16	100.41	99.69	100.45	99.86	99.97
May 2017	100.49	100.29	99.98	100.65	99.91	100.25	99.85	100.01
June 2017	100.50	100.30	99.78	100.89	100.16	100.08	99.83	100.03
July 2017	100.51	100.35	99.62	101.07	100.40	99.97	99.81	100.01
August 2017	100.52	100.43	99.50	101.08	100.60	99.96	99.80	99.98
September 2017	100.54	100.54	99.42	100.94	100.74	100.05	99.82	99.95
October 2017	100.57	100.68	99.35	100.68	100.82	100.17	99.84	99.90
November 2017	100.59	100.82	99.29	100.37	100.86	100.24	99.87	99.82
December 2017	100.59	100.94	99.24	100.06	100.88	100.20	99.89	99.71
January 2018	100.57	101.04	99.21	99.75	100.86	100.01	99.89	99.58
February 2018	100.53		99.20	99.46	100.80	99.71	99.86	99.45
Month on Month growth rate (%)								
March 2017	0.06	0.05	-0.09	0.11	0.03	-0.08	0.00	0.10
April 2017	0.04	0.00	-0.13	0.18	0.14	-0.16	0.00	0.07
May 2017	0.02	-0.02	-0.18	0.24	0.22	-0.20	-0.01	0.04
June 2017	0.01	0.01	-0.19	0.25	0.25	-0.17	-0.02	0.02
July 2017	0.01	0.05	-0.16	0.17	0.24	-0.11	-0.02	-0.01
August 2017	0.01	0.08	-0.12	0.02	0.20	-0.01	-0.01	-0.03
September 2017	0.02	0.11	-0.08	-0.15	0.14	0.09	0.01	-0.03
October 2017	0.03	0.14	-0.07	-0.26	0.08	0.12	0.03	-0.05
November 2017	0.02	0.14	-0.06	-0.30	0.04	0.07	0.03	-0.08
December 2017	0.00	0.12	-0.05	-0.32	0.01	-0.04	0.02	-0.11
January 2018	-0.02	0.10	-0.03	-0.31	-0.02	-0.19	0.00	-0.13
February 2018	-0.04		-0.01	-0.29	-0.06	-0.31	-0.03	-0.13
Year on Year growth rate (%)								
March 2017	0.46	1.22	-0.36	-0.12	-0.47	0.29	-0.83	0.46
April 2017	0.54	1.23	-0.41	0.03	-0.35	0.54	-0.65	0.64
May 2017	0.58	1.24	-0.57	0.26	-0.17	0.65	-0.49	0.79
June 2017	0.59	1.25	-0.76	0.54	0.02	0.65	-0.35	0.89
July 2017	0.60	1.26	-0.91	0.76	0.22	0.58	-0.23	0.92
August 2017	0.60	1.25	-0.99	0.85	0.39	0.51	-0.14	0.90
September 2017	0.59	1.21	-1.03	0.79	0.54	0.42	-0.06	0.82
October 2017	0.55	1.14	-1.08	0.61	0.70	0.28	-0.01	0.66
November 2017	0.49	1.07	-1.14	0.34	0.90	0.05	0.02	0.44
December 2017	0.39	0.97	-1.20	0.02	1.10	-0.27	0.03	0.18
January 2018	0.28	0.88	-1.22	-0.32	1.25	-0.64	0.03	-0.09
February 2018	0.16		-1.18	-0.66	1.28	-0.98	0.00	-0.34

OTHER OECD COUNTRIES

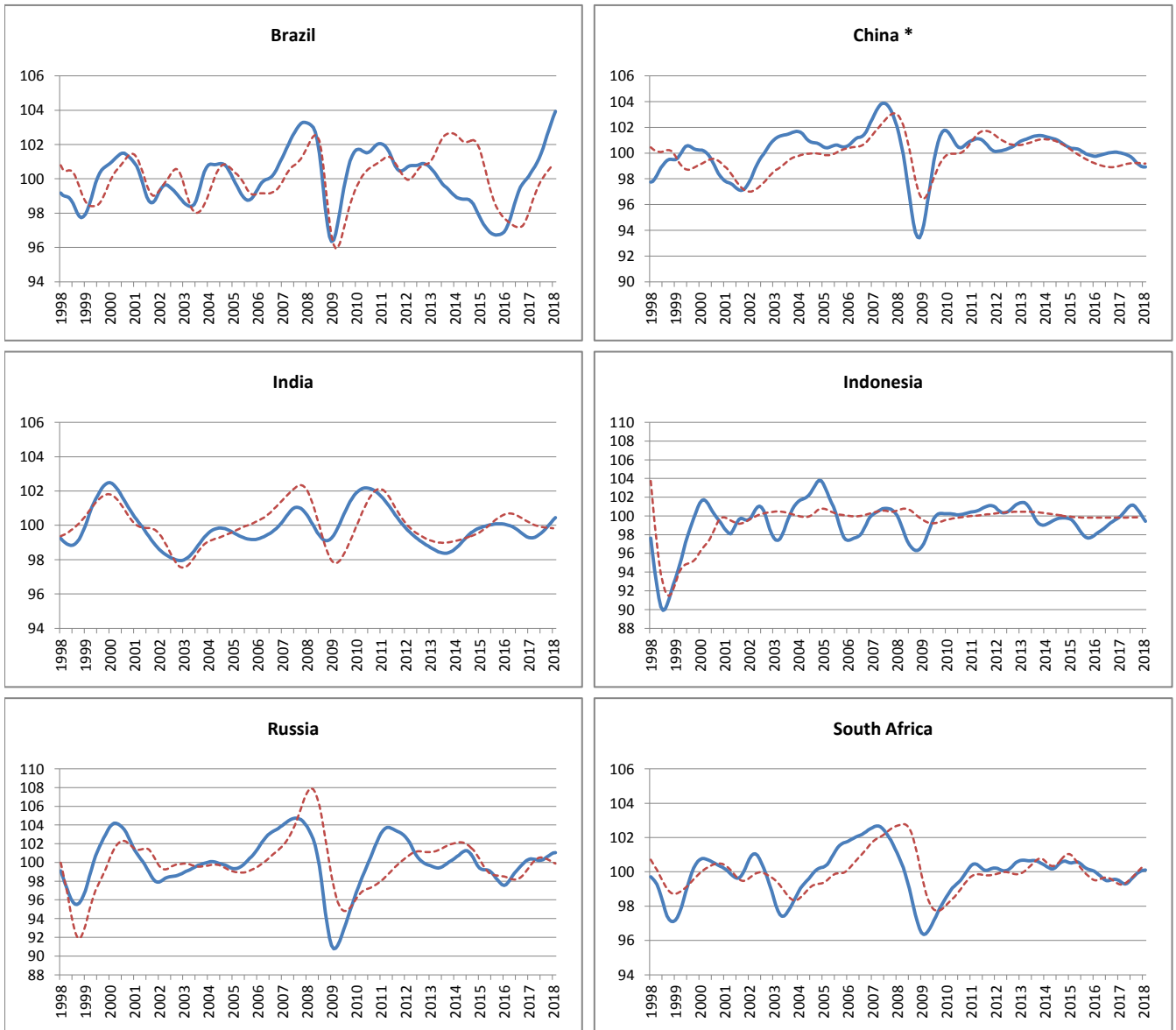
----- Reference series — Composite leading indicators



	Switzerland	Turkey
Amplitude adjusted (long term average =100)		
March 2017	100.10	99.12
April 2017	100.24	99.61
May 2017	100.37	100.17
June 2017	100.51	100.75
July 2017	100.65	101.26
August 2017	100.78	101.56
September 2017	100.89	101.64
October 2017	100.95	101.56
November 2017	100.98	101.42
December 2017	100.98	101.28
January 2018	100.94	101.21
February 2018	100.89	101.16
Month on Month growth rate (%)		
March 2017	0.16	0.38
April 2017	0.14	0.49
May 2017	0.13	0.56
June 2017	0.14	0.58
July 2017	0.13	0.50
August 2017	0.13	0.30
September 2017	0.11	0.08
October 2017	0.06	-0.08
November 2017	0.02	-0.15
December 2017	0.00	-0.13
January 2018	-0.04	-0.07
February 2018	-0.05	-0.05
Year on Year growth rate (%)		
March 2017	1.04	2.68
April 2017	1.12	2.92
May 2017	1.19	2.98
June 2017	1.27	2.98
July 2017	1.37	2.97
August 2017	1.49	2.96
September 2017	1.58	2.84
October 2017	1.61	2.72
November 2017	1.54	2.64
December 2017	1.38	2.65
January 2018	1.17	2.68
February 2018	0.95	2.45

MAJOR NON MEMBER COUNTRIES

----- Reference series — Composite leading indicators



* The reference series for China is the value added of industry ,at 1995 constant prices,100 million Yuan.

	Brasil	China	India	Indonesia	Russia	South Africa
Amplitude adjusted (long term average =100)						
March 2017	100.53	99.96	99.27	100.25	100.37	99.33
April 2017	100.73	99.92	99.31	100.51	100.32	99.29
May 2017	100.93	99.87	99.37	100.76	100.26	99.33
June 2017	101.17	99.80	99.44	100.98	100.21	99.42
July 2017	101.45	99.70	99.54	101.14	100.23	99.56
August 2017	101.79	99.56	99.65	101.16	100.31	99.68
September 2017	102.17	99.39	99.77	101.02	100.44	99.80
October 2017	102.55	99.21	99.90	100.76	100.59	99.91
November 2017	102.91	99.07	100.03	100.45	100.75	99.99
December 2017	103.26	98.96	100.17	100.13	100.90	100.05
January 2018	103.61	98.91	100.31	99.79	101.00	100.08
February 2018	103.92	98.93	100.45	99.42	101.06	100.11
Month on Month growth rate (%)						
March 2017	0.19	-0.04	0.01	0.24	-0.01	-0.08
April 2017	0.19	-0.05	0.03	0.26	-0.05	-0.04
May 2017	0.20	-0.05	0.06	0.25	-0.06	0.03
June 2017	0.23	-0.07	0.08	0.21	-0.04	0.10
July 2017	0.28	-0.10	0.10	0.16	0.02	0.13
August 2017	0.34	-0.14	0.11	0.02	0.08	0.13
September 2017	0.37	-0.17	0.12	-0.14	0.13	0.12
October 2017	0.37	-0.18	0.13	-0.25	0.15	0.11
November 2017	0.35	-0.14	0.13	-0.30	0.16	0.09
December 2017	0.34	-0.11	0.14	-0.32	0.14	0.05
January 2018	0.33	-0.05	0.14	-0.34	0.11	0.03
February 2018	0.30	0.02	0.14	-0.36	0.05	0.03
Year on Year growth rate (%)						
March 2017	3.27	0.18	-0.74	2.06	2.55	-0.53
April 2017	3.11	0.09	-0.66	2.17	2.17	-0.47
May 2017	2.91	-0.01	-0.56	2.28	1.76	-0.32
June 2017	2.72	-0.13	-0.42	2.32	1.40	-0.12
July 2017	2.59	-0.28	-0.25	2.27	1.14	0.07
August 2017	2.57	-0.45	-0.05	2.09	0.97	0.21
September 2017	2.66	-0.65	0.17	1.78	0.86	0.29
October 2017	2.84	-0.84	0.40	1.36	0.79	0.36
November 2017	3.05	-1.01	0.62	0.92	0.74	0.43
December 2017	3.27	-1.11	0.84	0.46	0.69	0.50
January 2018	3.44	-1.13	1.03	-0.04	0.67	0.59
February 2018	3.57	-1.07	1.20	-0.59	0.68	0.70