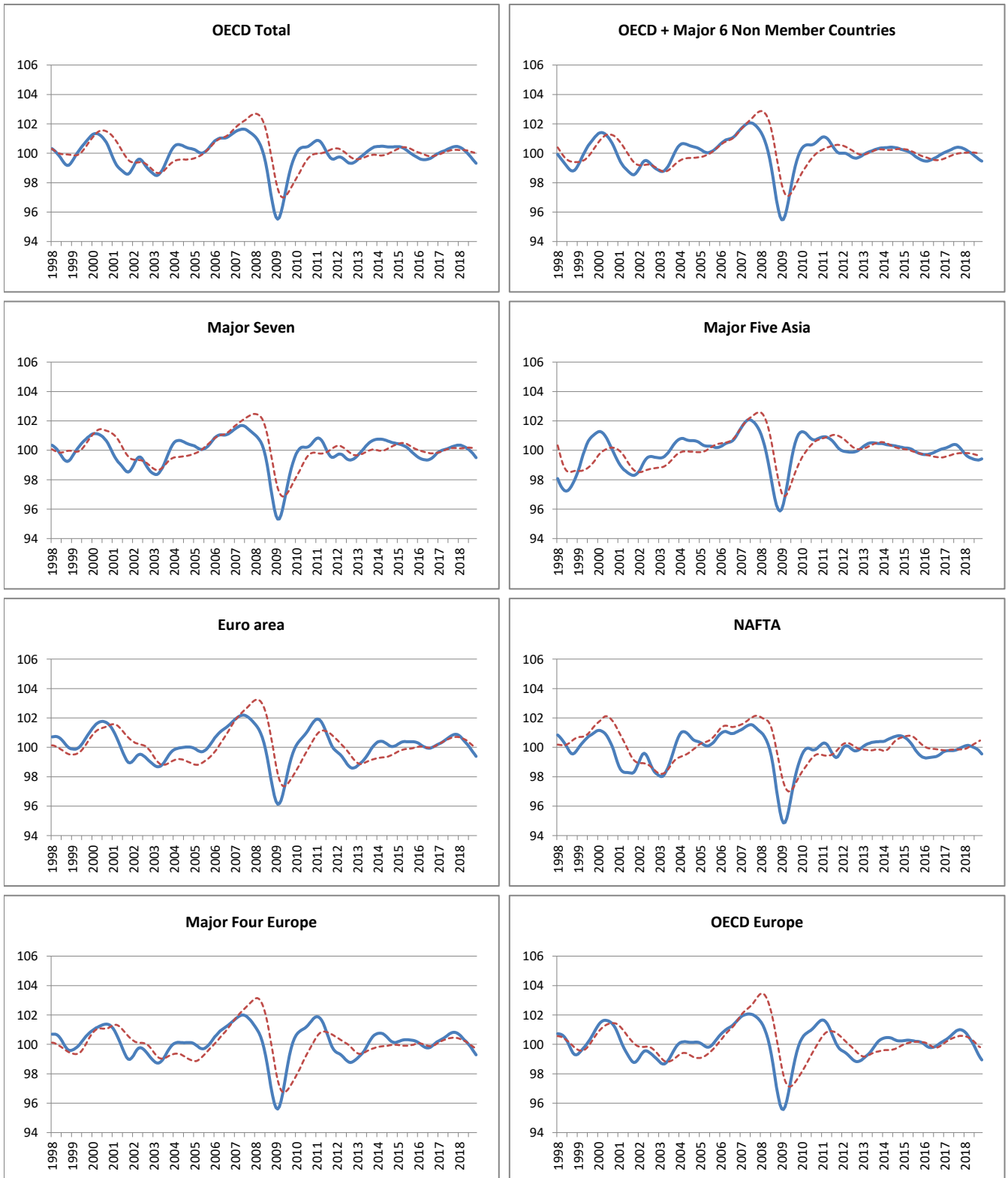


AREA TOTALS

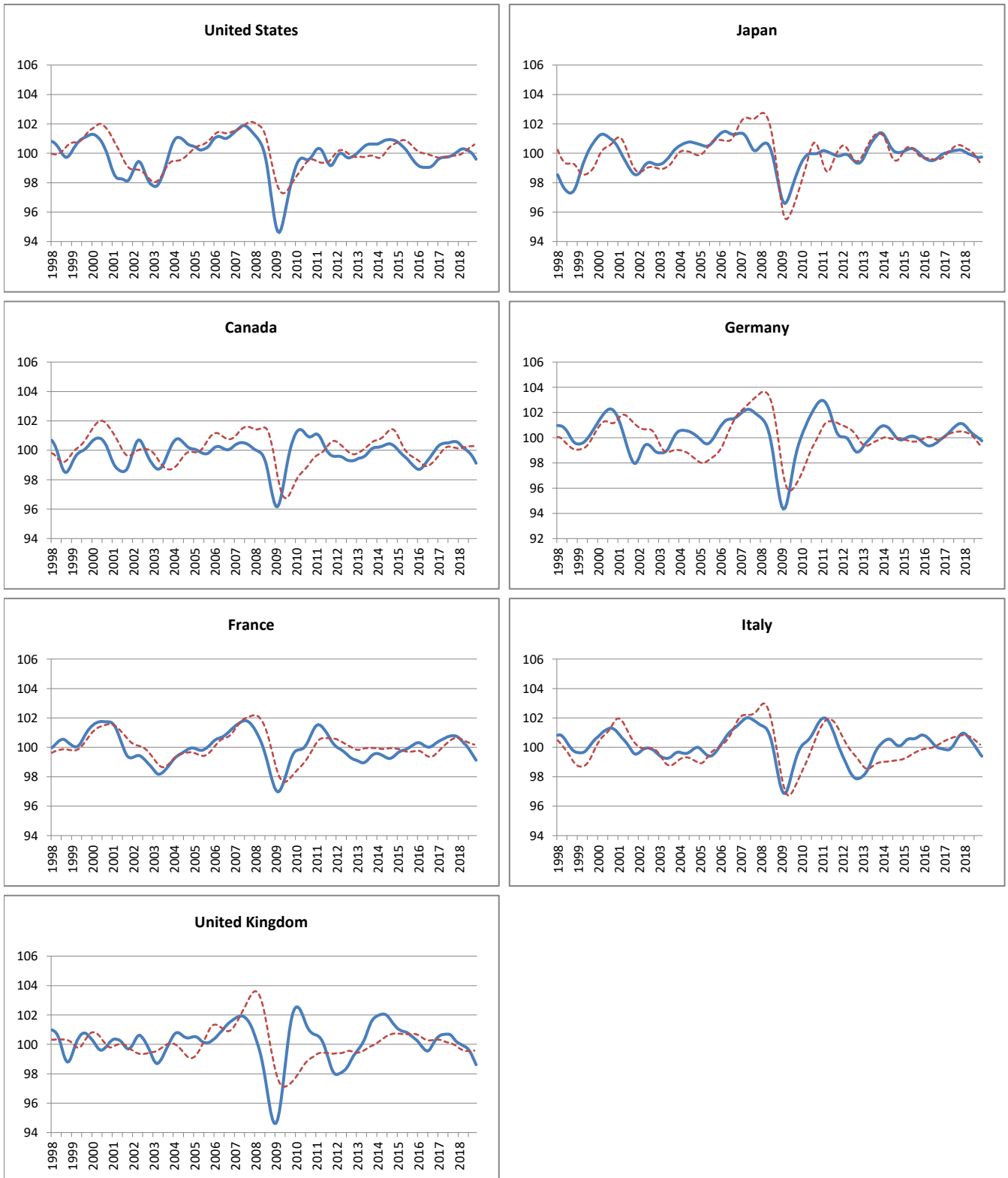
----- Reference series — Composite leading indicators



	OECD Total	OECD + Major 6 Non Member Countries	Major Seven	Major Five Asia	Euro Area	NAFTA	Major Four Europe	OECD Europe
Amplitude adjusted (long term average =100)								
December 2017	100.46	100.33	100.34	99.91	100.88	100.05	100.76	100.93
January 2018	100.43	100.28	100.35	99.77	100.81	100.09	100.68	100.85
February 2018	100.39	100.21	100.34	99.64	100.71	100.12	100.58	100.74
March 2018	100.31	100.14	100.30	99.56	100.58	100.13	100.45	100.58
April 2018	100.21	100.07	100.25	99.50	100.44	100.10	100.32	100.40
May 2018	100.10	99.98	100.18	99.45	100.30	100.05	100.20	100.21
June 2018	99.99	99.89	100.10	99.41	100.16	100.00	100.07	100.00
July 2018	99.86	99.80	100.02	99.37	100.02	99.95	99.94	99.77
August 2018	99.73	99.71	99.92	99.35	99.86	99.89	99.79	99.53
September 2018	99.58	99.61	99.79	99.34	99.70	99.80	99.62	99.30
October 2018	99.45	99.53	99.65	99.37	99.54	99.69	99.45	99.10
November 2018	99.32	99.47	99.50	99.42	99.39	99.55	99.28	98.94
Month on Month growth rate (%)								
December 2017	0.00	-0.04	0.02	-0.15	-0.02	0.05	-0.04	-0.05
January 2018	-0.02	-0.05	0.01	-0.14	-0.06	0.04	-0.07	-0.08
February 2018	-0.04	-0.07	-0.01	-0.13	-0.10	0.04	-0.11	-0.12
March 2018	-0.07	-0.07	-0.04	-0.08	-0.13	0.01	-0.13	-0.16
April 2018	-0.10	-0.08	-0.06	-0.06	-0.14	-0.03	-0.13	-0.18
May 2018	-0.11	-0.08	-0.07	-0.05	-0.14	-0.05	-0.12	-0.19
June 2018	-0.12	-0.09	-0.08	-0.04	-0.14	-0.05	-0.13	-0.21
July 2018	-0.13	-0.09	-0.09	-0.04	-0.14	-0.05	-0.13	-0.23
August 2018	-0.13	-0.10	-0.10	-0.03	-0.15	-0.06	-0.15	-0.24
September 2018	-0.14	-0.09	-0.13	-0.01	-0.16	-0.09	-0.17	-0.24
October 2018	-0.14	-0.08	-0.14	0.03	-0.16	-0.12	-0.17	-0.20
November 2018	-0.12	-0.06	-0.15	0.05	-0.15	-0.13	-0.17	-0.16
Year on Year growth rate (%)								
December 2017	0.51	0.34	0.54	-0.19	0.71	0.39	0.59	0.74
January 2018	0.42	0.23	0.45	-0.36	0.58	0.37	0.45	0.59
February 2018	0.32	0.11	0.38	-0.52	0.42	0.37	0.27	0.40
March 2018	0.20	-0.01	0.30	-0.65	0.23	0.36	0.08	0.16
April 2018	0.06	-0.14	0.21	-0.77	0.02	0.32	-0.11	-0.11
May 2018	-0.10	-0.27	0.11	-0.88	-0.20	0.27	-0.31	-0.40
June 2018	-0.27	-0.42	-0.01	-0.97	-0.43	0.22	-0.53	-0.71
July 2018	-0.45	-0.56	-0.13	-1.03	-0.66	0.16	-0.74	-1.05
August 2018	-0.64	-0.69	-0.28	-1.03	-0.89	0.07	-0.96	-1.37
September 2018	-0.82	-0.79	-0.46	-0.96	-1.12	-0.07	-1.17	-1.66
October 2018	-0.99	-0.86	-0.64	-0.82	-1.32	-0.25	-1.36	-1.88
November 2018	-1.13	-0.90	-0.82	-0.64	-1.49	-0.44	-1.51	-2.02

MAJOR SEVEN OECD COUNTRIES

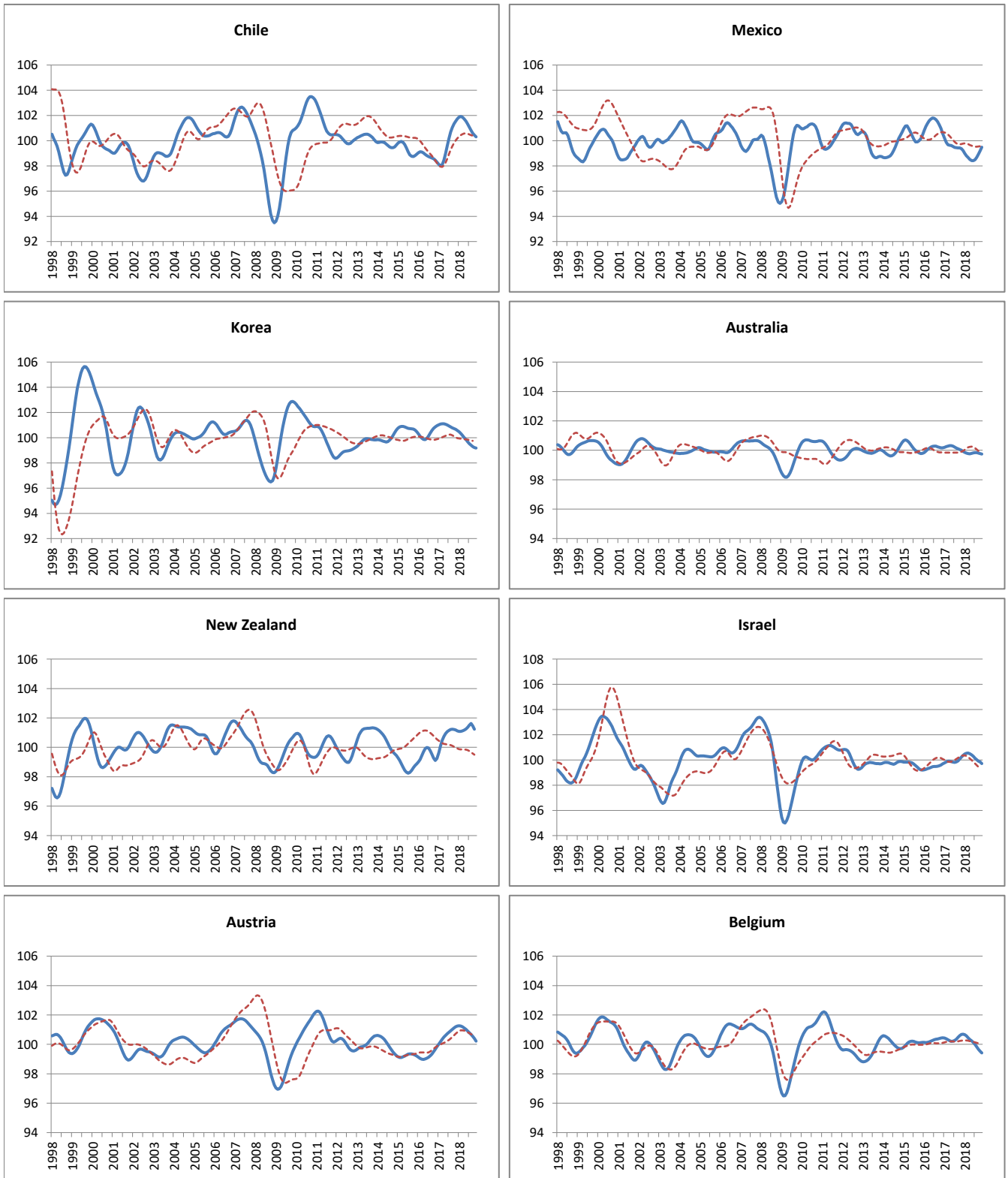
--- Reference series — Composite leading indicators



	Canada	United States	Japan	France	Germany	Italy	United Kingdom
Amplitude adjusted (long term average =100)							
December 2017	100.56	100.10	100.18	100.72	101.09	100.97	100.13
January 2018	100.47	100.19	100.11	100.64	100.99	100.94	100.07
February 2018	100.36	100.26	100.04	100.53	100.85	100.84	100.01
March 2018	100.24	100.30	99.98	100.40	100.68	100.71	99.94
April 2018	100.13	100.29	99.92	100.27	100.52	100.56	99.87
May 2018	100.04	100.26	99.88	100.15	100.38	100.40	99.81
June 2018	99.95	100.20	99.83	100.01	100.26	100.23	99.71
July 2018	99.84	100.14	99.78	99.85	100.17	100.06	99.57
August 2018	99.71	100.05	99.74	99.67	100.08	99.90	99.38
September 2018	99.54	99.93	99.71	99.47	99.99	99.72	99.13
October 2018	99.34	99.77	99.73	99.30	99.88	99.55	98.88
November 2018	99.13	99.59	99.75	99.13	99.76	99.40	98.62
Month on Month growth rate (%)							
December 2017	-0.04	0.08	-0.04	-0.05	-0.04	0.05	-0.11
January 2018	-0.09	0.09	-0.07	-0.08	-0.10	-0.03	-0.06
February 2018	-0.11	0.08	-0.07	-0.11	-0.14	-0.09	-0.06
March 2018	-0.11	0.04	-0.07	-0.13	-0.16	-0.13	-0.07
April 2018	-0.11	-0.01	-0.05	-0.13	-0.16	-0.15	-0.07
May 2018	-0.09	-0.04	-0.04	-0.13	-0.14	-0.16	-0.06
June 2018	-0.09	-0.05	-0.05	-0.14	-0.12	-0.17	-0.10
July 2018	-0.11	-0.06	-0.05	-0.16	-0.09	-0.17	-0.14
August 2018	-0.13	-0.08	-0.04	-0.18	-0.09	-0.17	-0.19
September 2018	-0.17	-0.12	-0.03	-0.19	-0.10	-0.17	-0.25
October 2018	-0.20	-0.16	0.02	-0.18	-0.11	-0.18	-0.26
November 2018	-0.22	-0.18	0.02	-0.17	-0.12	-0.15	-0.25
Year on Year growth rate (%)							
December 2017	0.37	0.61	0.23	0.38	1.10	1.07	-0.29
January 2018	0.16	0.58	0.11	0.22	0.90	1.07	-0.47
February 2018	-0.05	0.58	0.01	0.05	0.64	1.01	-0.61
March 2018	-0.21	0.58	-0.09	-0.13	0.35	0.88	-0.72
April 2018	-0.34	0.56	-0.18	-0.31	0.06	0.70	-0.80
May 2018	-0.45	0.52	-0.26	-0.50	-0.21	0.45	-0.87
June 2018	-0.55	0.46	-0.34	-0.69	-0.47	0.15	-0.98
July 2018	-0.67	0.38	-0.41	-0.89	-0.69	-0.20	-1.11
August 2018	-0.83	0.25	-0.46	-1.10	-0.89	-0.57	-1.25
September 2018	-1.02	0.07	-0.51	-1.31	-1.07	-0.93	-1.39
October 2018	-1.24	-0.17	-0.50	-1.48	-1.23	-1.25	-1.50
November 2018	-1.46	-0.42	-0.47	-1.63	-1.36	-1.51	-1.61

OTHER OECD COUNTRIES

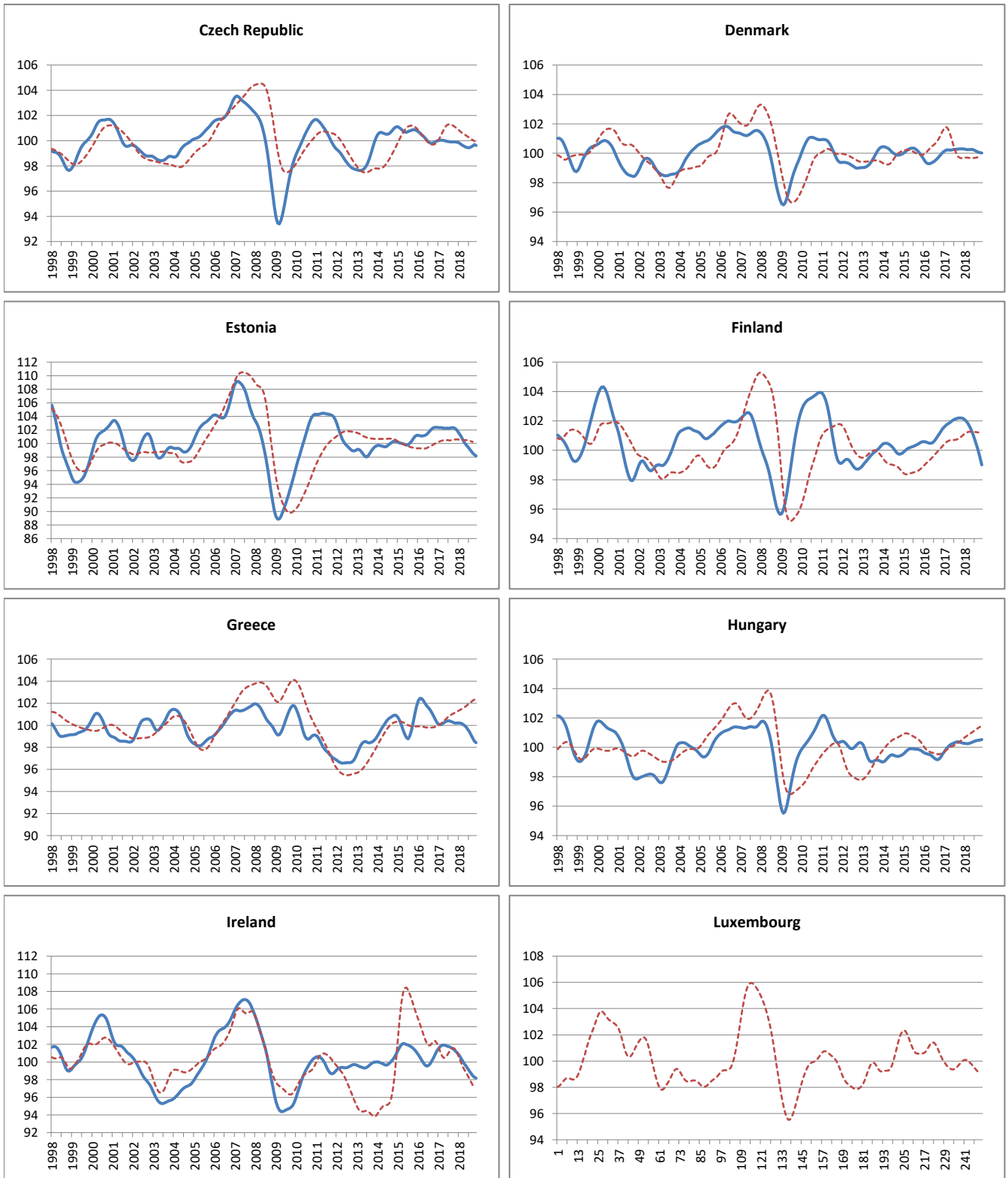
----- Reference series — Composite leading indicators



	Chile	Mexico	Korea	Australia	New Zealand	Israel	Austria	Belgium
Amplitude adjusted (long term average =100)								
December 2017	101.73	99.21	100.57	99.93	101.12	100.36	101.25	100.70
January 2018	101.87	98.99	100.47	99.86	101.08	100.46	101.27	100.66
February 2018	101.92	98.80	100.34	99.81	101.09	100.53	101.25	100.57
March 2018	101.87	98.66	100.19	99.77	101.11	100.54	101.20	100.45
April 2018	101.74	98.51	100.02	99.77	101.17	100.48	101.12	100.33
May 2018	101.54	98.43	99.85	99.79	101.25	100.39	101.02	100.23
June 2018	101.31	98.41	99.68	99.82	101.37	100.27	100.91	100.12
July 2018	101.07	98.50	99.53	99.84	101.50	100.14	100.79	99.99
August 2018	100.81	98.68	99.40	99.84	101.63	100.01	100.68	99.83
September 2018	100.58	98.93	99.29	99.81	101.46	99.91	100.55	99.67
October 2018	100.44	99.21	99.22	99.77	101.23	99.84	100.40	99.53
November 2018	100.31	99.48	99.19	99.74		99.71	100.22	99.41
Month on Month growth rate (%)								
December 2017	0.18	-0.16	-0.09	-0.07	-0.06	0.14	0.05	0.02
January 2018	0.14	-0.22	-0.10	-0.07	-0.03	0.10	0.02	-0.03
February 2018	0.05	-0.19	-0.12	-0.06	0.00	0.07	-0.02	-0.09
March 2018	-0.05	-0.14	-0.15	-0.03	0.03	0.01	-0.05	-0.12
April 2018	-0.13	-0.15	-0.16	-0.01	0.05	-0.06	-0.08	-0.12
May 2018	-0.19	-0.08	-0.17	0.02	0.08	-0.09	-0.10	-0.10
June 2018	-0.22	-0.01	-0.17	0.04	0.12	-0.12	-0.11	-0.11
July 2018	-0.24	0.08	-0.15	0.02	0.13	-0.14	-0.11	-0.13
August 2018	-0.26	0.19	-0.13	-0.01	0.12	-0.13	-0.11	-0.16
September 2018	-0.23	0.25	-0.11	-0.03	-0.16	-0.10	-0.13	-0.16
October 2018	-0.15	0.28	-0.07	-0.04	-0.23	-0.06	-0.15	-0.14
November 2018	-0.12	0.28	-0.03	-0.03		-0.13	-0.18	-0.11
Year on Year growth rate (%)								
December 2017	3.49	-1.36	-0.37	-0.25	1.89	0.68	1.41	0.24
January 2018	3.83	-1.20	-0.55	-0.34	1.44	0.69	1.25	0.23
February 2018	4.01	-1.07	-0.73	-0.44	0.98	0.69	1.06	0.19
March 2018	3.85	-1.02	-0.91	-0.51	0.64	0.65	0.85	0.13
April 2018	3.33	-1.12	-1.06	-0.54	0.42	0.58	0.63	0.08
May 2018	2.57	-1.20	-1.19	-0.52	0.32	0.53	0.40	0.02
June 2018	1.73	-1.14	-1.31	-0.46	0.30	0.46	0.18	-0.09
July 2018	0.89	-0.98	-1.38	-0.37	0.34	0.34	-0.03	-0.27
August 2018	0.13	-0.77	-1.44	-0.32	0.41	0.17	-0.24	-0.52
September 2018	-0.46	-0.51	-1.48	-0.30	0.23	-0.02	-0.46	-0.81
October 2018	-0.88	-0.22	-1.49	-0.28	0.01	-0.23	-0.71	-1.06
November 2018	-1.22	0.12	-1.46	-0.26		-0.51	-0.96	-1.25

OTHER OECD COUNTRIES

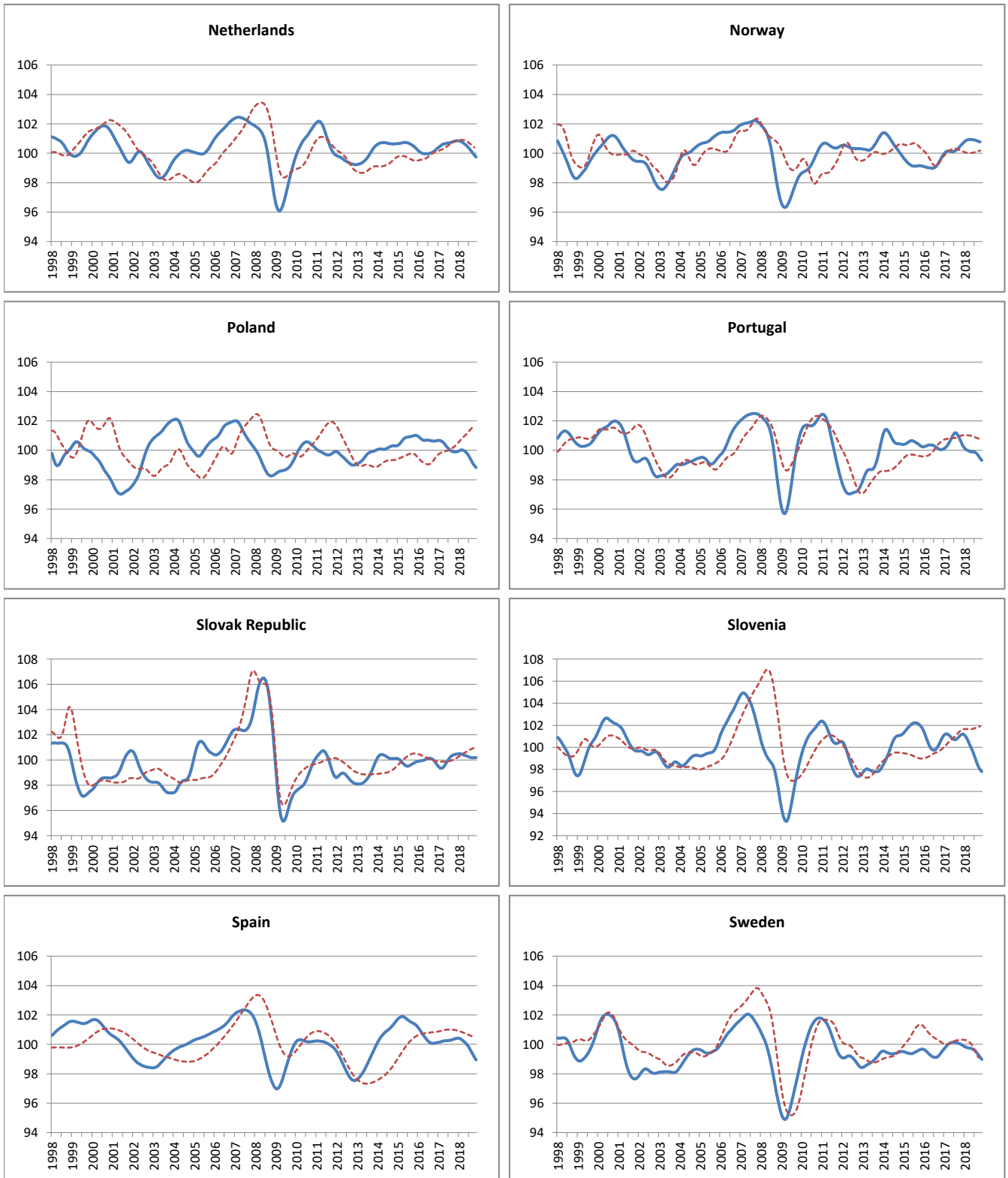
----- Reference series — Composite leading indicators



	Czech Republic	Denmark	Estonia	Finland	Greece	Hungary	Ireland	Luxembourg
Amplitude adjusted (long term average =100)								
December 2017	99.87	100.29	101.86	102.16	100.21	100.28	101.03	n.a
January 2018	99.82	100.28	101.51	102.08	100.21	100.26	100.78	n.a
February 2018	99.73	100.25	101.14	101.97	100.19	100.26	100.48	n.a
March 2018	99.64	100.24	100.67	101.81	100.12	100.26	100.16	n.a
April 2018	99.55	100.25	100.23	101.58	100.01	100.28	99.84	n.a
May 2018	99.49	100.26	99.82	101.31	99.85	100.32	99.55	n.a
June 2018	99.45	100.23	99.53	101.00	99.65	100.39	99.27	n.a
July 2018	99.45	100.18	99.24	100.66	99.41	100.43	98.99	n.a
August 2018	99.49	100.12	98.92	100.30	99.13	100.46	98.70	n.a
September 2018	99.59	100.07	98.60	99.90	98.83	100.48	98.45	n.a
October 2018	99.69	100.04	98.32	99.47	98.55	100.50	98.27	n.a
November 2018	99.62	100.02	98.17	99.02	98.42	100.53	98.16	n.a
Month on Month growth rate (%)								
December 2017	-0.02	0.00	-0.28	-0.03	0.02	-0.03	-0.20	-
January 2018	-0.06	-0.02	-0.35	-0.07	0.00	-0.02	-0.25	-
February 2018	-0.09	-0.02	-0.36	-0.11	-0.02	0.00	-0.29	-
March 2018	-0.10	-0.01	-0.46	-0.16	-0.07	0.00	-0.32	-
April 2018	-0.09	0.01	-0.45	-0.22	-0.11	0.02	-0.32	-
May 2018	-0.06	0.01	-0.40	-0.27	-0.16	0.04	-0.29	-
June 2018	-0.04	-0.03	-0.30	-0.31	-0.20	0.06	-0.28	-
July 2018	-0.01	-0.05	-0.29	-0.34	-0.23	0.05	-0.28	-
August 2018	0.05	-0.06	-0.32	-0.36	-0.29	0.03	-0.29	-
September 2018	0.09	-0.05	-0.32	-0.40	-0.30	0.01	-0.26	-
October 2018	0.11	-0.03	-0.28	-0.44	-0.28	0.02	-0.18	-
November 2018	-0.08	-0.02	-0.16	-0.45	-0.13	0.03	-0.11	-
Year on Year growth rate (%)								
December 2017	-0.10	0.23	-0.48	0.67	-0.04	0.74	-0.24	-
January 2018	-0.20	0.12	-0.82	0.46	0.14	0.53	-0.78	-
February 2018	-0.30	0.04	-1.16	0.25	0.14	0.37	-1.28	-
March 2018	-0.40	0.01	-1.59	0.01	0.00	0.24	-1.70	-
April 2018	-0.46	0.03	-1.99	-0.29	-0.21	0.15	-2.04	-
May 2018	-0.49	0.04	-2.37	-0.63	-0.47	0.11	-2.28	-
June 2018	-0.50	-0.01	-2.67	-1.02	-0.75	0.11	-2.48	-
July 2018	-0.47	-0.09	-2.95	-1.41	-1.00	0.11	-2.70	-
August 2018	-0.41	-0.16	-3.30	-1.82	-1.23	0.10	-2.91	-
September 2018	-0.32	-0.21	-3.66	-2.24	-1.45	0.10	-3.05	-
October 2018	-0.21	-0.25	-3.89	-2.68	-1.66	0.14	-3.08	-
November 2018	-0.28	-0.27	-3.90	-3.11	-1.76	0.21	-3.03	-

OTHER OECD COUNTRIES

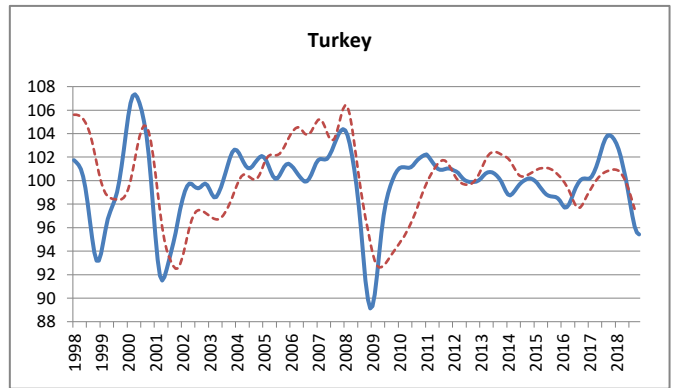
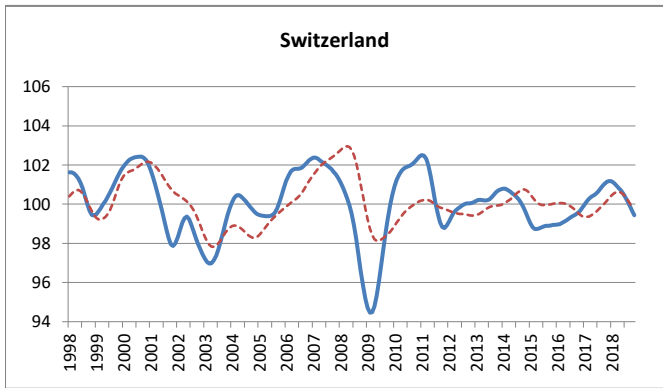
----- Reference series — Composite leading indicators



	Netherlands	Norway	Poland	Portugal	Slovak Republic	Slovenia	Spain	Sweden
Amplitude adjusted (long term average =100)								
December 2017	100.85	100.70	99.91	100.28	100.48	101.20	100.42	99.91
January 2018	100.84	100.80	99.96	100.12	100.50	101.10	100.41	99.84
February 2018	100.80	100.90	100.01	100.02	100.48	100.88	100.37	99.79
March 2018	100.74	100.92	100.03	99.99	100.44	100.57	100.29	99.76
April 2018	100.66	100.94	99.98	99.93	100.39	100.22	100.19	99.74
May 2018	100.56	100.94	99.88	99.89	100.34	99.86	100.07	99.71
June 2018	100.44	100.92	99.74	99.88	100.28	99.46	99.92	99.64
July 2018	100.31	100.89	99.54	99.87	100.23	99.04	99.74	99.56
August 2018	100.17	100.85	99.33	99.78	100.19	98.62	99.54	99.43
September 2018	100.02	100.81	99.13	99.62	100.17	98.24	99.33	99.29
October 2018	99.88	100.77	98.96	99.45	100.18	97.96	99.13	99.13
November 2018	99.74		98.84	99.32	100.19	97.81	98.94	98.97
Month on Month growth rate (%)								
December 2017	0.01	0.12	0.02	-0.23	0.03	0.04	0.02	-0.07
January 2018	-0.01	0.10	0.05	-0.16	0.02	-0.10	-0.01	-0.07
February 2018	-0.04	0.09	0.06	-0.09	-0.01	-0.22	-0.04	-0.05
March 2018	-0.06	0.02	0.01	-0.04	-0.05	-0.31	-0.08	-0.03
April 2018	-0.08	0.02	-0.05	-0.06	-0.05	-0.35	-0.10	-0.02
May 2018	-0.10	0.00	-0.10	-0.04	-0.05	-0.37	-0.12	-0.03
June 2018	-0.12	-0.02	-0.14	0.00	-0.05	-0.39	-0.15	-0.06
July 2018	-0.13	-0.04	-0.19	-0.02	-0.06	-0.42	-0.18	-0.09
August 2018	-0.14	-0.04	-0.21	-0.09	-0.04	-0.43	-0.20	-0.12
September 2018	-0.15	-0.04	-0.21	-0.16	-0.01	-0.38	-0.21	-0.15
October 2018	-0.15	-0.04	-0.17	-0.17	0.00	-0.28	-0.20	-0.16
November 2018	-0.14		-0.13	-0.13	0.01	-0.16	-0.19	-0.15
Year on Year growth rate (%)								
December 2017	0.53	0.86	-0.75	0.21	0.87	0.26	0.31	0.34
January 2018	0.42	0.79	-0.71	-0.02	1.07	-0.05	0.27	0.11
February 2018	0.29	0.78	-0.64	-0.21	1.16	-0.33	0.20	-0.08
March 2018	0.15	0.76	-0.57	-0.39	1.10	-0.60	0.09	-0.23
April 2018	0.02	0.80	-0.52	-0.64	0.92	-0.82	-0.04	-0.33
May 2018	-0.11	0.83	-0.47	-0.92	0.68	-1.02	-0.18	-0.42
June 2018	-0.25	0.81	-0.46	-1.14	0.40	-1.28	-0.34	-0.50
July 2018	-0.39	0.74	-0.52	-1.30	0.14	-1.64	-0.52	-0.58
August 2018	-0.56	0.63	-0.64	-1.38	-0.07	-2.09	-0.74	-0.68
September 2018	-0.74	0.49	-0.79	-1.38	-0.19	-2.60	-0.98	-0.79
October 2018	-0.92	0.33	-0.93	-1.30	-0.24	-3.03	-1.22	-0.91
November 2018	-1.09		-1.05	-1.18	-0.26	-3.32	-1.45	-1.01

OTHER OECD COUNTRIES

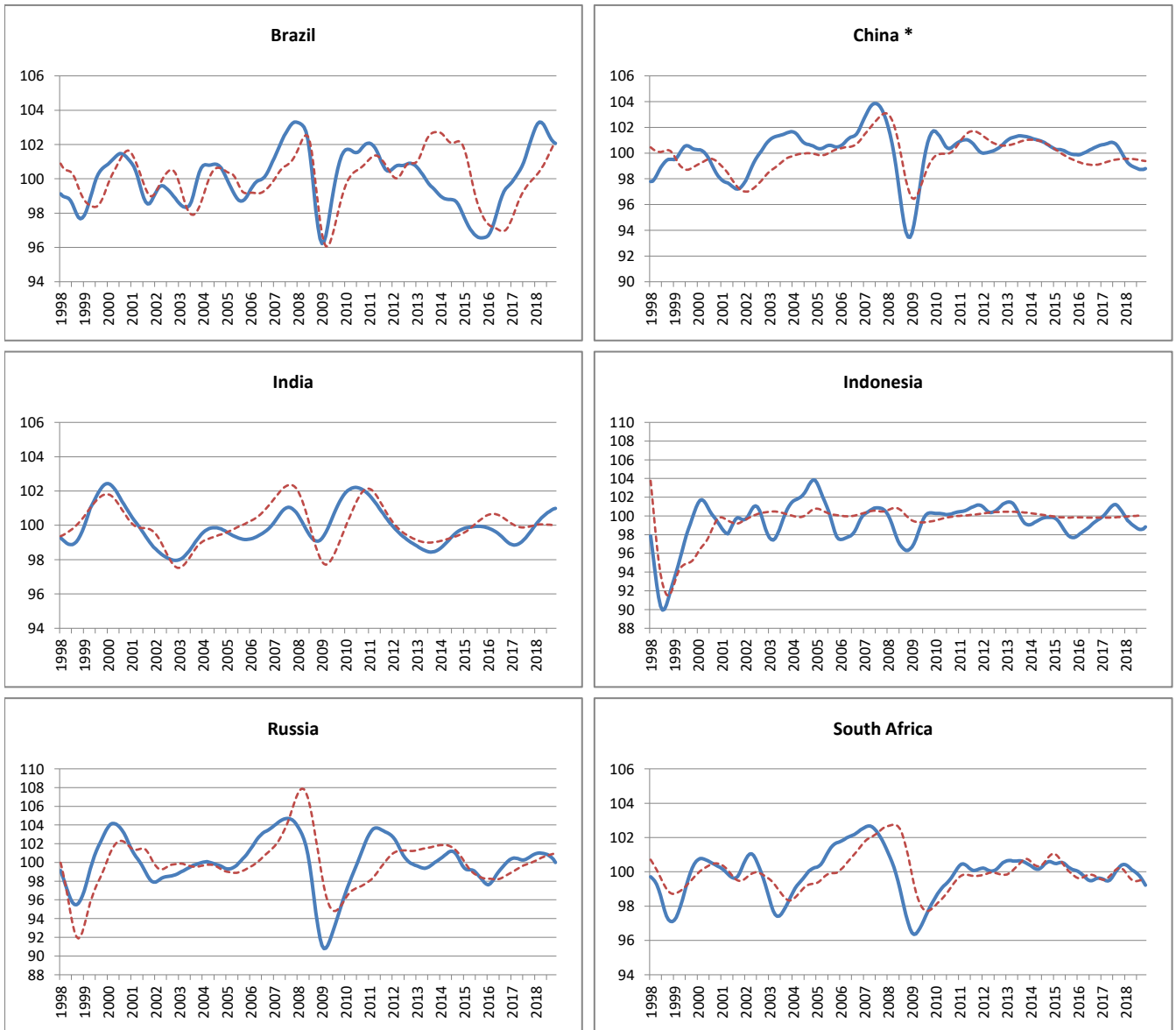
----- Reference series — Composite leading indicators



	Switzerland	Turkey
Amplitude adjusted (long term average =100)		
December 2017	101.18	103.50
January 2018	101.16	103.17
February 2018	101.09	102.68
March 2018	100.97	102.00
April 2018	100.84	101.16
May 2018	100.70	100.21
June 2018	100.54	99.19
July 2018	100.34	98.10
August 2018	100.13	97.01
September 2018	99.90	96.11
October 2018	99.67	95.59
November 2018	99.44	95.43
Month on Month growth rate (%)		
December 2017	0.04	-0.24
January 2018	-0.02	-0.32
February 2018	-0.07	-0.47
March 2018	-0.11	-0.66
April 2018	-0.13	-0.82
May 2018	-0.14	-0.94
June 2018	-0.16	-1.02
July 2018	-0.19	-1.10
August 2018	-0.21	-1.11
September 2018	-0.23	-0.92
October 2018	-0.24	-0.55
November 2018	-0.23	-0.16
Year on Year growth rate (%)		
December 2017	1.37	3.34
January 2018	1.17	3.00
February 2018	0.93	2.31
March 2018	0.68	1.28
April 2018	0.46	0.00
May 2018	0.25	-1.50
June 2018	0.01	-3.13
July 2018	-0.30	-4.80
August 2018	-0.65	-6.32
September 2018	-1.02	-7.43
October 2018	-1.37	-7.98
November 2018	-1.68	-8.02

MAJOR NON MEMBER COUNTRIES

----- Reference series — Composite leading indicators



* The reference series for China is the value added of industry ,at 1995 constant prices,100 million Yuan.

	Brasil	China	India	Indonesia	Russia	South Africa
Amplitude adjusted (long term average =100)						
December 2017	102.71	99.76	99.87	100.21	100.84	100.43
January 2018	103.00	99.50	100.02	99.88	100.94	100.41
February 2018	103.21	99.28	100.17	99.53	100.99	100.34
March 2018	103.31	99.12	100.31	99.33	101.01	100.25
April 2018	103.29	99.00	100.43	99.13	101.00	100.14
May 2018	103.16	98.92	100.55	98.95	100.97	100.05
June 2018	102.95	98.85	100.65	98.79	100.91	99.97
July 2018	102.71	98.79	100.74	98.66	100.82	99.87
August 2018	102.47	98.74	100.81	98.57	100.70	99.76
September 2018	102.27	98.72	100.88	98.55	100.54	99.60
October 2018	102.14	98.73	100.95	98.63	100.32	99.42
November 2018	102.07	98.78	100.99	98.82	100.01	99.23
Month on Month growth rate (%)						
December 2017	0.32	-0.28	0.16	-0.31	0.12	0.03
January 2018	0.28	-0.26	0.15	-0.33	0.10	-0.02
February 2018	0.21	-0.22	0.15	-0.36	0.05	-0.07
March 2018	0.10	-0.16	0.14	-0.20	0.02	-0.10
April 2018	-0.02	-0.12	0.13	-0.20	-0.01	-0.11
May 2018	-0.13	-0.08	0.11	-0.18	-0.03	-0.09
June 2018	-0.20	-0.07	0.10	-0.16	-0.06	-0.08
July 2018	-0.24	-0.06	0.09	-0.13	-0.09	-0.09
August 2018	-0.23	-0.05	0.08	-0.09	-0.12	-0.12
September 2018	-0.19	-0.02	0.07	-0.02	-0.16	-0.15
October 2018	-0.13	0.02	0.06	0.08	-0.22	-0.18
November 2018	-0.07	0.05	0.04	0.19	-0.31	-0.20
Year on Year growth rate (%)						
December 2017	3.05	-0.84	0.95	0.50	0.54	0.81
January 2018	3.19	-1.13	1.16	0.01	0.51	0.81
February 2018	3.24	-1.38	1.34	-0.54	0.51	0.80
March 2018	3.17	-1.58	1.47	-0.97	0.54	0.77
April 2018	2.97	-1.74	1.56	-1.43	0.59	0.68
May 2018	2.65	-1.87	1.61	-1.86	0.64	0.53
June 2018	2.23	-1.97	1.62	-2.23	0.63	0.32
July 2018	1.72	-2.00	1.60	-2.51	0.55	0.05
August 2018	1.16	-1.96	1.55	-2.61	0.36	-0.24
September 2018	0.60	-1.80	1.48	-2.49	0.09	-0.56
October 2018	0.11	-1.56	1.39	-2.17	-0.26	-0.88
November 2018	-0.31	-1.25	1.28	-1.69	-0.71	-1.17