

Finnish mobility rates 1988-1997

In the enclosed graphs (should preferably be printed out in colours), we present the first results of the Finnish mobility project, which is a part of the Nordic project lead by Anders Ekeland. We have not yet had the time to check and correct peculiarities and possible errors in the data, so they should not be spread outside the focus group. We have not at all analysed the data, but some preliminary observations could be made.

Mobility (narrow definition) declining relatively sharply 1989-92 and rising slowly after 1994 (graph 1). This corresponds to the sharp increase in unemployment 1990-93 and the a slow decline after that (graph 2)

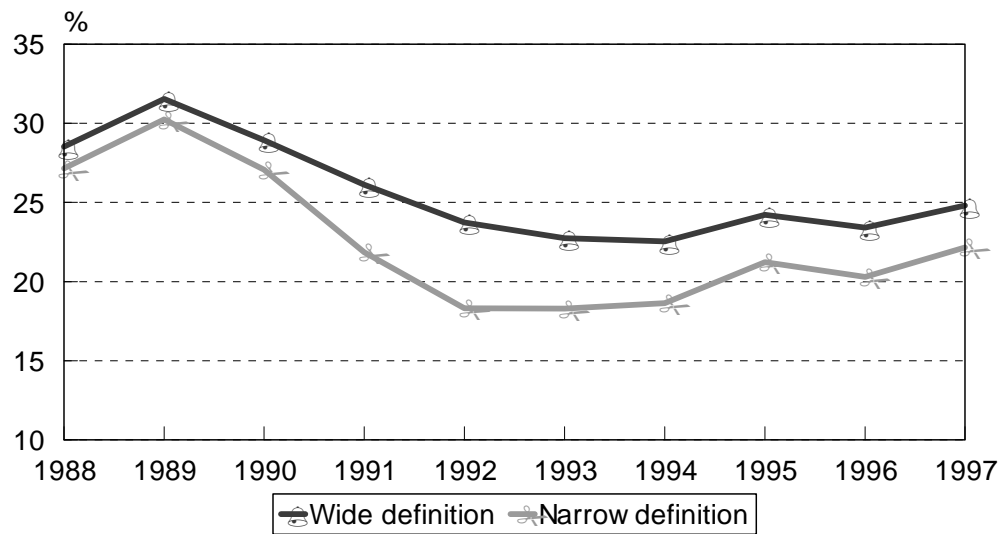
The ICT sector has the strongest narrow definition mobility according to graph 3b (although the sharp fluctuations have to be explained). Mobility is clearly lower in manufacturing than in services in the most recent years. The slight increase in mobility in recent years seems to be due to service sectors.

There seems to be a change in the gender pattern of mobility. Before 1990 women had lower mobility rates. Now, the mobility rates for women are higher (graph 4b)

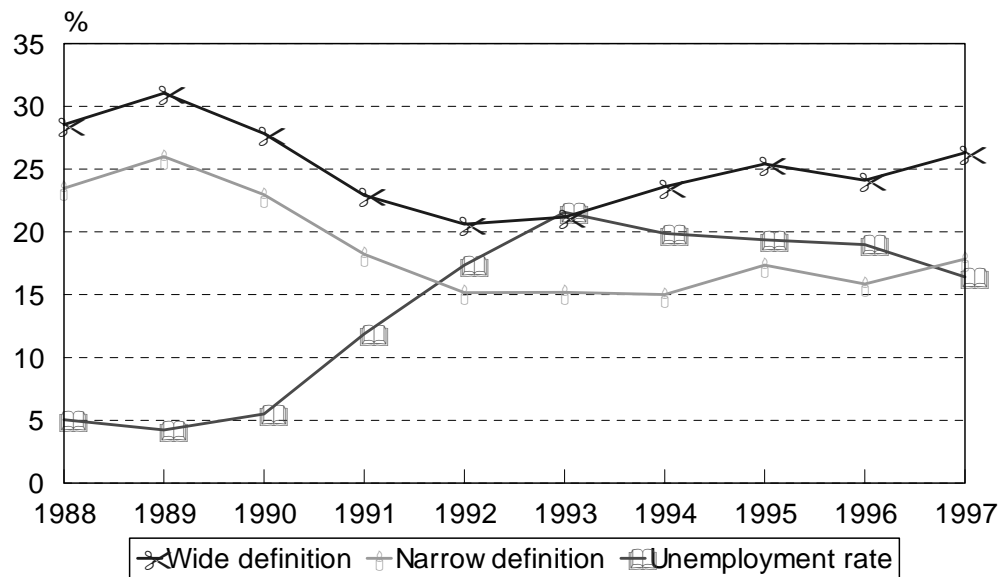
There is a clear connection between age and mobility. The higher the age, the lower mobility rates (graph 5b).

In more recent years there seems to be a connection between education and mobility rates (even if the sharp fluctuations for PhDs have to be explained) The higher the education, the higher the mobility rate (graph 6b)

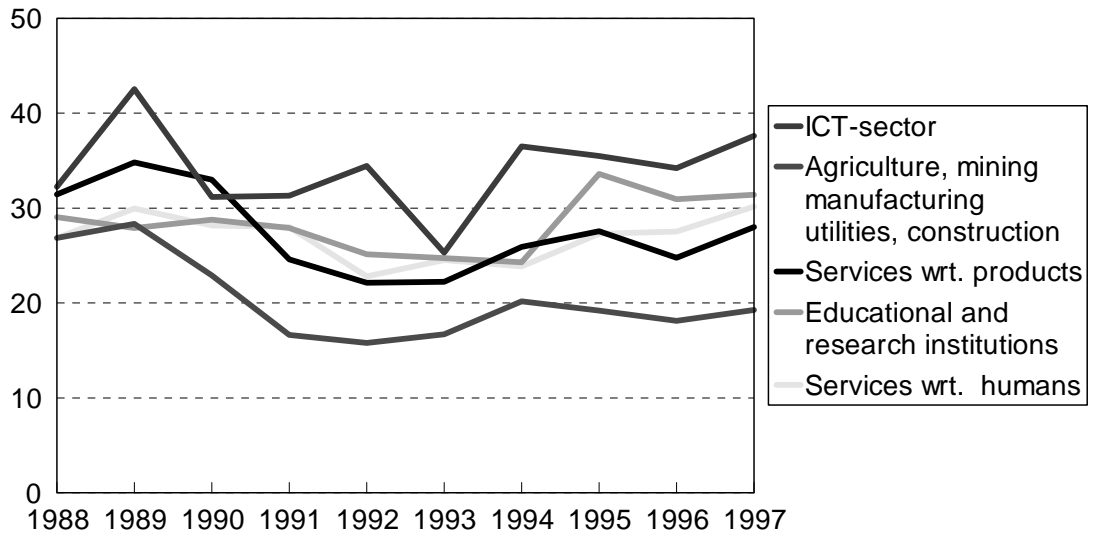
1. Inflow mobility rates 1988-1997



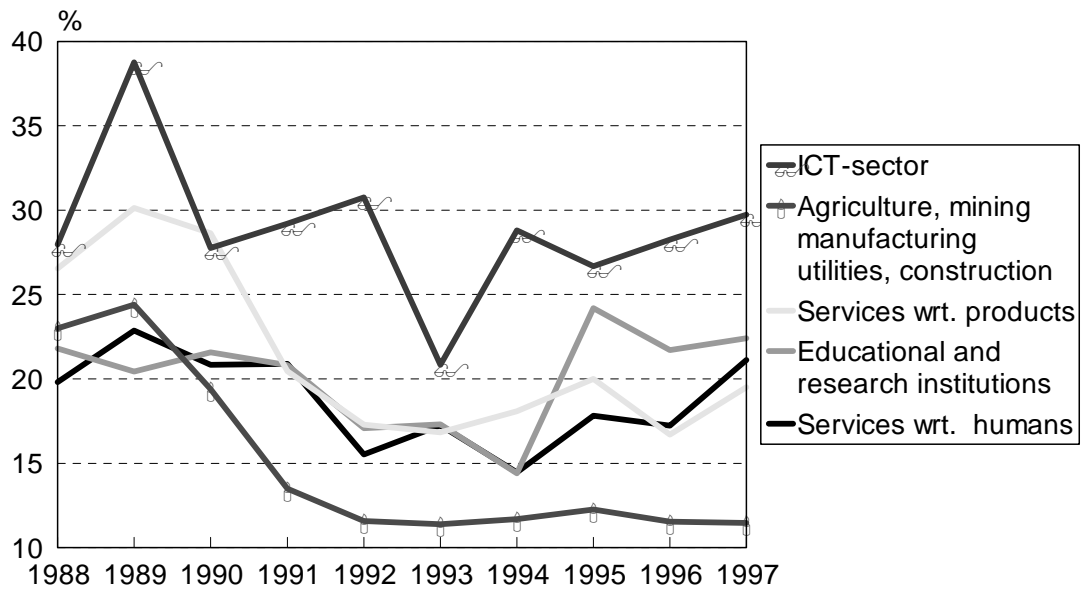
2. Inflow mobility rates and unemployment 1988-1997



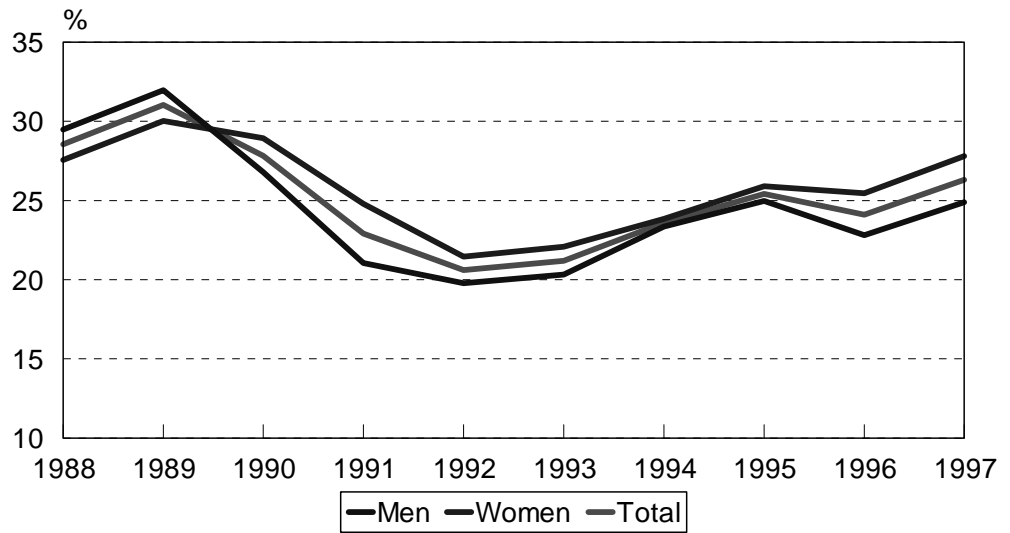
3a. Inflow mobility rates by sector 1988-1997, wide definition



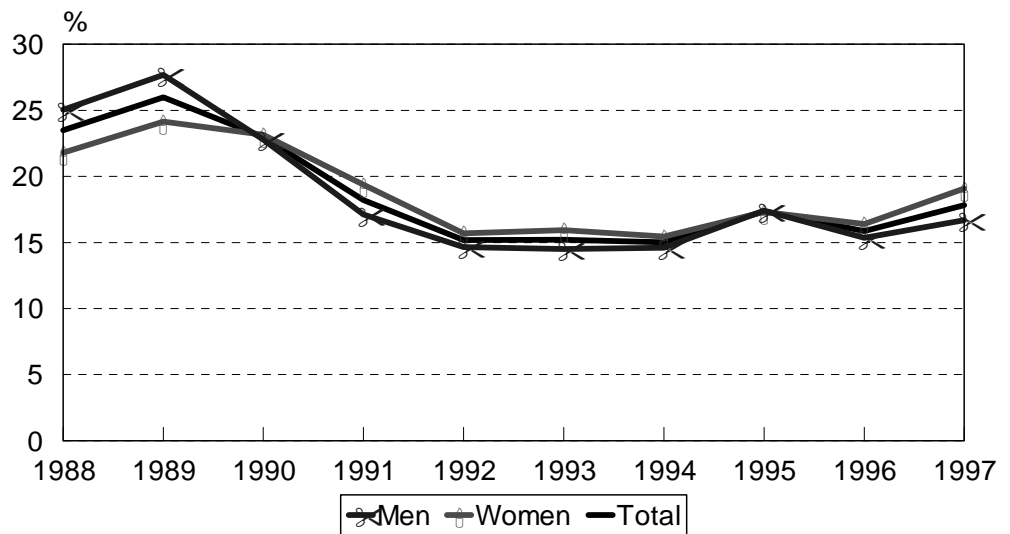
3b. Inflow mobility rates by sector 1988-1997, narrow definition



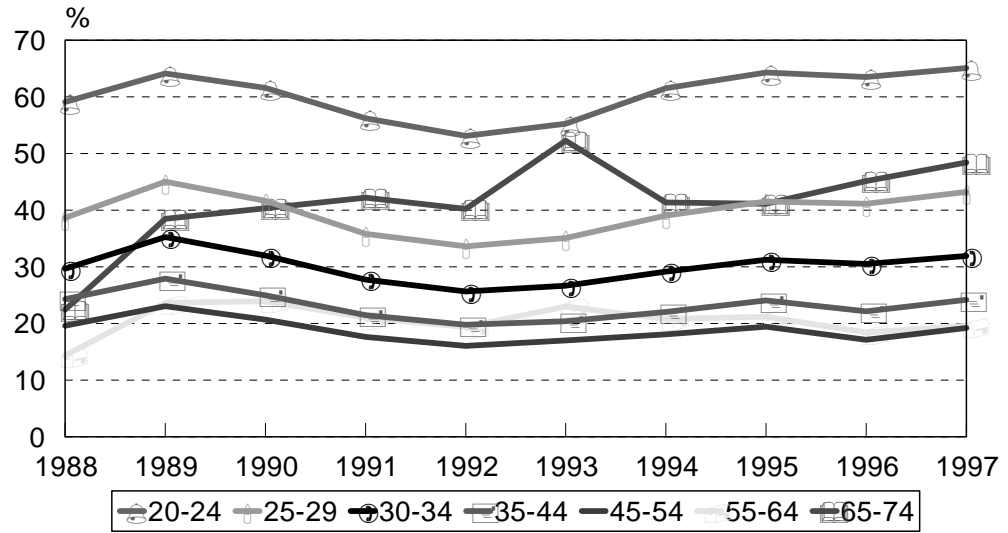
4a. Inflow mobility rates by gender 1988-1997, wide definition



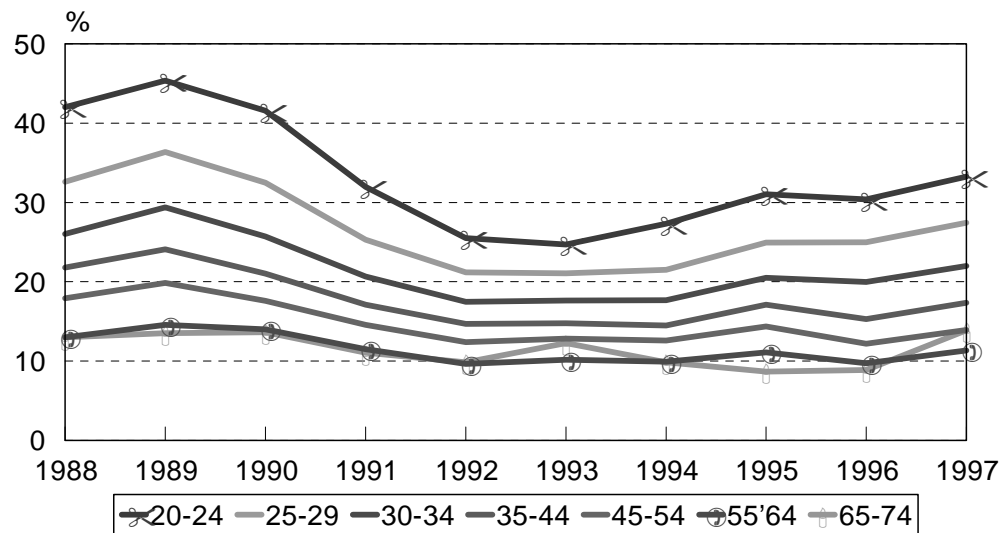
4b. Inflow mobility rates by gender 1988-1997, narrow definition



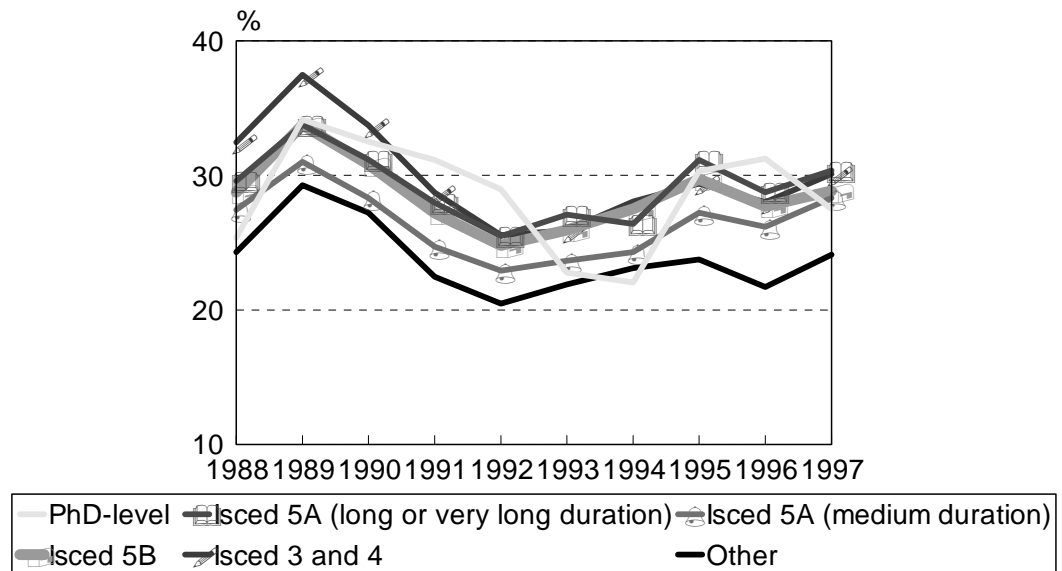
5a. Inflow mobility rates by age 1988-1997, wide definition



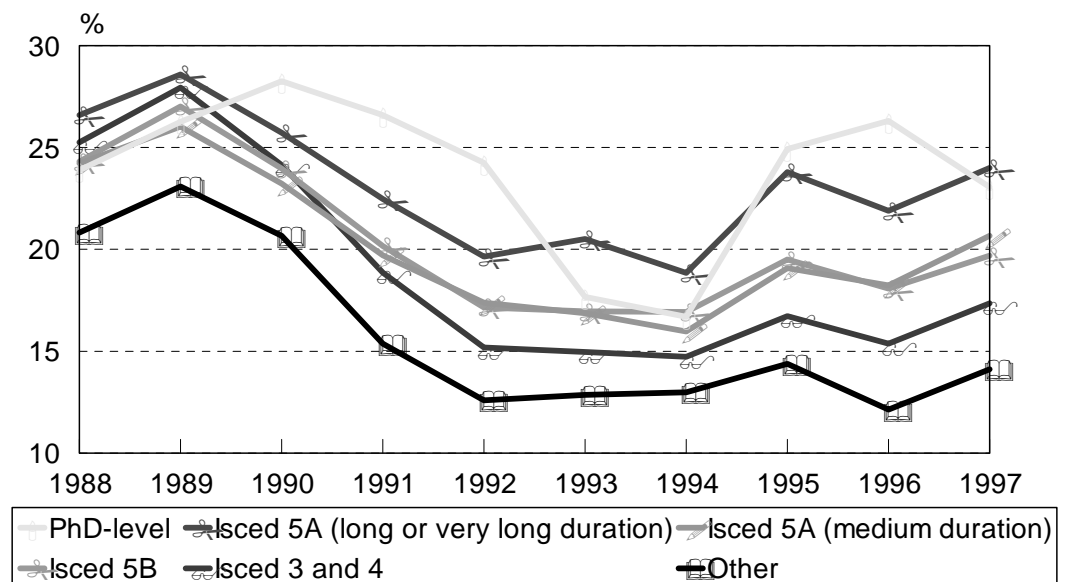
5b. Inflow mobility rates by age 1988-1997, narrow definition



6a. Inflow mobility rates by education 1988-1997, wide definition



6b. Inflow mobility rates by education 1988-1997, narrow definition



Notes:

1. Wide definition: Persons employed in year t, all sectors in previous year t-1 (including unemployed, education)
2. Narrow definition: Persons employed in both years t and t-1
3. Unemployment rates based on register data
4. Sector unknown excluded

ICT sectors= NACE 30,32, 642, 72

Agriculture, manufacturing...= NACE 01-45 (excl ICT)

Services (products)= NACE 50-74 (excl ICT and R&D institutions)

Educational and R&D institutions =NACE 73, 80

Services (humans) =NACE 75-95 (excl educational institutions)