

PEAK STEEL

an inquiry into the evolution of steel use

EXPERIENCES, CONSIDERATIONS, FORECASTS

Pierluigi Molajoni
April 2016

A SAMPLE OF PEAK STEEL EPISODES

	Absolute ACSU		ACSU per capita		Steel intensity of GDP	
	<u>Peak year</u>	<u>Million tons</u>	<u>Peak year</u>	<u>Kg per person</u>	<u>Peak year</u>	<u>Kg per kUSD*</u>
UK	1970	25.4	1970	455	1964	32.7
USA	1973	156.2	1973	737	1965	31.2
France	1973	25.6	1973	480	1969	25.3
Japan	1991	99.2	1973	826	1973	48.6
Italy	2006	38.8	2006	667	1970	22.3
Mexico	2006?	25.5	2006?	227	2006?	14.6
Germany	2007?	46.0	2007?	559	1970?	28.4
South Korea	2008?	61.0	2008?	1246	1995	49.2
Brazil	2013?	29.4	2010?	149	1974	14.3
China	2013?	765.8	2013?	564	1968	71.9

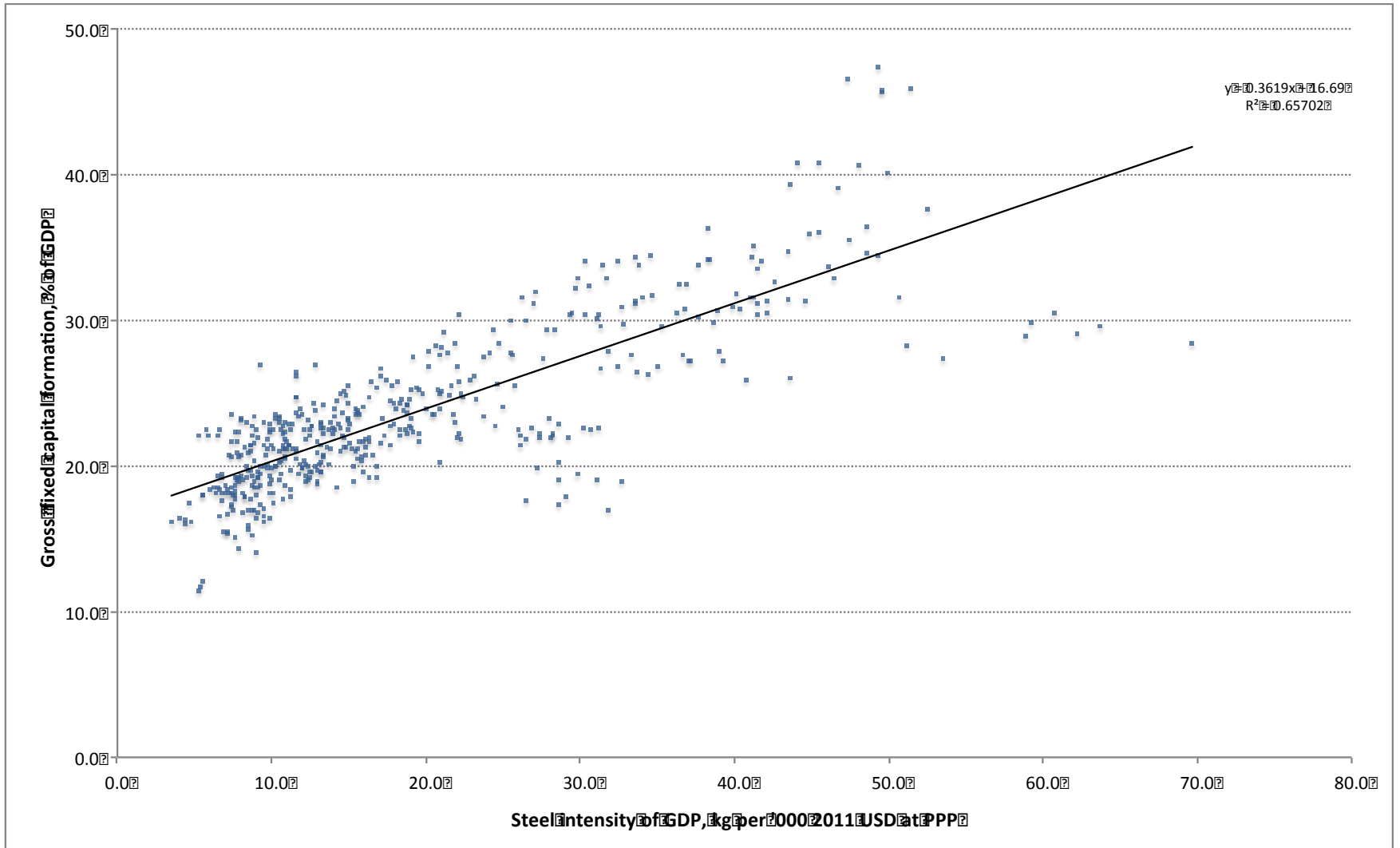
PEAK STEEL MAIN FEATURES

	<u>GDP per capita</u> ▼	<u>ACSU per capita</u> ▼	<u>ACSU/GDP</u> ▼
Early Peakers			
UK (pk 1970)	16.6	45.5	27.4
USA (pk 1973)	26.4	73.7	27.9
France (pk 1973)	20.8	48.0	23.1
Japan (pk 1991)	30.4	80.0	26.3
Pre-Great Recession Peakers			
Italy (pk 2006)	37.8	66.7	17.7
Mexico (pk 2006)	15.5	22.7	14.6
Germany (pk 2007)	40.7	55.9	13.7
S. Korea (pk 2008)	28.7	100.0 ▼	43.5
Post- Great Recession Peakers			
Brazil (pk 2010)	14.0	14.9	10.6
China (pk 2013)	11.5	56.4	49.0

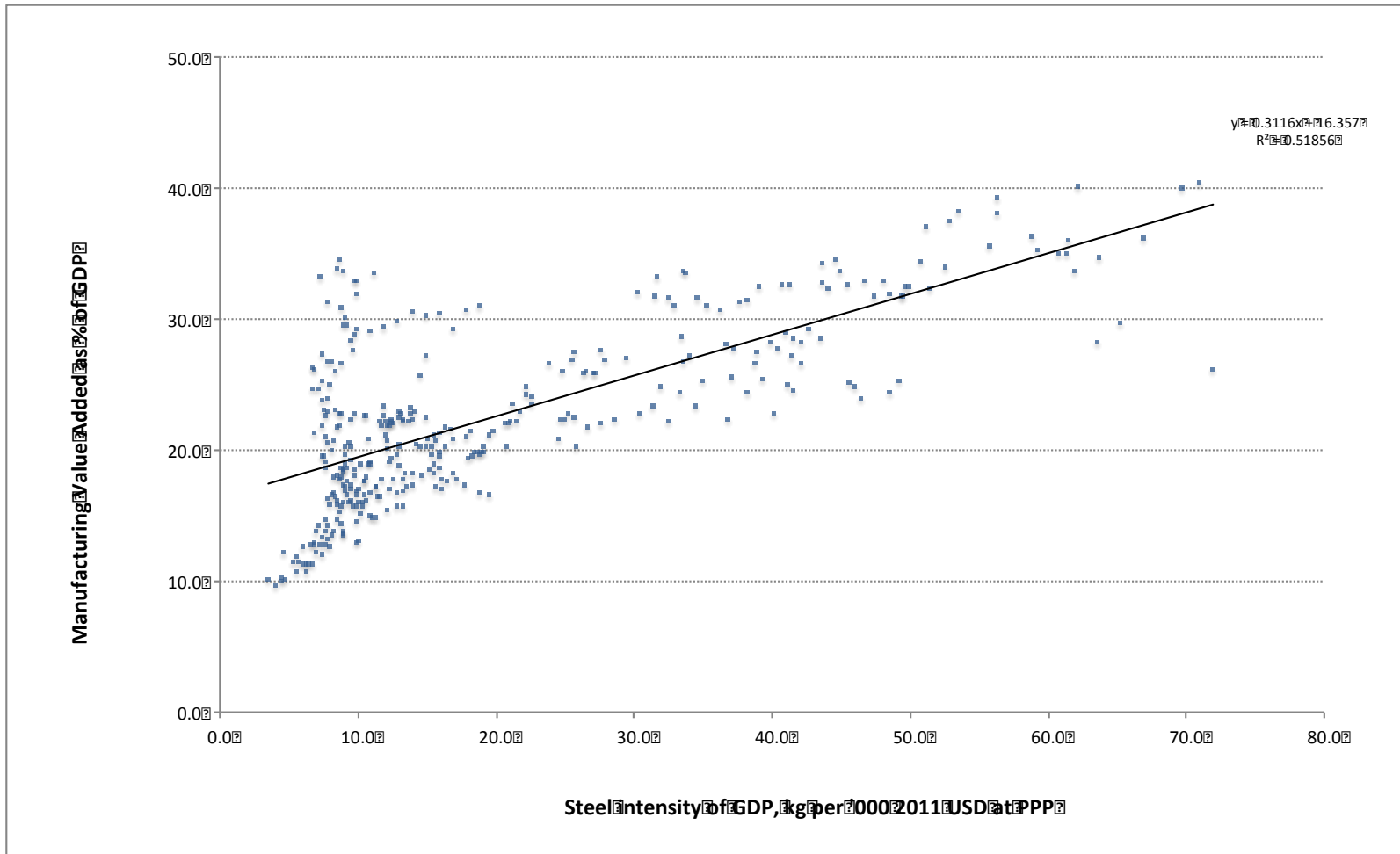
PEAK STEEL INTENSITY FEATURES

	<u>GFCF/GDP</u>	<u>Manuf. Value Added</u>	<u>Manuf. Exports</u>
Early Peakers			
UK (pk 1970)	22.1	25.0	80.1
USA (pk 1973)	23.3	25.0	62.2
France (pk 1973)	26.2	22.1	71.3
Japan (pk 1991)	31.6	25.8	96.0
Pre-Great Recession Peakers			
Italy (pk 2006)	21.5	17.4	84.8
Mexico (pk 2006)	21.9	18.1	76.0
Germany (pk 2007)	20.1	23.3	86.8
S. Korea (pk 2008)	31.4	28.6	86.9
Post- Great Recession Peakers			
Brazil (pk 2010)	19.5	16.2	37.1
China (pk 2013)	47.3	31.8	94.0

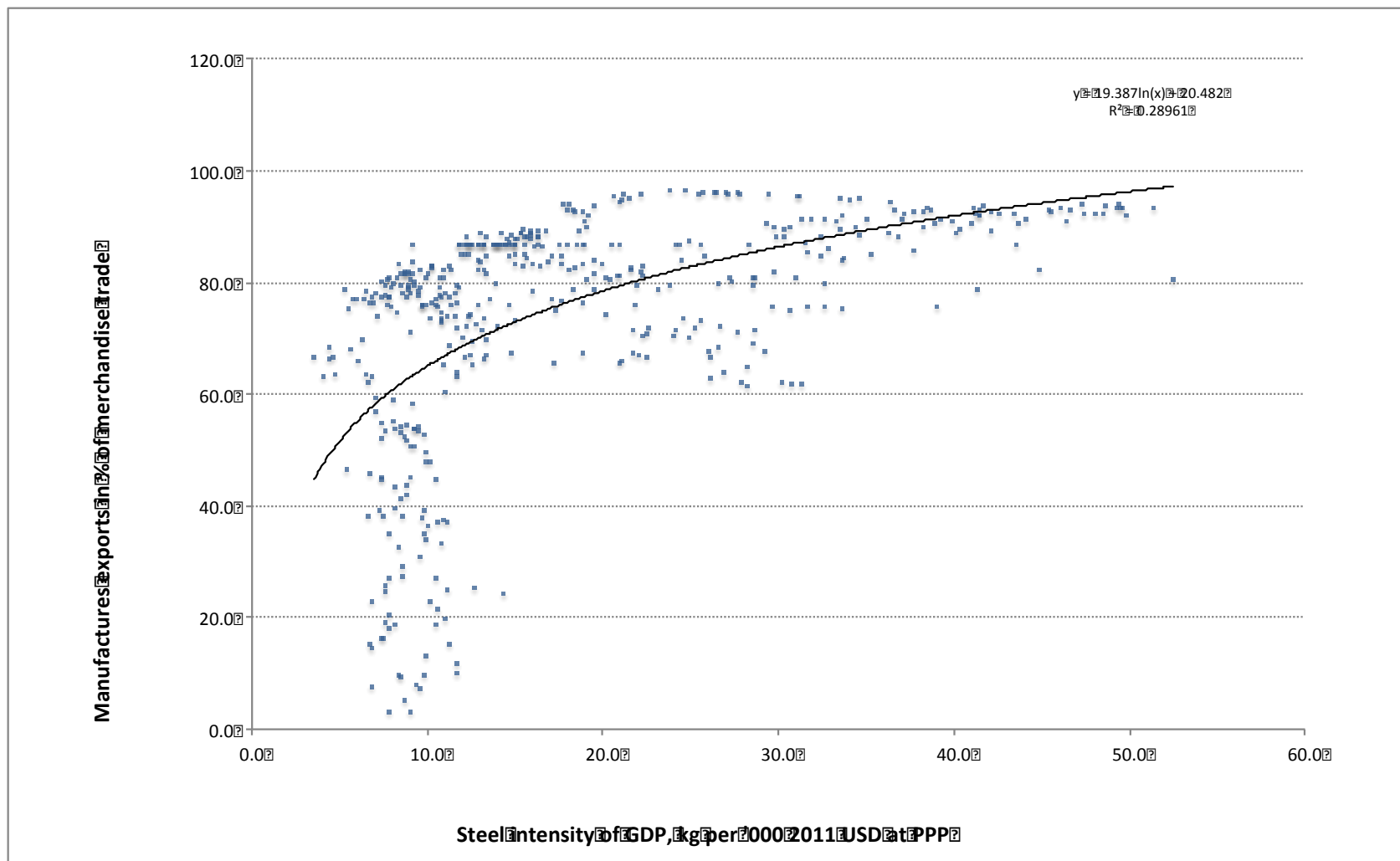
STEEL INTENSITY AND CAPITAL FORMATION



STEEL INTENSITY AND MANUFACTURING



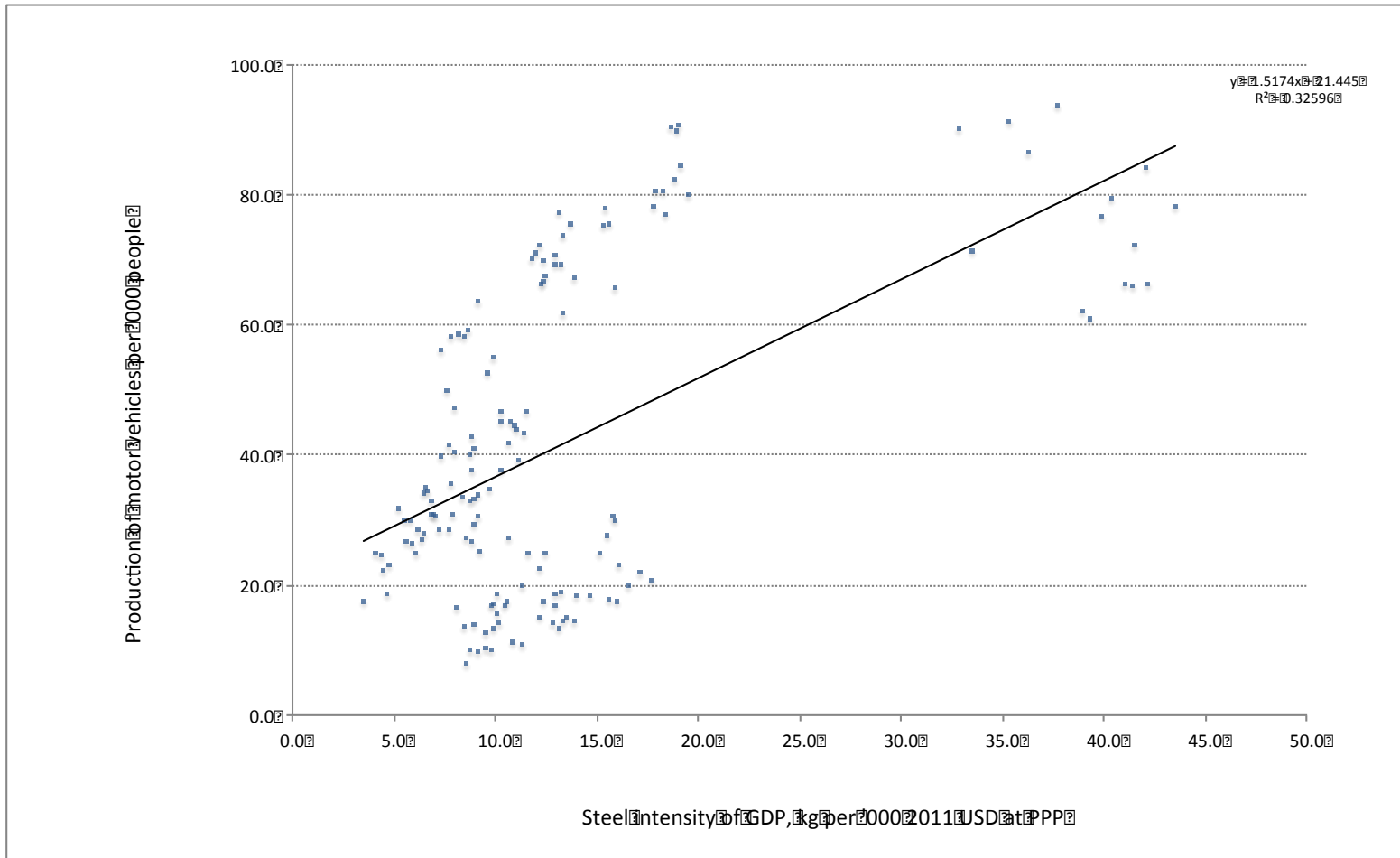
STEEL INTENSITY AND MANUFACTURING EXPORTS



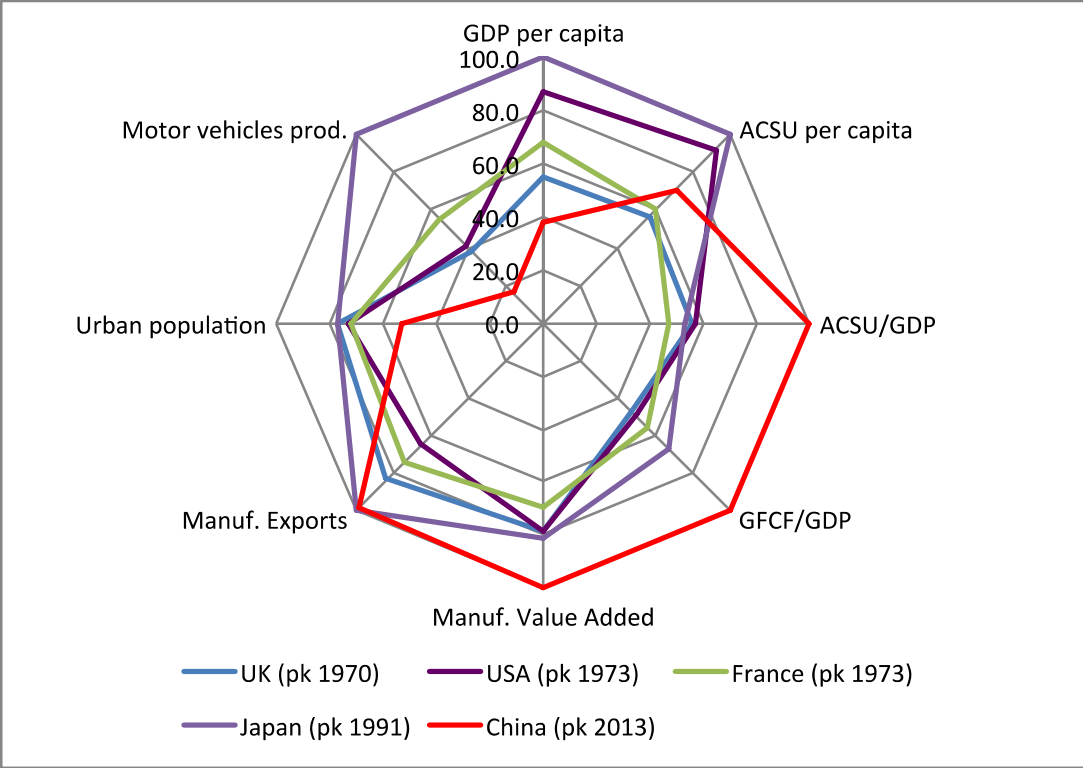
PEAK STEEL OTHER FEATURES

	<u>Urban population</u>	<u>Motor vehicles prod.</u>
Early Peakers		
UK (pk 1970)	77.1	37.7
USA (pk 1973)	73.6	40.6
France (pk 1973)	72.3	55.2
Japan (pk 1991)	77.5	100.0
Pre-Great Recession Peakers		
Italy (pk 2006)	67.9	20.8
Mexico (pk 2006)	76.6	18.2
Germany (pk 2007)	73.7	75.5
S. Korea (pk 2008)	81.7	78.2
Post- Great Recession Peakers		
Brazil (pk 2010)	84.3	17.3
China (pk 2013)	53.2	16.3

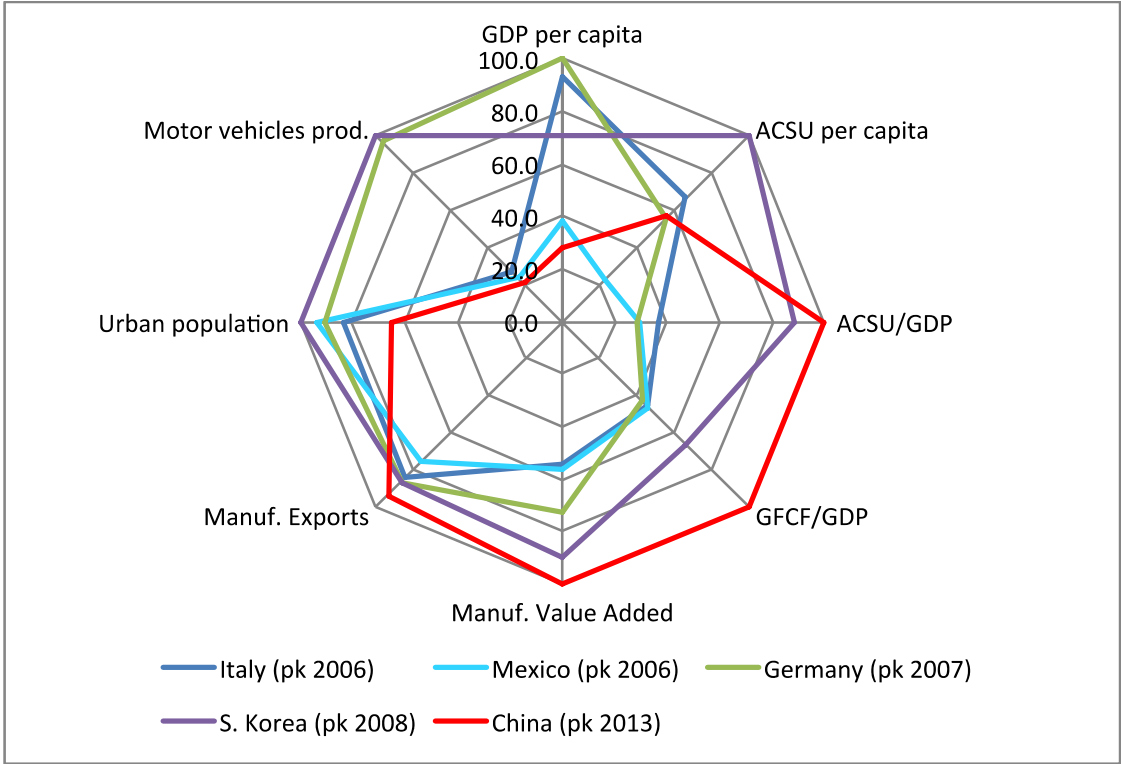
STEEL INTENSITY AND AUTOMOTIVE PRODUCTION



CHINA'S PEAK vs EARLY PEAKERS



CHINA'S PEAK vs LATE PEAKERS



POSSIBILITIES

- Expand the sample of countries
- Consider additional economic features:
 - quantity and quality of infrastructure
 - more detailed sectorial breakdowns
- Show a “movie”, not only a “still”