



***Integration between
Mining & Smelting Business and
Environmental Business***

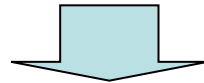
APRIL 2008

Masayuki NAKA

DOWA ECO-SYSTEM CO.,LTD.

Potential of Nonferrous Metal Industry

- Complex contents in raw materials
 - Various elements (valuable metals and impurities) in crude ore
- Handling toxic substances in safety
 - Valuable but toxic metals (ex. Pb, Cd)
 - Contents as impurities (ex. As)

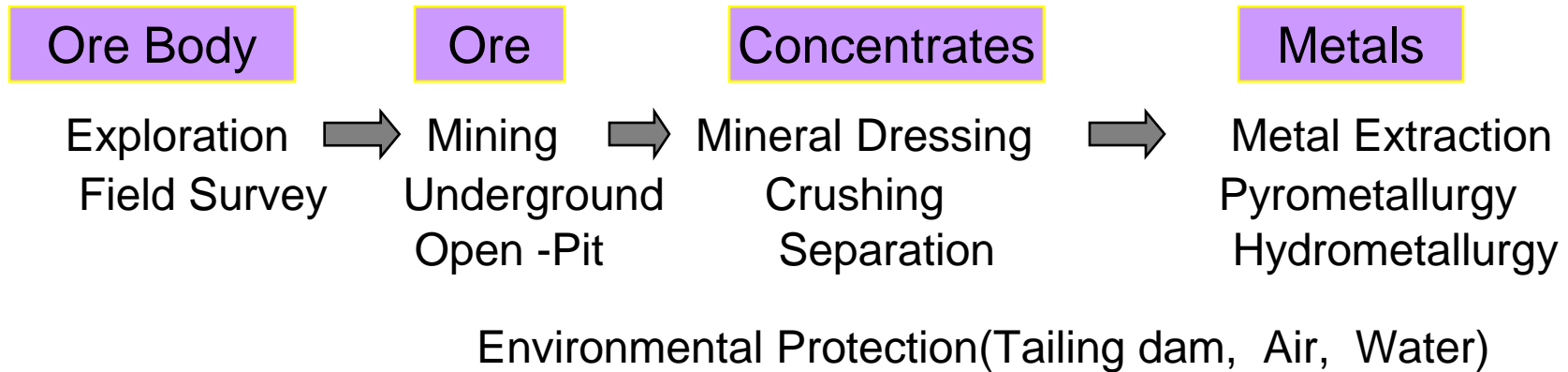


Unique role in environmental management & recycling
“The Anchor of Recycling” , “The Joint of Recycling Loop”

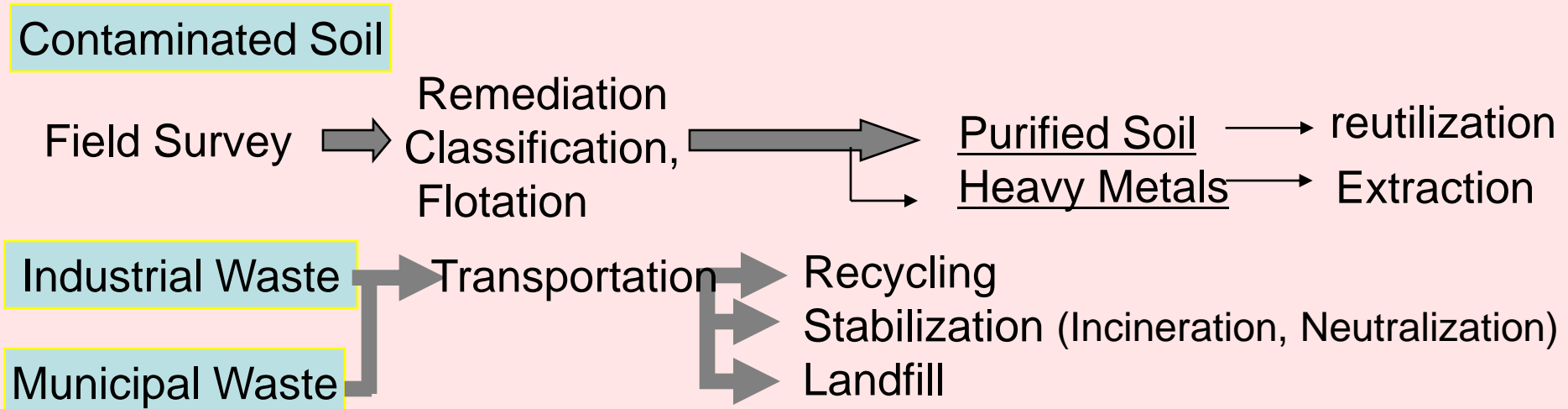
Dowa’s Business Model: Integration between
Metals Sector and Environmental Business Sector¹

From Mining & Smelting Business To Environmental Business

Mining Business



Waste Management Business



Industrial Waste Treatment



DOWA's Activity

- 4 incineration plants in Japan,
2 of the plants are located at mine sites.
- A new incinerator at Chiba

Total incinerator capacity

700,000t/Y → 1,000,000t/Y

Top capacity in Japan

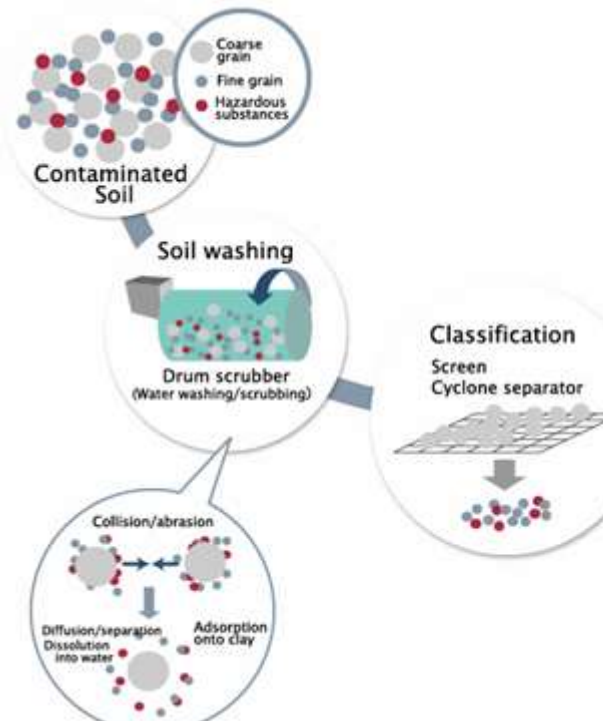


Soil Remediation Business

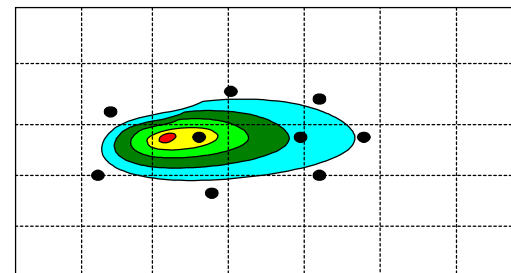
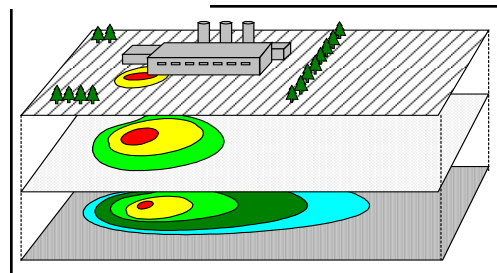
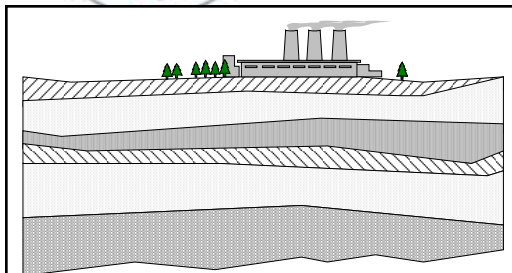
Investigation → Design → Implementation (Excavation, Treatment) → Monitoring

Top Japanese Company for treatment of Soil

contaminated with Heavy Metals

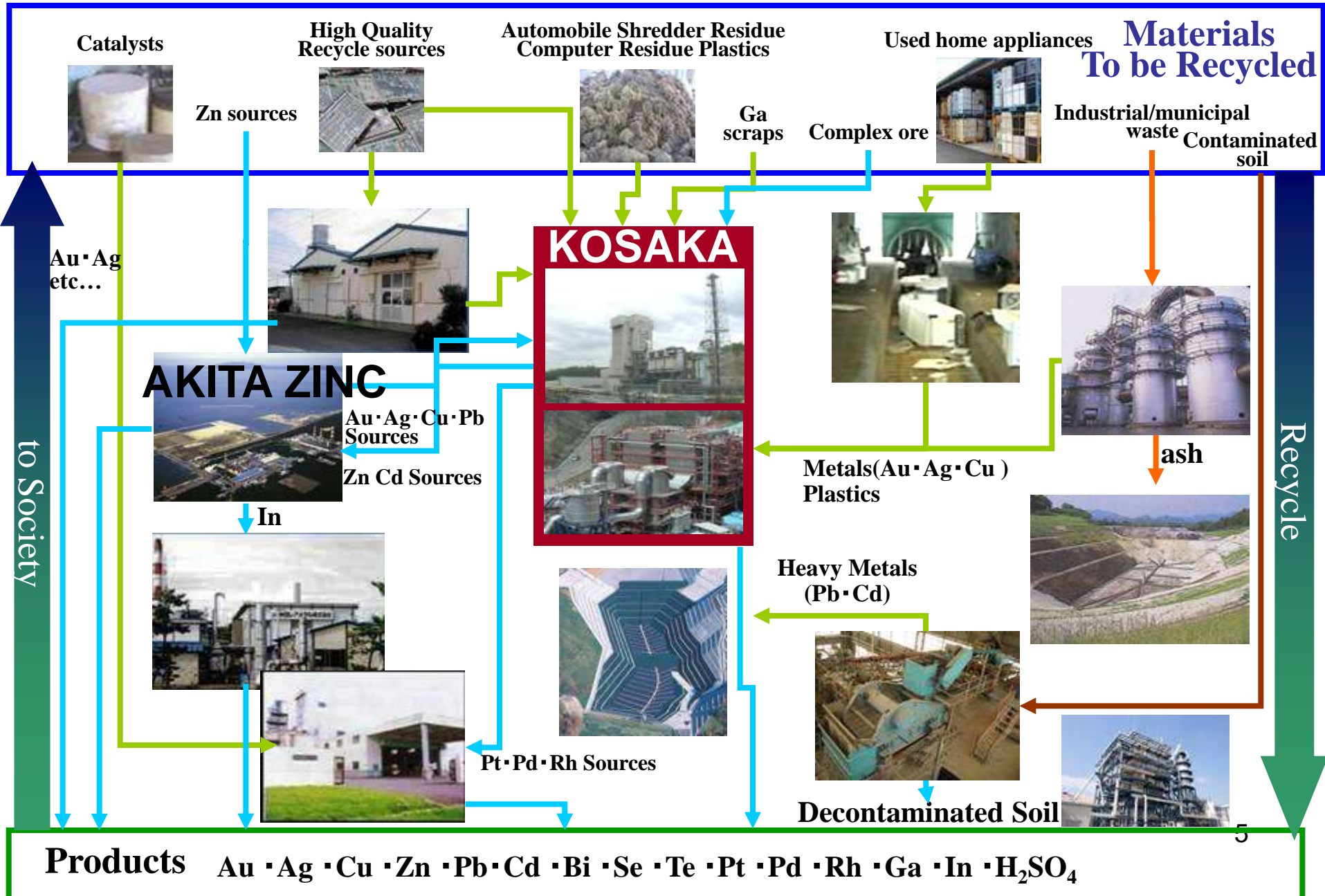


Achievement (2007.4)
Investigation :
1,500 sites
Implementation:
700 sites



Diffusion of Contaminants through underground water (image)

Dowa's Recycling Network



Collecting & Recycling Project for Small Domestic Appliances & IT related Equipments

- Since 2005 Dowa has implemented the project in cooperation with Tohoku University, the local government and METI Japan.
- Although these small WEEE contains valuables including rare metals, they are not recycled in general.

(The Japanese Recycling Law of Home Appliances covers 4 large appliances that are air conditioners, washing machines, TV-sets and not small ones.)

The Mascot for the project



Conclusion

DOWA develops core services to Metal Recycling, Waste Management and Soil Remediation by utilizing the mining, smelting and refining technologies.

The Age of Globalization requires us to operate with a global viewpoint about limited resources and fragile environments.

DOWA will Contribute to

- avoidance of worldwide Metal resources depletion,**
- establishing a sustainable sound material cycle society.**