



Conference on Resource Efficiency



MODULE 2 From waste to resources



ENVIRONMENTAL SERVICES ASSOCIATION

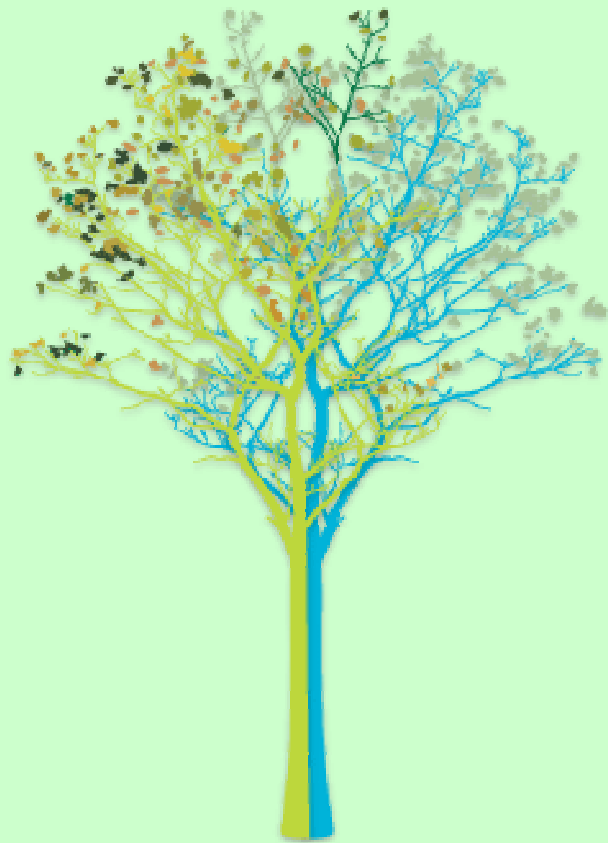


VEOLIA
ENVIRONMENTAL
SERVICES

OAKDENE HOLLINS

Research and Consulting

OECD–UNEP Conference on
Resource efficiency
23–25 April 2008, Paris



**Experience With Charges
As Economic Instrument
In Waste Management**

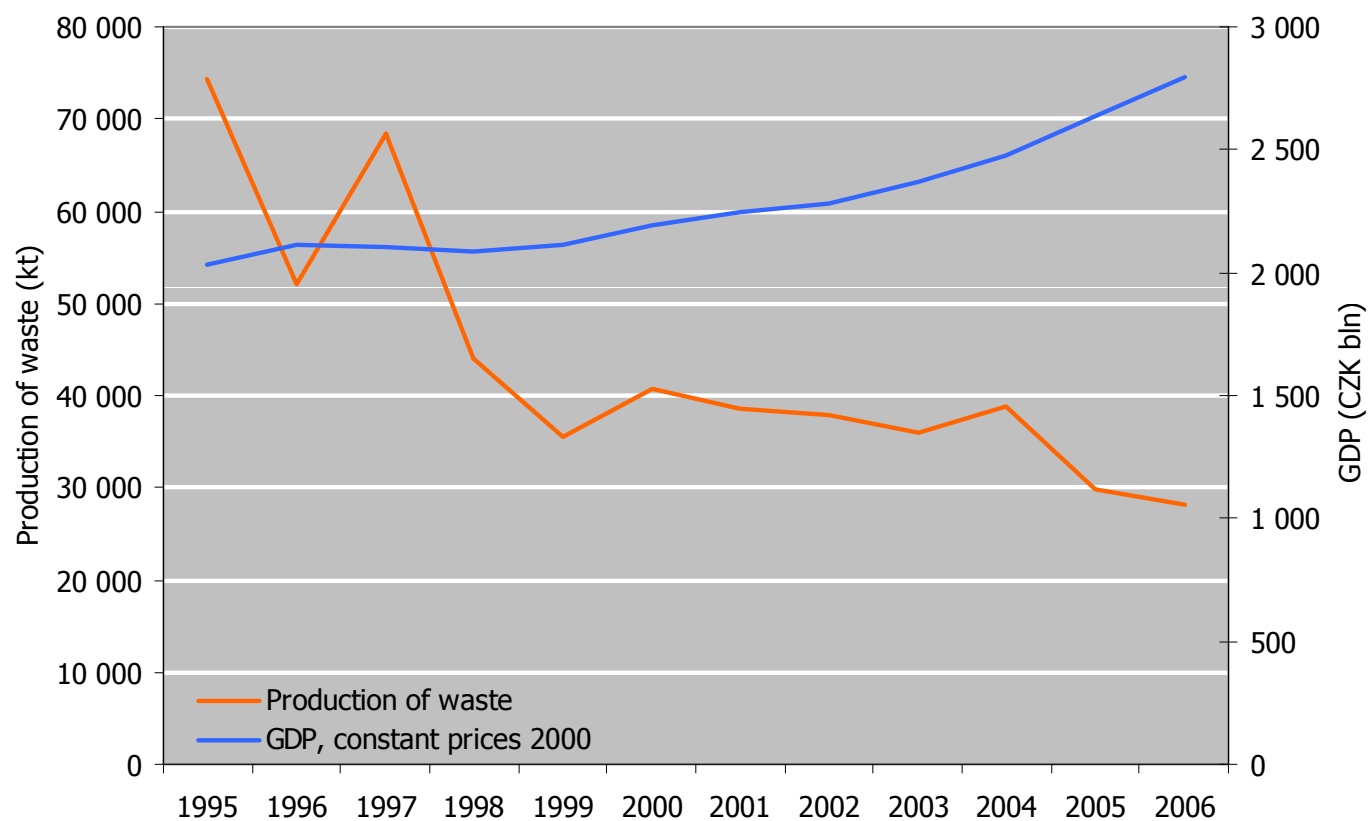
... CZECH REPUBLIC`S STORY

Rut Bízková

Deputy Minister

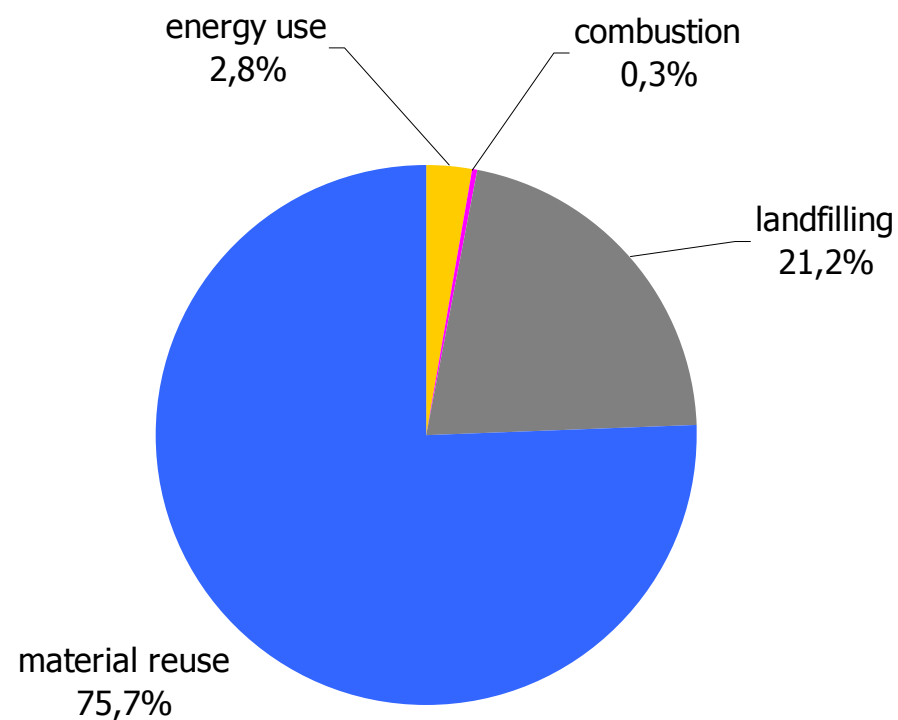
Ministry of the Environment of the Czech Republic

Production of Waste vs GDP, 1995 - 2006



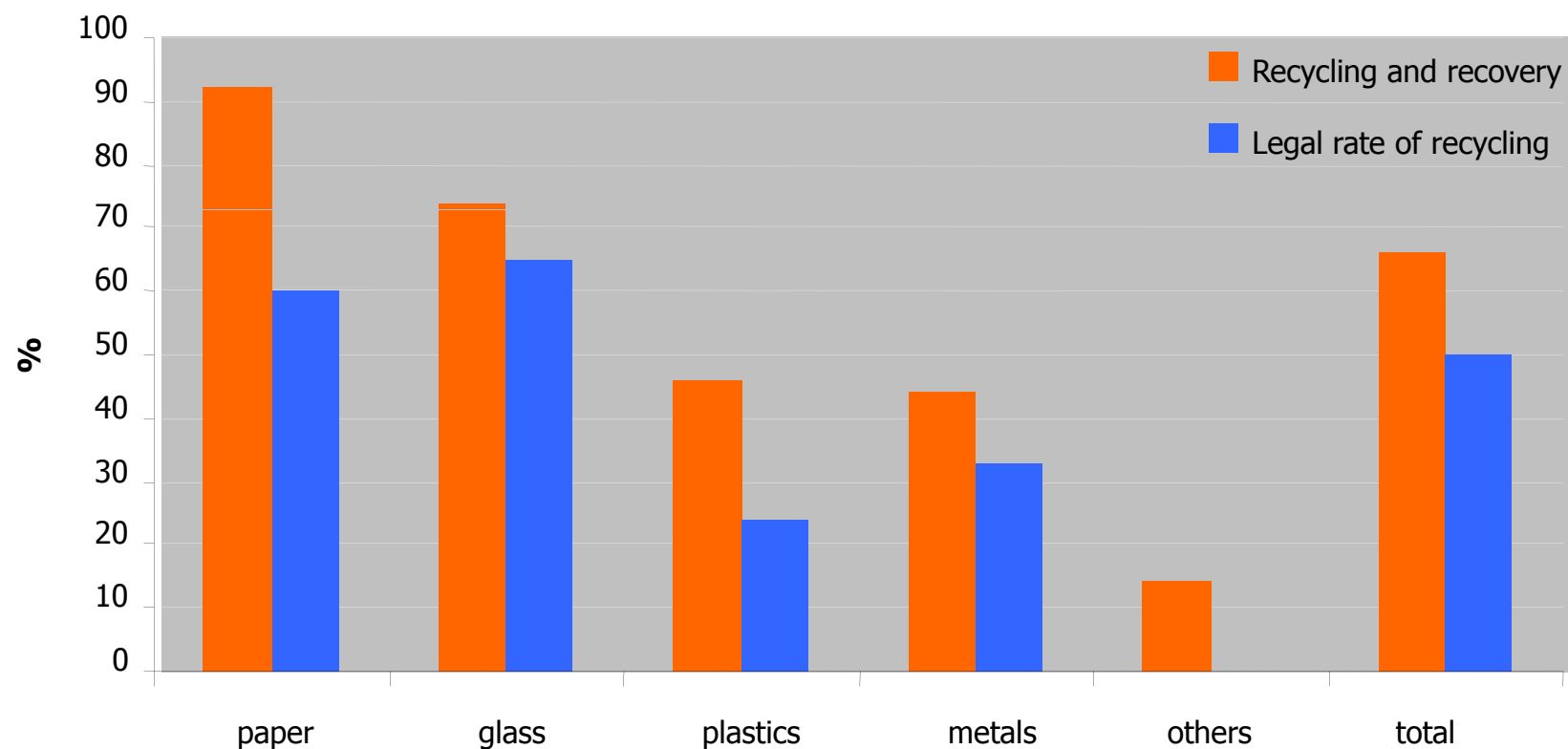
Source: *Statistical Environmental Yearbook of the Czech Republic*, Czech Statistical Office

Waste Management in the Czech Republic, 2006



Source: Czech Statistical Office

Rate of Recycling and Recovery of Packaging Waste in the Czech Republic, 2006



Source: Czech Statistical Office

1992 – Act on Waste Had Introduced Waste Management Charges in the Czech Republic

Tariff rate 1:

- Revenue from charges is income for municipality in whose cadaster the landfill is located (compensation)
- Charge
 - CZK 10 – 40 per tonne (by category)
 - CZK 250 per tonne of hazardous waste
- total revenue: about CZK 500 mio annually – for municipalities in whose cadaster the landfill is located

Tariff rate 2:

- Depositing waste in a landfill insecurity (by requirements of Act, possibility of deferred payment and in consequence the remission of 60 % charge)
- Amount charge
 - CZK 10 – 640 per tonne (by category)
 - CZK 3 000 – 5 000 per tonne of hazardous waste
- Total revenue: about CZK 600 mio in 1993 and 1994

Modification of Charges Since 1998

Charges for depositing of waste (in a landfill):

Basic charge

- compensation of damage linked to landfill operation
- tariff rate (gradual growth from 1998 to 2008)
 - municipal waste and other waste: 20 – 400 CZK per tonne
 - hazardous waste: 200 – 1 400 CZK per tonne
- revenue is income for municipality in whose cadaster the landfill is located – about CZK 1 600 mio annually

Risk charge

- the risk component of the charge is paid only for hazardous waste
- tariff rate CZK 300 – 3 300 per tonne (gradual growth from 1998 to 2008)
- revenue about CZK 140 mio annually
- revenue is income of the State Environmental Fund

Modification of Charges Since 1998

Charge for system of collection, transportation, separation, recovery and disposal of municipal waste:

- The charge consists of two components, each part – maximum CZK 250 per tonne
- Charge is income of municipality; this charge is being used in about 80 % of municipalities

Charge for municipal waste treatment:

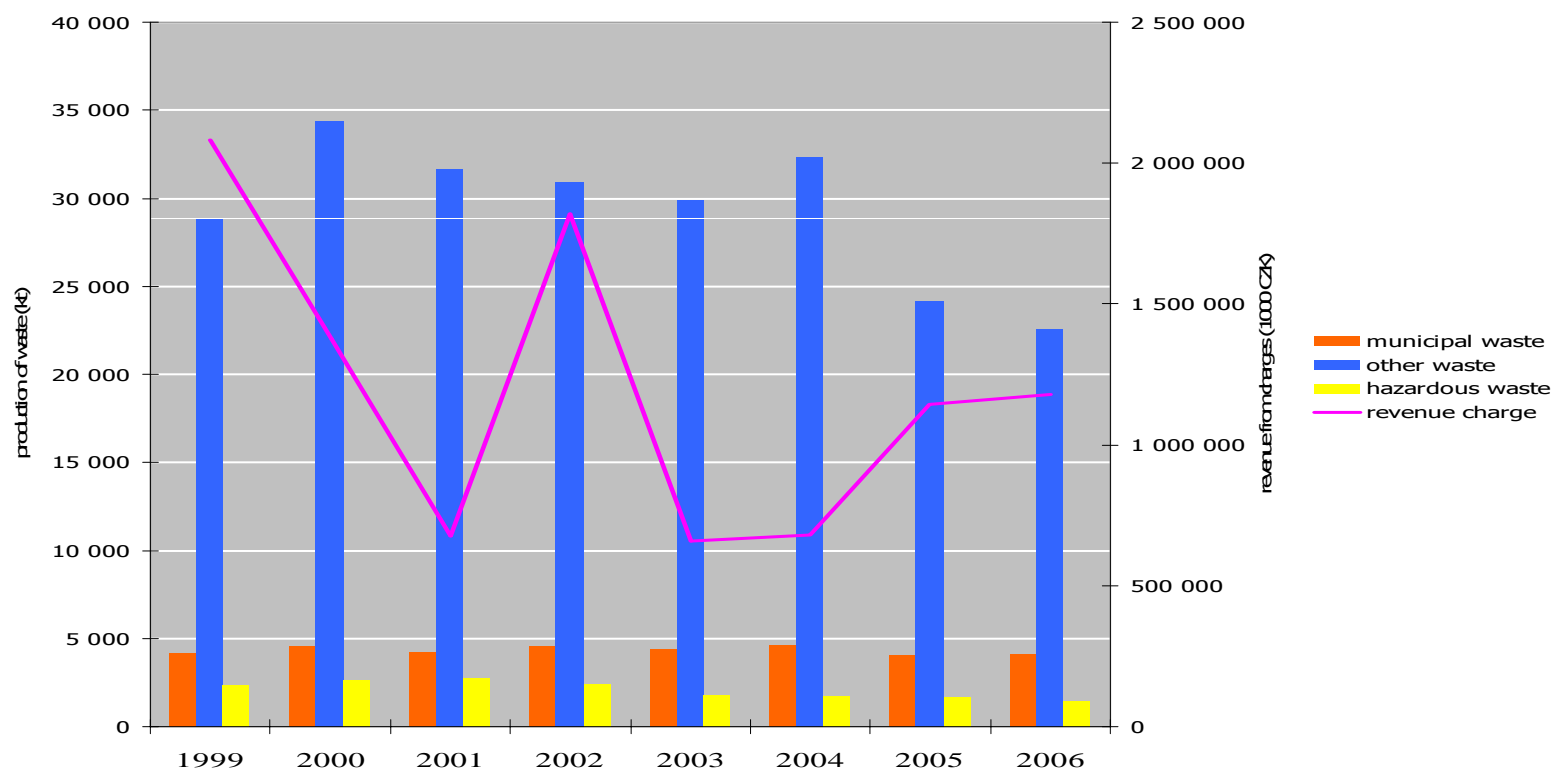
- maximum amount is based on eligible costs paid by municipality for operating one system of municipal waste management
- tariff rate CZK 300 – 3 300 per tonne (gradual growth from 1998 to 2008)
- charge is income of municipality

Revenue of Charges for Deposition of Waste, 1999 – 2006 (1 000 CZK)

	Basic charge (receiver: municipality)				Risk charge (SEF)
	Municipal	Other	Hazardous	Total	Hazardous
1999	1 022 895	990 821	28 364	2 042 080	40 403
2000	327 497	986 577	18 961	1 333 035	42 819
2001	108 367	312 281	81 241	501 889	175 270
2002	387 567	1 275 425	56 456	1 719 448	100 527
2003	263 136	287 378	37 783	588 297	70 924
2004	383 898	219 749	28 337	631 984	49 554
2005	647 391	352 482	49 655	1 049 530	95 552
2006	713 409	343 596	42 214	1 099 218	80 937

Source: Statistical Environmental Yearbook of the Czech Republic, Czech Statistical Office

Production of Waste and Revenue from Charges, 1999 - 2006



Source: CeHO, Statistical Environmental Yearbook of the Czech Republic

Proposal of Charges Rates in the Draft of Updated Act on Waste

	Landfill to the Environment		Landfill of Technological Material	Other Waste Disposal		Incineration of Municipal Waste
	MW+OW	HW		MW+OW	HW	
2008	400	4 700	0	0	0	0
2009-2010	700	7 000	700	300	3 000	200
2011-2012	1 000	10 000	1 000	400	4 000	250
from 2013	1500	15 000	1500	600	6000	300

Source: MoE CR

Conclusions

- Based on the experience of more than 15 years, it can be concluded that waste disposal charges have proven certain stimulative function and generated non-negligible revenue which has been used to support environmental projects
- In the years to come, the Czech Republic is willing to strengthen the stimulative role of these charges to support waste management hierarchy

Thank you for your attention

Contact:

Division of Environmental Economics and Policy
Ministry of Environment of the Czech Republic
Vršovická 65, 100 10 Prague 10
www.env.cz



Conference on Resource Efficiency



ntion

MODULE 2 From waste to resources

ics and Policy
ech Republic
ue 10



ENVIRONMENTAL SERVICES ASSOCIATION



VEOLIA
ENVIRONMENTAL
SERVICES

OAKDENE HOLLINS
Research and Consulting