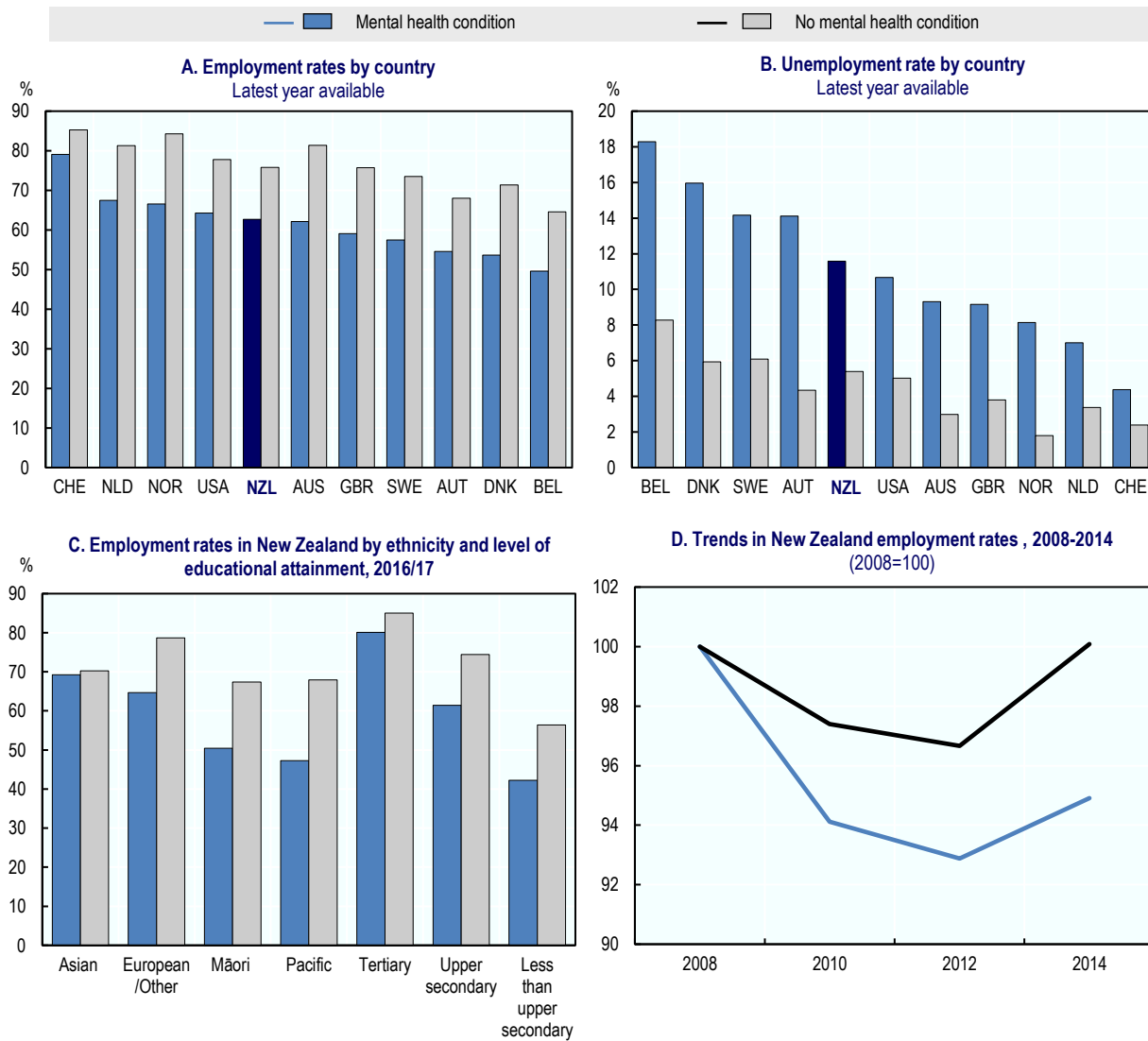


**Figure 1. Mental health conditions strongly affect employment and unemployment and improvements in New Zealand since 2008 were minimal**



Source: Panel A and B: OECD calculations based on national health surveys. Australia: National Health Survey 2011/12; Austria: Health Interview Survey 2006/07; Belgium: Health Interview Survey 2008; Denmark: National Health Interview Survey 2010; Netherlands: POLS Health Survey 2007/09; New Zealand: Health Survey 2016/2017; Norway: Level of Living and Health Survey 2008; Sweden: Survey on Living Conditions 2009/10; Switzerland: Health Survey 2012; United Kingdom: Adult Psychiatric Morbidity Survey 2007; United States: National Health Interview Survey 2008. Panel C: New Zealand: Health Survey 2016/2017; and Panel D: General Social Survey, 2008, 2010, 2012 and 2014.