

**OECD THEMATIC REVIEW OF TERTIARY EDUCATION**

**Country Background Report for Estonia**

**Annex: Tables and Figures**

Estonian Ministry of Education and Research

NOVEMBER 2006

## TABLES AND FIGURES

**Table A1. Total admission by type of institution**

	1995	1996	1997	1998	1999	2000	2001	2002	2003	2004	2005
Public universities	4 643	4 953	5 829	6 410	8 496	9 980	9 535	10 537	10 724	10 735	
Private universities		512	1 134	1 571	1 723	1 877	1 735	1 714	1 526	1 729	
State institutions of professional higher education	793	866	1 224	1 174	1 291	1 272	1 051	1 412	1 456	1 459	
Private institutions of professional higher education	1 362	1 700	1 872	2 113	1 813	1 645	1 307	1 976	2 344	2 516	
State VET schools	131	551	632	735	1576	2149	2543	2607	2681	2365	1220
Private VET schools	0	69	0	0	4	270	270	245	124	119	82

Source: Ministry of Education and Research, 2006

**Table A2. Admission to public universities in 1980, 1990, 1995-2005**

	1980	1990	1995	1996	1997	1998	1999	2000	2001	2002	2003	2004	2005
Estonian Academy of Art	94	88	155	143	136	194	255	251	231	268	240	285	286
Estonian University of Life Sciences	785	881	464	476	571	820	1 198	1 141	1 130	1 155	1 228	1 208	1 410
Estonian Academy of Music and Theatre	121	121	96	114	115	122	119	138	147	192	140	168	147
Tallinn University of Technology	2 122	1 784	1 423	1 394	1 597	1 705	2 538	2 222	2 219	2 507	2 911	2 627	3 365
University of Tallinn	636	817	578	695	1 172	1 205	1 602	1 789	2 060	2 077	2 276	1 968	2 413
University of Tartu	1 530	1 598	1 927	2 131	2 238	2 364	2 784	4 439	3 748	4 338	3 929	4 479	
Total	5 288	5 289	4 643	4 953	5 829	6 410	8 496	9 980	9 535	10 537	10 724	10 735	12 765

Source: Statistical Office, 2006.

**Table A3. Admission to state institutions of professional higher education, 1995-2005**

	1995	1996	1997	1998	1999	2000	2001	2002	2003	2004	2005
Estonian Maritime Academy	164	155	180	184	195	212	218	260	232	203	198
Estonian National Defence College	.	.	.	85	39	16	31	46	39	35	55
Narva Higher Education Institution	60	70	70	67	.	.	.	.	.	.	.
Estonian Public Service Academy	173	190	424	264	305	266	135	285	303	318	319
Tallinn College of Engineering	130	153	175	214	249	282	317	517	558	603	562
Tallinn Health College	.	.	.	.	.	.	.	.	.	.	390
Tartu Art College	.	.	.	.	.	64	62	65	67	60	59
Tartu Aviation College	10	25	25	25	35	46	61	66	76	68	69
Tartu School of Health Care	.	.	.	.	.	.	.	.	.	.	336
Tartu Teachers' College	81	83	121	136	140	167	.	.	.	.	.
Viljandi Culture Academy	50	65	79	74	87	118	169	173	181	172	0
Virumaa Higher Education Institution	125	125	150	125	125	.	.	.	.	.	.
Total	793	866	1224	1174	1175	1171	993	1412	1456	1459	1988

Source: Statistical Office, 2006.

**Table A.4. Admission to VET schools providing programmes of Higher Education, 1995-2005**

	Type of ownership	1995	1996	1997	1998	1999	2000	2001	2002	2003	2004	2005
Arvutikolledzh	Private	.	.	.	.	.	102	108	83	.	.	.
Dentes Tervishoiukool	Private	.	.	.	.	4	54	5	.	.	.	.
Disaini Kõrgem Kool	Private	.	.	.	.	.	.	37	47	.	.	.
Eesti Hotelli- ja Turisimajanduse Erakool	Private	.	.	.	.	.	.	52	87	124	119	82
Tallinna Kommertskolledzh	Private	.	.	.	.	.	114	50	.	.	.	.
Kohtla-Järve Meditsiinkool	State	.	66	61	66	75	36	34	30	.	.	.
Kohtla-Järve Polütehnikum	State	.	.	.	.	.	43	120	126	155	149	0
Konjunkturi ja Konsultatsiooni Rahvusvaheline Oppekeskus EMONO-R	Private	.	.	.	.	.	.	.	28	.	.	.
Lääne- Virumaa Kutsekõrgkool	State	.	.	.	.	.	162	438	345	416	391	244
Rakenduskunsti Kõrgem Erakool	Private	.	.	.	.	.	.	9	.	.	.	.
Rakvere Pedagoogikakool	State	.	.	.	.	188	214	.	.	.	.	.
Tallinna Kergetööstustehnikum	State	.	.	.	.	99	239	270	179	174	91	80
Tallinna Kommertskool	Private	.	28	.	.	.	.	.	.	.	.	.
Tallinna Kõrgem Giidikool	Private	.	.	.	.	.	.	9	.	.	.	.
Tallinna Majanduskool	State	.	.	.	.	239	483	666	759	583	465	446
Tallinna Meditsiinkool]*	State	.	190	242	259	303	328	368	408	419	405	.
Tallinna Pedagoogiline Seminar	State	131	136	149	227	455	486	308	302	394	314	300
Tartu Meditsiinkool]*	State	.	159	180	183	217	158	266	266	320	348	.
Võrumaa Kutsehariduskeskus	State	.	.	.	.	.	.	73	192	220	202	150
Total		131	579	632	735	1580	2419	2813	2852	2805	2484	1302

Source: Statistical Office, 2006.

\*Due to the change of the institutional type, statistics presented in table A.4. are since 2005.

**Table A5. Admission to private universities, 1995 – 2005**

	1995	1996	1997	1998	1999	2000	2001	2002	2003	2004	2005
Akadeemia Nord	.	.	249	229	159	267	228	339	270	258	
Audentes Mainor Ülikool	.	.	.	.	.	214	.	.	.	.	.
Audentes Ülikool	.	.	.	.	.	.	516	629	531	.	.
Audentese Kõrgem Ærikool	.	.	.	243	157	127	.	.	.	.	.
Concordia Rahvusvaheline Ülikool Eestis	.	.	285	336	242	228	226	245	.	.	.
EELK Usuteaduse Instituut	.	.	.	.	.	12	30	12	40	37	.
Eesti Humanitaarinstituut	.	.	92	150	124	98	81	99	87	124	.
Estonian Business School	363	512	545	488	468	449	463	689	363	407	342
Euroülikool	.	.	.	193	133	158	127	139	209	259	288
Mainori Majandusinstituut	.	.	.	.	.	221	187	.	.	.	.
Sotsiaalteaduste Erakool Veritas	.	.	.	.	92	102	53	70	.	.	.
Õigusinstituut	.	.	212	155	192	305	192	.	.	.	.
Total	363	512	1134	1571	1723	1877	1735	1714	1526	1729	1456

Source: Statistical Office, 2006.

**Table A6. Graduates by the type of institutions, 1980, 1990, 1995-2005**

	1980	1990	1995	1996	1997	1998	1999	2000	2001	2002	2003	2004	2005
Public universities	3655	3129	3083	2635	2715	2912	3495	3950	4596	5273	5660	5952	7470
Private universities	.	.	44	89	160	246	514	790	853	996	1117	1124	1034
State professional HEI-s	.	.	196	427	440	453	489	520	632	669	712	612	1209
Private professional HEI-s	.	.	32	150	506	428	534	503	829	674	725	804	874
State VET schools	.	.	.	.	.	.	.	285	650	1188	1629	1695	1157
Private VET Schools	.	.	.	.	.	.	.	285	685	1202	1663	1743	1206
Total	3655	3129	3355	3301	3821	4039	5032	6333	8245	10002	11506	11930	12950

Source: Statistical Office, 2006.

**Table A7. Number of graduates in academic and professional branches by field of study, 1992/93-2004/05\***

	92/93	93/94	94/95	95/96	96/97	97/98	98/99	99/00	00/01	01/02	02/03	03/04	04/05*
Education	Ac	509	352	252	266	248	264	263	404	474	521	608	797
	PHE	29	196	281	217	226	193	330	291	662	618	598	470
Humanities and Arts	Ac	360	333	492	418	397	425	437	584	752	754	887	1 144
	PHE	20	45	40	16	57	105	86	73	246	200	201	160
Social science, business and law	Ac	1 003	750	657	687	723	876	1 389	1 466	1 832	2 089	2 122	2 571
	PHE	67	59	74	230	536	466	779	1 033	1 486	1 796	1 866	1 753
Science	Ac	390	288	303	263	236	310	325	414	504	587	642	973
	PHE				23	22	25	24	47	91	189	237	278
Engineering, manufacturing and construction	Ac	836	640	428	305	350	374	458	503	613	623	559	804
	PHE			31	82	53	75	108	114	263	291	295	329
Agriculture	Ac	451	185	197	136	159	167	88	115	106	132	167	279
	PHE					5	7	14	9	11	13	2	
Health and welfare	Ac	232	292	438	407	591	475	399	355	438	538	528	379
	PHE			17	52	15	33	50	283	466	664	787	900
Services	Ac	306	104	133	67	56	82	87	99	124	141	207	520
	PHE			10	132	147	162	195	258	405	507	466	436

Source: Ministry of Education and Research, 2006

**Table A8. Graduates on different qualification levels, 1994-2005**

	1994	1995	1996	1997	1998	1999	2000	2001	2002	2003	2004	2005
Professional Higher Education programmes		.	.	.	.	.	.	.	173	568	1768	2461
Higher Vocational Education programmes		.	.	.	.	0	285	941	1360	1331	394	93
Diploma programmes	310	455	752	1061	1066	1586	1823	2272	2295	2502	2320	1772
Bachelor programmes	2772	2546	2101	2094	2281	2639	3065	3402	3586	3794	3786	5549
Integrated and Master programmes		.	.	.	.	.	.	.	156	178	286	252
Master *	163	325	410	618	586	672	698	831	1056	1278	1472	1535
PhD **	9	29	38	48	106	135	117	149	188	226	209	118

Source: Statistical Office, 2006

\*Includes intern-graduates

\*\* Includes resident-graduates

**Table A9. R&D data for public universities, 2004**

	Tallinn University of Technology	Tallinn University	Tartu University	Estonian University of Life Sciences	Estonian Art Academy	Estonian Music and Theatre Academy
Targeted financing of research in millions of kroons	48.2	7.3	95.8	20.8	0.4	0.4
Defended doctoral theses	25	12	79	8	1	3

Source: *Estonian Rectors' Conference*

**Table A10. Breakdown of students by age group, 1993 and 2005**

Age group	1993			2005		
	Total	male	female	total	male	Female
Aged 18 and under	14.8%	15.4%	14.3%	3.2%	2.9%	3.5%
Aged 19–24	62.8%	60.6%	65.0%	58.4%	62.9%	55.6%
Aged 25–29	14.0%	15.3%	12.7%	16.5%	17.5%	15.9%
Aged 30 and over	8.3%	8.7%	8.0%	21.8%	16.8%	25.0%

Source: *Statistical Office, EHIS (8.11.2005)*

**Table A11. Graduates on by qualification level, 1980-2004**

	1980	1985	1990	1995	1996	1997	1998	1999	2000	2001	2002	2003	2004
Basic education	19137	20799	18839	16879	18011	17677	15800	17464	17335	17980	18575	19534	20469
..basic education - diurnal courses*	18285	20327	18474	16343	17380	17011	15296	17029	16851	17433	18094	18982	19971
..basic education - evening or correspondence courses	852	472	365	472	513	544	438	398	484	547	481	552	498
..basic education together with acquiring a profession in vocational courses	..	..	..	64	118	122	66	37	..	..	..	..	..
General secondary education	17499	16358	14748	12139	12851	12793	12333	13699	13635	12516	13054	11178	11362
..general secondary education - diurnal courses	9840	9357	9277	8787	9435	9551	9216	10074	9807	8921	9882	10115	10306
..general secondary education - evening or correspondence courses	5163	3733	1073	1139	1143	1202	1224	1228	1256	1237	957	1063	1056
..general secondary education together with acquiring a profession in vocational courses	2496	3268	4398	2213	2273	2040	1893	2397	2572	2358	2215	..	..
Vocational education	12968	13571	12949	7345	8231	8495	8537	8542	8566	8953	10911	8081	7049
..profession acquisition in vocational courses	7129	8156	8202	5052	5296	5545	5670	3794	3407	2698	2445	152	248
..vocational secondary education	..	..	..	..	..	..	..	1989	2901	4777	8025	7886	6801
....vocational secondary education based on basic education	..	..	..	..	..	..	..	..	..	276	3396	3526	3026
....vocational secondary education based on secondary education	..	..	..	..	..	..	..	1989	2901	4501	4629	4360	3775
..professional secondary education	5839	5415	4747	2293	2935	2950	2867	2759	2258	1478	441	43	..
....professional secondary education together with general secondary education	..	..	..	389	835	668	612	683	563	642	279	42	..
Higher education**	3655	3575	3129	3355	3301	3821	4039	5032	6048	7595	8814	9877	10235

..basic education in diurnal courses\*: \* Due to the change in school entrance age from 6 to 7, a smaller number of pupils started school in the years 1989-1991, and the number of graduates fell in 1998.

\*\* Graduates during the calendar year in 1980-1990, later during the academic year

Source: *Statistical Office, 2006*



**Table A12. Graduates' (1999/00-2002/03) employment by the economic sector, 2003.**

	Education		Humanities		Social Science		Natural & Exact Sciences		Engineering & Construction		Agriculture		Health Care		Service		Total
Agriculture, hunting and forestry	12	0,4%	7	0,2%	88	1%	11	1%	39	1%	89	16%	3	0,1%	20	1%	269
Fishing		0%		0%	3	0%	1	0%	1	0%	6	1%		0%	2	0,1%	13
Mining and quarrying		0%		0%	34	0,3%	3	0,1%	33	1%	1	0,2%	3	0,1%	2	0,1%	76
Manufacturing	92	3%	274	10%	1 426	12%	119	6%	846	26%	62	11%	69	2%	107	5%	2 995
Electricity, gas, water supply	7	0,2%	5	0,2%	141	1%	17	1%	142	4%	2	0,4%	2	0,1%	9	0,4%	325
Construction	22	1%	12	0%	304	2%	21	1%	410	13%	3	1%	3	0,1%	17	1%	792
Wholesale and retail trade, repair of motor vehicles, etc.	156	5%	237	8%	2 024	16%	162	8%	457	14%	91	17%	347	9%	180	9%	3 654
Hotels and restorans	27	1%	45	2%	257	2%	14	1%	20	1%	6	1%	27	1%	147	7%	543
Transport, storage and communication	72	2%	96	3%	937	8%	84	4%	142	4%	7	1%	24	1%	282	14%	1 644
Financial intermediation	42	1%	42	1%	1 168	10%	87	4%	38	1%	11	2%	28	1%	33	2%	1 449
Real estate, renting and business activities	120	4%	331	12%	1 859	15%	611	30%	588	18%	40	7%	137	4%	125	6%	3 811
Public administration and defence, compulsory social security	803	24%	358	13%	2 381	19%	271	13%	234	7%	100	18%	540	14%	730	36%	5 417
Education	1 838	54%	786	28%	799	7%	522	26%	196	6%	96	18%	281	7%	203	10%	4 721
Health and social work	40	1%	32	1%	216	2%	25	1%	25	1%	10	2%	2 198	58%	36	2%	2 582
Other economic activities	155	5%	576	21%	639	5%	71	4%	74	2%	17	3%	132	3%	127	6%	1 791
<b>Total</b>	3 386	<b>100%</b>	2 801	<b>100%</b>	12 276	<b>100%</b>	2 019	<b>100%</b>	3 245	<b>100%</b>	541	<b>100%</b>	3 794	<b>100%</b>	2 020	<b>100%</b>	<b>30 082</b>

*Grey areas denote that the number of taxpayers is less than 50  
Source: Center for Policy Studies PRAXIS, 2005*

**Table A14. Mean school-life expectancy by gender, age group and year**

	1993	1994	1995	1996	1997	1998	1999	2000	2001	2002	2003	2004
Males												
6-23	11.84	12.11	12.44	12.74	12.97	13.22	13.48	13.59	13.62	13.56	13.64	13.76
6-25	12.02	12.28	12.62	12.94	13.21	13.46	13.77	13.92	13.98	13.9	13.98	14.1
6-40	12.31	12.54	12.9	13.29	13.56	13.92	14.37	14.68	14.82	14.82	14.94	15.14
Females												
6-23	12.32	12.73	13.06	13.4	13.72	14.04	14.39	14.49	14.56	14.53	14.55	14.61
6-25	12.51	12.92	13.27	13.64	14.01	14.36	14.78	14.94	15.04	14.99	15	15.06
6-40	12.77	13.2	13.55	14.01	14.46	14.97	15.68	16.21	16.55	16.74	16.88	17.06

Source: Statistical Office, 2006

**Table A13. Pupils and students enrolled per 10,000 inhabitants by level of study**

	1980	1985	1990	1995	1996	1997	1998	1999	2000	2001	2002	2003	2004
General education	1473	1459	1435	1539	1573	1601	1614	1615	1596	1567	1522	1472	1416
..basic education	1159	1200	1233	1282	1306	1327	1346	1343	1318	1278	1228	1171	1104
..secondary education	314	259	201	256	267	274	268	273	278	289	294	301	312
Vocational education	275	281	232	205	222	224	225	226	225	219	207	208	222
..vocational courses	113	136	113	118	128	133	140	71	43	20	1	2	2
..vocational secondary courses	.	.	.	.	.	.	.	111	164	194	205	206	220
..professional secondary courses	162	145	119	87	95	91	85	44	18	4	1	0	.
Higher education	172	154	165	191	212	247	293	361	412	443	469	485	502
..professional higher education courses	.	.	.	.	.	.	.	.	.	.	46	106	142
..higher vocational education courses	.	.	.	.	.	.	.	23	41	56	38	14	2
..diploma courses	.	.	.	43	55	75	108	120	125	128	95	60	35
..bachelor courses	.	.	.	126	133	146	157	184	204	211	216	222	229
..integrated bachelor and master courses	.	.	.	.	.	.	.	.	.	.	16	19	23
..master courses	.	.	.	18	20	19	20	25	32	38	47	52	58
..PhD courses	.	.	.	4	5	6	8	9	11	11	12	12	13

Source: Statistical Office, 2006

**Table A14. Student/ staff ratio, 1999-2005**

	1999/2000	2000/2001	2001/2002	2002/2003	2003/2004	2004/2005
Academic staff employed	3 554	3 715	3 821	4 217	4 127	4 237
Academic staff (filled vacancies)	3 106	3 069	3 189	3 313	3 201	3 228
Students (including GC+fee-paying)	49 574	56 437	60 409	63 625	65 659	67 760
Students per academic staff member	13.9	15.2	15.8	15.1	15.9	16.0

Source: Ministry of Education and Research, 2006

**Table A15. Number of students per institution, as of the start of academic year 2005/06**

<b>Public universities (6):</b>	
Estonian Art Academy	962
Estonian University of Life Sciences	4 752
Estonian Music and Theatre Academy	567
Tallinn University of Technology	10 700
Tallinn University	7 350
Tartu University	18 536
<b>Subtotal:</b>	<b>42 867</b>
<b>Private universities</b>	
University Nord	973
Audentes University	2 547
Eesti Evangeelse Luterliku Kiriku Usuteaduse Instituut	116
Estonian Business School	1 981
European University	850
<b>Subtotal:</b>	<b>6 467</b>
<b>Universities total:</b>	<b>49 334</b>
<b>Private Professional Higher Education Institutions</b>	
Arvutikolledž	245
Disaini Kõrgem Kool	211
Eesti EKB Liit Kõrgem Usuteaduslik Seminar	56
Eesti Infotehnoloogia Kolledž	378
Eesti Metodisti Kiriku Teoloogiline Seminar	160
Eesti-Ameerika Ärikolledž	801
Kõrgkool "I Studium"	854
Mainori Kõrgkool	2 538
Rakendus Kunsti Kõrgem Erakool	18
Sillamäe Majanduse ja Juhtimise Instituut	819
Sotsiaal-Humanitaarinstituut	1 189
Tallinna Kommertskolledž	103
Tartu Teoloogia Akadeemia	80
<b>Subtotal:</b>	<b>7 452</b>
<b>State professional higher education institutions</b>	
Estonian Maritime Academy	933
Estonian National Defence College	166
Public Service Academy	1 100
Tallinn College of Engineering	2 111
Tallinn Health College	1 191
Tartu Art College	257
Tartu Aviation College	309
Tartu School of Health Care	1 075
<b>Subtotal:</b>	<b>7 142</b>
<b>PHEI-s total</b>	<b>14 594</b>
<b>Private VET School</b>	

Estonian School of Hotel and Tourism Management	301
<b>Subtotal:</b>	<b>301</b>
<b>State VET schools</b>	
Kohtla-Järve School of Health	30
Lääne-Virumaa Higher Vocational School	991
Tallinna Kergetööstustehnikum	220
Tallinn School of Economics	1 322
Tallinna Pedagoogiline Seminar	955
Võru County Vocational Center	540
<b>Subtotal:</b>	<b>4 058</b>
<b>VET schools total:</b>	<b>4 359</b>
<b>Total students:</b>	<b>68 287</b>

**Table A16. Public expenditure on higher education as % of GDP, 1995-2004, (mill. kroons)**

	1995	1996	1997	1998	1999	2000	2001	2002	2003	2004*
Expenditure on HE	421.3	605.9	686.8	737.3	977.9	981.9	1057.6	1285.7	1373.6	1592.4
% GDP	1.0%	1.1%	1.0%	0.9%	1.2%	1.1%	1.0%	1.1%	1.1%	1.2%

\* Estimate

**Table A17. Inflation rate 1997-2005**

	1997	1998	1999	2000	2001	2002	2003	2004	2005
EU - 25	2.6	2.1	1.6	2.4	2.5	2.1	1.9	2.1	2.2
Estonia	9.3	8.8	3.1	3.9	5.6	3.6	1.4	3.0	4.1.

Source: Eurostat, 2006

Data is expressed in relation to reference period 2005 = 100

**Table A18. Total financing of higher education in the state budget in area of administration of the Ministry of Education and Research, by school type (million kroons)**

	1995	1996	1997	1998	1999	2000	2001	2002	2003	2004*
SC for public universities	252.2	339.8	413.6	476.0	570.5	555.0	573.2	632.7	668.8	712.2
SC for private universities	0.3	1.4	1.4	1.4	1.9	1.7	2.5	1.8	1.2	1.3
Expenditure of UT Hospital and residency							3.0	14.1	32.9	49.8
Other finances to universities (incl. foreign aid)	26.5	45.1	61.3	51.4	46.7	48.4	64.3	78.7	98.1	152.6
Investments to universities	36.1	59.8	74.9	70.9	51.6	40.0	34.3	100.7	120.3	125.4
<b>Total to universities</b>	<b>315.0</b>	<b>446.1</b>	<b>551.1</b>	<b>599.8</b>	<b>670.8</b>	<b>645.1</b>	<b>677.3</b>	<b>828.1</b>	<b>921.3</b>	<b>1 041.3</b>
SC for institutions of professional higher education	38.6	59.0	65.0	70.2	82.7	78.3	84.6	89.7	100.5	109.4
SC for private institutions of professional higher education								0.1	1.0	3.6
Other finances to institutions of professional higher education (incl. foreign aid)	0.6	1.3	2.7	3.0	2.5	2.7	2.5	1.9	3.6	12.3
Investments to institutions of professional higher education	7.6	6.9	9.9	13.0	2.8	3.4	2.7	6.0	0.6	2.2
<b>Total to institutions of professional higher education</b>	<b>46.9</b>	<b>67.2</b>	<b>77.6</b>	<b>86.2</b>	<b>88.1</b>	<b>84.4</b>	<b>89.8</b>	<b>97.7</b>	<b>105.8</b>	<b>127.4</b>
<b>SC for vocational schools</b>					<b>31.4</b>	<b>39.8</b>	<b>47.5</b>	<b>53.9</b>	<b>83.0</b>	<b>98.0</b>
Other expenditure	1.1	1.0	1.8	1.7	2.1	2.9	2.8	31.1	7.7	47.3
<b>Total financing of higher education</b>	<b>362.9</b>	<b>514.3</b>	<b>630.6</b>	<b>687.7</b>	<b>792.3</b>	<b>772.1</b>	<b>817.3</b>	<b>1 010.8</b>	<b>1 117.9</b>	<b>1 375.7</b>

In addition to the expenditure financed directly from the state budget, institutions of higher education receive their own revenue, which is also reflected in the state budget:

Own revenue and grants to institutions of professional higher education	16.5	24.9	25.2	28.2	23.7
---	------	------	------	------	------

\*provisional data

Source: Ministry of Education and Research

**Table A19. Main financial figures of public universities in 2004 (mill. kroons)**

	Tallinn University of Technology	Tallinn University	Tartu University	Estonian University of Life Sciences	Estonian Art Academy	Estonian Music and Theatre Academy
Operating revenue	578.6	253.4	838.0	284.8	62.7	51.0
... including state-commissioned education	182.6	89.3	285.8	74.7	41.0	37.5
Operating expenses	487.3	224.1	790.2	251.5	56.5	58.8
... staff expenditure	258.4	140.4	414.4	124.6	31.0	33.9
Total net gain/ loss of the year	90.3	29.7	44.9	69.9	3.1	-7.9
Balance sheet total	654.5	163.8	1000.5	490.7	23.1	129.4
Current assets	129.8	74.3	175.3	49.0	11.7	6.4
Fixed assets	524.7	89.5	825.2	441.7	11.5	123.0
Short-term liabilities	89.0	32.3	136.9	41.8	4.8	7.5
Long-term liabilities and appropriations	27.2	15.81	189.0	43.9	.	15.5
Capital	538.4	115.7	674.5	405.1	18.3	106.4
Bank loans	27.2	17.7	206.4	40.7	.	12.8
State-commissioned education's share in operating revenue	31.6%	35.2%	34.1%	26.2%	65.4%	73.5%
Staff expenditure in operating revenue	53%	62.7%	52.4%	49.5%	54.9%	57.6%

Source: Estonian Rectors' Conference Yearbook, 2004/05

**Table A20. Salary levels in public universities, average monthly in 2004 (in kroons)**

	Tallinn University of Technology	Tallinn University	Tartu University	Estonian University of Life Sciences	Estonian Art Academy	Estonian Academy of Music and Theatre
Professor	22 271	19 010	23 747	20 961	14 743	14 755
Docent	16 185	13 690	14 944	14 673	8 105	10 413
Senior research fellow	13 867	13 690	14 944	12 678		
Lecturer	11 628	11 145	9 534	9 970	7 500	7 982
Research fellow	10 078	10 564	9 534	8 381	11 053	7 596
Teacher	13 102	8 000	8 518			
Assistant	9 698	9 470	8 518	7 897		

Source: *Estonian Rectors' Conference, Yearbook 2004/05*

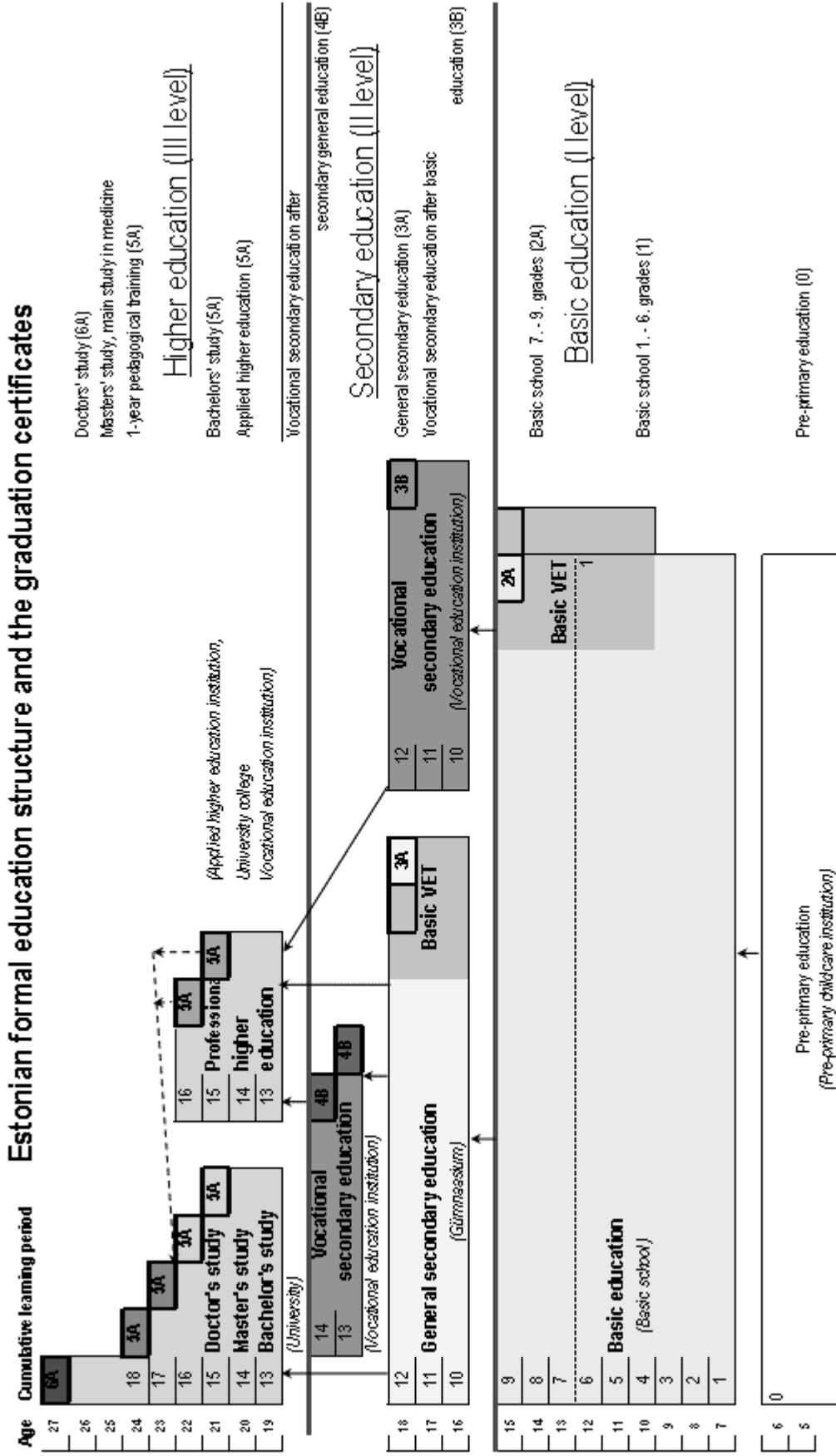
\*The average monthly salary of the given year which in addition to the basic pay also includes all supplementary and support payments specified in the contract for services

**Table A21. Division of R&D expenditure by area in 1996 and 2003 (million kroons and %)**

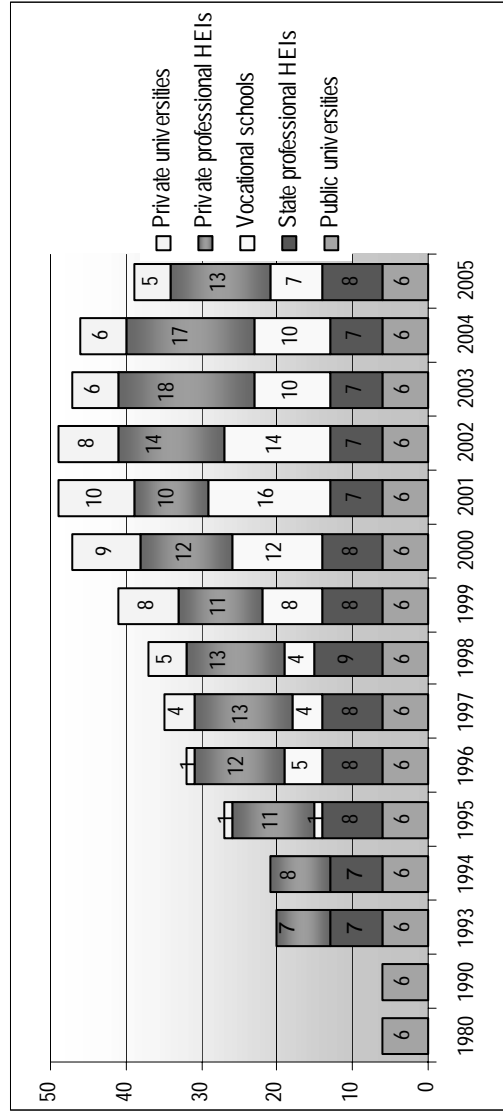
	Natural sciences	Engineering studies	Medical sciences	Agricultural sciences	Social sciences	Humanities
1996	111.0 (37.2%)	76.3 25.5%	32.7 11.0%	24.4 8.2%	26.0 8.7%	28.1 9.4%
2003	234.3 33.9%	144.5 20.9%	77.8 11.2%	62.8 9.1%	82.0 11.9%	90.7 13.1%

Source: *Ministry of Education and Research, 2006.*

**Diagram B1. Estonian formal education structure and the graduation certificates**



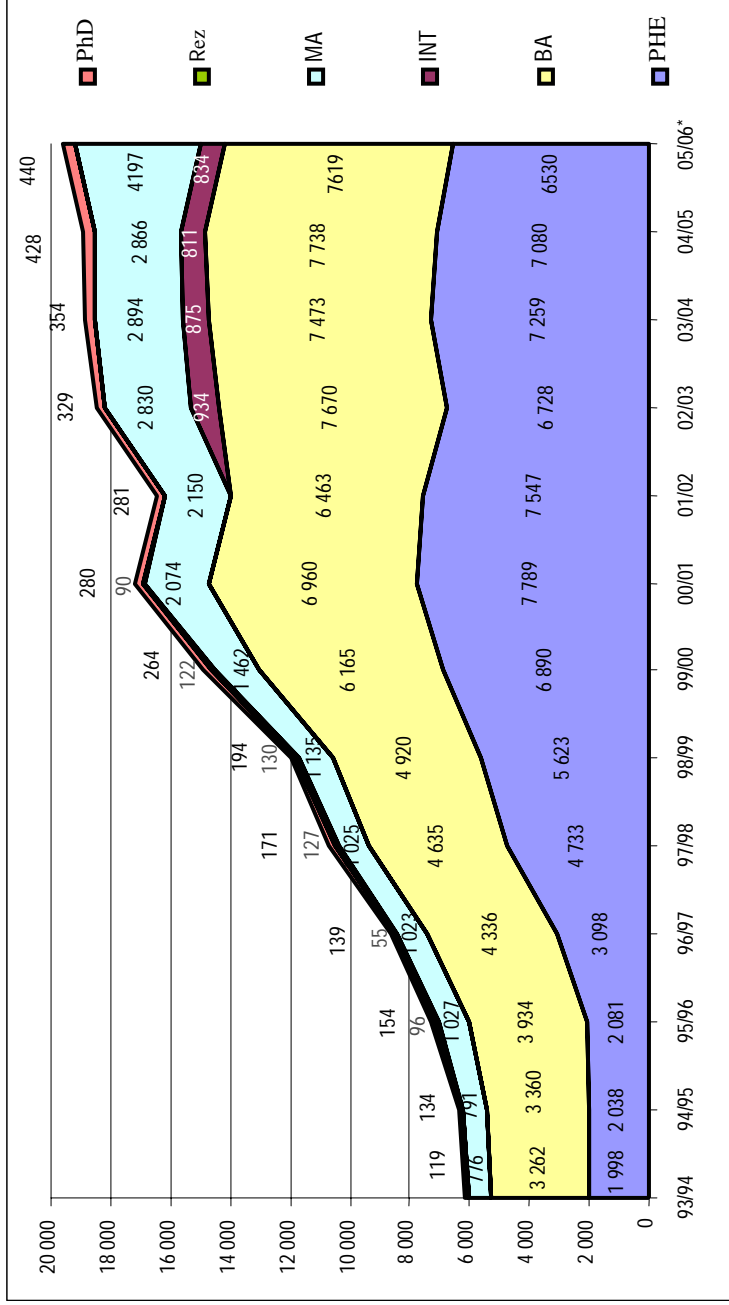
**Diagram B2. Dynamics of the number of institutions providing HE programmes in 1980, 1990, 1990, 1990, 1993-2005**



Source: Ministry of Education and Research, Statistical Office



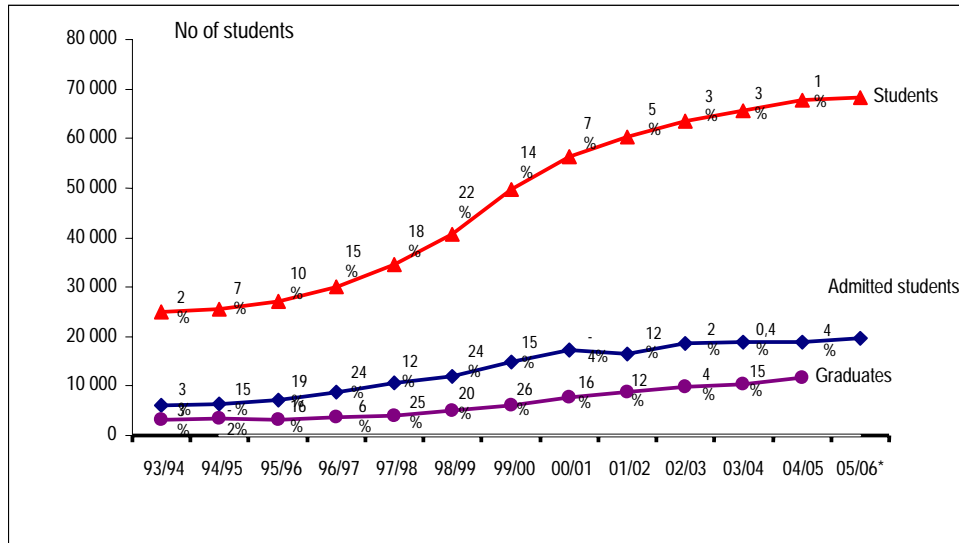
**Diagram B3. Admission to HE programmes of all types, 1993-2005**



Source: Ministry of Education and Research, 2006

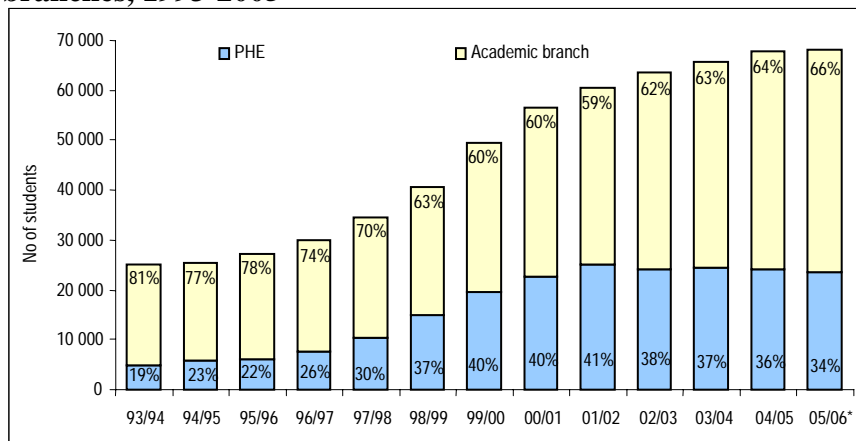
- Rez – Residency
- MA – Master's Studies
- Int – Integrated studies
- BA – Bachelor studies
- PHE – Professional Higher Education Studies (vocation higher education programmes and diploma programmes are also included under this category)

**Diagram B3. Change in the number and growth rate of students, 1993-2005**



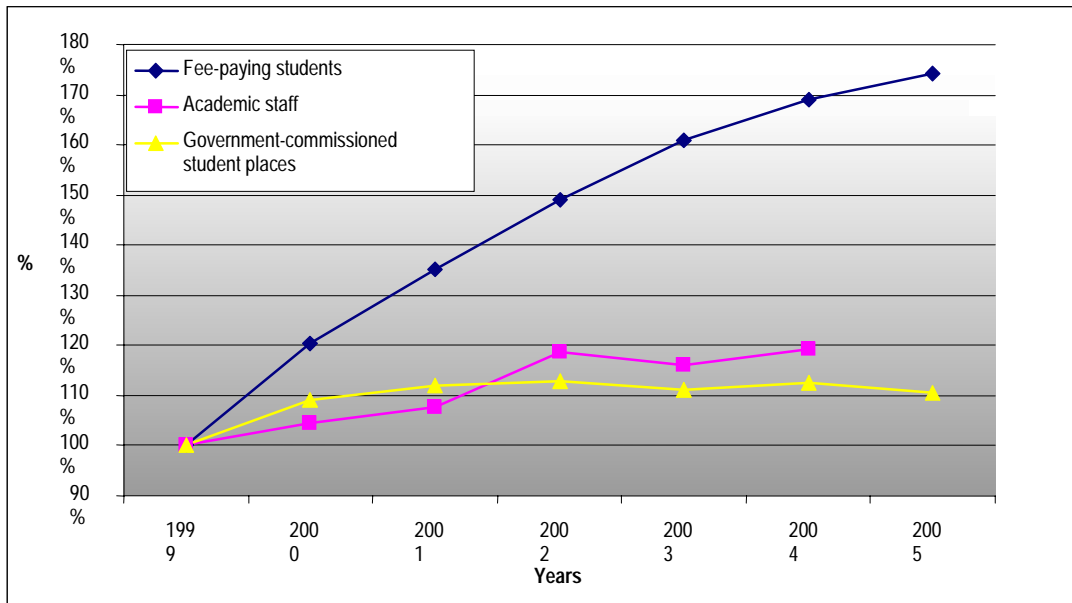
Source: Ministry of Education and Research, 2006.

**Diagram B4. Share of students in the academic and professional higher education branches, 1993-2005**



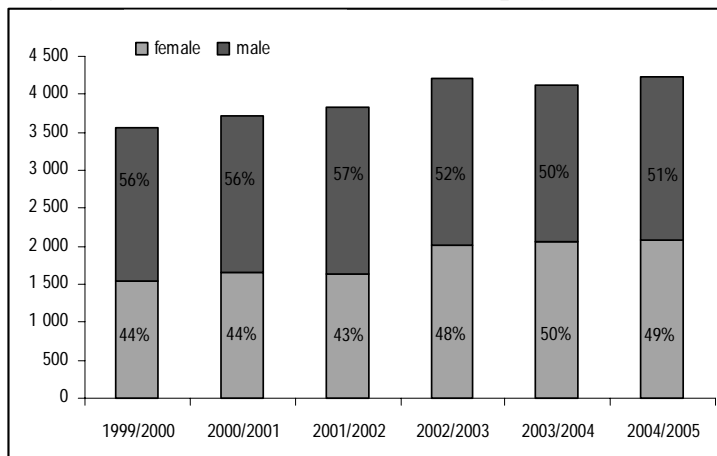
Source: Ministry of Education and Research, 2006.

**Diagram B5. Increase in the number of students and academic staff, 1999-2005.**



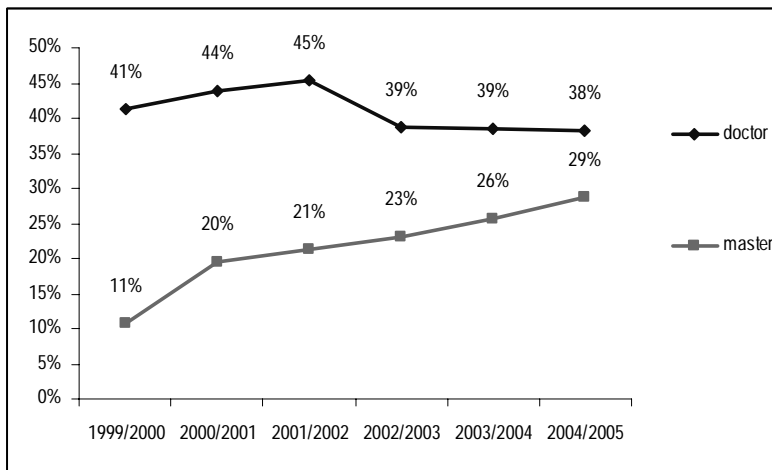
Source: Ministry of Education and Research, 2006.

**Diagram B6. Academic staff with an employment contract (persons), 1999-2004**



Source: Statistical Office of Estonia

**Diagram B7. Academic staff with an employment contract (filled vacancies) with scientific degree (% of total), 1999-2004**



Source: Statistical Office of Estonia

**Diagram B8. R&D financing system in Estonia**

