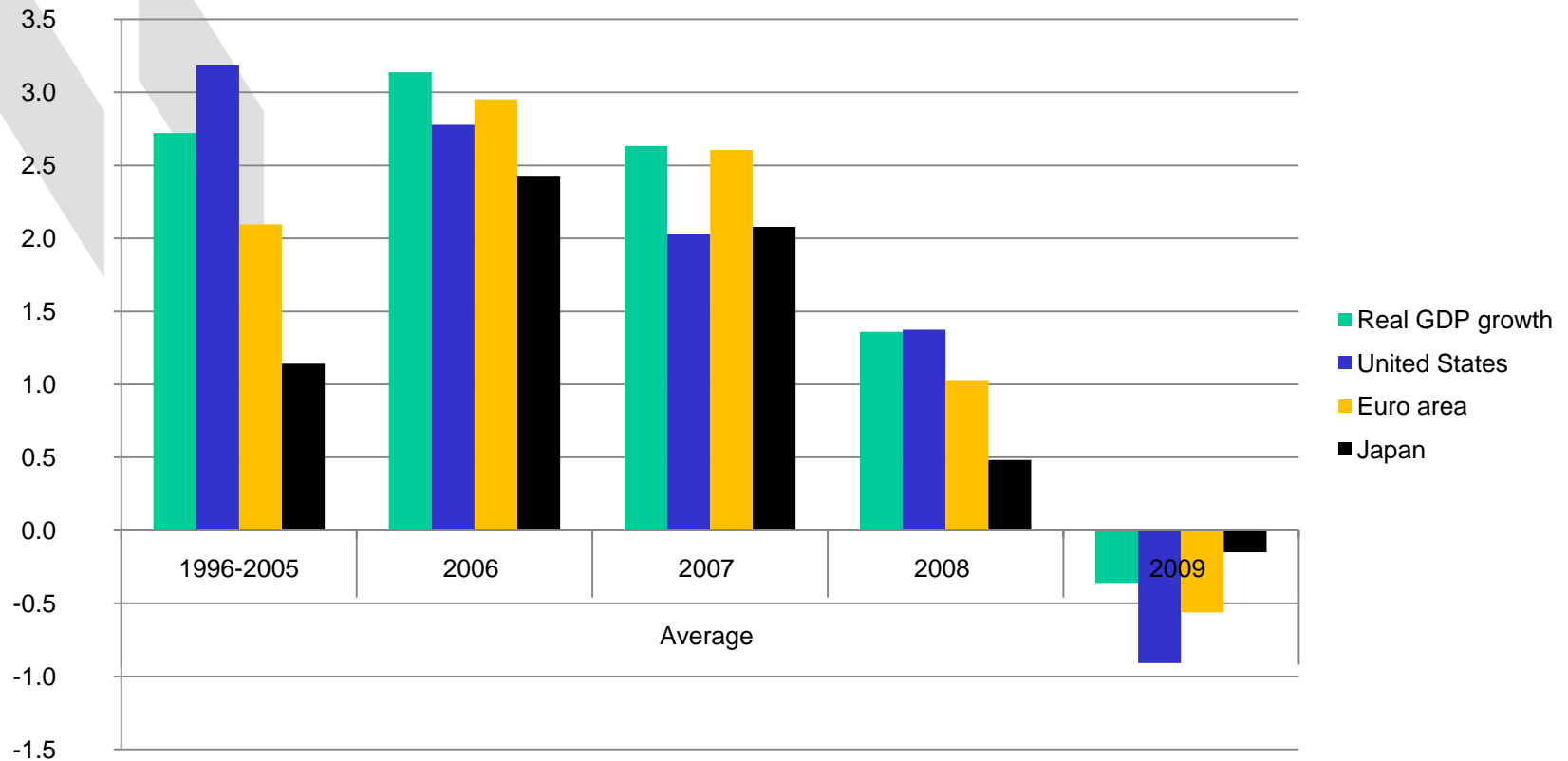




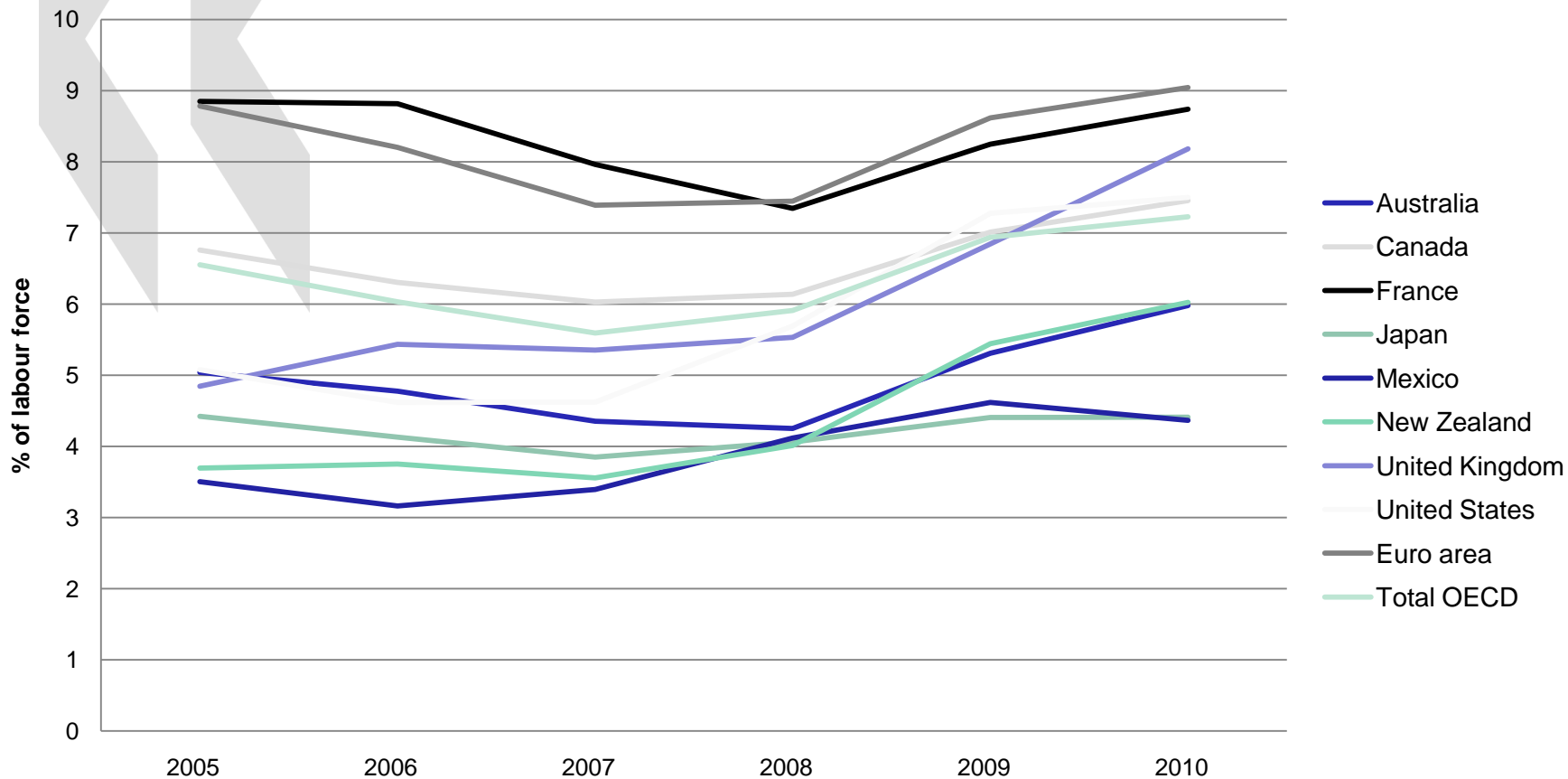
BETTER JOBS AND INCLUSION: WHAT ROLE FOR AREA-BASED PARTNERSHIPS IN TIMES OF ECONOMIC CRISIS?


Growth is plunging in OECD area ...



Unemployment will continue rising

Unemployment forecast



- 
- What is the impact of the crisis on skills and jobs today and in the medium term?
 - What action can be taken at local level to remedy the effect of the crisis on skills, jobs and social inclusion? Why and where partnerships?
 - What are the policy implications: what is required from the national level?

Vienna Action Statement on Partnerships

- *Ensure flexibility in policy implementation.*
- *Establish robust communication mechanisms through which partnerships can influence and comment upon policy developments which will impact upon their areas.*
- *Better align policy objectives.*
- *Establish strong evaluation tools for measuring added value.*
- *Build the capacities of local, regional and national stakeholders to work effectively in partnership through training and development.*
- *Provide a secure financial base.*