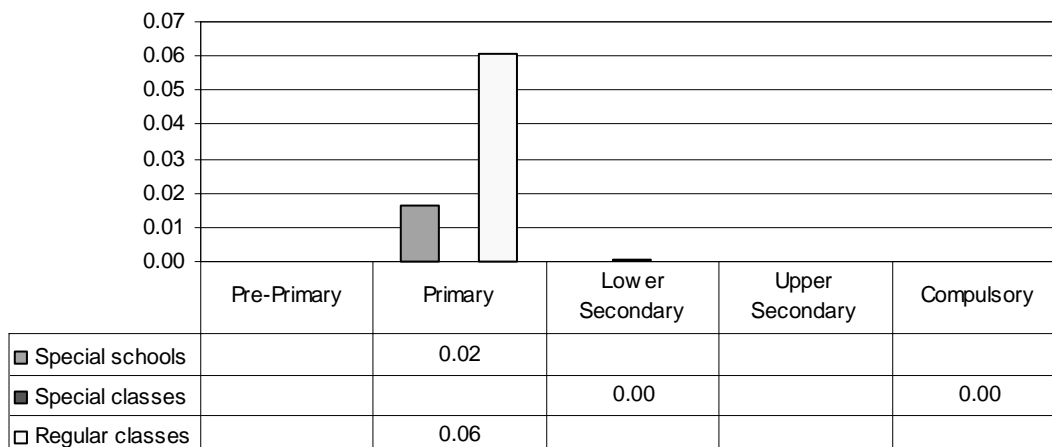


**IRELAND**

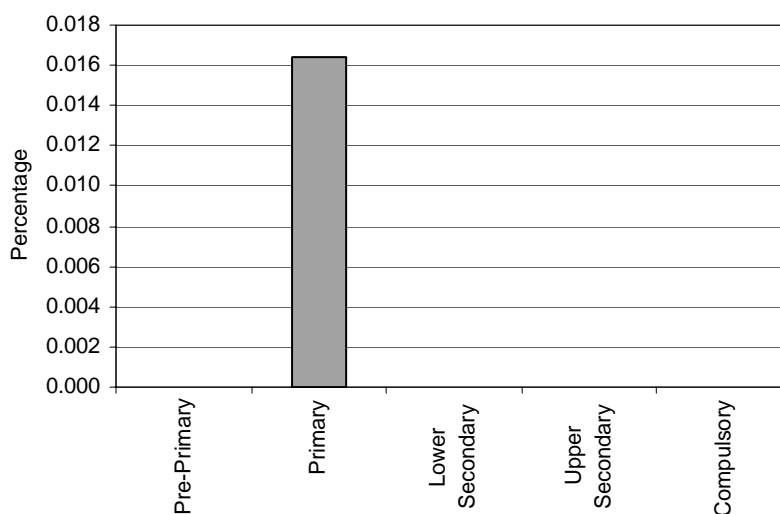
*Category 1 Cross-national Category A* – Visually-impaired pupils are those who have been formally identified by an ophthalmologist in accordance with agreed criteria.

**Proportion of students with visual impairments by phases of education in special schools, special classes and regular classes**



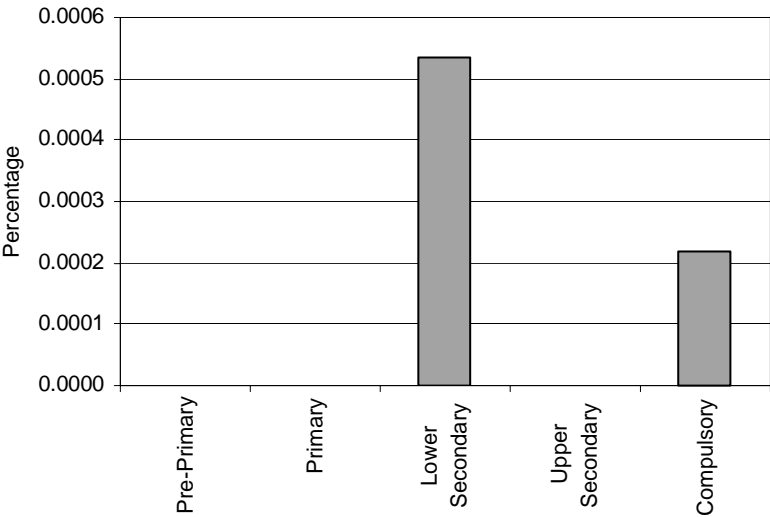
Note: Special schools data in pre-primary education are not applicable.  
 Special schools data in lower secondary, upper secondary and compulsory education are included in primary data.  
 Special classes data in pre-primary, primary and upper secondary education are not applicable.  
 Regular classes data in pre-primary education are not applicable.  
 Regular classes data in lower secondary, upper secondary and compulsory education are missing.

**Special Schools - Category 1. Total percentage of students with visual impairments falling within the resources definition, by phase of education**



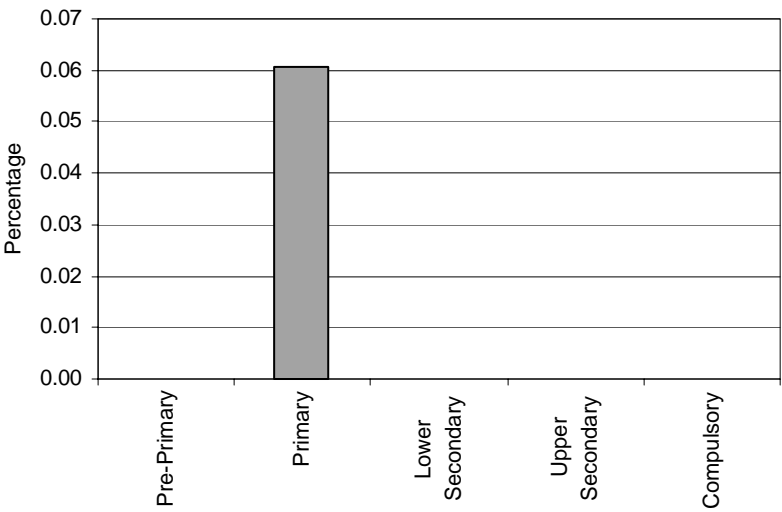
Note: Special schools data in pre-primary education are not applicable.  
 Special schools data in lower secondary, upper secondary and compulsory education are included in primary data.

**Special Classes - Category 1. Total percentage of students with visual impairments falling within the resources definition, by phase of education**



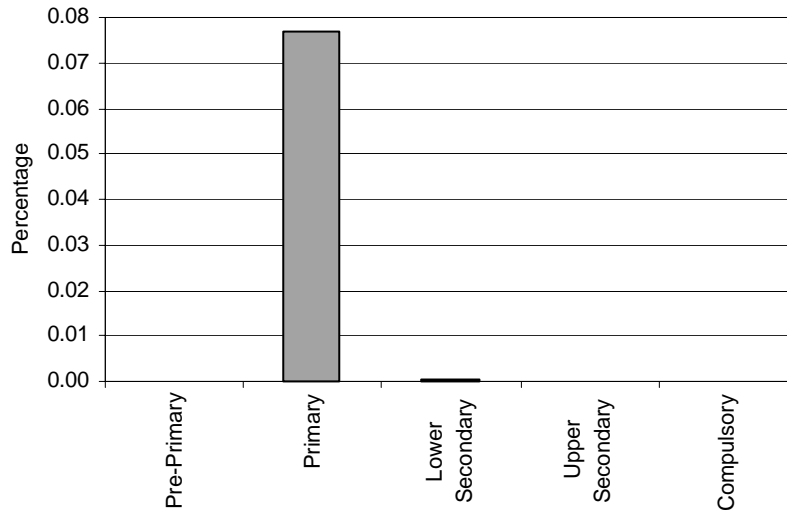
Note: Special classes data in pre-primary, primary and upper secondary education are not applicable.

**Regular Classes - Category 1. Total percentage of students with visual impairments falling within the resources definition, by phase of education**



Note: Regular classes data in pre-primary education are not applicable. Regular classes data in lower secondary, upper secondary and compulsory education are missing.

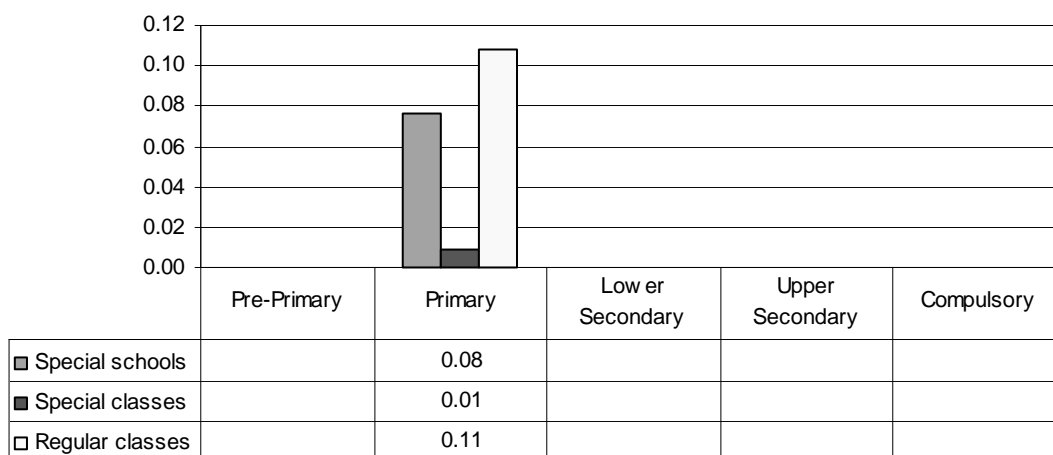
**Total - Category 1. Total percentage of students with visual impairments falling within the resources definition**



Note: Special schools data in pre-primary education are not applicable.  
Special schools data in lower secondary, upper secondary and compulsory education are included in primary data.  
Special classes data in pre-primary, primary and upper secondary education are not applicable.  
Regular classes data in pre-primary education are not applicable.  
Regular classes data in lower secondary, upper secondary and compulsory education are missing.

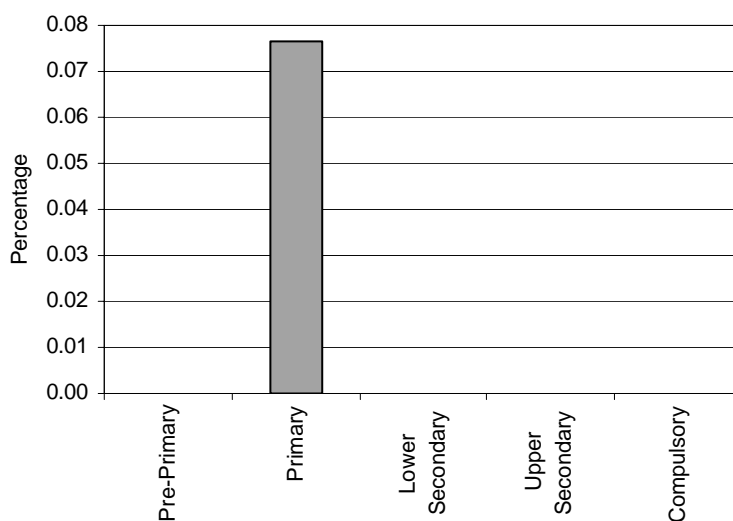
Category 2 Cross-national Category A – Hearing-impaired pupils are those whose hearing is affected to an extent that renders the understanding of speech through the ear alone, with or without a hearing aid, difficult or impossible.

**Proportion of students with hearing impairments by phases of education in special schools, special classes and regular classes**



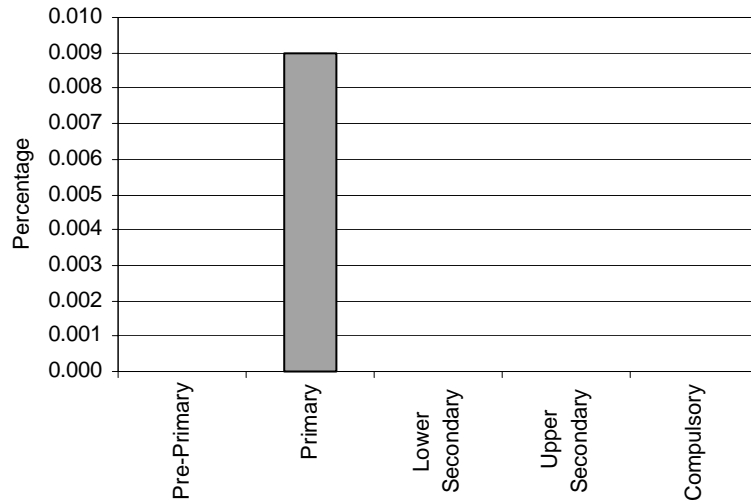
Note: Special schools data in pre-primary education are not applicable.  
 Special schools data in lower secondary, upper secondary and compulsory education are included in primary data.  
 Special classes data in pre-primary education are not applicable.  
 Special classes data in lower secondary and upper secondary education are included in primary data.  
 Special classes data in compulsory education are missing.  
 Regular classes data in pre-primary education are not applicable.  
 Regular classes data in lower secondary, upper secondary and compulsory education are missing.

**Special Schools - Category 2. Total percentage of students with hearing impairments falling within the resources definition, by phase of education**



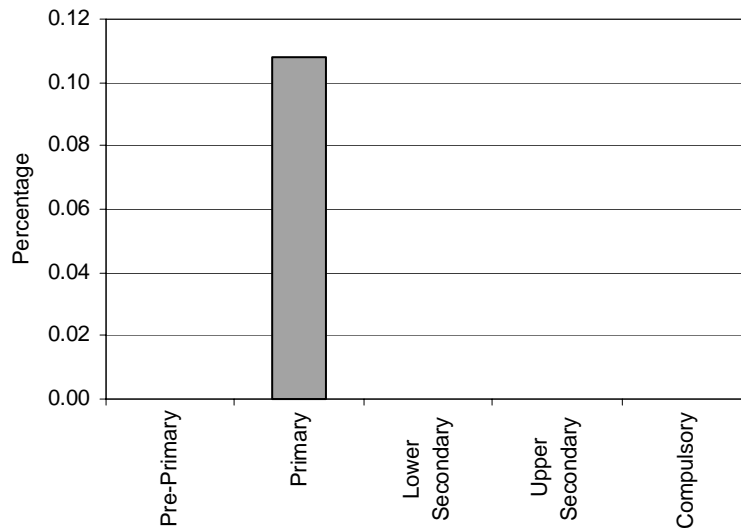
Note: Special schools data in pre-primary education are not applicable.  
 Special schools data in lower secondary, upper secondary and compulsory education are included in primary data.

**Special Classes - Category 2. Total percentage of students with hearing impairments falling within the resources definition, by phase of education**



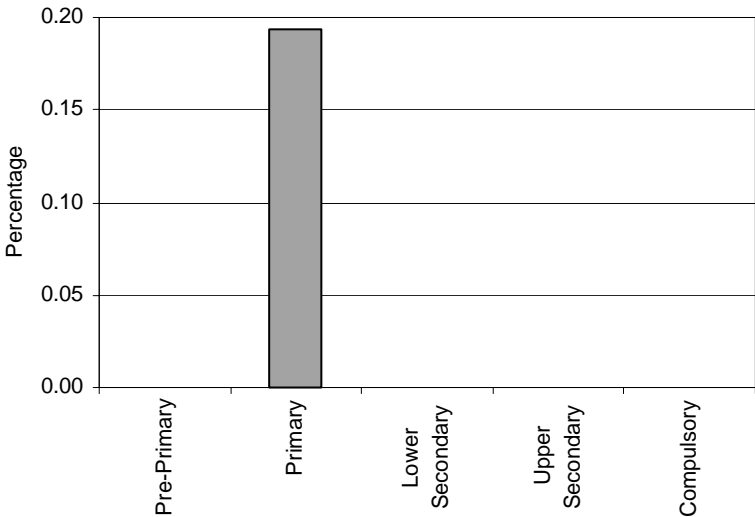
Note: Special classes data in pre-primary education are not applicable.  
 Special classes data in lower secondary and upper secondary education are included in primary data.  
 Special classes data in compulsory education are missing.

**Regular Classes - Category 2. Total percentage of students with hearing impairments falling within the resources definition, by phase of education**



Note: Regular classes data in pre-primary education are not applicable.  
 Regular classes data in lower secondary, upper secondary and compulsory education are missing.

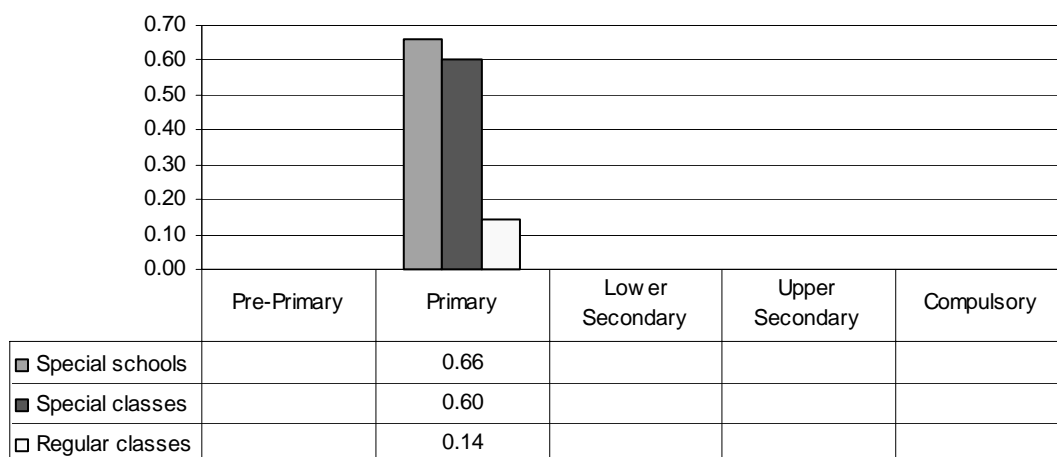
**Total - Category 2. Total percentage of students with hearing impairments falling within the resources definition, by phase of education**



Note: Special schools data in pre-primary education are not applicable.  
 Special schools data in lower secondary, upper secondary and compulsory education are included in primary data.  
 Special classes data in pre-primary education are not applicable.  
 Special classes data in lower secondary and upper secondary education are included in primary data.  
 Special classes data in compulsory education are missing.  
 Regular classes data in pre-primary education are not applicable.  
 Regular classes data in lower secondary, upper secondary and compulsory education are missing.

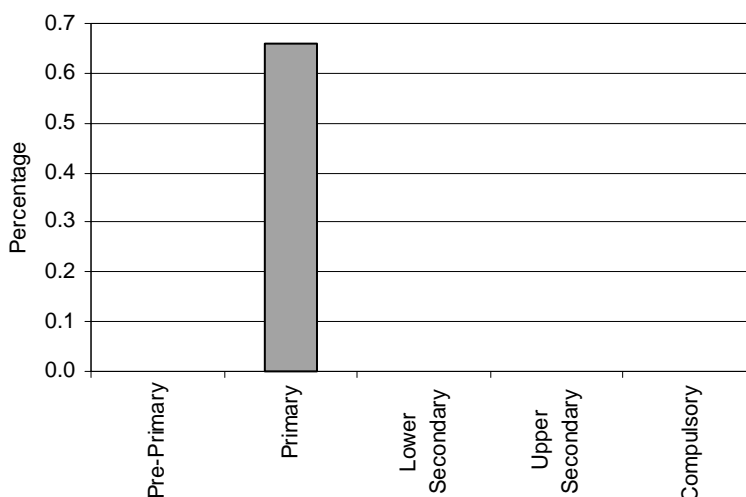
Category 3 Cross-national Category A - Pupils with mild mental handicap have significantly below average intellectual functioning, associated with impairment in adaptive behaviour. Such pupils would lie within the IQ range 50-70.

**Proportion of students with mild mental handicaps by phases of education in special schools, special classes and regular classes**



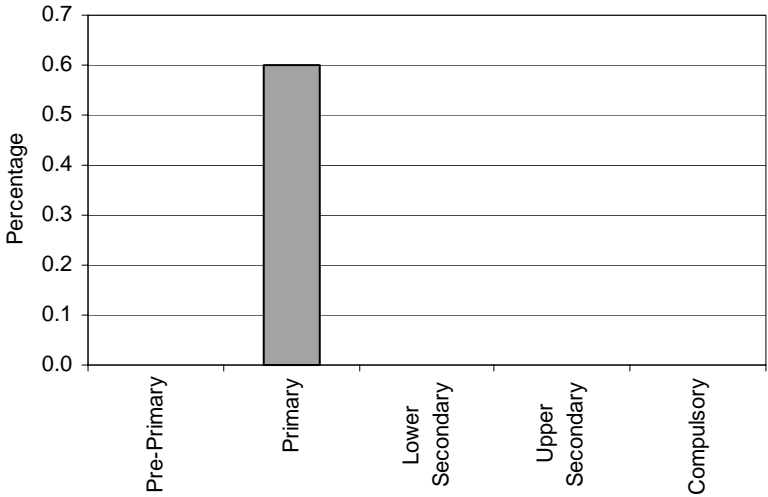
Note: Special schools data in pre-primary education are not applicable.  
 Special schools data in lower secondary, upper secondary and compulsory education are included in primary data.  
 Special classes data in pre-primary education are not applicable.  
 Special classes data in lower secondary, upper secondary and compulsory education are missing.  
 Regular classes data in pre-primary education are not applicable.  
 Regular classes data in lower secondary, upper secondary and compulsory education are missing.

**Special Schools - Category 3. Total percentage of students with a mild mental handicap falling within the resources definition, by phase of education**



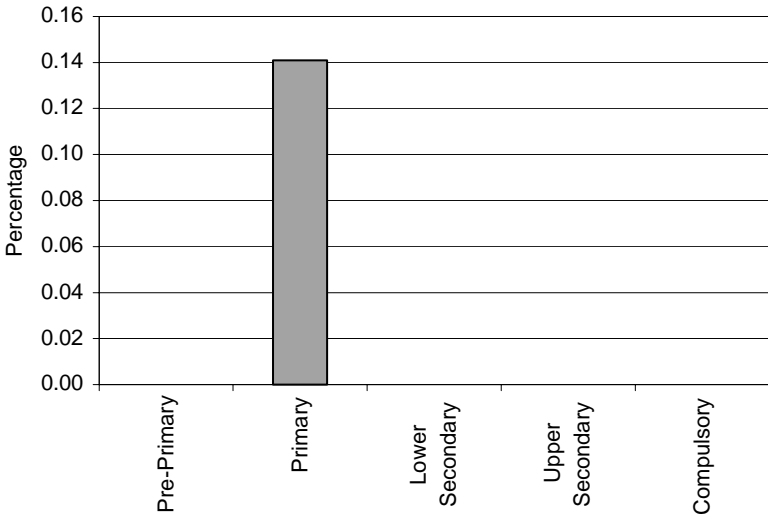
Note: Special schools data in pre-primary education are not applicable.  
 Special schools data in lower secondary, upper secondary and compulsory education are included in primary data.

**Special Classes - Category 3. Total percentage of students with a mild mental handicap falling within the resources definition, by phase of education**



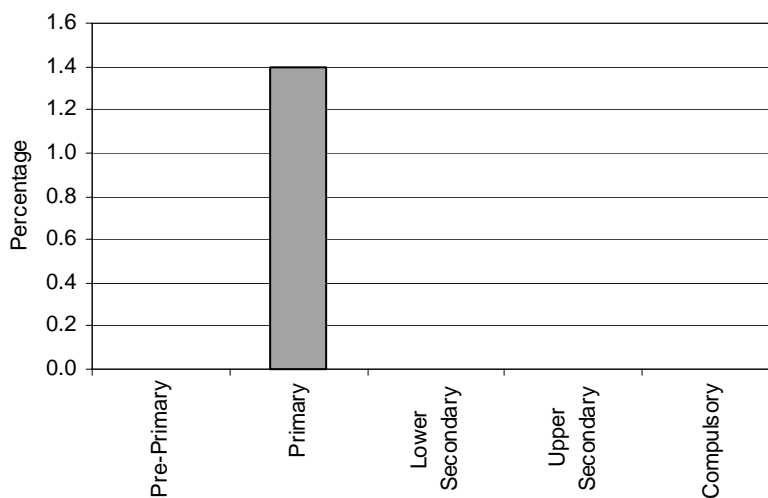
Note: Special classes data in pre-primary education are not applicable.  
 Special classes data in lower secondary, upper secondary and compulsory education are missing.

**Regular Classes - Category 3. Total percentage of students with a mild mental handicap falling within the resources definition, by phase of education**



Note: Regular classes data in pre-primary education are not applicable.  
 Regular classes data in lower secondary, upper secondary and compulsory education are missing.

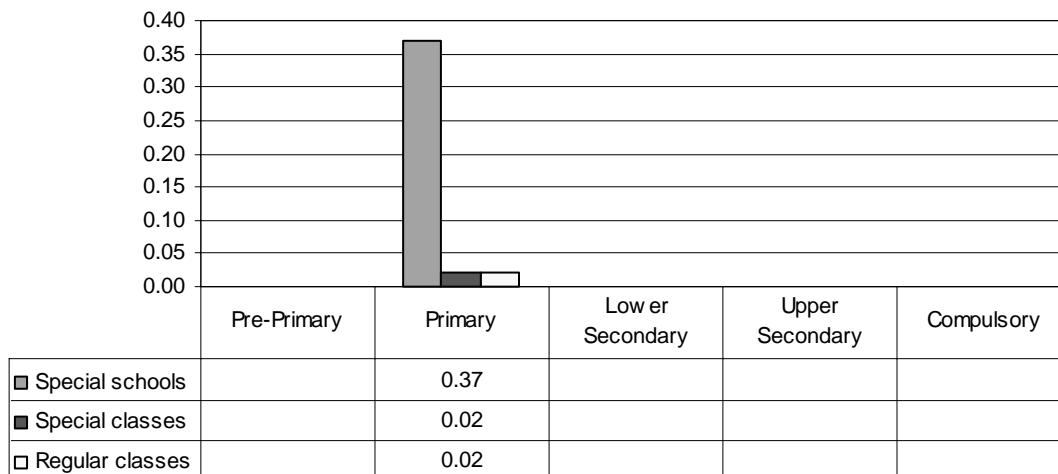
**Total - Category 3. Total percentage of students with a mild mental handicap falling within the resources definition**



Note: Special schools data in pre-primary education are not applicable.  
Special schools data in lower secondary, upper secondary and compulsory education are included in primary data.  
Special classes data in pre-primary education are not applicable.  
Special classes data in lower secondary, upper secondary and compulsory education are missing.  
Regular classes data in pre-primary education are not applicable.  
Regular classes data in lower secondary, upper secondary and compulsory education are missing.

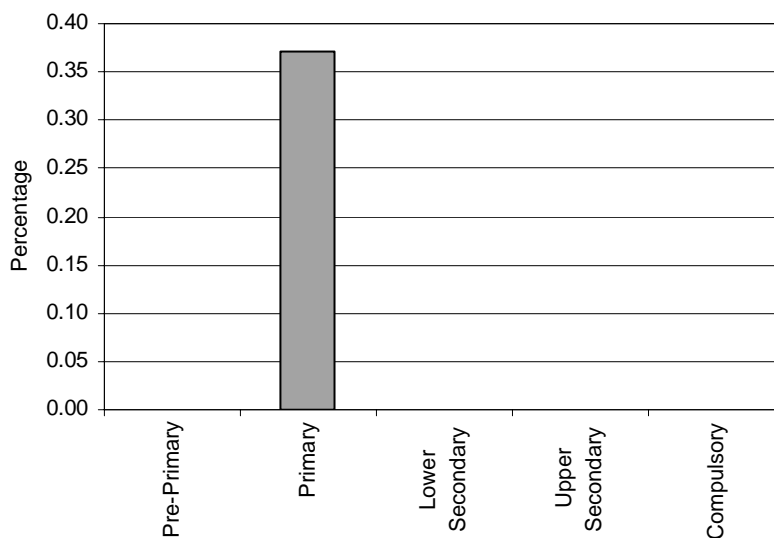
Category 4 Cross-national Category A - Pupils with moderate mental handicap fall within the IQ range 35-50, insofar as an intelligence quotient may be used as an indicator of a general learning disability. Many of these children will have accompanying disabilities.

**Proportion of students with moderate mental handicaps by phases of education in special schools, special classes and regular classes**



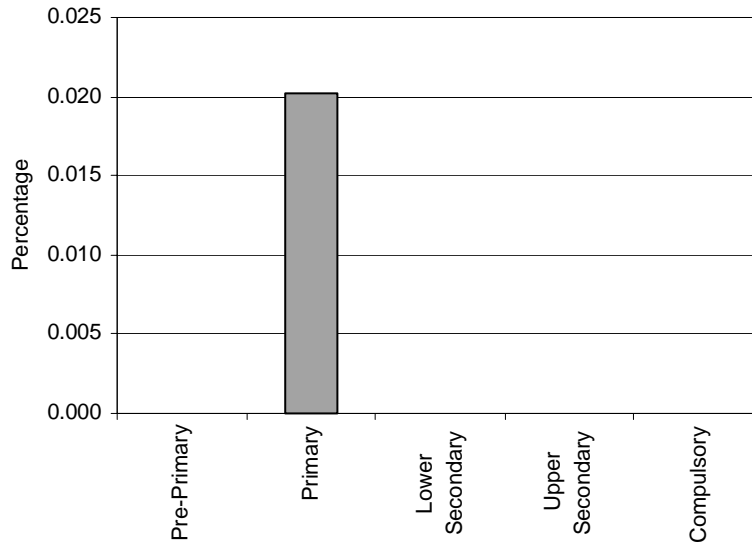
Note: Special schools data in pre-primary education are not applicable.  
 Special schools data in lower secondary, upper secondary and compulsory education are included in primary data.  
 Special classes data in pre-primary and upper secondary education are not applicable.  
 Special classes data in lower secondary and compulsory education are missing.  
 Regular classes data in pre-primary education are not applicable.  
 Regular classes data in lower secondary, upper secondary and compulsory education are missing.

**Special Schools - Category 4. Total percentage of students with a moderate mental handicap falling within the resources definition, by phase of education**



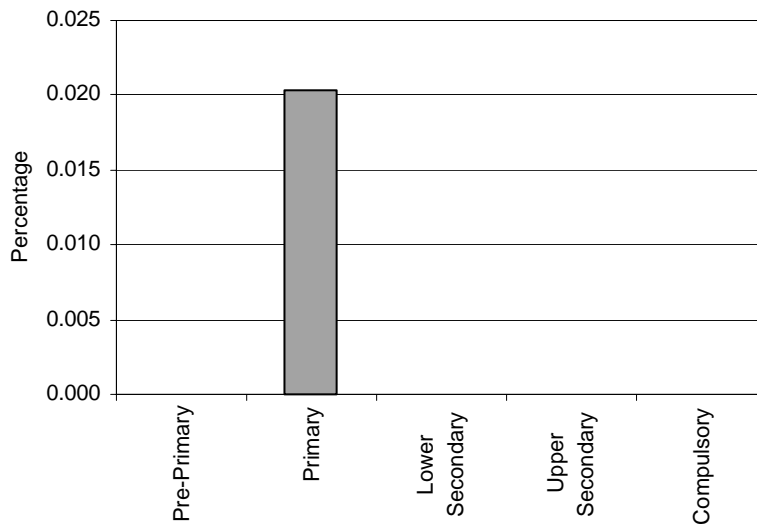
Note: Special schools data in pre-primary education are not applicable.  
 Special schools data in lower secondary, upper secondary and compulsory education are included in primary data.

**Special Classes - Category 4. Total percentage of students with a moderate mental handicap falling within the resources definition, by phase of education**



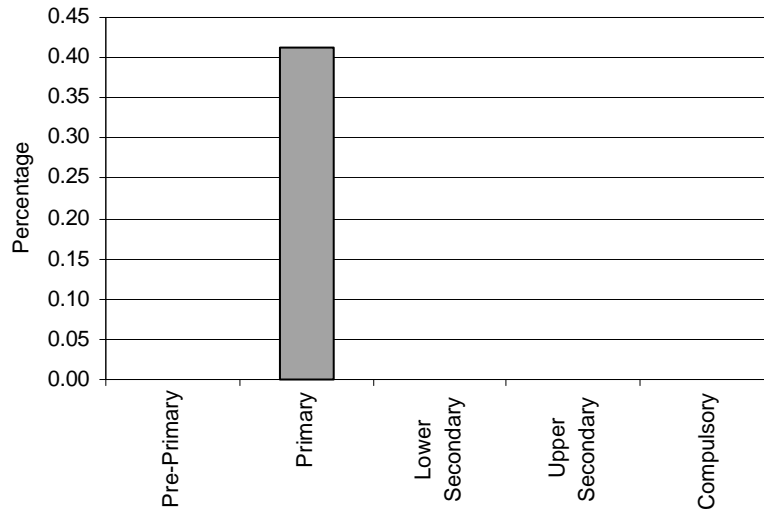
Note: Special classes data in pre-primary and upper secondary education are not applicable. Special classes data in lower secondary and compulsory education are missing.

**Regular Classes - Category 4. Total percentage of students with a moderate mental handicap falling within the resources definition, by phase of education**



Note: Regular classes data in pre-primary education are not applicable. Regular classes data in lower secondary, upper secondary and compulsory education are missing.

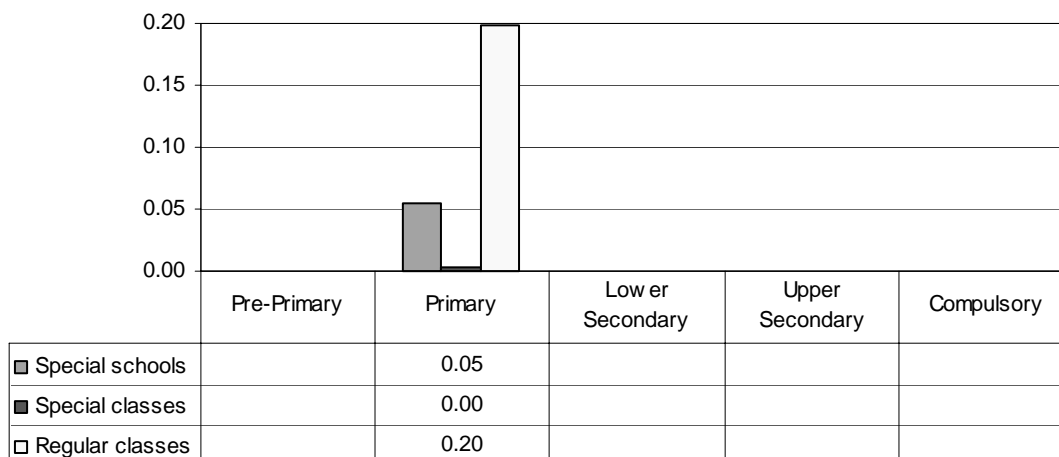
**Total - Category 4. Total percentage of students with a moderate mental handicap falling within the resources definition**



Note: Special schools data in pre-primary education are not applicable.  
Special schools data in lower secondary, upper secondary and compulsory education are included in primary data.  
Special classes data in pre-primary and upper secondary education are not applicable.  
Special classes data in lower secondary and compulsory education are missing.  
Regular classes data in pre-primary education are not applicable.  
Regular classes data in lower secondary, upper secondary and compulsory education are missing.

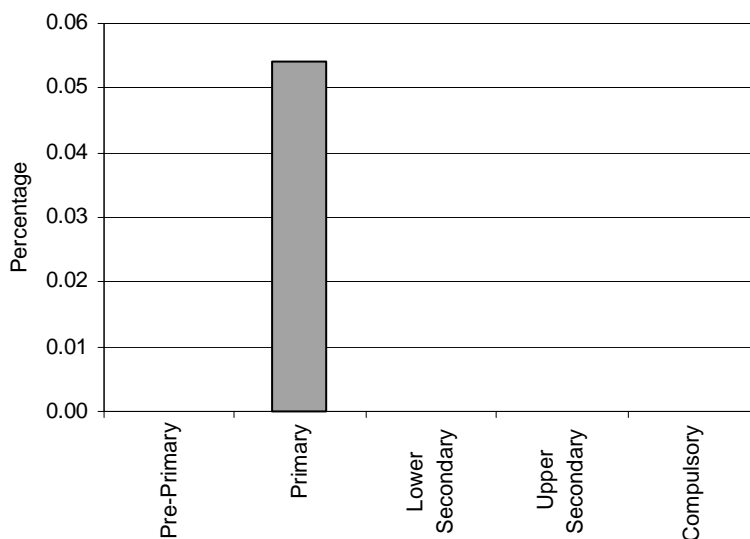
*Category 5 Cross-national Category B* - This term includes pupils with behavioural and conduct disorders as well as those with emotional disturbance. Emotional disturbance and/or behavioural disorder is defined as an abnormality of behaviour sufficiently marked and prolonged to cause handicap in the pupil and/or serious distress or disturbance in the family, school or community.

**Proportion of students with emotionally disturbed students by phases of education in special schools, special classes and regular classes**



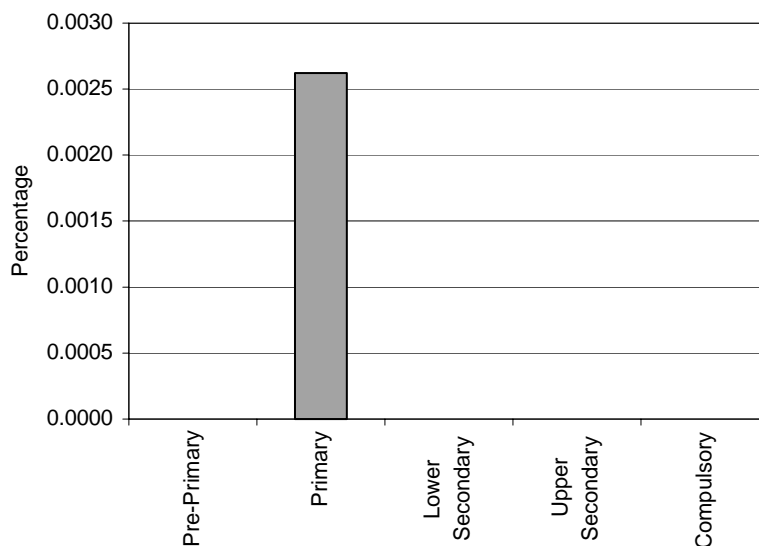
Note: Special schools data in pre-primary education are not applicable.  
 Special schools data in lower secondary, upper secondary and compulsory education are included in primary data.  
 Special classes data in pre-primary, lower secondary and upper secondary education are not applicable.  
 Special classes data in compulsory education are missing.  
 Regular classes data in pre-primary education are not applicable.  
 Regular classes data in lower secondary, upper secondary and compulsory education are missing.

**Special Schools - Category 5 Total percentage of emotionally disturbed students falling within the resources definition, by phase of education**



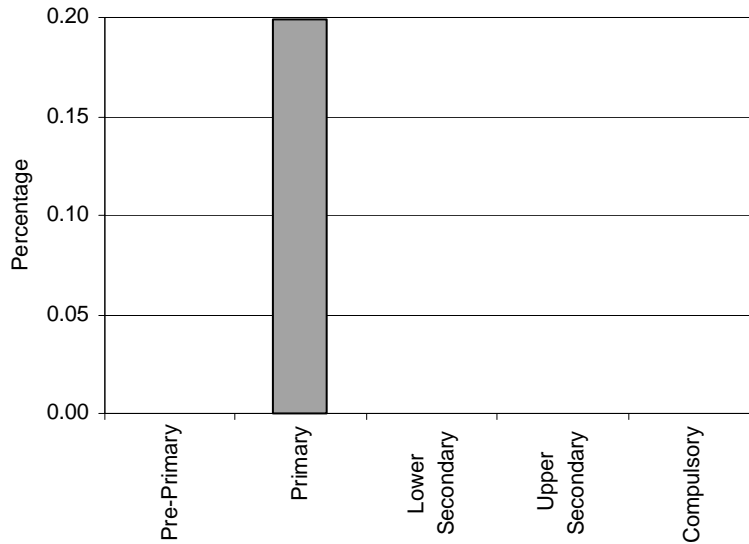
Note: Special schools data in pre-primary education are not applicable. Special schools data in lower secondary, upper secondary and compulsory education are included in primary data.

**Special Classes - Category 5. Total percentage of emotionally disturbed students falling within the resources definition, by phase of education**



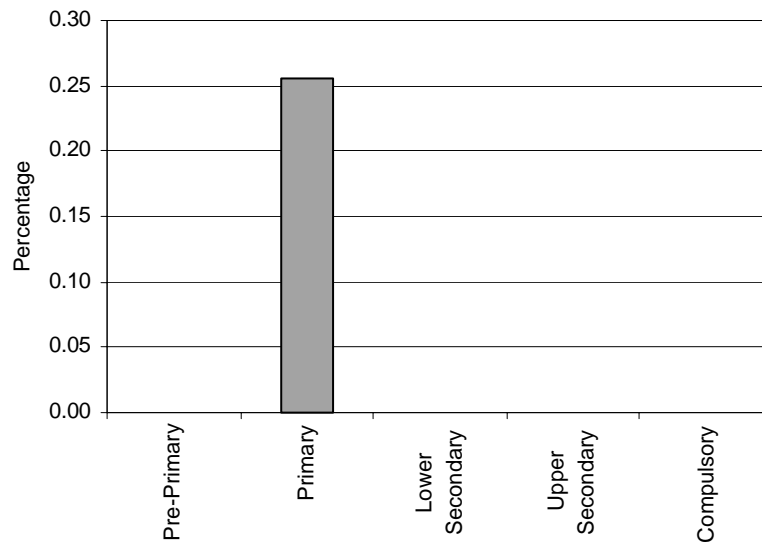
Note: Special classes data in pre-primary, lower secondary and upper secondary education are not applicable. Special classes data in compulsory education are missing.

**Regular Classes - Category 5. Total percentage of emotionally disturbed students falling within the resources definition, by phase of education**



Note: Regular classes data in pre-primary education are not applicable.  
Regular classes data in lower secondary, upper secondary and compulsory education are missing.

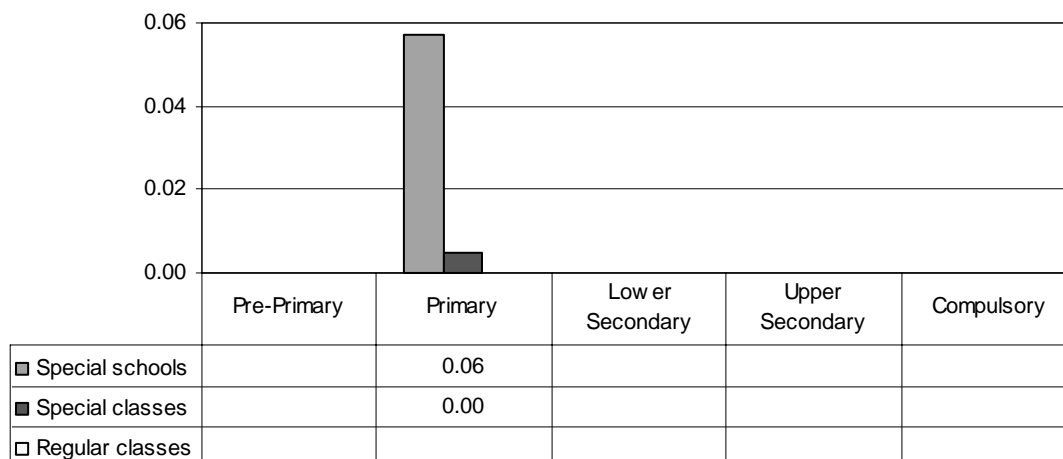
**Total - Category 5. Total percentage of emotionally disturbed students falling within the resources definition**



Note: Special schools data in pre-primary education are not applicable.  
Special schools data in lower secondary, upper secondary and compulsory education are included in primary data.  
Special classes data in pre-primary, lower secondary and upper secondary education are not applicable.  
Special classes data in compulsory education are missing.  
Regular classes data in pre-primary education are not applicable.  
Regular classes data in lower secondary, upper secondary and compulsory education are missing.

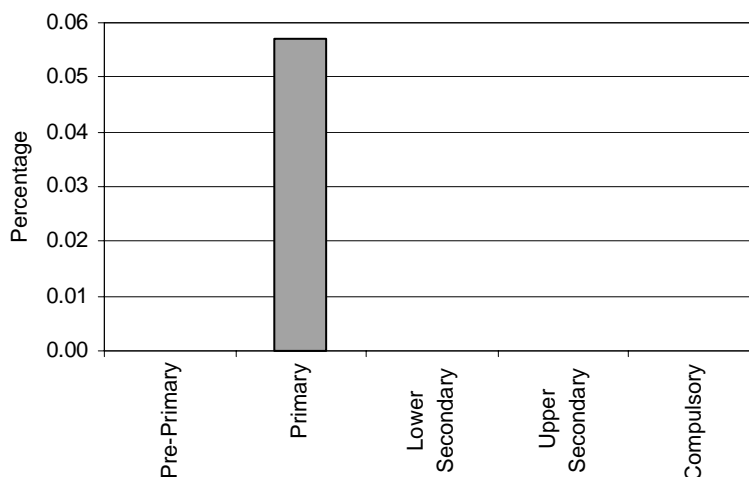
Category 6 Cross-national Category B - As above (cat. 5) to a more severe level.

**Proportion of students with severely emotionally disturbed by phases of education in special schools, special classes and regular classes**



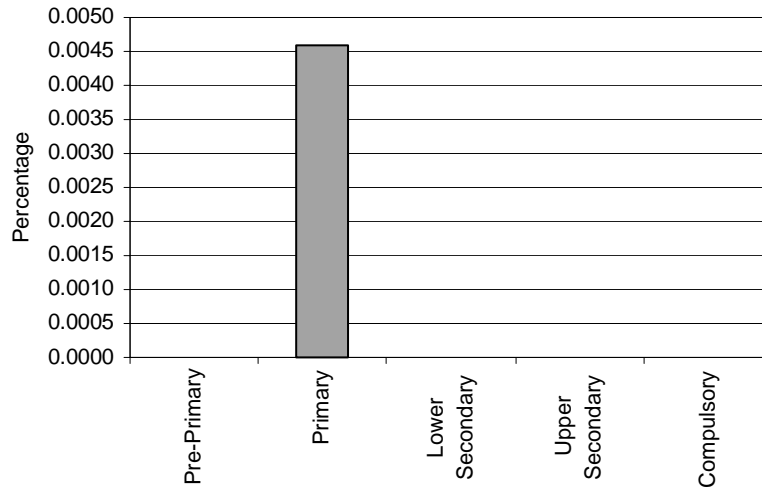
Note: Special schools data in pre-primary education are not applicable.  
 Special schools data in lower secondary, upper secondary and compulsory education are included in primary data.  
 Special classes data in pre-primary education are not applicable.  
 Special classes data in lower secondary, upper secondary and compulsory education are missing.  
 Regular classes data are included in category 5 data.

**Special Schools - Category 6. Total percentage of severely emotionally disturbed students falling within the resources definition, by phase of education**



Note: Special schools data in pre-primary education are not applicable.  
 Special schools data in lower secondary, upper secondary and compulsory education are included in primary data.

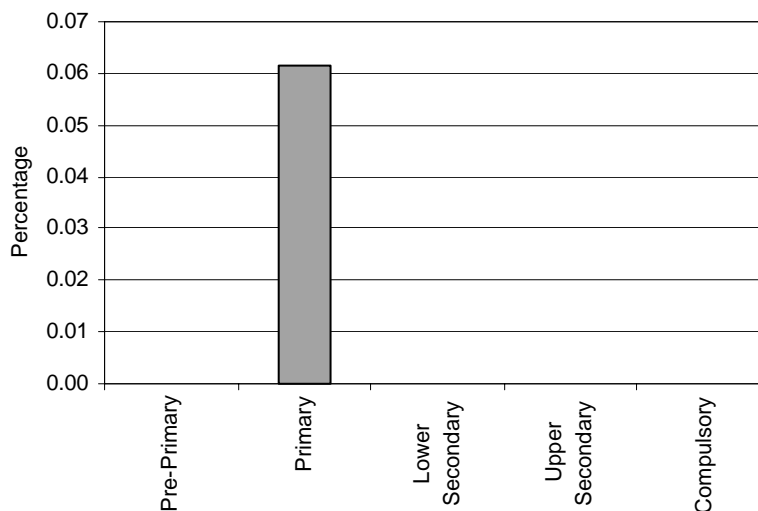
**Special Classes - Category 6. Total percentage of severely emotionally disturbed students falling within the resources definition, by phase of education**



Note: Special classes data in pre-primary education are not applicable.  
Special classes data in lower secondary, upper secondary and compulsory education are missing.

**Regular Classes – Category 6. Severely emotionally disturbed**  
**INCLUDED IN CATEGORY 5**

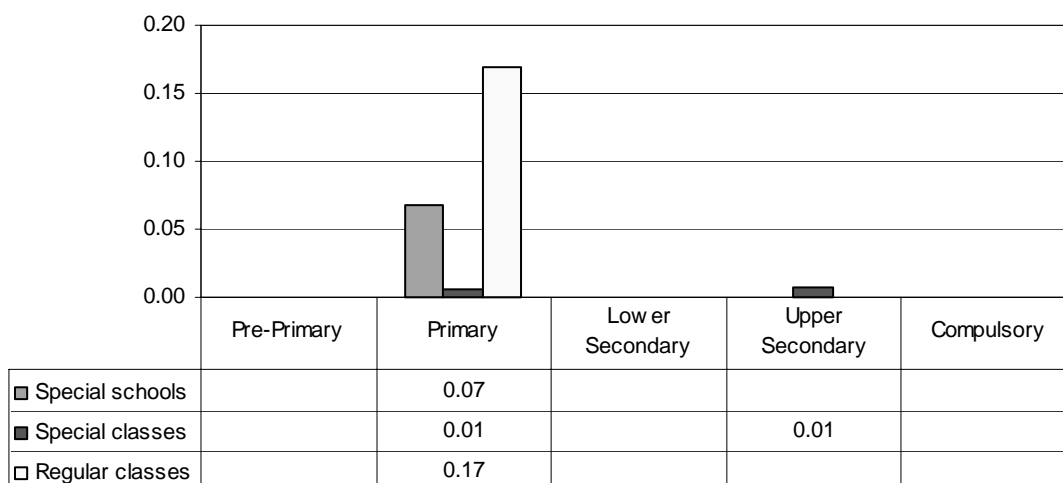
**Total - Category 6. Total percentage of severely emotionally disturbed students falling within the resources definition**



Note: Special schools data in pre-primary education are not applicable.  
Special schools data in lower secondary, upper secondary and compulsory education are included in primary data.  
Special classes data in pre-primary education are not applicable.  
Special classes data in lower secondary, upper secondary and compulsory education are missing.  
Regular classes data are included in category 5 data.

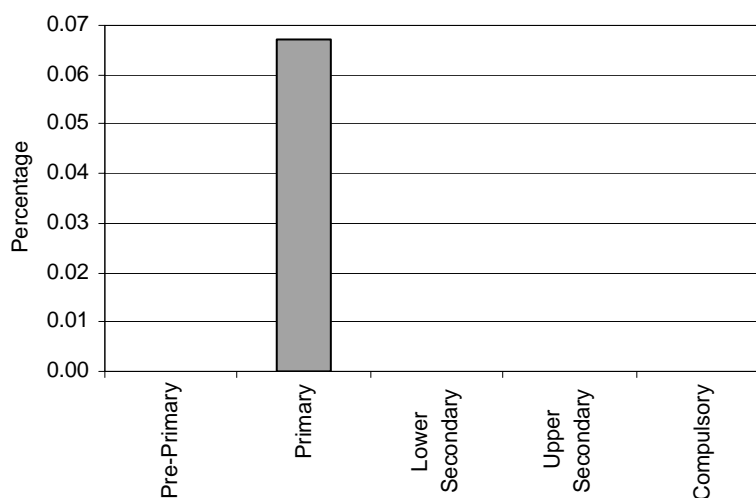
Category 7 Cross-national Category A - Pupils with physical handicap have permanent or protracted disabilities arising from conditions such as congenital deformities, spina bifida and/or hydrocephalus, muscular dystrophy, cerebral palsy, brittle bones, haemophilia, cystic fibrosis, asthma or severe accidental injury.

**Proportion of students with physical handicaps by phases of education in special schools, special classes and regular classes**



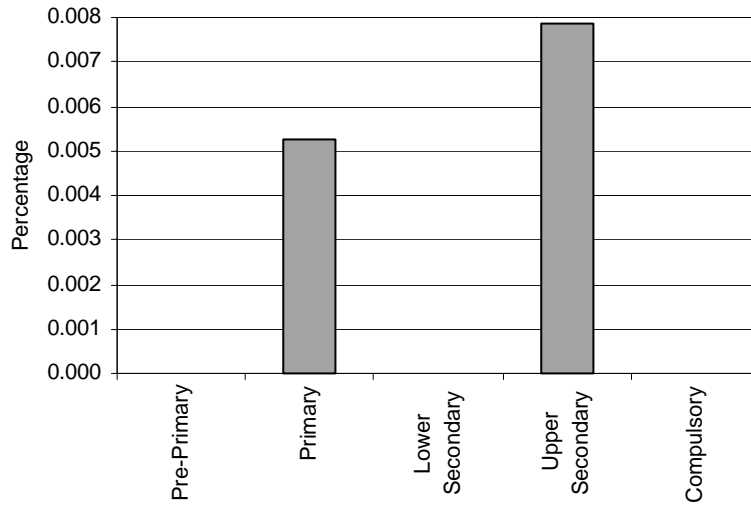
Note: Special schools data in pre-primary education are not applicable.  
 Special schools data in lower secondary, upper secondary and compulsory education are included in primary data.  
 Special classes data in pre-primary education are not applicable.  
 Special classes data in lower secondary and compulsory education are missing.  
 Regular classes data in pre-primary education are not applicable.  
 Regular classes data in lower secondary, upper secondary and compulsory education are missing.

**Special Schools - Category 7. Total percentage of students with a physical handicap falling within the resources definition, by phase of education**



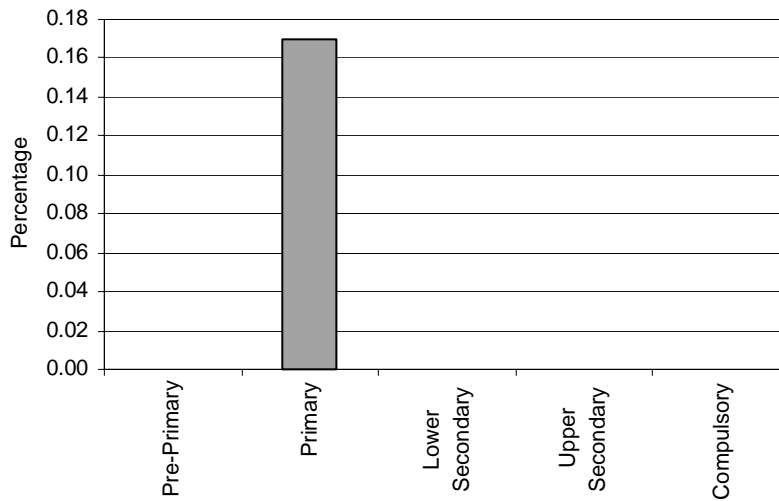
Note: Special schools data in pre-primary education are not applicable.  
 Special schools data in lower secondary, upper secondary and compulsory education are included in primary data.

**Special Classes - Category 7. Total percentage of students with a physical handicap falling within the resources definition, by phase of education**



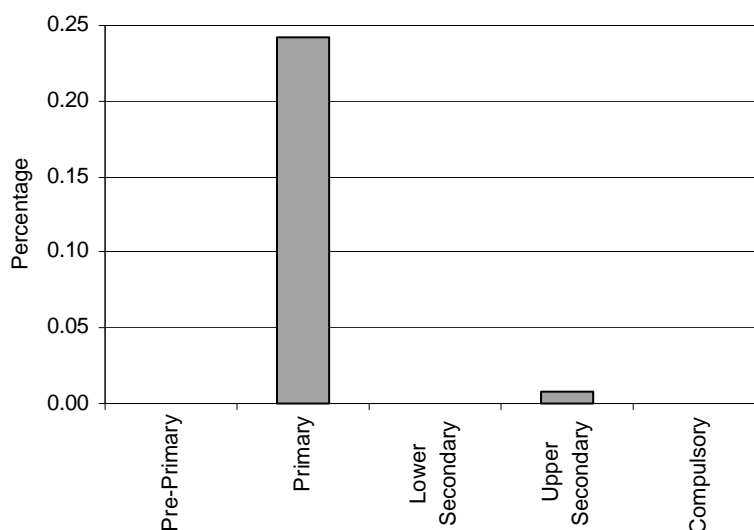
Note: Special classes data in pre-primary education are not applicable.  
Special classes data in lower secondary and compulsory education are missing.

**Regular Classes - Category 7. Total percentage of students with a physical handicap falling within the resources definition, by phase of education**



Note: Regular classes data in pre-primary education are not applicable.  
Regular classes data in lower secondary, upper secondary and compulsory education are missing.

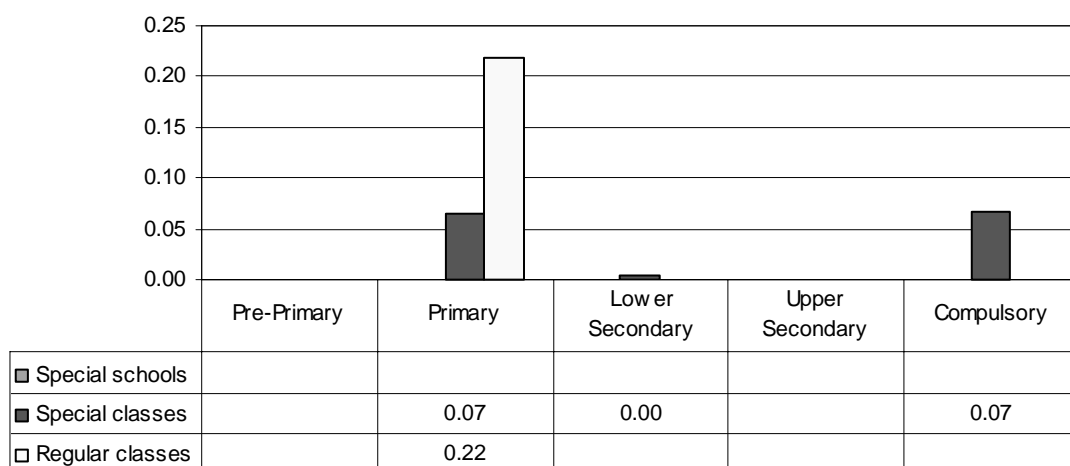
**Total - Category 7. Total percentage of students with a physical handicap falling within the resources definition**



Note: Special schools data in pre-primary education are not applicable.  
Special schools data in lower secondary, upper secondary and compulsory education are included in primary data.  
Special classes data in pre-primary education are not applicable.  
Special classes data in lower secondary and compulsory education are missing.  
Regular classes data in pre-primary education are not applicable.  
Regular classes data in lower secondary, upper secondary and compulsory education are missing.

*Category 8 Cross-national Category A* - Children with specific speech and language disorders are those whose non-verbal ability is in the average range, or higher, and whose skill in understanding or expressing themselves through the medium of spoken language is severely impaired.

**Proportion of students with specific speech and language disorders by phases of education in special schools, special classes and regular classes**

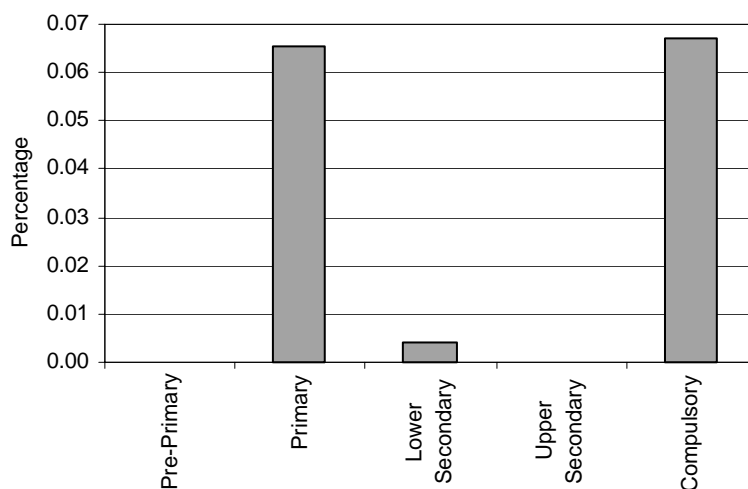


Note: Special schools data are not applicable.  
 Special classes data in pre-primary and upper secondary education are not applicable.  
 Regular classes data in pre-primary education are not applicable.  
 Regular classes data in lower secondary, upper secondary and compulsory education are missing.

**Special Schools – Category 8. Specific speech and language disorders**

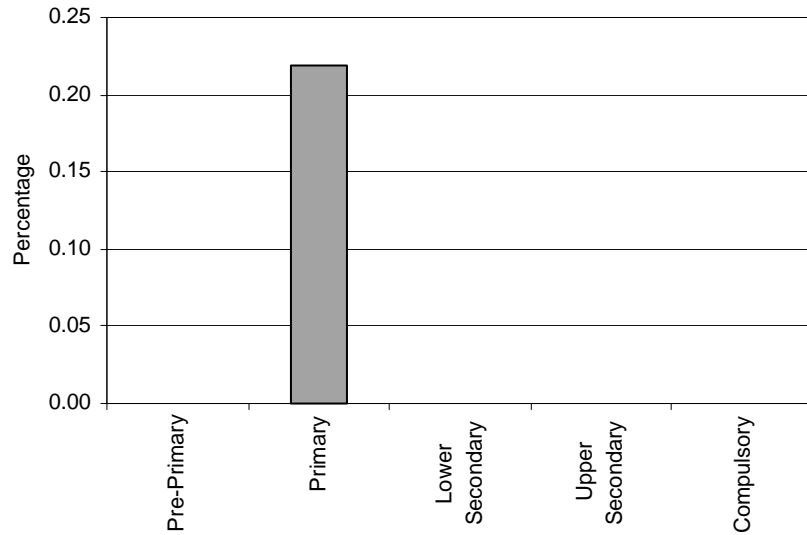
NOT APPLICABLE

**Special Classes - Category 8. Total percentage of students with specific speech and language disorders falling within the resources definition, by phase of education**



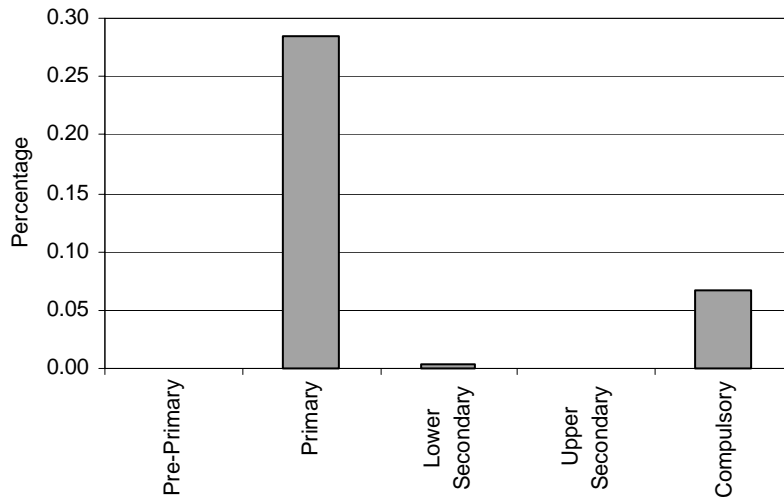
Note: Special classes data in pre-primary and upper secondary education are not applicable.

**Regular Classes - Category 8. Total percentage of students with specific speech and language disorders falling within the resources definition, by phase of education**



Note: Regular classes data in pre-primary education are not applicable.  
Regular classes data in lower secondary, upper secondary and compulsory education are missing.

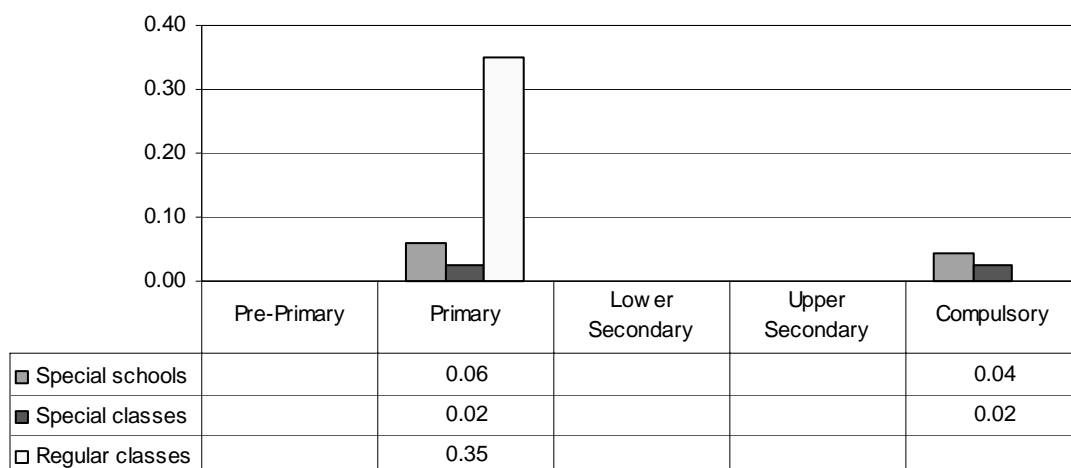
**Total - Category 8. Total percentage of students with specific speech and language disorders falling within the resources definition**



Note: Special schools data are not applicable.  
Special classes data in pre-primary and upper secondary education are not applicable.  
Regular classes data in pre-primary education are not applicable.  
Regular classes data in lower secondary, upper secondary and compulsory education are missing.

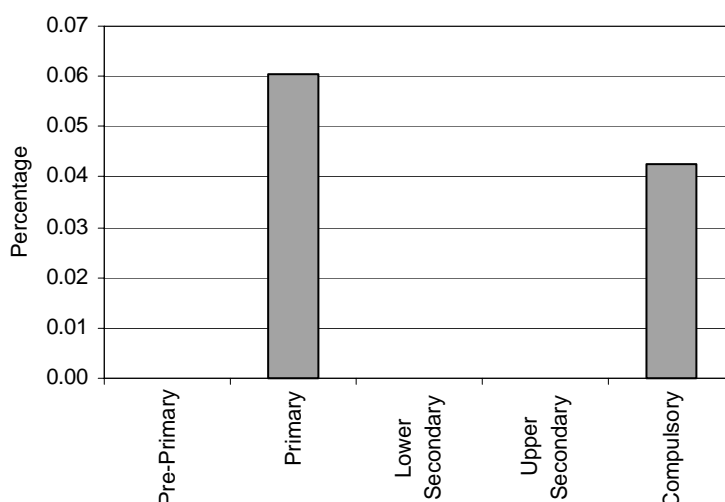
*Category 9 Cross-national Category A* - Children with specific learning disability have significant impairments in either reading, writing, spelling or arithmetical notation and it is established that the primary cause of such impairments is not attributable to below average intellectual range, to defective sight/hearing, to emotional factors, to any physical condition or to any extrinsic adverse circumstances.

**Proportion of students with a specific learning disability by phases of education in special schools, special classes and regular classes**



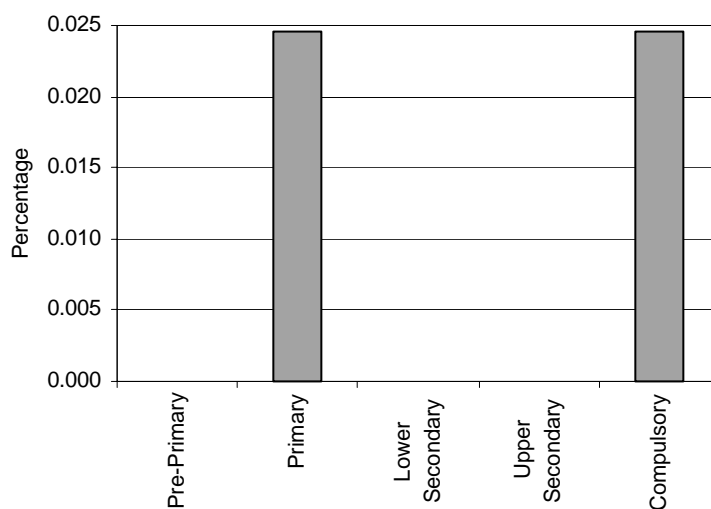
Note: Special schools data in pre-primary education are not applicable.  
 Special schools data in lower secondary and upper secondary education are included in primary data.  
 Special classes data in pre-primary, lower secondary and upper secondary education are not applicable.  
 Regular classes data in pre-primary education are not applicable.  
 Regular classes data in lower secondary, upper secondary and compulsory education are missing.

**Special Schools - Category 9. Total percentage of students with specific a specific learning disability falling within the resources definition, by phase of education**



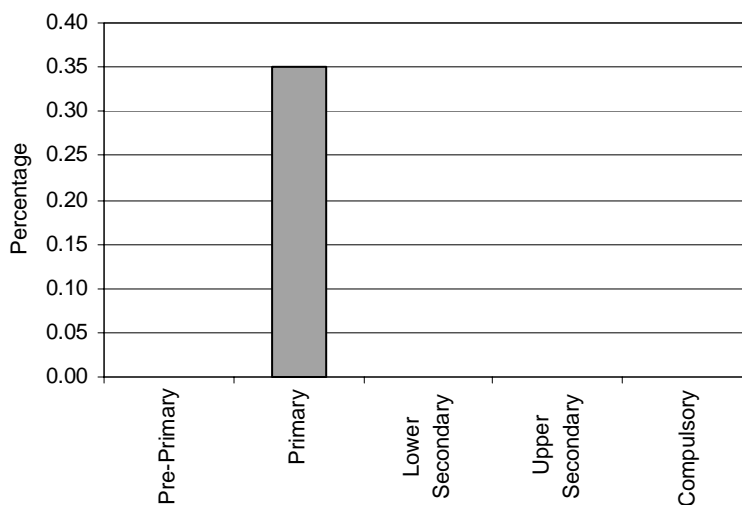
Note: Special schools data in pre-primary education are not applicable.  
 Special schools data in lower secondary and upper secondary education are included in primary data.

**Special Classes - Category 9. Total percentage of students with specific a specific learning disability falling within the resources definition, by phase of education**



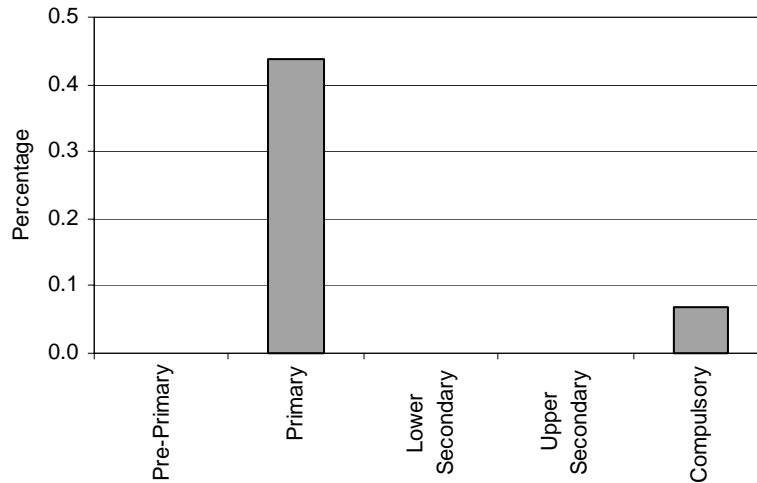
Note: Special classes data in pre-primary, lower secondary and upper secondary education are not applicable.

**Regular Classes - Category 9. Total percentage of students with specific a specific learning disability falling within the resources definition, by phase of education**



Note: Regular classes data in pre-primary education are not applicable.  
Regular classes data in lower secondary, upper secondary and compulsory education are missing.

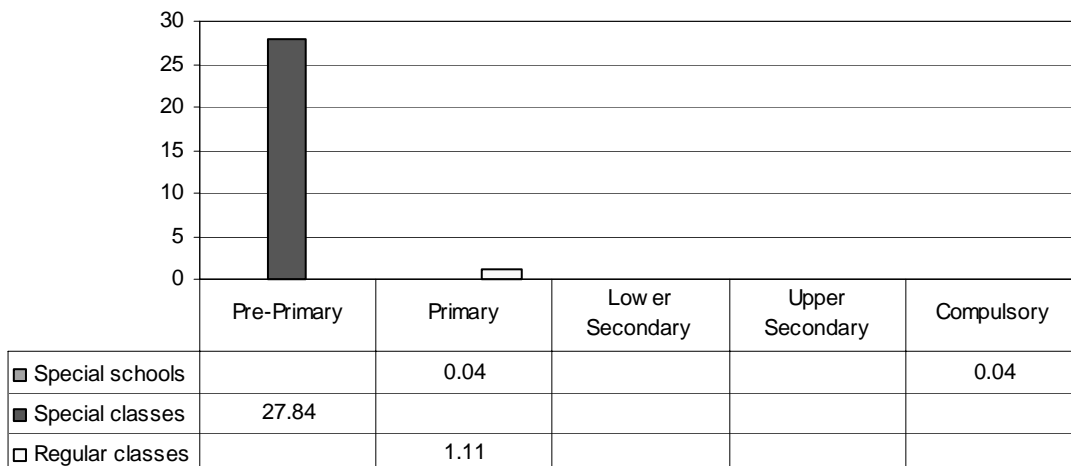
**Total - Category 9. Total percentage of students with specific a specific learning disability falling within the resources definition**



Note: Special schools data in pre-primary education are not applicable.  
 Special schools data in lower secondary and upper secondary education are included in primary data.  
 Special classes data in pre-primary, lower secondary and upper secondary education are not applicable.  
 Regular classes data in pre-primary education are not applicable.  
 Regular classes data in lower secondary, upper secondary and compulsory education are missing.

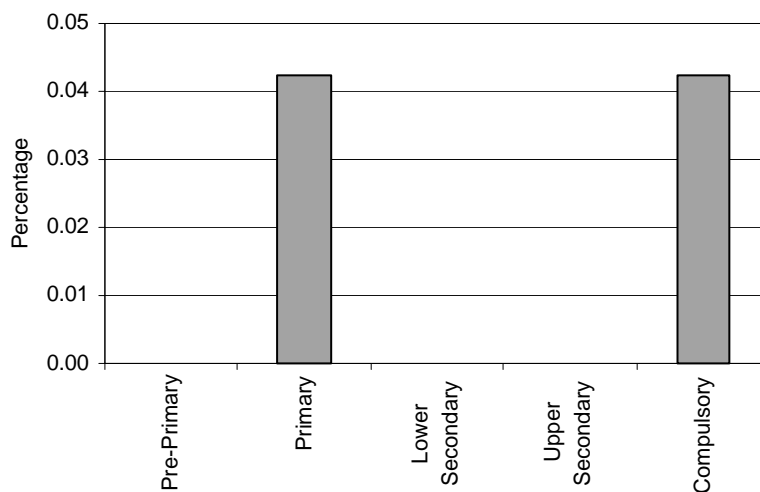
*Category 10 Cross-national Category C* - Traveller children are children of families who are identified by themselves and by members of the "settled" community as people with a distinctive lifestyle, traditionally of a nomadic nature even though not now habitually so.

**Proportion of classes of children of travelling families by phases of education in special schools, special classes and regular classes**



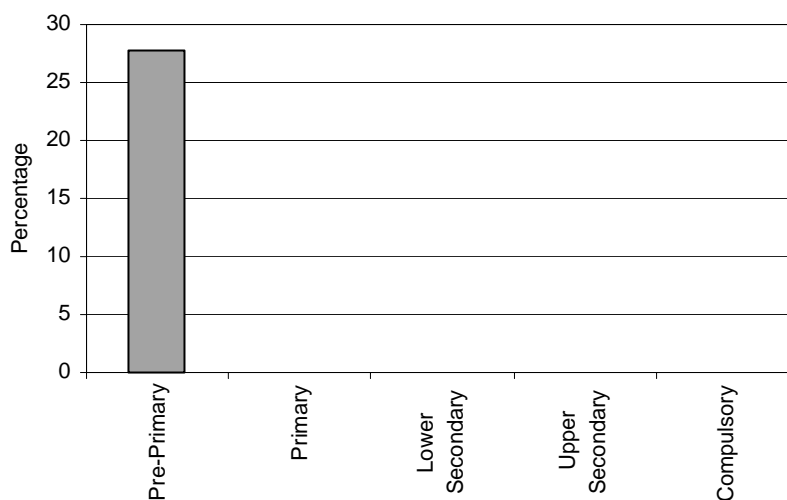
Note: Special schools data in pre-primary education are not applicable.  
 Special schools data in lower secondary and upper secondary education are included in primary data.  
 Special classes data in primary, lower secondary, upper secondary and compulsory education are not applicable.  
 Regular classes data in pre-primary education are not applicable.  
 Regular classes data in lower secondary, upper secondary and compulsory education are missing.

**Special School - Category 10. Total percentage of classes of children of travelling families falling within the resources definition, by phase of education**



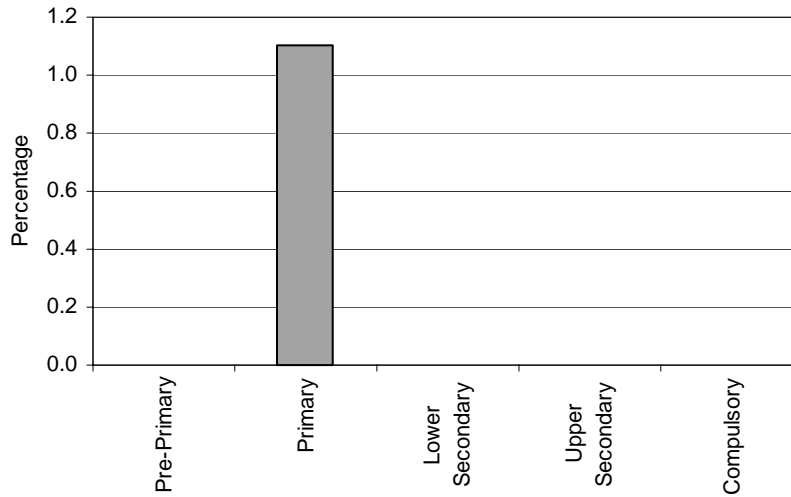
Note: Special schools data in pre-primary education are not applicable.  
Special schools data in lower secondary and upper secondary education are included in primary data.

**Special Classes - Category 10. Total percentage of classes of children of travelling families falling within the resources definition, by phase of education**



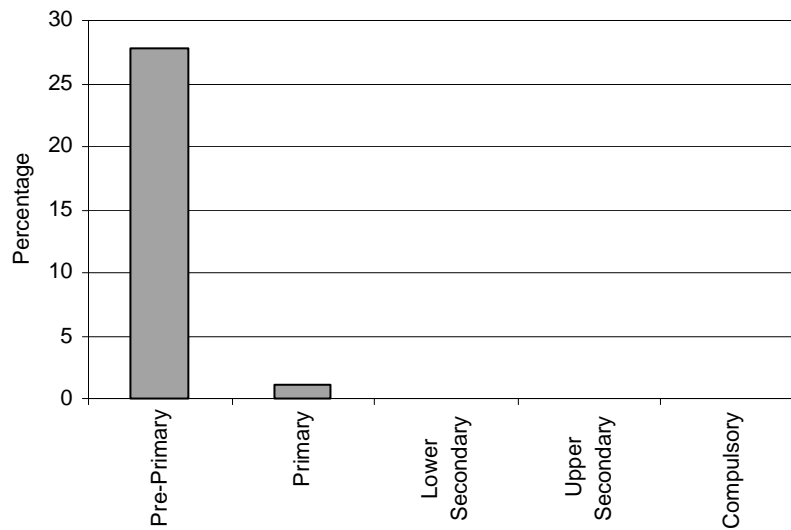
Note: Special classes data in primary, lower secondary, upper secondary and compulsory education are not applicable.

**Regular Classes - Category 10. Total percentage of classes of children of travelling families falling within the resources definition, by phase of education**



Note: Regular classes data in pre-primary education are not applicable.  
Regular classes data in lower secondary, upper secondary and compulsory education are missing.

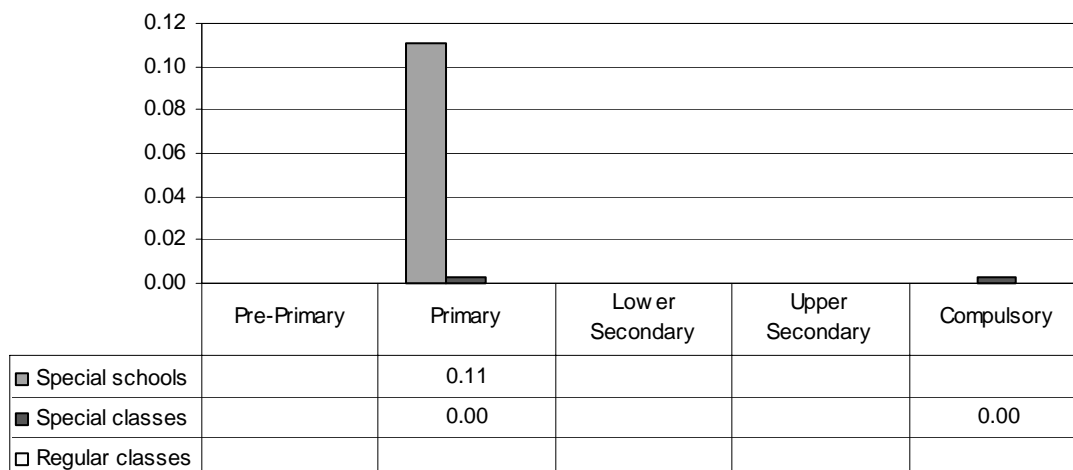
**Total - Category 10. Total percentage of classes of children of travelling families falling within the resources definition**



Note: Special schools data in pre-primary education are not applicable.  
Special schools data in lower secondary and upper secondary education are included in primary data.  
Special classes data in primary, lower secondary, upper secondary and compulsory education are not applicable.  
Regular classes data in pre-primary education are not applicable.  
Regular classes data in lower secondary, upper secondary and compulsory education are missing.

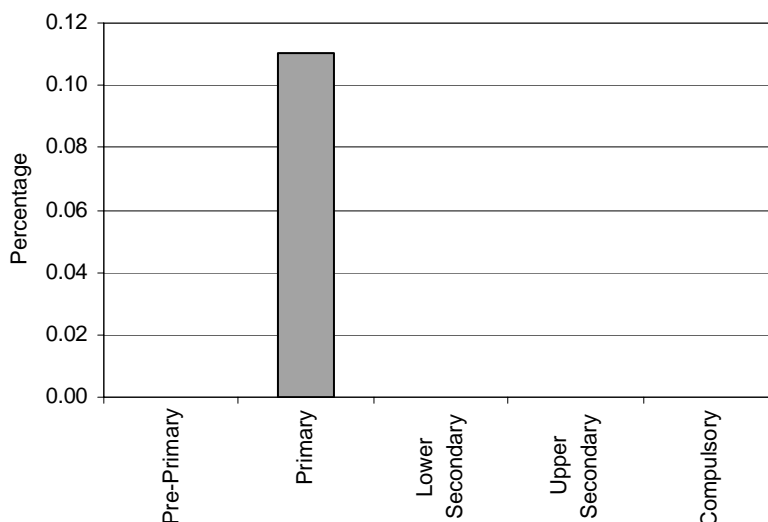
*Category 11 Cross-national Category A* - Children in this category are described as having an intelligence quotient of 35 or below. (Children with an IQ in 35-20 range are described as having a “severe” general learning disability. Children with an intelligence quotient under 20 are described as having a “profound” general learning disability.) Most children in this category will have additional disabilities.

**Proportion of students with severely & profoundly mentally handicaps by phases of education in special schools, special classes and regular classes**



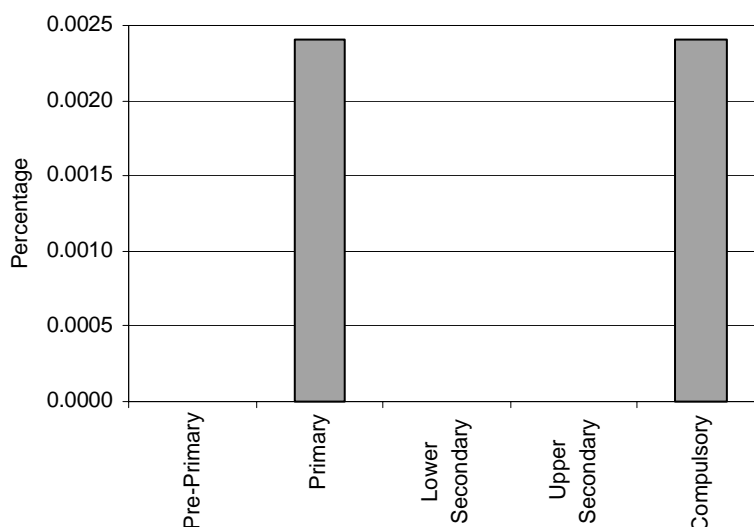
Note: Special schools data in pre-primary education are not applicable.  
 Special schools data in lower secondary, upper secondary and compulsory education are included in primary data.  
 Special classes data in pre-primary, lower secondary and upper secondary education are not applicable.  
 Regular classes data are not applicable.

**Special Schools - Category 11. Total percentage of severely & profoundly mentally handicapped students falling within the resources definition, by phase of education.**



Note: Special schools data in pre-primary education are not applicable.  
 Special schools data in lower secondary, upper secondary and compulsory education are included in primary data.

**Special Classes - Category 11. Total percentage of severely & profoundly mentally handicapped students falling within the resources definition, by phase of education**

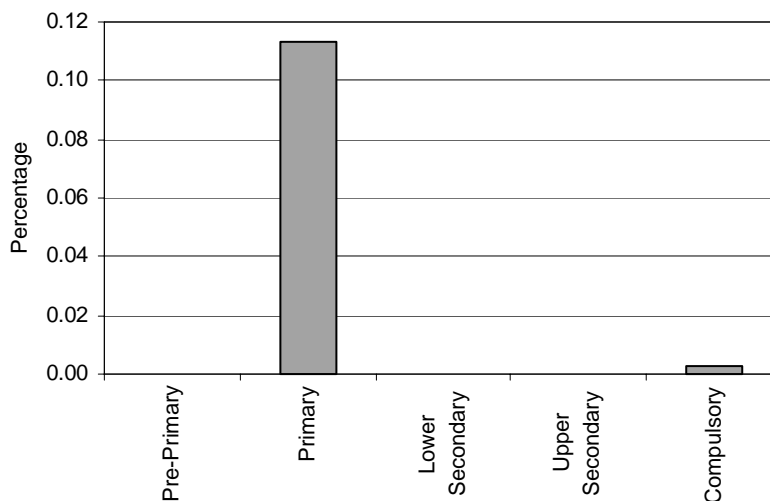


Note: Special classes data in pre-primary, lower secondary and upper secondary education are not applicable.

**Regular Classes – Category 11. Severely & profoundly mentally handicapped**

NOT APPLICABLE

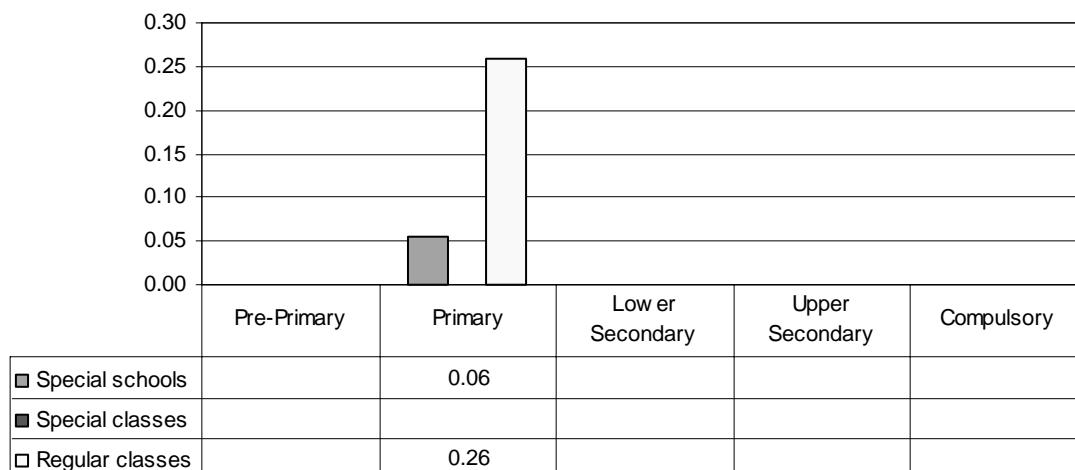
**Total - Category 11. Total percentage of severely & profoundly mentally handicapped students falling within the resources definition**



Note: Special schools data in pre-primary education are not applicable.  
 Special schools data in lower secondary, upper secondary and compulsory education are included in primary data.  
 Special classes data in pre-primary, lower secondary and upper secondary education are not applicable.  
 Regular classes data are not applicable.

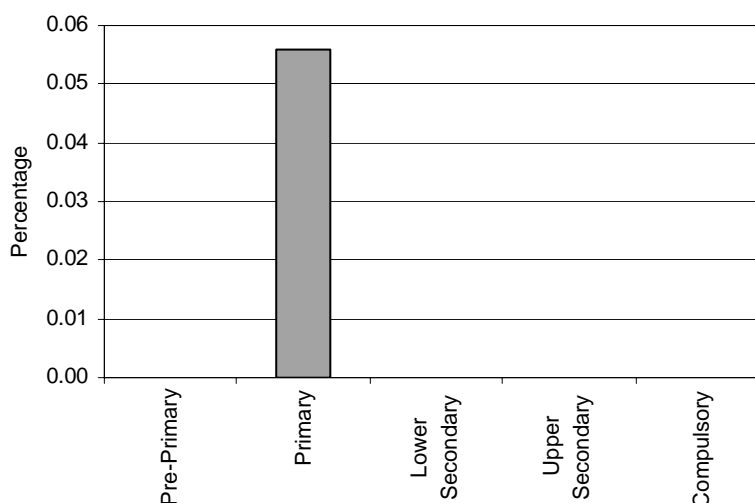
Category 12 Cross-national Category A - Children with two or more disabilities are described as having multiple disabilities.

**Proportion of students with multiple handicaps by phases of education in special schools, special classes and regular classes**



Note: Special schools data in pre-primary education are not applicable.  
 Special schools data in lower secondary and upper secondary education are included in primary data.  
 Special schools data in compulsory education are missing.  
 Special classes data are not applicable.  
 Regular classes data in pre-primary education are not applicable.  
 Regular classes data in lower secondary, upper secondary and compulsory education are missing.

**Special Schools - Category 12. Total percentage of multiple handicapped students falling within the resources definition, by phase of education**

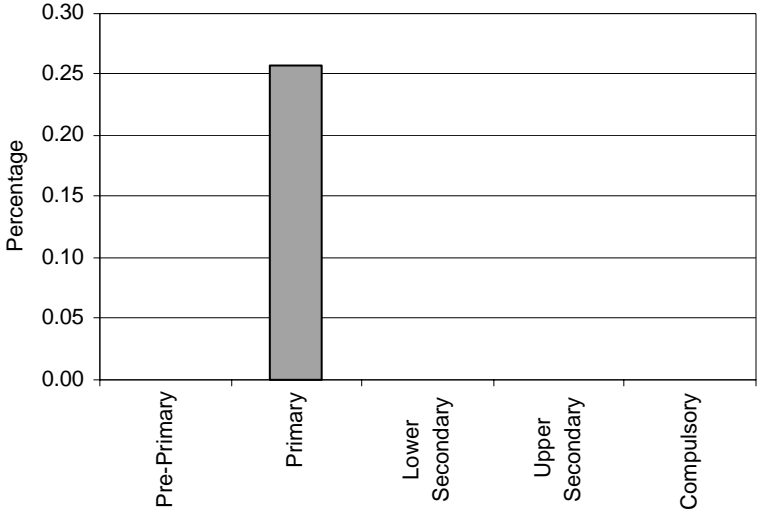


Note: Special schools data in pre-primary education are not applicable.  
 Special schools data in lower secondary and upper secondary education are included in primary data.  
 Special schools data in compulsory education are missing.

**Special Classes – Category 12. Multiply  
handicapped**

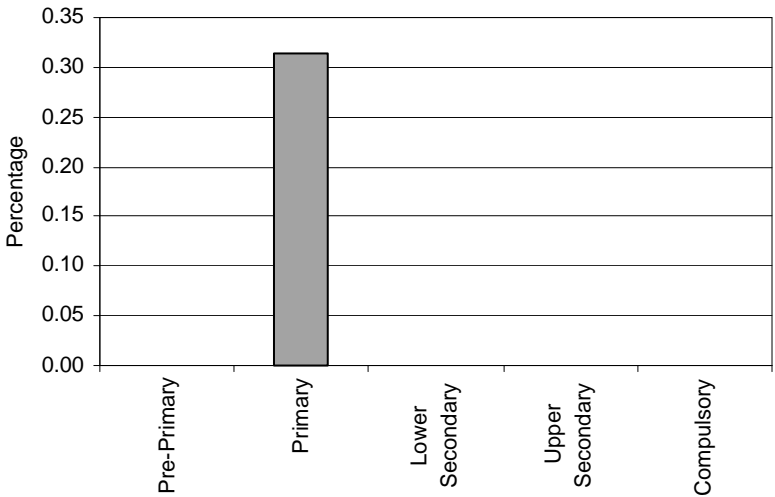
NOT APPLICABLE

**Regular Classes - Category 12. Total percentage of multiple handicapped students falling within the resources definition, by phase of education**



Note: Regular classes data in pre-primary education are not applicable.  
Regular classes data in lower secondary, upper secondary and compulsory education are missing.

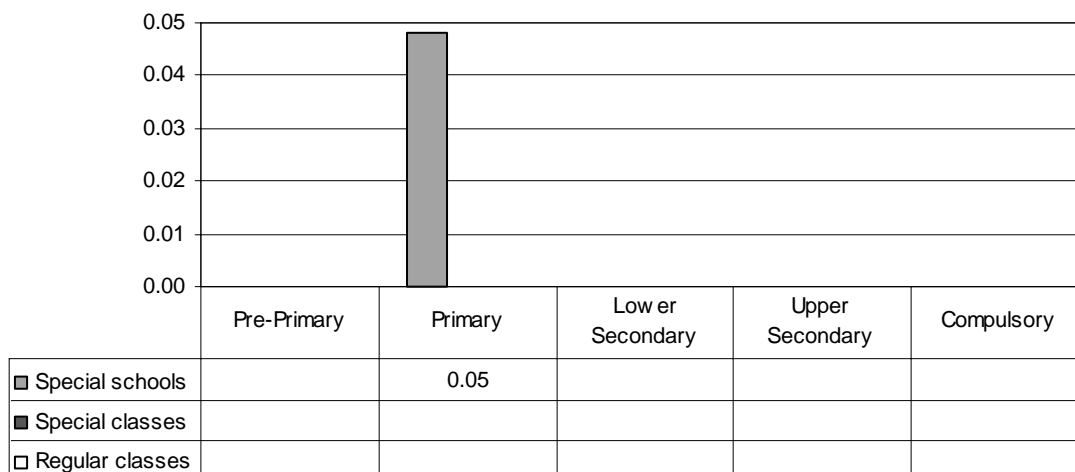
**Total - Category 12. Total percentage of multiple handicapped students falling within the resources definition**



Note: Special schools data in pre-primary education are not applicable.  
Special schools data in lower secondary and upper secondary education are included in primary data.  
Special schools data in compulsory education are missing.  
Special classes data are not applicable.  
Regular classes data in pre-primary education are not applicable.  
Regular classes data in lower secondary, upper secondary and compulsory education are missing.

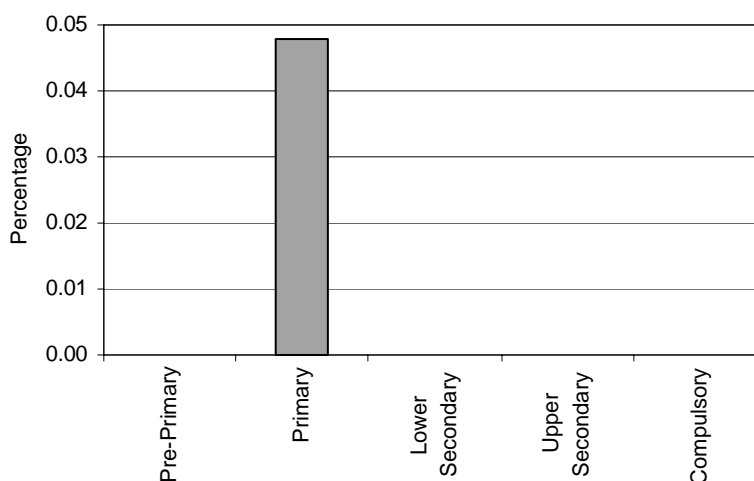
Category 13 Cross-national Category C - Children in the age range of 12-16 years who: a) have been convicted of a crime, b) are on remand by the courts, c) are out of control and are under a care order.

**Proportion of multiple offender students by phases of education in special schools, special classes and regular classes**



Note: Special schools data in pre-primary education are not applicable.  
 Special schools data in lower secondary, upper secondary and compulsory education are included in primary data.  
 Special classes data are not applicable.  
 Regular classes data are not applicable.

**Special Schools - Category 13. Total percentage of multiple offender students falling within the resources definition, by phase of education**

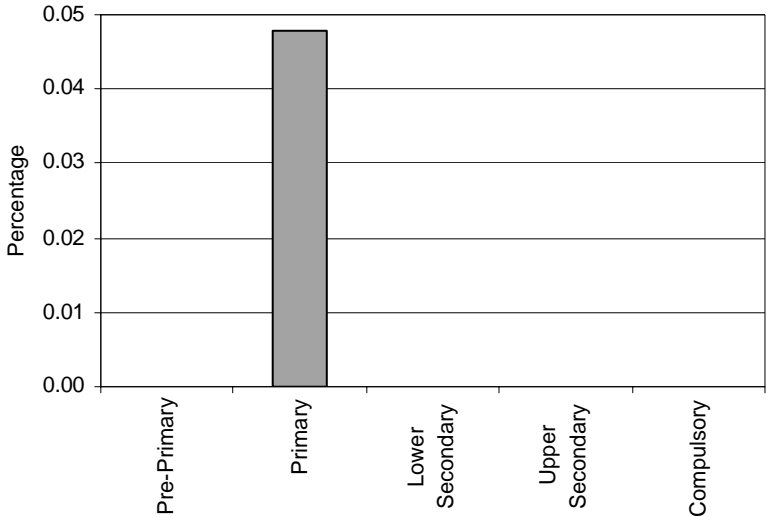


Note: Special schools data in pre-primary education are not applicable.  
 Special schools data in lower secondary, upper secondary and compulsory education are included in primary data.

**Special Classes – Category 13. Young offenders**  
NOT APPLICABLE

**Regular Classes – Category 13. Young offenders**  
NOT APPLICABLE

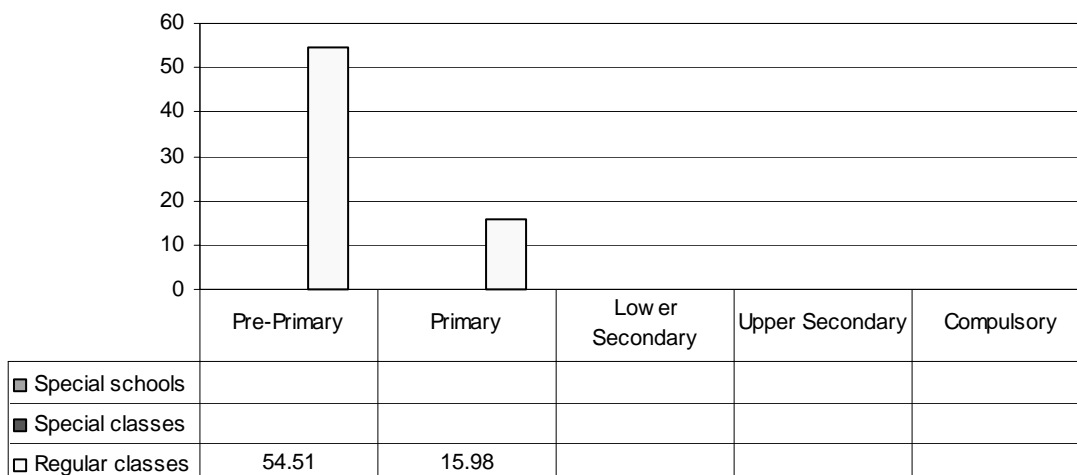
**Total - Category 12. Total percentage of multiple offender students falling within the resources definition**



Note: Special schools data in pre-primary education are not applicable.  
Special schools data in lower secondary, upper secondary and compulsory education are included in primary data.  
Special classes data are not applicable.  
Regular classes data are not applicable.

*Category 14 Cross-national Category C* – Educationally-disadvantaged areas are those where the quality of the educational environment is low in most of the homes, where the level of education attained by the mother is low in most cases and where there are indicators of relative poverty regarding most homes, e.g. living in state housing, having a medical card.

**Proportion of students in schools serving disadvantaged areas by phases of education in special schools, special classes and regular classes**

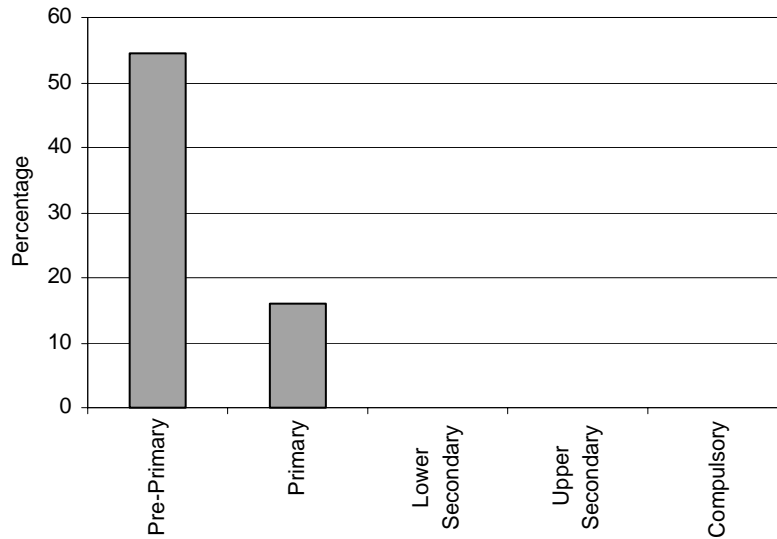


Note: Special schools data are not applicable.  
 Special classes data are not applicable.  
 Regular classes data in lower secondary, upper secondary and compulsory education are missing.

**Special Schools – Category 14. Children in schools serving disadvantaged areas**  
 NOT APPLICABLE

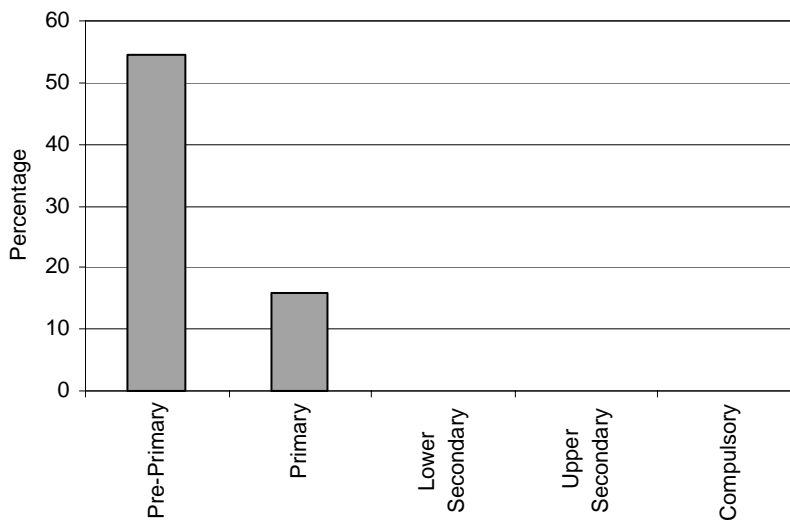
**Special Classes – Category 14. Children in schools serving disadvantaged areas**  
 NOT APPLICABLE

**Regular Classes - Category 14. Total percentage of children in schools serving disadvantaged areas falling within the resources definition, by phase of education**



Note: Regular classes data in lower secondary, upper secondary and compulsory education are missing.

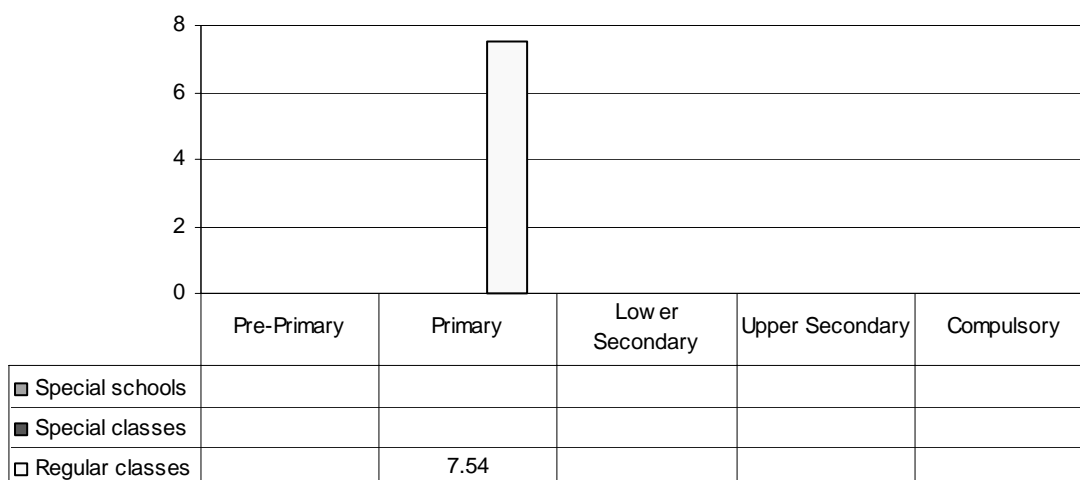
**Total - Category 14. Total percentage of children in schools serving disadvantaged areas falling within the resources definition**



Note: Special schools data are not applicable.  
 Special classes data are not applicable.  
 Regular classes data in lower secondary, upper secondary and compulsory education are missing.

Category 15 Cross-national Category B - Pupils in mainstream schools who have clearly observable difficulties in acquiring basic skills in literacy and/or numeracy or who have some difficulties in learning of a more general nature.

**Proportion of students in need of remedial teaching by phases of education in special schools, special classes and regular classes**

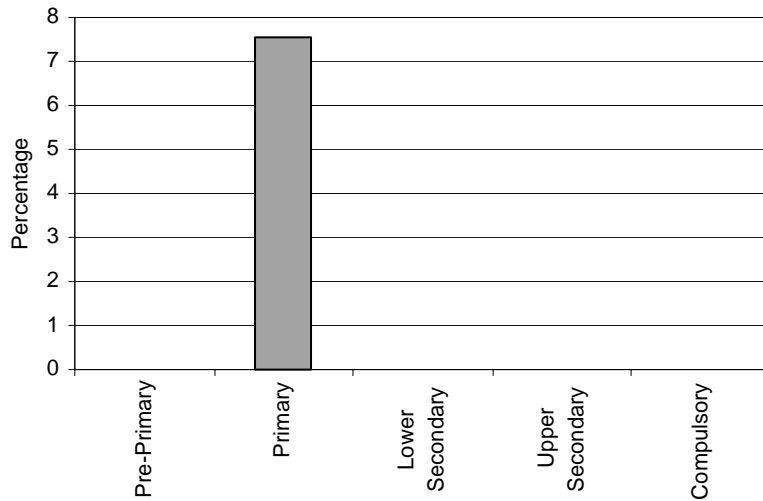


Note: Special schools data are not applicable.  
 Special classes data are not applicable.  
 Regular classes data in pre-primary education are not applicable.  
 Regular classes data in lower secondary, upper secondary and compulsory education are missing.

**Special Schools – Category 15. Pupils in need of remedial teaching**  
 NOT APPLICABLE

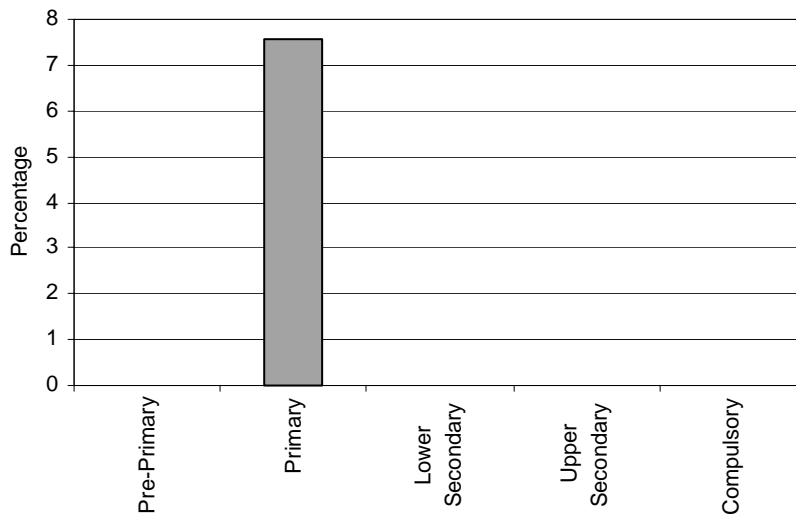
**Special Classes – Category 15. Pupils in need of remedial teaching**  
 NOT APPLICABLE

**Regular Classes - Category 15. Total percentage of pupils in need of remedial teaching falling within the resources definition, by phase of education**



Note: Regular classes data in pre-primary education are not applicable.  
Regular classes data in lower secondary, upper secondary and compulsory education are missing.

**Total - Category 15. Total percentage of pupils in need of remedial teaching falling within the resources definition**



Note: Special schools data are not applicable.  
Special classes data are not applicable.  
Regular classes data in pre-primary education are not applicable.  
Regular classes data in lower secondary, upper secondary and compulsory education are missing.

*Category 16 Cross-national Category C - Children of parents who have been granted political asylum in Ireland.*

**Special Schools – Category 16. Children of refugees**  
  
NOT APPLICABLE

**Special Classes – Category 16. Children of refugees**

NOT APPLICABLE

**Regular Classes – Category 16. Children of refugees**

MISSING