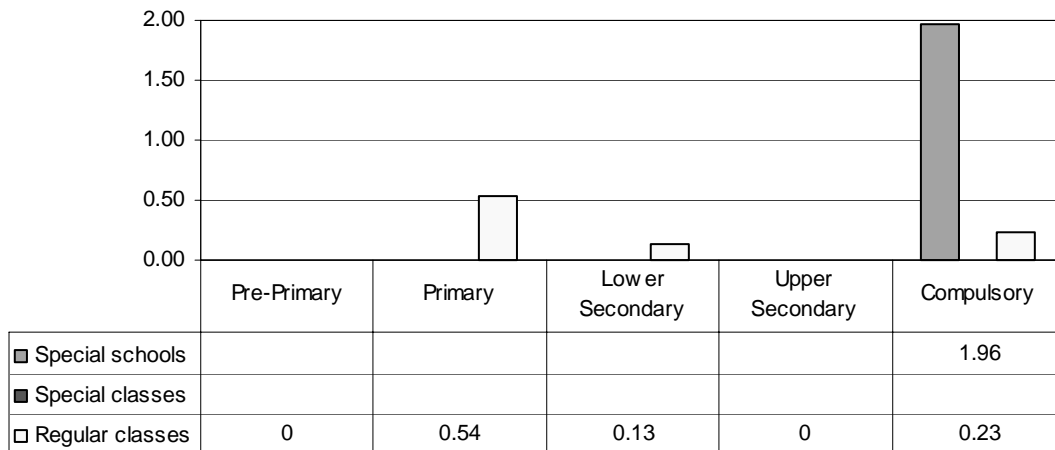


**GERMANY**

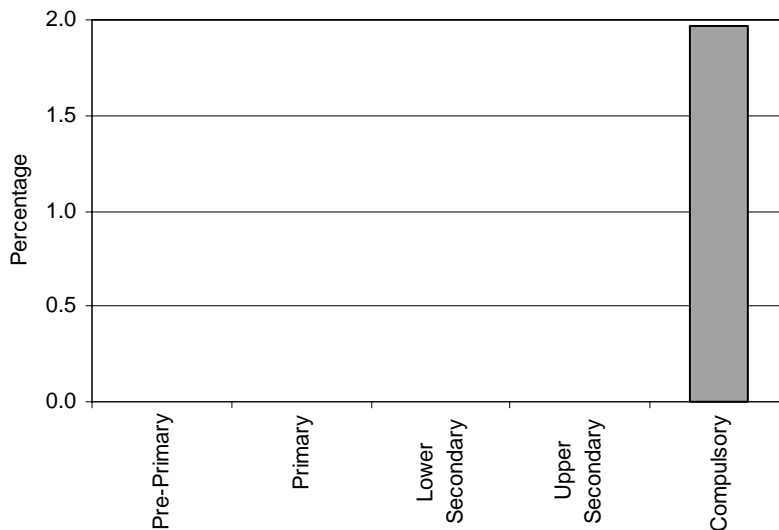
*Category 1 Cross-national Category B* - Children or youth needing promotion through special education due to a severe, extensive and long-lasting deficiency in learning development, in thinking, remembering, using language, perception, movement, emotion and interaction. The relation between self and environment is difficult. Aims and contents of the mainstream curricula cannot be fulfilled.

**Proportion of students with learning disabilities by phases of education in special schools, special classes and regular classes**



Note: Special schools data in pre-primary, primary, lower secondary and upper secondary education are missing. Special classes data are included in special schools data.

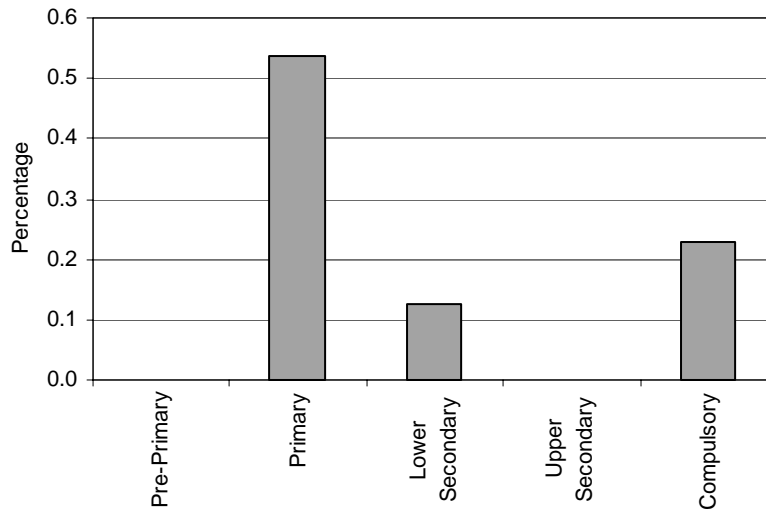
**Special Schools – Category 1. Total percentage of students with learning disabilities falling within the resources definition, by phase of education**



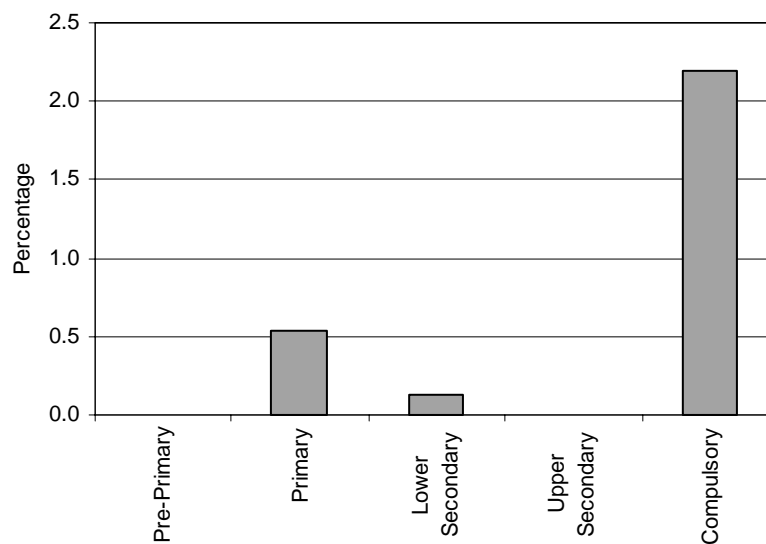
Note: Special schools data in pre-primary, primary, lower secondary and upper secondary education are missing.

**Special Classes – Category 1. Learning disabilities**  
 INCLUDED IN SPECIAL SCHOOLS CATEGORIES  
 1-10

**Regular Classes – Category 1. Total percentage of students with learning disabilities falling within the resources definition, by phase of education**



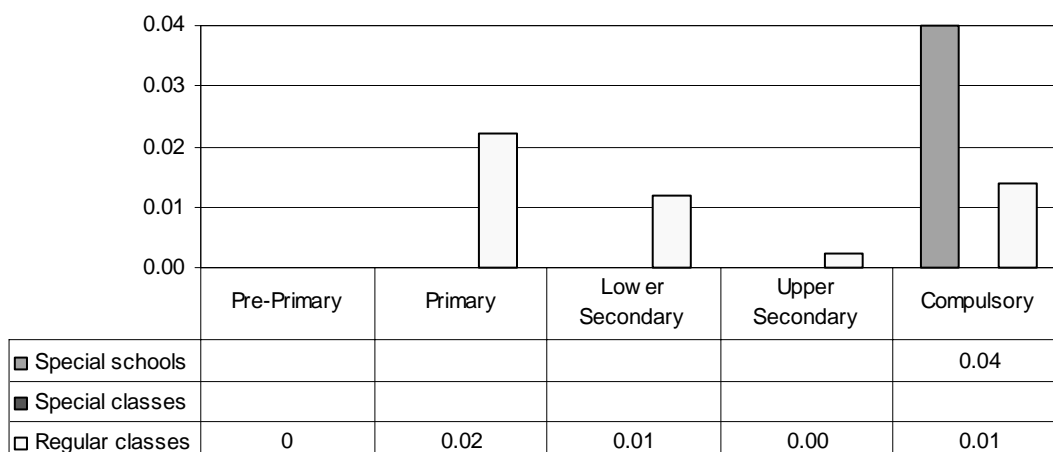
**Total – Category 1. Total percentage of students with learning disabilities falling within the resources definition**



Note: Special schools data in pre-primary, primary, lower secondary and upper secondary education are missing. Special classes data are included in special schools data.

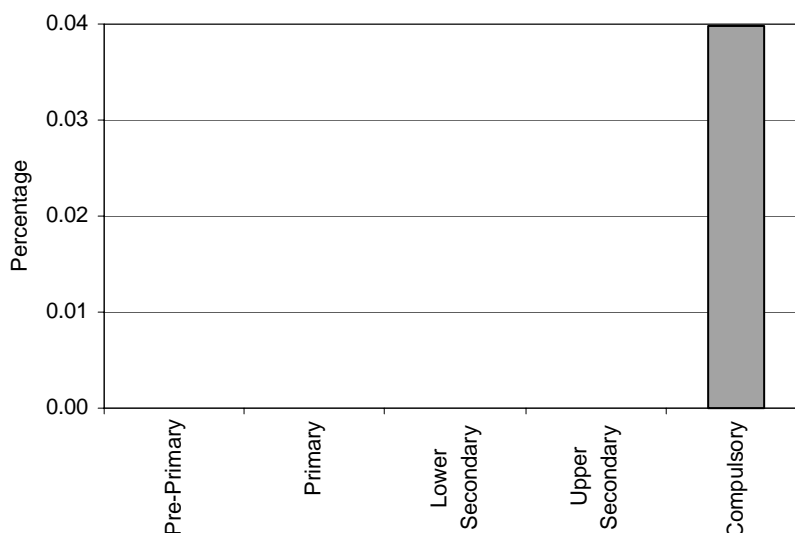
*Category 2 Cross-national Category A - Students:* having a central visual acuity in the better eye or in both eyes of 0.3 or less for the distance despite a correction by glasses but without other aids; or having a visual acuity of 0.3 (Nieden V) or less for the proximity regarding a working distance of at least 30 centimetres; or whose faculty of vision is impaired to a similar degree despite better visual acuity; or blind children or youths without visual faculty or whose visual faculty is largely impaired resulting in an inability to act like seeing persons (even after an optical correction, *e.g.*, glasses).

**Proportion of students who are partially sighted or blind by phases of education in special schools, special classes and regular classes**



Note: Special schools data in pre-primary, primary, lower secondary and upper secondary education are missing. Special classes data are included in special schools data.

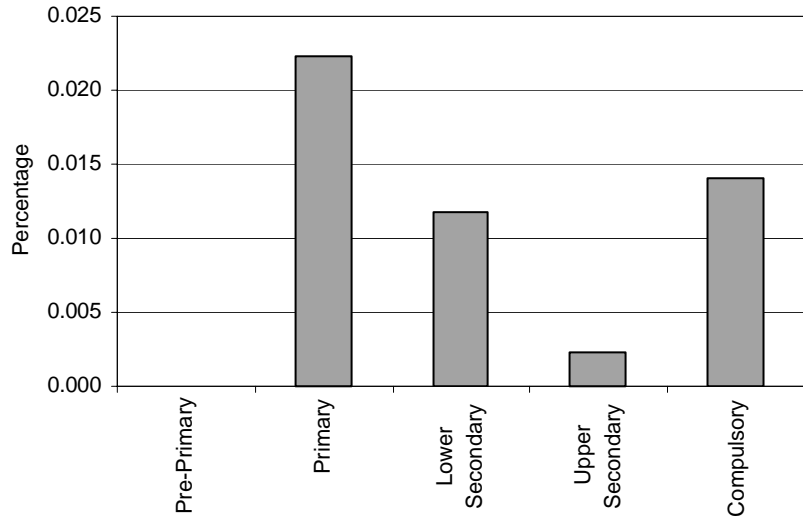
**Special Schools – Category 2. Total percentage of students who are partially sighted or blind falling within the resources definition, by phase of education**



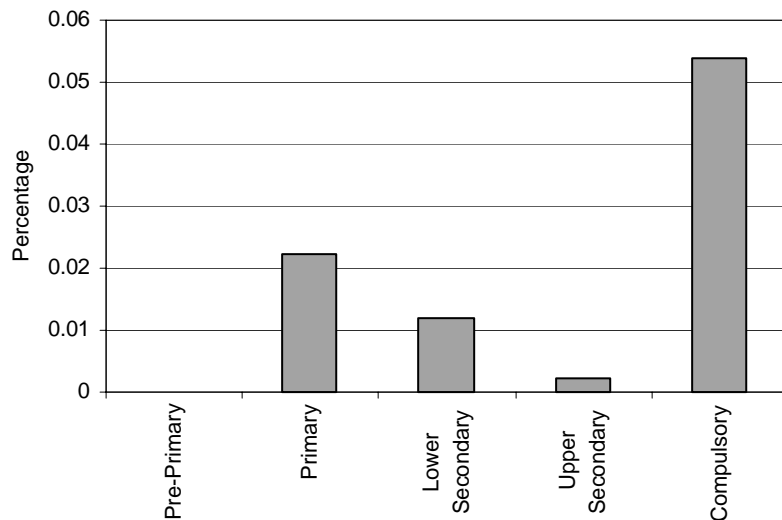
Note: Special schools data in pre-primary, primary, lower secondary and upper secondary education are missing.

**Special Classes – Category 2. Partially sighted or blind**  
 INCLUDED IN SPECIAL SCHOOLS CATEGORIES  
 1-10

**Regular Classes – Category 2. Total percentage of students who are partially sighted or blind falling within the resources definition, by phase of education**



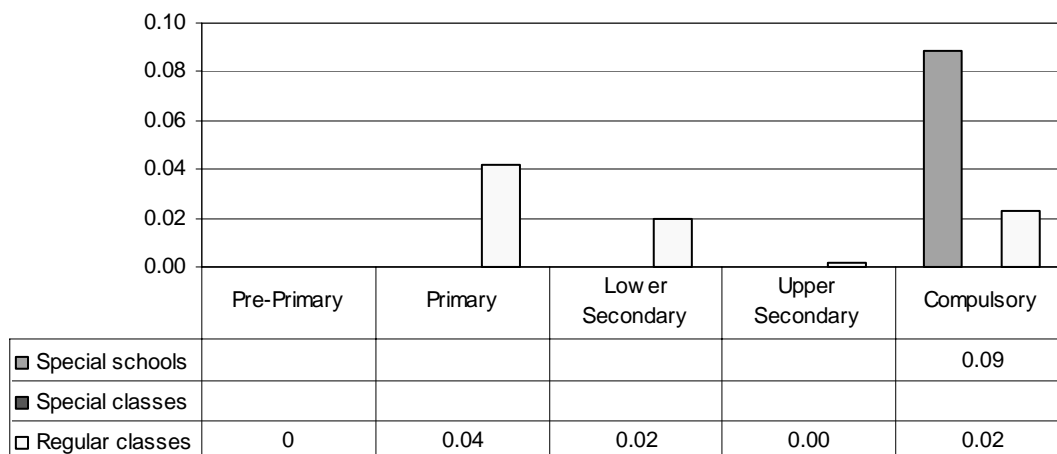
**Total – Category 2. Total percentage of students who are partially sighted or blind falling within the resources definition**



Note: Special schools data in pre-primary, primary, lower secondary and upper secondary education are missing. Special classes data are included in special schools data.

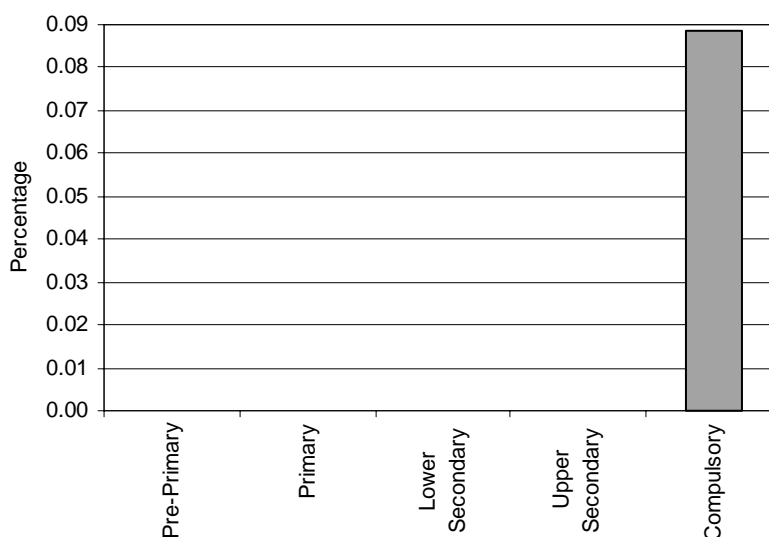
*Category 3 Cross-national Category A* - Children or youth who suffer a loss of hearing of more than 90 db in the frequency range above 500 cps or whose ability to hear is affected in such way that even with hearing aids they need special education; or deaf students who, irrespective of their actual deficiency in hearing capacity, are not capable of noticing acoustic signals of their environment and making use of them for acquiring speech, speech hearing and an active or passive phonetic speech competence.

**Proportion of students who are partially hearing or deaf by phases of education in special schools, special classes and regular classes**



Note: Special schools data in pre-primary, primary, lower secondary and upper secondary education are missing. Special classes data are included in special schools data.

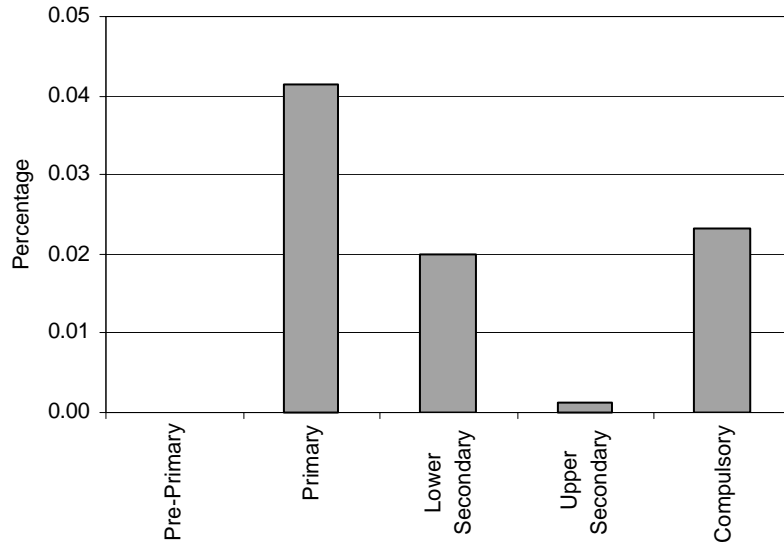
**Special Schools – Category 3. Total percentage of students who are partially hearing or deaf falling within the resources definition, by phase of education**



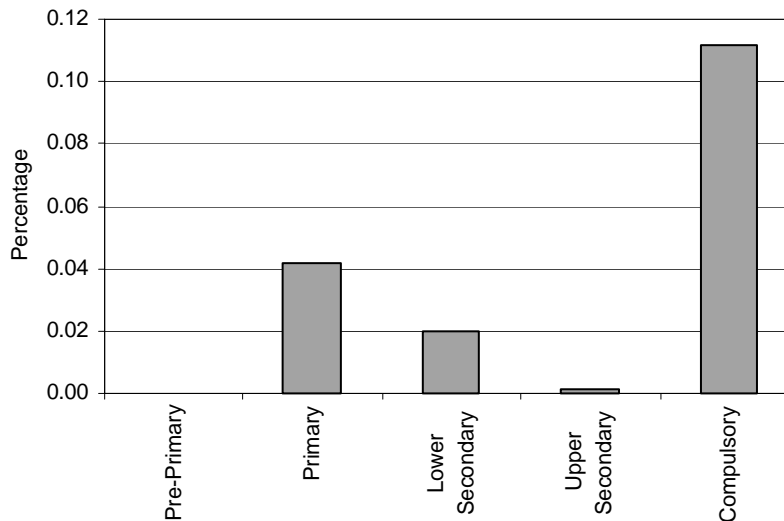
Note: Special schools data in pre-primary, primary, lower secondary and upper secondary education are missing.

**Special Classes – Category 3. Partially hearing or deaf**  
 INCLUDED IN SPECIAL SCHOOLS CATEGORIES  
 1-10

**Regular Classes – Category 3. Total percentage of students who are partially hearing or deaf falling within the resources definition, by phase of education**



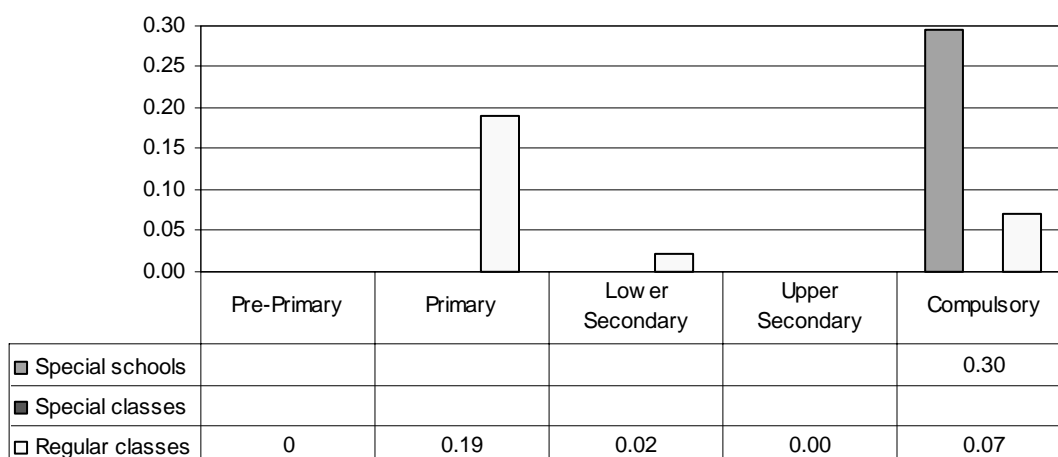
**Total – Category 3. Total percentage of students who are partially hearing or deaf falling within the resources definition**



Note: Special schools data in pre-primary, primary, lower secondary and upper secondary education are missing. Special classes data are included in special schools data.

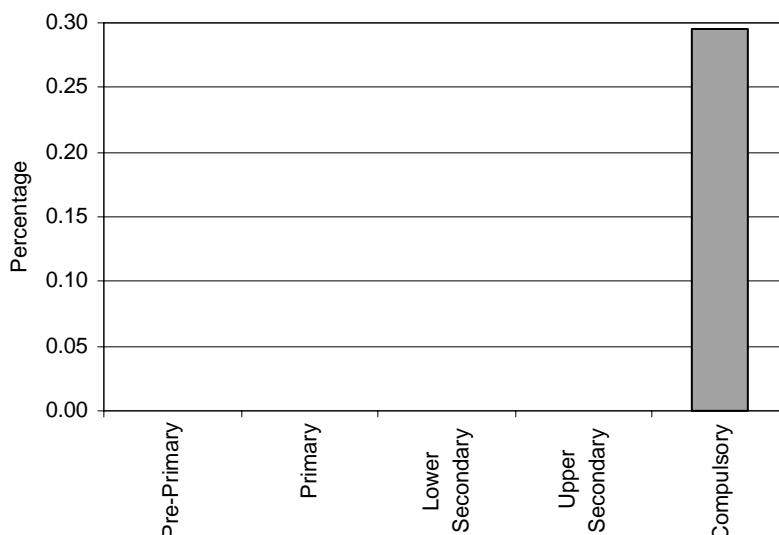
*Category 4 Cross-national Category A* - Children or youth whose speech and development of speaking is largely impaired because of 1) marked underdevelopment of speech with symptoms of multiple or universal stammering and/or dysfunctional grammar; 2) disorders in trained speech required at an early stage (aphasia, dysphasia); 3) central handicaps in speech development (audimutisimus, acute agnosia); 4) morbid changes in the speech organs so that entry into or staying in a regular school with ambulant school-accompanying promotion programmes is regarded as insufficient.

**Proportion of students with speech impairments by phases of education in special schools, special classes and regular classes**



Note: Special schools data in pre-primary, primary, lower secondary and upper secondary education are missing. Special classes data are included in special schools data.

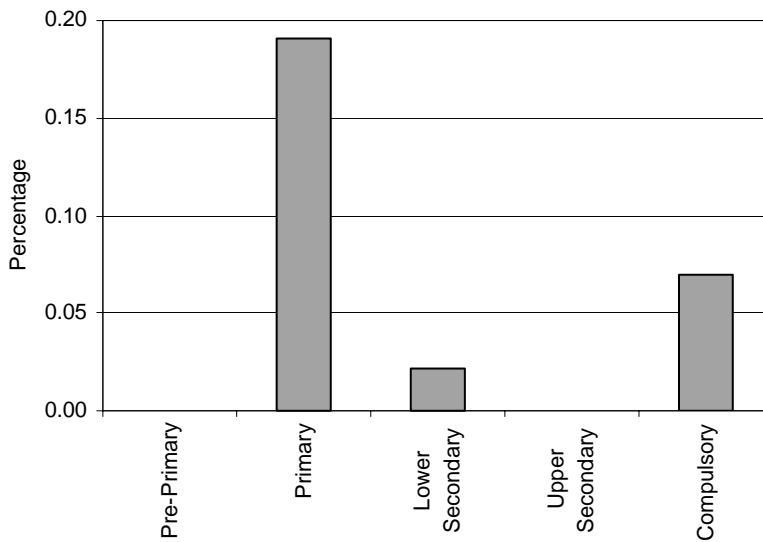
**Special Schools – Category 4. Total percentage of students with speech impairments falling within the resources definition, by phase of education**



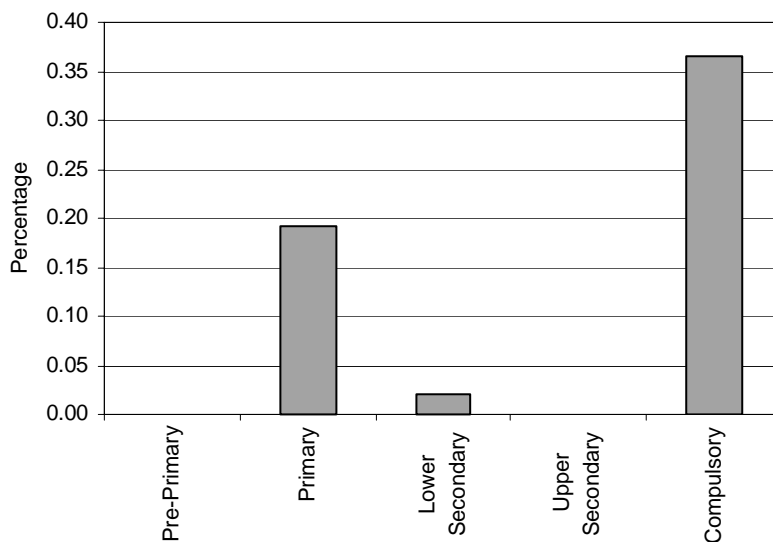
Note: Special schools data in pre-primary, primary, lower secondary and upper secondary education are missing.

**Special Classes – Category 4. Speech impairments**  
 INCLUDED IN SPECIAL SCHOOLS CATEGORIES  
 1-10

**Regular schools – Category 4. Total percentage of students with speech impairments falling within the resources definition, by phase of education**



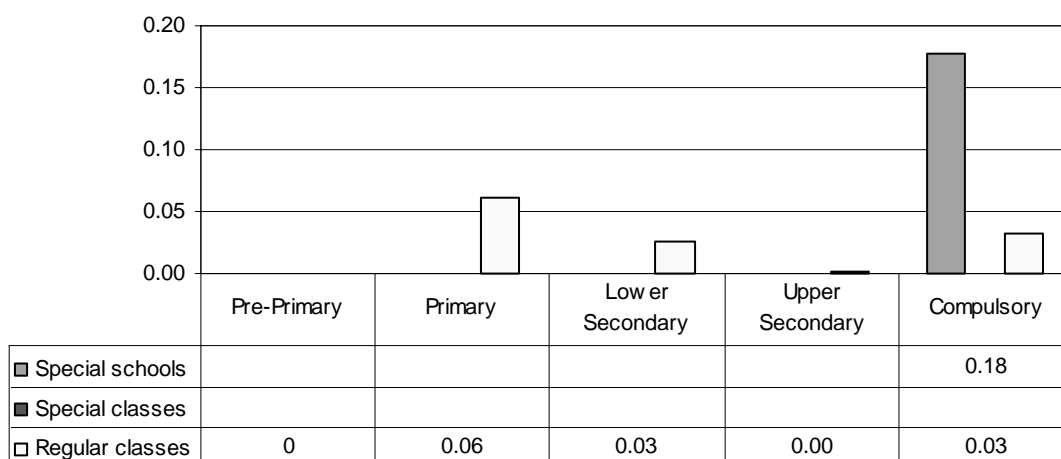
**Total – Category 4. Total percentage of students with speech impairments falling within the resources definition**



Note: Special schools data in pre-primary, primary, lower secondary and upper secondary education are missing. Special classes data are included in special schools data.

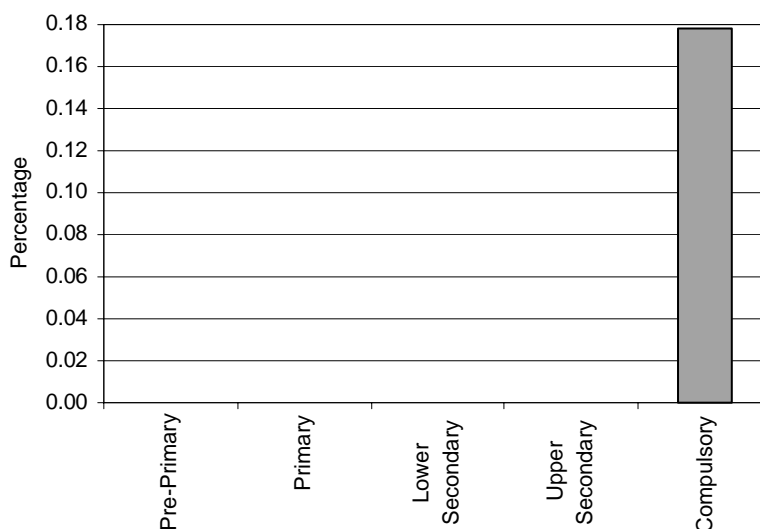
Category 5 Cross-national Category A - Children or youth with cerebral motor disturbances, myopathia, malformations, paraplegia and other resulting in disorders, retardations, deficits in locomotion and other disabilities which imply the need for special education and further measures and facilities.

**Proportion of students who are physically handicapped by phases of education in special schools, special classes and regular classes**



Note: Special schools data in pre-primary, primary, lower secondary and upper secondary education are missing. Special classes data are included in special schools data.

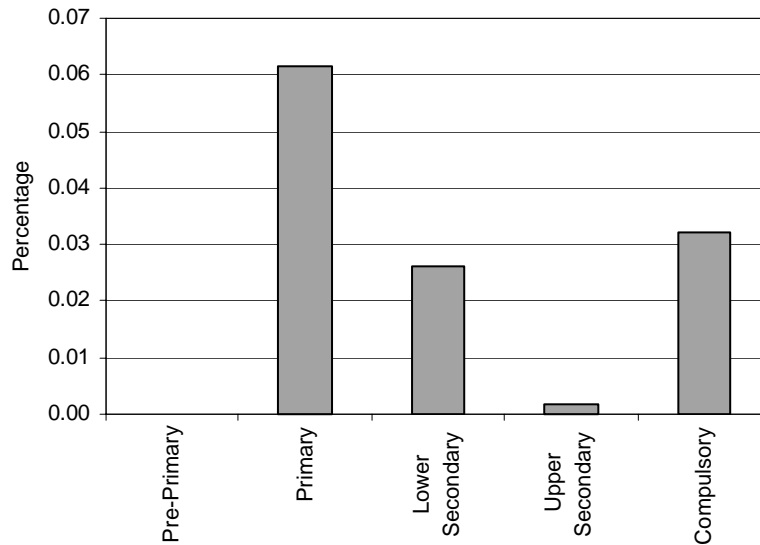
**Special Schools – Category 5. Total percentage of students who are physically handicapped falling within the resources definition, by phase of education**



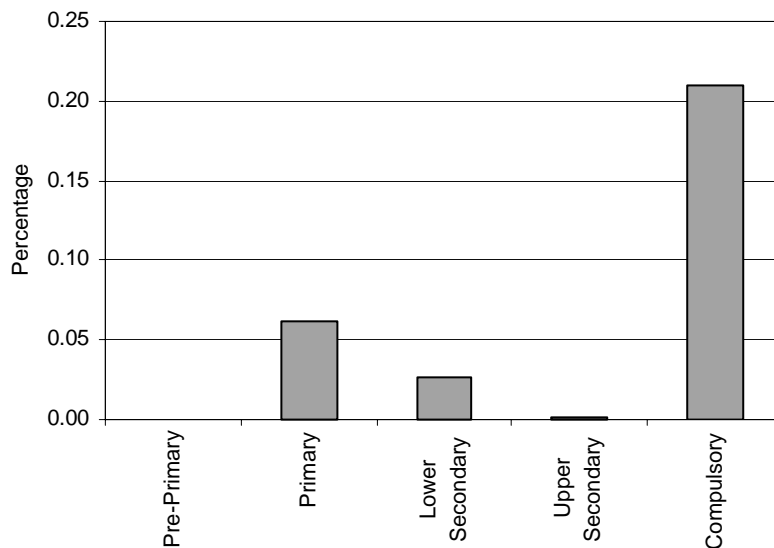
Note: Special schools data in pre-primary, primary, lower secondary and upper secondary education are missing.

**Special Classes – Category 5. Physically handicapped**  
 INCLUDED IN SPECIAL SCHOOLS CATEGORIES  
 1-10

**Regular Classes – Category 5. Total percentage of students who are physically handicapped falling within the resources definition, by phase of education**



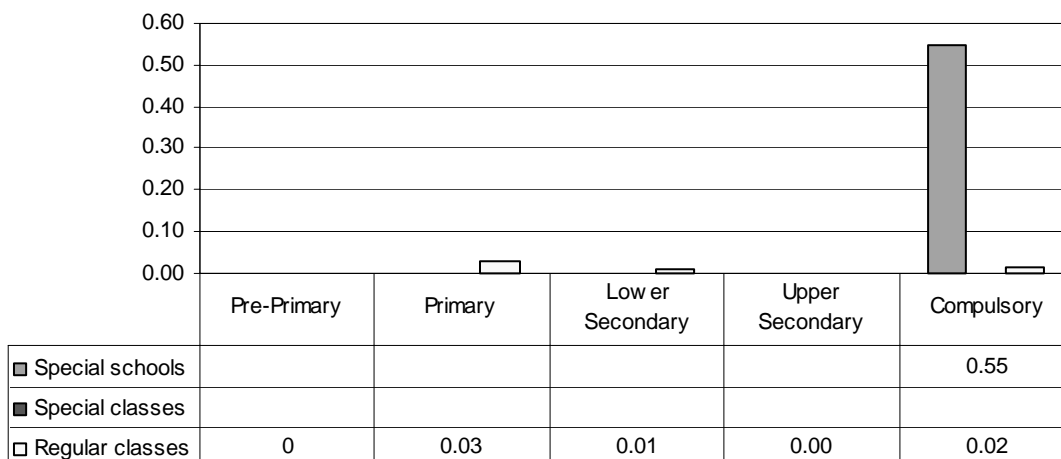
**Total – Category 5. Total percentage of students who are physically handicapped falling within the resources definition**



Note: Special schools data in pre-primary, primary, lower secondary and upper secondary education are missing. Special classes data are included in special schools data.

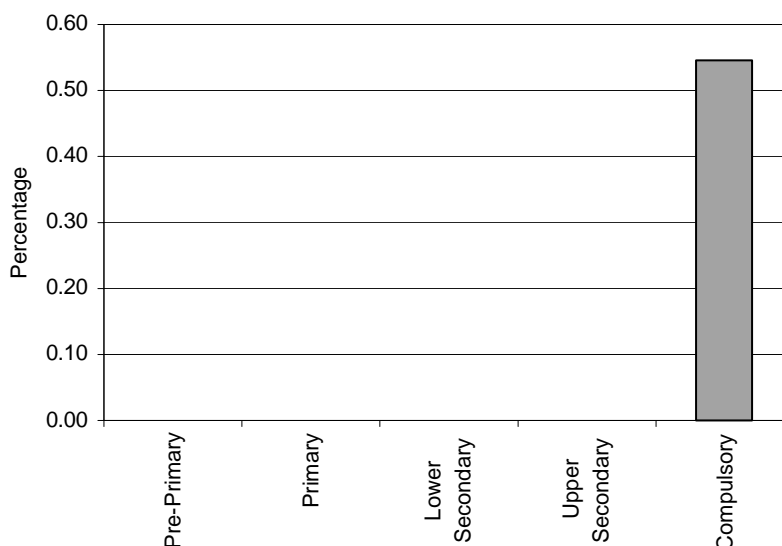
*Category 6 Cross-national Category A* - Children or youth who are severely mentally disabled as a result of damage to the central nervous system before or after birth and who have conspicuous peculiarities in their cognitive and emotional absorption and storage processes, expressive behaviour, motor abilities and their verbal and non-verbal communication.

**Proportion of students who are mentally handicapped by phases of education in special schools, special classes and regular classes**



Note: Special schools data in pre-primary, primary, lower secondary and upper secondary education are missing. Special classes data are included in special schools data.

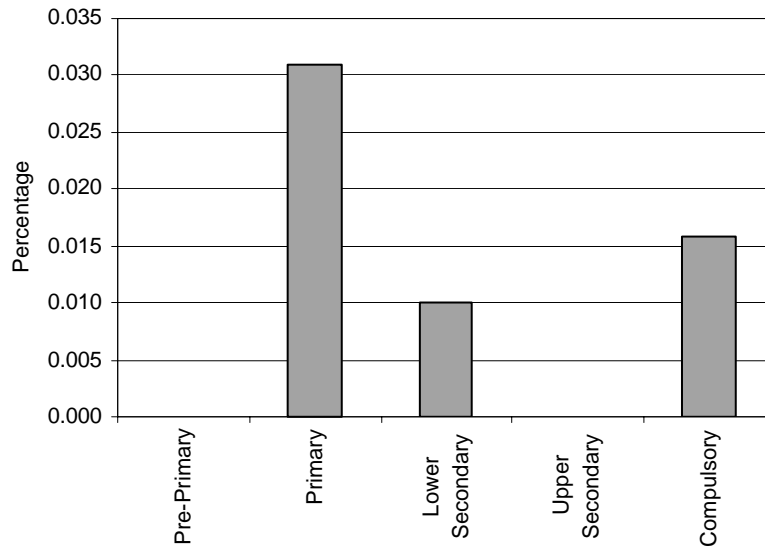
**Special Schools – Category 6. Total percentage of students who are mentally handicapped falling within the resources definition, by phase of education**



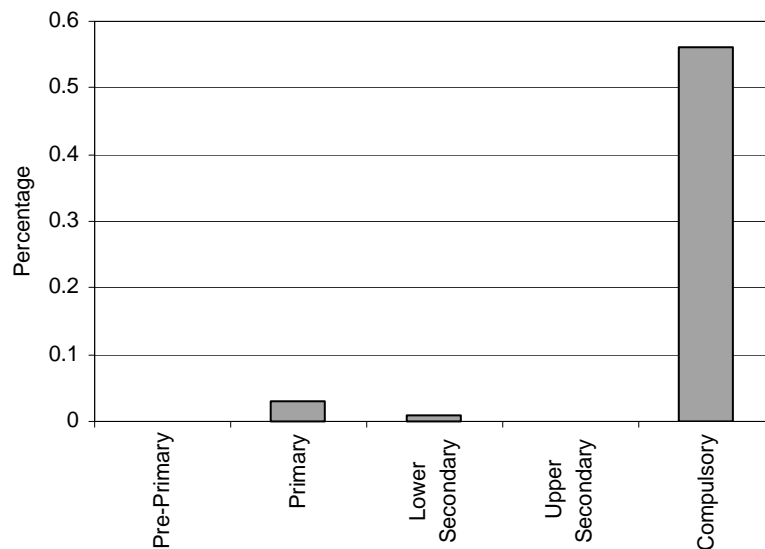
Note: Special schools data in pre-primary, primary, lower secondary and upper secondary education are missing.

**Special Classes – Category 6. Mentally  
handicapped**  
INCLUDED IN SPECIAL SCHOOLS CATEGORIES  
1-10

**Regular Classes – Category 6. Total percentage of students who are mentally  
handicapped falling within the resources definition, by phase of education**



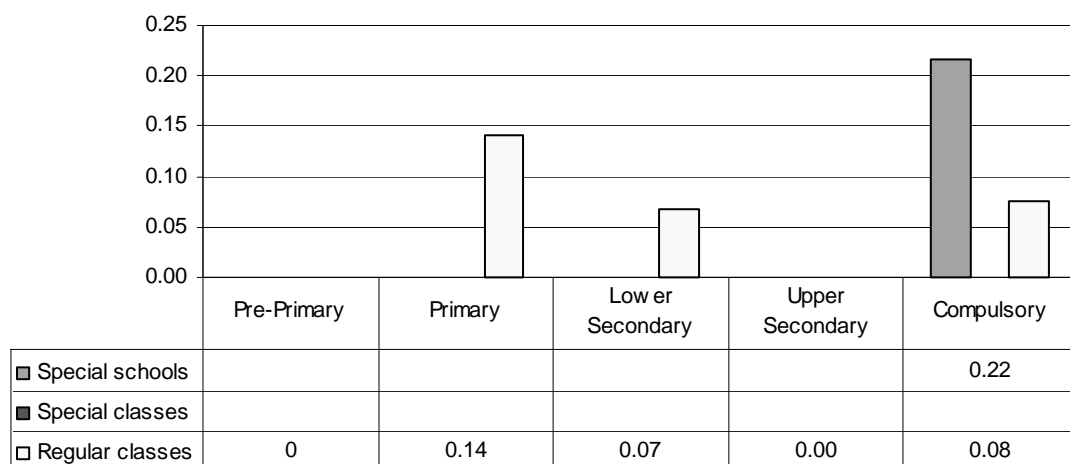
**Total – Category 6. Total percentage of students who are mentally handicapped falling  
within the resources definition**



Note: Special schools data in pre-primary, primary, lower secondary and upper secondary education are missing. Special classes data are included in special schools data.

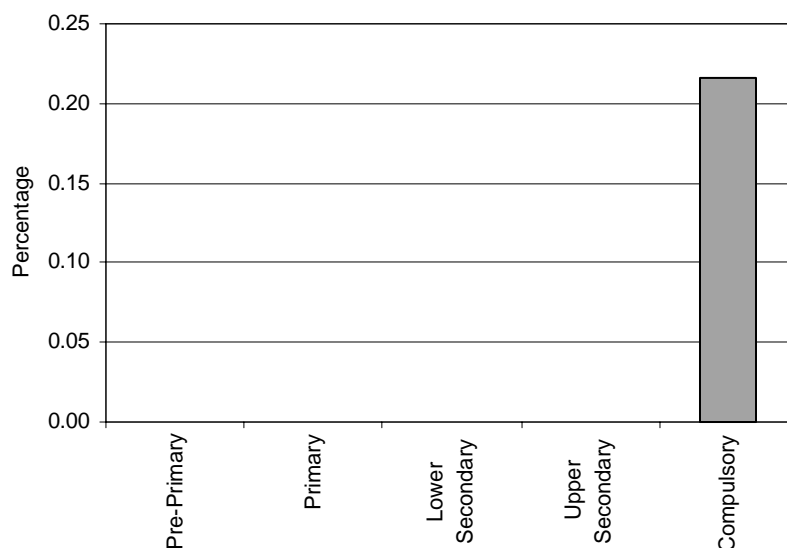
Category 7 Cross-national Category B - Children or youth with behavioural and conduct disorders and/or emotional disorders; therefore they need special education to develop the abilities of appropriate experiences and social competences.

**Proportion of students with behavioural disorders by phases of education in special schools, special classes and regular classes**



Note: Special schools data in pre-primary, primary, lower secondary and upper secondary education are missing. Special classes data are included in special schools data.

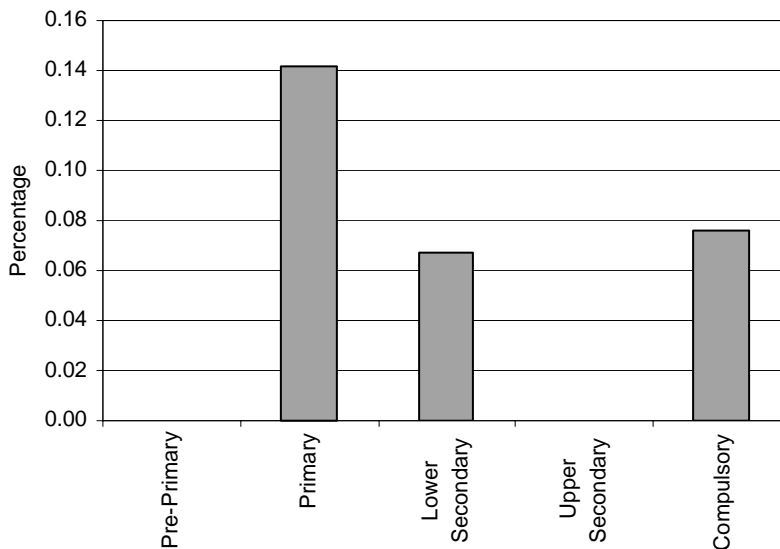
**Special Schools – Category 7. Total percentage of students with behavioural disorders falling within the resources definition, by phase of education**



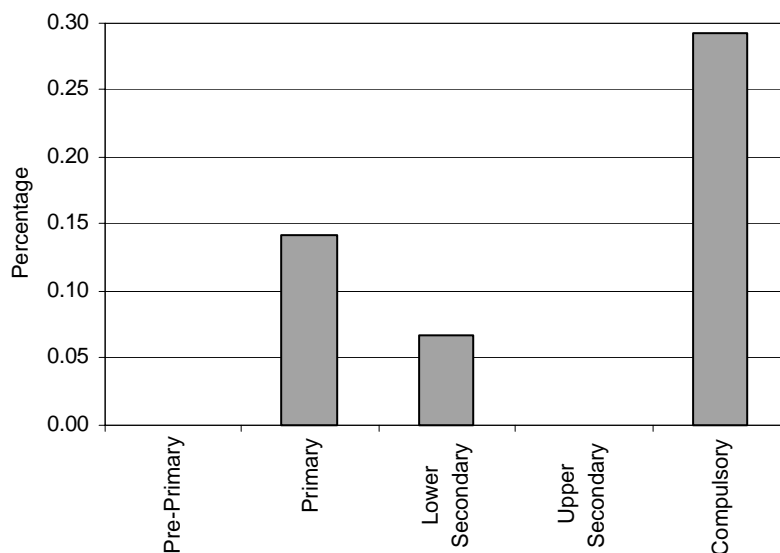
Note: Special schools data in pre-primary, primary, lower secondary and upper secondary education are missing.

**Special Classes – Category 7. Behavioural disorders**  
 INCLUDED IN SPECIAL SCHOOLS CATEGORIES  
 1-10

**Regular Classes – Category 7. Total percentage of students with behavioural disorders falling within the resources definition, by phase of education**



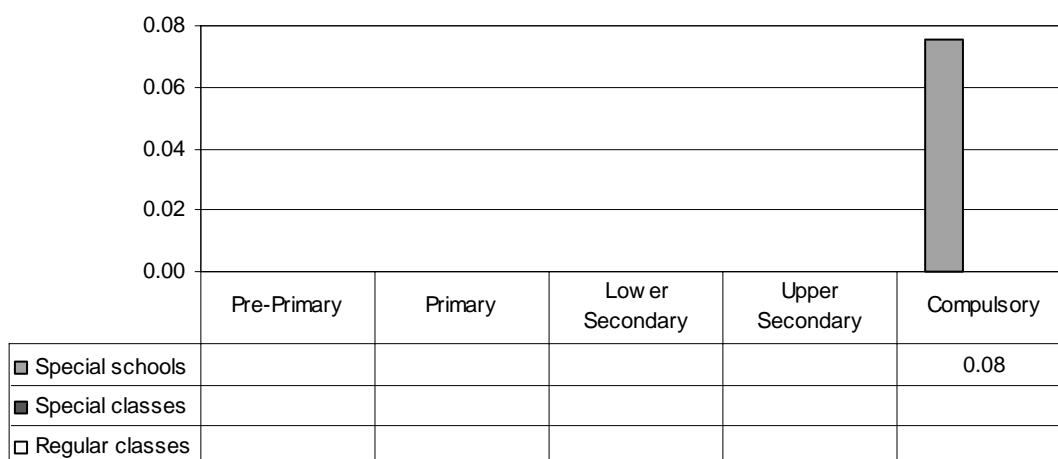
**Total – Category 7. Total percentage of students with behavioural disorders falling within the resources definition**



Note: Special schools data in pre-primary, primary, lower secondary and upper secondary education are missing. Special classes data are included in special schools data.

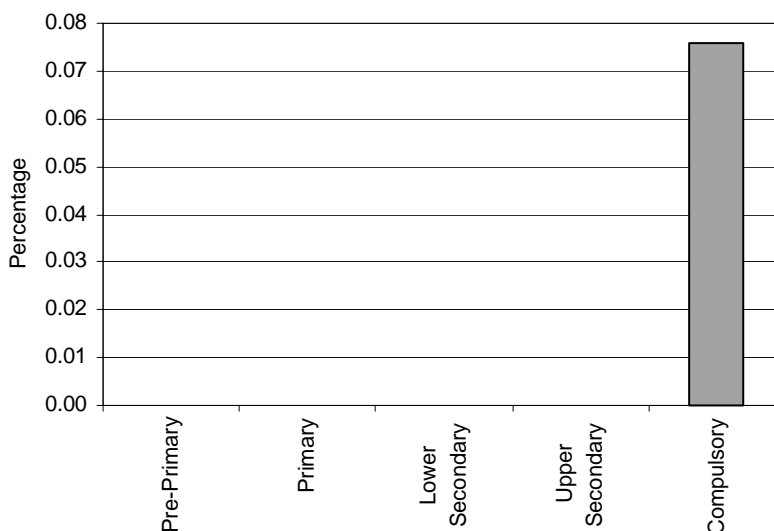
Category 8 Cross-national Category A - Children who are being treated in clinics, hospitals or sanatoriums for a longer period of time and who are capable of taking part in lessons; as well as students with chronic illnesses who cannot therefore take part in regular instructions.

**Proportion of sick students by phases of education in special schools, special classes and regular classes**



Note: Special schools data in pre-primary, primary, lower secondary and upper secondary education are missing. Special classes data are included in special schools data. Regular classes data are not applicable.

**Special Schools – Category 8 Total percentage of sick students falling within the resources definition, by phase of education**

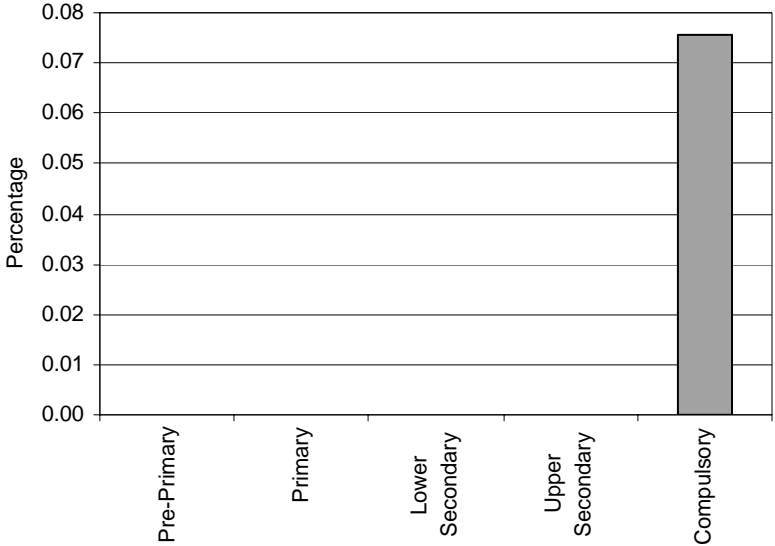


Note: Special schools data in pre-primary, primary, lower secondary and upper secondary education are missing.

**Special Classes – Category 8. Sick**  
INCLUDED IN SPECIAL SCHOOLS CATEGORIES  
1-10

**Regular Classes – Category 8. Sick**  
NOT APPLICABLE

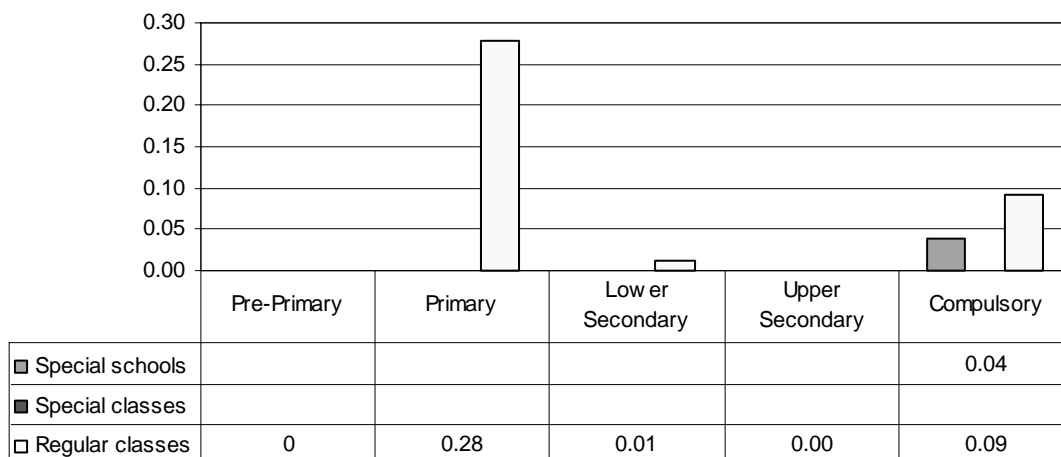
**Total – Category 8. Total percentage of sick students falling within the resources definition**



Note: Special schools data in pre-primary, primary, lower secondary and upper secondary education are missing. Special classes data are included in special schools data. Regular classes data are not applicable.

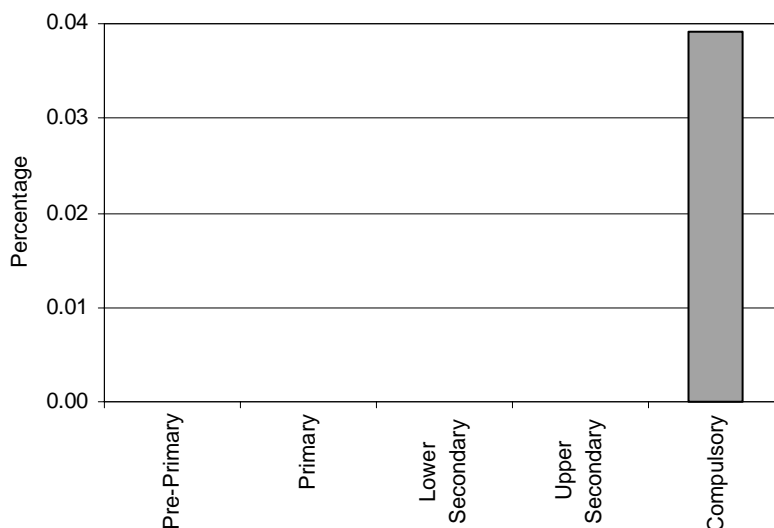
Category 9 Cross-national Category A - Children and youth with more than one handicap to be considered in the development of learning.

**Proportion of students with multiple handicaps by phases of education in special schools, special classes and regular classes**



Note: Special schools data in pre-primary, primary, lower secondary and upper secondary education are missing. Special classes data are included in special schools data.

**Special Schools – Category 9. Total percentage of students with multiple handicaps falling within the resources definition, by phase of education**

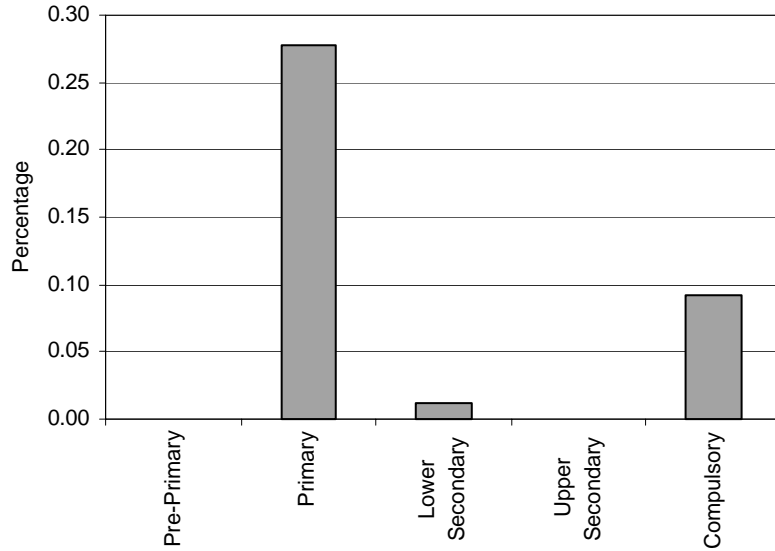


Note: Special schools data in pre-primary, primary, lower secondary and upper secondary education are missing.

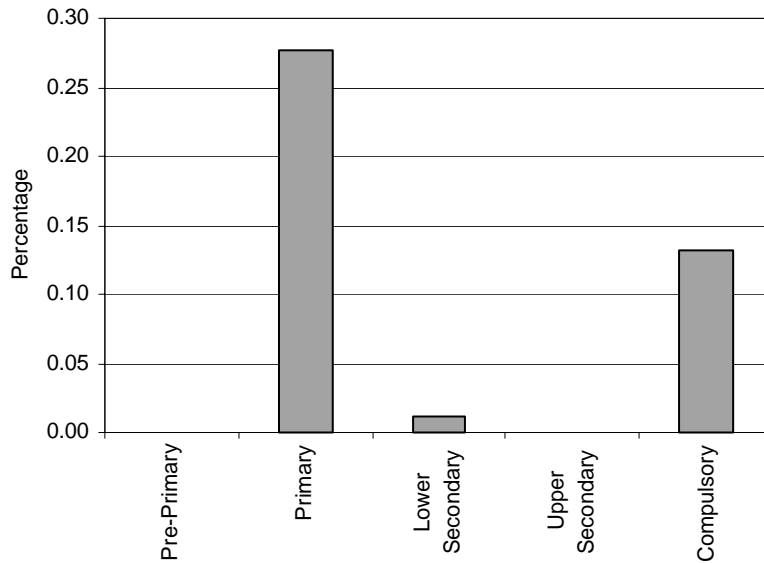
**Special Classes – Category 9. Multiple handicaps**

INCLUDED IN SPECIAL SCHOOLS CATEGORIES 1-10

**Regular Classes – Category 9. Total percentage of students with multiple handicaps falling within the resources definition, by phase of education**



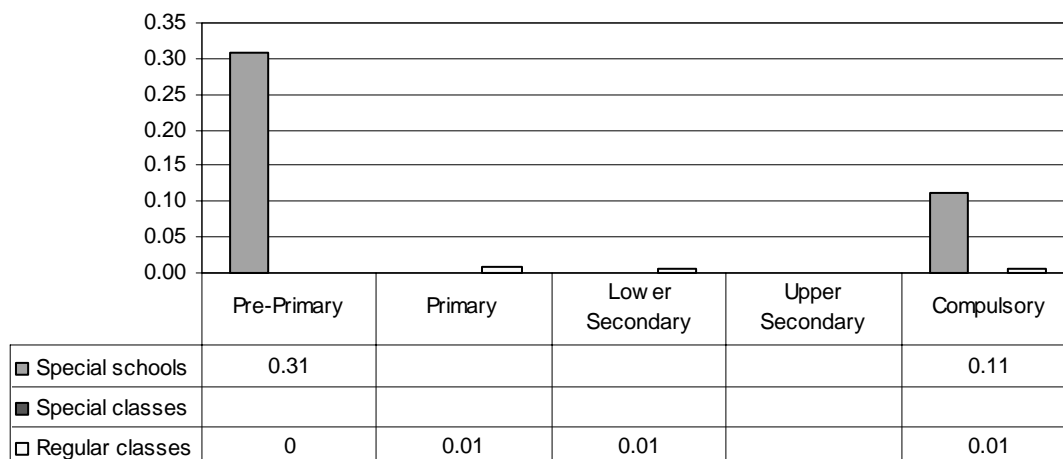
**Total – Category 9. Total percentage of students with multiple handicaps falling within the resources definition**



Note: Special schools data in pre-primary, primary, lower secondary and upper secondary education are missing. Special classes data are included in special schools data.

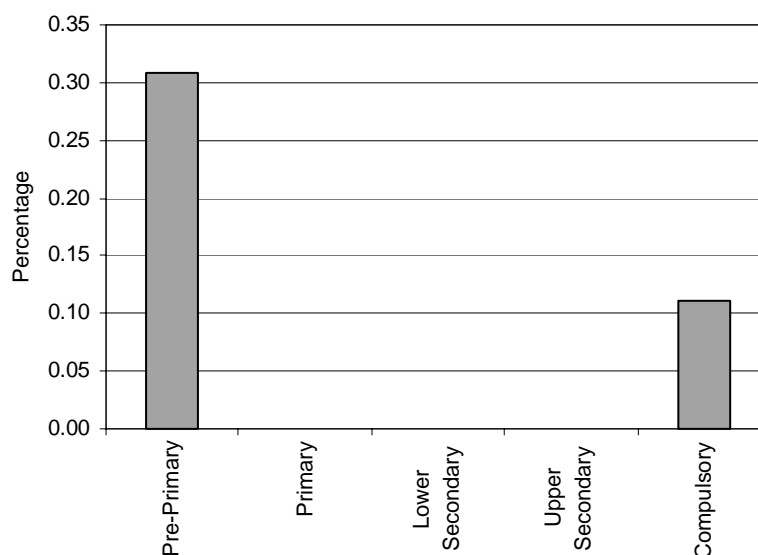
Category 10 Cross-national Category B - Not available

**Proportion of students unknown, no information by phases of education in special schools, special classes and regular classes**



Note: Special schools data in primary, lower secondary and upper secondary education are missing.  
 Special classes data are included in special schools data.  
 Regular classes data in upper secondary education are missing.

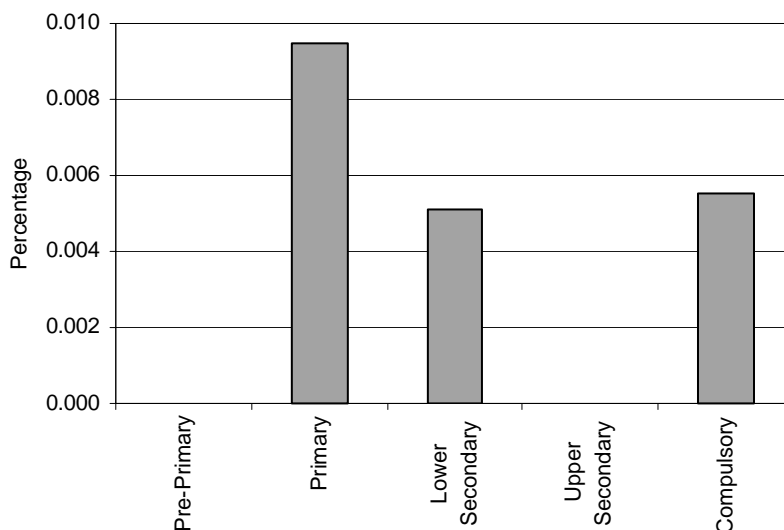
**Special Schools – Category 10. Total percentage of students unknown, no information, falling within the resources definition, by phase of education**



Note: Special schools data in primary, lower secondary and upper secondary education are missing.

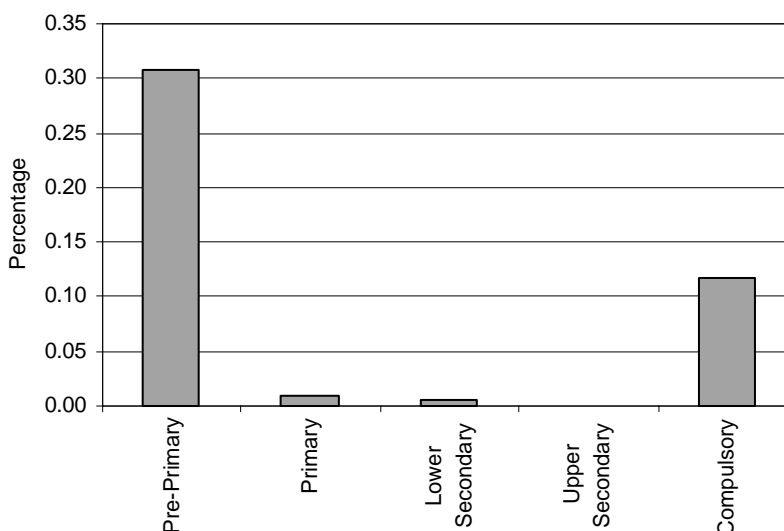
**Special Classes – Category 10. Unknown, no information**  
 INCLUDED IN SPECIAL SCHOOLS CATEGORIES  
 1-10

**Regular Classes – Category 10. Total percentage of students unknown, no information, falling within the resources definition, by phase of education**



Note: Regular classes data in upper secondary education are missing.

**Total – Category 10. Total percentage of students unknown, no information, falling within the resources definition**



Note: Special schools data in primary, lower secondary and upper secondary education are missing.  
Special classes data are included in special schools data.  
Regular classes data in upper secondary education are missing.

*Category 11 Cross-national Category A - Children and youth with a severe developmental disability in verbal and non-verbal communication and social interaction with resistance to environmental changes and mostly engaged in repetitive activities and stereotyped movements based on complex impairment of the central nervous system. No statistical data of the large groups available, but programmes are provided.*

*Category 12 Cross-national Category B* - Students in need of support because of particular and limited difficulties in basic skills concerning reading, writing or numeracy. No statistical data of the large groups available, but programmes are provided.

*Category 13 Cross-national Category C* - Children and youth in need of support because their parents are itinerant workers (circus, fairs, barges). No statistical data of the large groups available, but programmes are provided.

*Category 14 Cross-national Category C* - Children and youth in need of support because they don't have appropriate competence in German, so that they cannot follow instructions with adequate effect and success. No statistical data of the large groups available, but programmes are provided.