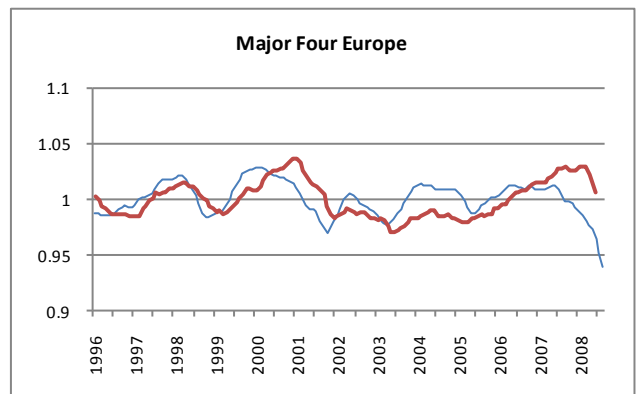
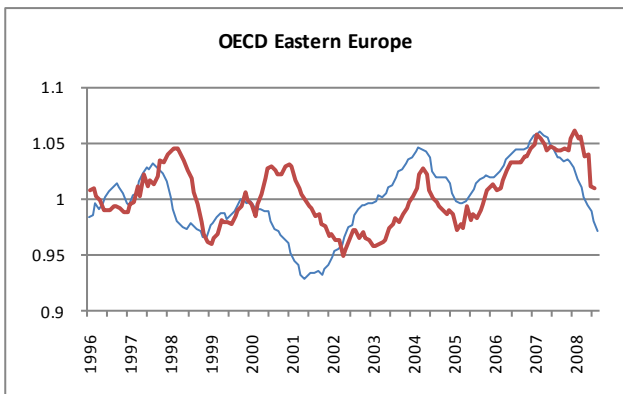
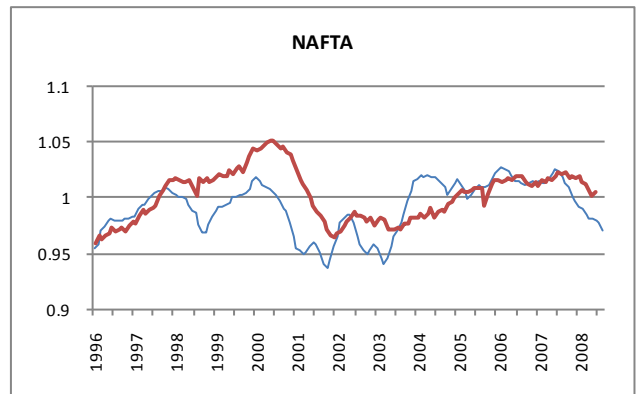
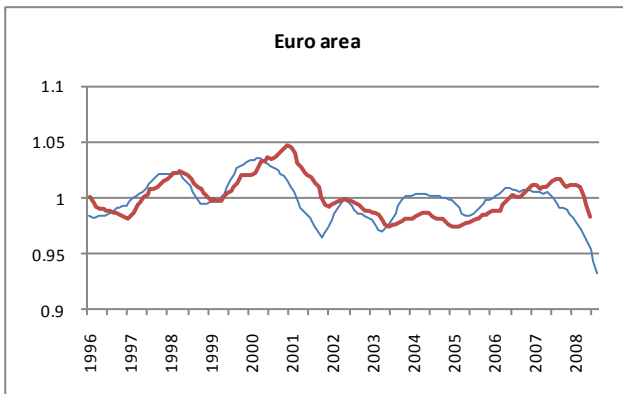
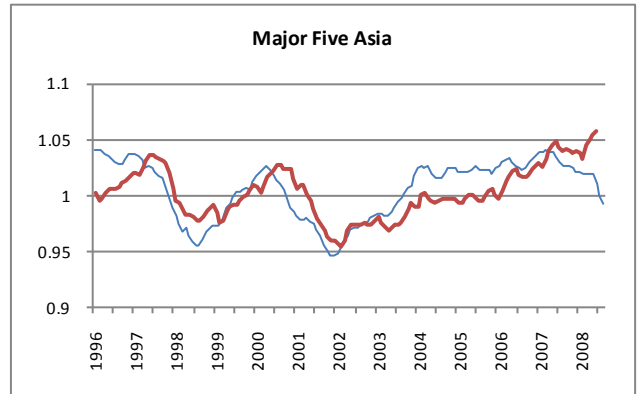
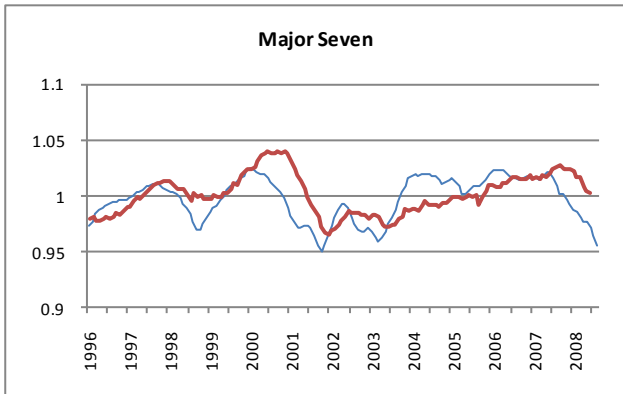
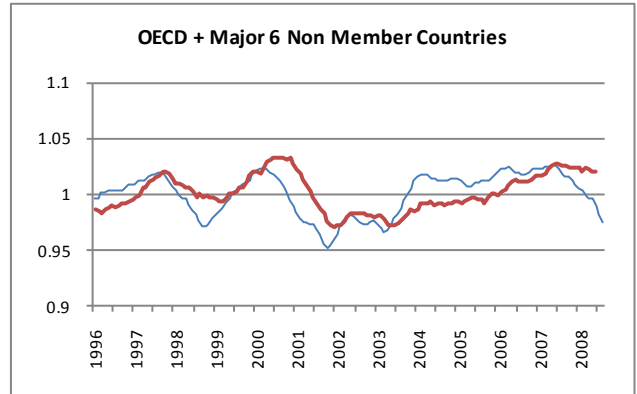
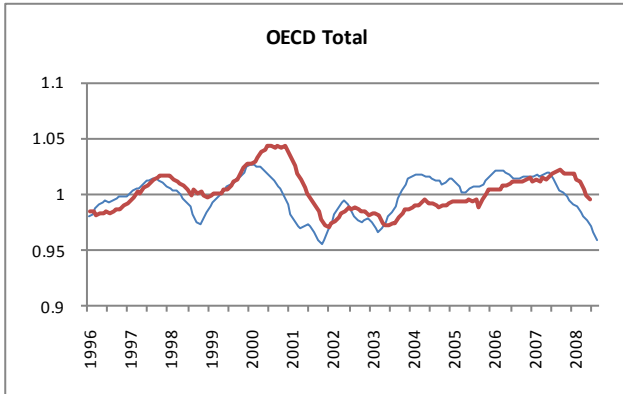


AREA TOTALS

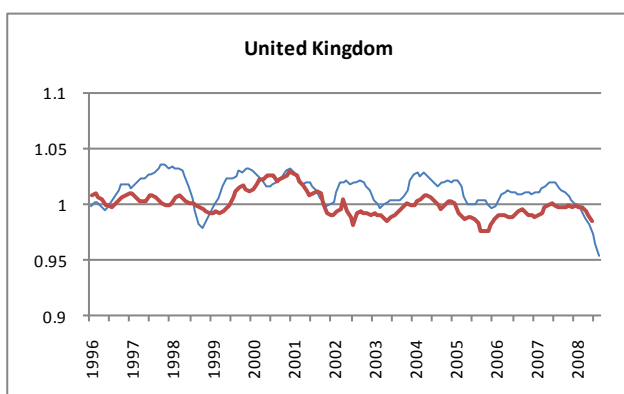
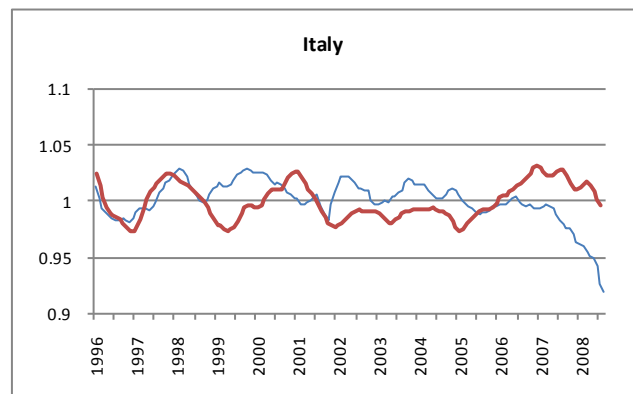
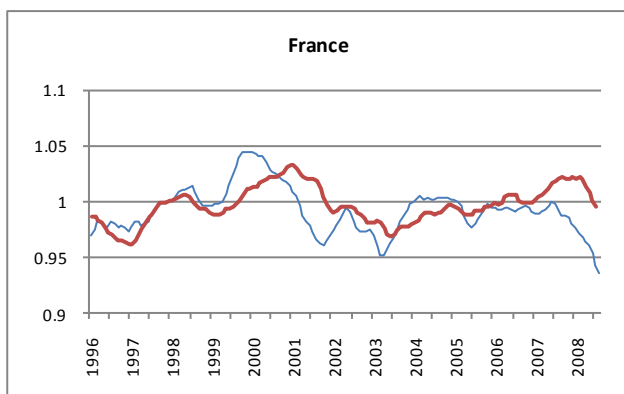
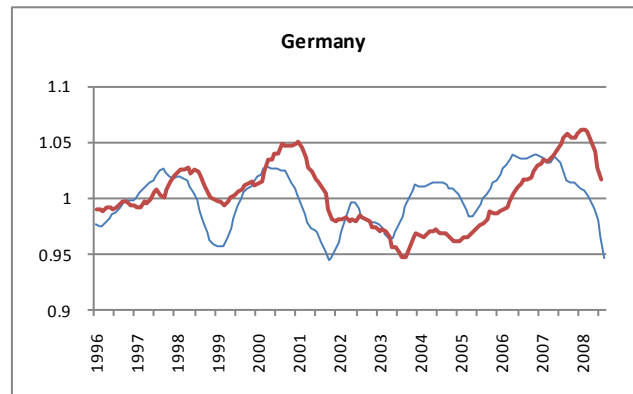
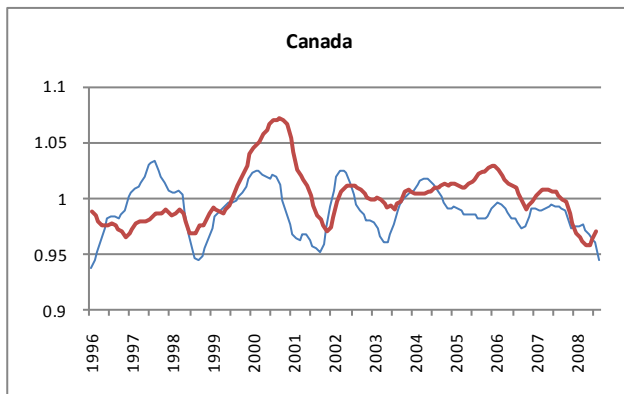
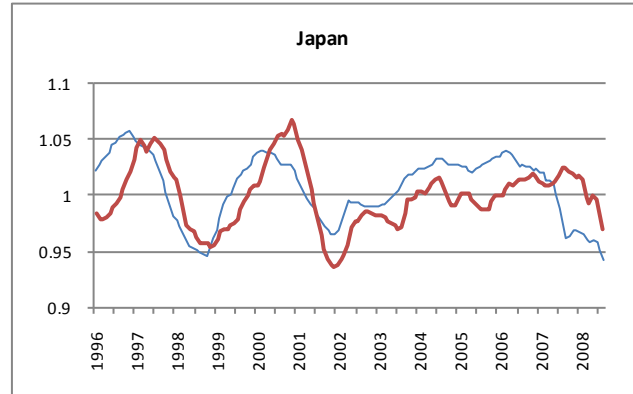
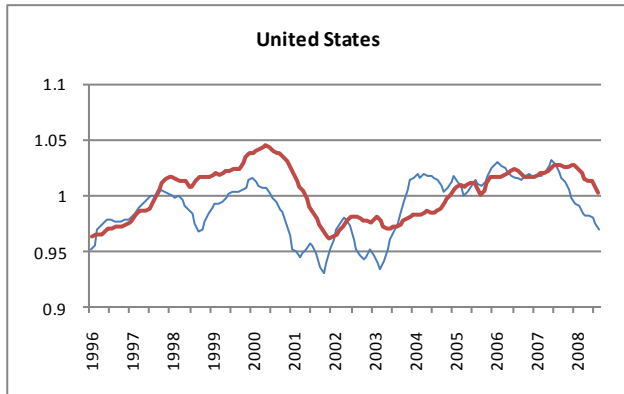
— Reference series — Composite leading indicators



	OECD Total	OECD + Major 6 Non Member Countries	Major Seven	Major Five Asia	Euro area	NAFTA	OECD Europe	Major Four Europe	OECD Eastern Europe
Ratio to trend, amplitude adjusted Leading Indicators (long term average =100)									
August 2007	100.74	101.79	100.83	102.53	99.55	101.85	100.63	100.32	103.65
September 2007	100.25	101.59	100.25	102.57	99.19	101.27	100.26	99.94	103.62
October 2007	100.08	101.50	100.11	102.66	99.12	100.92	100.08	99.88	103.26
November 2007	99.73	101.20	99.69	102.52	98.94	100.17	99.83	99.64	103.39
December 2007	99.43	100.83	99.25	102.16	98.61	99.71	99.53	99.26	103.22
January 2008	99.09	100.51	98.86	102.08	98.25	99.15	99.27	98.90	102.81
February 2008	98.88	100.30	98.57	101.98	97.79	99.11	98.84	98.60	101.71
March 2008	98.30	99.85	98.01	101.81	97.23	98.44	98.28	98.09	100.98
April 2008	97.90	99.68	97.81	101.90	96.73	98.22	97.73	97.76	100.10
May 2008	97.52	99.52	97.66	101.95	96.08	98.14	97.04	97.27	99.35
June 2008	97.15	98.95	97.23	100.93	95.34	98.04	96.28	96.44	98.81
July 2008	96.53	98.21	96.45	99.90	94.21	97.74	95.25	95.15	98.07
August 2008	95.79	97.47	95.60	99.22	93.20	97.13	94.27	93.92	97.13
Change from previous month (point)									
August 2007	-0.72	-0.46	-0.83	-0.42	-0.57	-0.56	-0.55	-0.71	-0.75
September 2007	-0.48	-0.20	-0.58	0.04	-0.37	-0.57	-0.37	-0.38	-0.03
October 2007	-0.17	-0.08	-0.15	0.09	-0.06	-0.36	-0.18	-0.06	-0.35
November 2007	-0.36	-0.30	-0.42	-0.14	-0.18	-0.75	-0.25	-0.25	0.13
December 2007	-0.30	-0.37	-0.44	-0.37	-0.33	-0.46	-0.30	-0.38	-0.17
January 2008	-0.34	-0.32	-0.40	-0.08	-0.36	-0.55	-0.26	-0.36	-0.41
February 2008	-0.21	-0.21	-0.28	-0.10	-0.46	-0.04	-0.43	-0.30	-1.09
March 2008	-0.59	-0.45	-0.56	-0.17	-0.56	-0.67	-0.56	-0.50	-0.73
April 2008	-0.39	-0.17	-0.20	0.09	-0.50	-0.22	-0.55	-0.33	-0.89
May 2008	-0.38	-0.16	-0.15	0.05	-0.64	-0.08	-0.69	-0.49	-0.75
June 2008	-0.38	-0.57	-0.43	-1.02	-0.74	-0.09	-0.76	-0.83	-0.54
July 2008	-0.62	-0.74	-0.78	-1.03	-1.14	-0.30	-1.03	-1.29	-0.73
August 2008	-0.74	-0.74	-0.85	-0.68	-1.01	-0.61	-0.98	-1.23	-0.95
Year on Year change (point)									
August 2007	-0.70	0.04	-0.73	0.25	-1.16	0.49	-0.62	-0.76	-0.64
September 2007	-1.11	-0.09	-1.21	0.20	-1.44	0.12	-0.90	-1.07	-0.64
October 2007	-1.49	-0.45	-1.55	-0.25	-1.65	-0.47	-1.22	-1.35	-1.01
November 2007	-1.90	-0.96	-2.04	-0.90	-1.85	-1.35	-1.50	-1.57	-1.09
December 2007	-2.15	-1.35	-2.40	-1.41	-2.11	-1.70	-1.85	-1.77	-1.76
January 2008	-2.57	-1.82	-2.76	-1.76	-2.42	-2.28	-2.28	-2.14	-2.79
February 2008	-2.78	-2.02	-2.97	-1.96	-2.79	-2.18	-2.76	-2.36	-4.05
March 2008	-3.34	-2.54	-3.47	-2.24	-3.27	-2.89	-3.35	-2.92	-4.94
April 2008	-3.87	-2.82	-3.92	-2.06	-3.74	-3.50	-3.87	-3.33	-5.51
May 2008	-4.42	-3.08	-4.38	-1.85	-4.48	-4.01	-4.59	-4.08	-6.00
June 2008	-4.77	-3.63	-4.90	-2.55	-5.12	-4.58	-5.19	-4.89	-6.04
July 2008	-4.93	-4.03	-5.21	-3.05	-5.91	-4.67	-5.92	-5.88	-6.32
August 2008	-4.95	-4.31	-5.23	-3.31	-6.35	-4.71	-6.35	-6.40	-6.52

MAJOR SEVEN OECD COUNTRIES

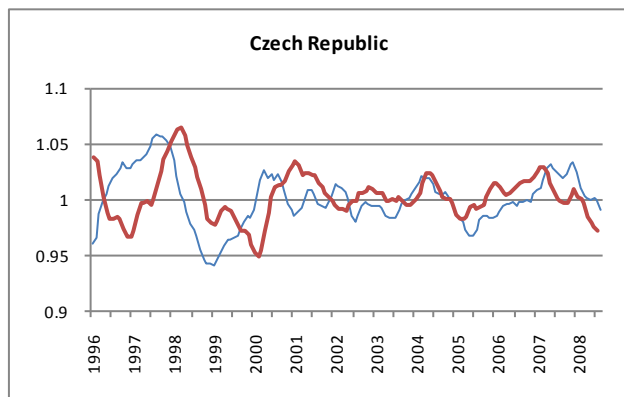
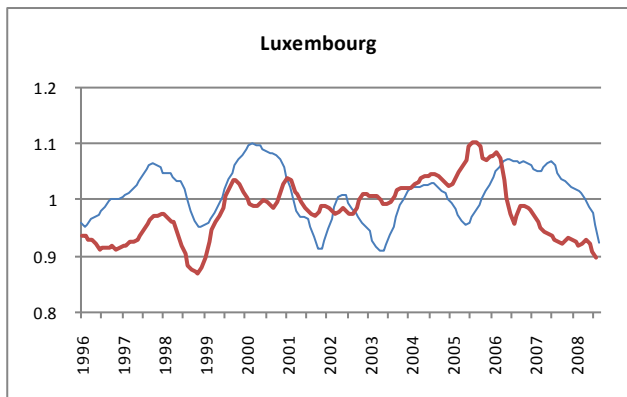
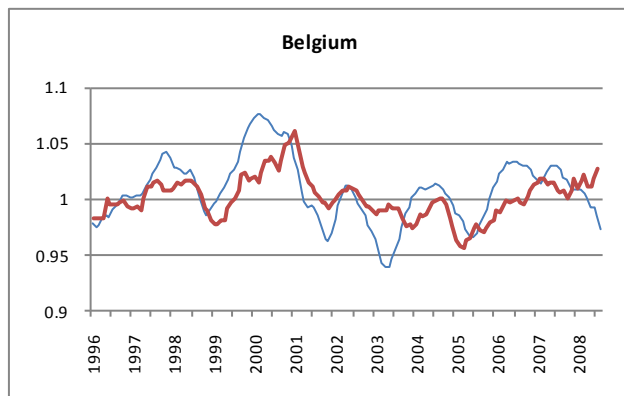
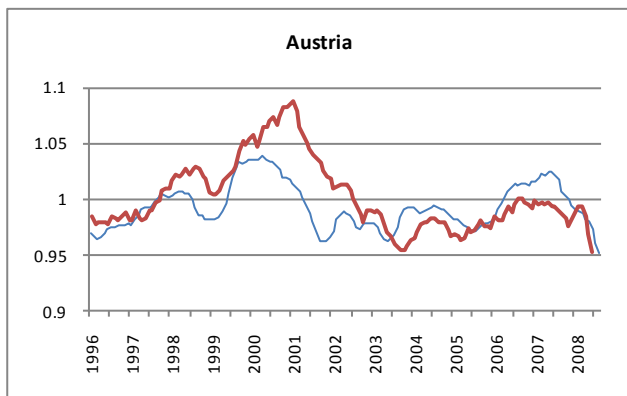
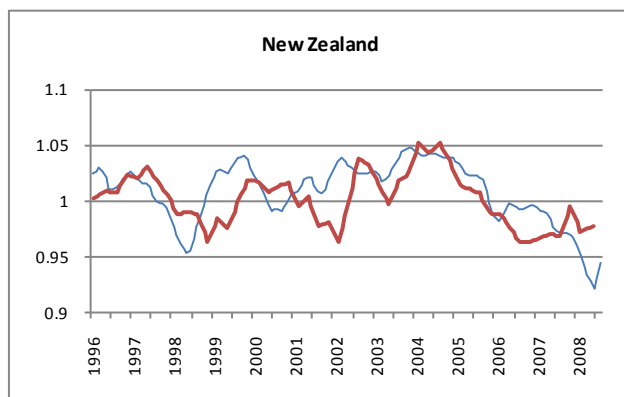
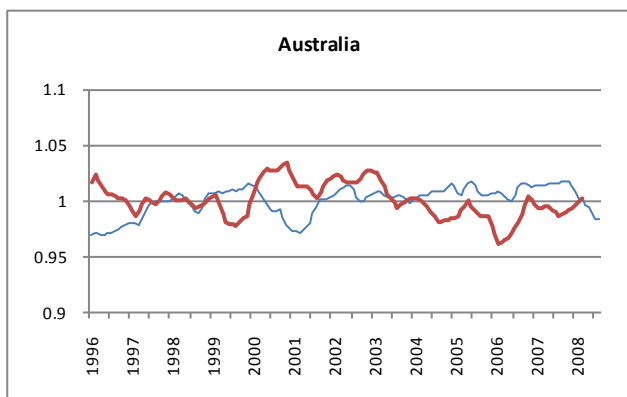
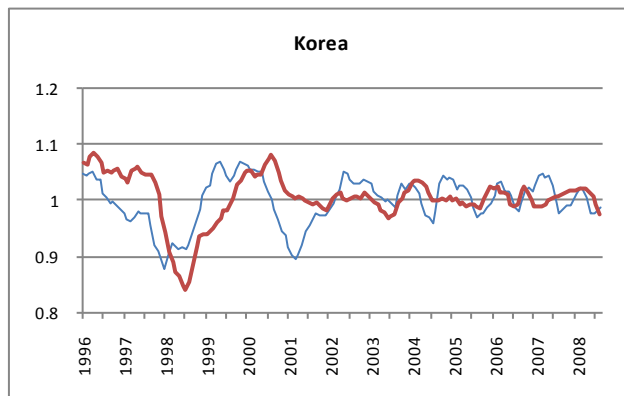
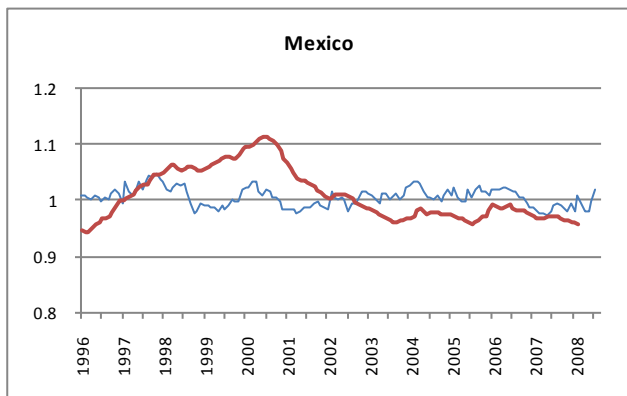
— Reference series — Composite leading indicators



	Canada	United States	Japan	France	Germany	Italy	United Kingdom
Ratio to trend, amplitude adjusted Leading Indicators (long term average =100)							
August 2007	99.19	102.26	97.09	99.15	102.11	97.87	101.42
September 2007	99.05	101.62	96.15	98.75	101.54	97.63	101.19
October 2007	98.80	101.29	96.45	98.76	101.45	97.57	101.10
November 2007	97.87	100.52	96.96	98.63	101.43	97.07	100.68
December 2007	97.20	99.92	96.99	98.11	101.29	96.43	100.37
January 2008	97.37	99.38	96.84	97.63	100.97	96.20	99.95
February 2008	97.50	99.07	96.54	97.13	100.64	95.93	99.85
March 2008	97.54	98.43	95.98	96.77	100.23	95.39	99.11
April 2008	97.16	98.31	95.83	96.46	99.85	95.21	98.70
May 2008	96.73	98.26	96.08	96.05	99.11	95.02	98.19
June 2008	96.27	98.03	95.88	95.39	98.08	94.29	97.36
July 2008	95.98	97.51	95.23	94.36	96.50	92.72	96.41
August 2008	94.50	96.98	94.29	93.56	94.48	91.96	95.35
Change from previous month (point)							
August 2007	-0.11	-0.69	-1.73	-0.63	-1.11	-0.47	-0.48
September 2007	-0.14	-0.64	-0.94	-0.41	-0.57	-0.24	-0.23
October 2007	-0.24	-0.33	0.30	0.01	-0.09	-0.06	-0.09
November 2007	-0.93	-0.77	0.51	-0.13	-0.02	-0.50	-0.42
December 2007	-0.68	-0.60	0.03	-0.52	-0.14	-0.64	-0.31
January 2008	0.17	-0.54	-0.16	-0.48	-0.32	-0.23	-0.41
February 2008	0.13	-0.30	-0.30	-0.50	-0.33	-0.27	-0.11
March 2008	0.04	-0.64	-0.56	-0.36	-0.40	-0.54	-0.74
April 2008	-0.38	-0.12	-0.16	-0.30	-0.38	-0.18	-0.41
May 2008	-0.43	-0.04	0.26	-0.42	-0.75	-0.18	-0.50
June 2008	-0.46	-0.23	-0.21	-0.66	-1.03	-0.73	-0.84
July 2008	-0.29	-0.52	-0.65	-1.03	-1.58	-1.57	-0.95
August 2008	-1.48	-0.53	-0.94	-0.80	-2.02	-0.76	-1.06
Year on Year change (point)							
August 2007	1.45	0.63	-5.64	-0.15	-1.47	-1.89	0.54
September 2007	1.73	0.11	-6.53	-0.63	-1.96	-1.96	0.39
October 2007	1.41	-0.49	-6.14	-0.83	-2.30	-2.13	0.05
November 2007	-0.46	-1.45	-5.35	-0.82	-2.50	-2.36	-0.42
December 2007	-1.78	-1.91	-5.41	-0.99	-2.66	-2.88	-0.44
January 2008	-1.62	-2.47	-5.29	-1.32	-2.86	-3.20	-1.07
February 2008	-1.37	-2.70	-5.48	-1.84	-2.89	-3.52	-1.18
March 2008	-1.31	-3.41	-5.36	-2.26	-2.97	-4.34	-2.25
April 2008	-1.90	-3.96	-5.56	-2.74	-3.39	-4.40	-2.90
May 2008	-2.47	-4.53	-5.00	-3.58	-4.57	-4.24	-3.81
June 2008	-3.08	-5.25	-4.30	-4.61	-5.54	-4.50	-4.68
July 2008	-3.31	-5.45	-3.59	-5.42	-6.72	-5.61	-5.49
August 2008	-4.68	-5.28	-2.81	-5.59	-7.63	-5.91	-6.07

OTHER OECD MEMBER COUNTRIES

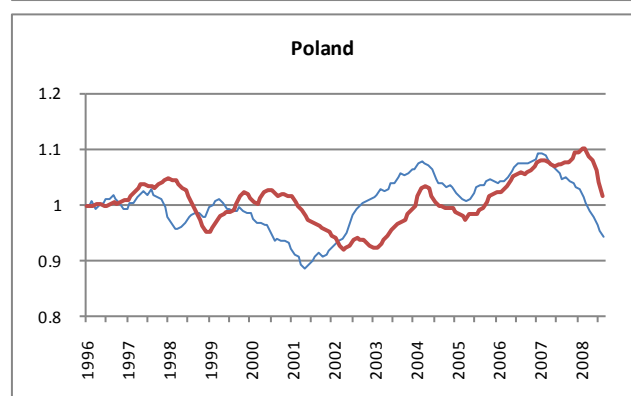
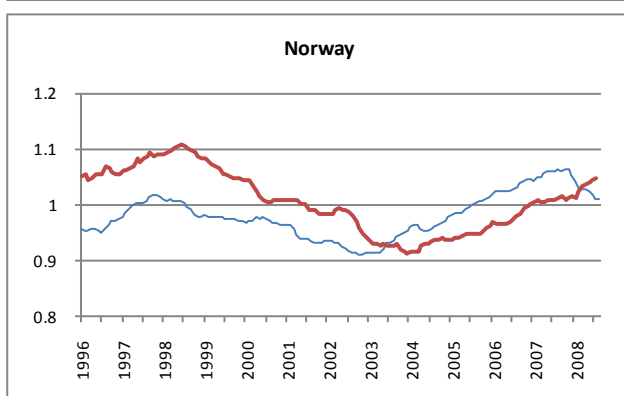
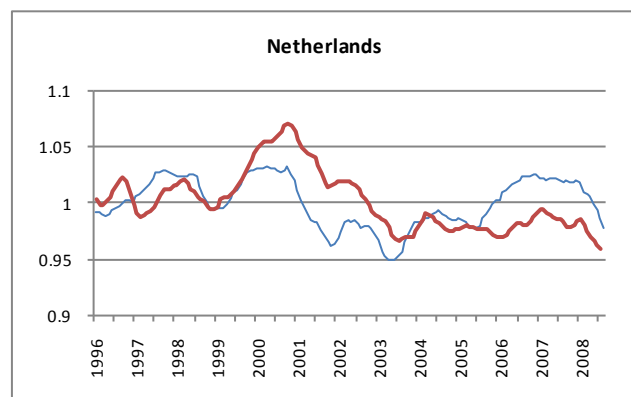
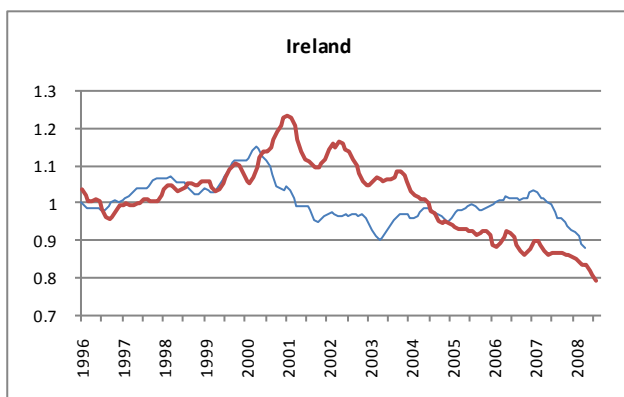
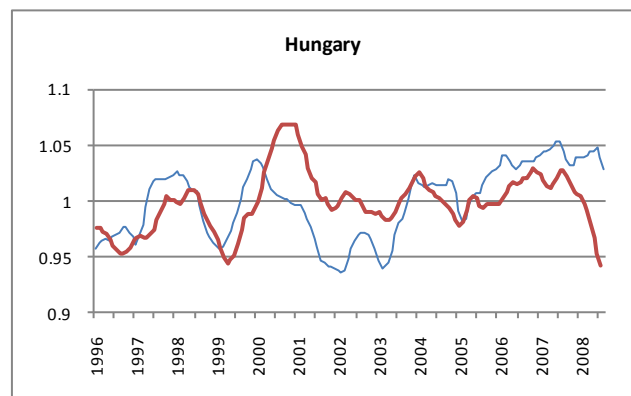
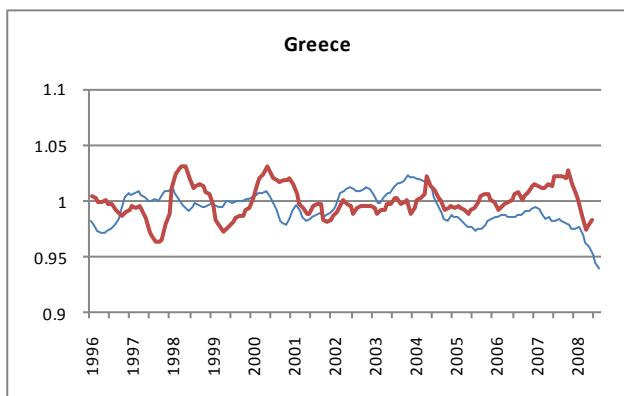
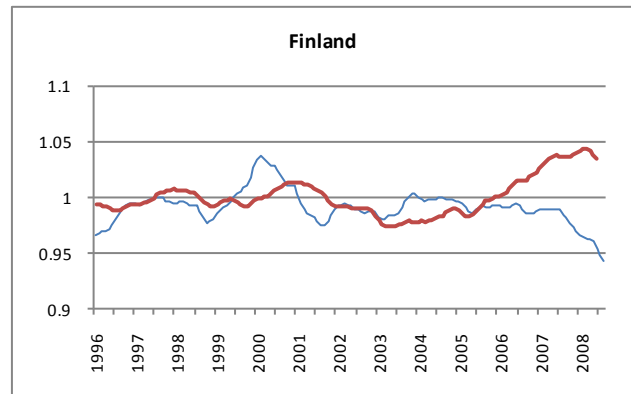
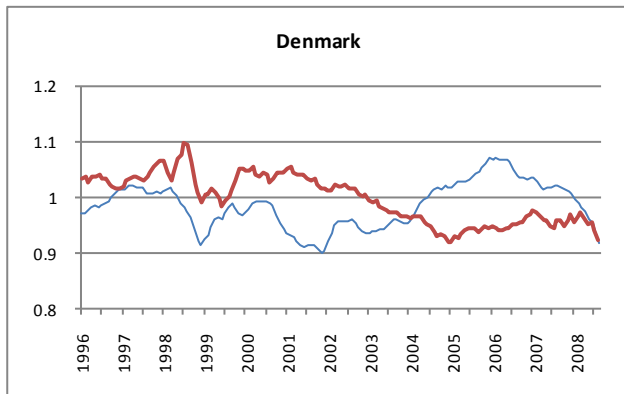
— Reference series — Composite leading indicators



	Mexico	Korea	Australia	New Zealand	Austria	Belgium	Luxembourg	Czech Republic
Ratio to trend, amplitude adjusted Leading Indicators (long term average =100)								
August 2007	99.46	97.64	101.68	97.14	101.67	102.53	104.78	102.10
September 2007	99.20	98.22	101.72	97.18	100.68	101.95	103.67	101.86
October 2007	98.43	98.86	101.78	97.10	100.26	101.61	103.24	102.27
November 2007	98.18	98.98	101.72	96.95	99.90	101.02	102.67	103.04
December 2007	99.56	99.87	101.38	96.76	99.39	100.73	102.25	103.21
January 2008	98.11	101.06	100.93	96.05	99.10	100.79	101.99	102.36
February 2008	100.97	102.10	100.20	95.19	98.90	100.78	101.65	100.98
March 2008	99.29	101.82	100.09	94.12	98.70	100.51	100.99	100.23
April 2008	98.02	100.32	99.67	93.44	98.13	100.15	100.27	100.01
May 2008	97.84	97.54	99.35	92.81	97.88	99.23	98.66	99.83
June 2008	99.79	97.65	98.68	92.11	97.23	99.13	97.55	100.12
July 2008	102.09	97.83	98.29	92.97	95.98	98.52	95.40	99.90
August 2008		98.65	98.32	94.43	95.12	97.23	92.16	99.06
Change from previous month (point)								
August 2007	0.48	-1.80	0.08	-0.19	-0.42	-0.44	-1.51	-0.24
September 2007	-0.25	0.58	0.04	0.05	-0.99	-0.58	-1.12	-0.24
October 2007	-0.77	0.64	0.06	-0.08	-0.42	-0.34	-0.42	0.41
November 2007	-0.25	0.12	-0.06	-0.16	-0.36	-0.58	-0.58	0.76
December 2007	1.38	0.90	-0.34	-0.19	-0.51	-0.29	-0.42	0.17
January 2008	-1.45	1.19	-0.46	-0.71	-0.28	0.06	-0.26	-0.85
February 2008	2.86	1.03	-0.73	-0.85	-0.20	-0.02	-0.34	-1.38
March 2008	-1.68	-0.27	-0.11	-1.08	-0.20	-0.27	-0.65	-0.74
April 2008	-1.27	-1.50	-0.42	-0.68	-0.57	-0.36	-0.72	-0.22
May 2008	-0.19	-2.78	-0.32	-0.63	-0.25	-0.92	-1.62	-0.18
June 2008	1.95	0.11	-0.67	-0.70	-0.65	-0.09	-1.11	0.29
July 2008	2.30	0.18	-0.39	0.86	-1.25	-0.61	-2.14	-0.22
August 2008		0.81	0.03	1.46	-0.87	-1.30	-3.24	-0.84
Year on Year change (point)								
August 2007	-2.12	-0.48	0.48	-2.11	0.43	-0.60	-2.03	2.44
September 2007	-1.52	-1.23	0.05	-2.04	-0.64	-1.02	-2.92	2.07
October 2007	-2.17	-2.81	0.20	-2.32	-1.03	-1.25	-3.48	2.36
November 2007	-1.14	-3.31	0.29	-2.63	-1.36	-1.55	-3.95	3.28
December 2007	0.83	-1.51	0.10	-2.93	-2.11	-1.32	-3.89	2.73
January 2008	-0.75	-1.36	-0.46	-3.31	-2.45	-0.85	-3.64	1.60
February 2008	3.13	-2.26	-1.18	-3.91	-3.03	-0.57	-3.41	0.05
March 2008	1.62	-2.97	-1.35	-4.87	-3.51	-1.11	-3.99	-1.46
April 2008	0.22	-3.82	-1.75	-5.39	-3.89	-2.20	-5.45	-2.76
May 2008	0.57	-6.85	-2.26	-5.58	-4.49	-3.62	-7.98	-3.24
June 2008	1.75	-4.90	-2.95	-5.58	-5.17	-3.88	-9.19	-2.65
July 2008	3.12	-1.60	-3.31	-4.36	-6.11	-4.44	-10.89	-2.44
August 2008		1.01	-3.36	-2.70	-6.55	-5.30	-12.62	-3.04

OTHER OECD MEMBER COUNTRIES

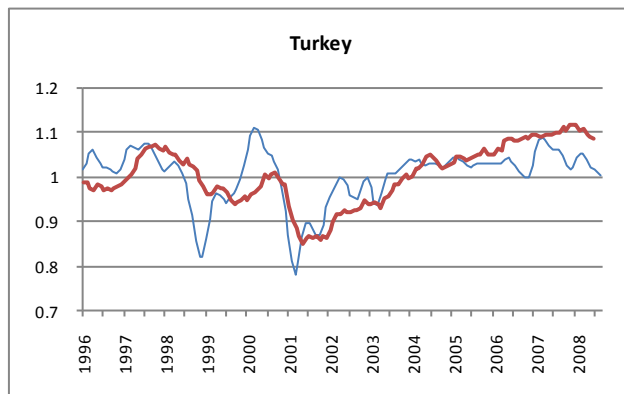
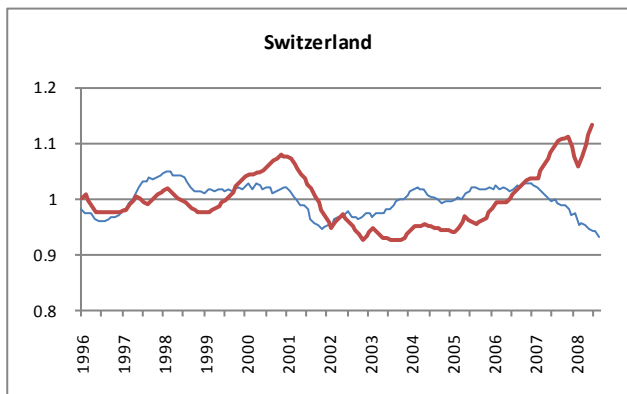
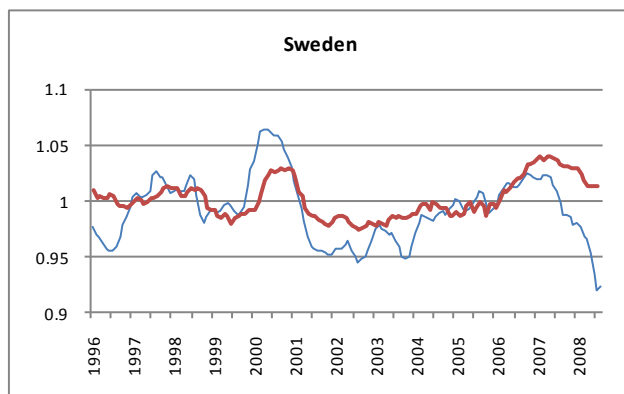
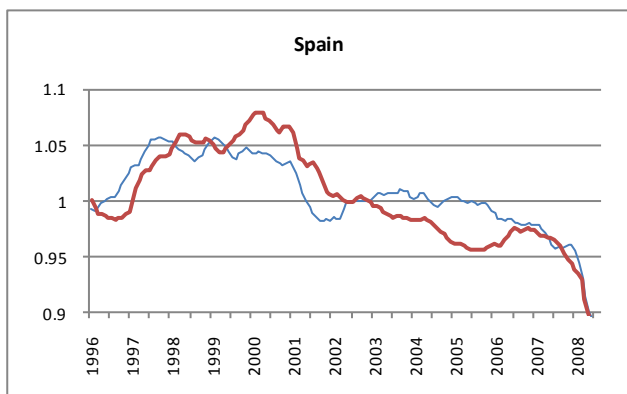
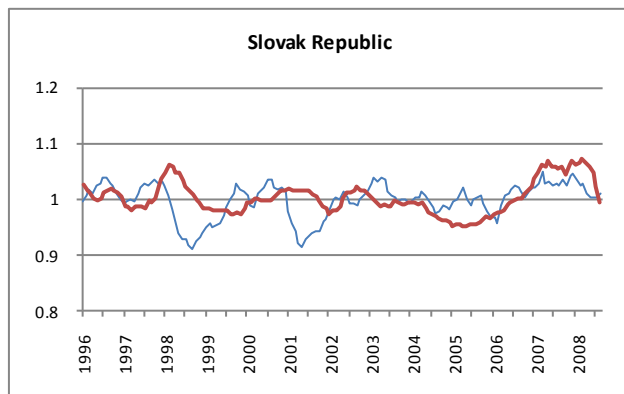
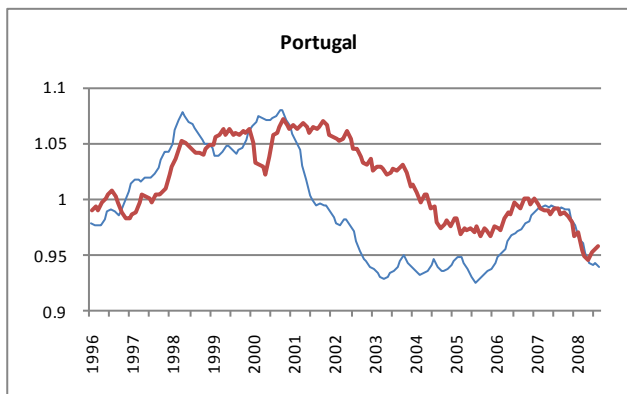
— Reference series — Composite leading indicators



	Denmark	Finland	Greece	Hungary	Ireland	Netherlands	Norway	Poland
Ratio to trend, amplitude adjusted Leading Indicators (long term average =100)								
August 2007	102.00	98.43	98.34	104.45	96.07	101.85	106.19	104.51
September 2007	101.62	98.13	98.17	103.64	95.92	102.02	105.98	104.66
October 2007	101.26	97.65	98.04	103.23	95.11	101.85	106.16	104.15
November 2007	100.89	97.27	97.89	103.21	94.12	101.76	106.07	103.77
December 2007	100.54	96.92	97.48	103.86	92.99	101.99	105.22	103.03
January 2008	99.80	96.67	97.45	103.83	92.01	101.79	103.98	102.81
February 2008	99.06	96.42	97.62	103.92	91.02	101.04	102.87	101.41
March 2008	98.38	96.28	96.93	103.99	89.25	100.84	102.74	100.25
April 2008	97.63	96.26	96.30	104.42	88.01	100.62	102.80	98.74
May 2008	96.24	96.03	95.91	104.47		99.86	102.40	97.51
June 2008	95.42	95.45	95.24	104.84		99.43	101.59	96.14
July 2008	93.80	94.84	94.51	103.83		98.72	101.07	95.18
August 2008	91.92	94.35	93.98	102.82		97.78	100.97	93.95
Change from previous month (point)								
August 2007	0.00	-0.41	0.07	-0.78	-1.45	-0.11	0.19	-1.06
September 2007	-0.38	-0.29	-0.17	-0.81	-0.14	0.17	-0.21	0.16
October 2007	-0.36	-0.48	-0.13	-0.41	-0.81	-0.17	0.18	-0.51
November 2007	-0.37	-0.38	-0.15	-0.02	-0.99	-0.09	-0.09	-0.38
December 2007	-0.35	-0.36	-0.41	0.65	-1.13	0.23	-0.85	-0.74
January 2008	-0.74	-0.24	-0.04	-0.04	-0.98	-0.20	-1.24	-0.22
February 2008	-0.74	-0.25	0.17	0.09	-0.99	-0.75	-1.11	-1.40
March 2008	-0.68	-0.14	-0.70	0.08	-1.77	-0.19	-0.12	-1.16
April 2008	-0.75	-0.02	-0.62	0.43	-1.24	-0.23	0.05	-1.50
May 2008	-1.39	-0.23	-0.39	0.05		-0.76	-0.40	-1.24
June 2008	-0.83	-0.58	-0.67	0.38		-0.43	-0.81	-1.36
July 2008	-1.62	-0.61	-0.73	-1.01		-0.71	-0.52	-0.97
August 2008	-1.88	-0.49	-0.53	-1.01		-0.94	-0.10	-1.23
Year on Year change (point)								
August 2007	-1.95	-0.53	-0.36	1.00	-5.31	-0.52	3.20	-2.70
September 2007	-1.76	-0.43	-0.49	0.10	-4.78	-0.27	2.37	-2.51
October 2007	-2.31	-0.95	-0.96	-0.29	-6.18	-0.46	2.00	-3.19
November 2007	-2.38	-1.26	-1.23	-0.34	-7.44	-0.76	1.70	-3.87
December 2007	-3.03	-1.85	-1.77	0.05	-9.83	-0.55	0.94	-5.07
January 2008	-3.67	-2.25	-1.91	-0.24	-11.47	-0.48	-0.29	-6.26
February 2008	-3.73	-2.57	-1.64	-0.45	-11.70	-1.12	-1.77	-7.71
March 2008	-3.34	-2.72	-1.94	-0.36	-12.19	-1.21	-2.21	-8.49
April 2008	-3.94	-2.65	-2.16	-0.11	-13.13	-1.55	-2.75	-9.24
May 2008	-5.48	-2.94	-2.56	-0.52		-2.39	-3.43	-9.62
June 2008	-6.36	-3.46	-3.02	-0.46		-2.82	-4.41	-10.13
July 2008	-8.20	-4.00	-3.77	-1.40		-3.24	-4.93	-10.39
August 2008	-10.08	-4.08	-4.36	-1.63		-4.07	-5.22	-10.56

OTHER OECD MEMBER COUNTRIES

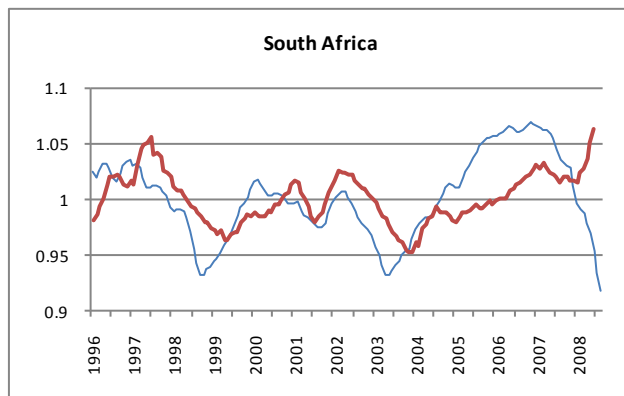
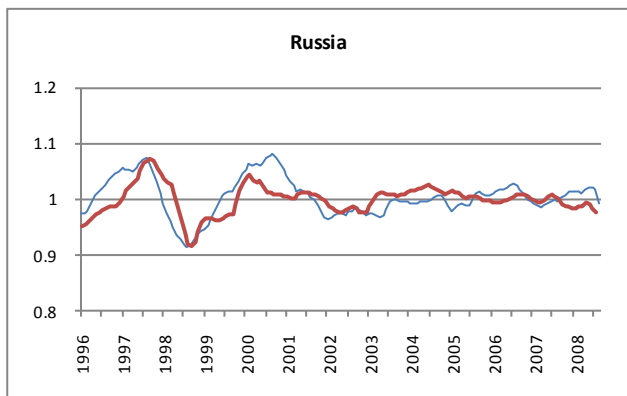
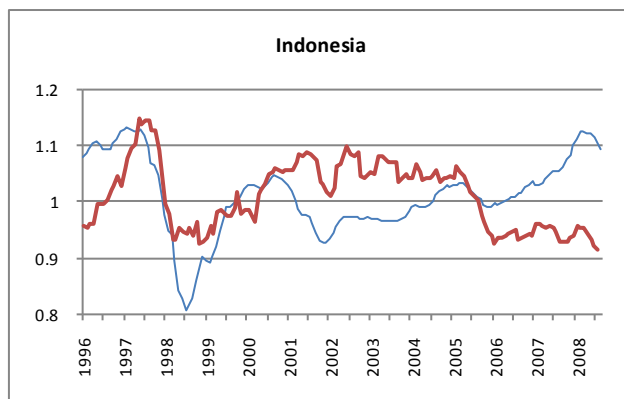
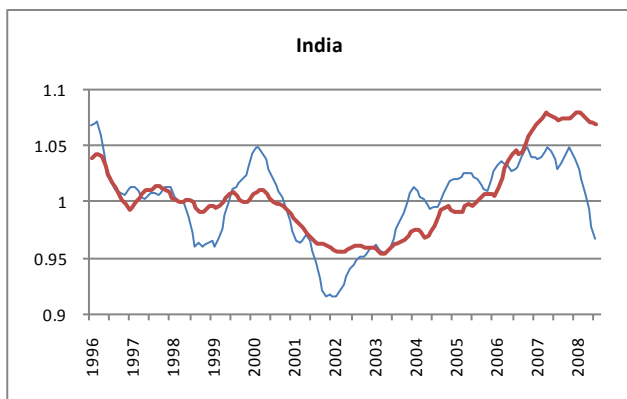
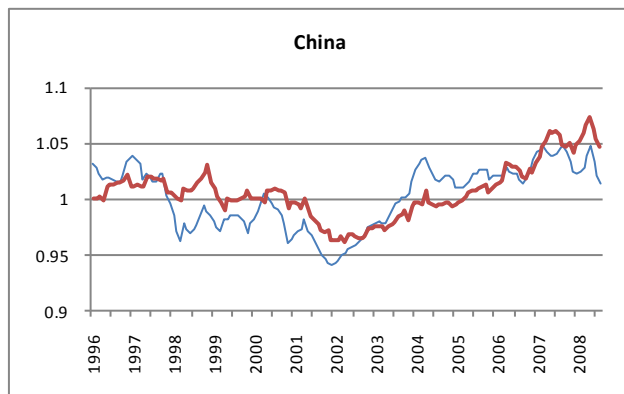
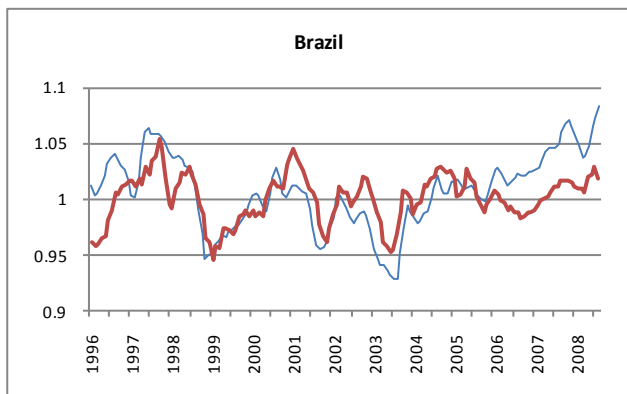
— Reference series — Composite leading indicators



	Portugal	Slovak Republic	Spain	Sweden	Switzerland	Turkey
Ratio to trend, amplitude adjusted Leading Indicators (long term average =100)						
August 2007	99.14	102.54	95.90	99.69	99.02	105.95
September 2007	99.16	103.52	95.67	98.70	98.87	104.63
October 2007	99.01	102.30	95.98	98.71	98.61	102.60
November 2007	99.07	104.11	96.06	98.48	97.99	101.46
December 2007	98.25	104.73	96.07	97.90	97.09	102.08
January 2008	97.54	103.50	95.48	97.92	97.18	104.15
February 2008	96.28	102.53	94.52	97.67	94.98	105.29
March 2008	96.02	102.69	93.04	96.79	95.64	105.12
April 2008	95.20	101.08	91.48	96.53	95.28	103.62
May 2008	94.17	100.14	90.02	95.25	94.58	102.09
June 2008	94.00	100.44	89.22	93.36	94.04	101.48
July 2008	94.16	100.35	88.74	91.96	94.16	101.04
August 2008	93.87	100.89	88.93	92.38	92.97	100.18
Change from previous month (point)						
August 2007	-0.06	-0.13	0.10	-1.09	-0.68	-0.10
September 2007	0.02	0.98	-0.24	-1.00	-0.16	-1.33
October 2007	-0.15	-1.22	0.31	0.01	-0.25	-2.03
November 2007	0.06	1.81	0.08	-0.22	-0.62	-1.14
December 2007	-0.82	0.61	0.01	-0.58	-0.89	0.62
January 2008	-0.71	-1.23	-0.58	0.02	0.08	2.07
February 2008	-1.26	-0.97	-0.97	-0.25	-2.20	1.14
March 2008	-0.26	0.17	-1.48	-0.88	0.66	-0.17
April 2008	-0.82	-1.61	-1.56	-0.26	-0.36	-1.50
May 2008	-1.02	-0.94	-1.46	-1.28	-0.70	-1.54
June 2008	-0.18	0.30	-0.79	-1.89	-0.54	-0.60
July 2008	0.16	-0.08	-0.49	-1.39	0.11	-0.44
August 2008	-0.29	0.54	0.19	0.42	-1.19	-0.86
Year on Year change (point)						
August 2007	2.03	0.42	-2.19	-1.71	-3.35	4.88
September 2007	1.93	1.98	-2.28	-3.25	-3.22	4.15
October 2007	1.25	1.92	-1.82	-3.68	-4.11	2.58
November 2007	1.00	2.78	-2.01	-3.81	-4.81	1.53
December 2007	-0.35	2.62	-1.87	-4.12	-5.47	-0.30
January 2008	-1.32	1.33	-2.45	-3.99	-5.38	-1.29
February 2008	-3.03	-0.25	-3.31	-4.20	-6.95	-2.82
March 2008	-3.26	-2.22	-4.55	-5.49	-5.53	-3.73
April 2008	-4.20	-1.64	-5.63	-5.73	-5.73	-4.58
May 2008	-5.09	-2.94	-6.54	-6.77	-5.51	-5.05
June 2008	-5.38	-2.02	-6.85	-7.97	-5.45	-4.72
July 2008	-5.04	-2.32	-7.06	-8.82	-5.54	-5.01
August 2008	-5.28	-1.66	-6.97	-7.31	-6.06	-5.77

MAJOR NON OECD MEMBER COUNTRIES

— Reference series — Composite leading indicators



	Brazil	China	India	Indonesia	Russia	South Africa
Ratio to trend, amplitude adjusted Leading Indicators (long term average =100)						
August 2007	104.92	104.52	102.84	105.40	99.61	103.55
September 2007	106.08	104.70	103.34	105.93	100.01	103.38
October 2007	106.72	104.21	104.08	107.33	100.56	103.14
November 2007	107.08	103.28	104.73	108.23	101.16	102.92
December 2007	106.63	102.37	104.37	109.96	101.37	101.20
January 2008	105.63	102.26	103.82	111.14	101.21	99.70
February 2008	104.84	102.38	102.78	112.45	101.12	99.10
March 2008	103.71	102.72	101.90	112.37	100.88	98.84
April 2008	103.95	103.73	100.68	112.02	101.43	97.92
May 2008	104.85	104.69	99.27	112.10	102.01	97.00
June 2008	106.55	103.35	97.73	111.58	101.87	95.45
July 2008	107.30	102.07	96.53	110.69	101.59	93.55
August 2008	108.34	101.39		109.24	99.26	91.90
Change from previous month (point)						
August 2007	0.35	0.48	-0.81	0.09	-0.05	-0.91
September 2007	1.16	0.18	0.49	0.53	0.40	-0.16
October 2007	0.64	-0.49	0.74	1.40	0.54	-0.25
November 2007	0.35	-0.93	0.66	0.90	0.60	-0.21
December 2007	-0.44	-0.91	-0.37	1.73	0.21	-1.72
January 2008	-1.00	-0.12	-0.54	1.18	-0.16	-1.50
February 2008	-0.79	0.12	-1.04	1.32	-0.09	-0.59
March 2008	-1.13	0.34	-0.88	-0.08	-0.24	-0.26
April 2008	0.24	1.02	-1.21	-0.35	0.55	-0.92
May 2008	0.90	0.96	-1.41	0.07	0.58	-0.92
June 2008	1.70	-1.34	-1.55	-0.52	-0.13	-1.55
July 2008	0.75	-1.29	-1.20	-0.88	-0.28	-1.90
August 2008	1.05	-0.68		-1.45	-2.33	-1.65
Year on Year change (point)						
August 2007	2.65	2.82	-0.12	4.04	-2.78	-2.46
September 2007	3.95	3.37	-0.53	4.35	-1.58	-2.84
October 2007	4.65	2.41	-0.58	4.77	-0.19	-3.43
November 2007	4.70	0.49	-0.16	5.32	1.34	-4.03
December 2007	4.13	-1.15	0.42	6.39	2.01	-5.57
January 2008	3.01	-1.93	-0.05	8.25	2.06	-6.83
February 2008	2.05	-1.91	-0.92	9.62	2.45	-7.30
March 2008	0.31	-1.97	-1.97	9.29	2.43	-7.43
April 2008	-0.25	-0.41	-3.85	7.91	2.69	-8.32
May 2008	0.31	0.91	-5.45	7.36	2.85	-8.96
June 2008	2.03	-0.47	-6.74	6.33	2.50	-10.00
July 2008	2.73	-1.98	-7.13	5.39	1.93	-10.90
August 2008	3.43	-3.14		3.84	-0.35	-11.65