

OECD Composite Leading Indicators enter slowdown phase in most major OECD economies

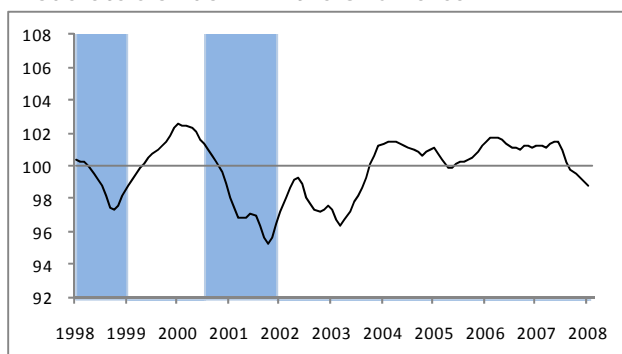
The latest composite leading indicators (CLIs) suggest that a slowdown in economic activity lies ahead in the OECD area. January 2008 data indicate a weakening outlook for all the major seven economies. The latest data for major OECD non-member economies point to a potential downturn in China and India, while continued expansion is ahead in Brazil and Russia.

The CLI for the **OECD area** decreased by 0.2 point in January 2008 and was 2.4 points lower than in January 2007. The CLI for the **United States** fell by 0.9 point in January and it was 2.6 points lower than a year ago. The **Euro area's** CLI decreased by 0.1 point in January and stood 2.4 points lower than a year ago. In January, the CLI for **Japan** increased by 0.7 point, but it was 4.4 points lower than a year ago. The CLI for Japan is strongly influenced by its "dwellings started" component, showing a transitory change caused by modifications of the Building Standard Law. The CLI, however, has a weakening tendency even when the effect of this component is filtered out.

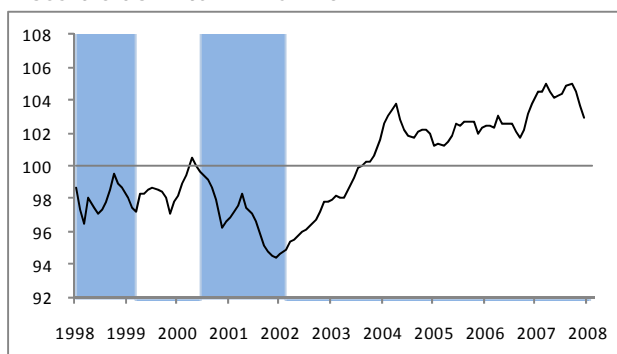
The CLI for the **United Kingdom** fell by 0.4 point in January 2008 and it was 1.0 point lower than a year ago. The CLI for **Canada** decreased 0.3 point in January and was 2.4 points lower than a year ago. For **France**, the CLI fell by 0.4 point in January and was 1.4 point lower than a year ago. The CLI for **Germany** decreased by 0.1 point in January and was 2.6 points lower than a year ago. For **Italy**, the CLI increased by 0.4 point in January but stood 3.5 points lower than a year ago.

The CLI for **China** was down by 0.7 point in December 2007 (not updated from previous month) and stood 0.9 point lower than a year ago. The CLI for **India** fell by 0.9 point in December 2007 and was 1.4 point lower than in December 2006. The CLI for **Russia** fell by 0.3 point in January, but its level was 2.5 points higher than a year ago. In January 2008 the CLI for **Brazil** dropped 0.6 point, but it stood 4.2 points higher than a year ago.

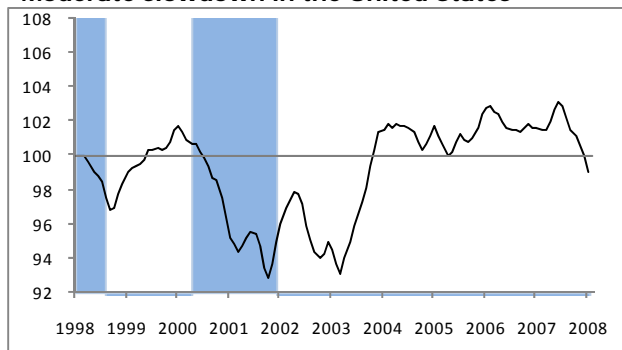
Moderate slowdown in the OECD area



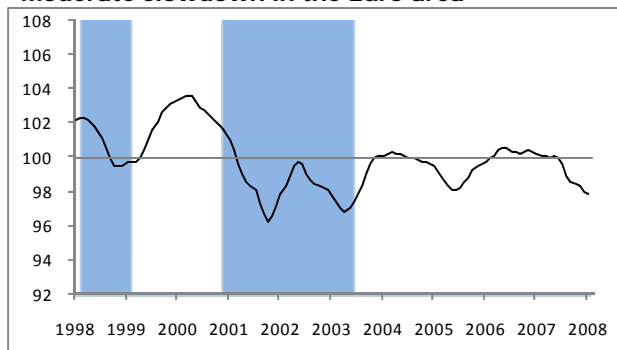
Possible downturn in China



Moderate slowdown in the United States

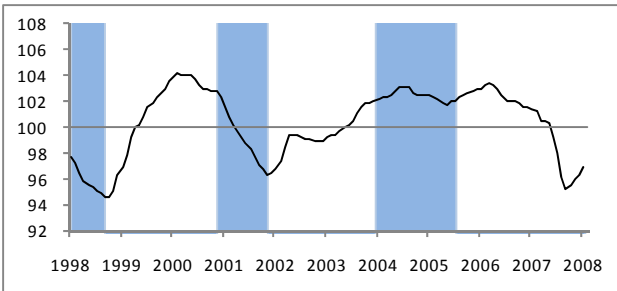


Moderate slowdown in the Euro area

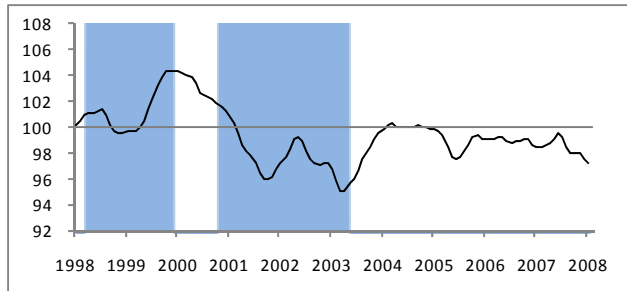


The above graphs show each countries growth cycle outlook based on the CLI which may signal turning points in economic activity approximately six months in advance. Shaded areas represent observed growth cycle downturns (measured from peak to trough) in the reference series (economic activity).

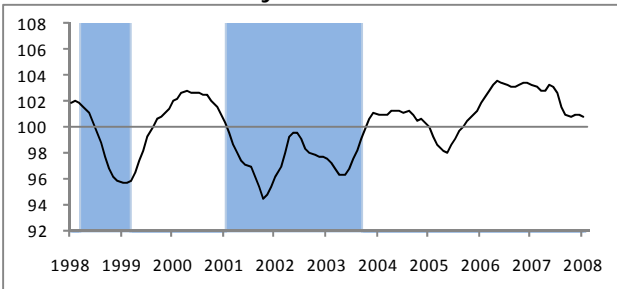
Slowdown in Japan



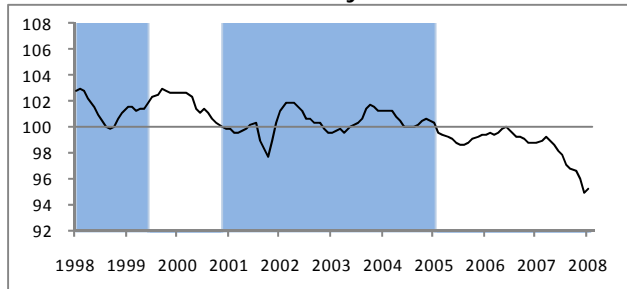
Moderate slowdown in France



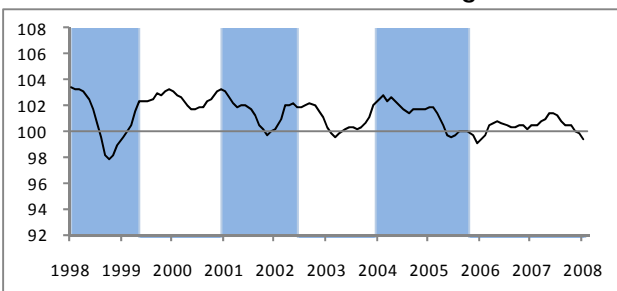
Downturn in Germany



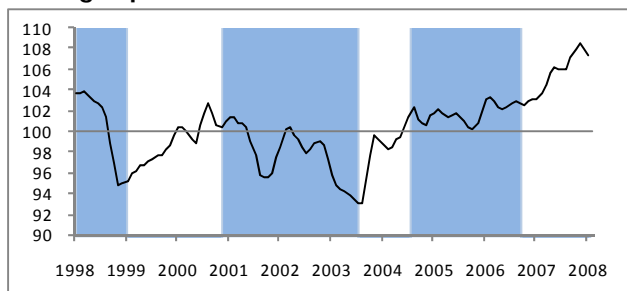
Continued slowdown in Italy



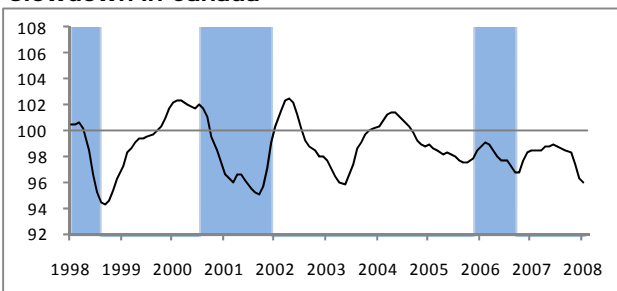
Moderate slowdown in the United Kingdom



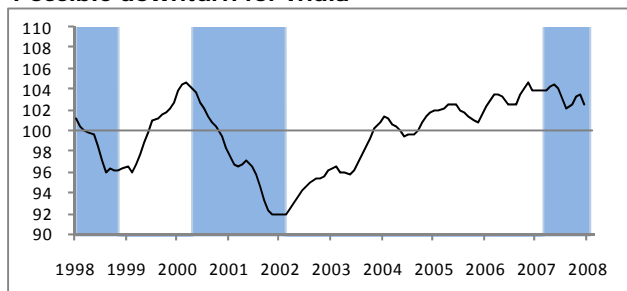
Strong expansion in Brazil



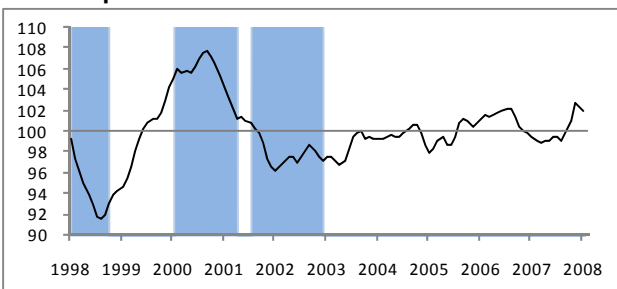
Slowdown in Canada



Possible downturn for India



Slow expansion Russia



The above graphs show each countries' growth cycle outlook based on the CLI which may signal turning points in economic activity approximately six months in advance. Shaded areas represent observed growth cycle downturns (measured from peak to trough) in the reference series (economic activity).

Table 1: Composite Leading Indicators

	Ratio to trend, amplitude adjusted (long term average =100)					Change from previous month (point)					Year on Year change (point)	Growth cycle outlook**	
	2007		2008			2007		2008					Latest month
	Sep	Oct	Nov	Dec	Jan	Sep	Oct	Nov	Dec	Jan			
OECD Area	99.8	99.6	99.3	99.1	98.9	-0.5	-0.2	-0.3	-0.2	-0.2	-2.4	moderate slowdown	
Euro Area	98.5	98.5	98.3	98.0	97.9	-0.4	-0.1	-0.2	-0.3	-0.1	-2.4	moderate slowdown	
Major Five Asia*	102.4	102.5	102.3	101.9		0.0	0.1	-0.2	-0.4		-1.8	moderate downturn	
Major Seven	99.8	99.6	99.3	98.9	98.5	-0.6	-0.2	-0.3	-0.4	-0.4	-2.7	moderate slowdown	
Canada	98.5	98.3	97.4	96.4	96.1	-0.1	-0.2	-0.9	-1.0	-0.3	-2.4	slowdown	
France	98.0	98.0	97.9	97.5	97.1	-0.5	0.0	-0.1	-0.4	-0.4	-1.4	moderate slowdown	
Japan	95.2	95.5	96.0	96.3	97.0	-1.0	0.3	0.5	0.2	0.7	-4.4	slowdown	
Germany	101.0	100.9	100.9	100.9	100.8	-0.6	-0.1	0.0	0.0	-0.1	-2.6	downturn	
Italy	96.7	96.6	96.1	94.9	95.3	-0.4	-0.1	-0.5	-1.1	0.4	-3.5	slowdown	
United Kingdom	100.6	100.4	100.0	99.8	99.4	-0.2	-0.1	-0.4	-0.2	-0.4	-1.0	moderate slowdown	
United States	101.5	101.1	100.5	99.9	99.0	-0.7	-0.3	-0.6	-0.5	-0.9	-2.6	moderate slowdown	
Brazil	107.2	108.0	108.6	108.0	107.4	1.1	0.8	0.6	-0.6	-0.6	4.2	strong expansion	
China	105.0	104.6	103.7	103.0		0.1	-0.5	-0.8	-0.7		-0.9	possible downturn	
India	102.6	103.4	103.5	102.6		0.4	0.8	0.1	-0.9		-1.4	possible downturn	
Russia	99.7	100.9	102.7	102.3	101.9	0.7	1.2	1.8	-0.4	-0.3	2.5	slow expansion	

* China, India, Indonesia, Japan and Korea.

** Growth cycle phases of the CLI are defined as follows: expansion (increase above 100), downturn (decrease above 100), slowdown (decrease below 100), recovery (increase below 100). CLI data for 29 OECD member countries and 6 OECD Non-member economies available at: http://stats.oecd.org/wbos/default.aspx?datasetcode=MEI_CLI

Table 2: Historical Performance of CLI and Recent Cyclical Turning Points in the Reference Series

	CLI Historical Performance				Recent confirmed Turning Point dates in the reference series					
	Lead (+) / Lag (-) at all turning points				Dates (+) marked with (P) are provisional turning points					
	start year	median	mean	st. dev.	peak	trough	peak	trough	peak	trough
OECD Area	1965	5	5	3.8	Aug 2000	Dec 2001				
Euro Area	1965	6	7	8.4	Dec 2000			May 2003 P		
Major Five Asia*	1995	4	6	6.3	Aug 2000	Feb 2002				
Major Seven	1965	5	5	4.5	Dec 2000	Nov 2001				
Canada	1966	6	6	8.0	Aug 2000	Dec 2001	Dec 2005	Sep 2006 P		
France	1967	7	7	5.7	Nov 2000	May 2003				
Japan	1959	8	7	5.4	Dec 2000	Nov 2001	Jan 2004	Jul 2005 P		
Germany	1961	3	4	4.3	Feb 2001	Sep 2003 P				
Italy	1965	8	8	10.7	Dec 2000			Jan 2005 P		
United Kingdom	1972	7	7	5.0	Jan 2001	Jun 2002	Jan 2004 P	Oct 2005 P		
United States	1955	6	7	3.6	May 2000	Dec 2001				
Brazil	1979	4	5	4.5	Dec 2000	Jul 2003	Aug 2004	Sep 2006 P		
China	1983	4	6	6.5	Jul 2000	Feb 2002				
India	1995	1	1	0.8	May 2000	Feb 2002			Mar 2007 P	
Russia	1994	10	7	9.3	Aug 2001	Dec 2002				

* China, India, Indonesia, Japan and Korea

P= provisional (see Methodological Notes on next page)

Methodological Notes

The OECD CLI is designed to provide early signals of turning points (peaks and troughs) between upswings and downswings in the growth cycle of economic activity. The CLI is an instrument of analysis that has to be used carefully. Whilst it has a long-term average = 100, the CLI provides qualitative information on short-term economic movements rather than quantitative measures. Therefore, the main message of CLI movements over time is the direction up or down in the growth cycle where the cyclical phases are defined as follows: expansion – CLI increasing and above 100; downturn – CLI decreasing but above 100; slowdown – CLI decreasing and below 100; recovery – CLI increasing but below 100.

The CLIs are aggregated time series which summarise information contained in a number of key short-term economic indicators known to be linked to GDP. They have been compiled using a modified version of the method developed by the US National Bureau of Economic Research. The CLI system comprises a set of component series selected from a wide range of economic indicators all sharing the common property of indicating swings in future economic activity (224 series are used in total, about 5-10 for each country).

Cyclical turning points are directly captured in the (amplitude adjusted) de-trended or ratio to trend form of the CLI as compiled from its de-trended component series. The monthly change (point) of the CLI provides information on short-term movements while the change (point) from the same month previous year supplies short-term trend information (Table 1). In practice, turning points in industrial production or GDP have been found about six months (on average) after the signals of turning points had been detected in the CLI. The historical performance (lead/lag at turning points) of the CLIs for individual countries and areas are set out in Table 2.

In general, the monthly index of industrial production covering all industry sectors (IIP) is used for the reference series as a proxy measure for quarterly GDP, because historical turning points of IIP have coincided with those of GDP for most OECD countries. Recent confirmed turning points in the reference series are set out in Table 2, where the most recent ones are noted provisional until they have been verified against those of the quarterly GDP. This is done in order to ensure consistency between the final reference chronology and GDP.

Access to time series data and methodological information for *OECD Composite Leading Indicators (CLI)*, *standardised consumer and business confidence indicators*, *business tendency survey indicators* by sector and *consumer opinion survey indicators* is provided by the OECD Business Cycle Analysis Database available at the OECD web site at <http://stats.oecd.org/mei/default.asp?rev=2>

The **OECD-Total** covers the following 29 countries: Australia, Austria, Belgium, Canada, Czech Republic, Denmark, Finland, France, Germany, Greece, Hungary, Ireland, Italy, Japan, Korea, Luxembourg, Mexico, Netherlands, New Zealand, Norway, Poland, Portugal, Slovak Republic, Spain, Sweden, Switzerland, Turkey, United Kingdom, and United States.

The **G7 area** covers Canada, France, Germany, Italy, Japan, United Kingdom and United States.

The **Euro area** (not including Slovenia, Cyprus and Malta) covers the following 12 countries: Austria, Belgium, Finland, France, Germany, Greece, Italy, Ireland, Luxembourg, the Netherlands, Portugal, and Spain.

The **Major Five Asia area** covers China, India, Indonesia, Japan and Korea.

This Press Release can be found on the OECD web page, see [OECD Internet Site](#)

Contacts:

For further information journalists are invited to contact the OECD's Media Relations Division on (33) 1 45 24 97 00 or e-mail news.contact@oecd.org.

For technical questions contact stat.contact@oecd.org

Next release: 11 April 2008