



## "SICKNESS, DISABILITY AND WORK: BREAKING THE BARRIERS

Denmark, Finland, Ireland and the Netherlands (Vol.3).  
Discussion of the draft report and general policy issues.

Thematic session C: Labour demand – do we need a  
secondary labour market?

### **Luxembourg: recent benefit reform - difficulties in promoting external redeployment**

26-27 June 2008, Dublin

1

## Exits (in %) by type of pension, 1965-2005



26-27 June 2008, Dublin



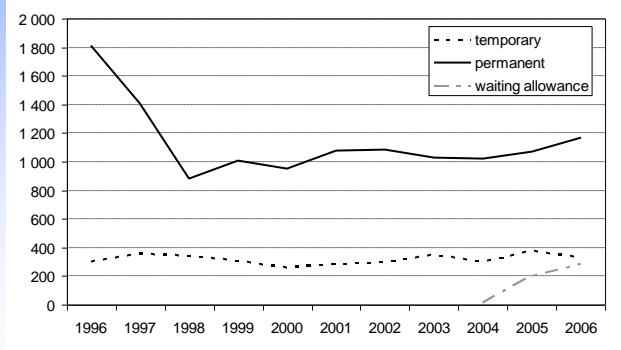
Source : IGSS

2

## Exit to disability scheme, 1996-2006



MINISTÈRE  
DE LA SÉCURITÉ SOCIALE  
Inspection générale de la sécurité sociale  
26-27 June 2008, Dublin



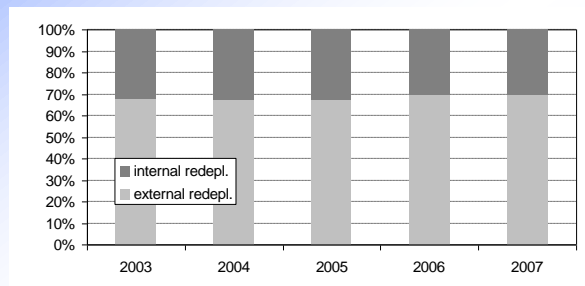
Source : IGSS

3

## Internal and external redeployment, 2003-2007



MINISTÈRE  
DE LA SÉCURITÉ SOCIALE  
Inspection générale de la sécurité sociale  
26-27 June 2008, Dublin



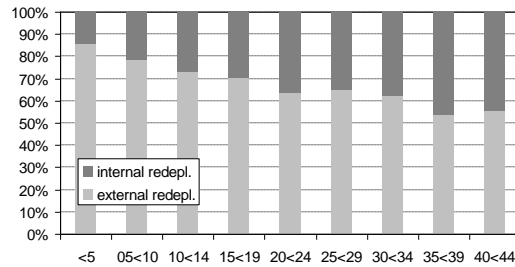
Source : IGSS

4

## Internal and external redeployment, 2003-2007, by length of affiliation



MINISTÈRE  
DE LA SÉCURITÉ SOCIALE  
Inspection générale de la sécurité sociale  
26-27 June 2008, Dublin



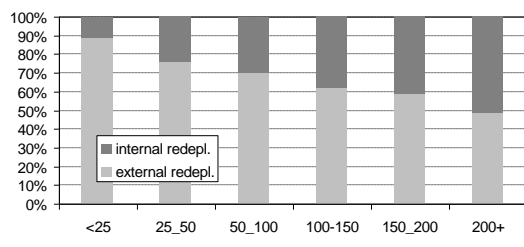
Source : IGSS

5

## Internal and external redeployment, 2003-2007, by size of employer



MINISTÈRE  
DE LA SÉCURITÉ SOCIALE  
Inspection générale de la sécurité sociale  
26-27 June 2008, Dublin



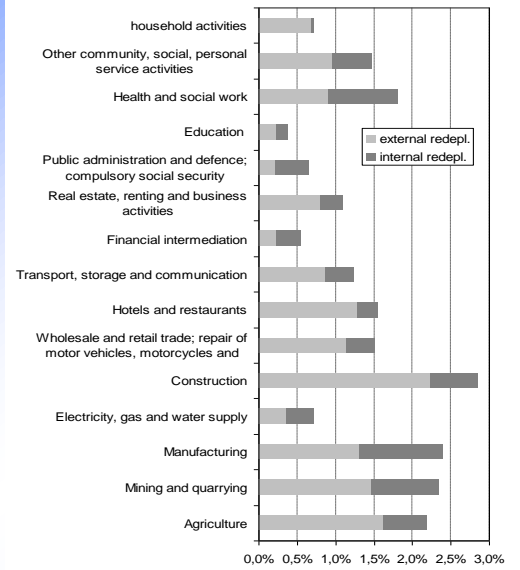
Source : IGSS

6

## Internal and external redeployment by sector of activity, 2003-2007



MINISTÈRE  
DE LA SÉCURITÉ SOCIALE  
Inspection générale de la sécurité sociale  
16-27 June 2008, Dublin



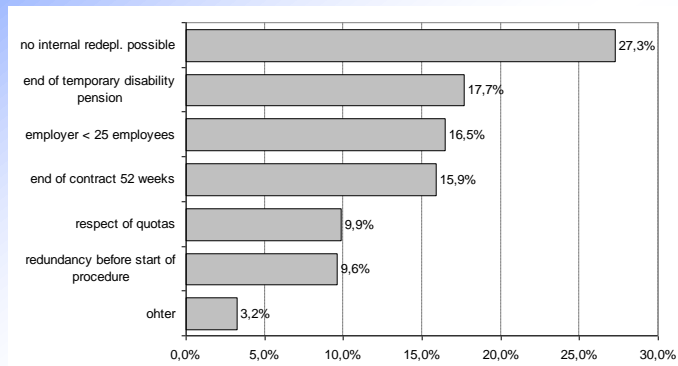
Source : IGSS

7

## Reasons for external redeployment, 2007



MINISTÈRE  
DE LA SÉCURITÉ SOCIALE  
Inspection générale de la sécurité sociale  
26-27 June 2008, Dublin



Source :ADEM

8



**Thank You for your attention**