



STATISTICS DIRECTORATE

For Official Use  
STD/NAES/TASS/ITS(2006)6

**National Accounts and Economic Statistics - International Trade Statistics**

**Item 3 b): Processing Systems issues**

**7th OECD INTERNATIONAL TRADE STATISTICS EXPERT MEETING ITS  
and OECD-EUROSTAT MEETING OF EXPERTS IN TRADE-IN-SERVICES STATISTICS (TIS)**

**Tour Europe - Paris La Défense, Salle des Nations, 11-14 September 2006**

*This document has been prepared by Trevor Fletcher and Sandrine Phelipot, OECD, for information and discussion, under item 3 b) of the draft agenda.*

For further information, please contact:  
trevor.fletcher@oecd.org  
sandrine.phelipot@oecd.org

JT03213248

## **THE NEW AND OPERATIONAL UNSD\_OECD JOINT TRADE DATA COLLECTION AND PROCESSING SYSTEM: PRESENTATION OF PROCESSING SYSTEM ISSUES.**

### **Introduction**

The OECD/UNSD Joint Trade Data Collection and Processing System is a key component of the overall application developed to manage annual commodity statistics throughout their life cycle from data capture through validation to dissemination using a common set of processing rules, concepts and software tools. This paper covers the COPRA application that handles the processes up to on-line dissemination. The overall aims and advantages of the entire Joint Trade System project are covered in other papers presented during the 7<sup>th</sup> Trade Experts meeting.

### ***1. Main Features of the Common Processing Application (COPRA)***

The COPRA application software manages all steps of International Commodity Statistics processing from Data Capture up to Online Dissemination and incorporates the common processing rules agreed between the OECD and UNSD Trade Statistics management. The application is currently being used as a production tool by both organisations.

The COPRA Application covers the following main processing phases each of which is described in more detail in the remainder of the paper:

- Data Capture
- Normalisation of Codes
- Data Completeness Checks
- Normalisation of Commodities
- Data Aggregation
- Quantity and Value Checking
- Data Classification Conversions
- Data Publishing

a) *Data Capture*

The process to import country data is managed via the 'Data Import Wizard'. This allows the Database Administrator to select the country data from the appropriate source (MS Access or Comtrade SDMX format) and transfer the file into the temporary database for checking.

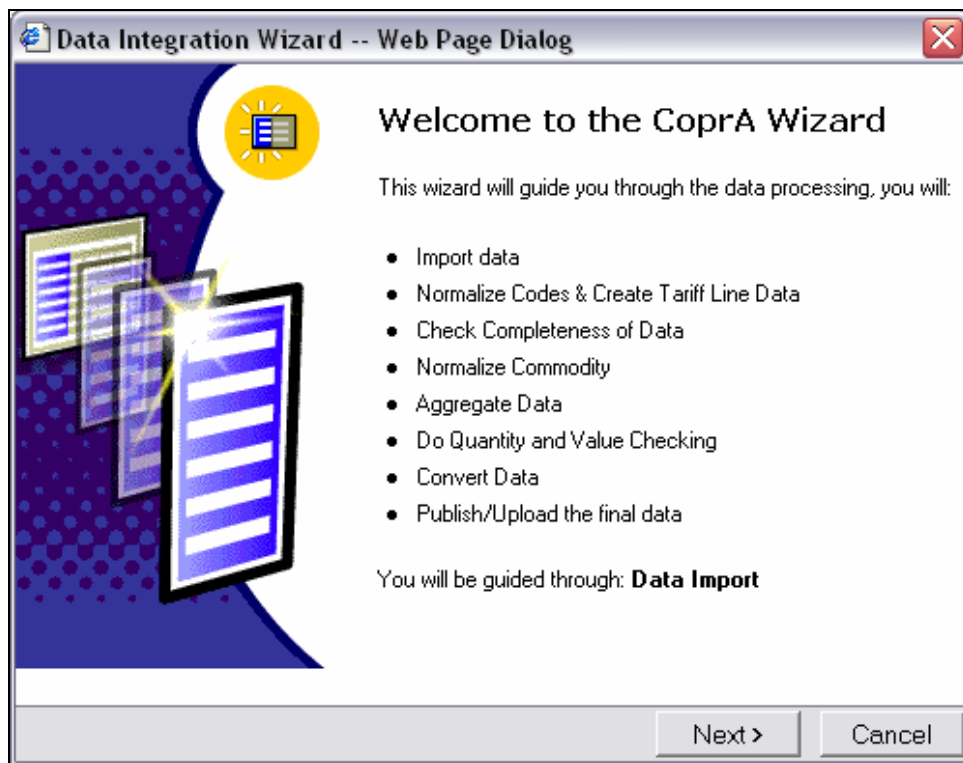


Figure 1: COPRA Wizard – Data Import step.

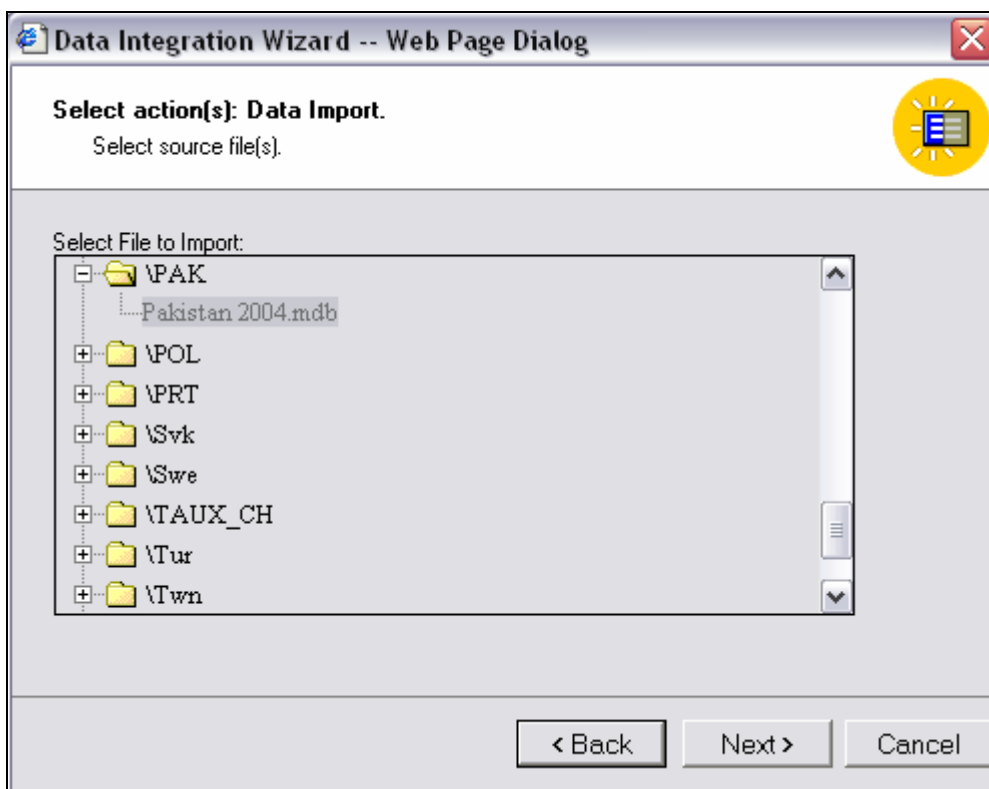


Figure 2: data source – country selection

Unsd Internet | Oecd Internet

Copra Home | Processing | Reports | Tools | Configuration | Forum | Help

### Manage Processing Job

Start by uploading necessary files. Then, follow the next step. Only TOP 25 jobs shown.

Group By: --None-- Filter By: (ALL) Pakistan 2004 HS2002 (ALL) Apply

National Data	Step	Next Step	Editor	Last Update	By	Action
(2004 - H2) Pakistan	Data Import (Re-run, Log, Report, Data)	<ul style="list-style-type: none"> <li>Verify References</li> <li>View <a href="#">Partner</a>, <a href="#">Qty Unit</a>, <a href="#">Flow</a></li> <li><a href="#">Code Normalization</a></li> </ul>	SP	17:00:12	PS	

Figure 3: COPRA Processing log giving details of Import process

*b) Normalisation of Codes*

This step allows the Database Administrator to map any data provider codes that are not recognised by the system to be mapped to the standard database codes covering: Partners, Quantity units, Currency and Flow.

In addition, any data values provided in National Currency are converted to US\$.

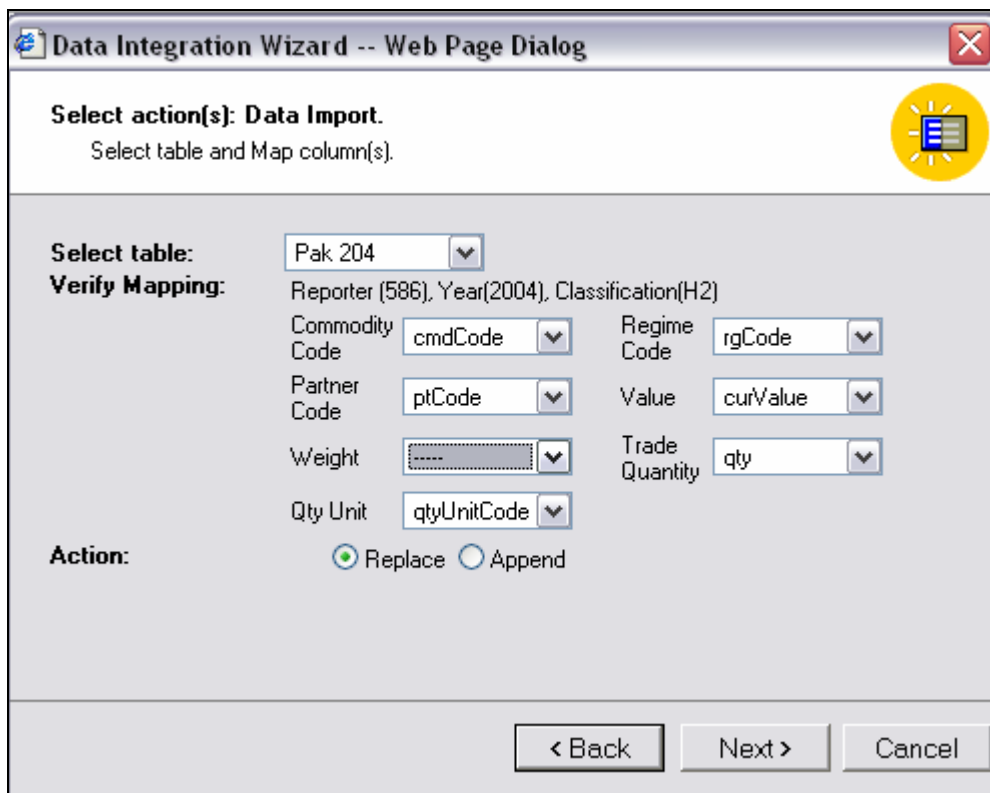


Figure 4: Code Normalisation - Table column mapping

Unsd Internet | Oecd Internet

Statistics Division

CoprA Home | Processing | Reports | Tools | Configuration | Forum | Help

### Manage Processing Job

Start by uploading necessary files. Then, follow the next step. Only TOP 25 jobs shown.

Group By: --None-- Filter By: (ALL) Pakistan 2004 HS2002 (ALL)

National Data	Step	Next Step	Editor	Last Update	By	Action
(2004 - H2) Pakistan	Data Import <div style="width: 100px; height: 10px; background-color: blue; margin-bottom: 5px;"></div> Finalizing	Not Available	SP	16:59:30	PS	

Figure 5: Code normalisation log details

*c) Data Completeness checks*

This step is an intermediate control before the commodity normalisation. Various checking reports are output before continuing the process. These include:

- the percentage and use of HS and SITC codes
- the number of non-standard codes
- calculating and comparing the Total Trade value

**Processing Reports**

View reports by processing step.

**Selection Criteria**

National Data of: Denmark(2005-H2) [v]  
 Step: Completeness Check [v]  
 Report Type:  Content  Runtime  
 [Generate Report] [Print] [PDF] [Excel]

**Report Tables**

Denmark-2005 (Classification: H2 -- State: CompletenessCheck) [Printable Format](#)

CONTENT REPORTS

CompletenessCheck

Table.1 Commodity Distribution

Chapter	Percentage Used	# of Non Standard Codes
0	77.68 %	0
1	70.16 %	0
2	75.02 %	0
3	76.02 %	0
4	75.69 %	0
5	79.13 %	0
6	81.00 %	0
7	75.36 %	0
8	80.83 %	0
9	76.86 %	6

Table.2 Totals Comparison  
 View Comtrade Totals

Flow	# of records	National Trade	Diff With TTrade	%TTrade	Diff With Comtrade	%Comtrade
Import	106,069	\$74,986,852,637.69	\$239,432,502.22	0.32 %	\$18,118,793.69	0.02 %
Export	146,488	\$83,311,341,627.28	\$605,609,129.37	0.72 %	\$37,652,870.28	0.05 %
Re-Export	0	\$0.00				

Figure 6: Completeness check reports

*d) Normalisation of Commodities*

This step of the process converts the non-standard commodity codes to the standard ones as defined in the appropriate classification. It also assigns Memorandum Items and removes them when required

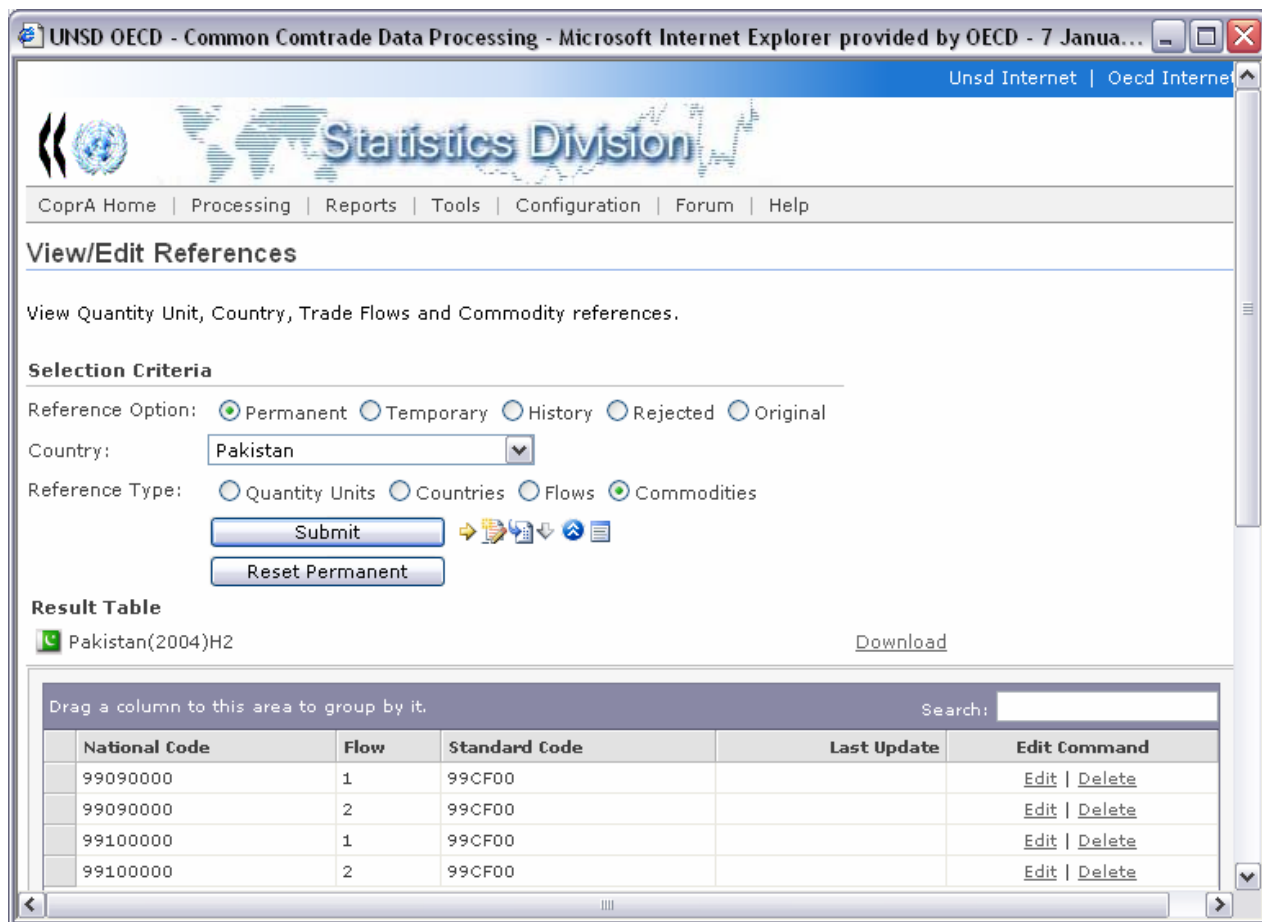
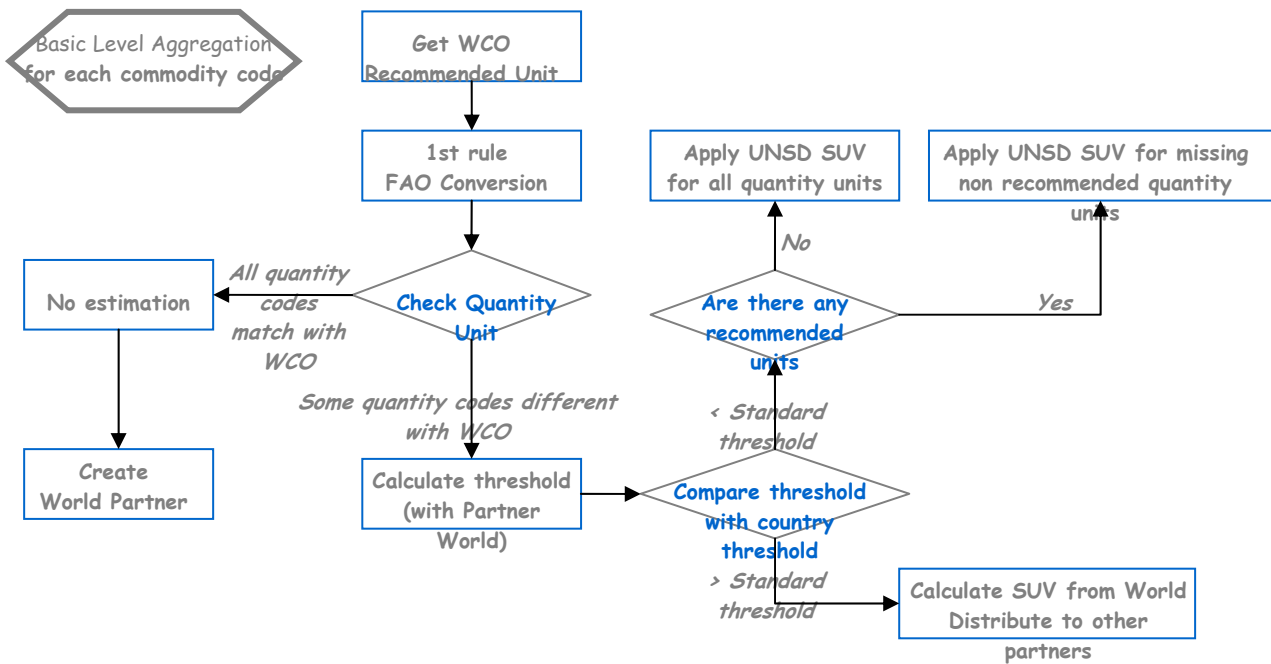


Figure 7: Interface for checking or editing Commodity Codes...

e) Data Aggregations

The first aggregation is to the basic level of the value and estimates quantities according the following schema:



The second step of the aggregation consists of the Quantity and value Checking. At this point, the process compares values and unit values with historical data and standard unit values

The third and final step is the higher level aggregation which aggregates up to TOTAL and handles memorandum item and reported data.

f) Data Conversion

This step converts data from one commodity classification type into all others used within the system.

**Processing Reports**

View reports by processing step.

**Selection Criteria**

National Data of: France(2004-H2)

Step: Data Conversion

Report Type:  Content  Runtime

**Report Tables**

France-2004 (Classification: H2 -- State: DataConversion) [Printable Format](#)

---

CONTENT REPORTS

DataConversion

Table.1 Converted Classifications

Classification	# of import	# of export	# of re-export	# of re-import	date
H0	199,159	337,841	0	14,703	2006-05-10T10:28:31
H1	201,955	343,026	0	14,979	2006-05-10T10:28:31
S1	86,334	138,914	0	4,422	2006-05-10T10:28:32
S2	118,674	193,469	0	6,516	2006-05-10T10:28:32
S3	165,809	283,175	0	10,440	2006-05-10T10:28:35

Table.2 To be published Explanatory Notes

Classification	Currency	MXR	MConv.Factor	MType	MVal	MPartner	MConv.Factor	XType	XVal	XPartner
H0		MX	1.24	General	CIF		1.24	General	FOB	
H1		MX	1.24	General	CIF		1.24	General	FOB	
S1		MX	1.24	General	CIF		1.24	General	FOB	
S2		MX	1.24	General	CIF		1.24	General	FOB	
S3		MX	1.24	General	CIF		1.24	General	FOB	
H2		MX	1.24	General	CIF		1.24	General	FOB	

*g) Data Publication*

This step publishes data into the dissemination database for online access.

