

OECD business symposium on Open innovation - Closing remarks

Director General Finn Lauritzen,
Danish Enterprise and Construction Authority

26 February 2008

Open innovation practices: from anecdotic evidence to fact-based policies

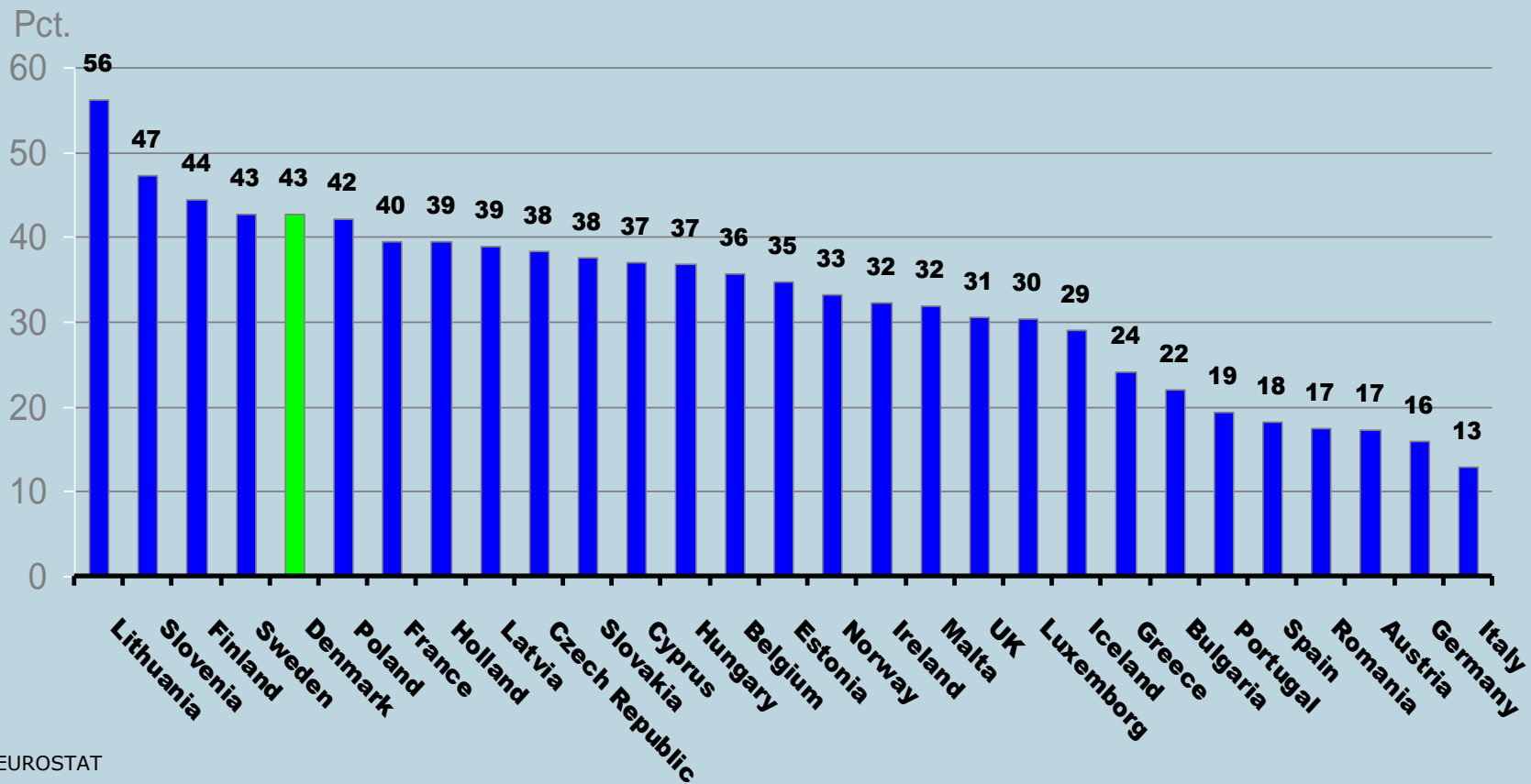
- Creating a common knowledge base for open innovation
- First step towards fact-based innovation policies that include new forms of innovation



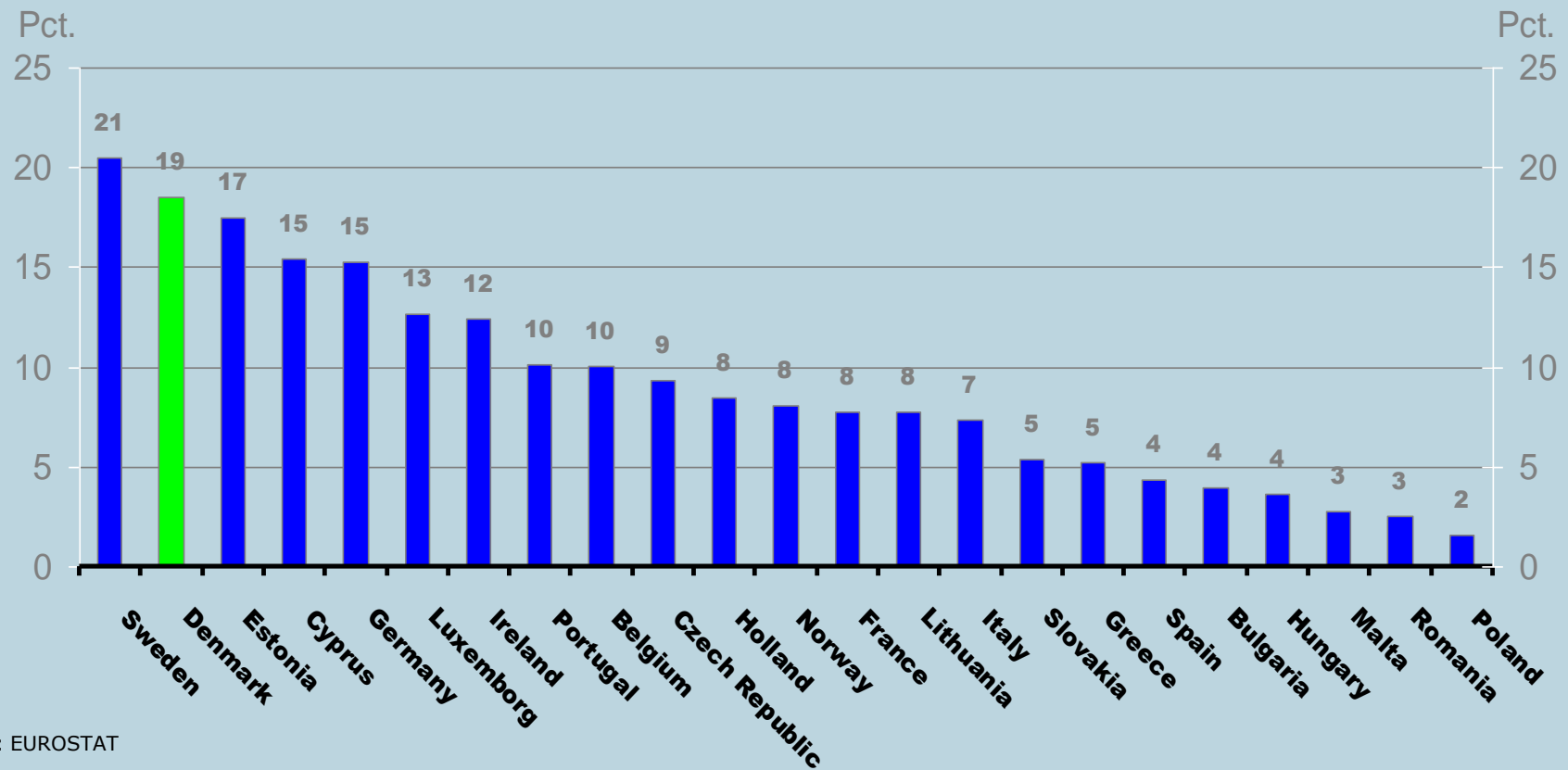


ERHVERVS- OG BYGGESTYRELSEN

CIS surveys: Cooperation on innovation

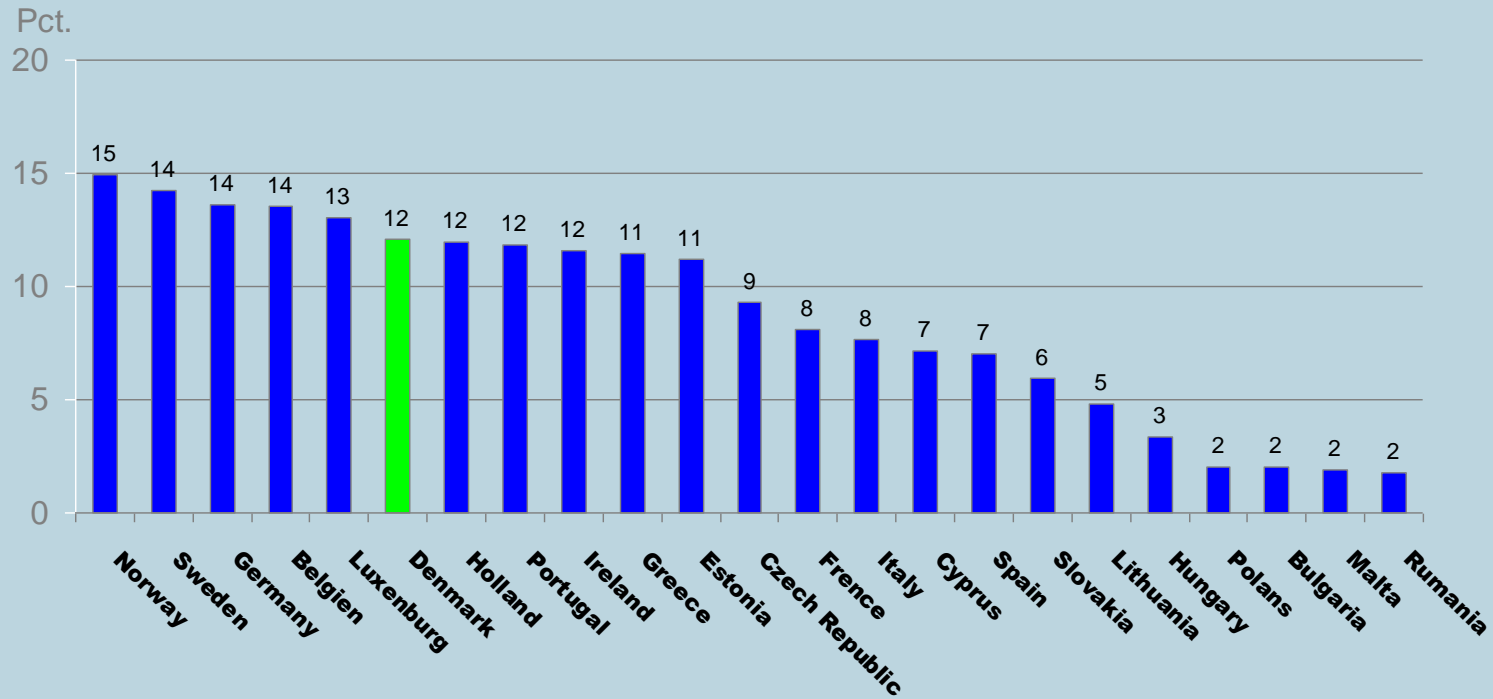


Use of external knowledge in innovation processes

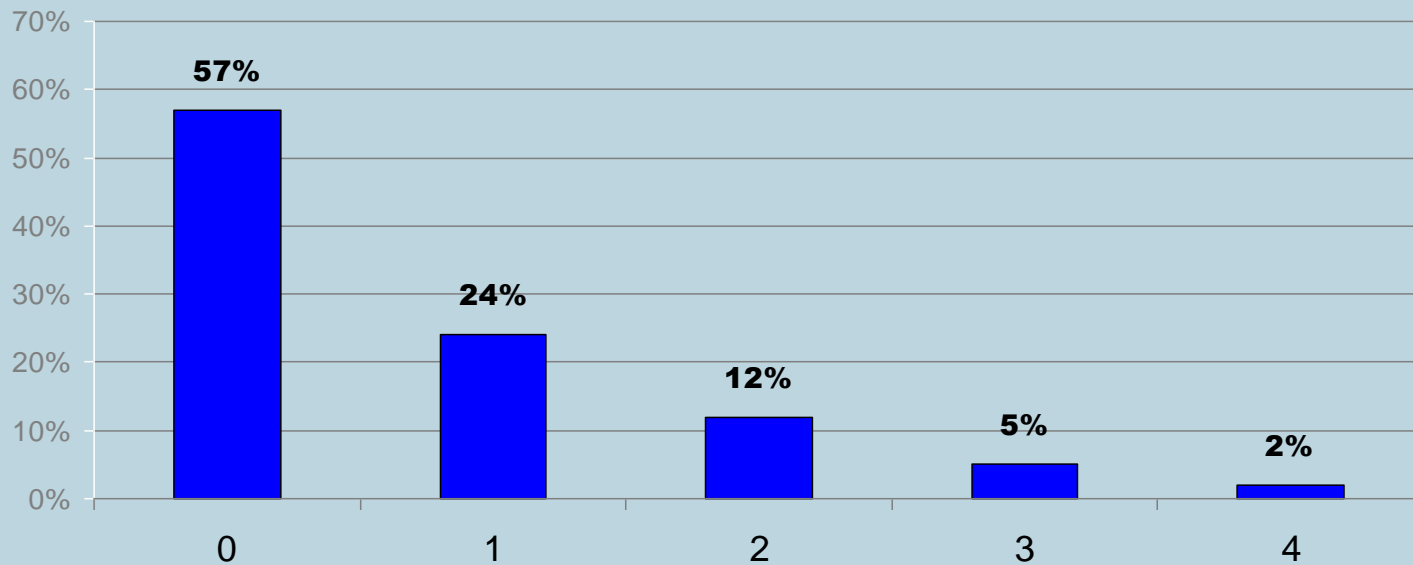




Purchased R&D used in innovation processes

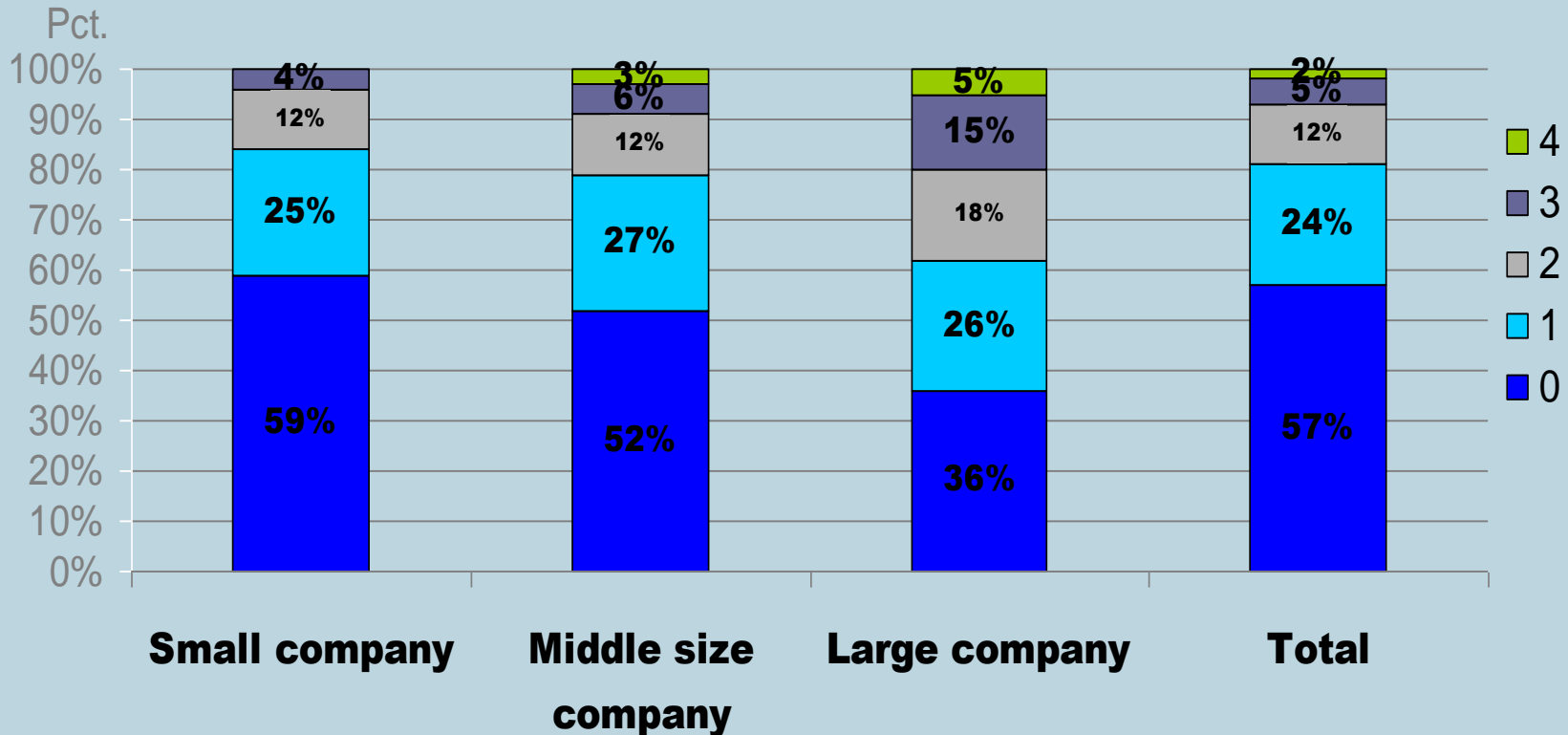


Open innovation in Danish companies



Use of open innovation practices: 0 = no use, 4 = extensive use

Open Innovation in Danish companies



Use of open innovation practises 0= no use , 4 = extensive use

Open innovation & innovation activity in Danish companies

	Use of open innovation					
	0	1	2	3	4	
Types of innovations introduced by the company	0	28 %	0	0	0	0
	1	20 %	10 %	1 %	0	0
	2	5 %	7 %	4 %	1 %	0
	3	3 %	5 %	5 %	2 %	1 %
	4	1 %	2 %	2 %	2 %	1 %
	<i>Total</i>	57 %	24 %	12 %	5 %	2 %



Increasing the use of open innovation in Danish companies = increasing innovation activity?

	Use of open innovation					
	0	1	2	3	4	
Types of innovations introduced by the company	0	28 %	0	0	0	0
	1	20 %	10 %	1 %	0	0
	2	5 %	7 %	4 %	1 %	0
	3	3 %	5 %	5 %	2 %	1 %
	4	1 %	2 %	2 %	2 %	1 %
	Total	57 %	24 %	12 %	5 %	2 %

The way ahead – OECD Innovation Strategy

- Building a strong knowledge base for a smart innovation policy with:
 - Focus on new types of innovation
 - Analyzing policy implications
 - Identifying best policy practices
 - Enabling monitoring and benchmarking

